

V&V Reference Report

L2 ASCDS Version : 7.6.9

Observation 3255 - L2 Version 001
Chandra X-Ray Center

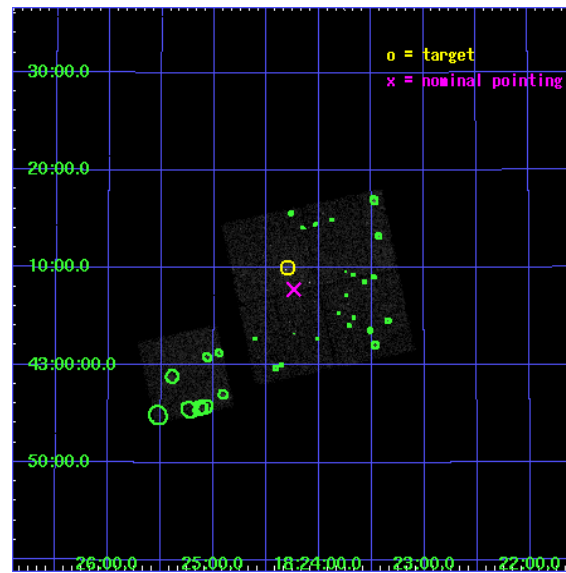
L2 Processing Date : Oct 4 2006

Contents

1	Front	2
2	OBI	3
2.1	OBI	3
2.1.1	Images	3
2.1.2	Bias	3
2.1.3	Parameters	4
2.1.4	Events	4
2.2	Compared Parameters	5
2.3	Aspect	6
2.4	Star Slots	9
2.4.1	Slot 3	9
2.4.2	Slot 4	10
2.4.3	Slot 5	11
2.4.4	Slot 6	12
2.4.5	Slot 7	13
2.5	FID Slots	14
2.5.1	Slot 0	14
2.5.2	Slot 1	15
2.5.3	Slot 2	16
3	Point Sources	17
A	Summary	18
A.1	Status	18
A.2	Comments	18

1 Front

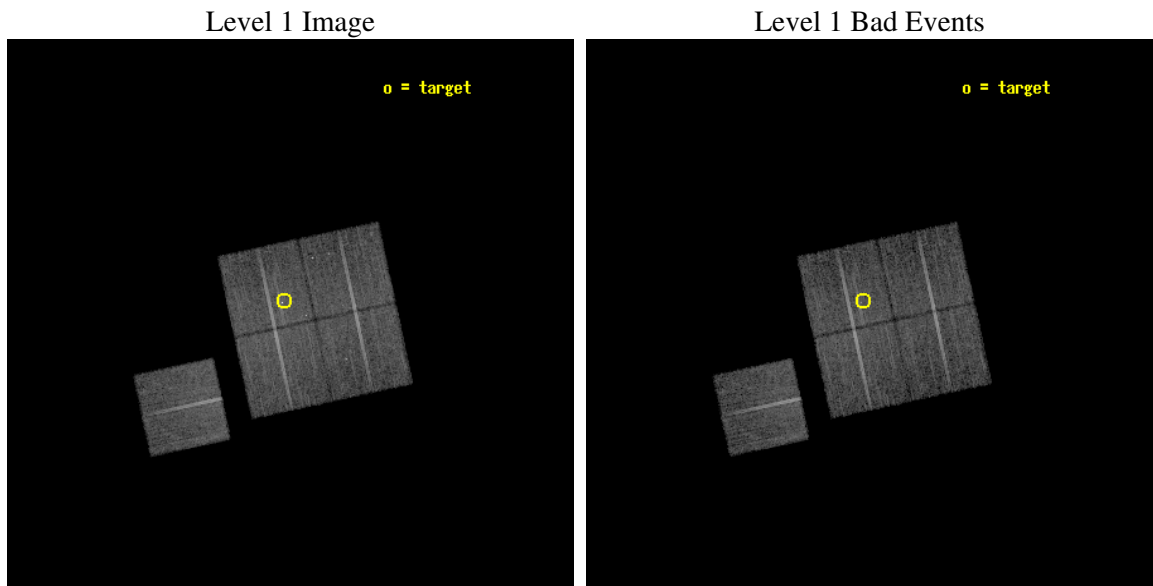
seq_num	800255
obs_id	3255
title	OBSERVATION OF MACS CLUSTERS, 0.45
observer	DR. LEON VANSPEYBROECK
object	MACS-J1824.3+4309
dtcycle	0
cycle	P
ra_targ	276.073333
dec_targ	43.166389
ra_nom	276.05989457196
dec_nom	43.130008201506
roll_nom	257.86482735687
revision	2
ontime	15118.699970931
livetime	14921.163025586
ontime0	15115.558980823
ontime1	15118.699970931
ontime2	15118.699970931
ontime3	15118.699970931
ontime6	15112.418040454
l2events	37450



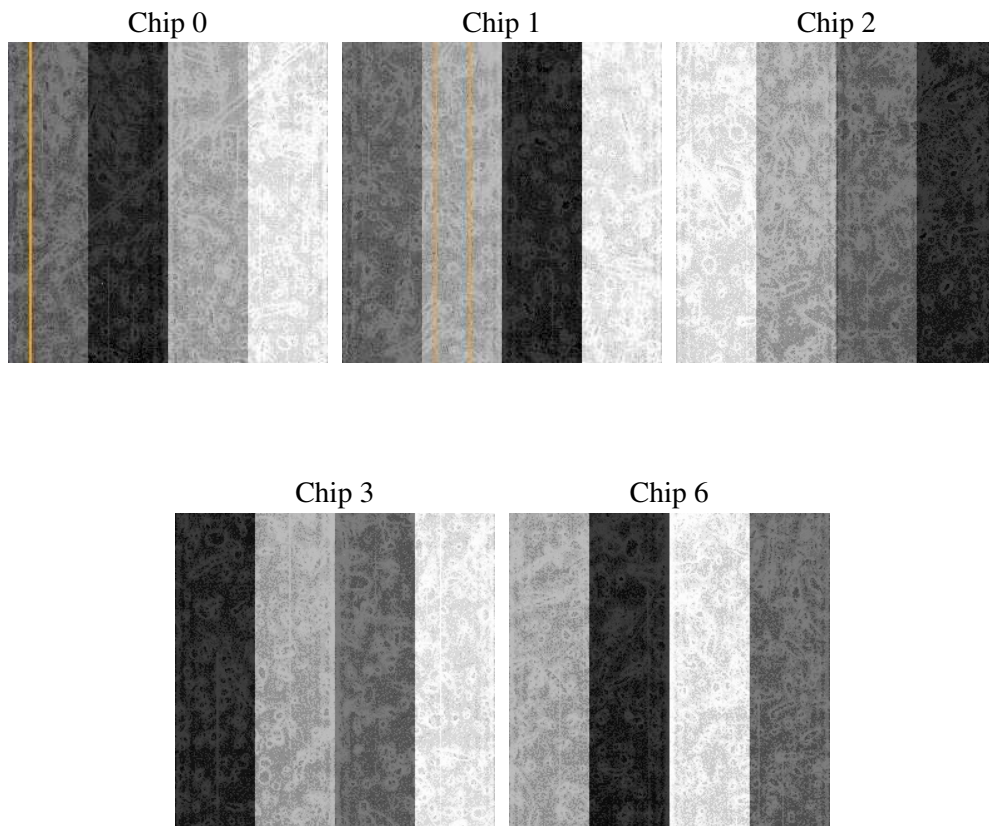
2 OBI

2.1 OBI

2.1.1 Images



2.1.2 Bias



2.1.3 Parameters

obi_num	1
ascdsver	7.6.9
caldbver	3.2.3
date	2006-10-04T09:22:49
revision	2

sched_exp_time	15000.000000
ontime	15123.923285156
ontime0	15120.78227514
ontime1	15123.923285156
ontime2	15123.923265249
ontime3	15123.923285156
ontime6	15117.641334772
l1events	398722

2.1.4 Events

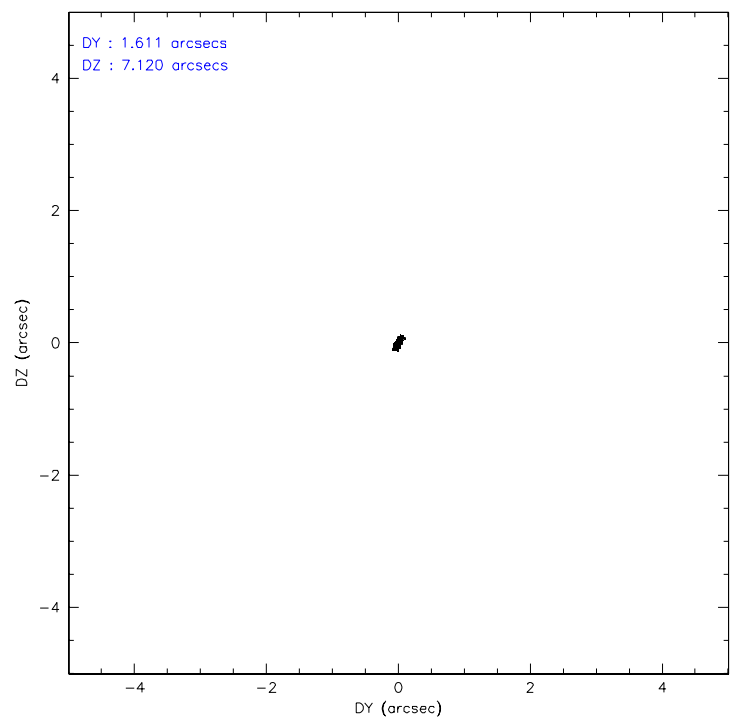
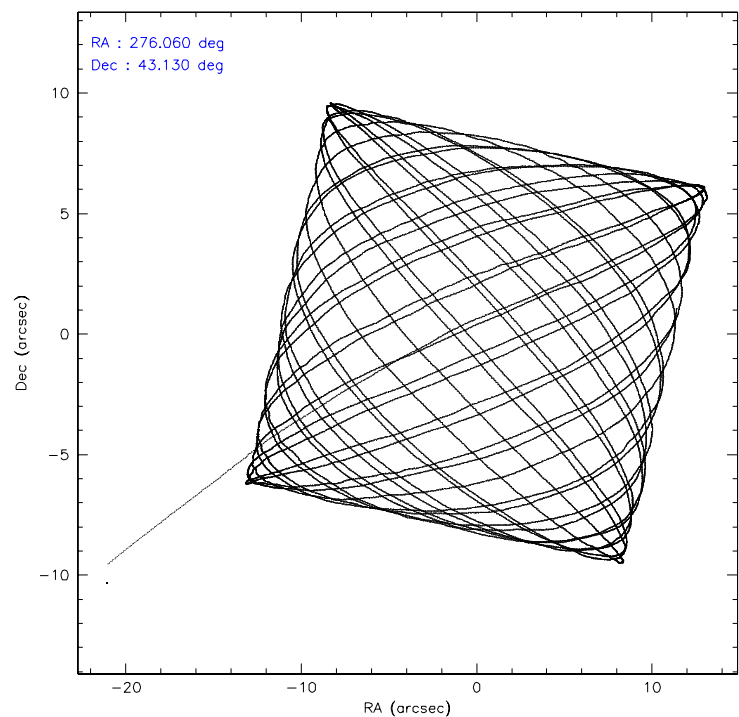
	ccd 0	ccd 1	ccd 2	ccd 3	ccd 6
level 1 events	75196	75351	84402	83014	80759
rejected events	66837	65655	76606	72766	72459
rejected %	88%	87%	90%	87%	89%

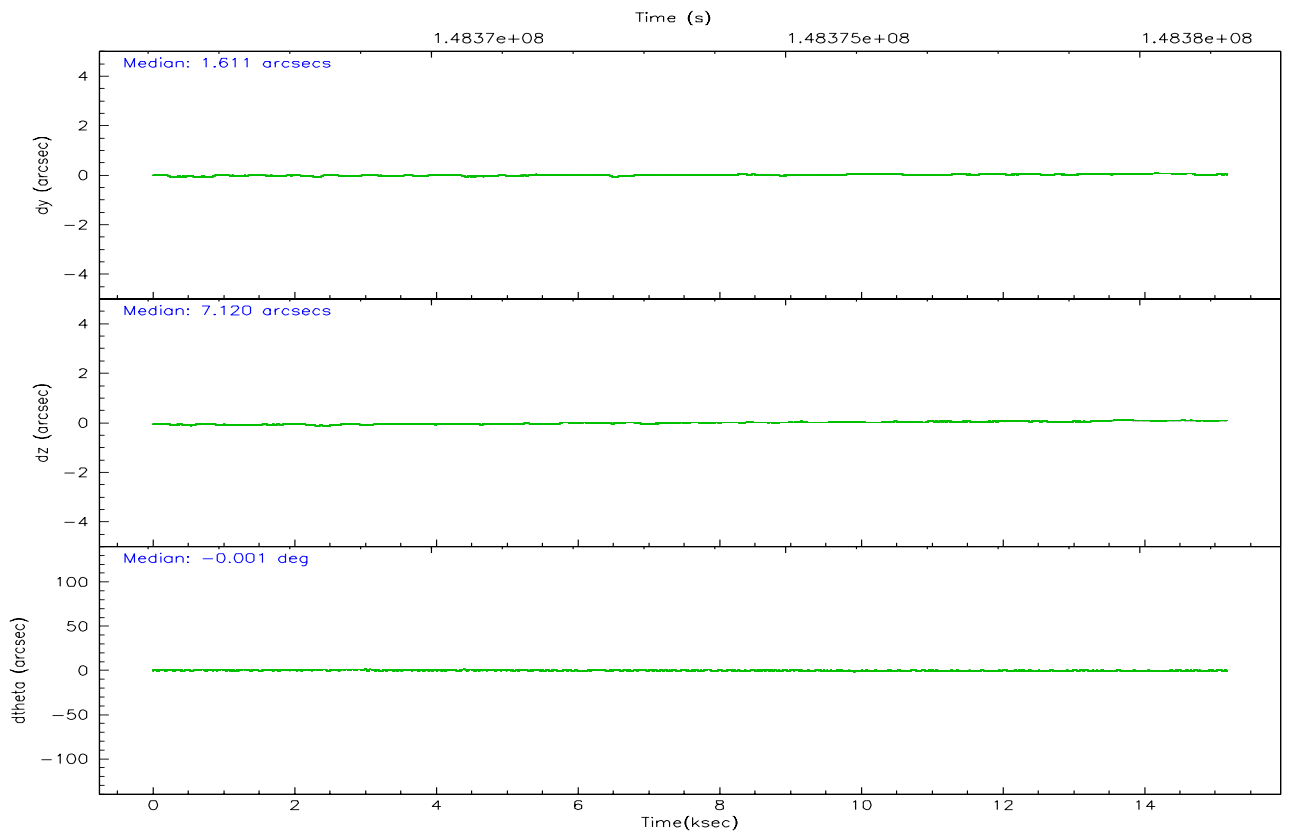
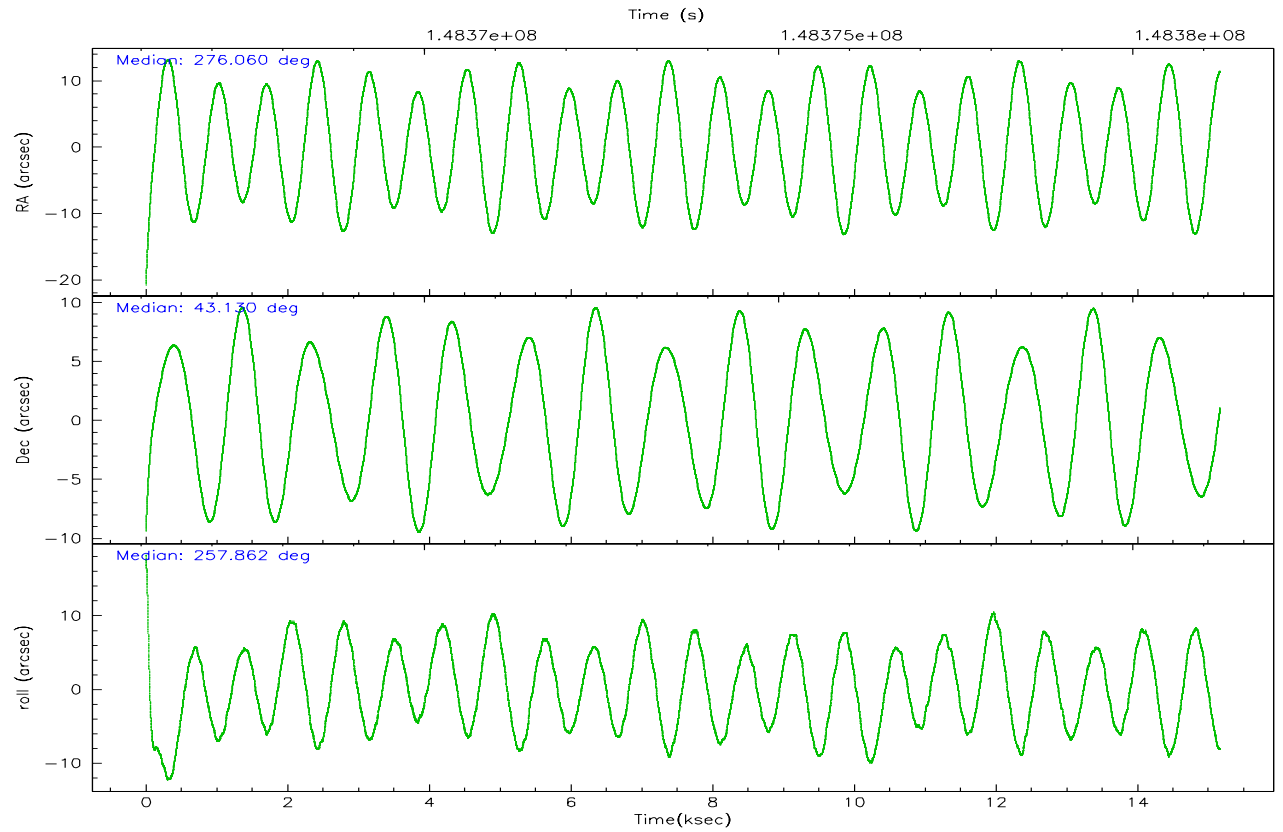
	ccd 0	ccd 1	ccd 2	ccd 3	ccd 6
grade 0 events	3195	4021	2993	5110	3031
	4%	5%	3%	6%	3%
grade 1 events	36	46	38	105	34
	0%	0%	0%	0%	0%
grade 2 events	1803	1892	1697	1758	1707
	2%	2%	2%	2%	2%
grade 3 events	981	1041	885	959	932
	1%	1%	1%	1%	1%
grade 4 events	876	998	884	967	925
	1%	1%	1%	1%	1%
grade 5 events	2681	2845	2597	3012	3101
	3%	3%	3%	3%	3%
grade 6 events	1508	1750	1340	1461	1707
	2%	2%	1%	1%	2%
grade 7 events	64116	62758	73968	69642	69322
	85%	83%	87%	83%	85%

2.2 Compared Parameters

Parameter	Planned	Actual	Parameter	Planned	Actual
Instrument	ACIS	ACIS	Obspar format version number	6	6
Detector	ACIS-01236	ACIS-01236	Obspar file type	PREDICTED	ACTUAL
Grating	NONE	NONE	Obspar update status	NONE	UPDATED
Data mode	VFAINT	VFAINT	Number of optional ACIS chips dropped	0	0
Observation mode	POINTING	POINTING	On-chip summing requested	N	N
Pointing RA	276.048247	276.0598945719555	Subarray requested	NONE	NONE
Pointing Dec	43.156060	43.13000820150587	Alternating exposures requested	N	N
Pointing Roll	257.664095	257.8648273568729	Primary exposure time	0.000000	3.1
SIM focus pos (mm)	-0.782348	-0.7809083437167272			
SIM defocus (mm)	0	0.001439871863259334			
SIM translation stage pos (mm)	-227.742463	-227.734108438797			
SIM translation stage offset (mm)	-5.85	-5.858344564132665			
Observation start time	148366231.184000	148365262.72641			
Observation start date	2002-09-14T04:49:27	2002-09-14T04:34:22			
Observation end time	148381231.184000	148381922.0521			
Observation end date	2002-09-14T08:59:27	2002-09-14T09:12:02			
Read mode	TIMED	TIMED			

2.3 Aspect



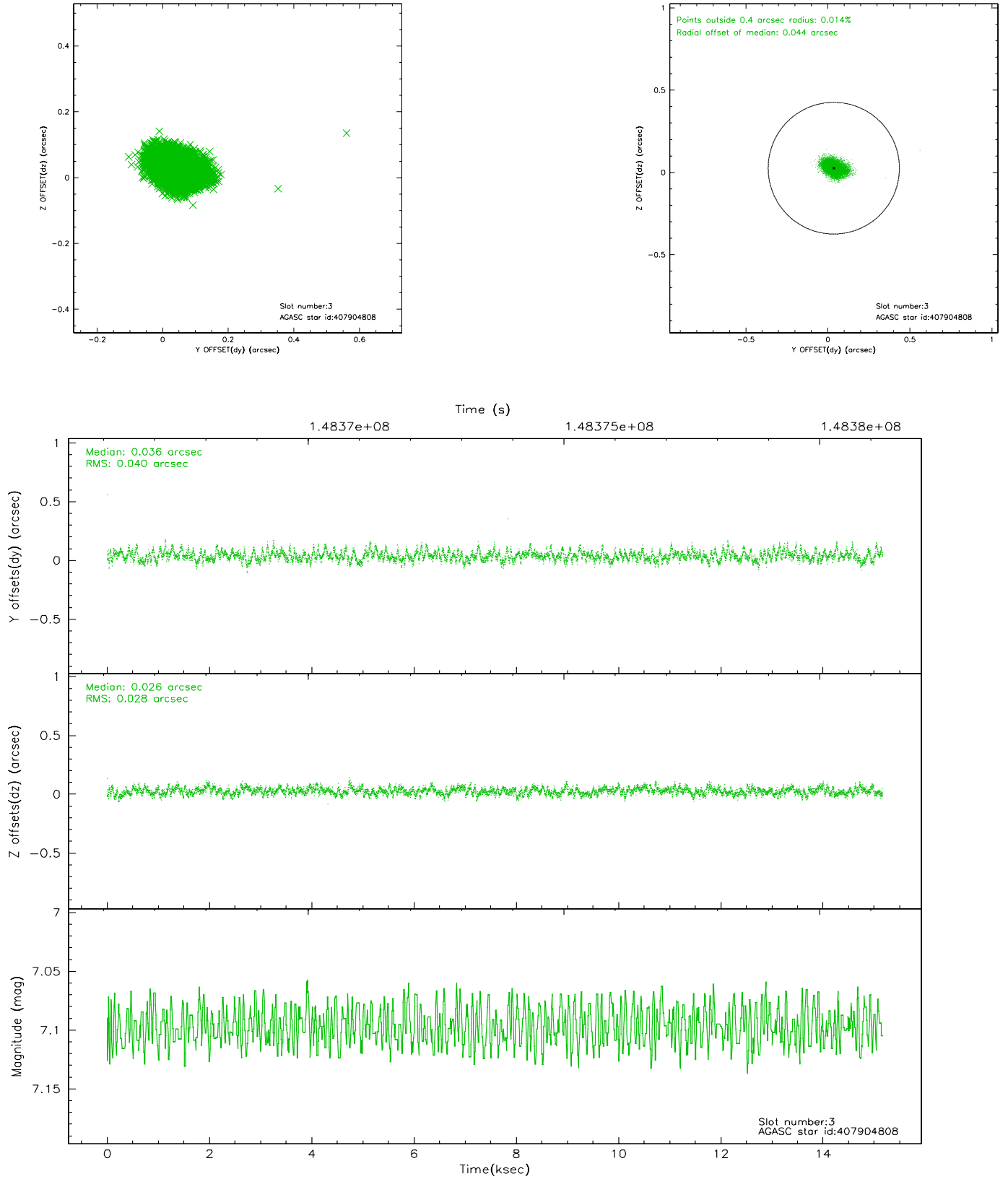


Slot Statistics

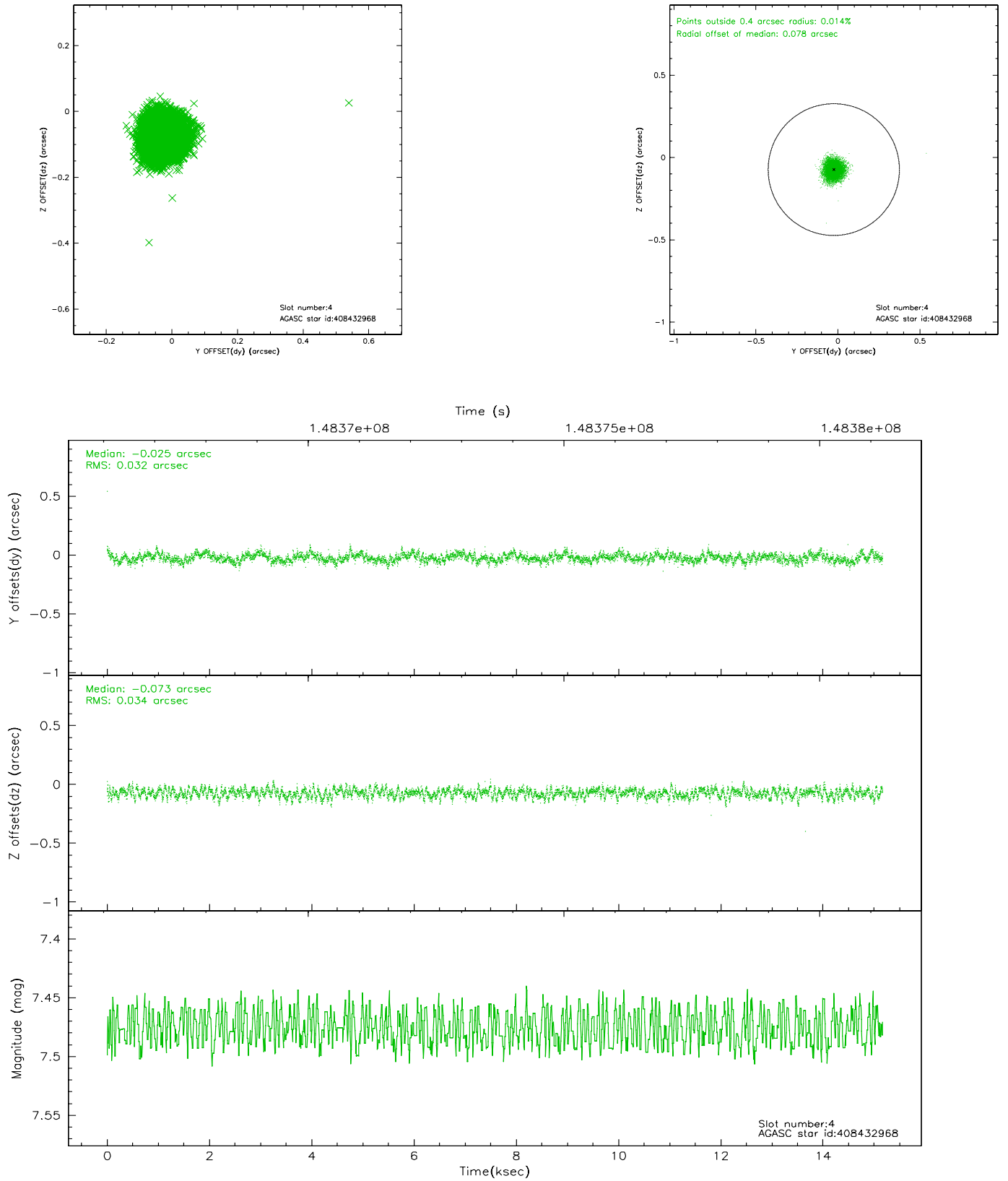
slot	status	id	mag	n_pts	med_dy	med_dz	dr1	dr2	ra	dec	mean_y	mean_z
0	FID	ACIS-I-1	7.25	3700	0.029	0.033	0.006	0.011	0.000000	0.000000	938.12	-950.74
1	FID	ACIS-I-5	7.24	3700	-0.112	0.071	0.006	0.010	0.000000	0.000000	-1809.93	946.66
2	FID	ACIS-I-6	7.25	3700	-0.009	-0.033	0.007	0.012	0.000000	0.000000	403.35	1591.36
3	GUIDE	407904808	7.10	7401	0.036	0.026	0.051	0.086	276.045617	42.466908	2426.03	524.00
4	GUIDE	408432968	7.48	7401	-0.025	-0.073	0.049	0.080	275.637620	43.449053	-802.55	-1273.74
5	GUIDE	407902872	8.82	7396	0.018	0.025	0.070	0.112	276.534956	42.710874	1287.69	1599.90
6	GUIDE	408425144	8.57	7400	-0.005	-0.000	0.063	0.102	275.775172	43.656441	-1607.92	-1079.19
7	GUIDE	408433224	8.99	7399	-0.023	0.027	0.082	0.129	275.430475	43.588301	-1181.19	-1906.99

2.4 Star Slots

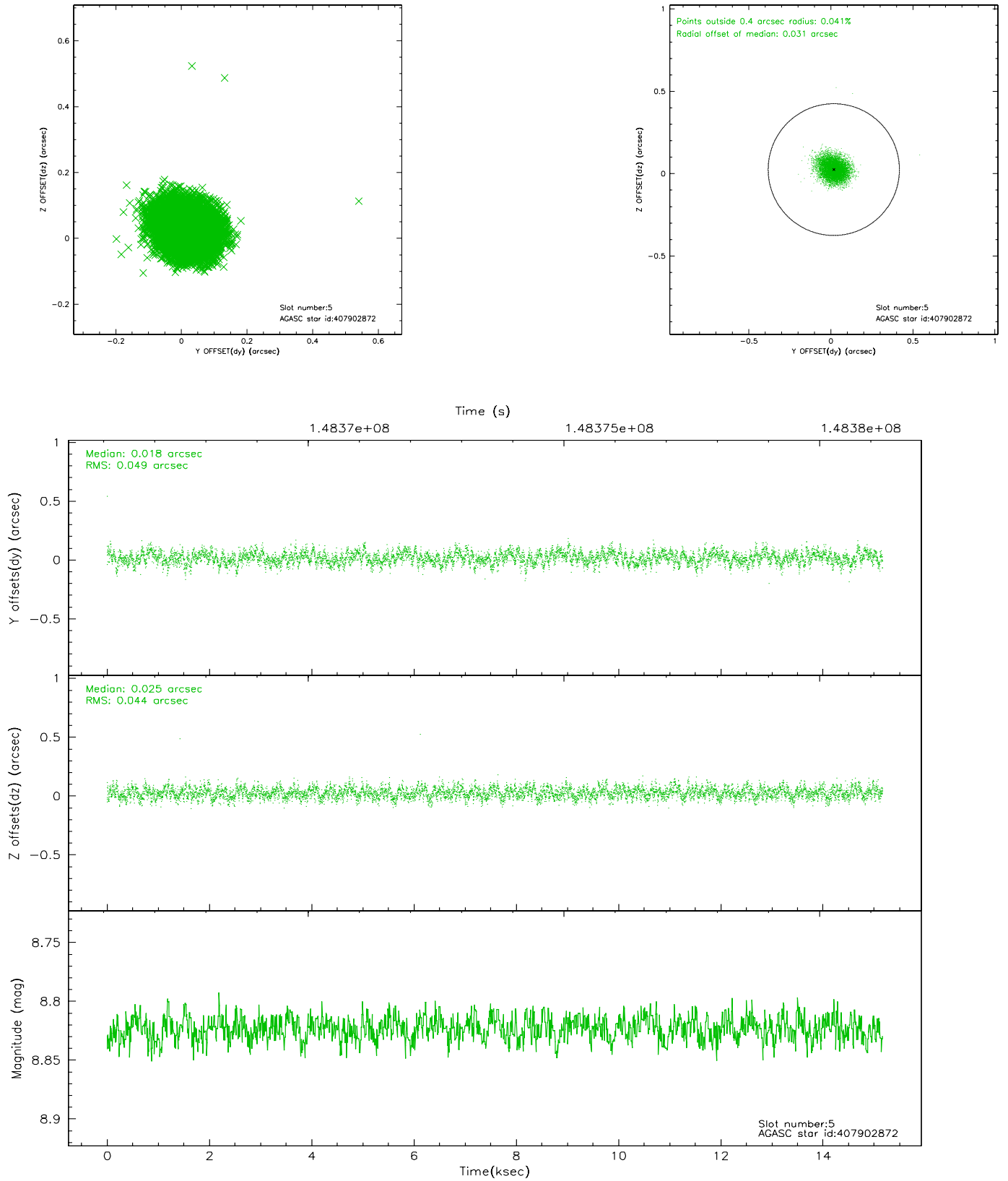
2.4.1 Slot 3



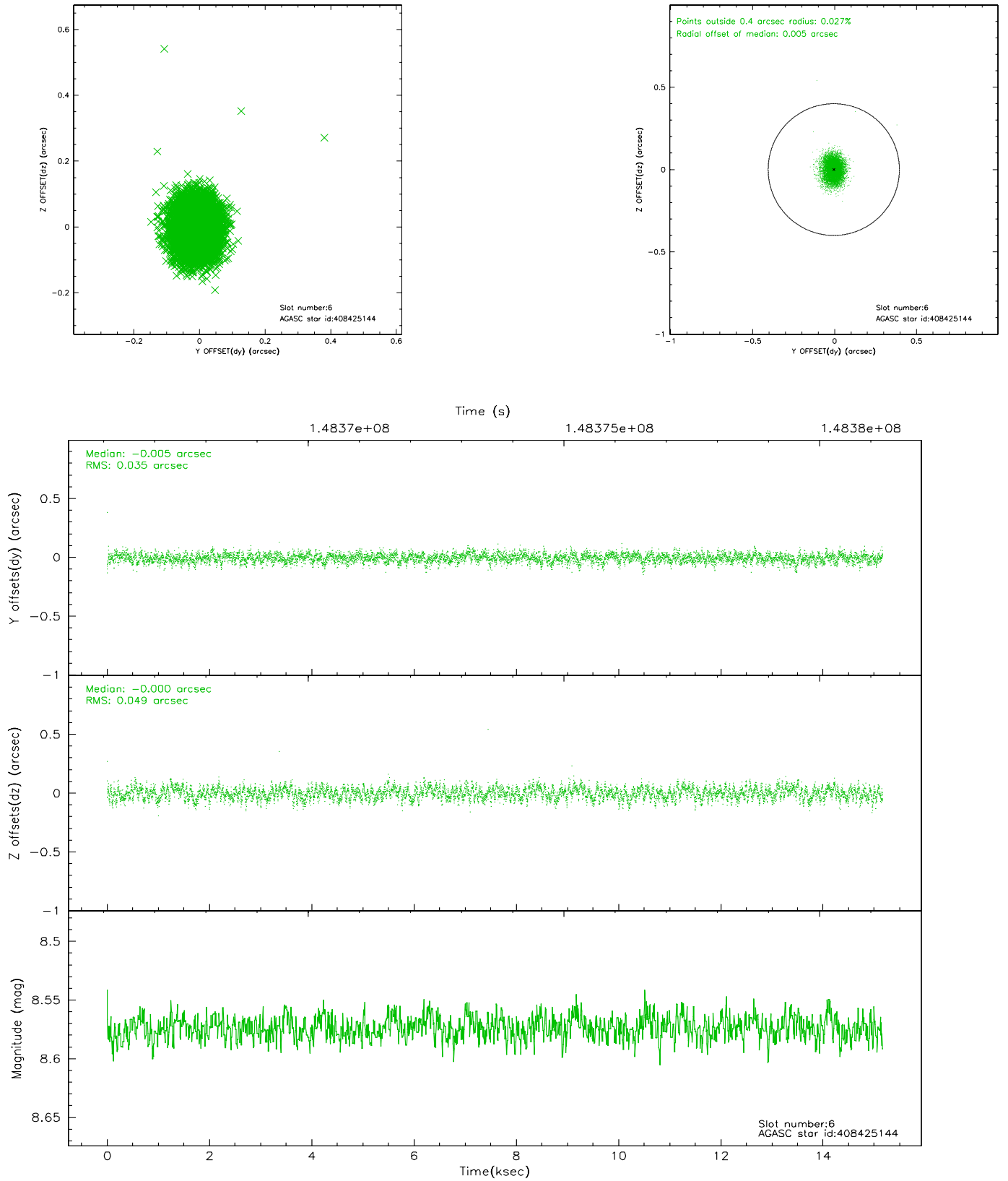
2.4.2 Slot 4



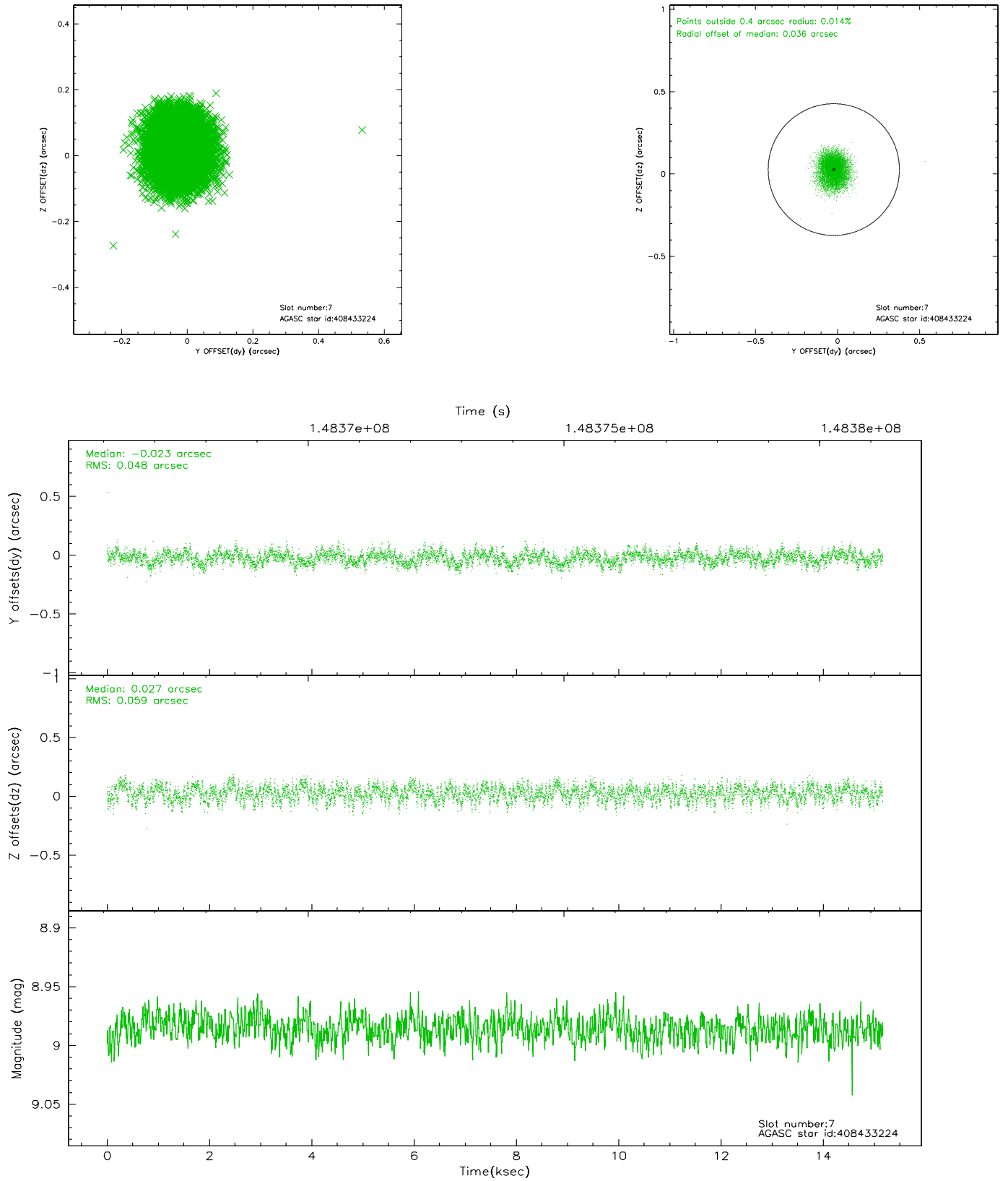
2.4.3 Slot 5



2.4.4 Slot 6

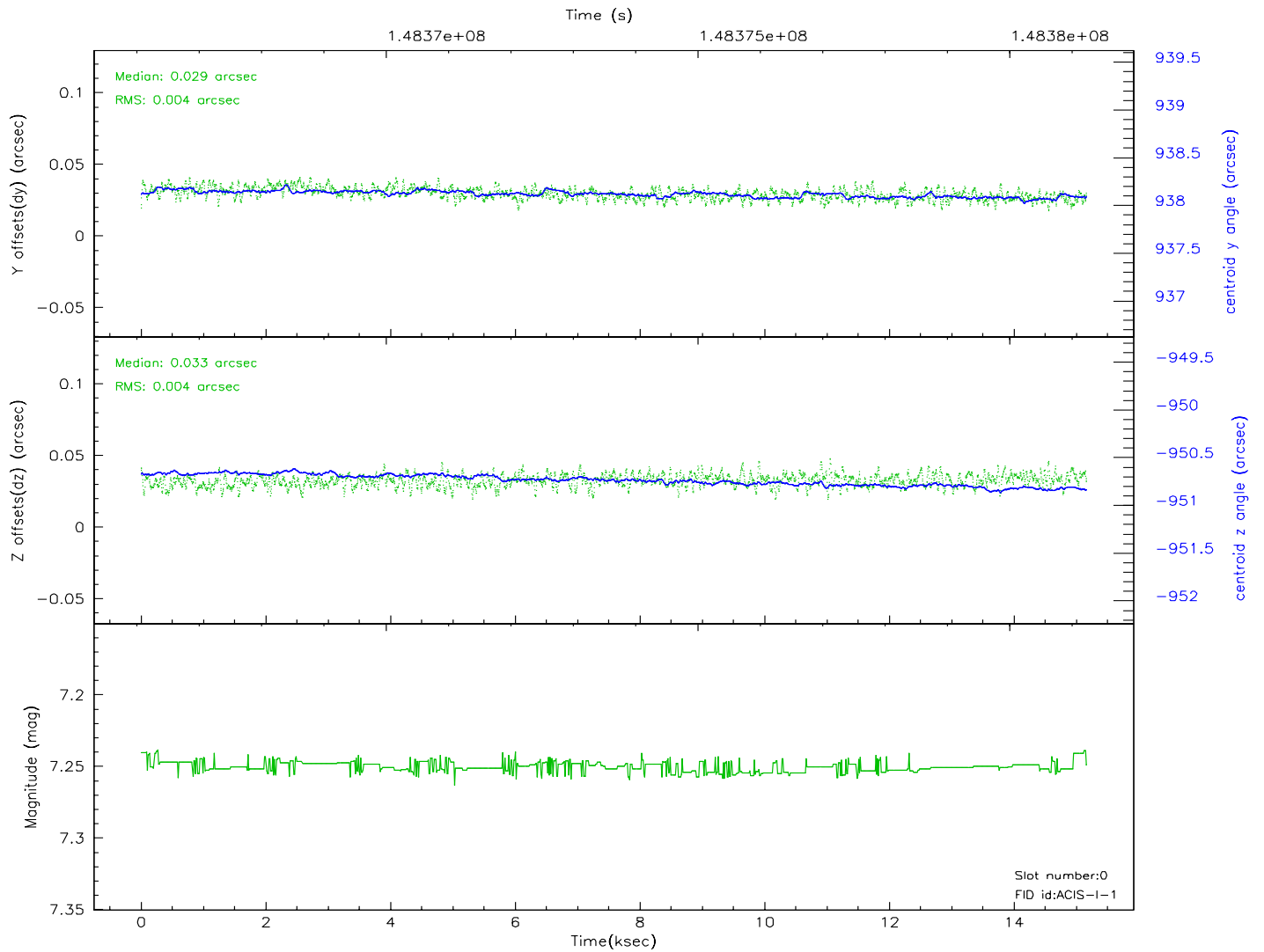
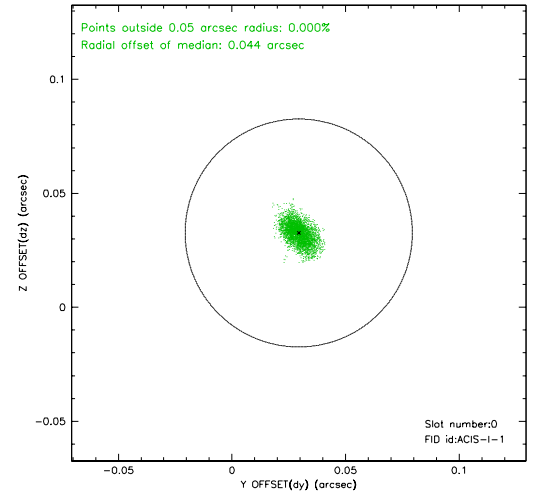
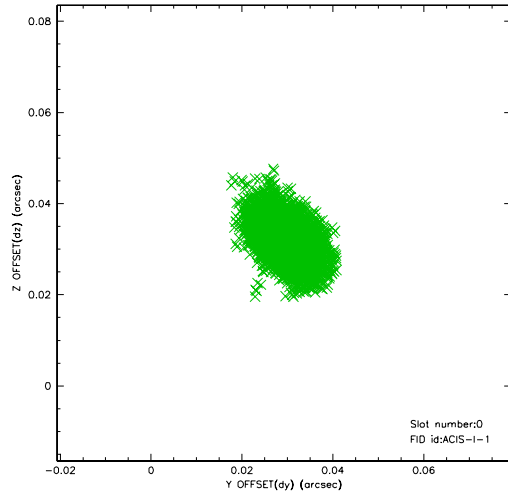


2.4.5 Slot 7

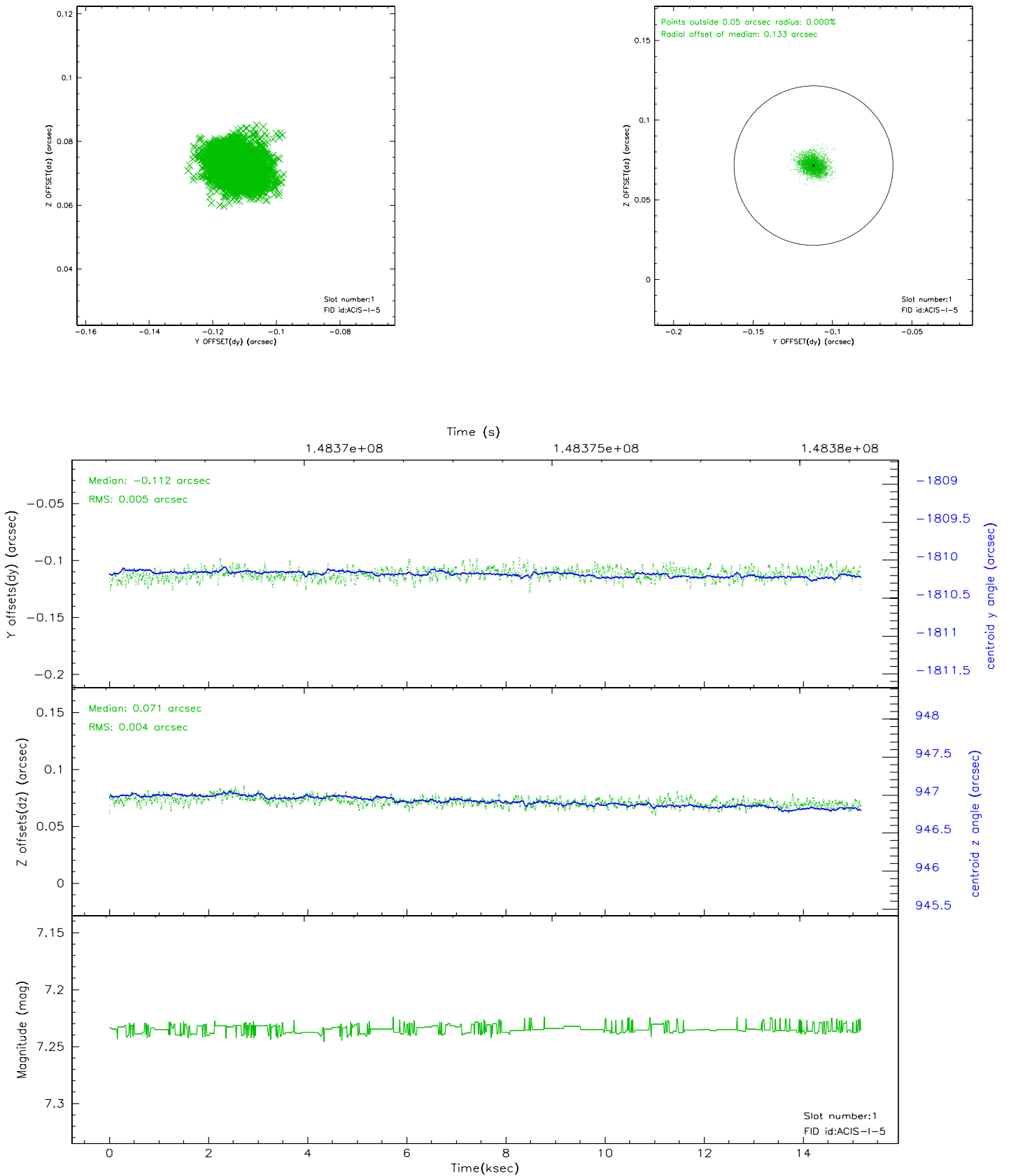


2.5 FID Slots

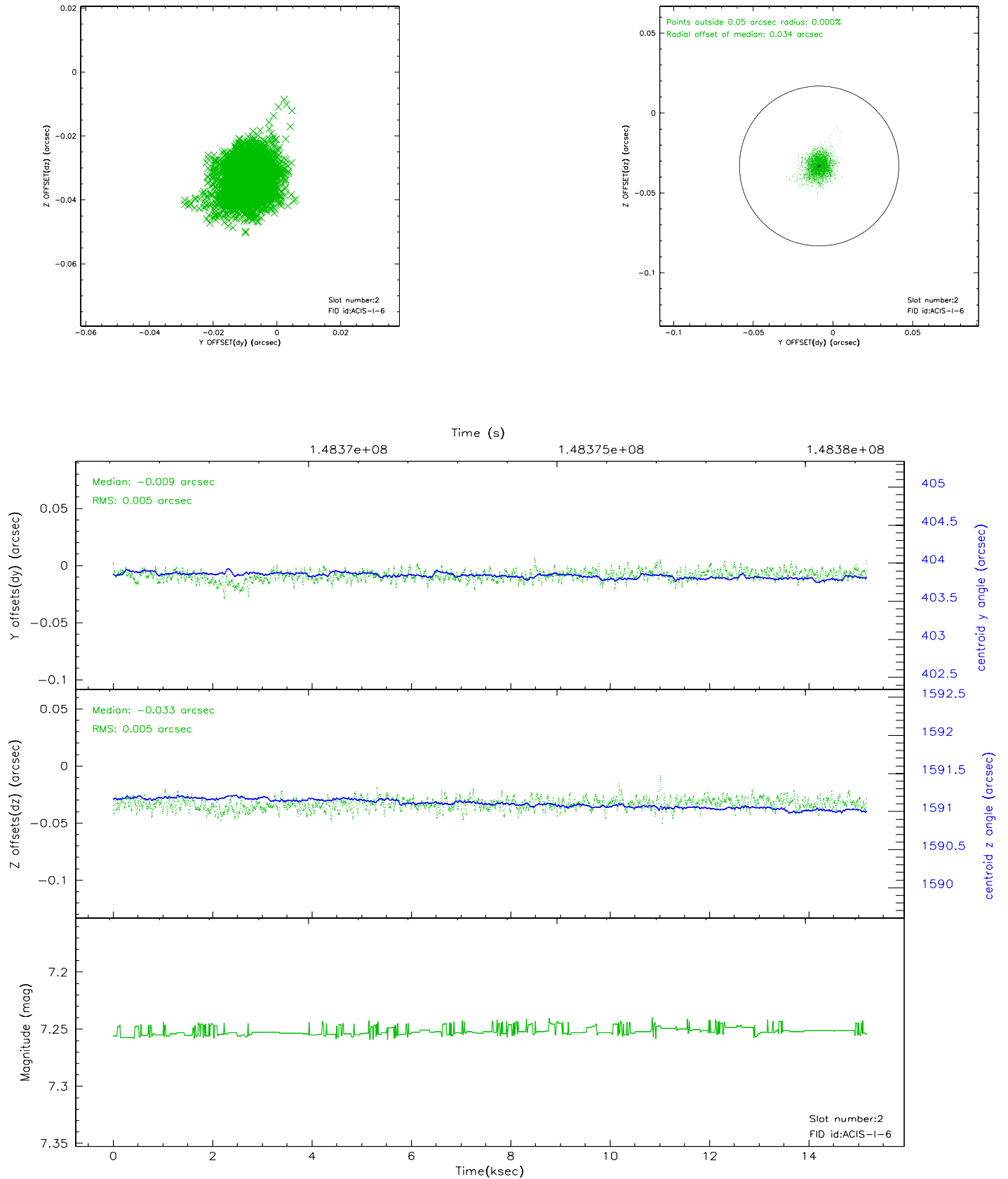
2.5.1 Slot 0



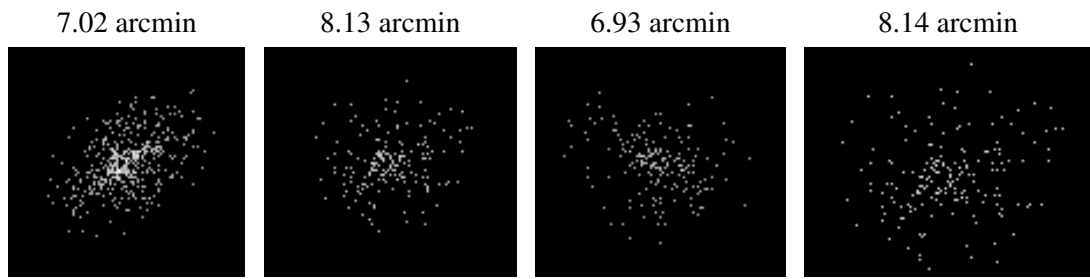
2.5.2 Slot 1



2.5.3 Slot 2



3 Point Sources



A Summary

A.1 Status

V&V Scientist	Jen Lauer
V&V Date (YYYY-MM-DD)	2006.10.04
V&V Edition	1
V&V Disposition and Status	OK
V&V Charge Time	15.121

A.2 Comments