

V&V Reference Report

L2 ASCDS Version : 8.4.5

Observation 3250 - L2 Version 3
Chandra X-Ray Center

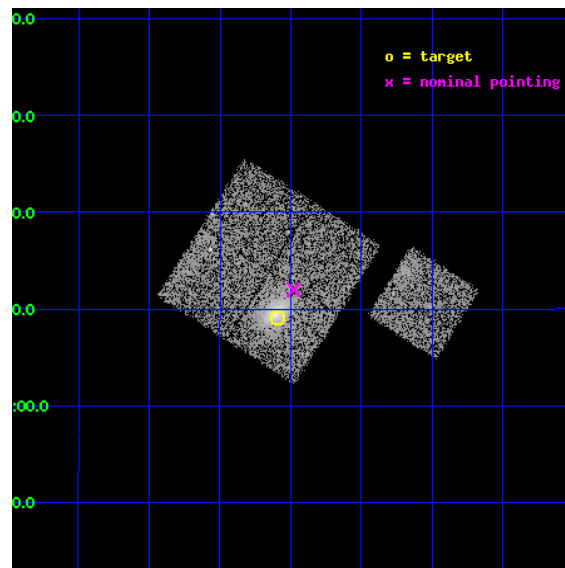
L2 Processing Date : Oct 13 2012

Contents

1	Front	2
2	OBI	3
2.1	OBI	3
2.1.1	Images	3
2.1.2	Bias	3
2.1.3	Parameters	4
2.1.4	Events	4
2.2	Compared Parameters	5
2.3	Aspect	6
2.4	Star Slots	9
2.4.1	Slot 3	9
2.4.2	Slot 4	10
2.4.3	Slot 5	11
2.4.4	Slot 6	12
2.4.5	Slot 7	13
2.5	FID Slots	14
2.5.1	Slot 0	14
2.5.2	Slot 1	15
2.5.3	Slot 2	16
A	Summary	17
A.1	Status	17
A.2	Comments	17

1 Front

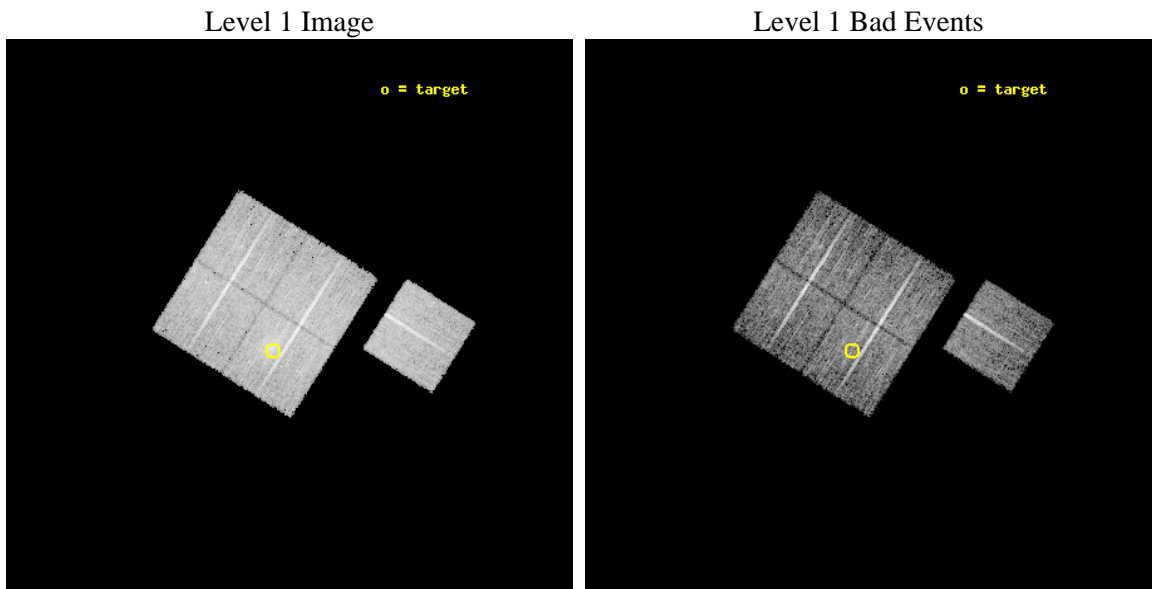
seq_num	800250	Sequence number
obs_id	3250	Observation id
title	OBSERVATION OF BCS CLUSTERS, FIRST SET	Proposal title
observer	DR. LEON VANSPEYBROECK	Principal investigator
object	A68	Source name
dtcycle	0	
cycle	P	events from which exps? Prim/Second/Both
ra_targ	9.272083	Observer's specified target RA [deg]
dec_targ	9.152778	Observer's specified target Dec [deg]
ra_nom	9.244379695363	Nominal RA [deg]
dec_nom	9.1997630877372	Nominal Dec [deg]
roll_nom	122.29449812773	Nominal Roll [deg]
revision	3	Processing version of data
ontime	10118.399980515	Sum of GTIs [s]
livetime	9986.1956357121	Livetime [s]
ontime0	10118.399980515	Sum of GTIs [s]
ontime1	10115.258980364	Sum of GTIs [s]
ontime2	10118.399980515	Sum of GTIs [s]
ontime3	10118.399980515	Sum of GTIs [s]
ontime6	10118.399980515	Sum of GTIs [s]
l2events	29222	Number of level 2 events



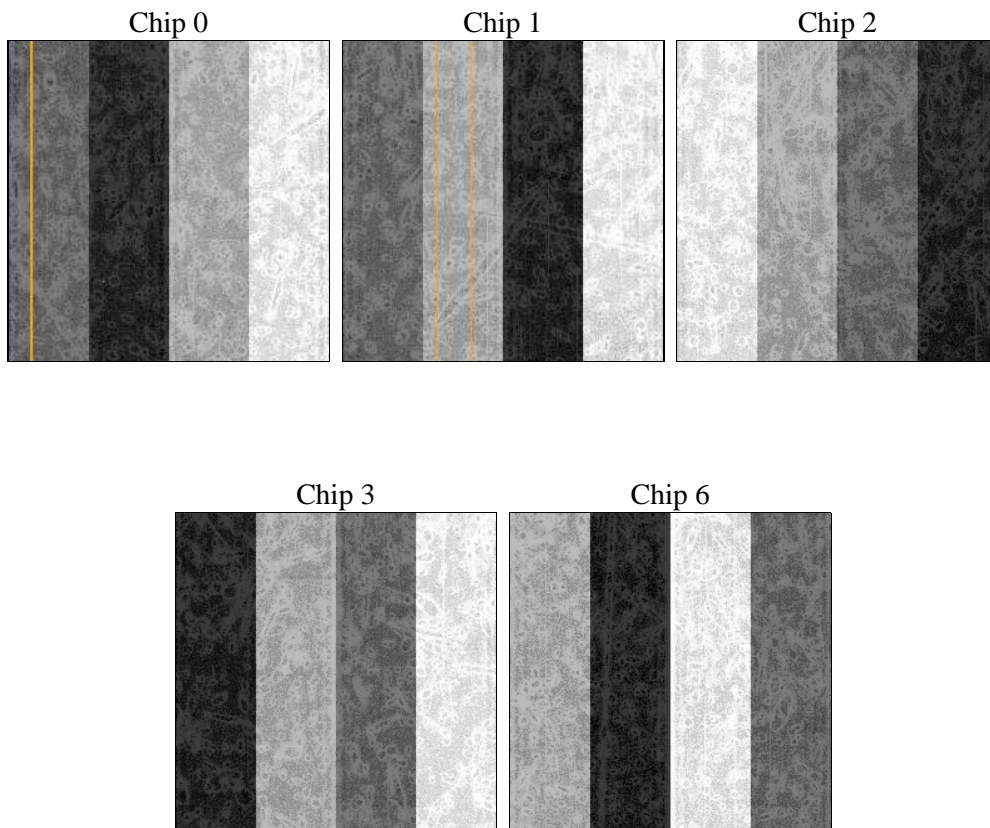
2 OBI

2.1 OBI

2.1.1 Images



2.1.2 Bias



2.1.3 Parameters

obi_num	0	Obi number	sched_exp_time	10000.000000	[s] Scheduled observation exposure time
ascdsver	8.4.5	Processing system revision	ontime	10118.399980515	Sum of GTIs [s]
caldsver	4.5.2	 	ontime0	10118.399980515	Sum of GTIs [s]
date	2012-10-13T05:59:03	Date and time of file creation	ontime1	10115.258980364	Sum of GTIs [s]
revision	3	Processing version of data	ontime2	10118.399980515	Sum of GTIs [s]
			ontime3	10118.399980515	Sum of GTIs [s]
			ontime6	10118.399980515	Sum of GTIs [s]
			l1events	280710	Number of level 1 events

2.1.4 Events

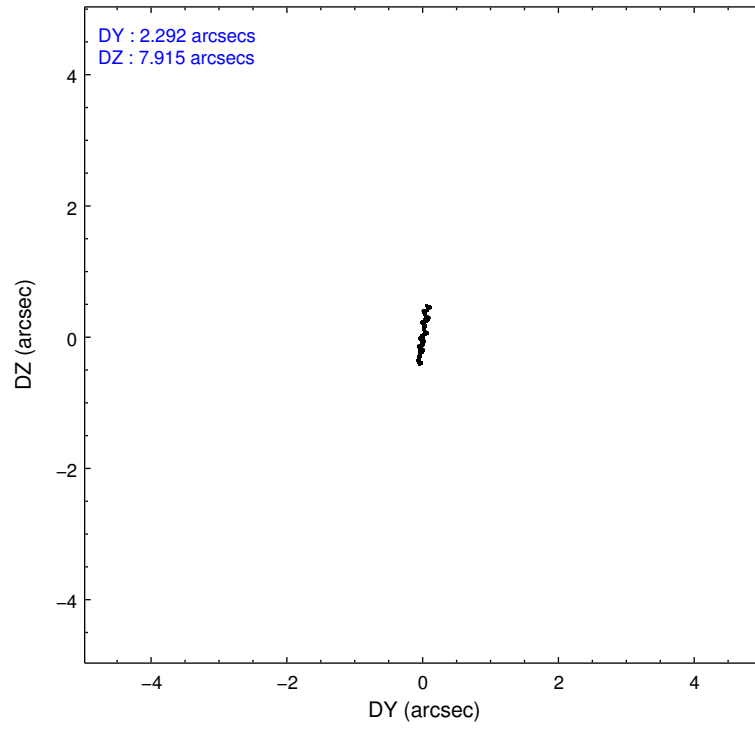
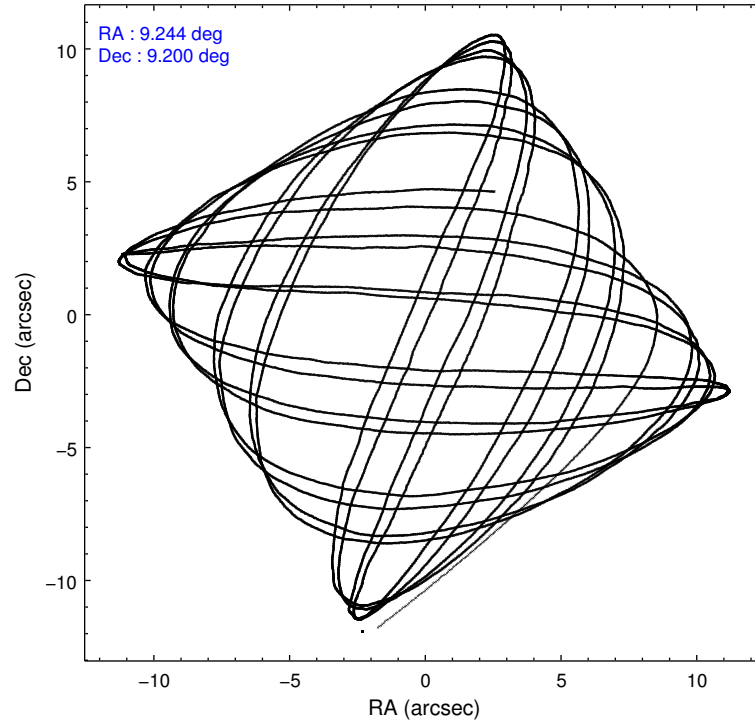
	ccd 0	ccd 1	ccd 2	ccd 3	ccd 6
level 1 events	52482	52099	58854	61562	55713
rejected events	46709	45679	52836	50829	49607
rejected %	89%	87%	89%	82%	89%

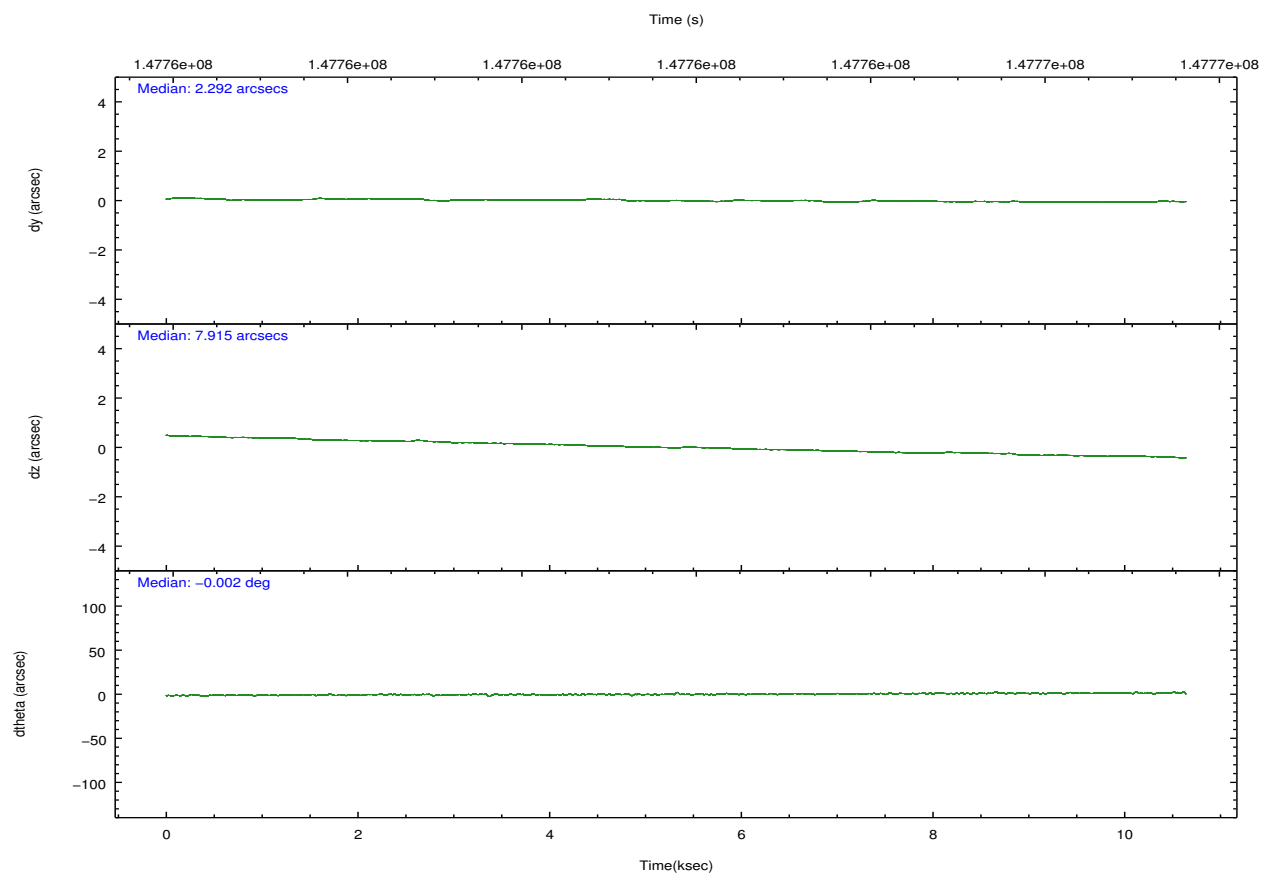
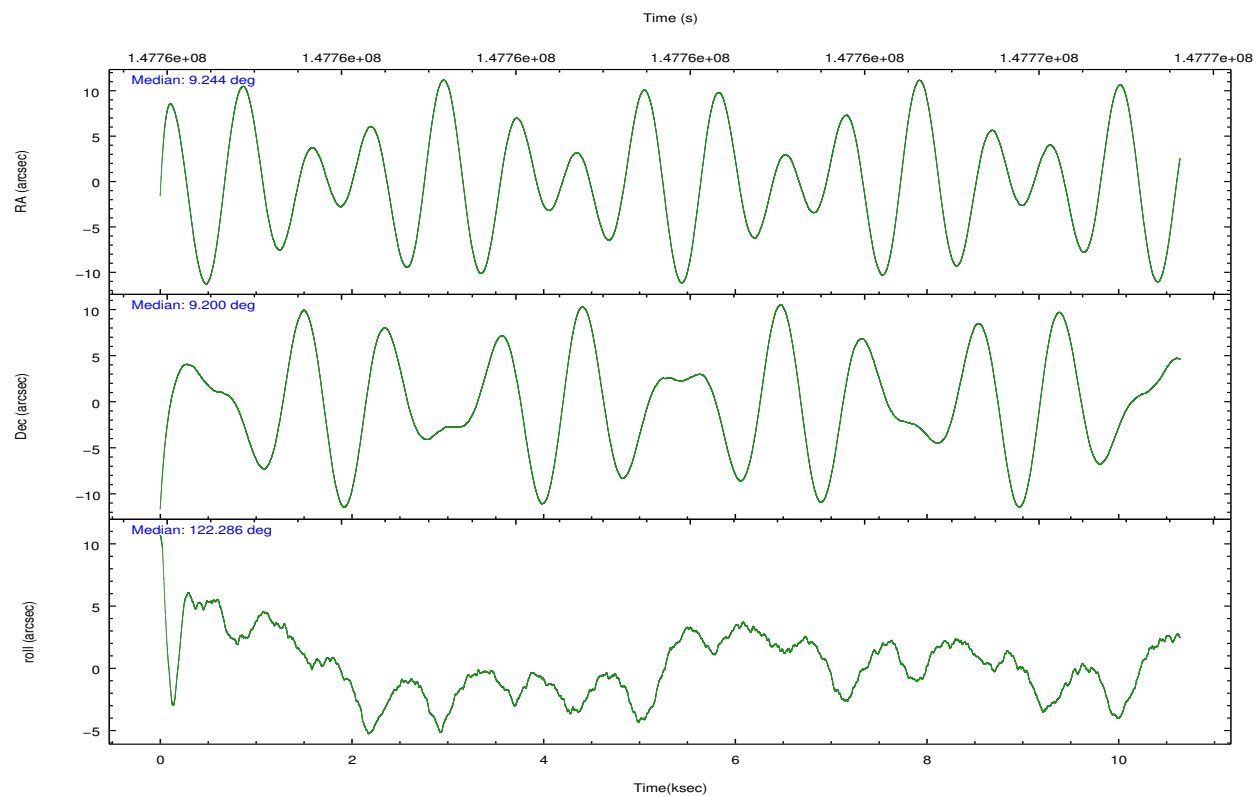
	ccd 0	ccd 1	ccd 2	ccd 3	ccd 6
grade 0 events	2078	2509	2303	6461	2355
	3%	4%	3%	10%	4%
grade 1 events	28	26	21	62	34
	0%	0%	0%	0%	0%
grade 2 events	1456	1384	1437	1672	1362
	2%	2%	2%	2%	2%
grade 3 events	657	654	612	755	643
	1%	1%	1%	1%	1%
grade 4 events	582	631	647	759	601
	1%	1%	1%	1%	1%
grade 5 events	1744	1910	1795	1957	2060
	3%	3%	3%	3%	3%
grade 6 events	1001	1246	1020	1091	1146
	1%	2%	1%	1%	2%
grade 7 events	44936	43739	51019	48805	47512
	85%	83%	86%	79%	85%

2.2 Compared Parameters

Parameter	Planned	Actual	Parameter	Planned	Actual
Instrument	ACIS	ACIS	Obspar format version number	7	7
Detector	ACIS-01236	ACIS-01236	Obspar file type	PREDICTED	ACTUAL
Grating	NONE	NONE	Obspar update status	NONE	UPDATED
Data mode	VFAINT	VFAINT	Number of optional ACIS chips dropped	0	0
Observation mode	POINTING	POINTING	On-chip summing requested	N	N
[deg] Pointing RA	9.269033	9.244379695362975	Subarray requested	NONE	NONE
[deg] Pointing Dec	9.187088	9.199763087737194	Alternating exposures requested	N	N
[deg] Pointing Roll	122.081860	122.2944981277337	[s] Primary exposure time	0.000000	3.1
[mm] SIM focus pos	-0.782348	-0.7809083437167272			
[mm] SIM defocus	0	0.001439871863259334			
[mm] SIM translation stage pos	-225.840463	-225.8458576473255			
[mm] SIM translation stage offset	-7.752	-7.746595355604228			
[s] Observation start time (MET)	147757087.184000	147755901.73874			
Observation start date	2002-09-07T03:37:03	2002-09-07T03:18:21			
[s] Observation end time (MET)	147767087.184000	147767739.97673			
Observation end date	2002-09-07T06:23:43	2002-09-07T06:35:39			
Read mode	TIMED	TIMED			

2.3 Aspect



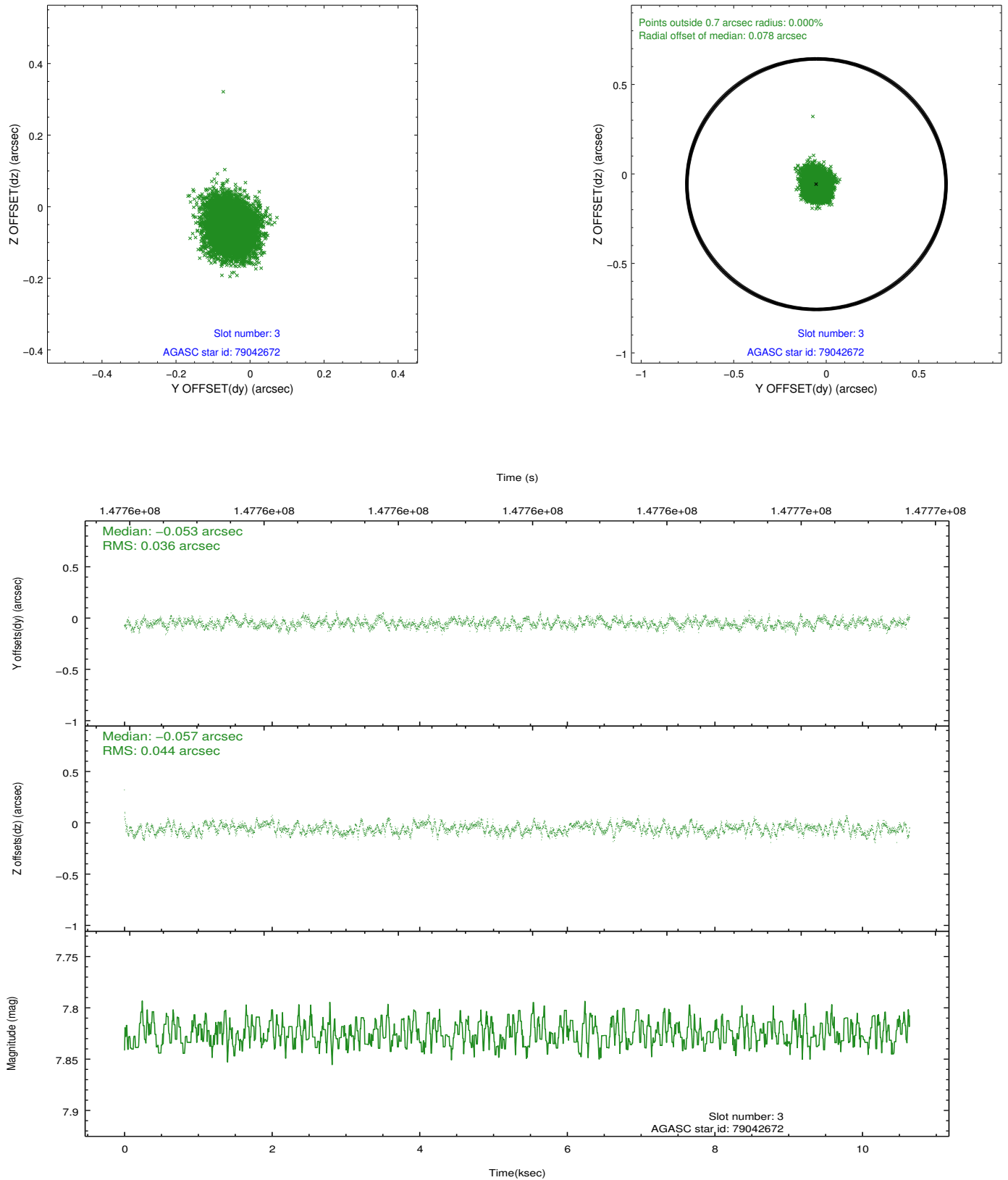


Slot Statistics

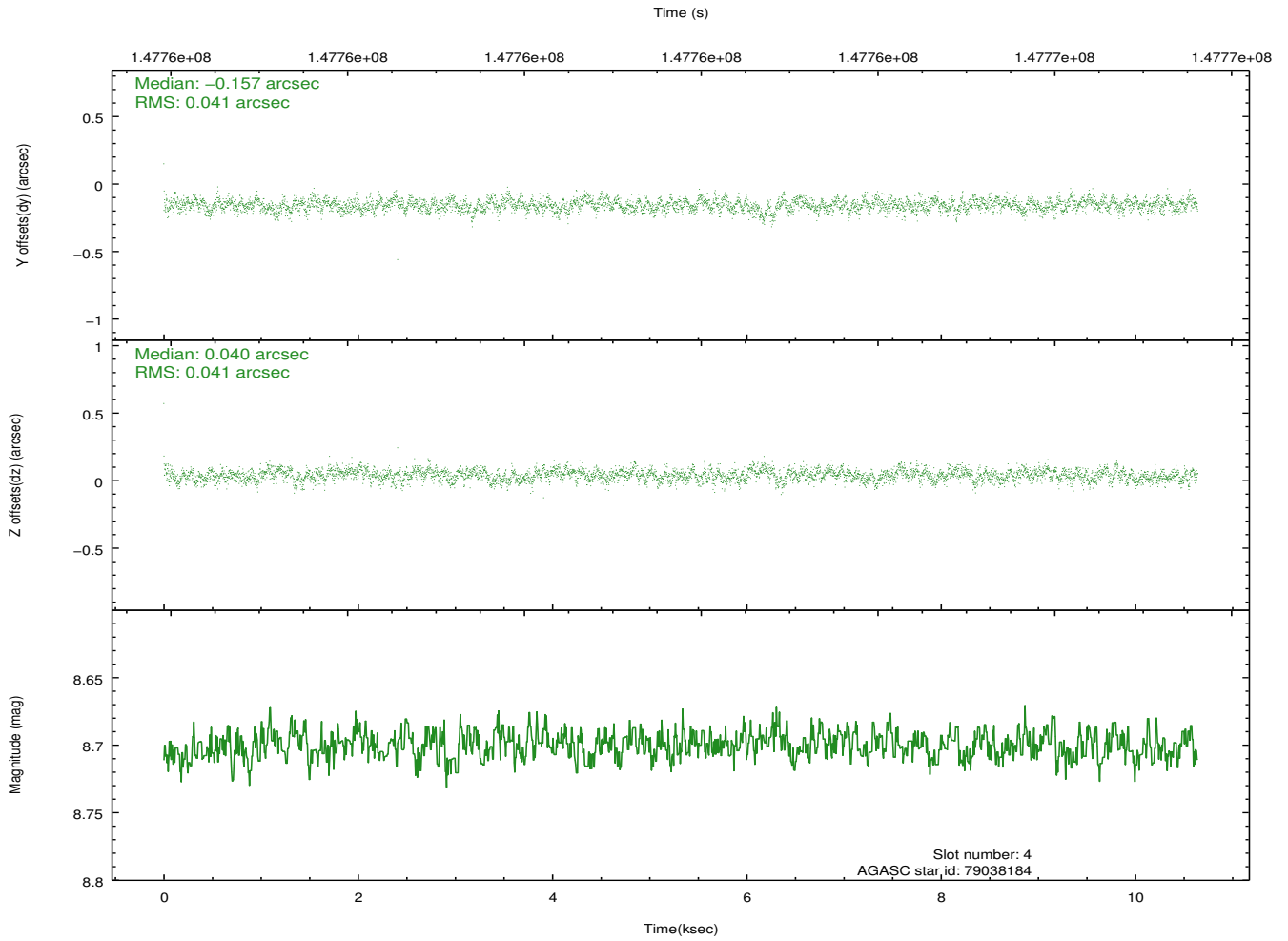
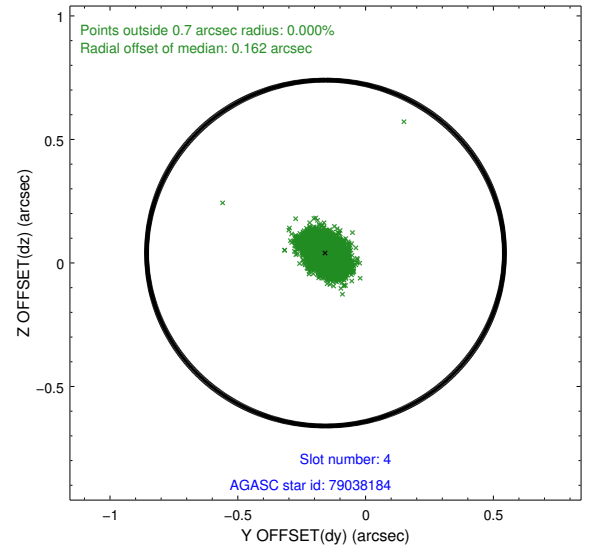
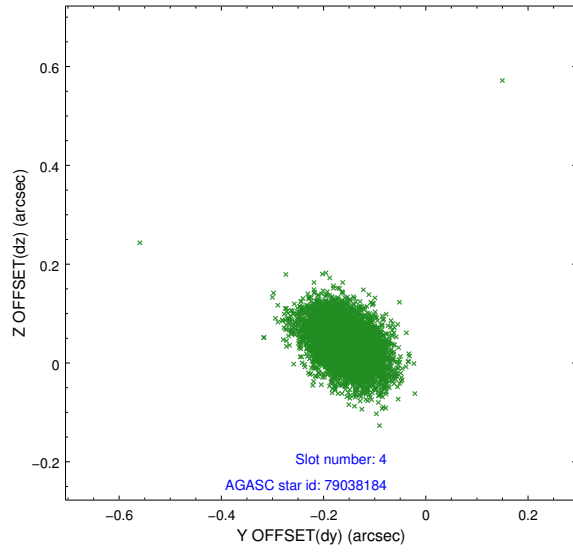
slot	status	id	mag	n_pts	med_dy	med_dz	dr1	dr2	ra	dec	mean_y	mean_z
0	FID	ACIS-I-1	7.23	2596	0.068	-0.033	0.012	0.020	0.000000	0.000000	937.43	-990.41
1	FID	ACIS-I-5	7.22	2596	-0.143	0.091	0.010	0.014	0.000000	0.000000	-1810.60	906.92
2	FID	ACIS-I-6	7.26	2596	-0.017	0.013	0.010	0.016	0.000000	0.000000	402.38	1551.89
3	GUIDE	79042672	7.83	5186	-0.053	-0.057	0.061	0.096	9.101279	8.874127	-638.25	1104.18
4	GUIDE	79038184	8.70	5189	-0.157	0.040	0.061	0.102	9.407660	9.641439	1124.11	-1284.84
5	GUIDE	79038808	9.14	5190	0.027	-0.131	0.080	0.134	9.345153	9.001715	-709.57	125.01
6	GUIDE	79039168	9.45	5187	0.013	0.151	0.093	0.150	9.837457	9.144543	-1201.83	-1630.89
7	GUIDE	79039376	9.38	5180	0.170	0.003	0.091	0.154	9.524640	9.201968	-437.25	-798.20

2.4 Star Slots

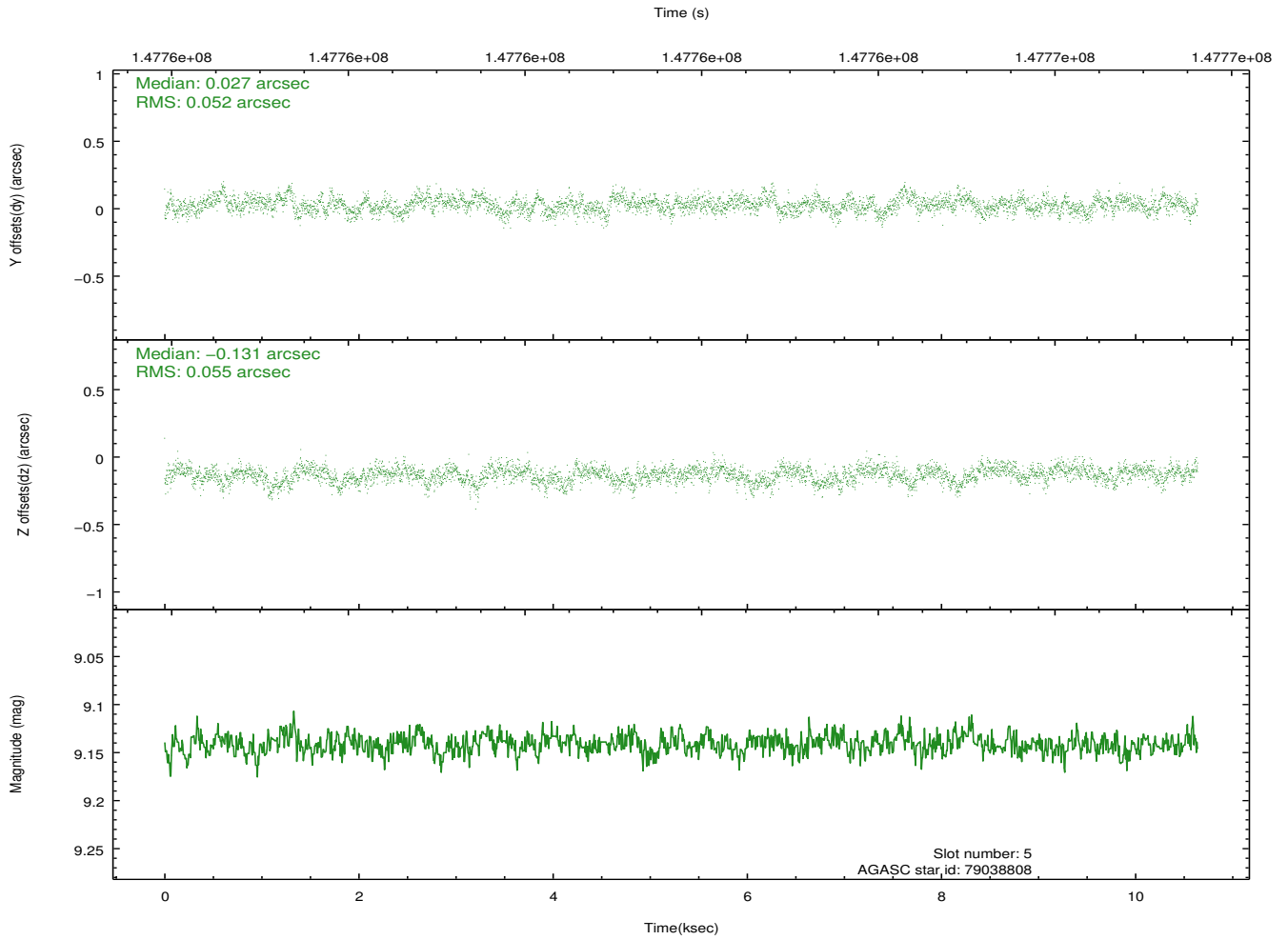
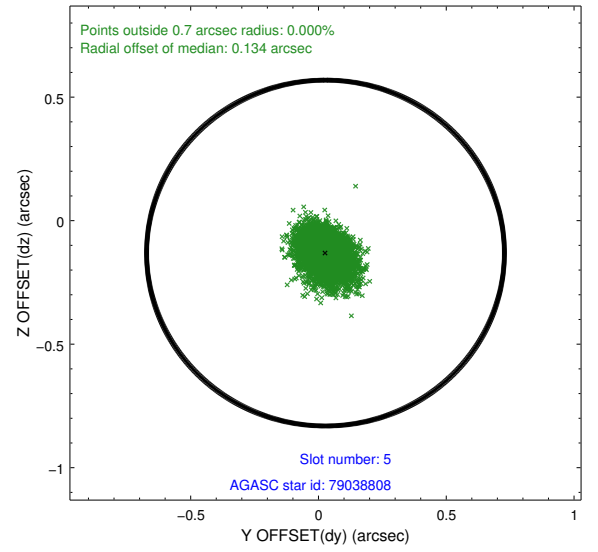
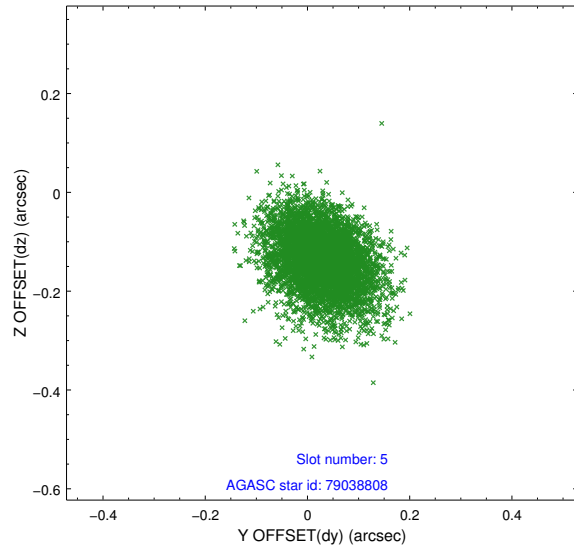
2.4.1 Slot 3



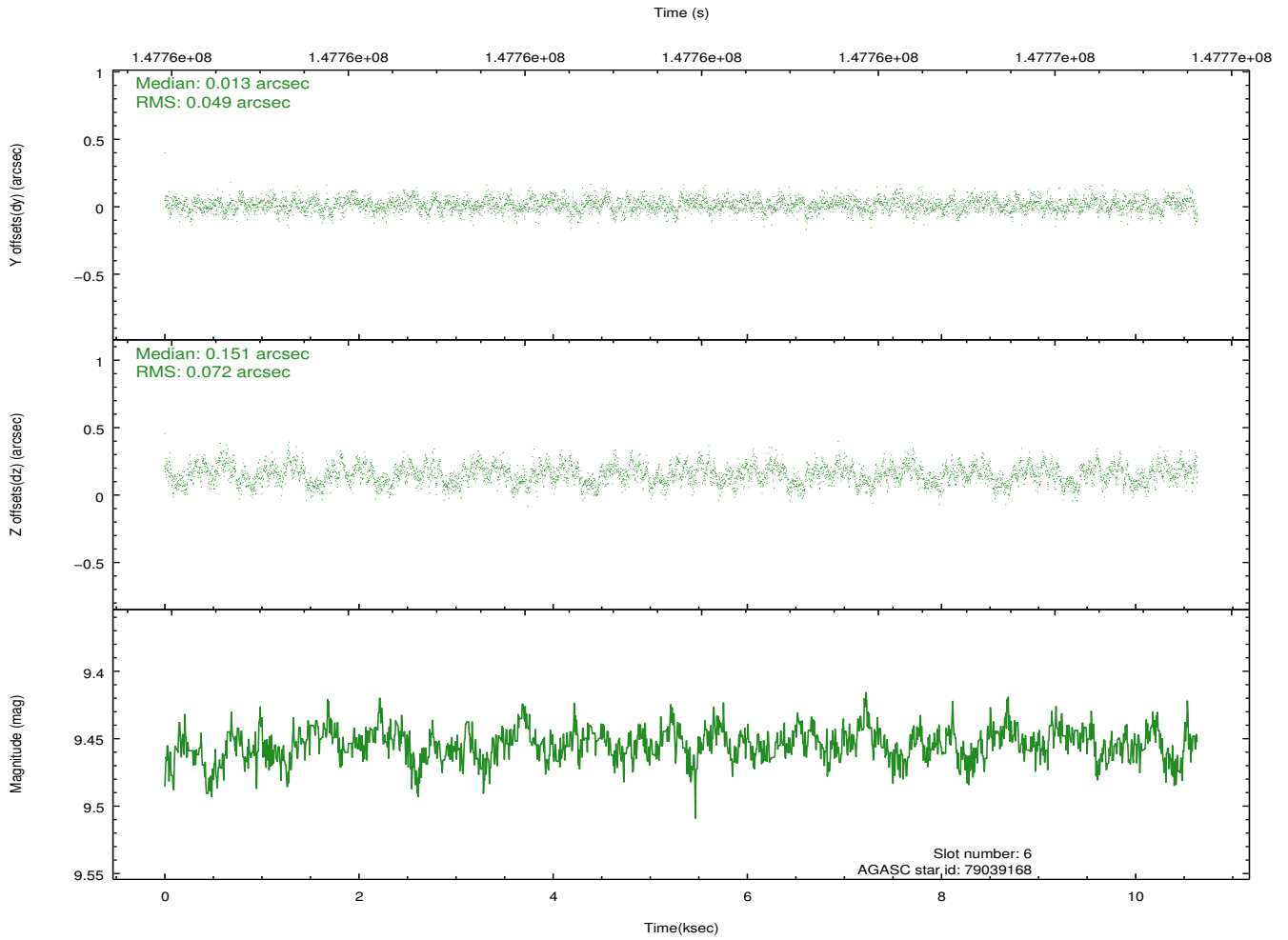
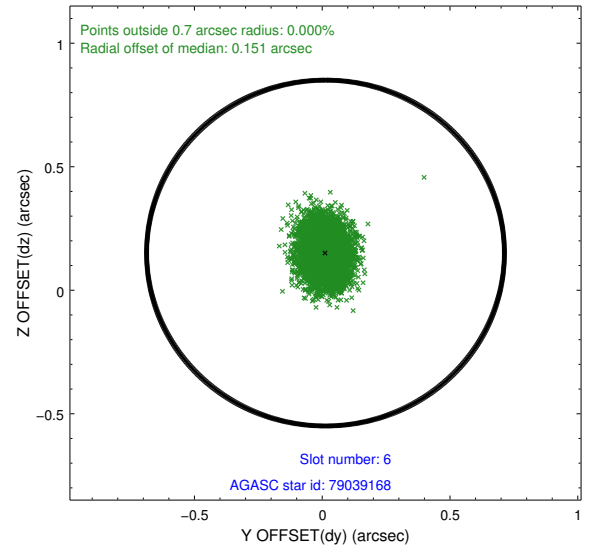
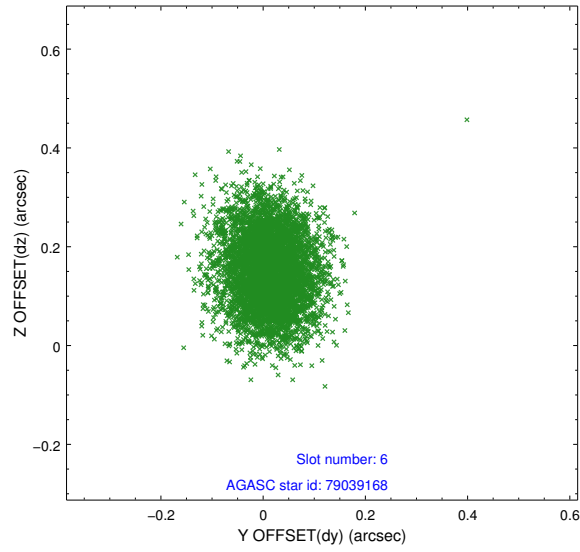
2.4.2 Slot 4



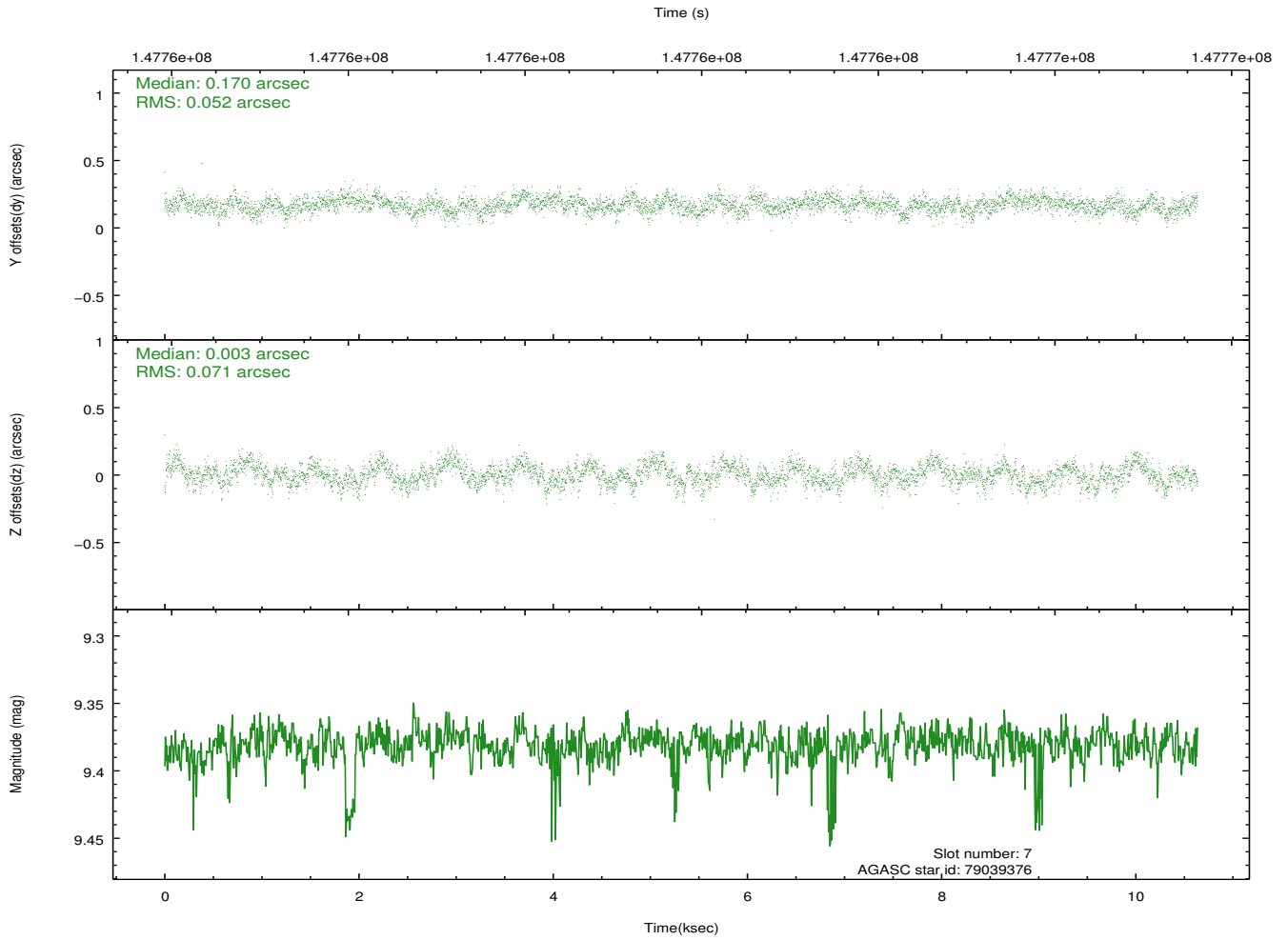
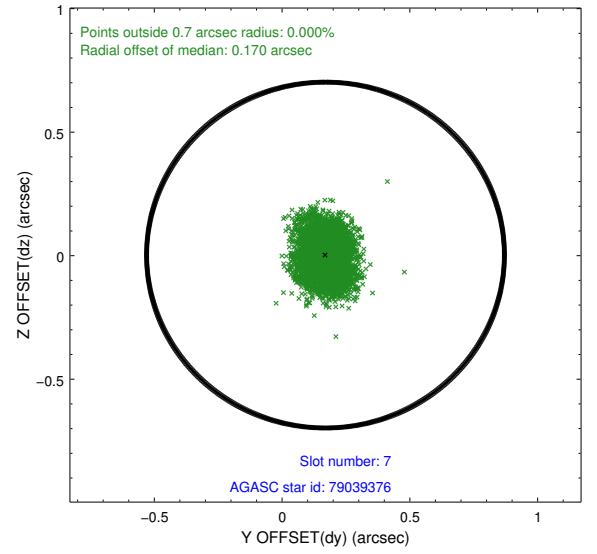
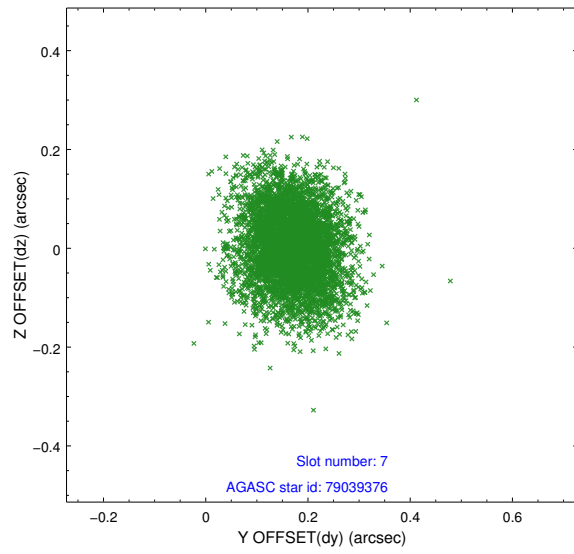
2.4.3 Slot 5



2.4.4 Slot 6

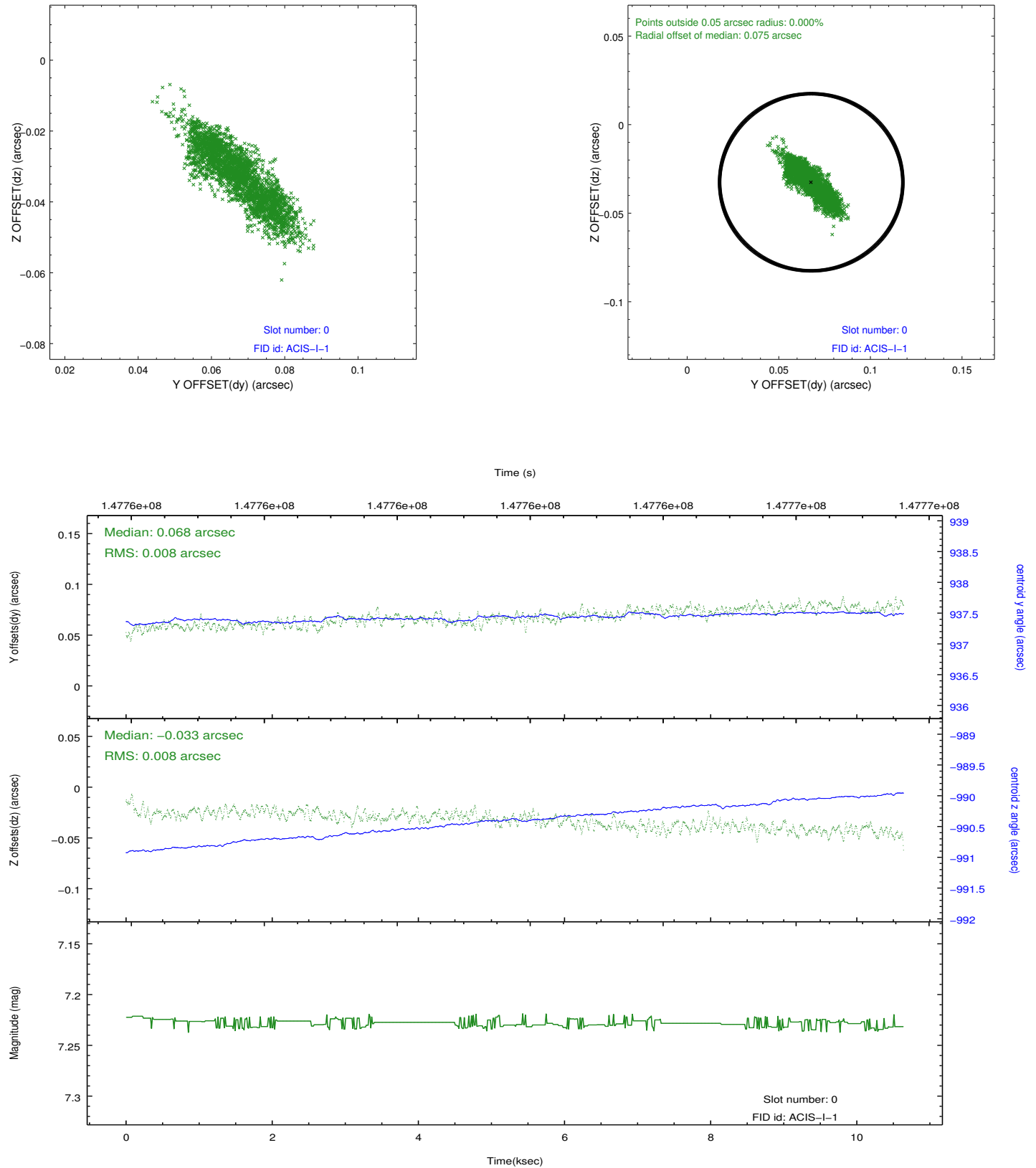


2.4.5 Slot 7

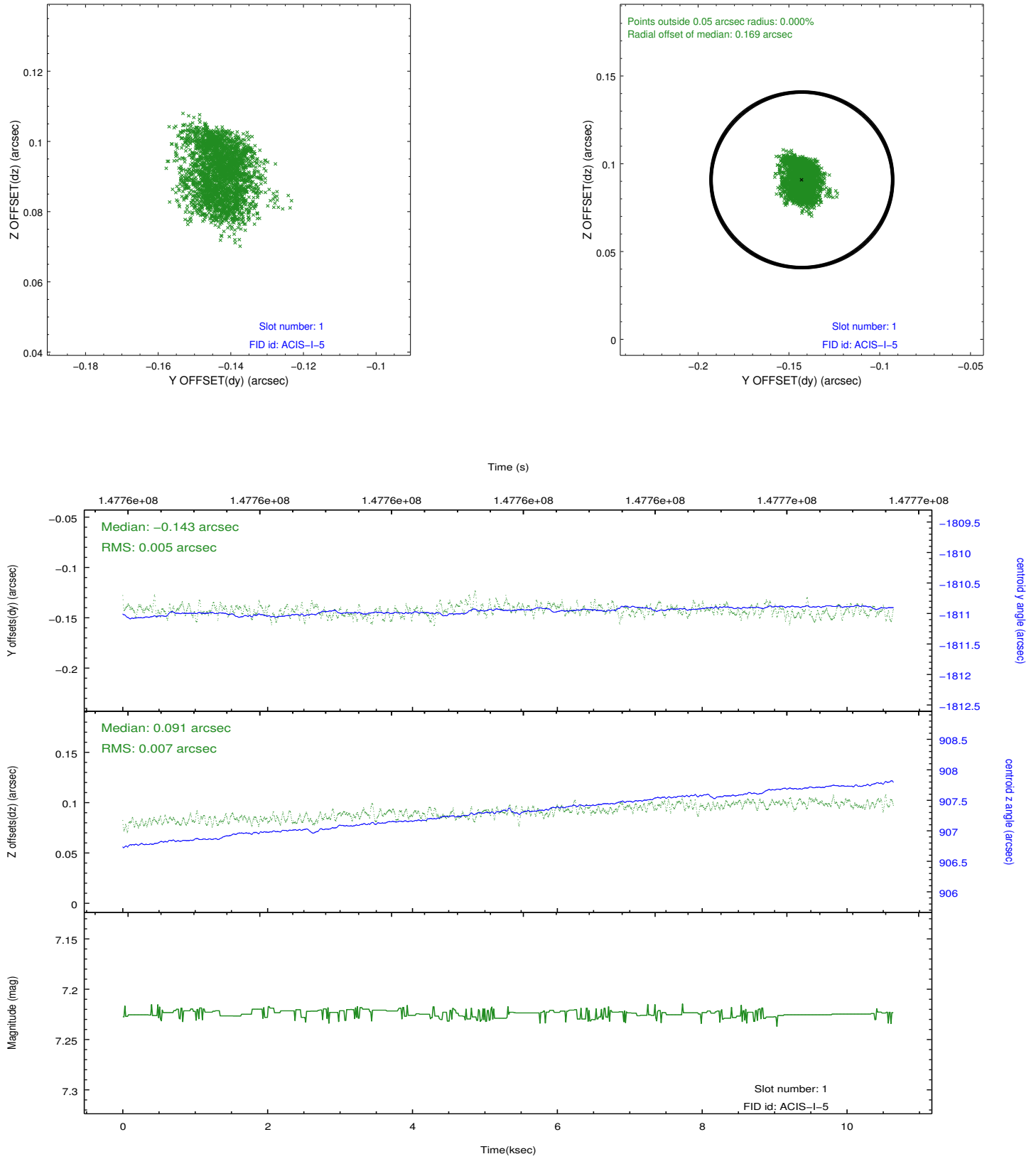


2.5 FID Slots

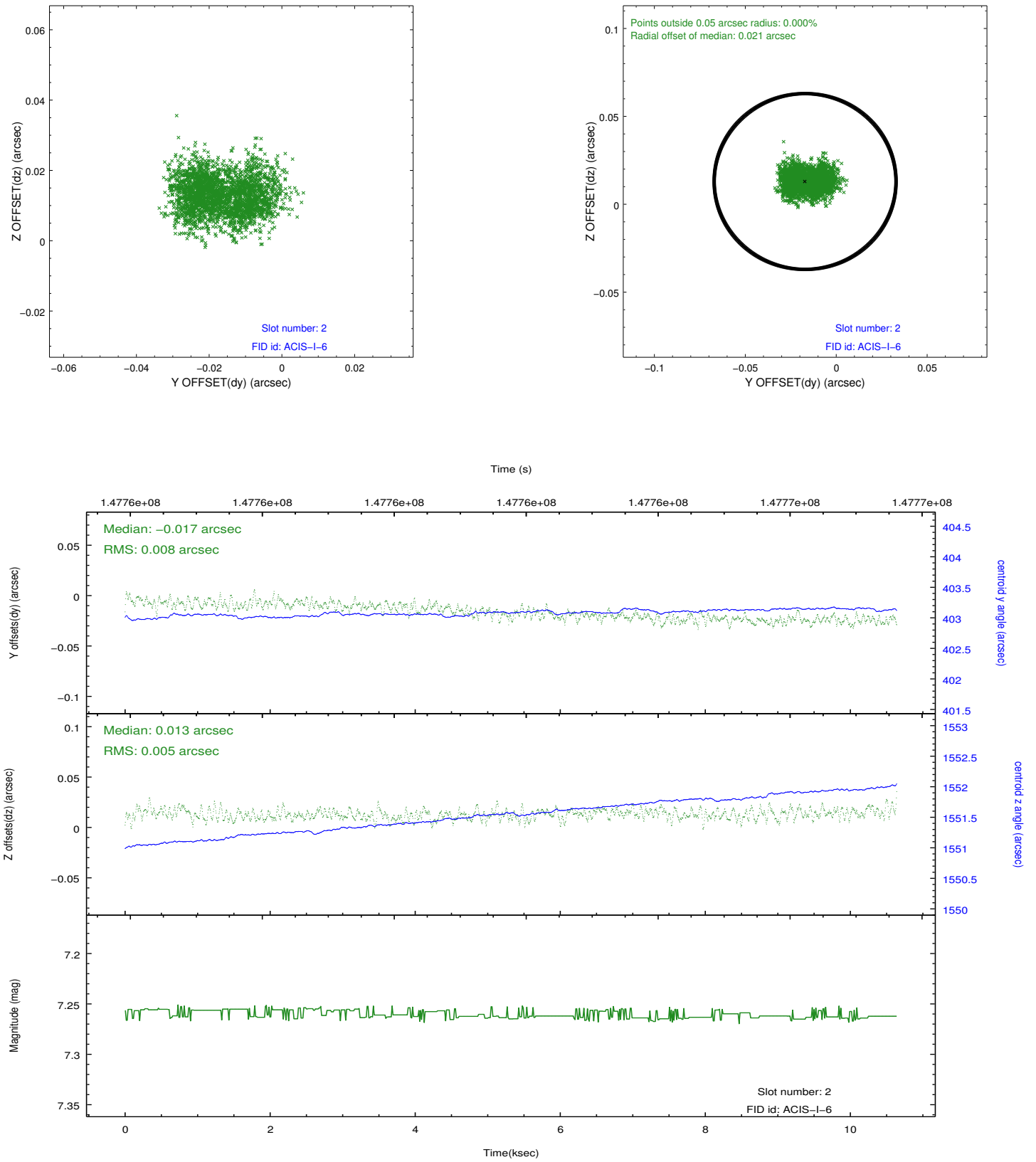
2.5.1 Slot 0



2.5.2 Slot 1



2.5.3 Slot 2



A Summary

A.1 Status

V&V Scientist	Jen Lauer
V&V Date (YYYY-MM-DD)	2012.10.22
V&V Edition	1
V&V Disposition and Status	OK
V&V Charge Time	10.121

A.2 Comments