

V&V Reference Report

L2 ASCDS Version : 7.6.10

Observation 3246 - L2 Version 001
Chandra X-Ray Center

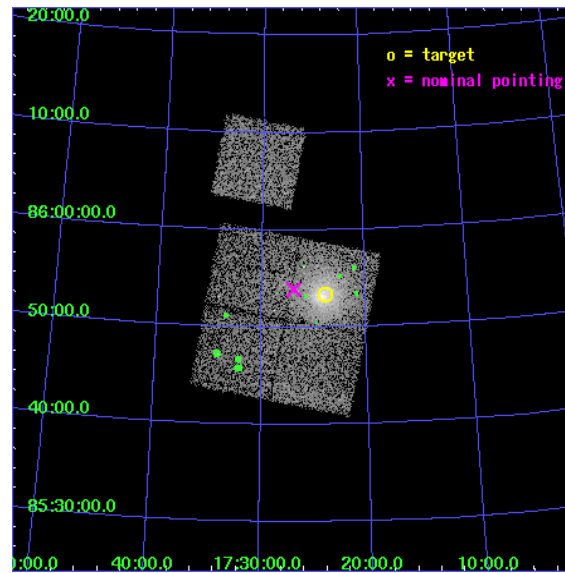
L2 Processing Date : Jan 16 2007

Contents

1	Front	2
2	OBI	3
2.1	OBI	3
2.1.1	Images	3
2.1.2	Bias	3
2.1.3	Parameters	4
2.1.4	Events	4
2.2	Compared Parameters	5
2.3	Aspect	6
2.4	Star Slots	9
2.4.1	Slot 3	9
2.4.2	Slot 4	10
2.4.3	Slot 5	11
2.4.4	Slot 6	12
2.4.5	Slot 7	13
2.5	FID Slots	14
2.5.1	Slot 0	14
2.5.2	Slot 1	15
2.5.3	Slot 2	16
3	Point Sources	17
A	Summary	18
A.1	Status	18
A.2	Comments	18

1 Front

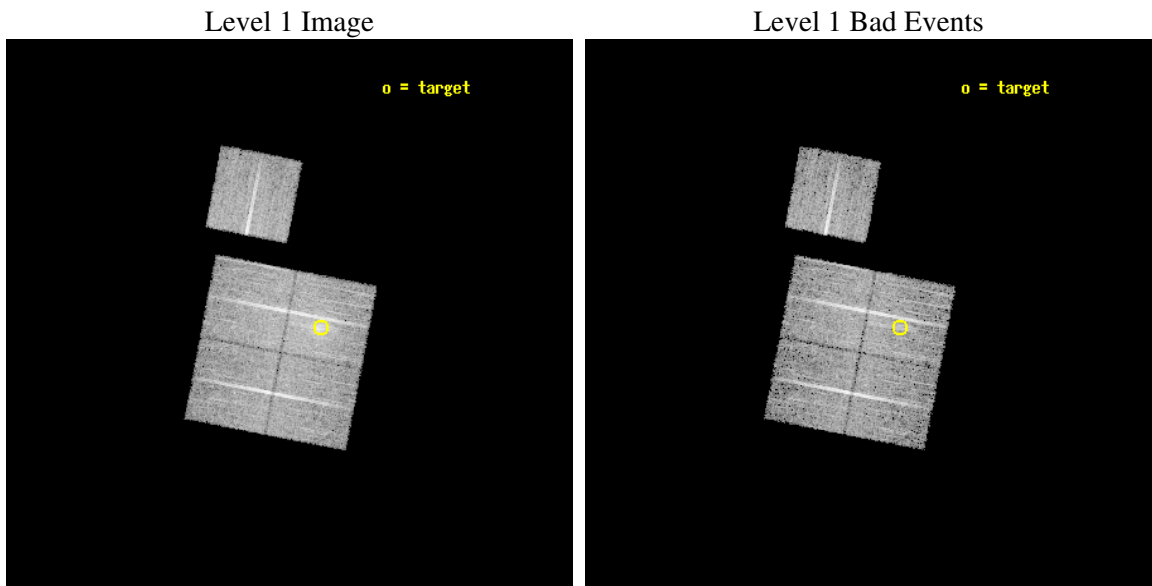
seq_num	800246
obs_id	3246
title	OBSERVATION OF BCS CLUSTERS, SECOND SET
observer	DR. LEON VANSPEYBROECK
object	A2294
dtcycle	0
cycle	P
ra_targ	260.98
dec_targ	85.89
ra_nom	261.72968253079
dec_nom	85.898733777156
roll_nom	11.028376872351
revision	2
ontime	10118.399980545
livetime	9986.1956357415
ontime0	10115.259020299
ontime1	10118.399980545
ontime2	10112.118000224
ontime3	10118.399980545
ontime6	10118.399980545
l2events	34661



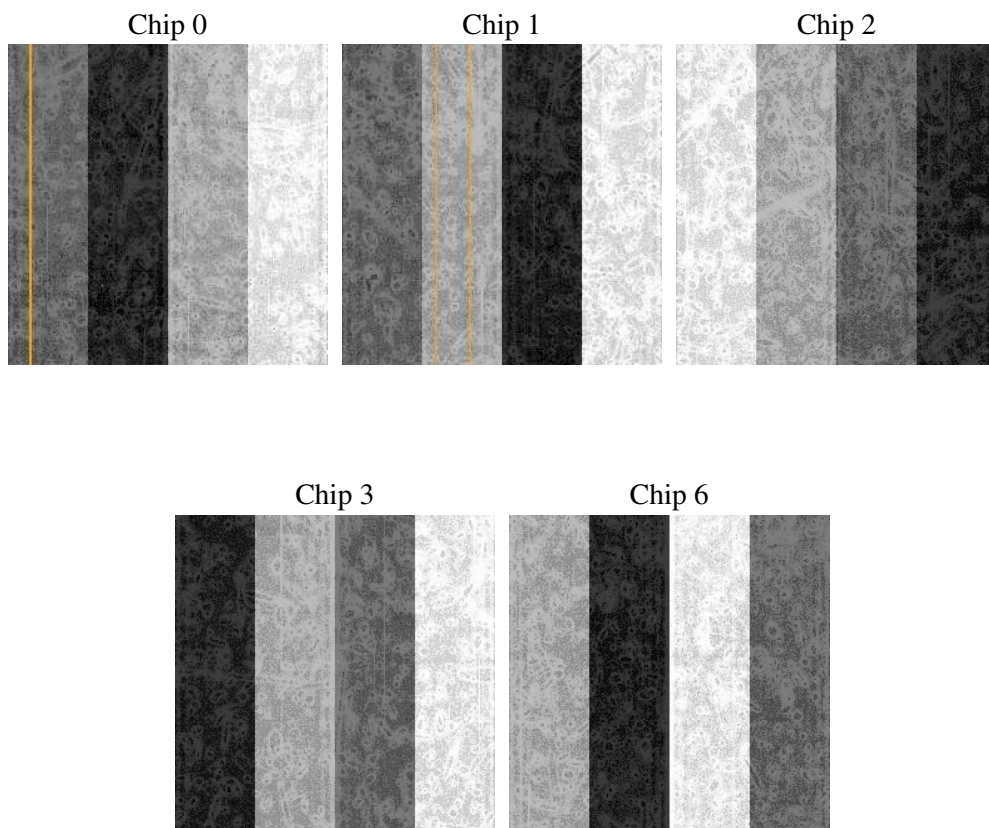
2 OBI

2.1 OBI

2.1.1 Images



2.1.2 Bias



2.1.3 Parameters

obi_num	0
ascdsver	7.6.10
caldbver	3.3.0
date	2007-01-17T01:01:58
revision	2

sched_exp_time	10000.000000
ontime	10118.399980545
ontime0	10115.259020299
ontime1	10118.399980545
ontime2	10112.118000224
ontime3	10118.399980545
ontime6	10118.399980545
l1events	288958

2.1.4 Events

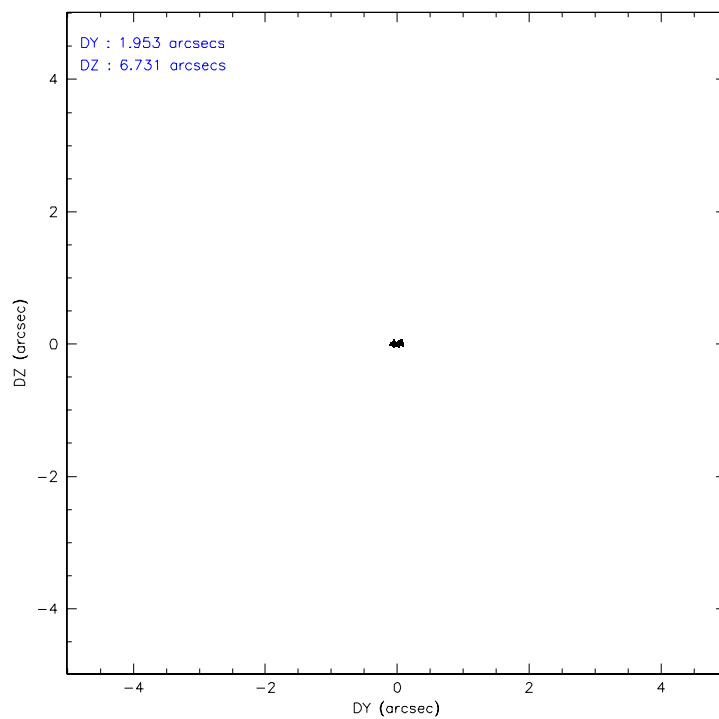
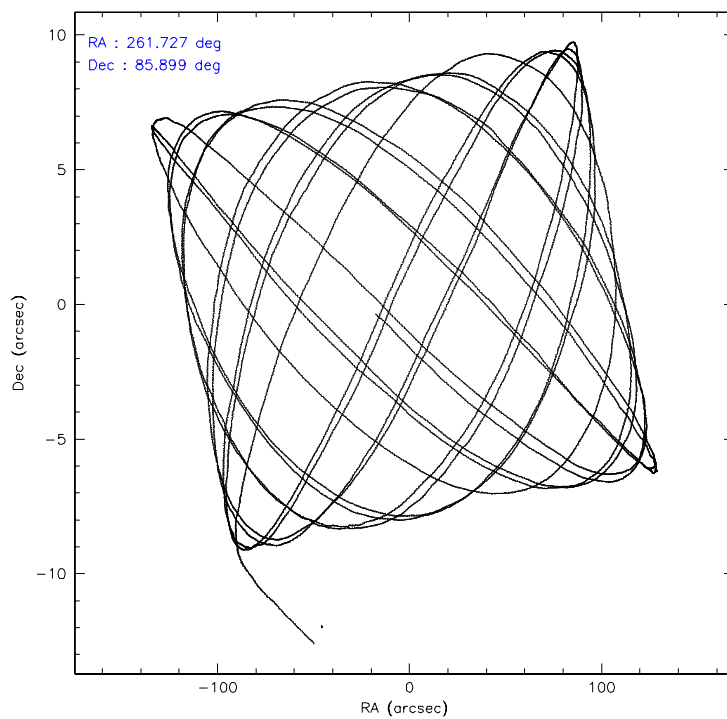
	ccd 0	ccd 1	ccd 2	ccd 3	ccd 6
level 1 events	50669	52361	60024	68514	57390
rejected events	44731	45693	53856	53838	50900
rejected %	88%	87%	89%	78%	88%

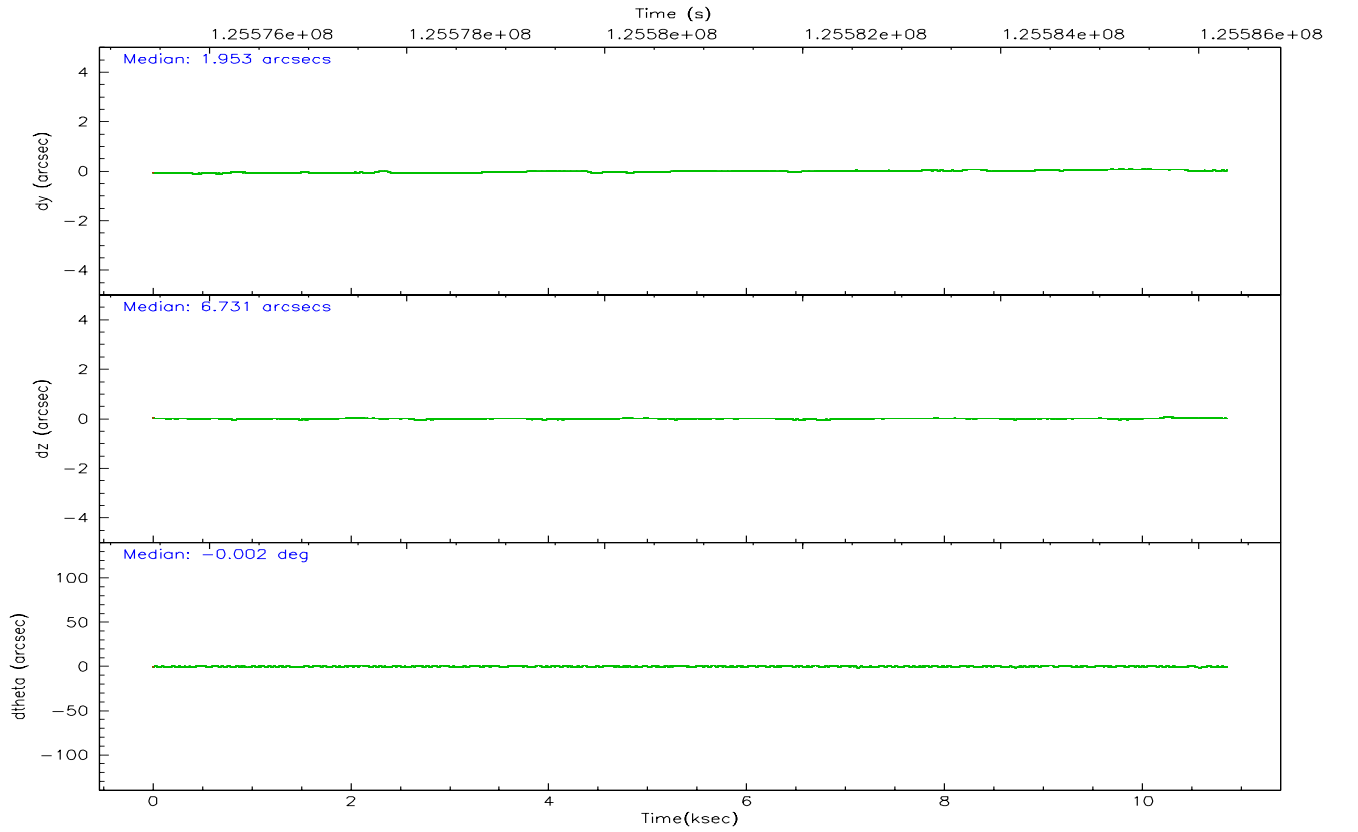
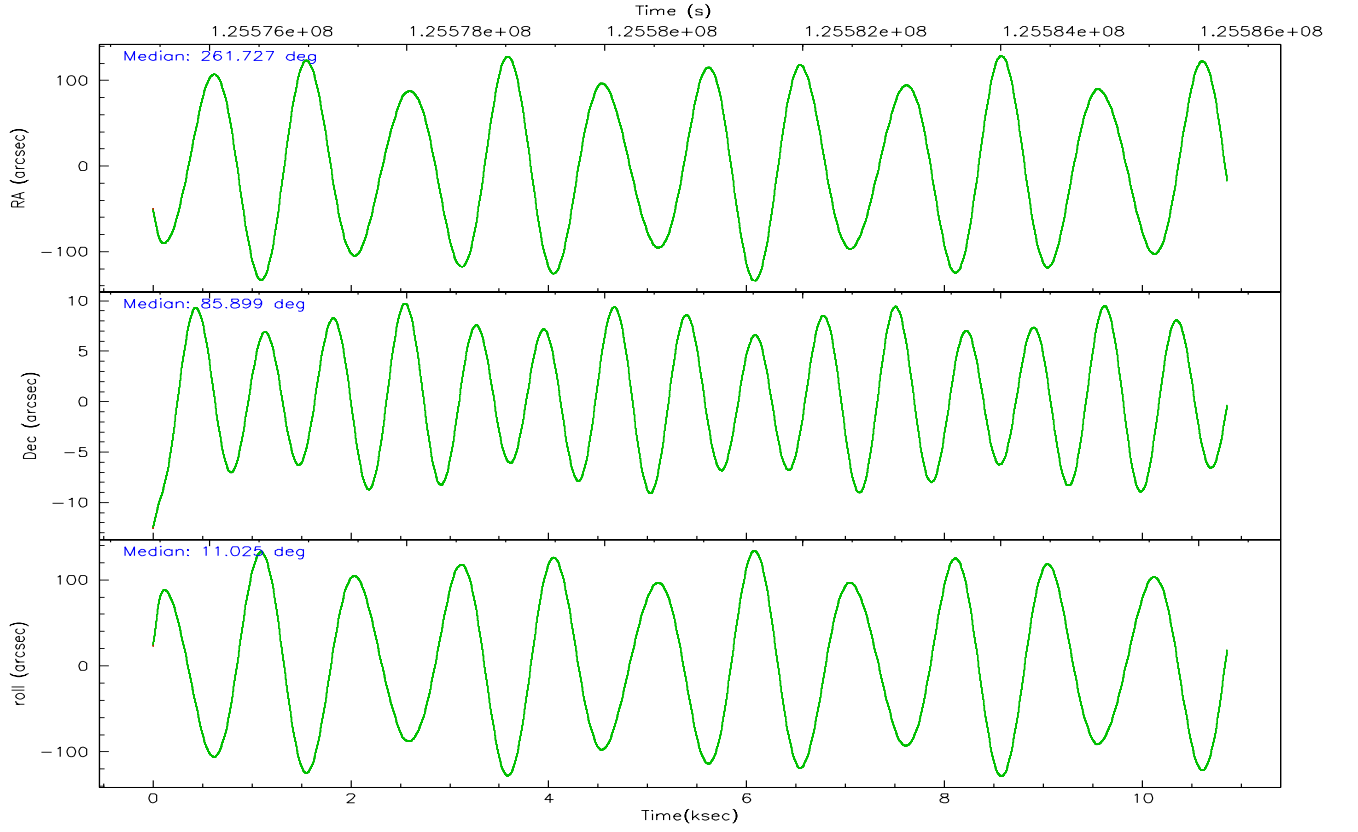
	ccd 0	ccd 1	ccd 2	ccd 3	ccd 6
grade 0 events	2331	2843	2569	9640	2779
	4%	5%	4%	14%	4%
grade 1 events	24	34	28	69	28
	0%	0%	0%	0%	0%
grade 2 events	1242	1225	1275	2021	1251
	2%	2%	2%	2%	2%
grade 3 events	681	738	657	862	642
	1%	1%	1%	1%	1%
grade 4 events	624	636	648	866	670
	1%	1%	1%	1%	1%
grade 5 events	1827	1930	1658	2079	2024
	3%	3%	2%	3%	3%
grade 6 events	1062	1231	1026	1305	1151
	2%	2%	1%	1%	2%
grade 7 events	42878	43724	52163	51672	48845
	84%	83%	86%	75%	85%

2.2 Compared Parameters

Parameter	Planned	Actual	Parameter	Planned	Actual
Instrument	ACIS	ACIS	Obspar format version number	6	6
Detector	ACIS-01236	ACIS-01236	Obspar file type	PREDICTED	ACTUAL
Grating	NONE	NONE	Obspar update status	NONE	UPDATED
Data mode	VFAINT	VFAINT	Number of optional ACIS chips dropped	0	0
Observation mode	POINTING	POINTING	On-chip summing requested	N	N
Pointing RA	261.442008	261.7296825307886	Subarray requested	NONE	NONE
Pointing Dec	85.880626	85.89873377715567	Alternating exposures requested	N	N
Pointing Roll	11.106652	11.02837687235099	Primary exposure time	0.000000	3.1
SIM focus pos (mm)	-0.782348	-0.7809083437167272			
SIM defocus (mm)	0	0.001439871863259334			
SIM translation stage pos (mm)	-225.840463	-225.8433433320239			
SIM translation stage offset (mm)	-7.752	-7.749109670905796			
Observation start time	125576288.184000	125575000.77303			
Observation start date	2001-12-24T10:17:04	2001-12-24T09:56:40			
Observation end time	125586288.184000	125587000.44851			
Observation end date	2001-12-24T13:03:44	2001-12-24T13:16:40			
Read mode	TIMED	TIMED			

2.3 Aspect



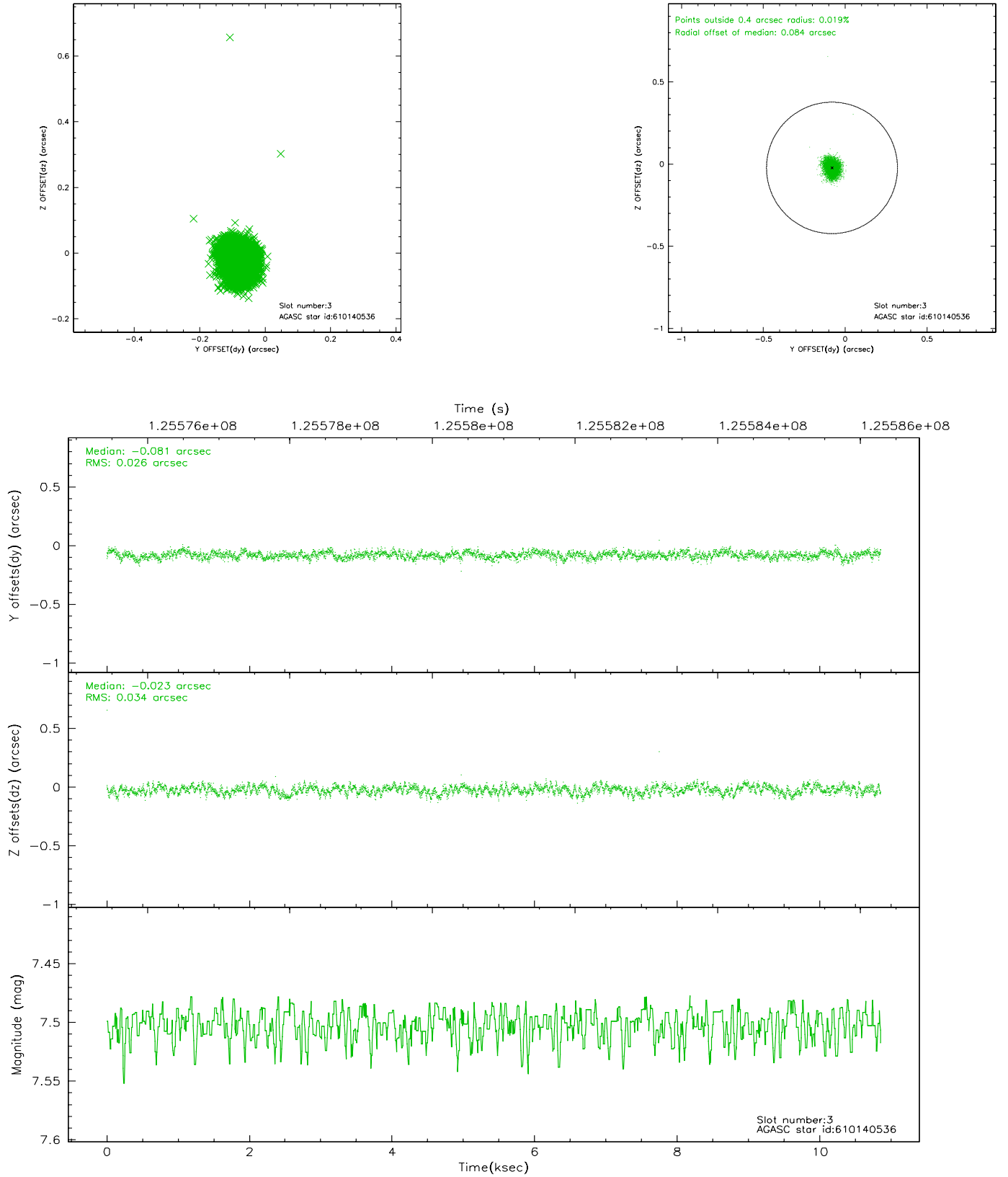


Slot Statistics

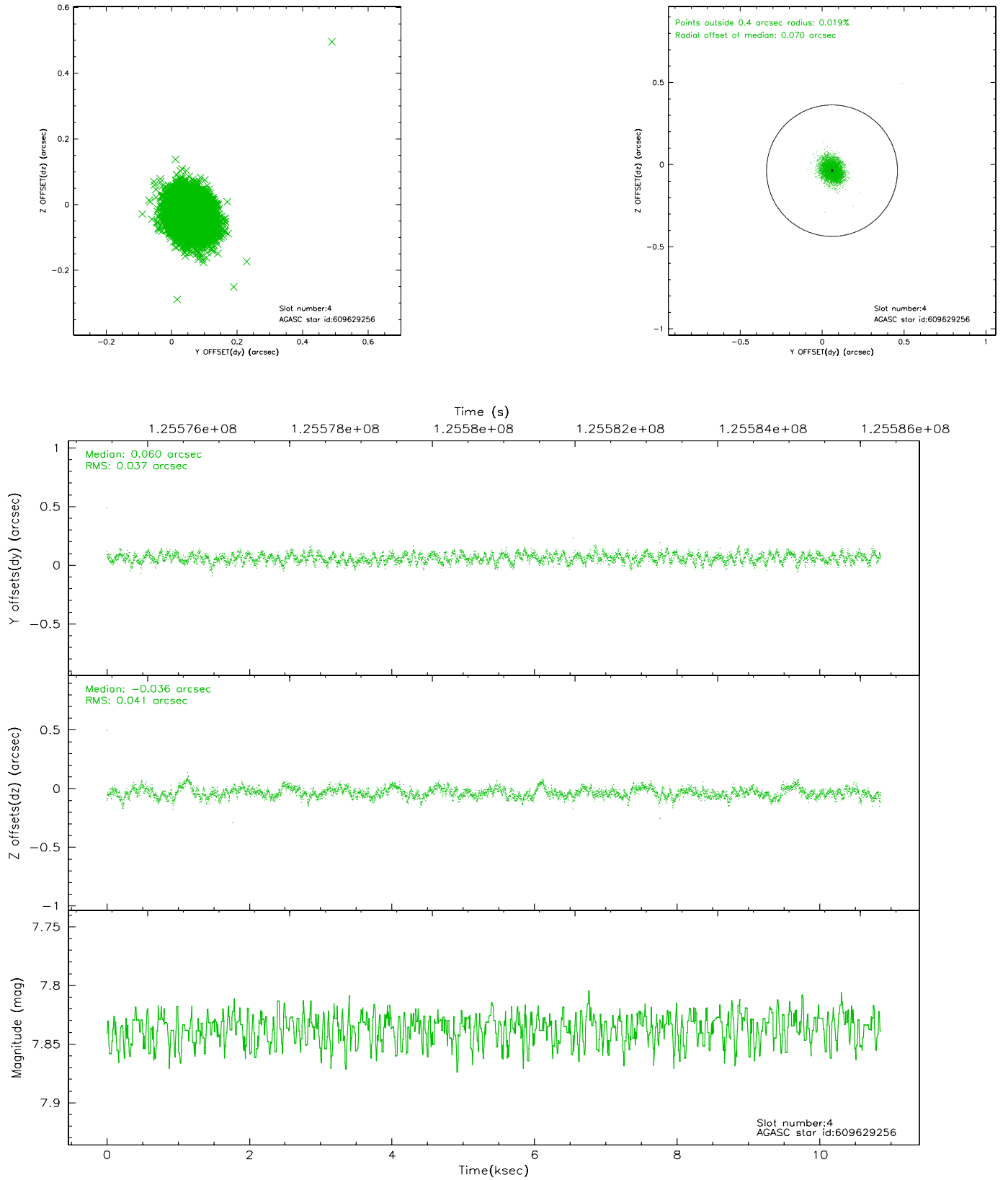
slot	status	id	mag	n_pts	med_dy	med_dz	dr1	dr2	ra	dec	mean_y	mean_z
0	FID	ACIS-I-3	7.42	2648	-0.011	0.220	0.006	0.011	0.000000	0.000000	55.13	-1122.21
1	FID	ACIS-I-5	7.22	2646	-0.089	0.001	0.007	0.011	0.000000	0.000000	-1810.52	907.95
2	FID	ACIS-I-6	7.27	2646	0.008	-0.151	0.006	0.010	0.000000	0.000000	402.78	1552.89
3	GUIDE	610140536	7.50	5293	-0.081	-0.023	0.045	0.071	268.599117	86.558652	2002.96	2192.86
4	GUIDE	609629256	7.84	5294	0.060	-0.036	0.058	0.092	265.708525	85.670109	1000.38	-924.01
5	GUIDE	609615896	8.10	5294	-0.014	-0.025	0.054	0.089	251.317191	86.069850	-2264.62	1362.61
6	GUIDE	609618888	8.94	5295	0.053	0.092	0.059	0.095	253.783495	85.619583	-2213.96	-379.90
7	GUIDE	609628696	9.25	5290	-0.020	-0.012	0.067	0.111	263.115679	85.534122	221.67	-1307.57

2.4 Star Slots

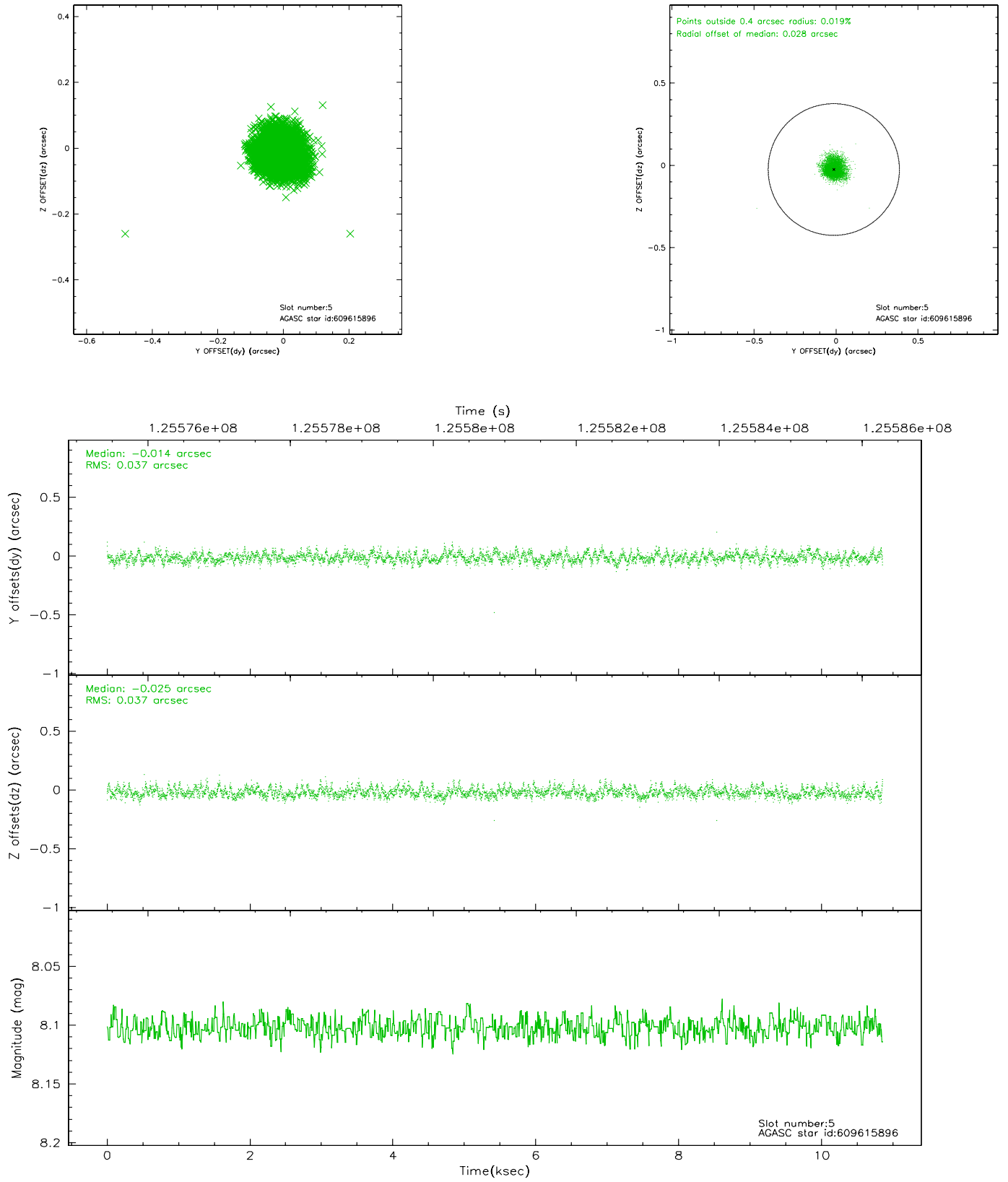
2.4.1 Slot 3



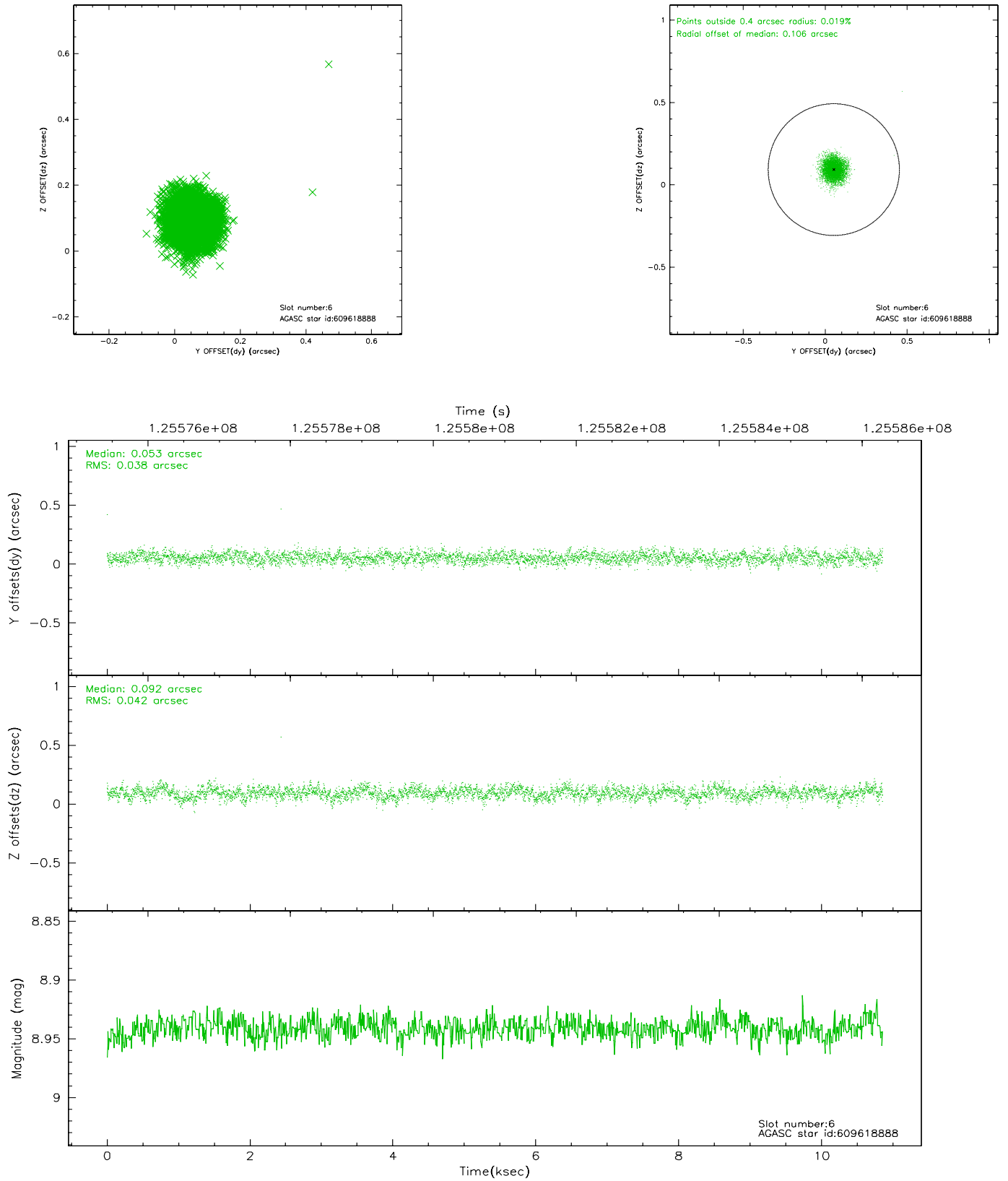
2.4.2 Slot 4



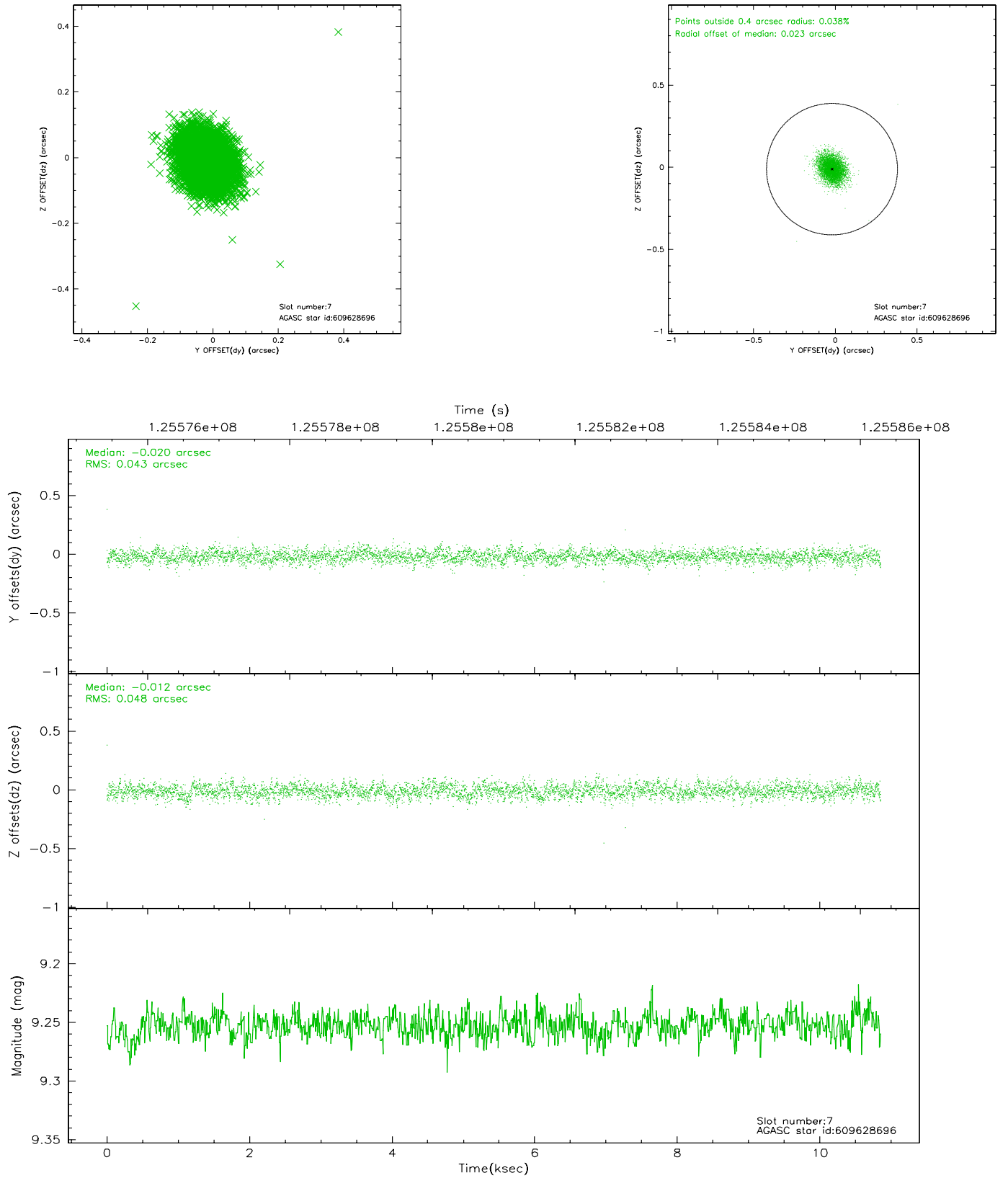
2.4.3 Slot 5



2.4.4 Slot 6

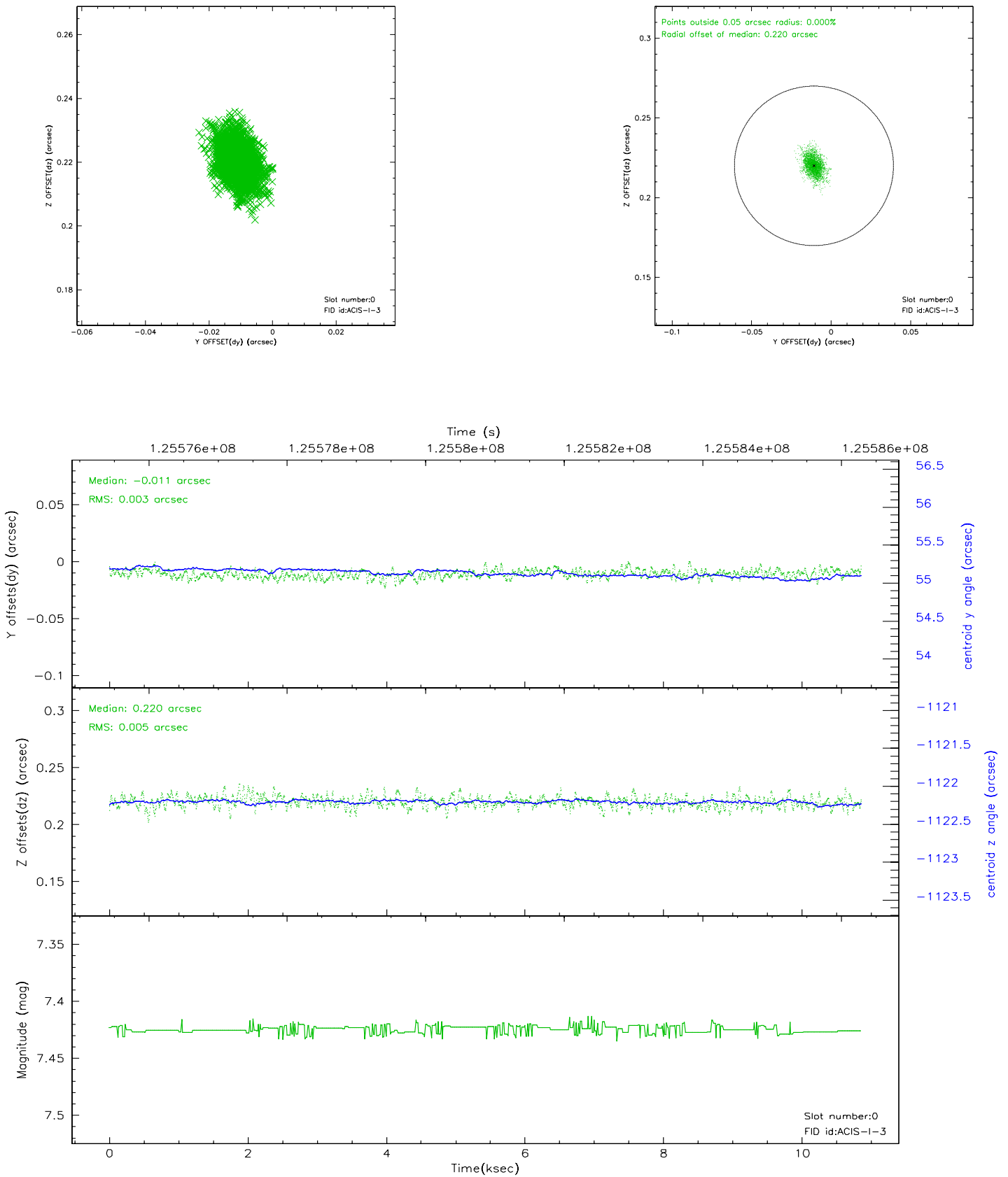


2.4.5 Slot 7

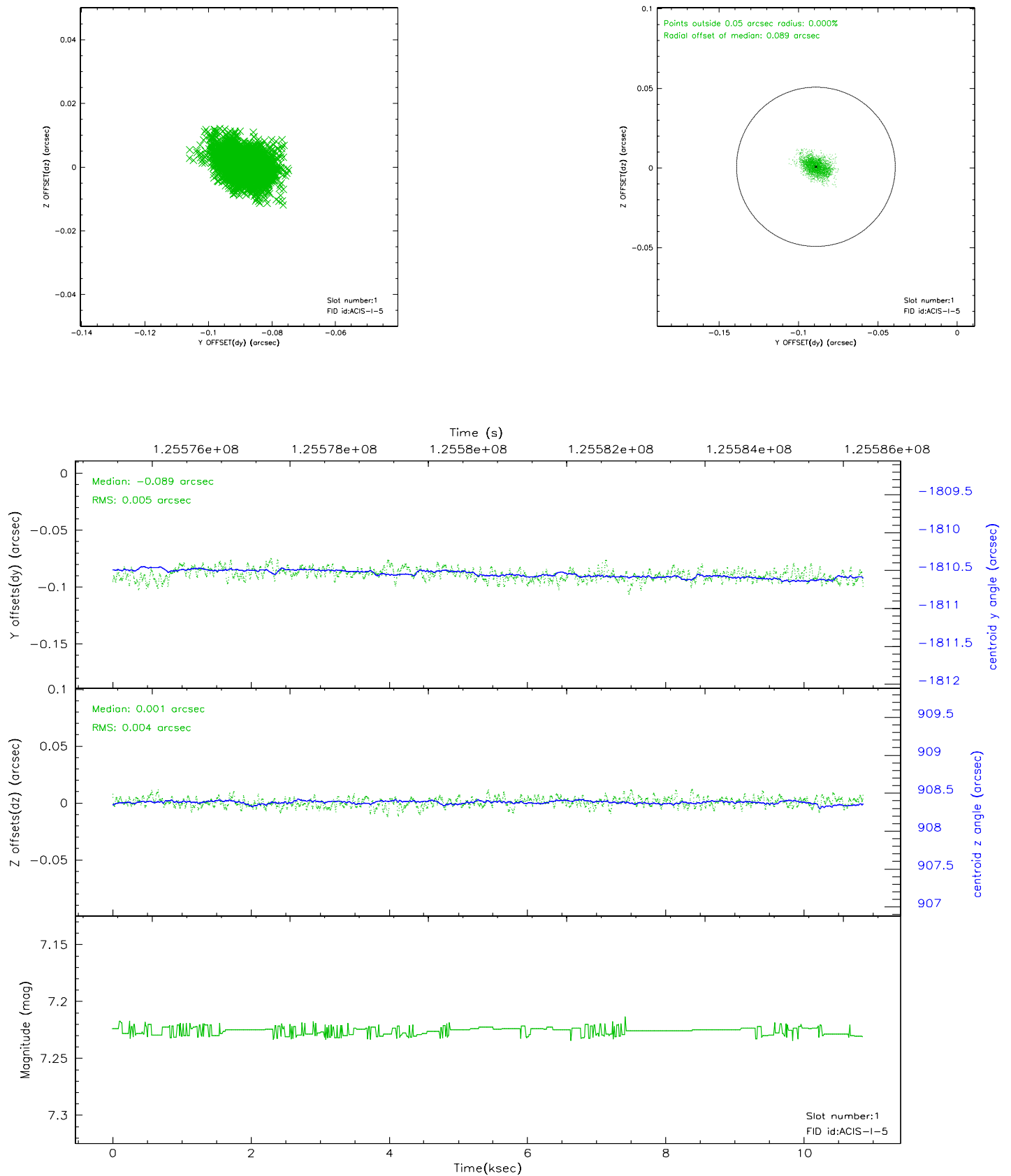


2.5 FID Slots

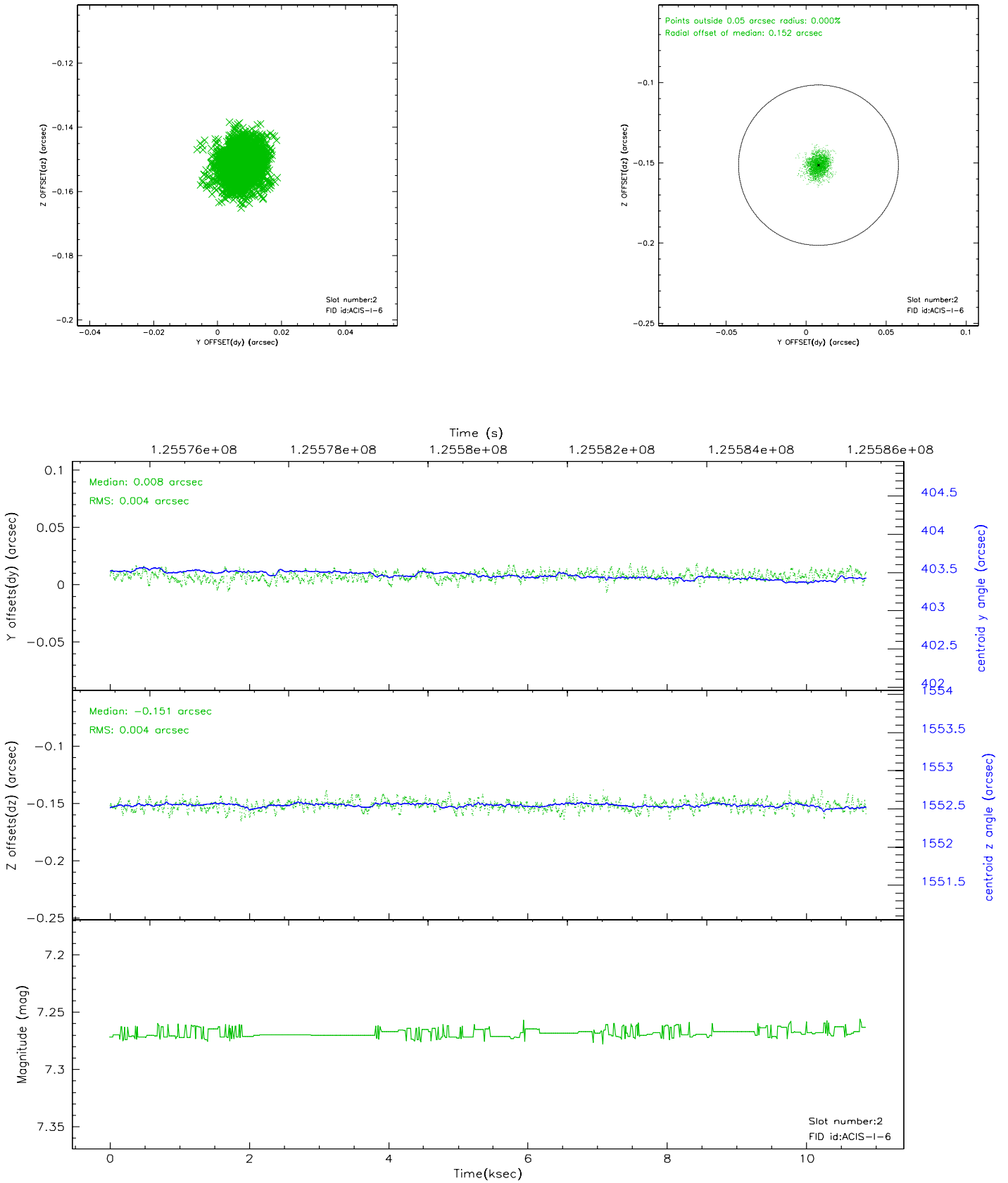
2.5.1 Slot 0



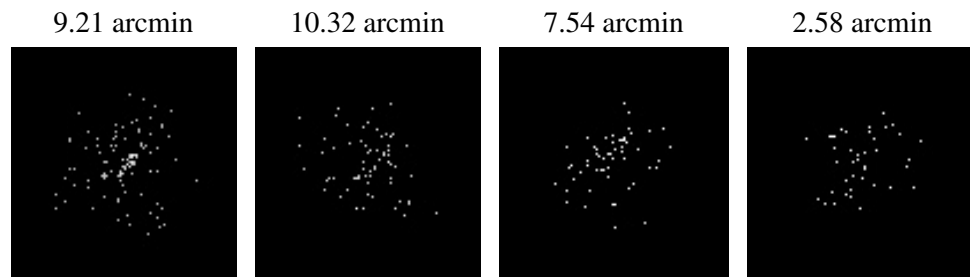
2.5.2 Slot 1



2.5.3 Slot 2



3 Point Sources



A Summary

A.1 Status

V&V Scientist	Jen Lauer
V&V Date (YYYY-MM-DD)	2007.01.17
V&V Edition	1
V&V Disposition and Status	OK
V&V Charge Time	10.121

A.2 Comments