

V&V Reference Report

L2 ASCDS Version : 8.4.5

Observation 3245 - L2 Version 3
Chandra X-Ray Center

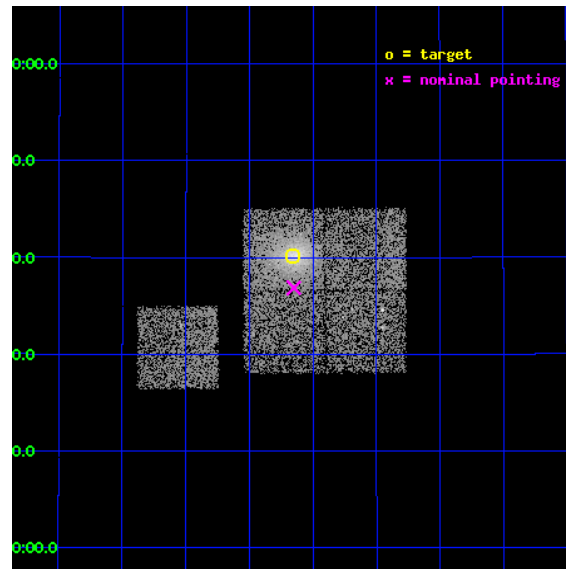
L2 Processing Date : Oct 14 2012

Contents

1	Front	2
2	OBI	3
2.1	OBI	3
2.1.1	Images	3
2.1.2	Bias	3
2.1.3	Parameters	4
2.1.4	Events	4
2.2	Compared Parameters	5
2.3	Aspect	6
2.4	Star Slots	9
2.4.1	Slot 3	9
2.4.2	Slot 4	10
2.4.3	Slot 5	11
2.4.4	Slot 6	12
2.4.5	Slot 7	13
2.5	FID Slots	14
2.5.1	Slot 0	14
2.5.2	Slot 1	15
2.5.3	Slot 2	16
A	Summary	17
A.1	Status	17
A.2	Comments	17

1 Front

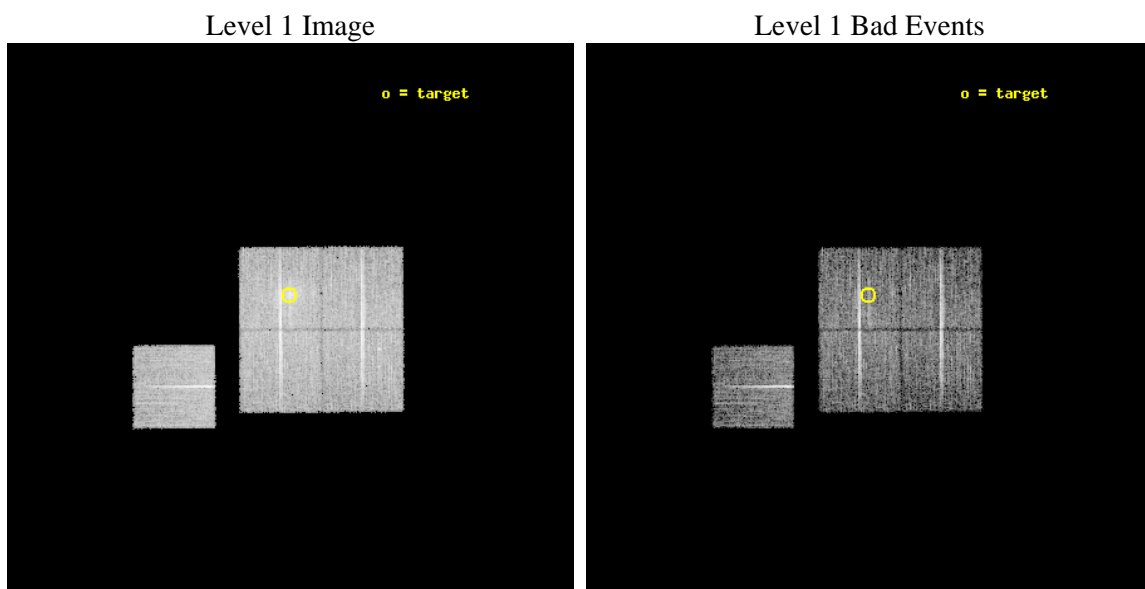
seq_num	800245	Sequence number
obs_id	3245	Observation id
title	OBSERVATION OF BCS CLUSTERS, SECOND SET	Proposal title
observer	DR. LEON VANSPEYBROECK	Principal investigator
object	A2259	Source name
dtcycle	0	
cycle	P	events from which exps? Prim/Second/Both
ra_targ	260.04	Observer's specified target RA [deg]
dec_targ	27.668889	Observer's specified target Dec [deg]
ra_nom	260.0374350627	Nominal RA [deg]
dec_nom	27.614589158772	Nominal Dec [deg]
roll_nom	269.74612058297	Nominal Roll [deg]
revision	3	Processing version of data
ontime	10117.496773064	Sum of GTIs [s]
livetime	9985.3042293313	Livetime [s]
ontime0	10117.373653054	Sum of GTIs [s]
ontime1	10114.273732841	Sum of GTIs [s]
ontime2	10117.455733061	Sum of GTIs [s]
ontime3	10117.496773064	Sum of GTIs [s]
ontime6	10117.332613051	Sum of GTIs [s]
l2events	30700	Number of level 2 events



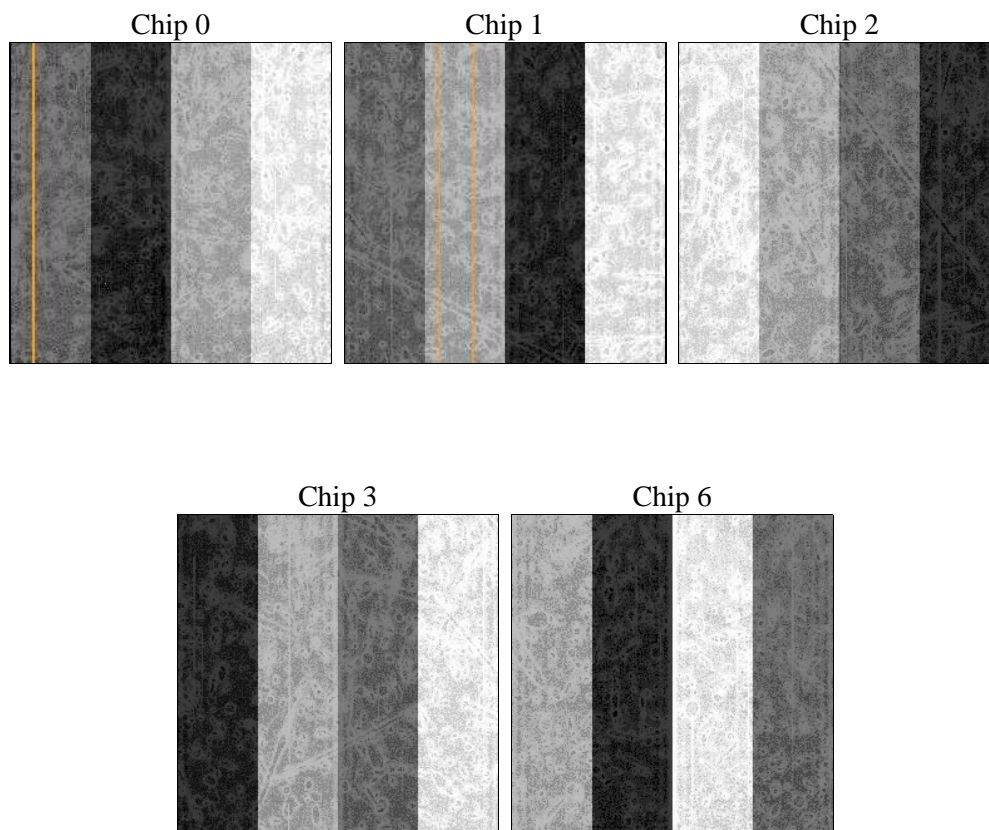
2 OBI

2.1 OBI

2.1.1 Images



2.1.2 Bias



2.1.3 Parameters

obi_num	1	Obi number	sched_exp_time	10000.000000	[s] Scheduled observation exposure time
ascdsver	8.4.5	Processing system revision	ontime	10117.496773064	Sum of GTIs [s]
caldsver	4.5.2	 	ontime0	10117.373653054	Sum of GTIs [s]
date	2012-10-14T18:10:17	Date and time of file creation	ontime1	10114.273732841	Sum of GTIs [s]
revision	3	Processing version of data	ontime2	10117.455733061	Sum of GTIs [s]
			ontime3	10117.496773064	Sum of GTIs [s]
			ontime6	10117.332613051	Sum of GTIs [s]
			l1events	279744	Number of level 1 events

2.1.4 Events

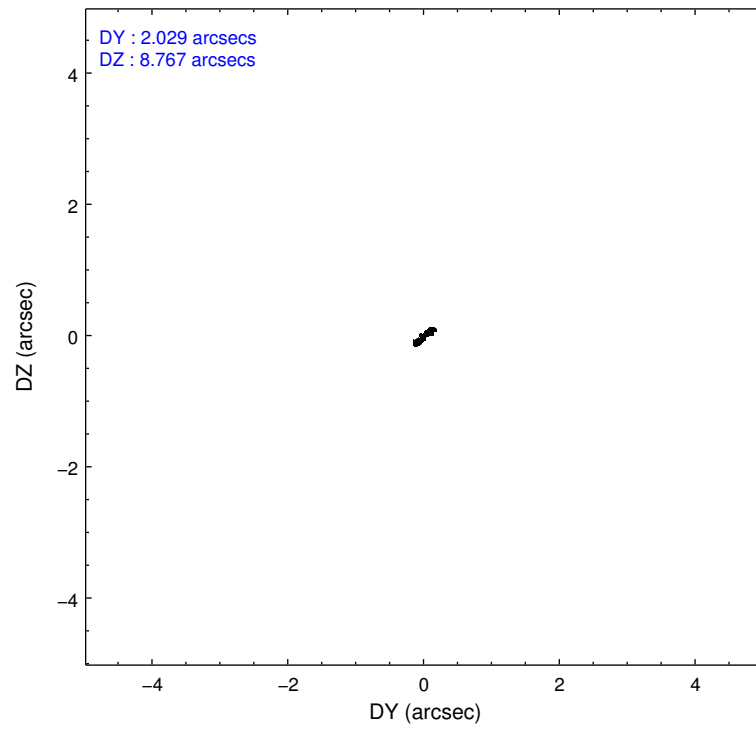
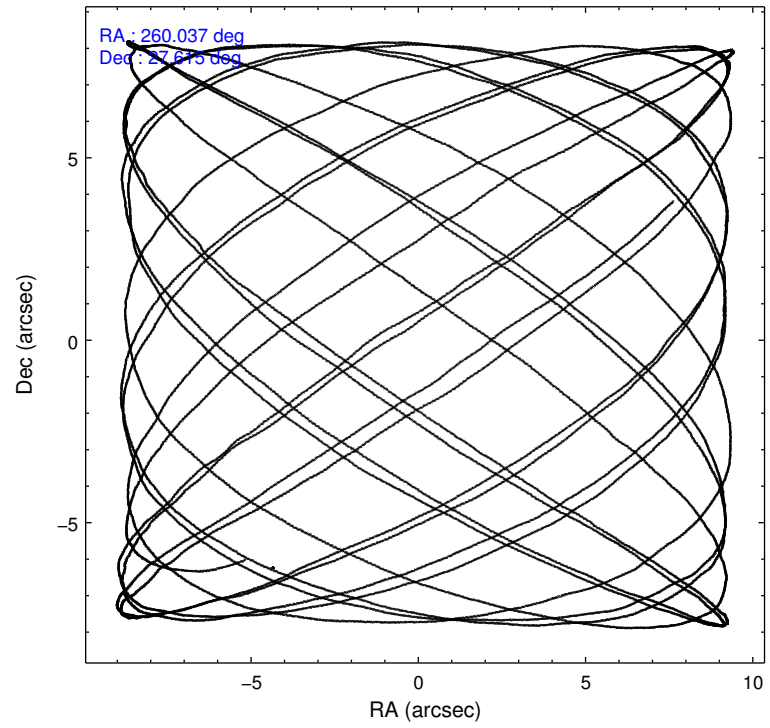
	ccd 0	ccd 1	ccd 2	ccd 3	ccd 6
level 1 events	49912	52750	55896	65700	55486
rejected events	44259	46627	50597	52396	50187
rejected %	88%	88%	90%	79%	90%

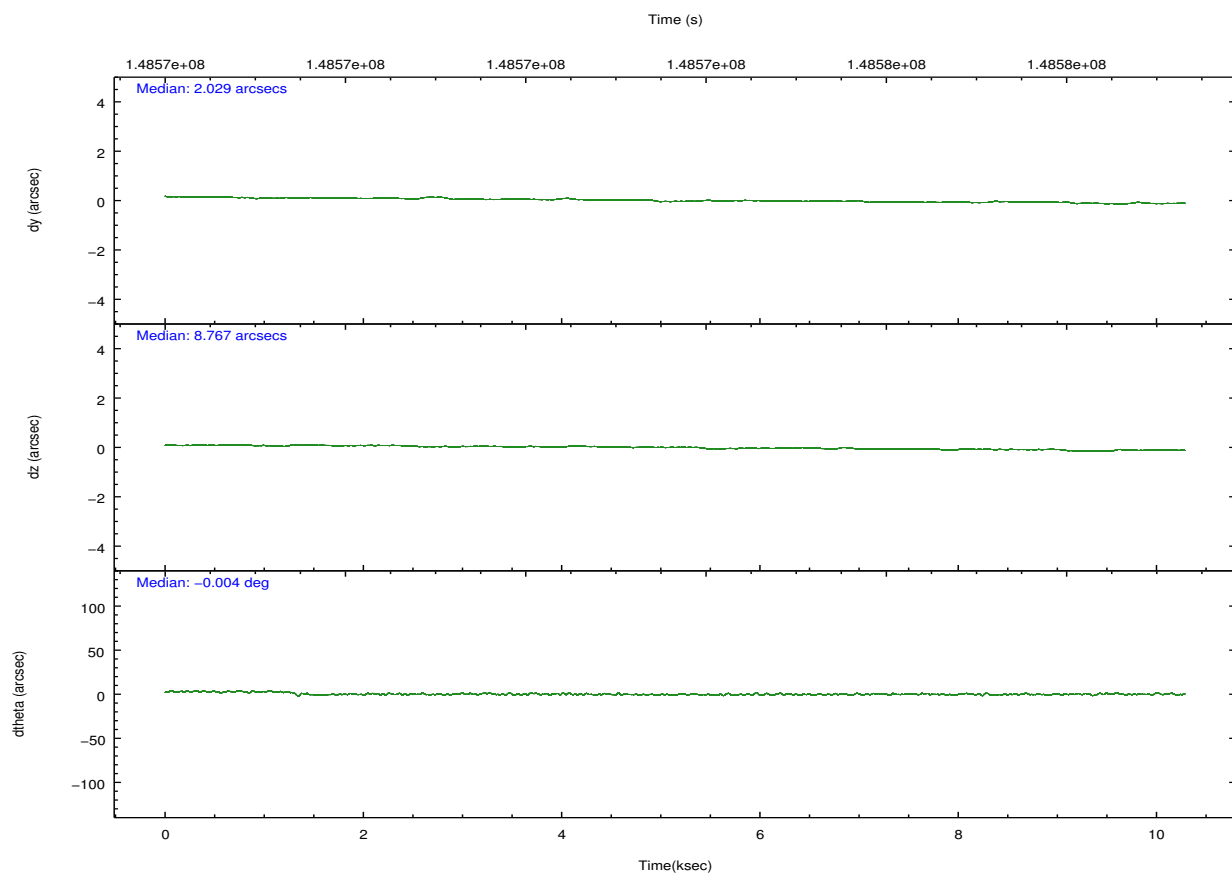
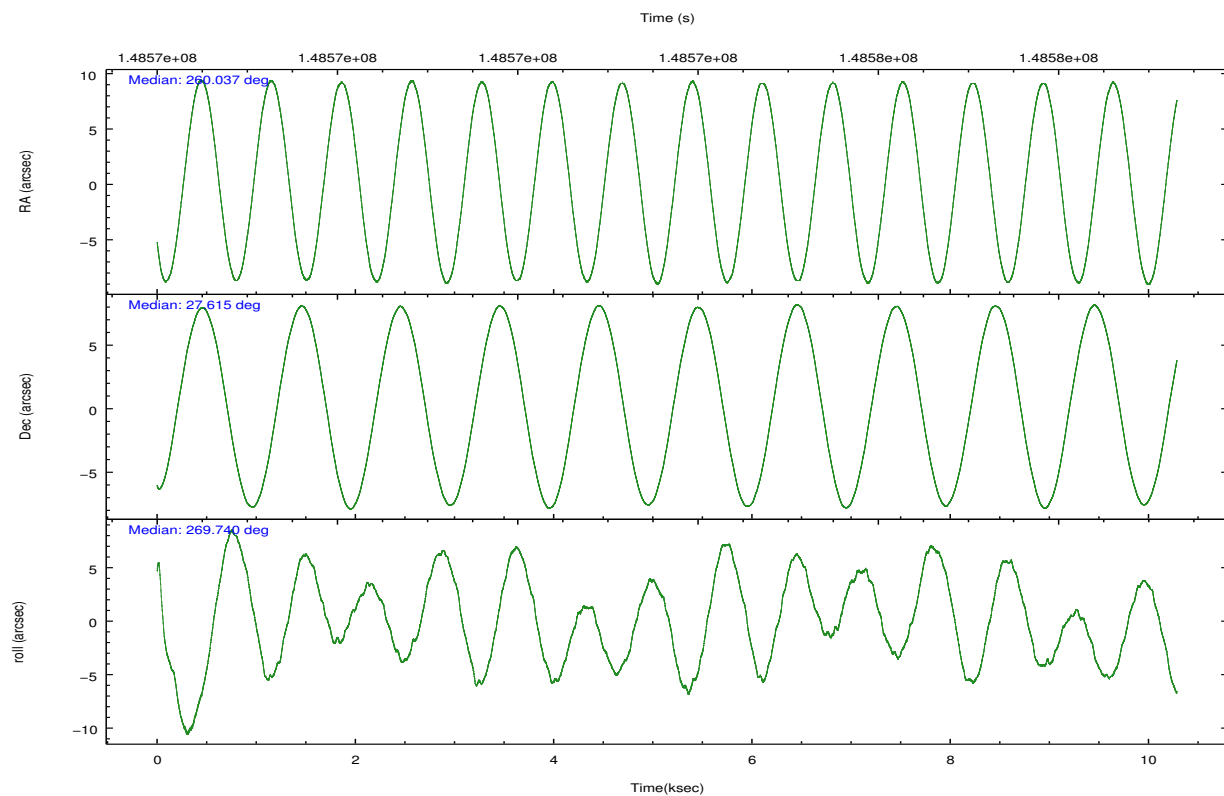
	ccd 0	ccd 1	ccd 2	ccd 3	ccd 6
grade 0 events	2184	2261	1978	8665	1793
	4%	4%	3%	13%	3%
grade 1 events	27	21	24	51	20
	0%	0%	0%	0%	0%
grade 2 events	1257	1296	1236	1893	1152
	2%	2%	2%	2%	2%
grade 3 events	669	696	604	834	628
	1%	1%	1%	1%	1%
grade 4 events	577	696	595	789	605
	1%	1%	1%	1%	1%
grade 5 events	1804	1876	1759	2059	2159
	3%	3%	3%	3%	3%
grade 6 events	970	1177	889	1141	1128
	1%	2%	1%	1%	2%
grade 7 events	42424	44727	48811	50268	48001
	84%	84%	87%	76%	86%

2.2 Compared Parameters

Parameter	Planned	Actual	Parameter	Planned	Actual
Instrument	ACIS	ACIS	Obspar format version number	7	7
Detector	ACIS-01236	ACIS-01236	Obspar file type	PREDICTED	ACTUAL
Grating	NONE	NONE	Obspar update status	NONE	UPDATED
Data mode	VFAINT	VFAINT	Number of optional ACIS chips dropped	0	0
Observation mode	POINTING	POINTING	On-chip summing requested	N	N
[deg] Pointing RA	260.022036	260.0374350627002	Subarray requested	NONE	NONE
[deg] Pointing Dec	27.638348	27.61458915877173	Alternating exposures requested	N	N
[deg] Pointing Roll	269.544566	269.746120582975	[s] Primary exposure time	0.000000	3.1
[mm] SIM focus pos	-0.782348	-0.7809083437167272			
[mm] SIM defocus	0	0.001439871863259334			
[mm] SIM translation stage pos	-225.840463	-225.8433433320239			
[mm] SIM translation stage offset	-7.752	-7.749109670905796			
[s] Observation start time (MET)	148568800.184000	148567787.35978			
Observation start date	2002-09-16T13:05:36	2002-09-16T12:49:47			
[s] Observation end time (MET)	148578800.184000	148579507.72276			
Observation end date	2002-09-16T15:52:16	2002-09-16T16:05:07			
Read mode	TIMED	TIMED			

2.3 Aspect



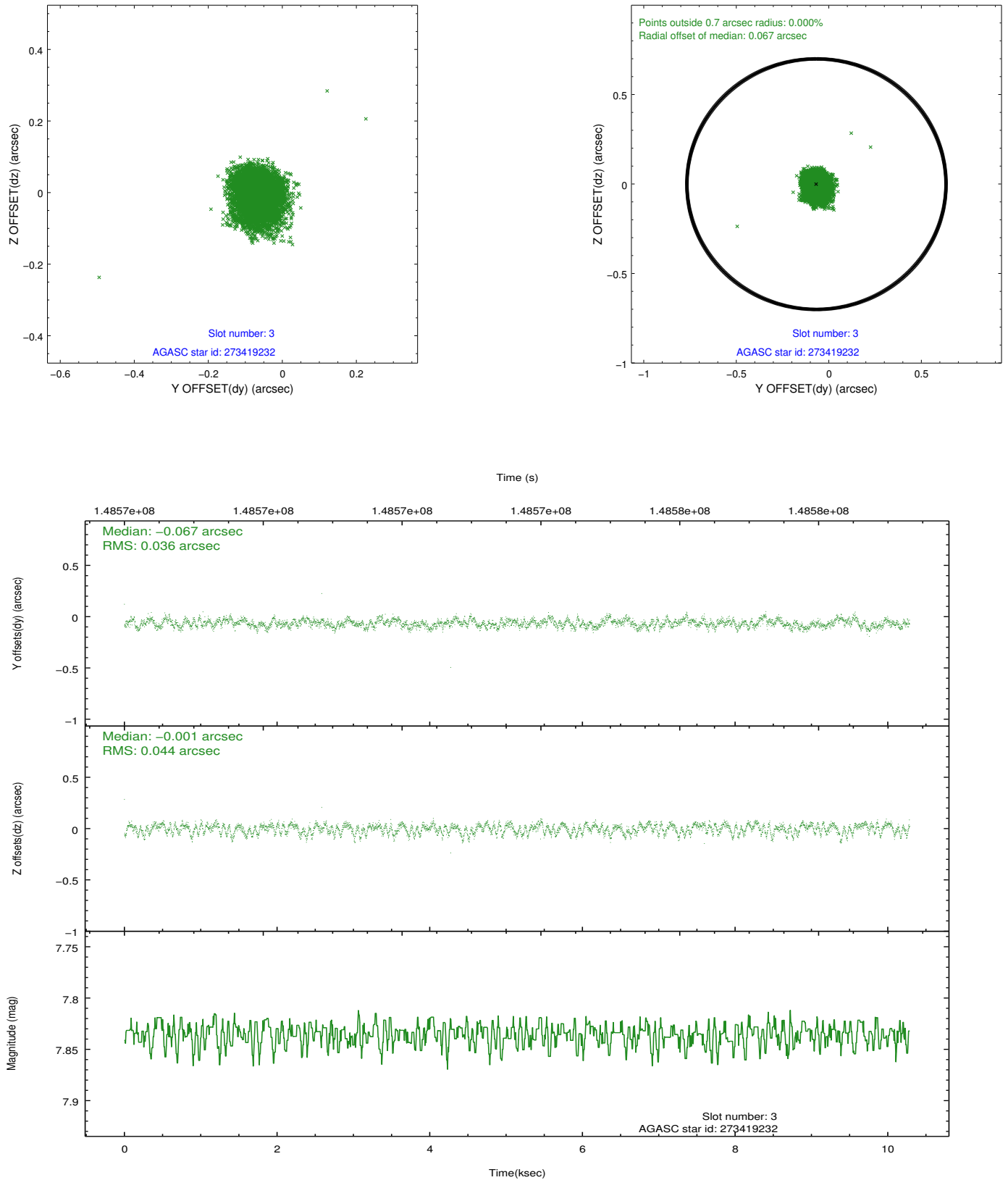


Slot Statistics

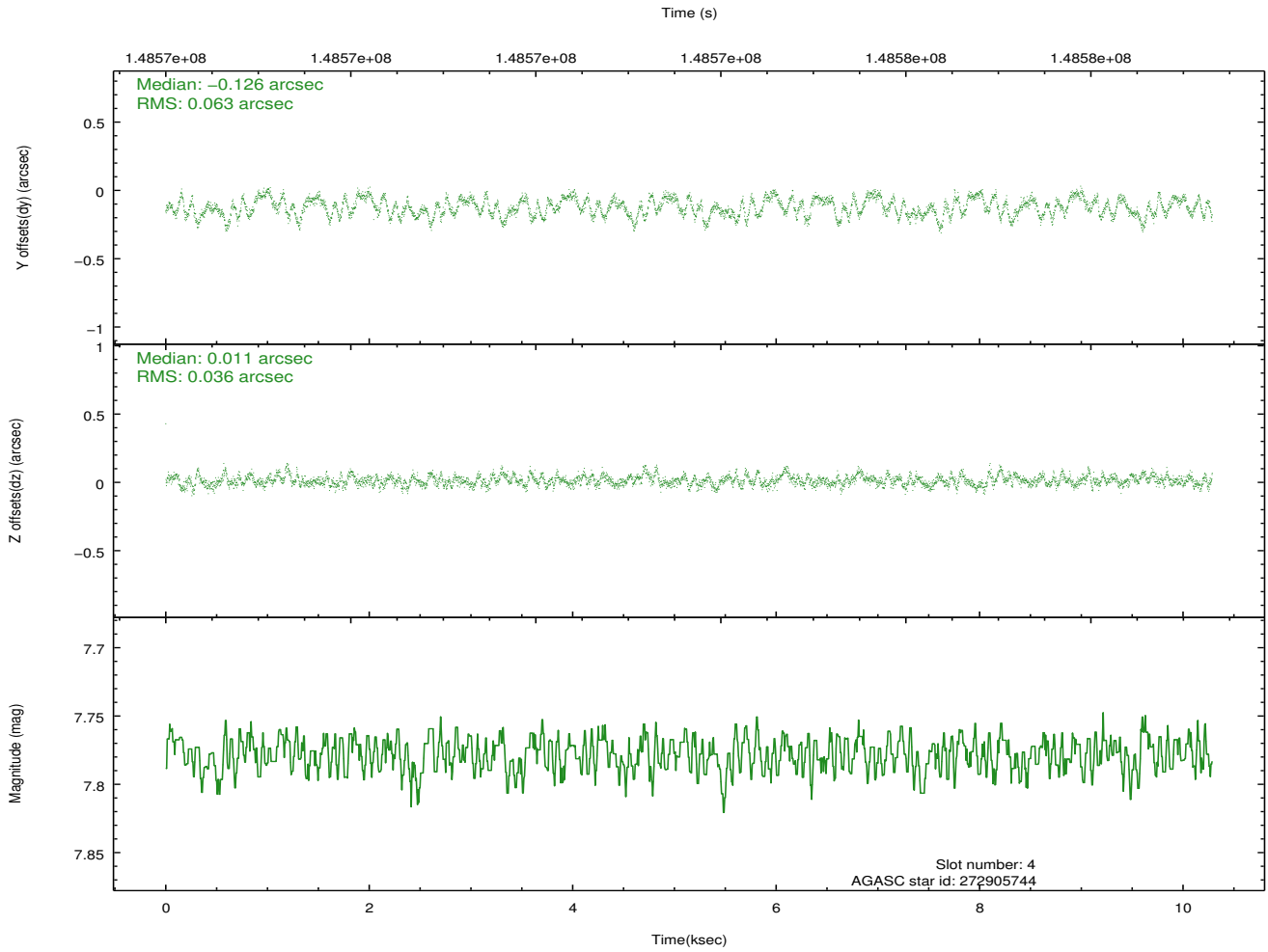
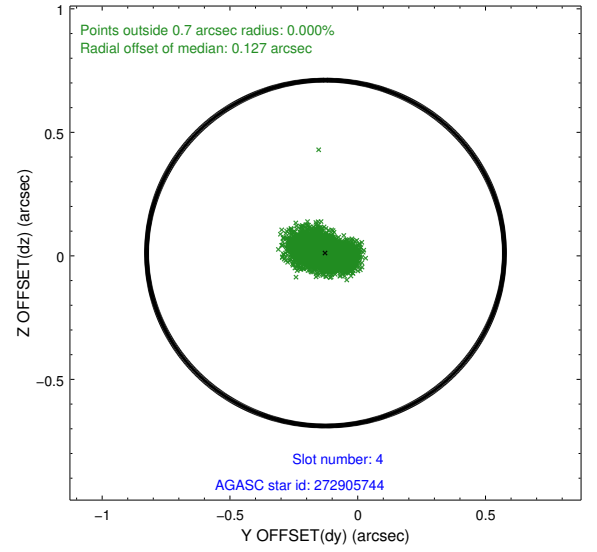
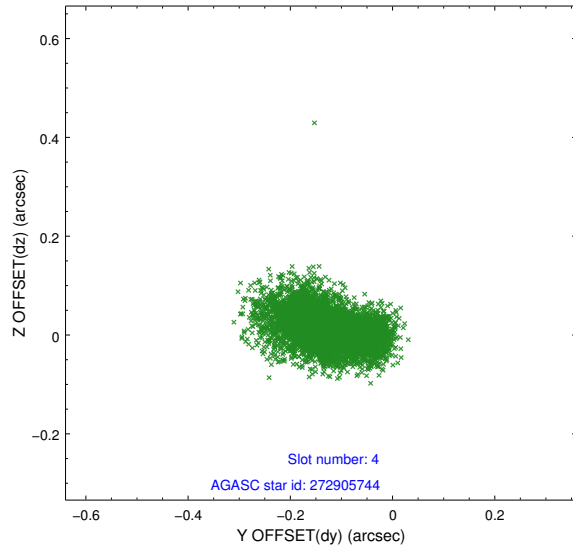
slot	status	id	mag	n_pts	med_dy	med_dz	dr1	dr2	ra	dec	mean_y	mean_z
0	FID	ACIS-I-2	7.17	2509	-0.083	-0.035	0.009	0.015	0.000000	0.000000	-757.00	-996.67
1	FID	ACIS-I-4	7.17	2509	0.002	0.061	0.007	0.019	0.000000	0.000000	2156.83	909.31
2	FID	ACIS-I-5	7.22	2509	-0.020	0.043	0.011	0.026	0.000000	0.000000	-1809.75	906.63
3	GUIDE	273419232	7.83	5019	-0.067	-0.001	0.060	0.094	259.649336	28.251345	-2198.68	-1198.78
4	GUIDE	272905744	7.78	5018	-0.126	0.011	0.078	0.123	260.699990	27.859357	-819.23	2151.81
5	GUIDE	272898872	9.01	5018	0.292	0.071	0.073	0.120	260.157490	27.527501	395.83	437.08
6	GUIDE	271189488	9.38	5016	-0.075	-0.067	0.092	0.155	259.387780	28.096100	-1636.47	-2026.60
7	GUIDE	271192608	9.62	5018	-0.026	-0.019	0.129	0.210	259.258197	27.917186	-991.66	-2437.32

2.4 Star Slots

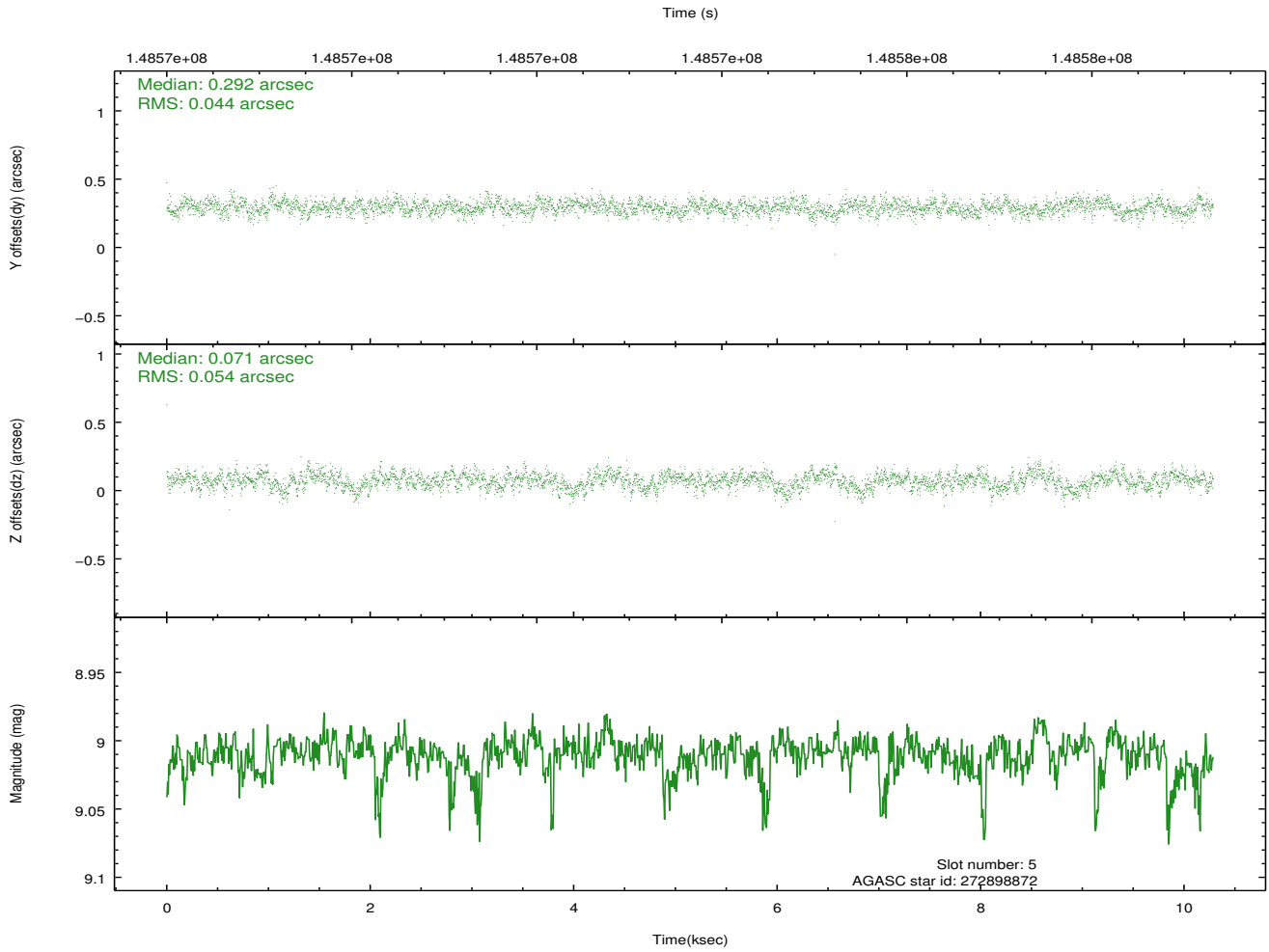
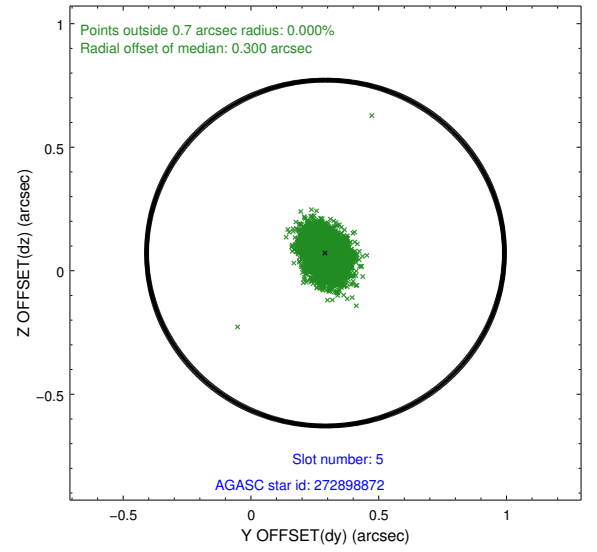
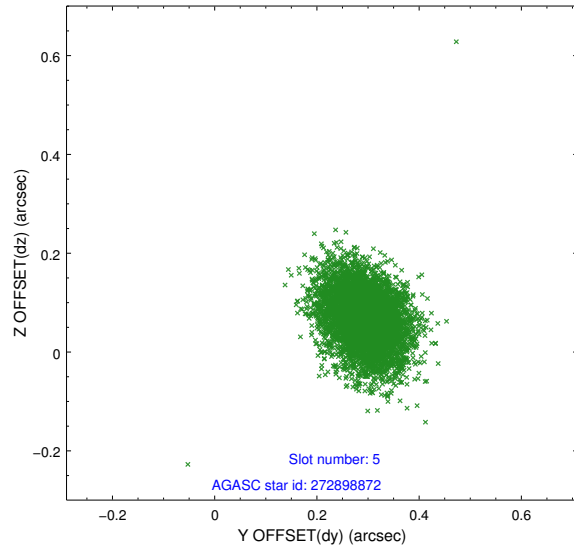
2.4.1 Slot 3



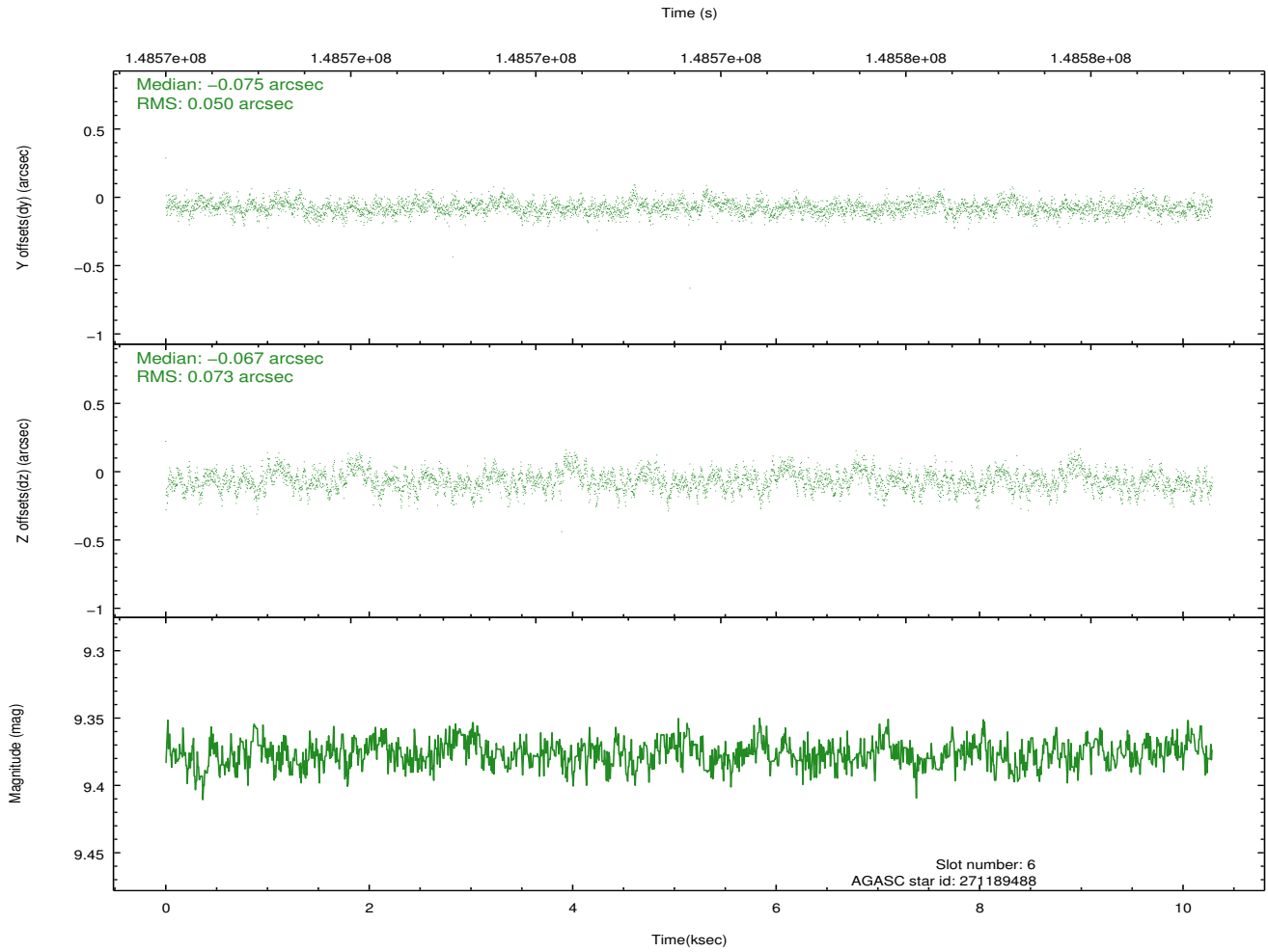
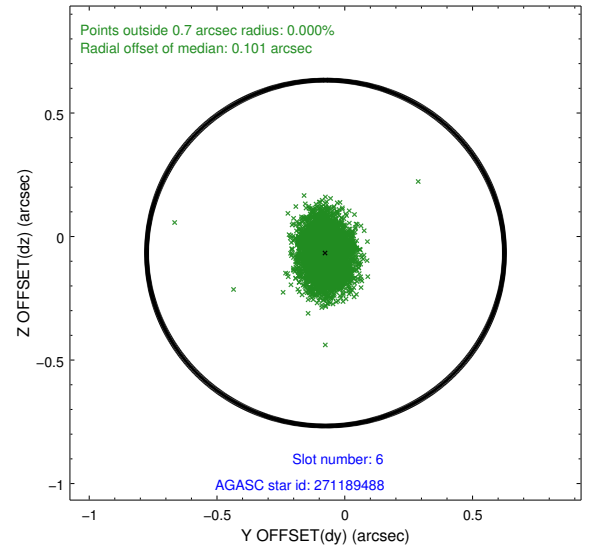
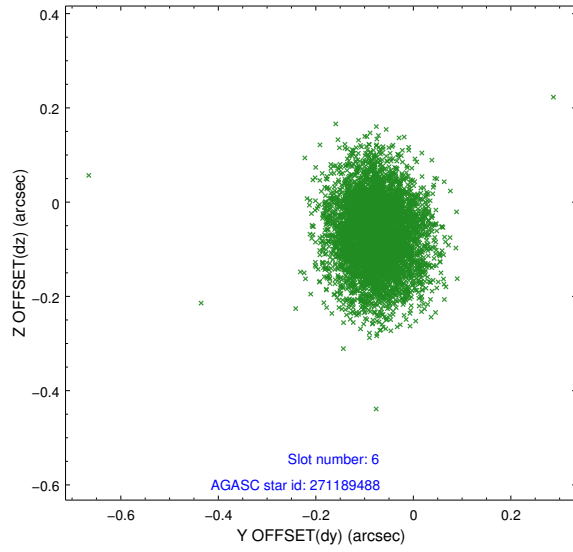
2.4.2 Slot 4



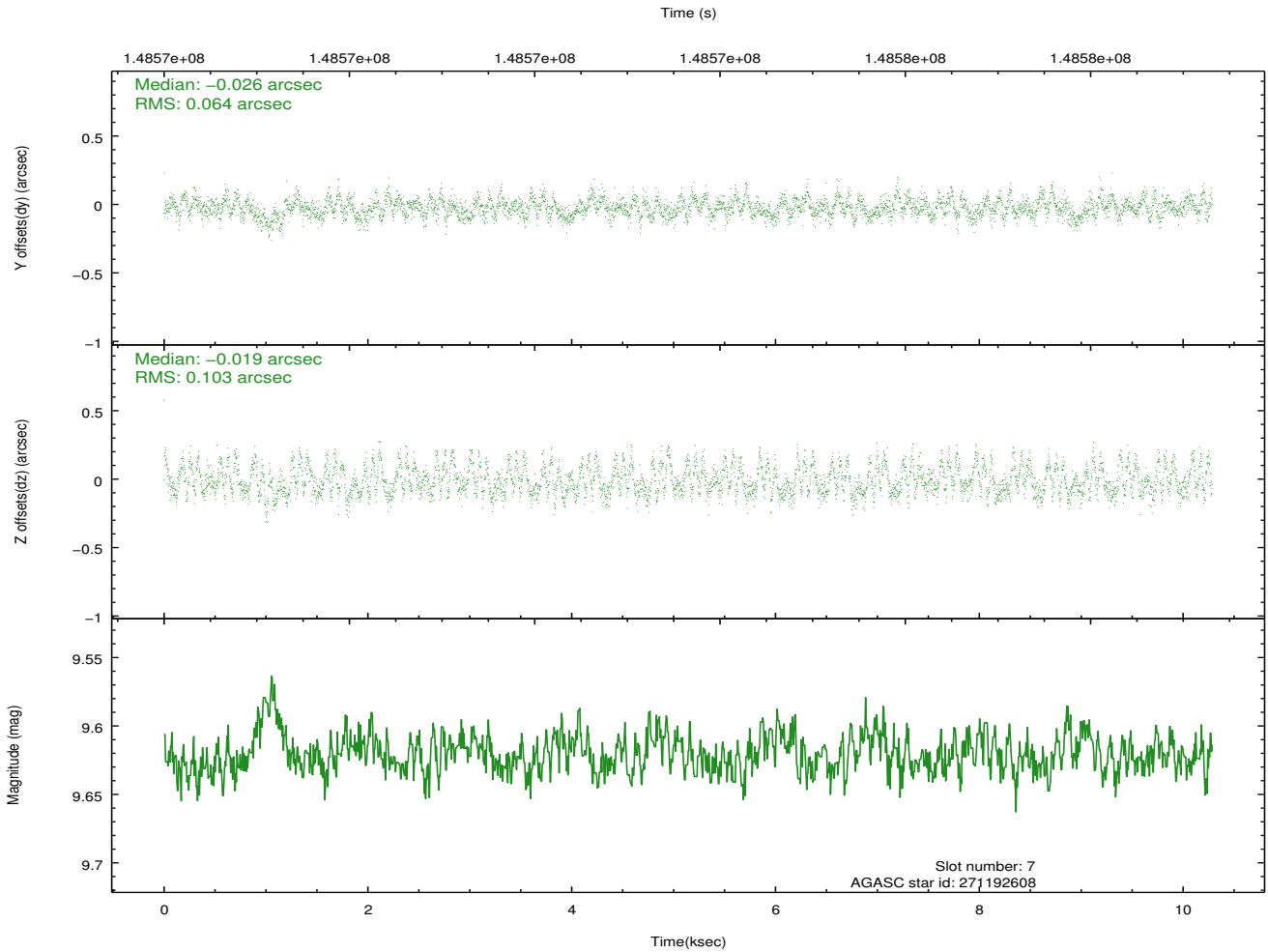
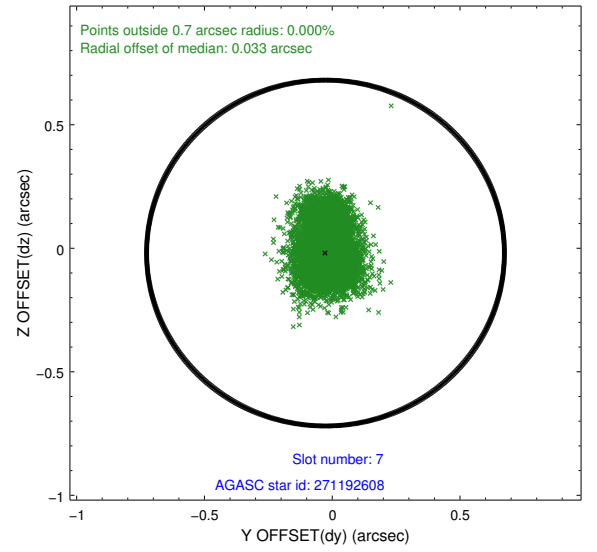
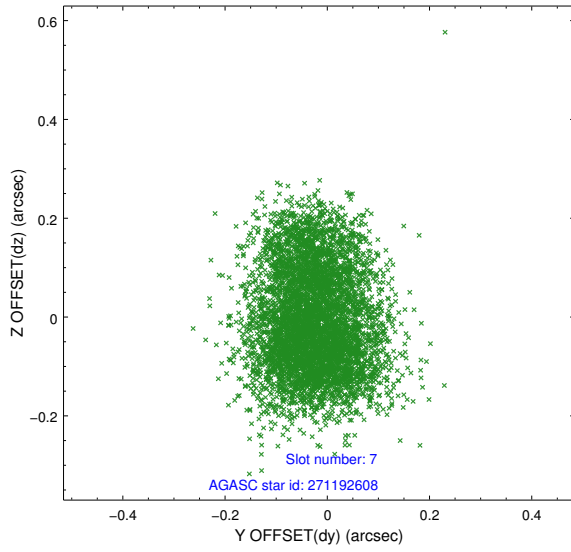
2.4.3 Slot 5



2.4.4 Slot 6

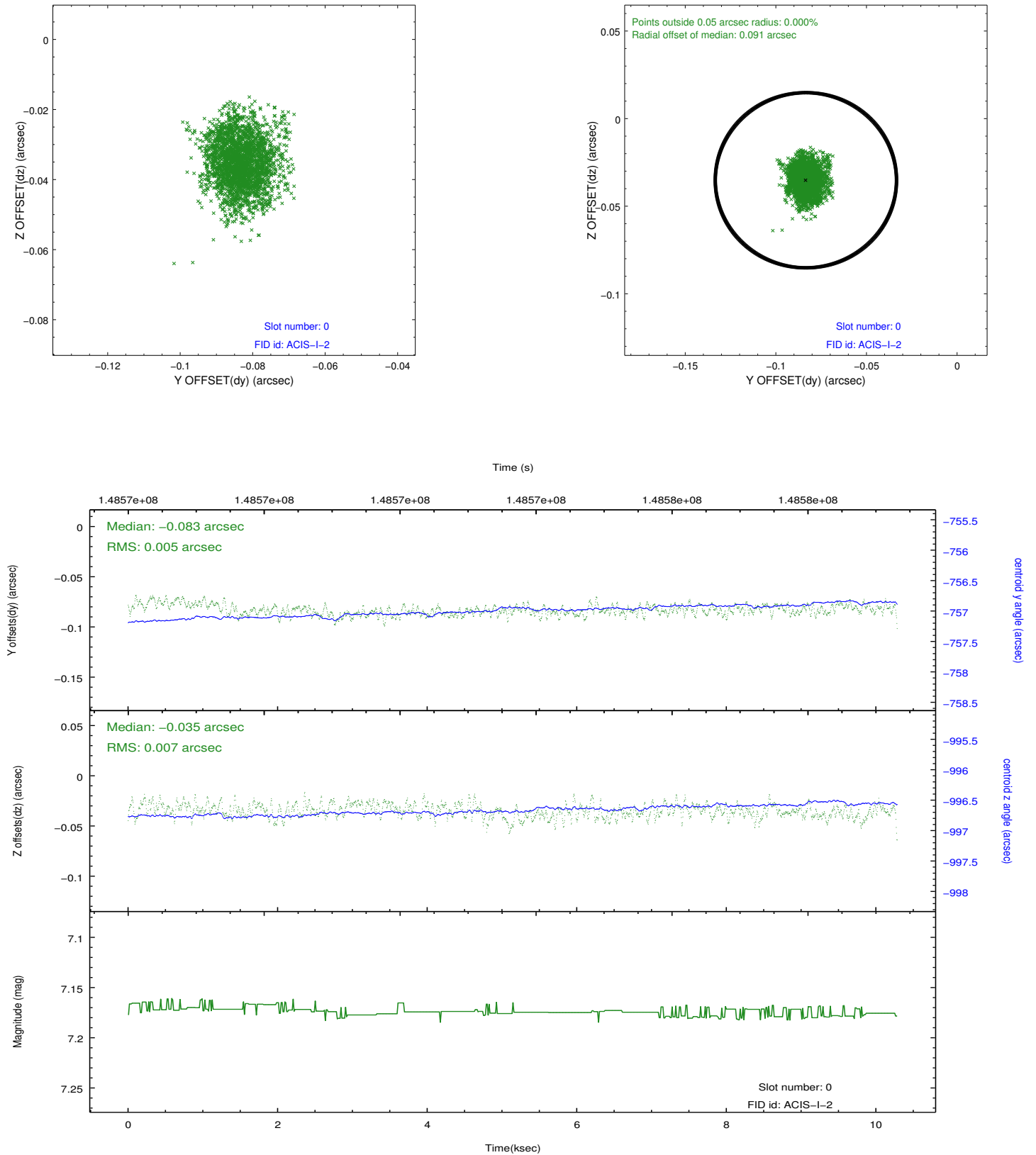


2.4.5 Slot 7

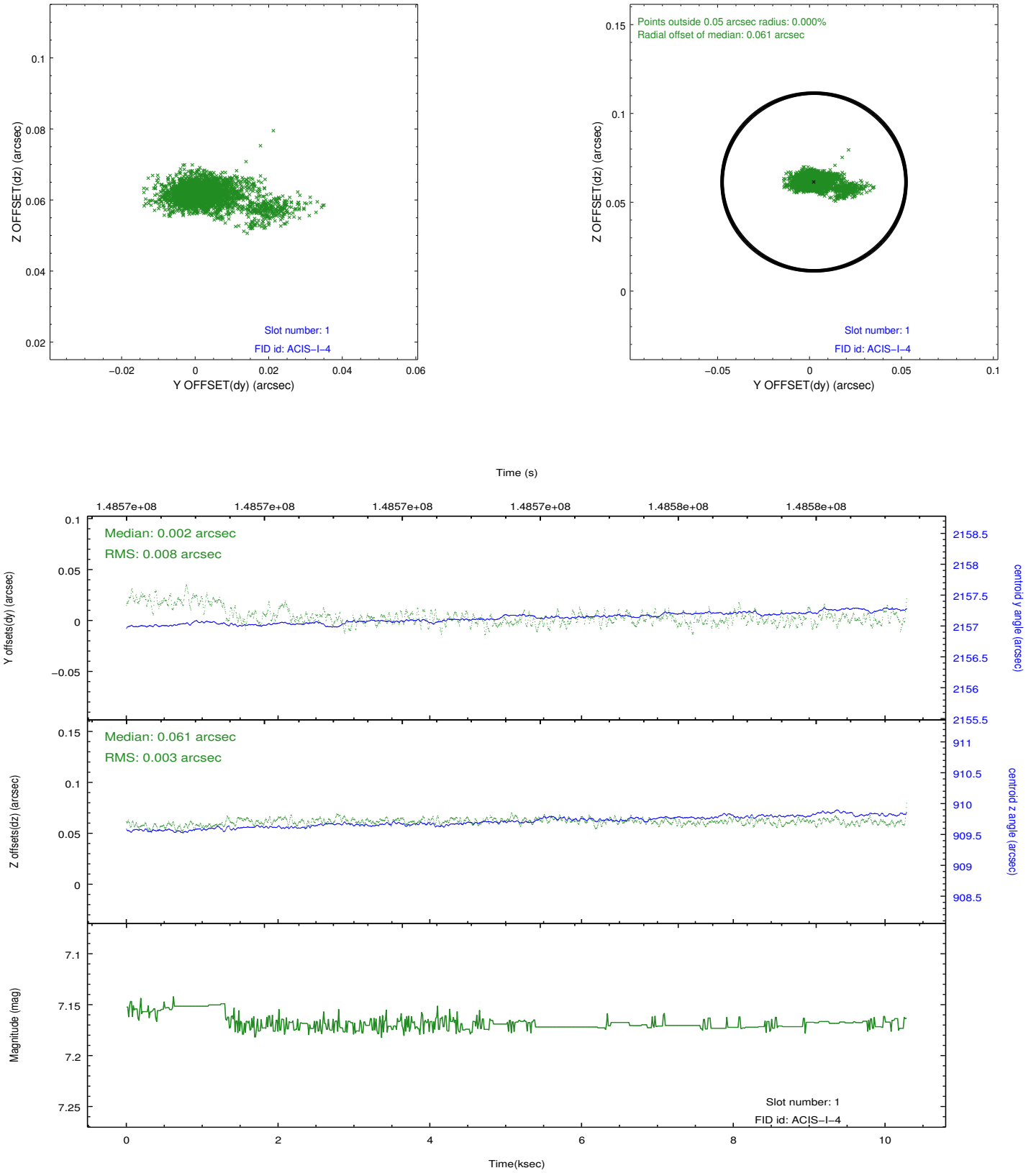


2.5 FID Slots

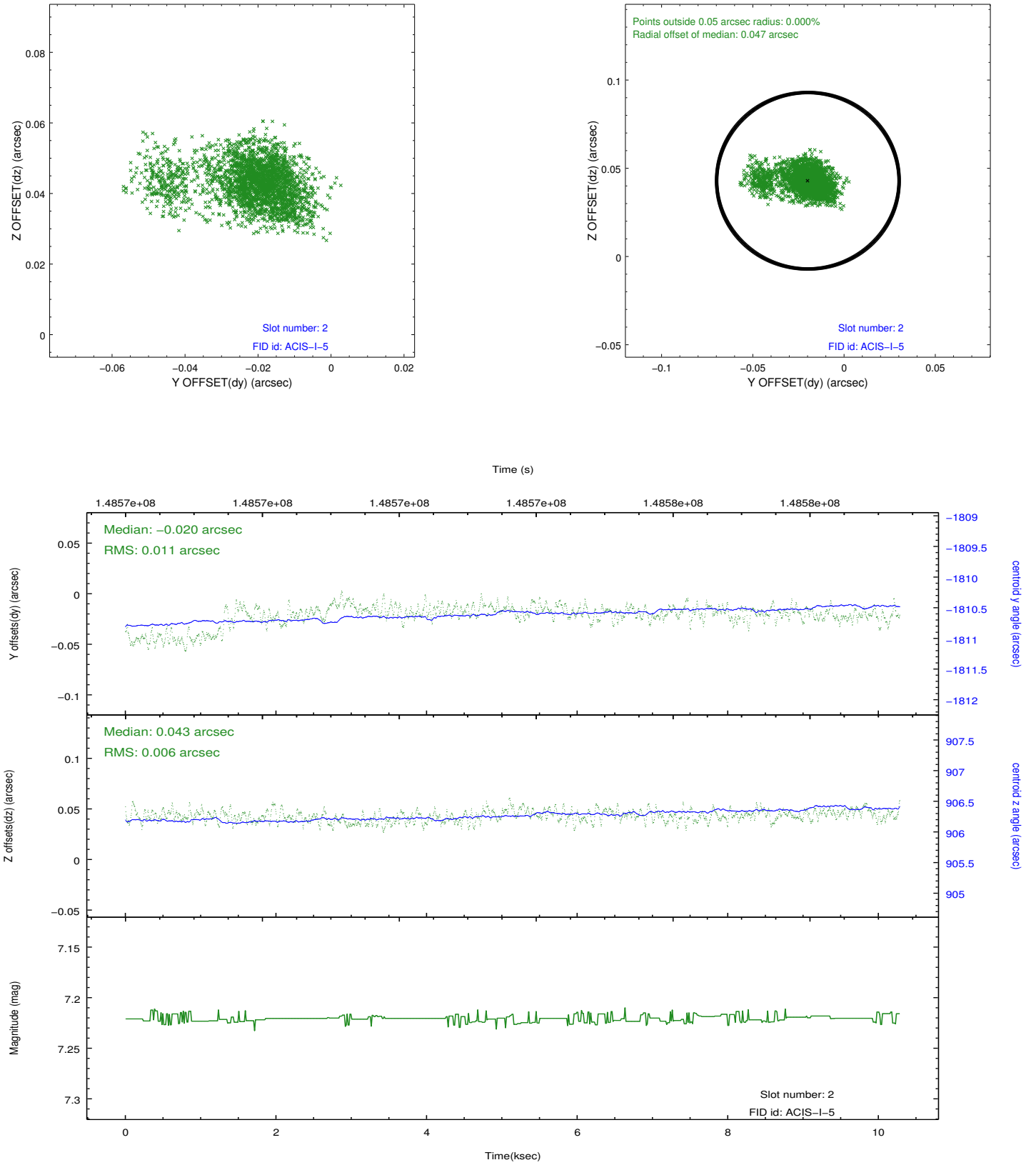
2.5.1 Slot 0



2.5.2 Slot 1



2.5.3 Slot 2



A Summary

A.1 Status

V&V Scientist	Jen Lauer
V&V Date (YYYY-MM-DD)	2012.10.23
V&V Edition	1
V&V Disposition and Status	OK
V&V Charge Time	10.118

A.2 Comments