

# V&V Reference Report

## L2 ASCDS Version : 7.6.9

Observation 3241 - L2 Version 001  
Chandra X-Ray Center

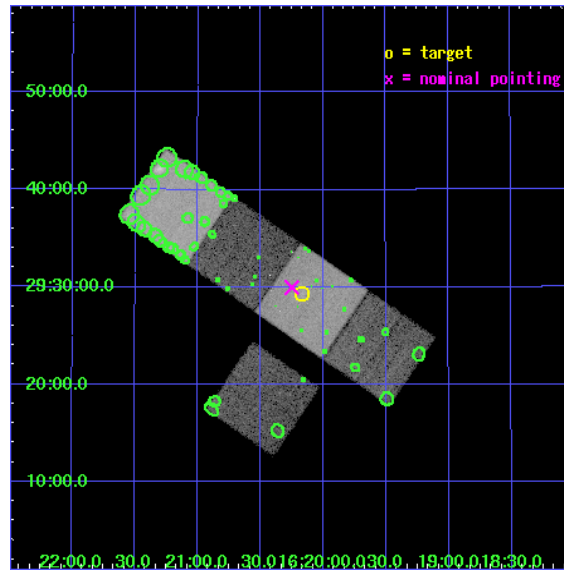
L2 Processing Date : Oct 16 2006

## Contents

<b>1</b>	<b>Front</b>	<b>2</b>
<b>2</b>	<b>OBI</b>	<b>3</b>
2.1	OBI . . . . .	3
2.1.1	Images . . . . .	3
2.1.2	Bias . . . . .	3
2.1.3	Parameters . . . . .	4
2.1.4	Events . . . . .	4
2.2	Compared Parameters . . . . .	5
2.3	Aspect . . . . .	6
2.4	Star Slots . . . . .	9
2.4.1	Slot 3 . . . . .	9
2.4.2	Slot 4 . . . . .	10
2.4.3	Slot 5 . . . . .	11
2.4.4	Slot 6 . . . . .	12
2.4.5	Slot 7 . . . . .	13
2.5	FID Slots . . . . .	14
2.5.1	Slot 0 . . . . .	14
2.5.2	Slot 1 . . . . .	15
2.5.3	Slot 2 . . . . .	16
<b>3</b>	<b>Point Sources</b>	<b>17</b>
<b>A</b>	<b>Summary</b>	<b>18</b>
A.1	Status . . . . .	18
A.2	Comments . . . . .	18

# 1 Front

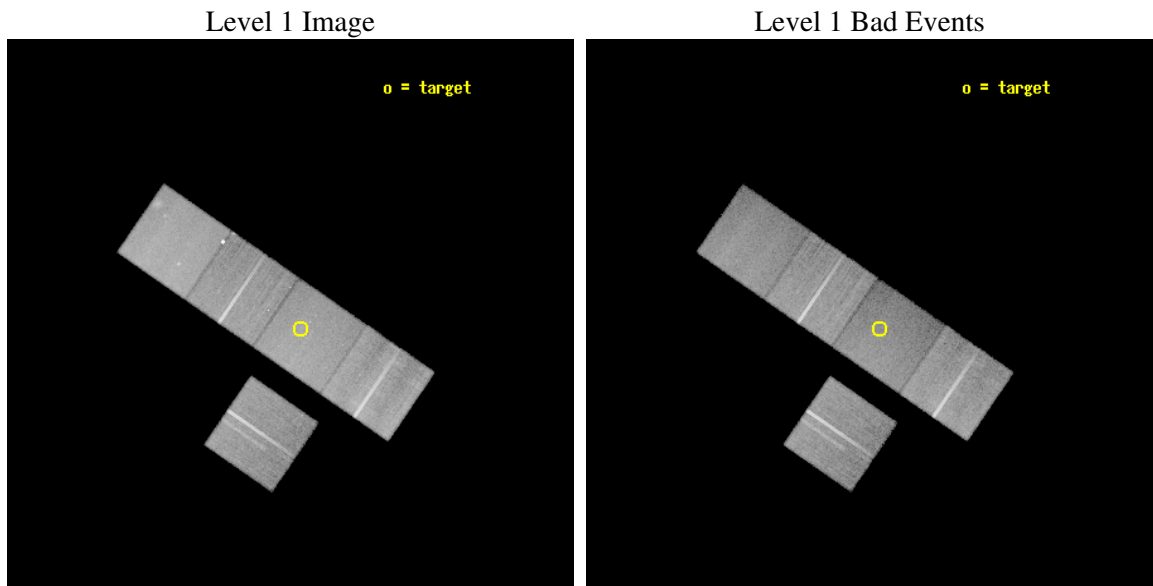
seq_num	800241
obs_id	3241
title	RICH, OPTICALLY-SELECTED GALAXY CLUSTERS AT Z~1 FROM THE RCS SURVEY
observer	Dr. Erica Ellingson
object	RCS1620+2929
dtcycle	0
cycle	P
ra_targ	245.041667
dec_targ	29.489306
ra_nom	245.06235063503
dec_nom	29.499601424853
roll_nom	34.496890827571
revision	2
ontime	37128.699928612
livetime	36643.586130293
ontime3	37119.277047962
ontime5	37128.699928612
ontime6	37122.418028116
ontime7	37128.699928612
ontime8	37125.558968395
l2events	260734



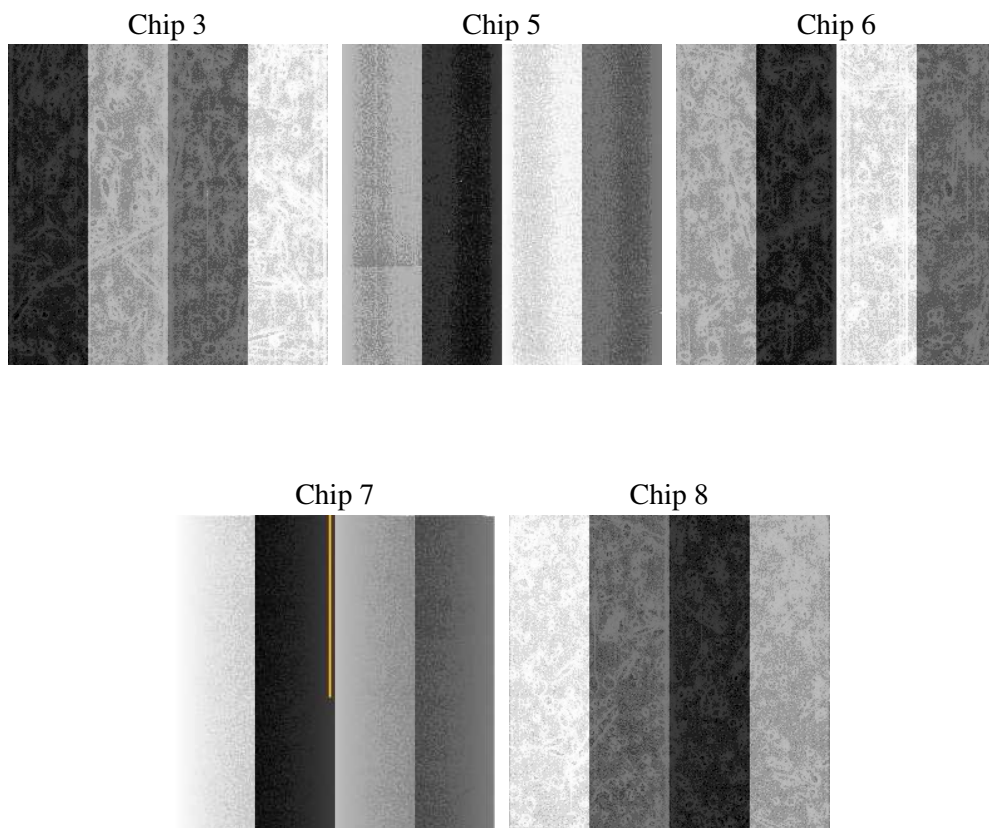
## 2 OBI

### 2.1 OBI

#### 2.1.1 Images



#### 2.1.2 Bias



### 2.1.3 Parameters

obi_num	1
ascdsver	7.6.9
caldbver	3.2.3
date	2006-10-16T06:00:49
revision	2

sched_exp_time	37000.000000
ontime	37220.86807546
ontime3	37211.445174873
ontime5	37220.86807546
ontime6	37214.586155027
ontime7	37220.86807546
ontime8	37217.727095306
l1events	1100214

### 2.1.4 Events

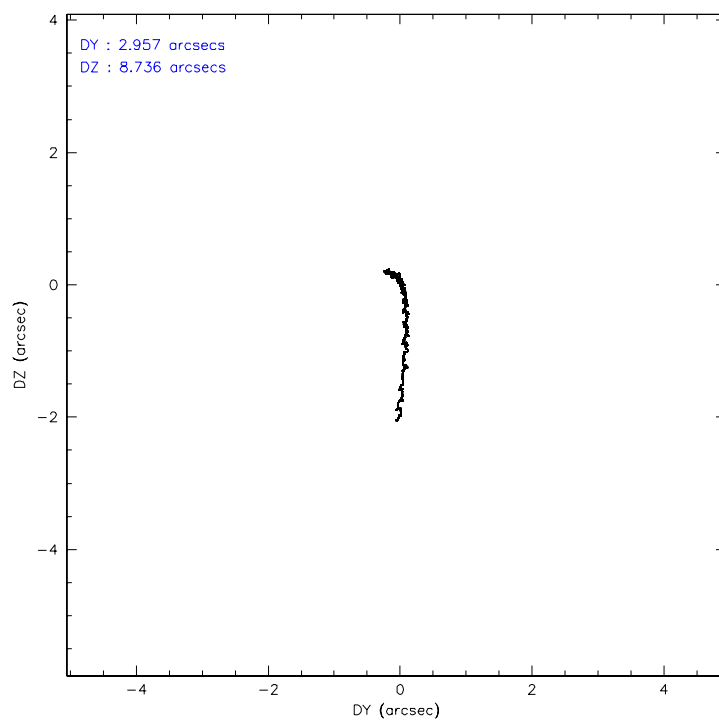
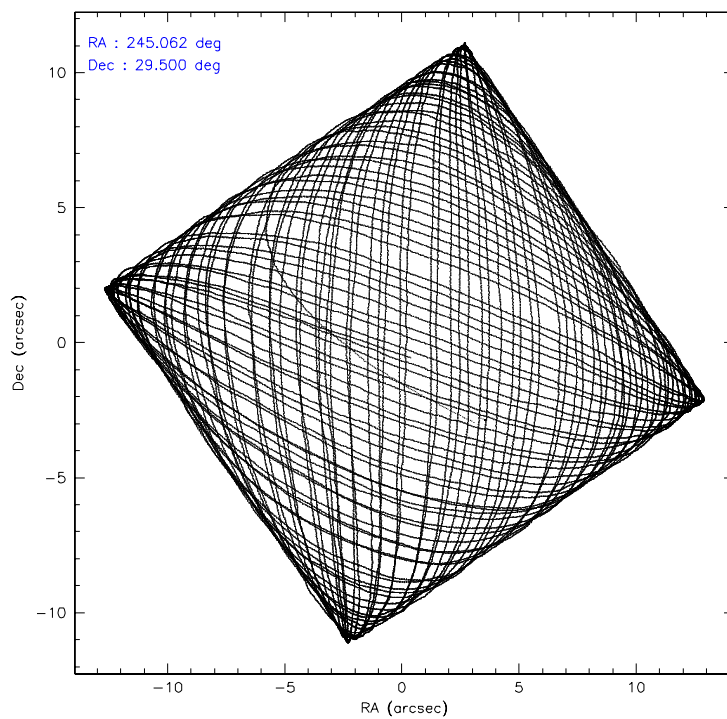
	ccd 3	ccd 5	ccd 6	ccd 7	ccd 8
level 1 events	189330	258309	198816	212961	240798
rejected events	171758	133603	178325	122286	188263
rejected %	90%	51%	89%	57%	78%

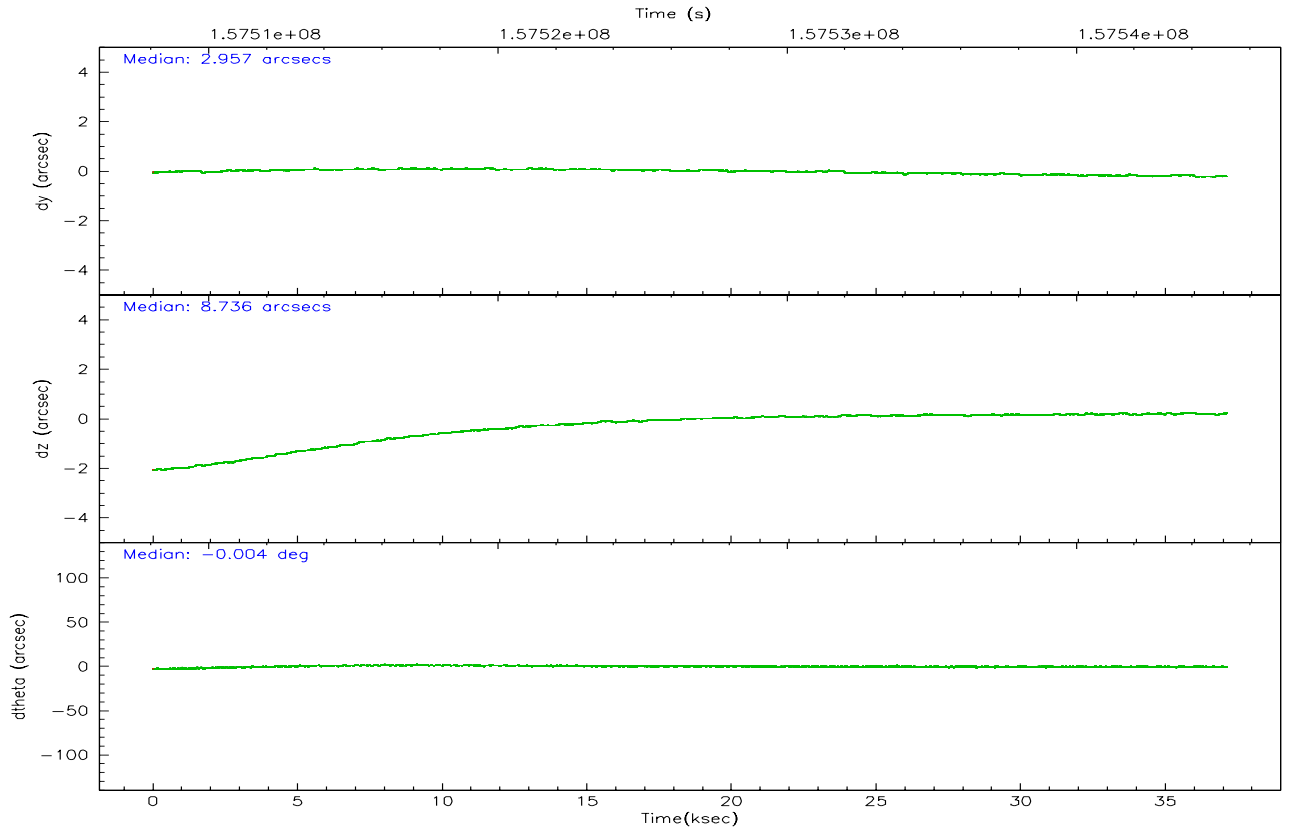
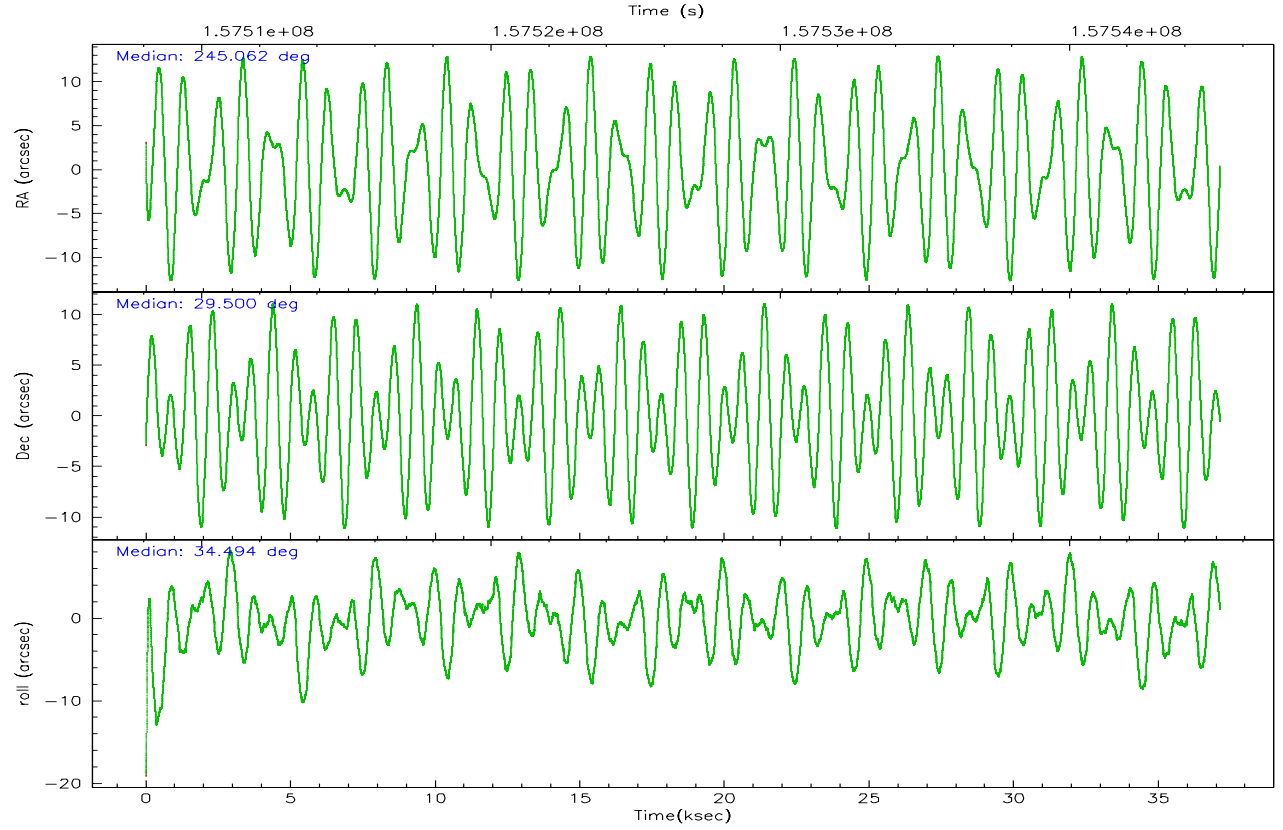
	ccd 3	ccd 5	ccd 6	ccd 7	ccd 8
grade 0 events	6094	10051	7490	6212	16264
	3%	3%	3%	2%	6%
grade 1 events	98	87	70	108	151
	0%	0%	0%	0%	0%
grade 2 events	3698	38417	4154	22235	11371
	1%	14%	2%	10%	4%
grade 3 events	2178	3717	2318	5434	5928
	1%	1%	1%	2%	2%
grade 4 events	2159	3525	2234	5287	5462
	1%	1%	1%	2%	2%
grade 5 events	7305	14006	7501	16419	10548
	3%	5%	3%	7%	4%
grade 6 events	3497	69361	4348	51679	13678
	1%	26%	2%	24%	5%
grade 7 events	164301	119145	170701	105587	177396
	86%	46%	85%	49%	73%

## 2.2 Compared Parameters

Parameter	Planned	Actual	Parameter	Planned	Actual
Instrument	ACIS	ACIS	Obspar format version number	6	6
Detector	ACIS-35678	ACIS-35678	Obspar file type	PREDICTED	ACTUAL
Grating	NONE	NONE	Obspar update status	NONE	UPDATED
Data mode	VFAINT	VFAINT	Number of optional ACIS chips dropped	0	0
Observation mode	POINTING	POINTING	On-chip summing requested	N	N
Pointing RA	245.049294	245.0623506350285	Subarray requested	NONE	NONE
Pointing Dec	29.474867	29.49960142485313	Alternating exposures requested	N	N
Pointing Roll	34.346694	34.49689082757096	Primary exposure time	0.000000	3.1
SIM focus pos (mm)	-0.684267	-0.6828225247311905			
SIM defocus (mm)	0	0.001444936568705701			
SIM translation stage pos (mm)	-190.132523	-190.1425803651734			
SIM translation stage offset (mm)	0	0.01005778216563158			
Observation start time	157508223.184000	157507206.33145			
Observation start date	2002-12-29T00:15:59	2002-12-29T00:00:06			
Observation end time	157545223.184000	157545597.70806			
Observation end date	2002-12-29T10:32:39	2002-12-29T10:39:57			
Read mode	TIMED	TIMED			

## 2.3 Aspect



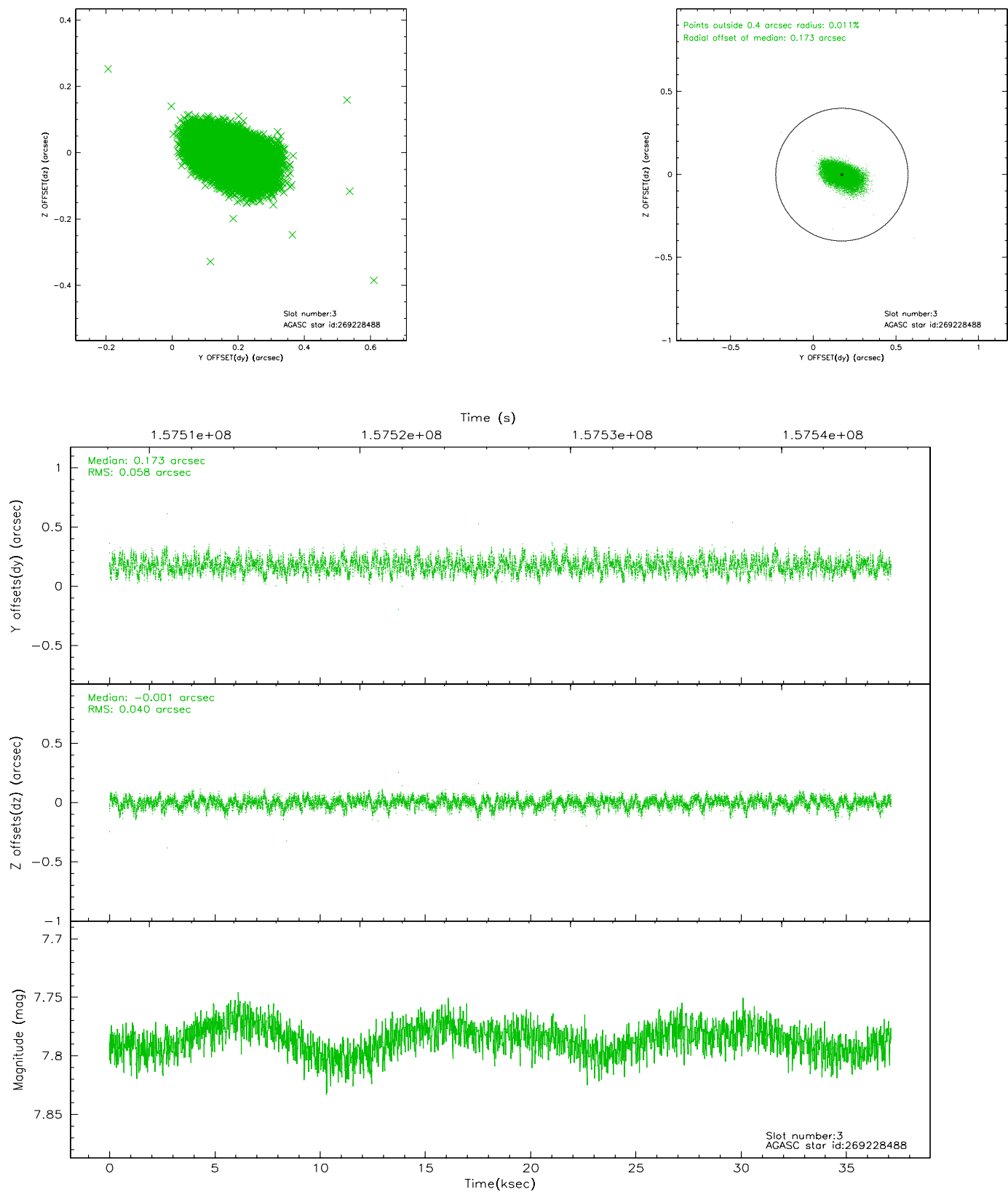


### Slot Statistics

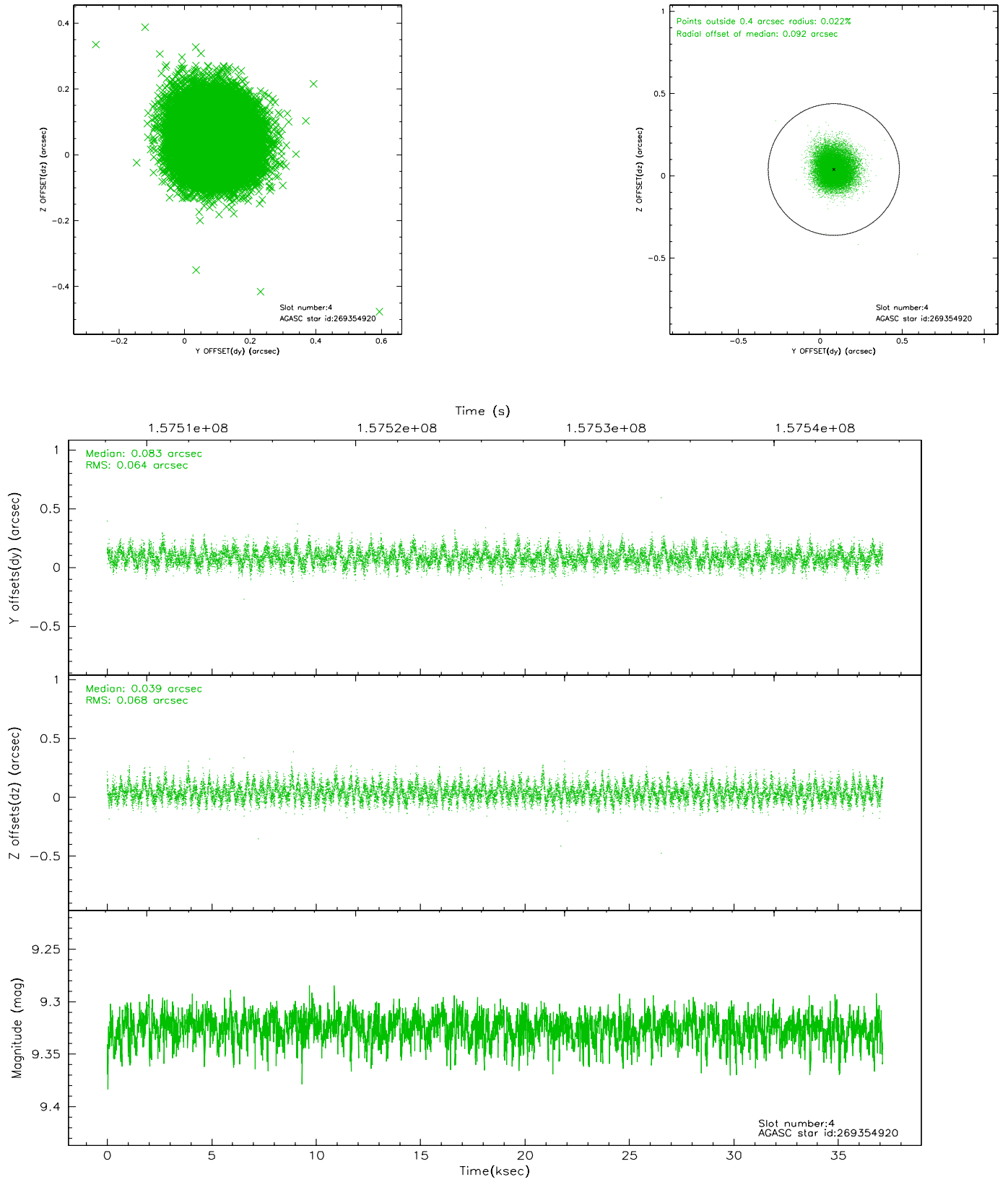
slot	status	id	mag	n_pts	med_dy	med_dz	dr1	dr2	ra	dec	mean_y	mean_z
0	FID	ACIS-S-2	7.11	9058	-0.009	0.013	0.009	0.015	0.000000	0.000000	-755.58	-1729.53
1	FID	ACIS-S-4	7.20	9058	-0.041	0.001	0.006	0.010	0.000000	0.000000	2157.65	178.92
2	FID	ACIS-S-5	7.24	9057	0.019	-0.005	0.010	0.015	0.000000	0.000000	-1808.36	172.61
3	GUIDE	269228488	7.79	18114	0.173	-0.001	0.075	0.126	244.288777	29.428336	-2058.56	1213.65
4	GUIDE	269354920	9.33	18108	0.083	0.039	0.100	0.158	245.289727	29.523415	721.12	-279.66
5	GUIDE	269362800	9.33	18007	-0.023	0.123	0.097	0.159	245.293073	28.931223	-469.31	-2048.39
6	GUIDE	269224224	9.87	18098	-0.070	-0.220	0.126	0.205	244.733068	29.916975	84.12	1871.70
7	GUIDE	269361128	8.90	18108	-0.165	0.062	0.085	0.138	245.711822	29.831818	2436.78	-101.08

## 2.4 Star Slots

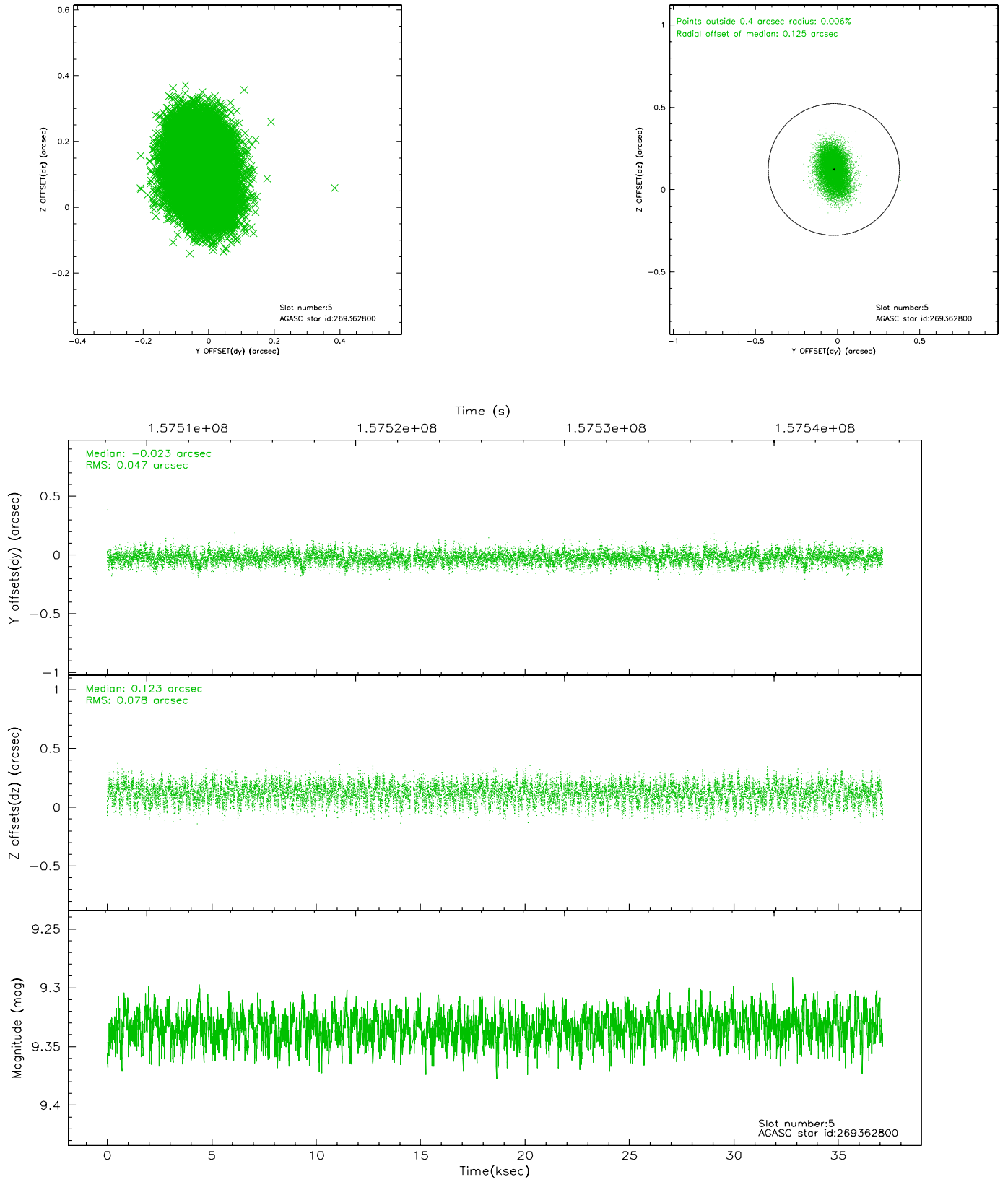
### 2.4.1 Slot 3



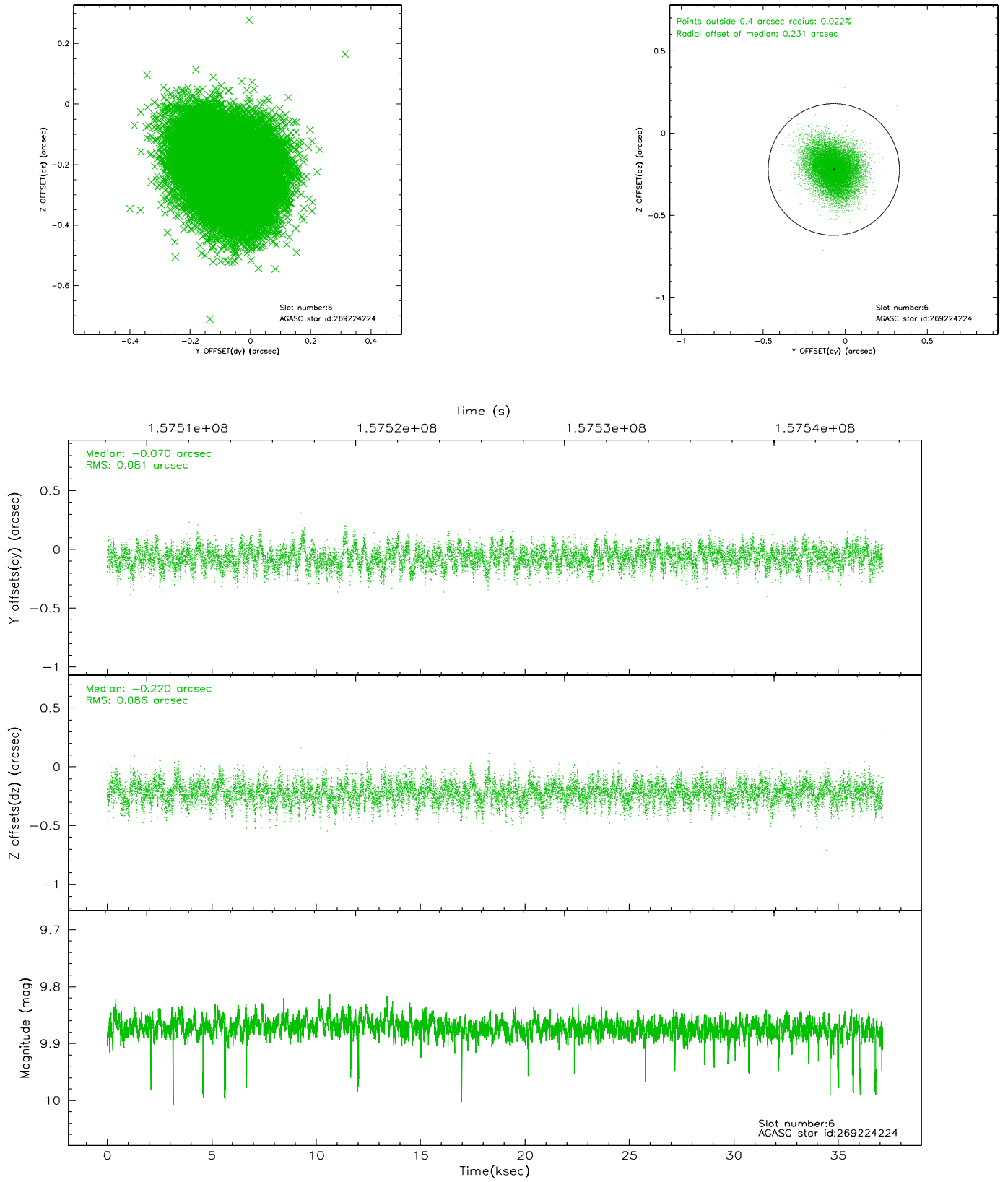
## 2.4.2 Slot 4



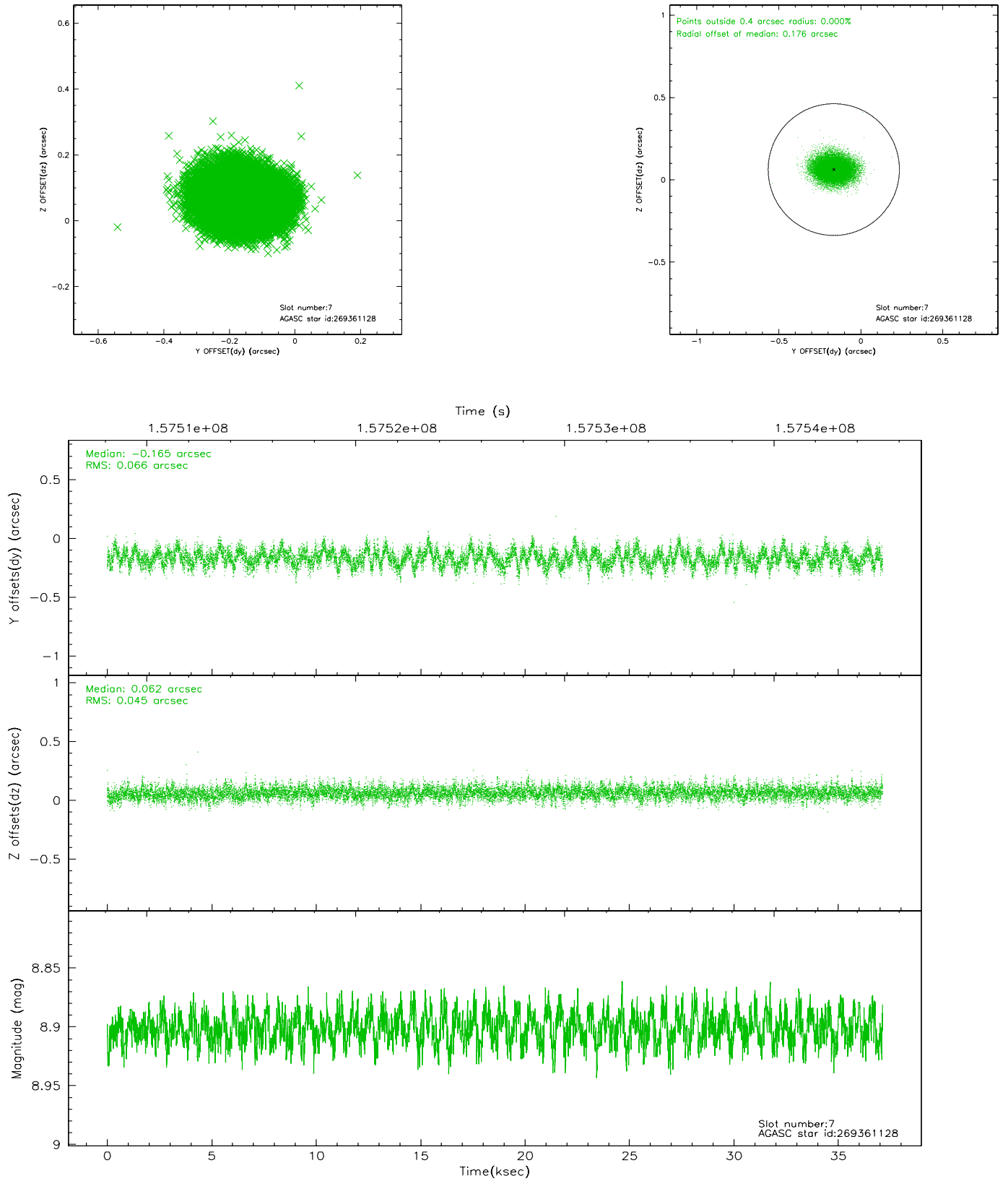
### 2.4.3 Slot 5



## 2.4.4 Slot 6

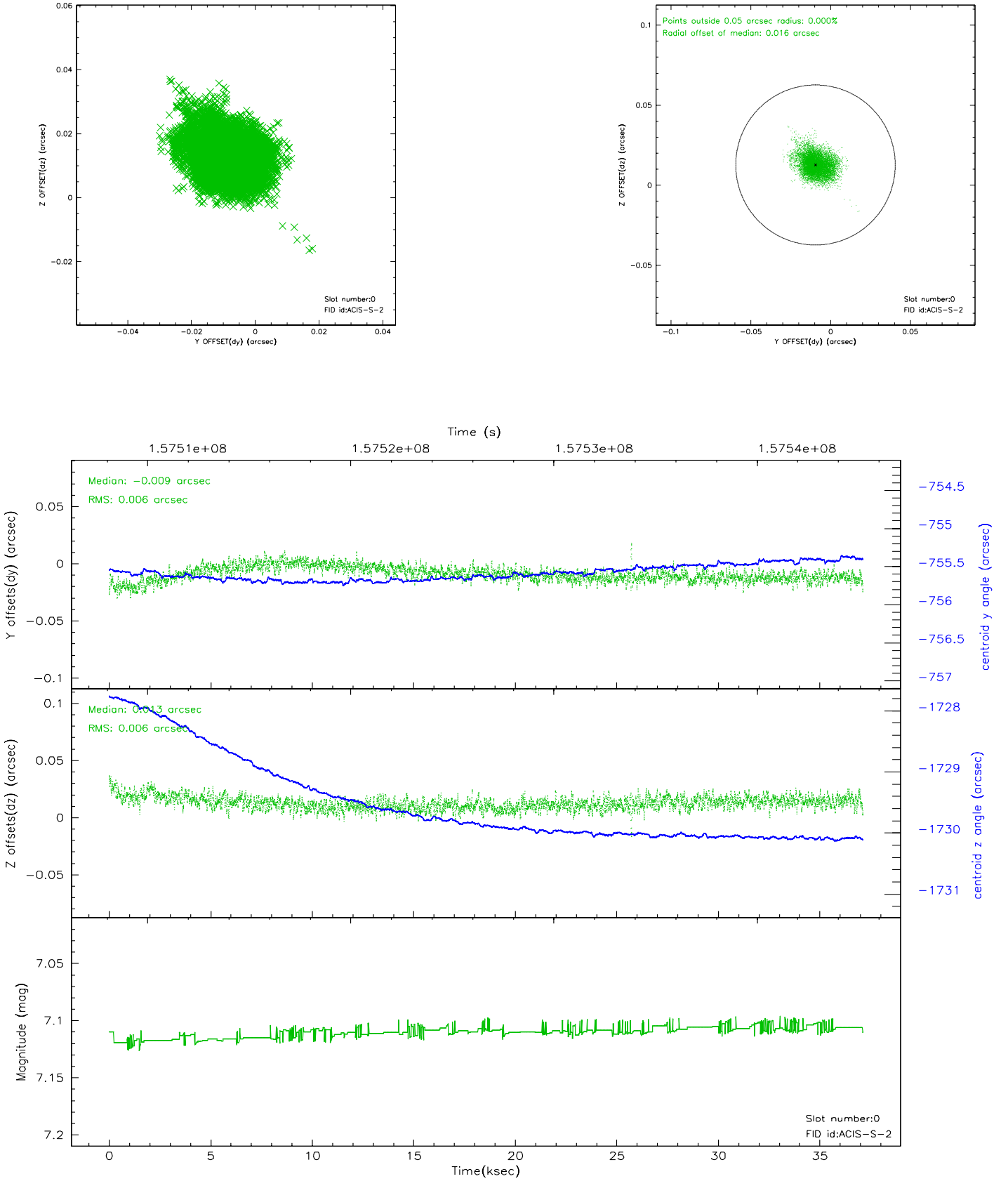


## 2.4.5 Slot 7

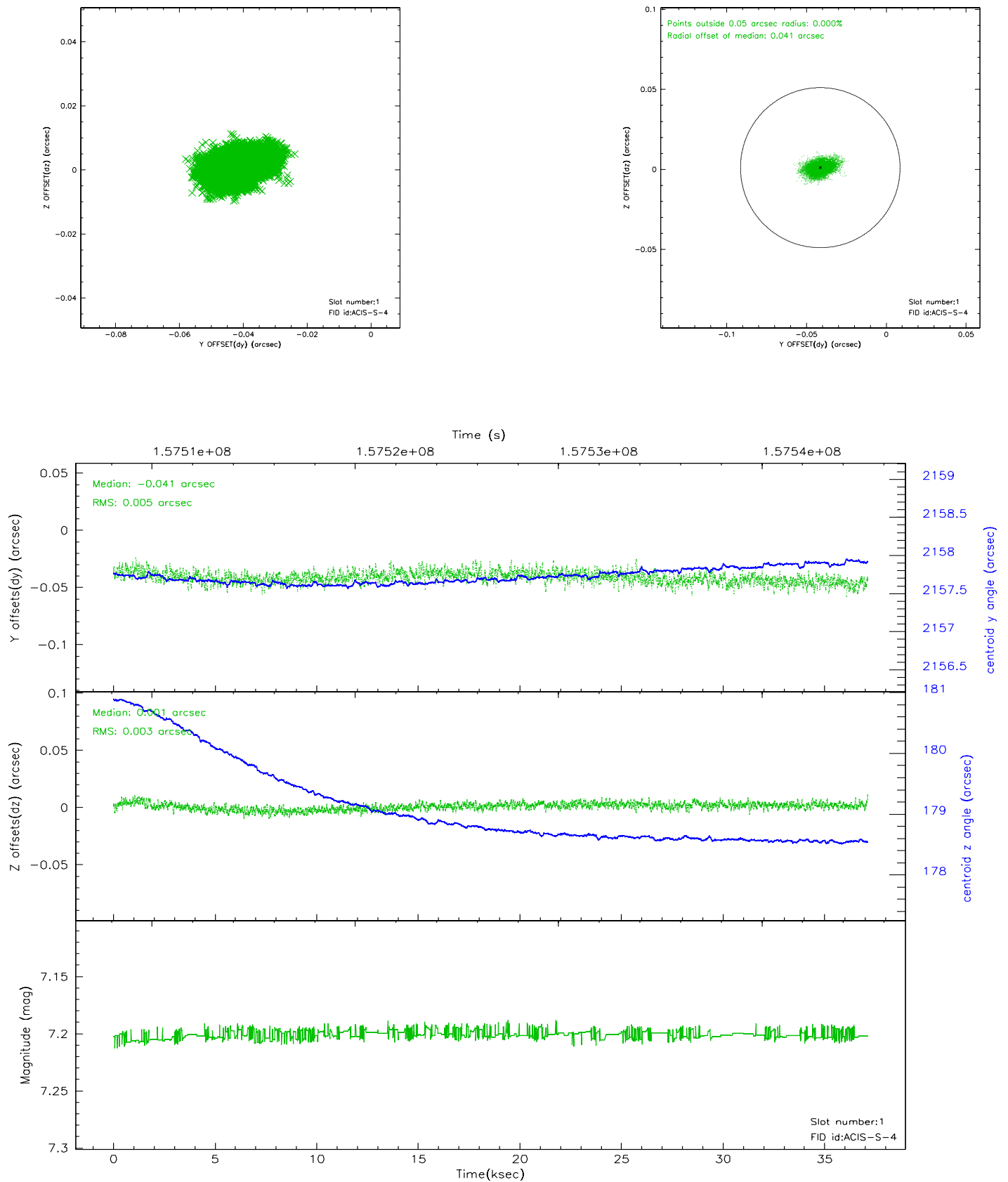


## 2.5 FID Slots

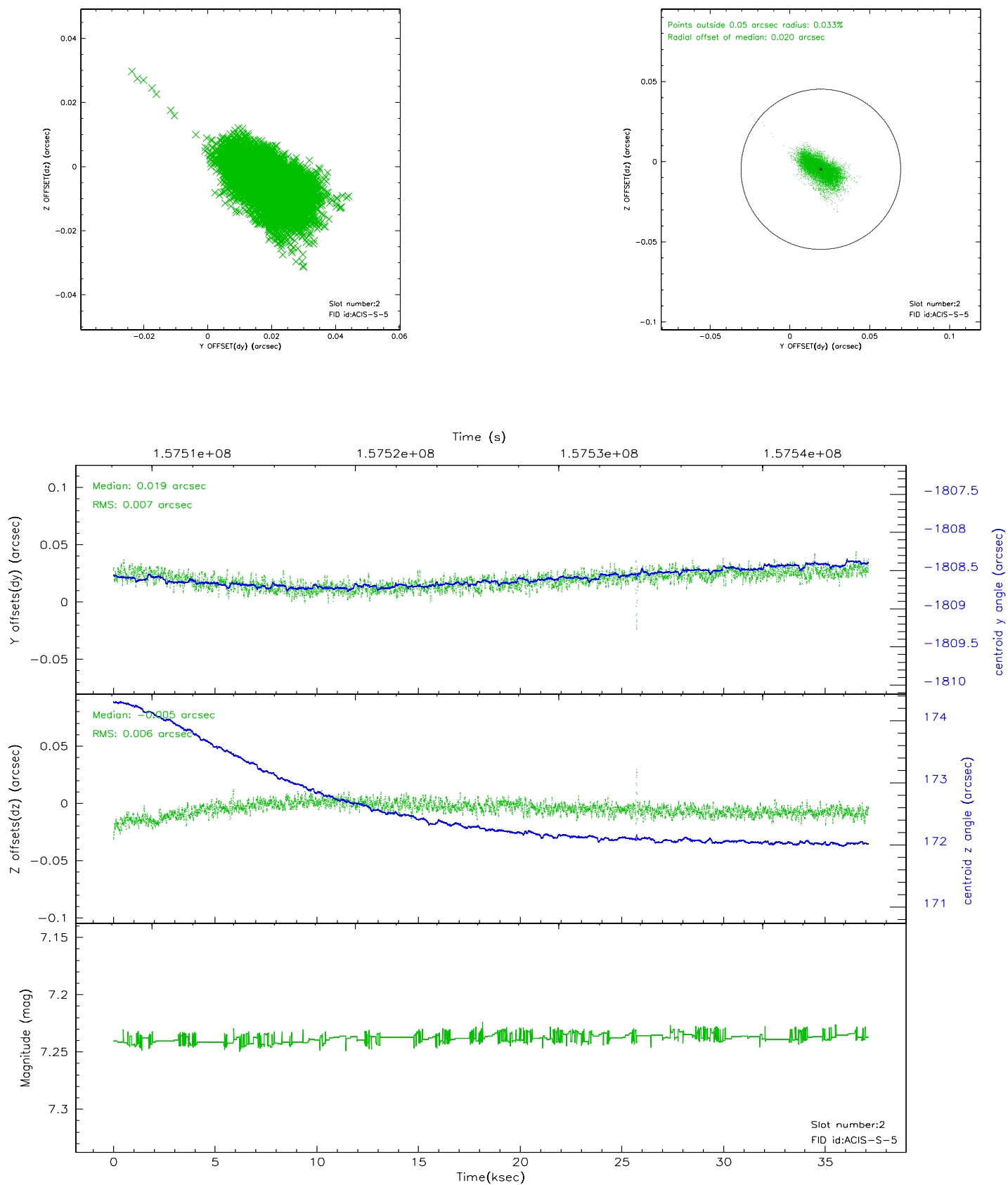
### 2.5.1 Slot 0



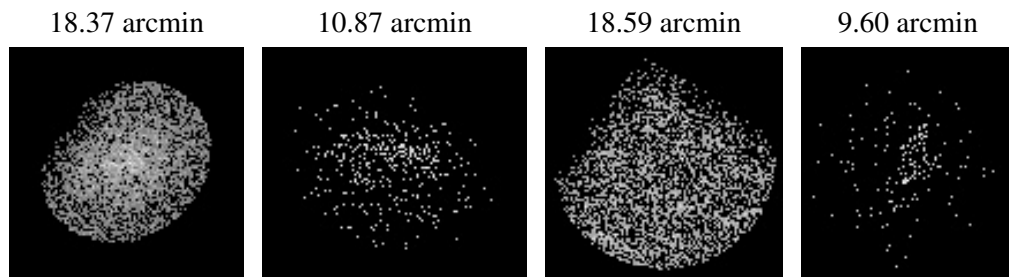
## 2.5.2 Slot 1



### 2.5.3 Slot 2



### 3 Point Sources



## A Summary

### A.1 Status

V&V Scientist	Jen Lauer
V&V Date (YYYY-MM-DD)	2006.10.16
V&V Edition	1
V&V Disposition and Status	OK
V&V Charge Time	37.128

### A.2 Comments