

V&V Reference Report

L2 ASCDS Version : 7.6.8

Observation 3237 - L2 Version 001
Chandra X-Ray Center

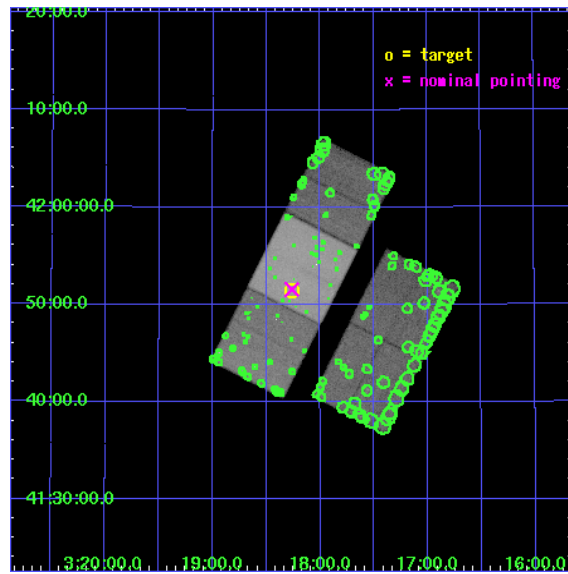
L2 Processing Date : Jul 25 2006

Contents

1	Front	2
2	OBI	3
2.1	OBI	3
2.1.1	Images	3
2.1.2	Bias	3
2.1.3	Parameters	4
2.1.4	Events	4
2.2	Compared Parameters	5
2.3	Aspect	6
2.4	Star Slots	9
2.4.1	Slot 3	9
2.4.2	Slot 4	10
2.4.3	Slot 5	11
2.4.4	Slot 6	12
2.4.5	Slot 7	13
2.5	FID Slots	14
2.5.1	Slot 0	14
2.5.2	Slot 1	15
2.5.3	Slot 2	16
3	Point Sources	17
A	Summary	18
A.1	Status	18
A.2	Comments	18

1 Front

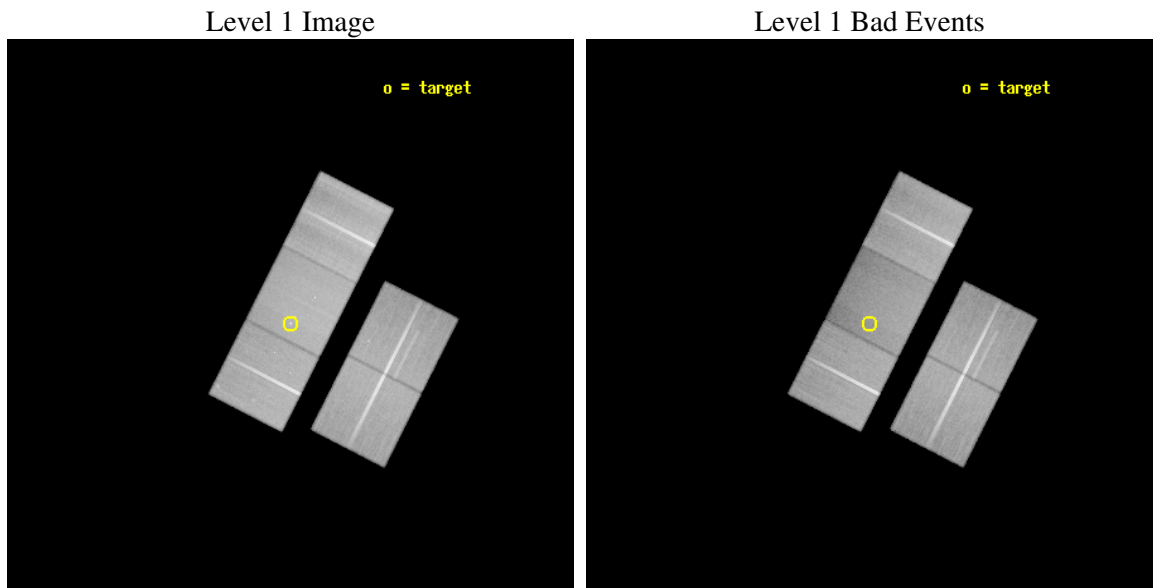
seq_num	800237
obs_id	3237
title	HEAD-TAIL GALAXIES AS PROBES OF SUBSTRUCTURE IN THE PERSEUS CLUSTER OF GALAXIES
observer	Dr Diab Jerius
object	NGC 1265
dtcycle	0
cycle	P
ra_targ	49.565417
dec_targ	41.857778
ra_nom	49.565900114551
dec_nom	41.859636702387
roll_nom	296.95709698373
revision	2
ontime	95135.899817079
livetime	93892.879247939
ontime2	95117.054005712
ontime3	95117.05397585
ontime6	95098.208114564
ontime7	95135.899817079
ontime8	95126.476876587
l2events	617167



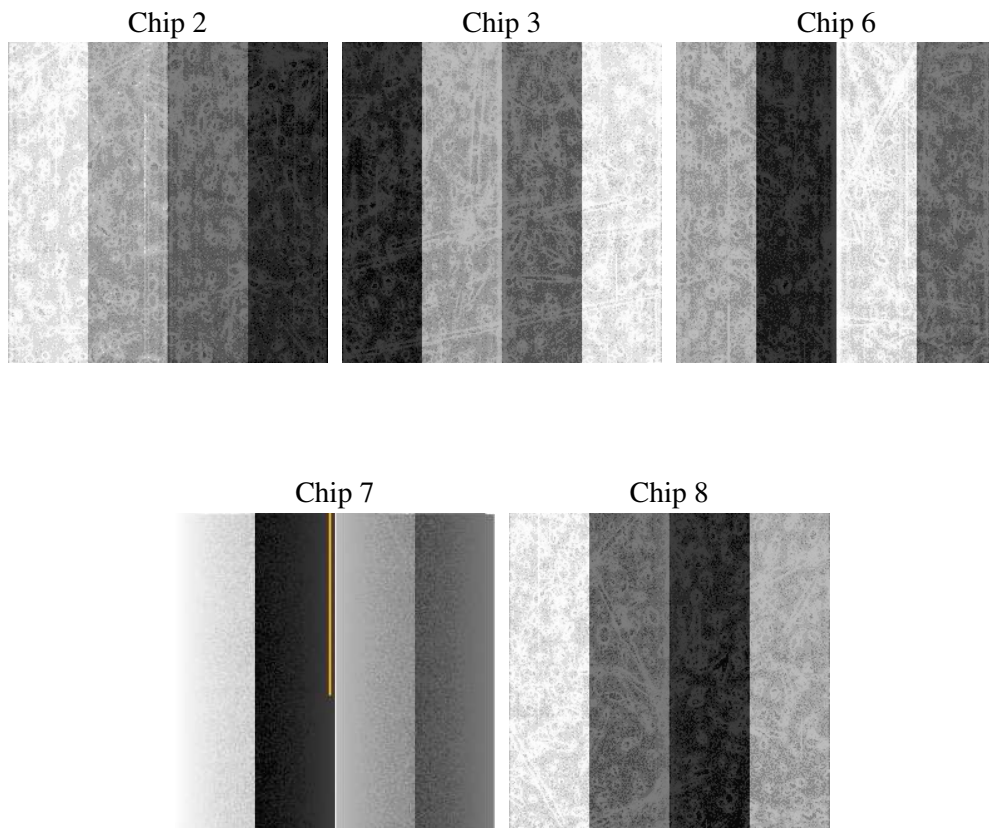
2 OBI

2.1 OBI

2.1.1 Images



2.1.2 Bias



2.1.3 Parameters

obi_num	2
ascdsver	7.6.8
caldbver	3.2.2
date	2006-07-25T03:09:18
revision	2

sched_exp_time	95000.000000
ontime	95140.92301017
ontime2	95122.077198803
ontime3	95122.077168941
ontime6	95103.231307656
ontime7	95140.92301017
ontime8	95131.50004977
l1events	2988999

2.1.4 Events

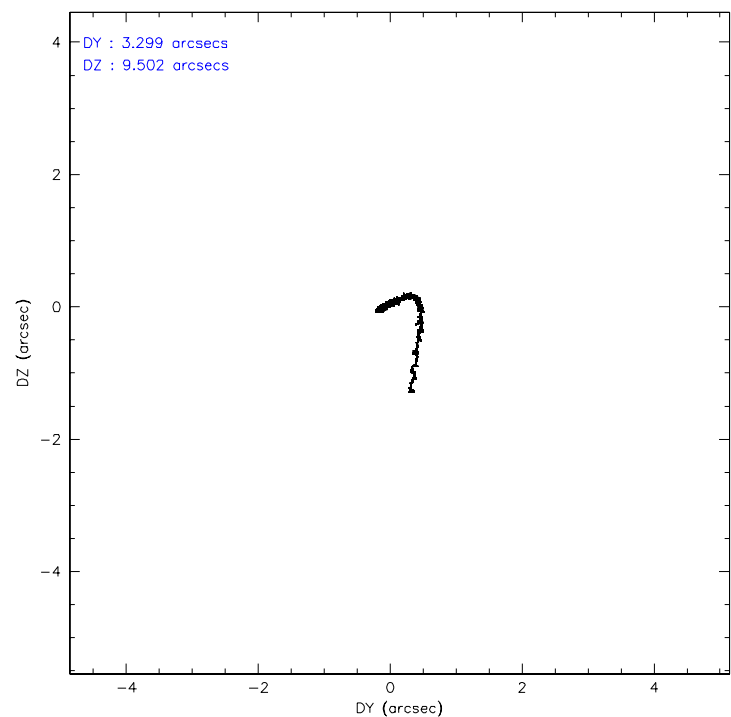
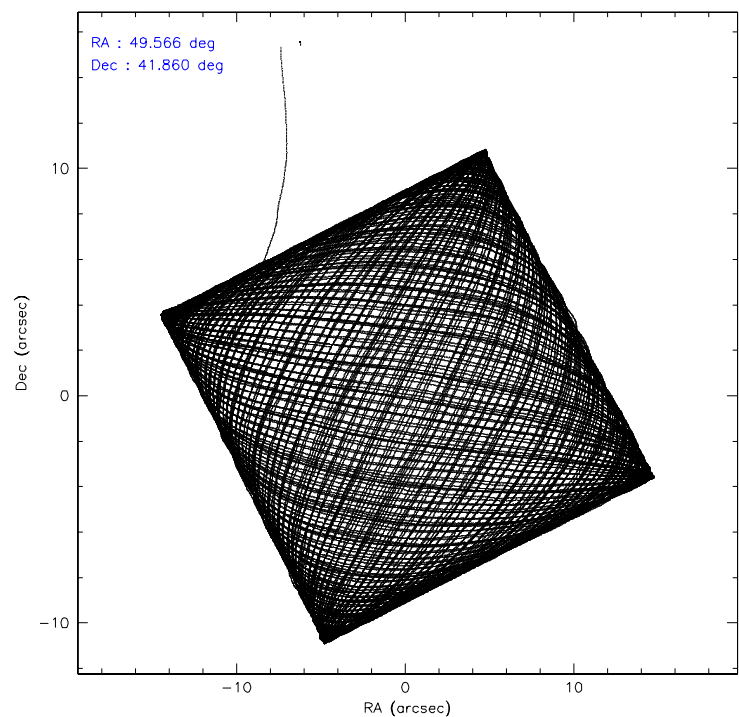
	ccd 2	ccd 3	ccd 6	ccd 7	ccd 8
level 1 events	568077	525972	609870	616856	668224
rejected events	480224	458121	476844	321894	507444
rejected %	84%	87%	78%	52%	75%

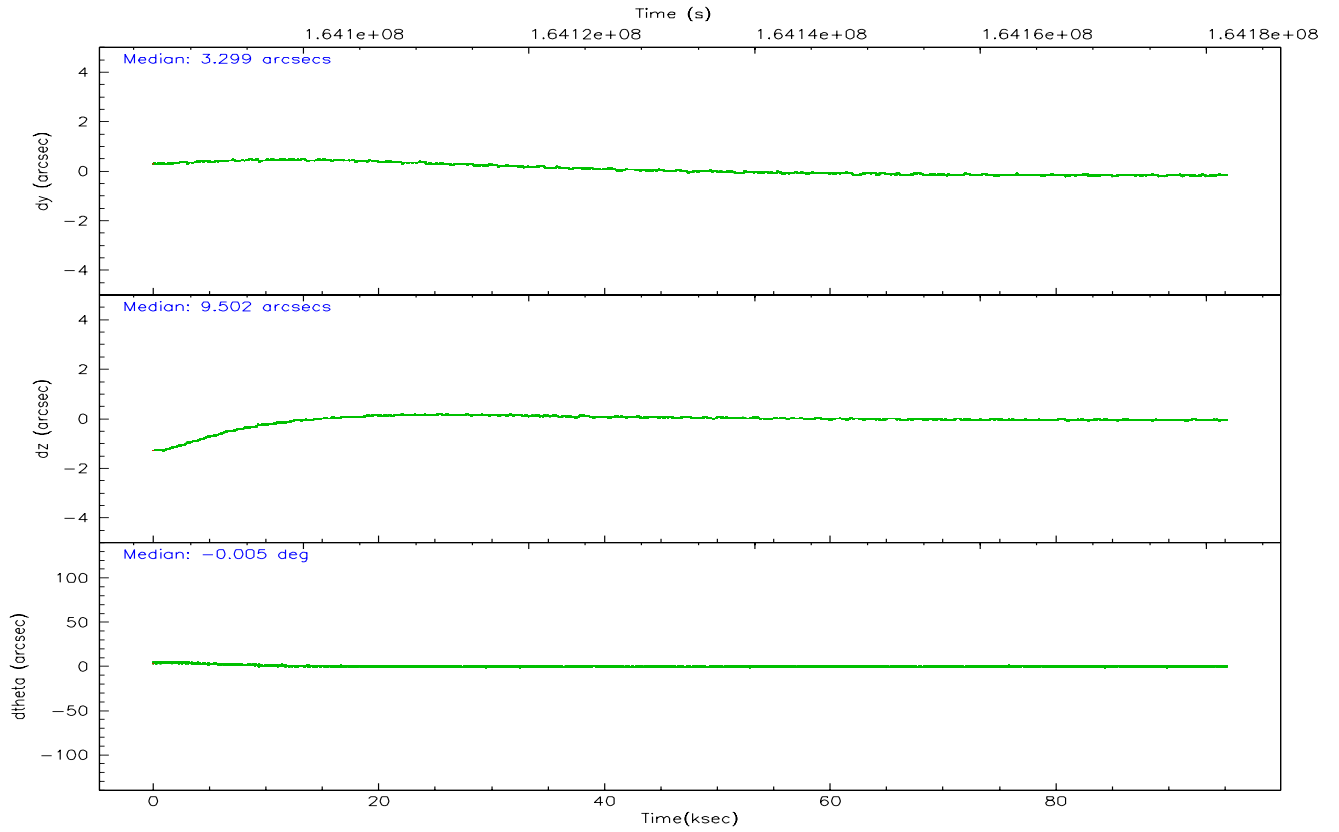
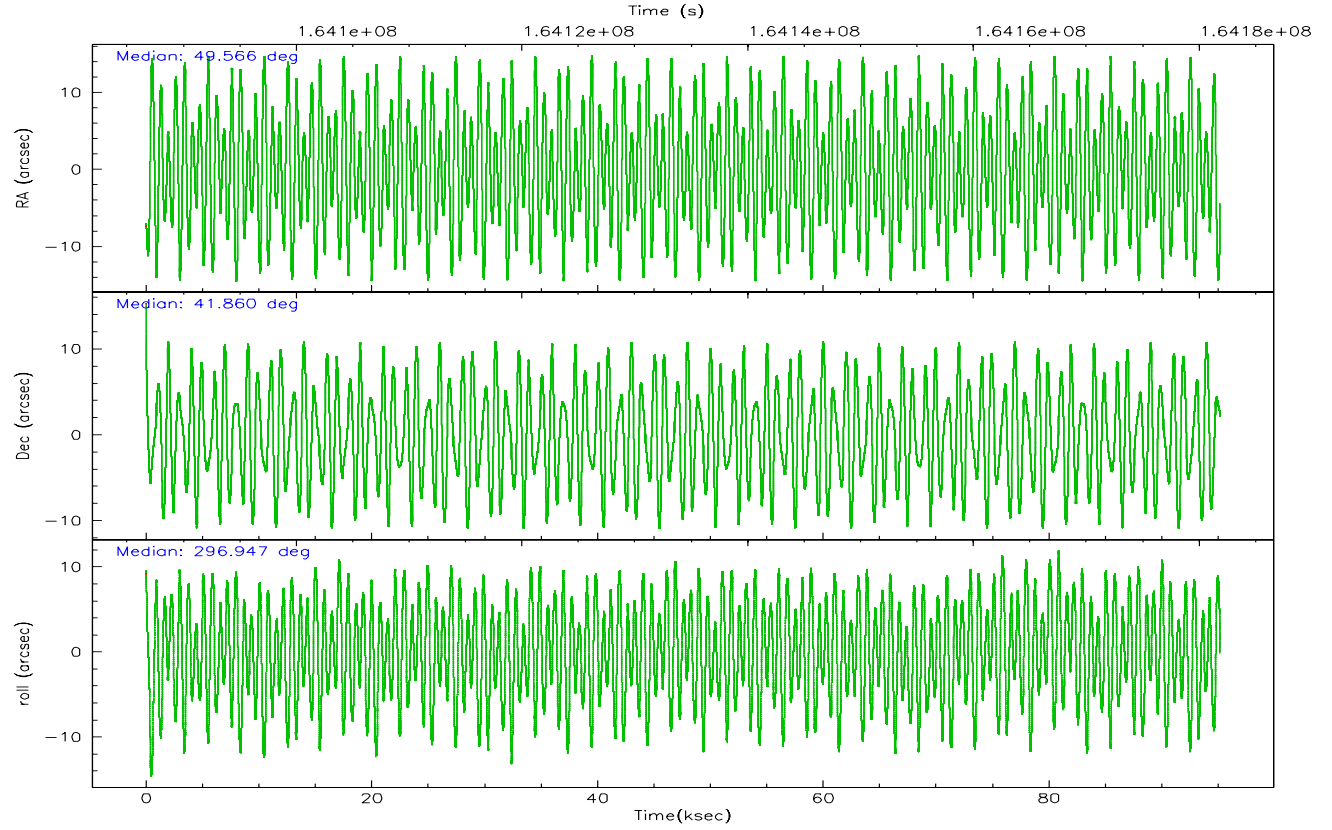
	ccd 2	ccd 3	ccd 6	ccd 7	ccd 8
grade 0 events	49297	33758	83151	27349	57885
	8%	6%	13%	4%	8%
grade 1 events	373	334	464	296	525
	0%	0%	0%	0%	0%
grade 2 events	15276	11851	19491	74094	33205
	2%	2%	3%	12%	4%
grade 3 events	6770	6223	8755	20070	16141
	1%	1%	1%	3%	2%
grade 4 events	6724	6215	8374	19425	15192
	1%	1%	1%	3%	2%
grade 5 events	16110	19111	20305	42010	28119
	2%	3%	3%	6%	4%
grade 6 events	9792	9808	13261	154040	38359
	1%	1%	2%	24%	5%
grade 7 events	463735	438672	456069	279572	478798
	81%	83%	74%	45%	71%

2.2 Compared Parameters

Parameter	Planned	Actual	Parameter	Planned	Actual
Instrument	ACIS	ACIS	Obspar format version number	6	6
Detector	ACIS-23678	ACIS-23678	Obspar file type	PREDICTED	ACTUAL
Grating	NONE	NONE	Obspar update status	NONE	UPDATED
Data mode	VFAINT	VFAINT	On-chip summing requested	N	N
Observation mode	POINTING	POINTING	Subarray requested	NONE	NONE
Pointing RA	49.534993	49.56590011455092	Alternating exposures requested	N	N
Pointing Dec	41.874158	41.85963670238691	Primary exposure time	0.000000	3.1
Pointing Roll	296.821093	296.9570969837309			
SIM focus pos (mm)	-0.684267	-0.6828225247311905			
SIM defocus (mm)	0	0.001444936568705701			
SIM translation stage pos (mm)	-190.132523	-190.1400660498719			
SIM translation stage offset (mm)	0	0.00754346686406393			
Observation start time	164086870.184000	164085891.33246			
Observation start date	2003-03-15T03:40:06	2003-03-15T03:24:51			
Observation end time	164181870.184000	164182590.34903			
Observation end date	2003-03-16T06:03:26	2003-03-16T06:16:30			
Read mode	TIMED	TIMED			

2.3 Aspect



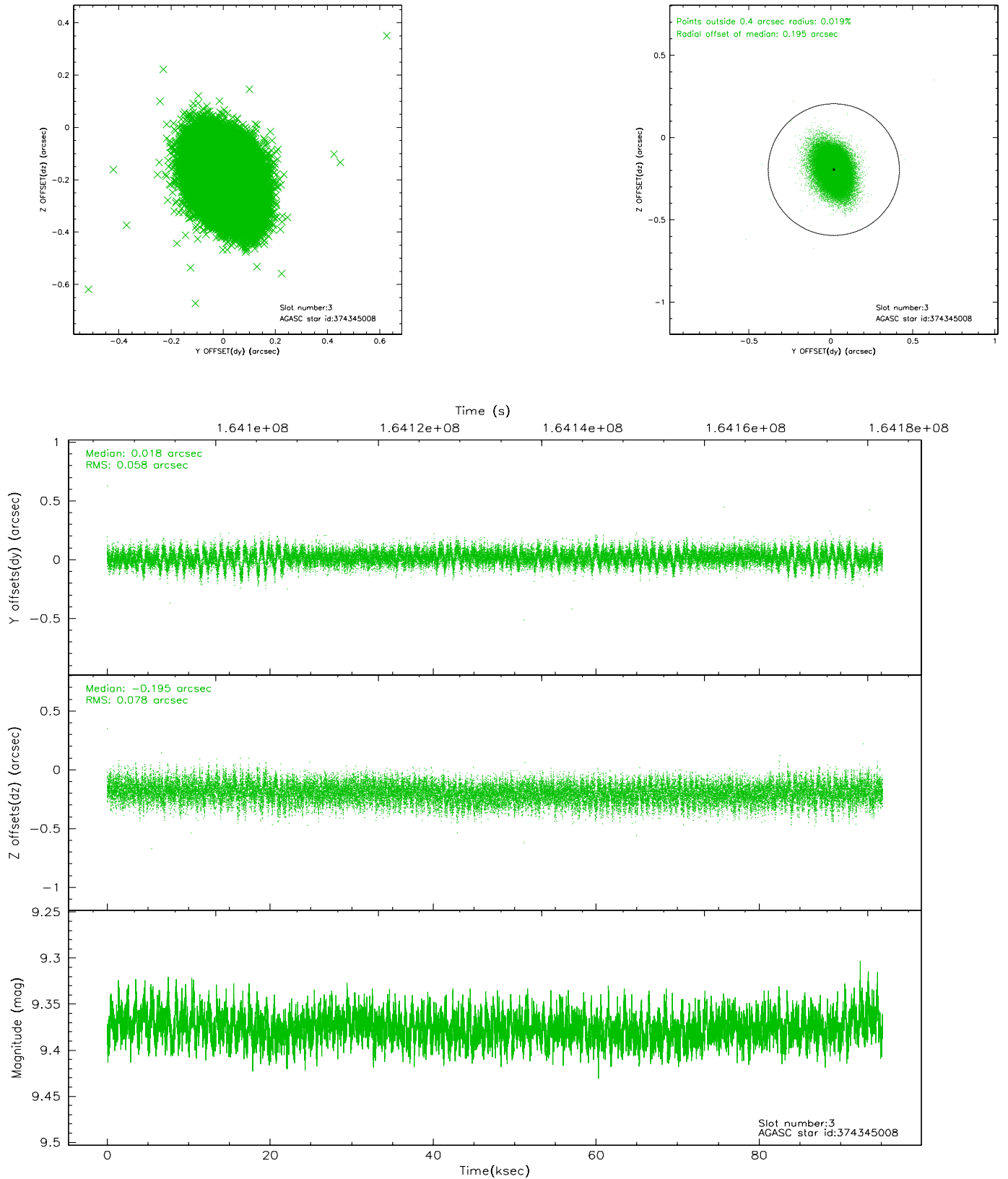


Slot Statistics

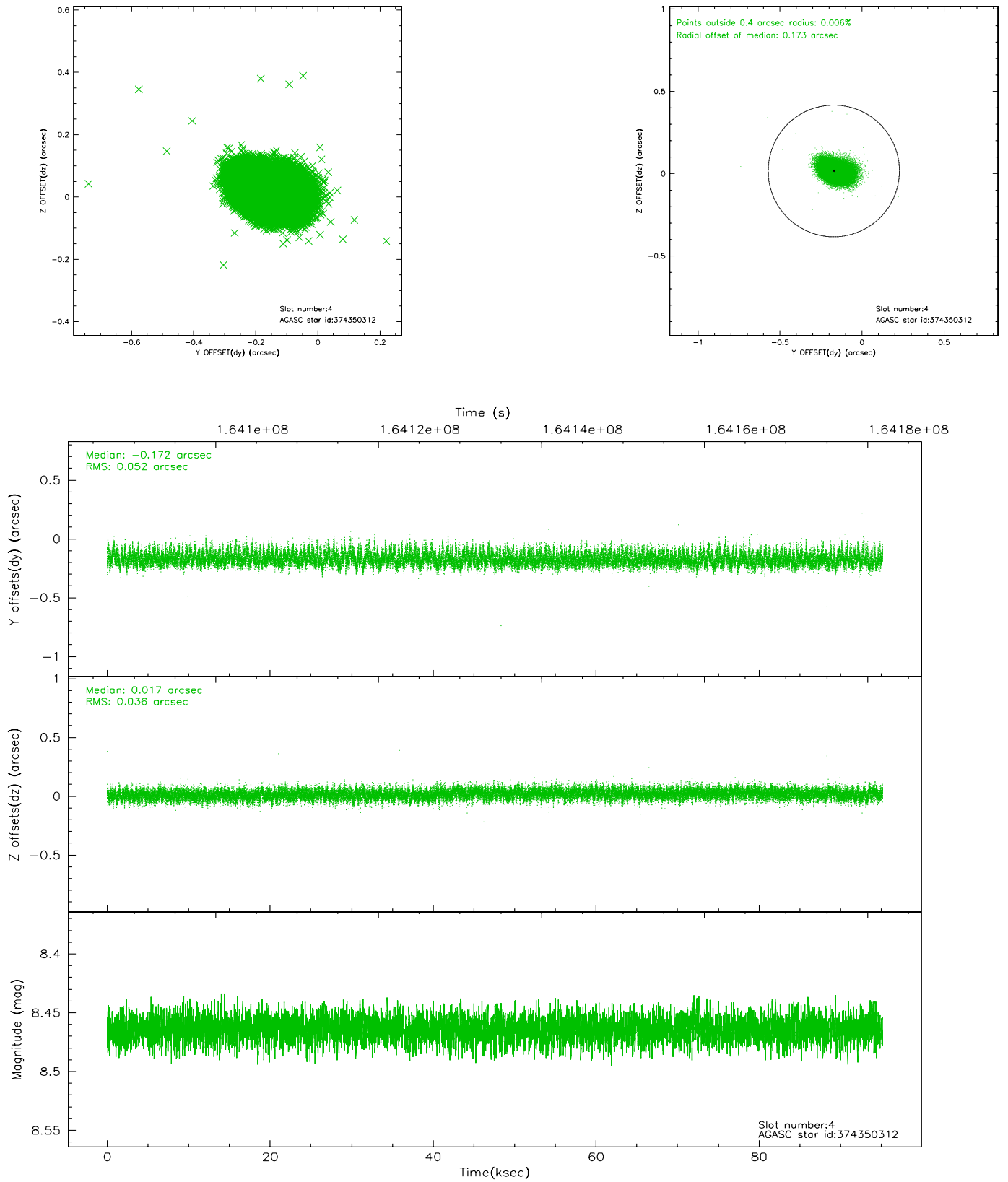
slot	status	id	mag	n_pts	med_dy	med_dz	dr1	dr2	ra	dec	mean_y	mean_z
0	FID	ACIS-S-2	7.11	23215	-0.031	0.009	0.012	0.023	0.000000	0.000000	-756.03	-1730.68
1	FID	ACIS-S-4	7.20	23216	-0.013	0.012	0.009	0.020	0.000000	0.000000	2157.27	177.94
2	FID	ACIS-S-5	7.24	23214	0.012	-0.013	0.009	0.017	0.000000	0.000000	-1808.97	171.42
3	GUIDE	374345008	9.38	46406	0.018	-0.195	0.102	0.173	48.768668	41.619367	-119.39	-2250.05
4	GUIDE	374350312	8.46	46425	-0.172	0.017	0.065	0.113	49.824622	42.610331	-2020.39	1881.23
5	GUIDE	374360816	9.36	46292	0.019	0.111	0.106	0.167	49.918310	42.508790	-1582.14	1939.96
6	GUIDE	376070040	8.41	46408	0.109	0.050	0.072	0.114	50.072031	41.897206	571.34	1324.26
7	GUIDE	374358688	9.30	46293	0.020	0.021	0.098	0.163	49.259903	42.100043	-1058.03	-288.09

2.4 Star Slots

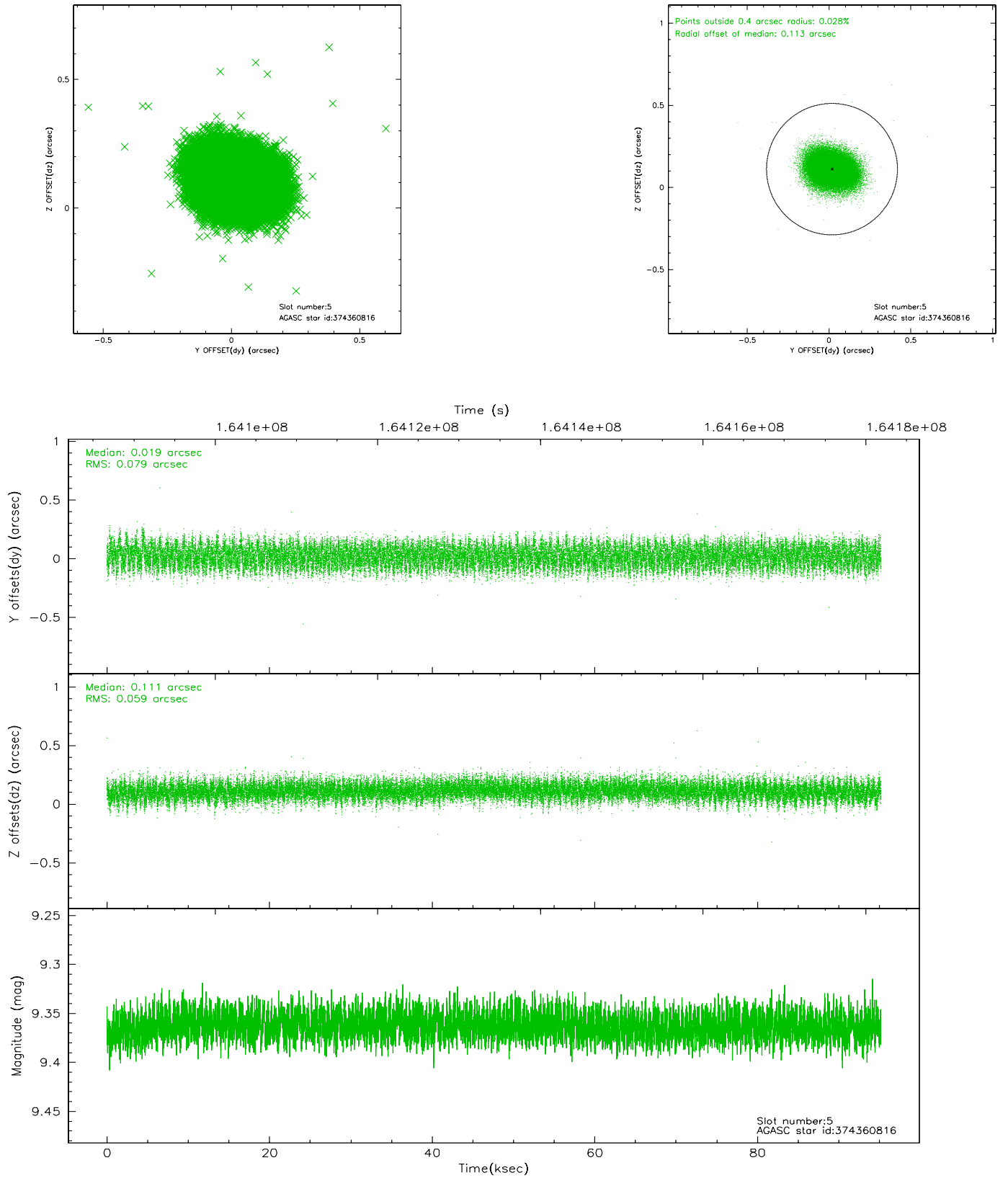
2.4.1 Slot 3



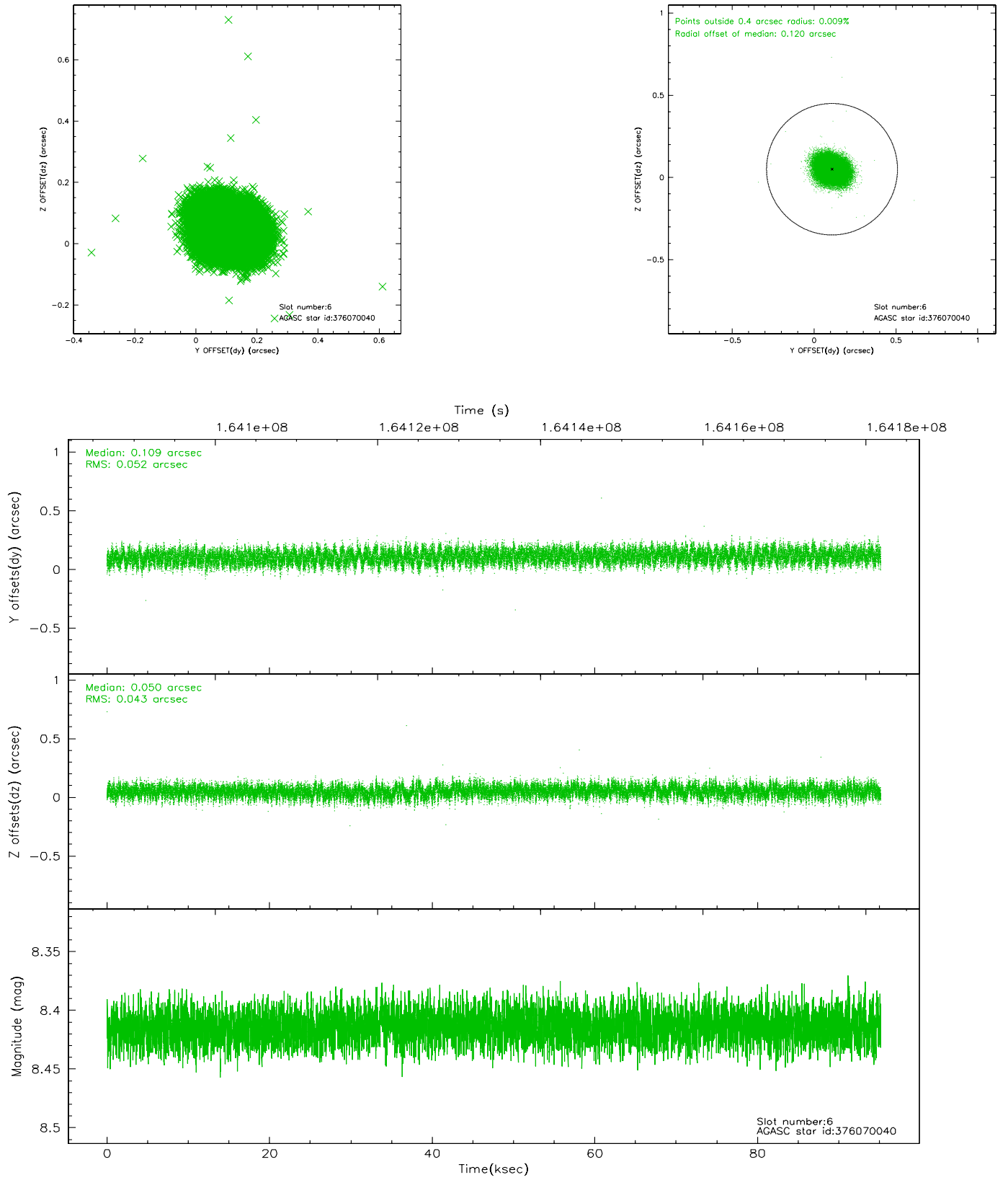
2.4.2 Slot 4



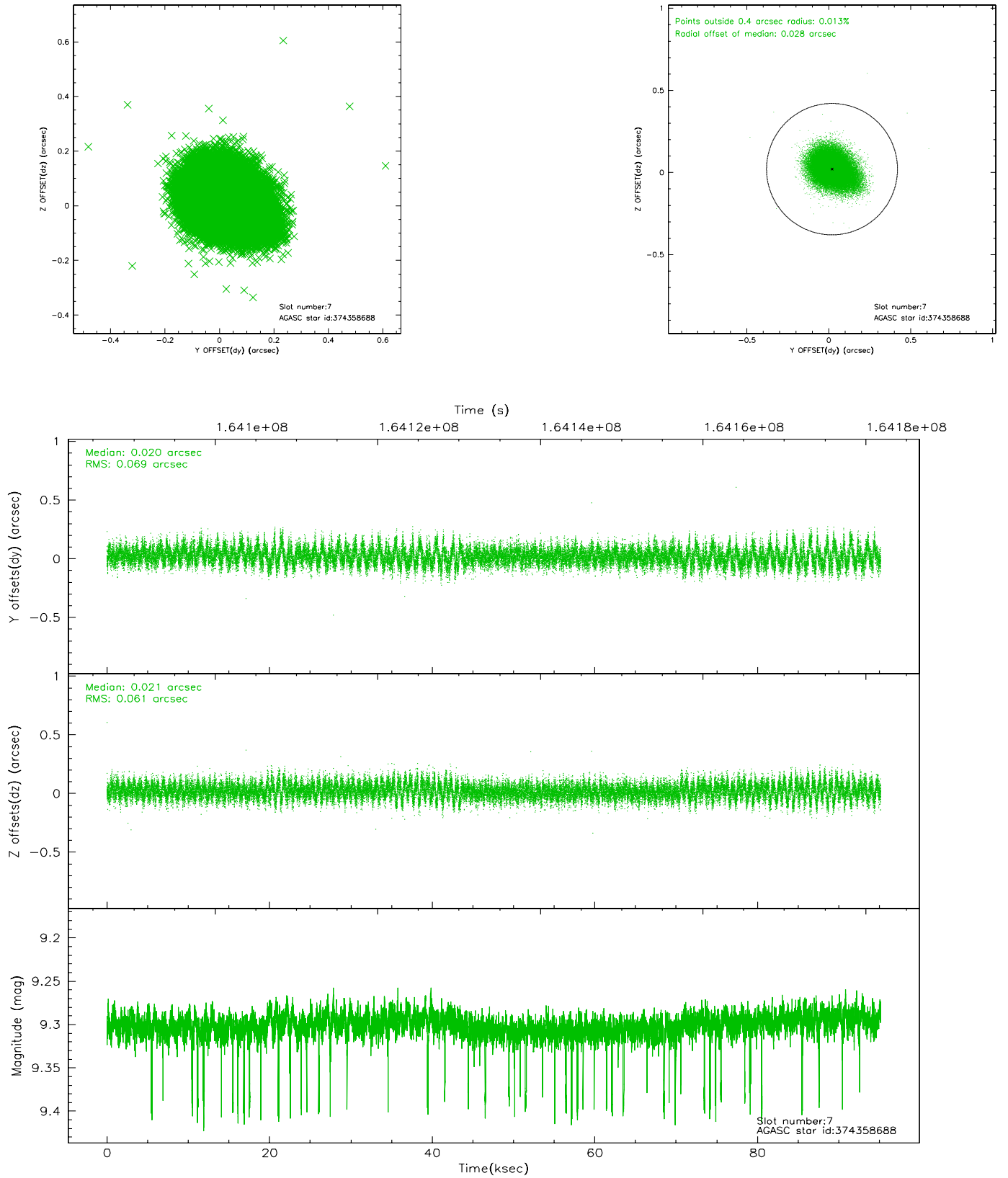
2.4.3 Slot 5



2.4.4 Slot 6

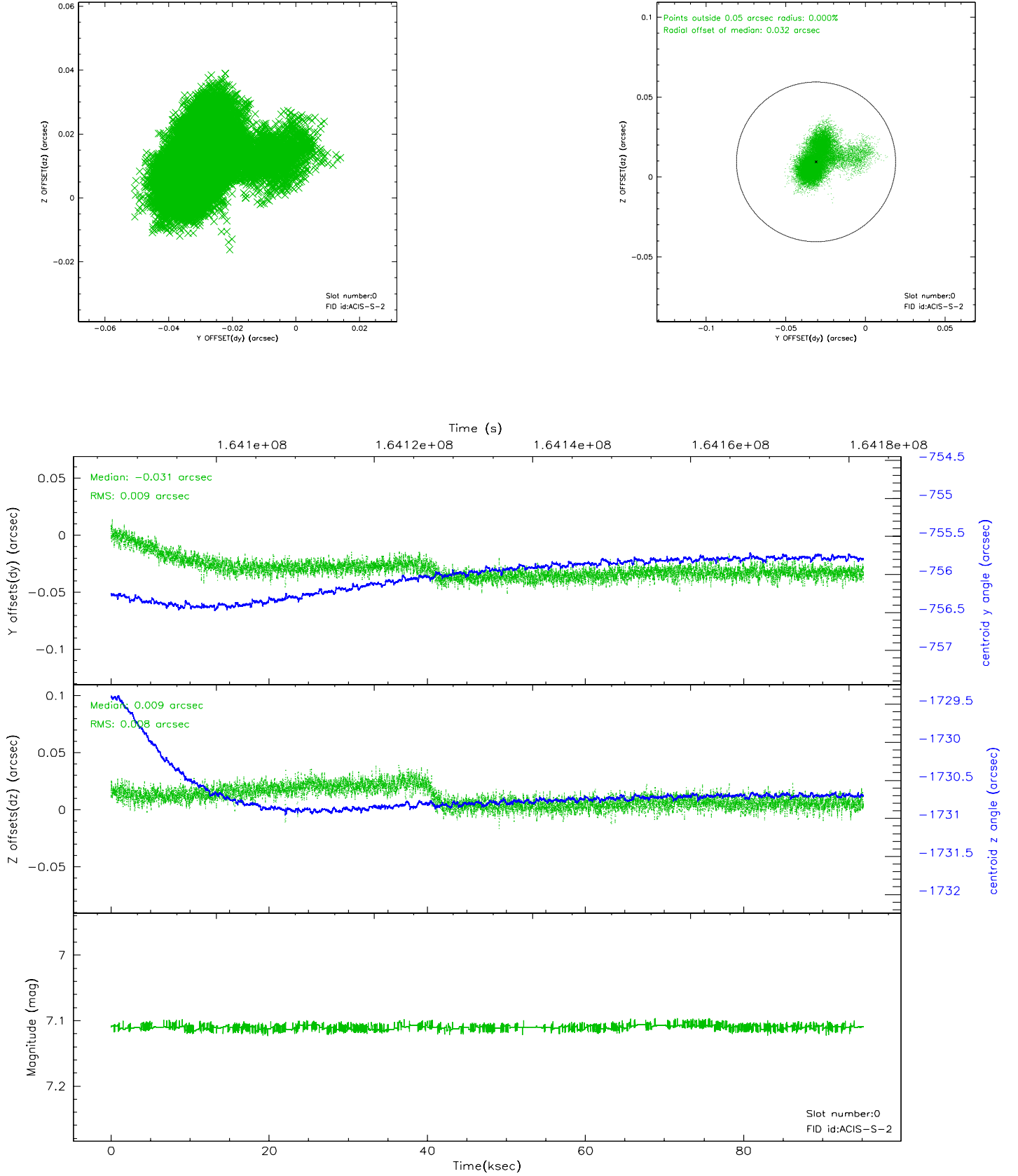


2.4.5 Slot 7

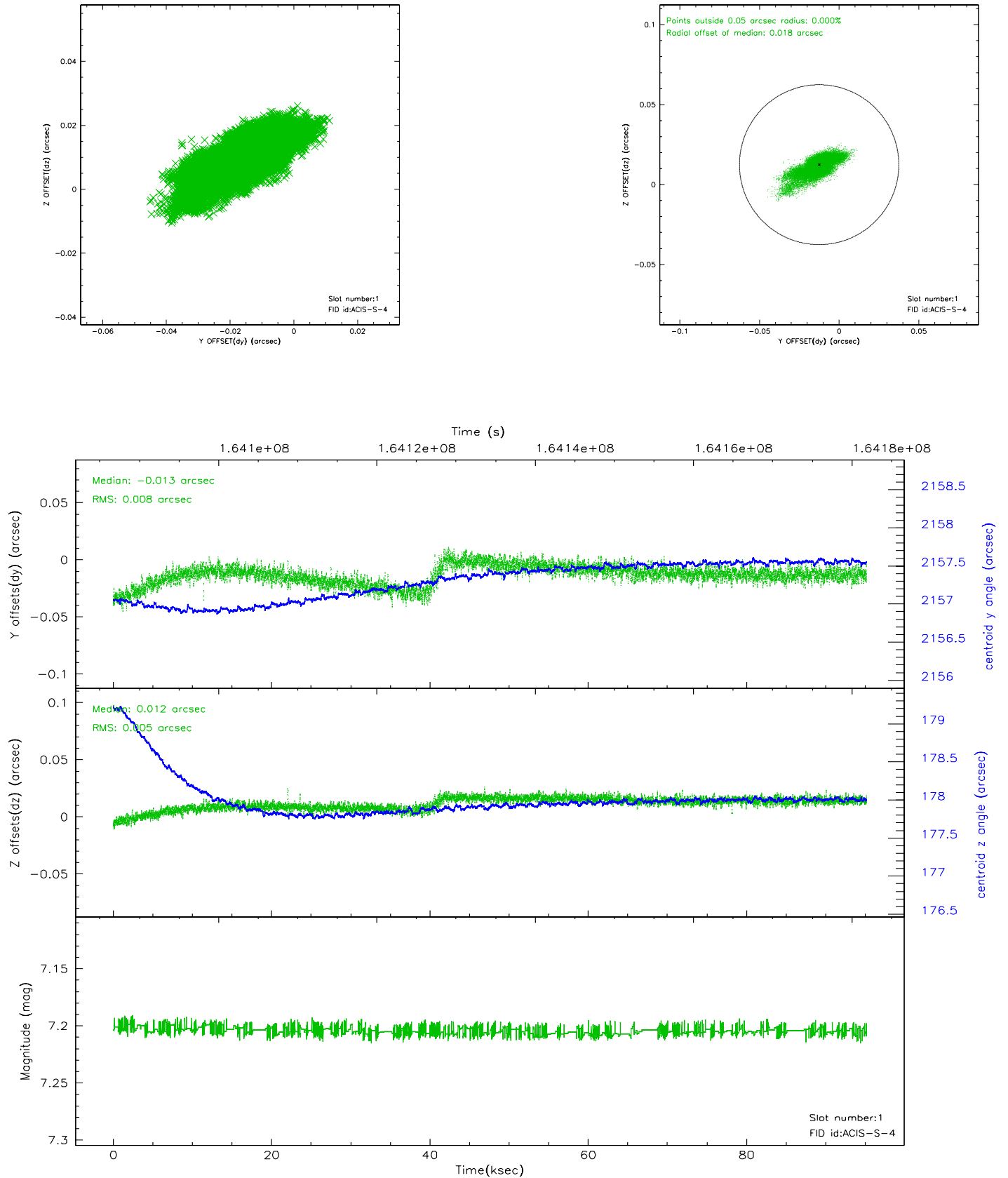


2.5 FID Slots

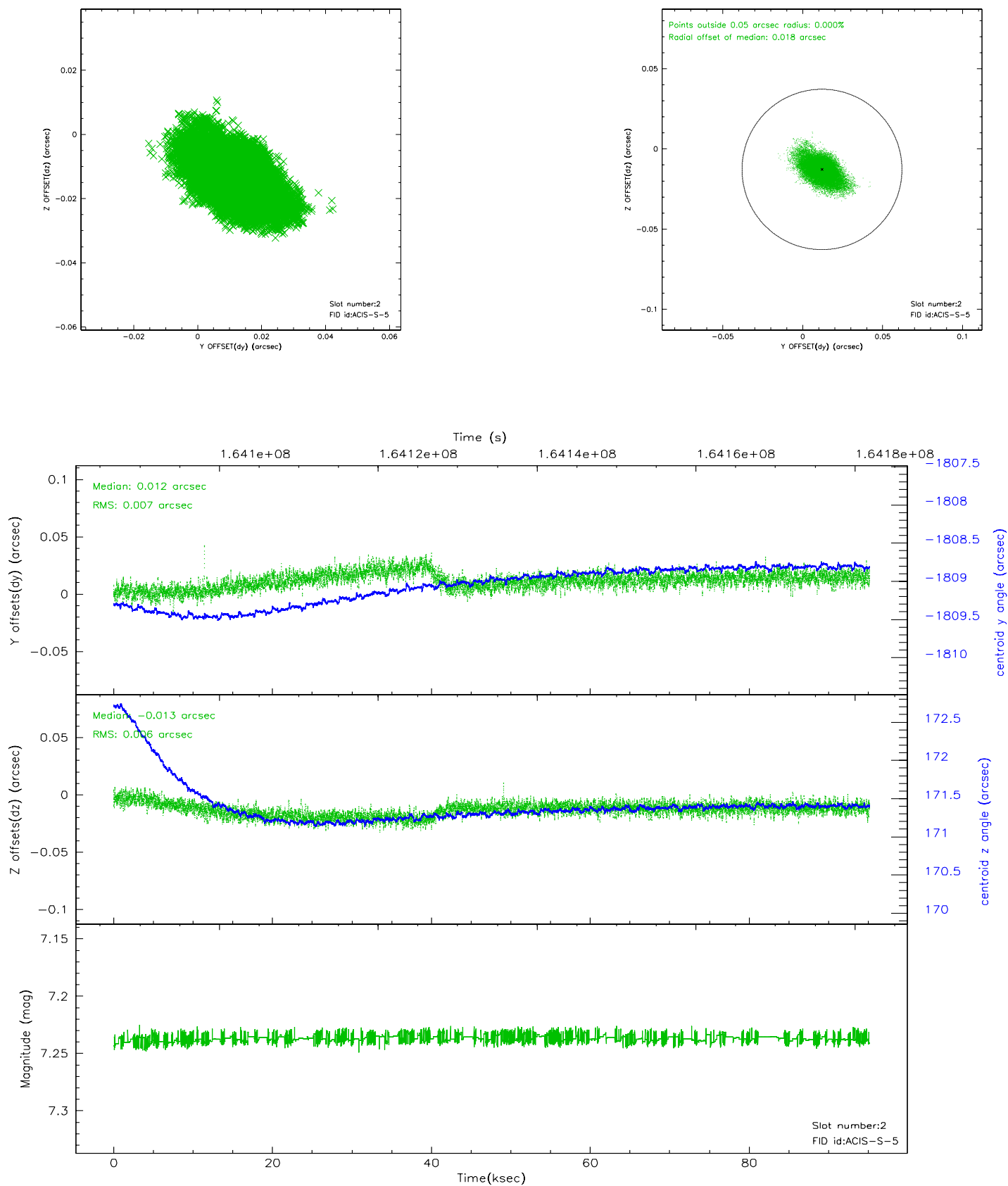
2.5.1 Slot 0



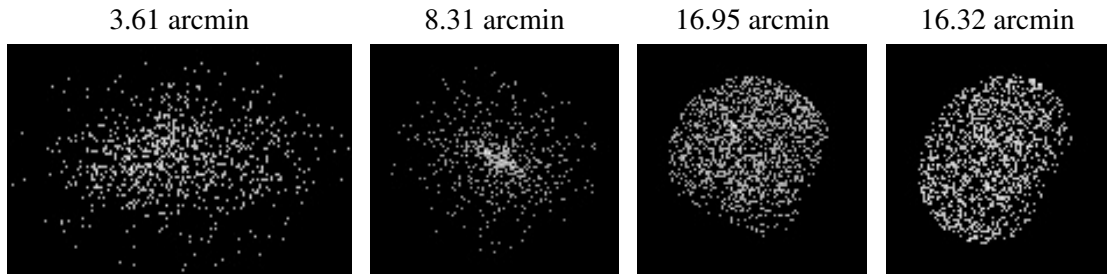
2.5.2 Slot 1



2.5.3 Slot 2



3 Point Sources



A Summary

A.1 Status

V&V Scientist	Beth Sundheim
V&V Date (YYYY-MM-DD)	2006.07.25
V&V Edition	1
V&V Disposition and Status	OK
V&V Charge Time	95.135

A.2 Comments