

V&V Reference Report

L2 ASCDS Version : 7.6.9

Observation 3230 - L2 Version 001
Chandra X-Ray Center

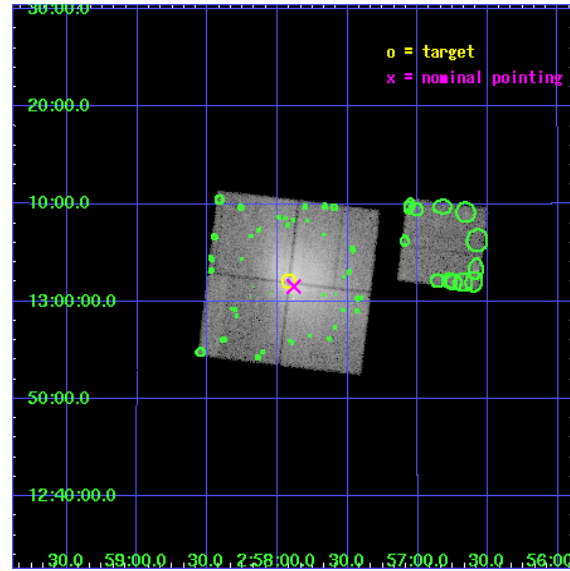
L2 Processing Date : Oct 7 2006

Contents

1	Front	2
2	OBI	3
2.1	OBI	3
2.1.1	Images	3
2.1.2	Bias	3
2.1.3	Parameters	4
2.1.4	Events	4
2.2	Compared Parameters	5
2.3	Aspect	6
2.4	Star Slots	9
2.4.1	Slot 3	9
2.4.2	Slot 4	10
2.4.3	Slot 5	11
2.4.4	Slot 6	12
2.4.5	Slot 7	13
2.5	FID Slots	14
2.5.1	Slot 0	14
2.5.2	Slot 1	15
2.5.3	Slot 2	16
3	Point Sources	17
A	Summary	18
A.1	Status	18
A.2	Comments	18

1 Front

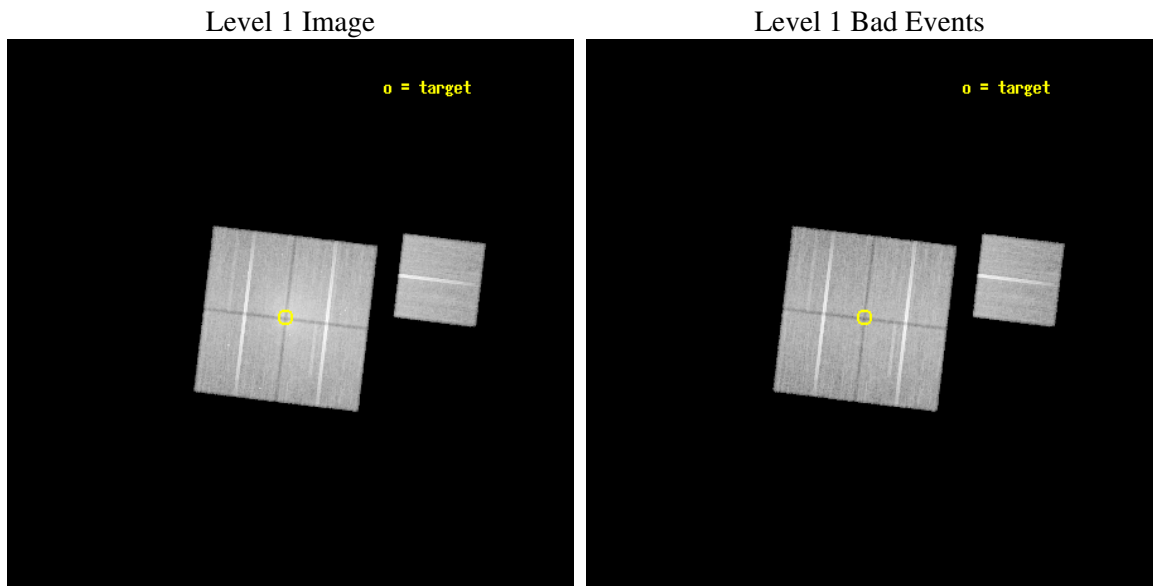
seq_num	800230
obs_id	3230
title	A STUDY OF MERGER SIGNATURES IN NEARBY GALAXY CLUSTERS: CONSTRAINTS ON ICM PHYSICS AND STRUCTURE FORMATION SCENARIOS
observer	DR. JOSEPH MOHR
object	ABELL 399
dtcycle	0
cycle	P
ra_targ	44.48
dec_targ	13.034444
ra_nom	44.470815771584
dec_nom	13.025992012249
roll_nom	96.850435032059
revision	2
ontime	49274.458915114
livetime	48630.65183406
ontime0	49274.458915114
ontime1	49274.458905131
ontime2	49274.458925009
ontime3	49258.754143387
ontime6	49274.459024608
l2events	255146



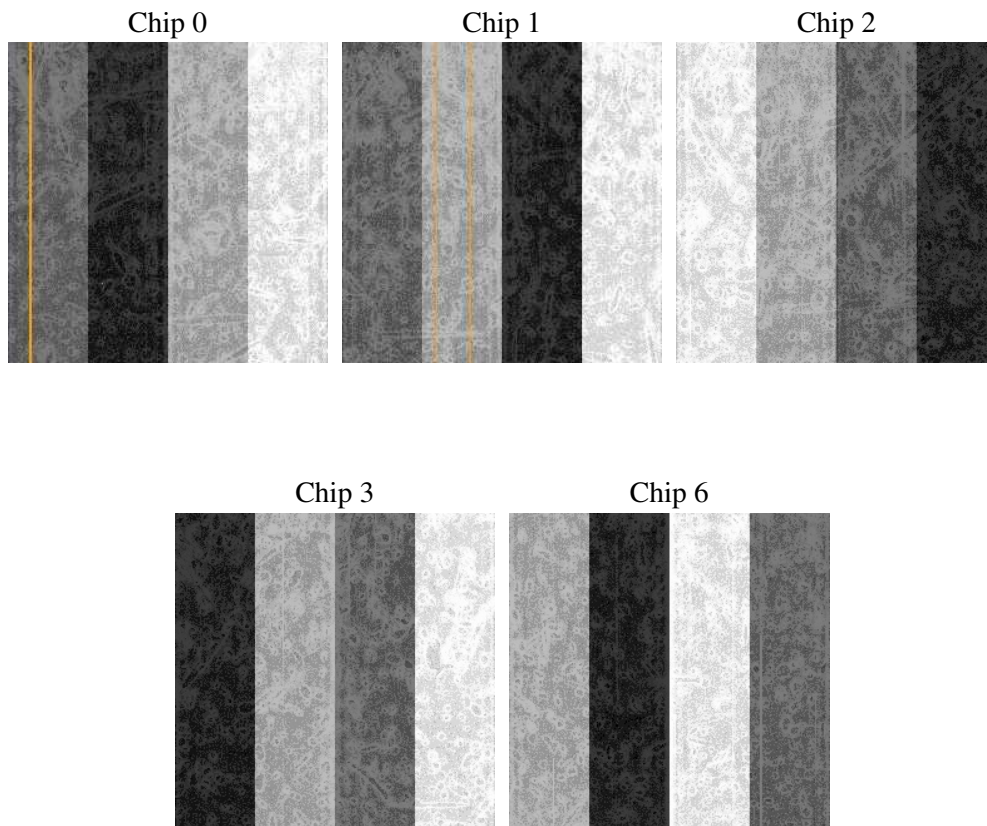
2 OBI

2.1 OBI

2.1.1 Images



2.1.2 Bias



2.1.3 Parameters

obi_num	0
ascdsver	7.6.9
caldbver	3.2.3
date	2006-10-07T10:55:42
revision	2

sched_exp_time	49500.000000
ontime	49279.285425216
ontime0	49279.285425216
ontime1	49279.285415232
ontime2	49279.28543511
ontime3	49263.580653489
ontime6	49279.28553471
l1events	1481075

2.1.4 Events

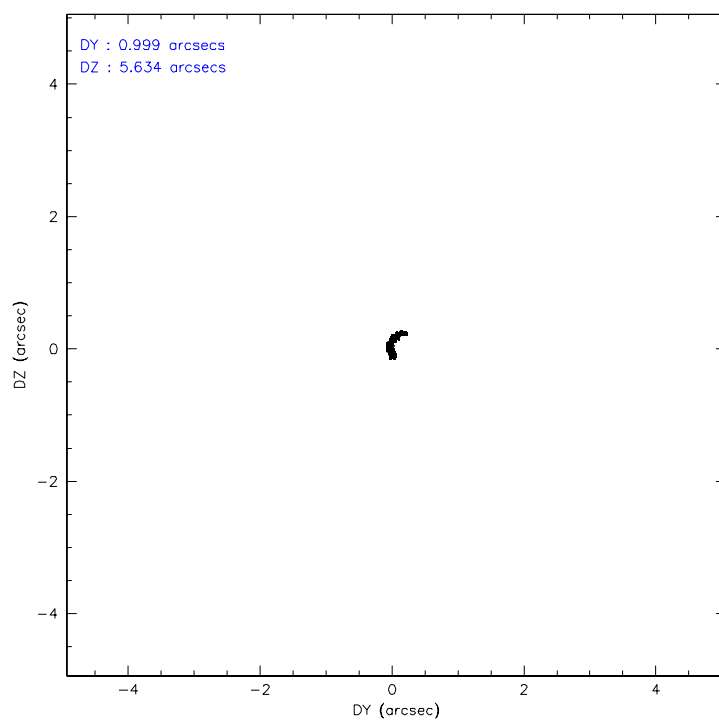
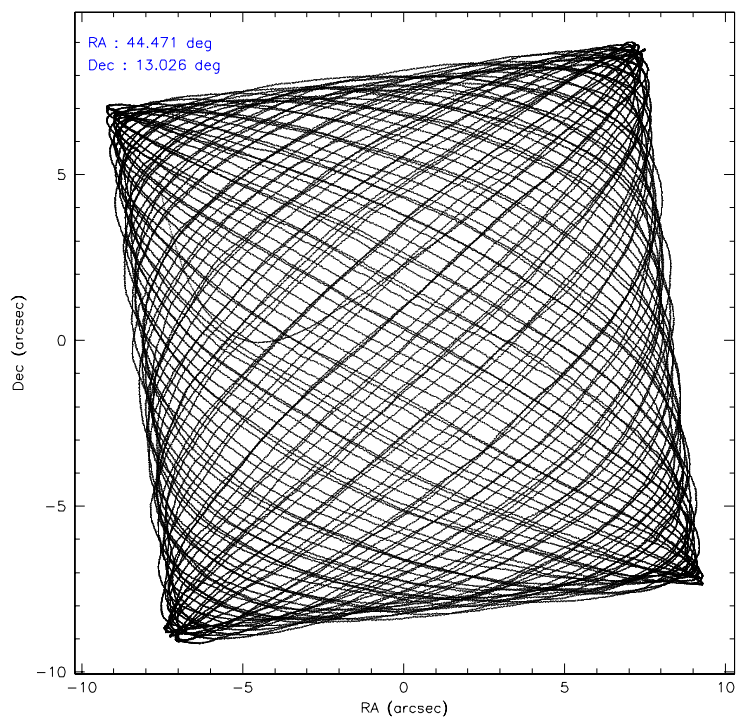
	ccd 0	ccd 1	ccd 2	ccd 3	ccd 6
level 1 events	284543	269536	342994	315239	268763
rejected events	220919	224128	258994	247784	240318
rejected %	77%	83%	75%	78%	89%

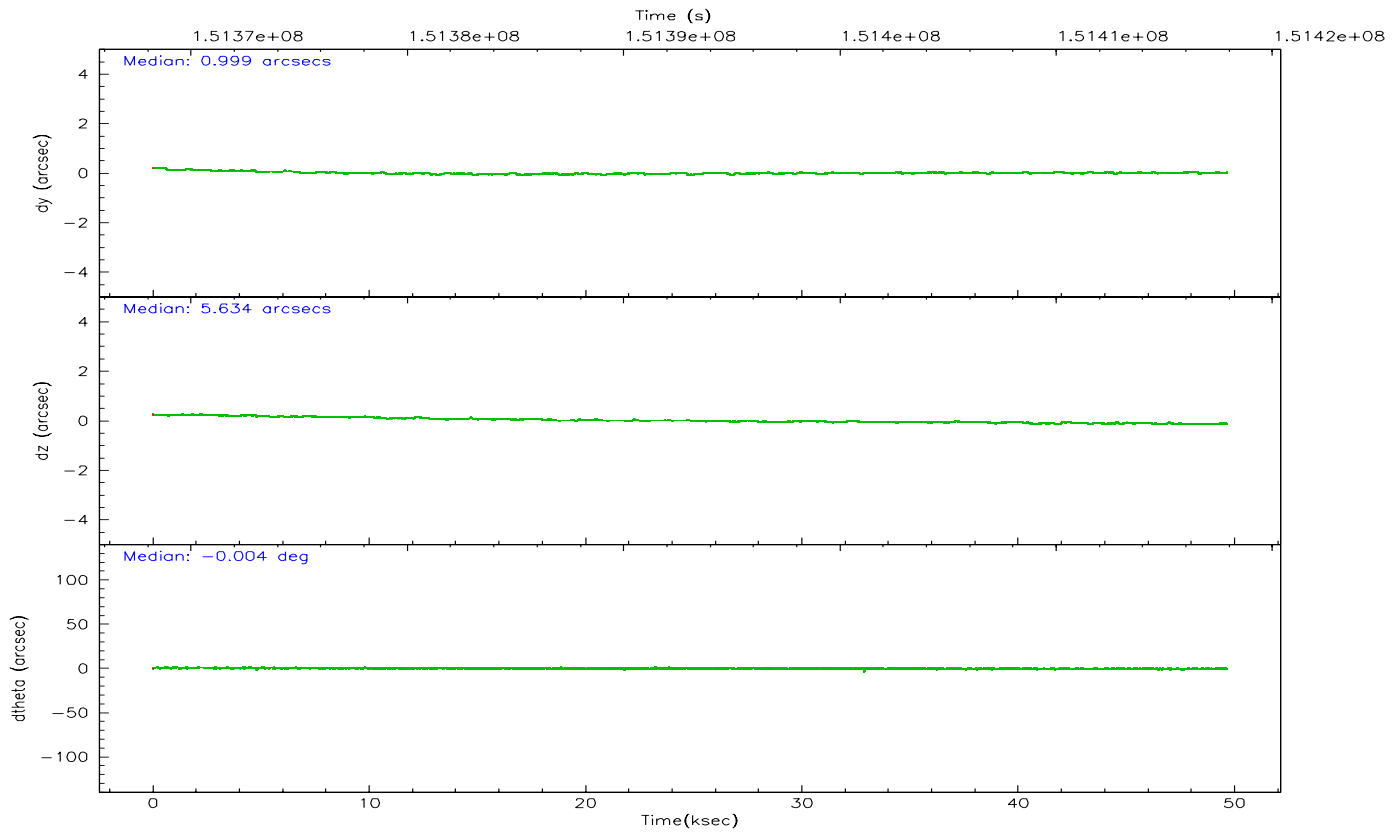
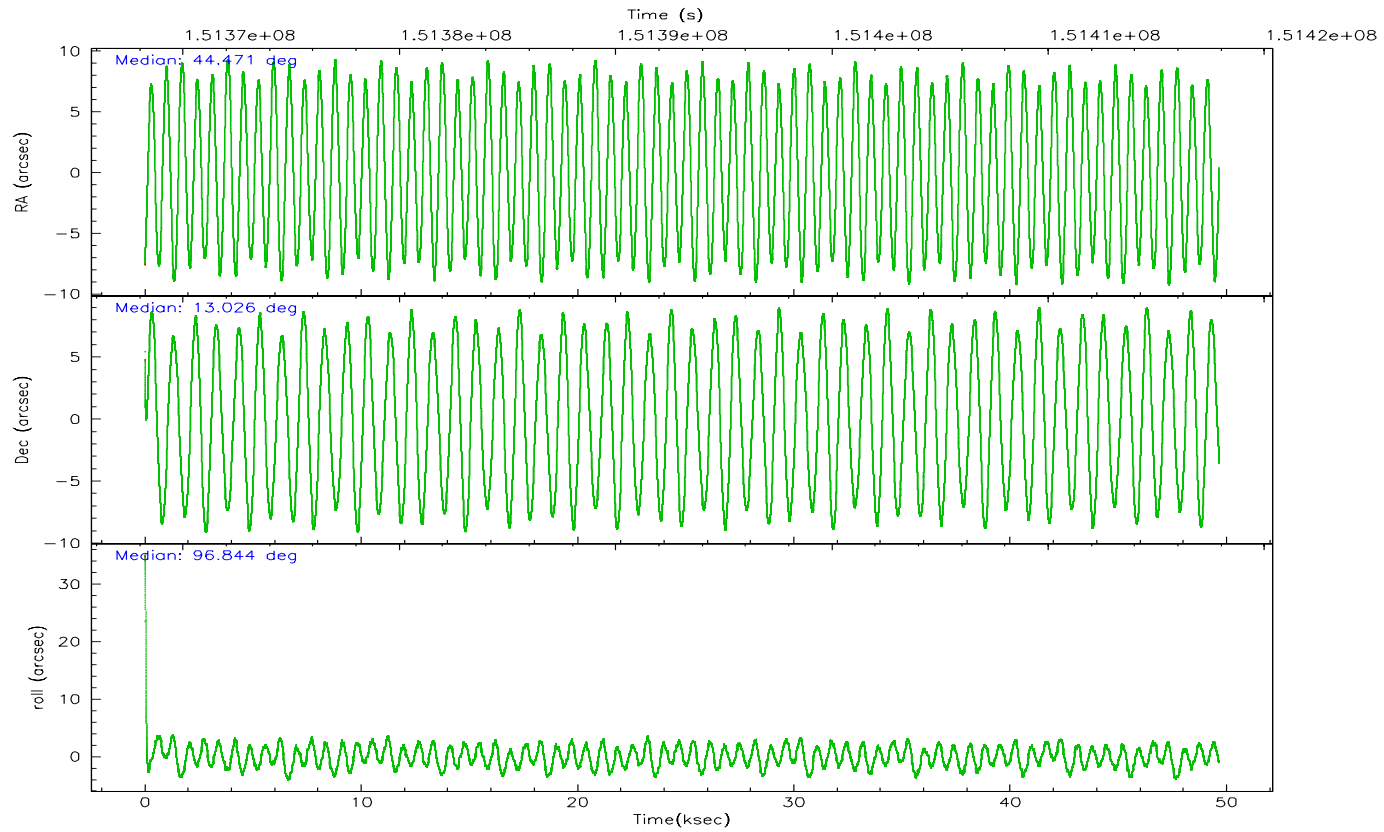
	ccd 0	ccd 1	ccd 2	ccd 3	ccd 6
grade 0 events	39385	23585	56692	43768	10843
	13%	8%	16%	13%	4%
grade 1 events	264	163	384	298	116
	0%	0%	0%	0%	0%
grade 2 events	10073	7953	11785	9371	5925
	3%	2%	3%	2%	2%
grade 3 events	4255	3919	4624	4210	3100
	1%	1%	1%	1%	1%
grade 4 events	3981	3687	4869	4226	3054
	1%	1%	1%	1%	1%
grade 5 events	8945	9474	8601	9942	9875
	3%	3%	2%	3%	3%
grade 6 events	5942	6269	6041	5887	5527
	2%	2%	1%	1%	2%
grade 7 events	211698	214486	249998	237537	230323
	74%	79%	72%	75%	85%

2.2 Compared Parameters

Parameter	Planned	Actual	Parameter	Planned	Actual
Instrument	ACIS	ACIS	Obspar format version number	6	6
Detector	ACIS-01236	ACIS-01236	Obspar file type	PREDICTED	ACTUAL
Grating	NONE	NONE	Obspar update status	NONE	UPDATED
Data mode	VFAINT	VFAINT	Number of optional ACIS chips dropped	0	0
Observation mode	POINTING	POINTING	On-chip summing requested	N	N
Pointing RA	44.487758	44.47081577158372	Subarray requested	NONE	NONE
Pointing Dec	13.004116	13.02599201224861	Alternating exposures requested	N	N
Pointing Roll	96.637919	96.85043503205867	Primary exposure time	0.000000	3.1
SIM focus pos (mm)	-0.782348	-0.7809083437167272			
SIM defocus (mm)	0	0.001439871863259334			
SIM translation stage pos (mm)	-233.592463	-233.5874344608287			
SIM translation stage offset (mm)	0	-0.005018542100998502			
Observation start time	151368404.184000	151367047.10072			
Observation start date	2002-10-18T22:45:40	2002-10-18T22:24:07			
Observation end time	151417904.184000	151418820.36537			
Observation end date	2002-10-19T12:30:40	2002-10-19T12:47:00			
Read mode	TIMED	TIMED			

2.3 Aspect



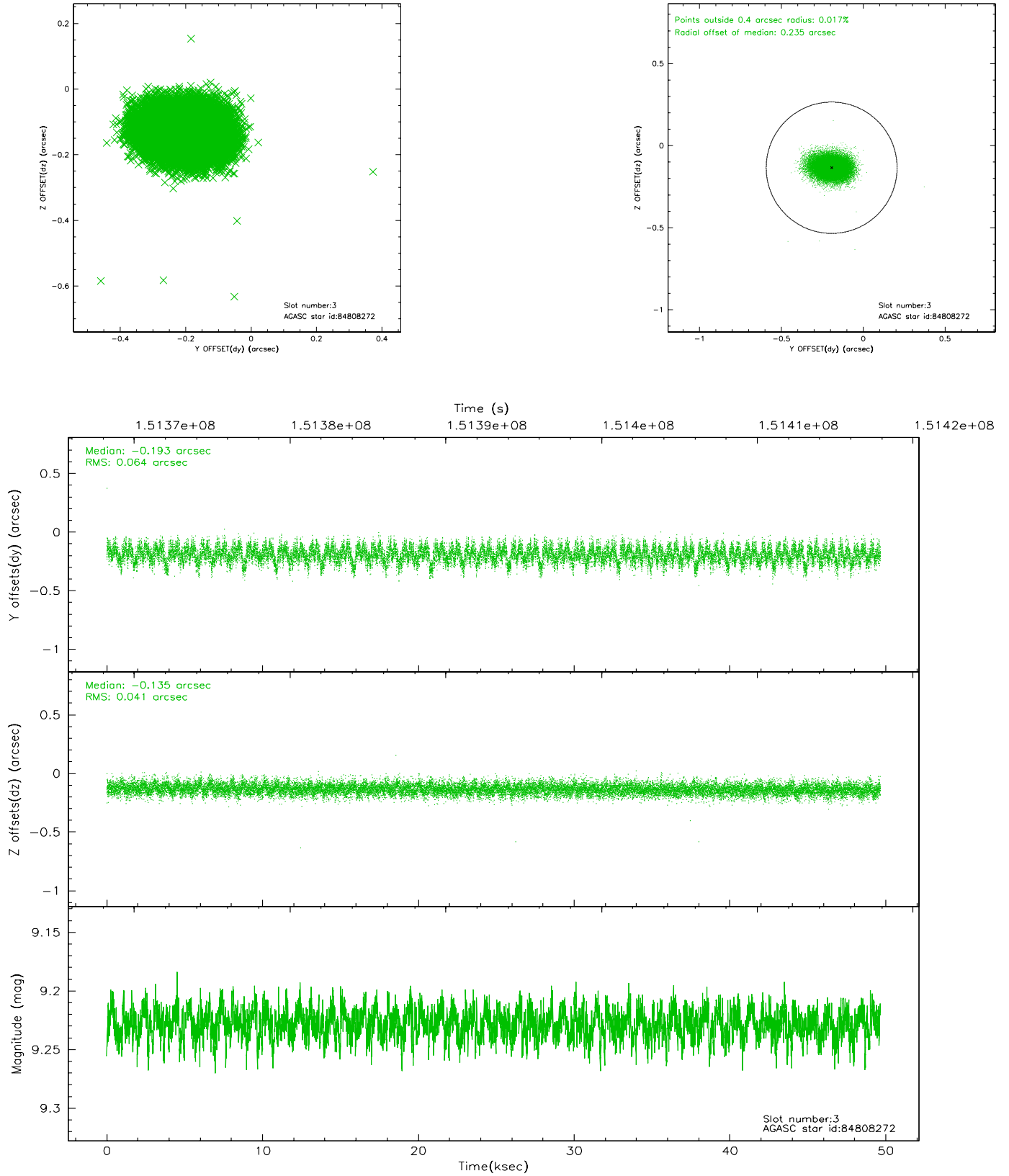


Slot Statistics

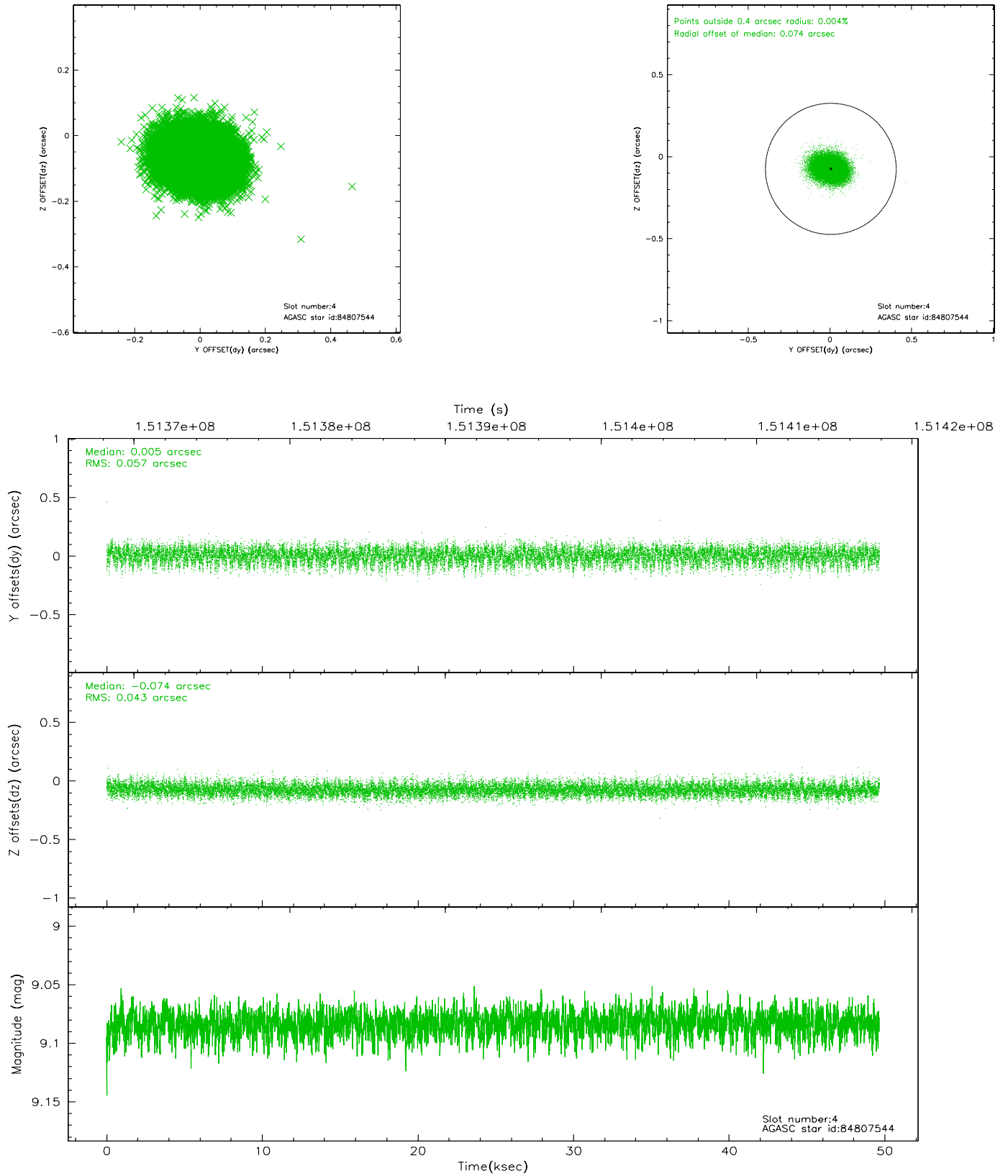
slot	status	id	mag	n_pts	med_dy	med_dz	dr1	dr2	ra	dec	mean_y	mean_z
0	FID	ACIS-I-1	7.25	12112	0.005	-0.017	0.008	0.015	0.000000	0.000000	938.88	-829.00
1	FID	ACIS-I-5	7.24	12111	0.078	0.086	0.007	0.012	0.000000	0.000000	-1809.24	1068.50
2	FID	ACIS-I-6	7.26	12111	-0.174	0.001	0.009	0.014	0.000000	0.000000	404.17	1712.98
3	GUIDE	84808272	9.23	24214	-0.193	-0.135	0.080	0.133	43.784127	13.468595	1948.46	2253.89
4	GUIDE	84807544	9.08	24213	0.005	-0.074	0.076	0.124	43.746788	13.530073	2183.99	2357.66
5	GUIDE	84805616	9.68	24207	0.103	0.036	0.117	0.183	44.861273	12.755618	-1039.20	-1198.86
6	GUIDE	84811016	9.57	24207	0.107	0.039	0.089	0.143	44.617269	12.730142	-1032.41	-337.31
7	GUIDE	84809856	8.16	24218	-0.020	0.134	0.052	0.087	45.191960	12.984820	-351.29	-2445.58

2.4 Star Slots

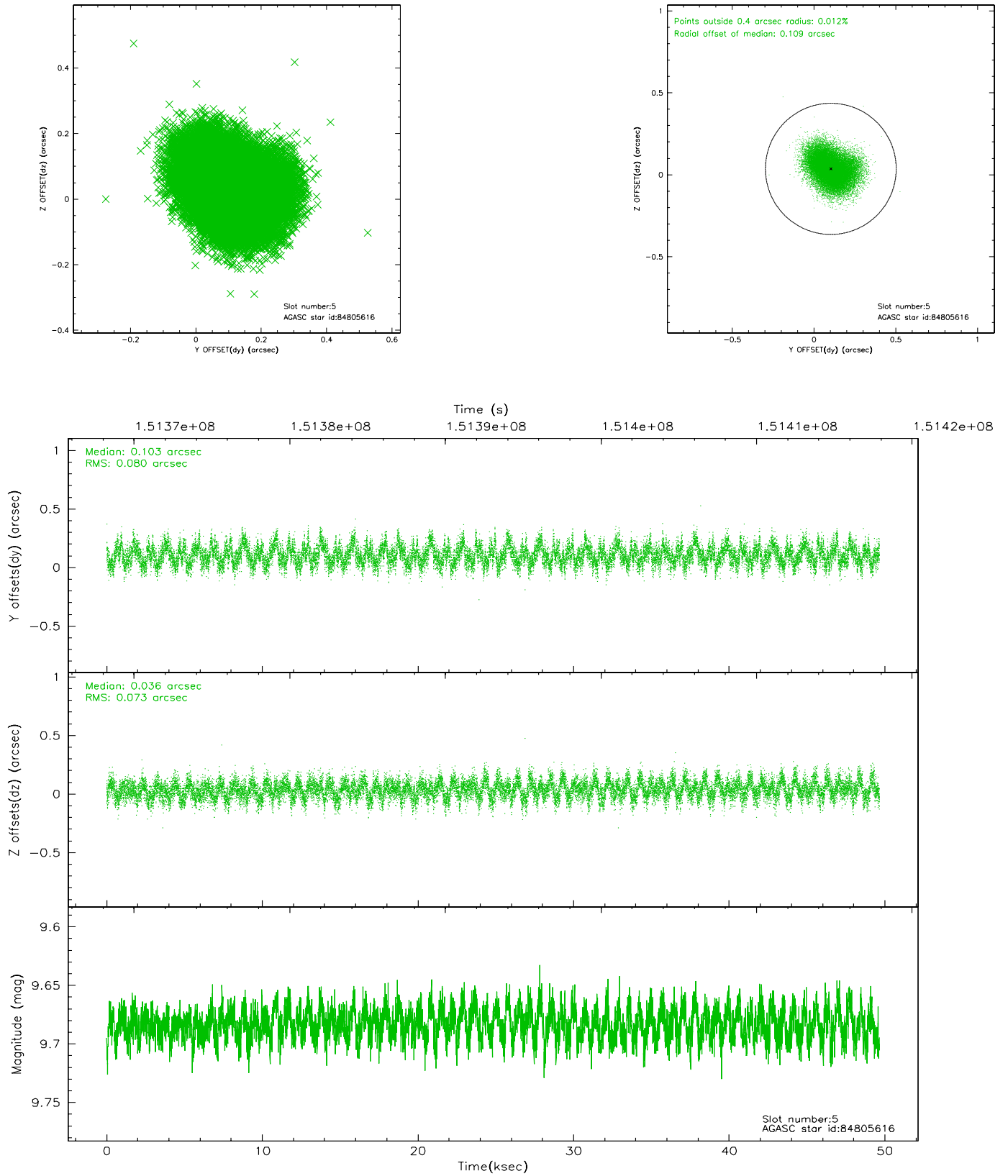
2.4.1 Slot 3



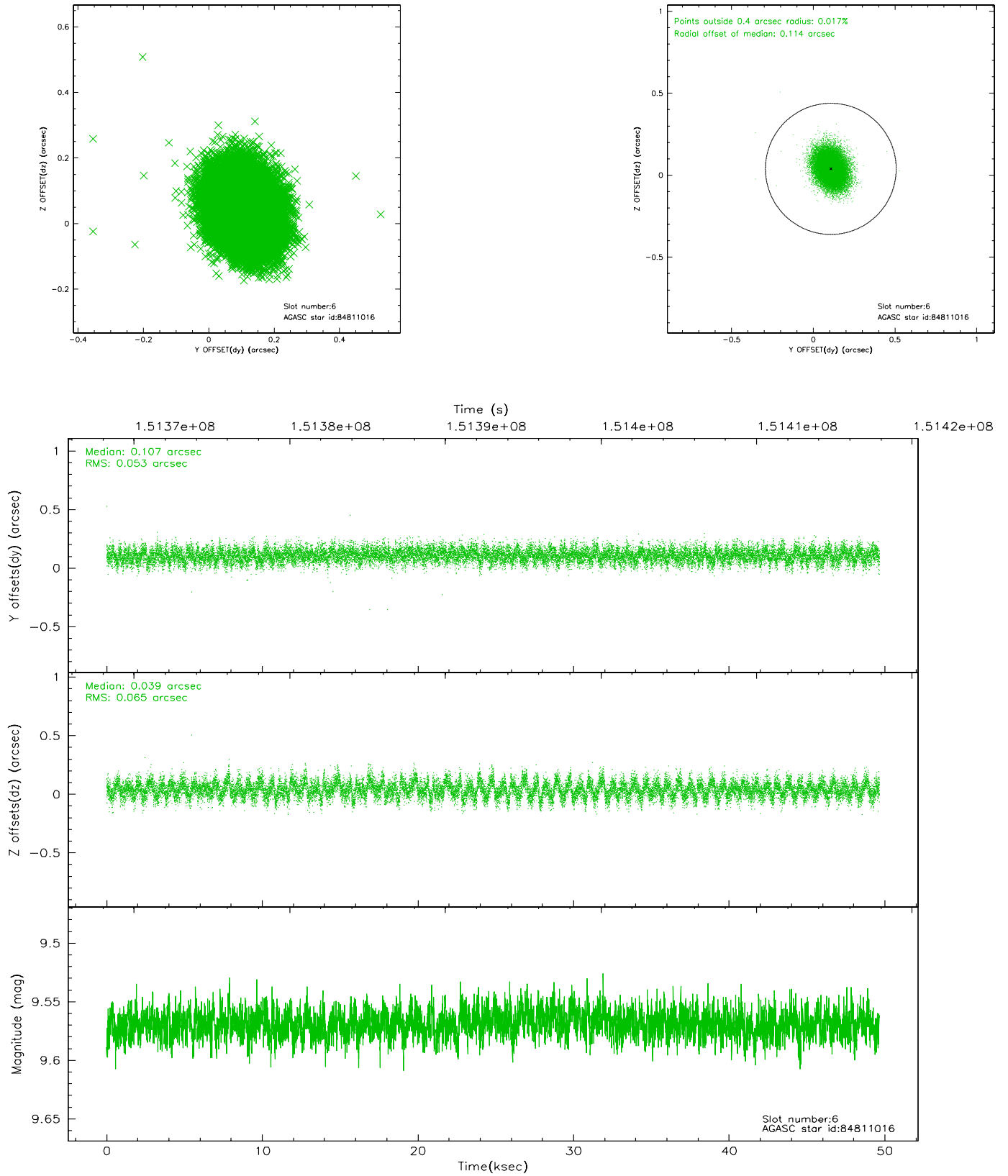
2.4.2 Slot 4



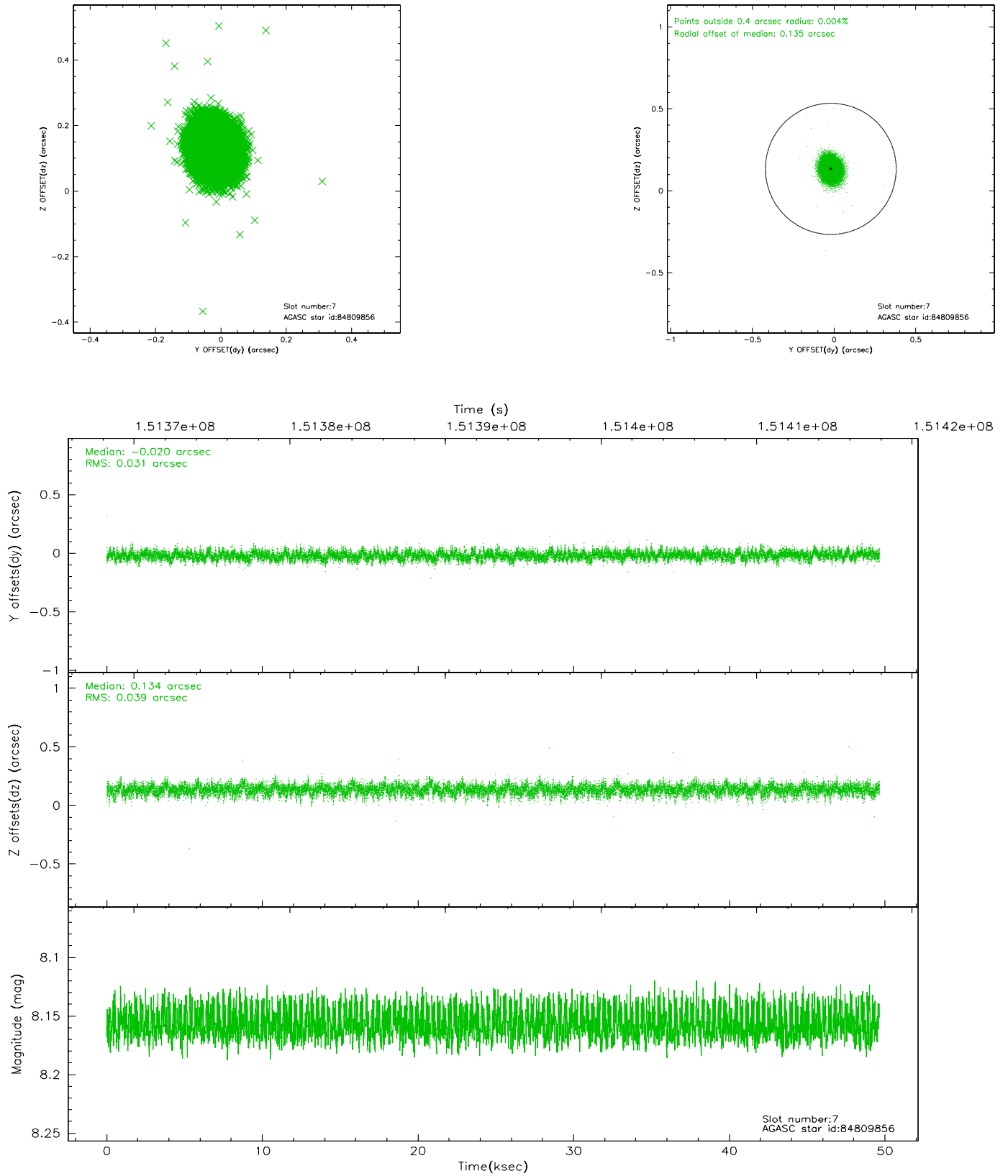
2.4.3 Slot 5



2.4.4 Slot 6

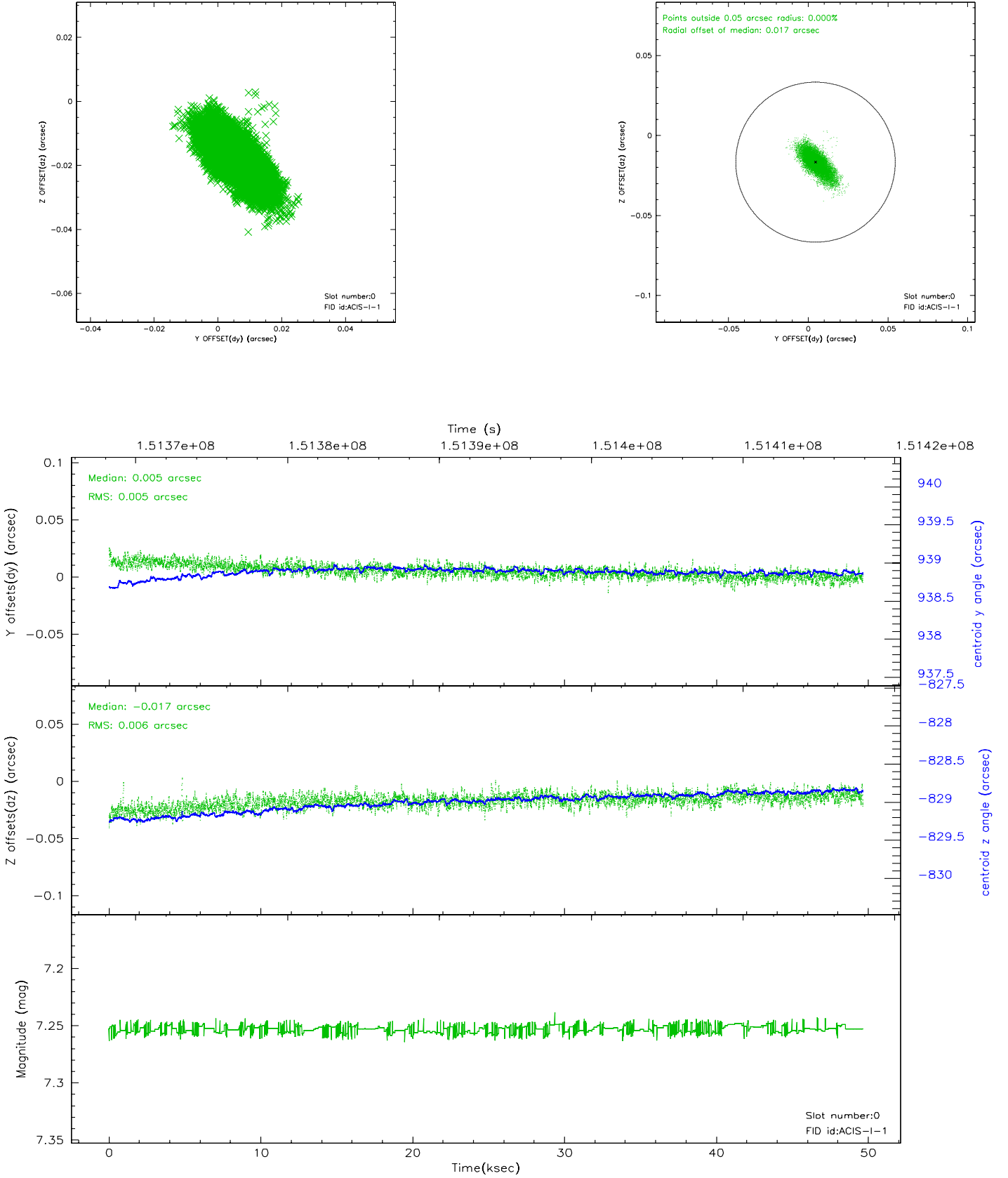


2.4.5 Slot 7

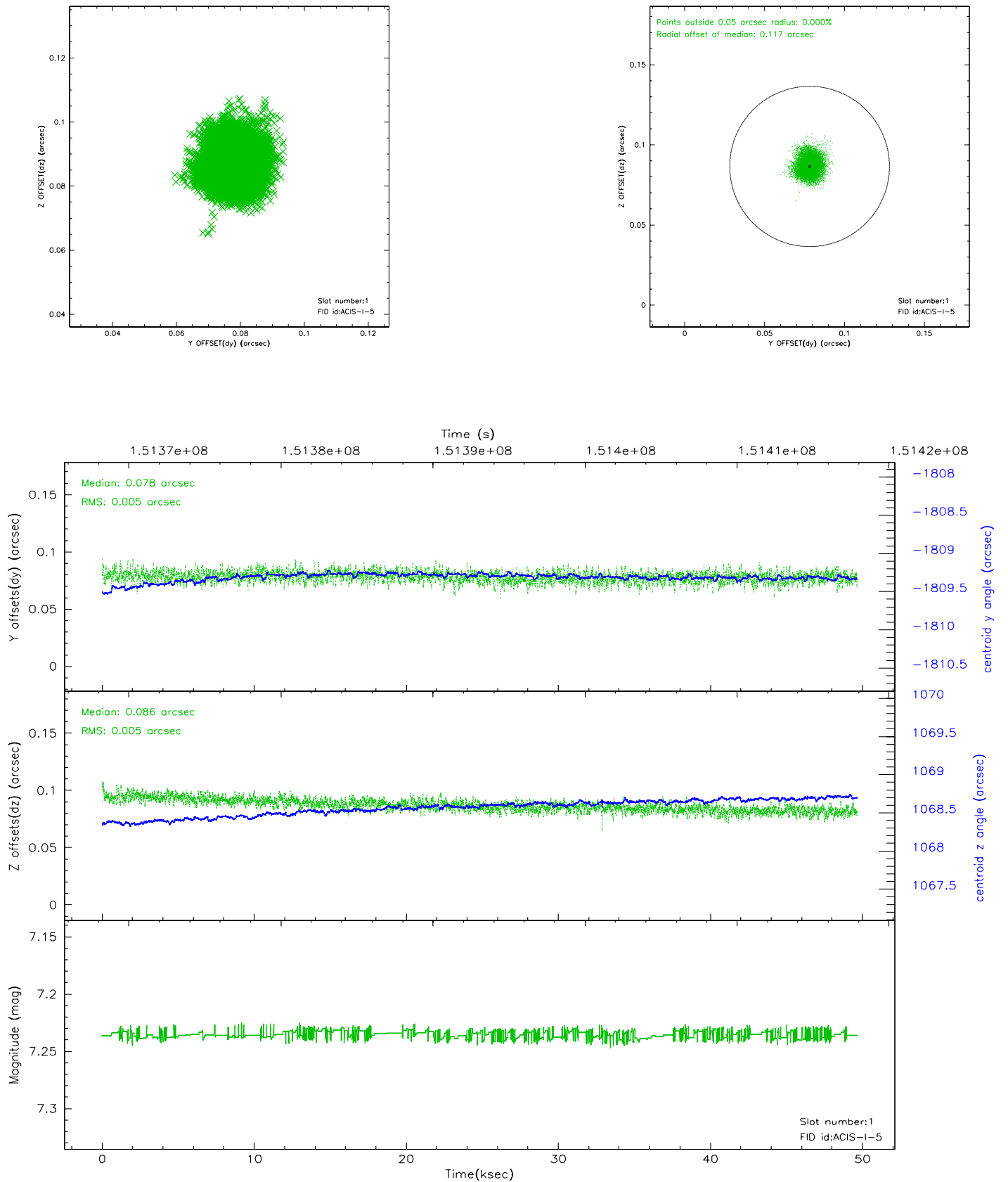


2.5 FID Slots

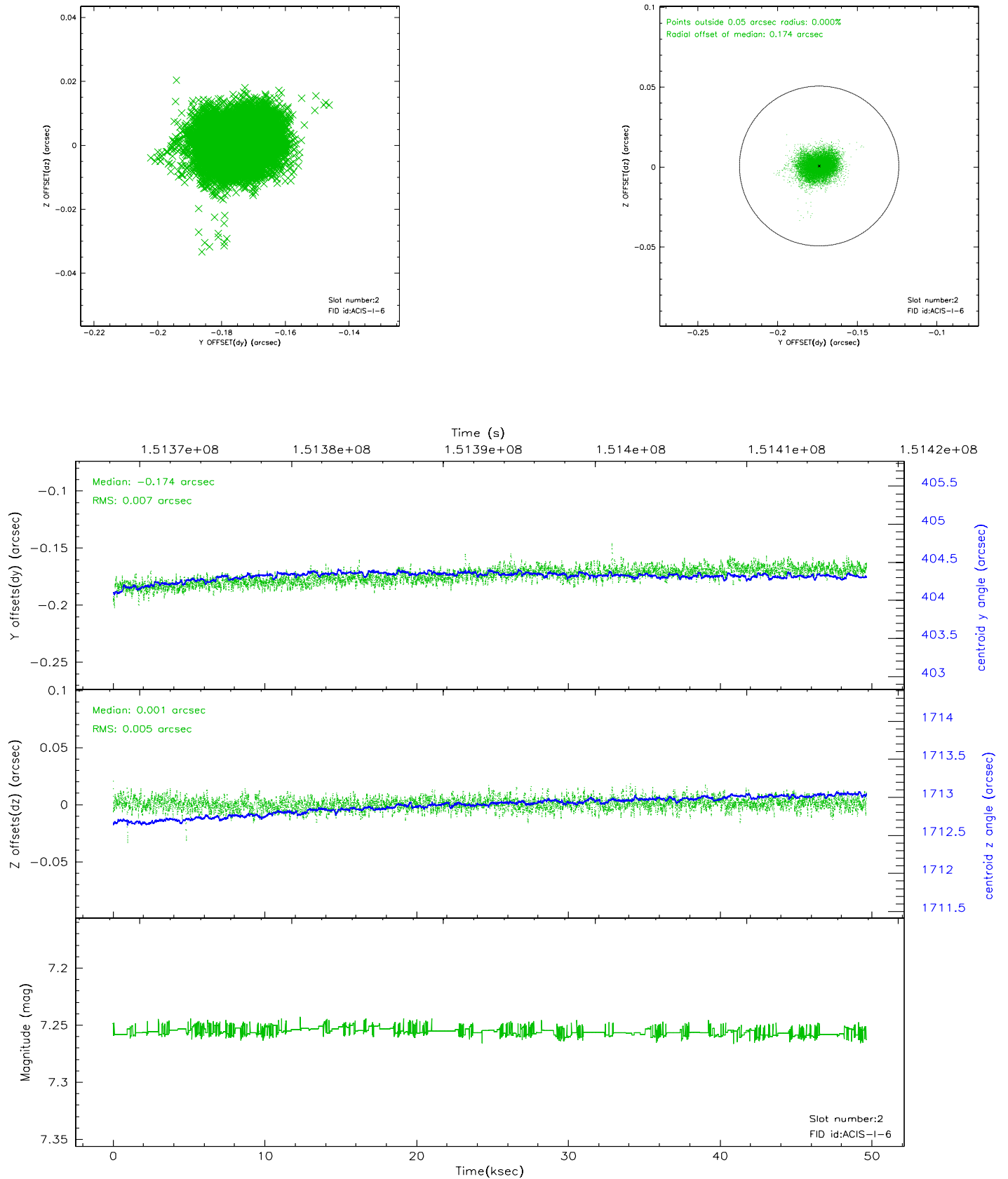
2.5.1 Slot 0



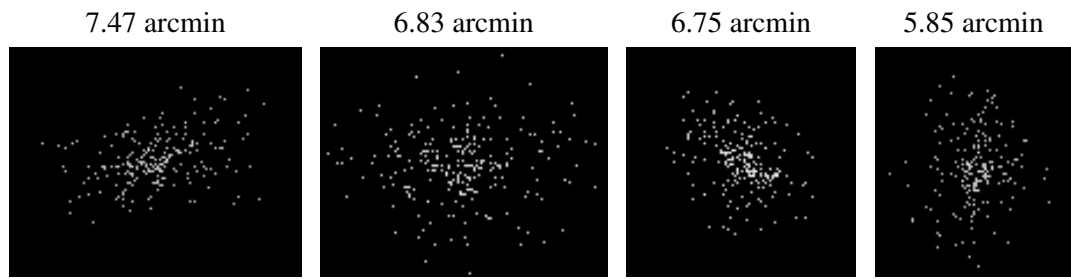
2.5.2 Slot 1



2.5.3 Slot 2



3 Point Sources



A Summary

A.1 Status

V&V Scientist	Jen Lauer
V&V Date (YYYY-MM-DD)	2006.10.08
V&V Edition	1
V&V Disposition and Status	OK
V&V Charge Time	49.277

A.2 Comments