

V&V Reference Report

L2 ASCDS Version : 7.6.8.1

Observation 3227 - L2 Version 001
Chandra X-Ray Center

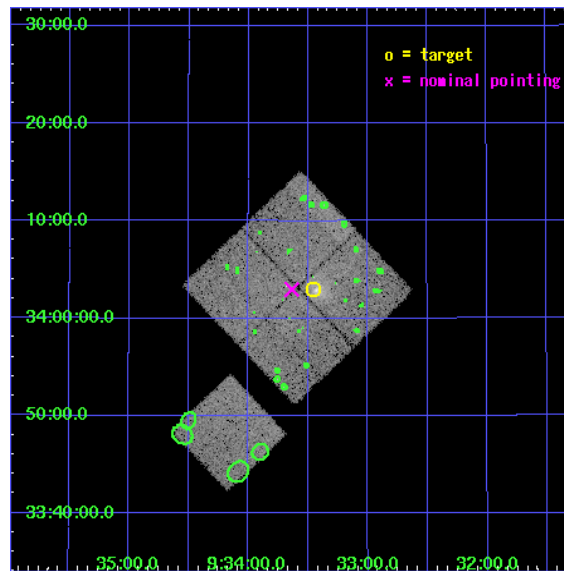
L2 Processing Date : Sep 6 2006

Contents

1	Front	2
2	OBI	3
2.1	OBI	3
2.1.1	Images	3
2.1.2	Bias	3
2.1.3	Parameters	4
2.1.4	Events	4
2.2	Compared Parameters	5
2.3	Aspect	6
2.4	Star Slots	9
2.4.1	Slot 3	9
2.4.2	Slot 4	10
2.4.3	Slot 5	11
2.4.4	Slot 6	12
2.4.5	Slot 7	13
2.5	FID Slots	14
2.5.1	Slot 0	14
2.5.2	Slot 1	15
2.5.3	Slot 2	16
3	Point Sources	17
A	Summary	18
A.1	Status	18
A.2	Comments	18

1 Front

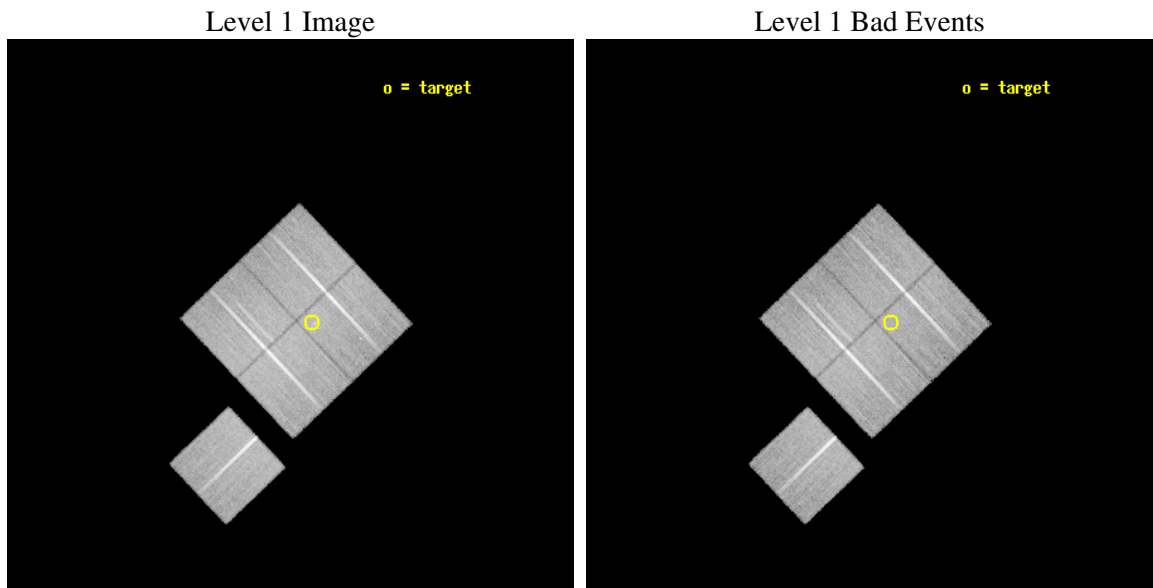
seq_num	800227
obs_id	3227
title	A SEARCH FOR SMALL-SCALE STRUCTURE IN THE RASSCALS GALAXY GROUPS
observer	DR. MARGARET GELLER
object	NRGB045
dtcycle	0
cycle	P
ra_targ	143.362917
dec_targ	34.050556
ra_nom	143.40894176489
dec_nom	34.049630363914
roll_nom	226.46965693631
revision	2
ontime	34775.799933136
livetime	34321.428505438
ontime0	34775.799933136
ontime1	34772.658913046
ontime2	34766.376992464
ontime3	34769.517962694
ontime6	34772.658942968
l2events	85185



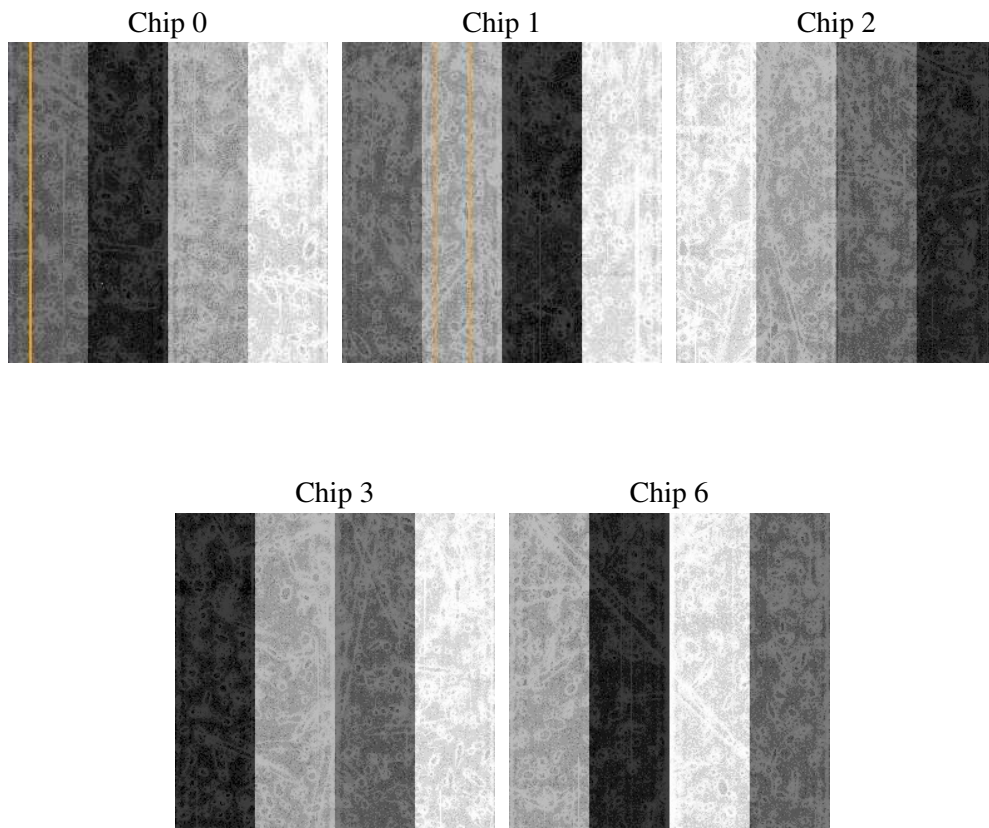
2 OBI

2.1 OBI

2.1.1 Images



2.1.2 Bias



2.1.3 Parameters

obi_num	1
ascdsver	7.6.8.1
caldsver	3.2.3
date	2006-09-06T14:12:04
revision	2

sched_exp_time	35000.000000
ontime	34780.358417526
ontime0	34780.358417526
ontime1	34777.217397436
ontime2	34770.935446933
ontime3	34774.076417163
ontime6	34777.217427358
l1events	998339

2.1.4 Events

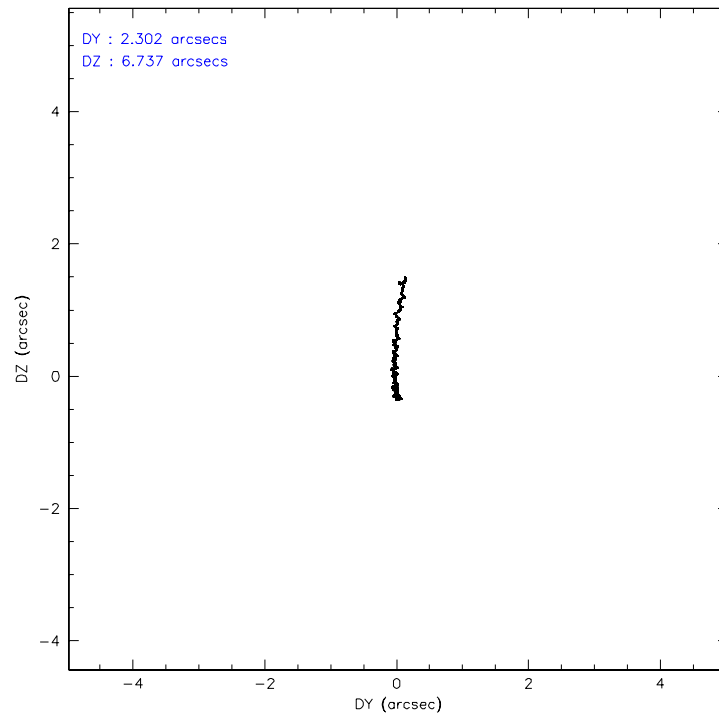
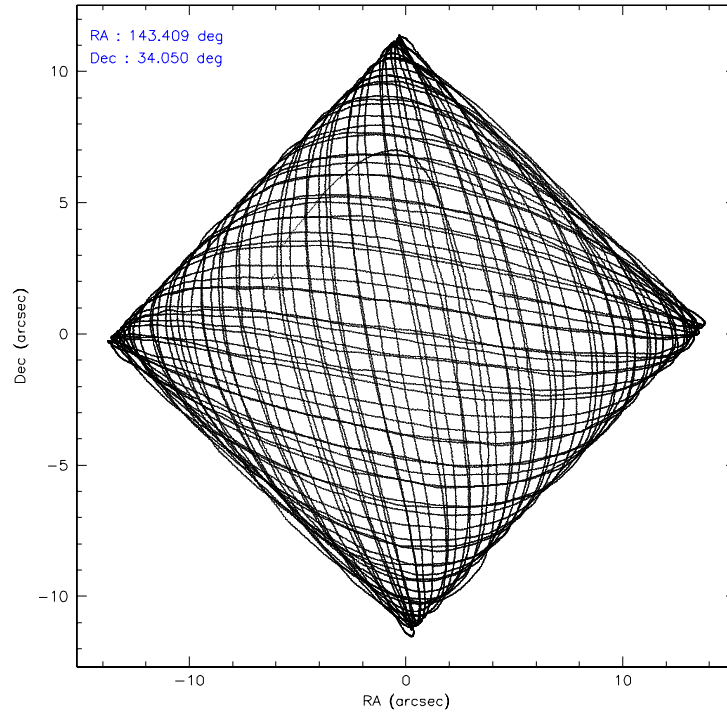
	ccd 0	ccd 1	ccd 2	ccd 3	ccd 6
level 1 events	192051	188830	212725	203342	201391
rejected events	169227	167170	192803	184551	181852
rejected %	88%	88%	90%	90%	90%

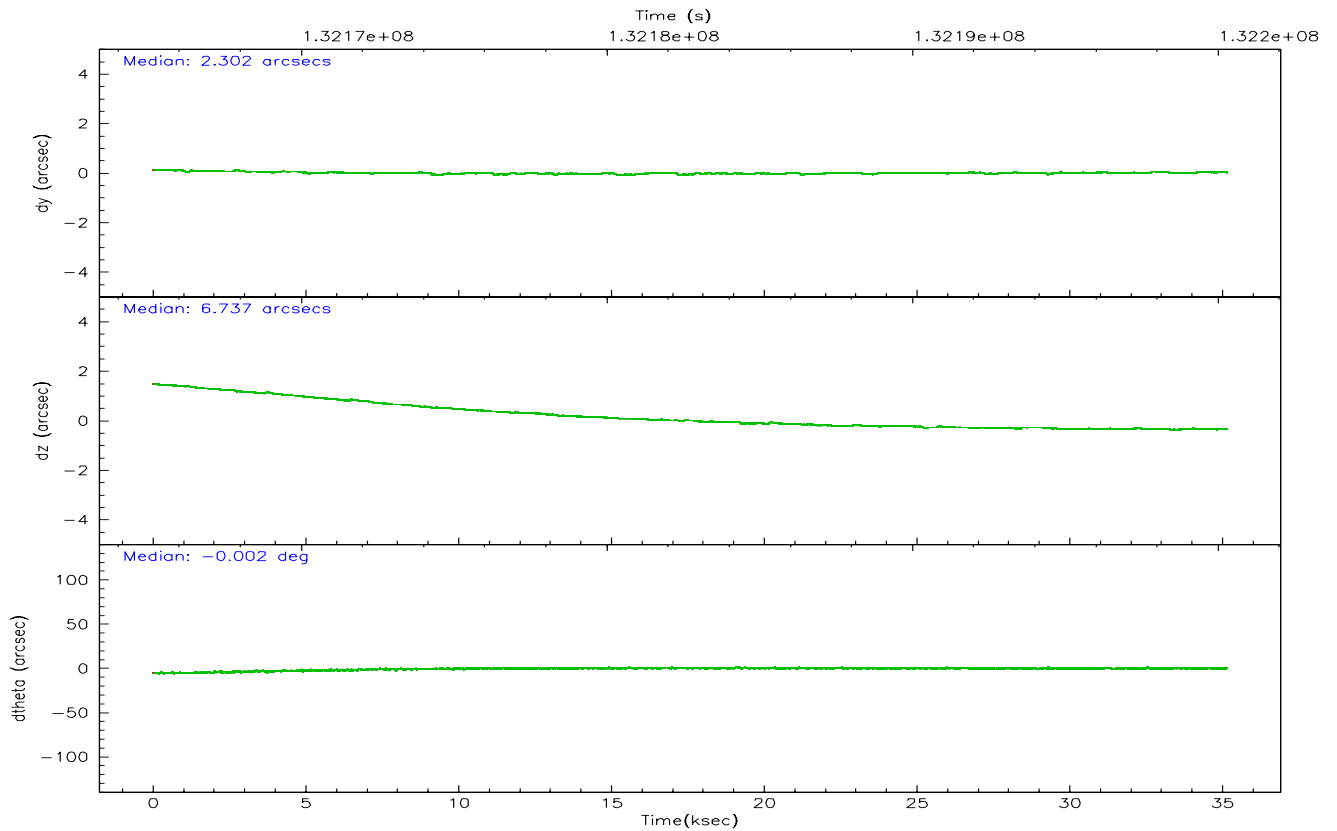
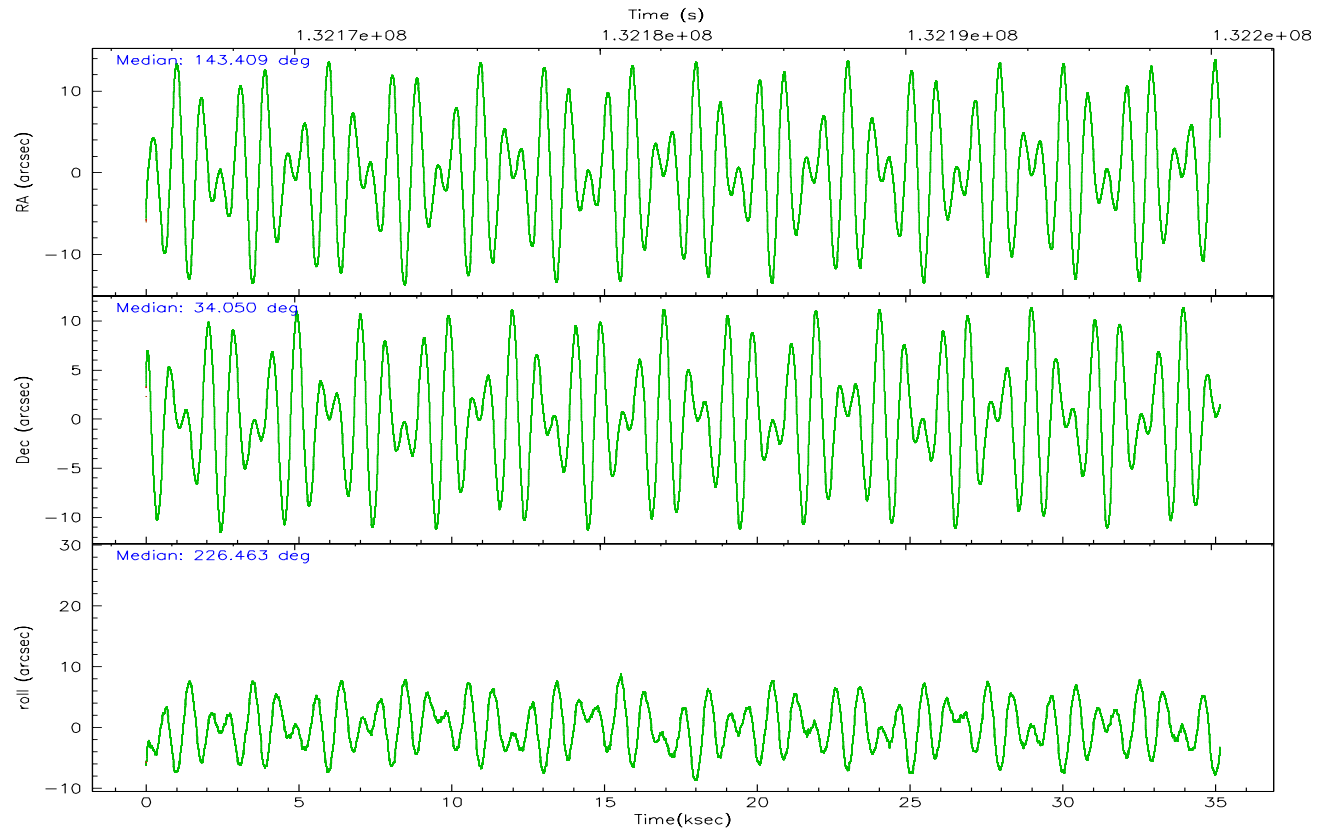
	ccd 0	ccd 1	ccd 2	ccd 3	ccd 6
grade 0 events	9874	8156	7490	7042	6683
	5%	4%	3%	3%	3%
grade 1 events	117	97	88	91	85
	0%	0%	0%	0%	0%
grade 2 events	4665	4318	4413	3882	4138
	2%	2%	2%	1%	2%
grade 3 events	2294	2550	2167	2104	2247
	1%	1%	1%	1%	1%
grade 4 events	2143	2505	2188	2016	2199
	1%	1%	1%	0%	1%
grade 5 events	6487	7048	5866	6830	7230
	3%	3%	2%	3%	3%
grade 6 events	3853	4133	3664	3748	4276
	2%	2%	1%	1%	2%
grade 7 events	162618	160023	186849	177629	174533
	84%	84%	87%	87%	86%

2.2 Compared Parameters

Parameter	Planned	Actual	Parameter	Planned	Actual
Instrument	ACIS	ACIS	Obspar format version number	6	6
Detector	ACIS-01236	ACIS-01236	Obspar file type	PREDICTED	ACTUAL
Grating	NONE	NONE	Obspar update status	NONE	UPDATED
Data mode	VFAINT	VFAINT	On-chip summing requested	N	N
Observation mode	POINTING	POINTING	Subarray requested	NONE	NONE
Pointing RA	143.416581	143.4089417648896	Alternating exposures requested	N	N
Pointing Dec	34.076293	34.04963036391443	Primary exposure time	0.000000	3.1
Pointing Roll	226.256690	226.4696569363061			
SIM focus pos (mm)	-0.782348	-0.7809083437167272			
SIM defocus (mm)	0	0.001439871863259334			
SIM translation stage pos (mm)	-233.592463	-233.5874344608287			
SIM translation stage offset (mm)	0	-0.005018542100998502			
Observation start time	132165293.184000	132164172.5386			
Observation start date	2002-03-10T16:33:49	2002-03-10T16:16:12			
Observation end time	132200293.184000	132200551.84008			
Observation end date	2002-03-11T02:17:09	2002-03-11T02:22:31			
Read mode	TIMED	TIMED			

2.3 Aspect



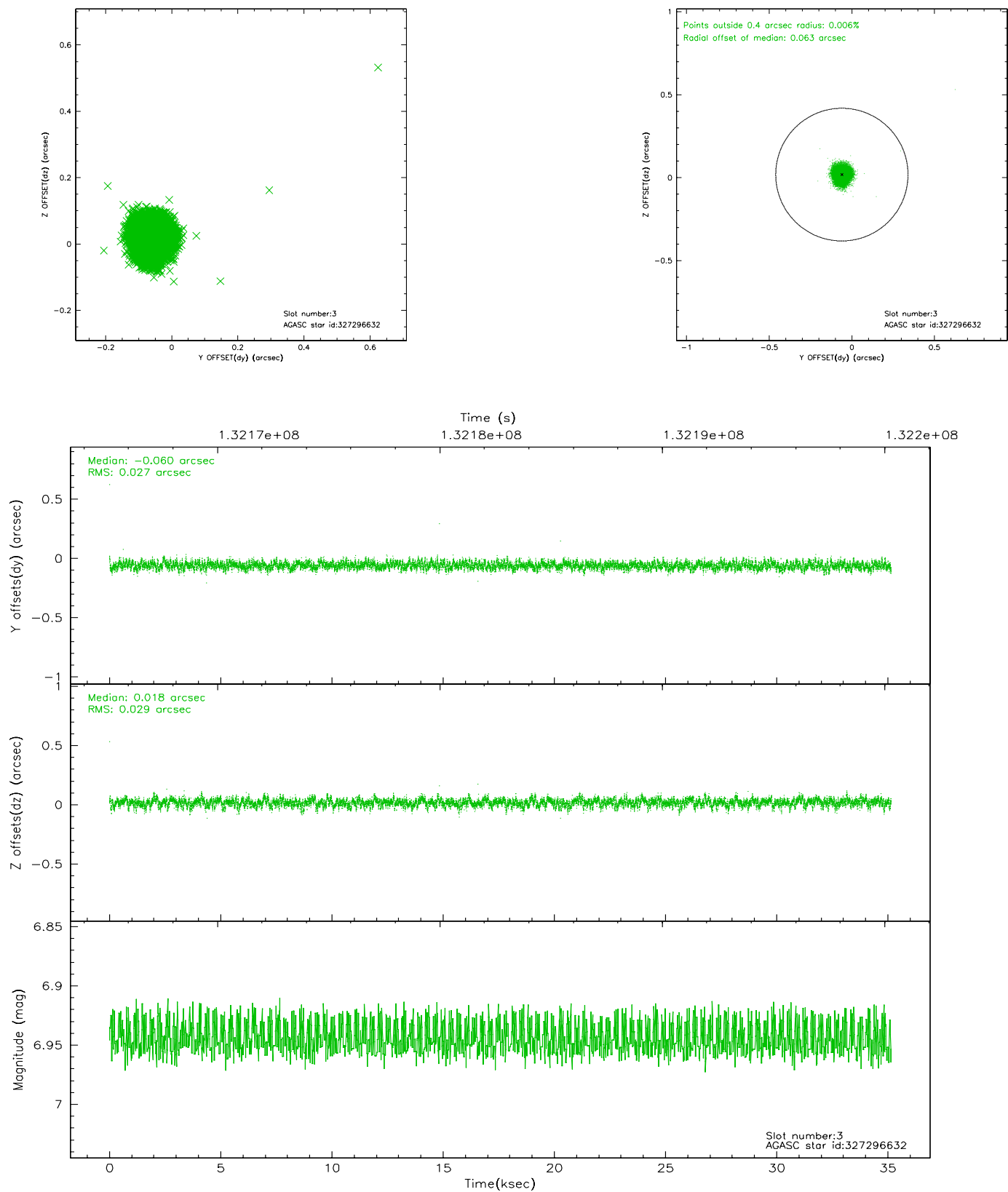


Slot Statistics

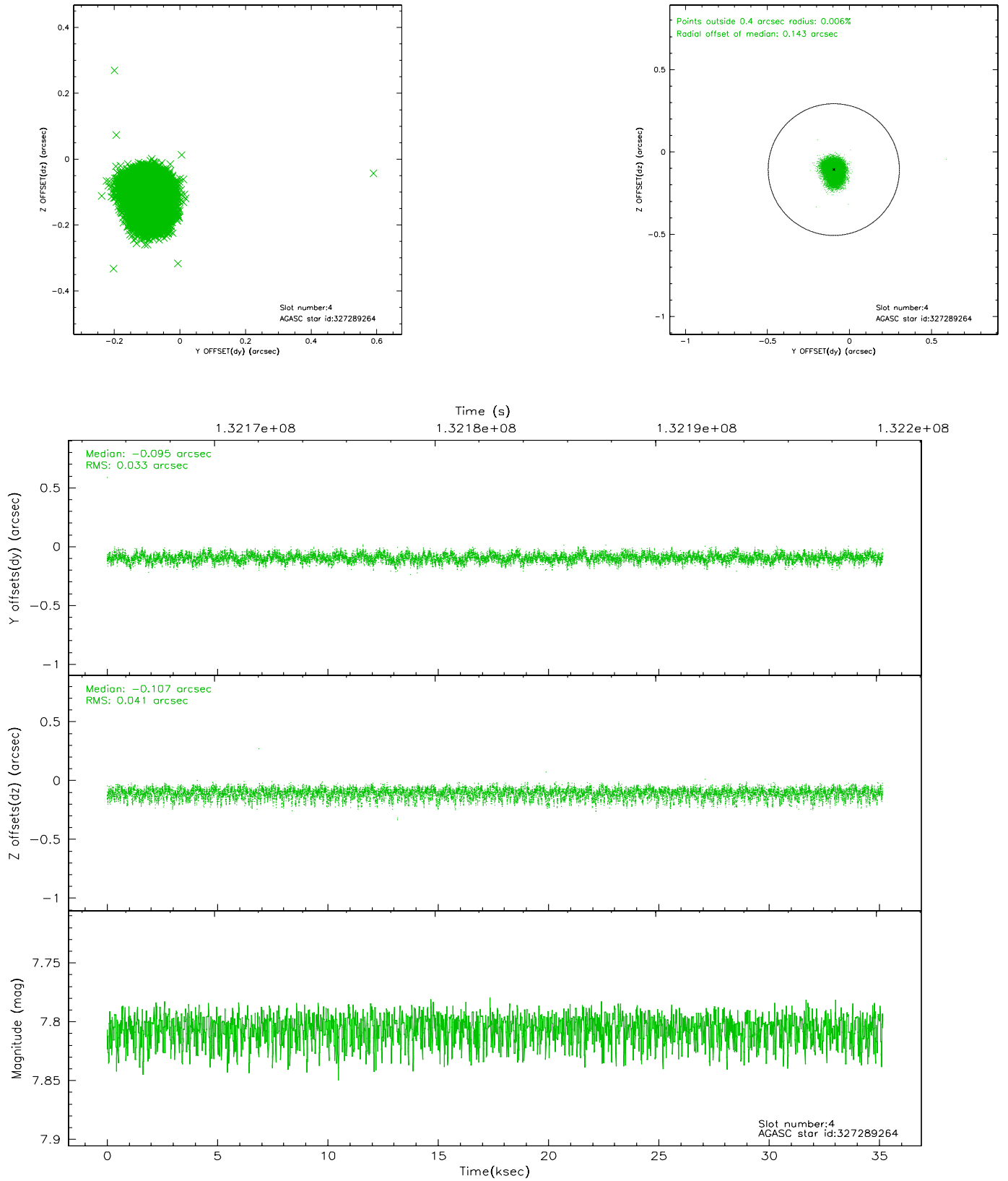
slot	status	id	mag	n_pts	med_dy	med_dz	dr1	dr2	ra	dec	mean_y	mean_z
0	FID	ACIS-I-1	7.25	8574	-0.073	-0.069	0.010	0.023	0.000000	0.000000	937.43	-830.40
1	FID	ACIS-I-3	7.45	8574	-0.007	0.180	0.009	0.022	0.000000	0.000000	55.02	-963.48
2	FID	ACIS-I-5	7.23	8574	-0.012	-0.037	0.010	0.043	0.000000	0.000000	-1810.69	1067.08
3	GUIDE	327296632	6.95	17148	-0.060	0.018	0.041	0.067	142.712336	34.210933	1094.83	-1854.52
4	GUIDE	327289264	7.81	17142	-0.095	-0.107	0.055	0.091	143.561363	34.811163	-2206.95	-1520.61
5	GUIDE	328211000	8.50	17040	-0.063	0.087	0.064	0.104	144.064758	34.017178	-1188.04	1540.29
6	GUIDE	327290976	9.44	17142	0.010	0.010	0.099	0.160	142.884152	34.565457	-183.32	-2360.51
7	GUIDE	327295504	9.41	17139	0.206	-0.002	0.079	0.130	143.297254	33.917095	660.86	138.70

2.4 Star Slots

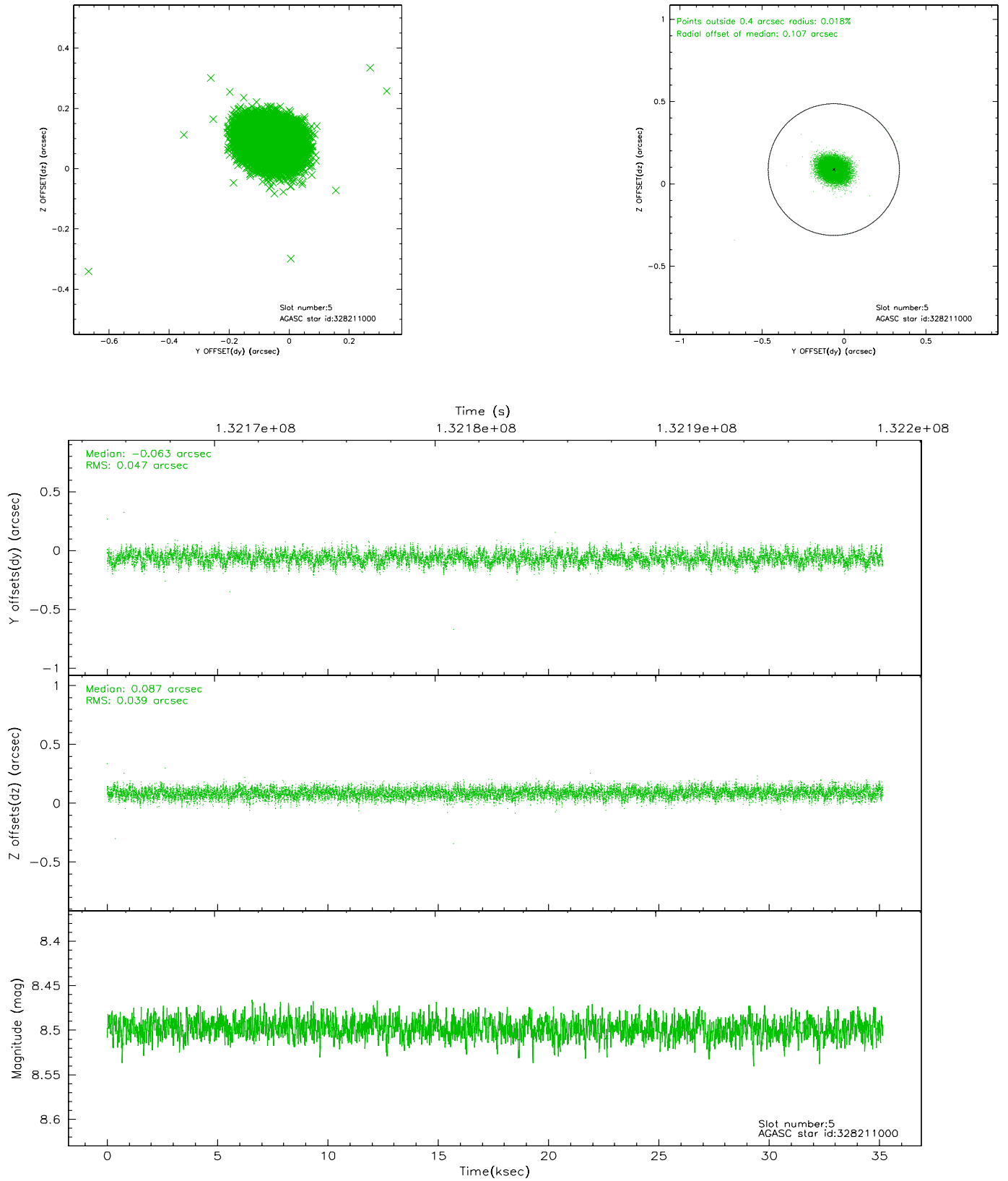
2.4.1 Slot 3



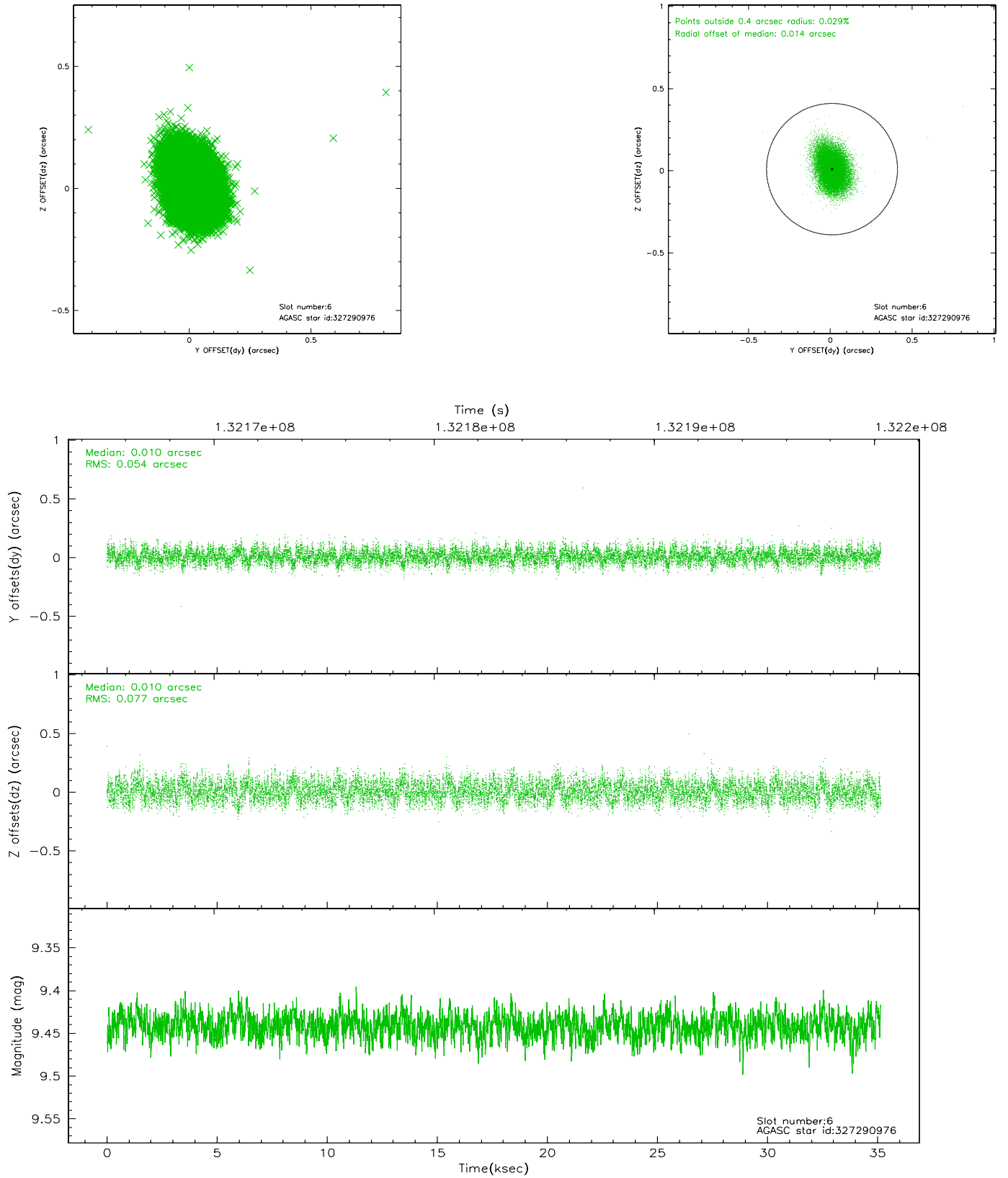
2.4.2 Slot 4



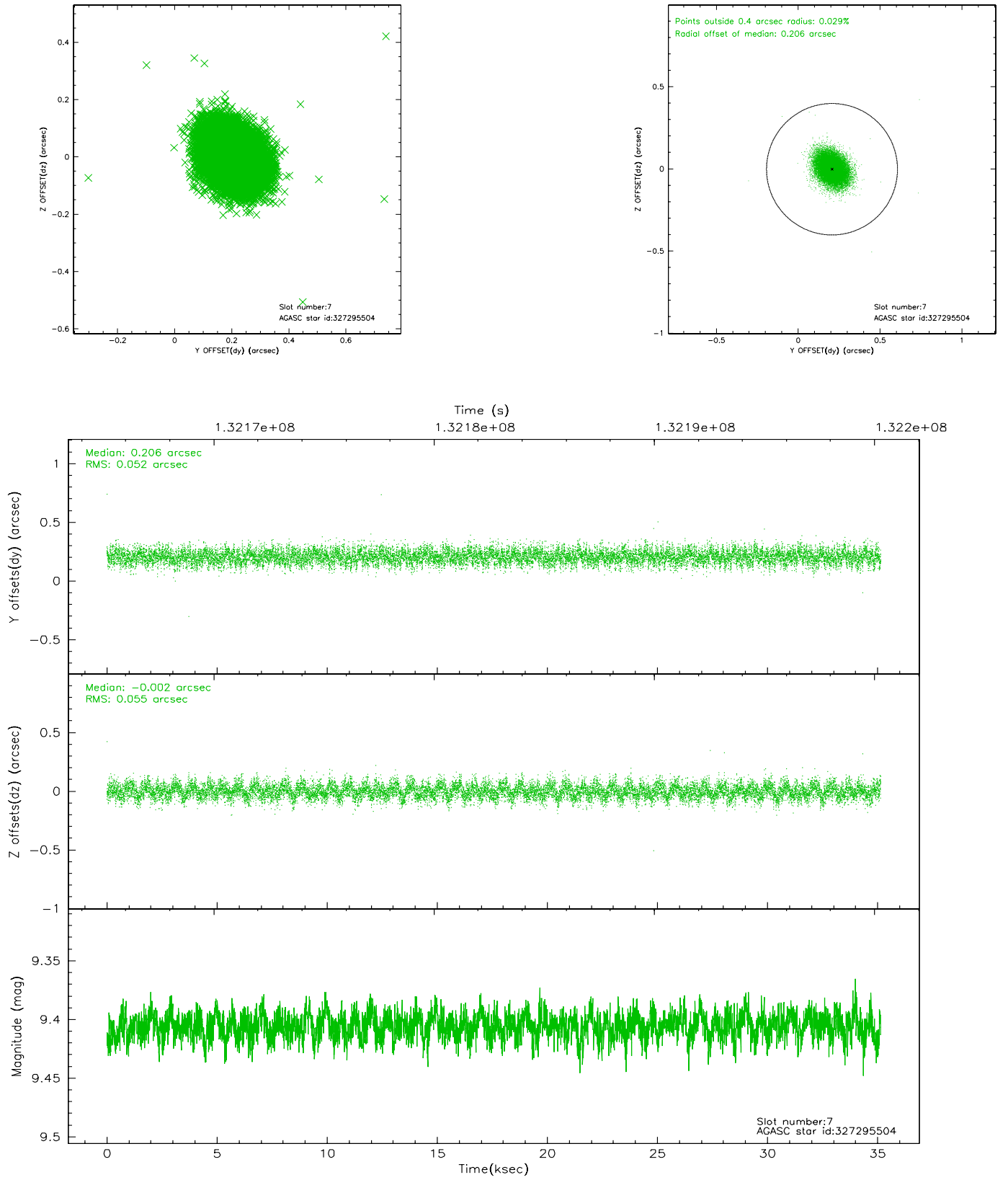
2.4.3 Slot 5



2.4.4 Slot 6

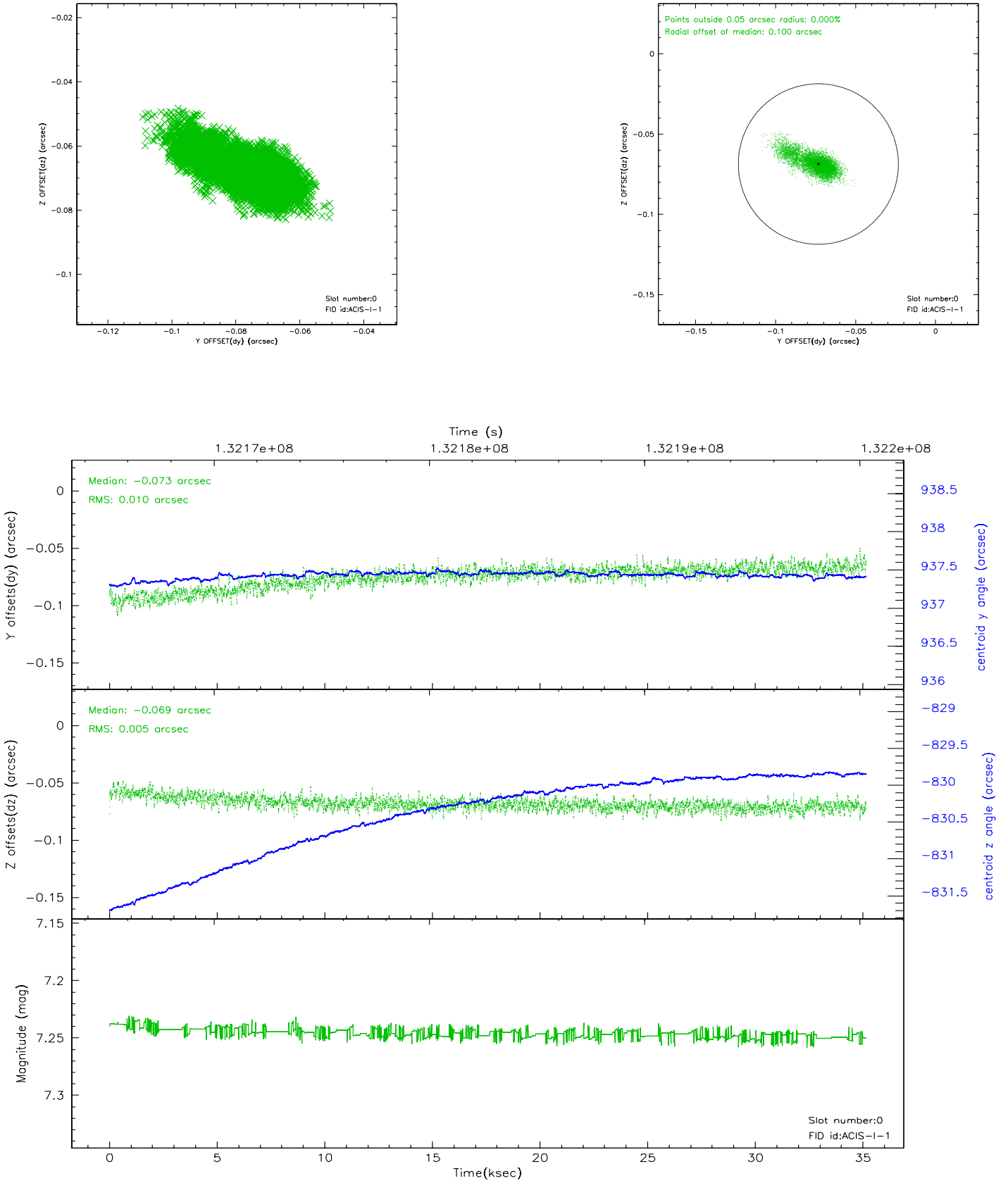


2.4.5 Slot 7

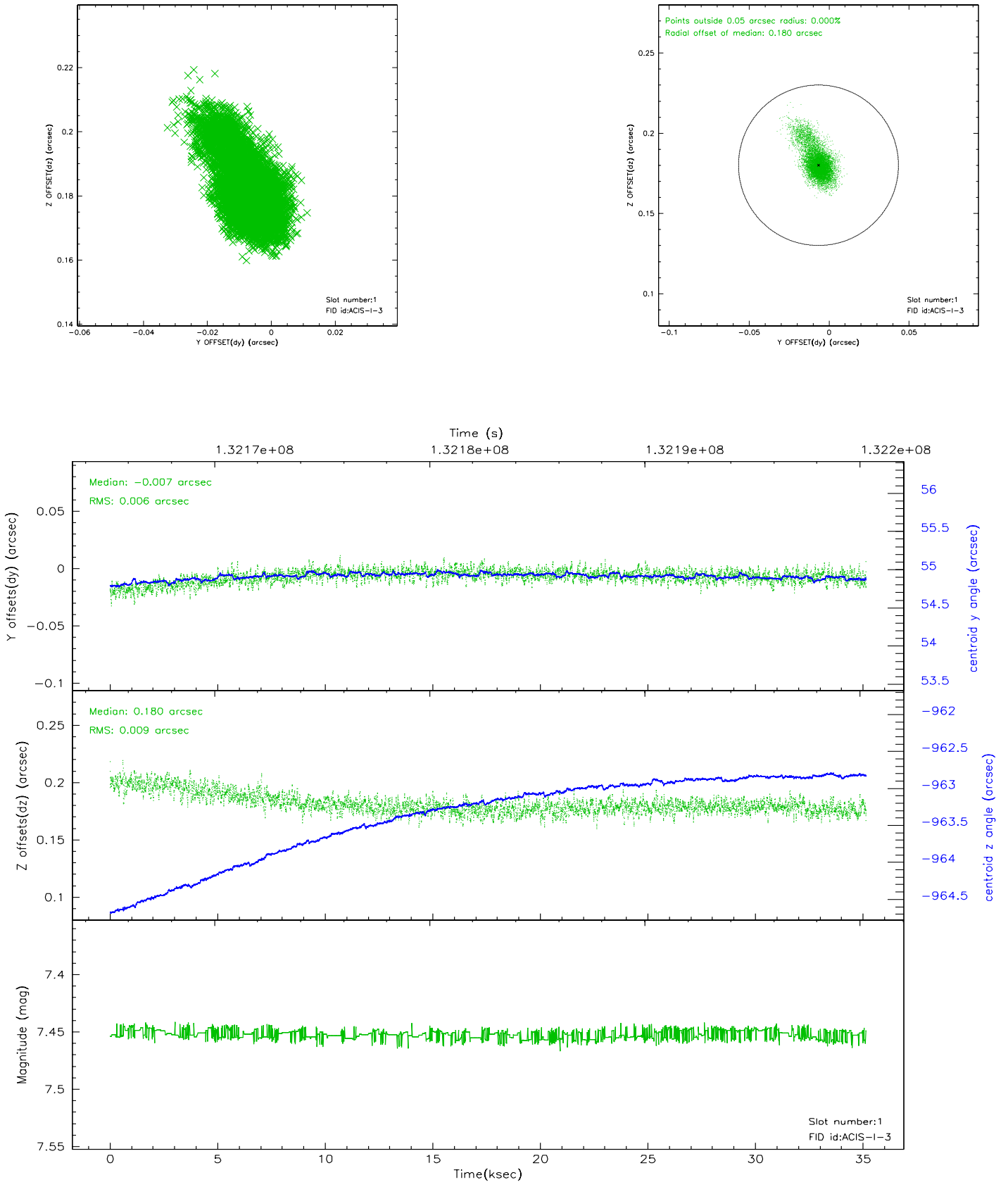


2.5 FID Slots

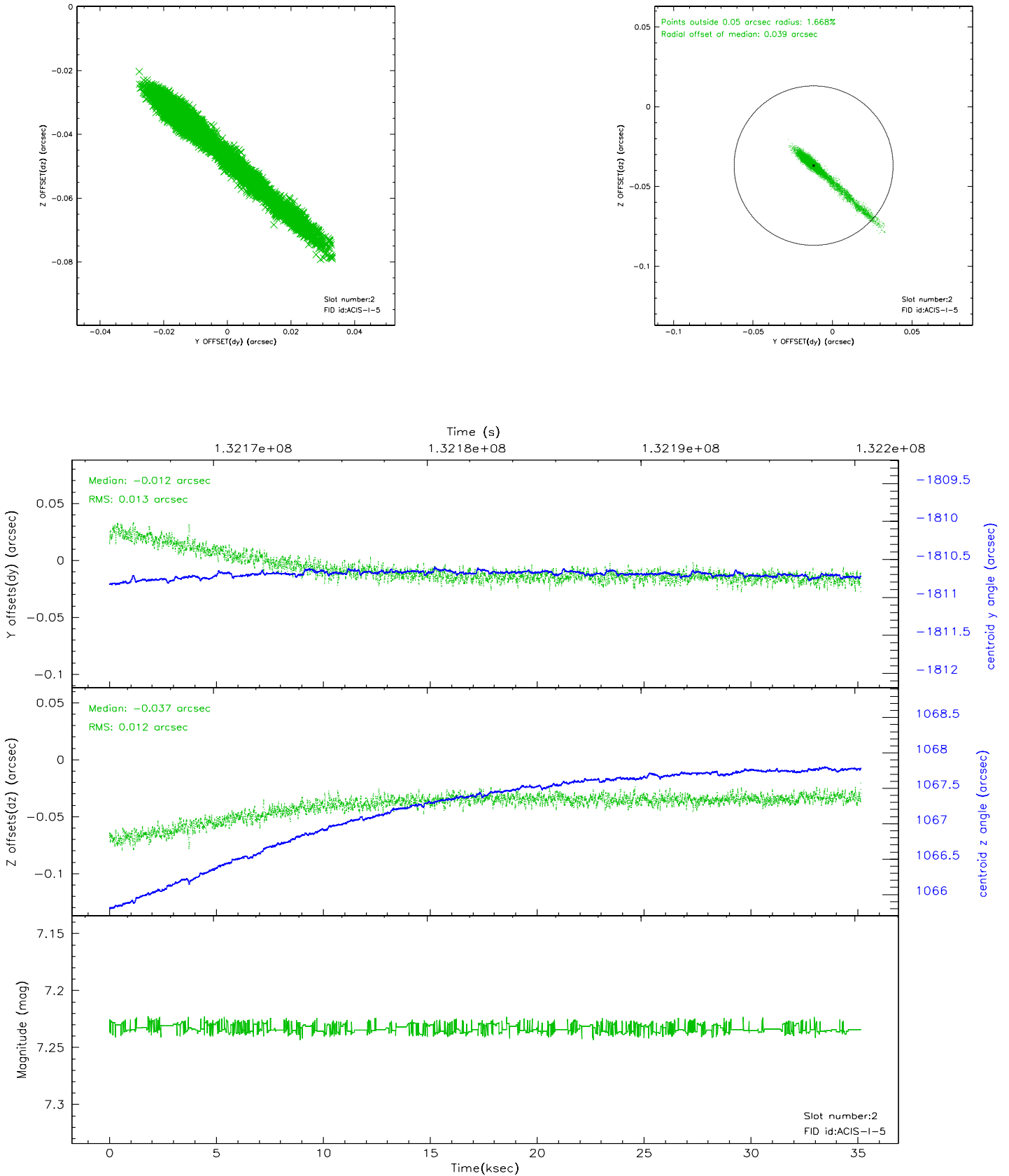
2.5.1 Slot 0



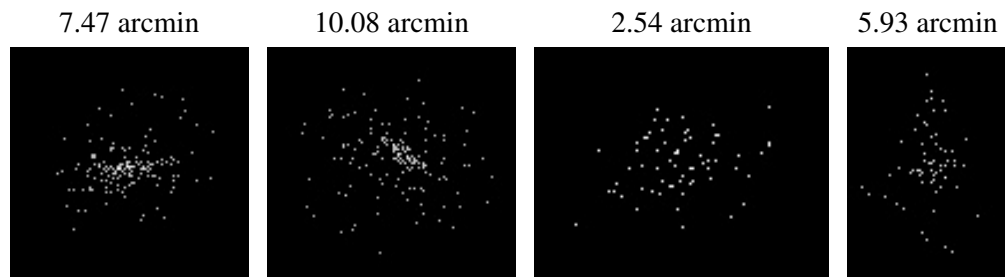
2.5.2 Slot 1



2.5.3 Slot 2



3 Point Sources



A Summary

A.1 Status

V&V Scientist	Jen Lauer
V&V Date (YYYY-MM-DD)	2006.09.06
V&V Edition	1
V&V Disposition and Status	OK
V&V Charge Time	34.772

A.2 Comments