

V&V Reference Report

L2 ASCDS Version : 7.6.9

Observation 3214 - L2 Version 001
Chandra X-Ray Center

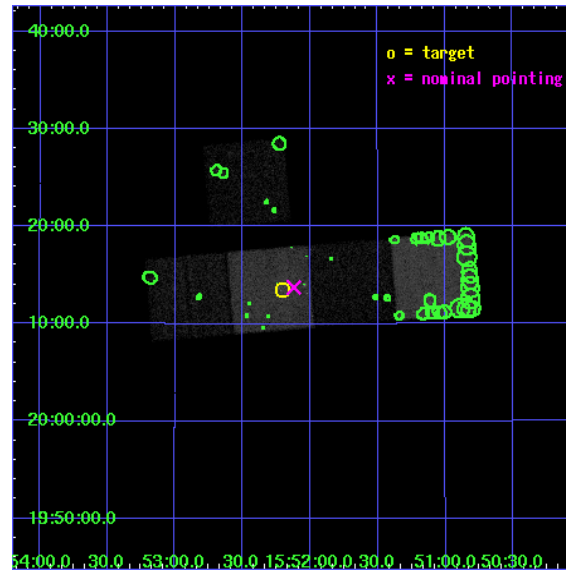
L2 Processing Date : Sep 16 2006

Contents

1	Front	2
2	OBI	3
2.1	OBI	3
2.1.1	Images	3
2.1.2	Bias	3
2.1.3	Parameters	4
2.1.4	Events	4
2.2	Compared Parameters	5
2.3	Aspect	6
2.4	Star Slots	9
2.4.1	Slot 3	9
2.4.2	Slot 4	10
2.4.3	Slot 5	11
2.4.4	Slot 6	12
2.4.5	Slot 7	13
2.5	FID Slots	14
2.5.1	Slot 0	14
2.5.2	Slot 1	15
2.5.3	Slot 2	16
3	Point Sources	17
A	Summary	18
A.1	Status	18
A.2	Comments	18

1 Front

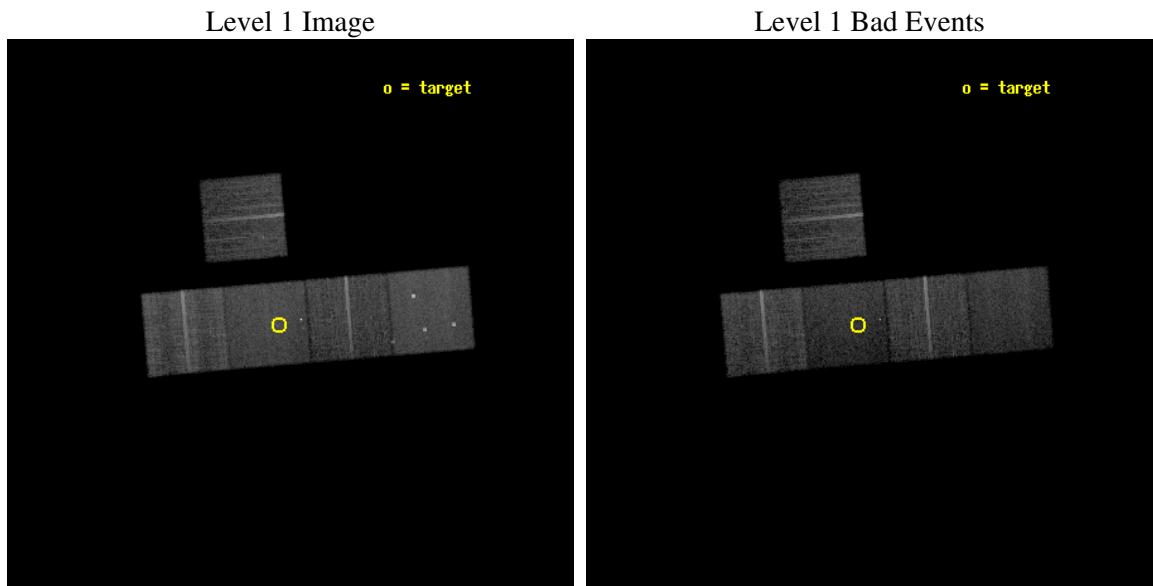
seq_num	800214
obs_id	3214
title	THE X-RAY STRUCTURE OF OLD, HIGH LUMINOSITY FOSSIL GALAXY GROUPS
observer	Dr Laurence Jones
object	RXJ1552.2+2013
dtcycle	0
cycle	P
ra_targ	238.052083
dec_targ	20.225556
ra_nom	238.03023086296
dec_nom	20.229020438305
roll_nom	175.13177208184
revision	2
ontime	15131.099970907
livetime	14933.401010433
ontime3	15131.099970907
ontime5	15131.099970907
ontime6	15131.099970907
ontime7	15131.099970907
ontime8	15131.099970907
l2events	114942



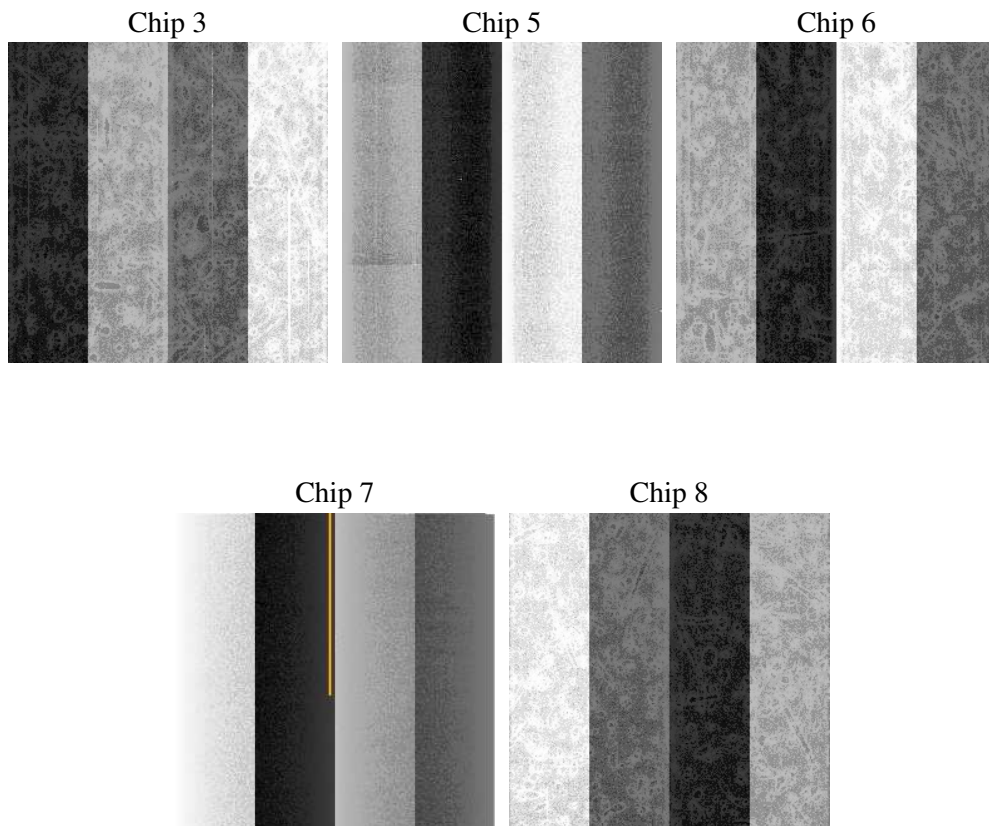
2 OBI

2.1 OBI

2.1.1 Images



2.1.2 Bias



2.1.3 Parameters

obi_num	1
ascdsver	7.6.9
caldsver	3.2.3
date	2006-09-16T15:52:54
revision	2

sched_exp_time	15000.000000
ontime	15507.135283172
ontime3	15507.135283172
ontime5	15507.135283172
ontime6	15507.135263264
ontime7	15507.135283172
ontime8	15507.135283172
l1events	497269

2.1.4 Events

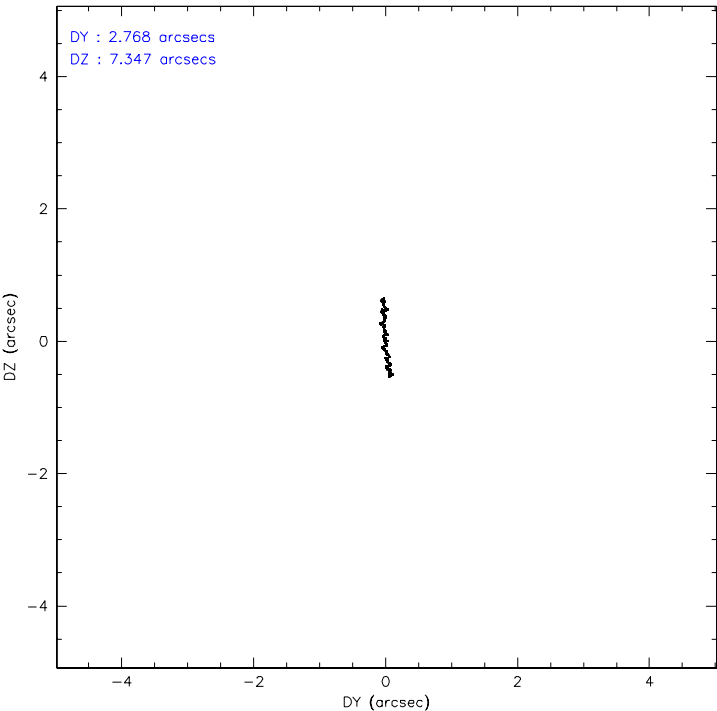
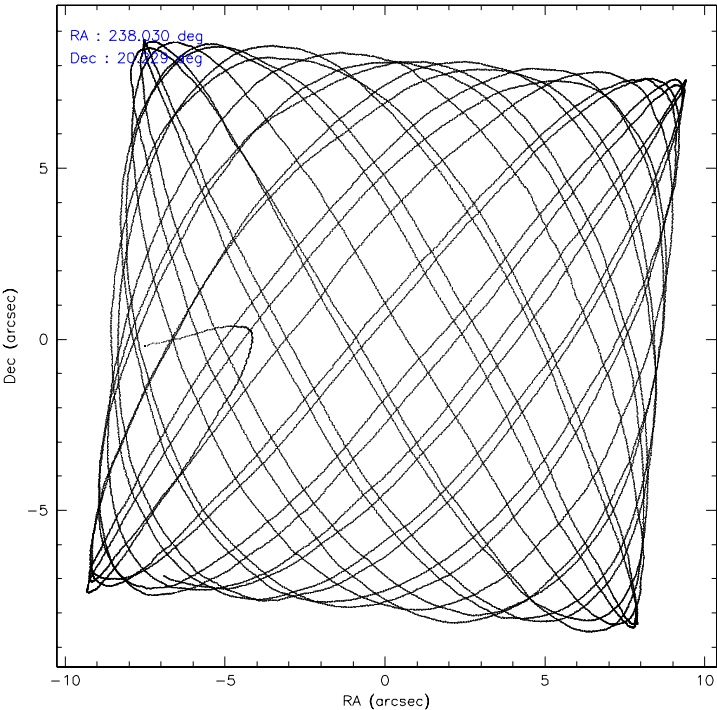
	ccd 3	ccd 5	ccd 6	ccd 7	ccd 8
level 1 events	84626	115202	86029	96554	114858
rejected events	76743	59083	76982	53333	85018
rejected %	90%	51%	89%	55%	74%

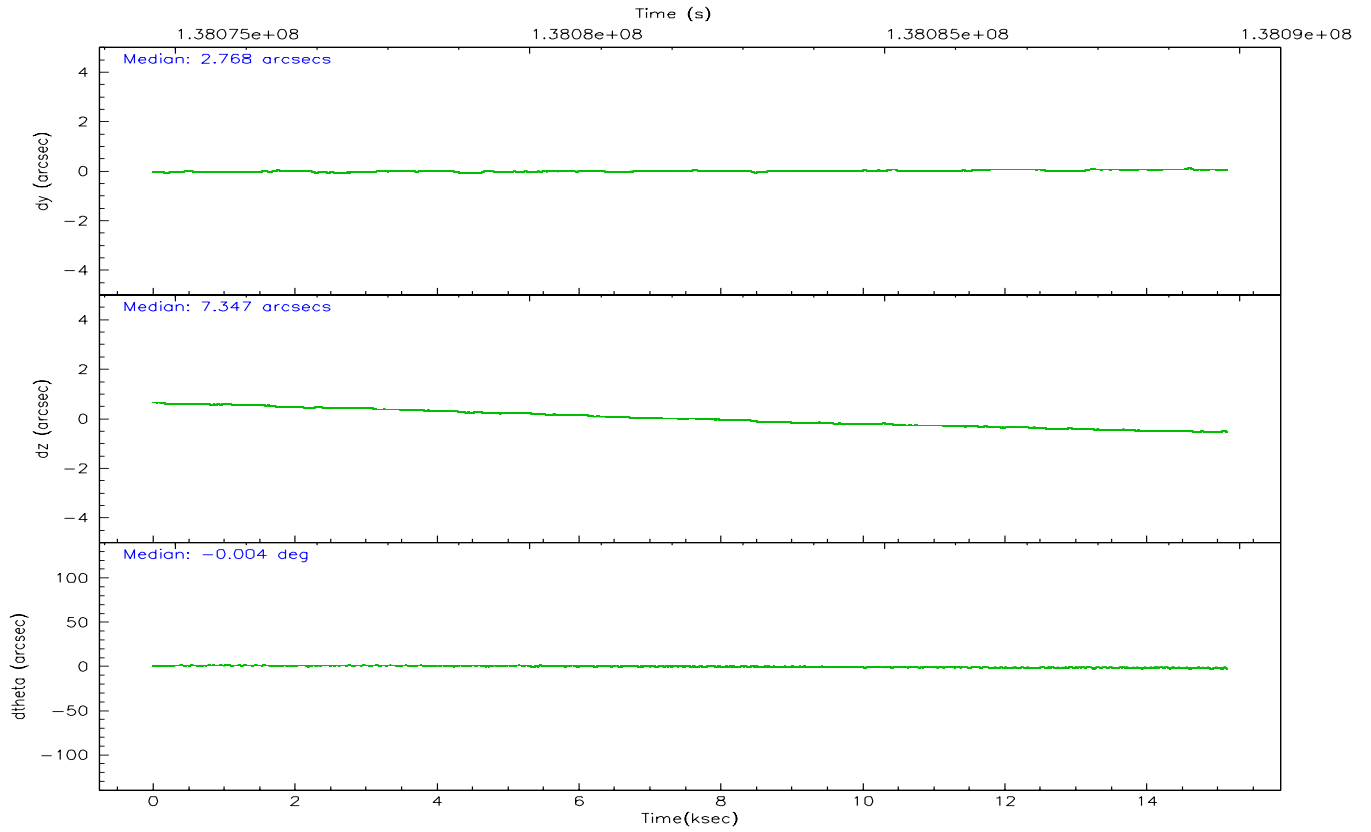
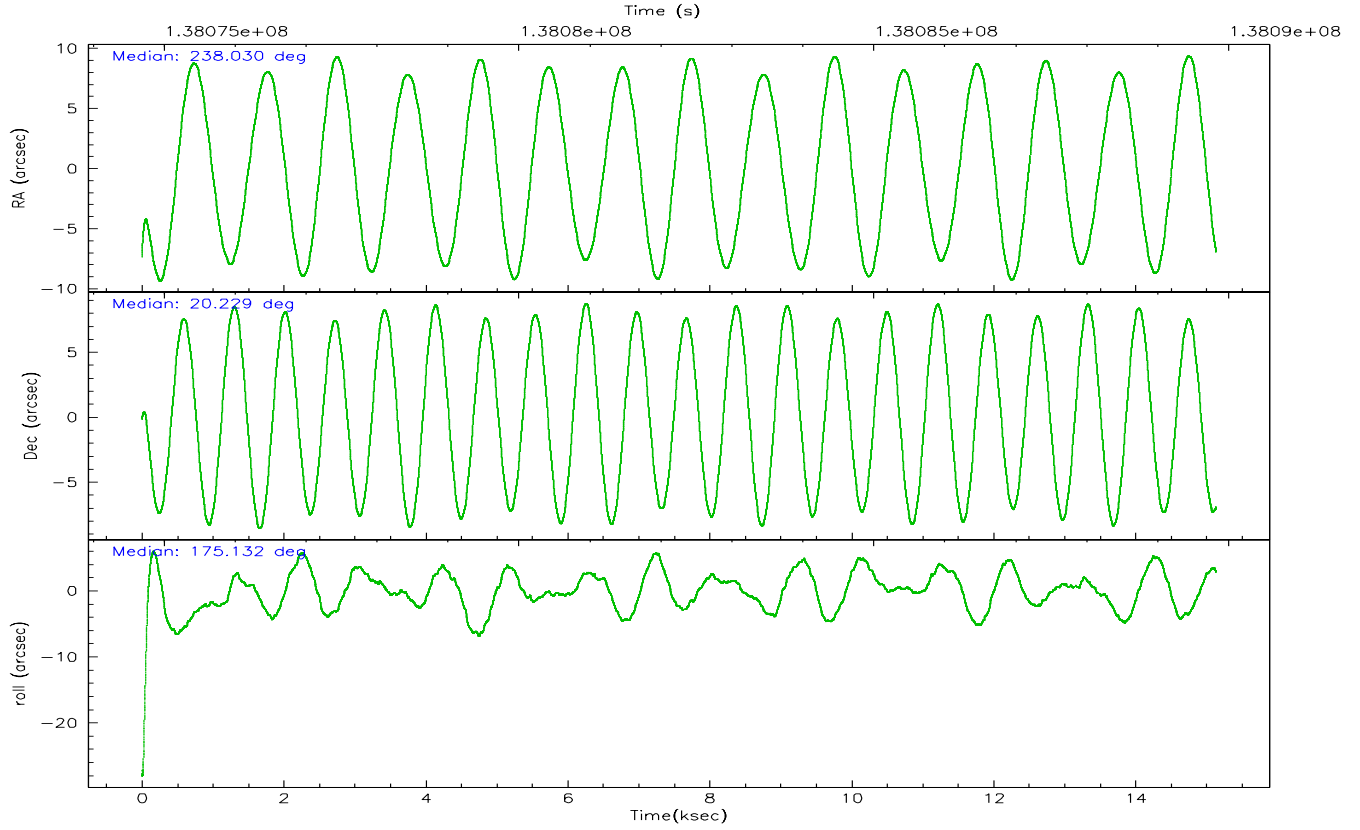
	ccd 3	ccd 5	ccd 6	ccd 7	ccd 8
grade 0 events	3131	8694	3663	4168	10838
	3%	7%	4%	4%	9%
grade 1 events	29	155	56	98	104
	0%	0%	0%	0%	0%
grade 2 events	1625	16666	1802	11016	5452
	1%	14%	2%	11%	4%
grade 3 events	874	1643	996	3000	4238
	1%	1%	1%	3%	3%
grade 4 events	890	1493	993	2899	3869
	1%	1%	1%	3%	3%
grade 5 events	2961	5911	3167	7274	4429
	3%	5%	3%	7%	3%
grade 6 events	1569	29139	1809	23181	6381
	1%	25%	2%	24%	5%
grade 7 events	73547	51501	73543	44918	79547
	86%	44%	85%	46%	69%

2.2 Compared Parameters

Parameter	Planned	Actual	Parameter	Planned	Actual
Instrument	ACIS	ACIS	Obspar format version number	6	6
Detector	ACIS-35678	ACIS-35678	Obspar file type	PREDICTED	ACTUAL
Grating	NONE	NONE	Obspar update status	NONE	UPDATED
Data mode	VFAINT	VFAINT	Number of optional ACIS chips dropped	0	0
Observation mode	POINTING	POINTING	On-chip summing requested	N	N
Pointing RA	238.056383	238.030230862956	Subarray requested	NONE	NONE
Pointing Dec	20.240932	20.22902043830491	Alternating exposures requested	N	N
Pointing Roll	174.966128	175.1317720818418	Primary exposure time	0.000000	3.1
SIM focus pos (mm)	-0.684267	-0.6828225247311905			
SIM defocus (mm)	0	0.001444936568705701			
SIM translation stage pos (mm)	-190.132523	-190.1400660498719			
SIM translation stage offset (mm)	0	0.00754346686406393			
Observation start time	138074822.184000	138073667.2913			
Observation start date	2002-05-18T02:05:58	2002-05-18T01:47:47			
Observation end time	138089822.184000	138090517.77949			
Observation end date	2002-05-18T06:15:58	2002-05-18T06:28:37			
Read mode	TIMED	TIMED			

2.3 Aspect



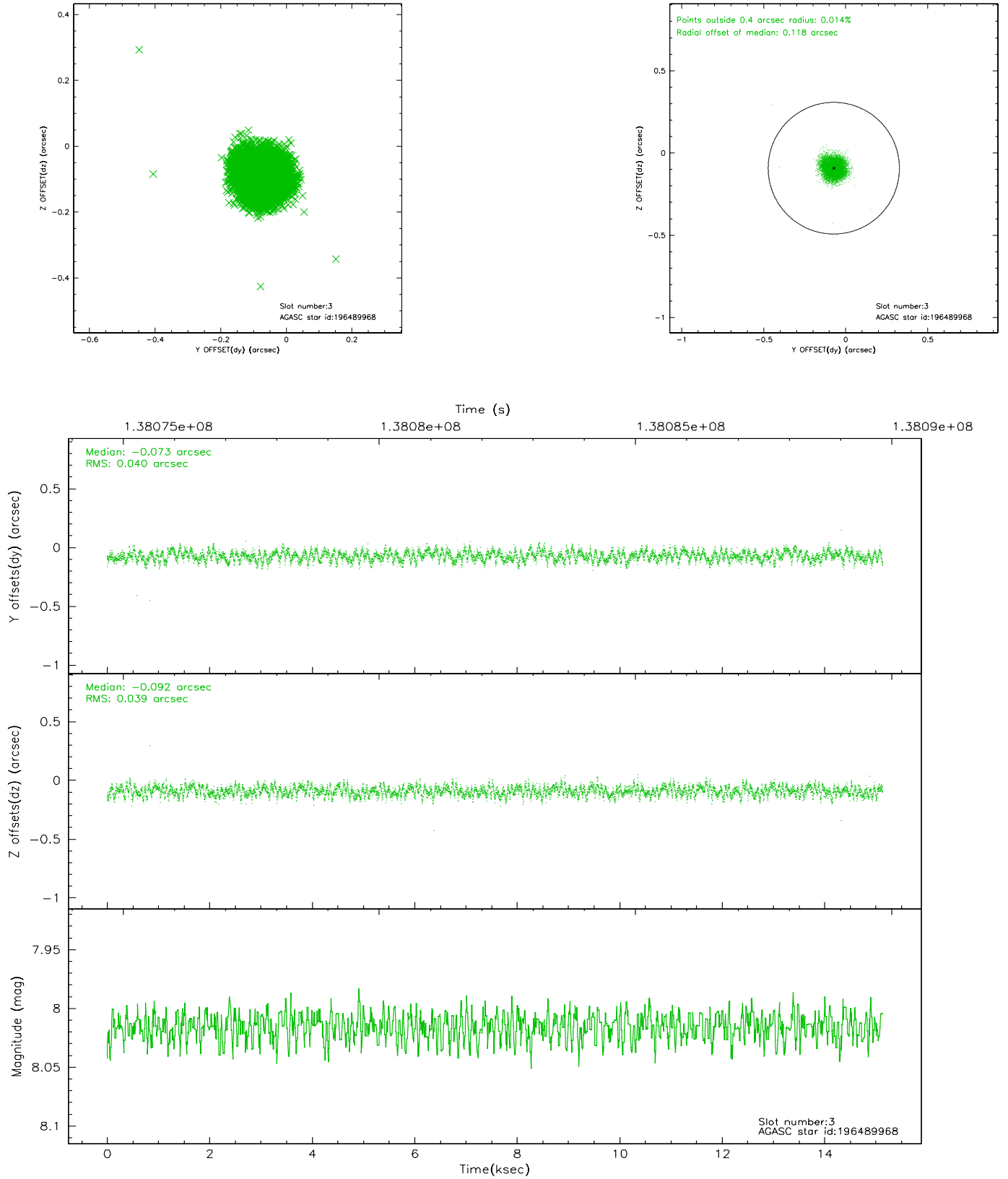


Slot Statistics

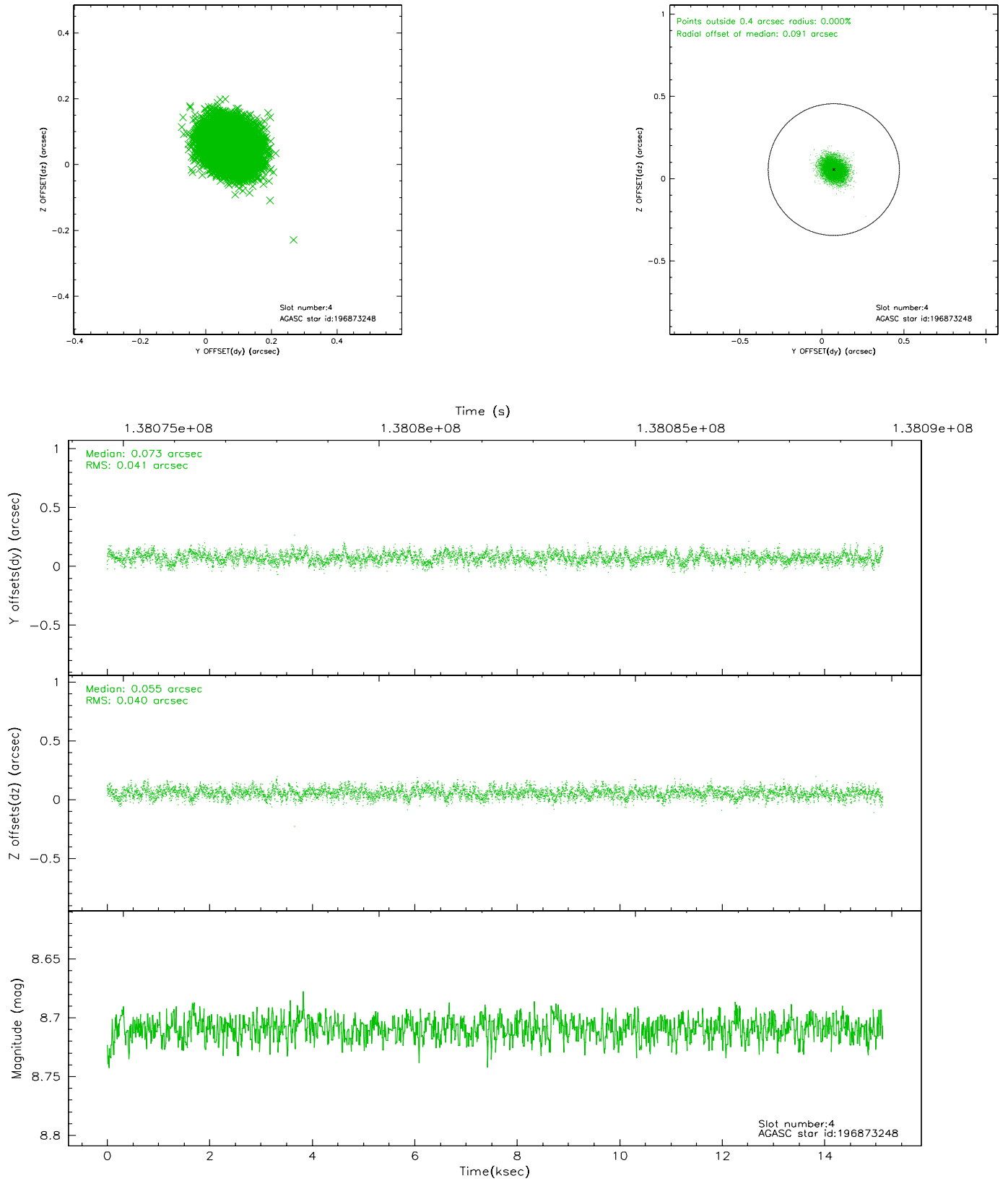
slot	status	id	mag	n_pts	med_dy	med_dz	dr1	dr2	ra	dec	mean_y	mean_z
0	FID	ACIS-S-2	7.11	3691	0.002	0.031	0.009	0.014	0.000000	0.000000	-755.41	-1728.51
1	FID	ACIS-S-4	7.20	3692	-0.082	-0.009	0.007	0.013	0.000000	0.000000	2157.65	179.62
2	FID	ACIS-S-5	7.24	3692	0.049	-0.013	0.008	0.012	0.000000	0.000000	-1807.82	173.64
3	GUIDE	196489968	8.02	7385	-0.073	-0.092	0.059	0.091	237.504150	19.692523	1690.99	2127.89
4	GUIDE	196873248	8.71	7384	0.073	0.055	0.061	0.099	238.212487	20.381335	-480.54	-549.56
5	GUIDE	196486768	9.95	7376	-0.031	-0.013	0.106	0.175	237.815681	19.909178	706.24	1260.57
6	GUIDE	196870968	9.76	7382	0.051	-0.047	0.099	0.158	238.606443	20.079805	-1903.74	411.75
7	GUIDE	196878088	9.55	7379	-0.018	0.101	0.119	0.186	238.308754	20.865304	-649.27	-2313.88

2.4 Star Slots

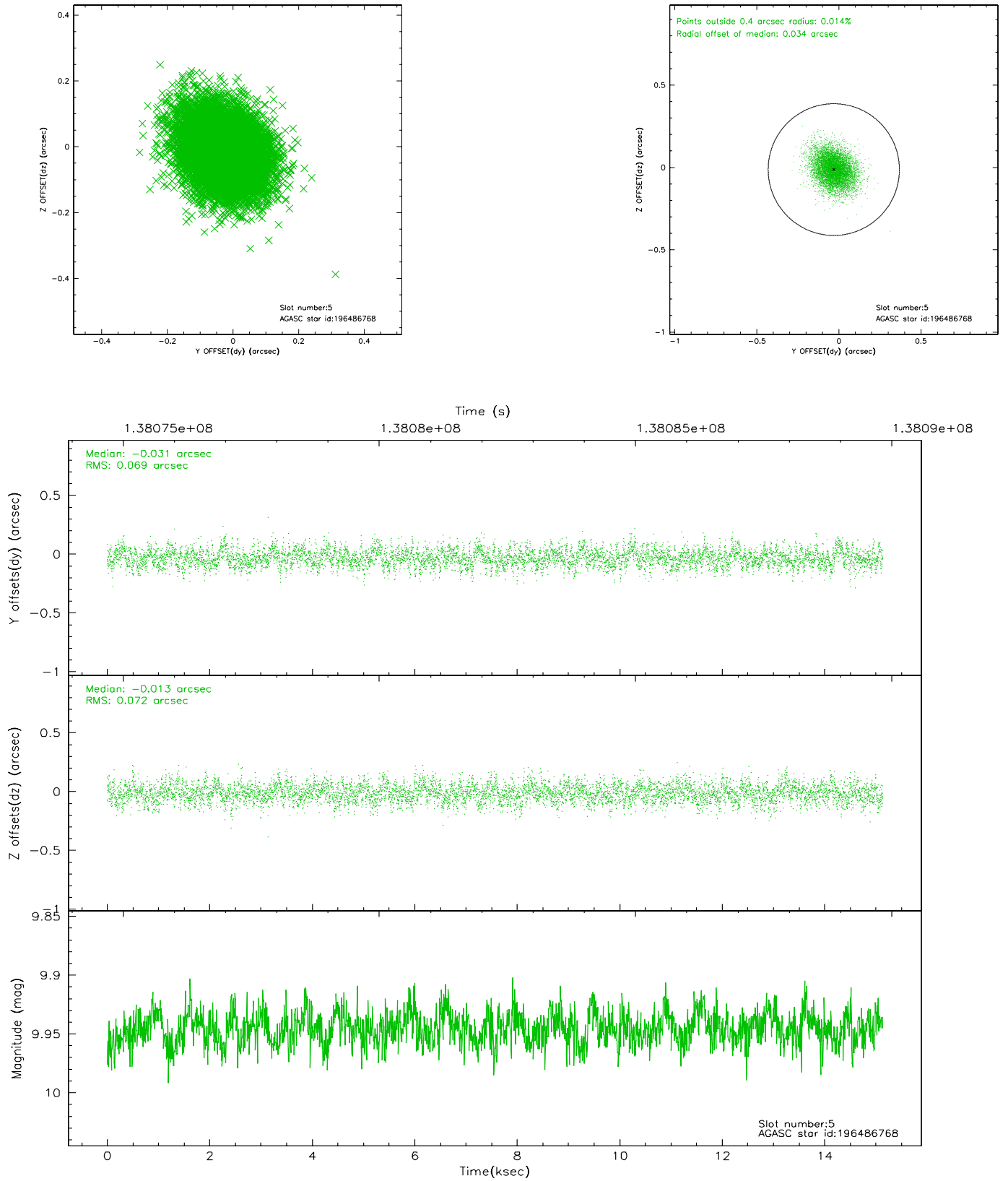
2.4.1 Slot 3



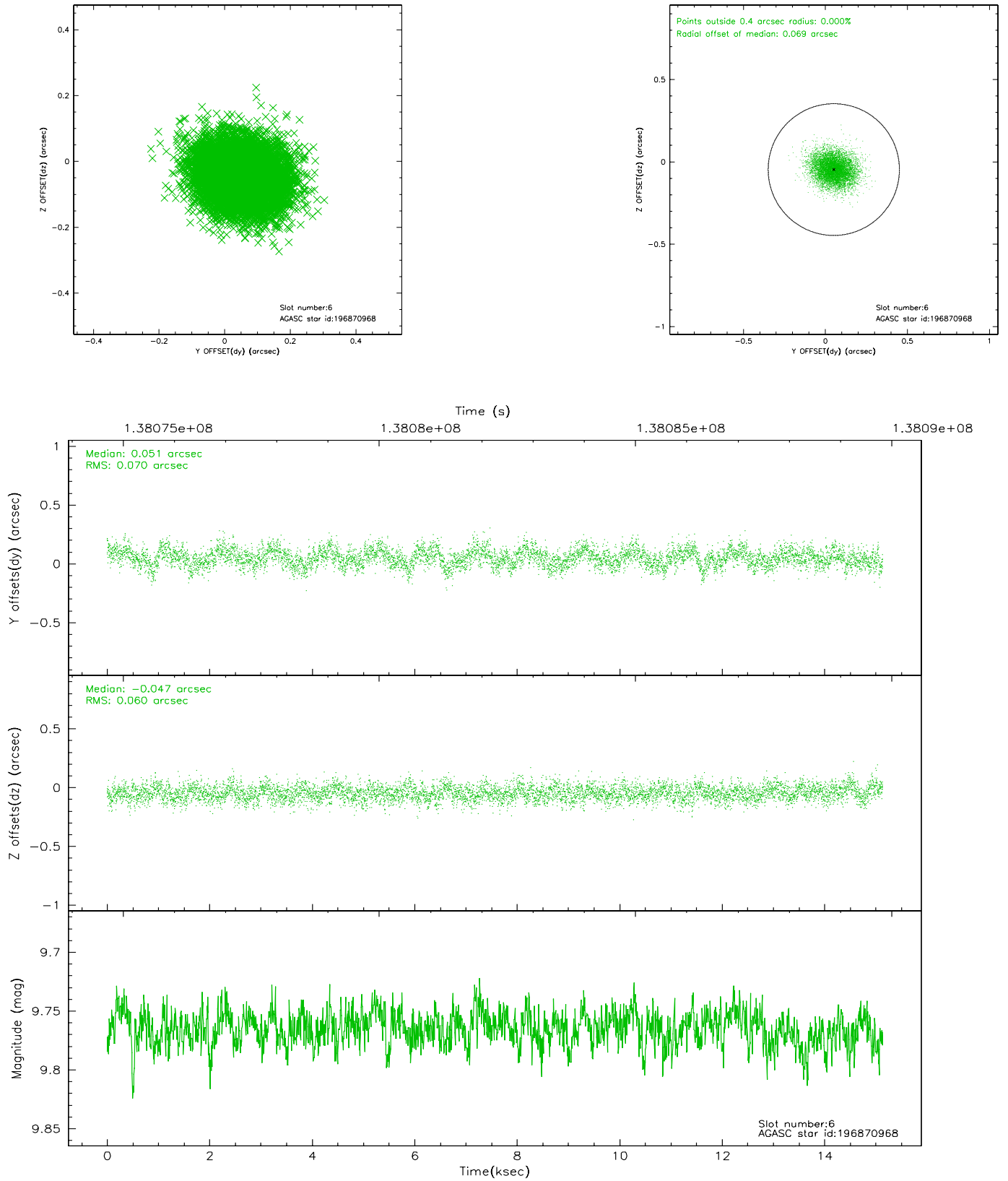
2.4.2 Slot 4



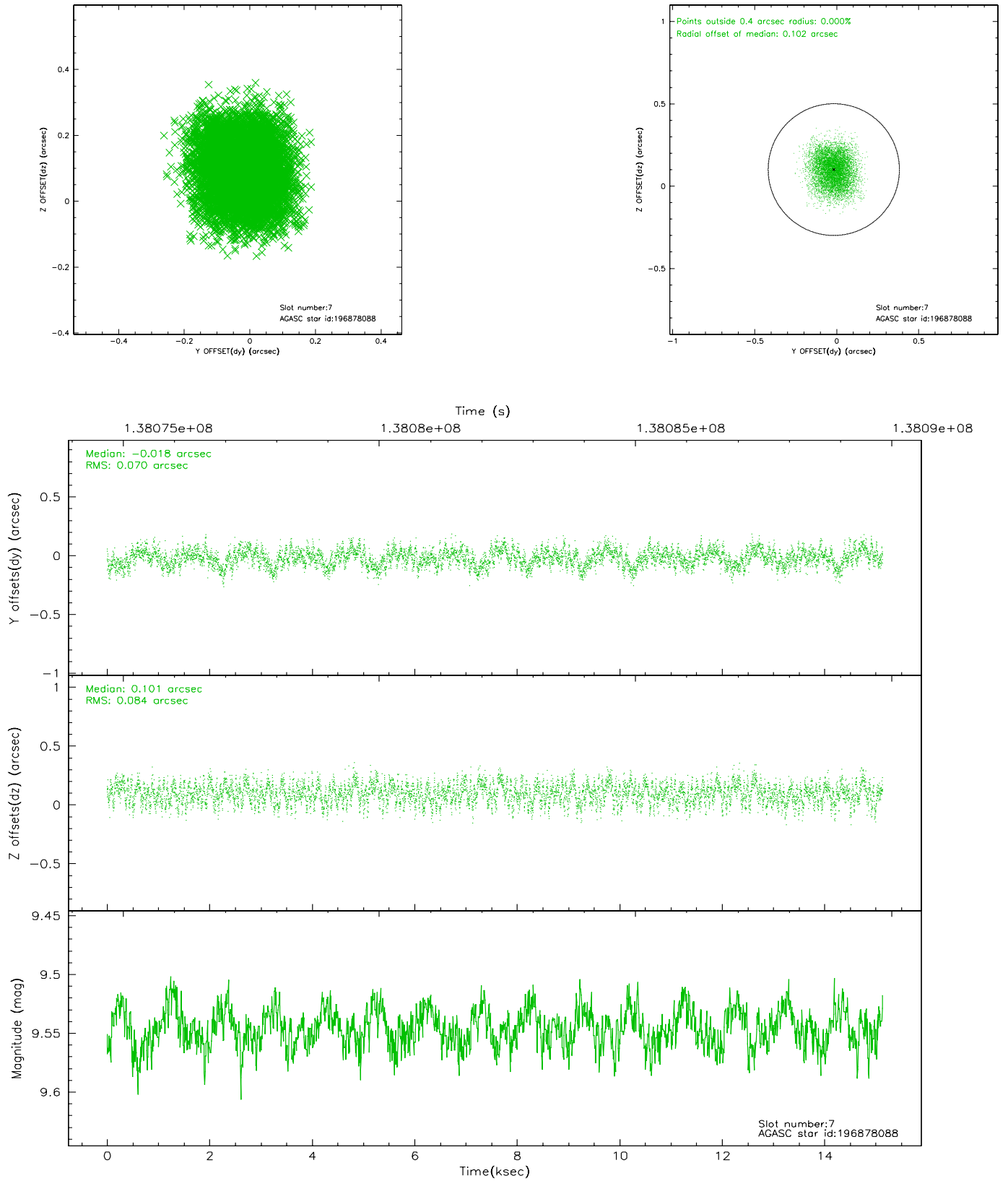
2.4.3 Slot 5



2.4.4 Slot 6

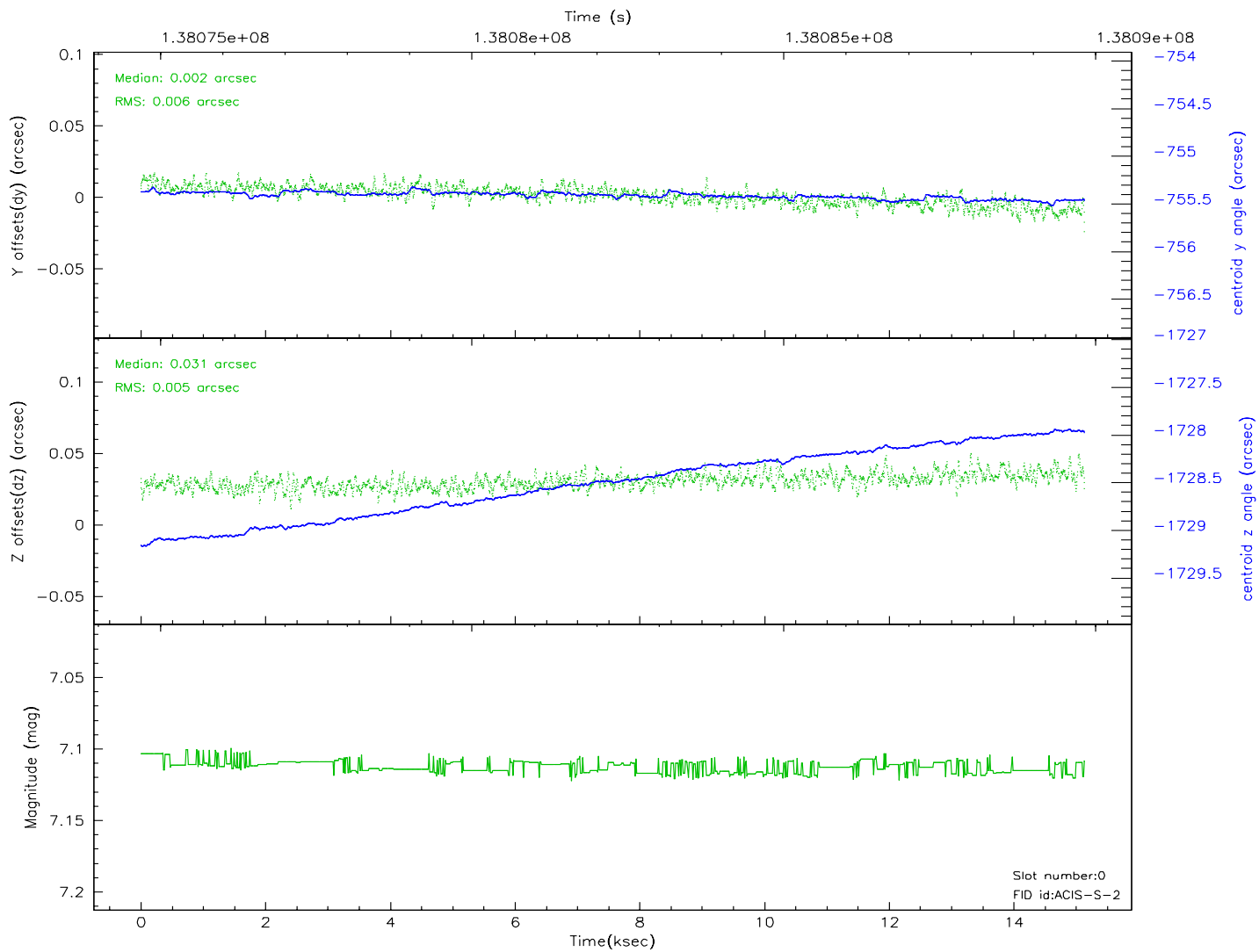
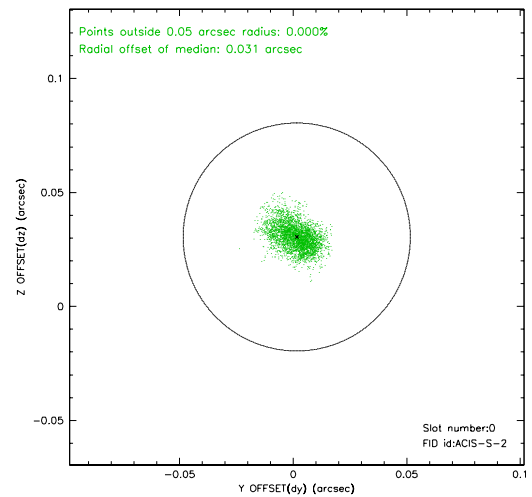
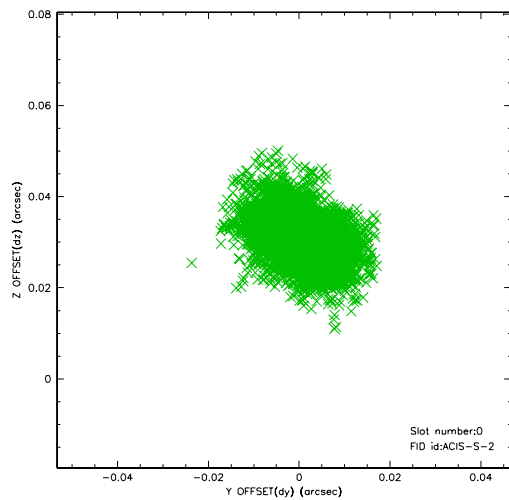


2.4.5 Slot 7

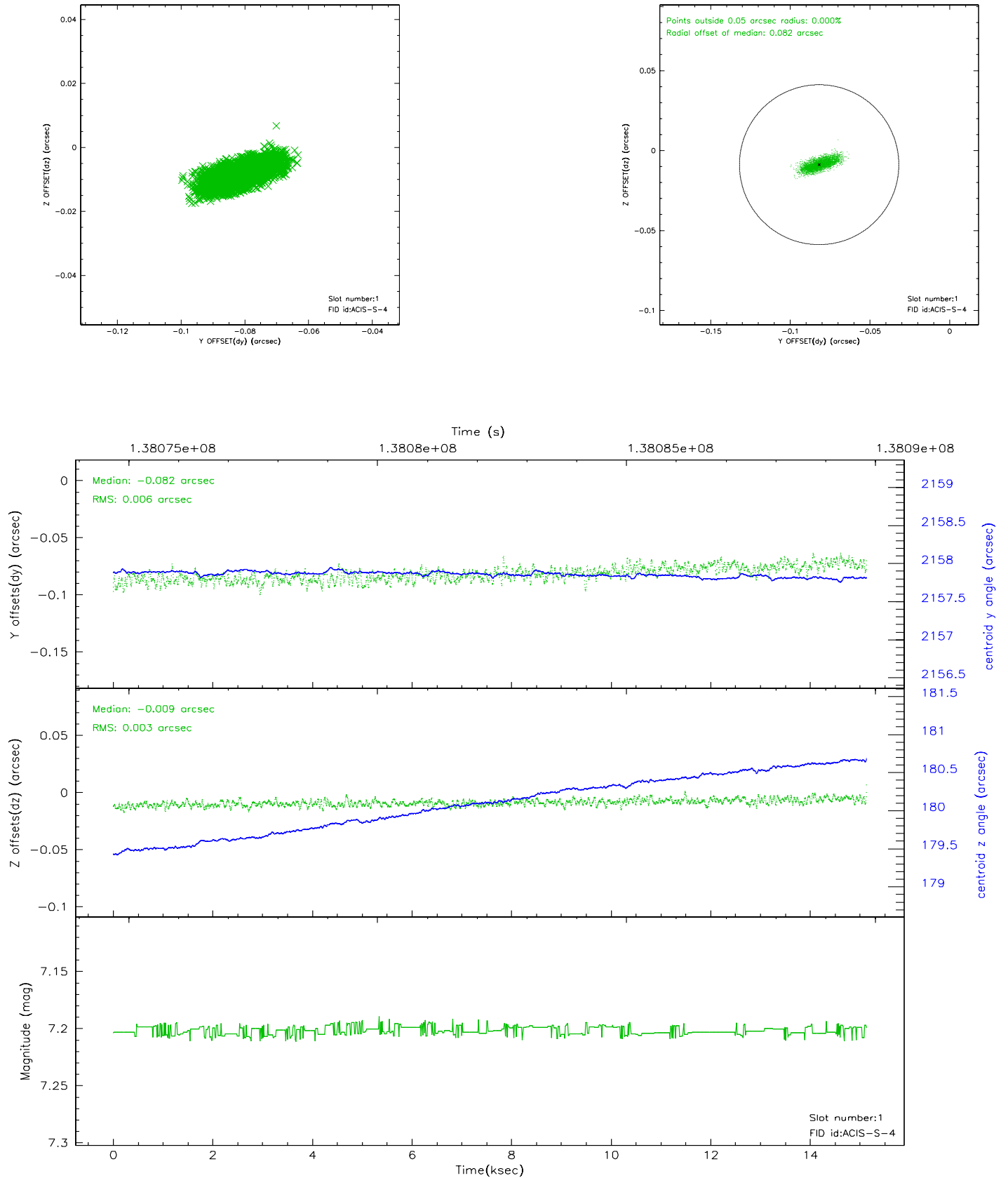


2.5 FID Slots

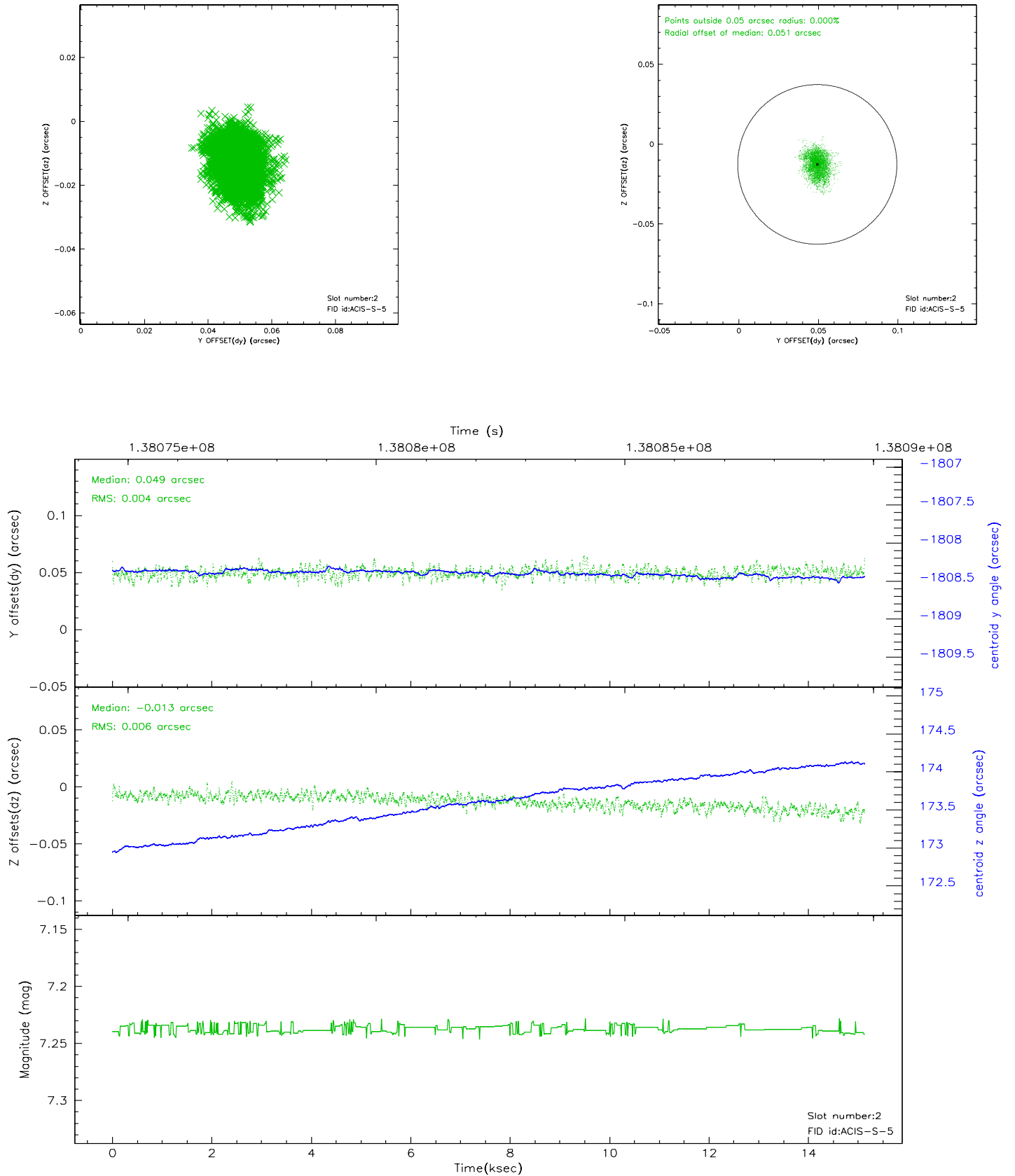
2.5.1 Slot 0



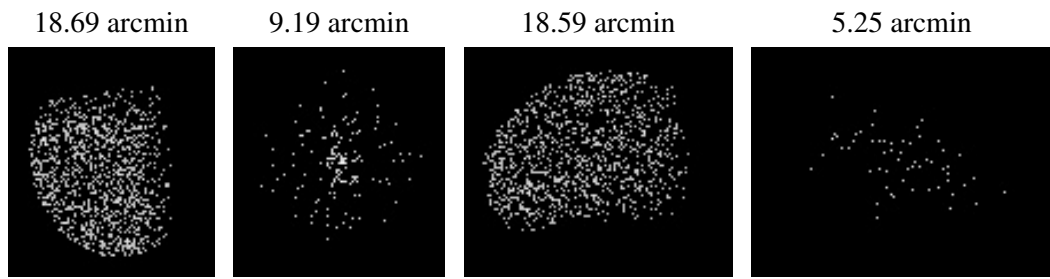
2.5.2 Slot 1



2.5.3 Slot 2



3 Point Sources



A Summary

A.1 Status

V&V Scientist	Jen Lauer
V&V Date (YYYY-MM-DD)	2006.09.18
V&V Edition	1
V&V Disposition and Status	OK
V&V Charge Time	15.131

A.2 Comments