

V&V Reference Report

L2 ASCDS Version : 7.6.9

Observation 3213 - L2 Version 001
Chandra X-Ray Center

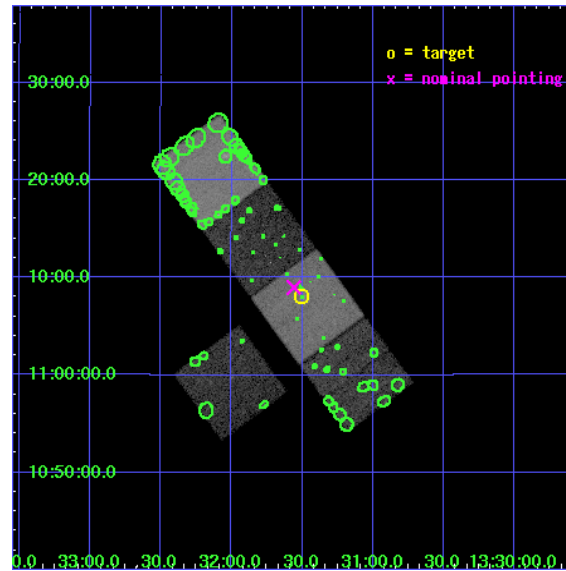
L2 Processing Date : Oct 13 2006

Contents

1	Front	2
2	OBI	3
2.1	OBI	3
2.1.1	Images	3
2.1.2	Bias	3
2.1.3	Parameters	4
2.1.4	Events	4
2.2	Compared Parameters	5
2.3	Aspect	6
2.4	Star Slots	9
2.4.1	Slot 3	9
2.4.2	Slot 4	10
2.4.3	Slot 5	11
2.4.4	Slot 6	12
2.4.5	Slot 7	13
2.5	FID Slots	14
2.5.1	Slot 0	14
2.5.2	Slot 1	15
2.5.3	Slot 2	16
3	Point Sources	17
A	Summary	18
A.1	Status	18
A.2	Comments	18

1 Front

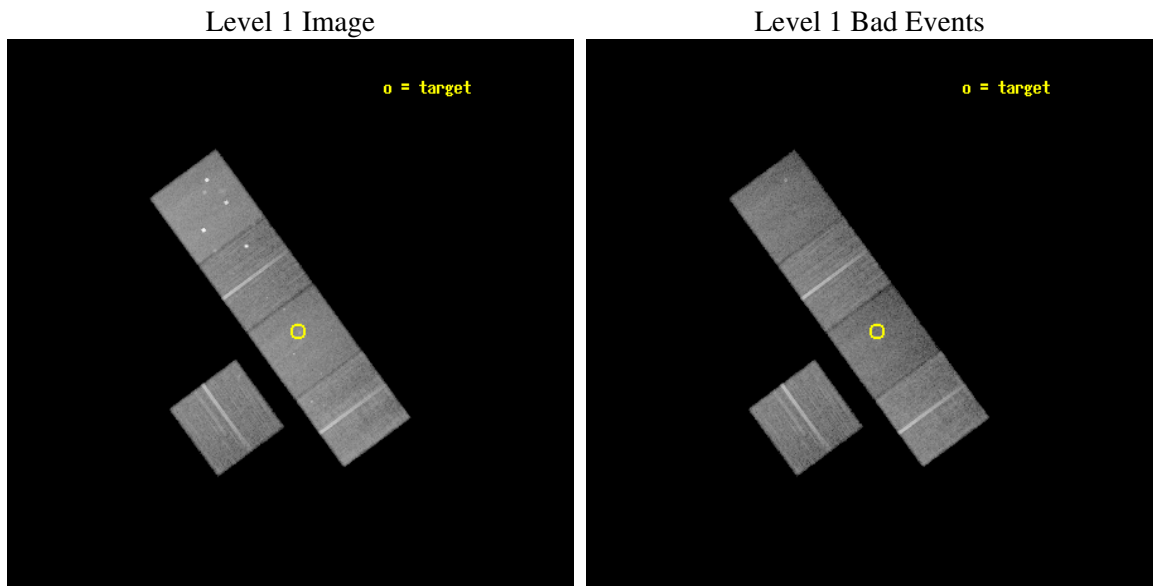
seq_num	800213
obs_id	3213
title	THE X-RAY STRUCTURE OF OLD, HIGH LUMINOSITY FOSSIL GALAXY GROUPS
observer	Dr Laurence Jones
object	RXJ1331.5+1108
dtcycle	0
cycle	P
ra_targ	202.875833
dec_targ	11.134167
ra_nom	202.88971018812
dec_nom	11.149833160067
roll_nom	53.747765273951
revision	3
ontime	31102.299940199
livetime	30695.9254943
ontime3	31102.299940199
ontime5	31102.299940199
ontime6	31092.877019614
ontime7	31102.299940199
ontime8	31099.159079641
l2events	232006



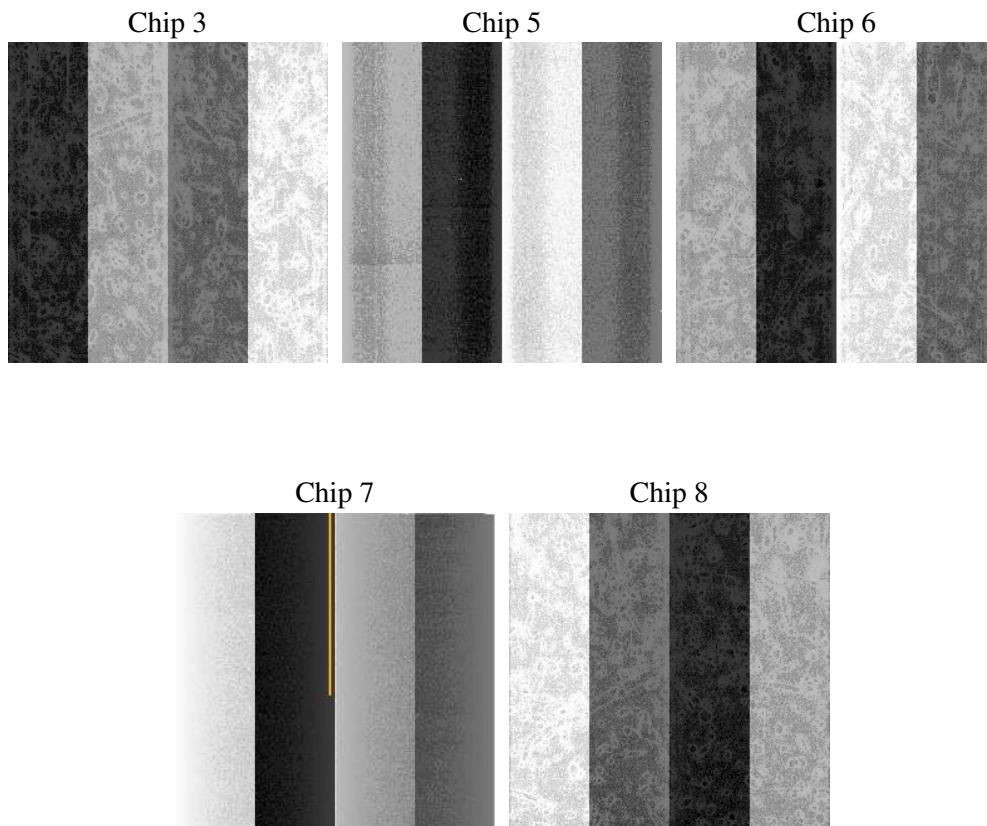
2 OBI

2.1 OBI

2.1.1 Images



2.1.2 Bias



2.1.3 Parameters

obi_num	0
ascdsver	7.6.9
caldbver	3.2.3
date	2006-10-13T20:01:00
revision	3

sched_exp_time	31000.000000
ontime	31108.468177557
ontime3	31111.609167755
ontime5	31108.468177557
ontime6	31102.18624717
ontime7	31108.468177557
ontime8	31108.468307197
l1events	969382

2.1.4 Events

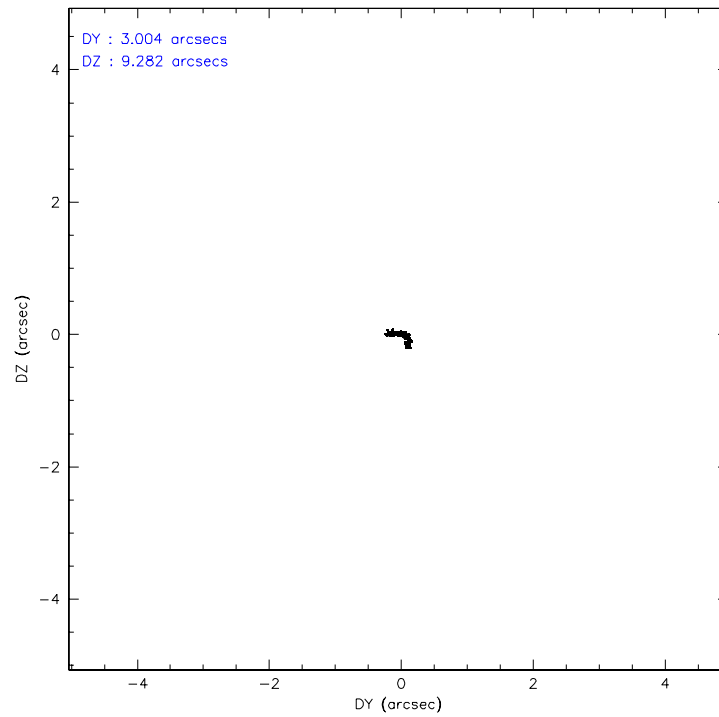
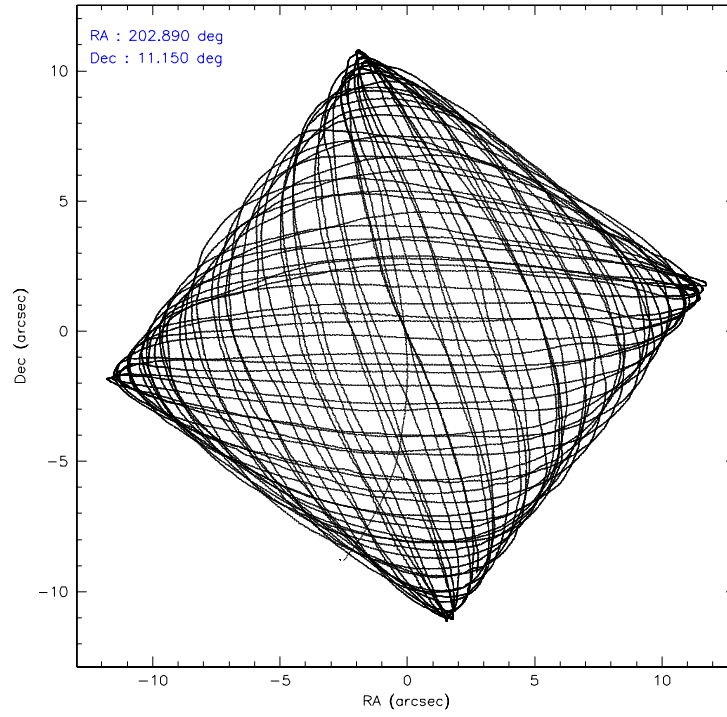
	ccd 3	ccd 5	ccd 6	ccd 7	ccd 8
level 1 events	168491	230148	175659	184416	210668
rejected events	152954	113298	154052	103825	164184
rejected %	90%	49%	87%	56%	77%

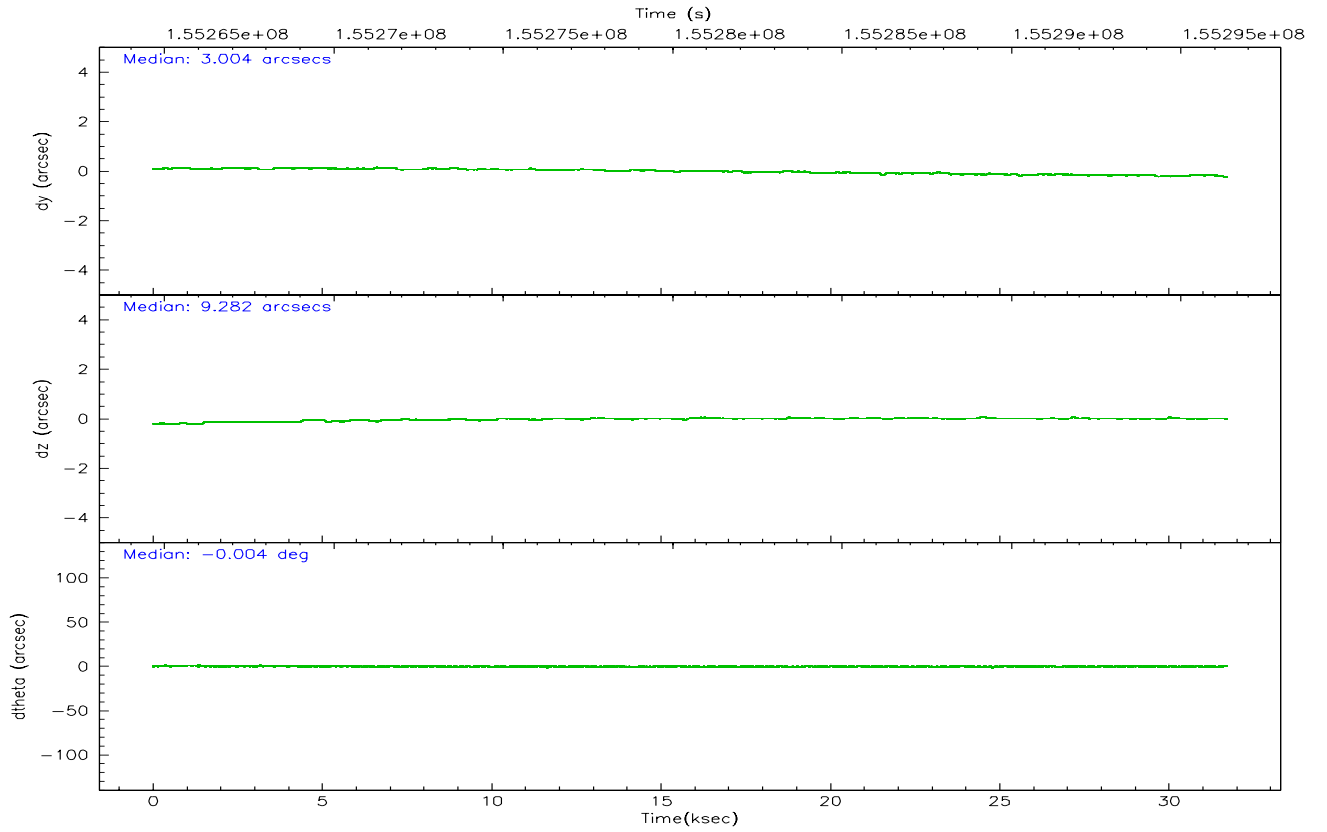
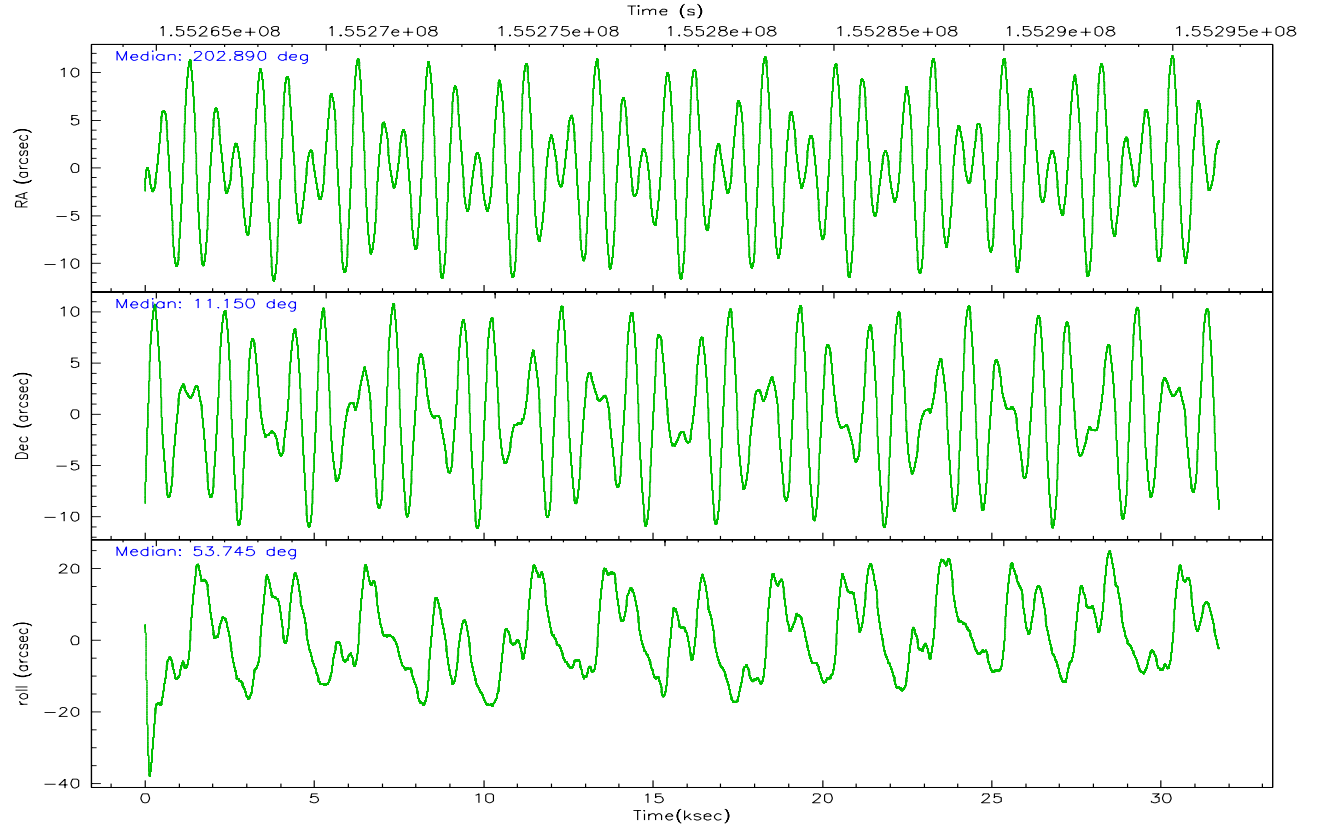
	ccd 3	ccd 5	ccd 6	ccd 7	ccd 8
grade 0 events	5751	17435	9482	6190	15024
	3%	7%	5%	3%	7%
grade 1 events	83	398	97	90	137
	0%	0%	0%	0%	0%
grade 2 events	3159	34358	4172	19756	9982
	1%	14%	2%	10%	4%
grade 3 events	1842	3106	2134	5048	5024
	1%	1%	1%	2%	2%
grade 4 events	1809	3022	2035	4868	4605
	1%	1%	1%	2%	2%
grade 5 events	6084	11936	6599	13691	9076
	3%	5%	3%	7%	4%
grade 6 events	2980	58954	3788	44746	11854
	1%	25%	2%	24%	5%
grade 7 events	146783	100939	147352	90027	154966
	87%	43%	83%	48%	73%

2.2 Compared Parameters

Parameter	Planned	Actual	Parameter	Planned	Actual
Instrument	ACIS	ACIS	Obspar format version number	6	6
Detector	ACIS-35678	ACIS-35678	Obspar file type	PREDICTED	ACTUAL
Grating	NONE	NONE	Obspar update status	NONE	UPDATED
Data mode	VFAINT	VFAINT	Number of optional ACIS chips dropped	0	0
Observation mode	POINTING	POINTING	On-chip summing requested	N	N
Pointing RA	202.887078	202.8897101881161	Subarray requested	NONE	NONE
Pointing Dec	11.122721	11.14983316006741	Alternating exposures requested	N	N
Pointing Roll	53.591625	53.74776527395109	Primary exposure time	0.000000	3.1
SIM focus pos (mm)	-0.684267	-0.6828225247311905			
SIM defocus (mm)	0	0.001444936568705701			
SIM translation stage pos (mm)	-190.132523	-190.1400660498719			
SIM translation stage offset (mm)	0	0.00754346686406393			
Observation start time	155265374.184000	155264143.90033			
Observation start date	2002-12-03T01:15:10	2002-12-03T00:55:43			
Observation end time	155296374.184000	155297260.62672			
Observation end date	2002-12-03T09:51:50	2002-12-03T10:07:40			
Read mode	TIMED	TIMED			

2.3 Aspect



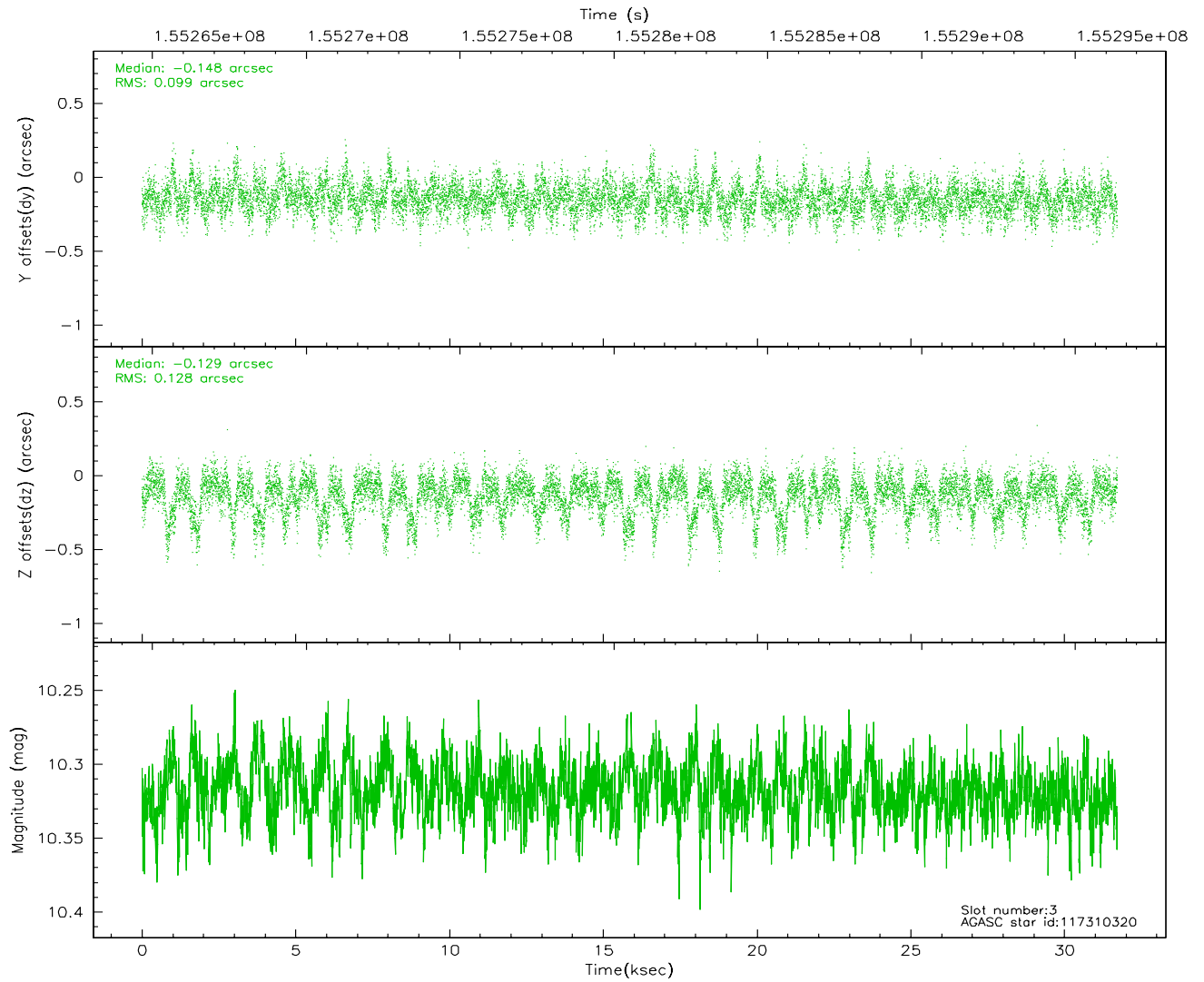
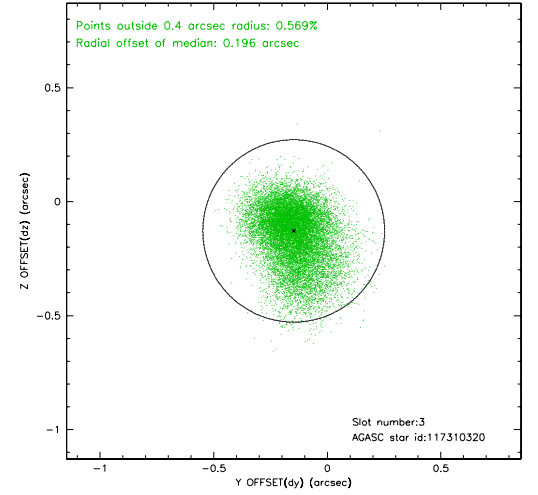
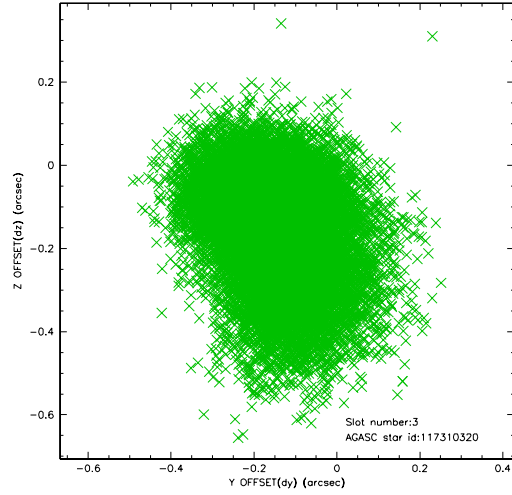


Slot Statistics

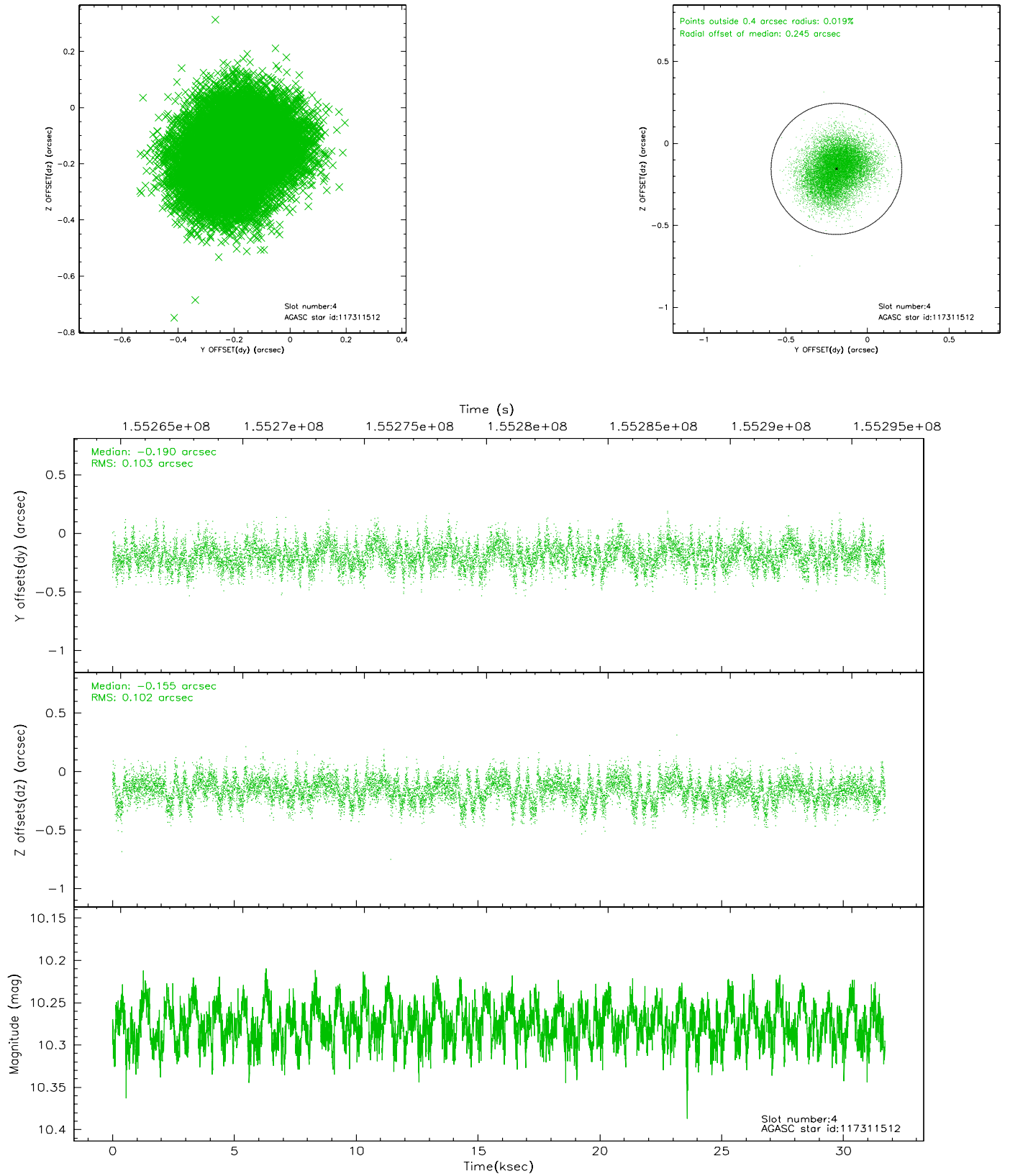
slot	status	id	mag	n_pts	med_dy	med_dz	dr1	dr2	ra	dec	mean_y	mean_z
0	FID	ACIS-S-2	7.11	7737	-0.021	0.016	0.007	0.011	0.000000	0.000000	-755.64	-1730.47
1	FID	ACIS-S-4	7.20	7736	-0.031	0.006	0.007	0.011	0.000000	0.000000	2157.58	177.96
2	FID	ACIS-S-5	7.24	7737	0.021	-0.013	0.008	0.014	0.000000	0.000000	-1808.38	171.65
3	GUIDE	117310320	10.32	15460	-0.148	-0.129	0.167	0.293	202.797846	11.596939	1187.01	1266.29
4	GUIDE	117311512	10.28	15456	-0.190	-0.155	0.157	0.247	202.932611	11.534124	1287.08	749.68
5	GUIDE	117312064	10.19	15309	0.273	0.130	0.194	0.304	202.914804	10.352583	-2172.67	-1724.70
6	GUIDE	117313072	9.42	15468	0.073	-0.223	0.089	0.144	202.592703	10.931503	-1171.26	428.58
7	GUIDE	117313656	10.58	15159	0.020	0.403	0.290	0.460	203.017596	10.738194	-839.97	-1192.85

2.4 Star Slots

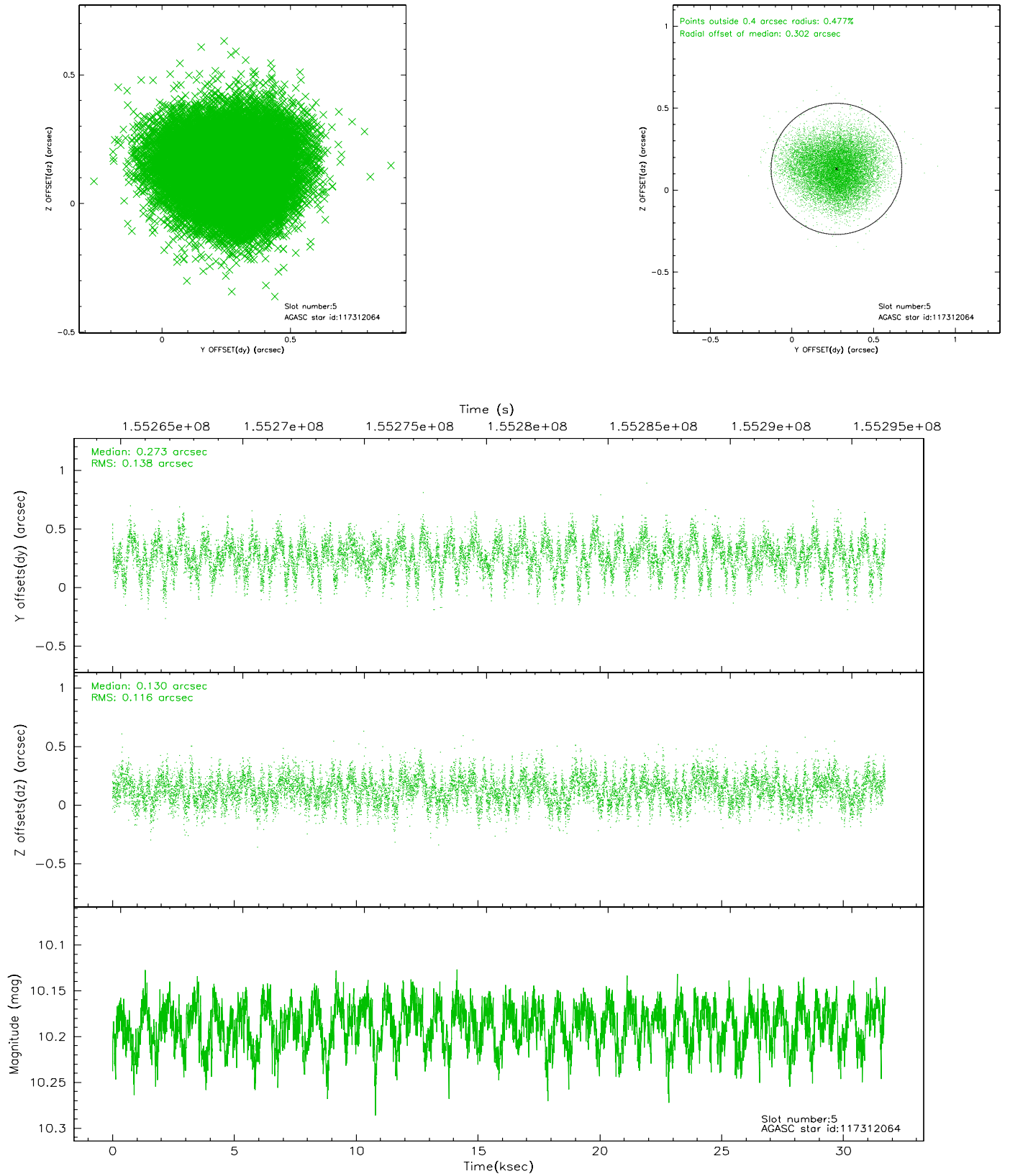
2.4.1 Slot 3



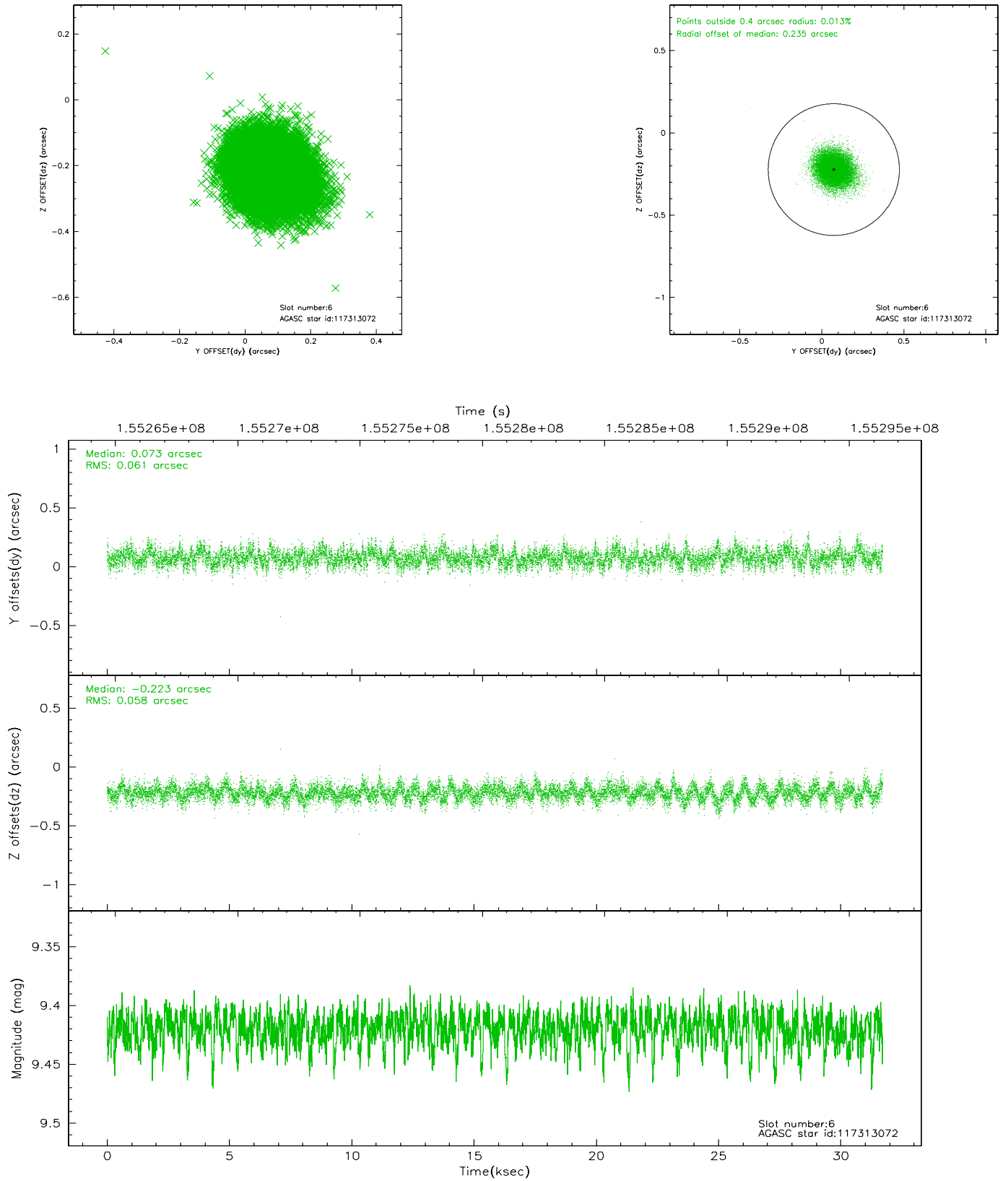
2.4.2 Slot 4



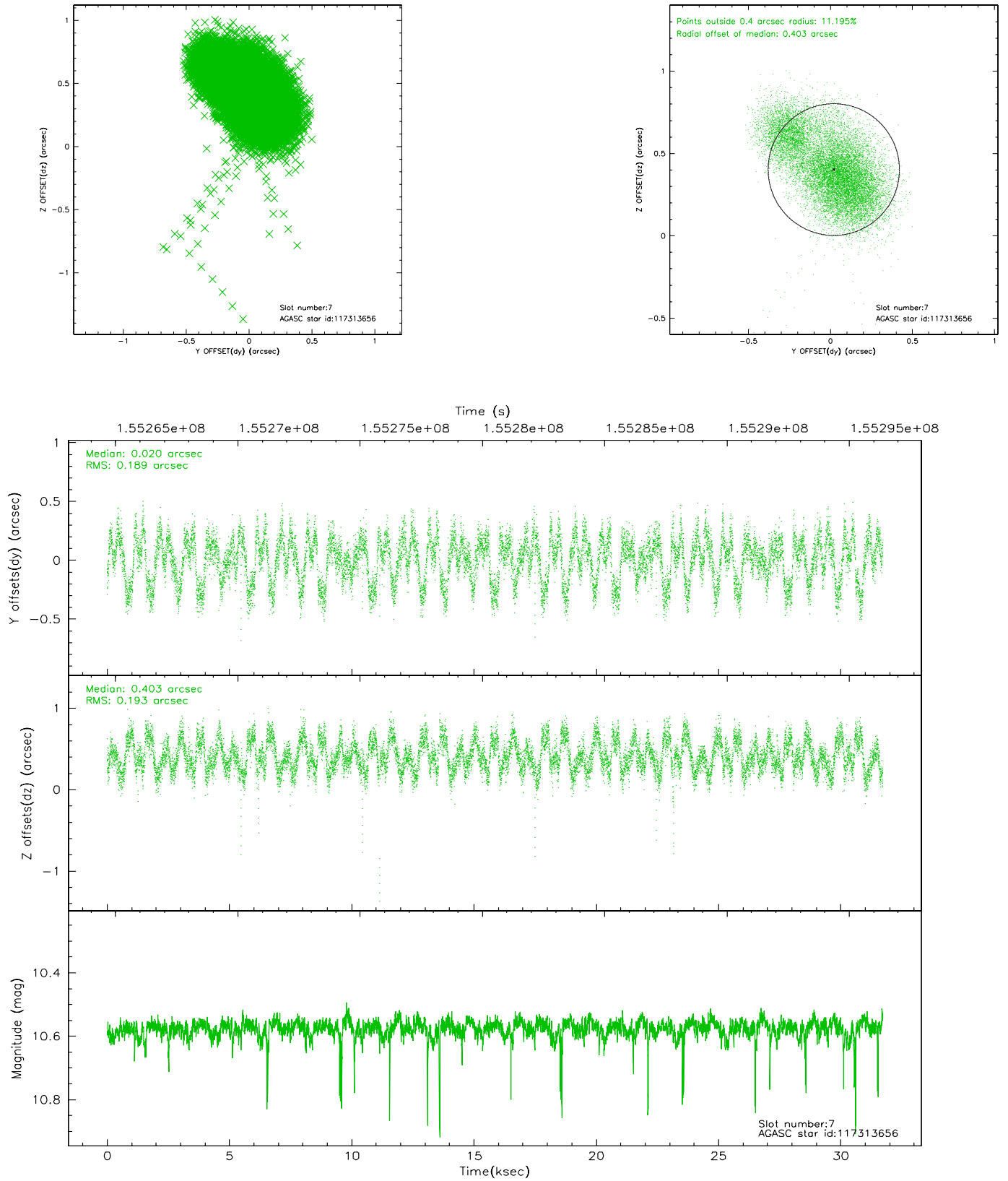
2.4.3 Slot 5



2.4.4 Slot 6

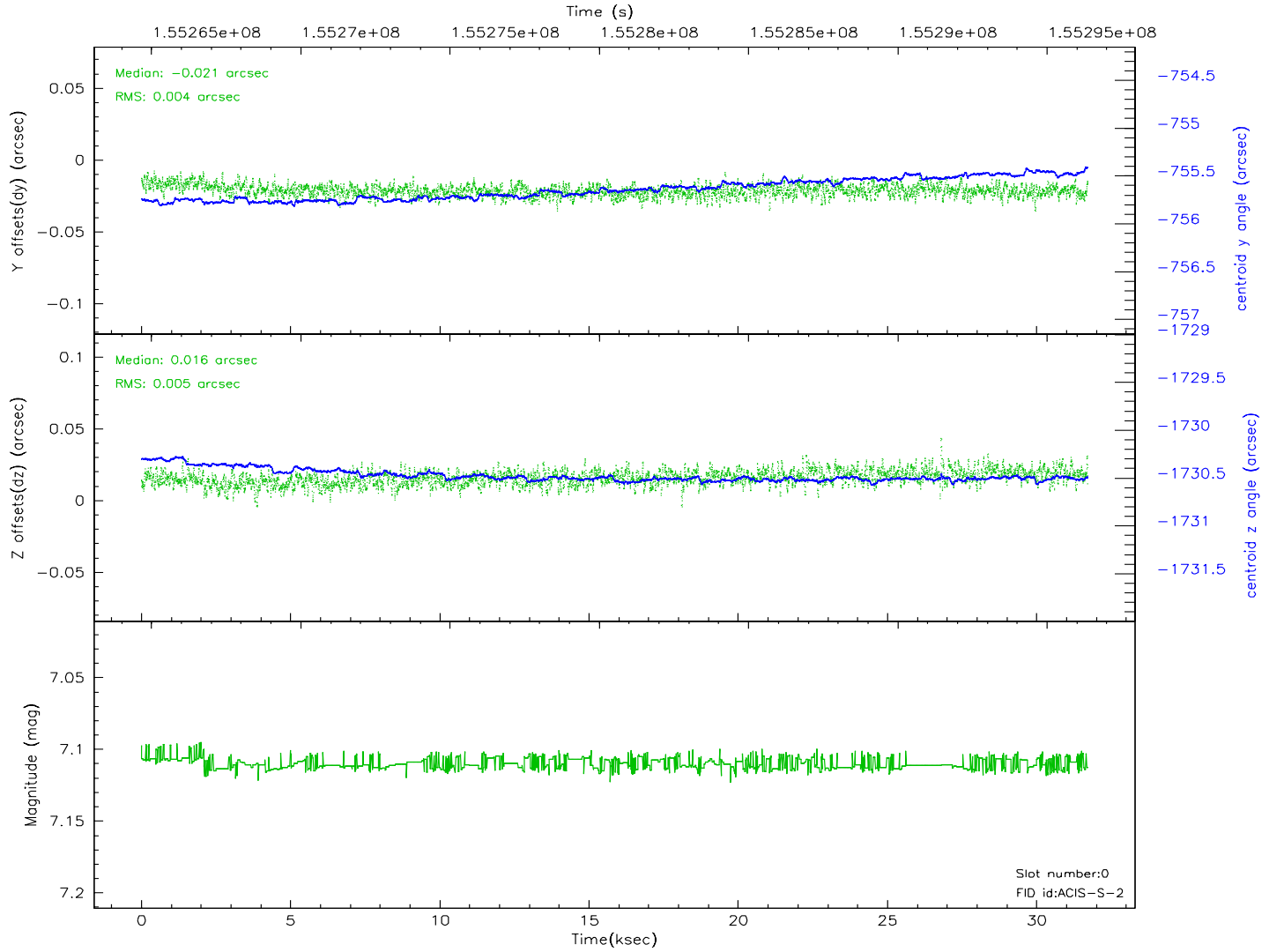
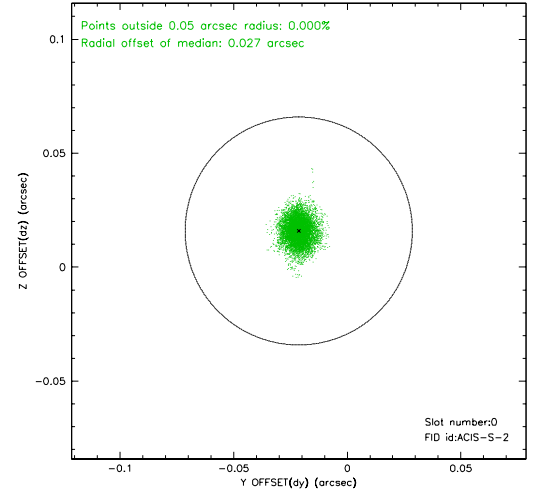
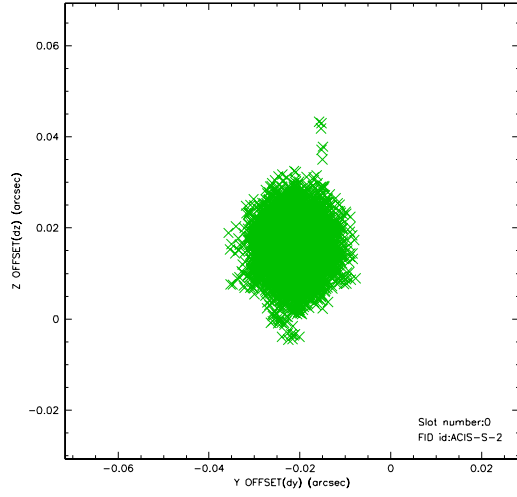


2.4.5 Slot 7

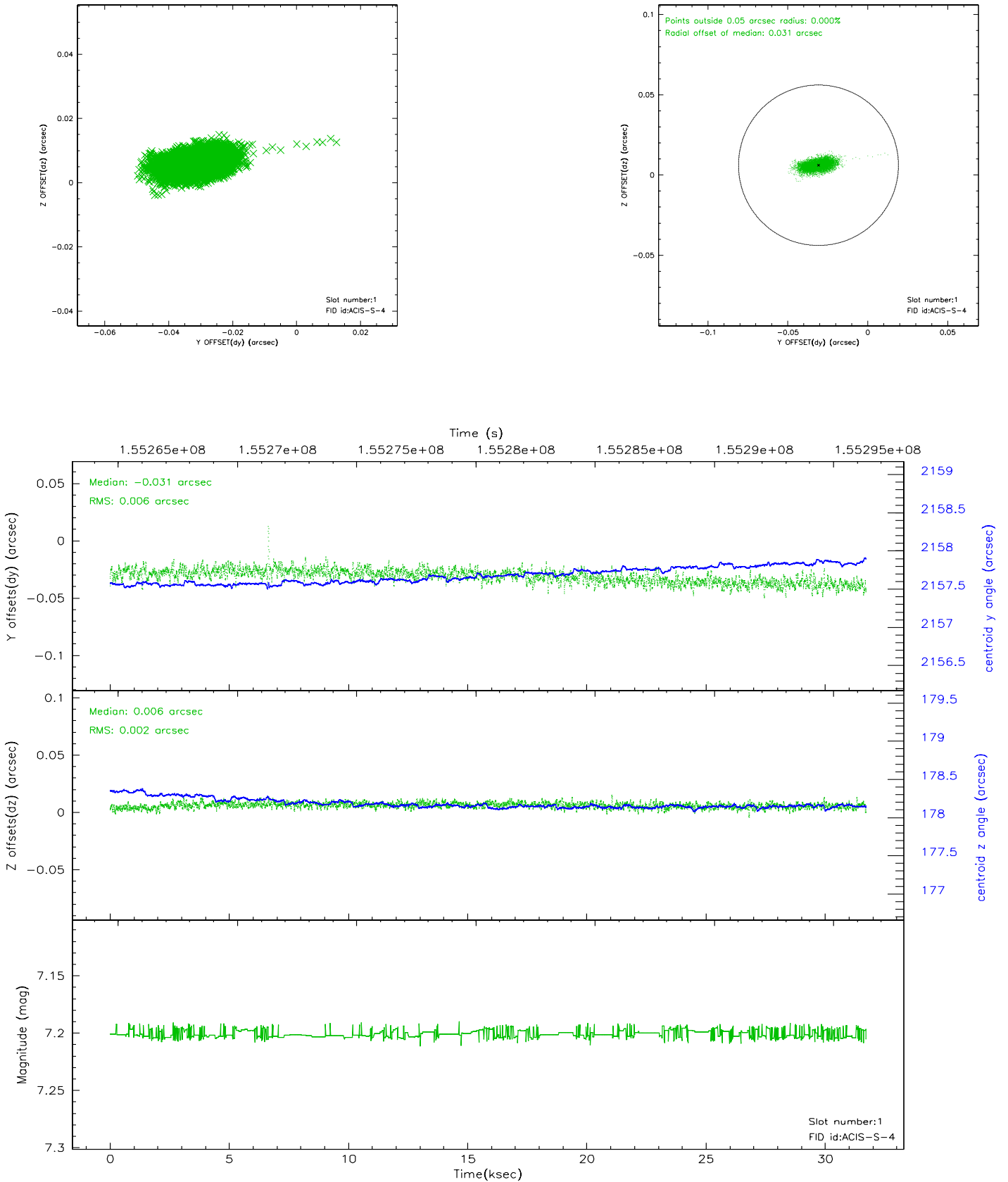


2.5 FID Slots

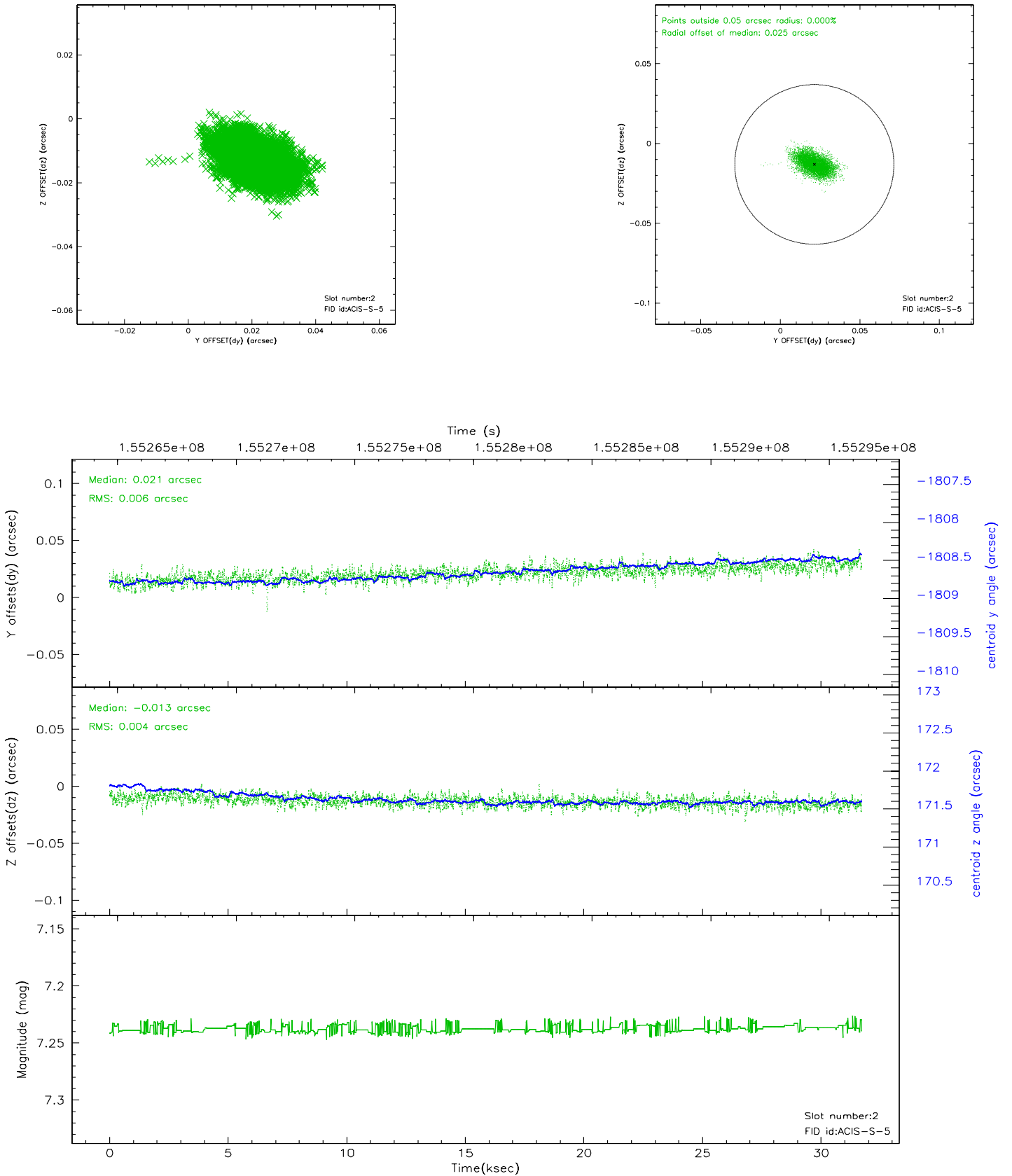
2.5.1 Slot 0



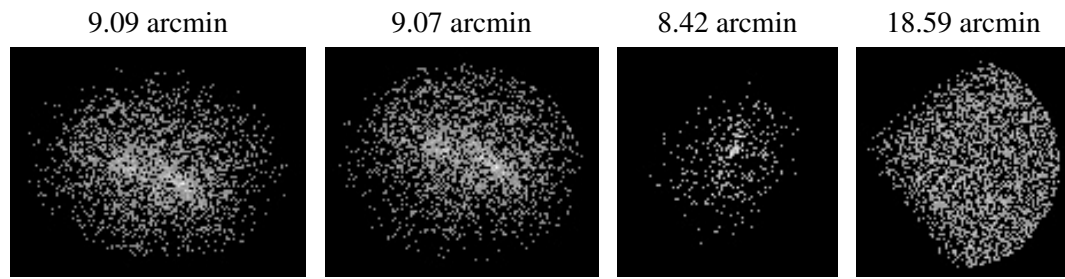
2.5.2 Slot 1



2.5.3 Slot 2



3 Point Sources



A Summary

A.1 Status

V&V Scientist	Beth Sundheim
V&V Date (YYYY-MM-DD)	2006.10.15
V&V Edition	1
V&V Disposition and Status	OK
V&V Charge Time	31.105

A.2 Comments