

V&V Reference Report

L2 ASCDS Version : 7.6.9

Observation 3201 - L2 Version 001
Chandra X-Ray Center

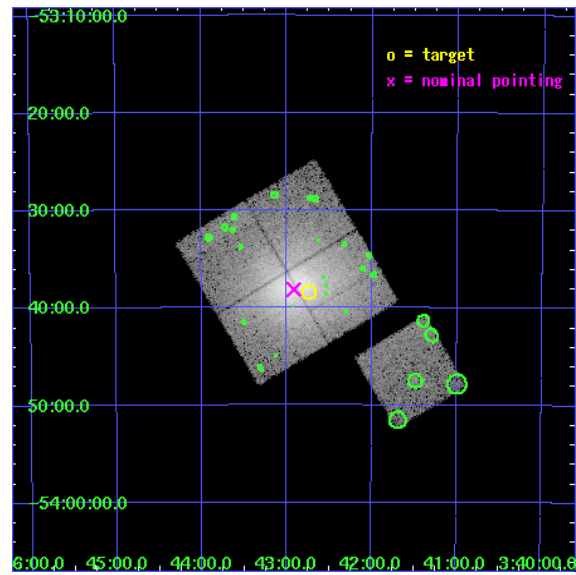
L2 Processing Date : Sep 20 2006

Contents

1	Front	2
2	OBI	3
2.1	OBI	3
2.1.1	Images	3
2.1.2	Bias	3
2.1.3	Parameters	4
2.1.4	Events	4
2.2	Compared Parameters	5
2.3	Aspect	6
2.4	Star Slots	9
2.4.1	Slot 3	9
2.4.2	Slot 4	10
2.4.3	Slot 5	11
2.4.4	Slot 6	12
2.4.5	Slot 7	13
2.5	FID Slots	14
2.5.1	Slot 0	14
2.5.2	Slot 1	15
2.5.3	Slot 2	16
3	Point Sources	17
A	Summary	18
A.1	Status	18
A.2	Comments	18

1 Front

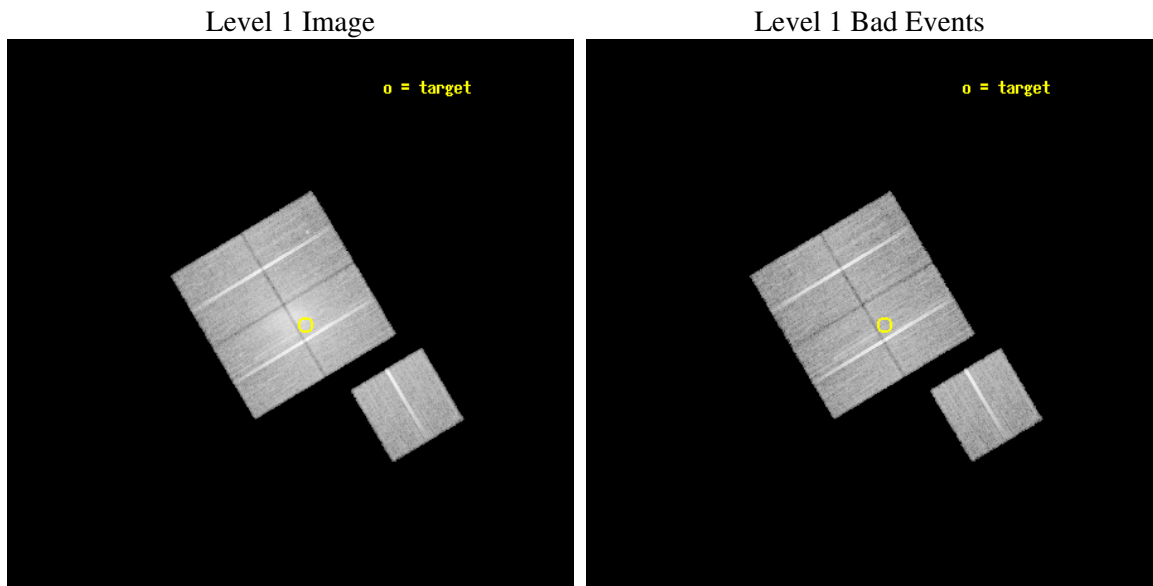
seq_num	800201
obs_id	3201
title	GAS DENSITY DISCONTINUITIES IN MERGING CLUSTERS
observer	Dr Maxim Markevitch
object	A3158
dtcycle	0
cycle	P
ra_targ	55.682917
dec_targ	-53.641
ra_nom	55.728853212995
dec_nom	-53.635802932688
roll_nom	149.24566616741
revision	2
ontime	25113.018001348
livetime	24784.897933225
ontime0	25119.299951702
ontime1	25116.158961535
ontime2	25113.018001348
ontime3	25116.158991456
ontime6	25116.158961535
l2events	163955



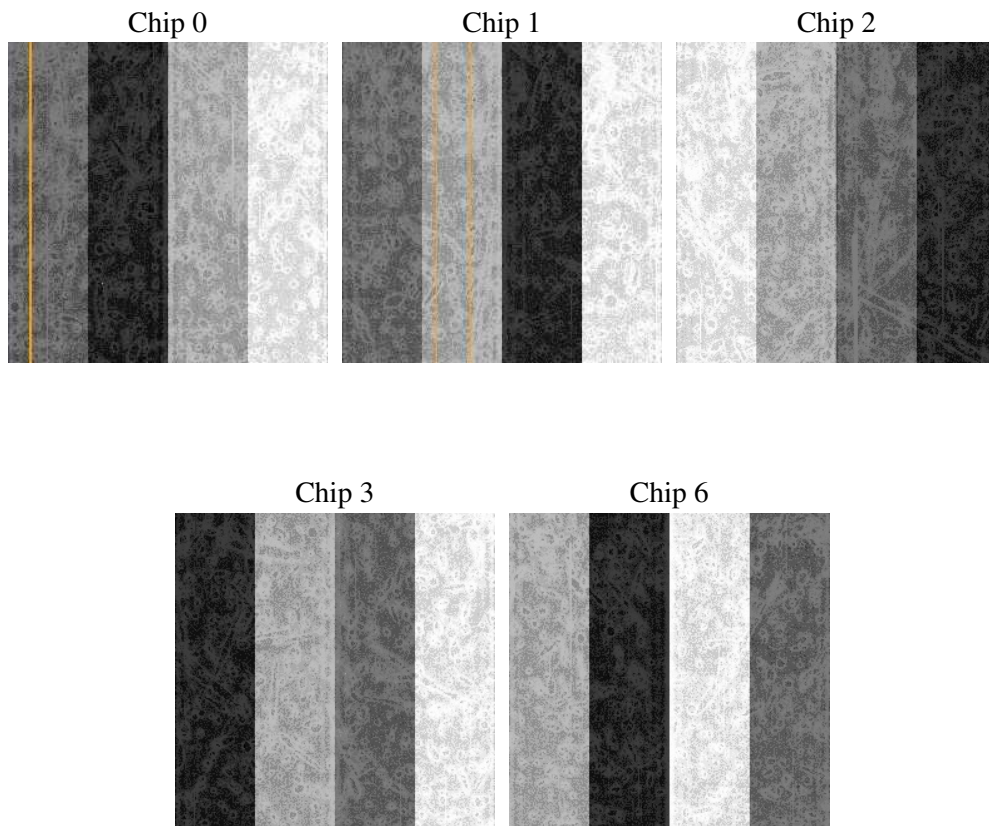
2 OBI

2.1 OBI

2.1.1 Images



2.1.2 Bias



2.1.3 Parameters

obi_num	0
ascdsver	7.6.9
caldbver	3.2.3
date	2006-09-21T00:29:08
revision	2

sched_exp_time	25000.000000
ontime	25118.584429085
ontime0	25124.86637944
ontime1	25121.725389272
ontime2	25118.584429085
ontime3	25121.725419194
ontime6	25121.725389272
l1events	804287

2.1.4 Events

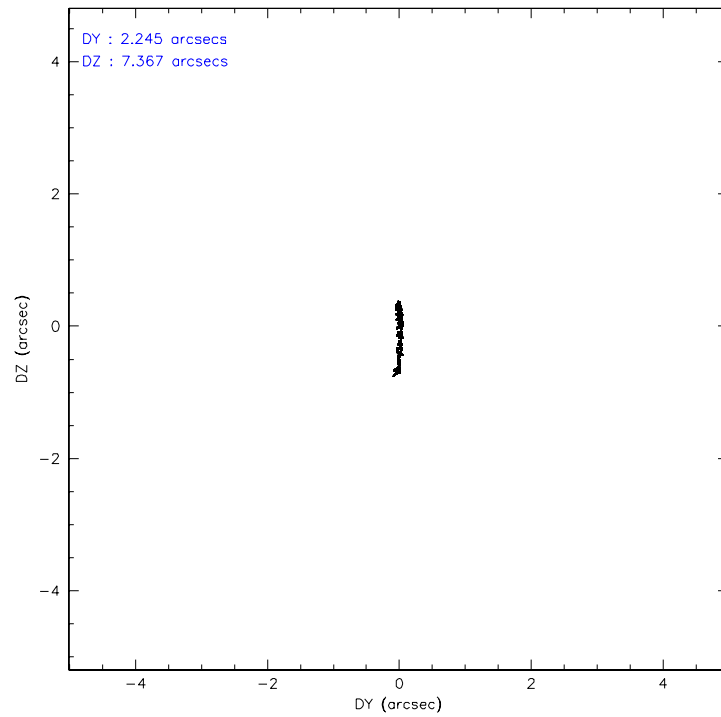
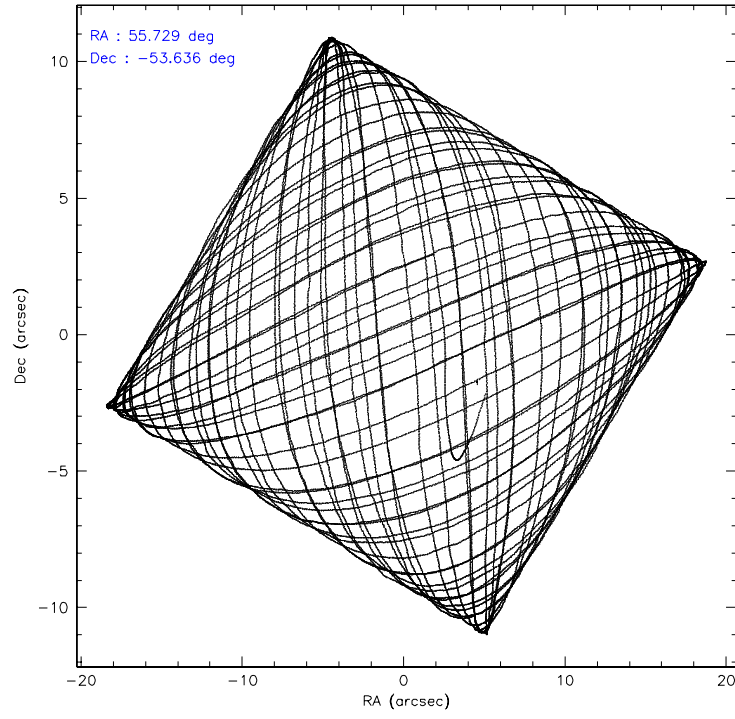
	ccd 0	ccd 1	ccd 2	ccd 3	ccd 6
level 1 events	144928	144191	193074	181885	140209
rejected events	118150	115166	133748	130661	124418
rejected %	81%	79%	69%	71%	88%

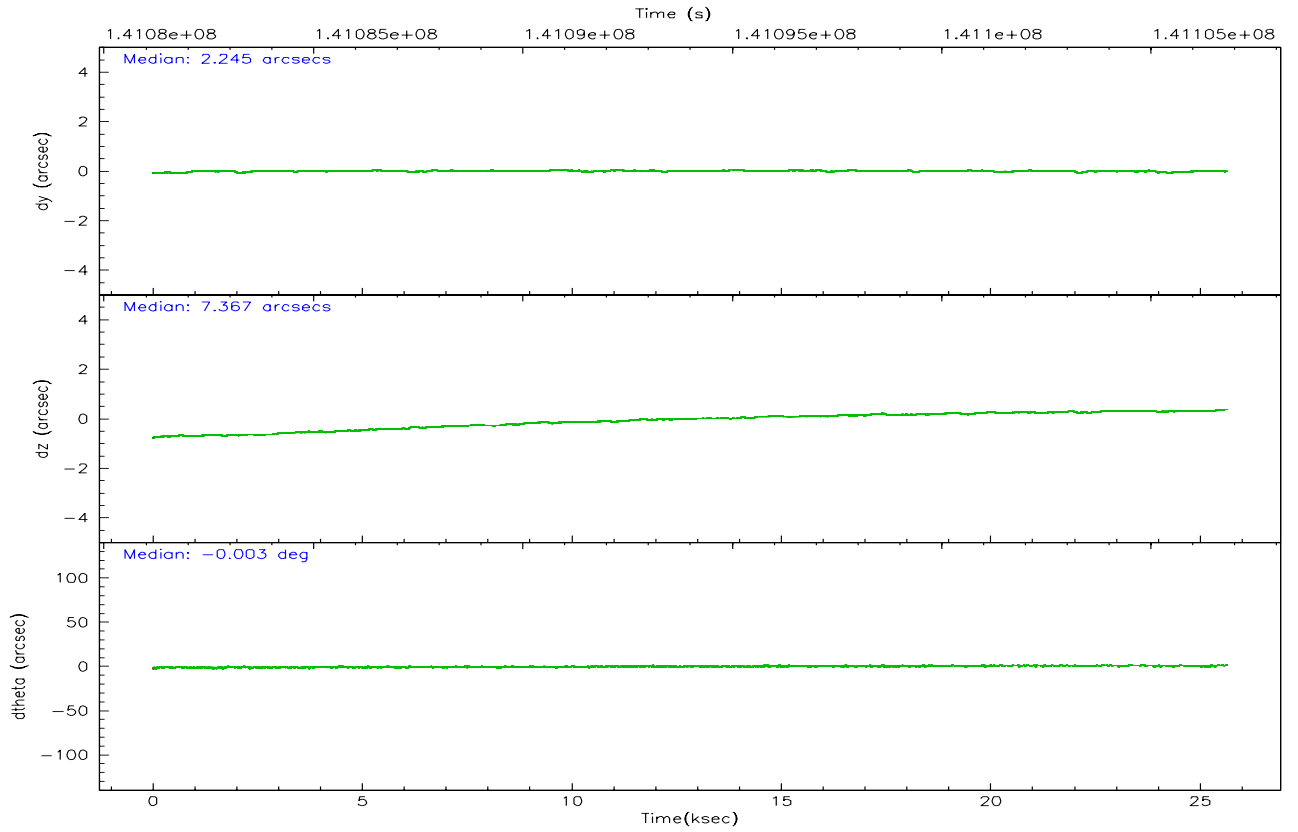
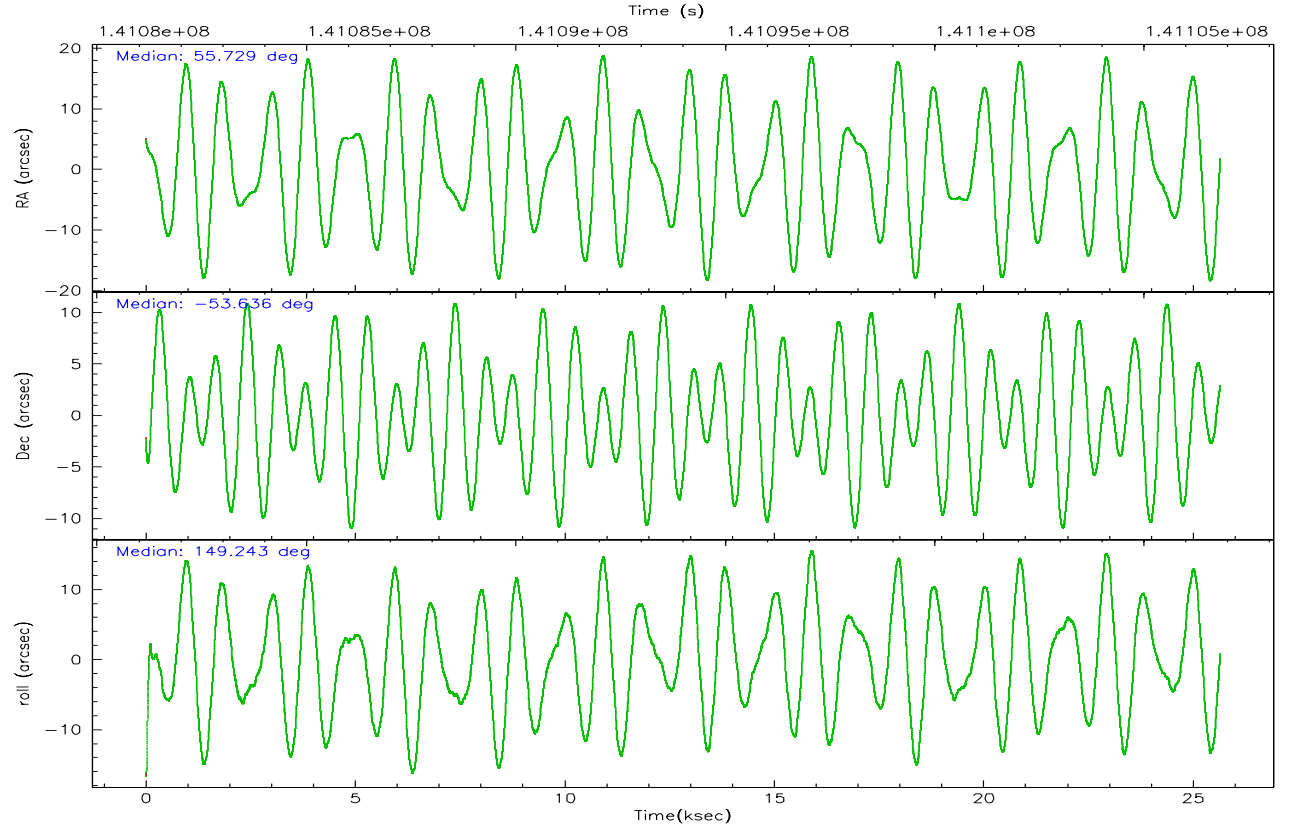
	ccd 0	ccd 1	ccd 2	ccd 3	ccd 6
grade 0 events	15451	17051	42591	35986	6387
	10%	11%	22%	19%	4%
grade 1 events	102	90	217	208	76
	0%	0%	0%	0%	0%
grade 2 events	4531	4453	7622	6537	3071
	3%	3%	3%	3%	2%
grade 3 events	1968	2067	2777	2554	1671
	1%	1%	1%	1%	1%
grade 4 events	1887	2143	2764	2570	1611
	1%	1%	1%	1%	1%
grade 5 events	4644	4991	4383	5175	5228
	3%	3%	2%	2%	3%
grade 6 events	2943	3316	3586	3591	3057
	2%	2%	1%	1%	2%
grade 7 events	113402	110080	129134	125264	119108
	78%	76%	66%	68%	84%

2.2 Compared Parameters

Parameter	Planned	Actual	Parameter	Planned	Actual
Instrument	ACIS	ACIS	Obspar format version number	6	6
Detector	ACIS-01236	ACIS-01236	Obspar file type	PREDICTED	ACTUAL
Grating	NONE	NONE	Obspar update status	NONE	UPDATED
Data mode	VFAINT	VFAINT	Number of optional ACIS chips dropped	0	0
Observation mode	POINTING	POINTING	On-chip summing requested	N	N
Pointing RA	55.775092	55.72885321299524	Subarray requested	NONE	NONE
Pointing Dec	-53.636083	-53.63580293268753	Alternating exposures requested	N	N
Pointing Roll	149.074220	149.2456661674104	Primary exposure time	0.000000	3.1
SIM focus pos (mm)	-0.782348	-0.7809083437167272			
SIM defocus (mm)	0	0.001439871863259334			
SIM translation stage pos (mm)	-229.592463	-229.5871588160467			
SIM translation stage offset (mm)	-4	-4.005294186882963			
Observation start time	141081813.184000	141080624.83916			
Observation start date	2002-06-21T21:22:29	2002-06-21T21:03:44			
Observation end time	141106813.184000	141107171.31525			
Observation end date	2002-06-22T04:19:09	2002-06-22T04:26:11			
Read mode	TIMED	TIMED			

2.3 Aspect



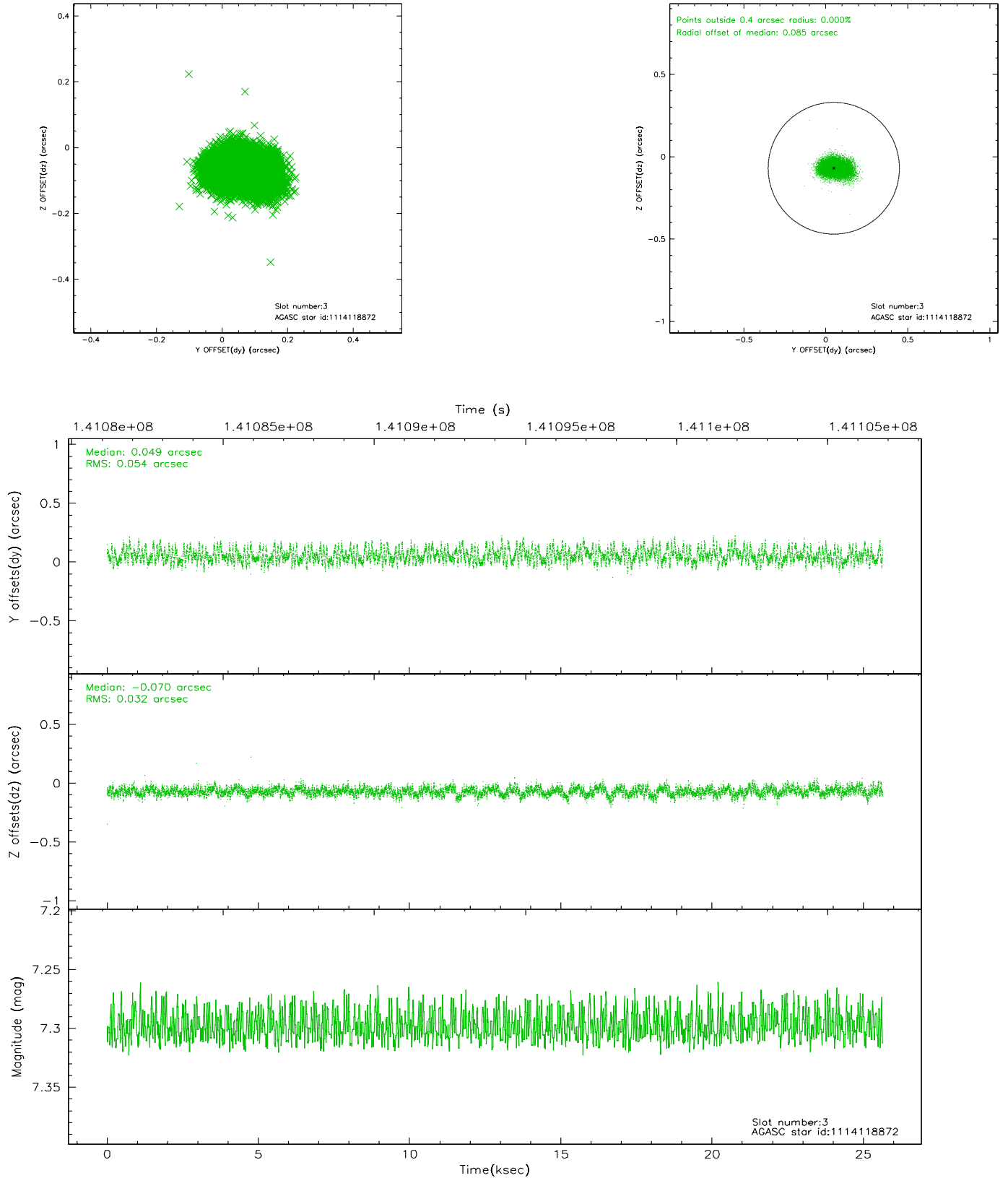


Slot Statistics

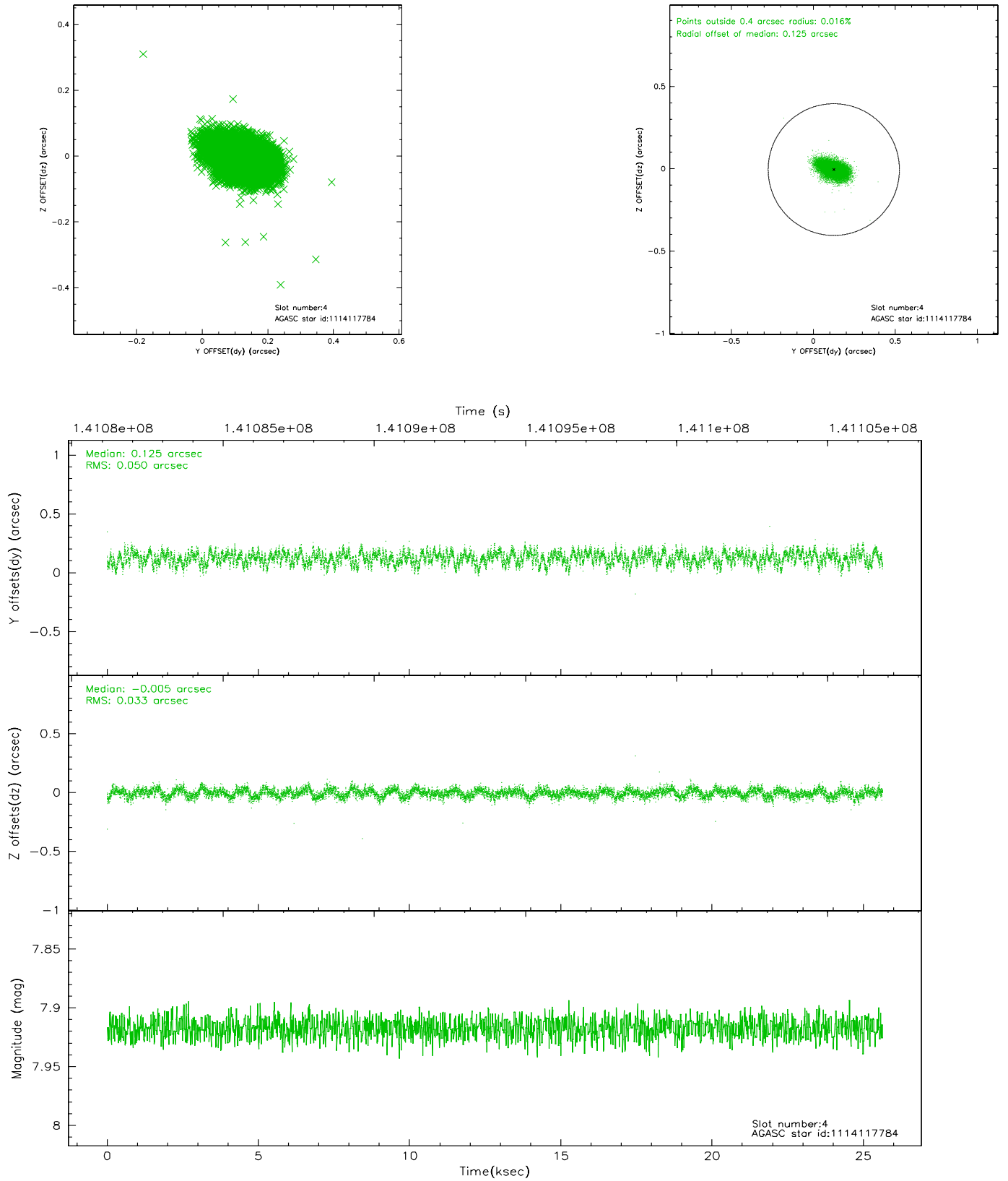
slot	status	id	mag	n_pts	med_dy	med_dz	dr1	dr2	ra	dec	mean_y	mean_z
0	FID	ACIS-I-3	7.42	6254	-0.036	0.236	0.008	0.014	0.000000	0.000000	54.89	-1045.85
1	FID	ACIS-I-5	7.24	6253	-0.082	-0.031	0.008	0.012	0.000000	0.000000	-1810.79	984.47
2	FID	ACIS-I-6	7.26	6255	0.026	-0.137	0.008	0.012	0.000000	0.000000	402.91	1629.06
3	GUIDE	1114118872	7.30	12509	0.049	-0.070	0.066	0.110	56.068532	-54.477824	-2084.30	2285.33
4	GUIDE	1114117784	7.92	12508	0.125	-0.005	0.063	0.105	56.191874	-54.166281	-1735.56	1188.85
5	GUIDE	1114120328	8.01	12508	-0.050	-0.035	0.062	0.096	55.167791	-53.738234	917.36	985.44
6	GUIDE	1114119656	9.33	12497	-0.022	0.113	0.068	0.114	55.642480	-53.276810	909.87	-961.68
7	GUIDE	1114113800	9.61	12502	-0.104	-0.000	0.120	0.204	54.861207	-53.366759	2176.07	188.60

2.4 Star Slots

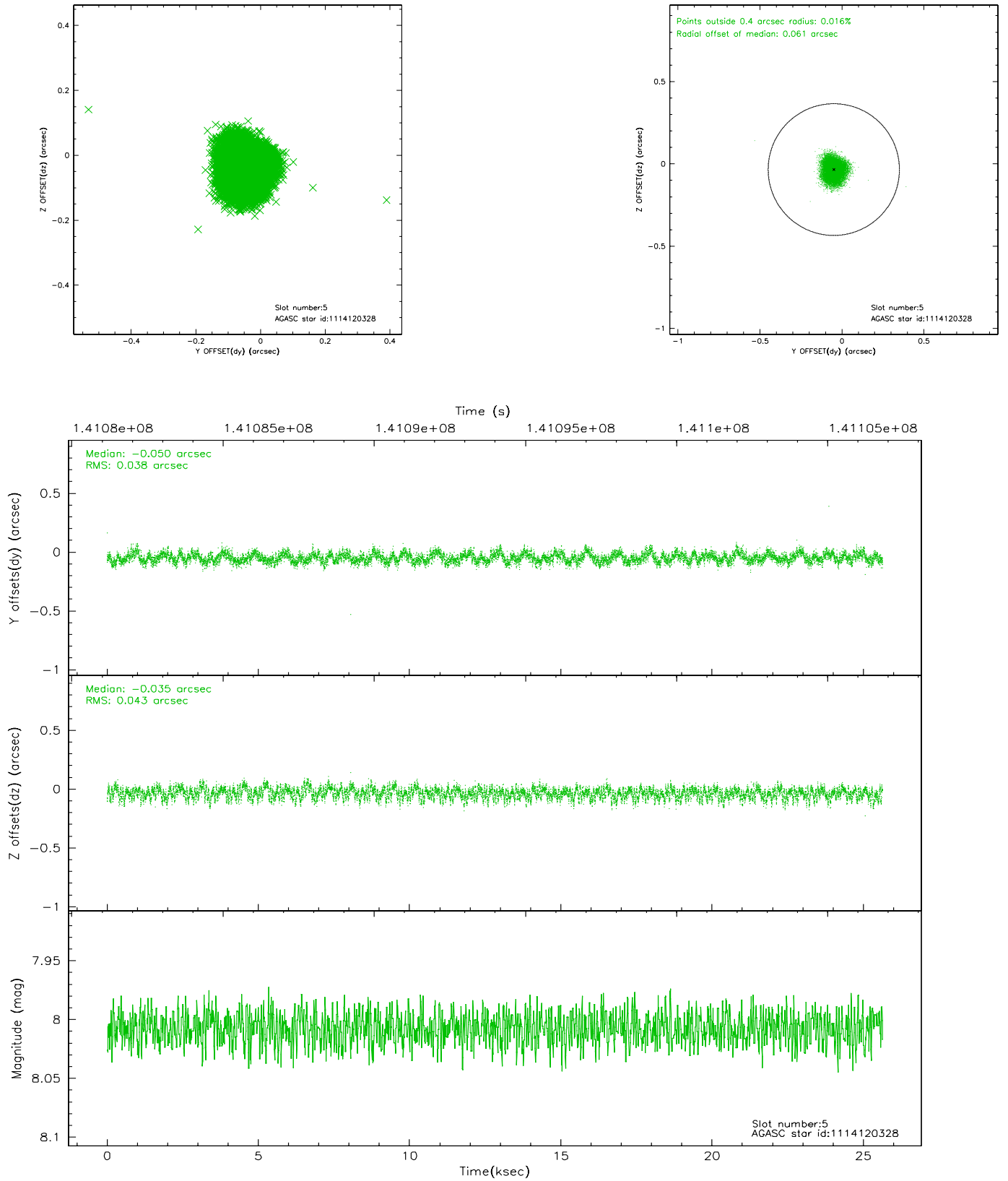
2.4.1 Slot 3



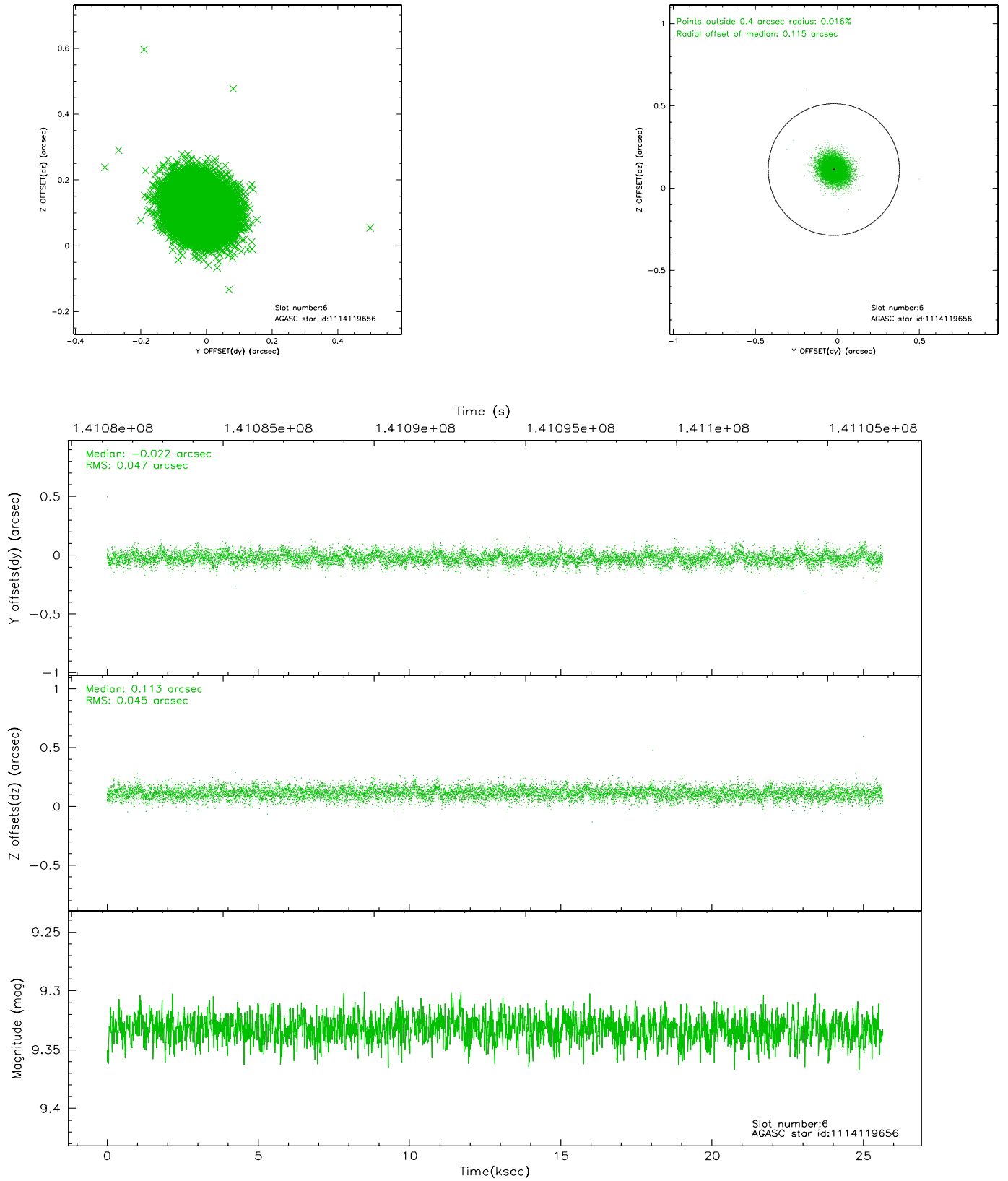
2.4.2 Slot 4



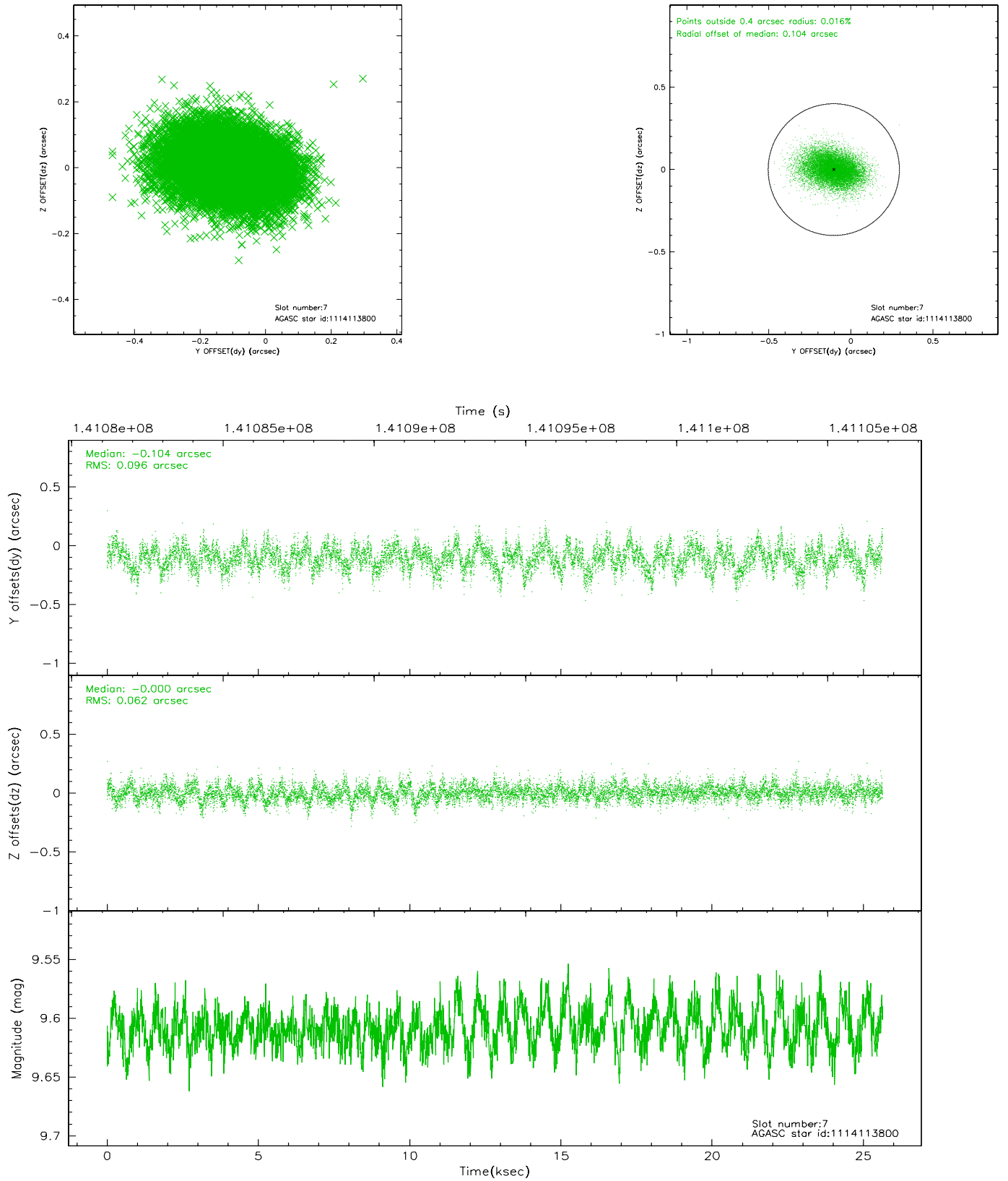
2.4.3 Slot 5



2.4.4 Slot 6

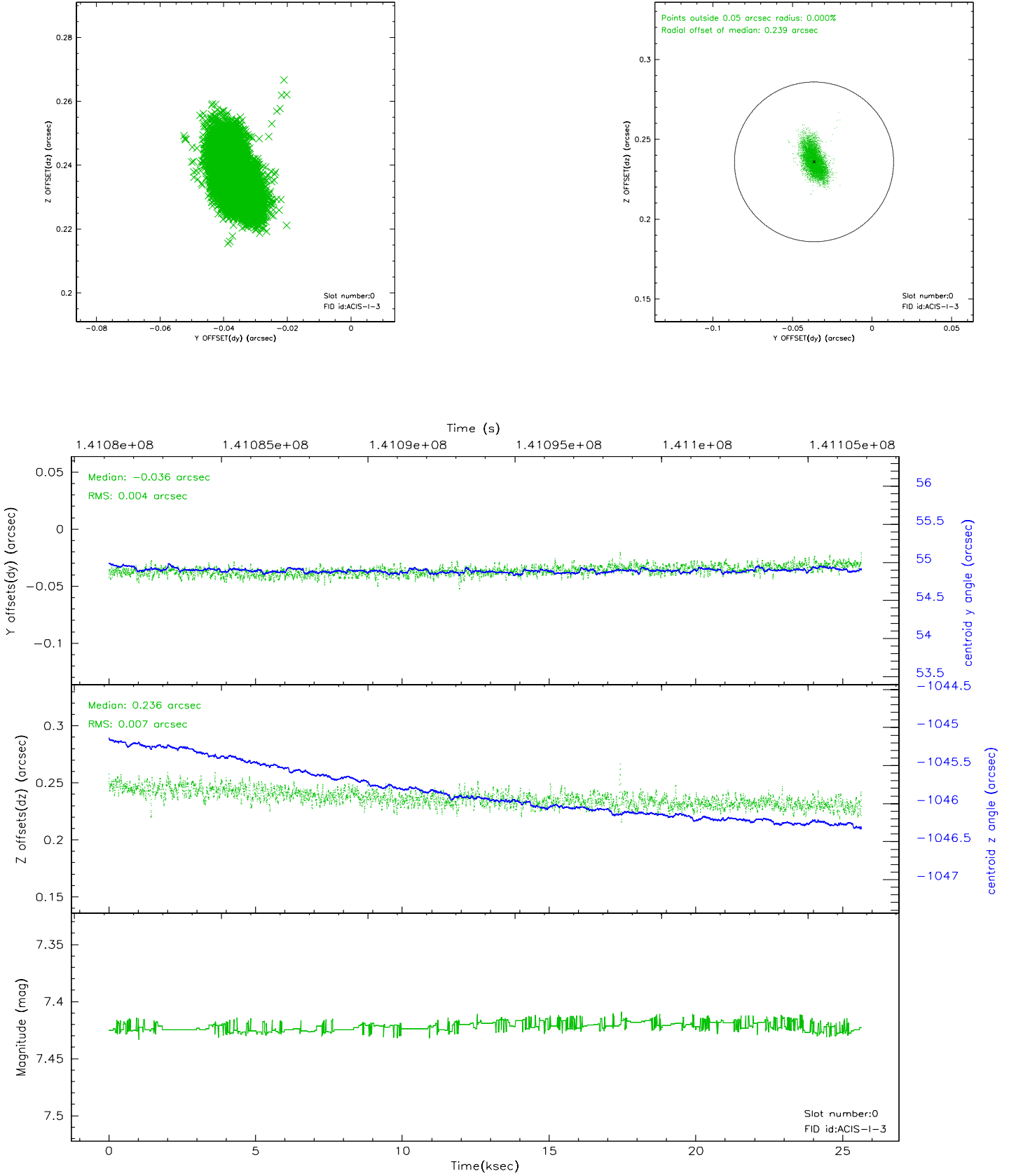


2.4.5 Slot 7

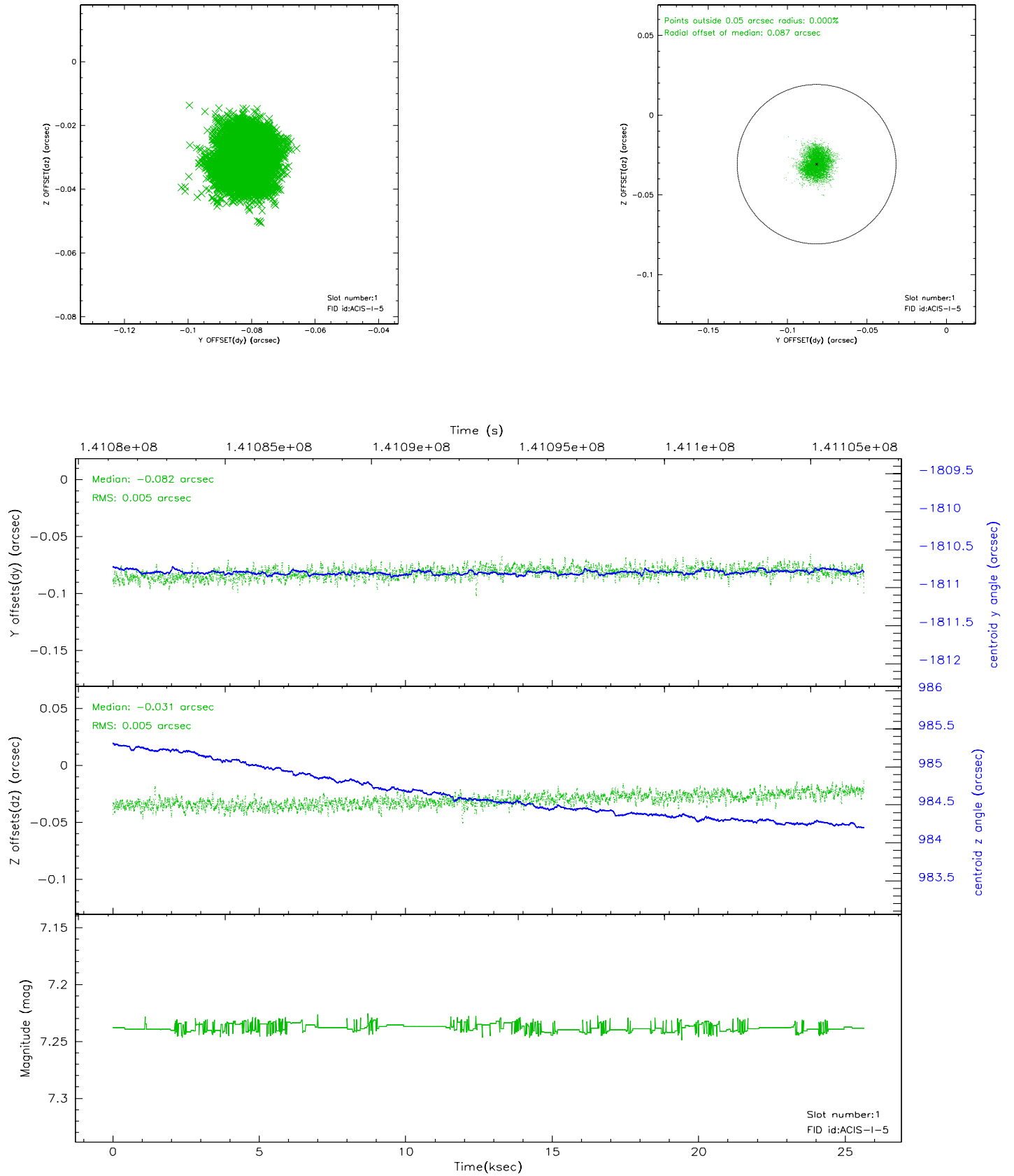


2.5 FID Slots

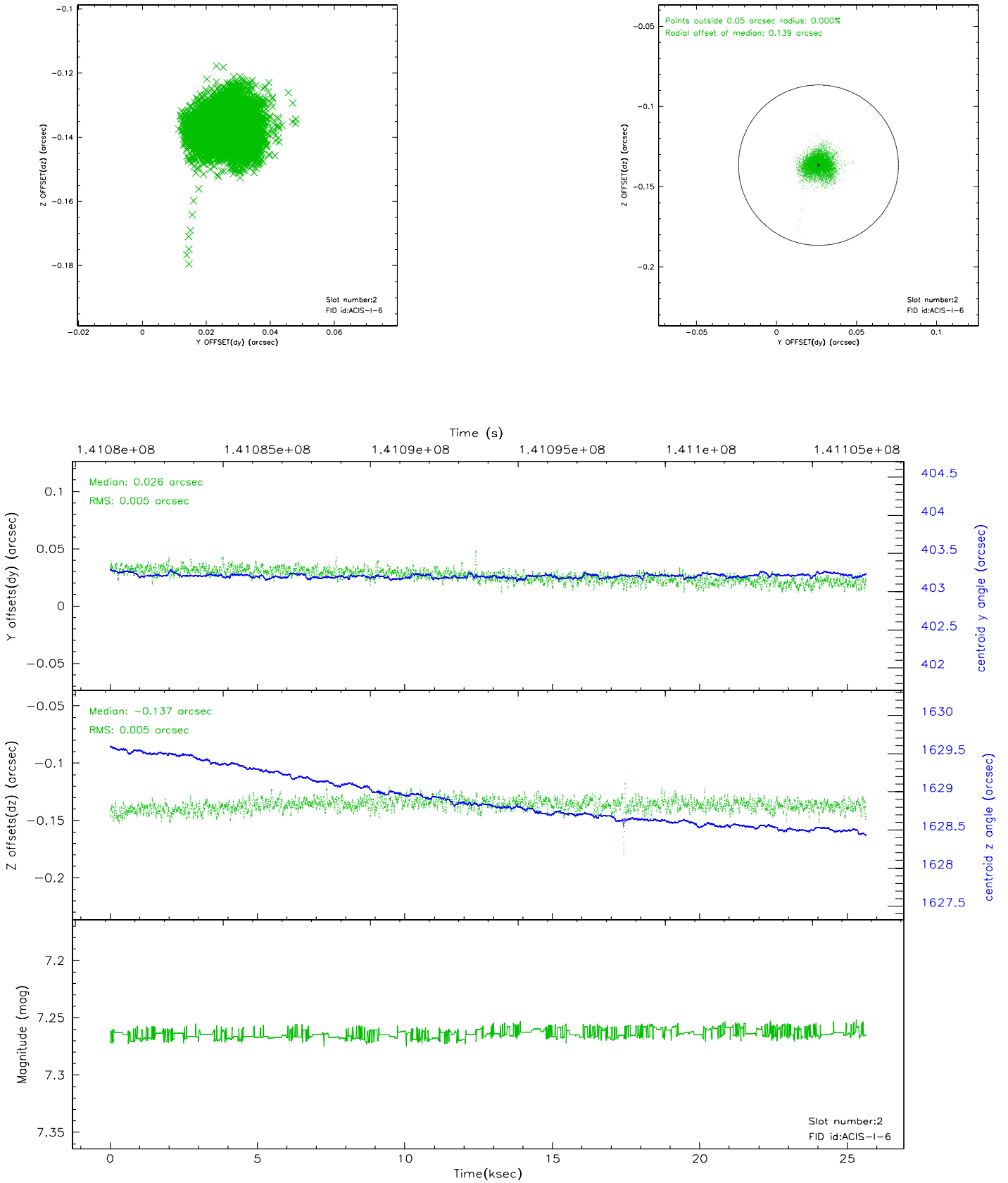
2.5.1 Slot 0



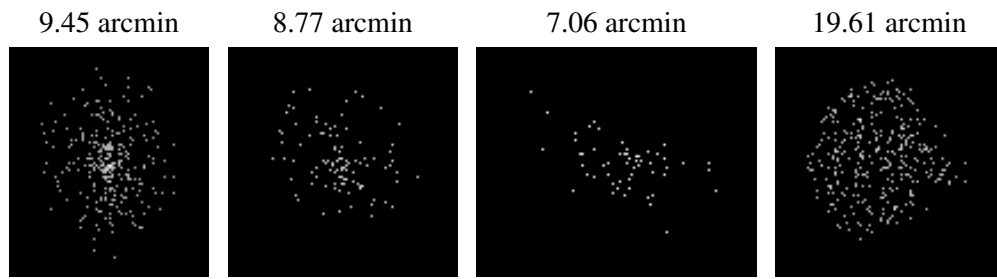
2.5.2 Slot 1



2.5.3 Slot 2



3 Point Sources



A Summary

A.1 Status

V&V Scientist	Jen Lauer
V&V Date (YYYY-MM-DD)	2006.09.21
V&V Edition	1
V&V Disposition and Status	OK
V&V Charge Time	25.116

A.2 Comments