

V&V Reference Report

L2 ASCDS Version : 7.6.10

Observation 3198 - L2 Version 001
Chandra X-Ray Center

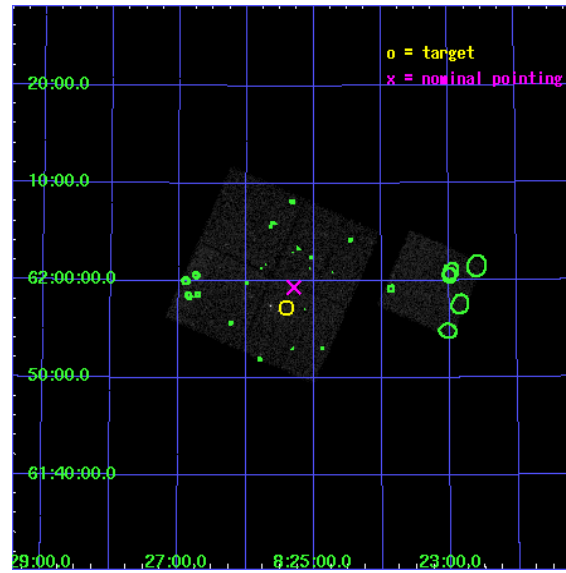
L2 Processing Date : Jan 21 2007

Contents

1	Front	2
2	OBI	3
2.1	OBI	3
2.1.1	Images	3
2.1.2	Bias	3
2.1.3	Parameters	4
2.1.4	Events	4
2.2	Compared Parameters	5
2.3	Aspect	6
2.4	Star Slots	9
2.4.1	Slot 3	9
2.4.2	Slot 4	10
2.4.3	Slot 5	11
2.4.4	Slot 6	12
2.4.5	Slot 7	13
2.5	FID Slots	14
2.5.1	Slot 0	14
2.5.2	Slot 1	15
2.5.3	Slot 2	16
3	Point Sources	17
A	Summary	18
A.1	Status	18
A.2	Comments	18

1 Front

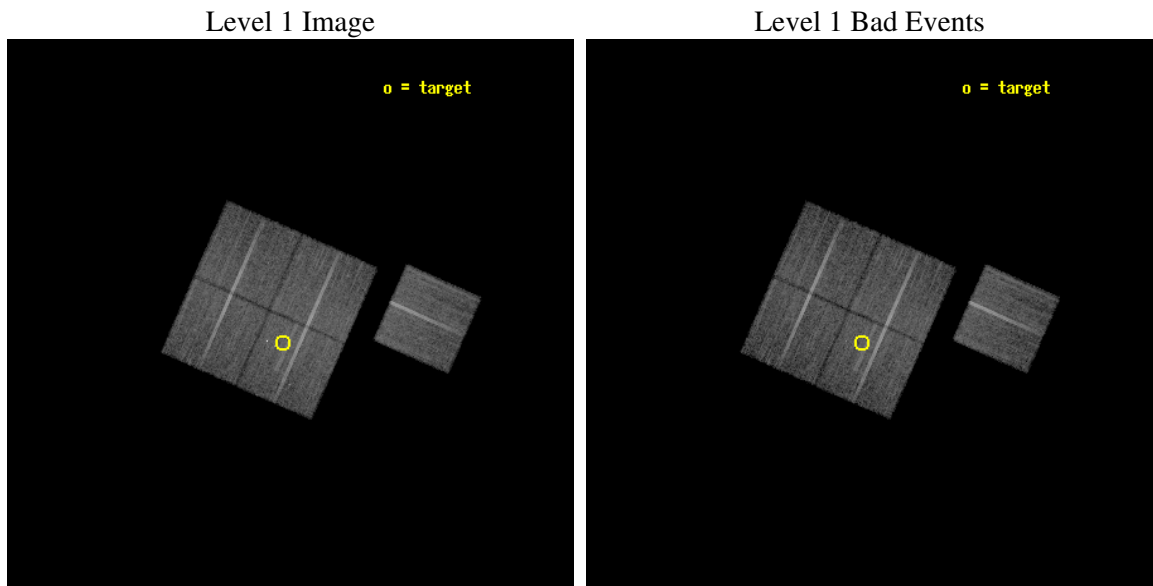
seq_num	800198
obs_id	3198
title	OBSERVATION OF MACS CLUSTERS, $Z>0.5$
observer	DR. LEON VANSPEYBROECK
object	MACS-J0825.5+6157
dtcycle	0
cycle	P
ra_targ	126.352917
dec_targ	61.953889
ra_nom	126.32423947833
dec_nom	61.989125036234
roll_nom	113.9197082595
revision	2
ontime	19195.199963093
livetime	18944.400544274
ontime0	19192.058962926
ontime1	19192.058992848
ontime2	19192.058992848
ontime3	19195.199963093
ontime6	19192.058992848
l2events	44229



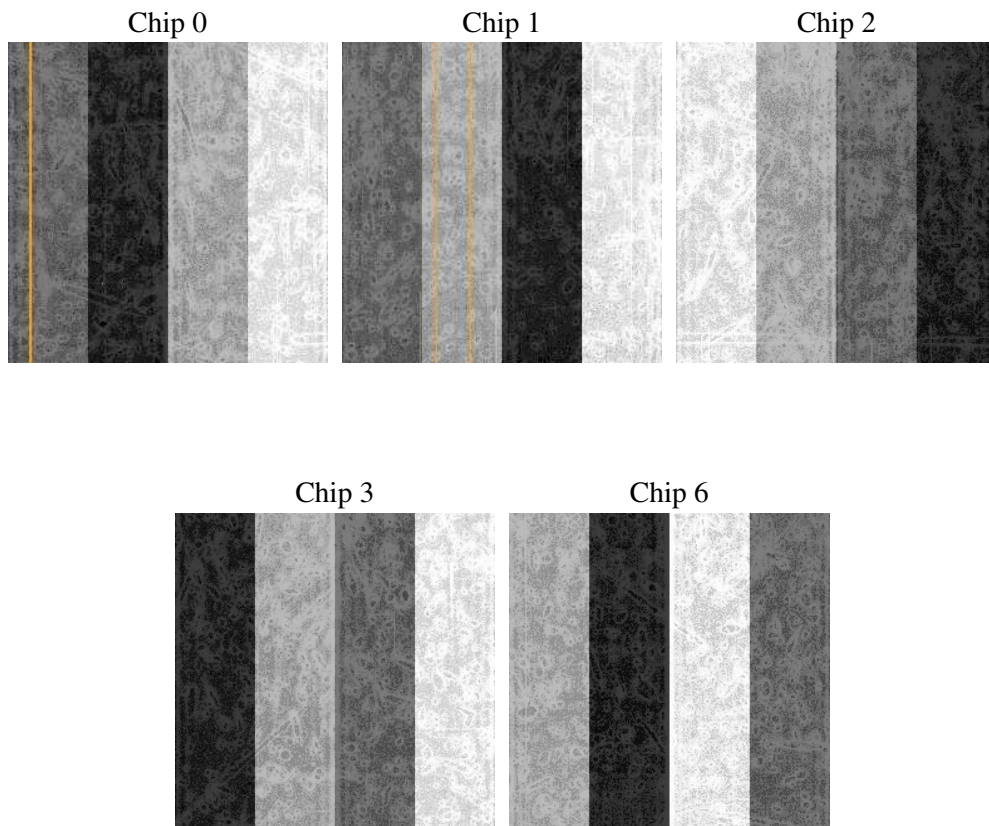
2 OBI

2.1 OBI

2.1.1 Images



2.1.2 Bias



2.1.3 Parameters

obi_num	1
ascdsver	7.6.10
caldsver	3.3.0
date	2007-01-20T14:54:35
revision	2

sched_exp_time	19000.000000
ontime	19195.199963093
ontime0	19192.058962926
ontime1	19192.058992848
ontime2	19192.058992848
ontime3	19195.199963093
ontime6	19192.058992848
l1events	548673

2.1.4 Events

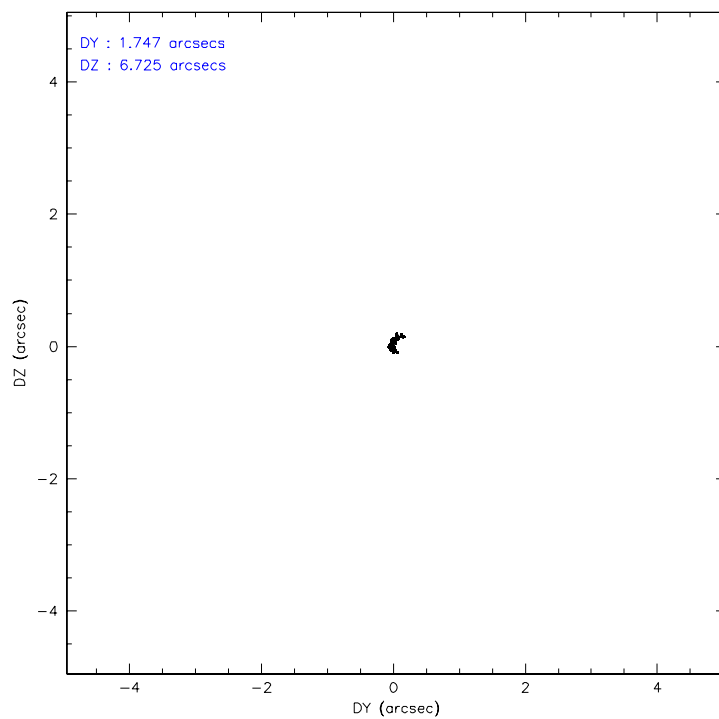
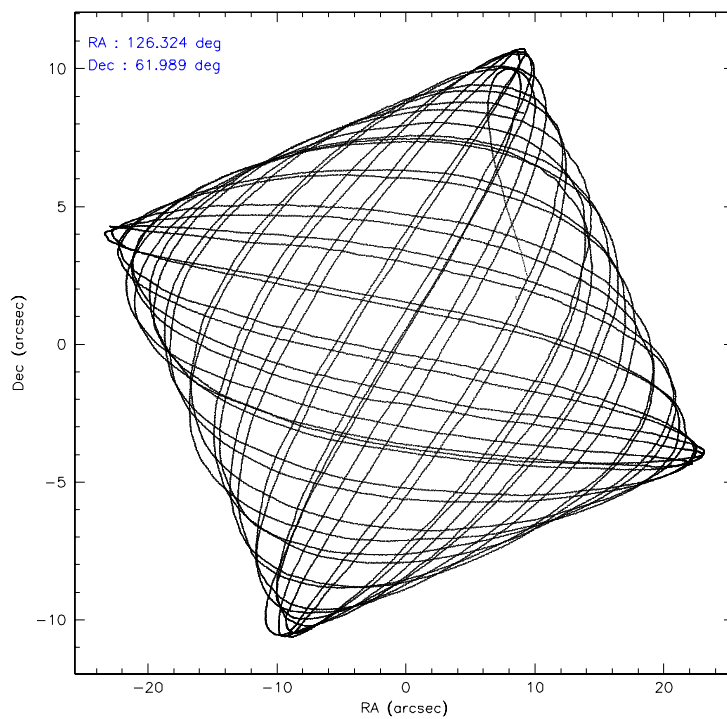
	ccd 0	ccd 1	ccd 2	ccd 3	ccd 6
level 1 events	101297	103040	116573	115239	112524
rejected events	91561	91723	106710	103356	102298
rejected %	90%	89%	91%	89%	90%

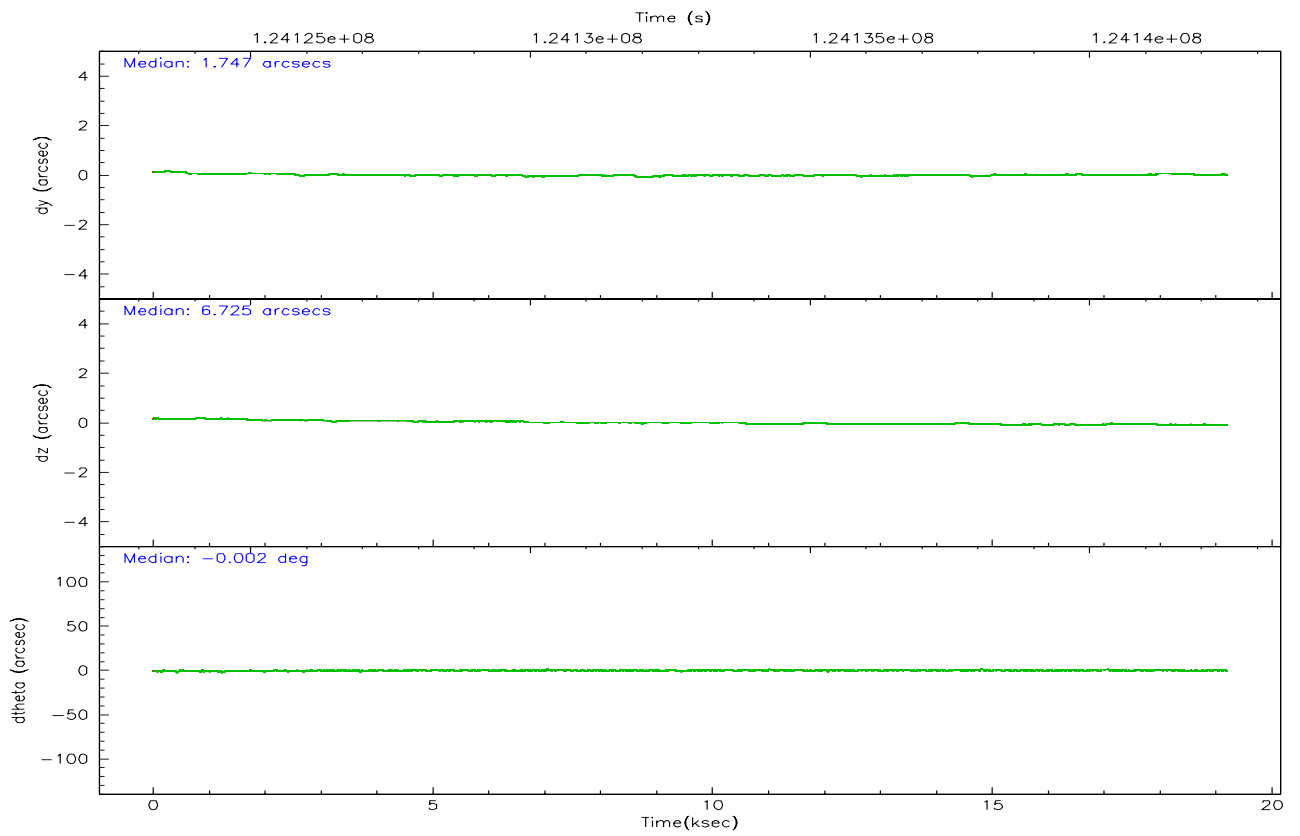
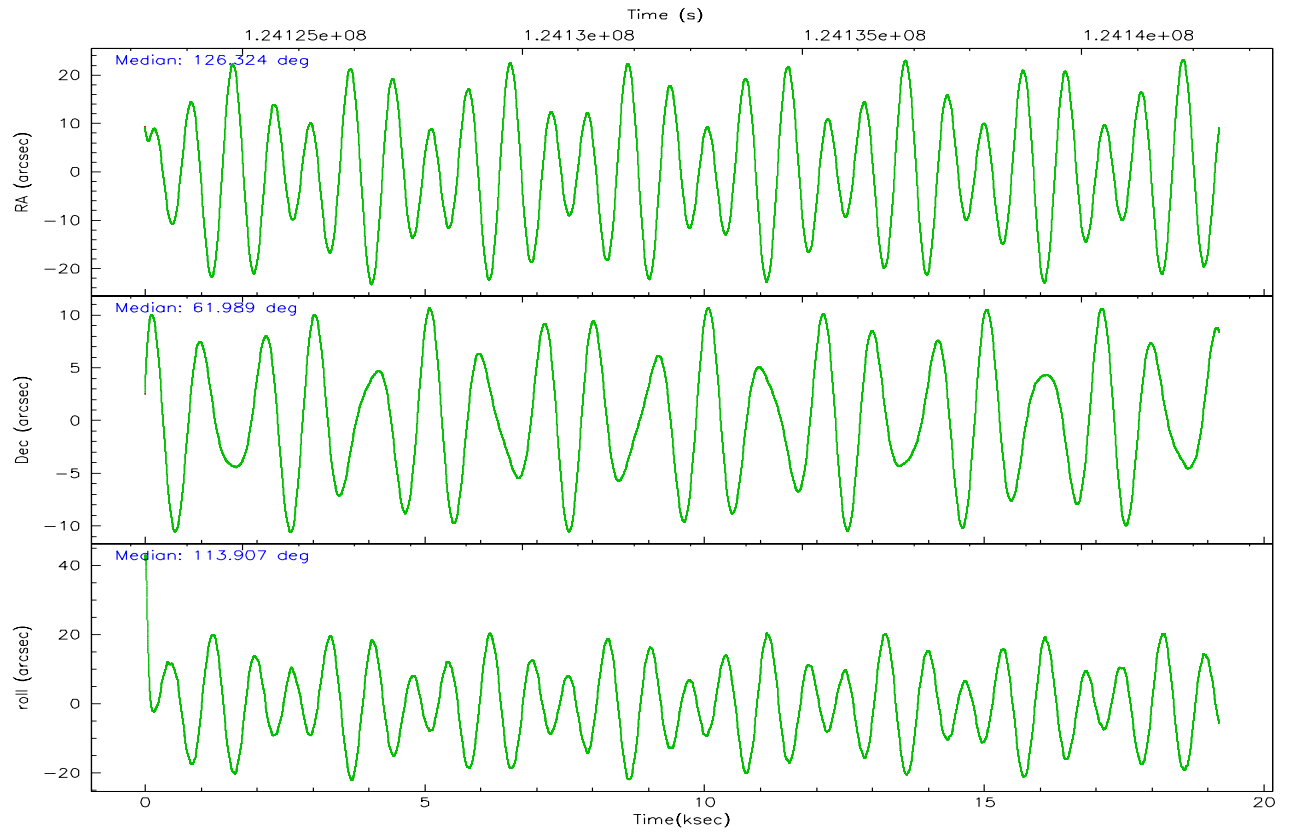
	ccd 0	ccd 1	ccd 2	ccd 3	ccd 6
grade 0 events	3721	4555	3876	5423	3897
	3%	4%	3%	4%	3%
grade 1 events	49	46	40	94	51
	0%	0%	0%	0%	0%
grade 2 events	2406	2550	2445	2517	2348
	2%	2%	2%	2%	2%
grade 3 events	1267	1396	1196	1301	1231
	1%	1%	1%	1%	1%
grade 4 events	1131	1397	1187	1245	1250
	1%	1%	1%	1%	1%
grade 5 events	3494	3891	3338	4063	4042
	3%	3%	2%	3%	3%
grade 6 events	2002	2404	1989	2189	2302
	1%	2%	1%	1%	2%
grade 7 events	87227	86801	102502	98407	97403
	86%	84%	87%	85%	86%

2.2 Compared Parameters

Parameter	Planned	Actual	Parameter	Planned	Actual
Instrument	ACIS	ACIS	Obspar format version number	6	6
Detector	ACIS-01236	ACIS-01236	Obspar file type	PREDICTED	ACTUAL
Grating	NONE	NONE	Obspar update status	NONE	UPDATED
Data mode	VFAINT	VFAINT	Number of optional ACIS chips dropped	0	0
Observation mode	POINTING	POINTING	On-chip summing requested	N	N
Pointing RA	126.371478	126.324239478327	Subarray requested	NONE	NONE
Pointing Dec	61.973004	61.98912503623363	Alternating exposures requested	N	N
Pointing Roll	113.669292	113.9197082594996	Primary exposure time	0.000000	3.1
SIM focus pos (mm)	-0.782348	-0.7809083437167272			
SIM defocus (mm)	0	0.001439871863259334			
SIM translation stage pos (mm)	-227.742463	-227.734108438797			
SIM translation stage offset (mm)	-5.85	-5.858344564132665			
Observation start time	124123455.184000	124121670.12733			
Observation start date	2001-12-07T14:43:11	2001-12-07T14:14:30			
Observation end time	124142455.184000	124143348.36569			
Observation end date	2001-12-07T19:59:51	2001-12-07T20:15:48			
Read mode	TIMED	TIMED			

2.3 Aspect



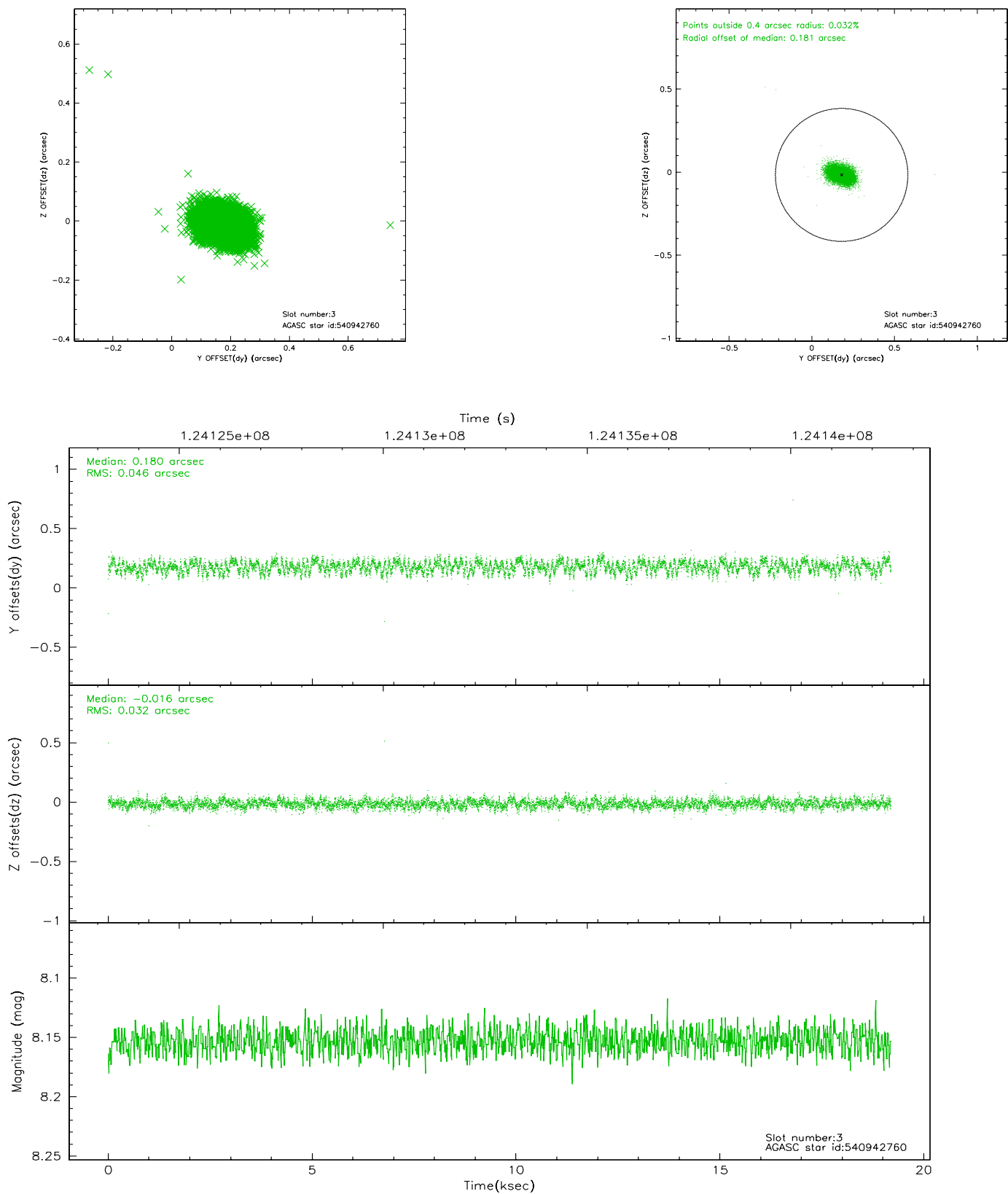


Slot Statistics

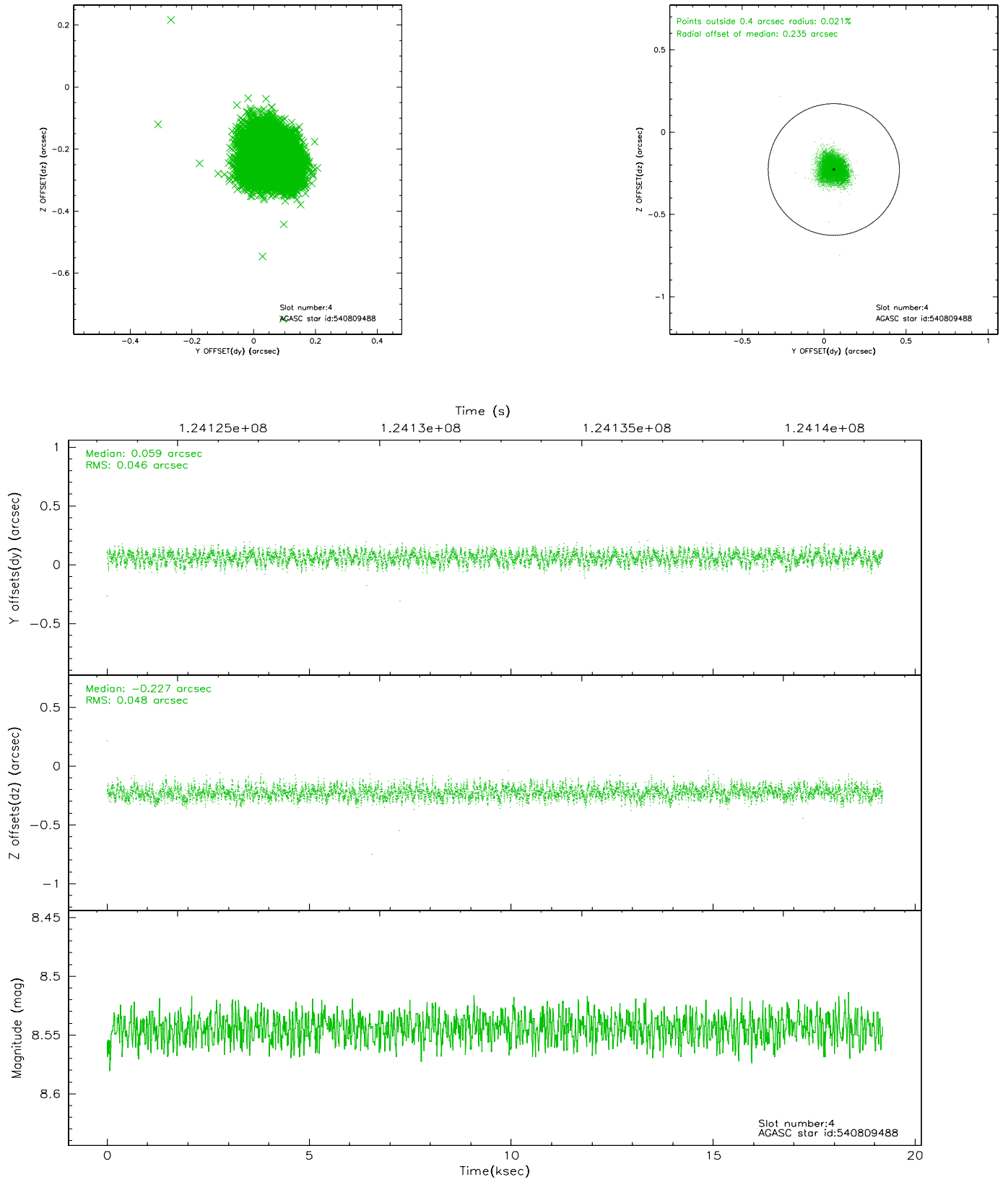
slot	status	id	mag	n_pts	med_dy	med_dz	dr1	dr2	ra	dec	mean_y	mean_z
0	FID	ACIS-I-3	7.43	4682	-0.010	0.223	0.006	0.011	0.000000	0.000000	55.36	-1083.37
1	FID	ACIS-I-5	7.24	4683	-0.073	0.006	0.007	0.012	0.000000	0.000000	-1810.29	946.99
2	FID	ACIS-I-6	7.25	4684	-0.009	-0.160	0.006	0.011	0.000000	0.000000	403.29	1591.58
3	GUIDE	540942760	8.15	9365	0.180	-0.016	0.058	0.093	125.817553	61.460445	-1302.87	1610.89
4	GUIDE	540809488	8.54	9366	0.059	-0.227	0.072	0.111	125.194165	61.682156	-134.66	2253.71
5	GUIDE	540934440	9.08	9359	0.117	0.157	0.073	0.120	126.658856	62.199965	556.99	-770.24
6	GUIDE	540934536	9.53	9358	-0.078	0.245	0.139	0.228	127.439873	62.272556	284.36	-2078.09
7	GUIDE	540806944	8.44	9365	-0.278	-0.166	0.071	0.112	124.808645	62.197633	1823.48	2065.37

2.4 Star Slots

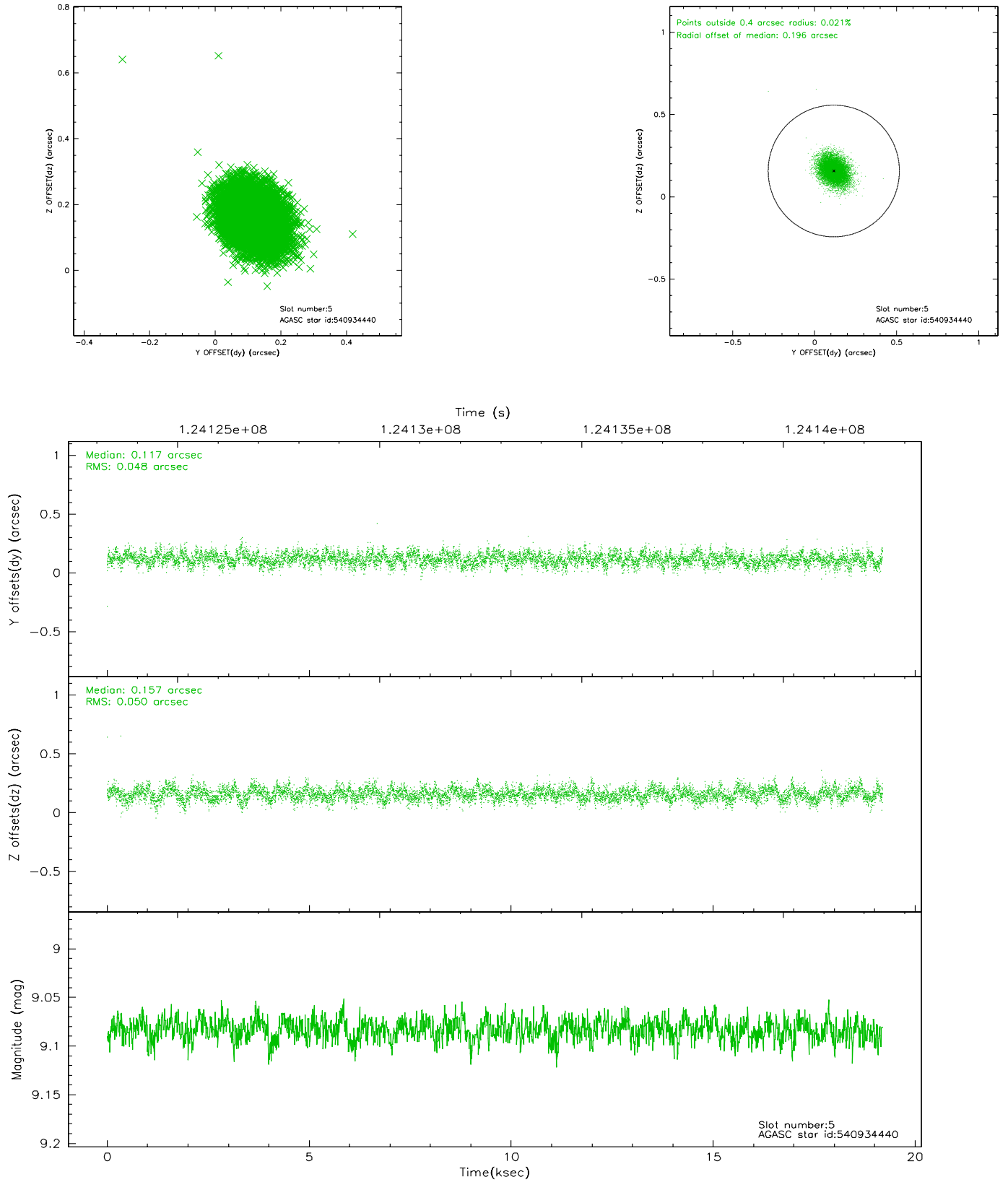
2.4.1 Slot 3



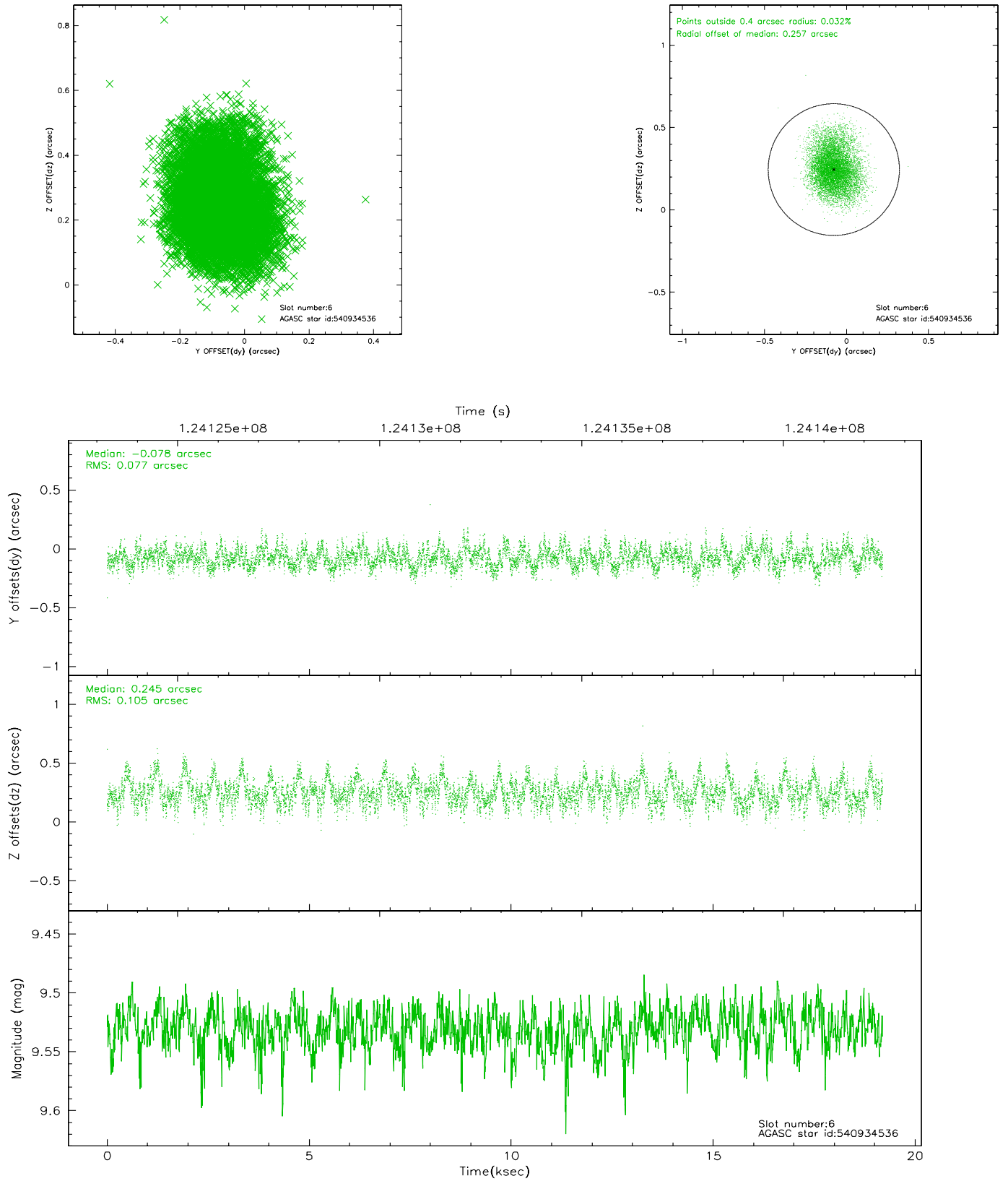
2.4.2 Slot 4



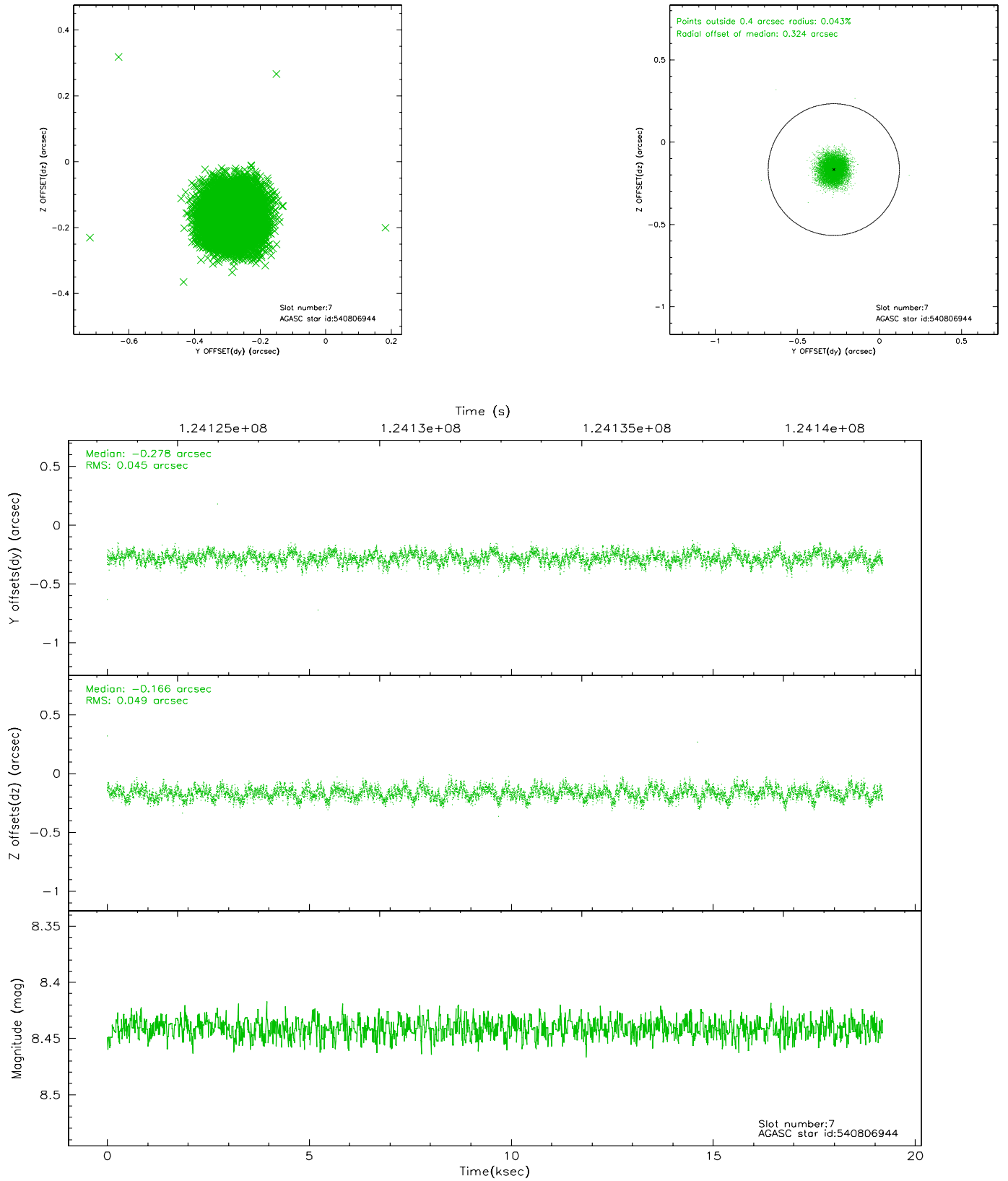
2.4.3 Slot 5



2.4.4 Slot 6

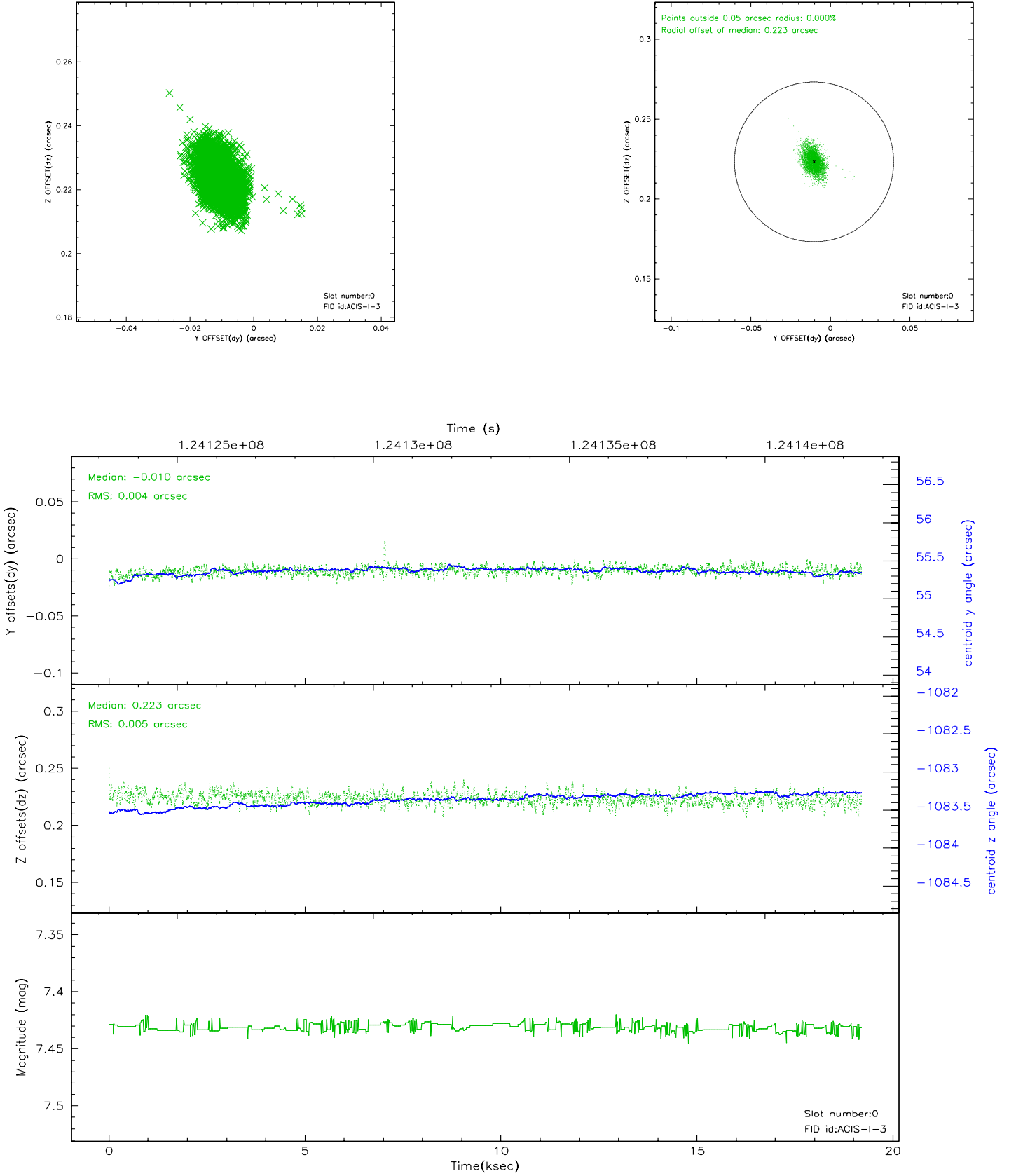


2.4.5 Slot 7

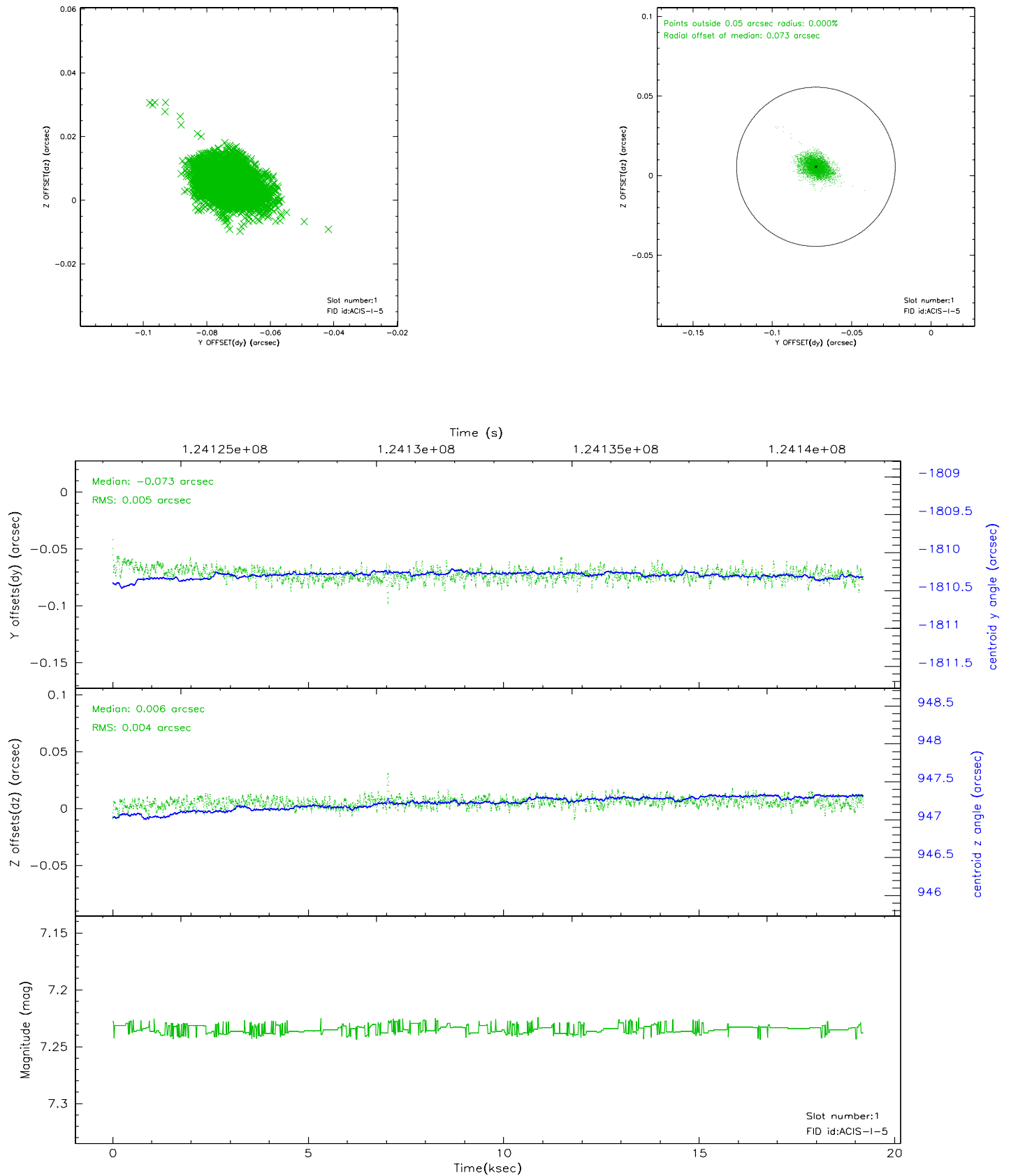


2.5 FID Slots

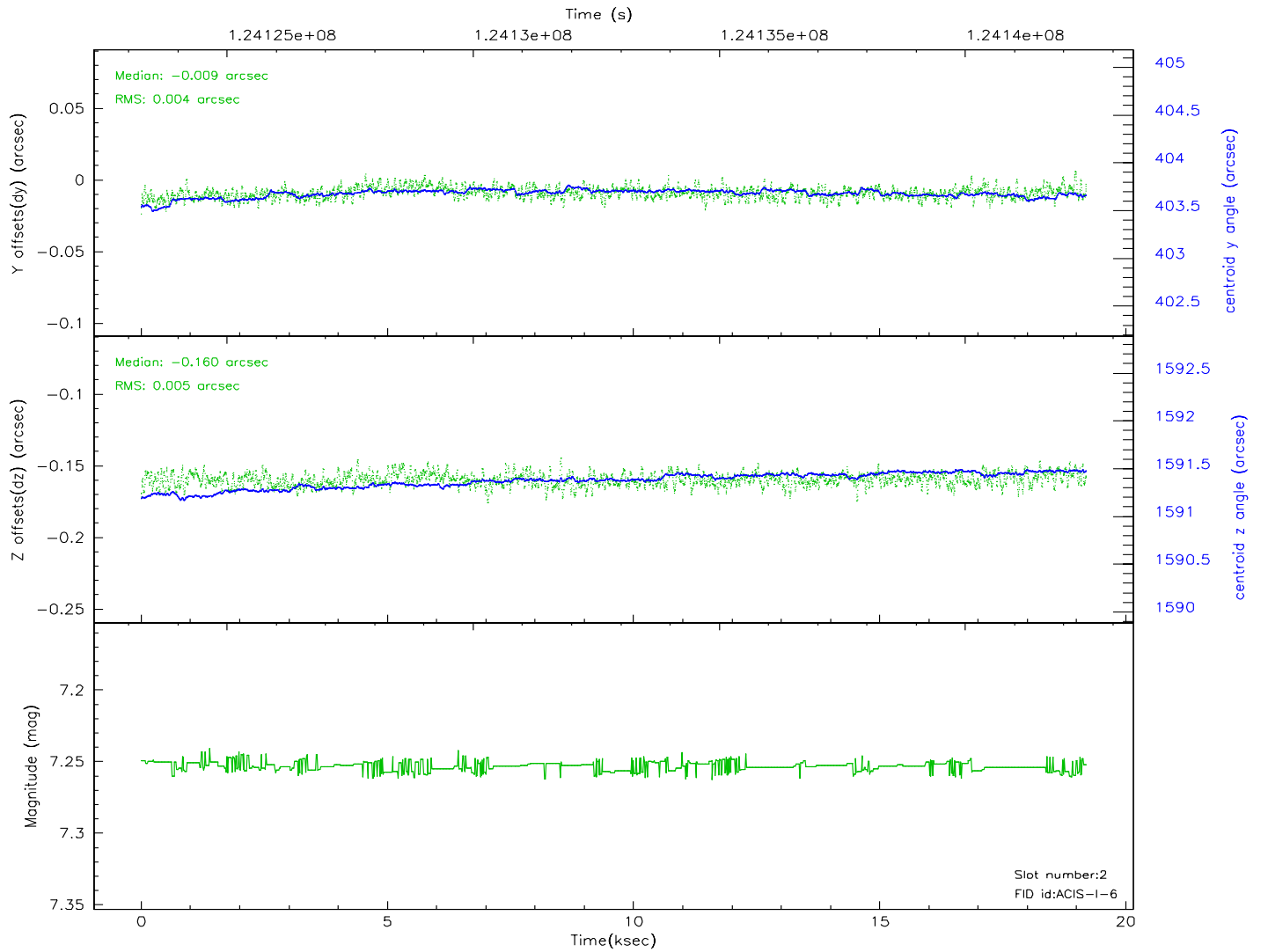
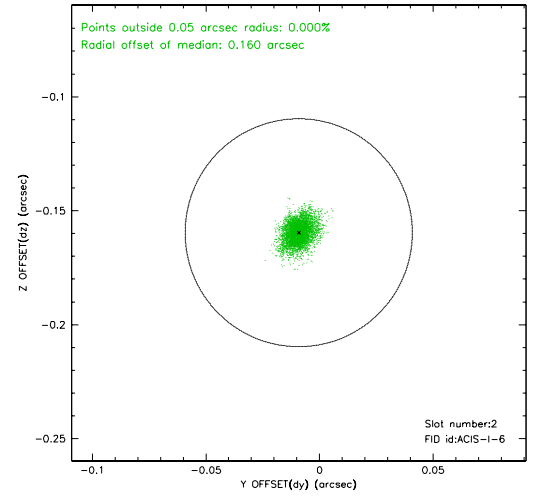
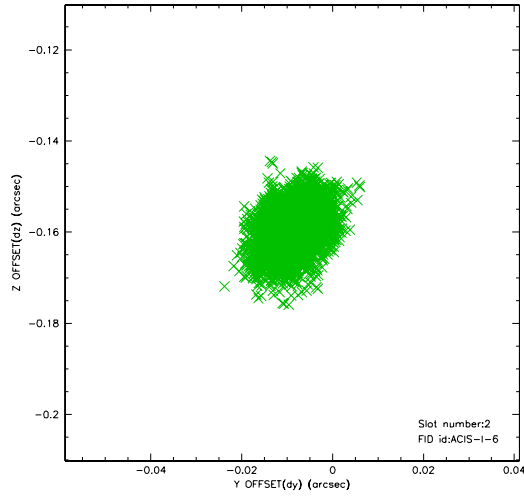
2.5.1 Slot 0



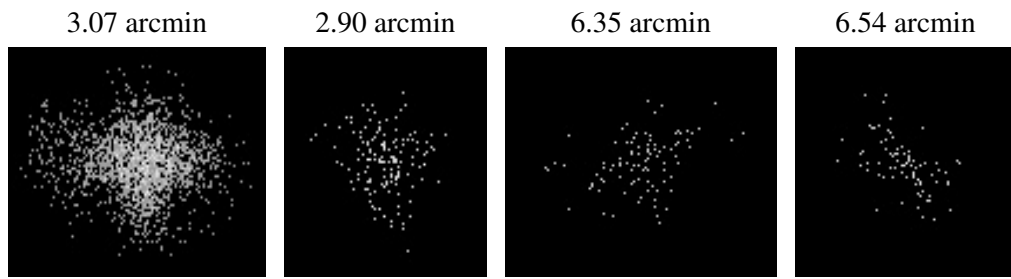
2.5.2 Slot 1



2.5.3 Slot 2



3 Point Sources



A Summary

A.1 Status

V&V Scientist	Beth Sundheim
V&V Date (YYYY-MM-DD)	2007.01.22
V&V Edition	1
V&V Disposition and Status	OK
V&V Charge Time	19.195

A.2 Comments