

V&V Reference Report

L2 ASCDS Version : 7.6.9

Observation 3193 - L2 Version 001
Chandra X-Ray Center

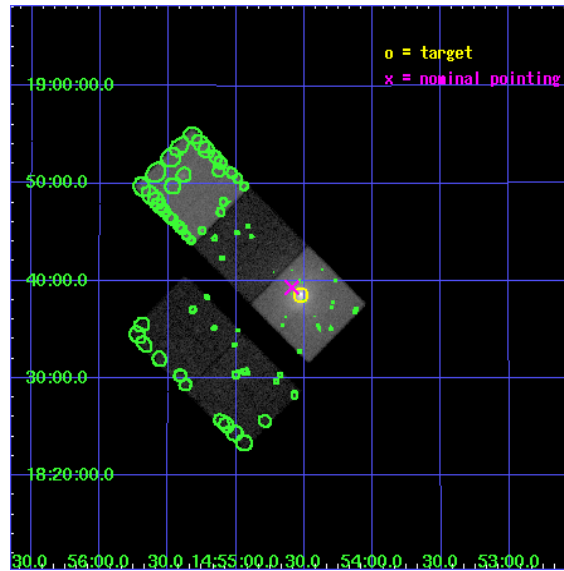
L2 Processing Date : Oct 15 2006

Contents

1	Front	2
2	OBI	3
2.1	OBI	3
2.1.1	Images	3
2.1.2	Bias	3
2.1.3	Parameters	4
2.1.4	Events	4
2.2	Compared Parameters	5
2.3	Aspect	6
2.4	Star Slots	9
2.4.1	Slot 3	9
2.4.2	Slot 4	10
2.4.3	Slot 5	11
2.4.4	Slot 6	12
2.4.5	Slot 7	13
2.5	FID Slots	14
2.5.1	Slot 0	14
2.5.2	Slot 1	15
2.5.3	Slot 2	16
3	Point Sources	17
A	Summary	18
A.1	Status	18
A.2	Comments	18

1 Front

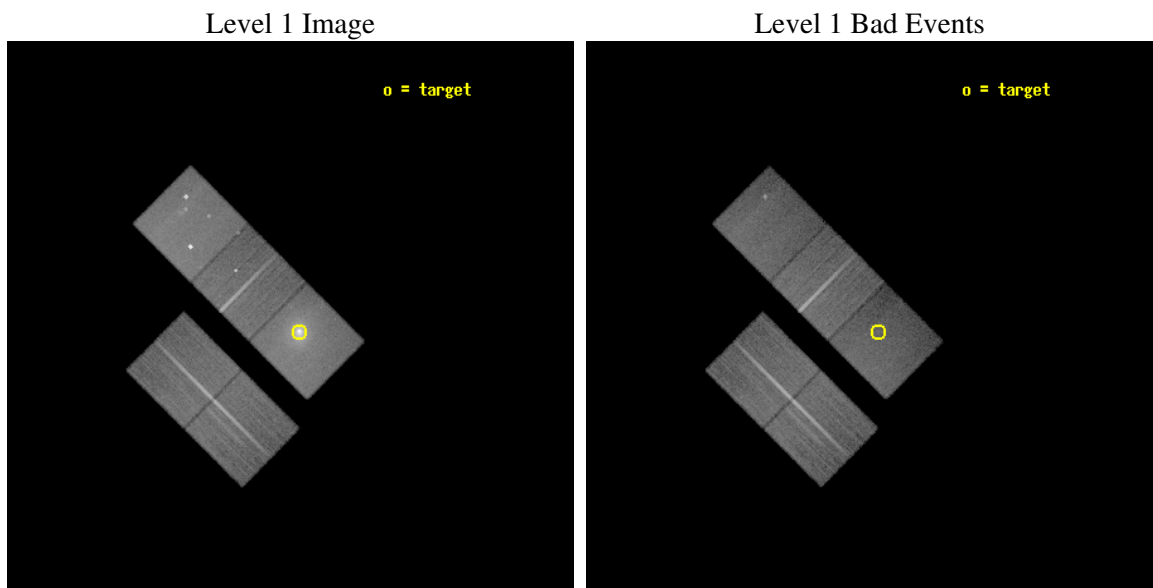
seq_num	800193
obs_id	3193
title	THE FATE OF MATTER IN THE MODERATE COOLING FLOW CLUSTER ABELL 1991
observer	Prof. Brian McNamara
object	ABELL 1991
dtcycle	0
cycle	P
ra_targ	223.63125
dec_targ	18.642222
ra_nom	223.64797741243
dec_nom	18.655586707761
roll_nom	44.896729525836
revision	2
ontime	38811.999925375
livetime	38304.892573371
ontime2	38802.576984882
ontime3	38805.718044698
ontime5	38811.999925375
ontime6	38811.999925375
ontime7	38811.999925375
l2events	355527



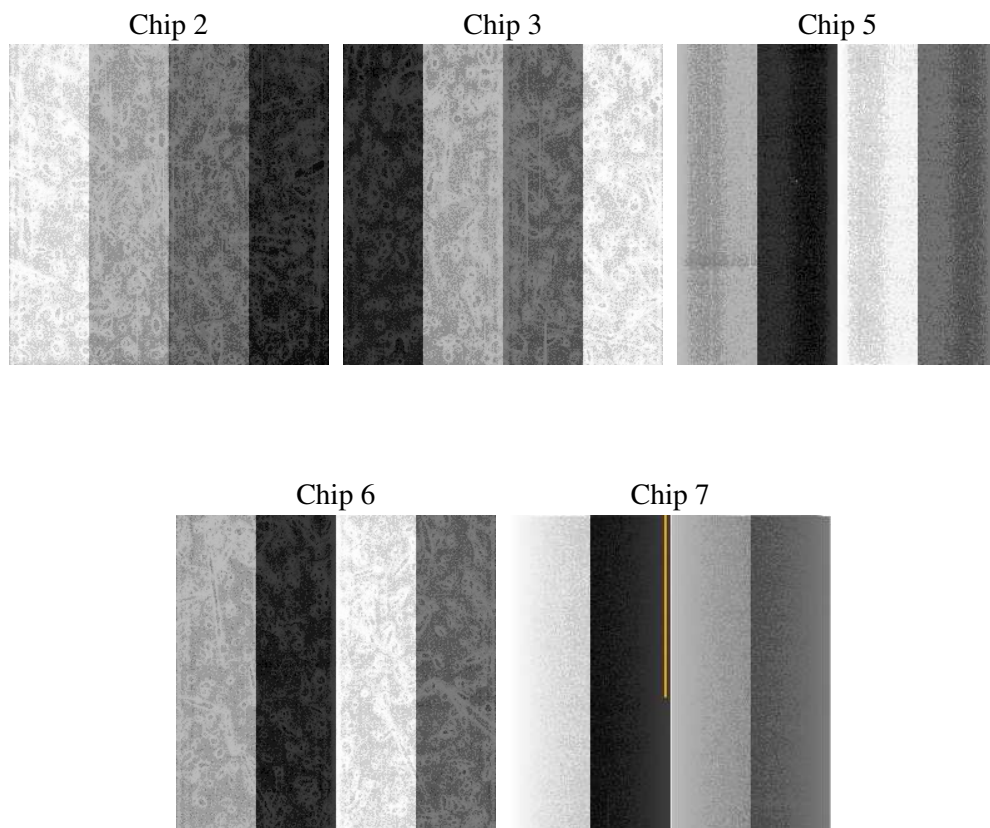
2 OBI

2.1 OBI

2.1.1 Images



2.1.2 Bias



2.1.3 Parameters

obi_num	0
ascdsver	7.6.9
caldbver	3.2.3
date	2006-10-15T06:03:06
revision	2

sched_exp_time	38706.000000
ontime	38816.484339625
ontime2	38807.061399132
ontime3	38810.20243904
ontime5	38816.484339625
ontime6	38816.484319717
ontime7	38816.484339625
l1events	1190605

2.1.4 Events

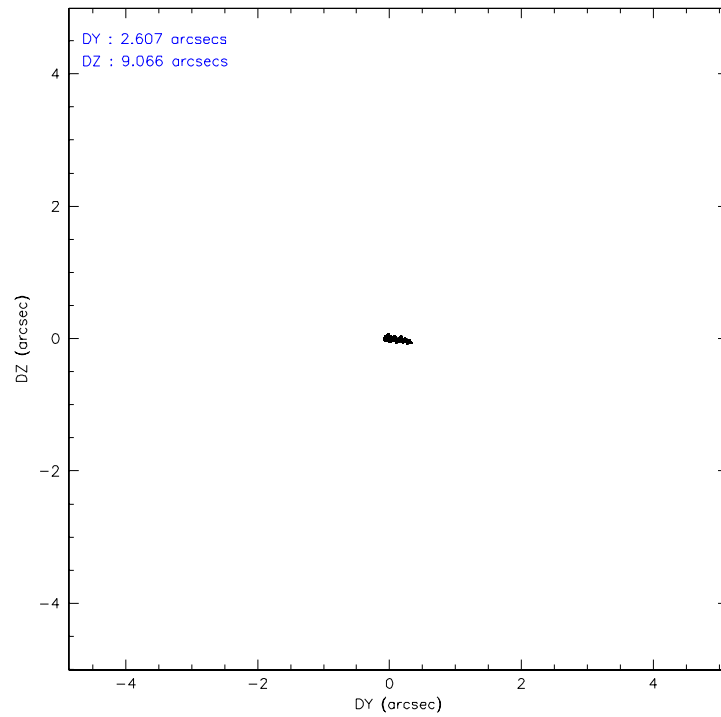
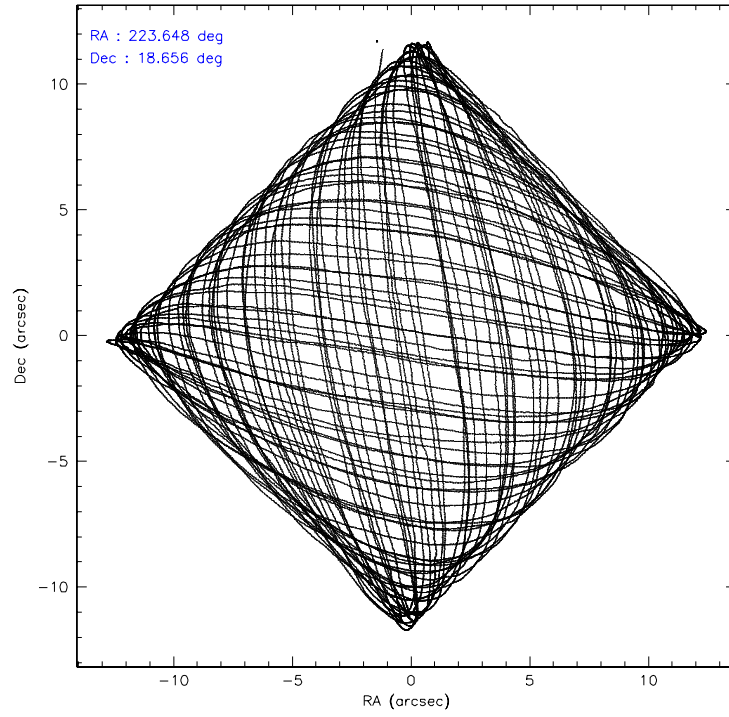
	ccd 2	ccd 3	ccd 5	ccd 6	ccd 7
level 1 events	203277	198711	275303	206311	307003
rejected events	183336	179575	136618	178658	125225
rejected %	90%	90%	49%	86%	40%

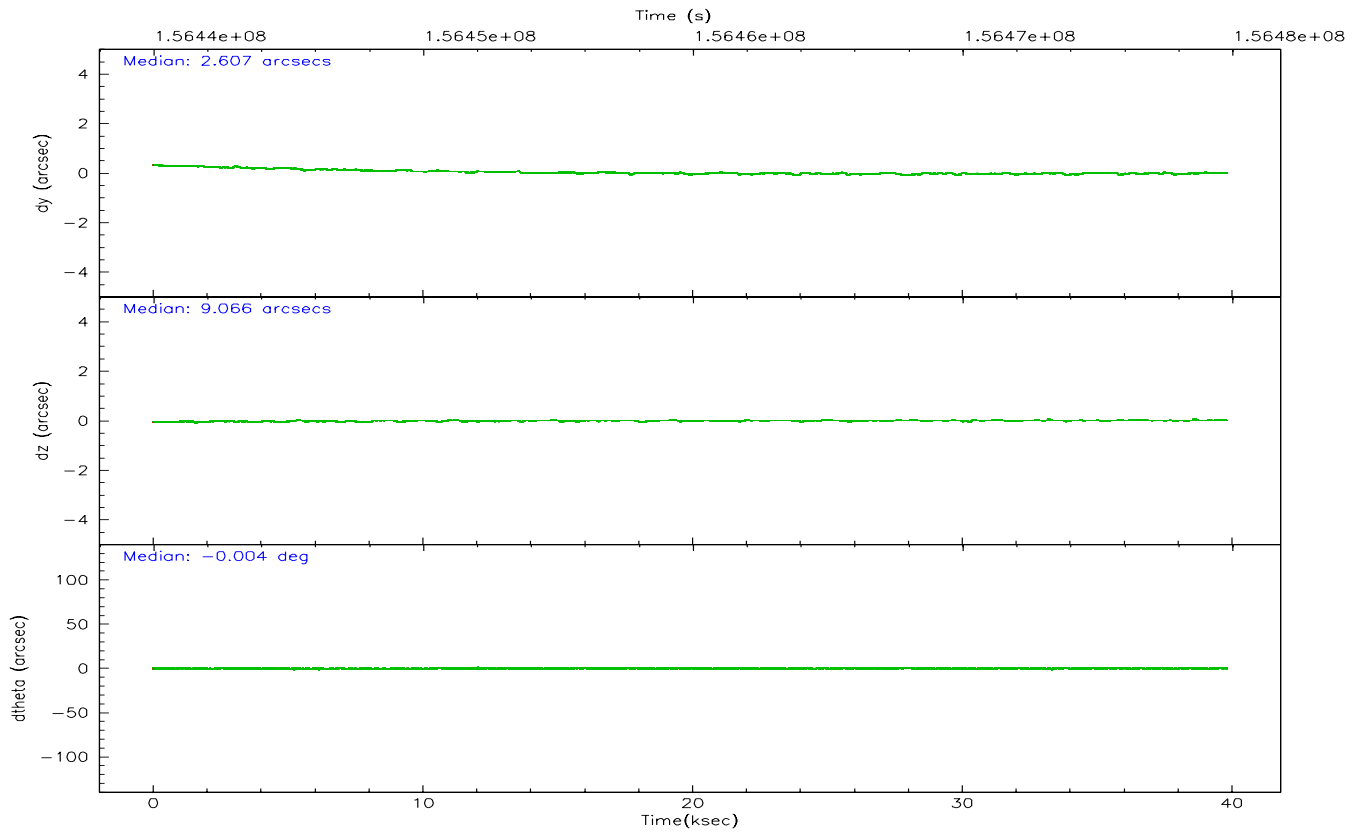
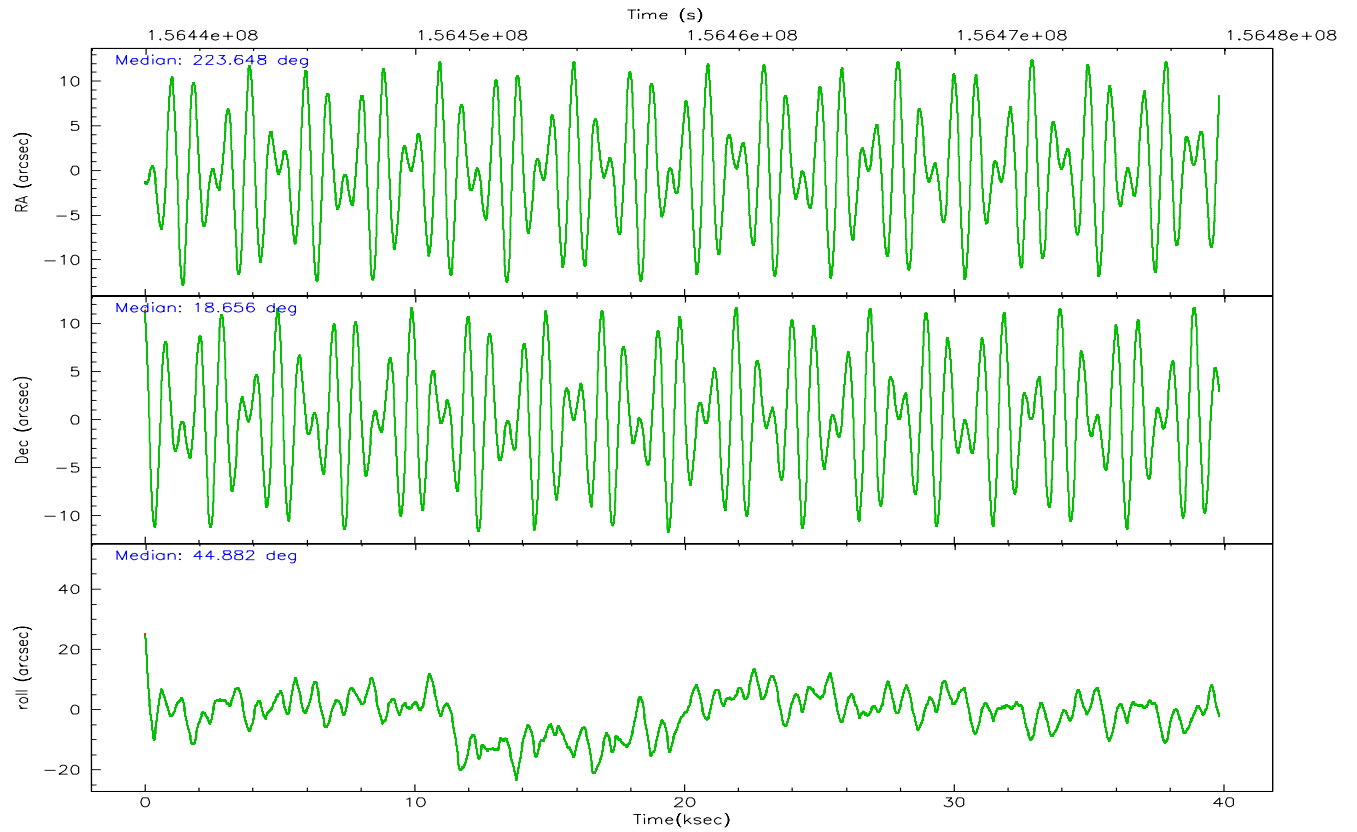
	ccd 2	ccd 3	ccd 5	ccd 6	ccd 7
grade 0 events	7595	7255	22371	13180	35126
	3%	3%	8%	6%	11%
grade 1 events	99	100	928	114	136
	0%	0%	0%	0%	0%
grade 2 events	4433	3895	39546	5072	47149
	2%	1%	14%	2%	15%
grade 3 events	2272	2210	3652	2554	15711
	1%	1%	1%	1%	5%
grade 4 events	2222	2209	3589	2396	15292
	1%	1%	1%	1%	4%
grade 5 events	6425	7419	13904	7865	17179
	3%	3%	5%	3%	5%
grade 6 events	3419	3568	69536	4454	68512
	1%	1%	25%	2%	22%
grade 7 events	176812	172055	121777	170676	107898
	86%	86%	44%	82%	35%

2.2 Compared Parameters

Parameter	Planned	Actual	Parameter	Planned	Actual
Instrument	ACIS	ACIS	Obspar format version number	6	6
Detector	ACIS-23567	ACIS-23567	Obspar file type	PREDICTED	ACTUAL
Grating	NONE	NONE	Obspar update status	NONE	UPDATED
Data mode	VFAINT	VFAINT	Number of optional ACIS chips dropped	0	0
Observation mode	POINTING	POINTING	On-chip summing requested	N	N
Pointing RA	223.640893	223.6479774124322	Subarray requested	NONE	NONE
Pointing Dec	18.629224	18.65558670776086	Alternating exposures requested	N	N
Pointing Roll	44.742363	44.89672952583567	Primary exposure time	0.000000	3.1
SIM focus pos (mm)	-0.684267	-0.6828225247311905			
SIM defocus (mm)	0	0.001444936568705701			
SIM translation stage pos (mm)	-190.132523	-190.1425803651734			
SIM translation stage offset (mm)	0	0.01005778216563158			
Observation start time	156441087.184000	156439659.04937			
Observation start date	2002-12-16T15:50:23	2002-12-16T15:27:39			
Observation end time	156479793.184000	156480773.33858			
Observation end date	2002-12-17T02:35:29	2002-12-17T02:52:53			
Read mode	TIMED	TIMED			

2.3 Aspect



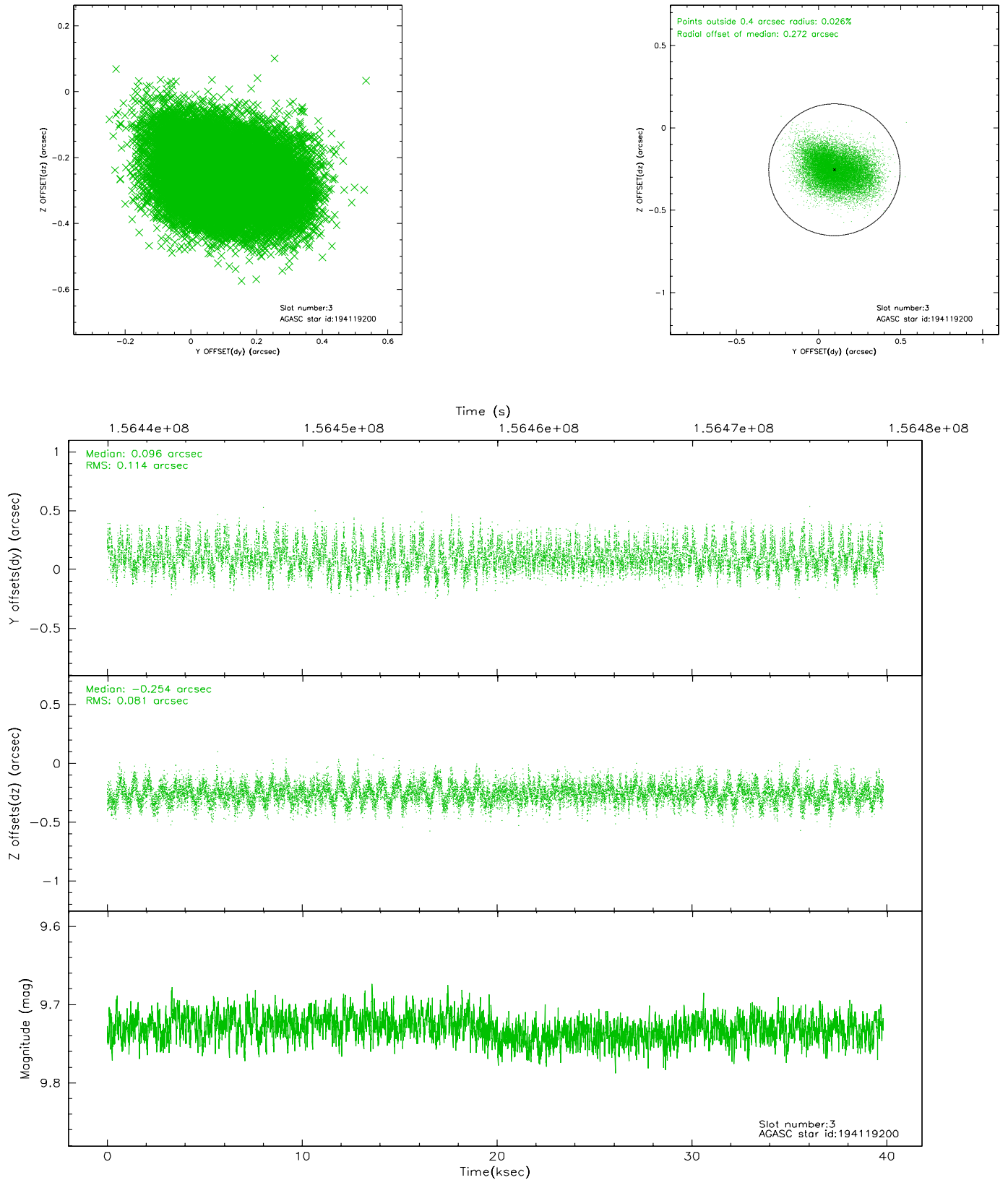


Slot Statistics

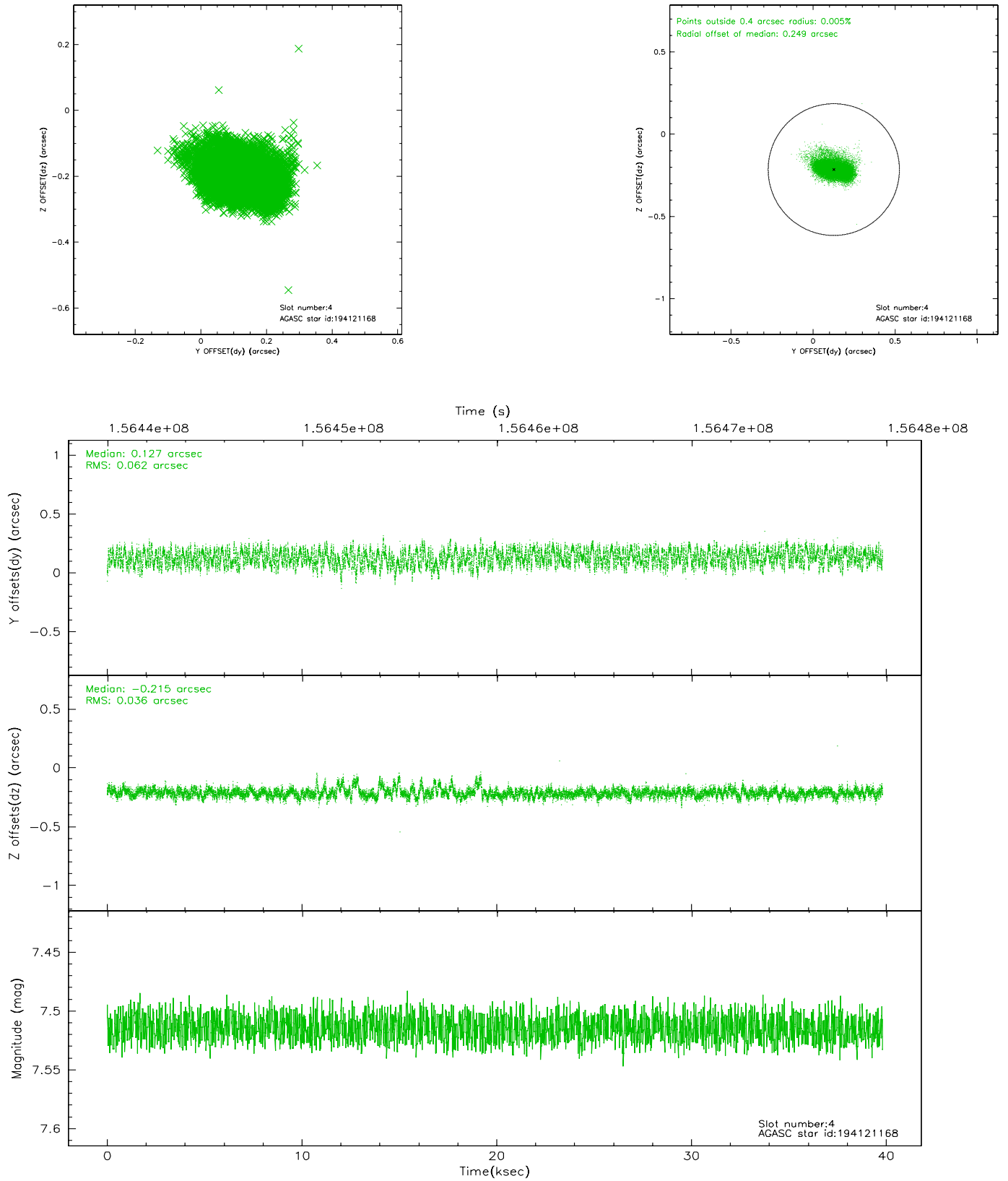
slot	status	id	mag	n_pts	med_dy	med_dz	dr1	dr2	ra	dec	mean_y	mean_z
0	FID	ACIS-S-2	7.10	9715	0.009	0.032	0.006	0.011	0.000000	0.000000	-755.26	-1730.21
1	FID	ACIS-S-4	7.20	9715	-0.022	0.005	0.006	0.011	0.000000	0.000000	2157.97	178.25
2	FID	ACIS-S-6	7.35	9715	-0.015	-0.030	0.007	0.012	0.000000	0.000000	406.70	815.62
3	GUIDE	194119200	9.73	19417	0.096	-0.254	0.149	0.245	222.762059	18.720720	-1891.99	2348.03
4	GUIDE	194121168	7.51	19429	0.127	-0.215	0.076	0.124	222.816765	18.649841	-1940.81	2035.65
5	GUIDE	194121512	7.68	19426	0.095	0.172	0.060	0.109	223.345959	18.235405	-1713.75	-296.59
6	GUIDE	195037696	9.62	19412	-0.180	0.205	0.104	0.174	224.205126	18.549742	1168.50	-1555.85
7	GUIDE	195039056	9.79	18888	-0.147	0.106	0.136	0.384	224.328218	18.648184	1716.51	-1598.12

2.4 Star Slots

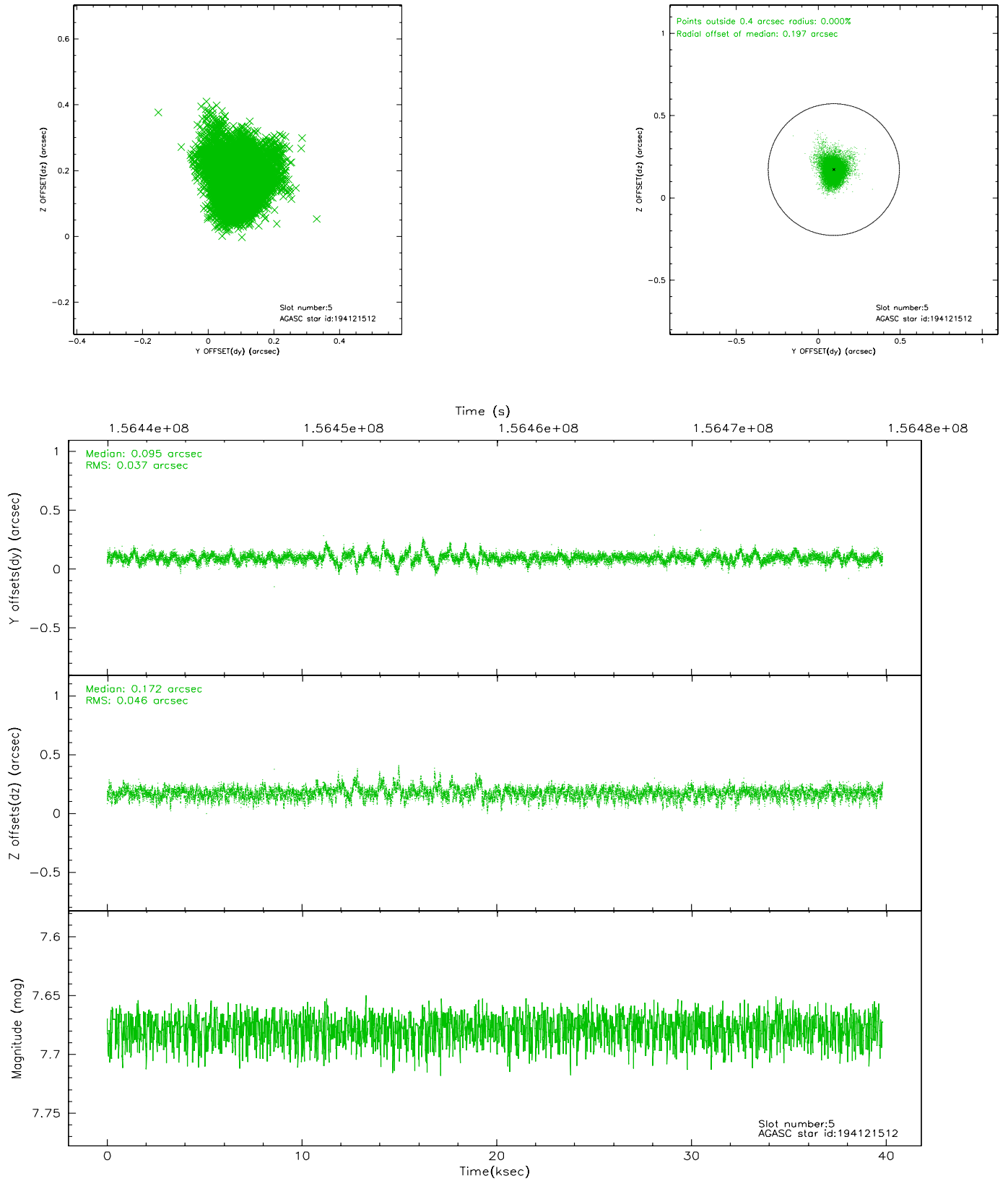
2.4.1 Slot 3



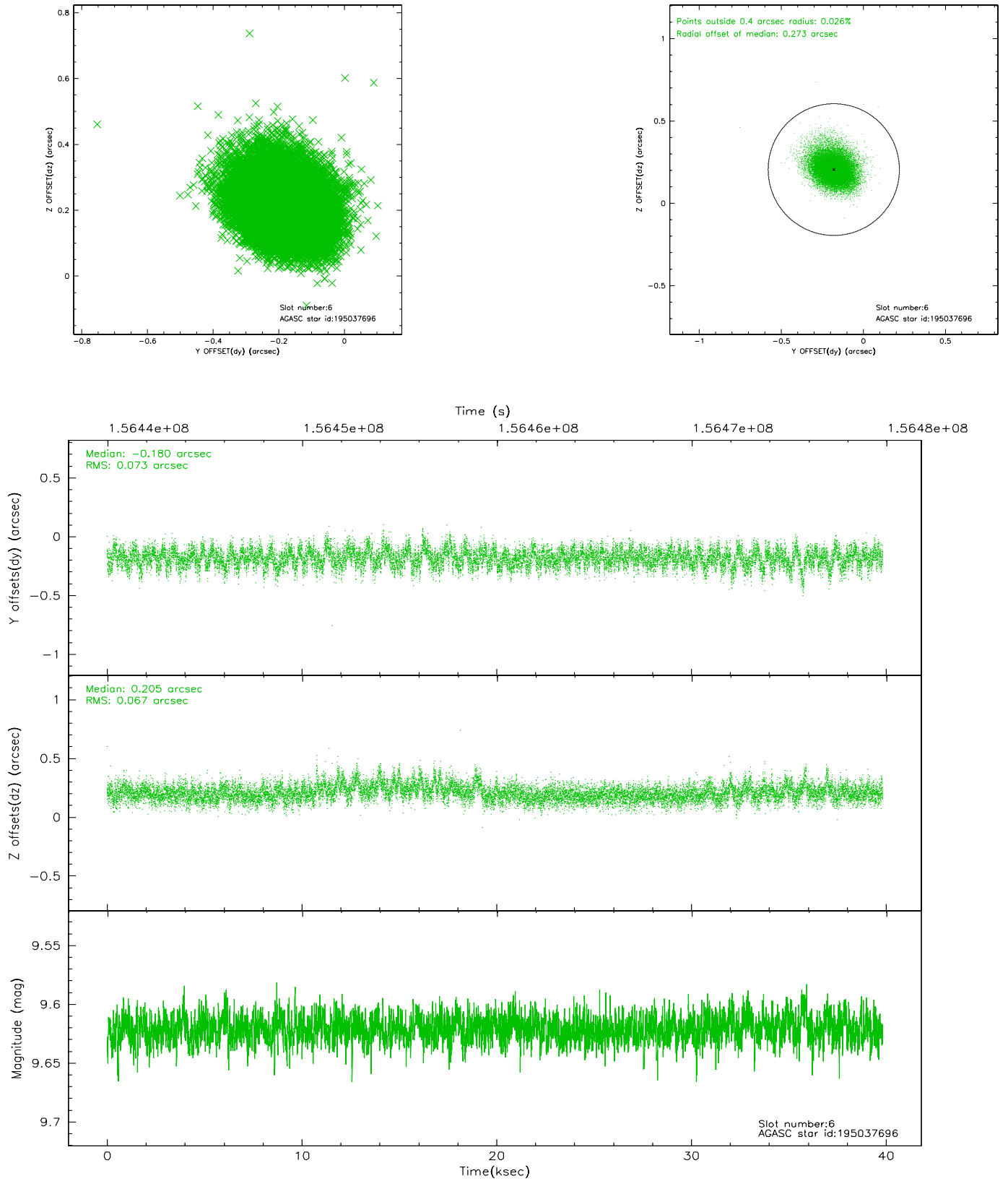
2.4.2 Slot 4



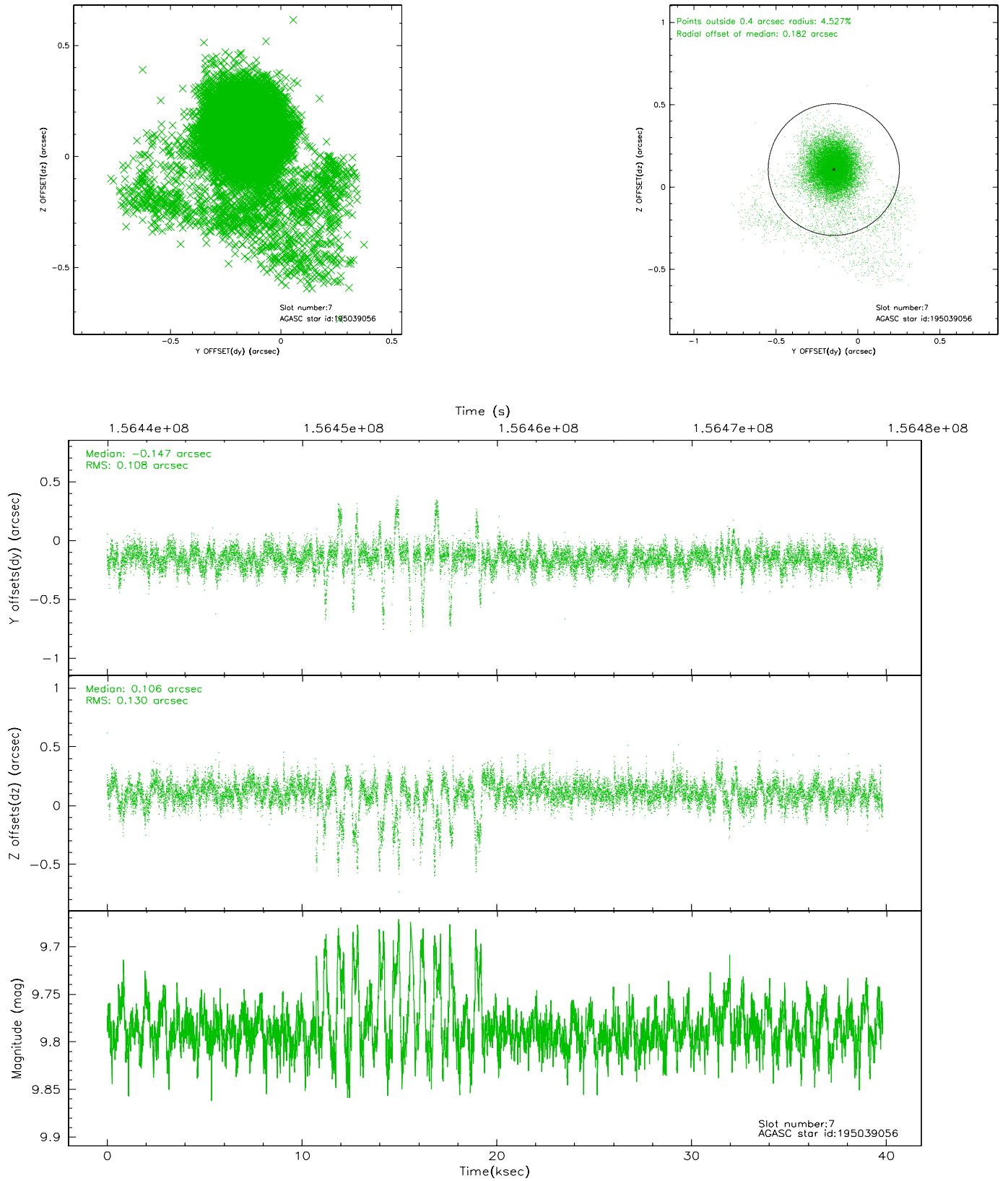
2.4.3 Slot 5



2.4.4 Slot 6

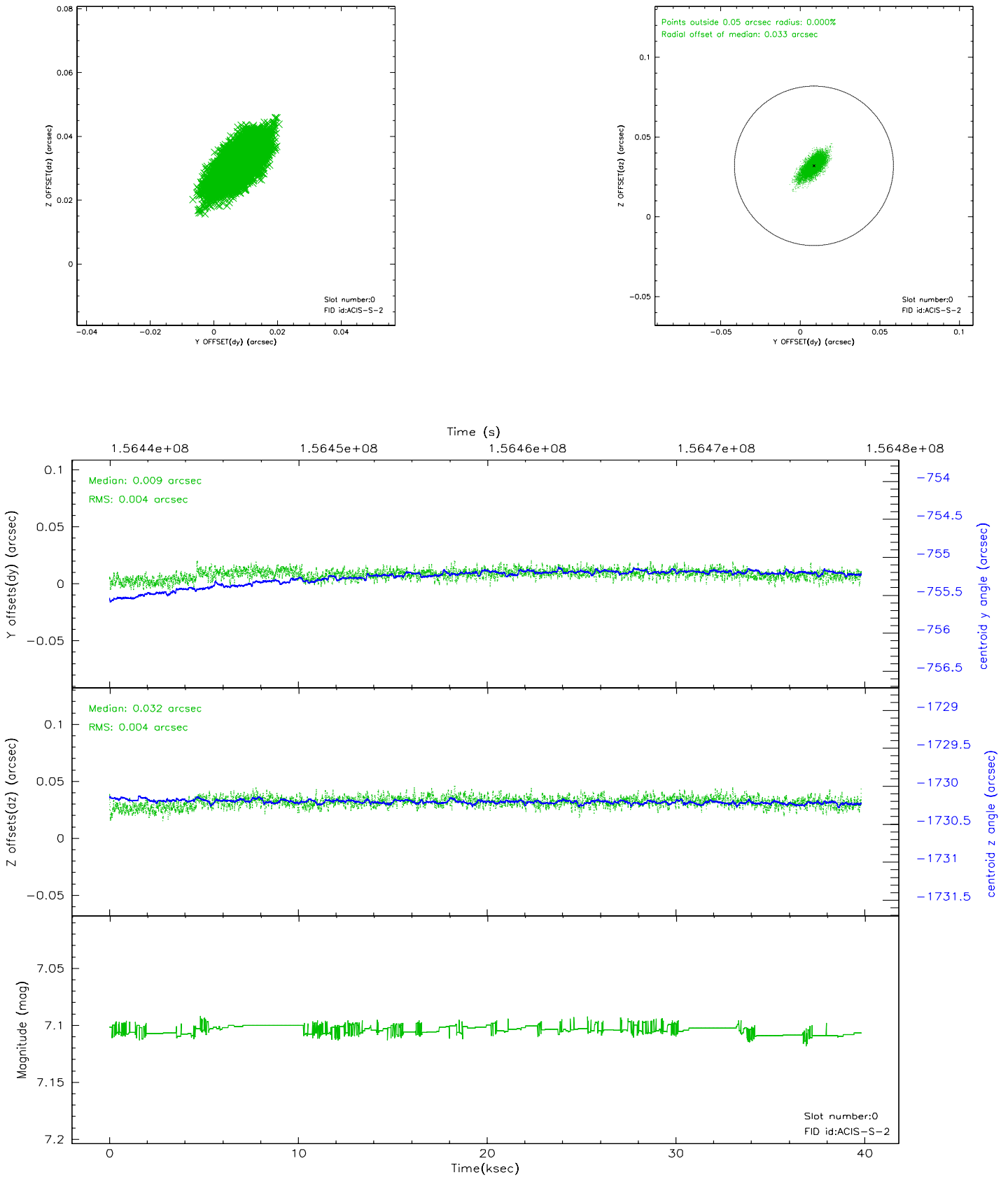


2.4.5 Slot 7

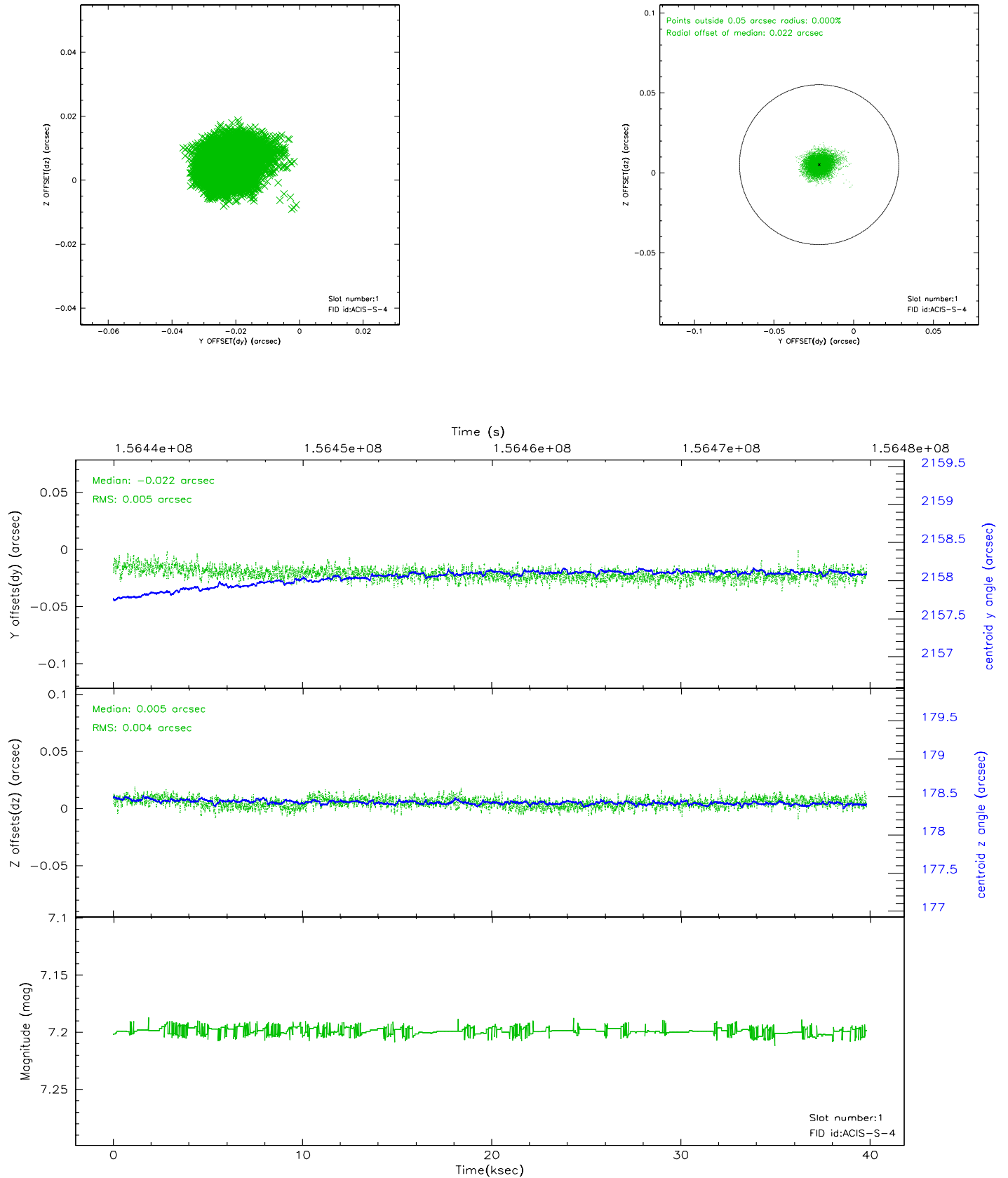


2.5 FID Slots

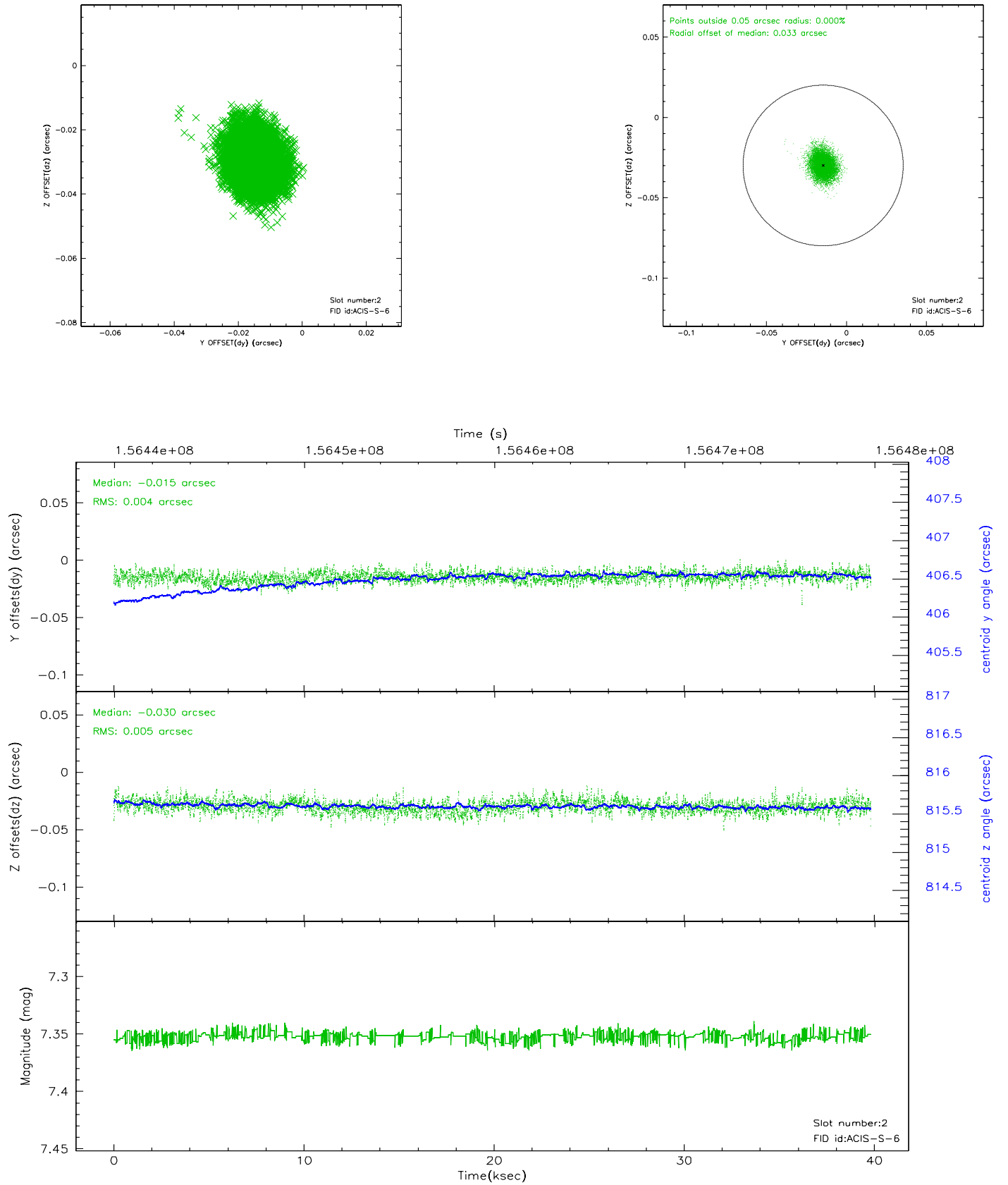
2.5.1 Slot 0



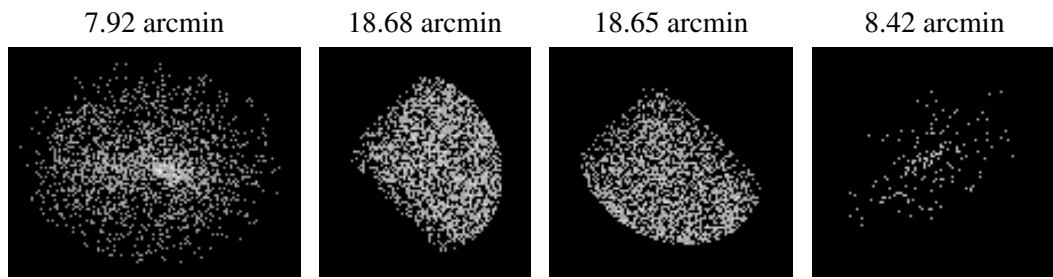
2.5.2 Slot 1



2.5.3 Slot 2



3 Point Sources



A Summary

A.1 Status

V&V Scientist	Beth Sundheim
V&V Date (YYYY-MM-DD)	2006.10.16
V&V Edition	1
V&V Disposition and Status	OK
V&V Charge Time	38.808

A.2 Comments