

V&V Reference Report

L2 ASCDS Version : 7.6.8.1

Observation 3419 - L2 Version 001
Chandra X-Ray Center

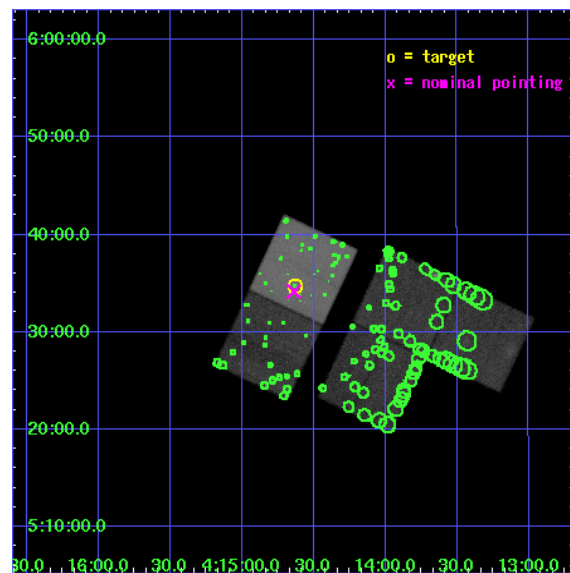
L2 Processing Date : Aug 26 2006

Contents

1	Front	2
2	OBI	3
2.1	OBI	3
2.1.1	Images	3
2.1.2	Bias	3
2.1.3	Parameters	4
2.1.4	Events	4
2.2	Compared Parameters	5
2.3	Aspect	6
2.4	Star Slots	9
2.4.1	Slot 3	9
2.4.2	Slot 4	10
2.4.3	Slot 5	11
2.4.4	Slot 6	12
2.4.5	Slot 7	13
2.5	FID Slots	14
2.5.1	Slot 0	14
2.5.2	Slot 1	15
2.5.3	Slot 2	16
3	Point Sources	17
A	Summary	18
A.1	Status	18
A.2	Comments	18

1 Front

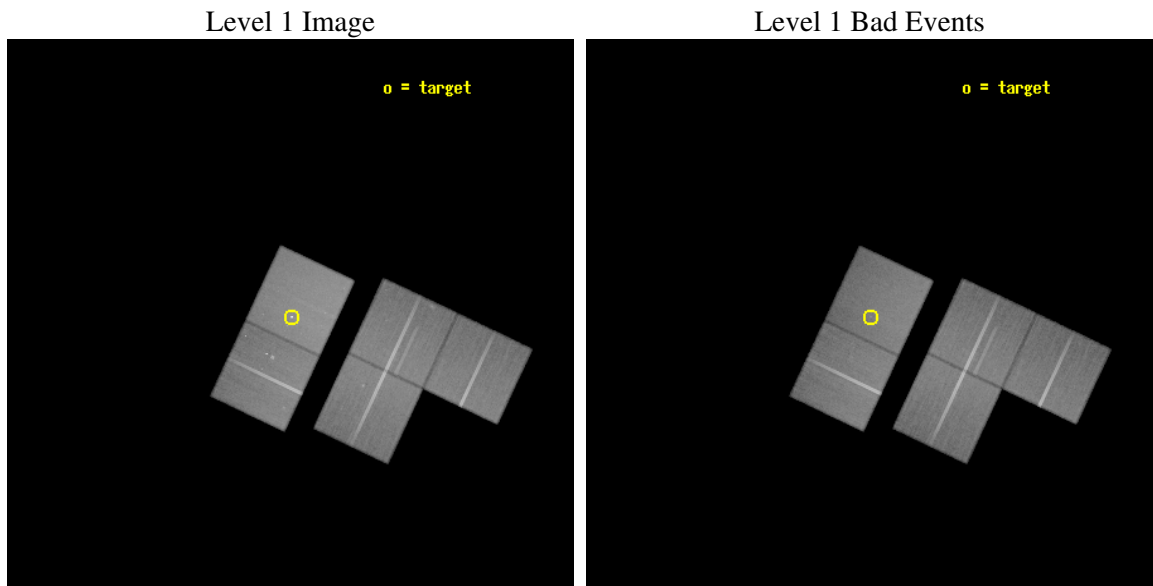
seq_num	700612
obs_id	3419
title	CHANDRA MONITORING OF A MICROLENSING EVENT IN MG J0414+0534
observer	Dr. GEORGE CHARTAS
object	MG J0414+0534
dtcycle	0
cycle	P
ra_targ	63.657083
dec_targ	5.578889
ra_nom	63.659617353057
dec_nom	5.5695051296529
roll_nom	295.24220311944
revision	2
ontime	97941.358831435
livetime	96661.682874923
ontime1	97941.358811513
ontime2	97931.935850918
ontime3	97919.372019738
ontime6	97922.51297991
ontime7	97941.358831435
l2events	571878



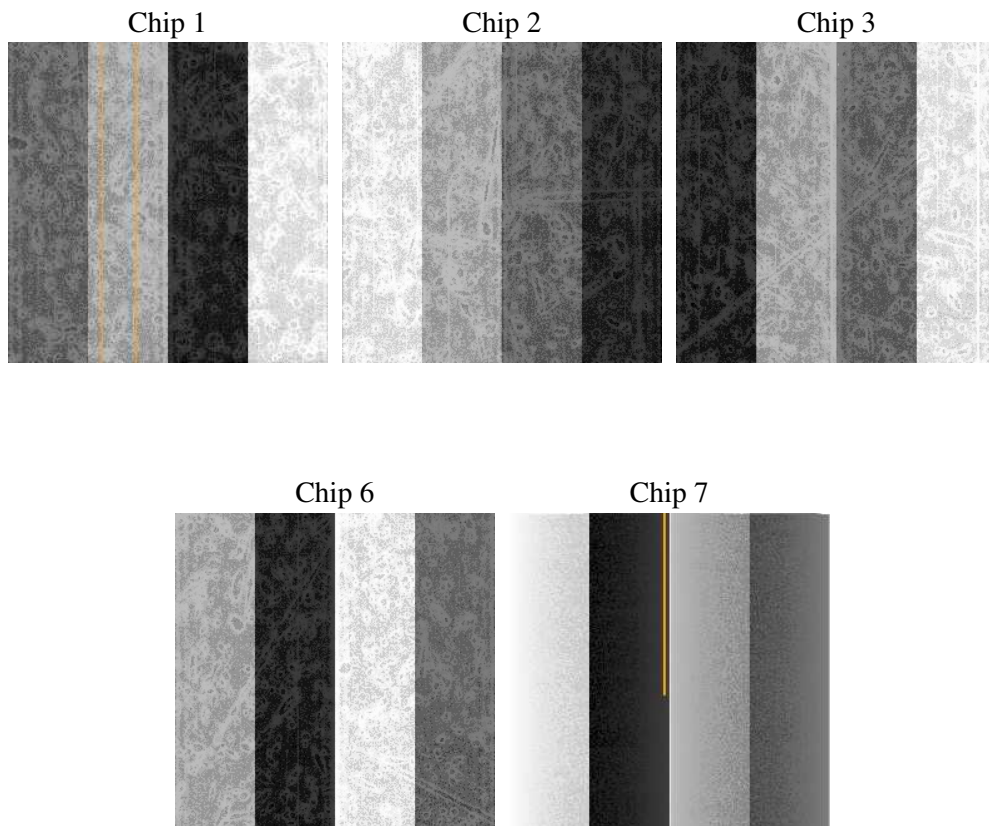
2 OBI

2.1 OBI

2.1.1 Images



2.1.2 Bias



2.1.3 Parameters

obi_num	0
ascdsver	7.6.8.1
caldbver	3.2.3
date	2006-08-26T07:52:34
revision	2

sched_exp_time	97837.256000
ontime	97945.998838112
ontime1	97945.998818189
ontime2	97936.575857595
ontime3	97924.012026414
ontime6	97927.152966678
ontime7	97945.998838112
l1events	3319651

2.1.4 Events

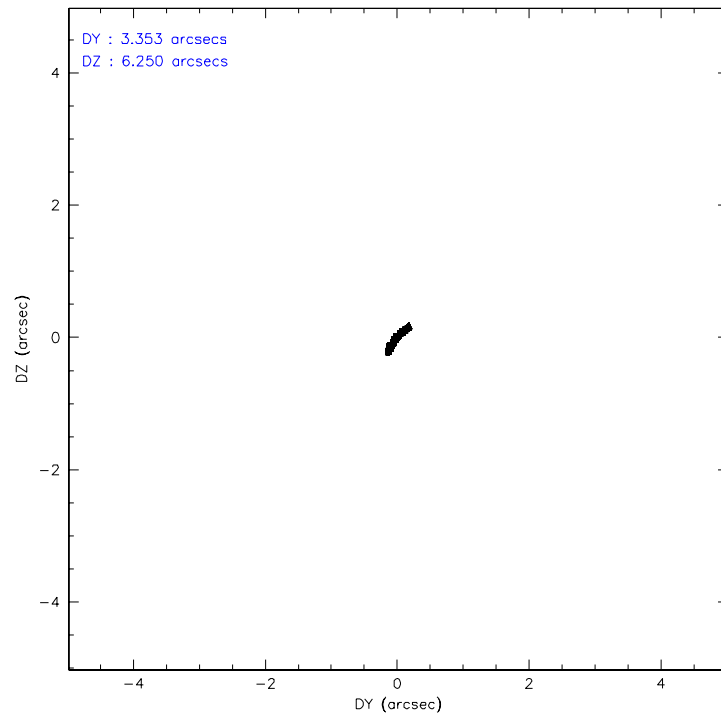
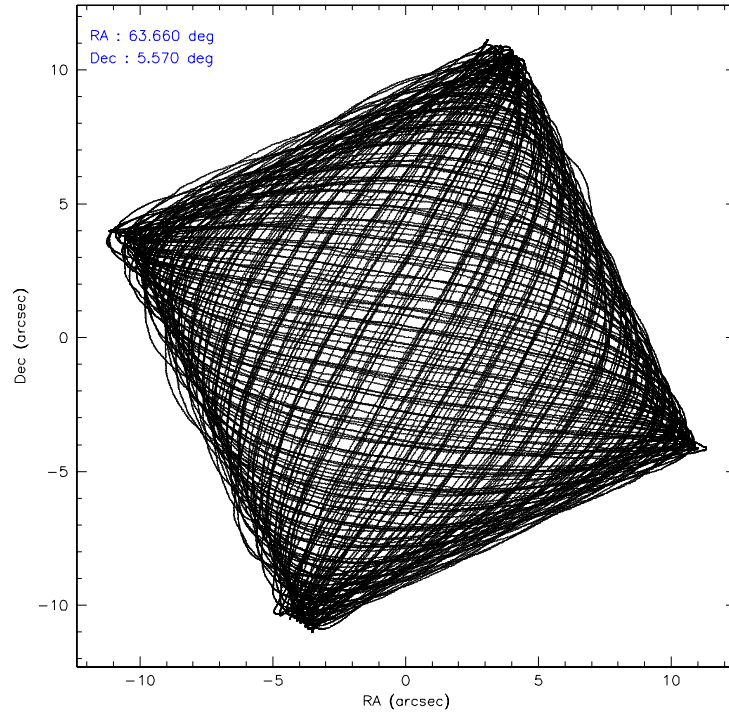
	ccd 1	ccd 2	ccd 3	ccd 6	ccd 7
level 1 events	583466	628373	627173	659196	821443
rejected events	504839	553749	551840	577962	508430
rejected %	86%	88%	87%	87%	61%

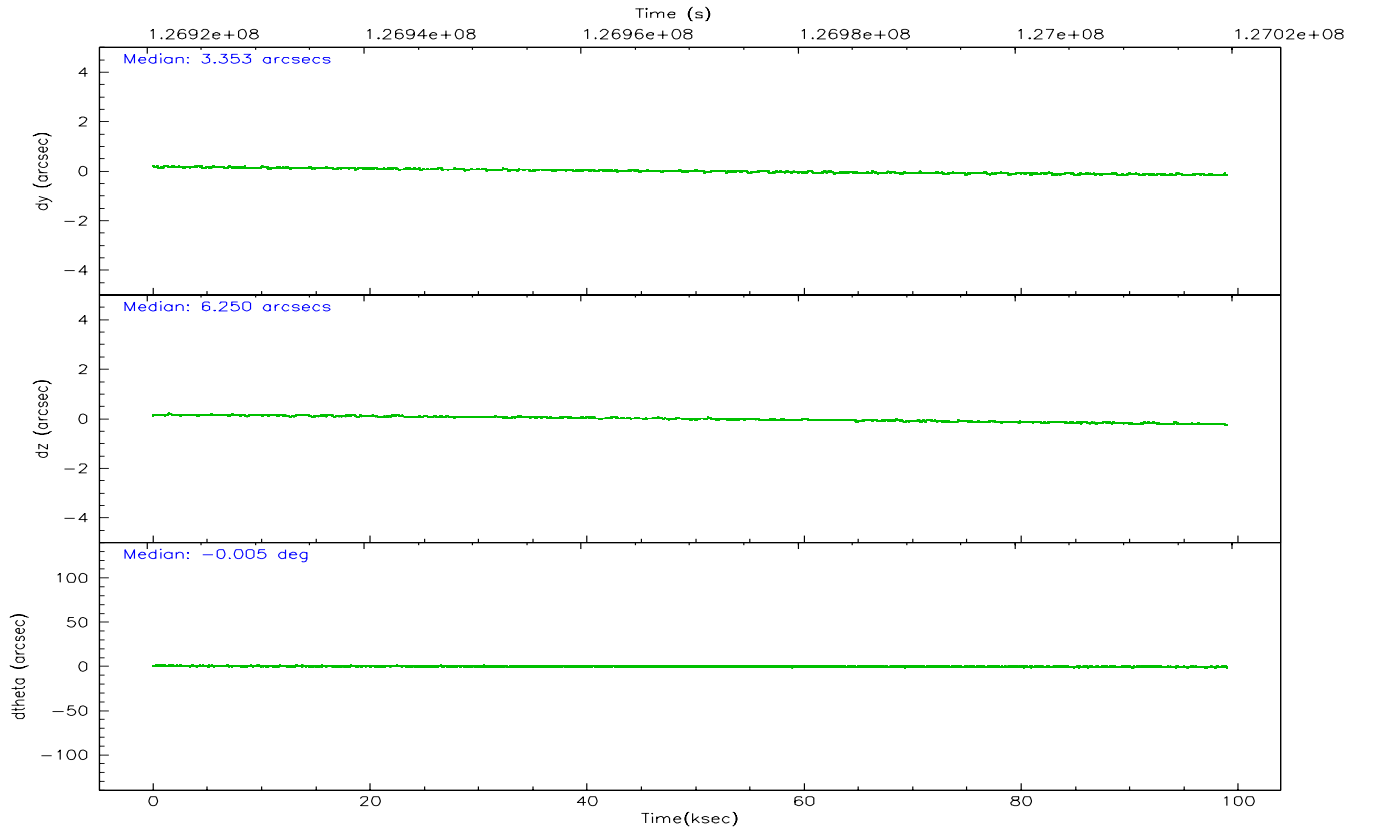
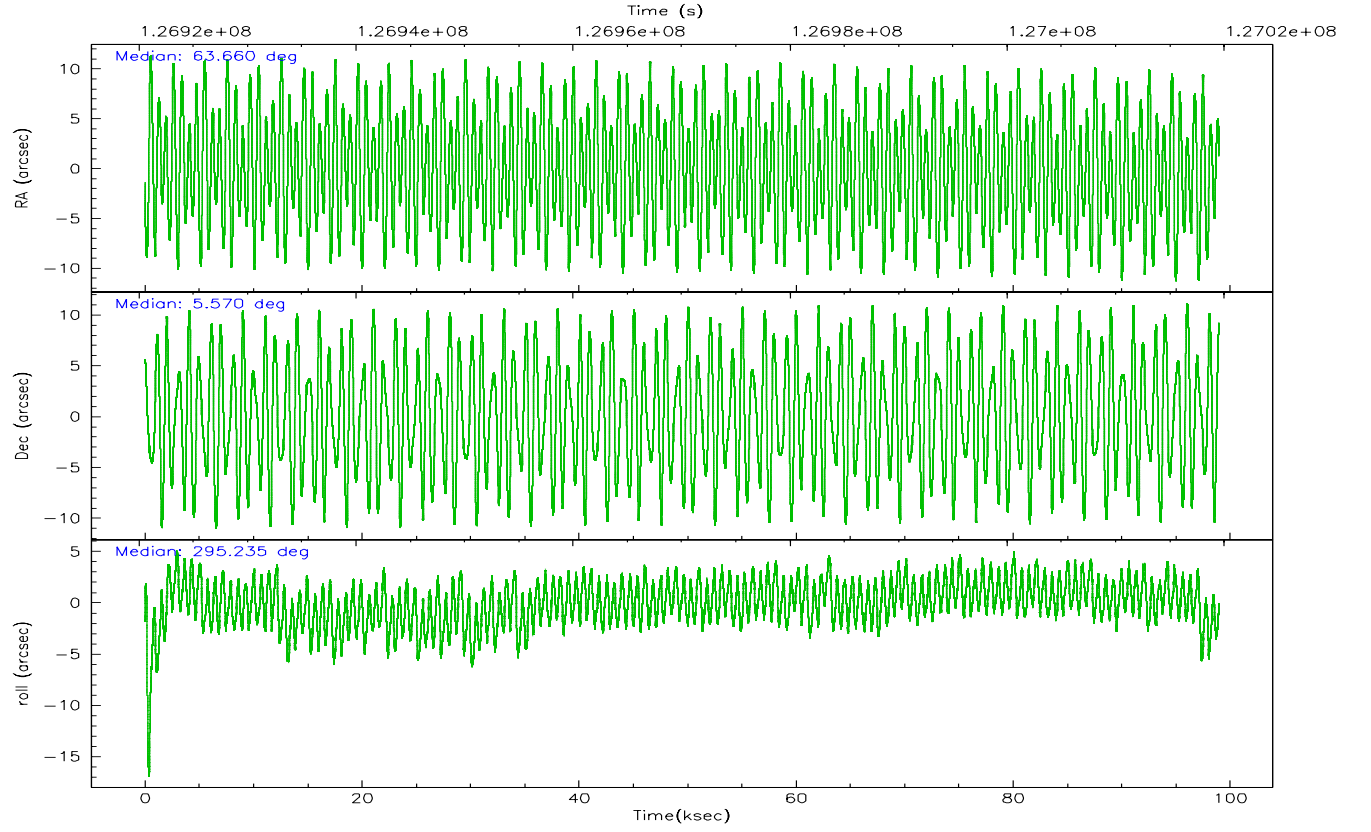
	ccd 1	ccd 2	ccd 3	ccd 6	ccd 7
grade 0 events	30635	30935	31850	34374	19486
	5%	4%	5%	5%	2%
grade 1 events	278	280	325	358	518
	0%	0%	0%	0%	0%
grade 2 events	16792	16626	15474	16402	77511
	2%	2%	2%	2%	9%
grade 3 events	7908	6856	7039	7523	16193
	1%	1%	1%	1%	1%
grade 4 events	7950	6860	6992	7382	15747
	1%	1%	1%	1%	1%
grade 5 events	24920	21588	25186	27237	52953
	4%	3%	4%	4%	6%
grade 6 events	15347	13351	13985	15561	184109
	2%	2%	2%	2%	22%
grade 7 events	479636	531877	526322	550359	454926
	82%	84%	83%	83%	55%

2.2 Compared Parameters

Parameter	Planned	Actual	Parameter	Planned	Actual
Instrument	ACIS	ACIS	Obspar format version number	6	6
Detector	ACIS-12367	ACIS-12367	Obspar file type	PREDICTED	ACTUAL
Grating	NONE	NONE	Obspar update status	NONE	UPDATED
Data mode	VFAINT	VFAINT	On-chip summing requested	N	N
Observation mode	POINTING	POINTING	Subarray requested	NONE	NONE
Pointing RA	63.636931	63.65961735305665	Alternating exposures requested	N	N
Pointing Dec	5.584777	5.569505129652921	Primary exposure time	0.000000	3.1
Pointing Roll	295.087781	295.2422031194383			
SIM focus pos (mm)	-0.684267	-0.6828225247311905			
SIM defocus (mm)	0	0.001444936568705701			
SIM translation stage pos (mm)	-190.132523	-190.1425803651734			
SIM translation stage offset (mm)	0	0.01005778216563158			
Observation start time	126921707.184000	126920266.68957			
Observation start date	2002-01-09T00:00:43	2002-01-08T23:37:46			
Observation end time	127019544.184000	127019858.76857			
Observation end date	2002-01-10T03:11:20	2002-01-10T03:17:38			
Read mode	TIMED	TIMED			

2.3 Aspect



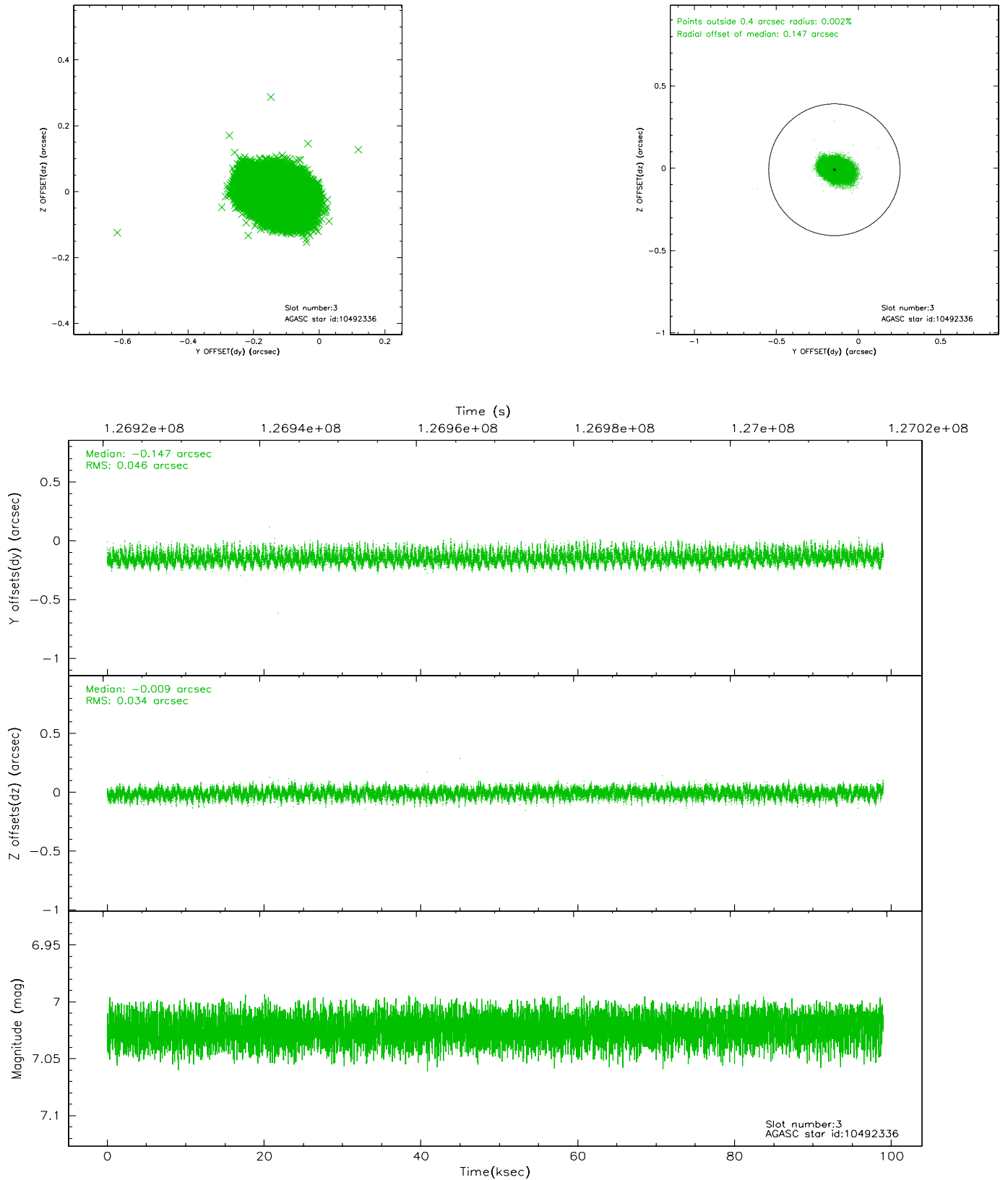


Slot Statistics

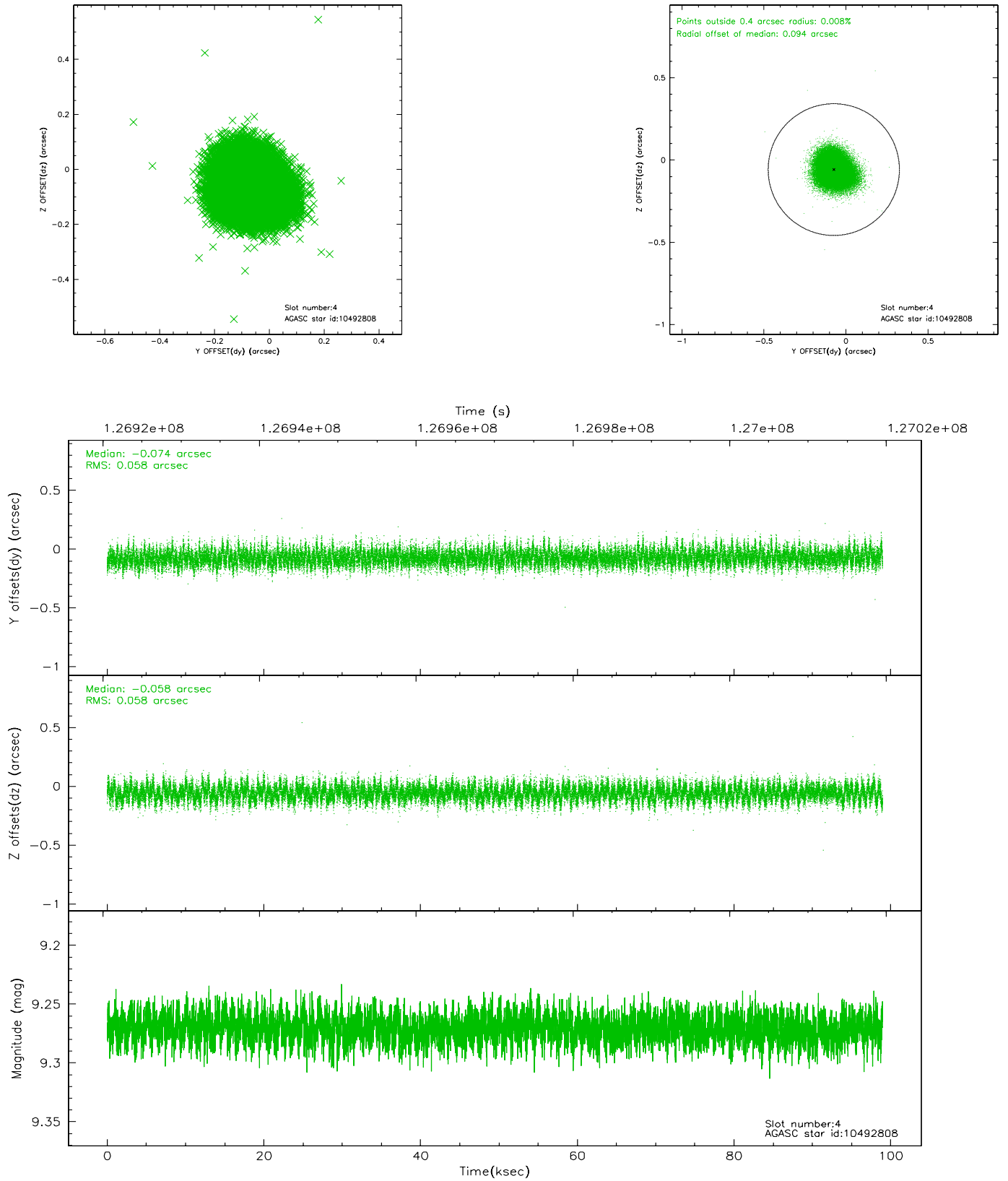
slot	status	id	mag	n_pts	med_dy	med_dz	dr1	dr2	ra	dec	mean_y	mean_z
0	FID	ACIS-S-2	7.12	24140	-0.020	0.028	0.007	0.012	0.000000	0.000000	-755.99	-1727.32
1	FID	ACIS-S-4	7.20	24136	-0.043	0.002	0.006	0.010	0.000000	0.000000	2157.26	181.28
2	FID	ACIS-S-5	7.24	24139	0.032	-0.022	0.008	0.014	0.000000	0.000000	-1808.93	174.75
3	GUIDE	10492336	7.02	48278	-0.147	-0.009	0.060	0.101	63.181049	5.030869	1113.07	-2325.99
4	GUIDE	10492808	9.27	48262	-0.074	-0.058	0.087	0.140	63.555055	6.190155	-2097.51	658.09
5	GUIDE	10495504	9.64	48246	0.148	0.046	0.090	0.148	63.747259	5.177624	1496.12	-263.09
6	GUIDE	10098256	9.98	48245	-0.003	-0.021	0.126	0.205	63.475128	4.998472	1666.43	-1420.52
7	GUIDE	10493912	9.38	48106	0.071	0.046	0.095	0.159	63.610162	5.180568	1278.07	-703.77

2.4 Star Slots

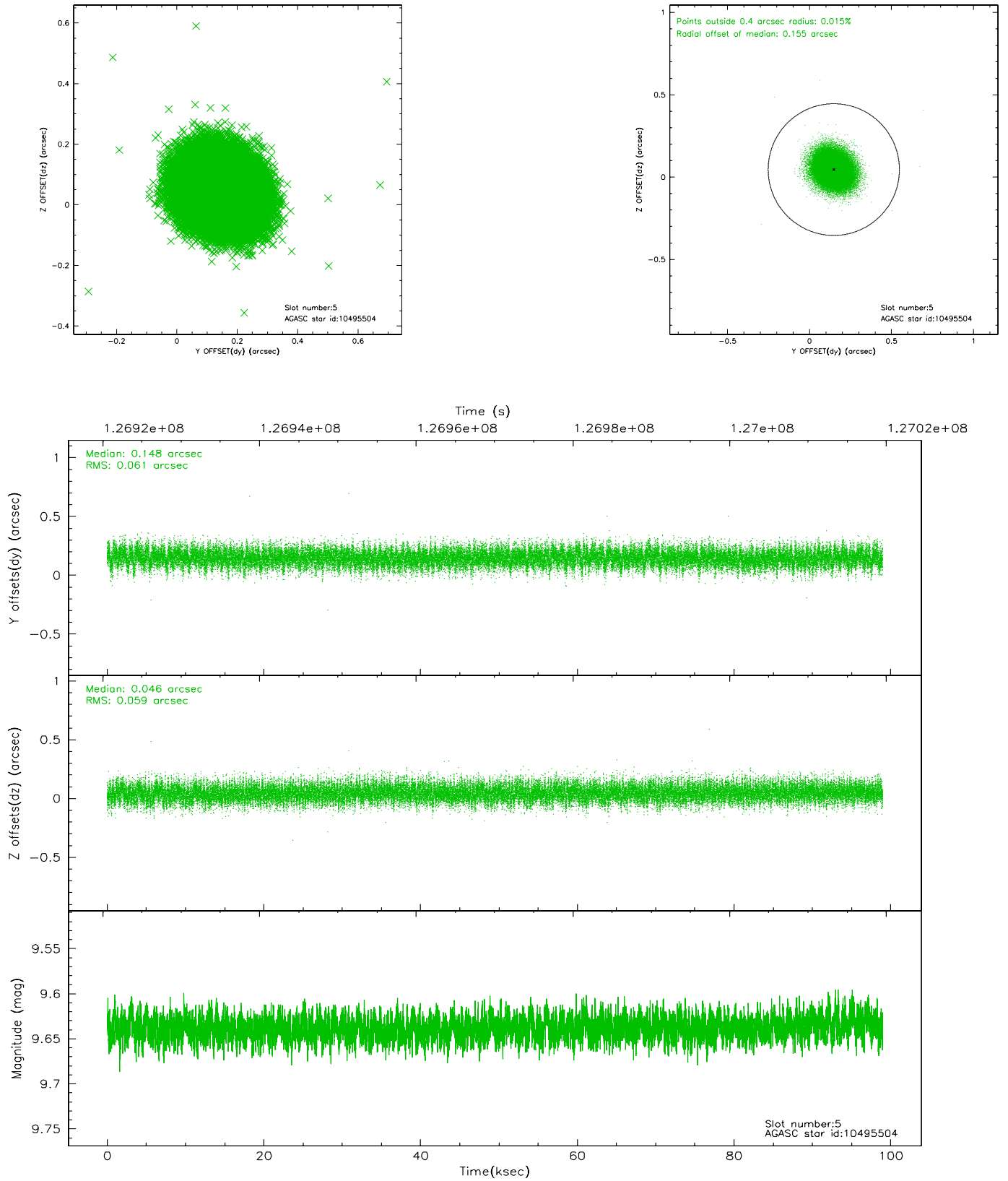
2.4.1 Slot 3



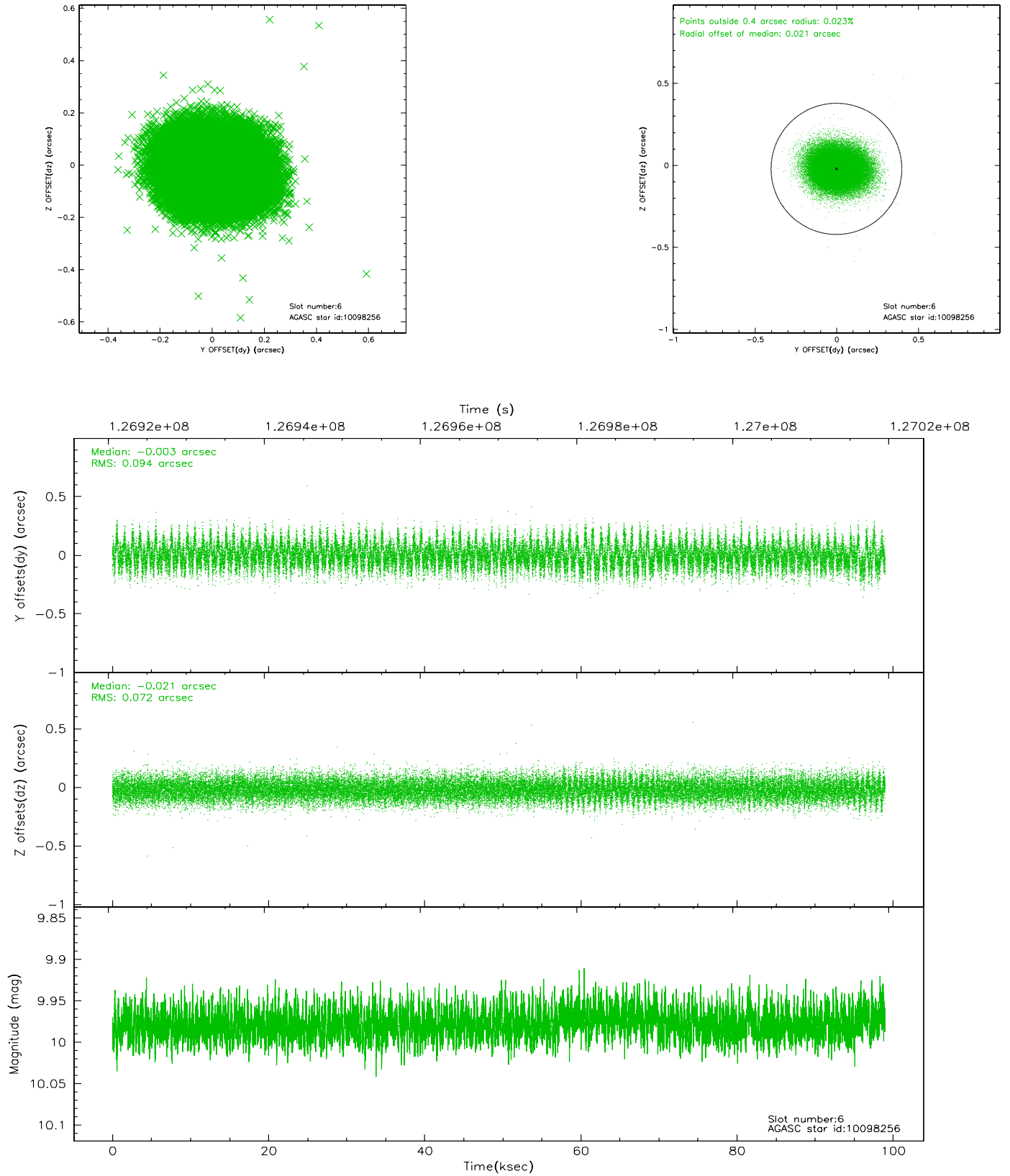
2.4.2 Slot 4



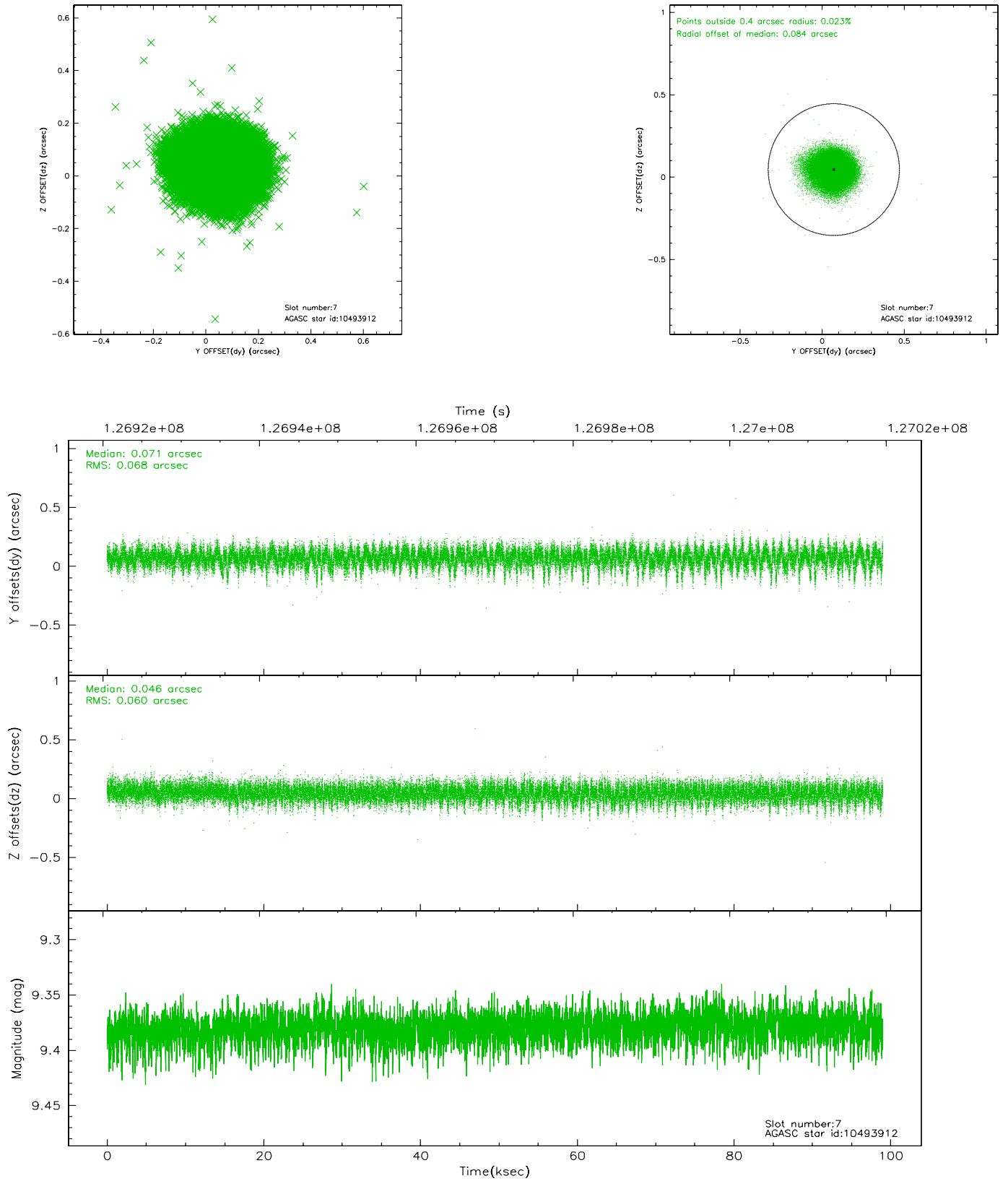
2.4.3 Slot 5



2.4.4 Slot 6

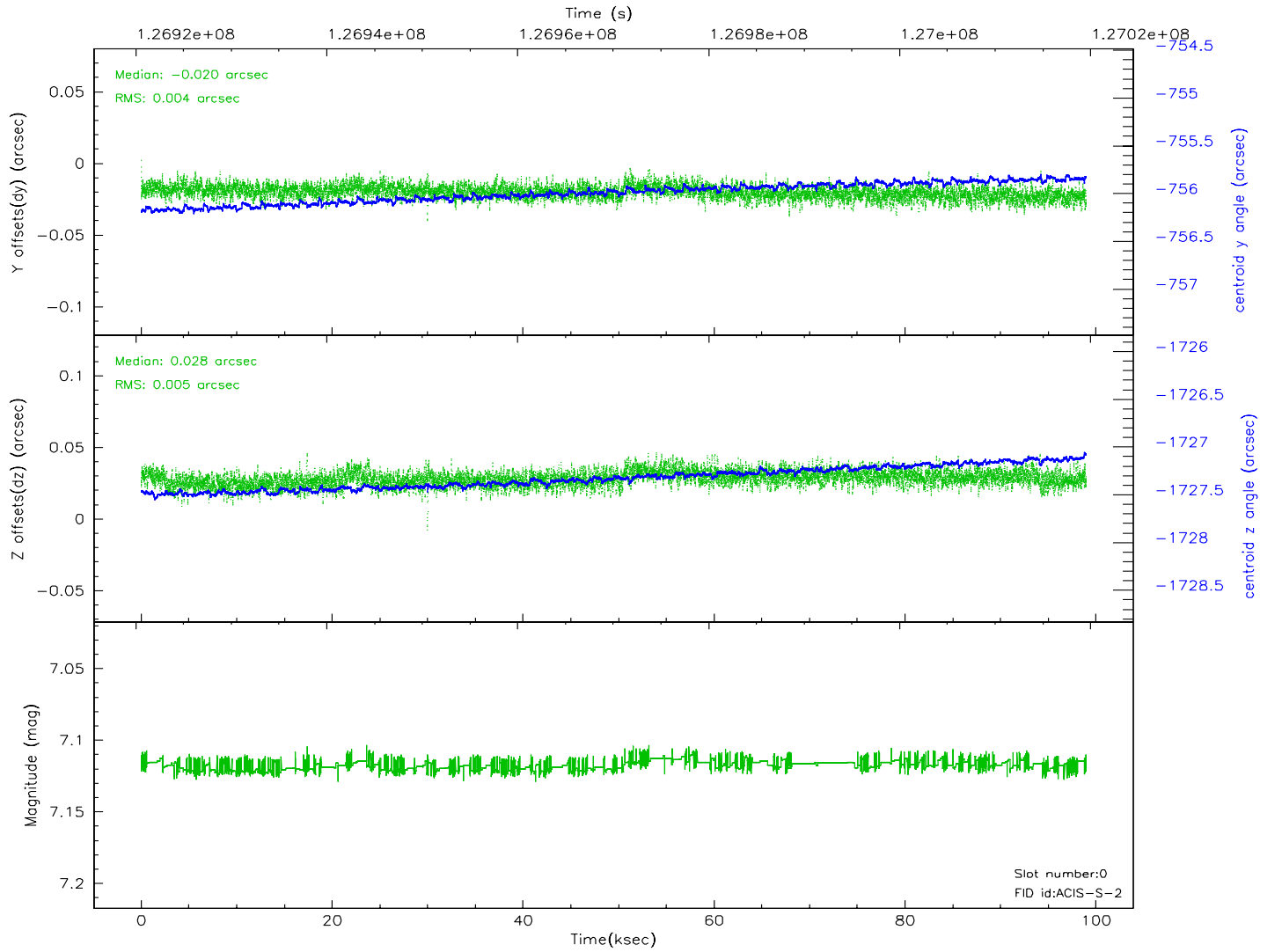
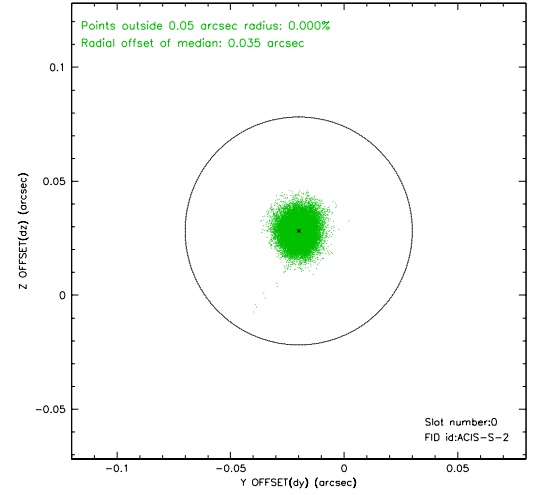
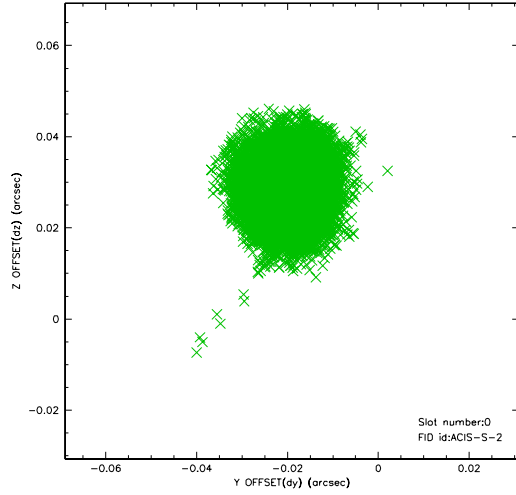


2.4.5 Slot 7

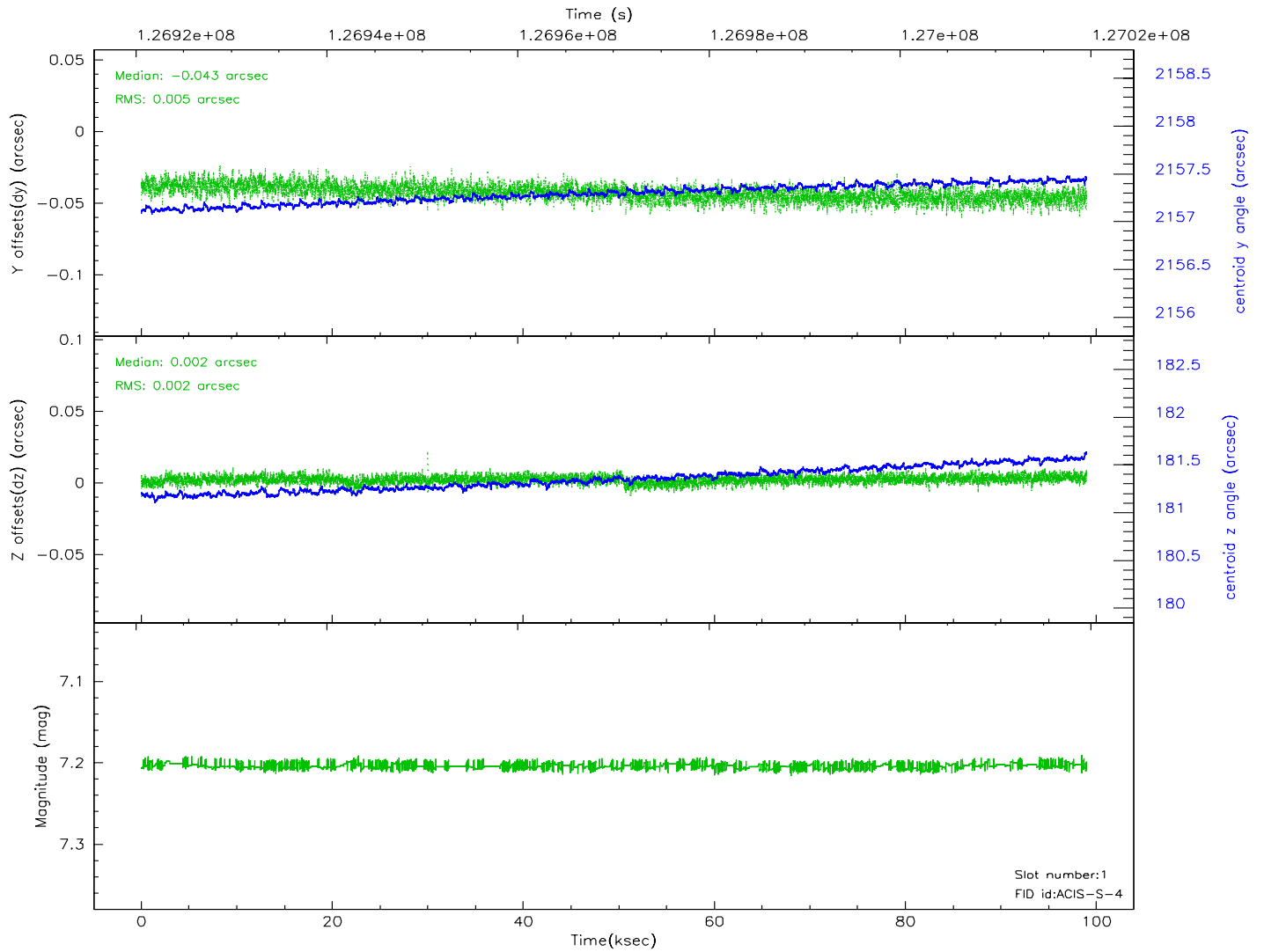
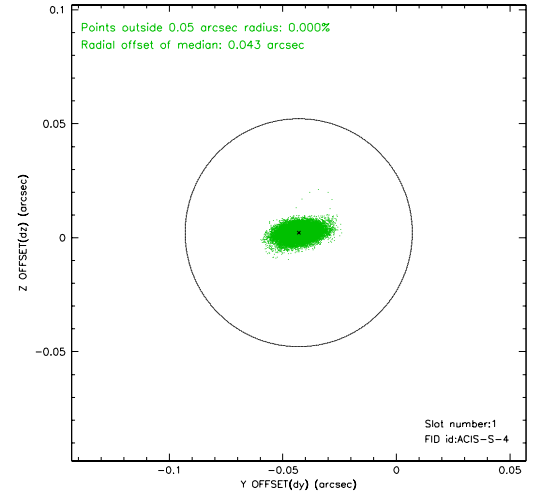
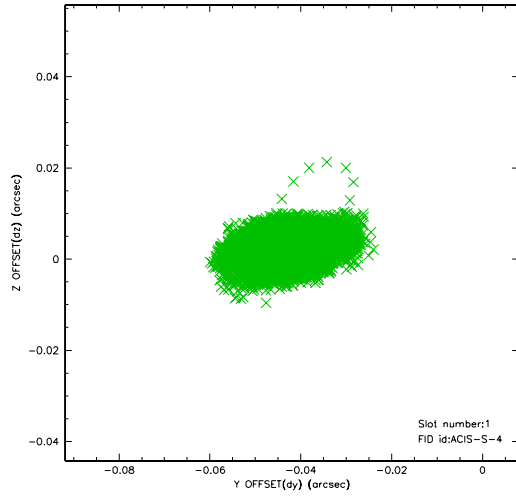


2.5 FID Slots

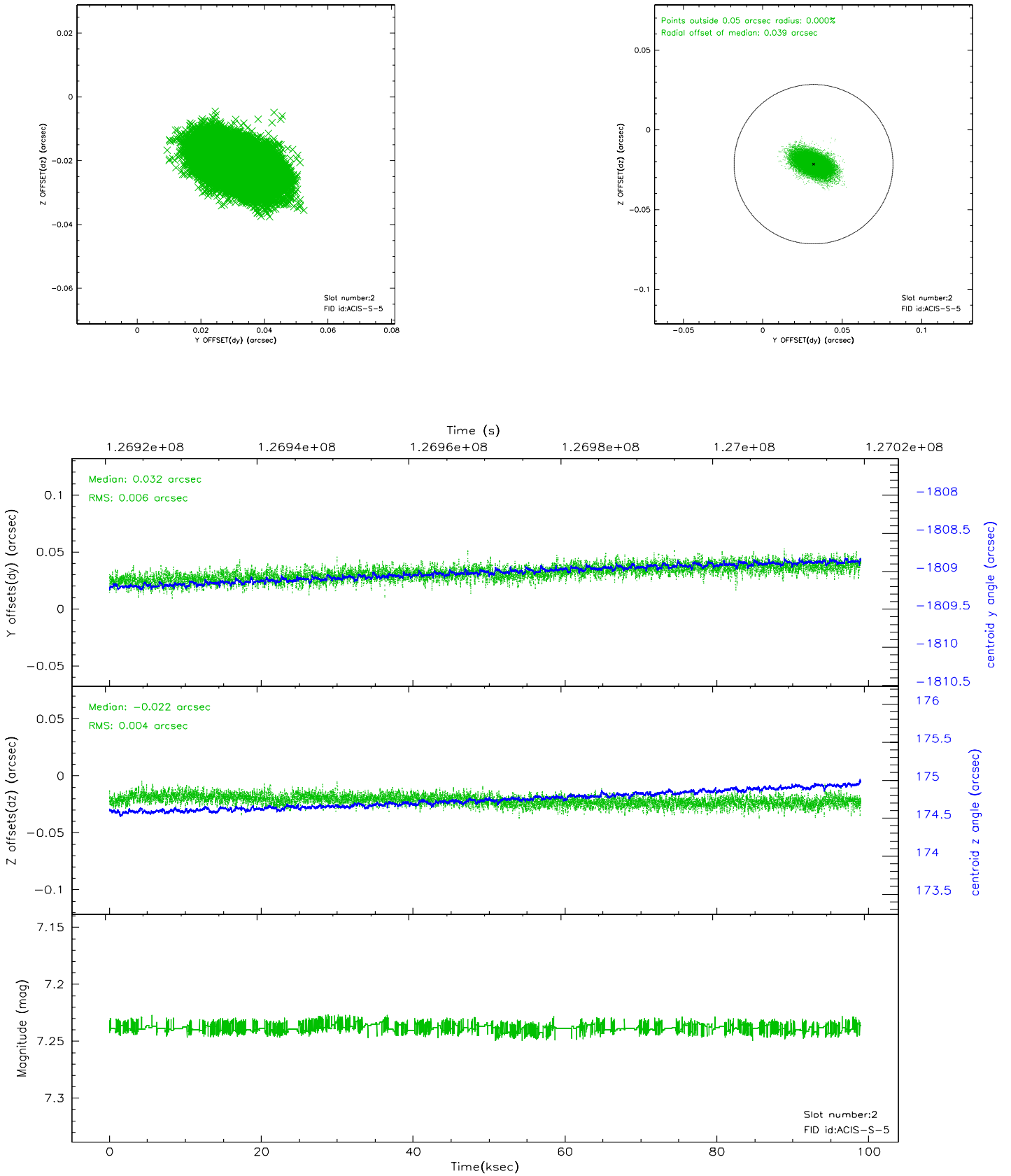
2.5.1 Slot 0



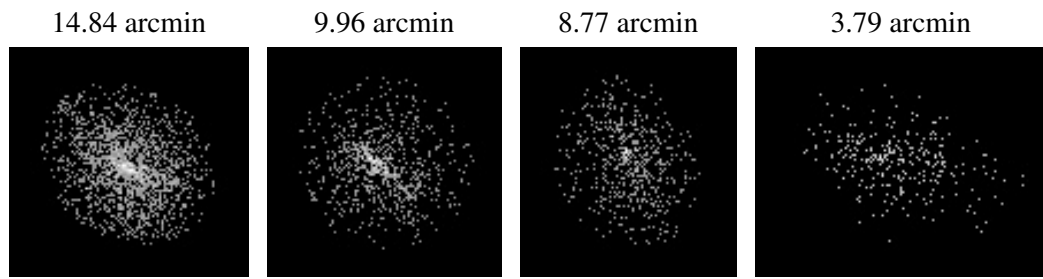
2.5.2 Slot 1



2.5.3 Slot 2



3 Point Sources



A Summary

A.1 Status

V&V Scientist	Beth Sundheim
V&V Date (YYYY-MM-DD)	2006.08.28
V&V Edition	1
V&V Disposition and Status	OK
V&V Charge Time	97.944

A.2 Comments

Focal plane temperature rises sharply in last ~40 ksec.