

V&V Reference Report

L2 ASCDS Version : 7.6.9

Observation 3159 - L2 Version 001
Chandra X-Ray Center

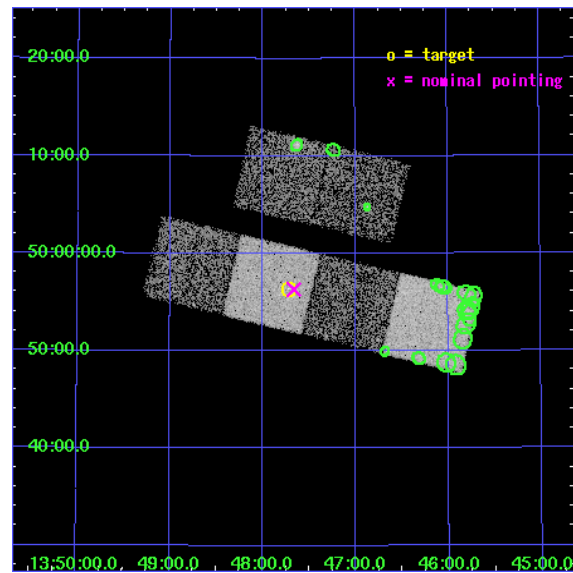
L2 Processing Date : Sep 14 2006

Contents

1	Front	2
2	OBI	3
2.1	OBI	3
2.1.1	Images	3
2.1.2	Bias	3
2.1.3	Parameters	4
2.1.4	Events	4
2.2	Compared Parameters	5
2.3	Aspect	6
2.4	Star Slots	9
2.4.1	Slot 3	9
2.4.2	Slot 4	10
2.4.3	Slot 5	11
2.4.4	Slot 6	12
2.4.5	Slot 7	13
2.5	FID Slots	14
2.5.1	Slot 0	14
2.5.2	Slot 1	15
2.5.3	Slot 2	16
3	Point Sources	17
A	Summary	18
A.1	Status	18
A.2	Comments	18

1 Front

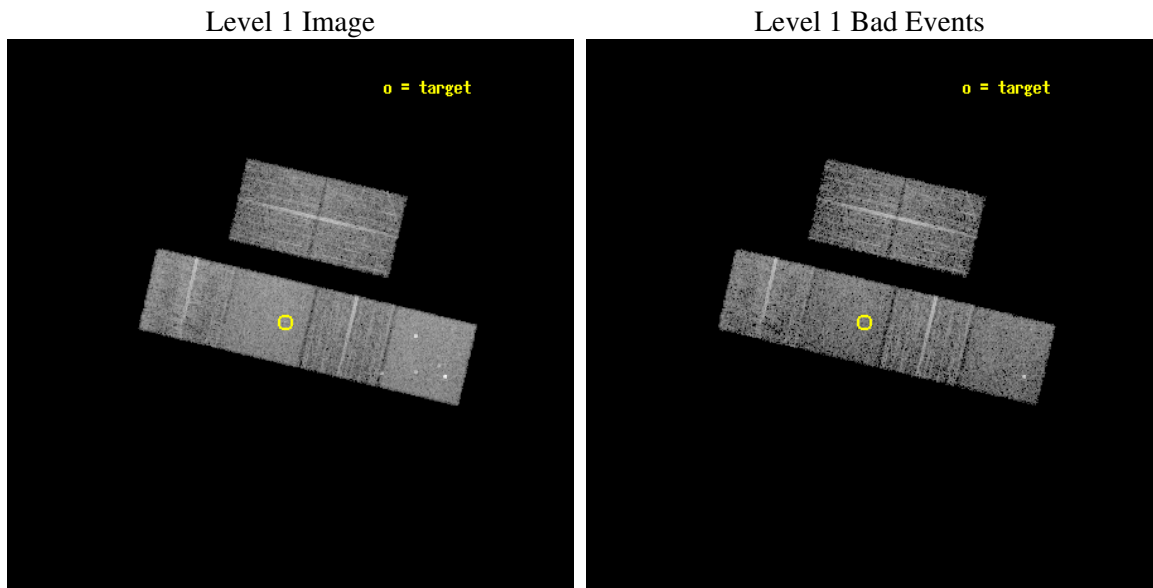
seq_num	700598
obs_id	3159
title	A CHANDRA SURVEY OF THE MOST LUMINOUS QUASARS AT $Z > 4$
observer	Professor Gordon Garmire
object	PSS1347+4956
dtcycle	0
cycle	P
ra_targ	206.930833
dec_targ	49.939167
ra_nom	206.91589982319
dec_nom	49.938673885075
roll_nom	193.31714133295
revision	2
ontime	5958.3999778032
livetime	5882.9511295666
ontime2	5958.3999778032
ontime3	5958.3999778032
ontime5	5958.3999778032
ontime6	5958.3999778032
ontime7	5958.3999778032
ontime8	5955.158977598
l2events	59175



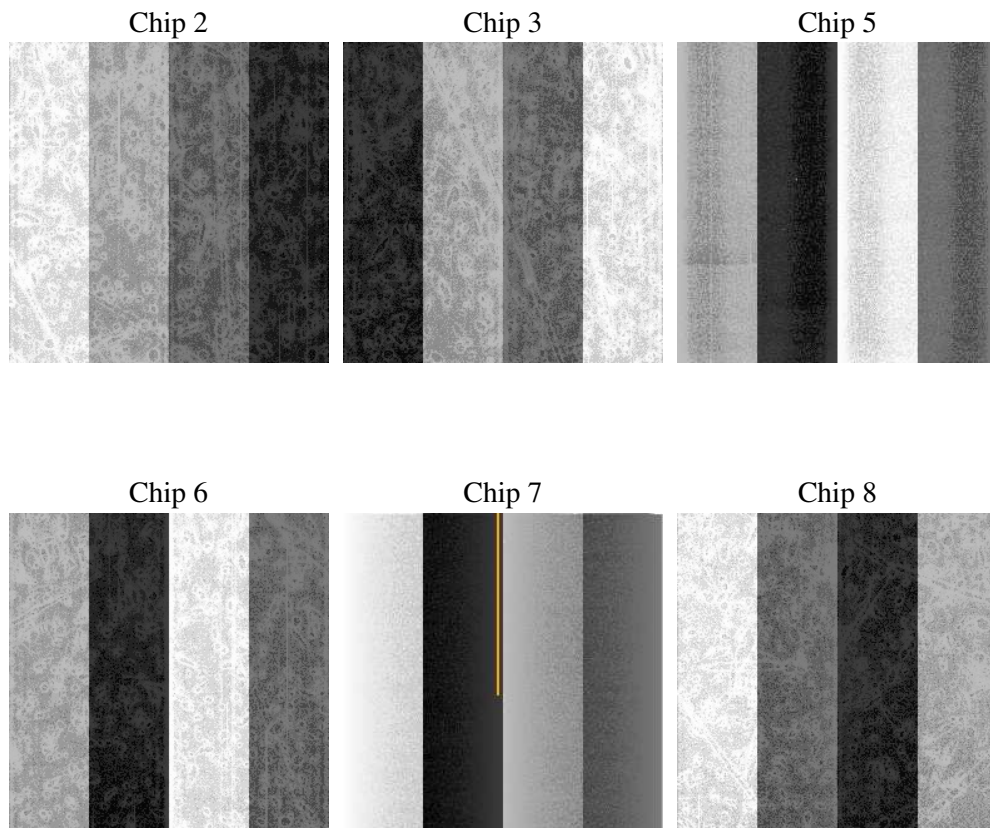
2 OBI

2.1 OBI

2.1.1 Images



2.1.2 Bias



2.1.3 Parameters

obi_num	0
ascdsver	7.6.9
caldbver	3.2.3
date	2006-09-14T20:42:38
revision	2

sched_exp_time	6000.000000
ontime	5963.4444931746
ontime2	5963.4444732368
ontime3	5963.4444732368
ontime5	5963.4444732368
ontime6	5963.4444732368
ontime7	5963.4444931746
ontime8	5960.2034730315
l1events	279899

2.1.4 Events

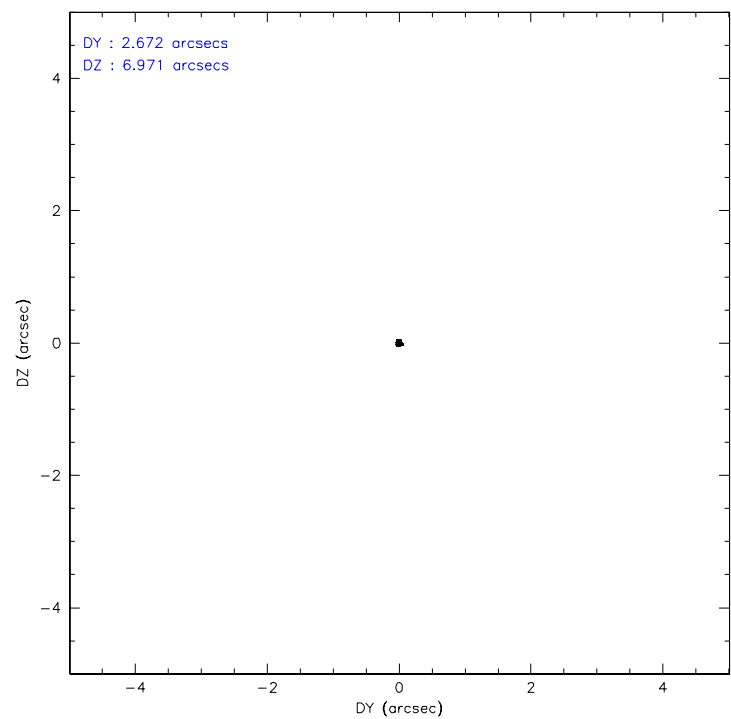
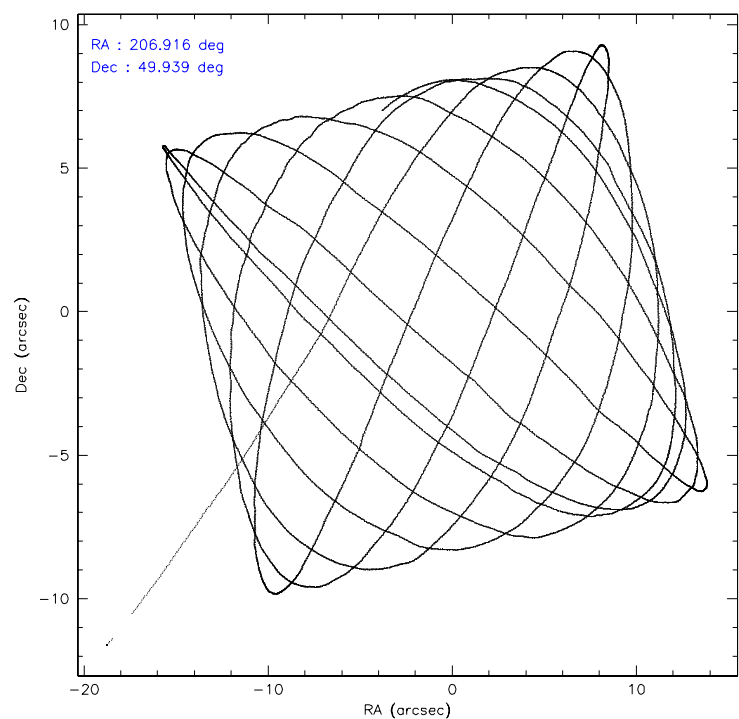
	ccd 2	ccd 3	ccd 5	ccd 6	ccd 7	ccd 8
level 1 events	40596	38992	57915	41057	51714	49625
rejected events	36134	34003	32176	36476	31777	39673
rejected %	89%	87%	55%	88%	61%	79%

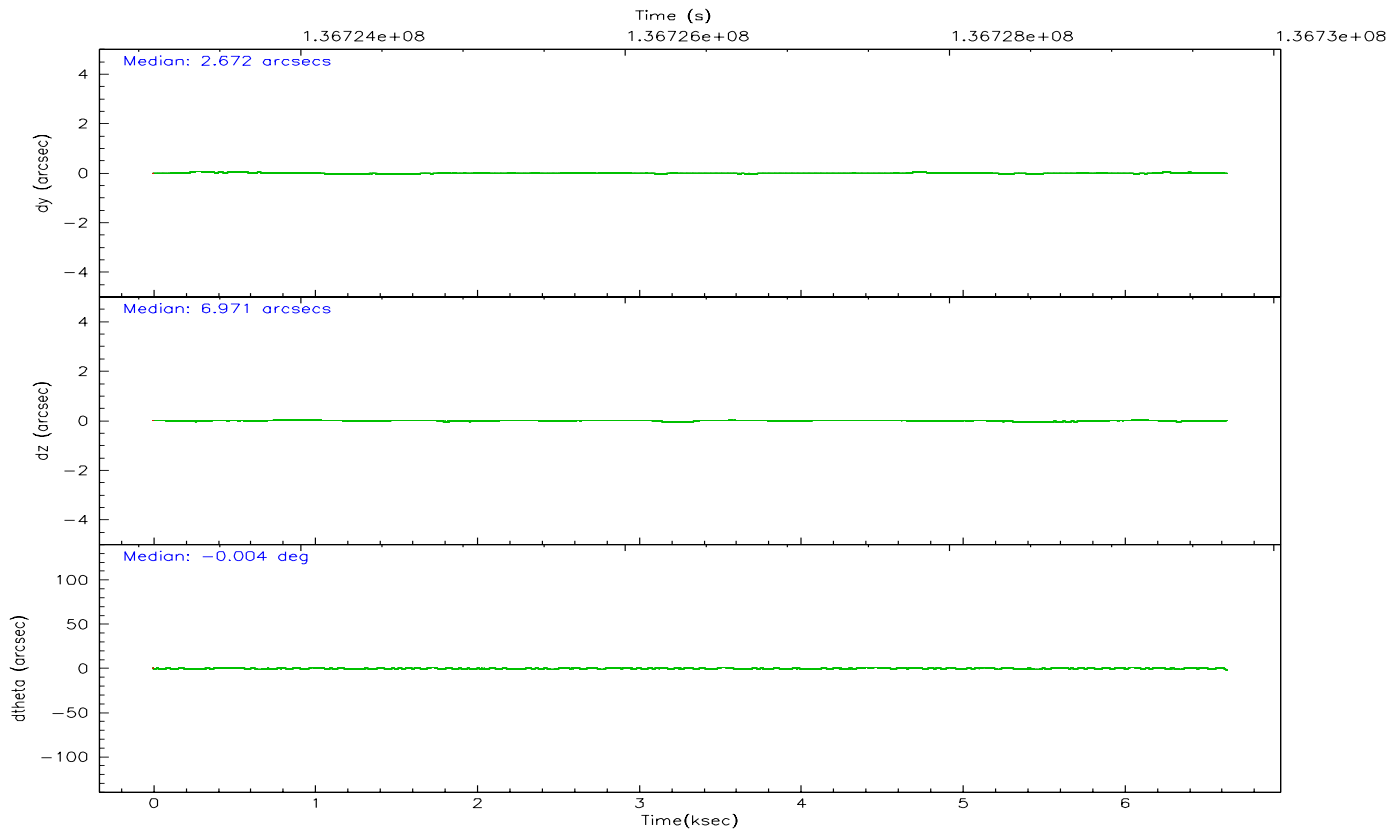
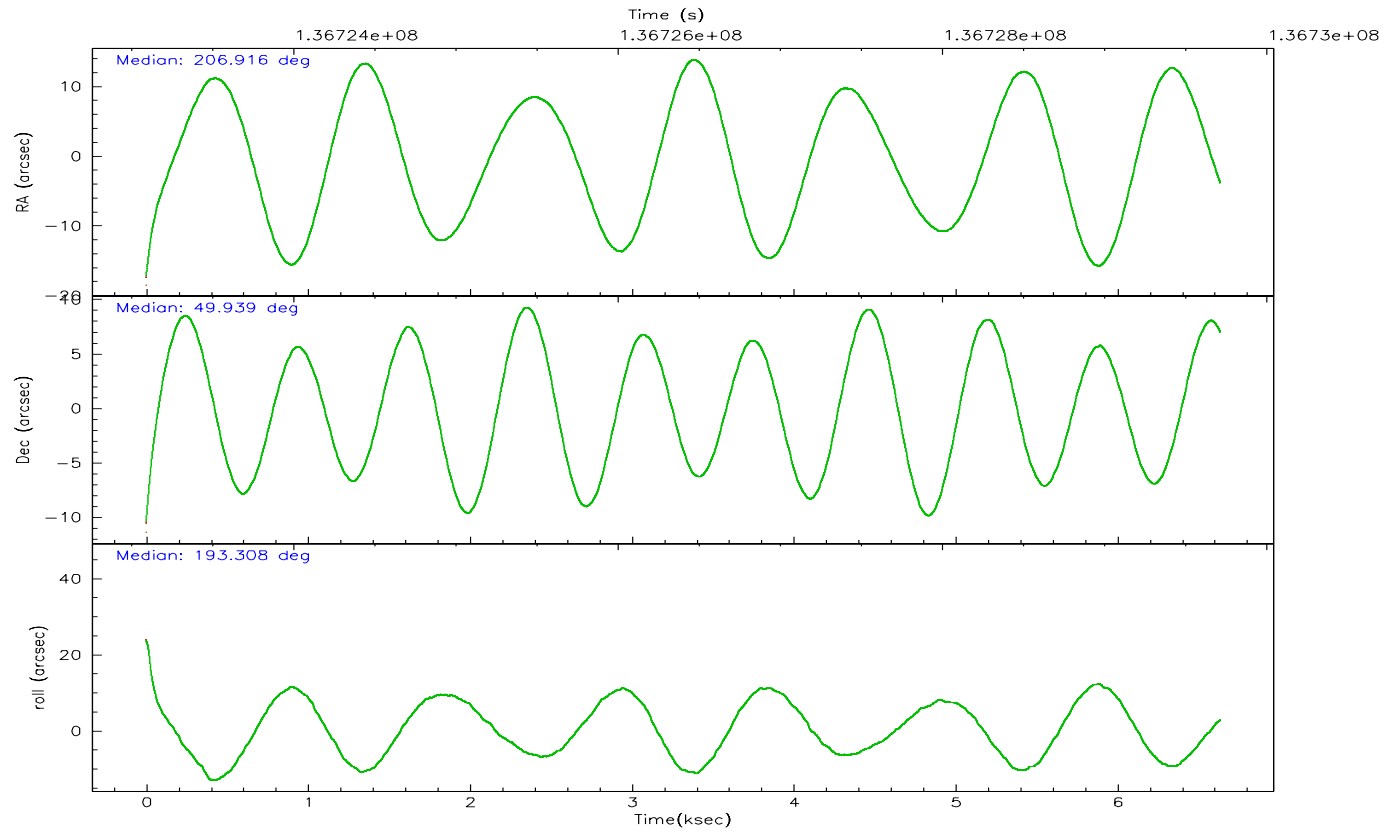
	ccd 2	ccd 3	ccd 5	ccd 6	ccd 7	ccd 8
grade 0 events	1860	2342	2717	1813	1205	3132
	4%	6%	4%	4%	2%	6%
grade 1 events	21	27	52	18	25	25
	0%	0%	0%	0%	0%	0%
grade 2 events	998	985	7932	933	4938	2280
	2%	2%	13%	2%	9%	4%
grade 3 events	397	458	596	513	1054	986
	0%	1%	1%	1%	2%	1%
grade 4 events	415	419	551	444	1058	969
	1%	1%	0%	1%	2%	1%
grade 5 events	1395	1550	2699	1739	3438	2105
	3%	3%	4%	4%	6%	4%
grade 6 events	802	790	13976	879	11705	2597
	1%	2%	24%	2%	22%	5%
grade 7 events	34708	32421	29392	34718	28291	37531
	85%	83%	50%	84%	54%	75%

2.2 Compared Parameters

Parameter	Planned	Actual	Parameter	Planned	Actual
Instrument	ACIS	ACIS	Obspar format version number	6	6
Detector	ACIS-235678	ACIS-235678	Obspar file type	PREDICTED	ACTUAL
Grating	NONE	NONE	Obspar update status	NONE	UPDATED
Data mode	FAINT	FAINT	Number of optional ACIS chips dropped	0	0
Observation mode	POINTING	POINTING	On-chip summing requested	N	N
Pointing RA	206.946231	206.9158998231868	Subarray requested	NONE	NONE
Pointing Dec	49.957568	49.93867388507491	Alternating exposures requested	N	N
Pointing Roll	193.137278	193.3171413329498	Primary exposure time	0.000000	3.2
SIM focus pos (mm)	-0.684267	-0.6828225247311905			
SIM defocus (mm)	0	0.001444936568705701			
SIM translation stage pos (mm)	-190.132523	-190.1400660498719			
SIM translation stage offset (mm)	0	0.00754346686406393			
Observation start time	136723720.184000	136722541.96121			
Observation start date	2002-05-02T10:47:36	2002-05-02T10:29:01			
Observation end time	136729720.184000	136730103.38652			
Observation end date	2002-05-02T12:27:36	2002-05-02T12:35:03			
Read mode	TIMED	TIMED			

2.3 Aspect



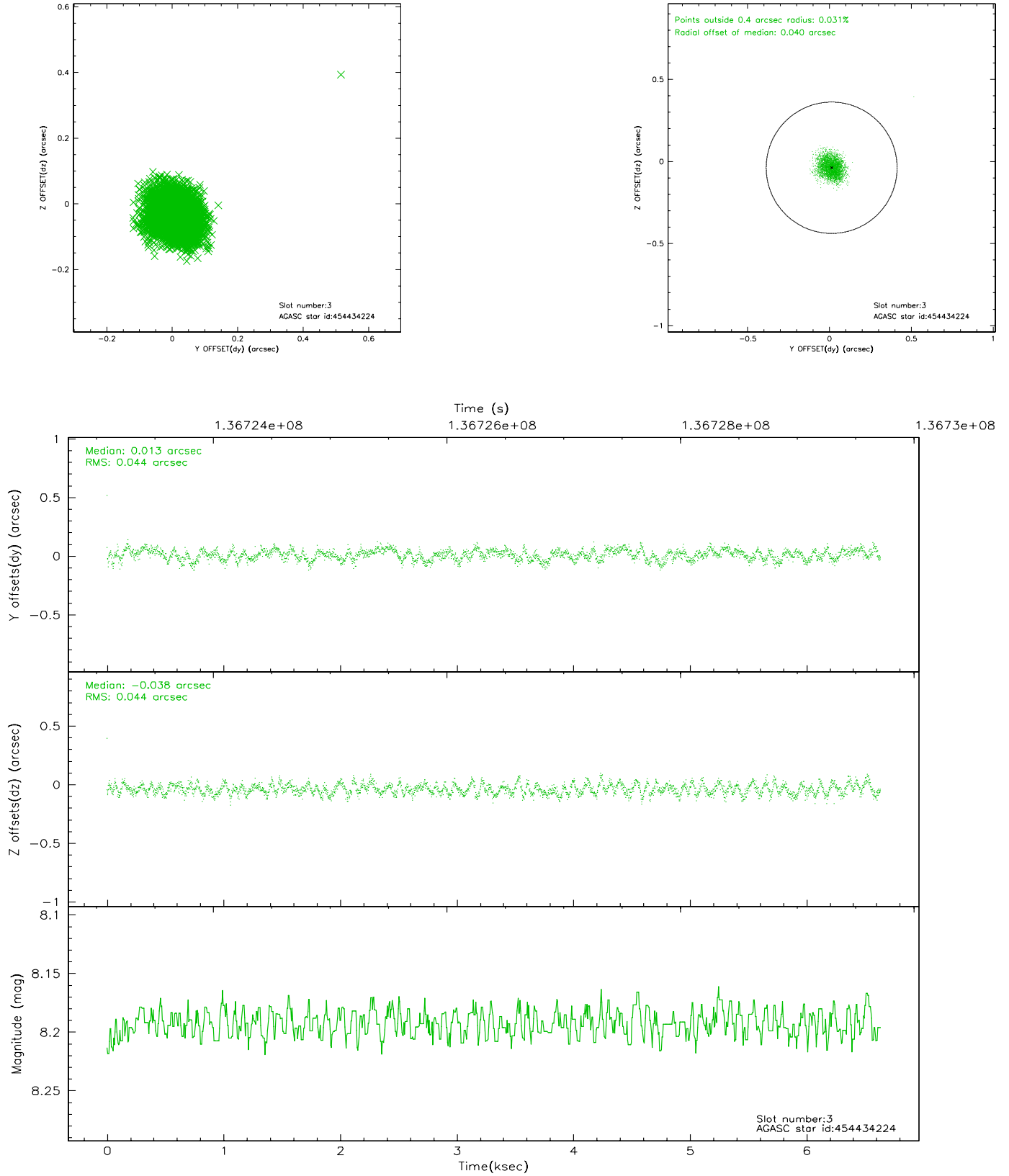


Slot Statistics

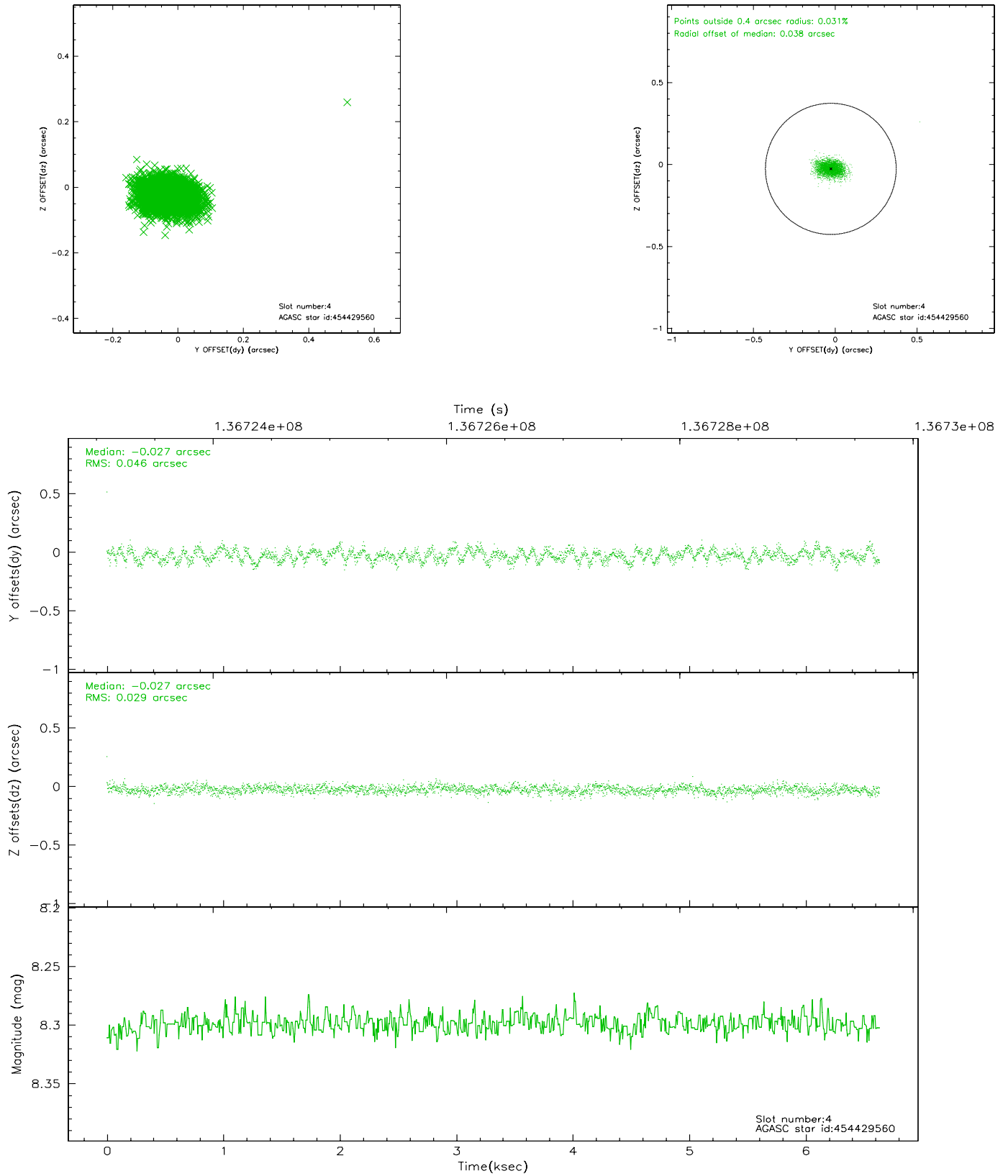
slot	status	id	mag	n_pts	med_dy	med_dz	dr1	dr2	ra	dec	mean_y	mean_z
0	FID	ACIS-S-2	7.11	1619	-0.007	0.029	0.006	0.011	0.000000	0.000000	-755.30	-1728.11
1	FID	ACIS-S-4	7.20	1619	-0.081	-0.004	0.005	0.008	0.000000	0.000000	2157.49	179.45
2	FID	ACIS-S-5	7.24	1619	0.057	-0.016	0.006	0.011	0.000000	0.000000	-1806.96	174.08
3	GUIDE	454434224	8.19	3238	0.013	-0.038	0.066	0.103	207.312110	49.402692	-381.43	2138.24
4	GUIDE	454429560	8.30	3238	-0.027	-0.027	0.057	0.093	208.000020	49.950913	-2376.61	562.47
5	GUIDE	454691504	8.90	3232	-0.056	0.020	0.062	0.099	205.975257	50.280822	1906.94	-1654.34
6	GUIDE	454829104	8.89	3235	-0.108	0.107	0.071	0.115	206.635917	50.516953	234.56	-2124.05
7	GUIDE	454696696	9.42	3234	0.183	-0.058	0.083	0.134	206.056542	50.275512	1730.99	-1591.93

2.4 Star Slots

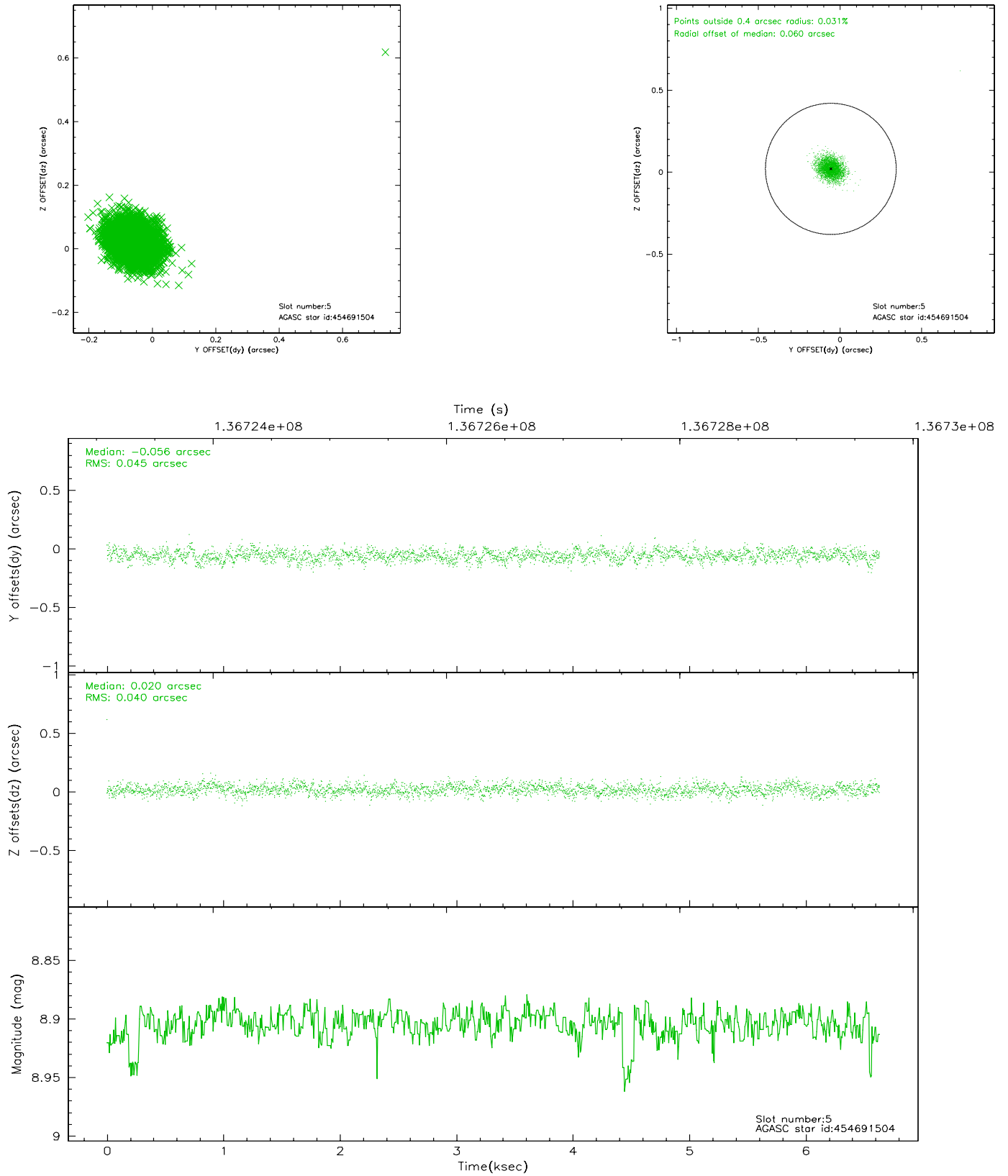
2.4.1 Slot 3



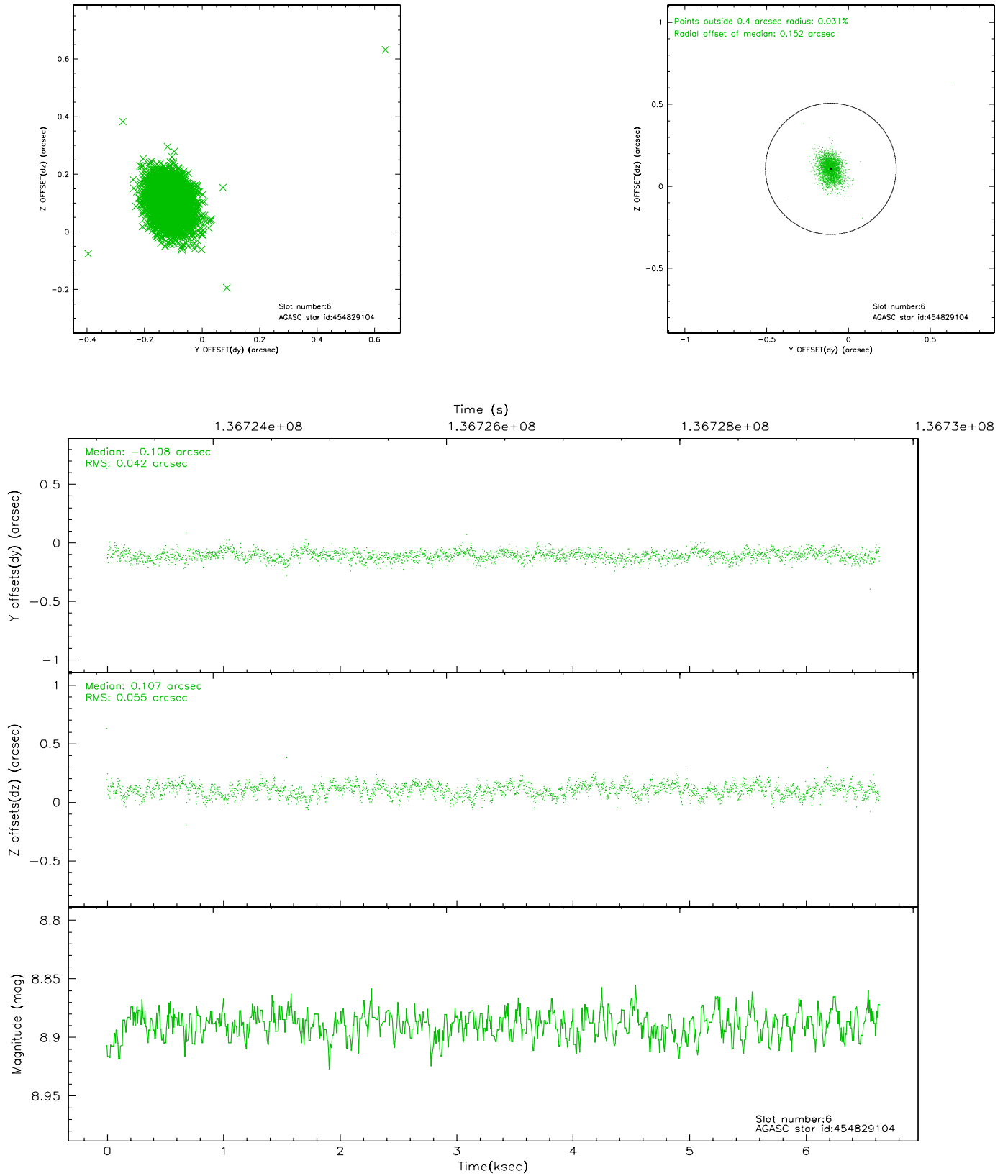
2.4.2 Slot 4



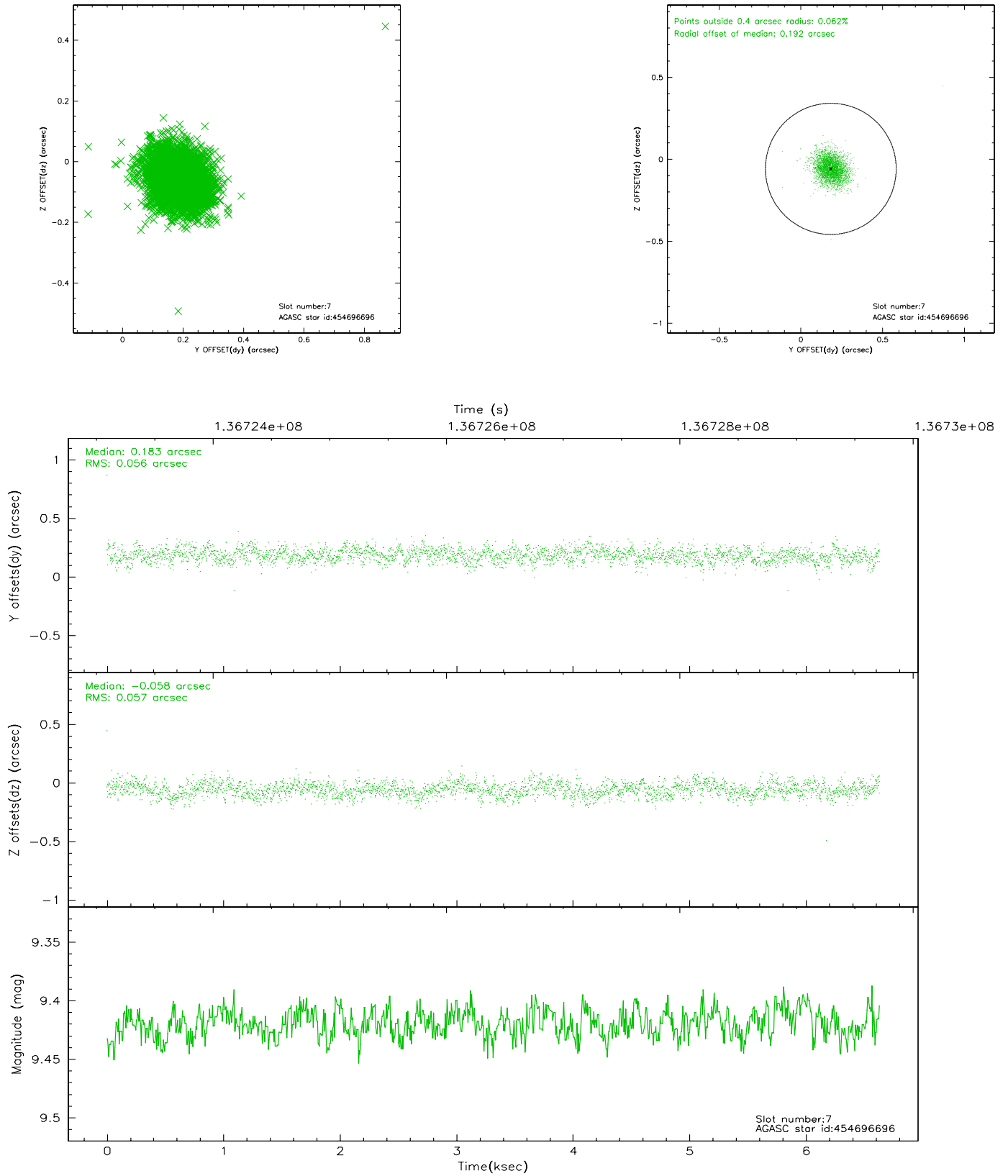
2.4.3 Slot 5



2.4.4 Slot 6

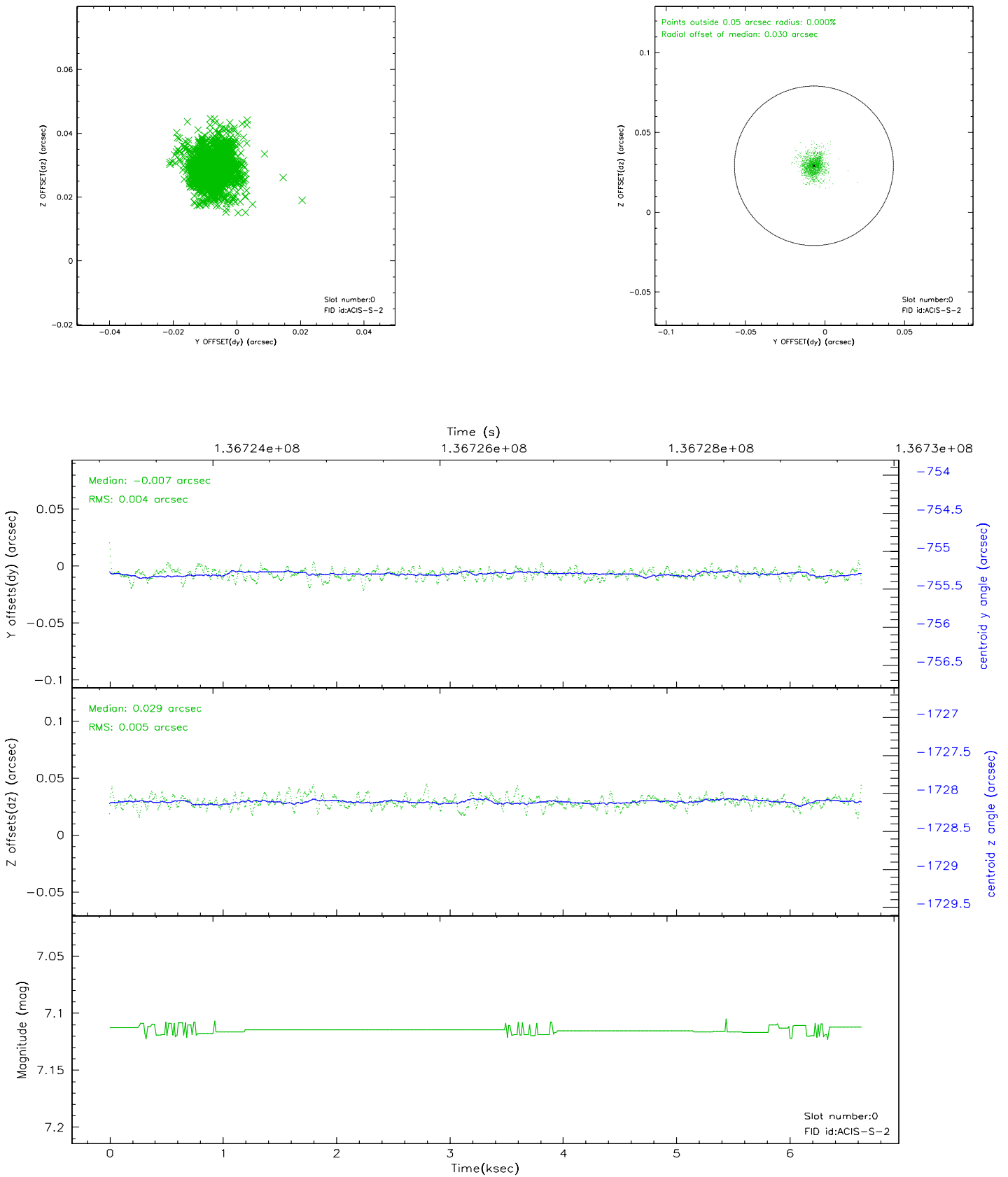


2.4.5 Slot 7

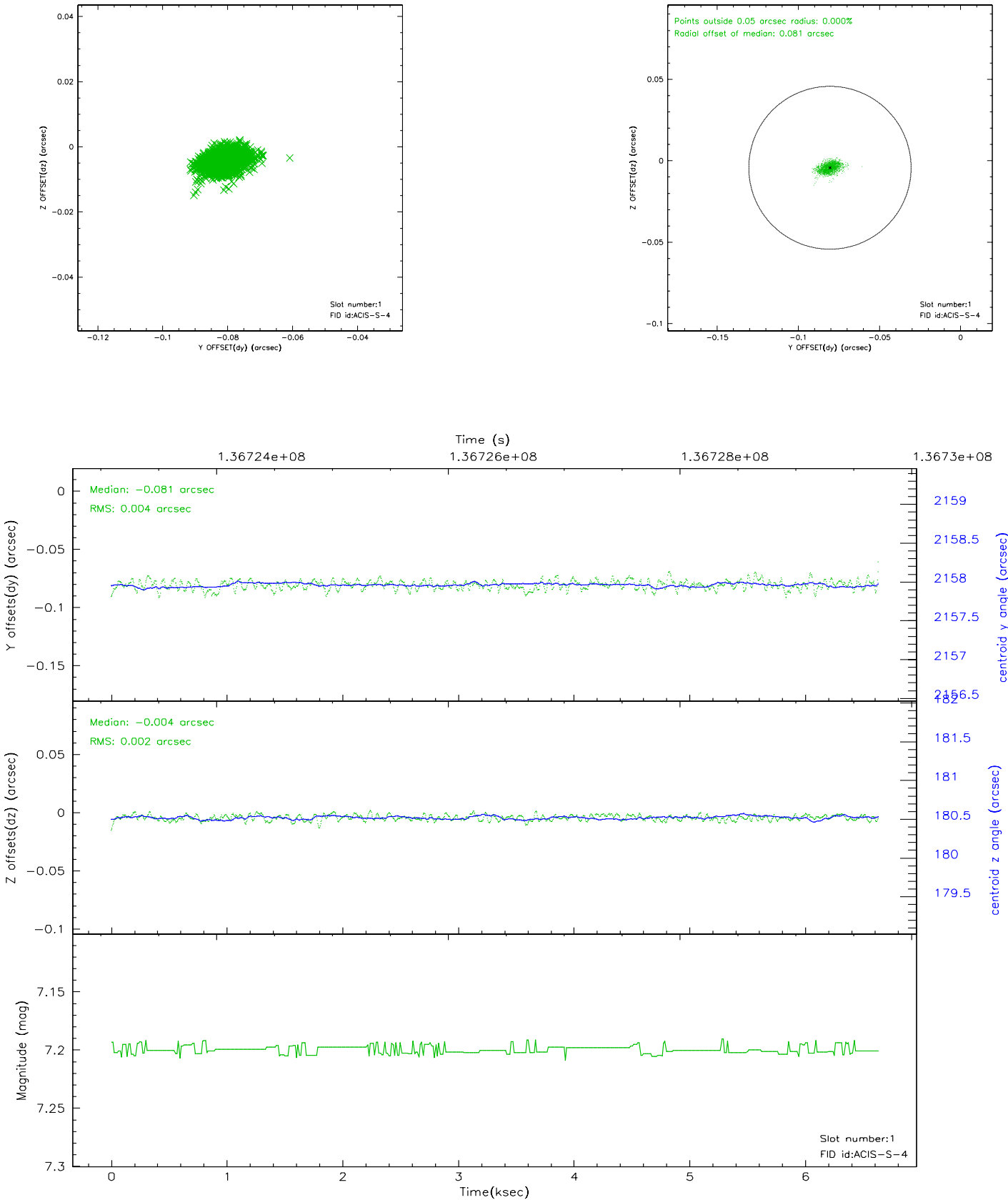


2.5 FID Slots

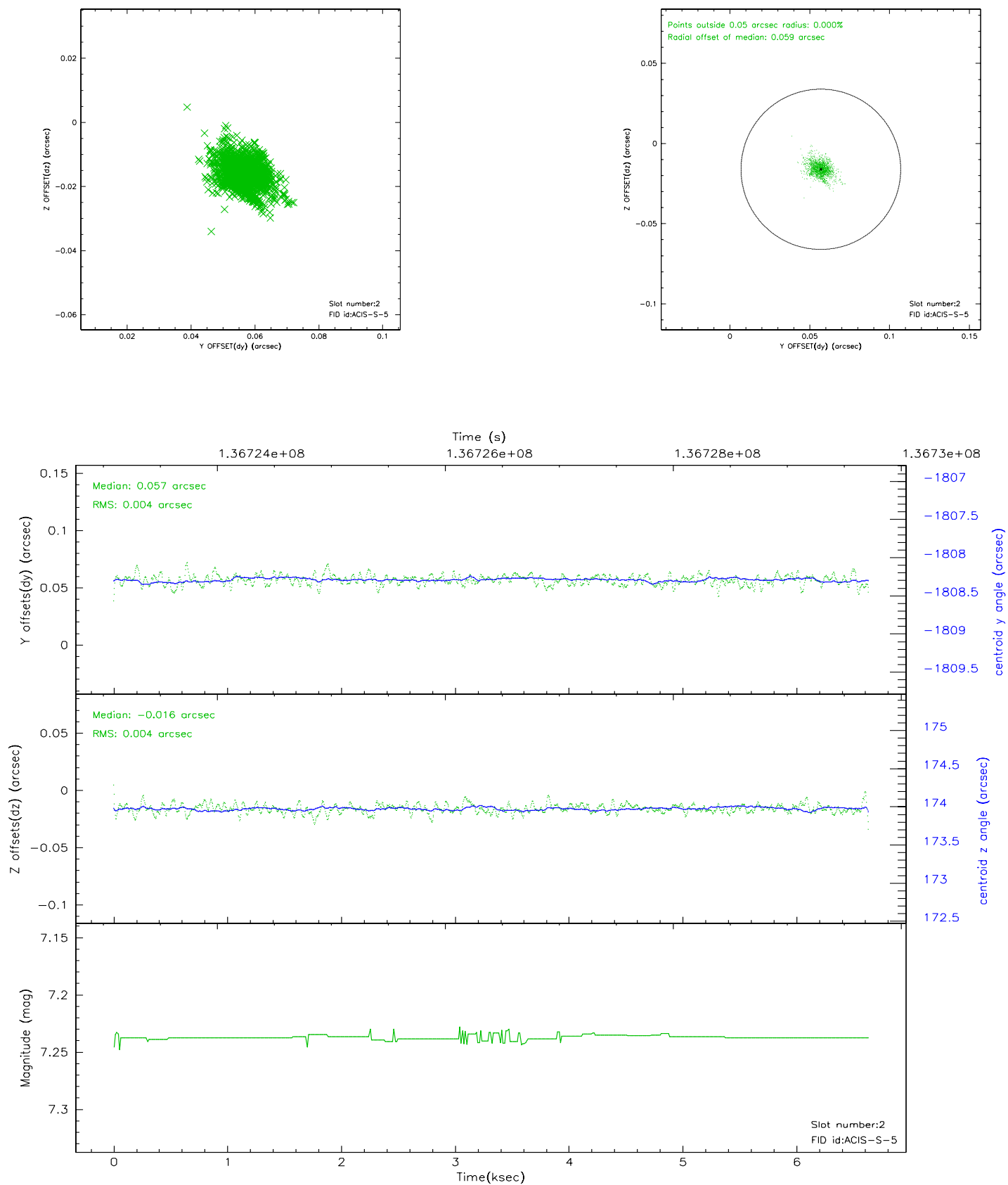
2.5.1 Slot 0



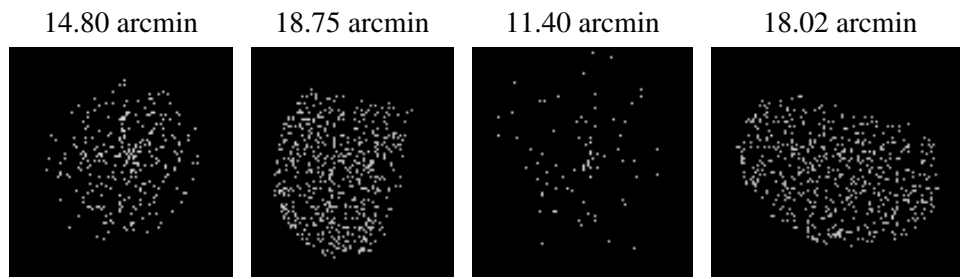
2.5.2 Slot 1



2.5.3 Slot 2



3 Point Sources



A Summary

A.1 Status

V&V Scientist	Doug Morgan
V&V Date (YYYY-MM-DD)	2006.09.15
V&V Edition	1
V&V Disposition and Status	OK
V&V Charge Time	5.961

A.2 Comments