

# V&V Reference Report

## L2 ASCDS Version : 7.6.8.1

Observation 3156 - L2 Version 001  
Chandra X-Ray Center

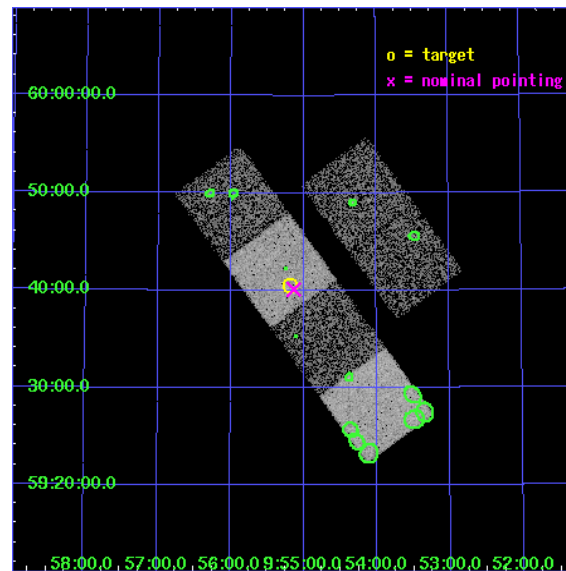
L2 Processing Date : Sep 11 2006

## Contents

<b>1</b>	<b>Front</b>	<b>2</b>
<b>2</b>	<b>OBI</b>	<b>3</b>
2.1	OBI . . . . .	3
2.1.1	Images . . . . .	3
2.1.2	Bias . . . . .	3
2.1.3	Parameters . . . . .	4
2.1.4	Events . . . . .	4
2.2	Compared Parameters . . . . .	5
2.3	Aspect . . . . .	6
2.4	Star Slots . . . . .	9
2.4.1	Slot 3 . . . . .	9
2.4.2	Slot 4 . . . . .	10
2.4.3	Slot 5 . . . . .	11
2.4.4	Slot 6 . . . . .	12
2.4.5	Slot 7 . . . . .	13
2.5	FID Slots . . . . .	14
2.5.1	Slot 0 . . . . .	14
2.5.2	Slot 1 . . . . .	15
2.5.3	Slot 2 . . . . .	16
<b>3</b>	<b>Point Sources</b>	<b>17</b>
<b>A</b>	<b>Summary</b>	<b>18</b>
A.1	Status . . . . .	18
A.2	Comments . . . . .	18

# 1 Front

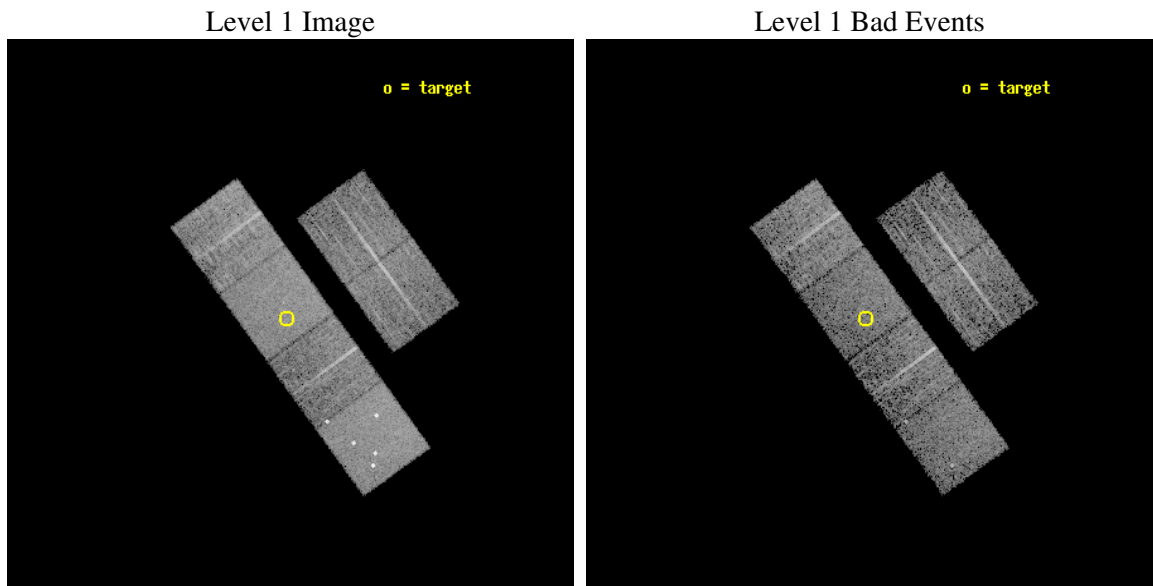
seq_num	700595
obs_id	3156
title	A CHANDRA SURVEY OF THE MOST LUMINOUS QUASARS AT $Z > 4$
observer	Professor Gordon Garmire
object	PSS0955+5940
dtcycle	0
cycle	P
ra_targ	148.797083
dec_targ	59.675556
ra_nom	148.78323179444
dec_nom	59.668761901747
roll_nom	233.92121257091
revision	3
ontime	5753.5999785662
livetime	5680.7444312356
ontime2	5753.5999785662
ontime3	5753.5999785662
ontime5	5753.5999785662
ontime6	5753.5999785662
ontime7	5753.5999785662
ontime8	5750.359018296
l2events	54391



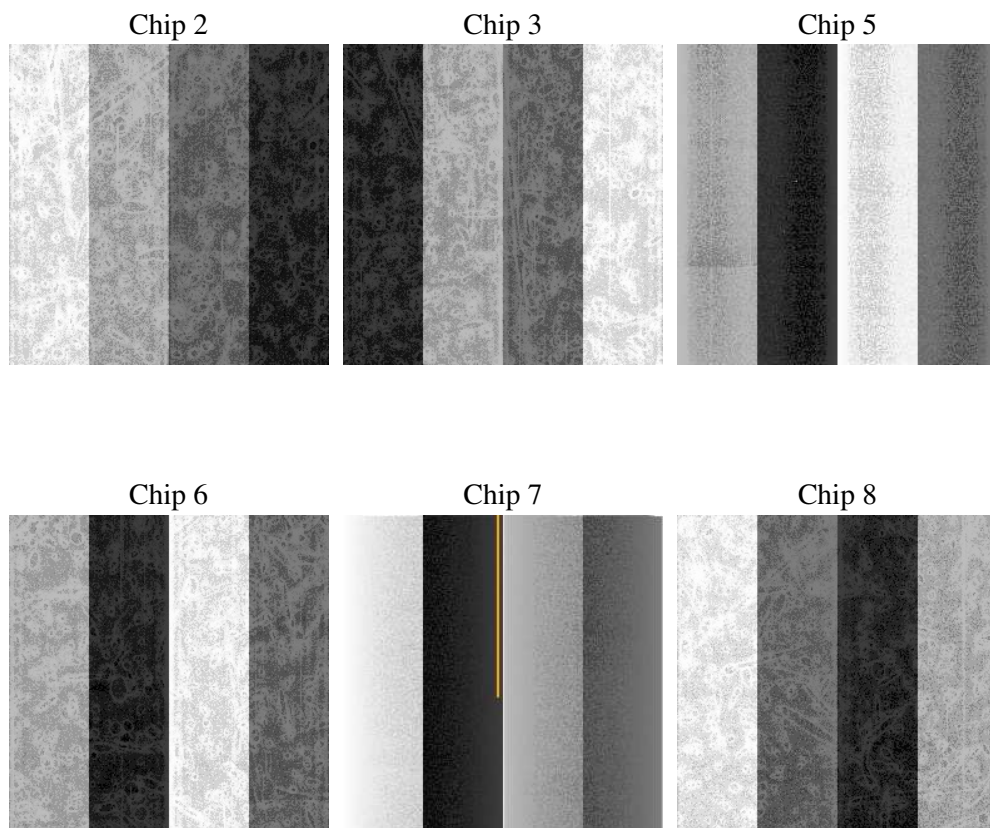
## 2 OBI

### 2.1 OBI

#### 2.1.1 Images



#### 2.1.2 Bias



### 2.1.3 Parameters

obi_num	2
ascdsver	7.6.8.1
caldbver	3.2.3
date	2006-09-11T06:12:03
revision	3

sched_exp_time	6000.000000
ontime	5759.2577638626
ontime2	5759.2577439547
ontime3	5759.2577439547
ontime5	5759.2577638626
ontime6	5759.2577439547
ontime7	5759.2577638626
ontime8	5756.016654104
l1events	261634

### 2.1.4 Events

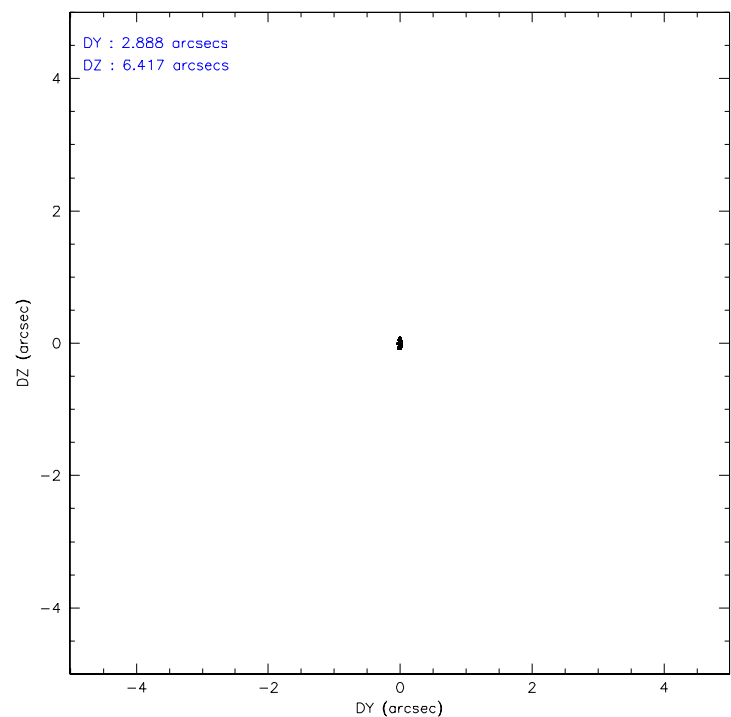
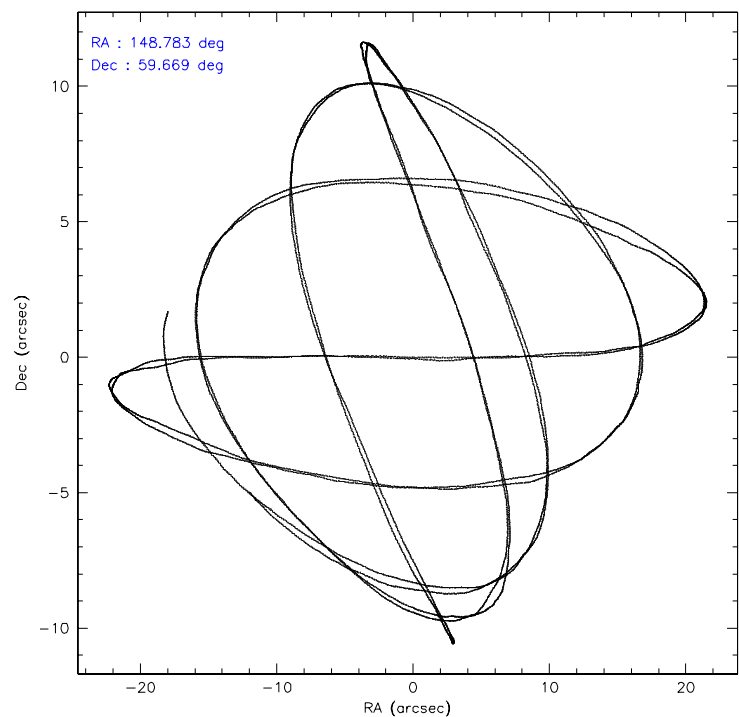
	ccd 2	ccd 3	ccd 5	ccd 6	ccd 7	ccd 8
level 1 events	36242	35740	56481	36282	47873	49016
rejected events	32005	31574	29895	31951	29789	39885
rejected %	88%	88%	52%	88%	62%	81%

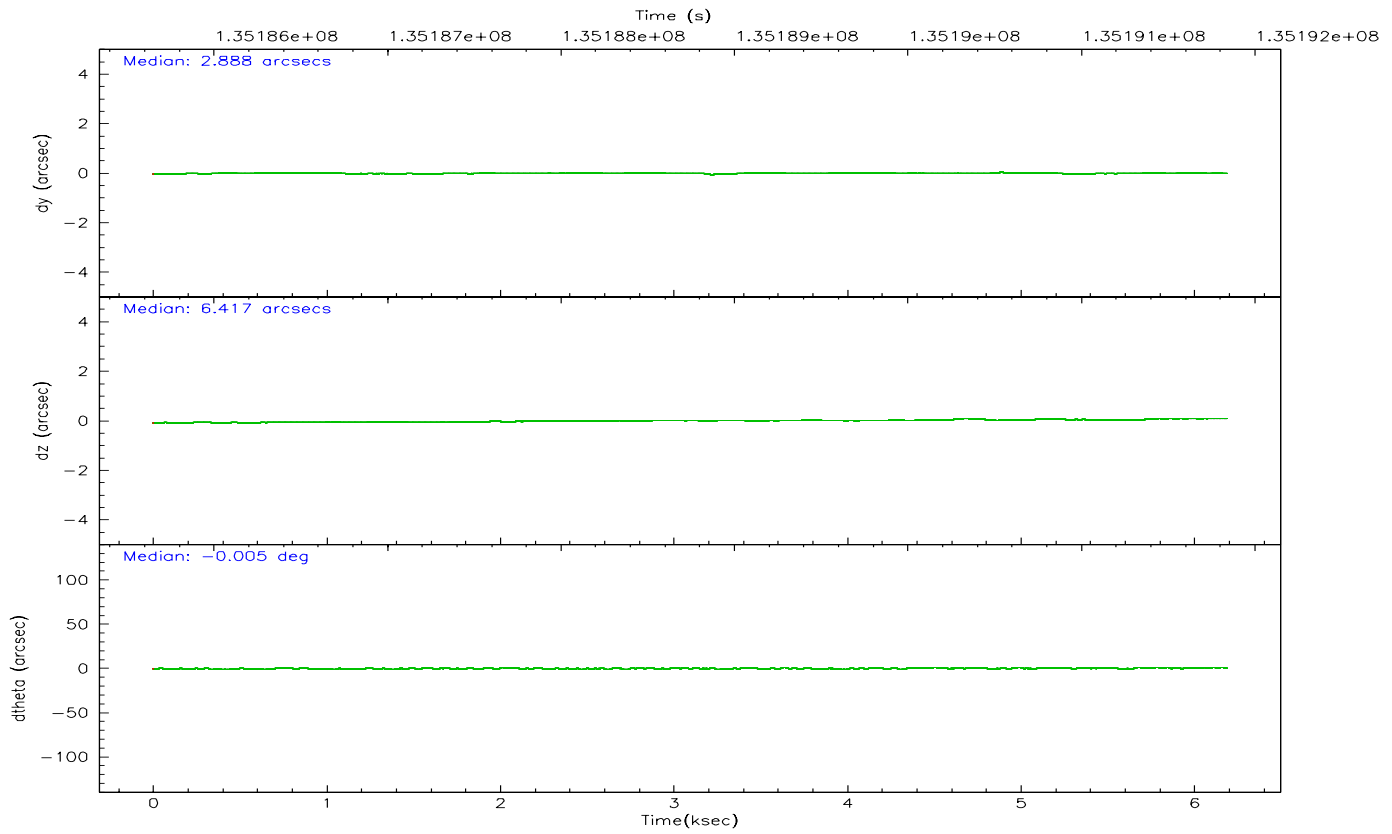
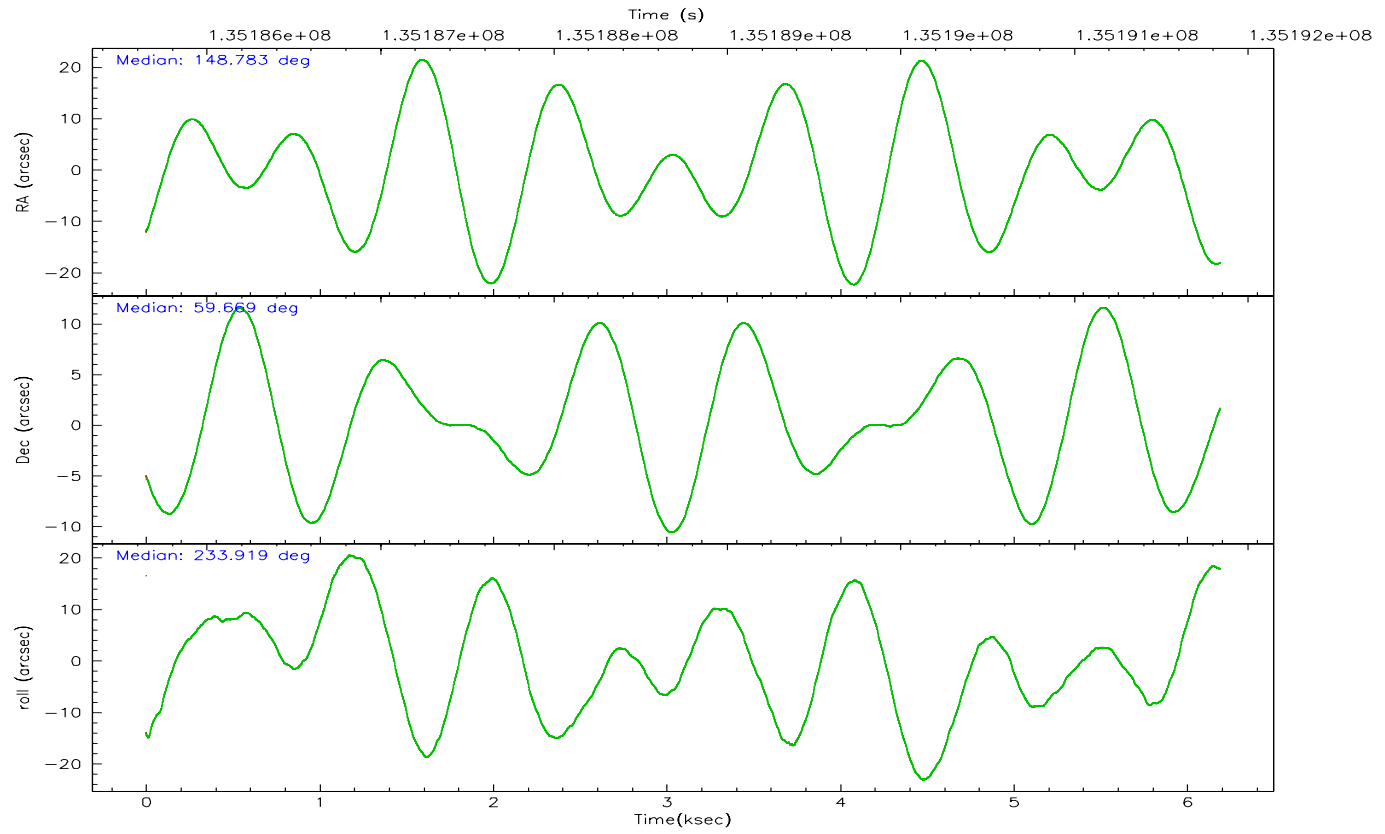
	ccd 2	ccd 3	ccd 5	ccd 6	ccd 7	ccd 8
grade 0 events	1801	1752	4605	1798	1121	2890
	4%	4%	8%	4%	2%	5%
grade 1 events	18	14	322	14	26	23
	0%	0%	0%	0%	0%	0%
grade 2 events	854	891	7582	880	4452	1958
	2%	2%	13%	2%	9%	3%
grade 3 events	408	380	547	426	864	951
	1%	1%	0%	1%	1%	1%
grade 4 events	418	404	504	400	837	907
	1%	1%	0%	1%	1%	1%
grade 5 events	1330	1506	2642	1630	3099	1995
	3%	4%	4%	4%	6%	4%
grade 6 events	763	745	13381	831	10833	2432
	2%	2%	23%	2%	22%	4%
grade 7 events	30650	30048	26898	30303	26641	37860
	84%	84%	47%	83%	55%	77%

## 2.2 Compared Parameters

Parameter	Planned	Actual	Parameter	Planned	Actual
Instrument	ACIS	ACIS	Obspar format version number	6	6
Detector	ACIS-235678	ACIS-235678	Obspar file type	PREDICTED	ACTUAL
Grating	NONE	NONE	Obspar update status	NONE	UPDATED
Data mode	FAINT	FAINT	On-chip summing requested	N	N
Observation mode	POINTING	POINTING	Subarray requested	NONE	NONE
Pointing RA	148.788247	148.7832317944395	Alternating exposures requested	N	N
Pointing Dec	59.695967	59.66876190174683	Primary exposure time	0.000000	3.2
Pointing Roll	233.760282	233.9212125709112			
SIM focus pos (mm)	-0.684267	-0.6828225247311905			
SIM defocus (mm)	0	0.001444936568705701			
SIM translation stage pos (mm)	-190.132523	-190.1425803651734			
SIM translation stage offset (mm)	0	0.01005778216563158			
Observation start time	135185836.184000	135185460.09863			
Observation start date	2002-04-14T15:36:12	2002-04-14T15:31:00			
Observation end time	135191836.184000	135192442.91141			
Observation end date	2002-04-14T17:16:12	2002-04-14T17:27:22			
Read mode	TIMED	TIMED			

2.3 Aspect





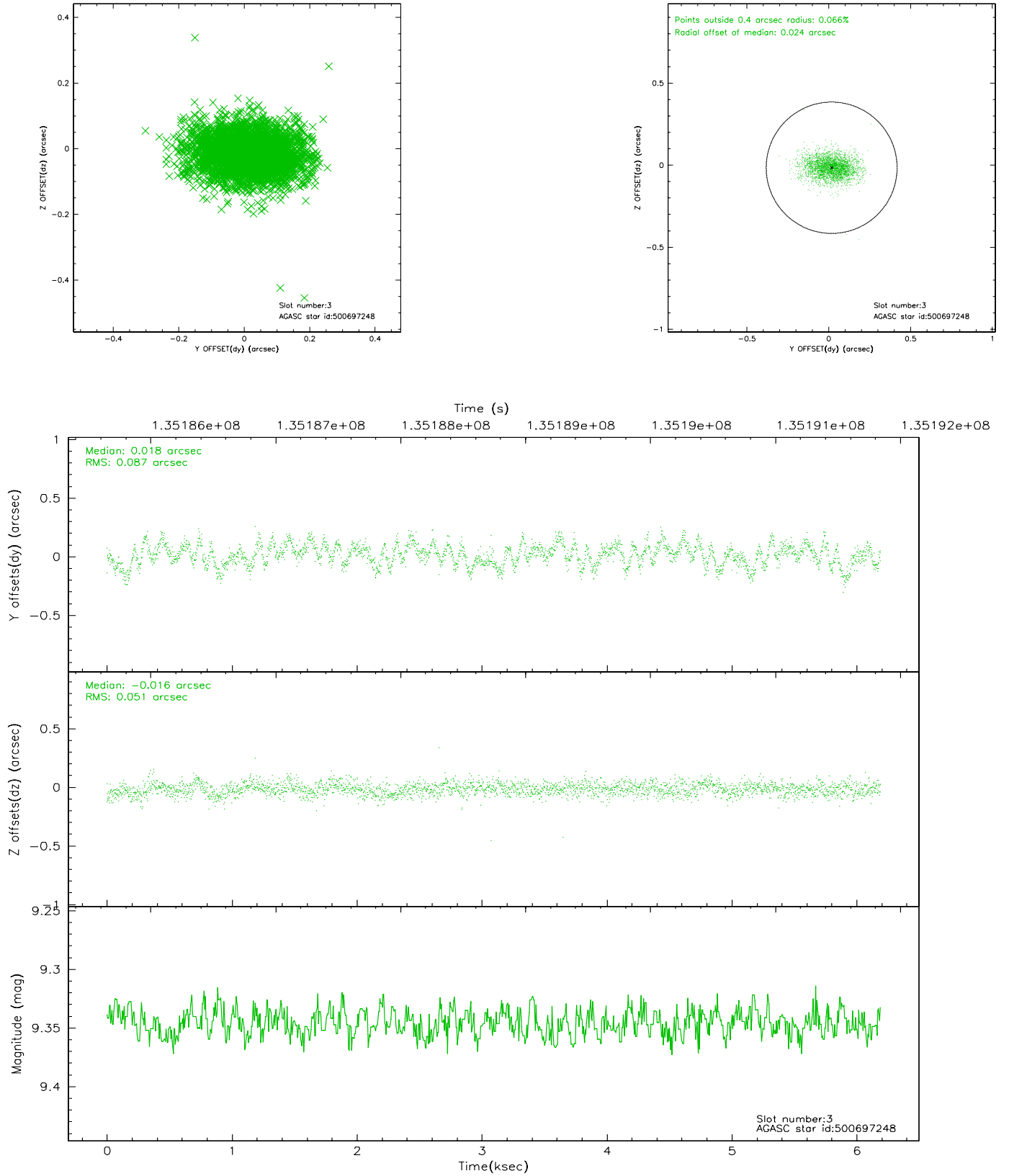
### Slot Statistics

slot	status	id	mag	n_pts	med_dy	med_dz	dr1	dr2	ra	dec	mean_y	mean_z
0	FID	ACIS-S-2	7.11	1511	-0.015	0.037	0.006	0.011	0.000000	0.000000	-755.51	-1727.49
1	FID	ACIS-S-4	7.20	1511	-0.064	-0.002	0.005	0.008	0.000000	0.000000	2157.26	180.02
2	FID	ACIS-S-5	7.24	1509	0.048	-0.025	0.006	0.010	0.000000	0.000000	-1807.09	174.68
3	GUIDE	500697248	9.35	3021	0.018	-0.016	0.104	0.182	150.205215	59.660702	-1442.80	2136.40
4	GUIDE	542258424	9.59	3020	-0.014	-0.051	0.130	0.210	149.739161	60.081559	-2139.17	549.48
5	GUIDE	500704856	7.90	3021	-0.064	0.007	0.084	0.135	149.095120	59.439271	411.61	998.38
6	GUIDE	542257792	9.91	3019	-0.075	0.078	0.204	0.319	149.079954	60.276436	-1993.93	-816.15
7	GUIDE	500706352	10.15	3014	0.137	-0.007	0.240	0.375	147.758279	59.361242	2076.83	-820.98

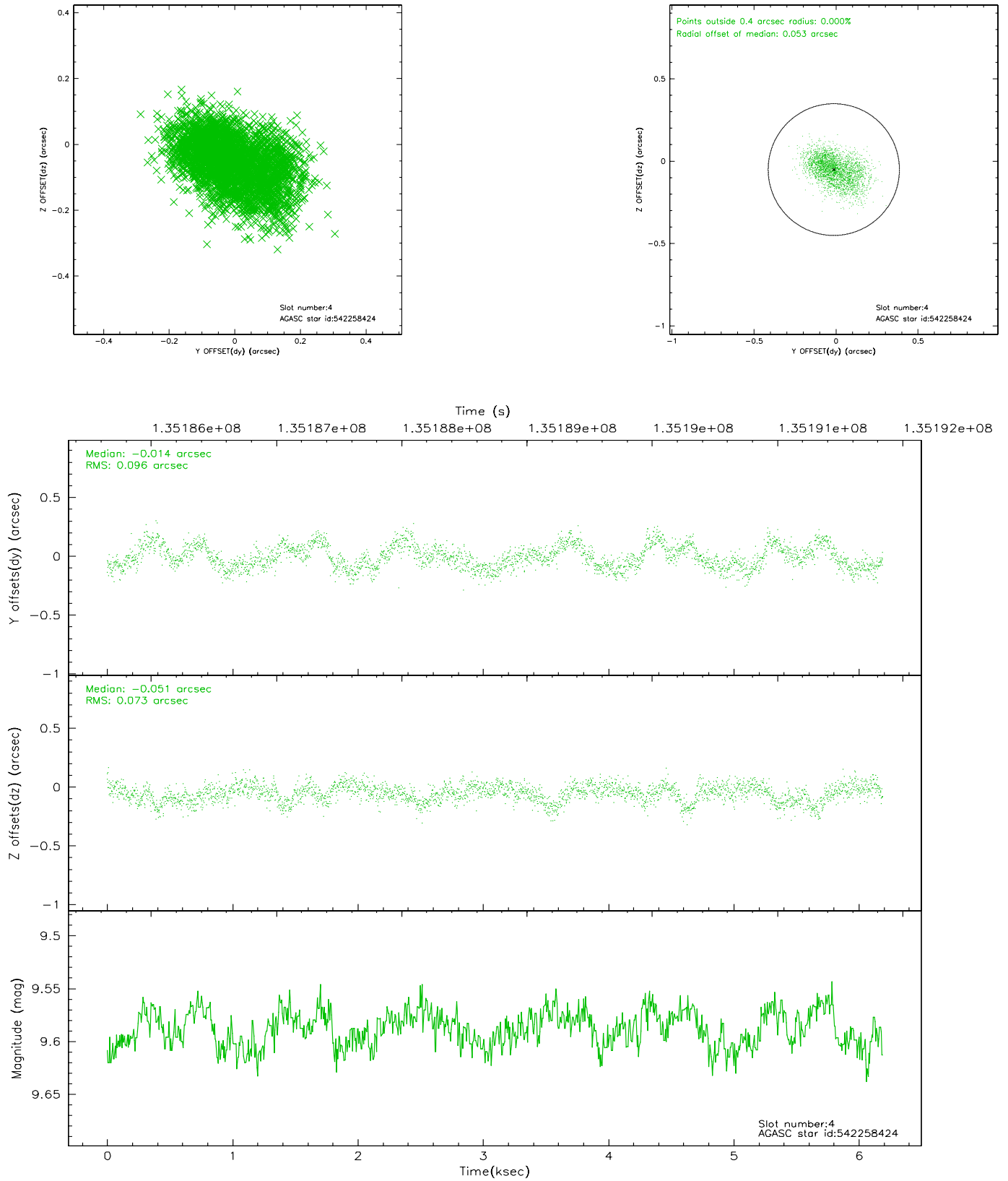


## 2.4 Star Slots

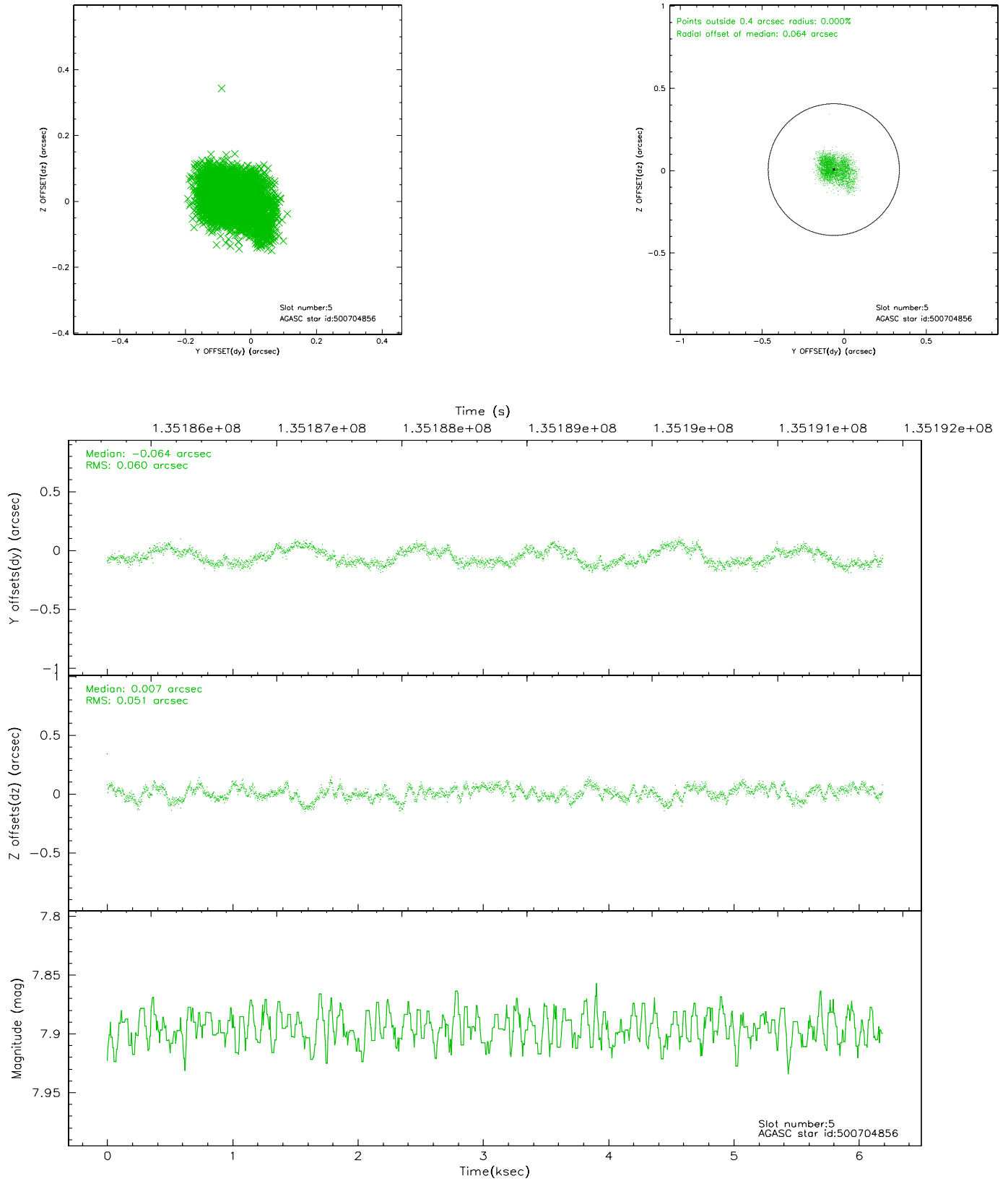
### 2.4.1 Slot 3



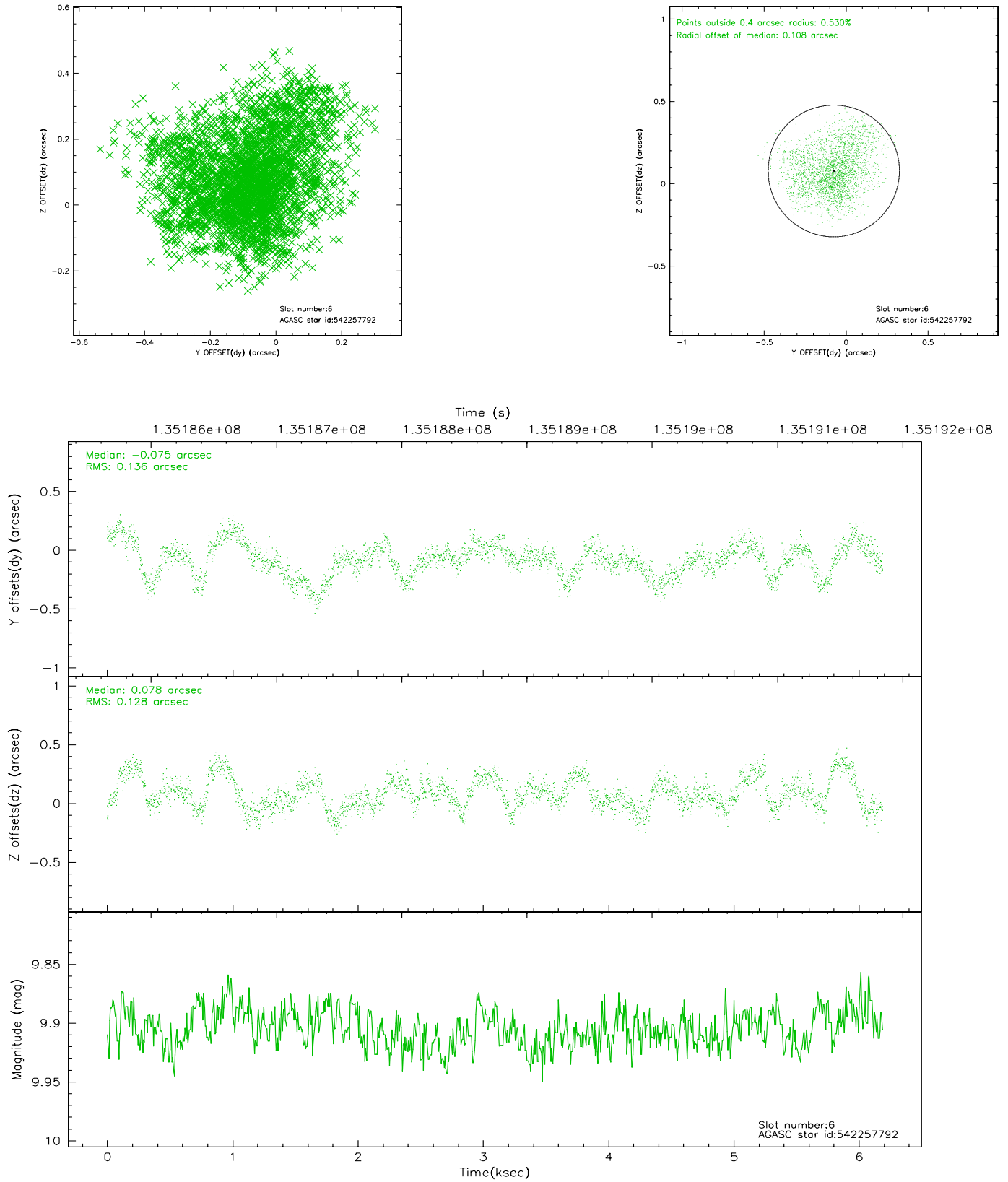
## 2.4.2 Slot 4



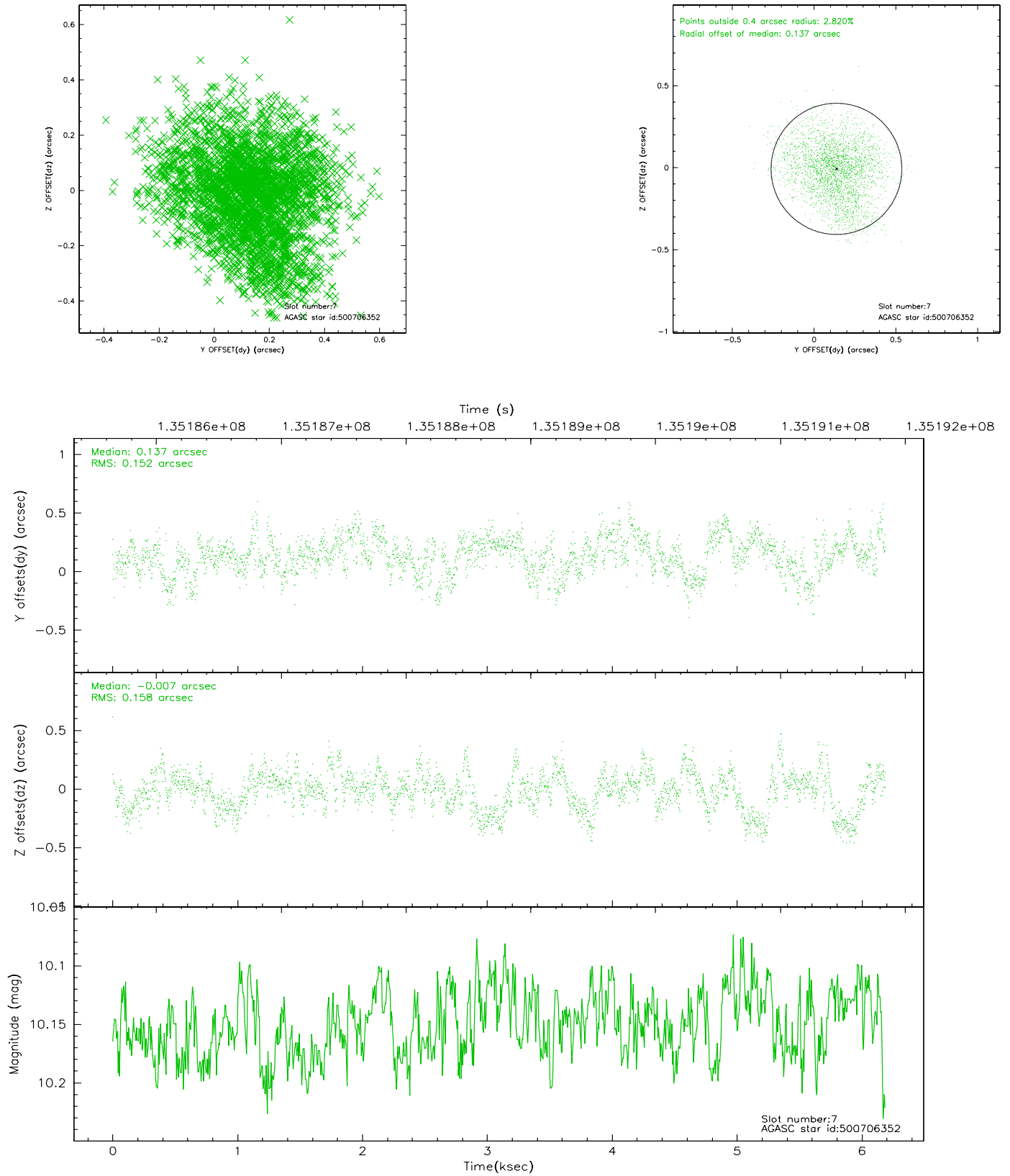
### 2.4.3 Slot 5



## 2.4.4 Slot 6

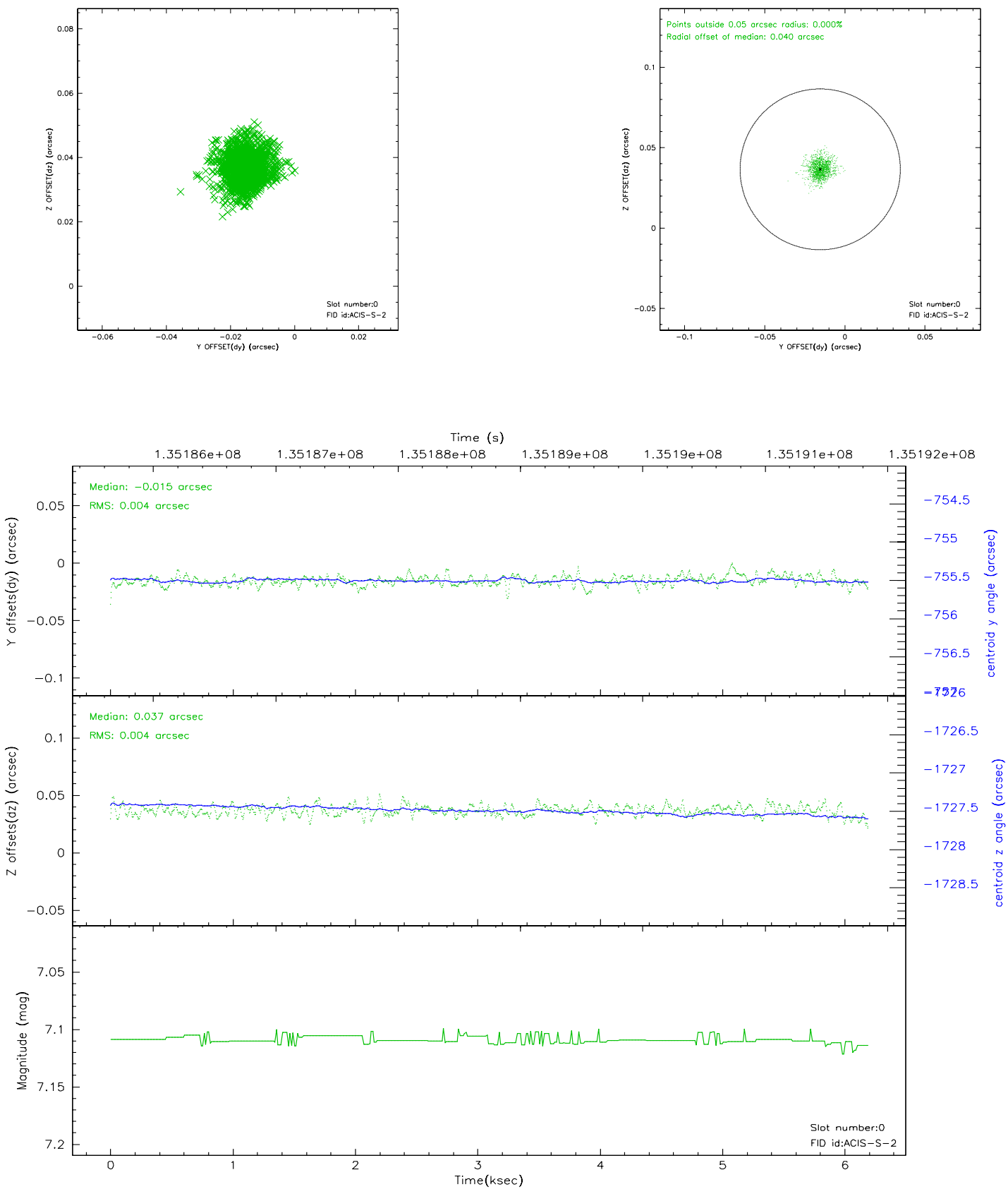


## 2.4.5 Slot 7

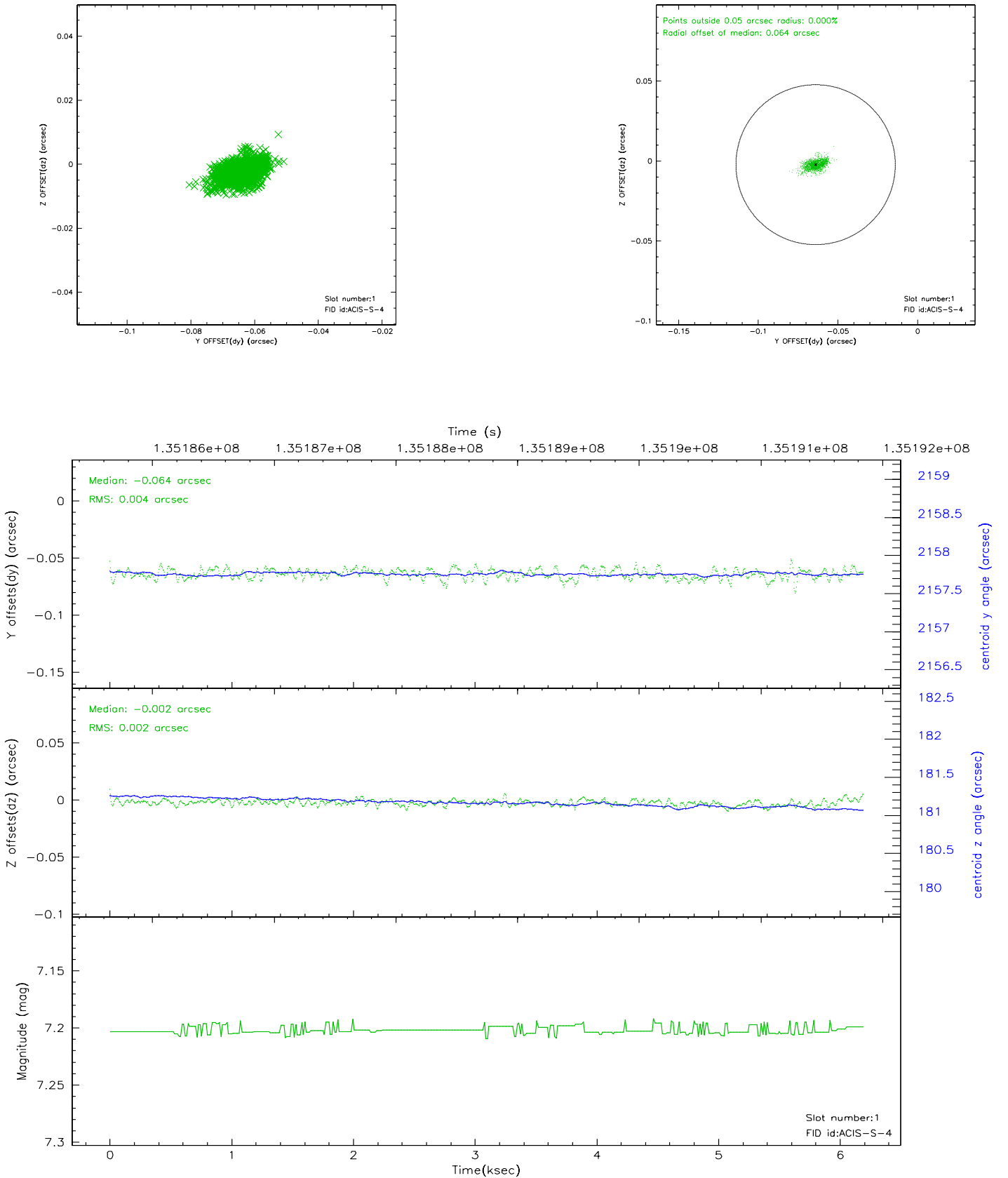


## 2.5 FID Slots

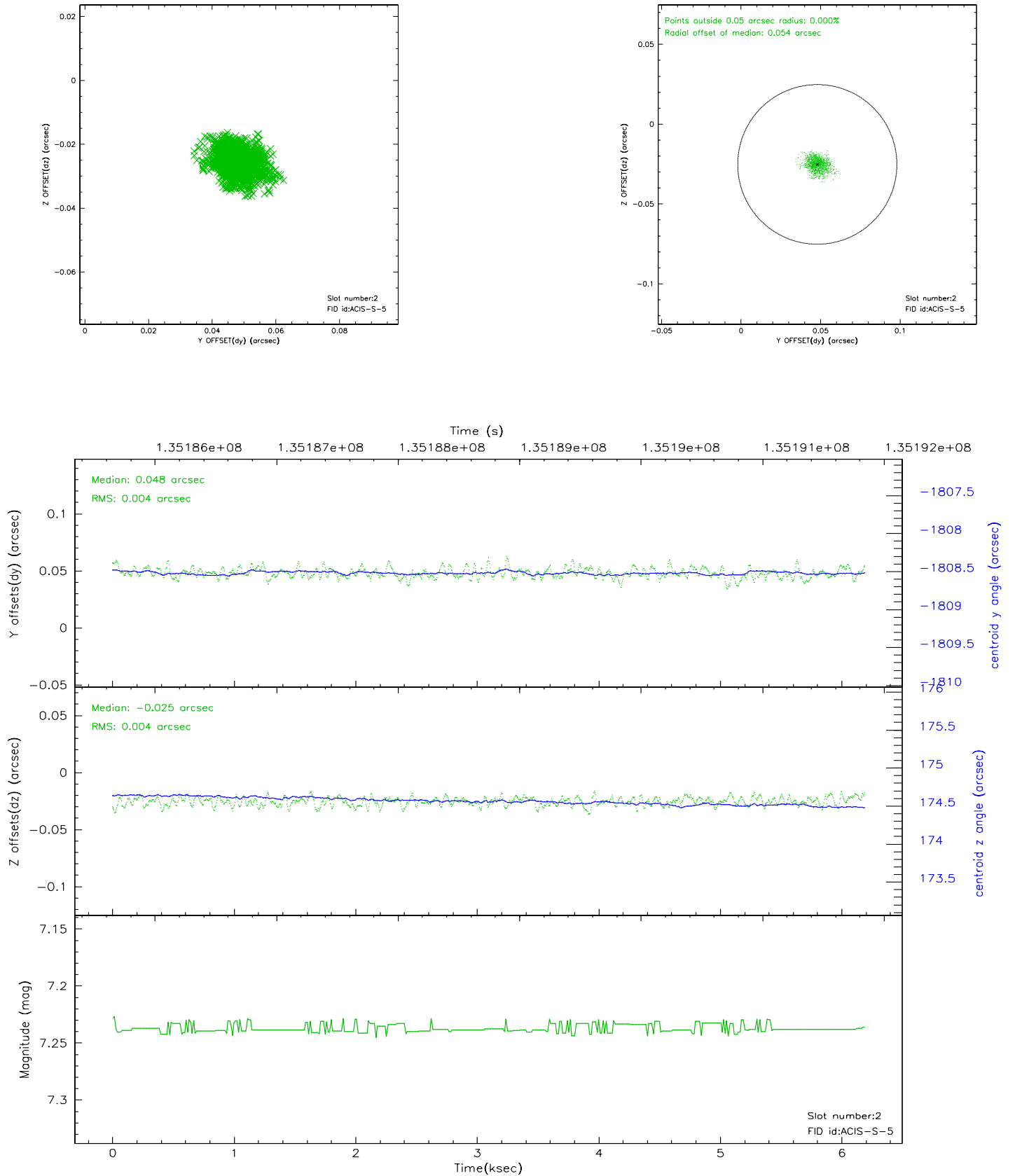
### 2.5.1 Slot 0



## 2.5.2 Slot 1

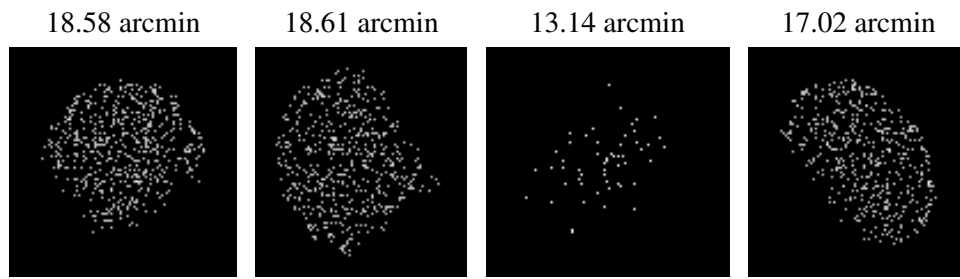


### 2.5.3 Slot 2





### 3 Point Sources



## A Summary

### A.1 Status

V&V Scientist	Joy Nichols
V&V Date (YYYY-MM-DD)	2006.09.11
V&V Edition	1
V&V Disposition and Status	OK
V&V Charge Time	5.756

### A.2 Comments

Coordinated with ground observations at Hobby-Eberly.