

V&V Reference Report

L2 ASCDS Version : 7.6.9

Observation 3154 - L2 Version 001
Chandra X-Ray Center

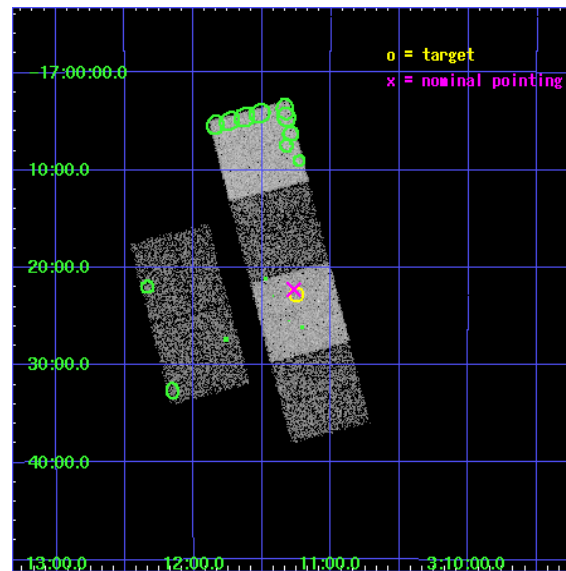
L2 Processing Date : Oct 4 2006

Contents

1	Front	2
2	OBI	3
2.1	OBI	3
2.1.1	Images	3
2.1.2	Bias	3
2.1.3	Parameters	4
2.1.4	Events	4
2.2	Compared Parameters	5
2.3	Aspect	6
2.4	Star Slots	9
2.4.1	Slot 3	9
2.4.2	Slot 4	10
2.4.3	Slot 5	11
2.4.4	Slot 6	12
2.5	FID Slots	13
2.5.1	Slot 0	13
2.5.2	Slot 1	14
2.5.3	Slot 2	15
3	Point Sources	16
A	Summary	17
A.1	Status	17
A.2	Comments	17

1 Front

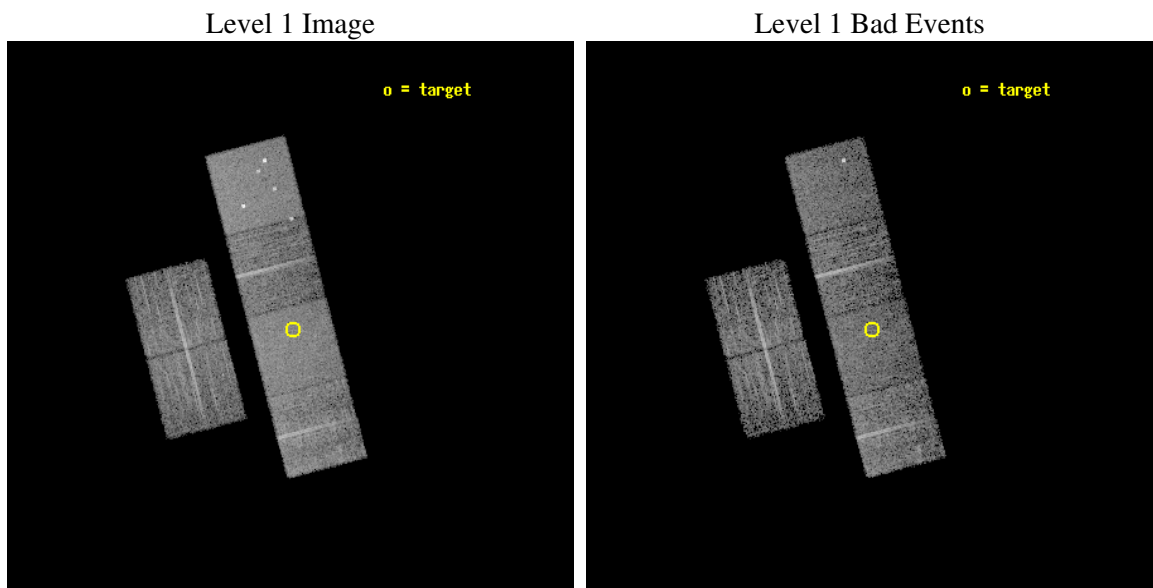
seq_num	700593
obs_id	3154
title	A CHANDRA SURVEY OF THE MOST LUMINOUS QUASARS AT $Z > 4$
observer	Professor Gordon Garmire
object	BR0308-1734
dtcycle	0
cycle	P
ra_targ	47.813333
dec_targ	-17.379833
ra_nom	47.81749461059
dec_nom	-17.371078225524
roll_nom	75.431069440031
revision	2
ontime	6137.5999771357
livetime	6059.8819906061
ontime2	6137.5999771357
ontime3	6137.5999771357
ontime5	6137.5999771357
ontime6	6137.5999771357
ontime7	6137.5999771357
ontime8	6137.5999771357
l2events	56848



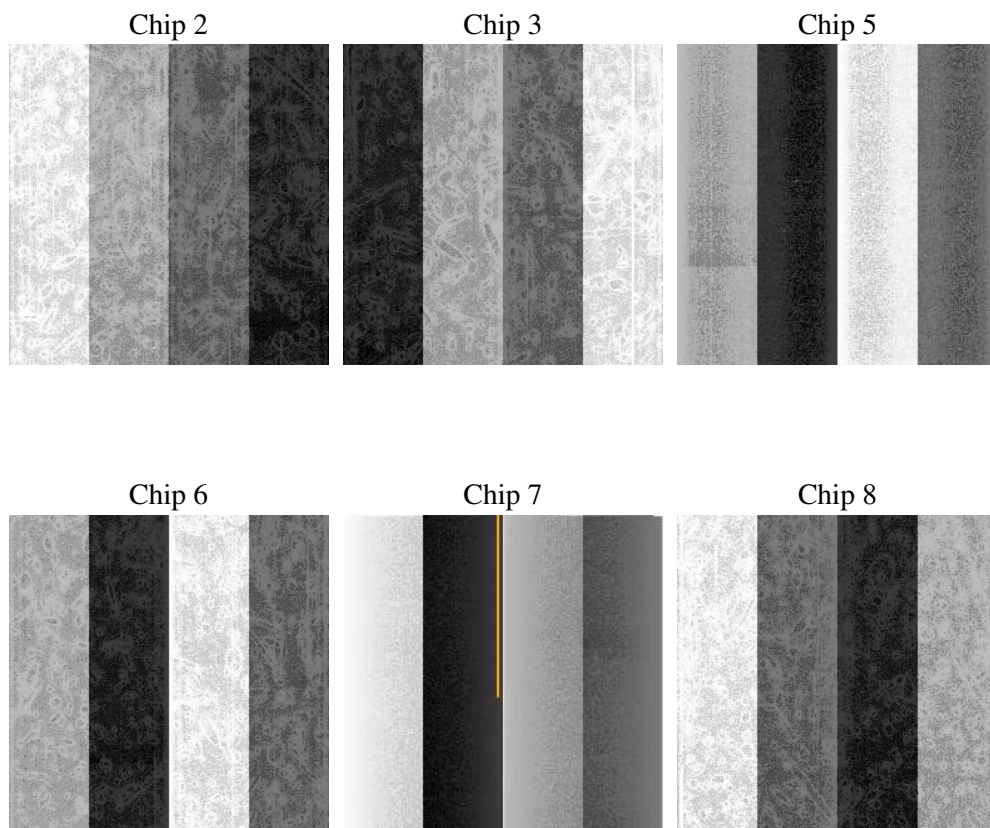
2 OBI

2.1 OBI

2.1.1 Images



2.1.2 Bias



2.1.3 Parameters

obi_num	0
ascdsver	7.6.9
caldsver	3.2.3
date	2006-10-04T15:01:31
revision	2

sched_exp_time	6000.000000
ontime	7797.8501028121
ontime2	7797.8501028121
ontime3	7801.0910929739
ontime5	7797.8501028121
ontime6	7797.8500829041
ontime7	7797.8501028121
ontime8	7801.0910929739
l1events	343798

2.1.4 Events

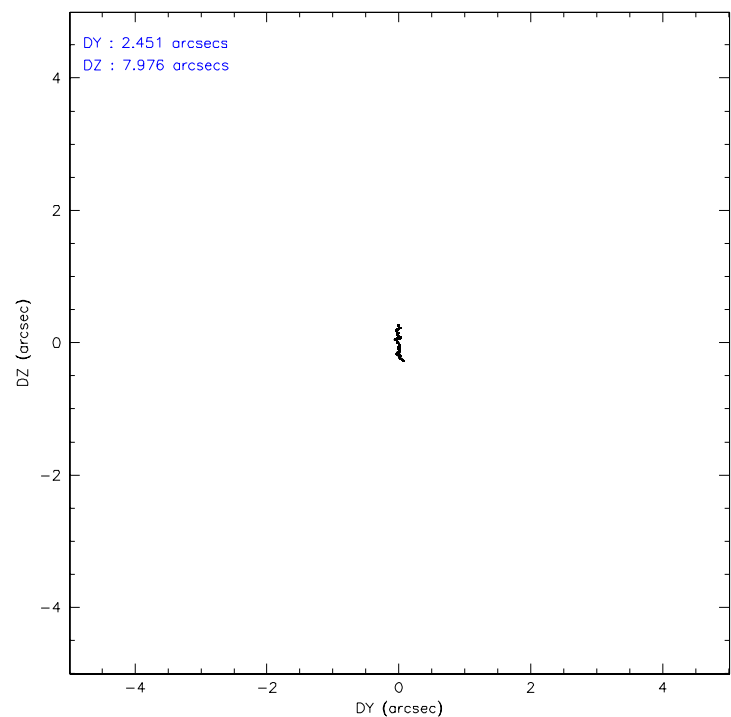
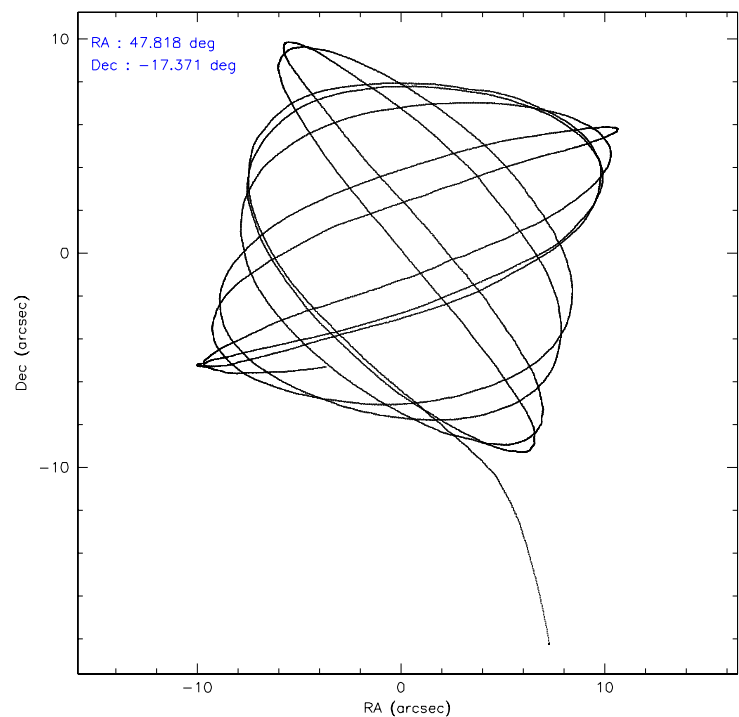
	ccd 2	ccd 3	ccd 5	ccd 6	ccd 7	ccd 8
level 1 events	49182	46054	74110	47995	63651	62806
rejected events	44977	41736	47599	43535	44647	52707
rejected %	91%	90%	64%	90%	70%	83%

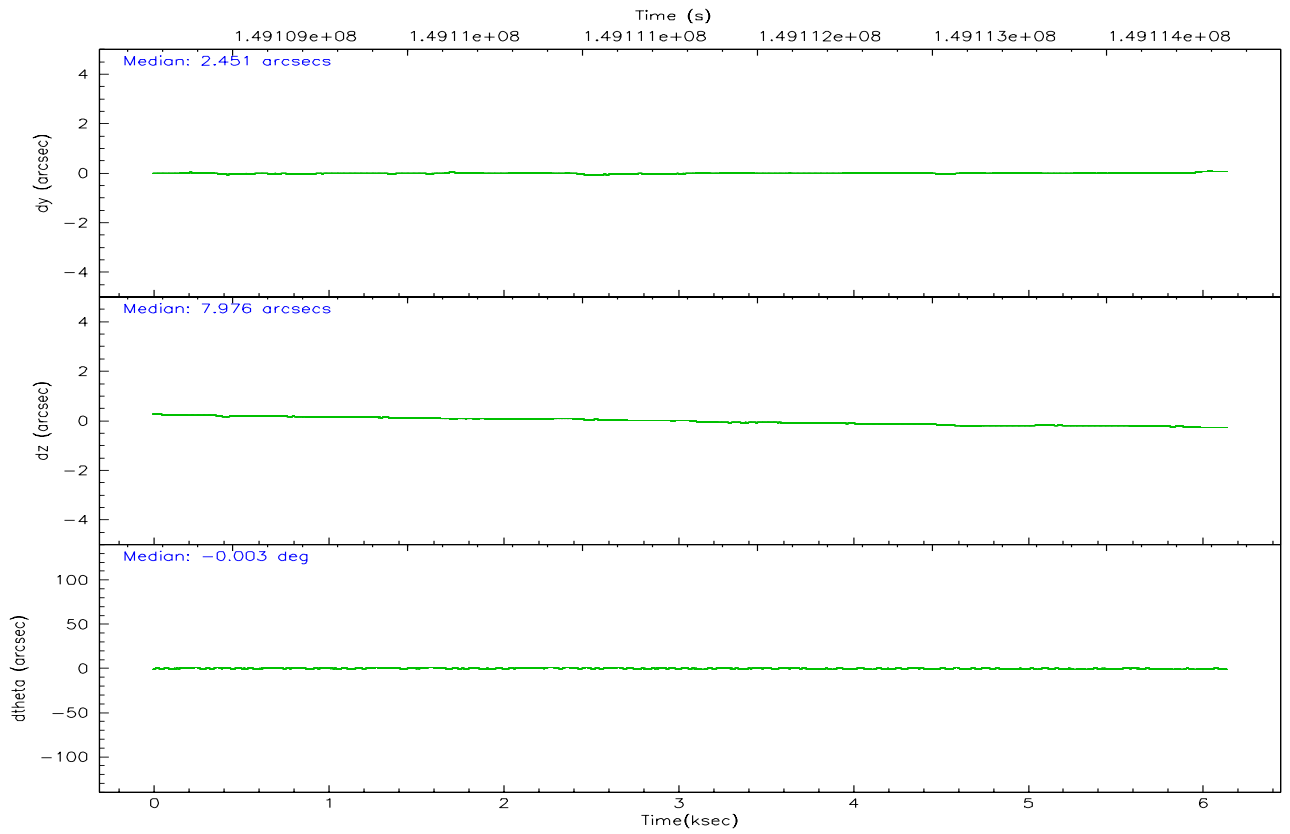
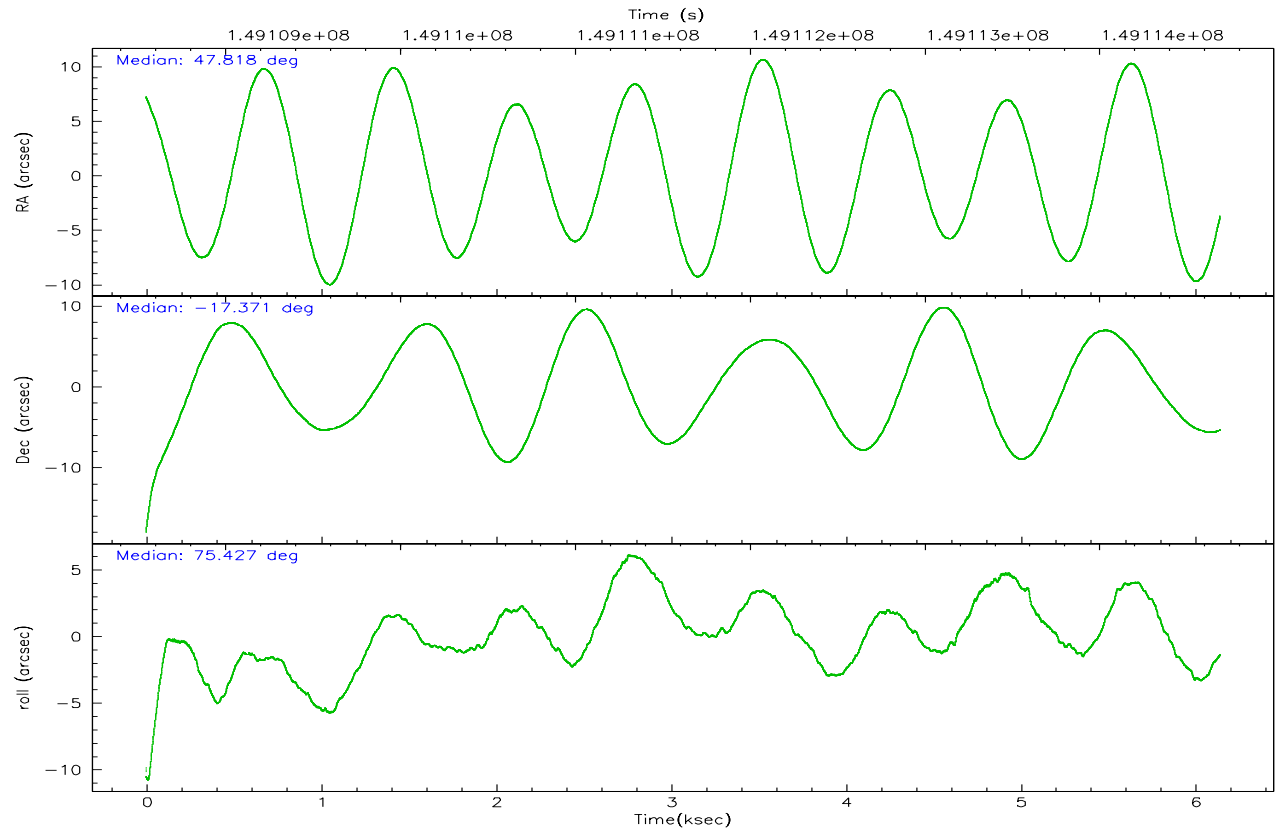
	ccd 2	ccd 3	ccd 5	ccd 6	ccd 7	ccd 8
grade 0 events	2393	2440	4964	2198	1472	4109
	4%	5%	6%	4%	2%	6%
grade 1 events	25	31	68	27	43	46
	0%	0%	0%	0%	0%	0%
grade 2 events	1042	1020	9862	1175	5807	2730
	2%	2%	13%	2%	9%	4%
grade 3 events	566	522	842	598	1297	1480
	1%	1%	1%	1%	2%	2%
grade 4 events	536	537	640	602	1257	1388
	1%	1%	0%	1%	1%	2%
grade 5 events	1907	1970	3824	2167	4287	2940
	3%	4%	5%	4%	6%	4%
grade 6 events	892	944	17608	1159	14450	3241
	1%	2%	23%	2%	22%	5%
grade 7 events	41821	38590	36302	40069	35038	46872
	85%	83%	48%	83%	55%	74%

2.2 Compared Parameters

Parameter	Planned	Actual	Parameter	Planned	Actual
Instrument	ACIS	ACIS	Obspar format version number	6	6
Detector	ACIS-235678	ACIS-235678	Obspar file type	PREDICTED	ACTUAL
Grating	NONE	NONE	Obspar update status	NONE	UPDATED
Data mode	FAINT	FAINT	Number of optional ACIS chips dropped	0	0
Observation mode	POINTING	POINTING	On-chip summing requested	N	N
Pointing RA	47.825523	47.81749461058952	Subarray requested	NONE	NONE
Pointing Dec	-17.397191	-17.37107822552409	Alternating exposures requested	N	N
Pointing Roll	75.276852	75.43106944003139	Primary exposure time	0.000000	3.2
SIM focus pos (mm)	-0.684267	-0.6828225247311905			
SIM defocus (mm)	0	0.001444936568705701			
SIM translation stage pos (mm)	-190.132523	-190.1400660498719			
SIM translation stage offset (mm)	0	0.00754346686406393			
Observation start time	149108682.184000	149106803.61958			
Observation start date	2002-09-22T19:03:38	2002-09-22T18:33:23			
Observation end time	149114682.184000	149115287.03243			
Observation end date	2002-09-22T20:43:38	2002-09-22T20:54:47			
Read mode	TIMED	TIMED			

2.3 Aspect



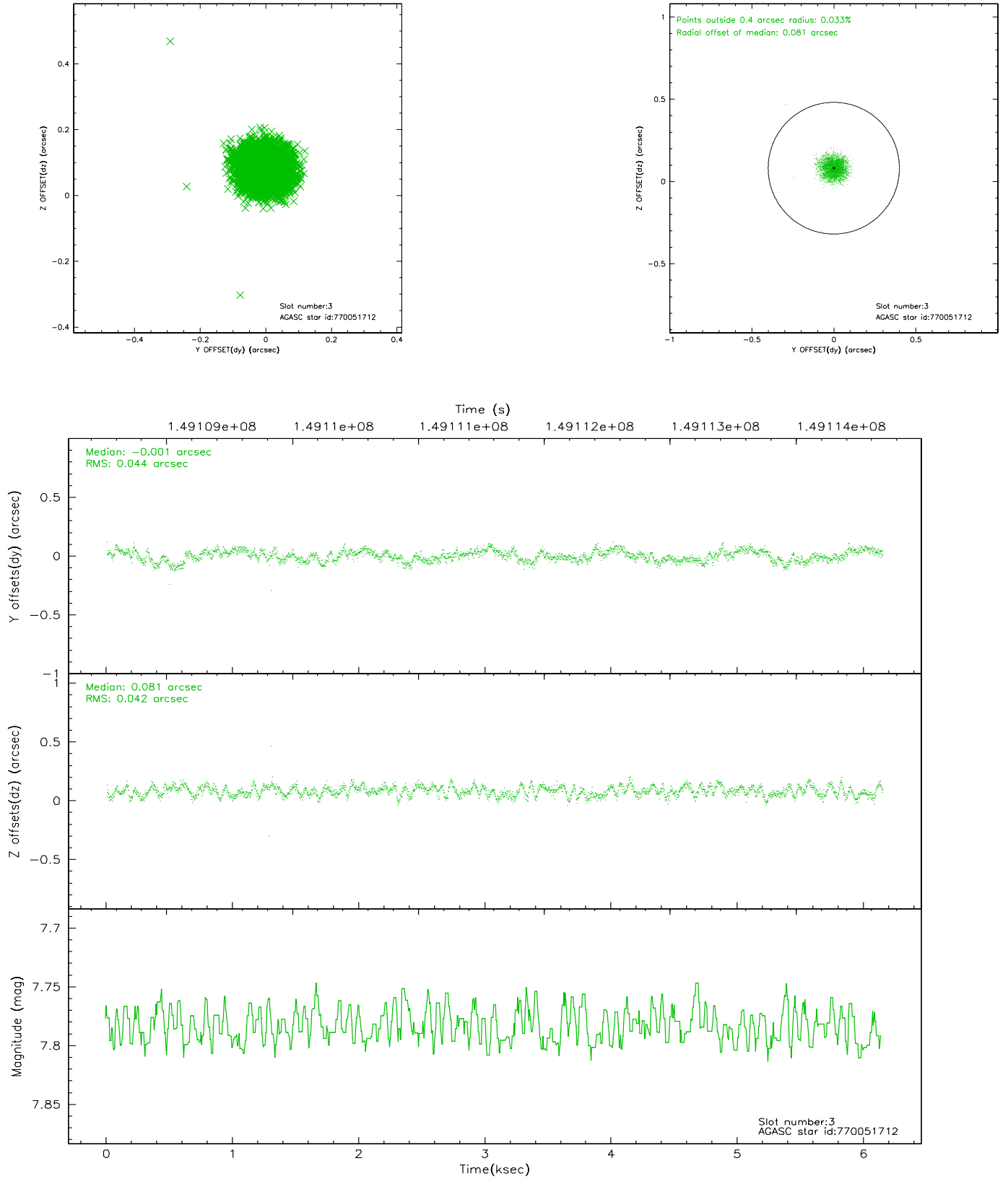


Slot Statistics

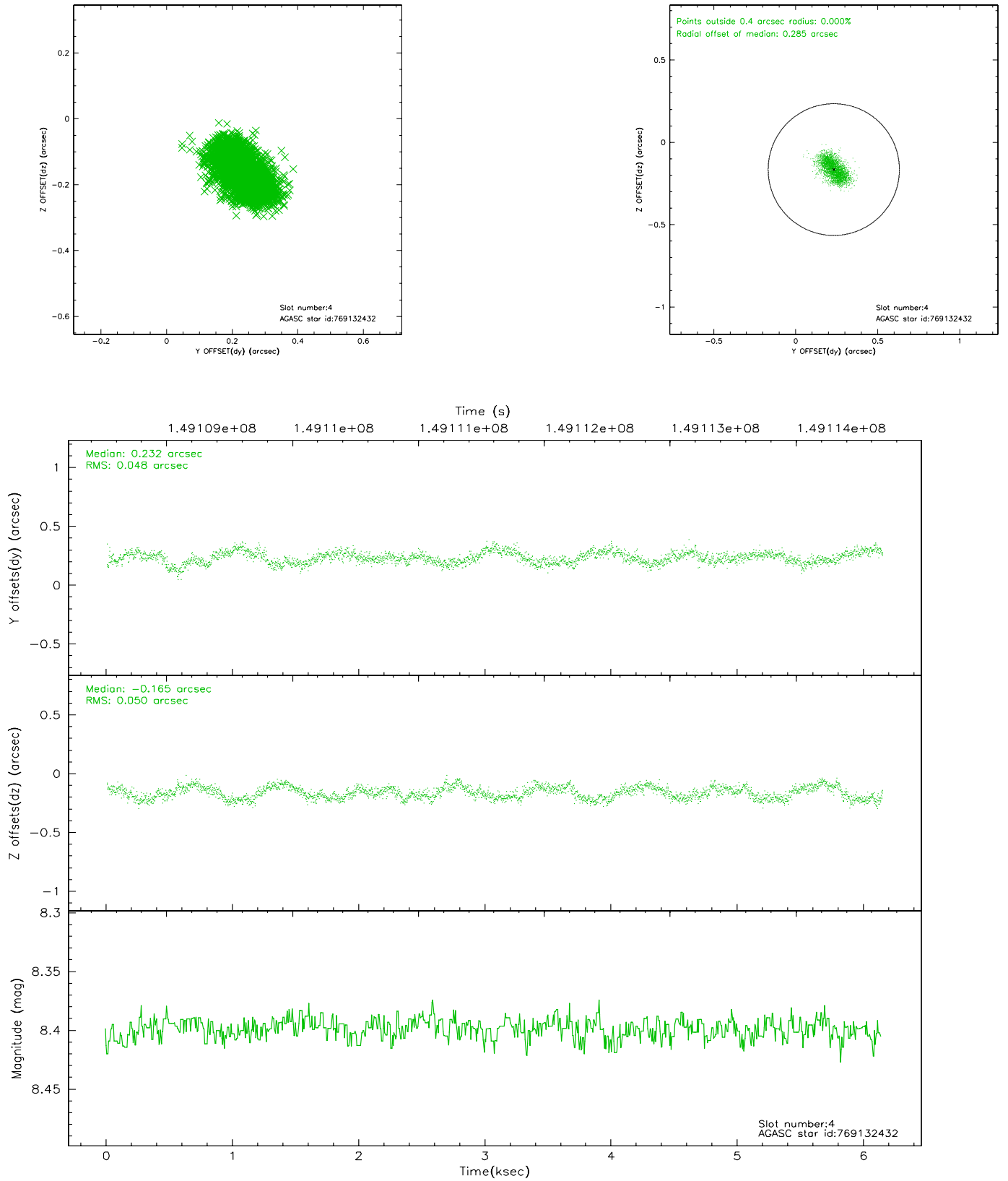
slot	status	id	mag	n_pts	med_dy	med_dz	dr1	dr2	ra	dec	mean_y	mean_z
0	FID	ACIS-S-2	7.11	1499	0.002	0.026	0.007	0.012	0.000000	0.000000	-755.09	-1729.11
1	FID	ACIS-S-4	7.20	1499	-0.075	-0.008	0.005	0.009	0.000000	0.000000	2157.69	178.31
2	FID	ACIS-S-5	7.24	1500	0.042	-0.009	0.006	0.010	0.000000	0.000000	-1806.64	173.12
3	GUIDE	770051712	7.78	2997	-0.001	0.081	0.065	0.099	48.288664	-17.630346	-409.77	-1750.37
4	GUIDE	769132432	8.40	2999	0.232	-0.165	0.075	0.115	47.494994	-17.803592	-1703.90	723.08
5	GUIDE	769657384	8.93	2927	-0.129	0.032	0.090	0.139	48.151335	-16.777713	2440.87	-518.95
6	GUIDE	769659272	9.07	2996	-0.107	0.052	0.141	0.197	48.418304	-17.034498	1779.22	-1642.28
7	UNUSED		0.00	0	0.000	0.000	0.000	0.000	0.000000	0.000000	0.00	0.00

2.4 Star Slots

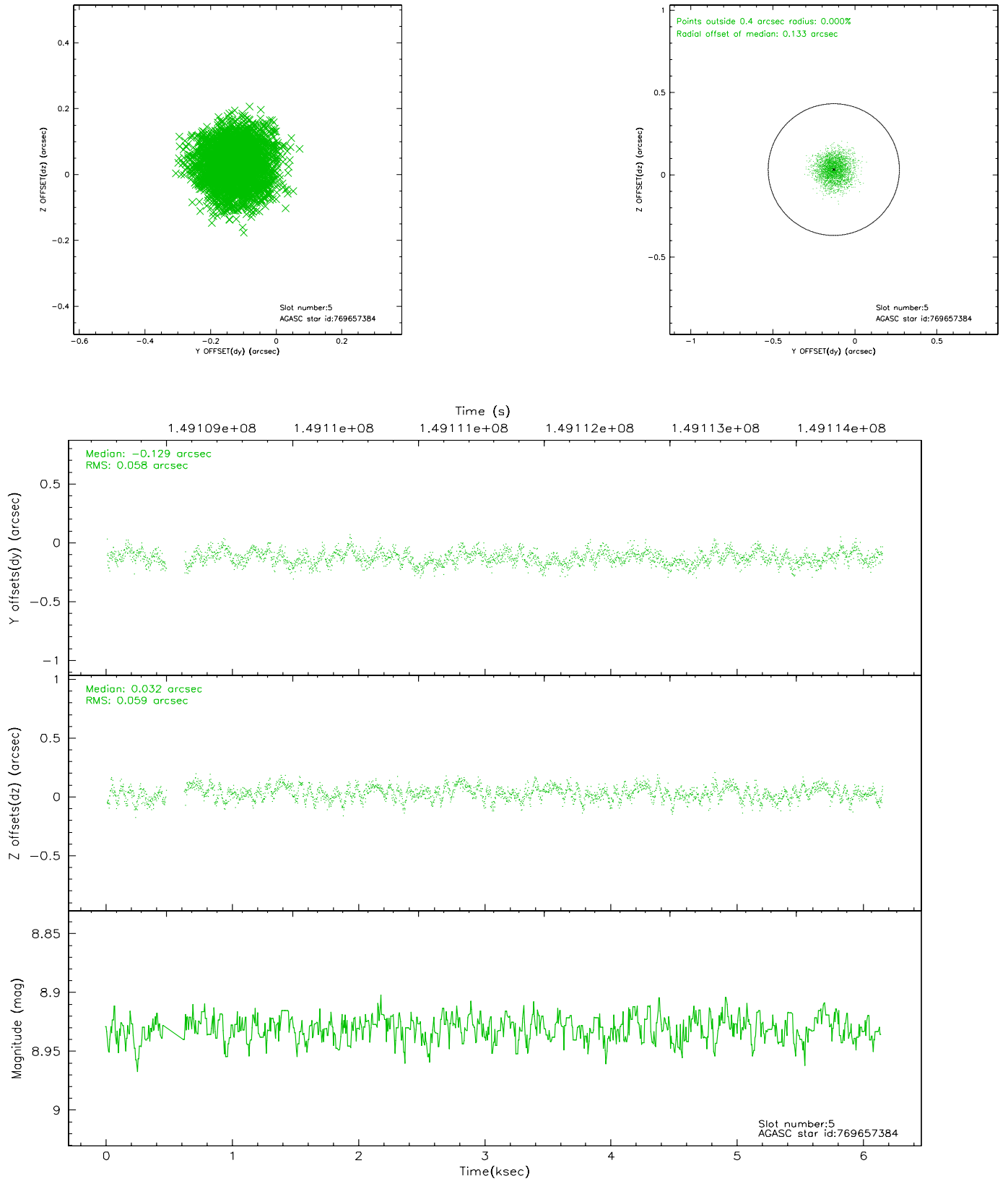
2.4.1 Slot 3



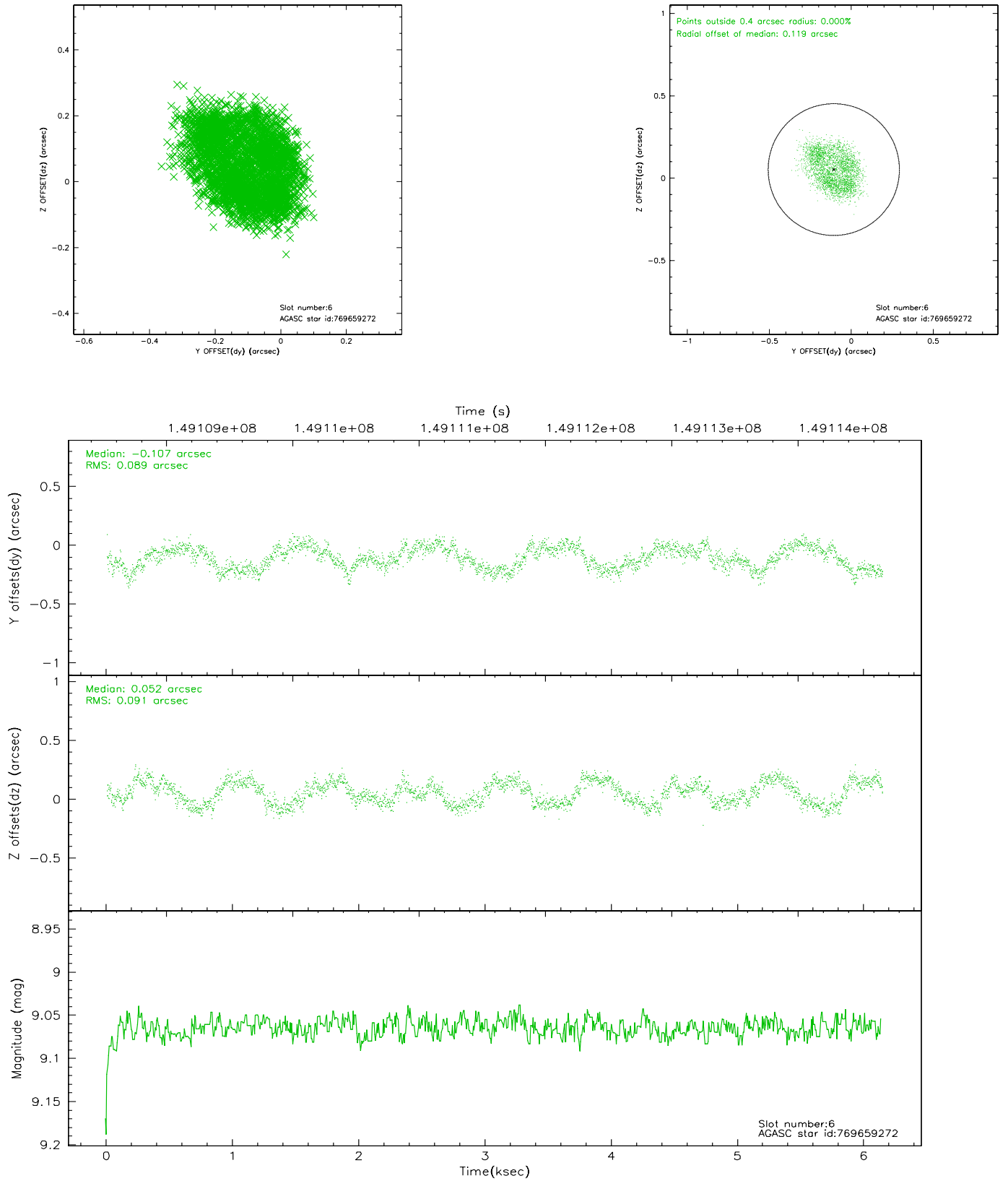
2.4.2 Slot 4



2.4.3 Slot 5

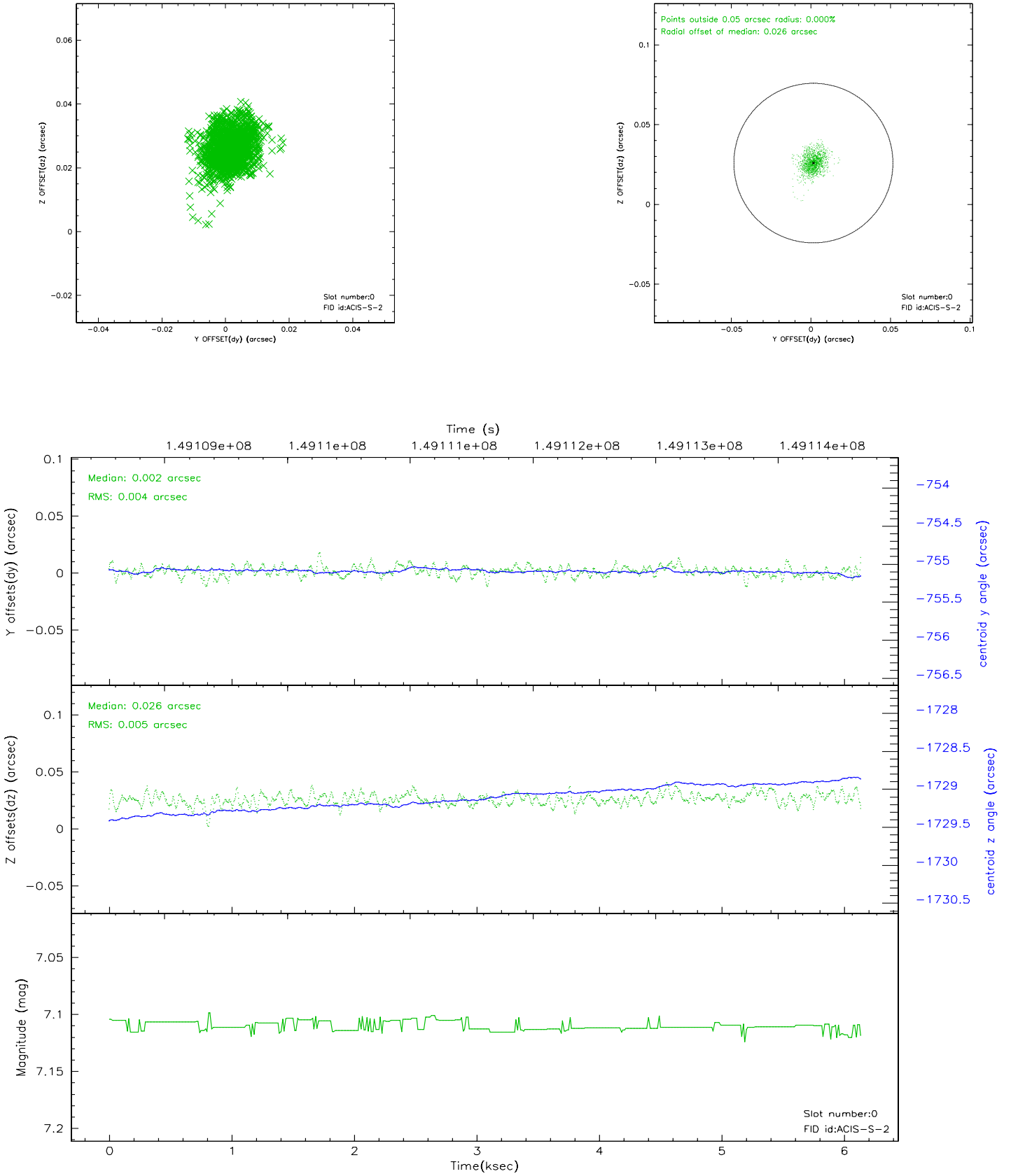


2.4.4 Slot 6

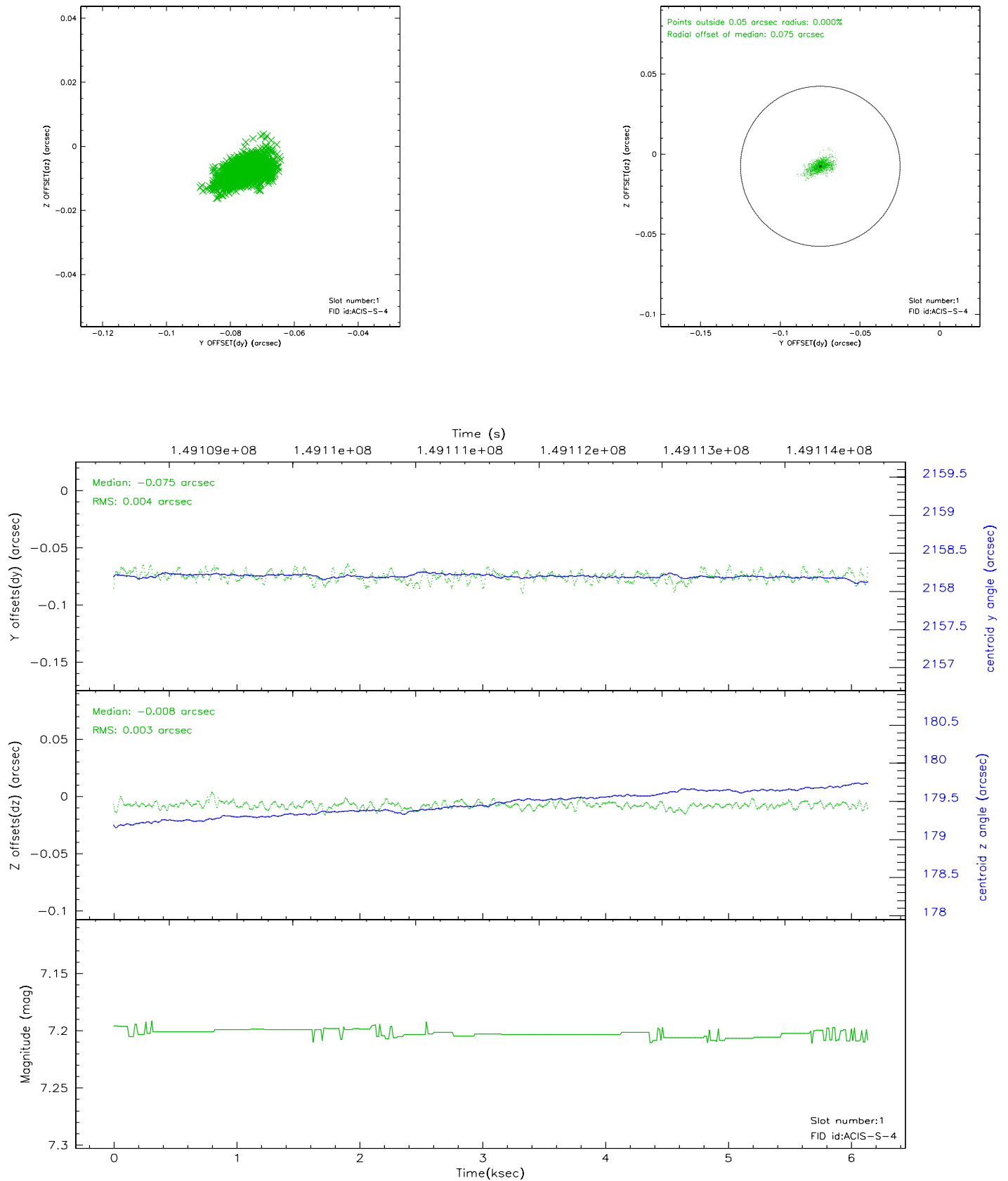


2.5 FID Slots

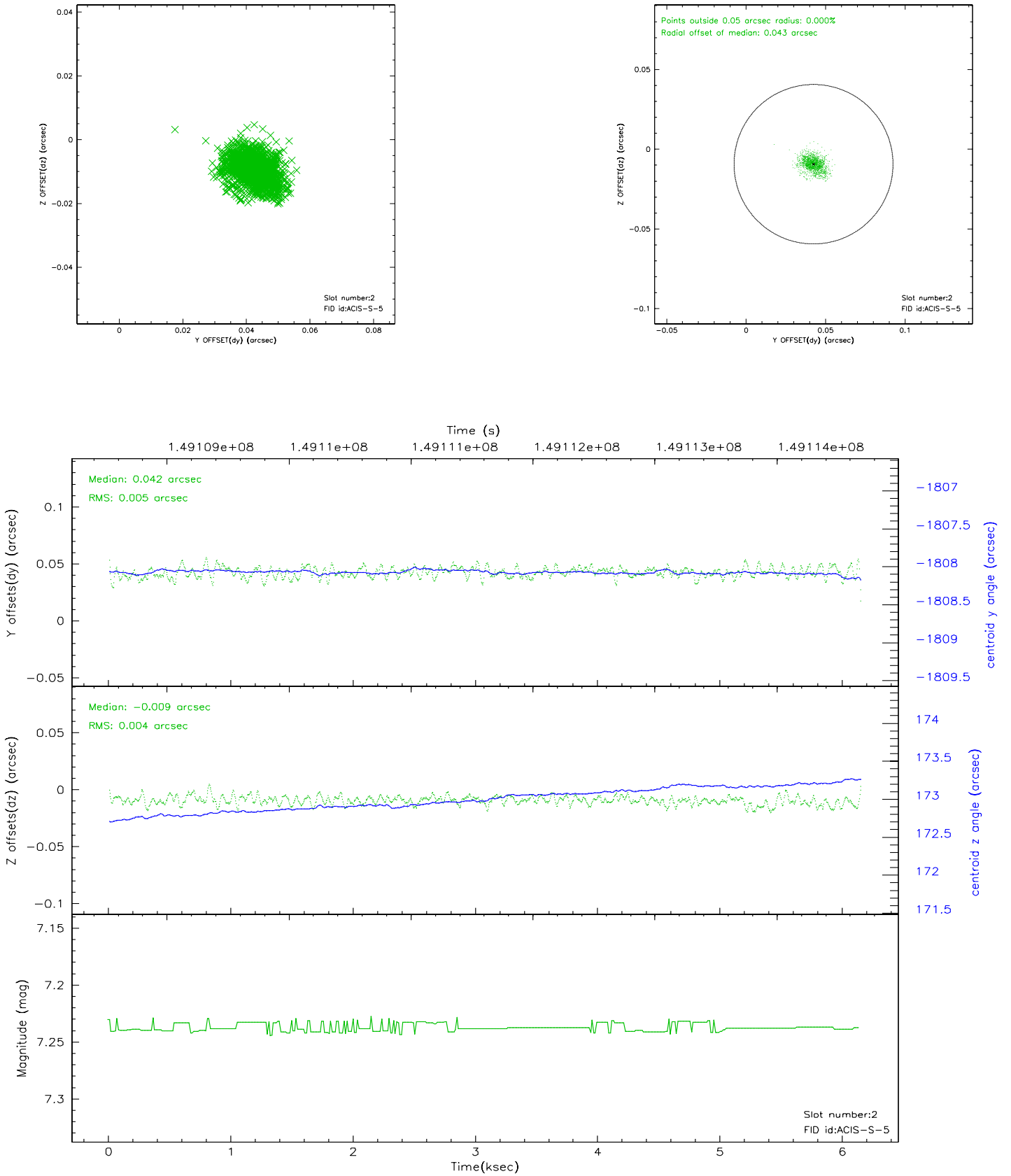
2.5.1 Slot 0



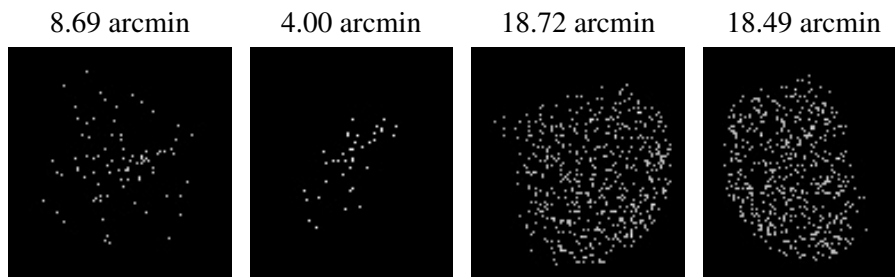
2.5.2 Slot 1



2.5.3 Slot 2



3 Point Sources



A Summary

A.1 Status

V&V Scientist	Jen Lauer
V&V Date (YYYY-MM-DD)	2006.10.04
V&V Edition	1
V&V Disposition and Status	OK
V&V Charge Time	6.137

A.2 Comments