

V&V Reference Report

L2 ASCDS Version : 7.6.8.1

Observation 3151 - L2 Version 001
Chandra X-Ray Center

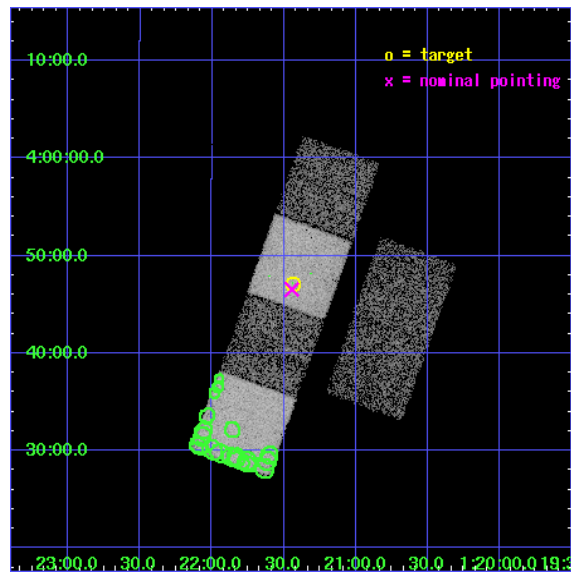
L2 Processing Date : Aug 31 2006

Contents

1	Front	2
2	OBI	3
2.1	OBI	3
2.1.1	Images	3
2.1.2	Bias	3
2.1.3	Parameters	4
2.1.4	Events	4
2.2	Compared Parameters	5
2.3	Aspect	6
2.4	Star Slots	9
2.4.1	Slot 3	9
2.4.2	Slot 4	10
2.4.3	Slot 5	11
2.4.4	Slot 6	12
2.4.5	Slot 7	13
2.5	FID Slots	14
2.5.1	Slot 0	14
2.5.2	Slot 1	15
2.5.3	Slot 2	16
3	Point Sources	17
A	Summary	18
A.1	Status	18
A.2	Comments	18

1 Front

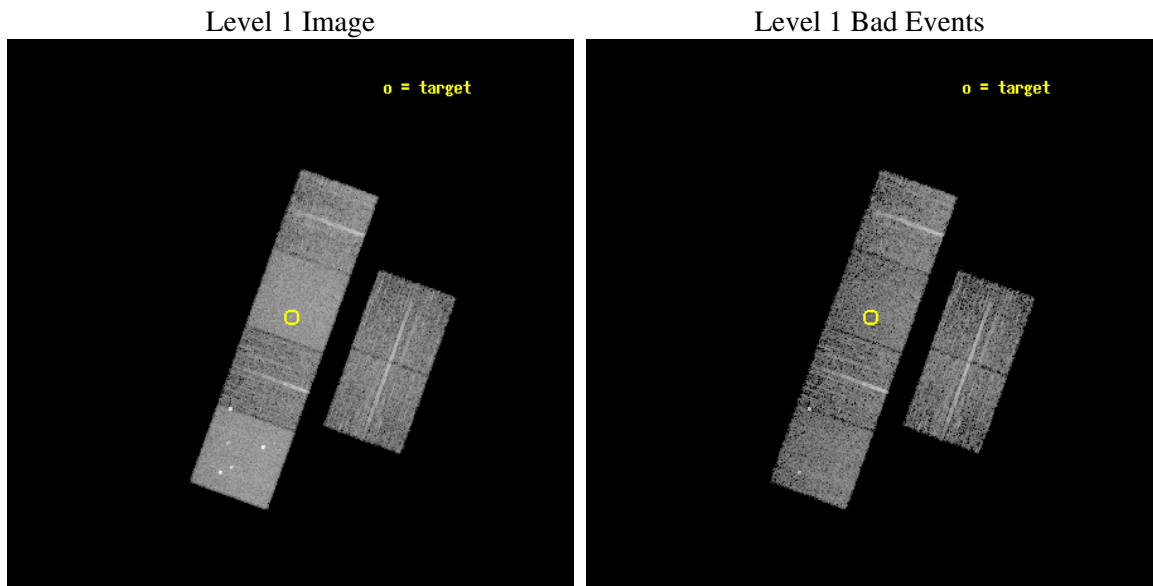
seq_num	700590
obs_id	3151
title	A CHANDRA SURVEY OF THE MOST LUMINOUS QUASARS AT $Z > 4$
observer	Professor Gordon Garmire
object	PSS0121+0347
dtcycle	0
cycle	P
ra_targ	20.359167
dec_targ	3.785278
ra_nom	20.36087234749
dec_nom	3.7756665463068
roll_nom	289.82087154208
revision	2
ontime	5756.8000053614
livetime	5683.9039373647
ontime2	5756.8000053614
ontime3	5756.8000053614
ontime5	5756.8000053614
ontime6	5756.8000053614
ontime7	5756.8000053614
ontime8	5753.5590351075
l2events	83289



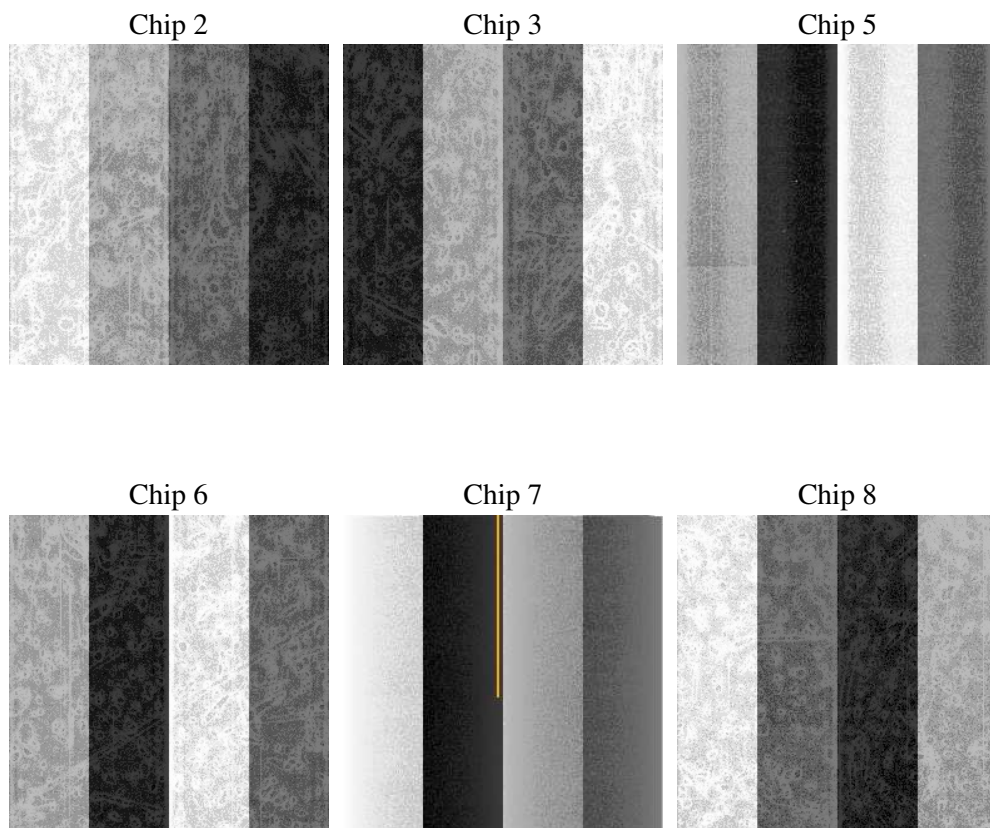
2 OBI

2.1 OBI

2.1.1 Images



2.1.2 Bias



2.1.3 Parameters

obi_num	2
ascdsver	7.6.8.1
caldbver	3.2.3
date	2006-08-31T11:52:34
revision	2

sched_exp_time	6000.000000
ontime	5762.495682314
ontime2	5762.495682314
ontime3	5762.495682314
ontime5	5762.495682314
ontime6	5762.495682314
ontime7	5762.495682314
ontime8	5759.2546124011
l1events	299781

2.1.4 Events

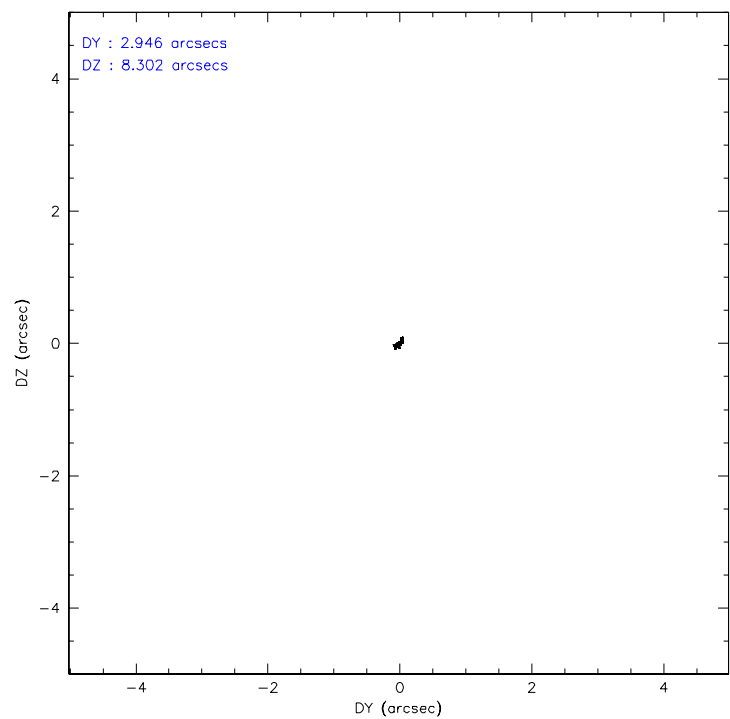
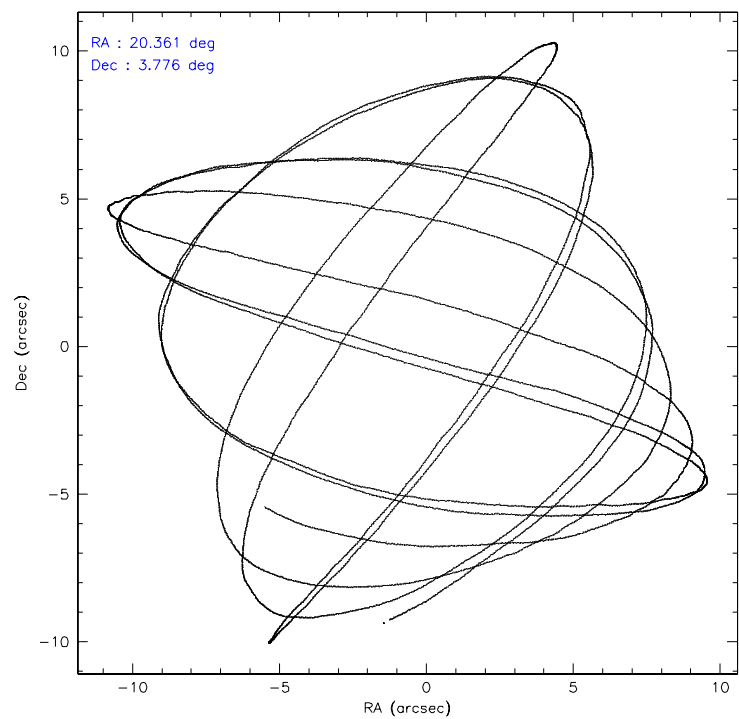
	ccd 2	ccd 3	ccd 5	ccd 6	ccd 7	ccd 8
level 1 events	39420	36685	71200	38373	63333	50770
rejected events	34670	32032	32697	32811	31968	40487
rejected %	87%	87%	45%	85%	50%	79%

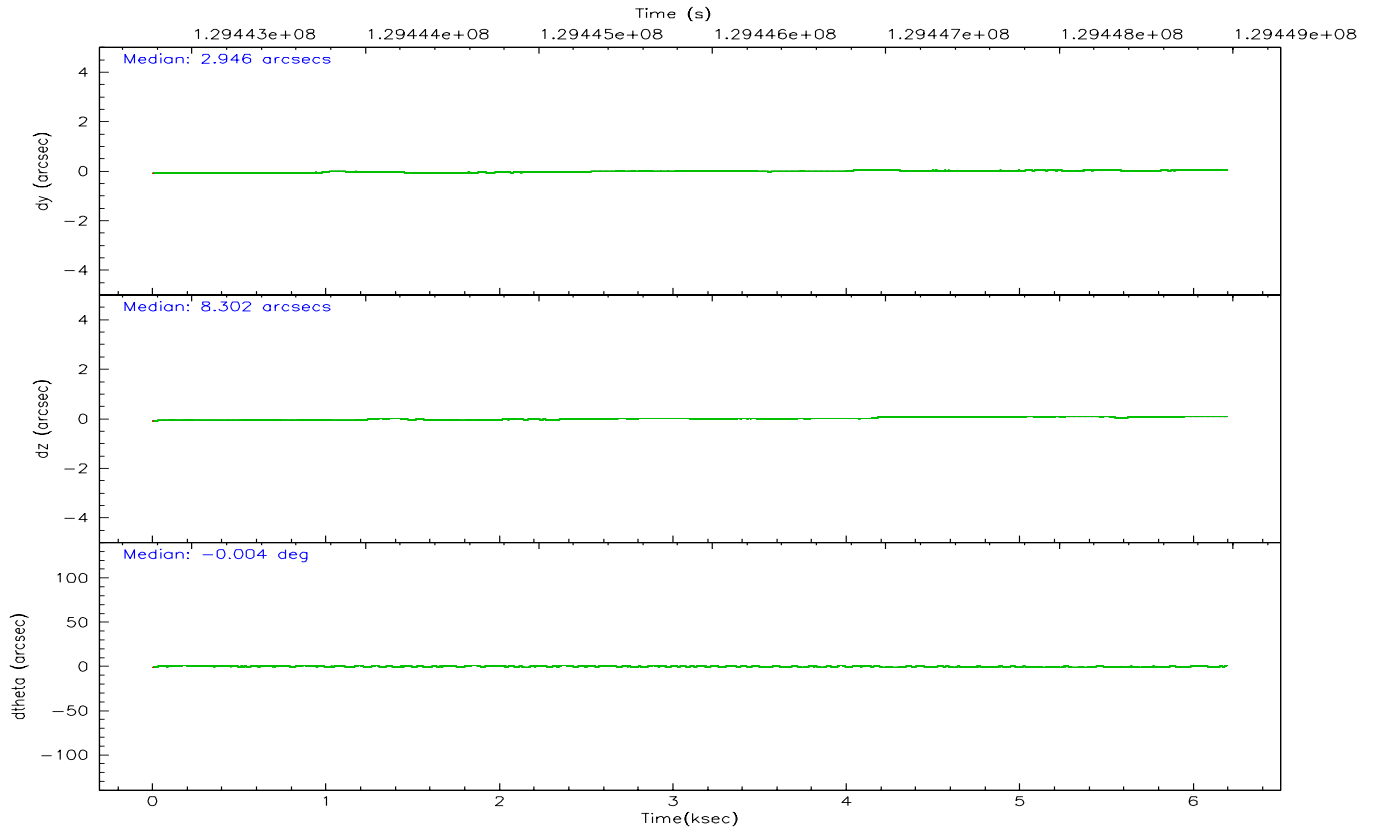
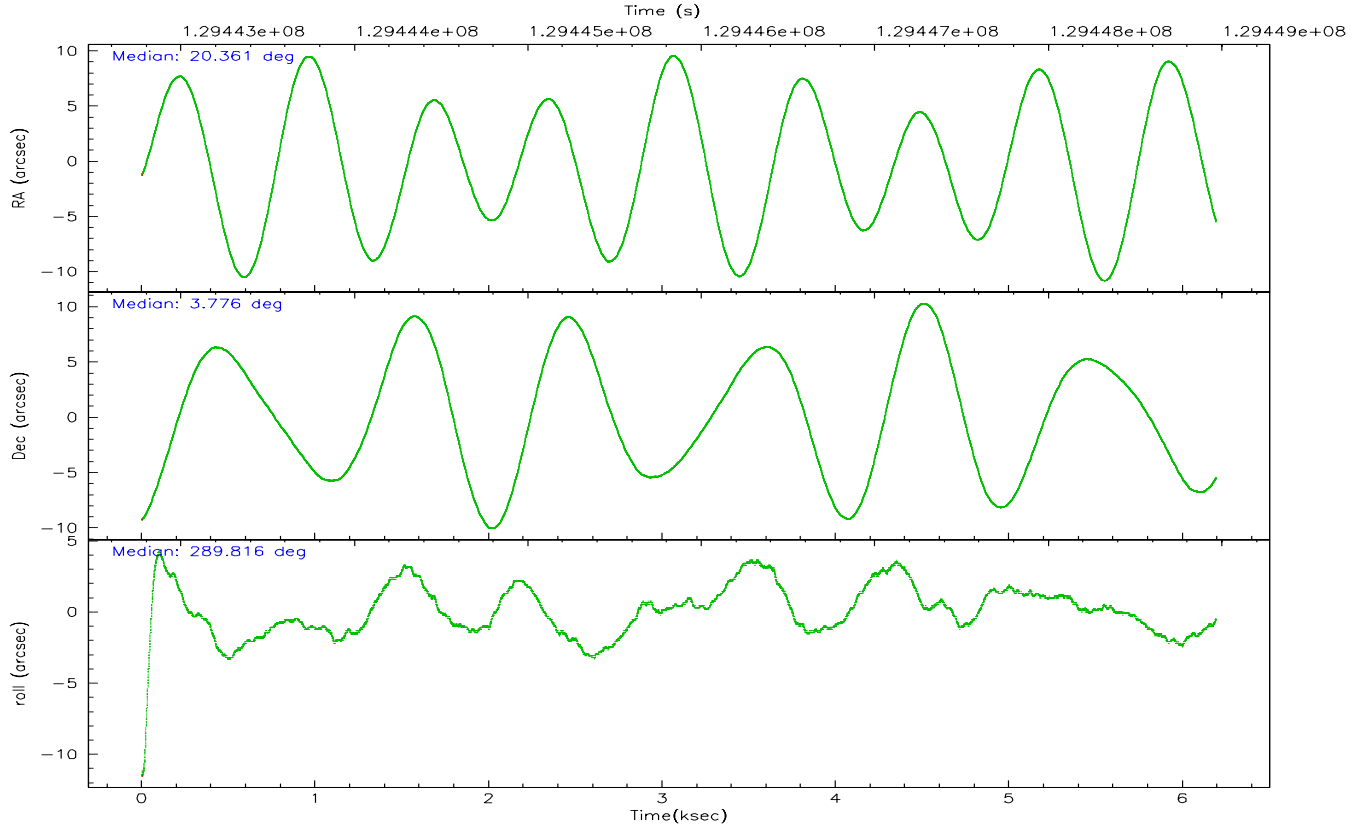
	ccd 2	ccd 3	ccd 5	ccd 6	ccd 7	ccd 8
grade 0 events	2141	2136	5460	2773	2440	3690
	5%	5%	7%	7%	3%	7%
grade 1 events	19	20	332	22	26	43
	0%	0%	0%	0%	0%	0%
grade 2 events	1045	910	11564	1055	6980	2163
	2%	2%	16%	2%	11%	4%
grade 3 events	385	416	1067	419	1735	1007
	0%	1%	1%	1%	2%	1%
grade 4 events	403	416	1067	432	1698	966
	1%	1%	1%	1%	2%	1%
grade 5 events	1395	1478	2992	1602	3364	2026
	3%	4%	4%	4%	5%	3%
grade 6 events	780	784	19385	886	18539	2459
	1%	2%	27%	2%	29%	4%
grade 7 events	33252	30525	29333	31184	28551	38416
	84%	83%	41%	81%	45%	75%

2.2 Compared Parameters

Parameter	Planned	Actual	Parameter	Planned	Actual
Instrument	ACIS	ACIS	Obspar format version number	6	6
Detector	ACIS-235678	ACIS-235678	Obspar file type	PREDICTED	ACTUAL
Grating	NONE	NONE	Obspar update status	NONE	UPDATED
Data mode	FAINT	FAINT	On-chip summing requested	N	N
Observation mode	POINTING	POINTING	Subarray requested	NONE	NONE
Pointing RA	20.339715	20.36087234748981	Alternating exposures requested	N	N
Pointing Dec	3.793034	3.775666546306766	Primary exposure time	0.000000	3.2
Pointing Roll	289.665671	289.8208715420779			
SIM focus pos (mm)	-0.684267	-0.6828225247311905			
SIM defocus (mm)	0	0.001444936568705701			
SIM translation stage pos (mm)	-190.132523	-190.1425803651734			
SIM translation stage offset (mm)	0	0.01005778216563158			
Observation start time	129442971.184000	129442295.17863			
Observation start date	2002-02-07T04:21:47	2002-02-07T04:11:35			
Observation end time	129448971.184000	129449225.20391			
Observation end date	2002-02-07T06:01:47	2002-02-07T06:07:05			
Read mode	TIMED	TIMED			

2.3 Aspect



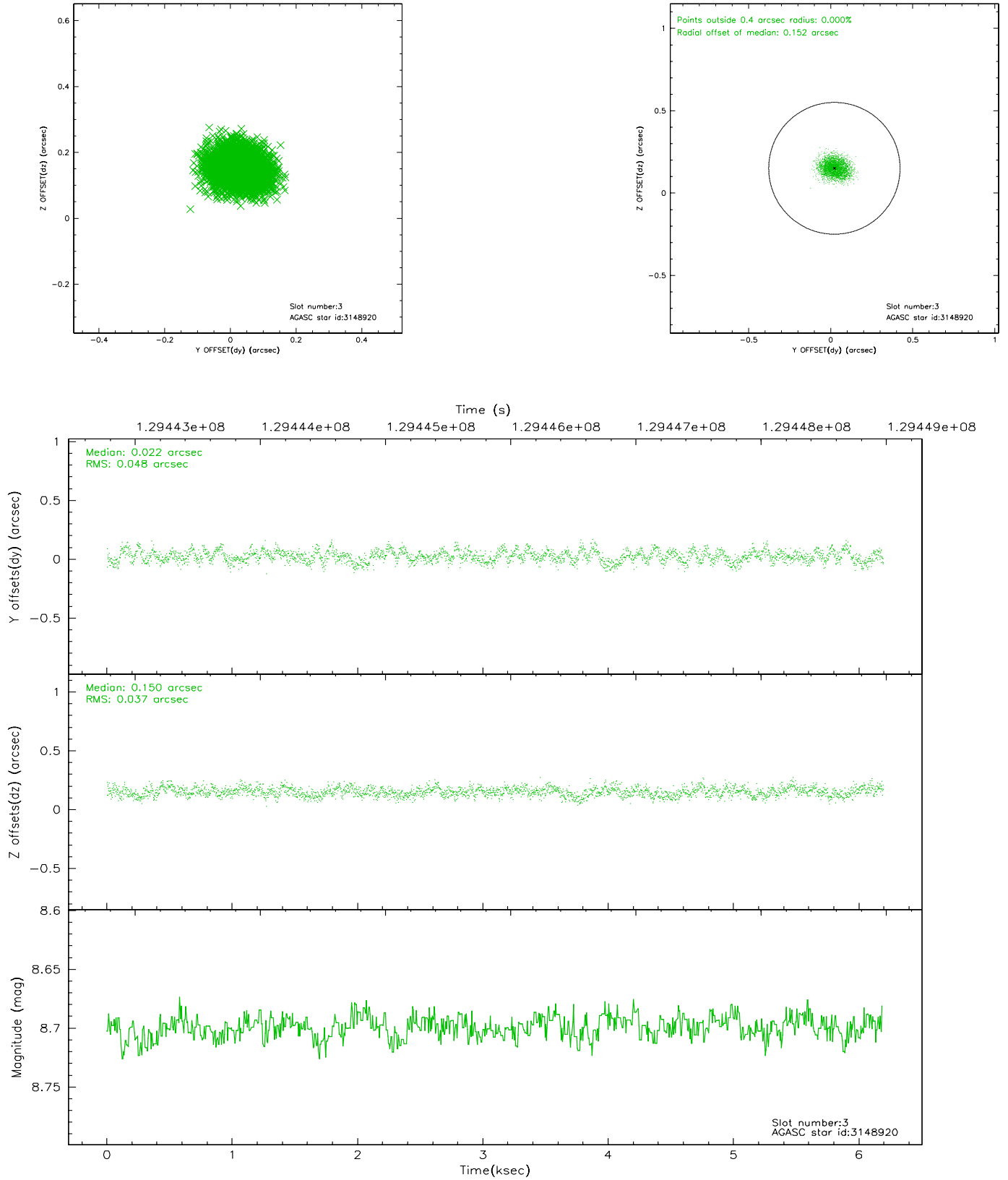


Slot Statistics

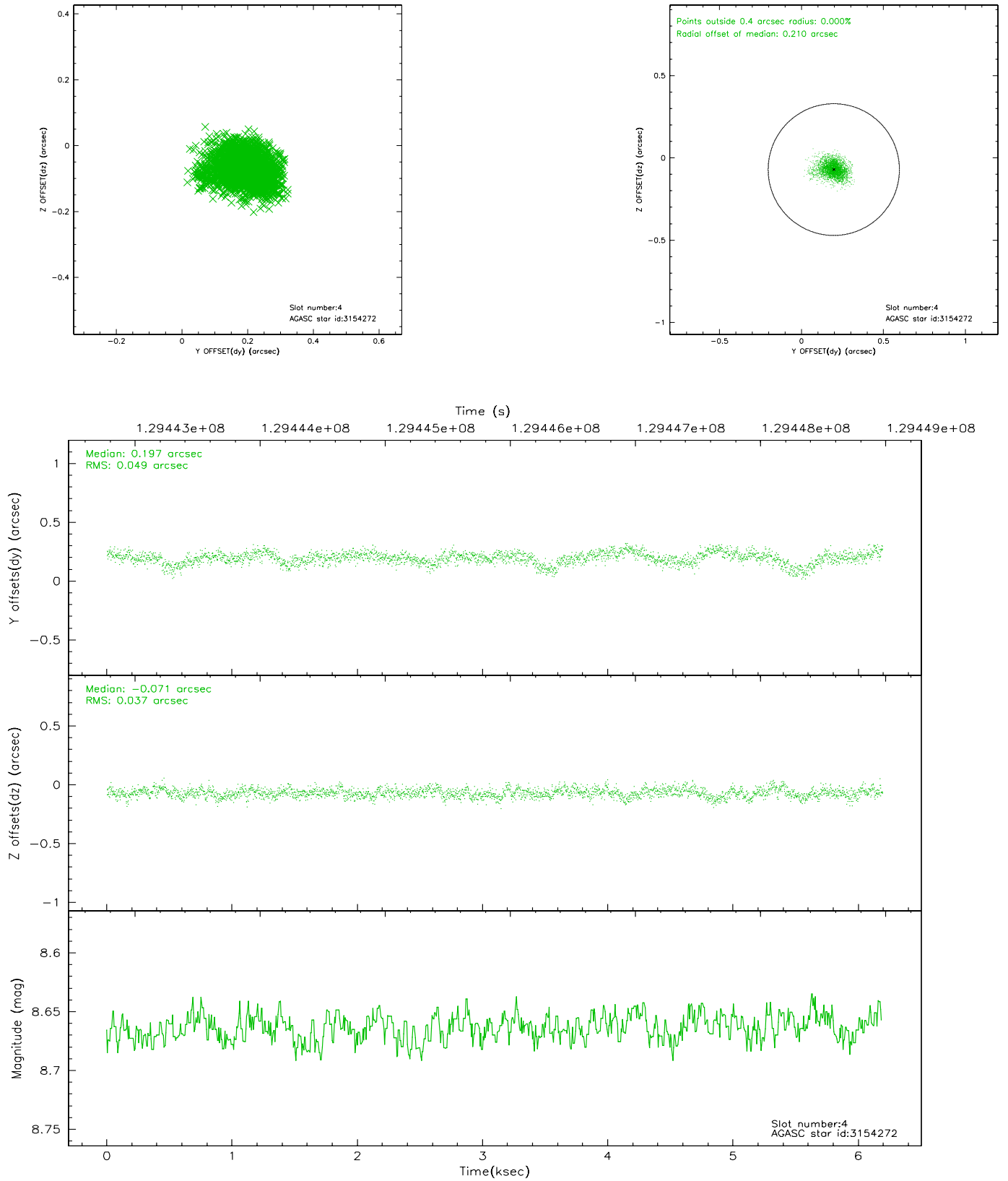
slot	status	id	mag	n_pts	med_dy	med_dz	dr1	dr2	ra	dec	mean_y	mean_z
0	FID	ACIS-S-2	7.10	1511	0.012	0.023	0.006	0.011	0.000000	0.000000	-755.57	-1729.43
1	FID	ACIS-S-4	7.20	1509	-0.087	-0.012	0.005	0.008	0.000000	0.000000	2157.18	178.02
2	FID	ACIS-S-5	7.24	1511	0.044	-0.003	0.006	0.011	0.000000	0.000000	-1807.15	172.80
3	GUIDE	3148920	8.70	3022	0.022	0.150	0.066	0.105	20.922532	3.314729	2325.70	1393.16
4	GUIDE	3154272	8.66	3021	0.197	-0.071	0.064	0.112	20.578009	3.513105	1238.27	467.24
5	GUIDE	3150624	8.87	3022	-0.081	-0.016	0.062	0.100	20.408334	4.257468	-1491.26	794.25
6	GUIDE	3154680	9.65	3019	0.078	0.058	0.101	0.168	20.686228	3.787445	437.08	1165.35
7	GUIDE	3023784	9.46	3019	-0.216	-0.122	0.086	0.144	19.615973	4.176850	-2176.69	-1982.05

2.4 Star Slots

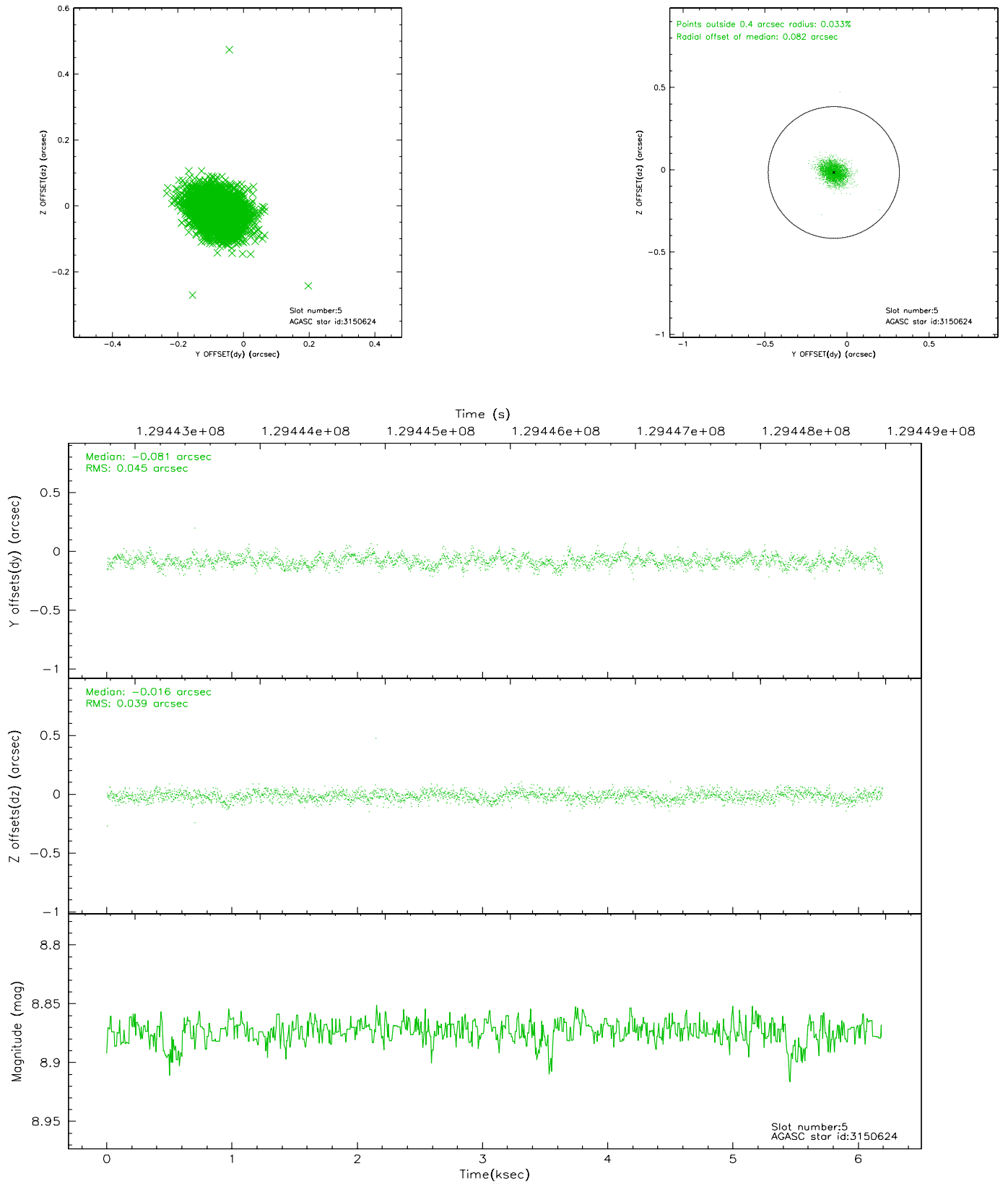
2.4.1 Slot 3



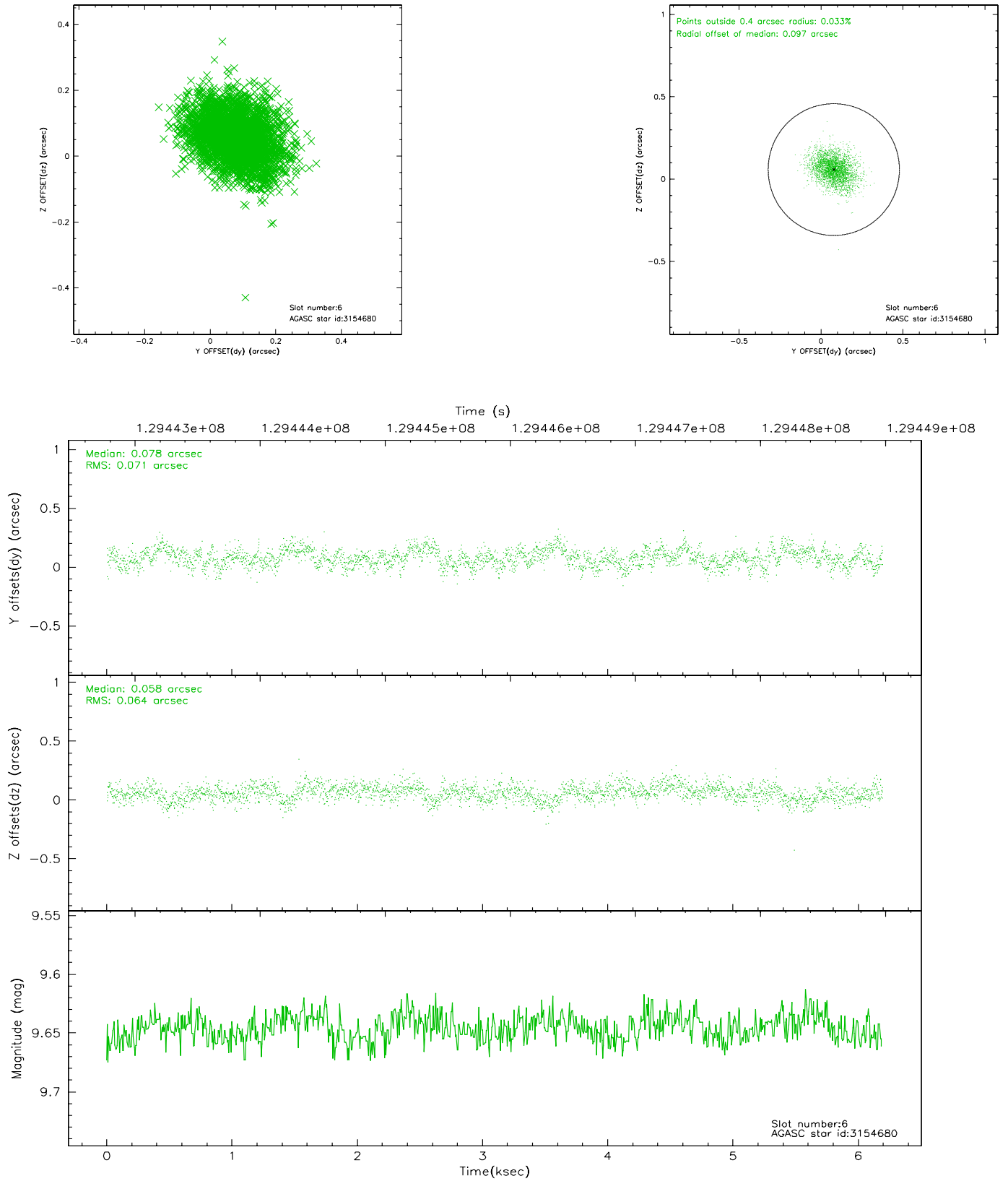
2.4.2 Slot 4



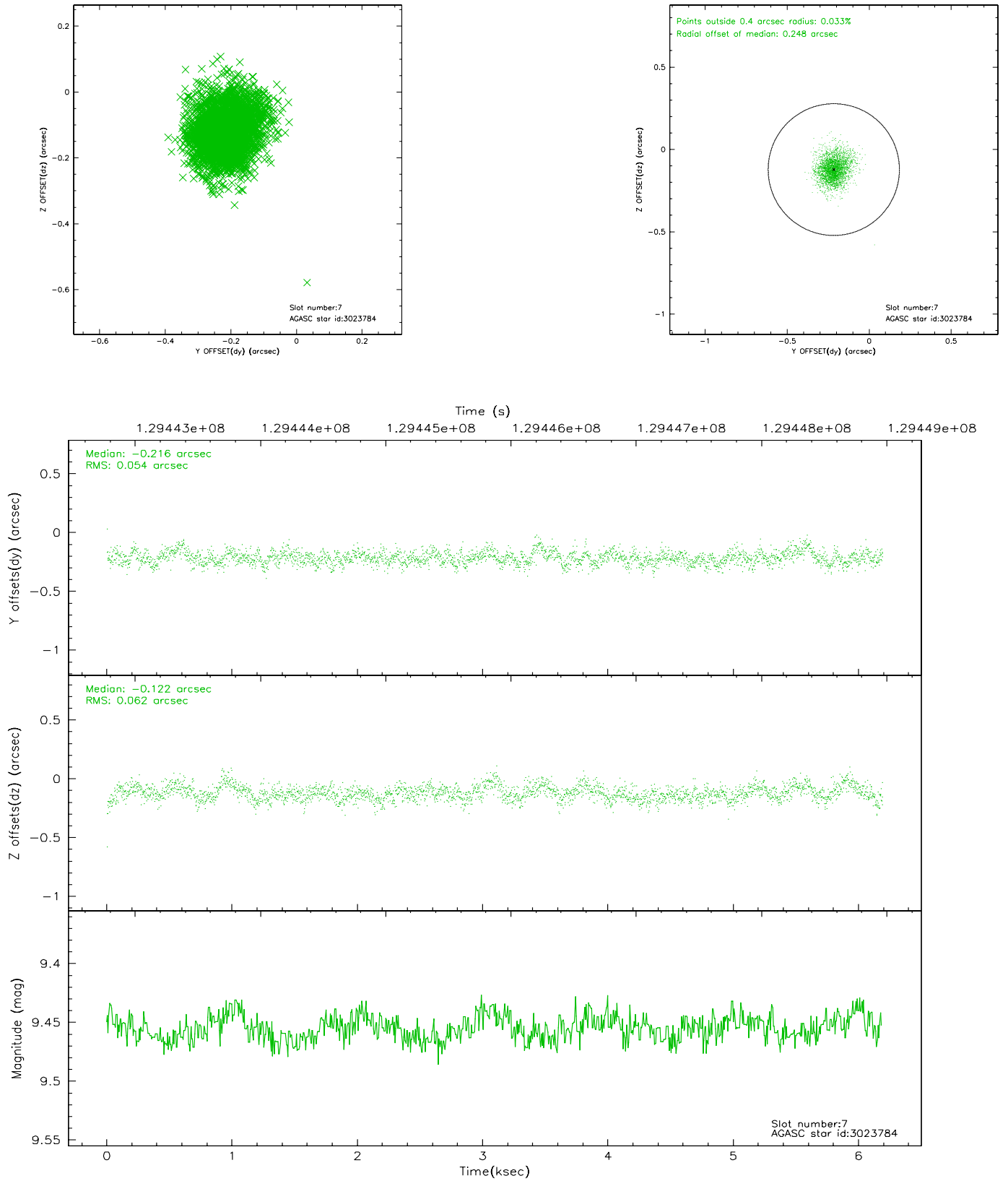
2.4.3 Slot 5



2.4.4 Slot 6

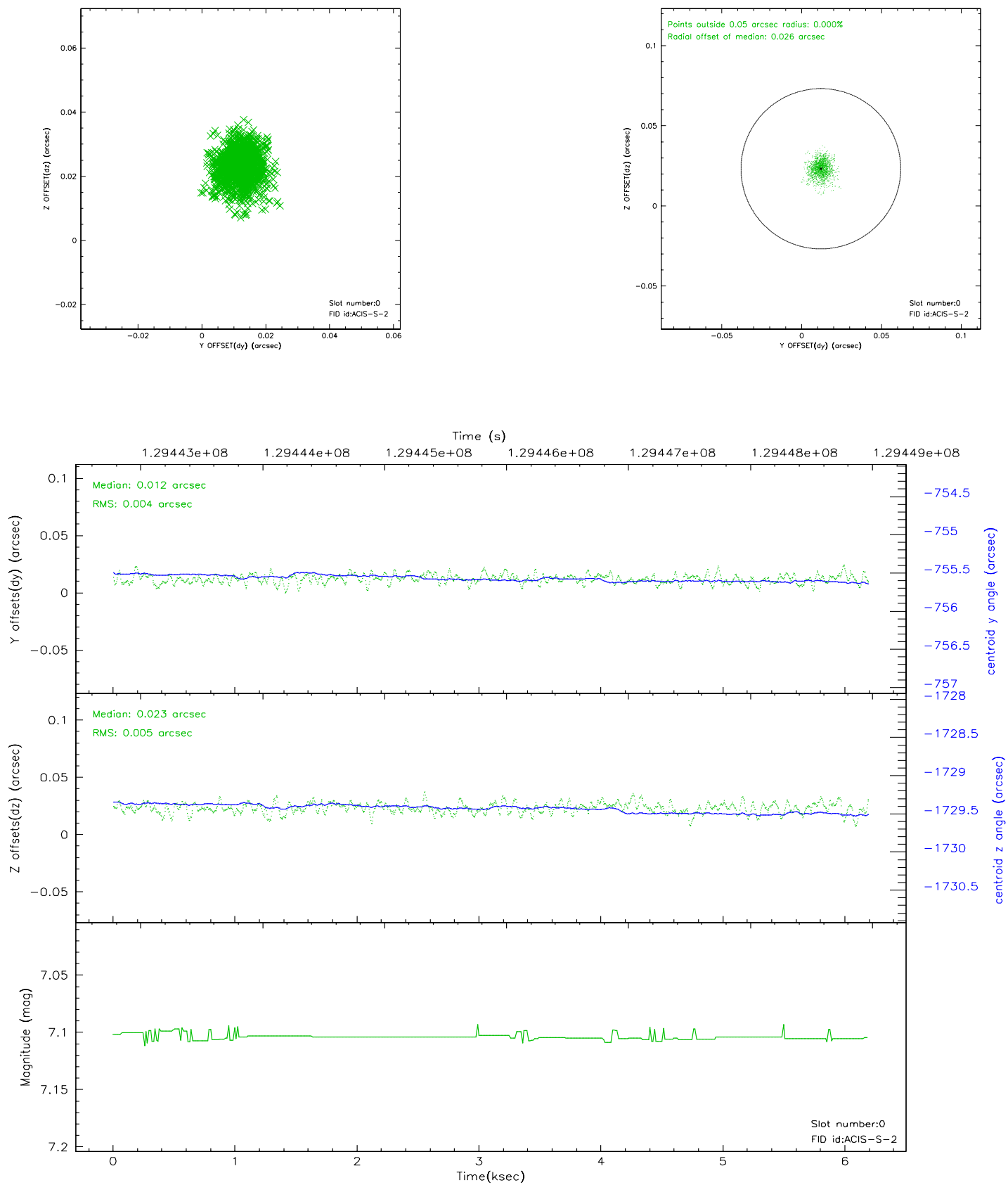


2.4.5 Slot 7

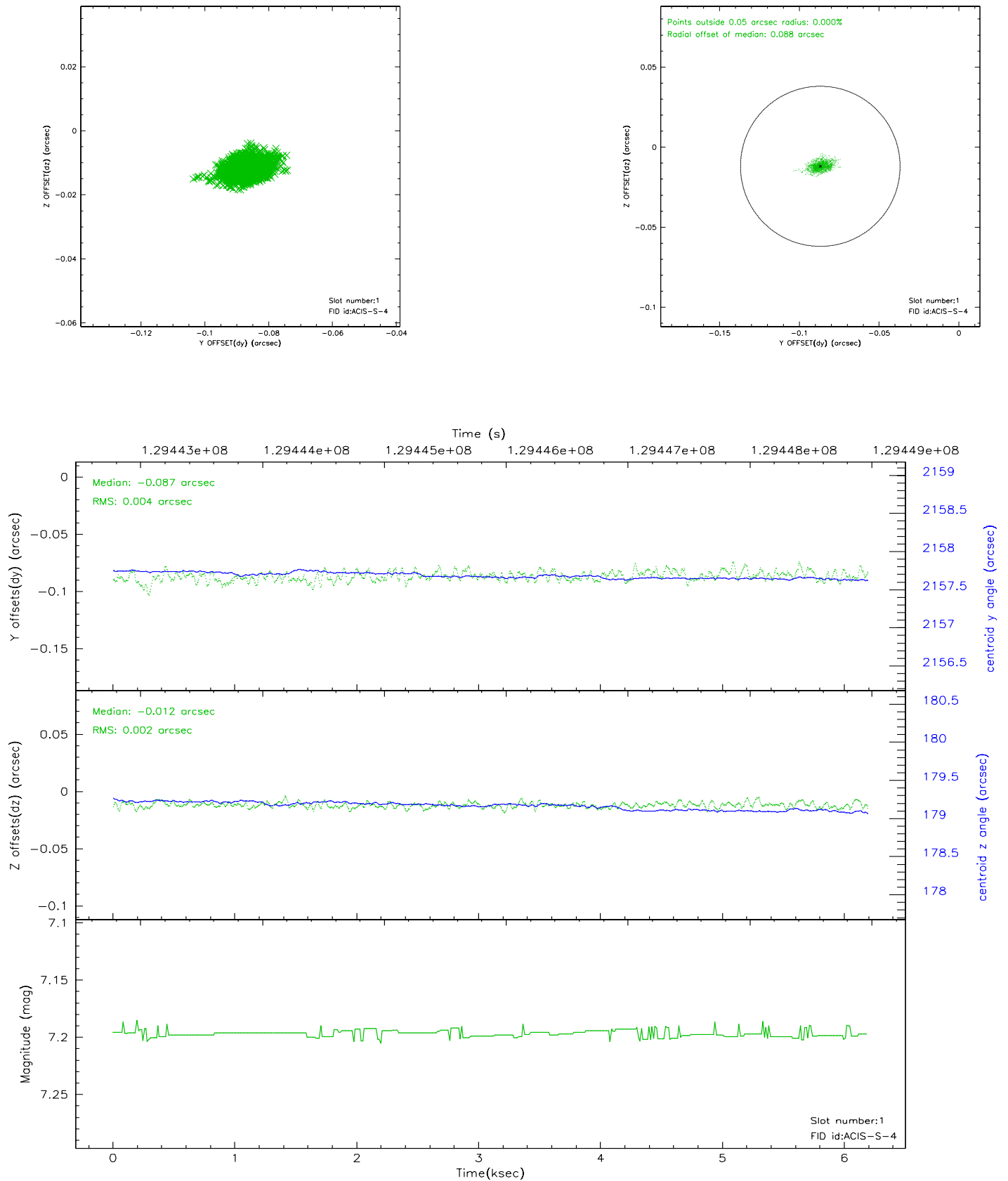


2.5 FID Slots

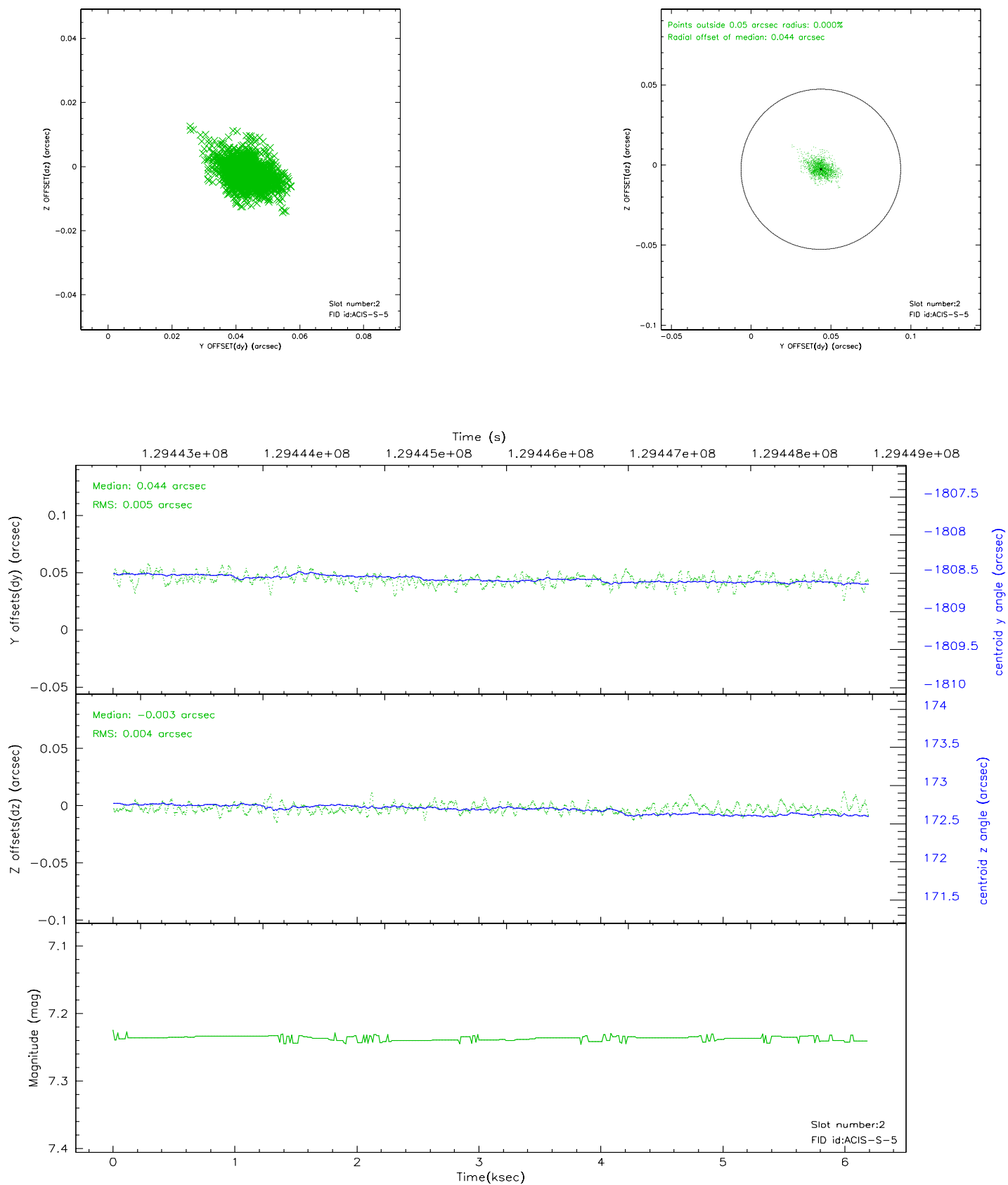
2.5.1 Slot 0



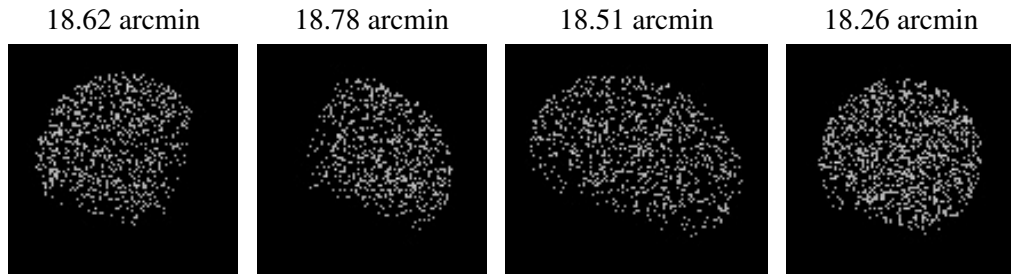
2.5.2 Slot 1



2.5.3 Slot 2



3 Point Sources



A Summary

A.1 Status

V&V Scientist	Jen Lauer
V&V Date (YYYY-MM-DD)	2006.08.31
V&V Edition	1
V&V Disposition and Status	OK
V&V Charge Time	5.76

A.2 Comments