

V&V Reference Report

L2 ASCDS Version : 7.6.9

Observation 3150 - L2 Version 001
Chandra X-Ray Center

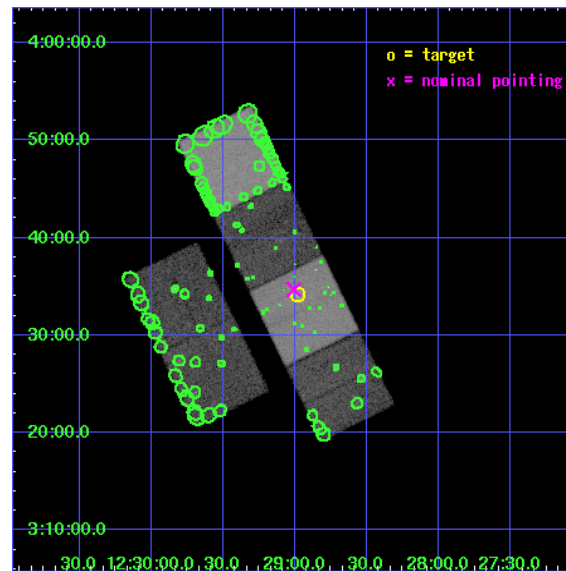
L2 Processing Date : Oct 13 2006

Contents

1	Front	2
2	OBI	3
2.1	OBI	3
2.1.1	Images	3
2.1.2	Bias	3
2.1.3	Parameters	4
2.1.4	Events	4
2.2	Compared Parameters	5
2.3	Aspect	6
2.4	Star Slots	9
2.4.1	Slot 3	9
2.4.2	Slot 4	10
2.4.3	Slot 5	11
2.4.4	Slot 6	12
2.4.5	Slot 7	13
2.5	FID Slots	14
2.5.1	Slot 0	14
2.5.2	Slot 1	15
2.5.3	Slot 2	16
3	Point Sources	17
A	Summary	18
A.1	Status	18
A.2	Comments	18

1 Front

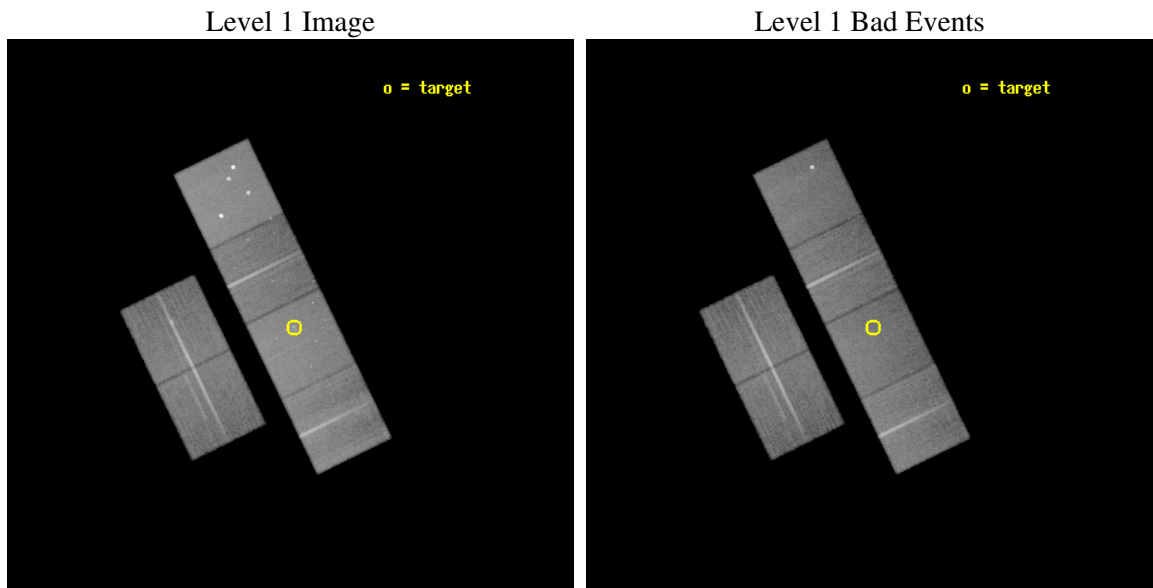
seq_num	700589
obs_id	3150
title	CHANDRA OBSERVATIONS OF TYPE-2 LINERS: STARBURSTS OR AGNS ?
observer	Dr. Andreas Zezas
object	NGC4457
dtcycle	0
cycle	P
ra_targ	187.24625
dec_targ	3.570556
ra_nom	187.25195157838
dec_nom	3.5783590437205
roll_nom	63.99117769739
revision	3
ontime	39382.399853289
livetime	38883.716193113
ontime2	39382.399853289
ontime3	39379.158863127
ontime5	39379.158893049
ontime6	39382.399853289
ontime7	39382.399853289
ontime8	39379.158902943
l2events	396511



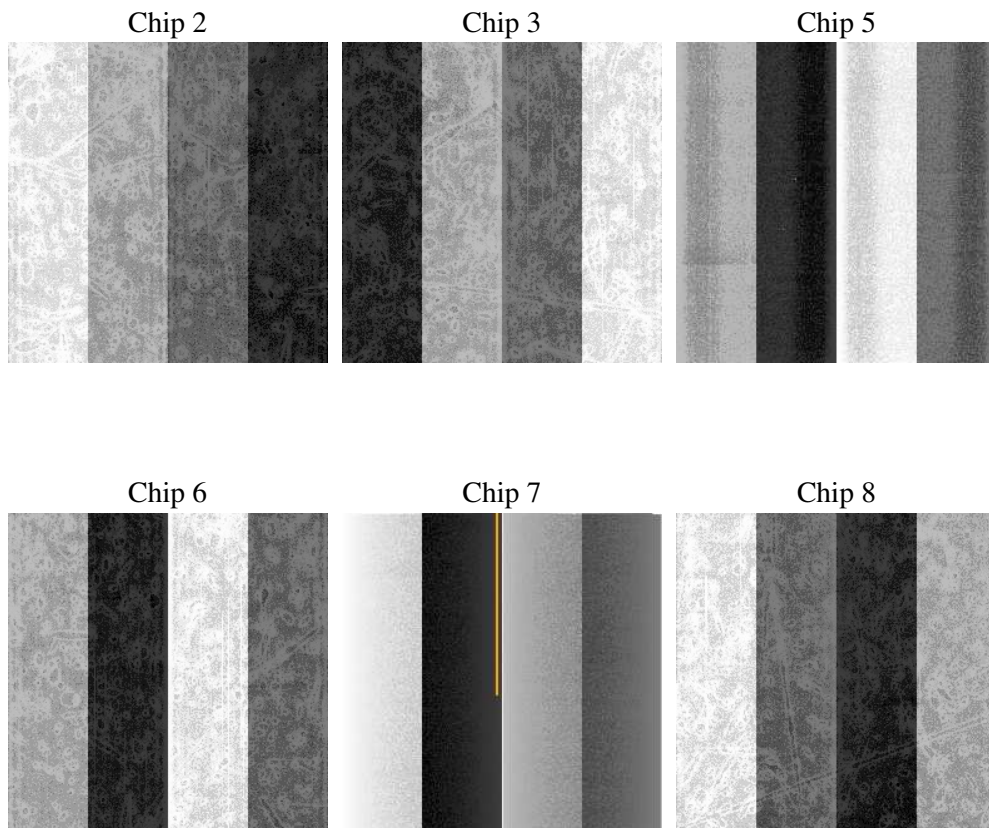
2 OBI

2.1 OBI

2.1.1 Images



2.1.2 Bias



2.1.3 Parameters

obi_num	0
ascdsver	7.6.9
caldsver	3.2.3
date	2006-10-13T19:12:07
revision	3

sched_exp_time	39627.720000
ontime	39387.876802534
ontime2	39387.876802534
ontime3	39384.635812372
ontime5	39384.635842294
ontime6	39387.876802534
ontime7	39387.876802534
ontime8	39384.635742605
l1events	1807696

2.1.4 Events

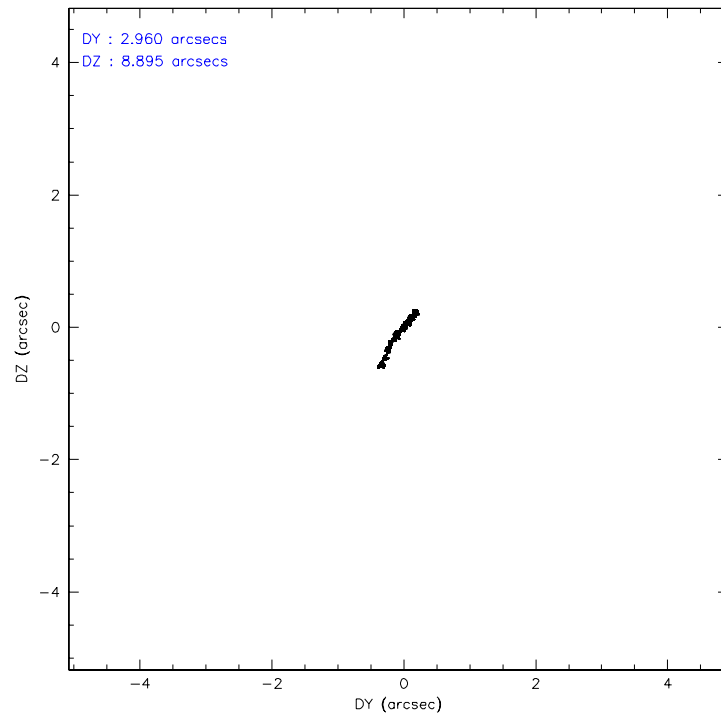
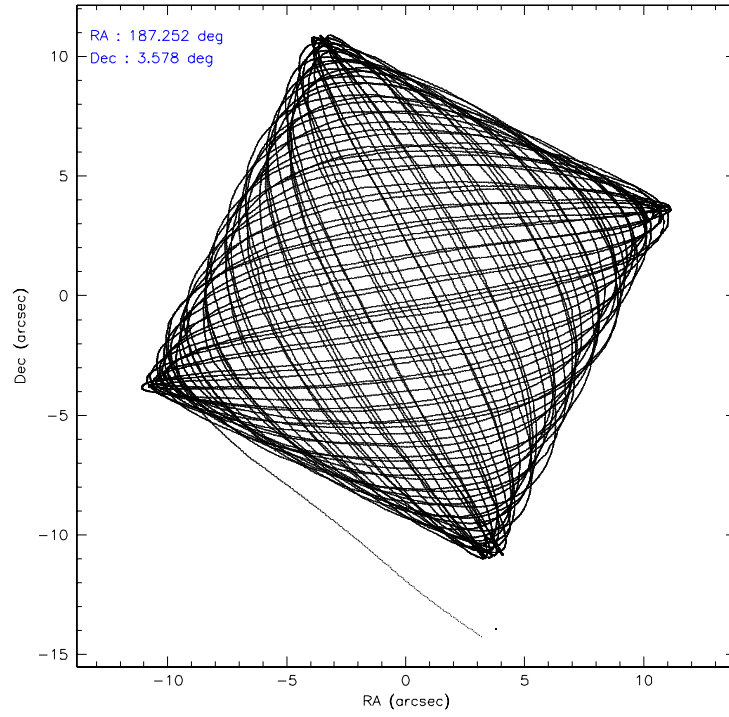
	ccd 2	ccd 3	ccd 5	ccd 6	ccd 7	ccd 8
level 1 events	255685	243600	391522	258085	341044	317760
rejected events	224878	214530	208358	226846	205435	252508
rejected %	87%	88%	53%	87%	60%	79%

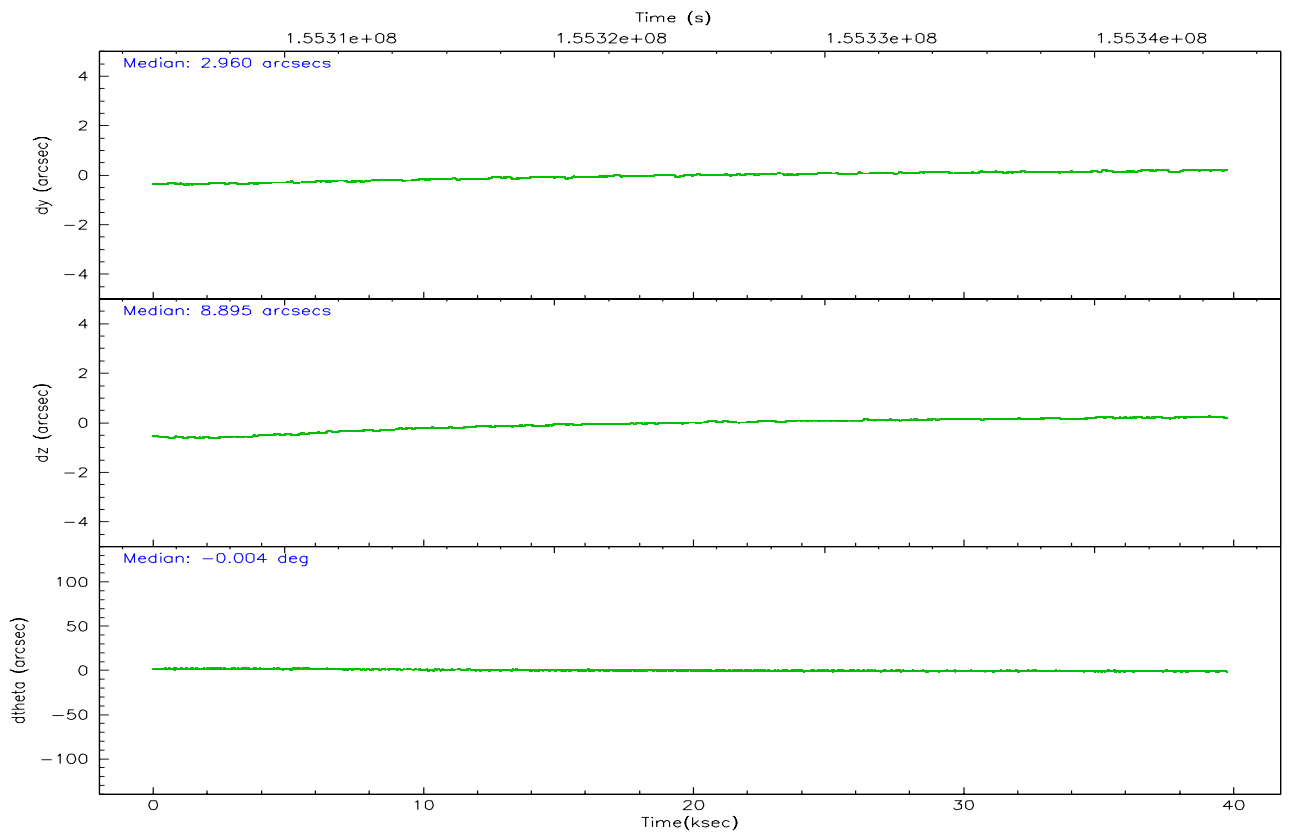
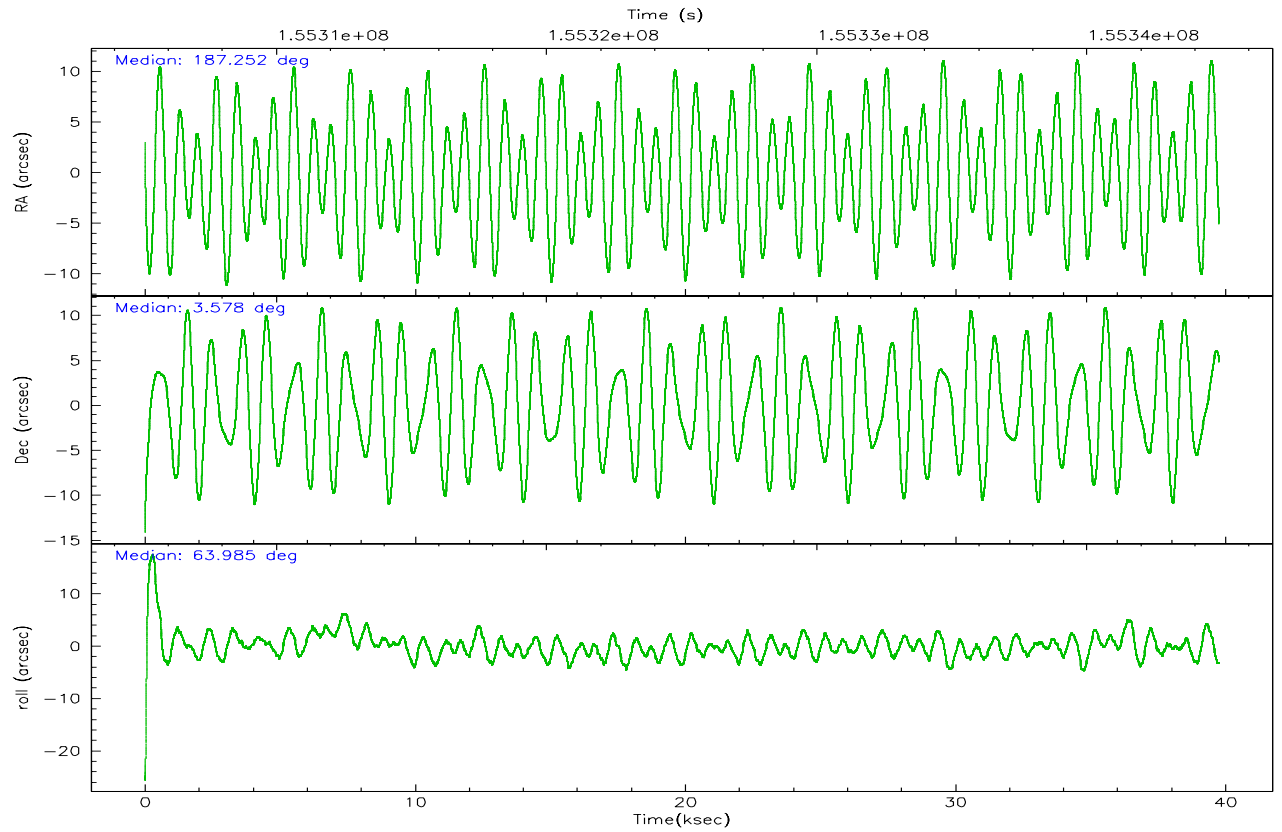
	ccd 2	ccd 3	ccd 5	ccd 6	ccd 7	ccd 8
grade 0 events	14406	13052	29797	13396	10284	21131
	5%	5%	7%	5%	3%	6%
grade 1 events	162	136	3174	122	191	191
	0%	0%	0%	0%	0%	0%
grade 2 events	5838	5337	52770	6234	33192	14153
	2%	2%	13%	2%	9%	4%
grade 3 events	2843	2812	3906	2910	7491	6813
	1%	1%	0%	1%	2%	2%
grade 4 events	2914	2851	3668	2871	7196	6411
	1%	1%	0%	1%	2%	2%
grade 5 events	9666	10702	18289	11272	22758	14527
	3%	4%	4%	4%	6%	4%
grade 6 events	4810	5024	93070	5833	77469	16748
	1%	2%	23%	2%	22%	5%
grade 7 events	215046	203686	186848	215447	182463	237786
	84%	83%	47%	83%	53%	74%

2.2 Compared Parameters

Parameter	Planned	Actual	Parameter	Planned	Actual
Instrument	ACIS	ACIS	Obspar format version number	6	6
Detector	ACIS-235678	ACIS-235678	Obspar file type	PREDICTED	ACTUAL
Grating	NONE	NONE	Obspar update status	NONE	UPDATED
Data mode	FAINT	FAINT	Number of optional ACIS chips dropped	0	0
Observation mode	POINTING	POINTING	On-chip summing requested	N	N
Pointing RA	187.254229	187.2519515783838	Subarray requested	NONE	NONE
Pointing Dec	3.551240	3.578359043720492	Alternating exposures requested	N	N
Pointing Roll	63.834416	63.99117769738954	Primary exposure time	0.000000	3.2
SIM focus pos (mm)	-0.684267	-0.6828225247311905			
SIM defocus (mm)	0	0.001444936568705701			
SIM translation stage pos (mm)	-190.132523	-190.1400660498719			
SIM translation stage offset (mm)	0	0.00754346686406393			
Observation start time	155305267.184000	155304207.05201			
Observation start date	2002-12-03T12:20:03	2002-12-03T12:03:27			
Observation end time	155344895.184000	155345209.10372			
Observation end date	2002-12-03T23:20:31	2002-12-03T23:26:49			
Read mode	TIMED	TIMED			

2.3 Aspect



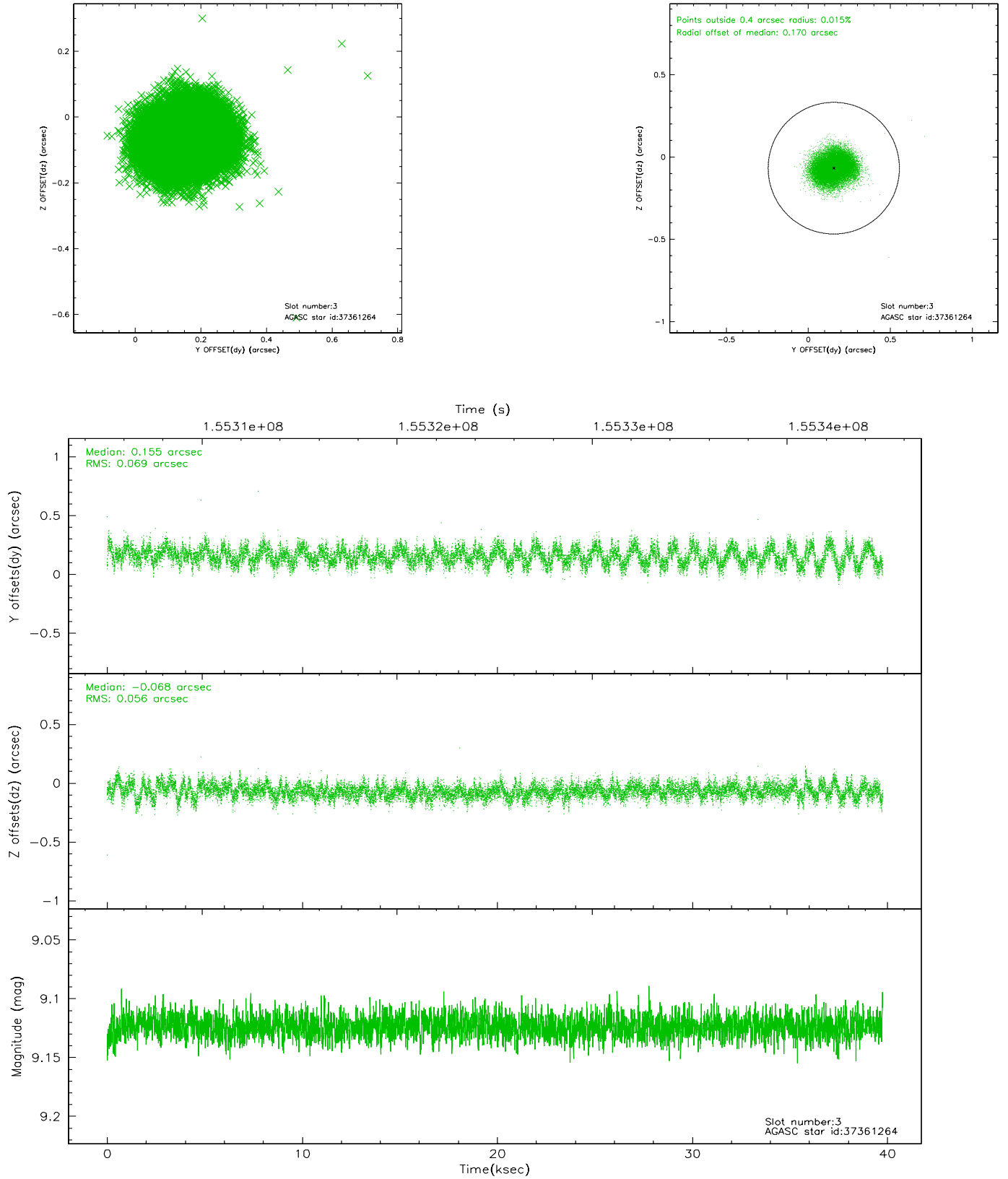


Slot Statistics

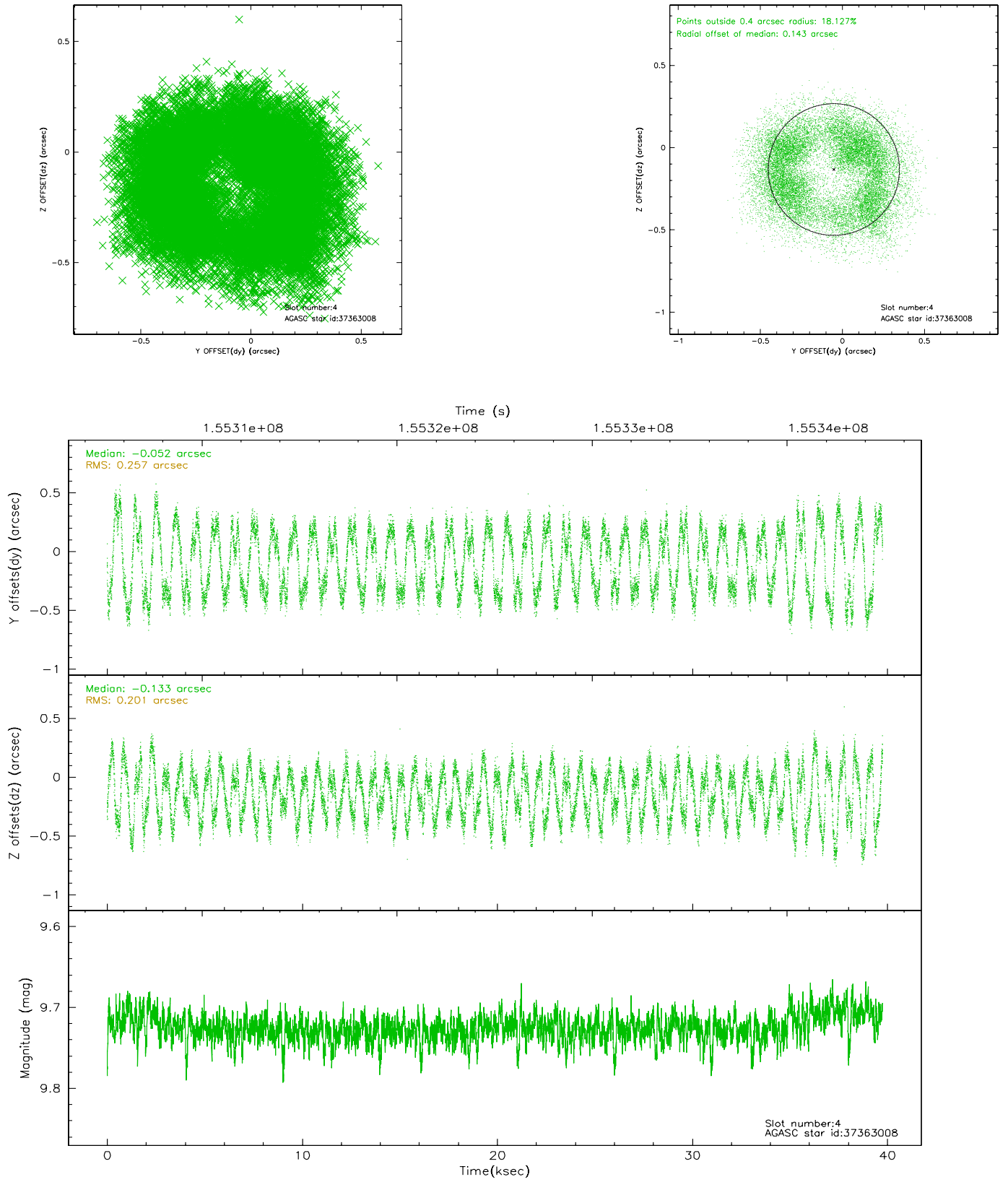
slot	status	id	mag	n_pts	med_dy	med_dz	dr1	dr2	ra	dec	mean_y	mean_z
0	FID	ACIS-S-2	7.11	9697	-0.013	0.014	0.009	0.015	0.000000	0.000000	-755.57	-1730.03
1	FID	ACIS-S-4	7.20	9696	-0.038	0.002	0.013	0.025	0.000000	0.000000	2157.67	178.42
2	FID	ACIS-S-5	7.24	9697	0.020	-0.007	0.009	0.015	0.000000	0.000000	-1808.36	172.10
3	GUIDE	37361264	9.12	19381	0.155	-0.068	0.097	0.147	187.071456	3.270817	-1196.17	144.67
4	GUIDE	37363008	9.73	19385	-0.052	-0.133	0.353	0.488	187.186016	4.024063	1418.73	970.90
5	GUIDE	37363176	10.08	19377	0.201	0.109	0.206	0.329	187.349750	3.163657	-1101.17	-923.04
6	GUIDE	37357392	8.19	19393	-0.094	0.005	0.109	0.155	187.068134	3.697099	175.67	832.00
7	GUIDE	38279600	9.12	19383	-0.179	0.116	0.113	0.180	188.016310	3.893520	2313.48	-1911.92

2.4 Star Slots

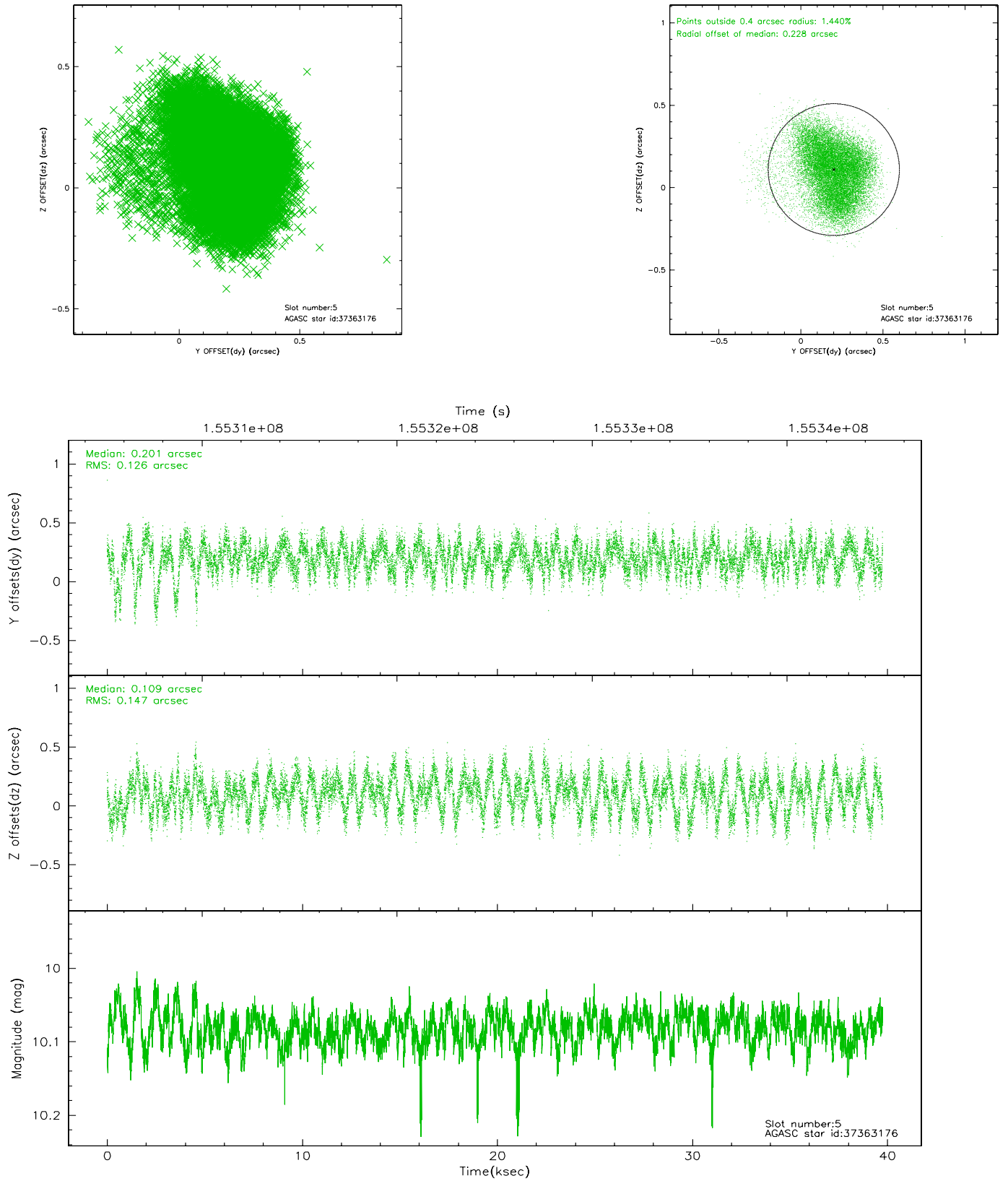
2.4.1 Slot 3



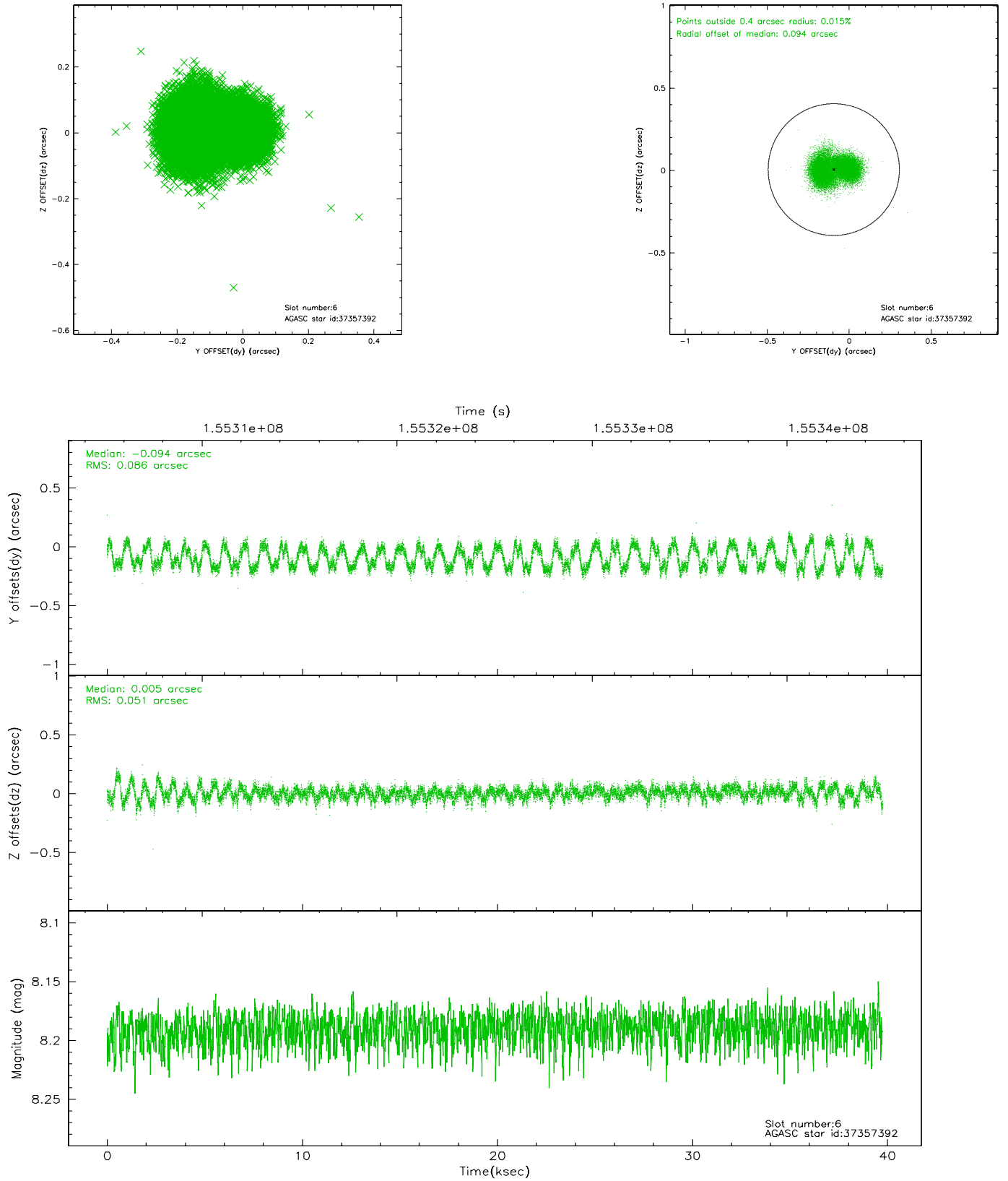
2.4.2 Slot 4



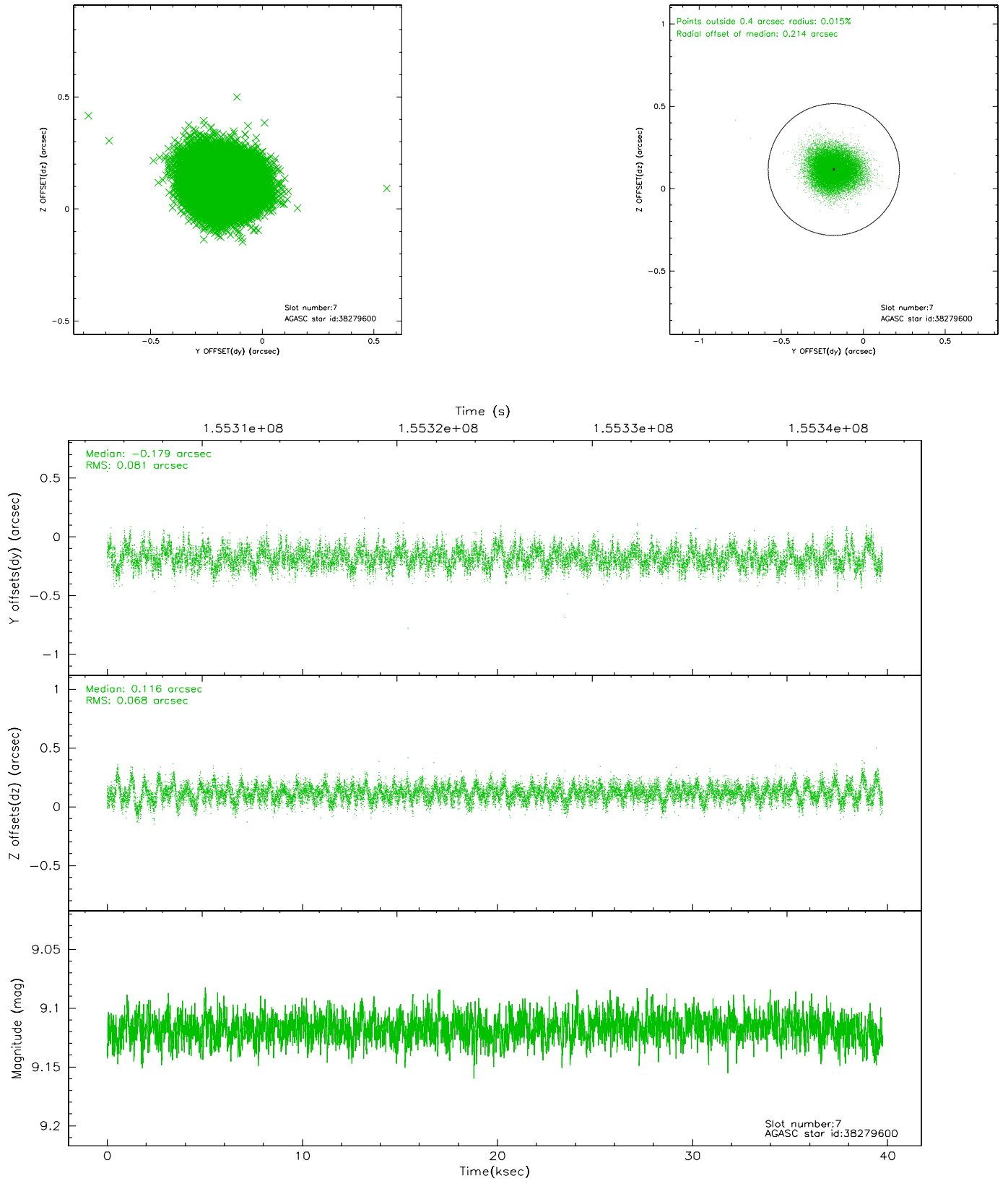
2.4.3 Slot 5



2.4.4 Slot 6

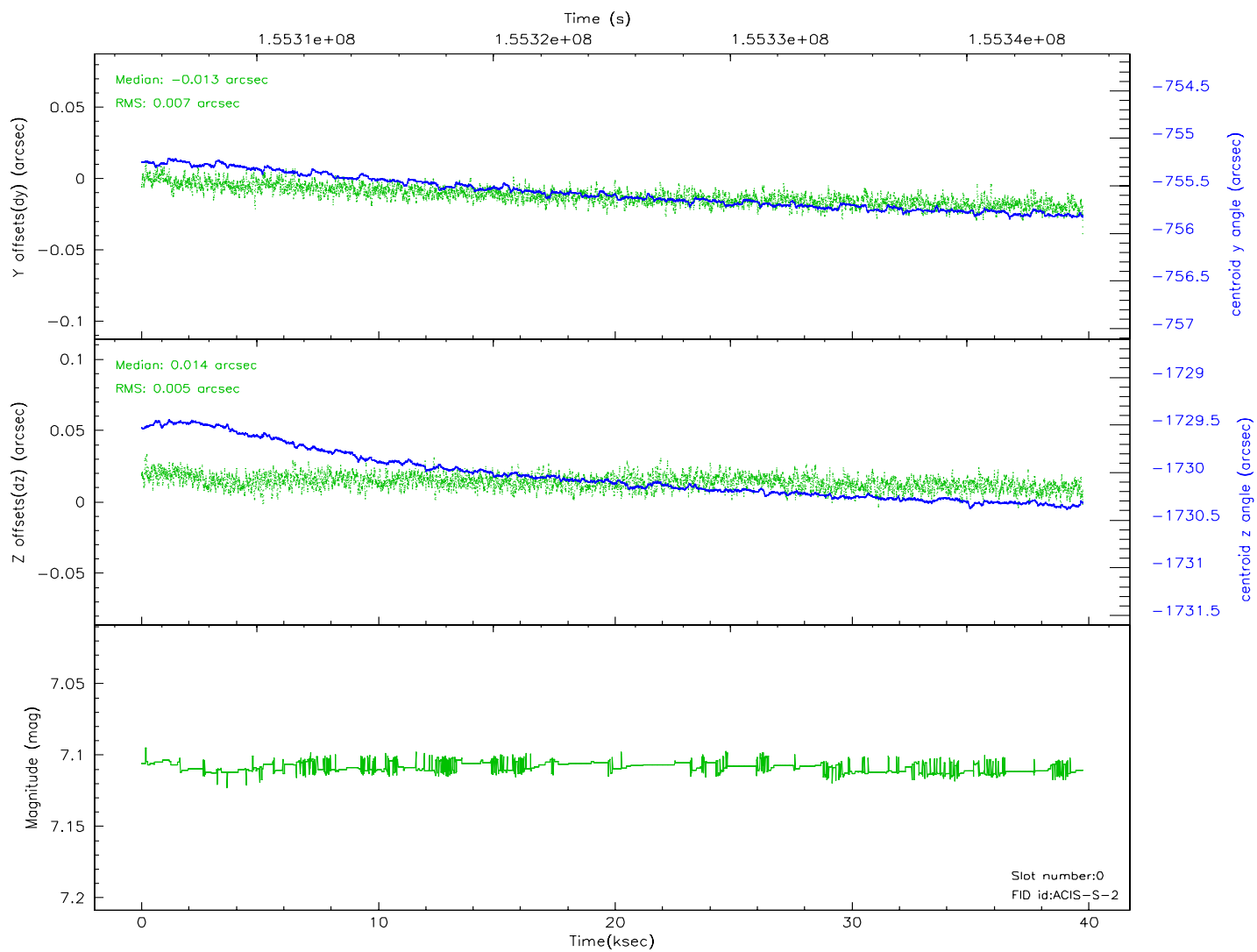
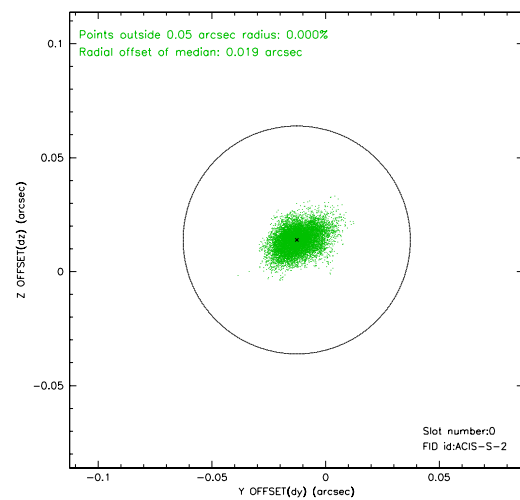
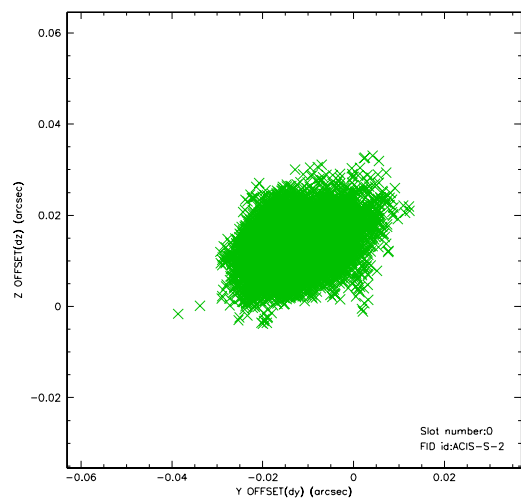


2.4.5 Slot 7

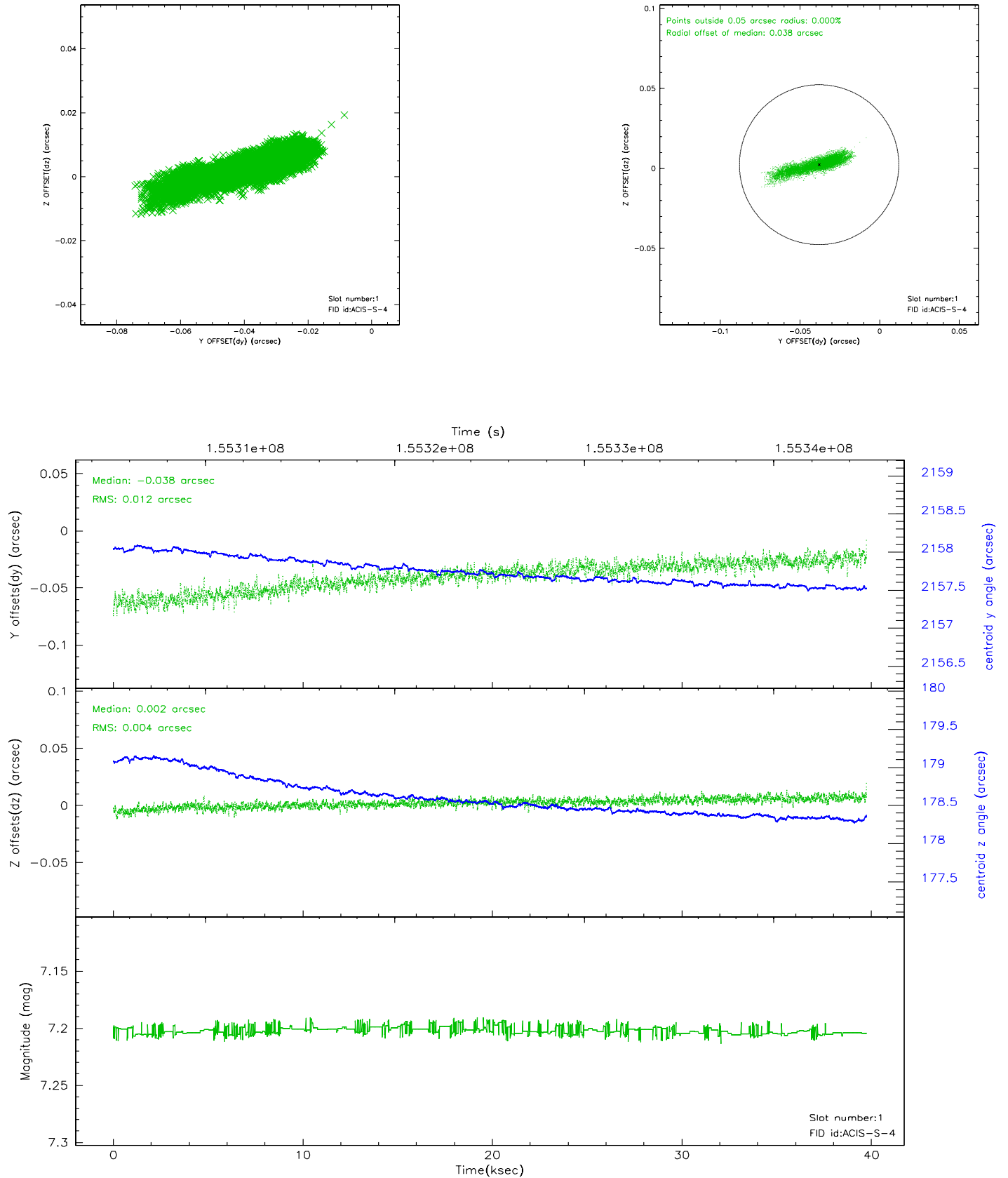


2.5 FID Slots

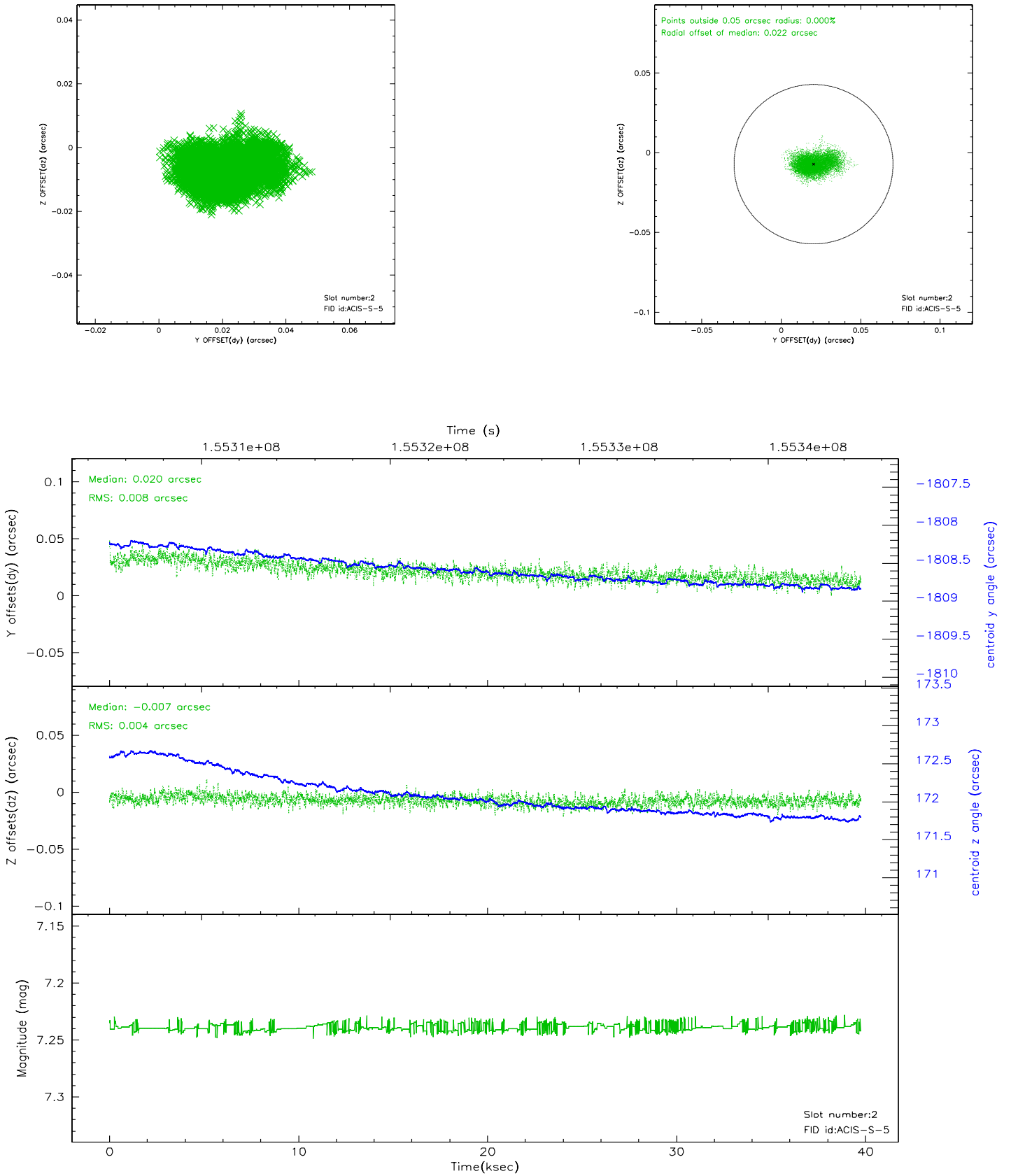
2.5.1 Slot 0



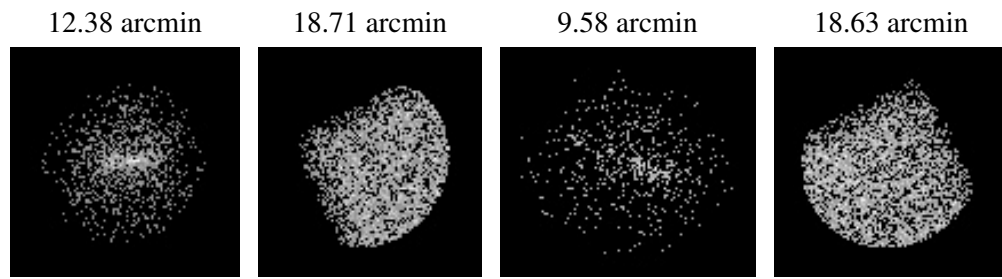
2.5.2 Slot 1



2.5.3 Slot 2



3 Point Sources



A Summary

A.1 Status

V&V Scientist	Beth Sundheim
V&V Date (YYYY-MM-DD)	2006.10.15
V&V Edition	1
V&V Disposition and Status	OK
V&V Charge Time	39.385

A.2 Comments