

V&V Reference Report

L2 ASCDS Version : 7.6.9

Observation 3142 - L2 Version 001
Chandra X-Ray Center

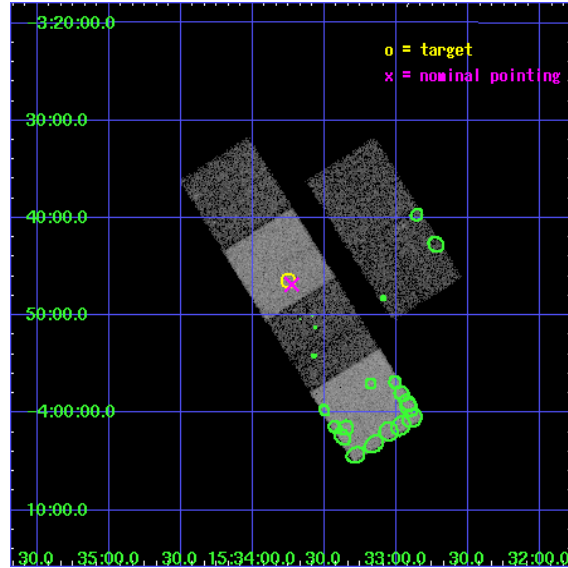
L2 Processing Date : Sep 19 2006

Contents

| | | |
|----------|-------------------------------|-----------|
| 1 | Front | 2 |
| 2 | OBI | 3 |
| 2.1 | OBI | 3 |
| 2.1.1 | Images | 3 |
| 2.1.2 | Bias | 3 |
| 2.1.3 | Parameters | 4 |
| 2.1.4 | Events | 4 |
| 2.2 | Compared Parameters | 5 |
| 2.3 | Aspect | 6 |
| 2.4 | Star Slots | 9 |
| 2.4.1 | Slot 3 | 9 |
| 2.4.2 | Slot 4 | 10 |
| 2.4.3 | Slot 5 | 11 |
| 2.4.4 | Slot 6 | 12 |
| 2.4.5 | Slot 7 | 13 |
| 2.5 | FID Slots | 14 |
| 2.5.1 | Slot 0 | 14 |
| 2.5.2 | Slot 1 | 15 |
| 2.5.3 | Slot 2 | 16 |
| 3 | Point Sources | 17 |
| A | Summary | 18 |
| A.1 | Status | 18 |
| A.2 | Comments | 18 |

1 Front

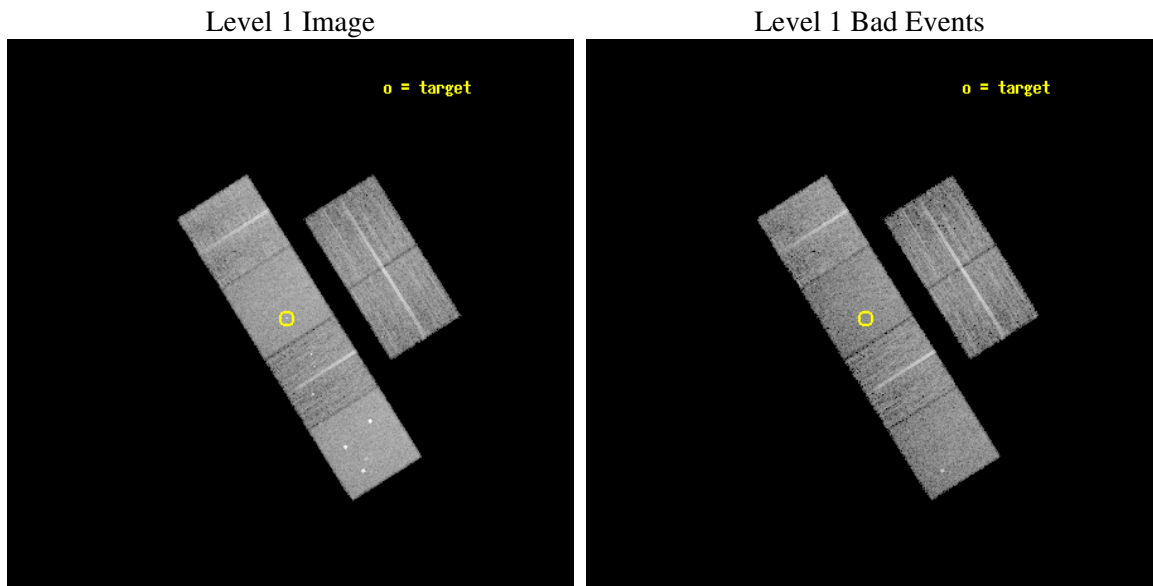
| | |
|----------|---|
| seq_num | 700581 |
| obs_id | 3142 |
| title | PROBING THE X-RAY EMISSION OF HIGH LUMINOSITY EMISSION LINE GALAXIES: QUASAR-2s AND THE STARBURST-AGN CONNECTION |
| observer | Prof. Paolo Coppi |
| object | QUEST 1533-0346 |
| dtcycle | 0 |
| cycle | P |
| ra_targ | 233.438333 |
| dec_targ | -3.7735 |
| ra_nom | 233.43182246884 |
| dec_nom | -3.7806303984309 |
| roll_nom | 237.87534325494 |
| revision | 2 |
| ontime | 9961.5999628901 |
| livetime | 9835.4601860047 |
| ontime2 | 9961.5999628901 |
| ontime3 | 9961.5999628901 |
| ontime5 | 9961.5999628901 |
| ontime6 | 9961.5999628901 |
| ontime7 | 9961.5999628901 |
| ontime8 | 9961.5999628901 |
| l2events | 95434 |



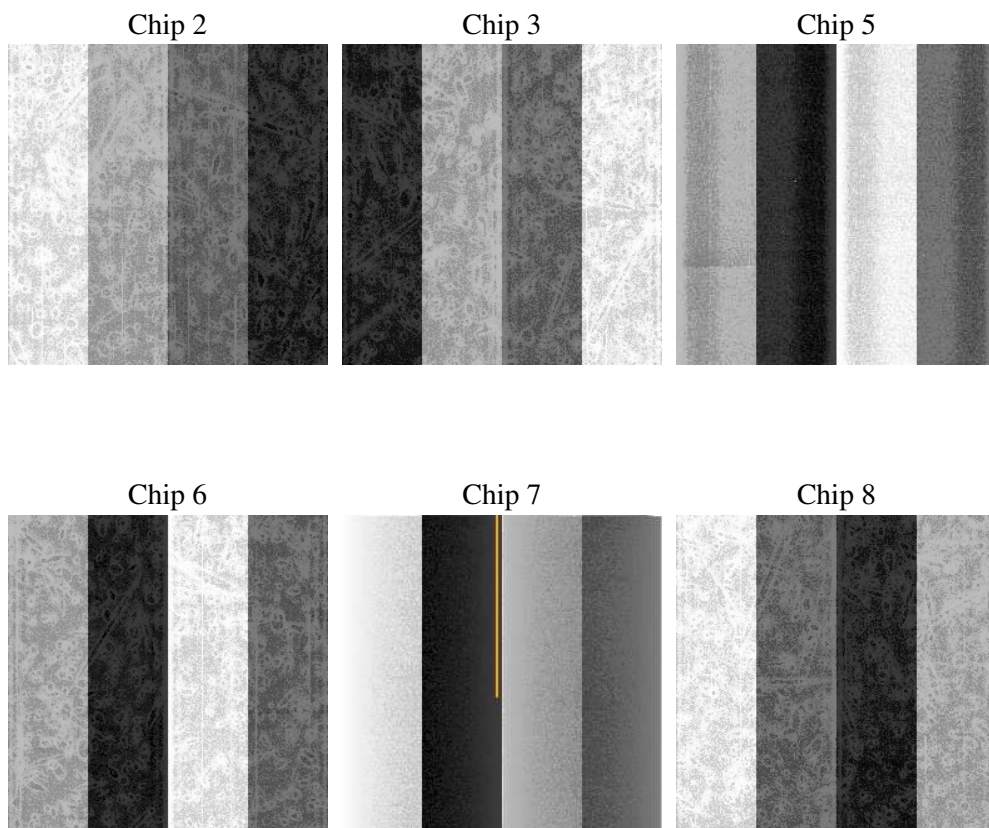
2 OBI

2.1 OBI

2.1.1 Images



2.1.2 Bias



2.1.3 Parameters

| | |
|----------|---------------------|
| obi_num | 1 |
| ascdsver | 7.6.9 |
| caldsver | 3.2.3 |
| date | 2006-09-19T15:59:08 |
| revision | 2 |

| | |
|----------------|-----------------|
| sched_exp_time | 10000.000000 |
| ontime | 9966.0897479355 |
| ontime2 | 9966.0897280276 |
| ontime3 | 9966.0897280276 |
| ontime5 | 9966.0897479355 |
| ontime6 | 9966.0897280276 |
| ontime7 | 9966.0897479355 |
| ontime8 | 9966.0897479355 |
| l1events | 449099 |

2.1.4 Events

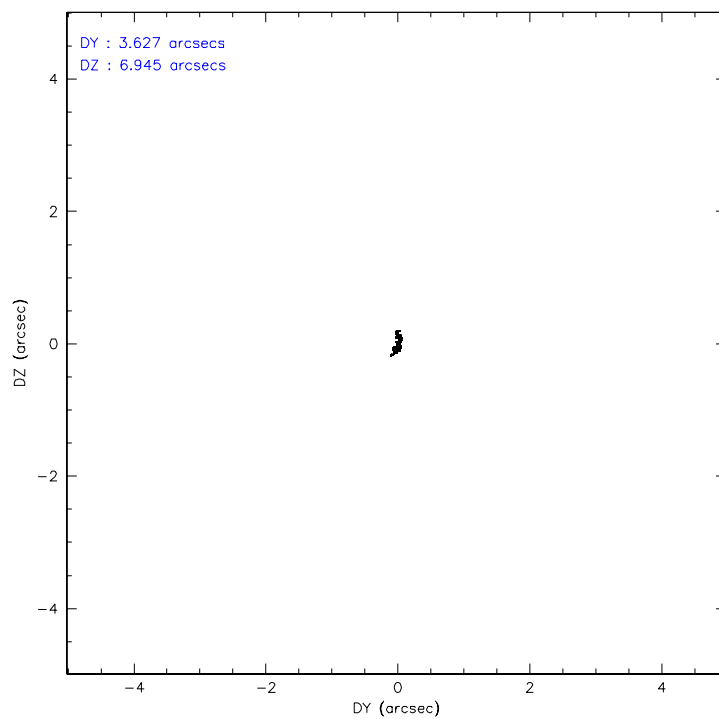
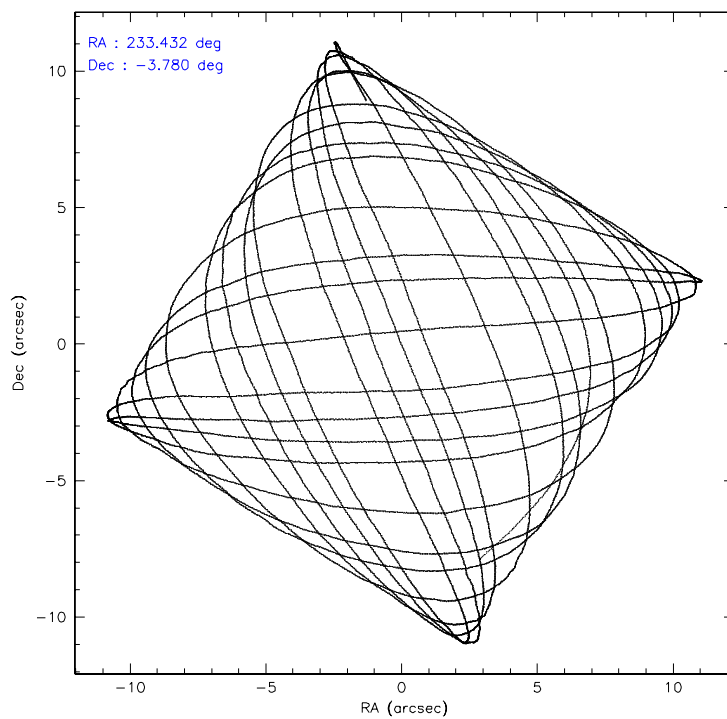
| | ccd 2 | ccd 3 | ccd 5 | ccd 6 | ccd 7 | ccd 8 |
|-----------------|-------|-------|-------|-------|-------|-------|
| level 1 events | 66275 | 62181 | 92741 | 64908 | 82797 | 80197 |
| rejected events | 58807 | 55059 | 50913 | 56792 | 51209 | 64325 |
| rejected % | 88% | 88% | 54% | 87% | 61% | 80% |

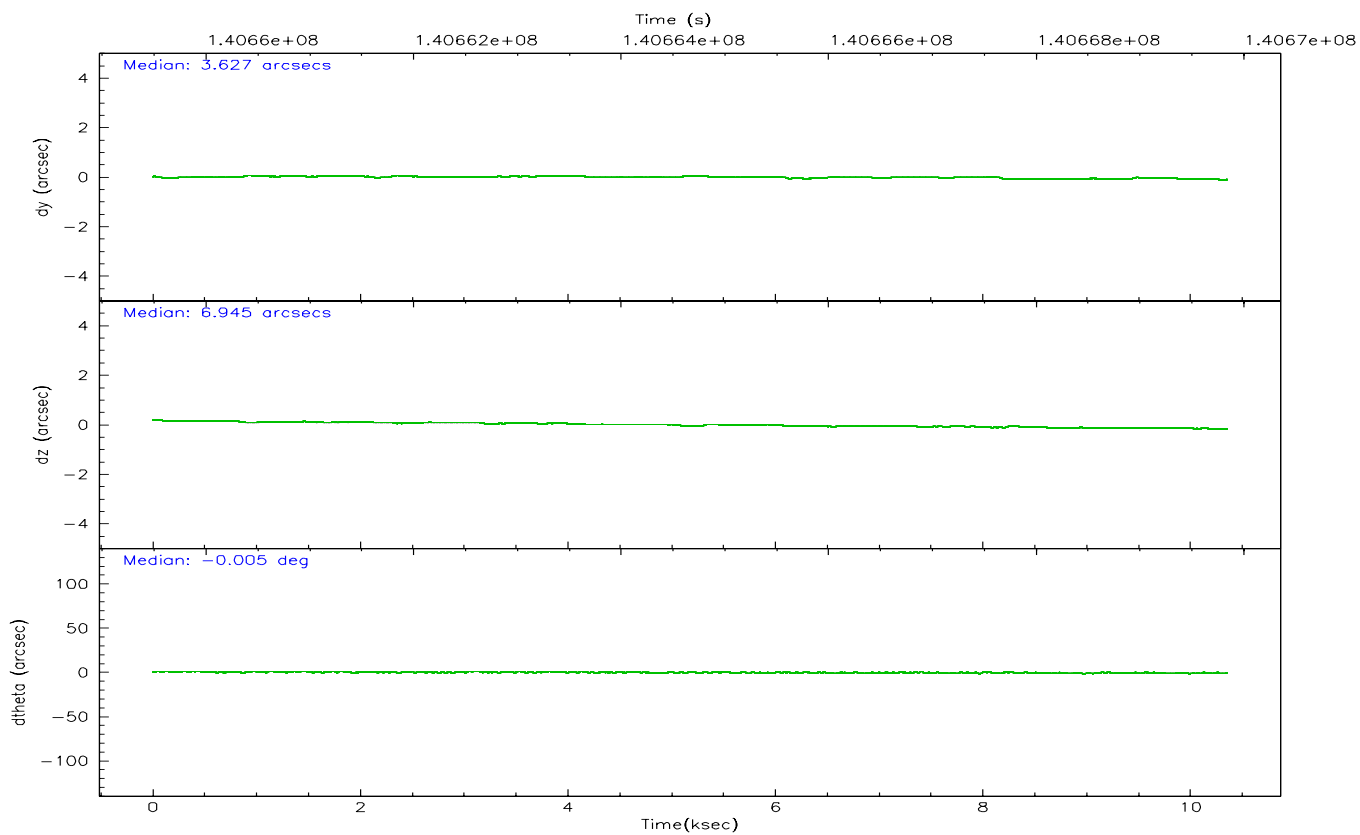
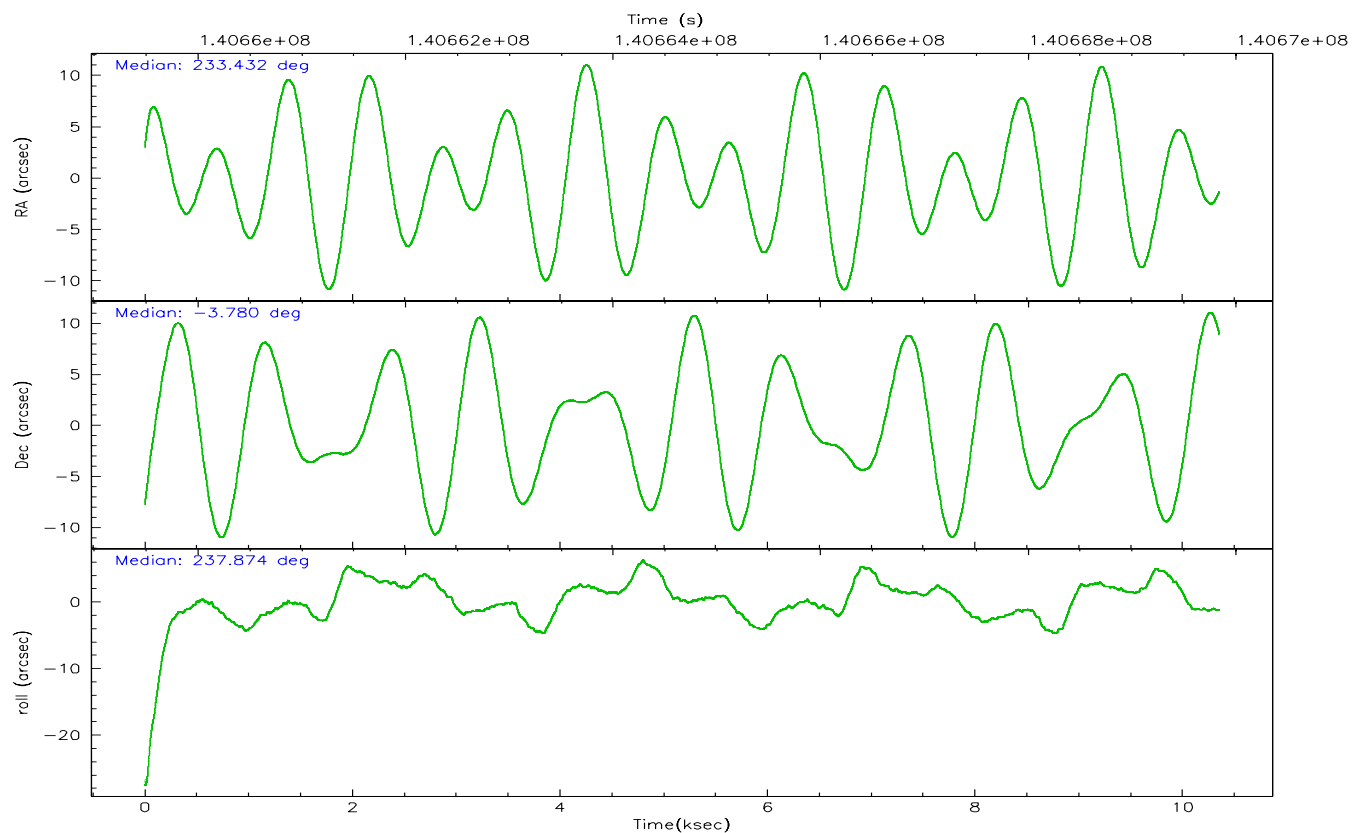
| | ccd 2 | ccd 3 | ccd 5 | ccd 6 | ccd 7 | ccd 8 |
|----------------|-------|-------|-------|-------|-------|-------|
| grade 0 events | 3161 | 3018 | 5067 | 3624 | 1901 | 5000 |
| | 4% | 4% | 5% | 5% | 2% | 6% |
| grade 1 events | 26 | 24 | 246 | 32 | 58 | 47 |
| | 0% | 0% | 0% | 0% | 0% | 0% |
| grade 2 events | 1629 | 1386 | 12271 | 1597 | 7829 | 3584 |
| | 2% | 2% | 13% | 2% | 9% | 4% |
| grade 3 events | 687 | 732 | 1039 | 716 | 1604 | 1589 |
| | 1% | 1% | 1% | 1% | 1% | 1% |
| grade 4 events | 680 | 671 | 934 | 688 | 1571 | 1502 |
| | 1% | 1% | 1% | 1% | 1% | 1% |
| grade 5 events | 2229 | 2639 | 4566 | 2812 | 5450 | 3688 |
| | 3% | 4% | 4% | 4% | 6% | 4% |
| grade 6 events | 1314 | 1318 | 22539 | 1497 | 18700 | 4204 |
| | 1% | 2% | 24% | 2% | 22% | 5% |
| grade 7 events | 56549 | 52393 | 46079 | 53942 | 45684 | 60583 |
| | 85% | 84% | 49% | 83% | 55% | 75% |

2.2 Compared Parameters

| Parameter | Planned | Actual | Parameter | Planned | Actual |
|-----------------------------------|---------------------|----------------------|---------------------------------------|-----------|---------|
| Instrument | ACIS | ACIS | Obspar format version number | 6 | 6 |
| Detector | ACIS-235678 | ACIS-235678 | Obspar file type | PREDICTED | ACTUAL |
| Grating | NONE | NONE | Obspar update status | NONE | UPDATED |
| Data mode | FAINT | FAINT | Number of optional ACIS chips dropped | 0 | 0 |
| Observation mode | POINTING | POINTING | On-chip summing requested | N | N |
| Pointing RA | 233.432465 | 233.4318224688394 | Subarray requested | NONE | NONE |
| Pointing Dec | -3.753439 | -3.780630398430882 | Alternating exposures requested | N | N |
| Pointing Roll | 237.718760 | 237.8753432549357 | Primary exposure time | 0.000000 | 3.2 |
| SIM focus pos (mm) | -0.684267 | -0.6828225247311905 | | | |
| SIM defocus (mm) | 0 | 0.001444936568705701 | | | |
| SIM translation stage pos (mm) | -190.132523 | -190.1400660498719 | | | |
| SIM translation stage offset (mm) | 0 | 0.00754346686406393 | | | |
| Observation start time | 140659840.184000 | 140658799.9094 | | | |
| Observation start date | 2002-06-17T00:09:36 | 2002-06-16T23:53:19 | | | |
| Observation end time | 140669840.184000 | 140670766.78489 | | | |
| Observation end date | 2002-06-17T02:56:16 | 2002-06-17T03:12:46 | | | |
| Read mode | TIMED | TIMED | | | |

2.3 Aspect



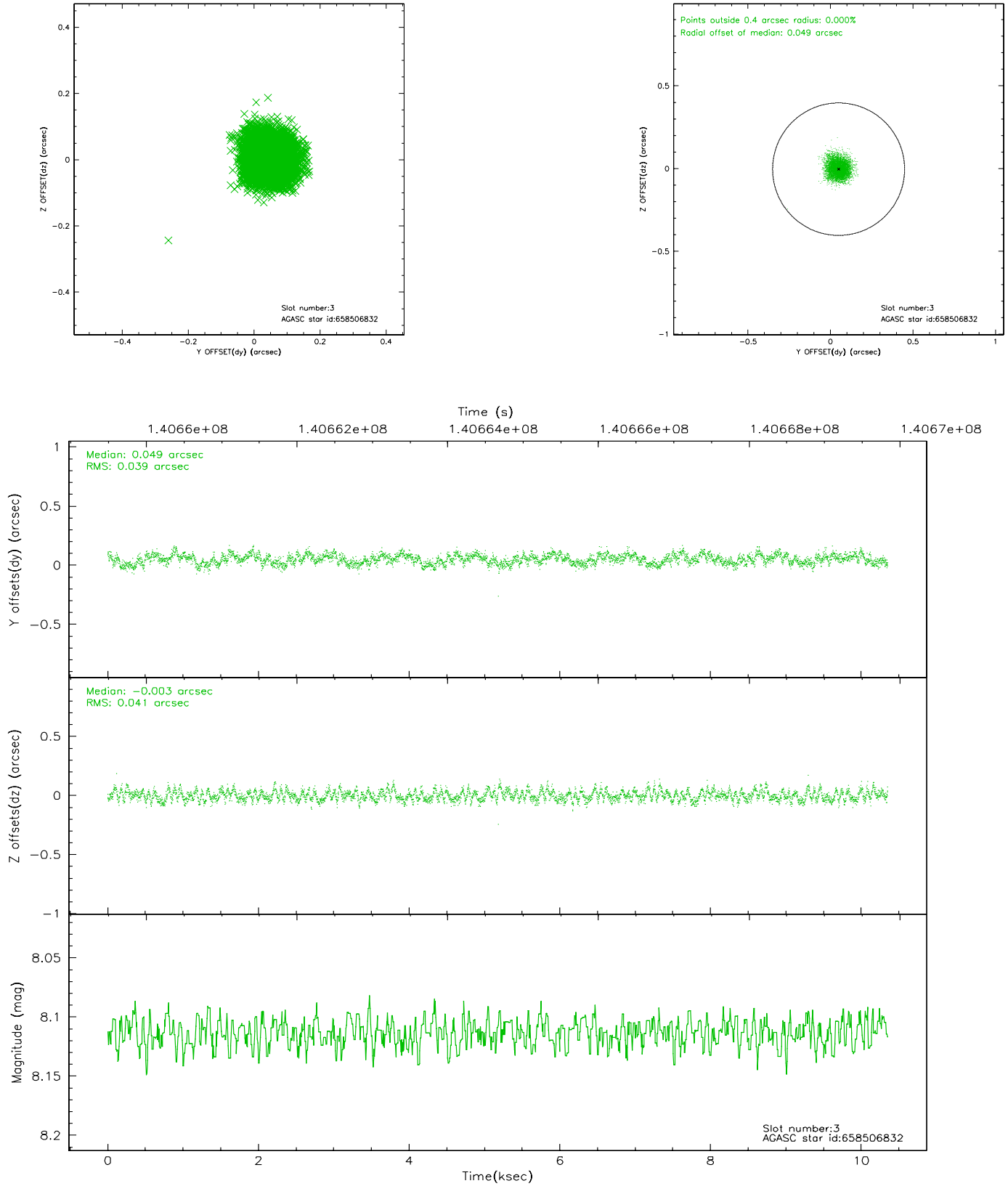


Slot Statistics

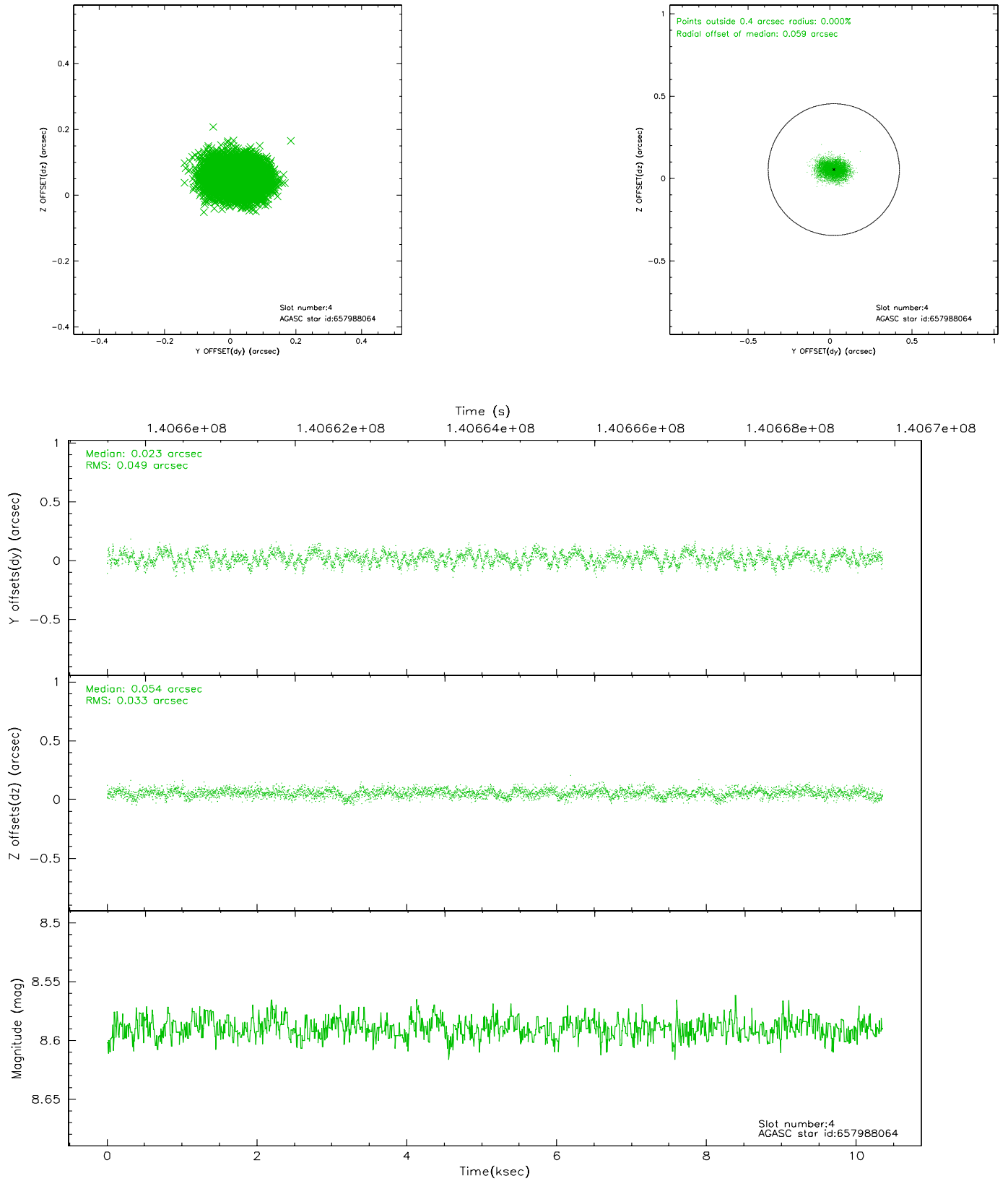
| slot | status | id | mag | n_pts | med_dy | med_dz | dr1 | dr2 | ra | dec | mean_y | mean_z |
|------|--------|-----------|------|-------|--------|--------|-------|-------|------------|-----------|----------|----------|
| 0 | FID | ACIS-S-2 | 7.11 | 2525 | -0.002 | 0.029 | 0.007 | 0.011 | 0.000000 | 0.000000 | -756.26 | -1728.09 |
| 1 | FID | ACIS-S-4 | 7.20 | 2525 | -0.039 | -0.007 | 0.005 | 0.009 | 0.000000 | 0.000000 | 2156.73 | 179.87 |
| 2 | FID | ACIS-S-5 | 7.24 | 2525 | 0.010 | -0.014 | 0.007 | 0.011 | 0.000000 | 0.000000 | -1808.46 | 174.07 |
| 3 | GUIDE | 658506832 | 8.11 | 5050 | 0.049 | -0.003 | 0.061 | 0.096 | 233.565199 | -4.359821 | 1591.77 | 1569.55 |
| 4 | GUIDE | 657988064 | 8.59 | 5050 | 0.023 | 0.054 | 0.063 | 0.101 | 233.924361 | -3.487544 | -1751.91 | 984.36 |
| 5 | GUIDE | 657986208 | 9.11 | 5047 | 0.000 | -0.015 | 0.075 | 0.120 | 233.173721 | -3.464094 | -383.63 | -1341.50 |
| 6 | GUIDE | 657983664 | 8.59 | 5049 | -0.027 | -0.073 | 0.055 | 0.090 | 233.769945 | -3.322472 | -1958.52 | 197.16 |
| 7 | GUIDE | 658510208 | 9.59 | 5043 | -0.042 | 0.041 | 0.102 | 0.166 | 232.852613 | -4.123136 | 2237.98 | -1048.34 |

2.4 Star Slots

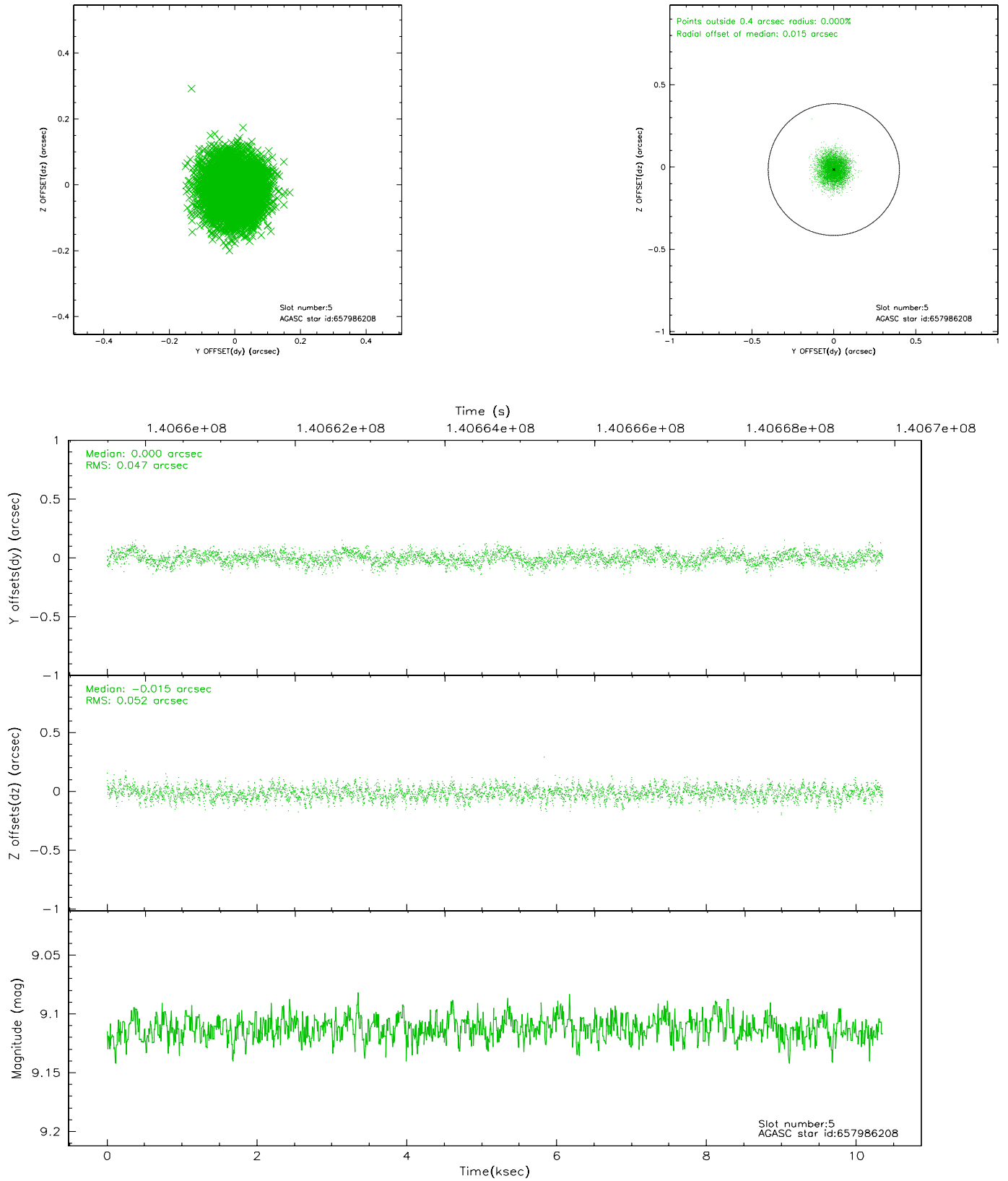
2.4.1 Slot 3



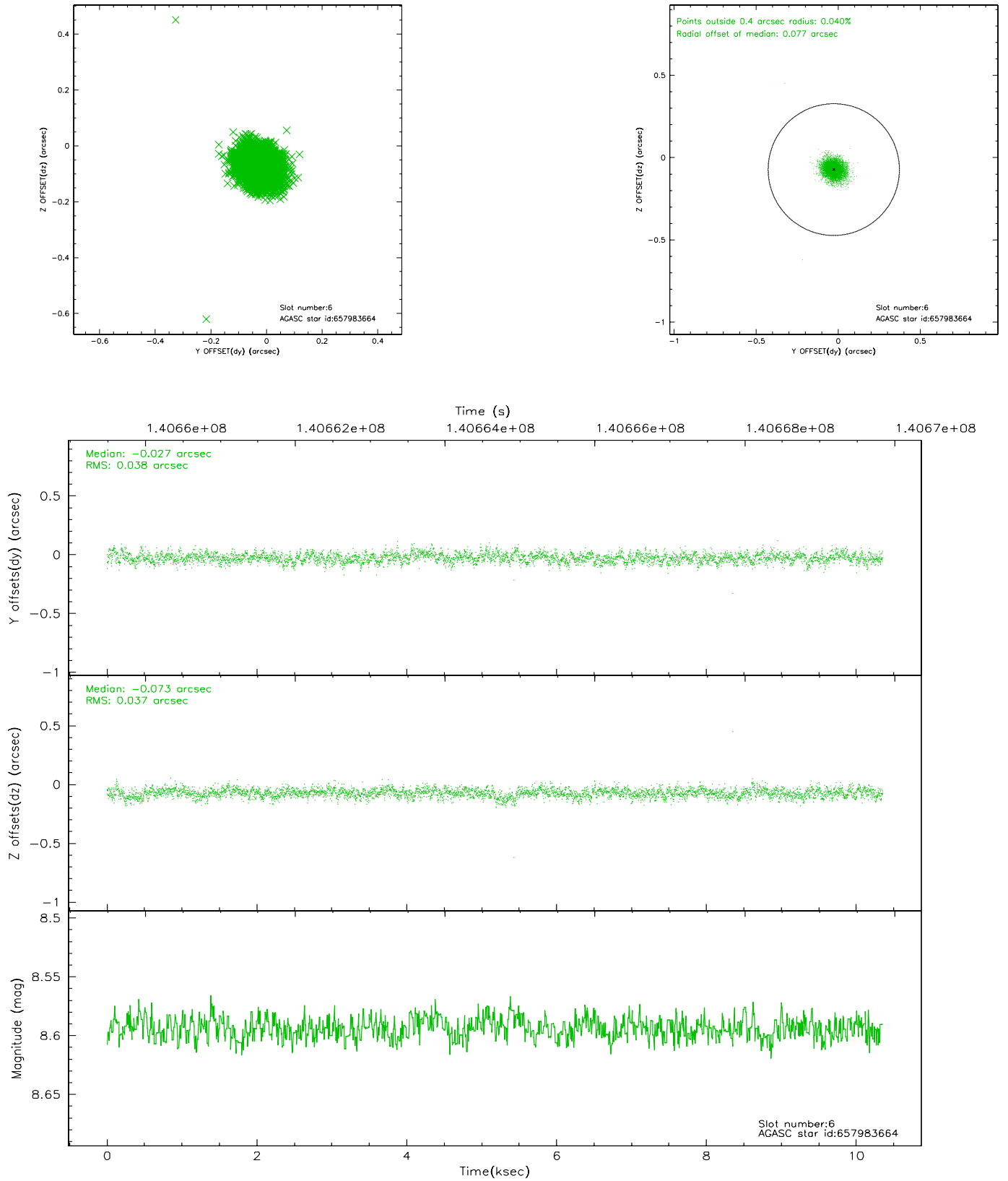
2.4.2 Slot 4



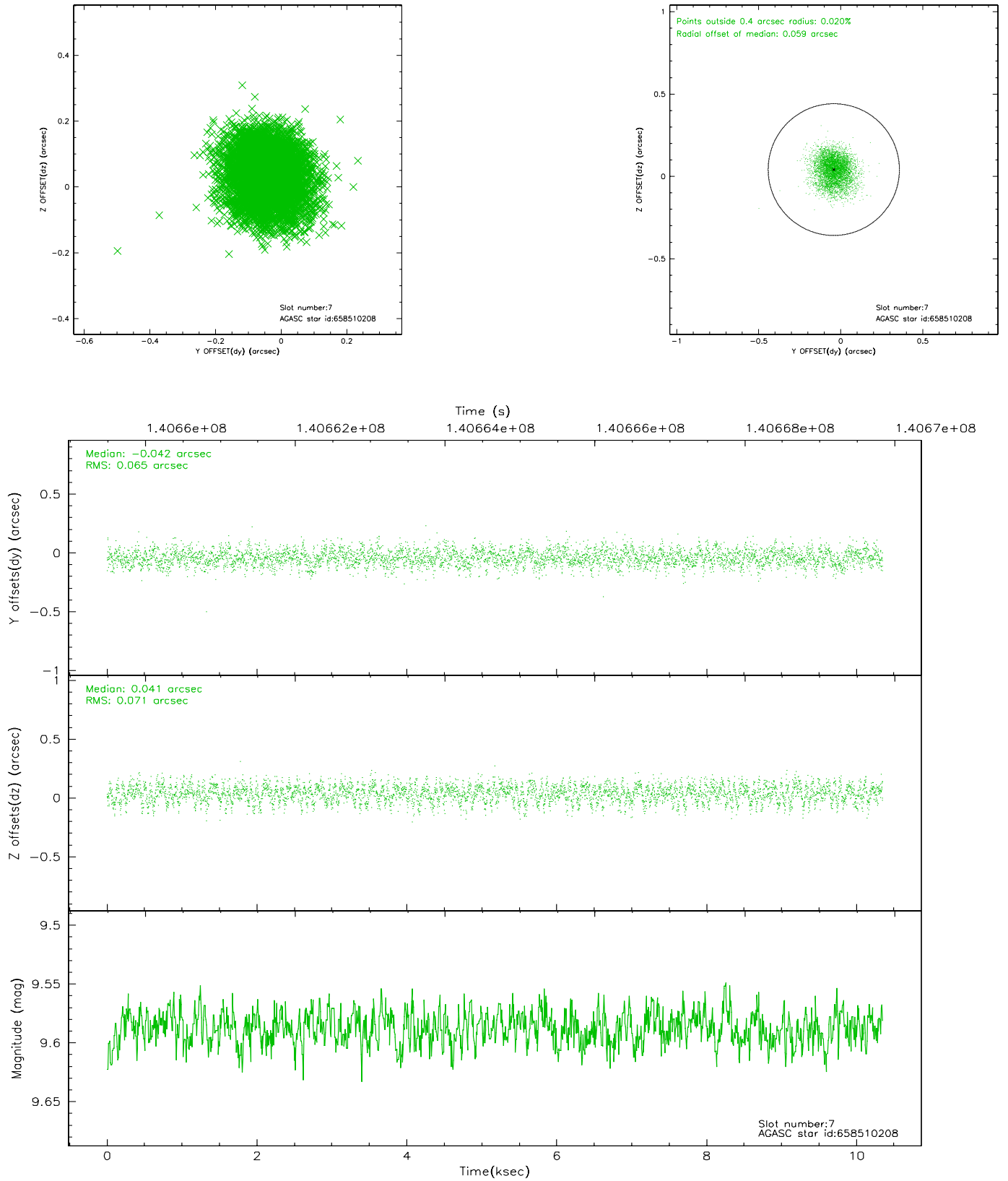
2.4.3 Slot 5



2.4.4 Slot 6

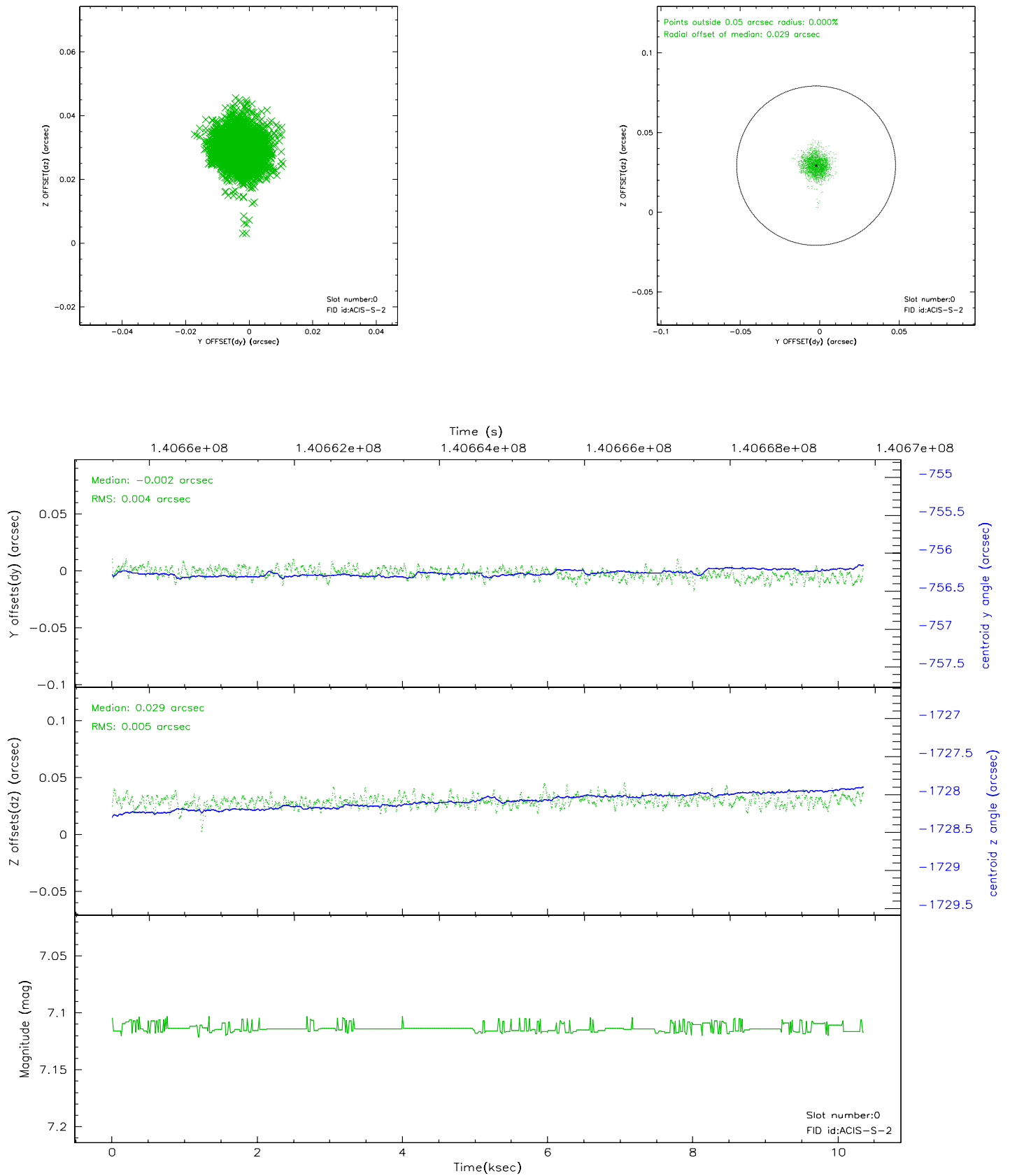


2.4.5 Slot 7

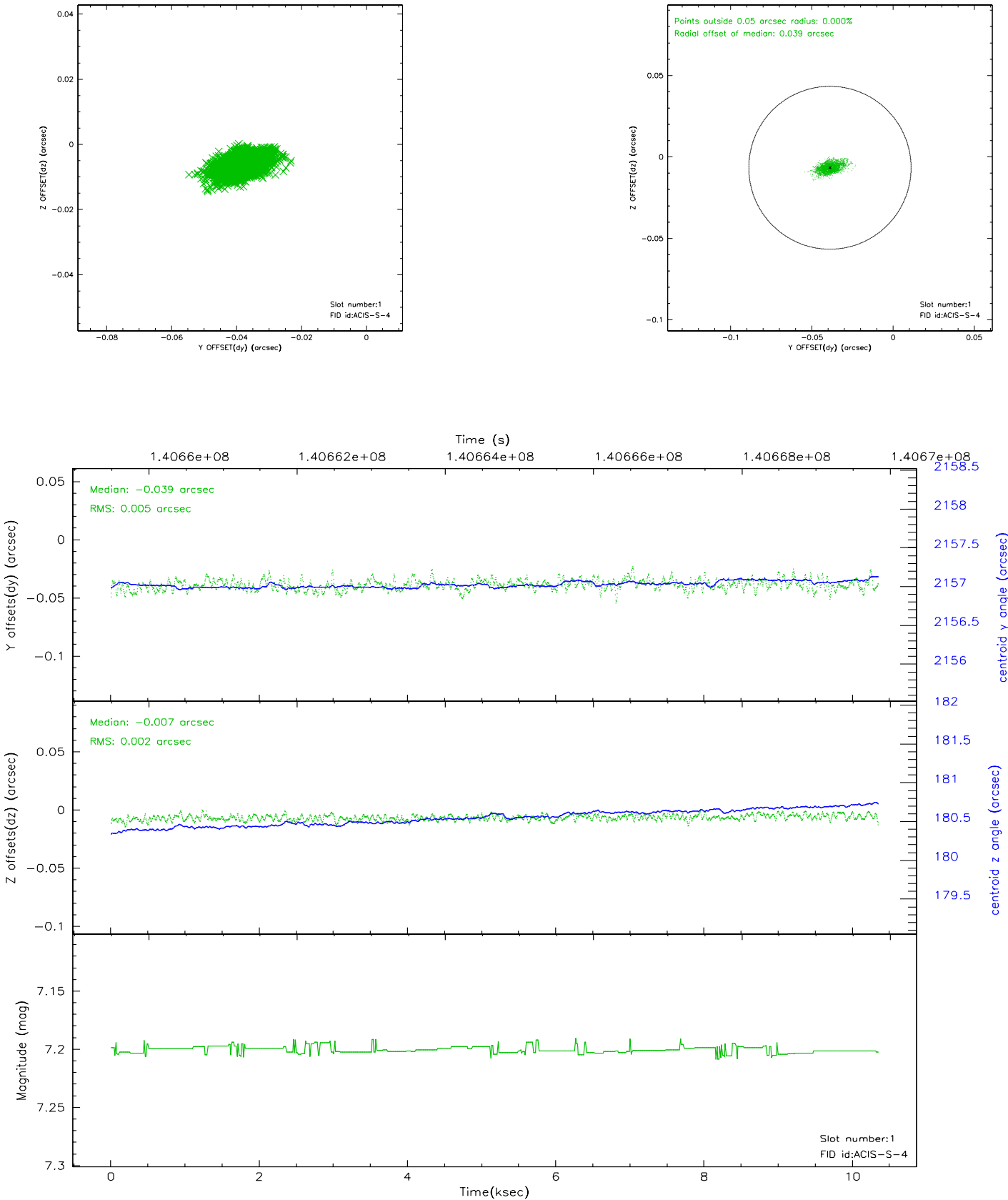


2.5 FID Slots

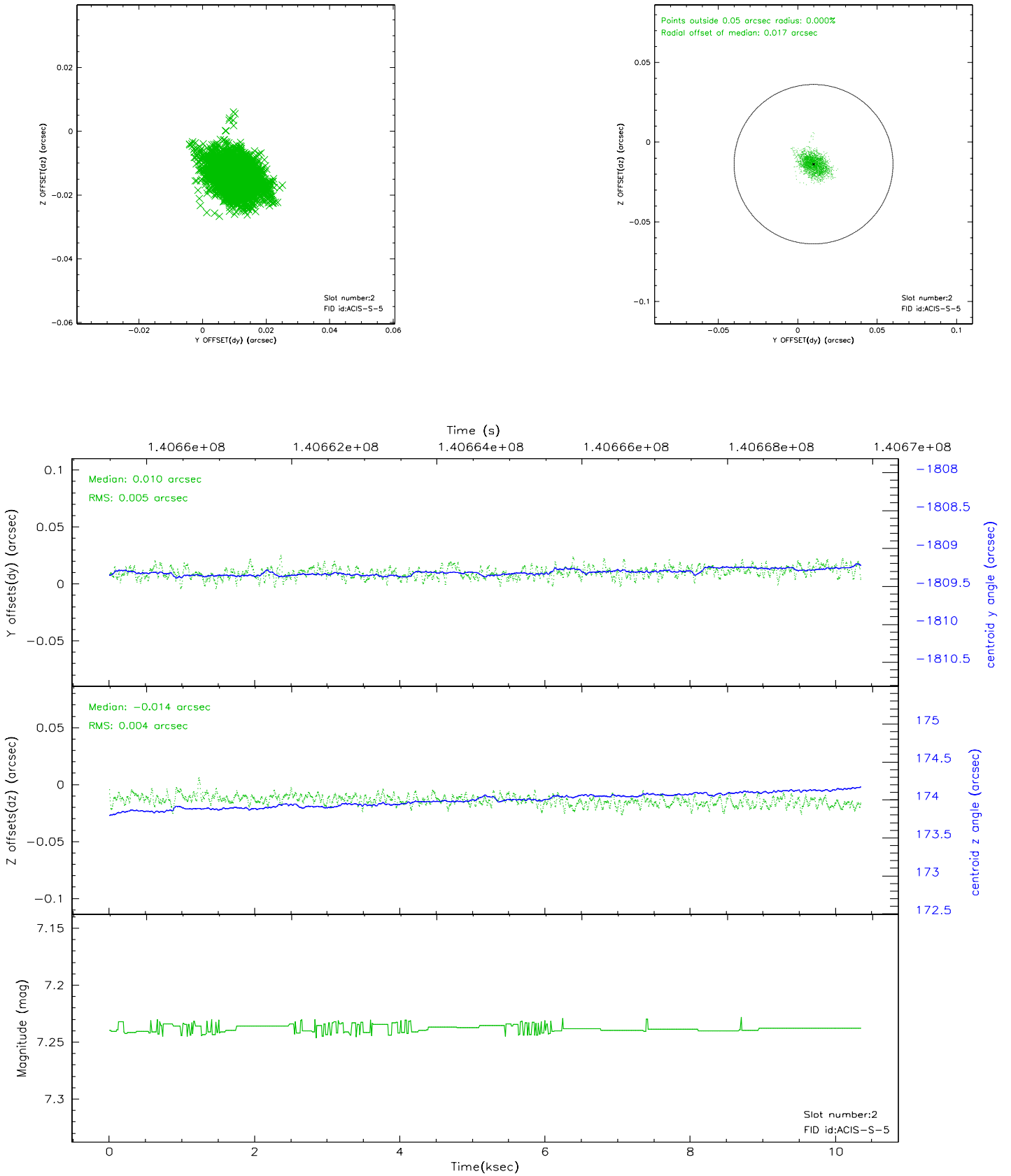
2.5.1 Slot 0



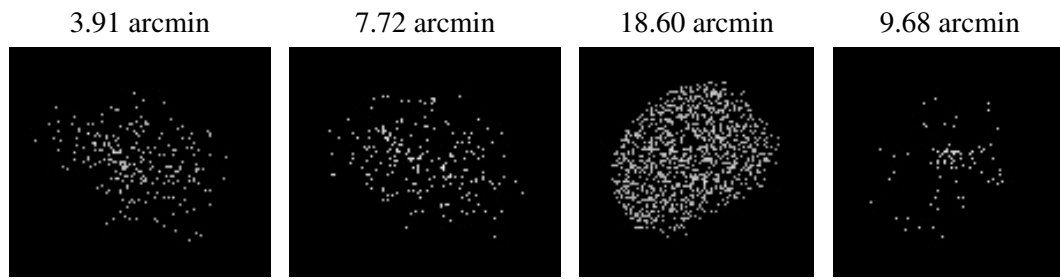
2.5.2 Slot 1



2.5.3 Slot 2



3 Point Sources



A Summary

A.1 Status

| | |
|----------------------------|------------|
| V&V Scientist | Jen Lauer |
| V&V Date (YYYY-MM-DD) | 2006.09.19 |
| V&V Edition | 1 |
| V&V Disposition and Status | OK |
| V&V Charge Time | 9.964 |

A.2 Comments