

# V&V Reference Report

## L2 ASCDS Version : 7.6.9

Observation 3141 - L2 Version 002  
Chandra X-Ray Center

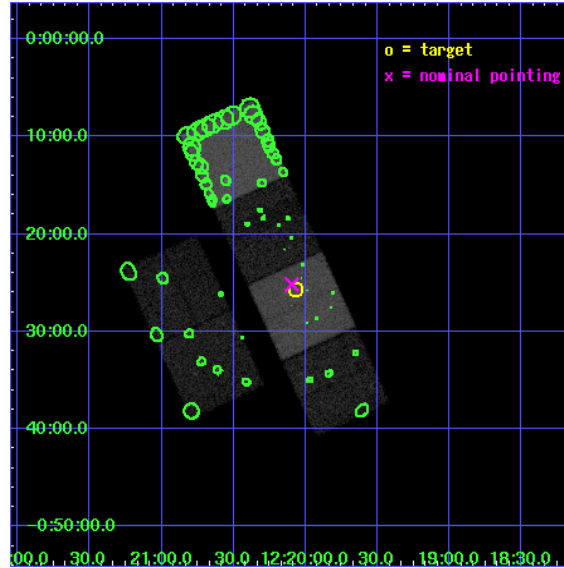
L2 Processing Date : Nov 30 2006

## Contents

<b>1</b>	<b>Front</b>	<b>2</b>
<b>2</b>	<b>OBI</b>	<b>3</b>
2.1	OBI . . . . .	3
2.1.1	Images . . . . .	3
2.1.2	Bias . . . . .	3
2.1.3	Parameters . . . . .	4
2.1.4	Events . . . . .	4
2.2	Compared Parameters . . . . .	5
2.3	Aspect . . . . .	6
2.4	Star Slots . . . . .	9
2.4.1	Slot 3 . . . . .	9
2.4.2	Slot 4 . . . . .	10
2.4.3	Slot 5 . . . . .	11
2.4.4	Slot 6 . . . . .	12
2.4.5	Slot 7 . . . . .	13
2.5	FID Slots . . . . .	14
2.5.1	Slot 0 . . . . .	14
2.5.2	Slot 1 . . . . .	15
2.5.3	Slot 2 . . . . .	16
<b>3</b>	<b>Point Sources</b>	<b>17</b>
<b>A</b>	<b>Summary</b>	<b>18</b>
A.1	Status . . . . .	18
A.2	Comments . . . . .	18

# 1 Front

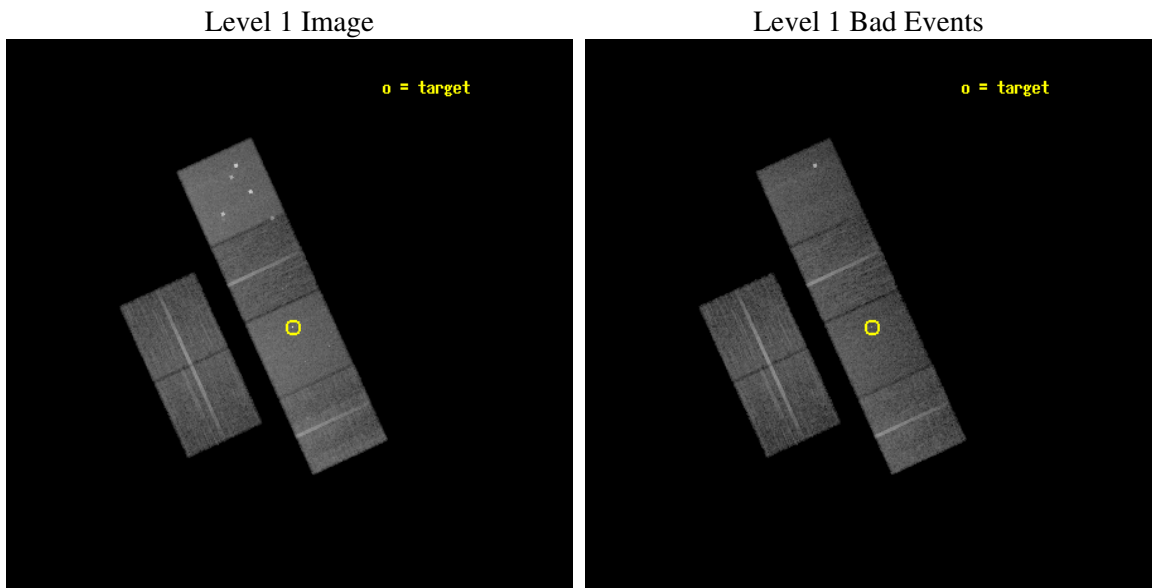
seq_num	700580
obs_id	3141
title	PROBING THE X-RAY EMISSION OF HIGH LUMINOSITY EMISSION LINE GALAXIES: QUASAR-2s AND THE STARBURST-AGN CONNECTION
observer	Prof. Paolo Coppi
object	QUEST 1220-0025
dtcycle	0
cycle	P
ra_targ	185.018333
dec_targ	-0.4275
ra_nom	185.02387335404
dec_nom	-0.41954235677666
roll_nom	65.415567525785
revision	3
ontime	19929.599925756
livetime	19677.239331332
ontime2	19926.358965516
ontime3	19929.599925756
ontime5	19929.599925756
ontime6	19926.358935595
ontime7	19929.599925756
ontime8	19929.599925756
l2events	195414



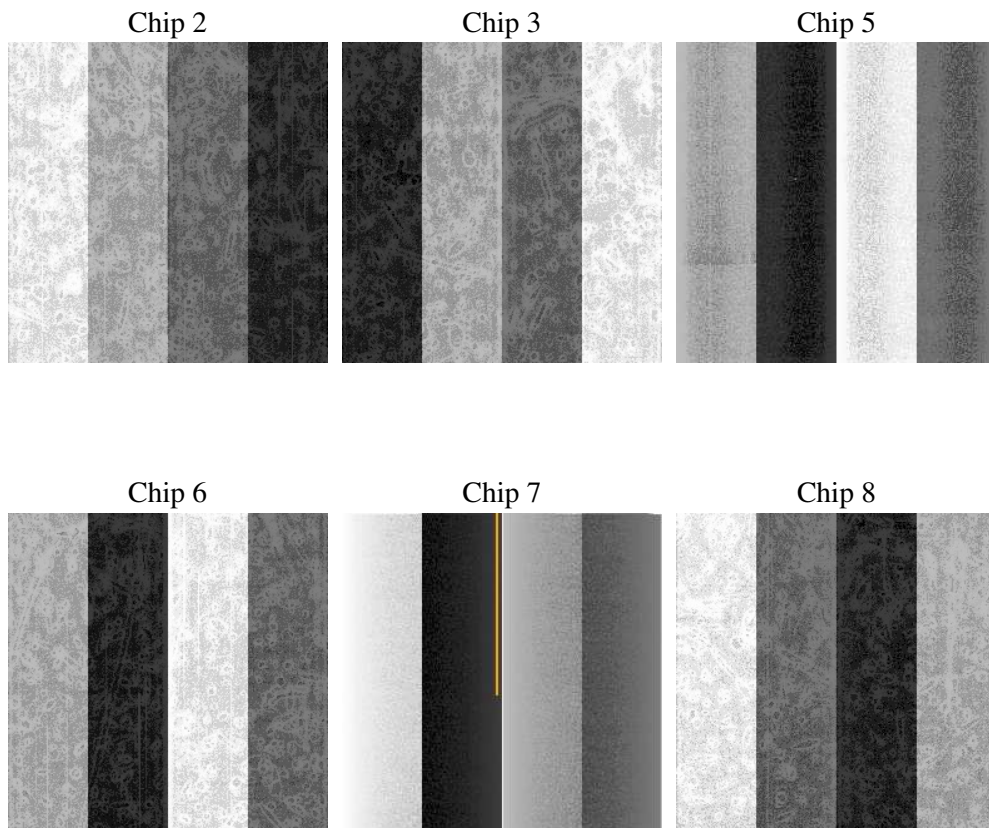
## 2 OBI

### 2.1 OBI

#### 2.1.1 Images



#### 2.1.2 Bias



### 2.1.3 Parameters

obi_num	2
ascdsver	7.6.9
caldsver	3.2.4
date	2006-11-30T05:56:37
revision	4

sched_exp_time	20000.000000
ontime	19935.385109574
ontime2	19932.144149333
ontime3	19935.385109574
ontime5	19935.385109574
ontime6	19932.144119412
ontime7	19935.385109574
ontime8	19935.385109574
l1events	886659

### 2.1.4 Events

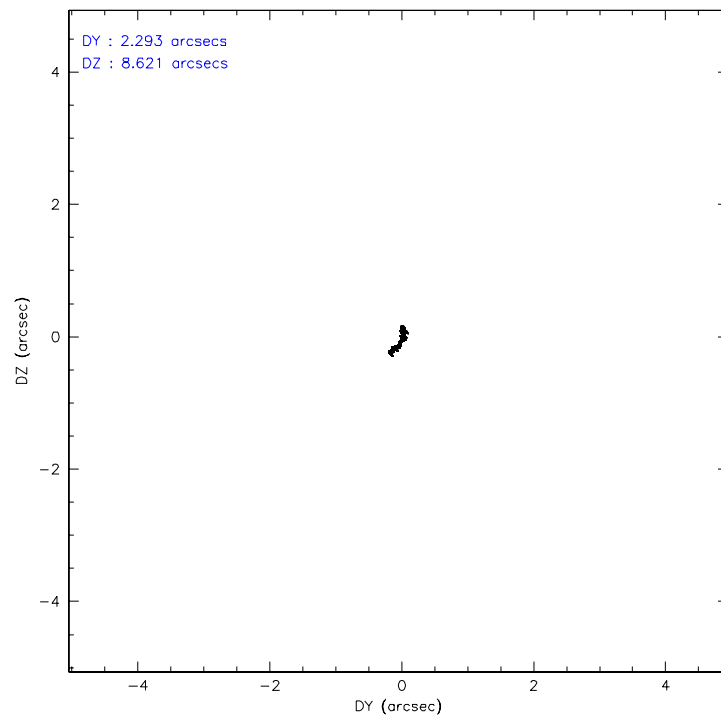
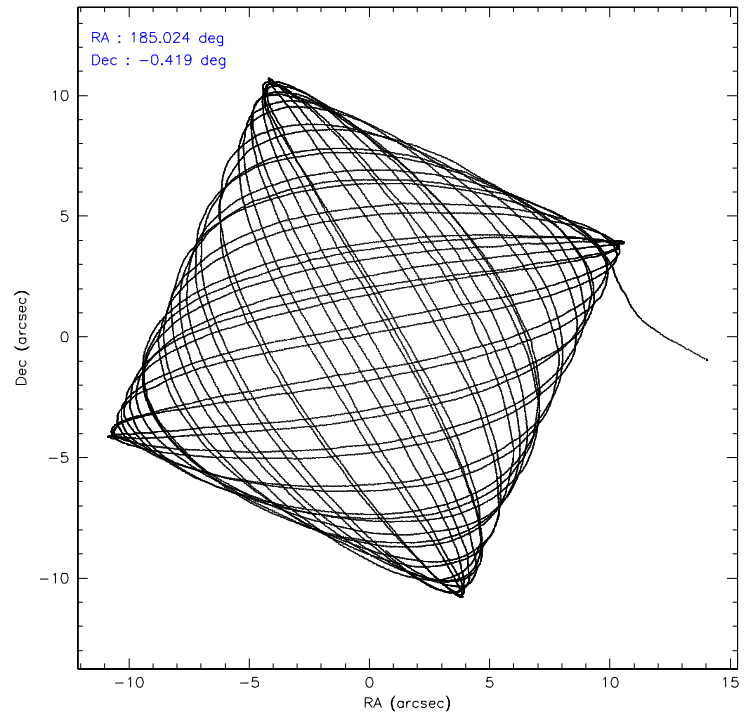
	ccd 2	ccd 3	ccd 5	ccd 6	ccd 7	ccd 8
level 1 events	127123	120166	191760	124347	167100	156163
rejected events	111629	104929	102840	108590	101144	121397
rejected %	87%	87%	53%	87%	60%	77%

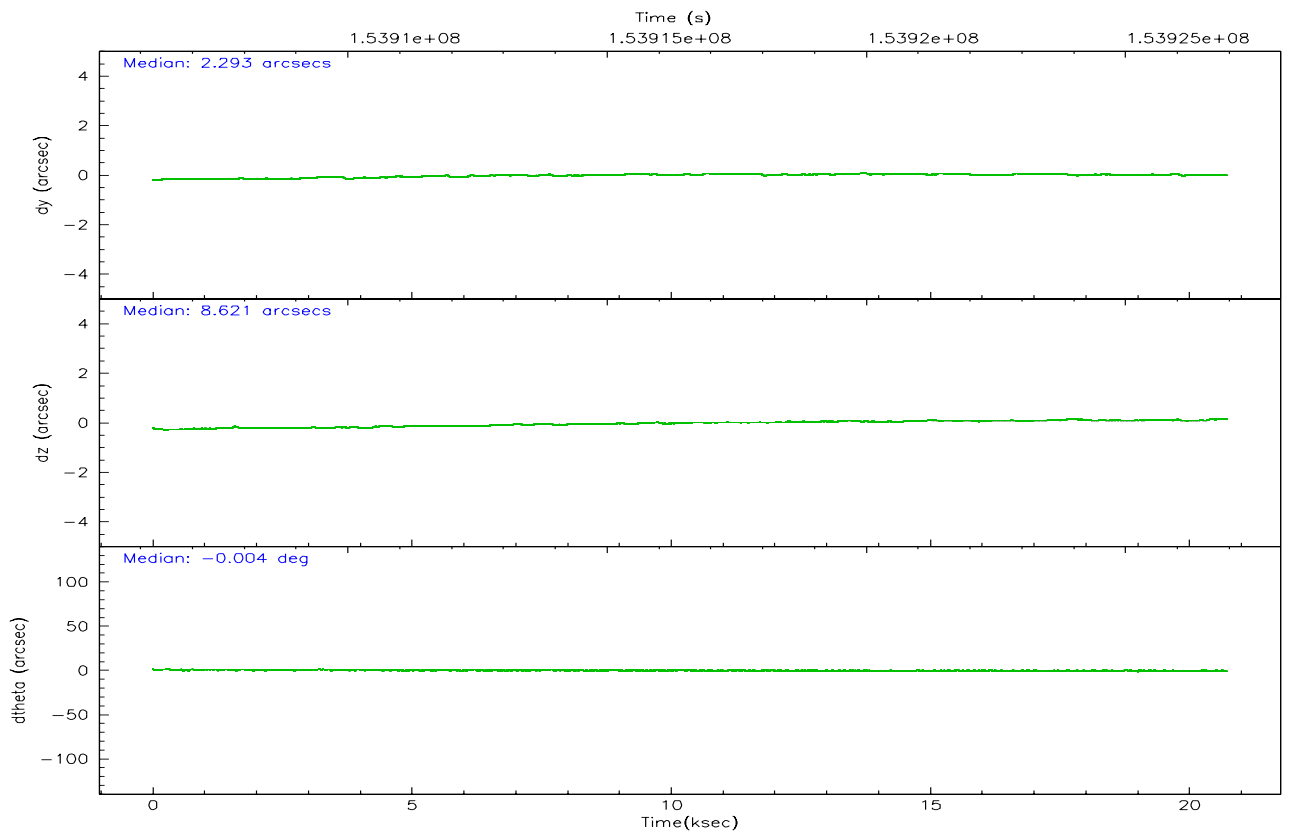
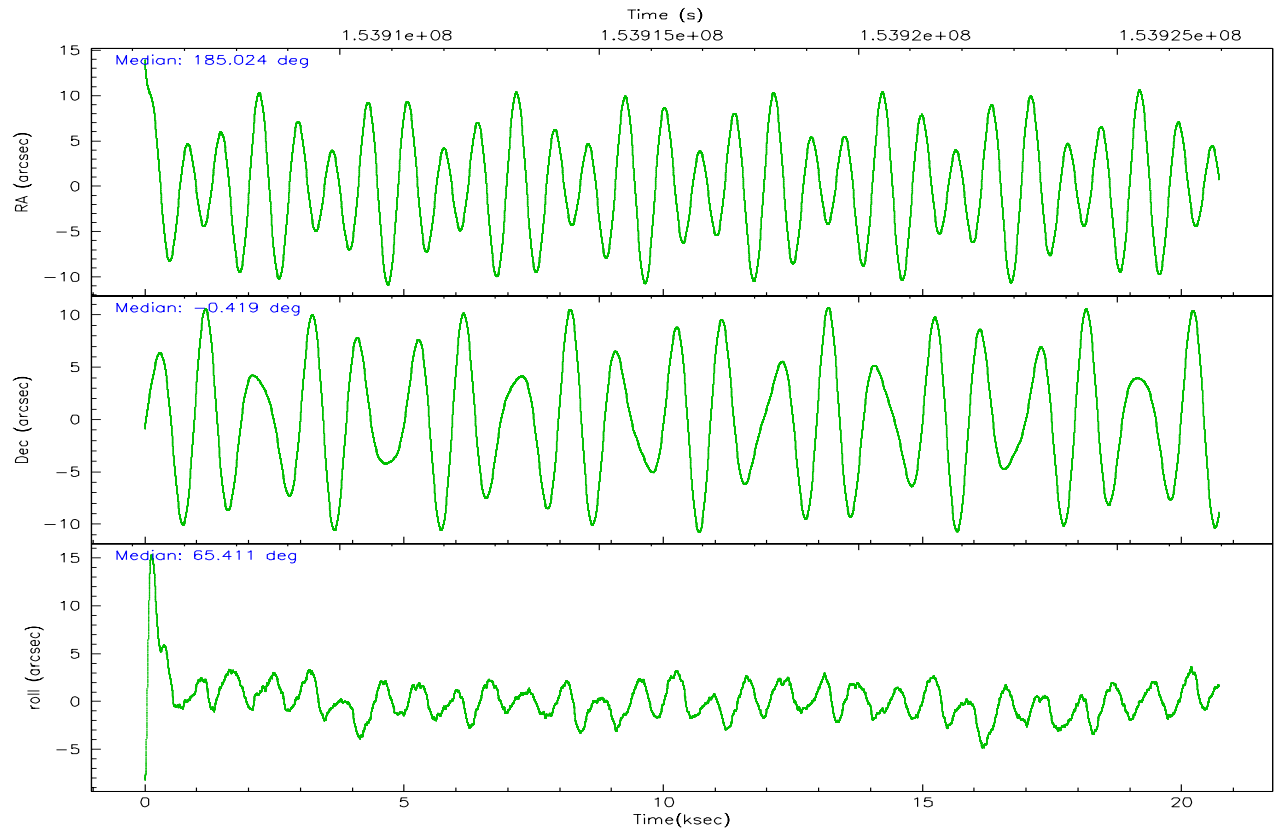
	ccd 2	ccd 3	ccd 5	ccd 6	ccd 7	ccd 8
grade 0 events	6927	6708	14297	6451	4854	11994
	5%	5%	7%	5%	2%	7%
grade 1 events	72	62	156	52	107	97
	0%	0%	0%	0%	0%	0%
grade 2 events	3196	3000	25962	3338	16114	7264
	2%	2%	13%	2%	9%	4%
grade 3 events	1397	1459	1940	1542	3509	3800
	1%	1%	1%	1%	2%	2%
grade 4 events	1406	1450	1816	1440	3501	3537
	1%	1%	0%	1%	2%	2%
grade 5 events	4714	5170	8849	5532	11014	7125
	3%	4%	4%	4%	6%	4%
grade 6 events	2572	2627	44929	2989	38002	8179
	2%	2%	23%	2%	22%	5%
grade 7 events	106839	99690	93811	103003	89999	114167
	84%	82%	48%	82%	53%	73%

## 2.2 Compared Parameters

Parameter	Planned	Actual	Parameter	Planned	Actual
Instrument	ACIS	ACIS	Obspar format version number	6	6
Detector	ACIS-235678	ACIS-235678	Obspar file type	PREDICTED	ACTUAL
Grating	NONE	NONE	Obspar update status	NONE	UPDATED
Data mode	FAINT	FAINT	Number of optional ACIS chips dropped	0	0
Observation mode	POINTING	POINTING	On-chip summing requested	N	N
Pointing RA	185.026767	185.0238733540367	Subarray requested	NONE	NONE
Pointing Dec	-0.446617	-0.4195423567766599	Alternating exposures requested	N	N
Pointing Roll	65.258981	65.41556752578489	Primary exposure time	0.000000	3.2
SIM focus pos (mm)	-0.684267	-0.6828225247311905			
SIM defocus (mm)	0	0.001444936568705701			
SIM translation stage pos (mm)	-190.132523	-190.1425803651734			
SIM translation stage offset (mm)	0	0.01005778216563158			
Observation start time	153906966.184000	153905732.86876			
Observation start date	2002-11-17T07:55:02	2002-11-17T07:35:32			
Observation end time	153926966.184000	153927451.59466			
Observation end date	2002-11-17T13:28:22	2002-11-17T13:37:31			
Read mode	TIMED	TIMED			

## 2.3 Aspect





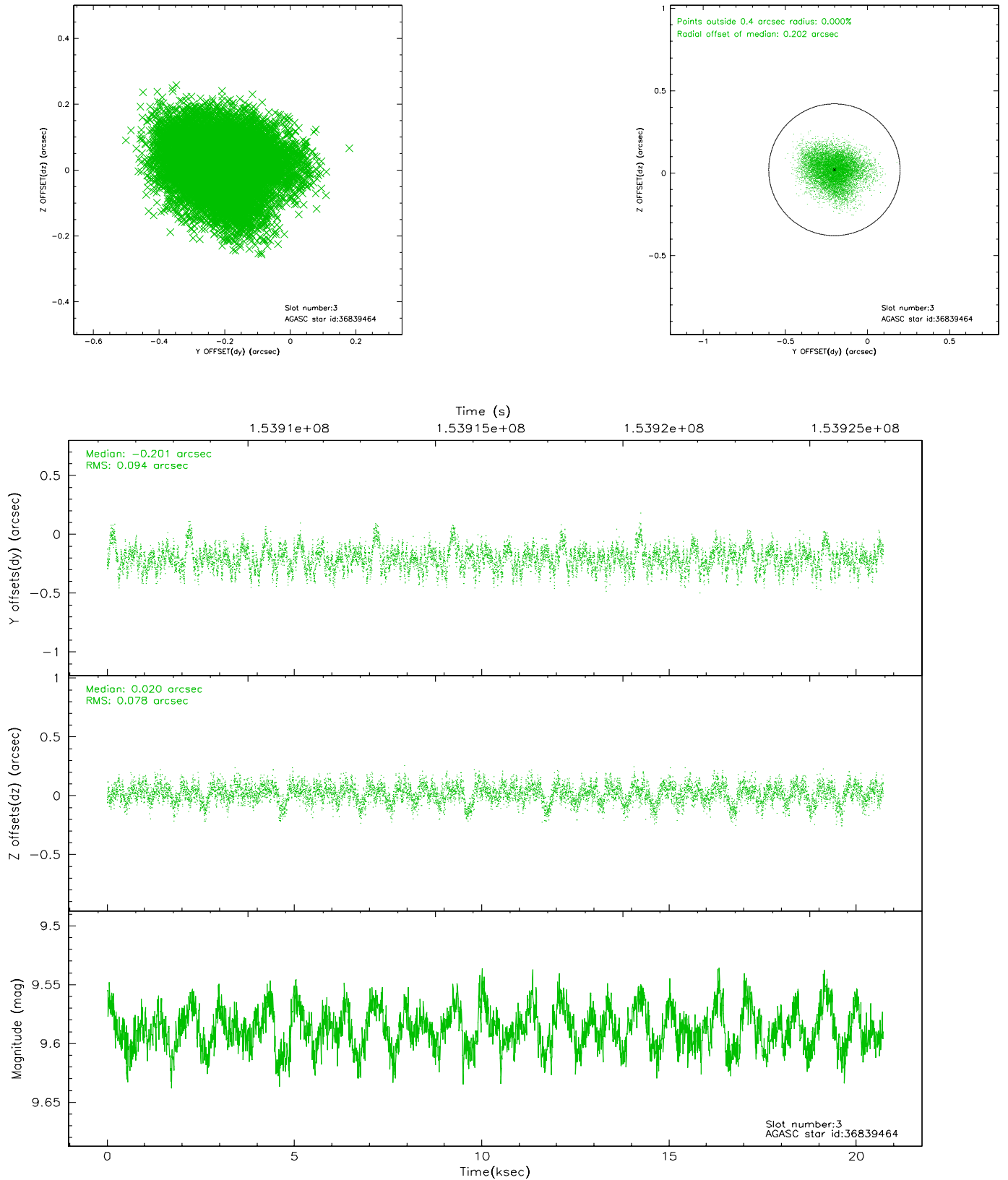
### Slot Statistics

slot	status	id	mag	n_pts	med_dy	med_dz	dr1	dr2	ra	dec	mean_y	mean_z
0	FID	ACIS-S-2	7.11	5055	-0.016	0.006	0.007	0.011	0.000000	0.000000	-754.92	-1729.74
1	FID	ACIS-S-4	7.20	5055	-0.041	0.006	0.005	0.008	0.000000	0.000000	2158.26	178.55
2	FID	ACIS-S-5	7.24	5055	0.026	-0.003	0.006	0.010	0.000000	0.000000	-1807.49	172.43
3	GUIDE	36839464	9.59	10104	-0.201	0.020	0.131	0.209	184.715764	0.010012	1023.90	1704.99
4	GUIDE	647502016	9.52	10105	0.003	-0.130	0.108	0.175	184.706329	-0.112412	609.37	1551.54
5	GUIDE	647627424	9.86	10101	0.108	0.154	0.099	0.160	185.169664	-1.125423	-2004.02	-1489.70
6	GUIDE	647627504	9.47	10106	-0.113	0.061	0.091	0.147	185.704494	-0.249735	1664.43	-1919.15
7	GUIDE	647500448	9.49	10106	0.210	-0.103	0.099	0.179	184.807560	-0.597958	-824.91	488.22

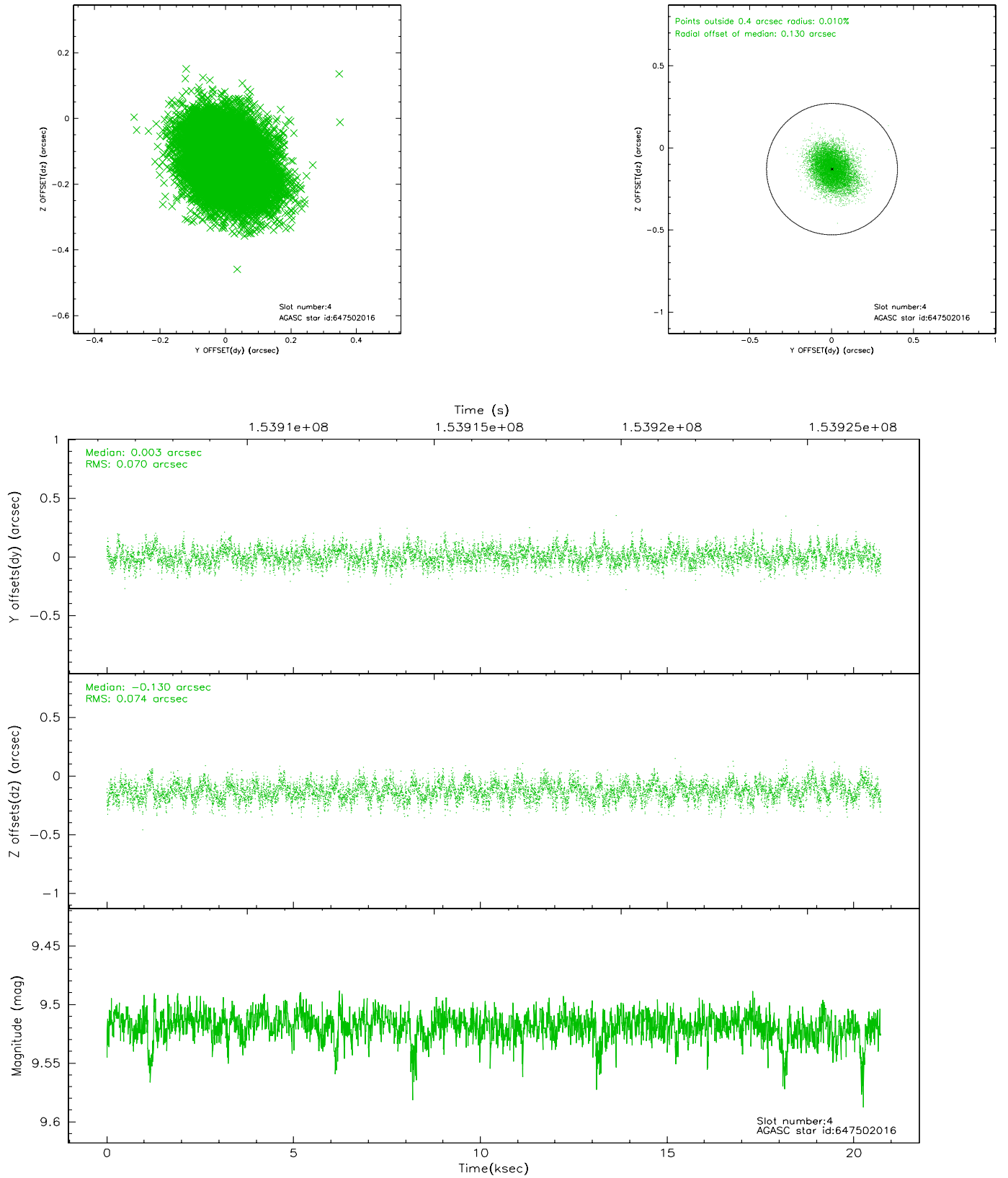


## 2.4 Star Slots

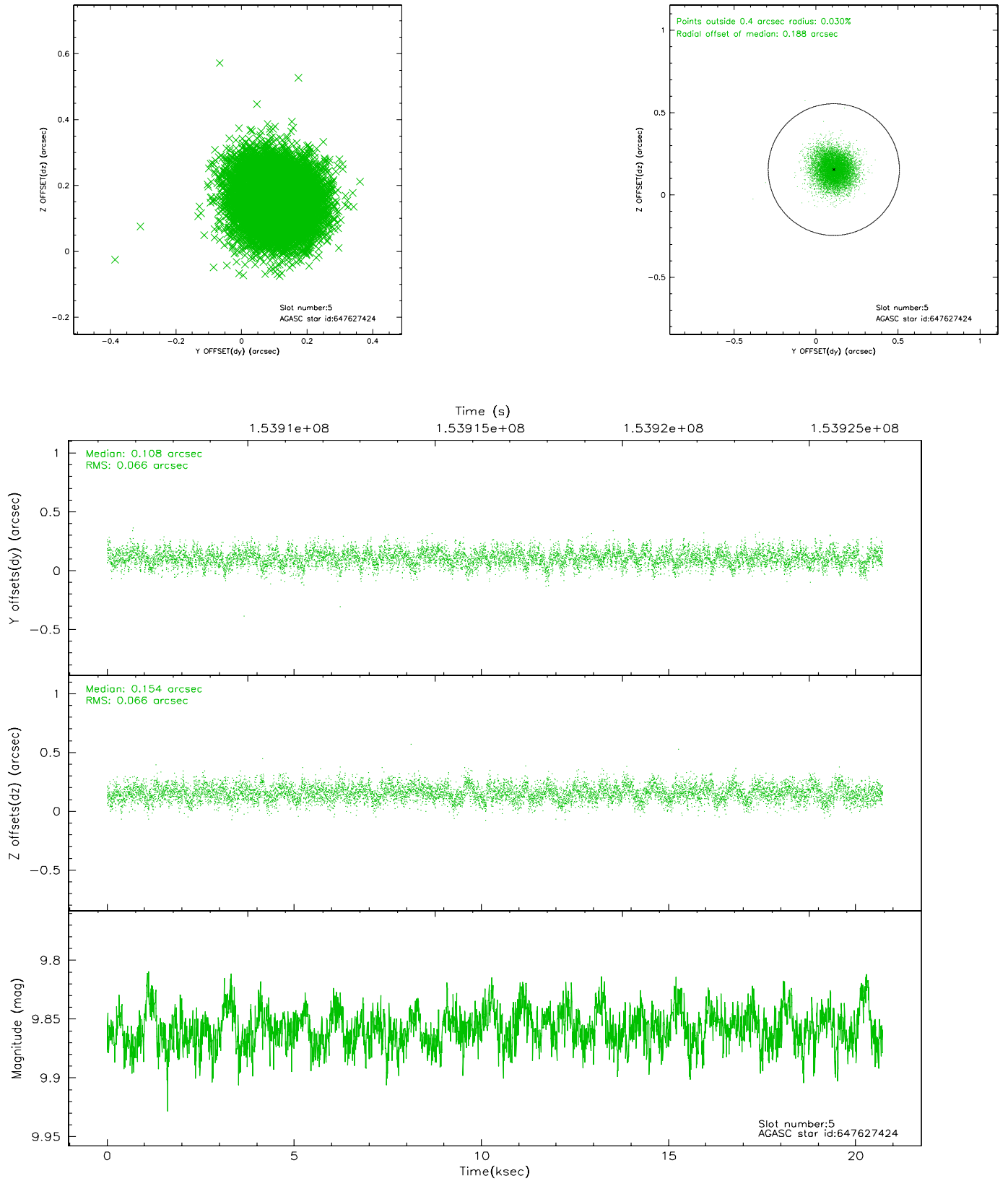
### 2.4.1 Slot 3



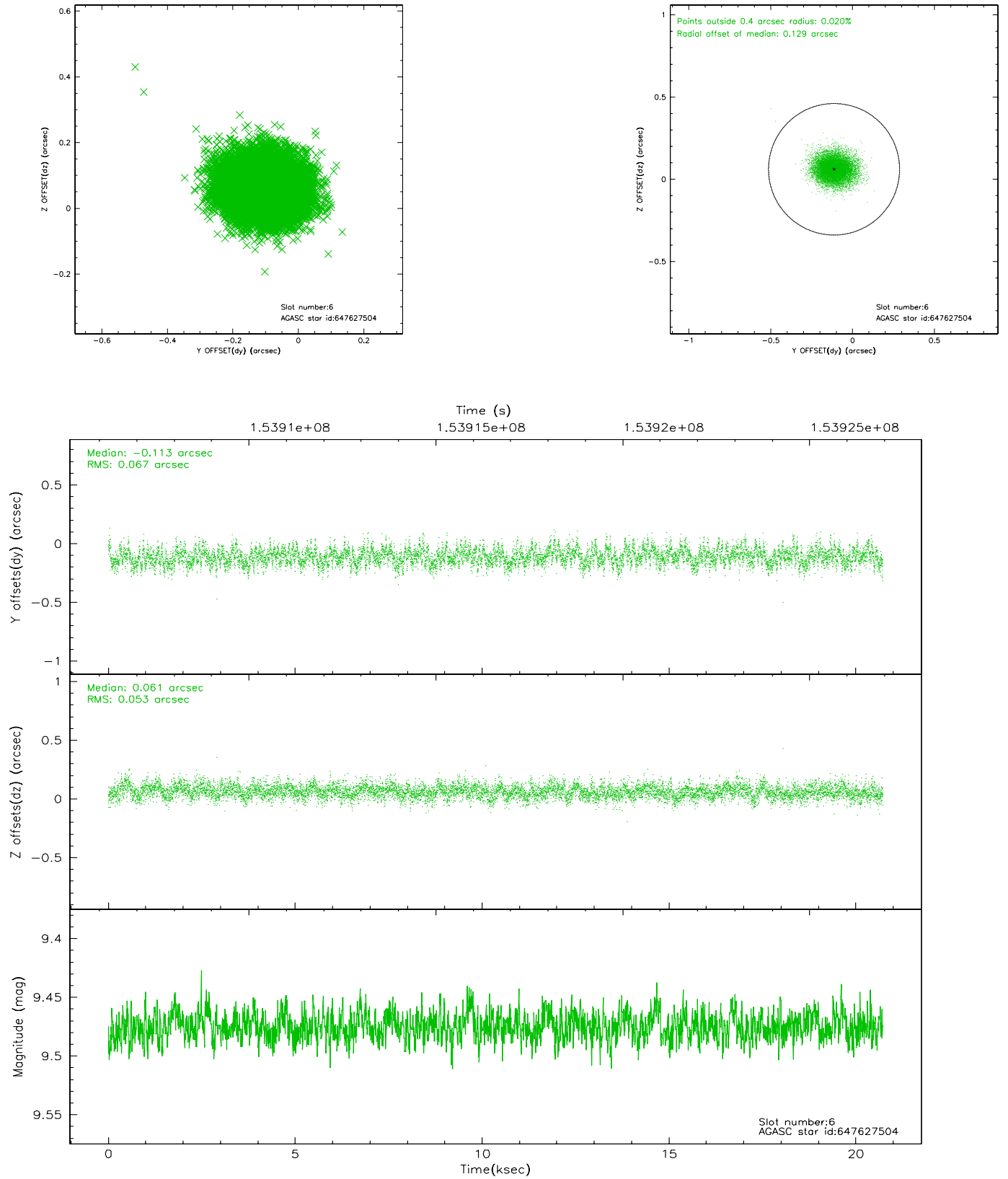
## 2.4.2 Slot 4



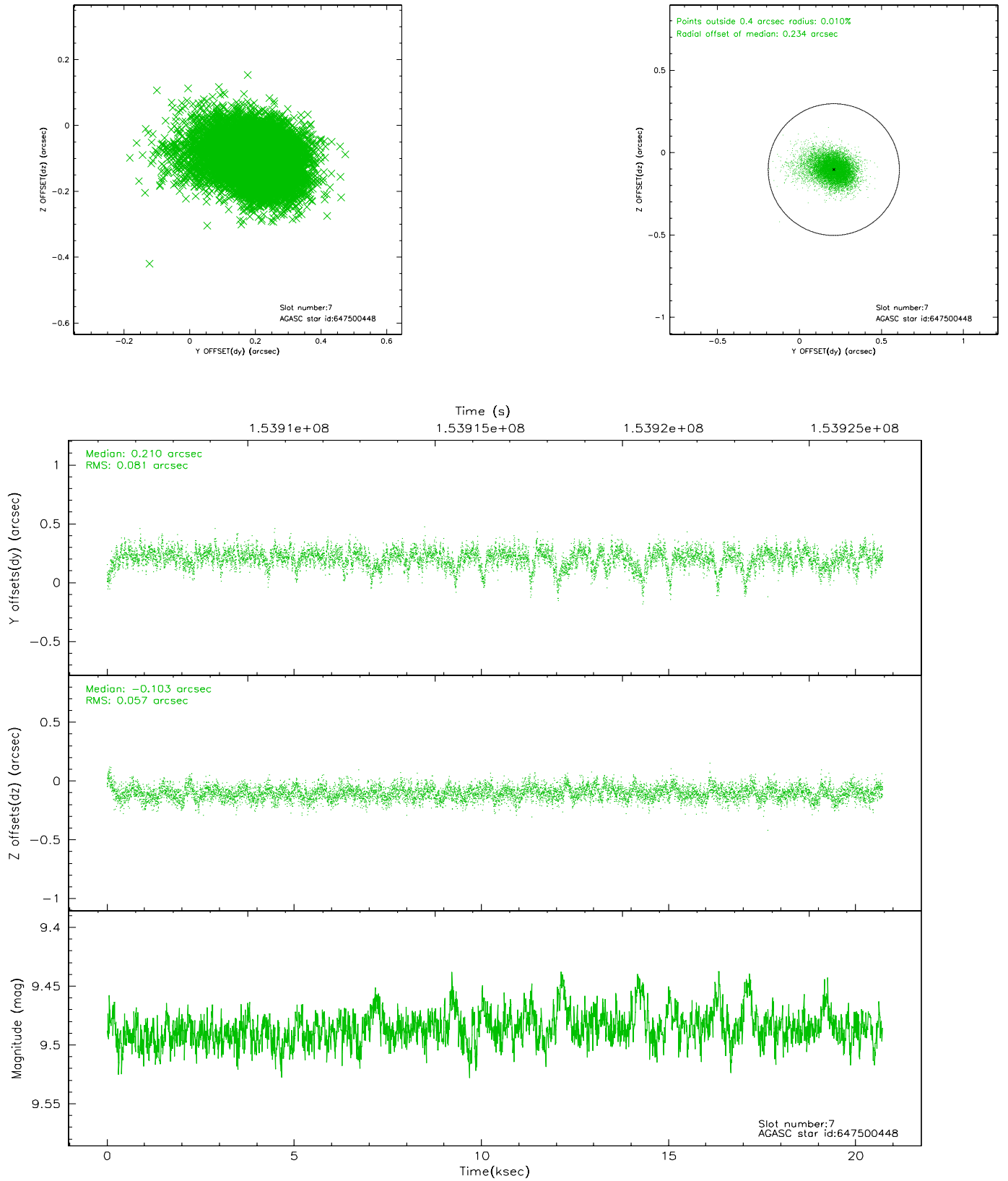
### 2.4.3 Slot 5



## 2.4.4 Slot 6

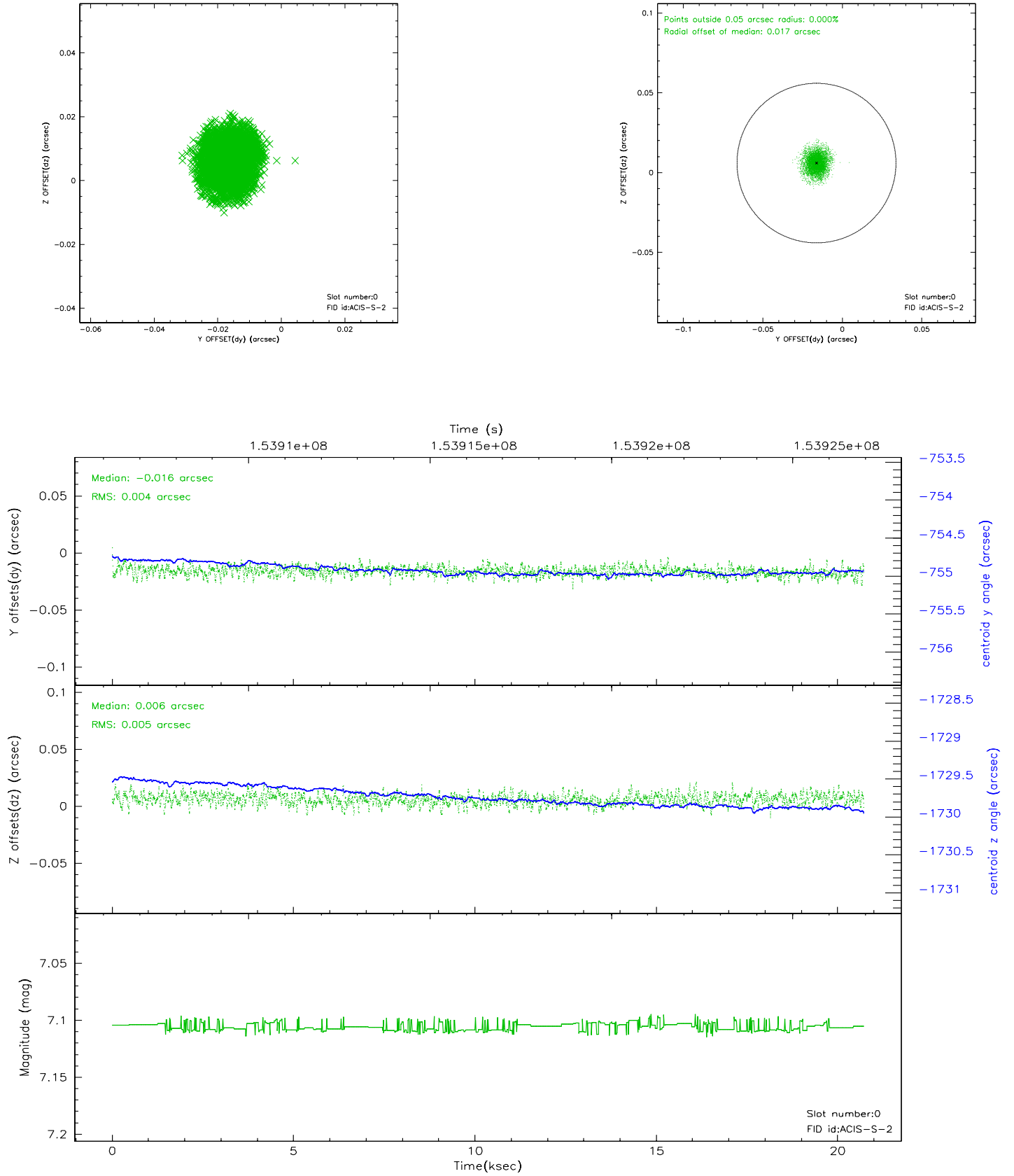


## 2.4.5 Slot 7

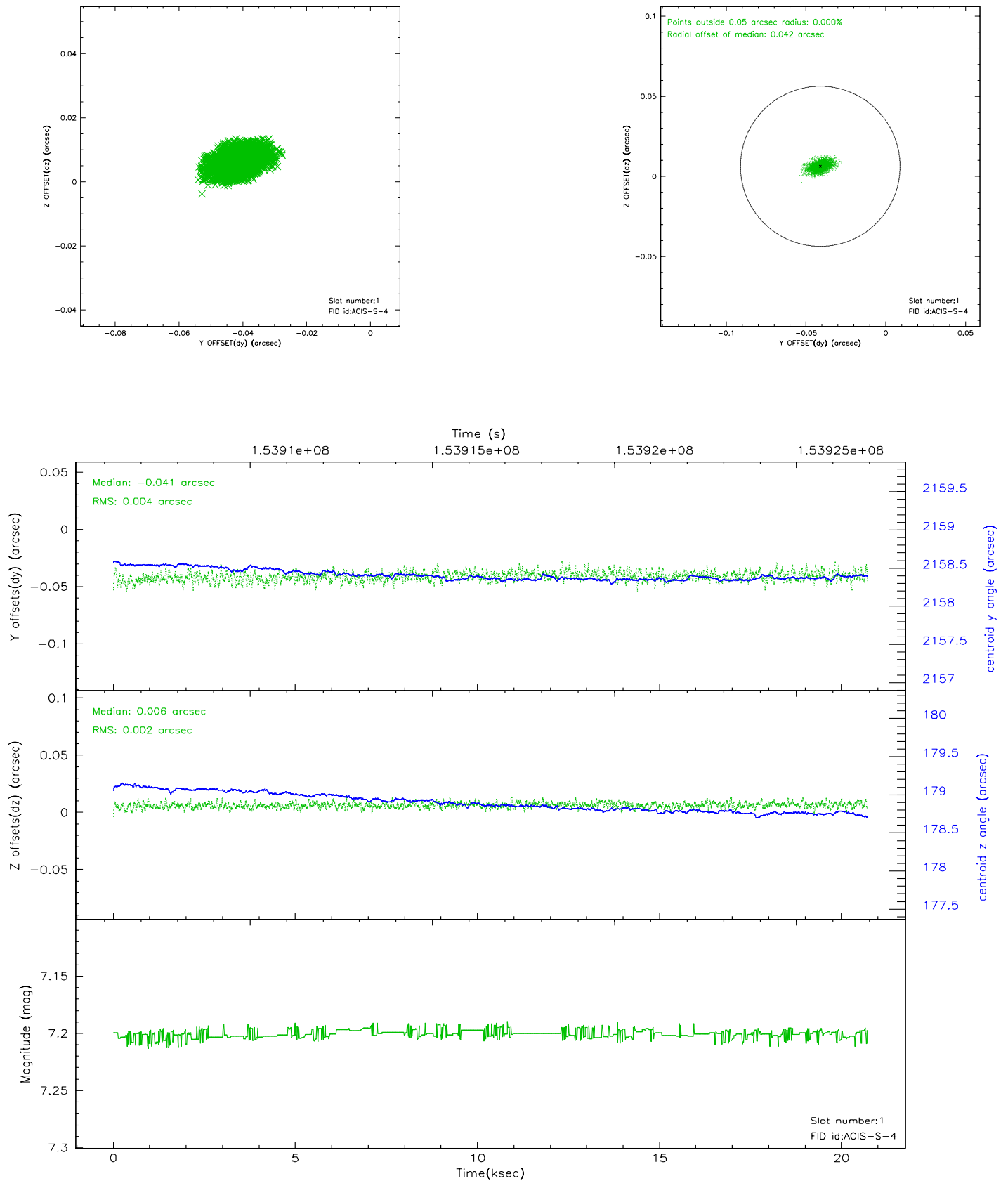


## 2.5 FID Slots

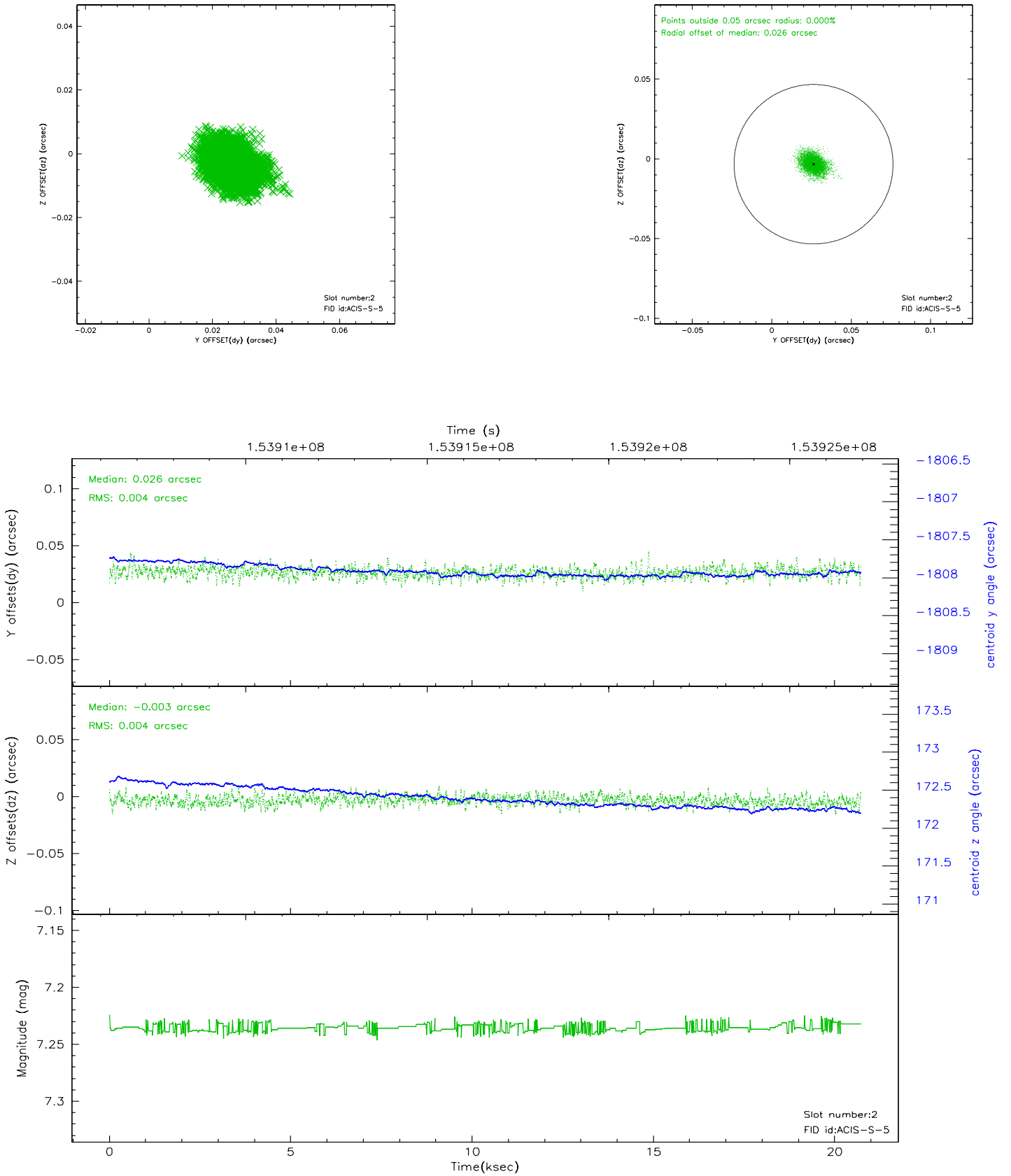
### 2.5.1 Slot 0



## 2.5.2 Slot 1

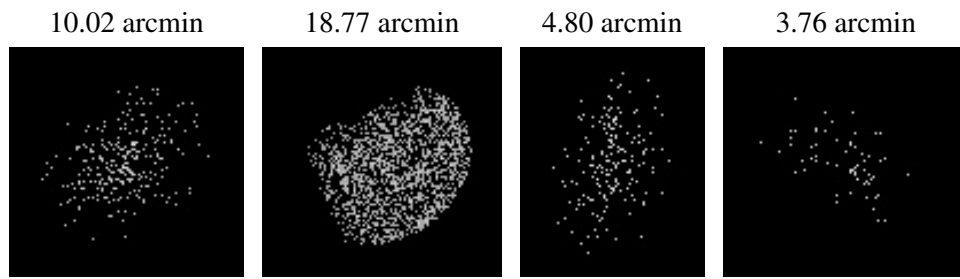


### 2.5.3 Slot 2





### 3 Point Sources



## A Summary

### A.1 Status

V&V Scientist	Beth Sundheim
V&V Date (YYYY-MM-DD)	2006.11.30
V&V Edition	1
V&V Disposition and Status	OK
V&V Charge Time	19.932

### A.2 Comments