

V&V Reference Report

L2 ASCDS Version : 7.6.9

Observation 3133 - L2 Version 001
Chandra X-Ray Center

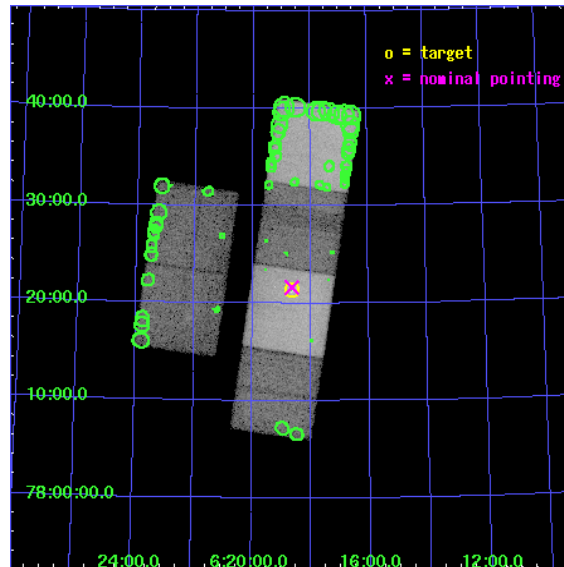
L2 Processing Date : Oct 5 2006

Contents

1	Front	2
2	OBI	3
2.1	OBI	3
2.1.1	Images	3
2.1.2	Bias	3
2.1.3	Parameters	4
2.1.4	Events	4
2.2	Compared Parameters	5
2.3	Aspect	6
2.4	Star Slots	9
2.4.1	Slot 3	9
2.4.2	Slot 4	10
2.4.3	Slot 5	11
2.4.4	Slot 6	12
2.4.5	Slot 7	13
2.5	FID Slots	14
2.5.1	Slot 0	14
2.5.2	Slot 1	15
2.5.3	Slot 2	16
3	Point Sources	17
A	Summary	18
A.1	Status	18
A.2	Comments	18

1 Front

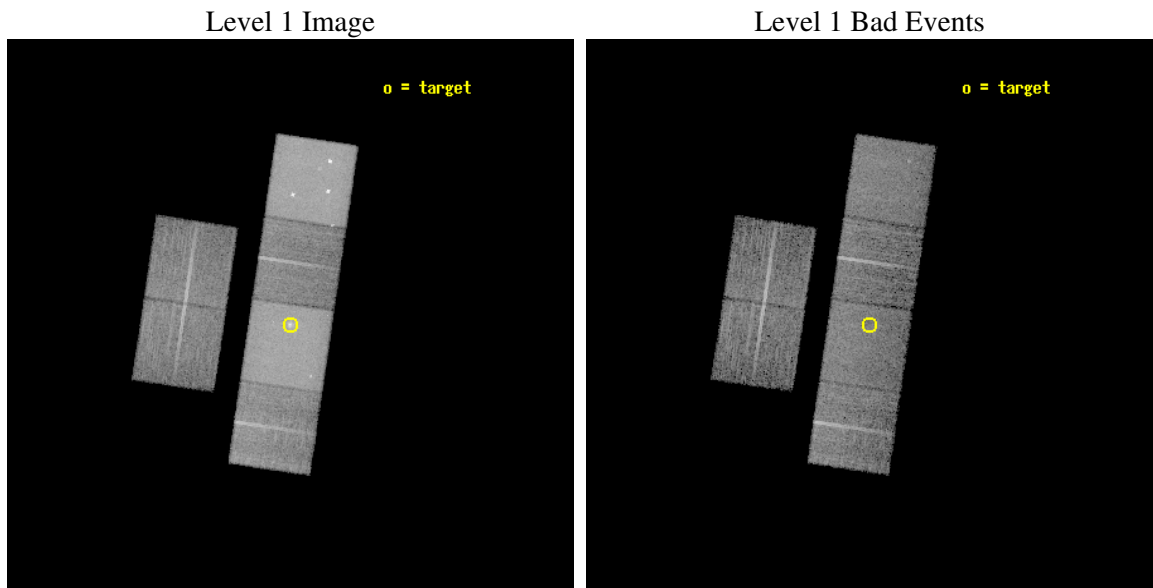
seq_num	700572
obs_id	3133
title	SEARCH FOR AN INTERMEDIATE MASS BLACK HOLE IN THE STARBURST GALAXY NGC2146
observer	Dr Hironori Matsumoto
object	NGC2146
dtcycle	0
cycle	P
ra_targ	94.655417
dec_targ	78.356556
ra_nom	94.660854454509
dec_nom	78.360755667931
roll_nom	98.432959844296
revision	2
ontime	9958.3999629021
livetime	9832.3007063432
ontime2	9958.3999629021
ontime3	9958.3999629021
ontime5	9958.3999629021
ontime6	9958.3999629021
ontime7	9958.3999629021
ontime8	9955.1589926183
l2events	301316



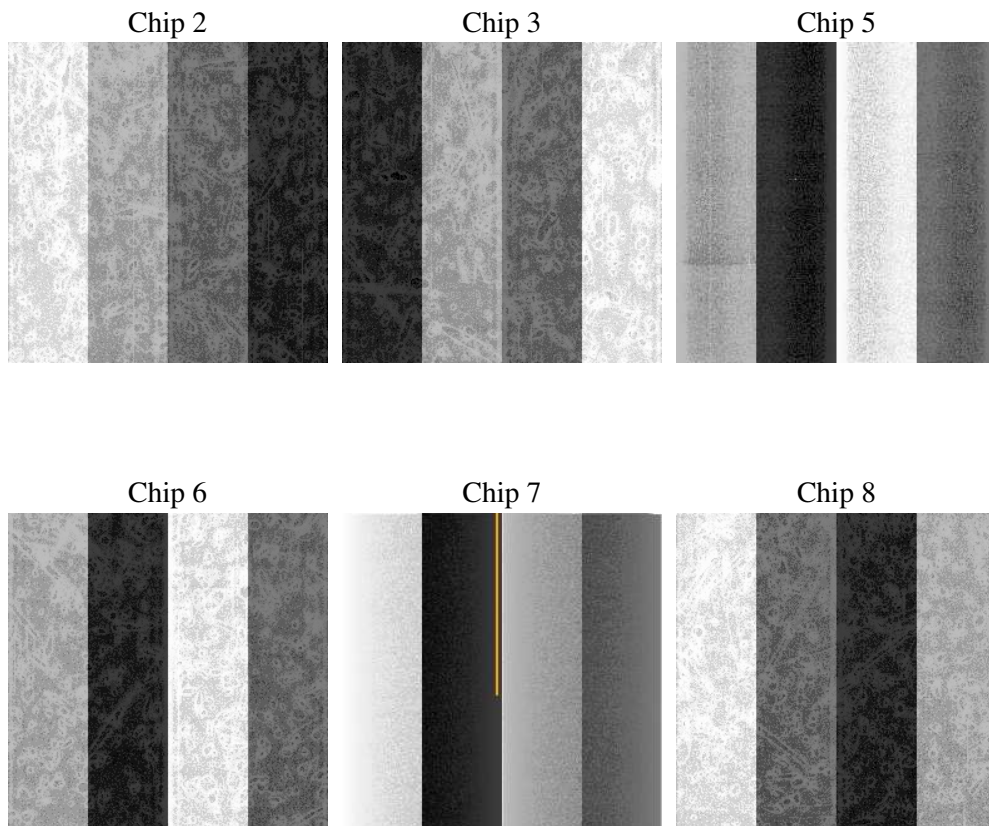
2 OBI

2.1 OBI

2.1.1 Images



2.1.2 Bias



2.1.3 Parameters

obi_num	0
ascdsver	7.6.9
caldbver	3.2.3
date	2006-10-05T22:02:57
revision	2

sched_exp_time	10200.000000
ontime	9962.8364726007
ontime2	9962.8364726007
ontime3	9962.8364726007
ontime5	9962.8364726007
ontime6	9962.8364726007
ontime7	9962.8364726007
ontime8	9959.595402658
l1events	697463

2.1.4 Events

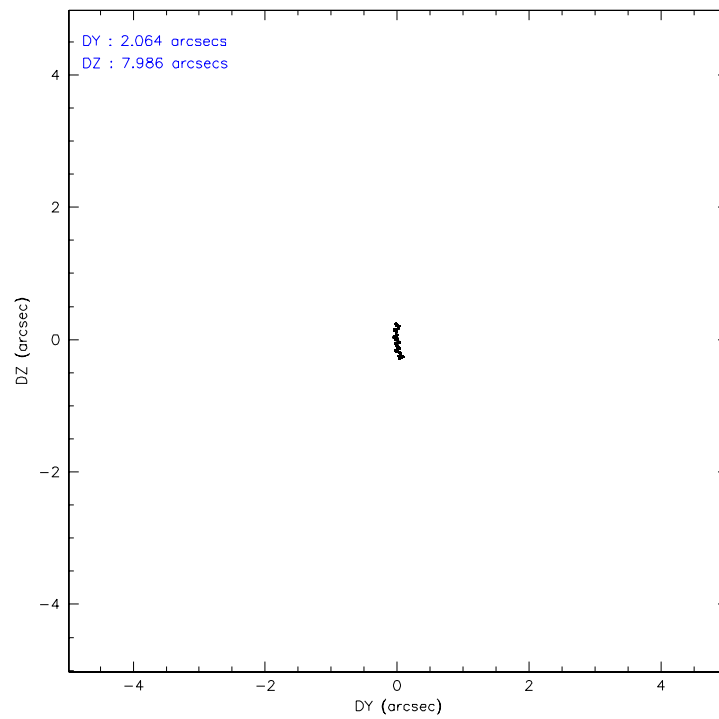
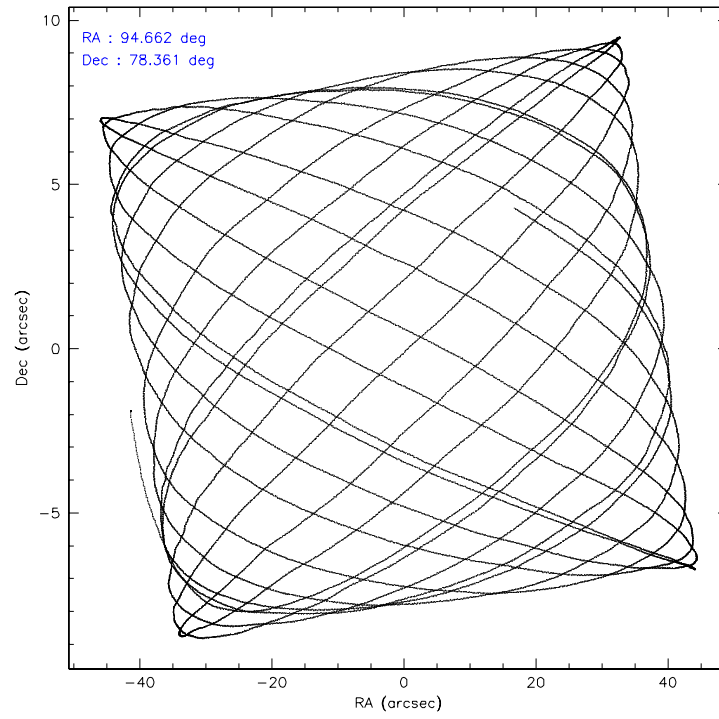
	ccd 2	ccd 3	ccd 5	ccd 6	ccd 7	ccd 8
level 1 events	80000	78167	182333	84356	168674	103933
rejected events	59308	57303	64942	58247	62274	68197
rejected %	74%	73%	35%	69%	36%	65%

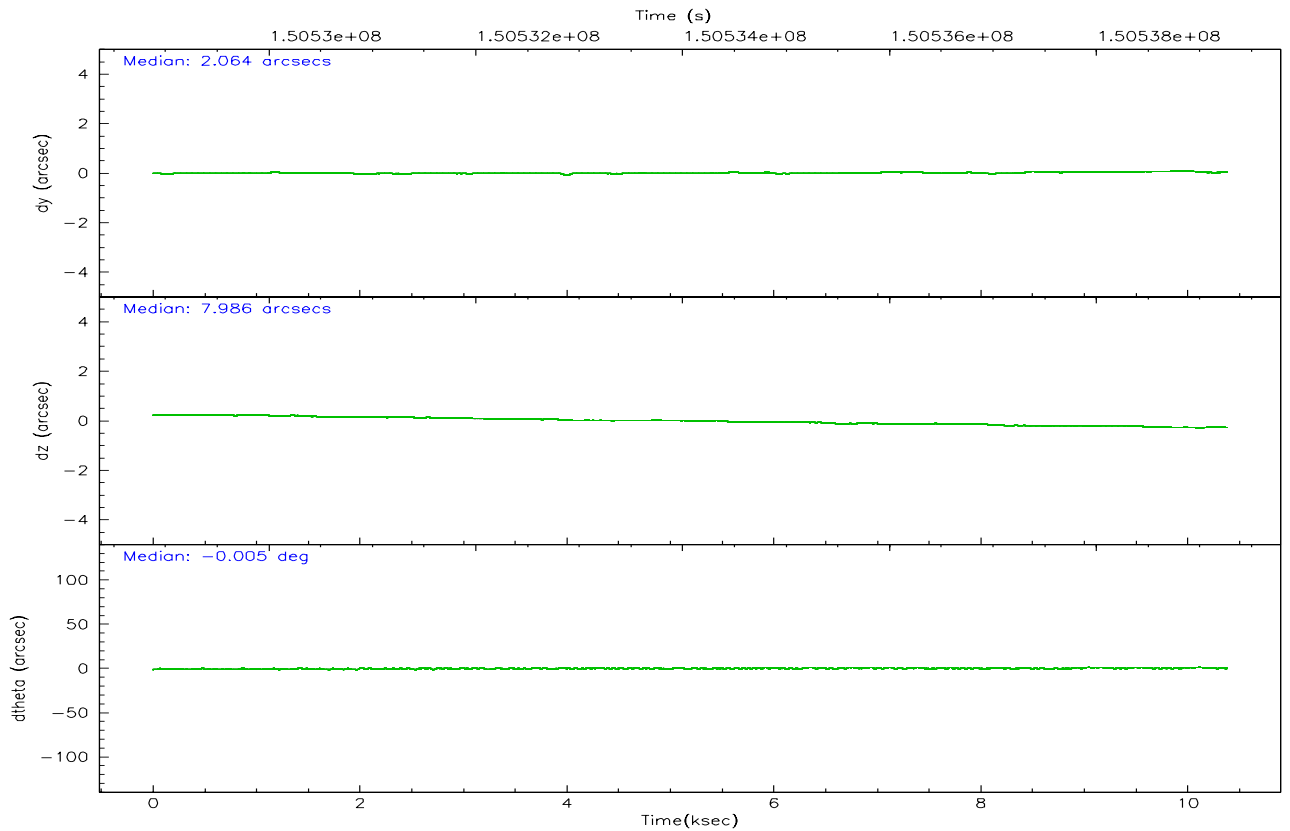
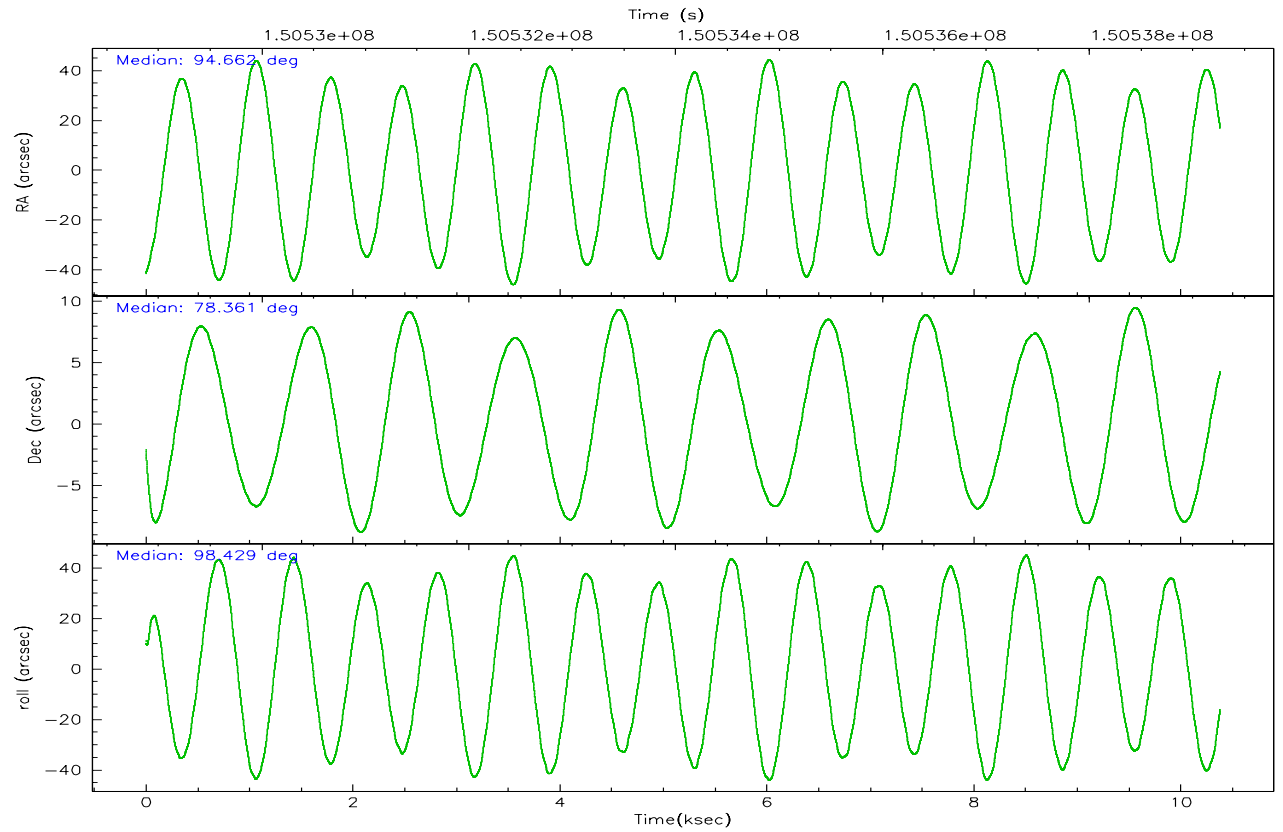
	ccd 2	ccd 3	ccd 5	ccd 6	ccd 7	ccd 8
grade 0 events	13770	13697	15902	17220	10052	20076
	17%	17%	8%	20%	5%	19%
grade 1 events	82	84	301	88	44	140
	0%	0%	0%	0%	0%	0%
grade 2 events	3054	3228	36845	4416	22621	6134
	3%	4%	20%	5%	13%	5%
grade 3 events	1053	1057	3874	1128	6206	2277
	1%	1%	2%	1%	3%	2%
grade 4 events	1037	1082	3776	1126	5978	2109
	1%	1%	2%	1%	3%	2%
grade 5 events	2541	2823	5498	2901	6349	3831
	3%	3%	3%	3%	3%	3%
grade 6 events	1794	1820	57048	2242	61595	5164
	2%	2%	31%	2%	36%	4%
grade 7 events	56669	54376	59089	55235	55829	64202
	70%	69%	32%	65%	33%	61%

2.2 Compared Parameters

Parameter	Planned	Actual	Parameter	Planned	Actual
Instrument	ACIS	ACIS	Obspar format version number	6	6
Detector	ACIS-235678	ACIS-235678	Obspar file type	PREDICTED	ACTUAL
Grating	NONE	NONE	Obspar update status	NONE	UPDATED
Data mode	FAINT	FAINT	Number of optional ACIS chips dropped	0	0
Observation mode	POINTING	POINTING	On-chip summing requested	N	N
Pointing RA	94.745915	94.66085445450874	Subarray requested	NONE	NONE
Pointing Dec	78.339657	78.3607556679309	Alternating exposures requested	N	N
Pointing Roll	98.193054	98.43295984429591	Primary exposure time	0.000000	3.2
SIM focus pos (mm)	-0.684267	-0.6828225247311905			
SIM defocus (mm)	0	0.001444936568705701			
SIM translation stage pos (mm)	-190.132523	-190.1400660498719			
SIM translation stage offset (mm)	0	0.00754346686406393			
Observation start time	150529060.184000	150528301.35344			
Observation start date	2002-10-09T05:36:36	2002-10-09T05:25:01			
Observation end time	150539260.184000	150540480.91644			
Observation end date	2002-10-09T08:26:36	2002-10-09T08:48:00			
Read mode	TIMED	TIMED			

2.3 Aspect



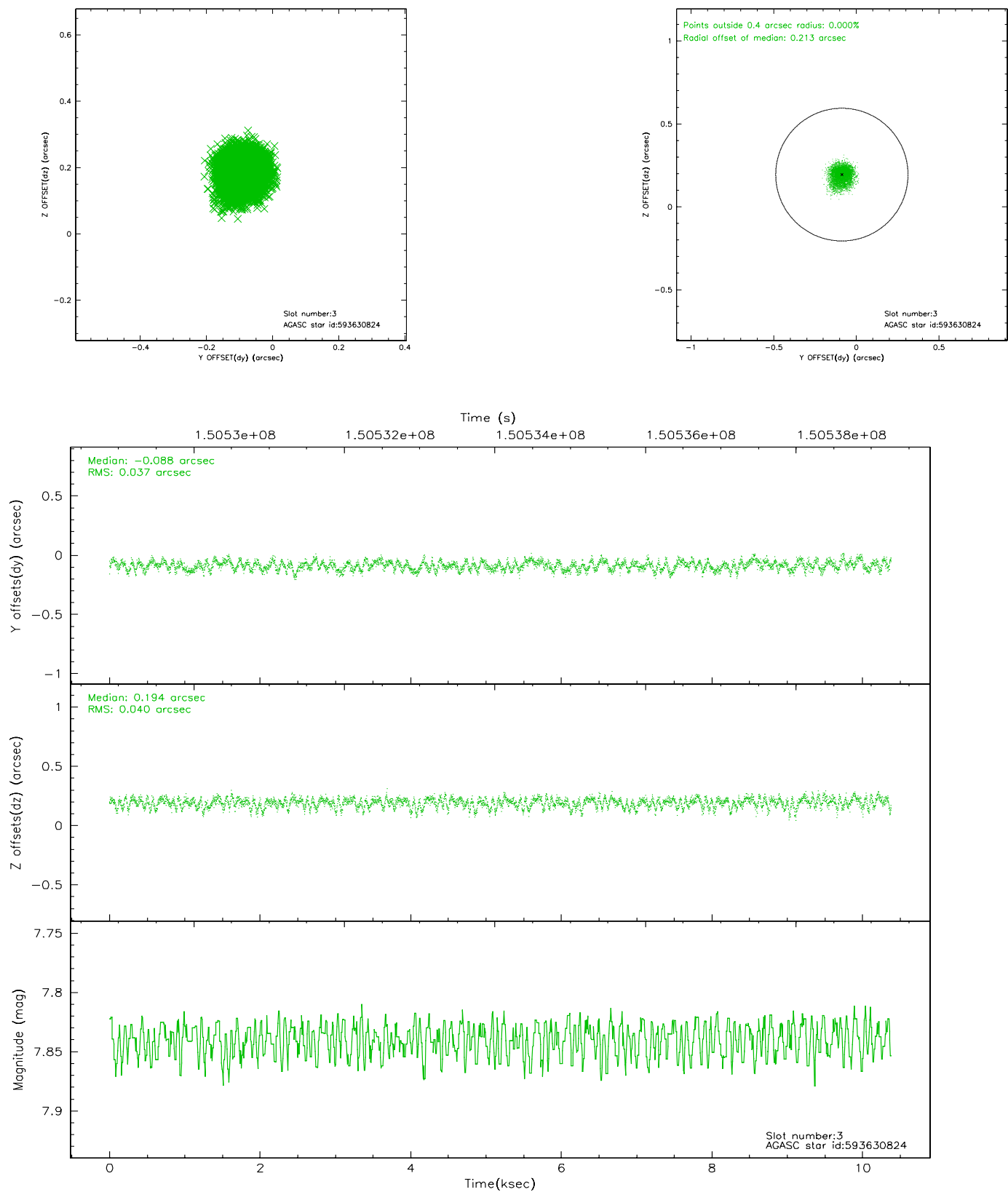


Slot Statistics

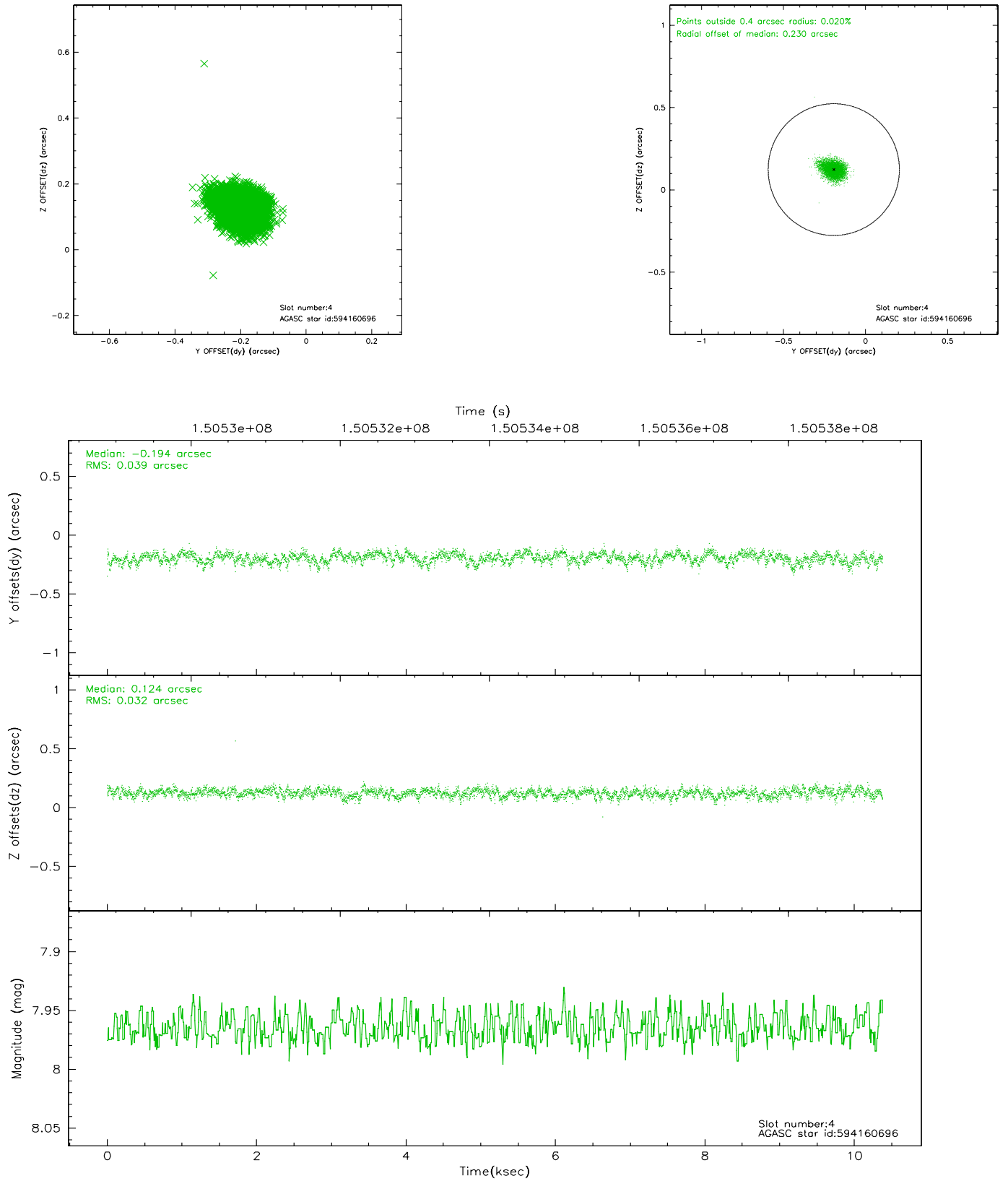
slot	status	id	mag	n_pts	med_dy	med_dz	dr1	dr2	ra	dec	mean_y	mean_z
0	FID	ACIS-S-1	7.19	2533	0.015	0.005	0.010	0.017	0.000000	0.000000	941.33	-1724.80
1	FID	ACIS-S-5	7.24	2533	0.020	0.038	0.007	0.014	0.000000	0.000000	-1807.34	172.31
2	FID	ACIS-S-6	7.35	2533	-0.056	-0.031	0.010	0.016	0.000000	0.000000	406.32	816.73
3	GUIDE	593630824	7.84	5065	-0.088	0.194	0.058	0.092	97.139560	77.959365	-1575.51	-1588.08
4	GUIDE	594160696	7.97	5066	-0.194	0.124	0.053	0.087	96.554720	78.795378	1461.81	-1488.13
5	GUIDE	593628560	8.26	5066	0.052	-0.192	0.070	0.111	92.260818	78.027017	-811.09	1991.43
6	GUIDE	593631272	8.36	5066	0.314	-0.031	0.069	0.109	97.229274	77.907214	-1769.04	-1636.16
7	GUIDE	594155200	9.10	5063	-0.084	-0.088	0.070	0.113	91.887725	78.921956	2403.19	1651.08

2.4 Star Slots

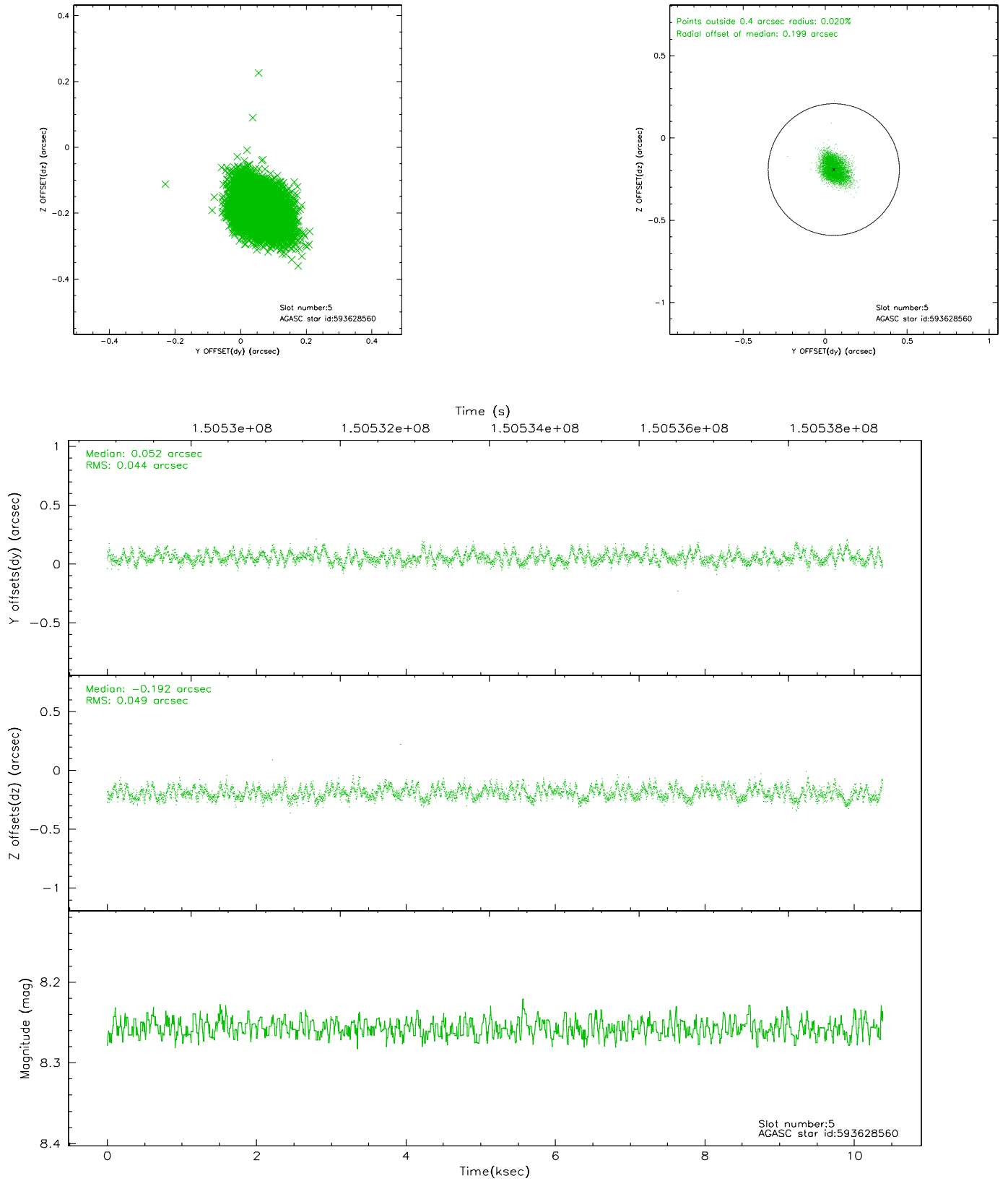
2.4.1 Slot 3



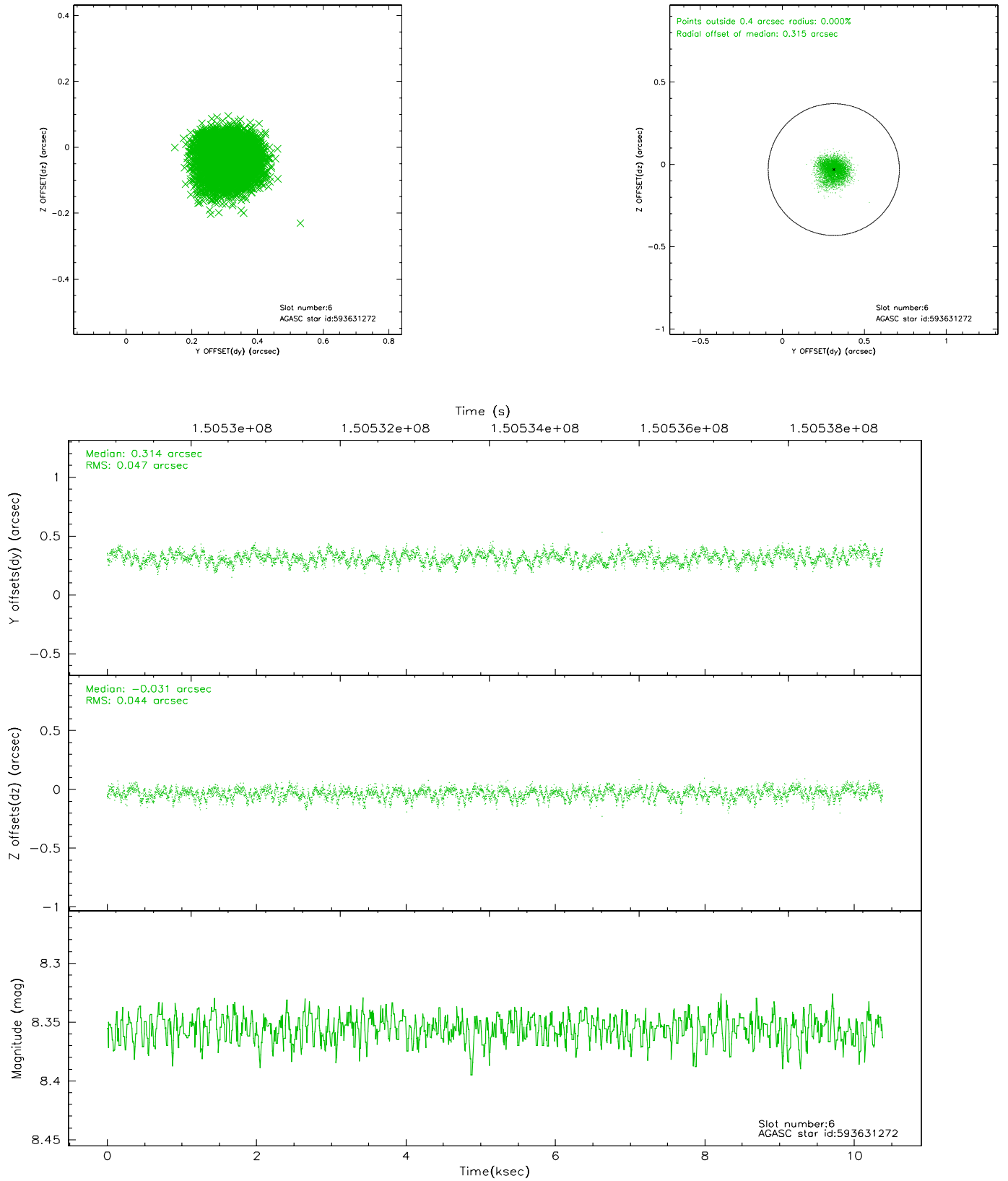
2.4.2 Slot 4



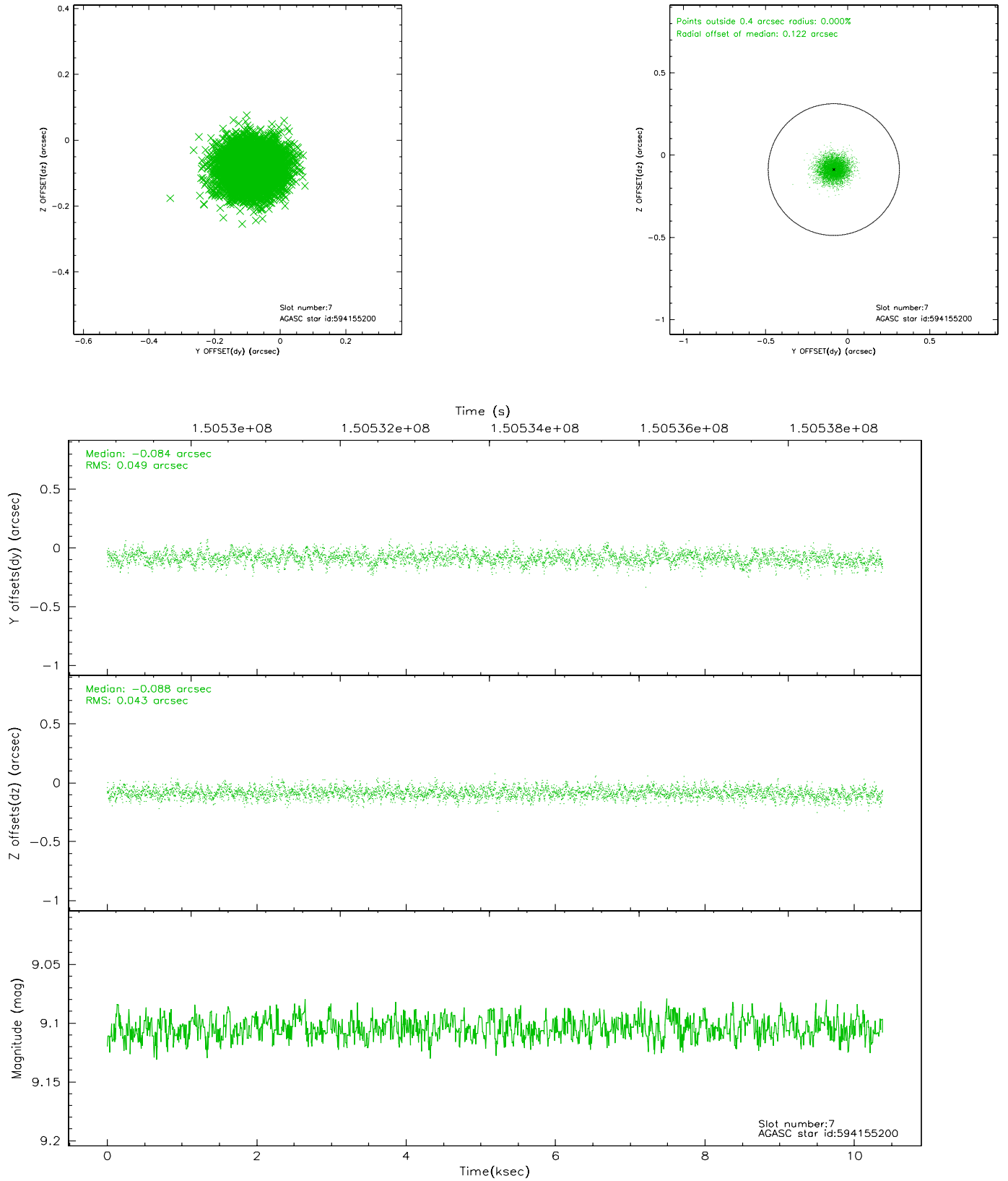
2.4.3 Slot 5



2.4.4 Slot 6

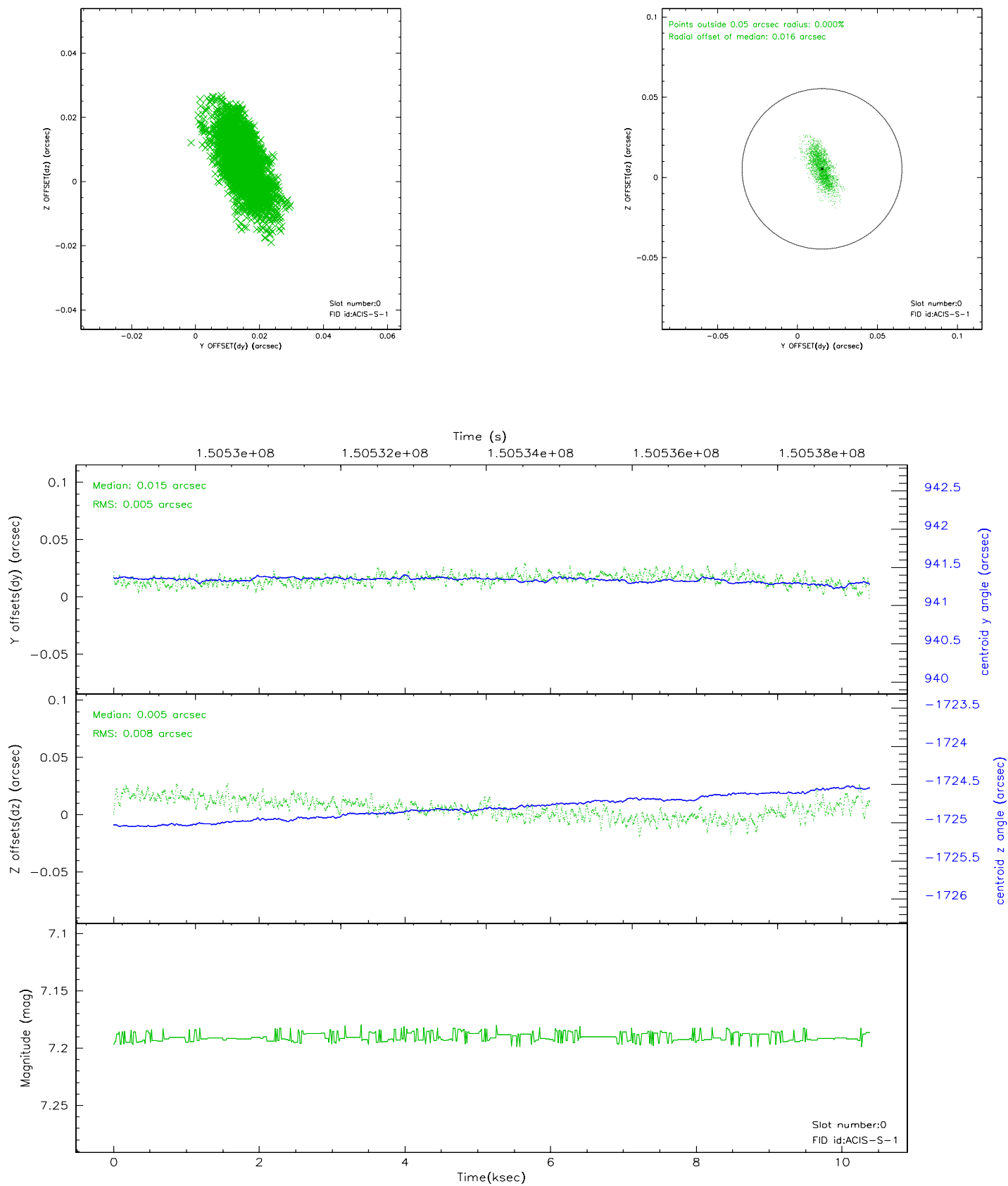


2.4.5 Slot 7

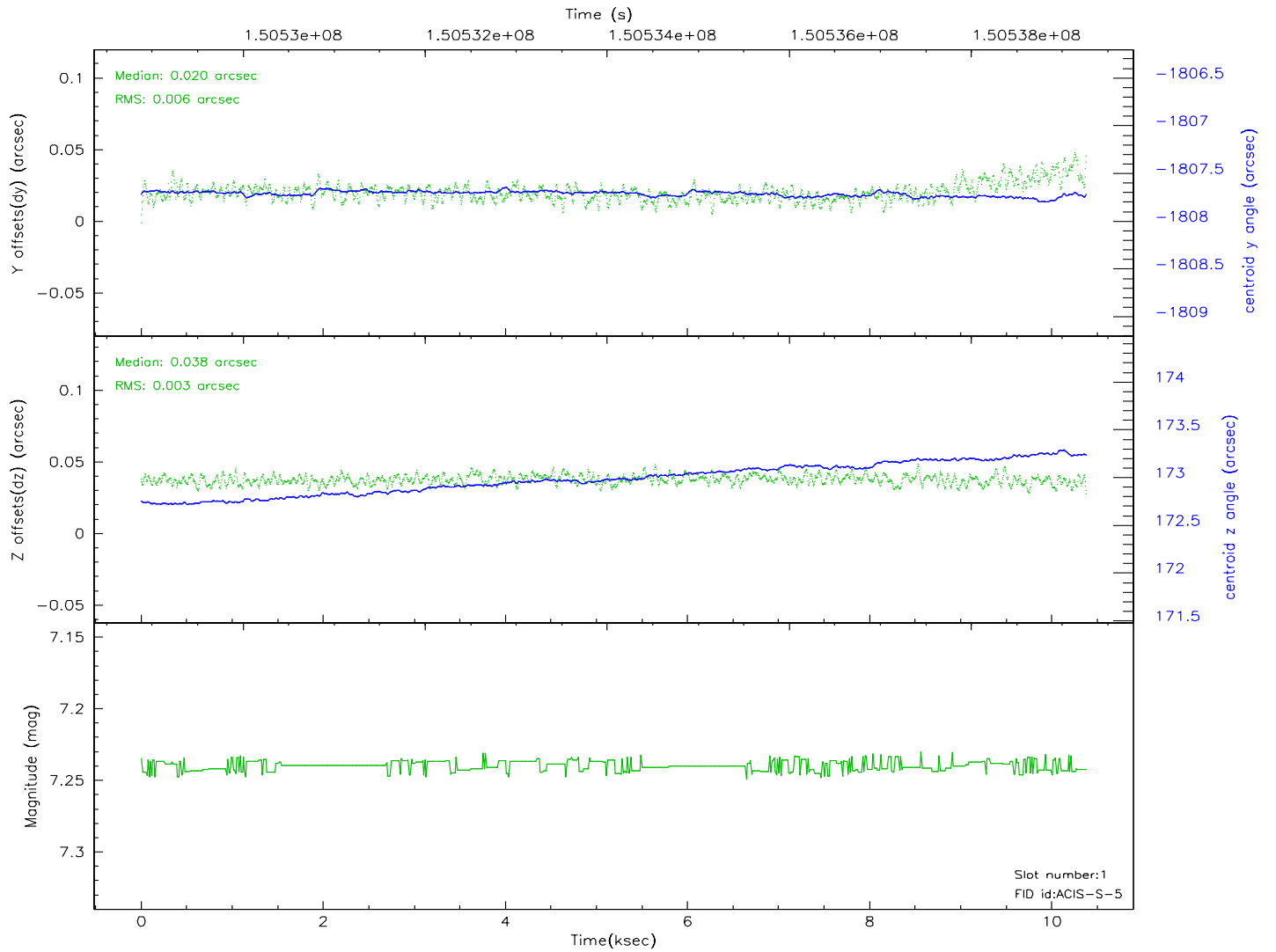
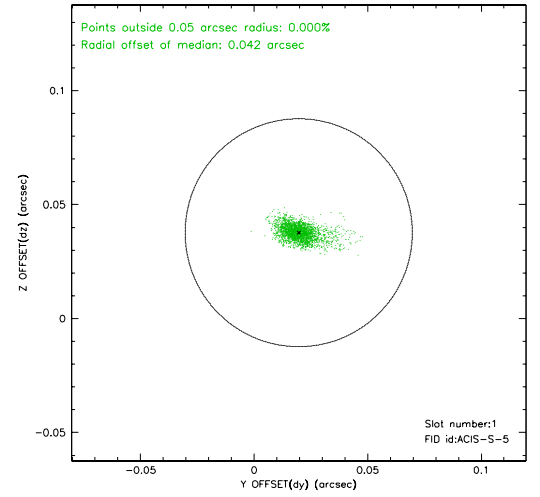
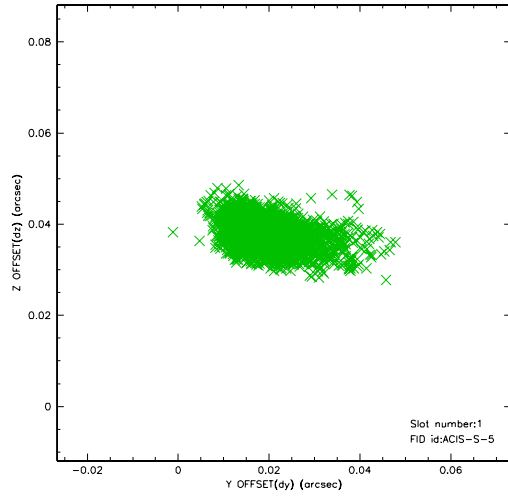


2.5 FID Slots

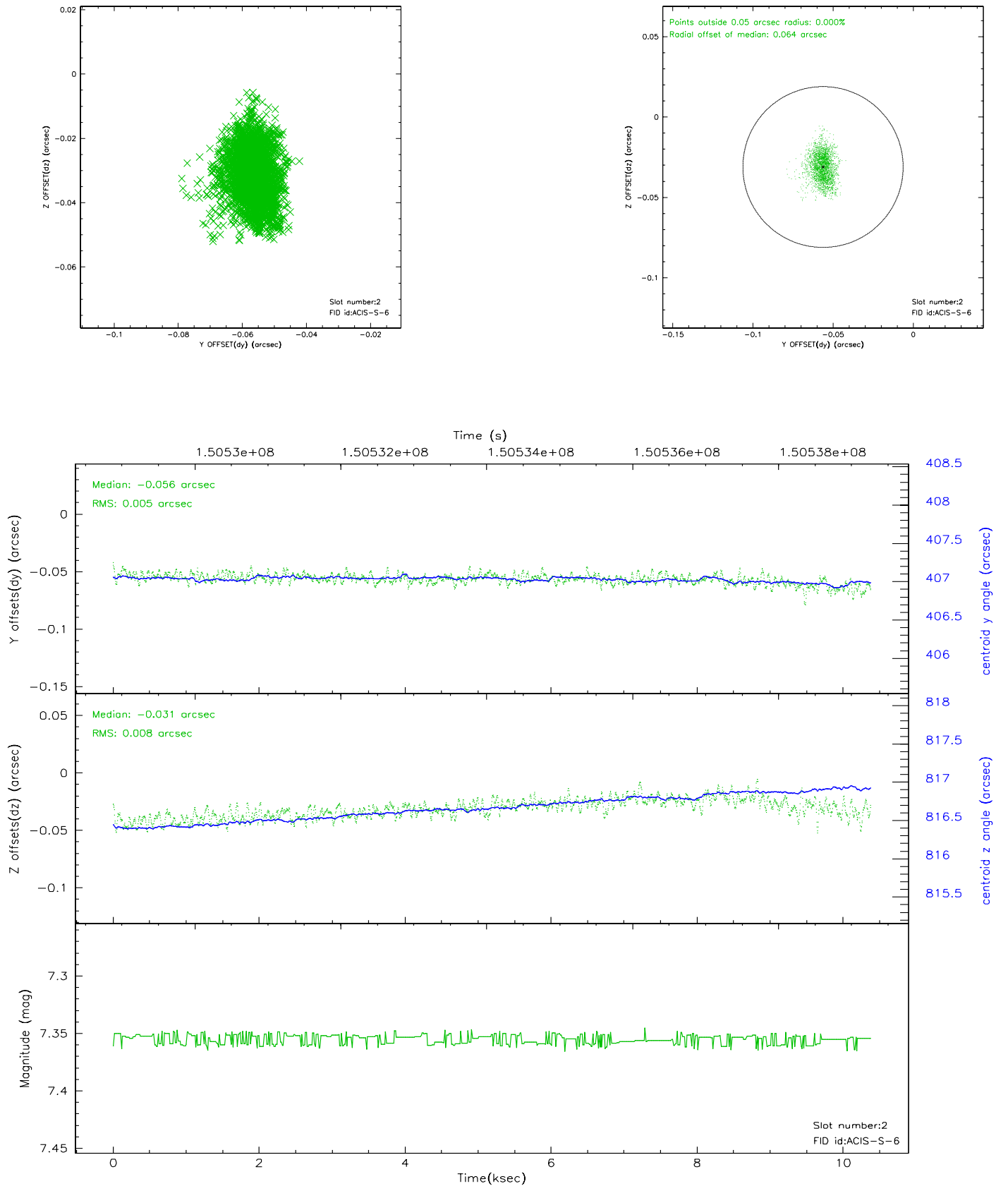
2.5.1 Slot 0



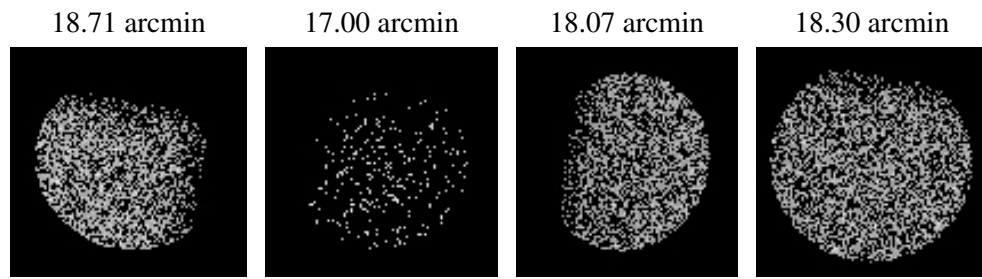
2.5.2 Slot 1



2.5.3 Slot 2



3 Point Sources



A Summary

A.1 Status

V&V Scientist	Beth Sundheim
V&V Date (YYYY-MM-DD)	2006.10.06
V&V Edition	1
V&V Disposition and Status	OK
V&V Charge Time	9.958

A.2 Comments