

V&V Reference Report

L2 ASCDS Version : 8.4.5

Observation 3116 - L2 Version 3
Chandra X-Ray Center

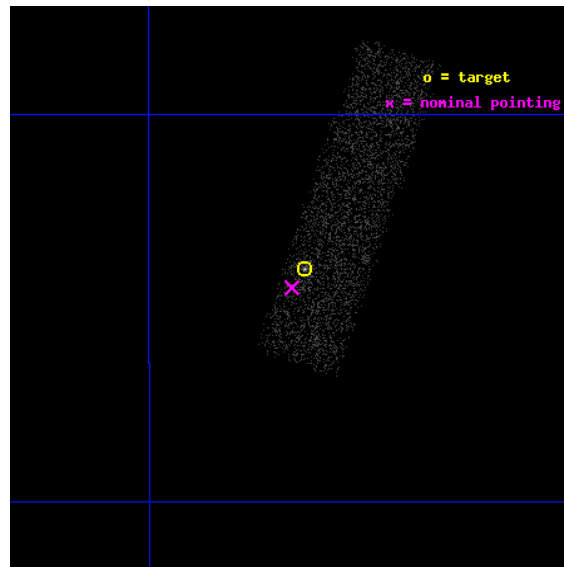
L2 Processing Date : Oct 5 2012

Contents

1	Front	2
2	OBI	3
2.1	OBI	3
2.1.1	Images	3
2.1.2	Bias	3
2.1.3	Parameters	4
2.1.4	Events	4
2.2	Compared Parameters	5
2.3	Aspect	6
2.4	Star Slots	9
2.4.1	Slot 3	9
2.4.2	Slot 4	10
2.4.3	Slot 5	11
2.4.4	Slot 6	12
2.4.5	Slot 7	13
2.5	FID Slots	14
2.5.1	Slot 0	14
2.5.2	Slot 1	15
2.5.3	Slot 2	16
A	Summary	17
A.1	Status	17
A.2	Comments	17

1 Front

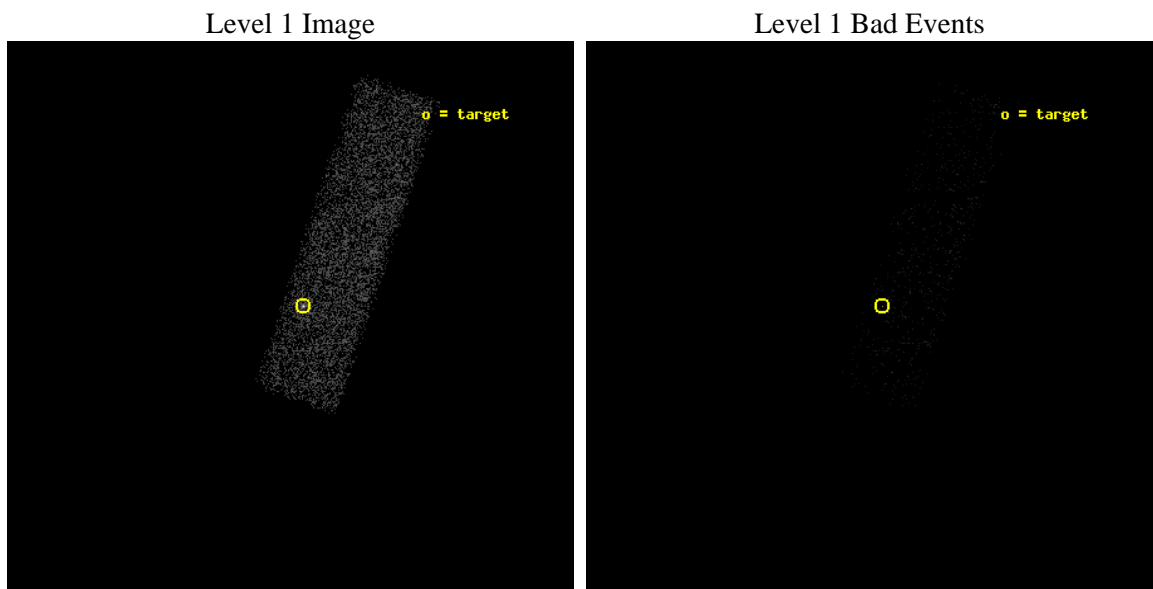
seq_num	700555	Sequence number
obs_id	3116	Observation id
title	A COMPLETE SURVEY FOR X-RAY EMISSION FROM RADIO JETS	Proposal titl
observer	Dr. Herman Marshall	Principal investigator
object	1046-409	Source name
dtcycle	0	
cycle	P	events from which exps? Prim/Second/Both
ra_targ	162.159583	Observer's specified target RA [deg]
dec_targ	-41.233222	Observer's specified target Dec [deg]
ra_nom	162.16714511762	Nominal RA [deg]
dec_nom	-41.241463872106	Nominal Dec [deg]
roll_nom	288.47627741249	Nominal Roll [deg]
revision	3	Processing version of data
ontime	4551.7901668847	Sum of GTIs [s]
livetime	4329.677700832	Livetime [s]
ontime7	4551.7901668847	Sum of GTIs [s]
l2events	5591	Number of level 2 events



2 OBI

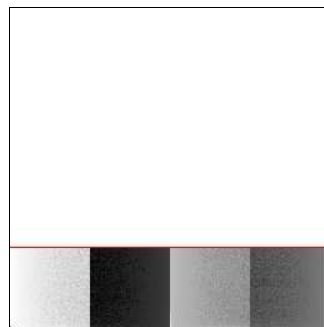
2.1 OBI

2.1.1 Images



2.1.2 Bias

Chip 7



2.1.3 Parameters

obi_num	1	Obi number	sched_exp_time	4700.000000	[s] Scheduled observation exposure time
ascdsver	8.4.5	Processing system revision	ontime	4551.7901668847	Sum of GTIs [s]
caldsver	4.5.2	 	ontime7	4551.7901668847	Sum of GTIs [s]
date	2012-10-05T16:31:30	Date and time of file creation	l1events	10780	Number of level 1 events
revision	3	Processing version of data			

2.1.4 Events

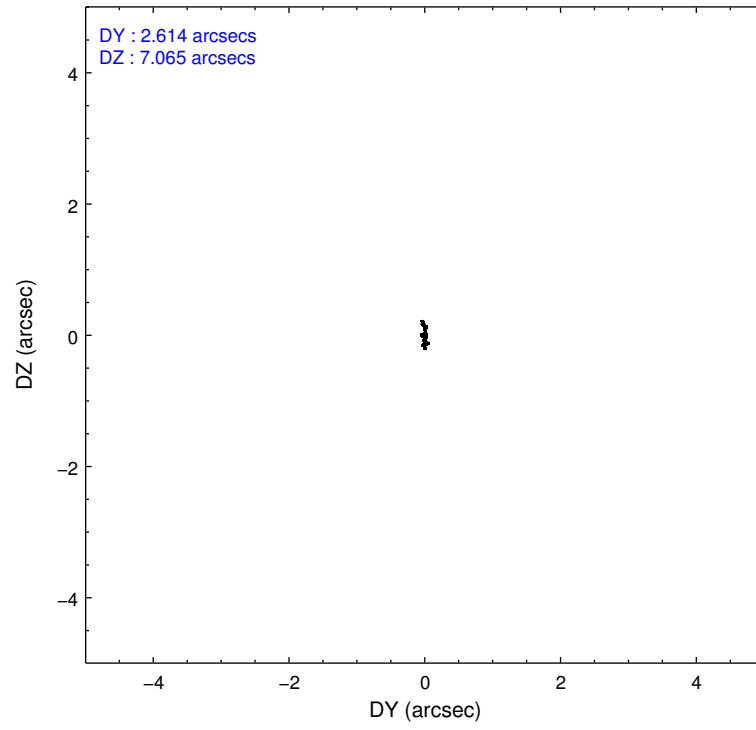
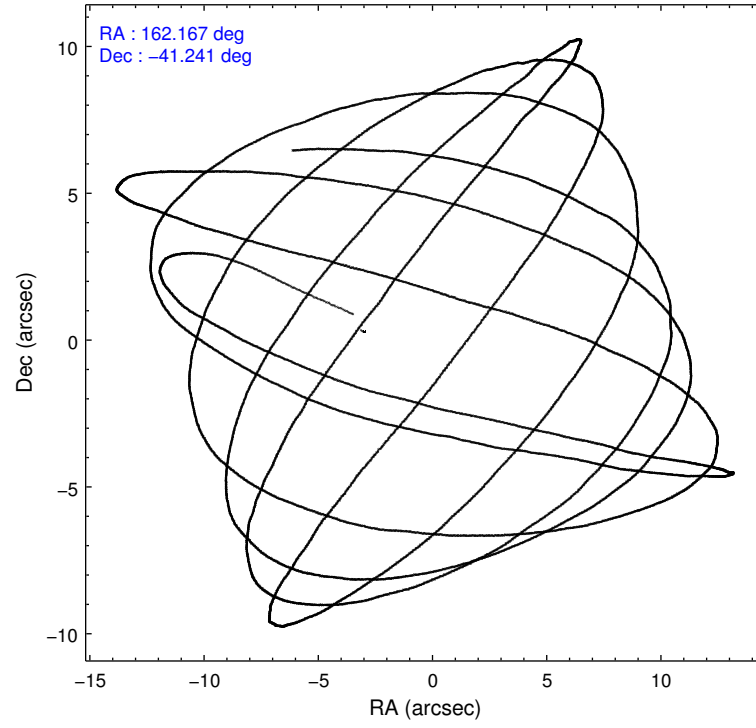
	ccd 7
level 1 events	10780
rejected events	5036
rejected %	46%

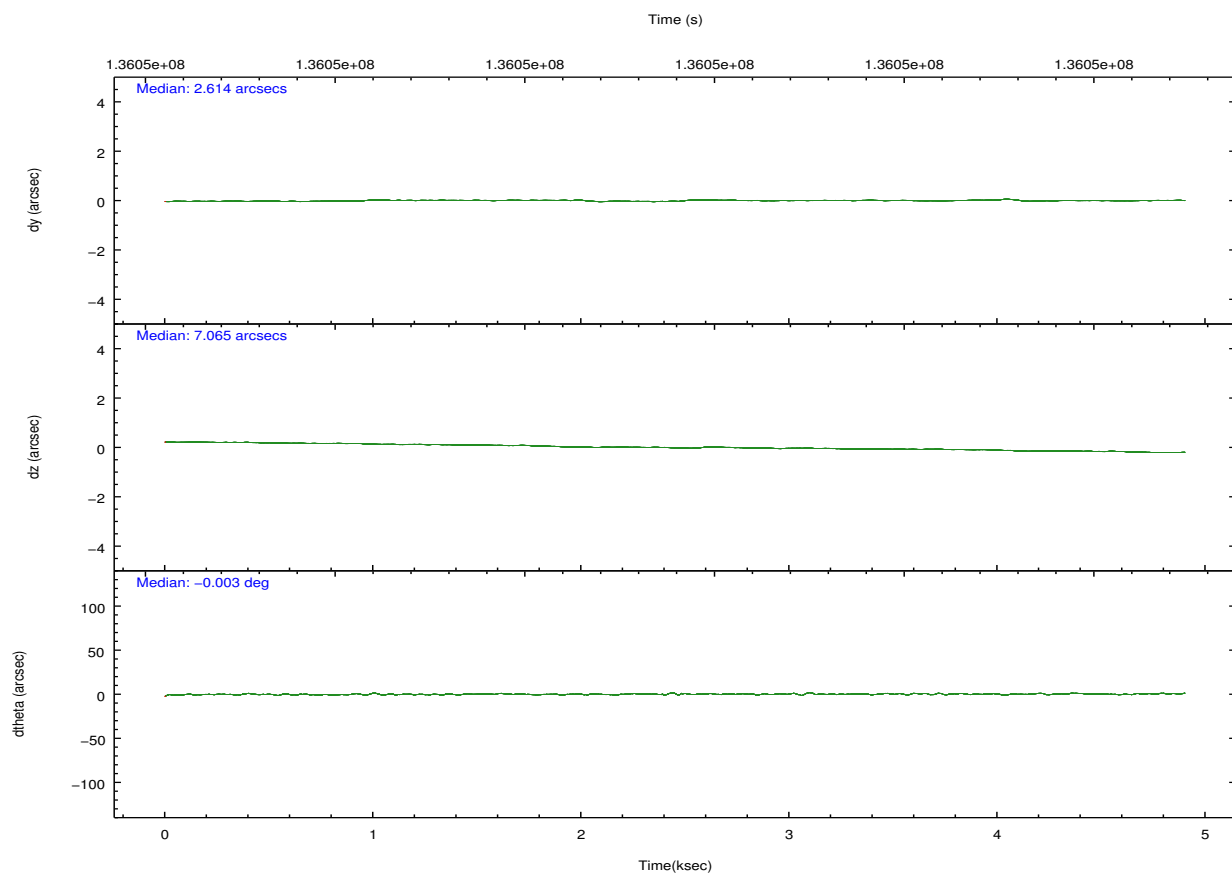
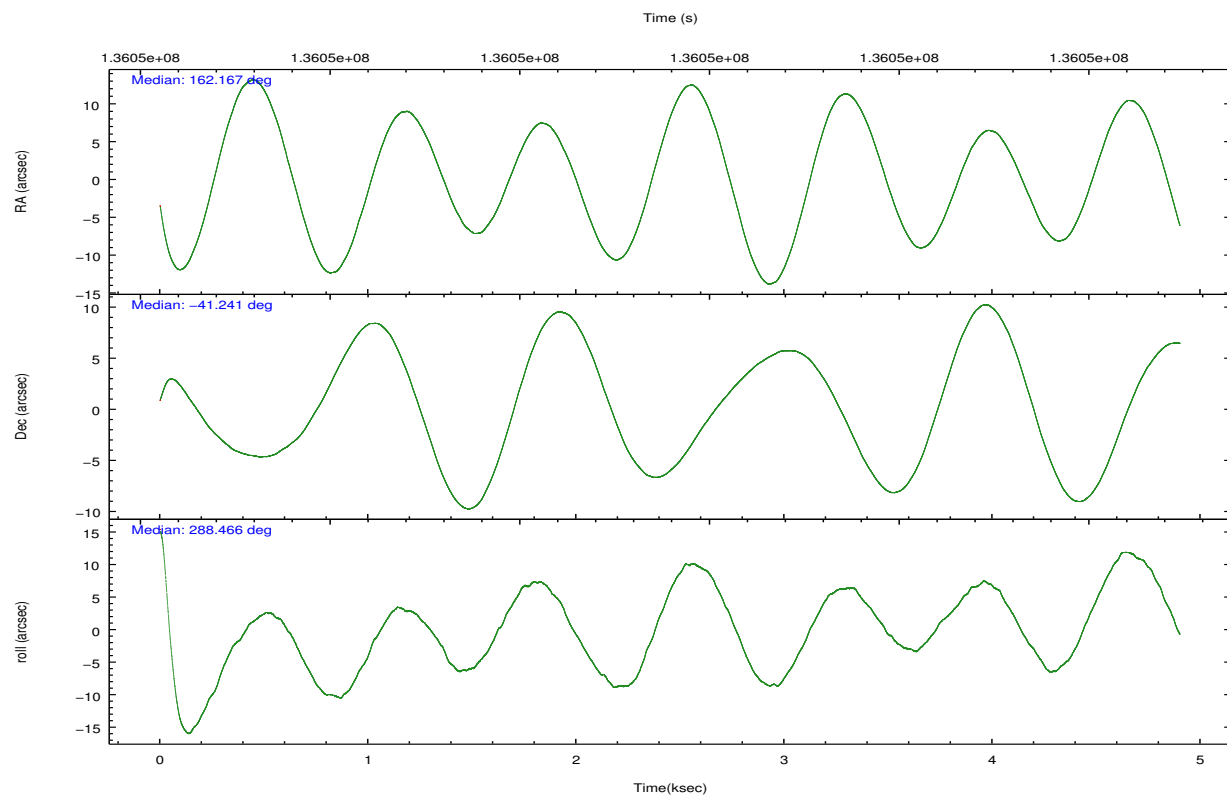
	ccd 7
grade 0 events	719
	6%
grade 1 events	17
	0%
grade 2 events	1166
	10%
grade 3 events	621
	5%
grade 4 events	638
	5%
grade 5 events	855
	7%
grade 6 events	2600
	24%
grade 7 events	4164
	38%

2.2 Compared Parameters

Parameter	Planned	Actual	Parameter	Planned	Actual
Instrument	ACIS	ACIS	Obspar format version number	7	7
Detector	ACIS-7	ACIS-7	Obspar file type	PREDICTED	ACTUAL
Grating	NONE	NONE	Obspar update status	NONE	UPDATED
Data mode	FAINT	FAINT	Number of optional ACIS chips dropped	0	0
Observation mode	POINTING	POINTING	On-chip summing requested	N	N
[deg] Pointing RA	162.139642	162.1671451176163	Subarray requested	CUSTOM	1/4
[deg] Pointing Dec	-41.223612	-41.24146387210556	Subarray start row	1	1
[deg] Pointing Roll	288.301445	288.4762774124873	Subarray row count	256	256
[mm] SIM focus pos	-0.684267	-0.6828225247311905	Alternating exposures requested	N	N
[mm] SIM defocus	0	0.001444936568705701	[s] Primary exposure time	0.000000	0.8
[mm] SIM translation stage pos	-178.632523	-178.6370735452349			
[mm] SIM translation stage offset	-11.5	-11.49544903777291			
[s] Observation start time (MET)	136047548.184000	136046744.05867			
Observation start date	2002-04-24T14:58:04	2002-04-24T14:45:44			
[s] Observation end time (MET)	136052248.184000	136052740.30891			
Observation end date	2002-04-24T16:16:24	2002-04-24T16:25:40			
Read mode	TIMED	TIMED			

2.3 Aspect



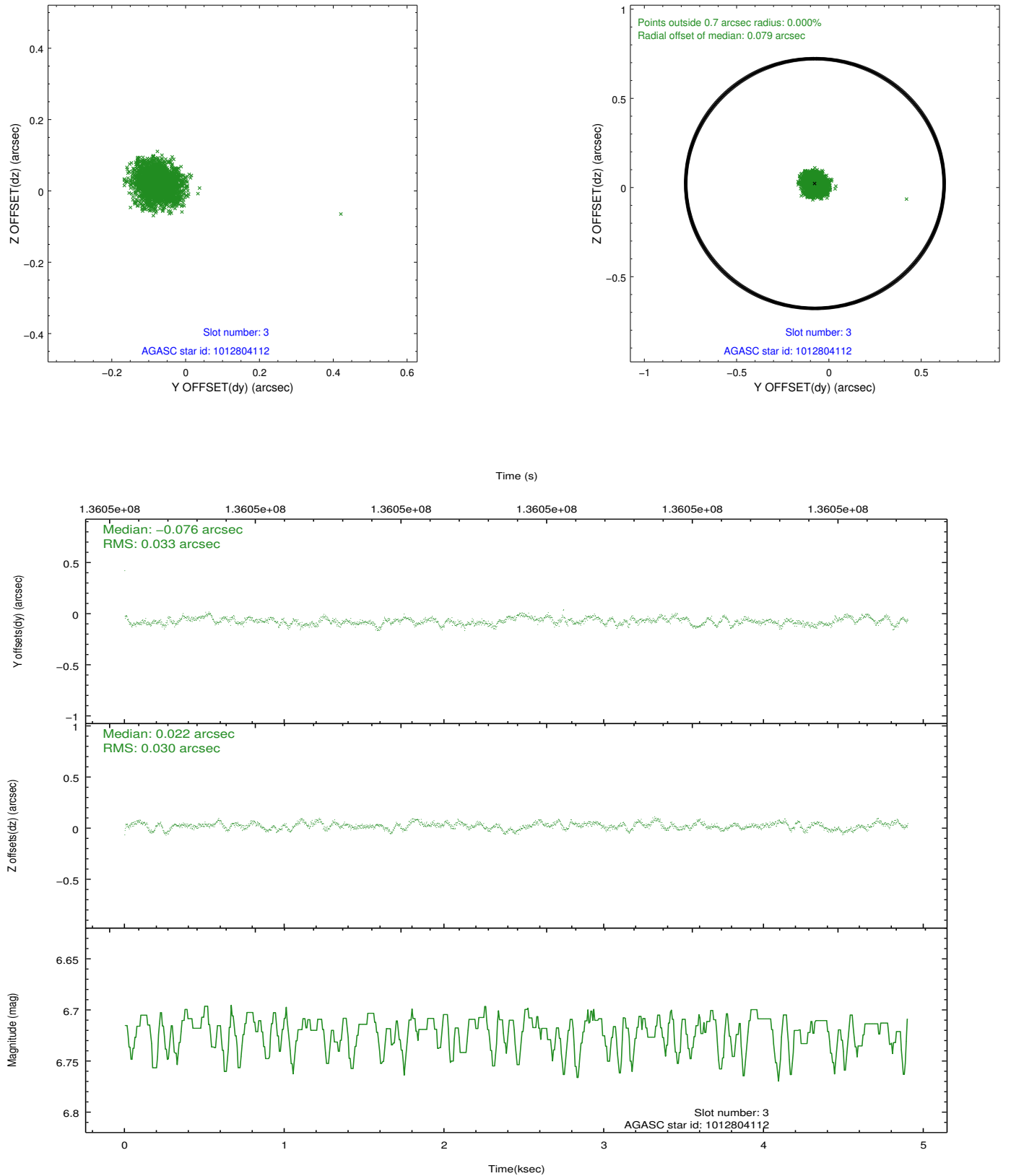


Slot Statistics

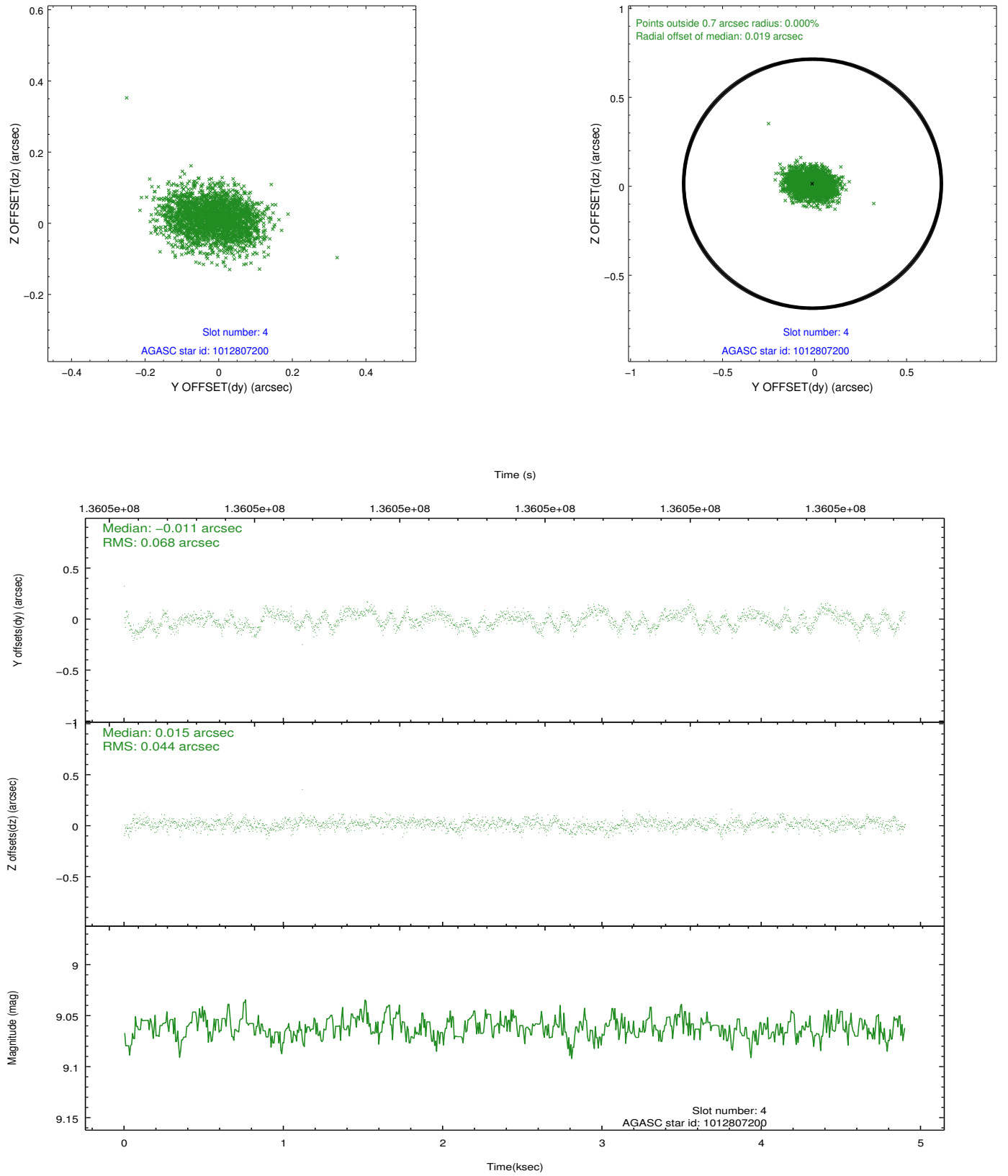
slot	status	id	mag	n_pts	med_dy	med_dz	dr1	dr2	ra	dec	mean_y	mean_z
0	FID	ACIS-S-1	7.19	1195	0.050	0.137	0.007	0.013	0.000000	0.000000	941.62	-1960.41
1	FID	ACIS-S-5	7.23	1196	0.004	0.104	0.006	0.012	0.000000	0.000000	-1806.64	-64.27
2	FID	ACIS-S-6	7.44	1196	-0.075	-0.230	0.008	0.013	0.000000	0.000000	405.82	580.67
3	GUIDE	1012804112	6.72	2392	-0.076	0.022	0.048	0.075	161.460650	-40.973381	-1427.13	-1471.86
4	GUIDE	1012807200	9.06	2389	-0.011	0.015	0.087	0.137	162.449393	-40.833359	-1067.62	1240.94
5	GUIDE	1013460672	9.39	2391	0.032	0.063	0.088	0.139	163.012276	-41.531307	1801.21	1882.03
6	GUIDE	1012928136	9.99	2392	0.015	-0.103	0.138	0.225	162.910358	-40.863455	-562.23	2397.00
7	GUIDE	1013332896	9.59	2389	0.037	0.003	0.104	0.163	161.285767	-41.280554	-519.11	-2260.19

2.4 Star Slots

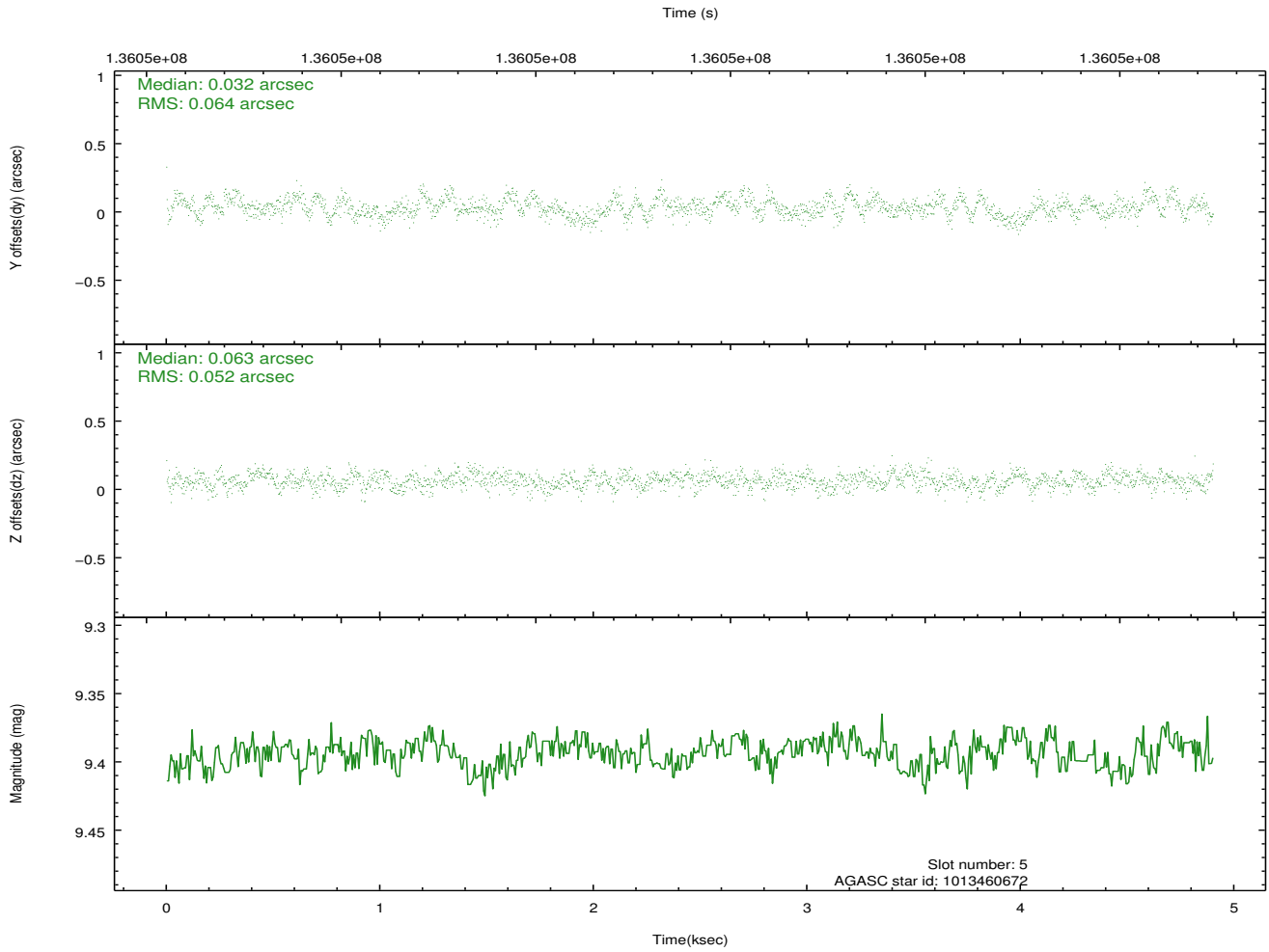
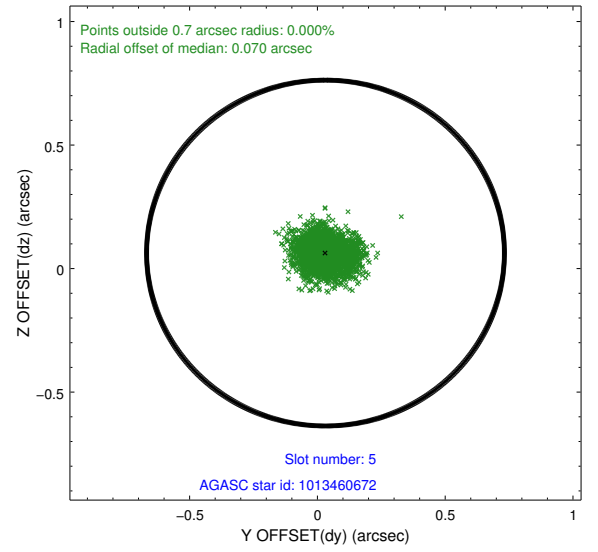
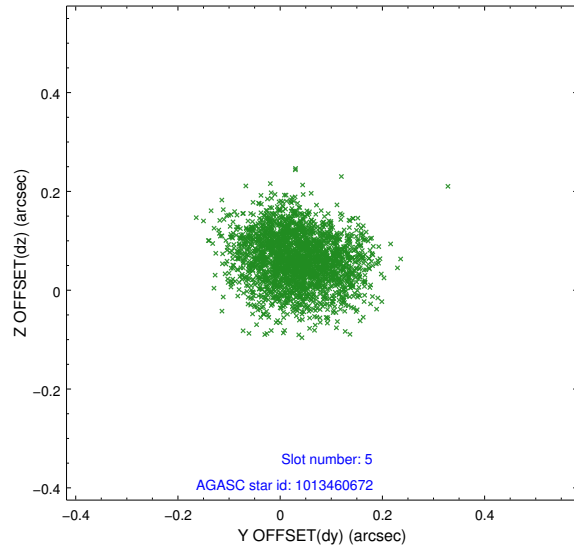
2.4.1 Slot 3



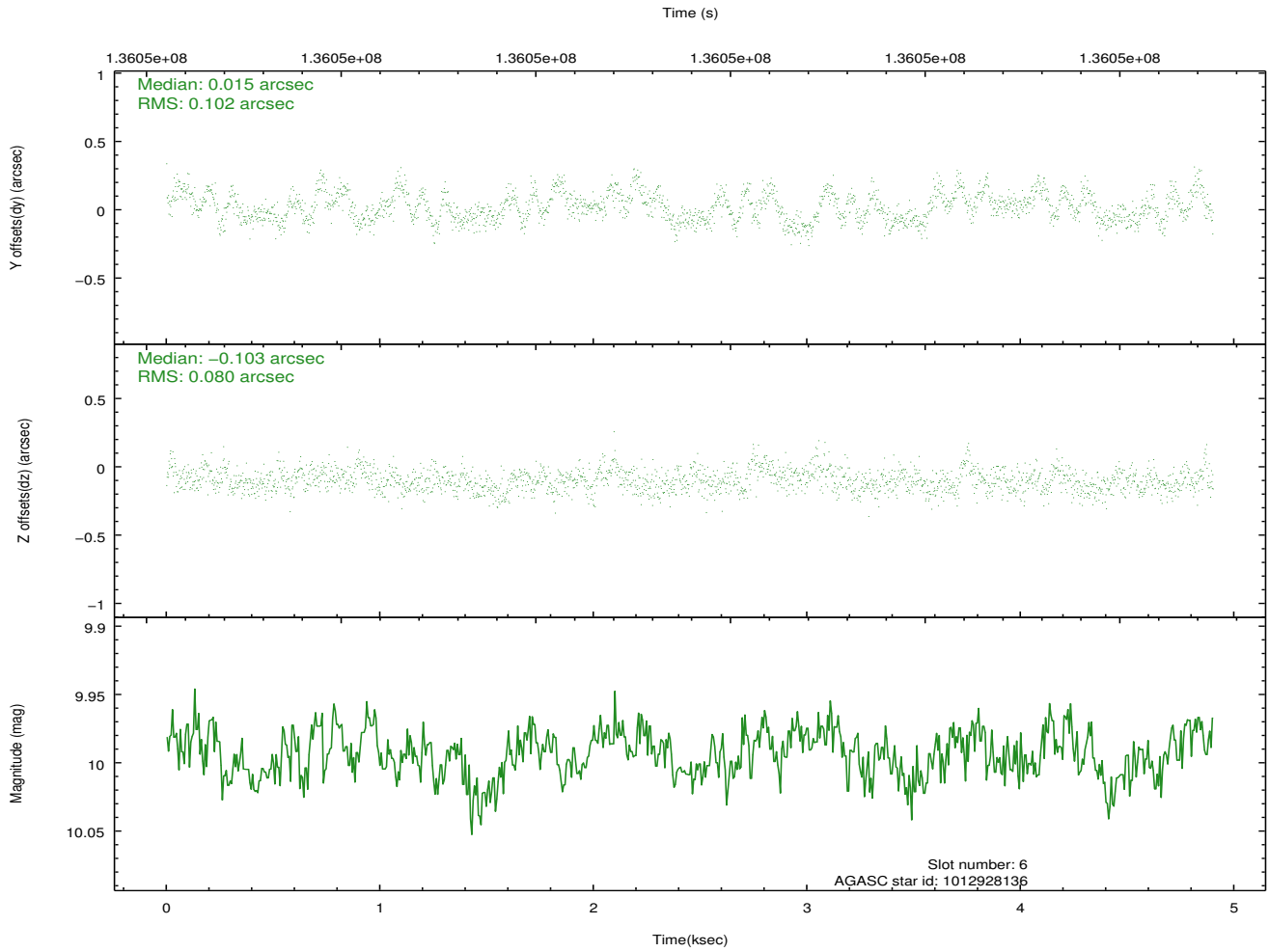
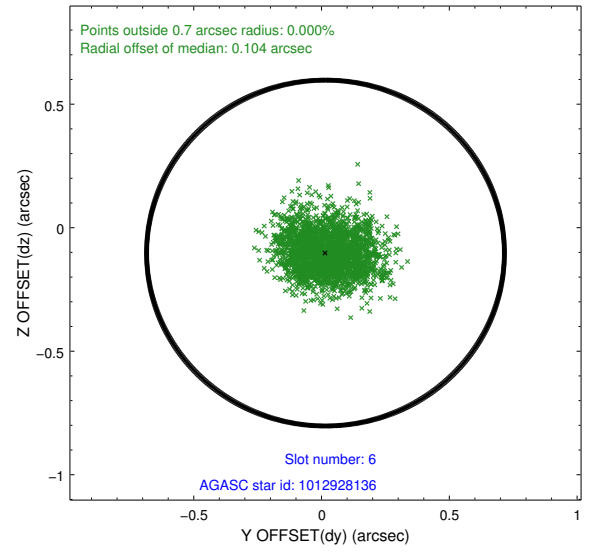
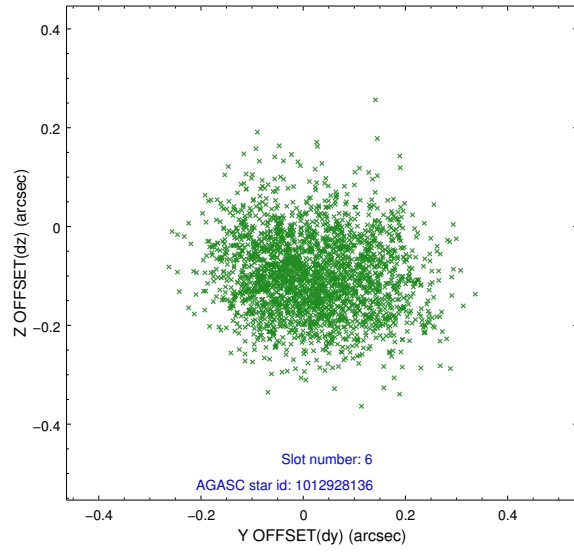
2.4.2 Slot 4



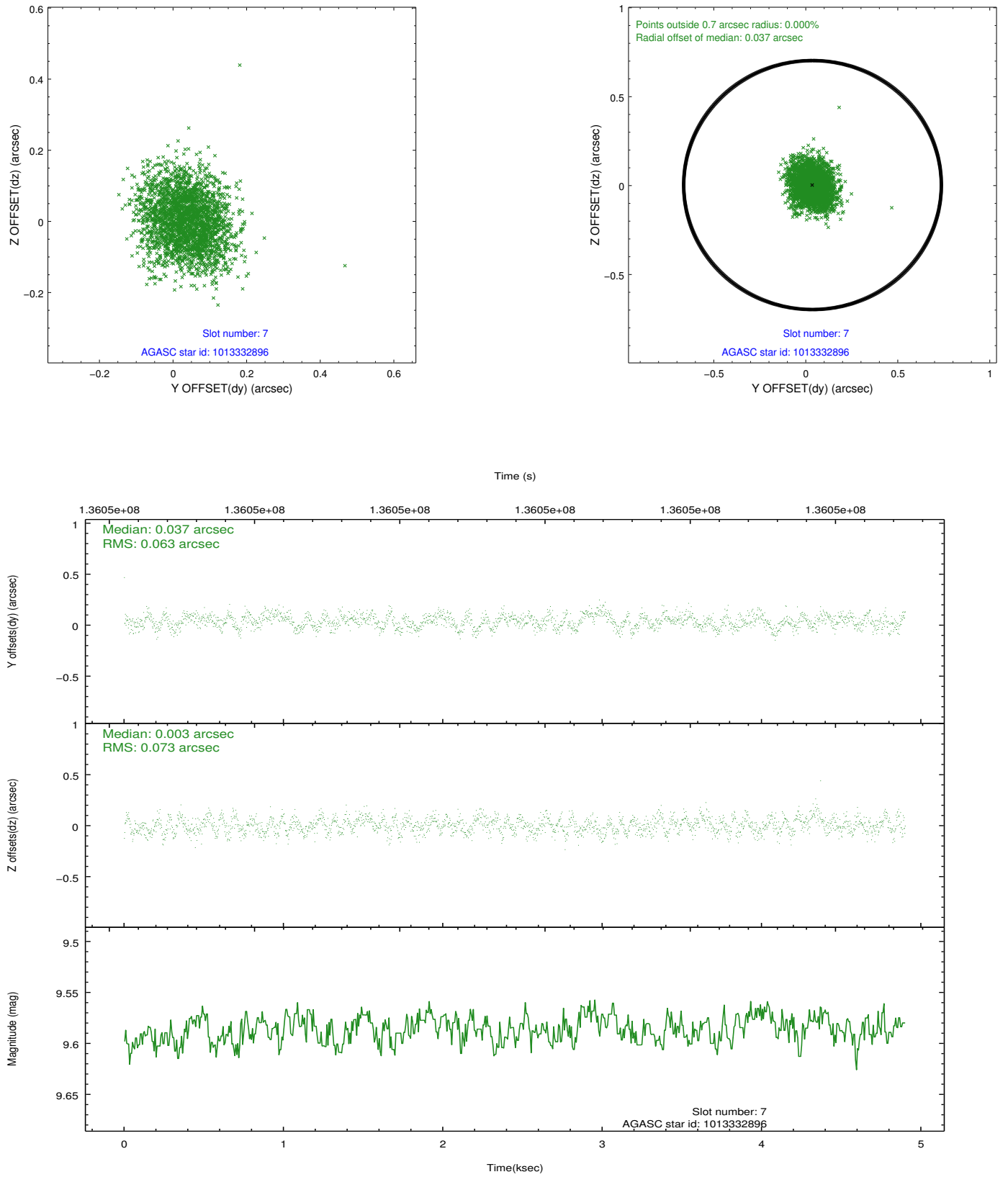
2.4.3 Slot 5



2.4.4 Slot 6

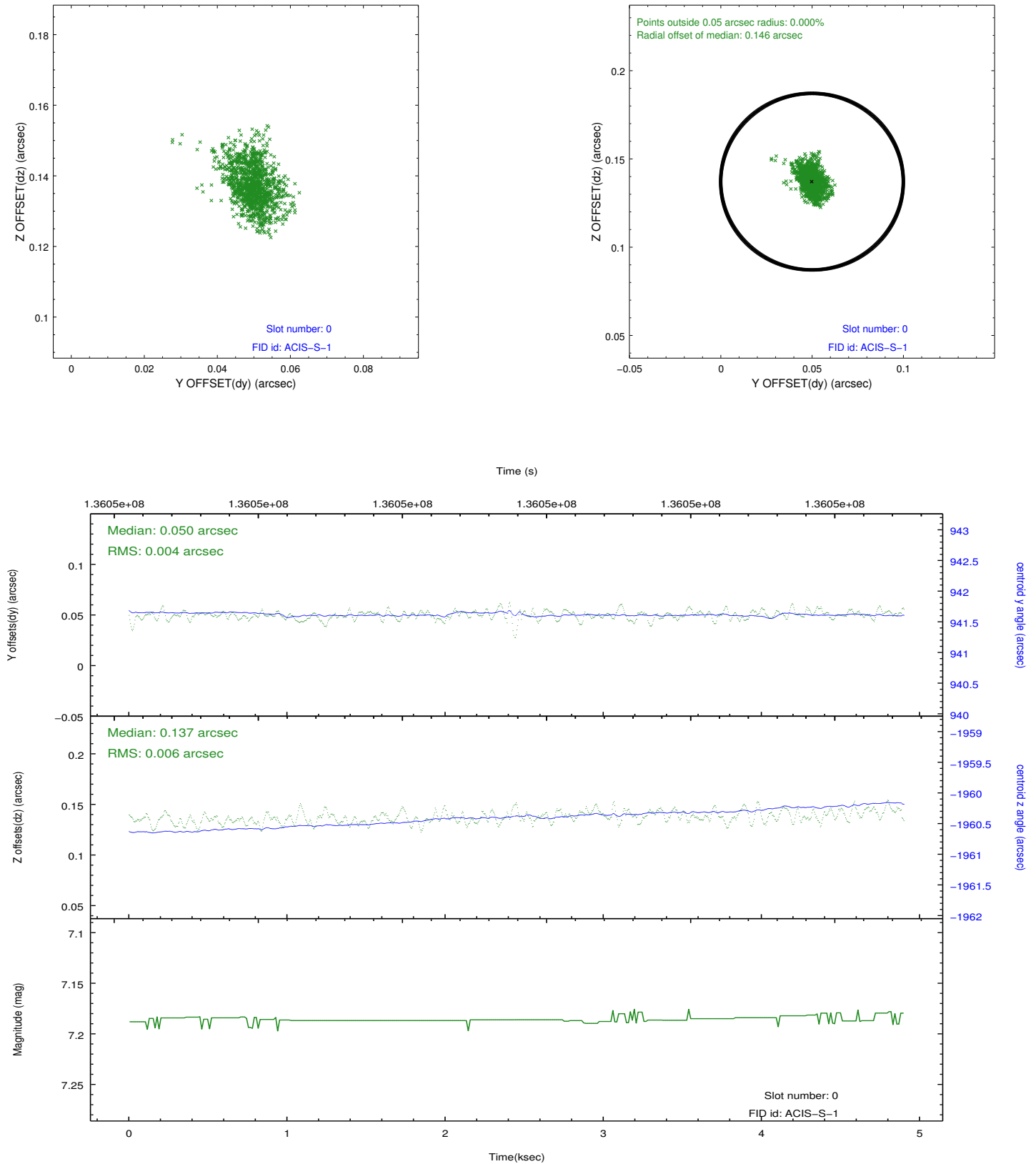


2.4.5 Slot 7

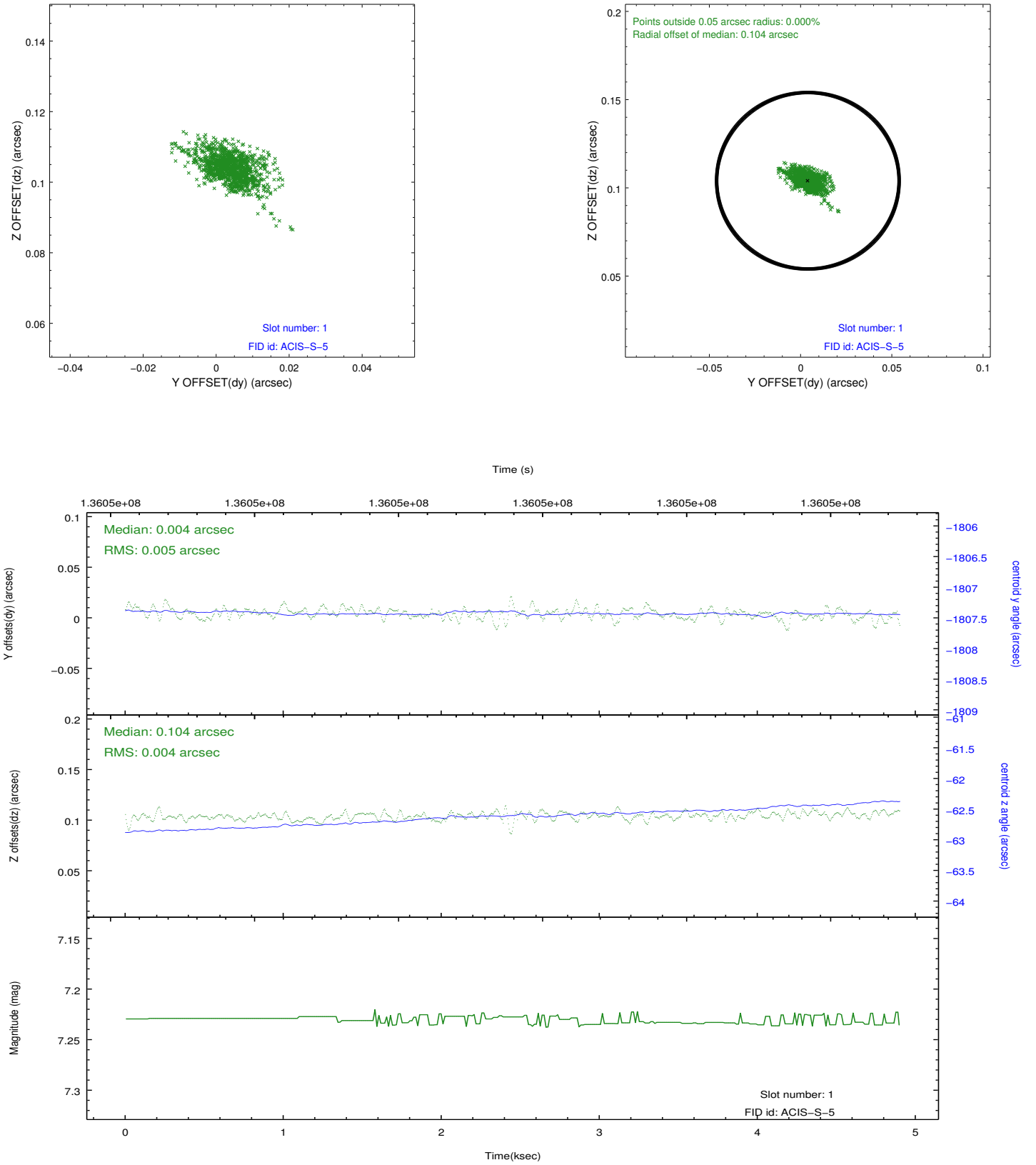


2.5 FID Slots

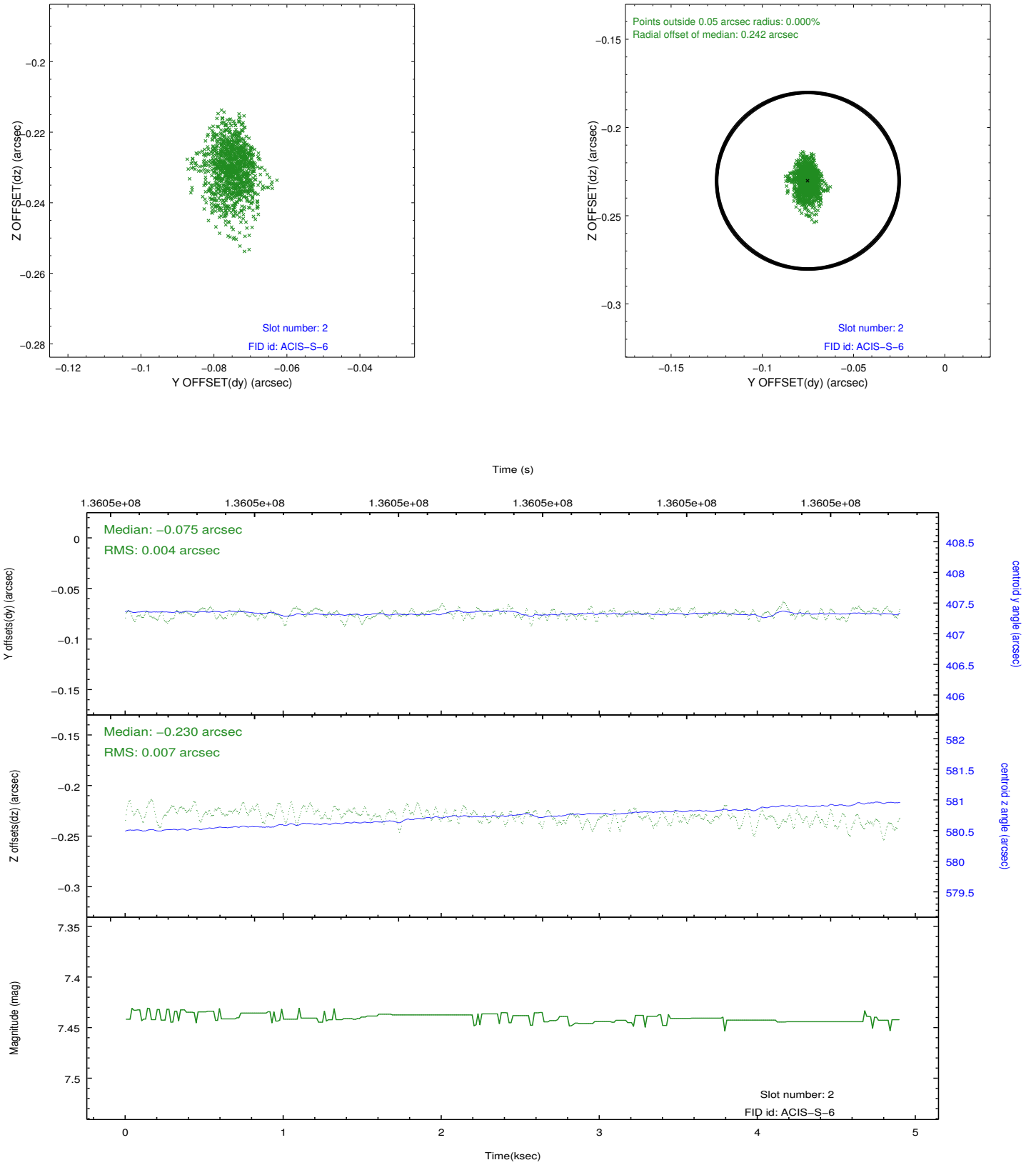
2.5.1 Slot 0



2.5.2 Slot 1



2.5.3 Slot 2



A Summary

A.1 Status

V&V Scientist	Beth Sundheim
V&V Date (YYYY-MM-DD)	2012.10.11
V&V Edition	1
V&V Disposition and Status	OK
V&V Charge Time	4.552

A.2 Comments