

V&V Reference Report

L2 ASCDS Version : 8.4.5

Observation 3108 - L2 Version 4
Chandra X-Ray Center

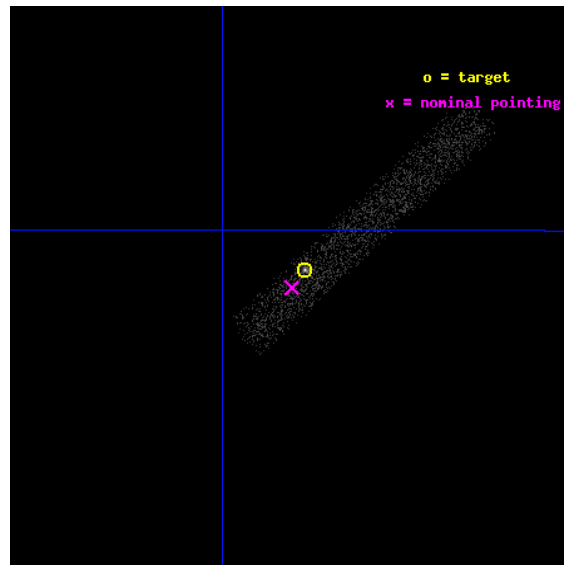
L2 Processing Date : Oct 15 2012

Contents

1	Front	2
2	OBI	3
2.1	OBI	3
2.1.1	Images	3
2.1.2	Bias	3
2.1.3	Parameters	4
2.1.4	Events	4
2.2	Compared Parameters	5
2.3	Aspect	6
2.4	Star Slots	9
2.4.1	Slot 3	9
2.4.2	Slot 5	10
2.4.3	Slot 6	11
2.4.4	Slot 7	12
2.5	FID Slots	13
2.5.1	Slot 0	13
2.5.2	Slot 1	14
2.5.3	Slot 2	15
A	Summary	16
A.1	Status	16
A.2	Comments	16

1 Front

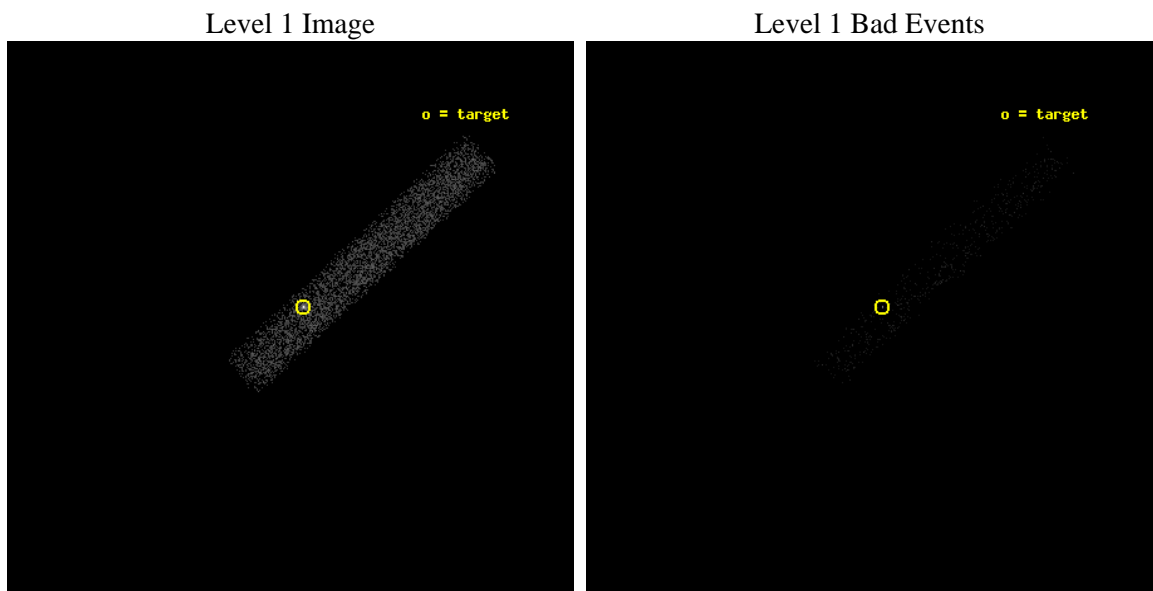
seq_num	700547	Sequence number
obs_id	3108	Observation id
title	A COMPLETE SURVEY FOR X-RAY EMISSION FROM RADIO JETS	Proposal titl
observer	Dr. Herman Marshall	Principal investigator
object	0208-512	Source name
dtcycle	0	
cycle	P	events from which exps? Prim/Second/Both
ra_targ	32.6925	Observer's specified target RA [deg]
dec_targ	-51.017194	Observer's specified target Dec [deg]
ra_nom	32.701660571153	Nominal RA [deg]
dec_nom	-51.024928001782	Nominal Dec [deg]
roll_nom	317.08598600806	Nominal Roll [deg]
revision	4	Processing version of data
ontime	5549.035922721	Sum of GTIs [s]
livetime	5032.682679776	Livetime [s]
ontime7	5549.035922721	Sum of GTIs [s]
l2events	4772	Number of level 2 events



2 OBI

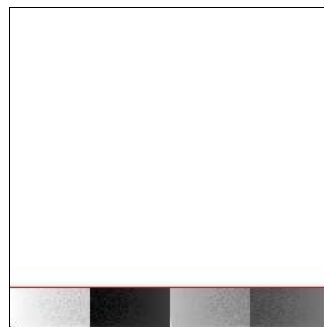
2.1 OBI

2.1.1 Images



2.1.2 Bias

Chip 7



2.1.3 Parameters

obi_num	0	Obi number	sched_exp_time	5000.000000	[s] Scheduled observation exposure time
ascdsver	8.4.5	Processing system revision	ontime	5549.035922721	Sum of GTIs [s]
caldsver	4.5.2	 	ontime7	5549.035922721	Sum of GTIs [s]
date	2012-10-15T15:02:13	Date and time of file creation	l1events	8792	Number of level 1 events
revision	4	Processing version of data			

2.1.4 Events

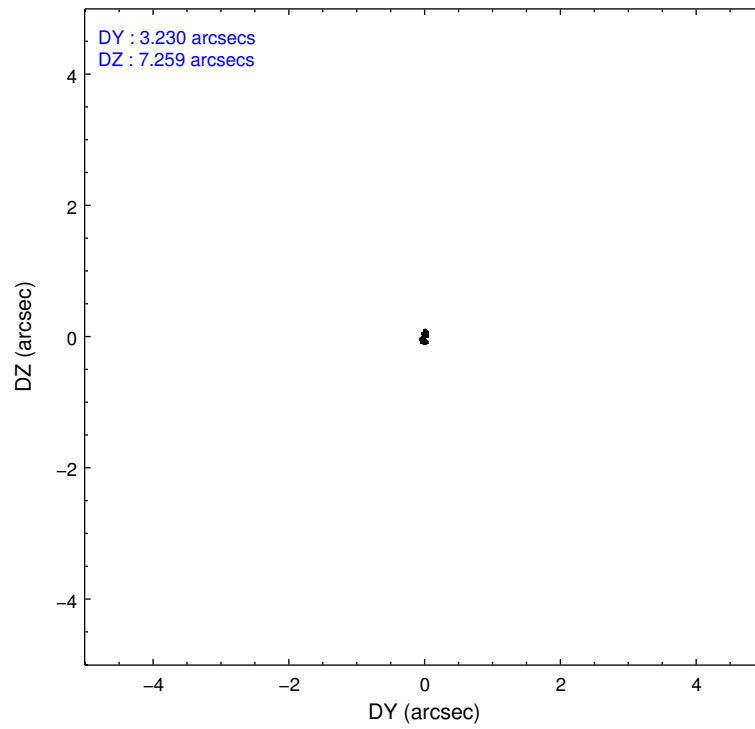
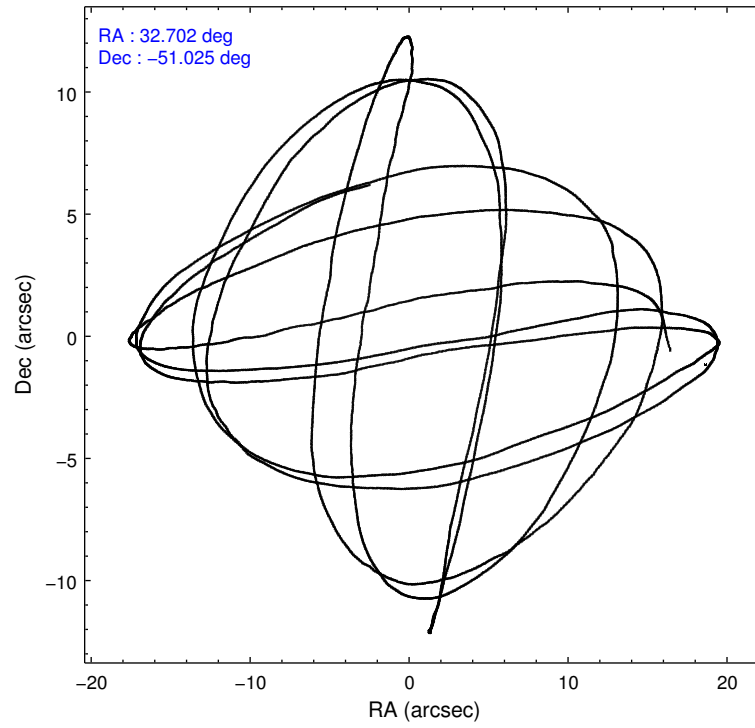
	ccd 7
level 1 events	8792
rejected events	3923
rejected %	44%

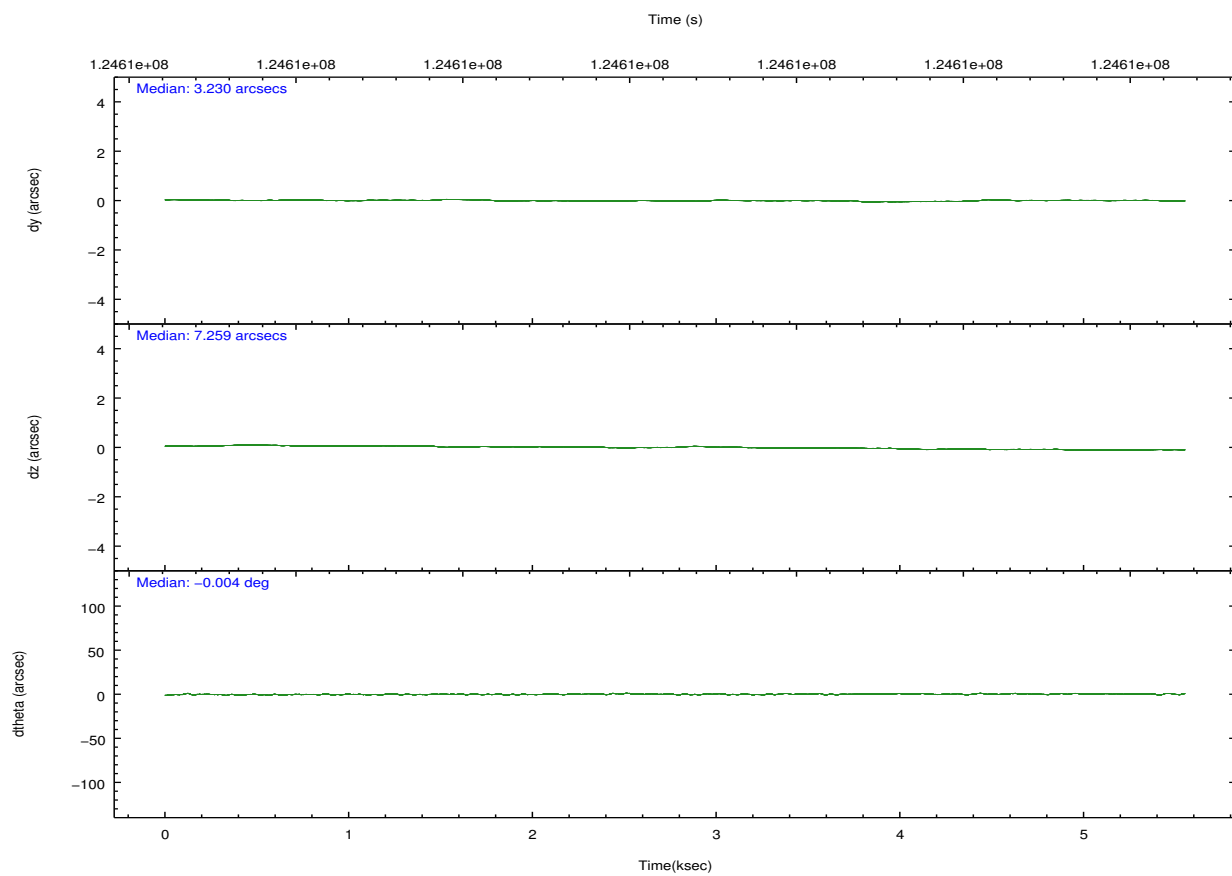
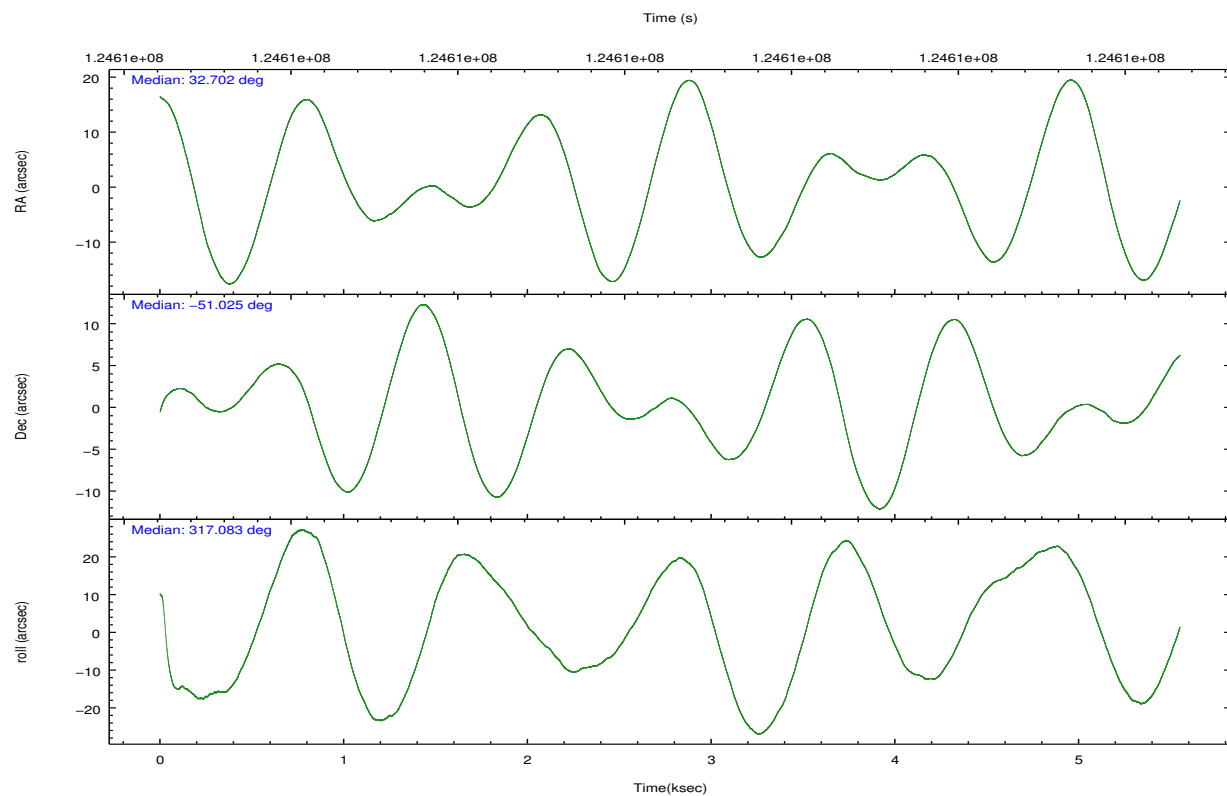
	ccd 7
grade 0 events	807
	9%
grade 1 events	8
	0%
grade 2 events	1058
	12%
grade 3 events	688
	7%
grade 4 events	656
	7%
grade 5 events	582
	6%
grade 6 events	1877
	21%
grade 7 events	3116
	35%

2.2 Compared Parameters

Parameter	Planned	Actual	Parameter	Planned	Actual
Instrument	ACIS	ACIS	Obspar format version number	7	7
Detector	ACIS-7	ACIS-7	Obspar file type	PREDICTED	ACTUAL
Grating	NONE	NONE	Obspar update status	NONE	UPDATED
Data mode	FAINT	FAINT	Number of optional ACIS chips dropped	0	0
Observation mode	POINTING	POINTING	On-chip summing requested	N	N
[deg] Pointing RA	32.659426	32.70166057115294	Subarray requested	CUSTOM	1/8
[deg] Pointing Dec	-51.019178	-51.02492800178202	Subarray start row	1	1
[deg] Pointing Roll	316.896478	317.0859860080621	Subarray row count	128	128
[mm] SIM focus pos	-0.684267	-0.6828225247311905	Alternating exposures requested	N	N
[mm] SIM defocus	0	0.001444936568705701	[s] Primary exposure time	0.000000	0.4
[mm] SIM translation stage pos	-178.932523	-178.9387913814221			
[mm] SIM translation stage offset	-11.2	-11.19373120158573			
[s] Observation start time (MET)	124609048.184000	124607903.49679			
Observation start date	2001-12-13T05:36:24	2001-12-13T05:18:23			
[s] Observation end time (MET)	124614048.184000	124615188.68458			
Observation end date	2001-12-13T06:59:44	2001-12-13T07:19:48			
Read mode	TIMED	TIMED			

2.3 Aspect



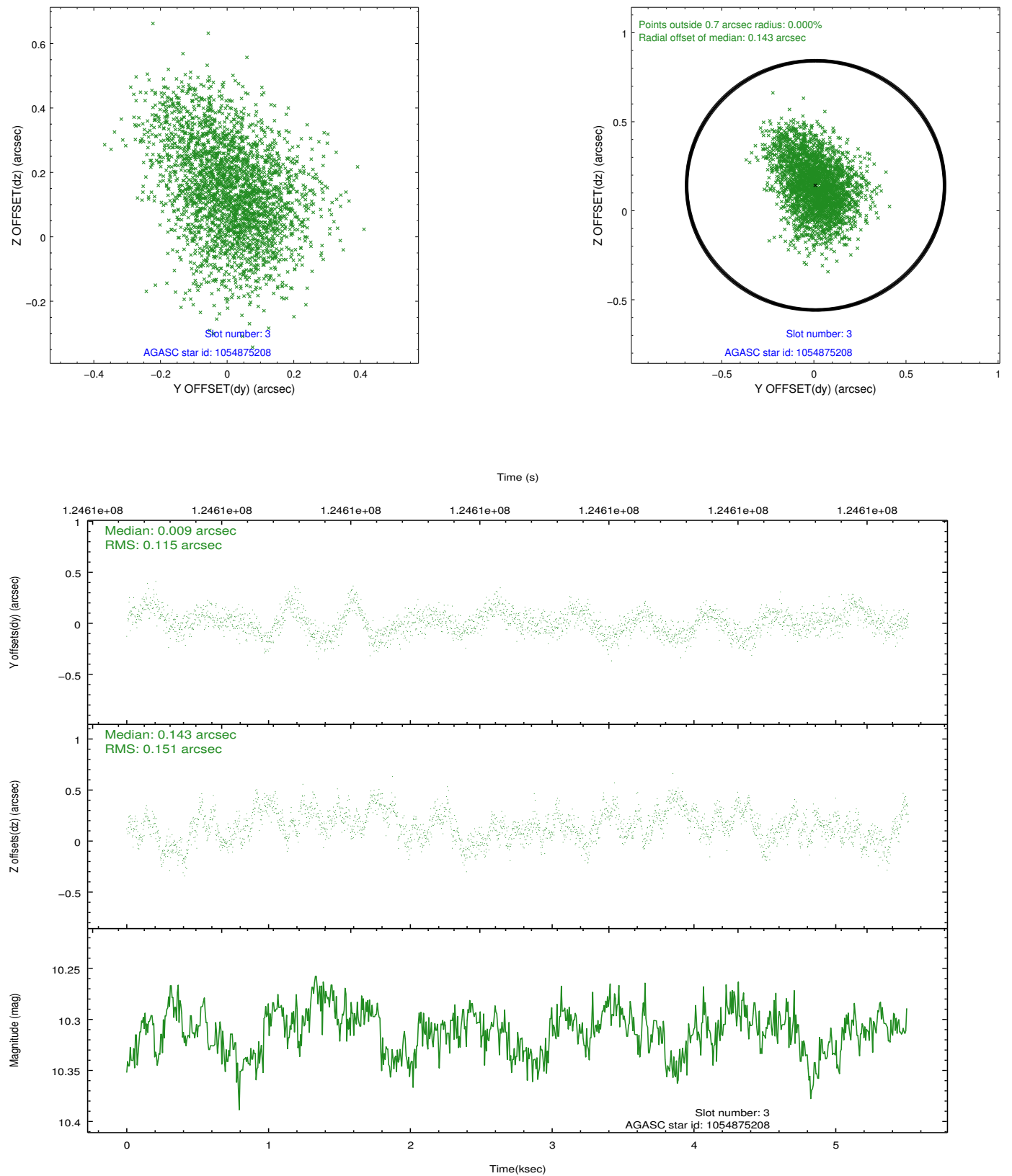


Slot Statistics

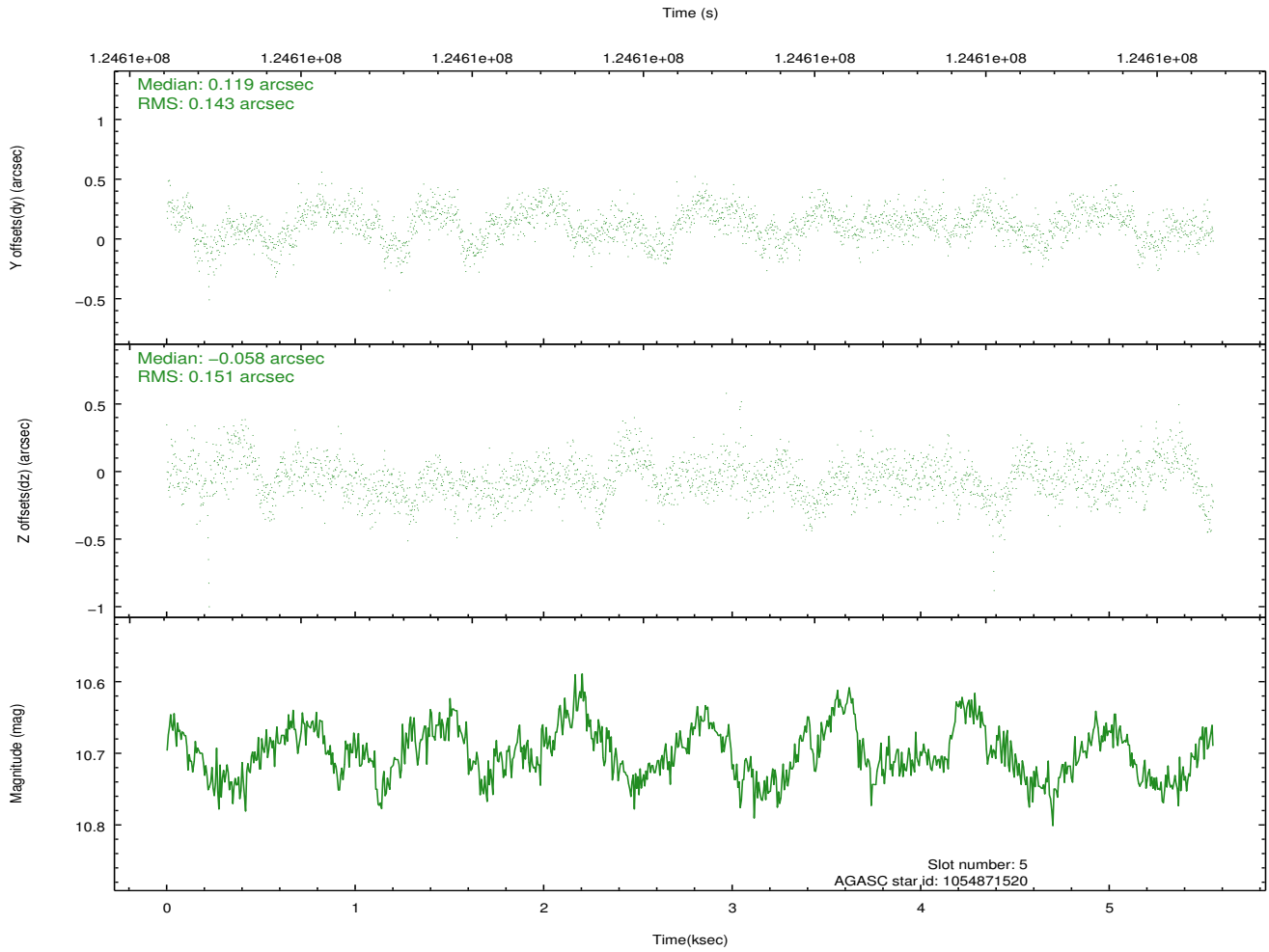
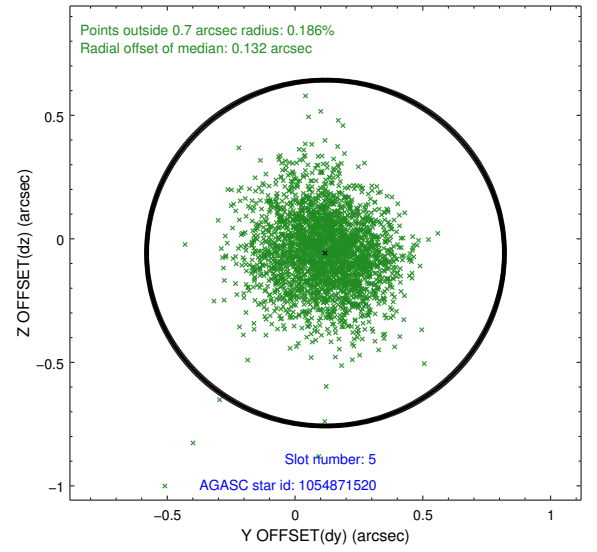
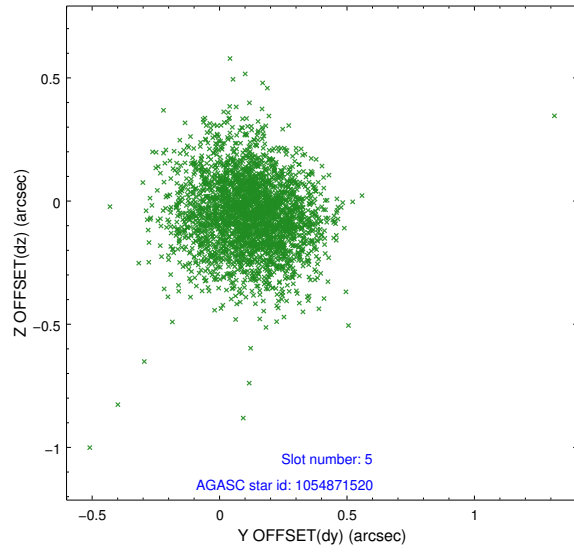
slot	status	id	mag	n_pts	med_dy	med_dz	dr1	dr2	ra	dec	mean_y	mean_z
0	FID	ACIS-S-2	7.08	1354	-0.055	-0.336	0.007	0.011	0.000000	0.000000	-755.10	-1959.20
1	FID	ACIS-S-4	7.17	1354	0.004	0.116	0.005	0.010	0.000000	0.000000	2157.74	-51.57
2	FID	ACIS-S-5	7.23	1354	0.020	0.228	0.007	0.011	0.000000	0.000000	-1806.48	-56.56
3	GUIDE	1054875208	10.31	2677	0.009	0.143	0.201	0.333	32.873622	-51.609510	1802.90	-1224.53
4	OMITTED		0.00	0	0.000	0.000	0.000	0.000	0.000000	0.000000	0.00	0.00
5	GUIDE	1054871520	10.70	2684	0.119	-0.058	0.216	0.354	33.144266	-50.787431	239.25	1360.24
6	GUIDE	1054869232	10.18	2700	-0.050	-0.071	0.119	0.197	31.411033	-51.003865	-2085.53	-1909.13
7	GUIDE	1054872928	9.64	2703	-0.065	-0.015	0.125	0.210	31.896046	-51.436510	-218.44	-2274.72

2.4 Star Slots

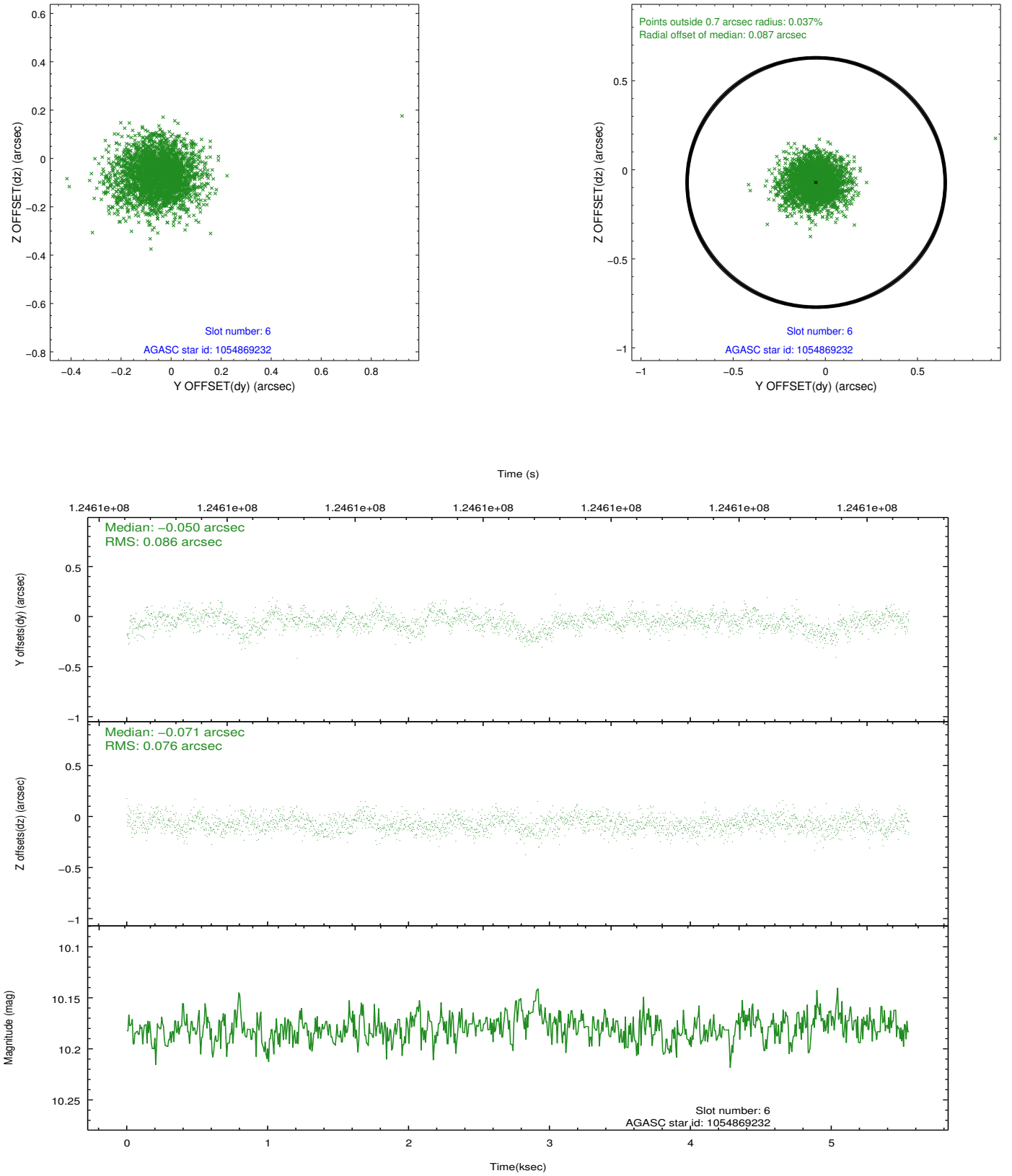
2.4.1 Slot 3



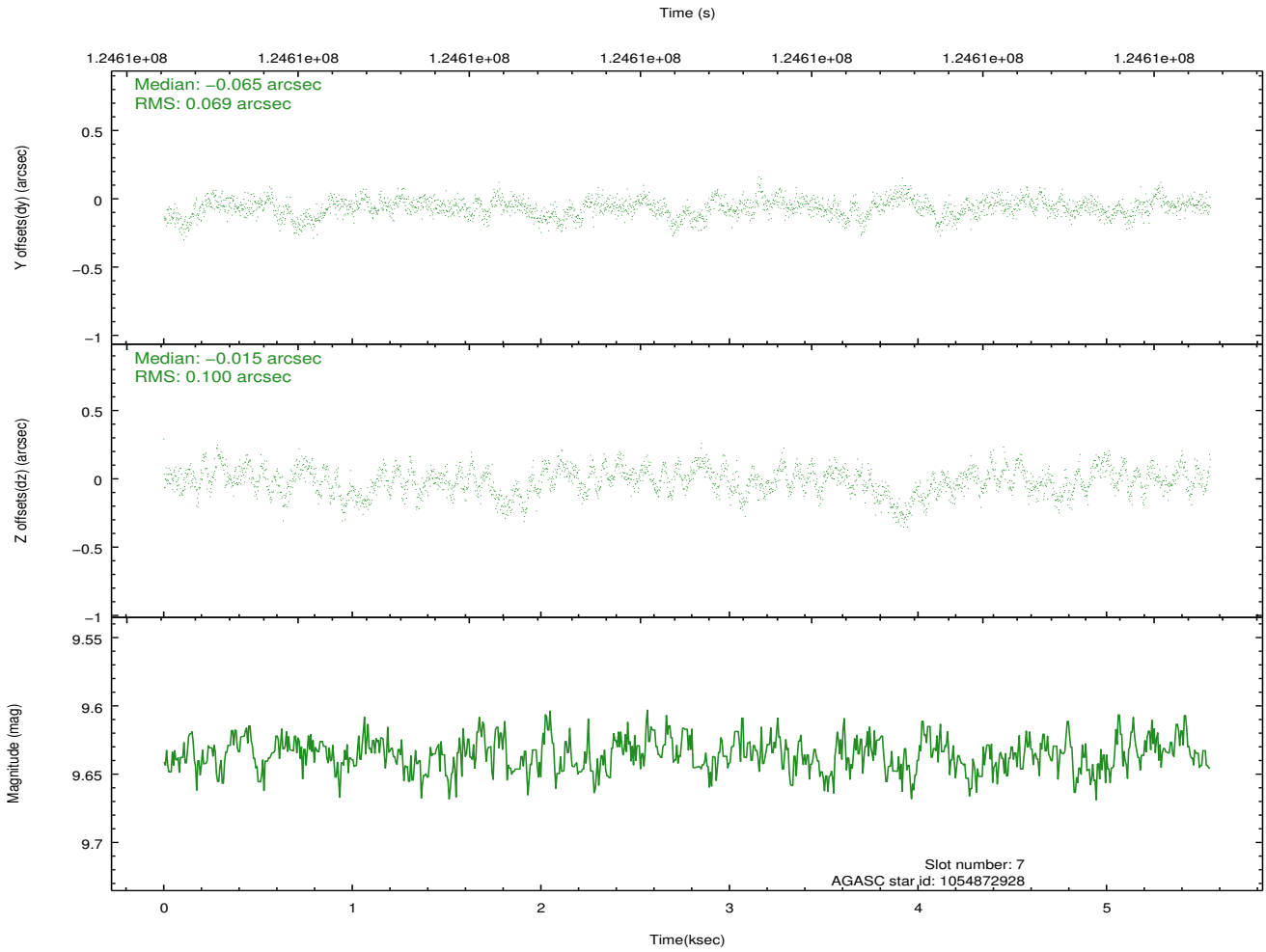
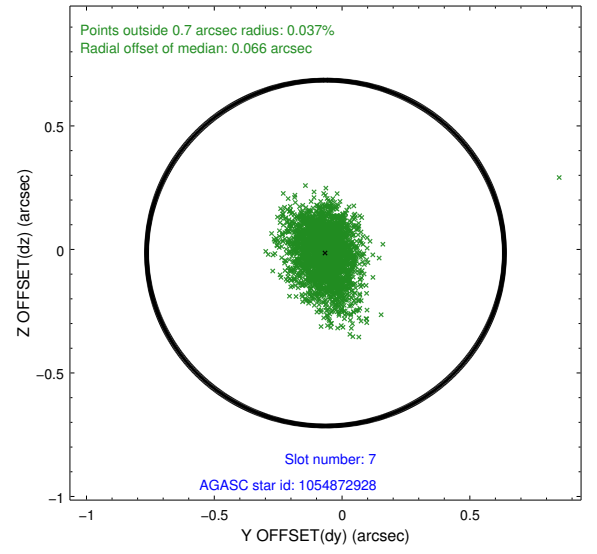
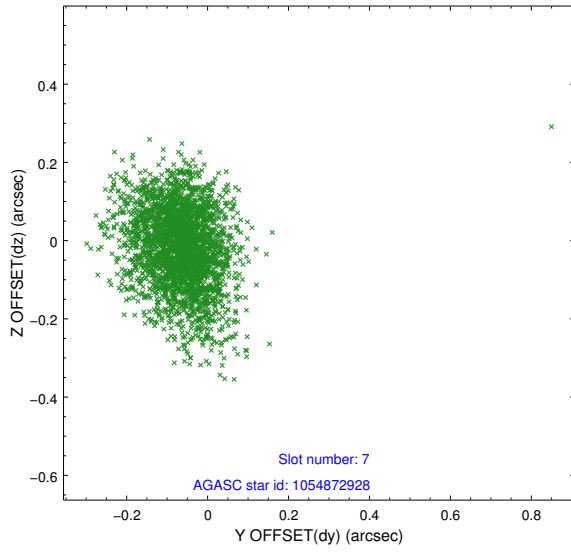
2.4.2 Slot 5



2.4.3 Slot 6

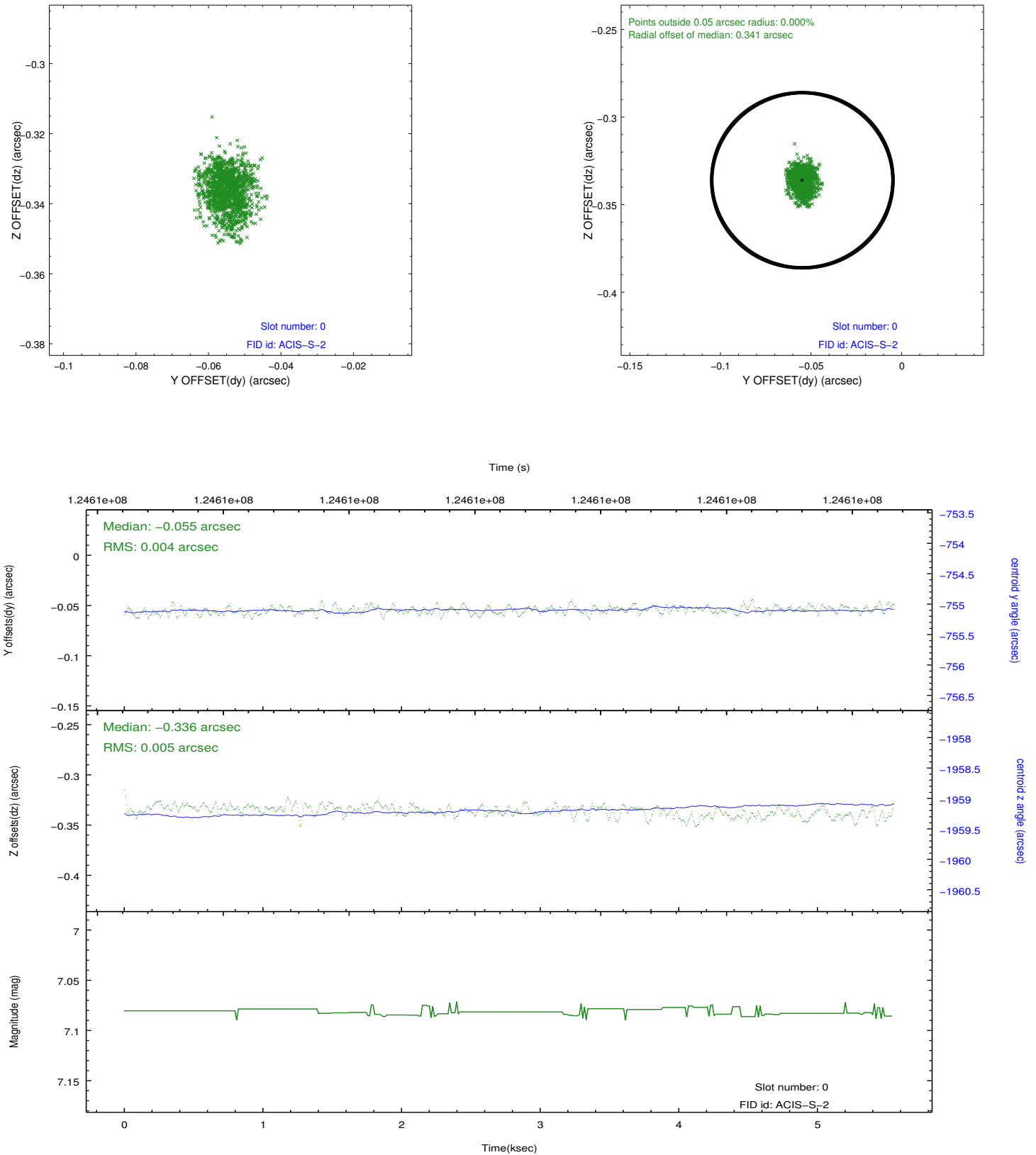


2.4.4 Slot 7

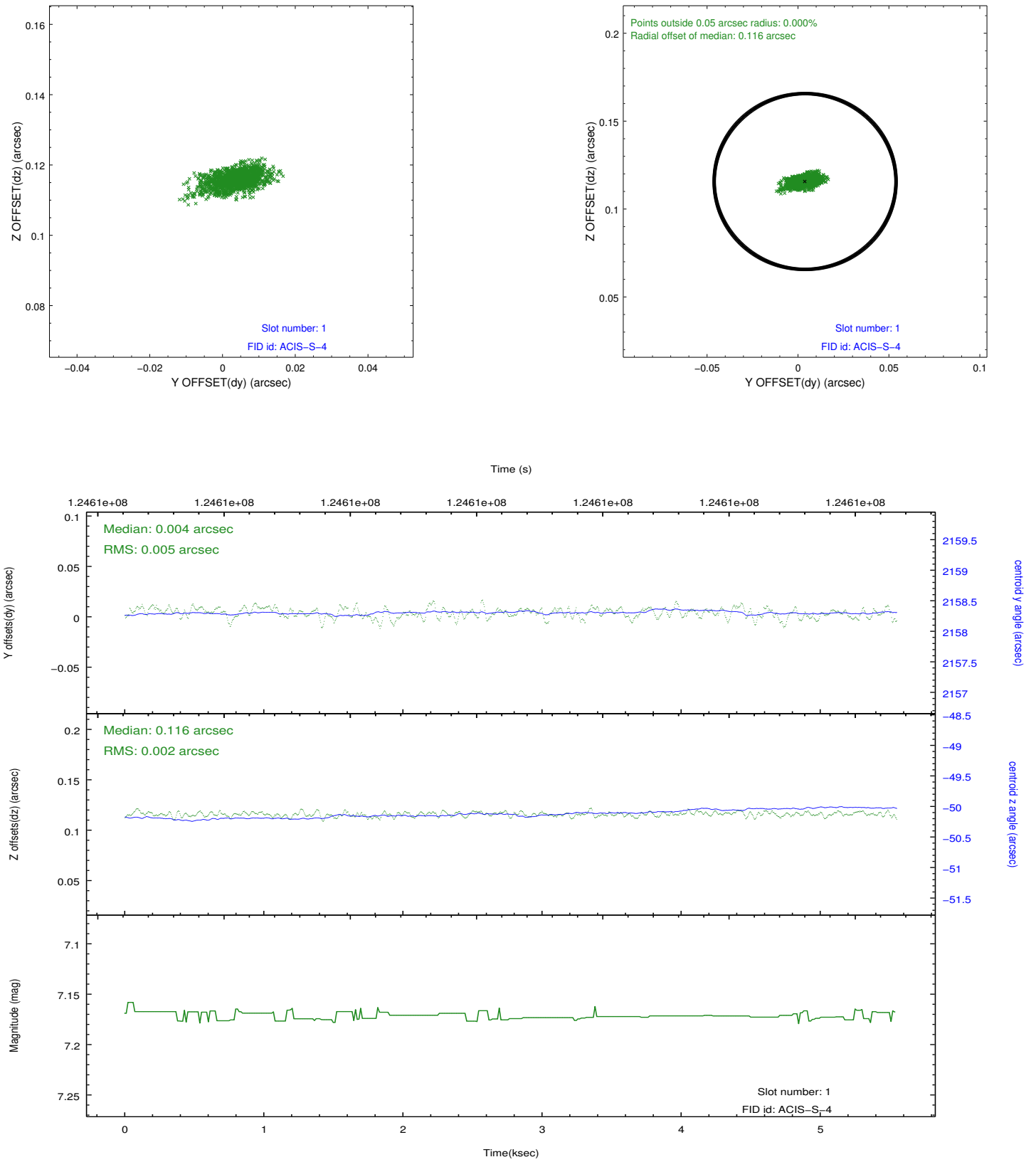


2.5 FID Slots

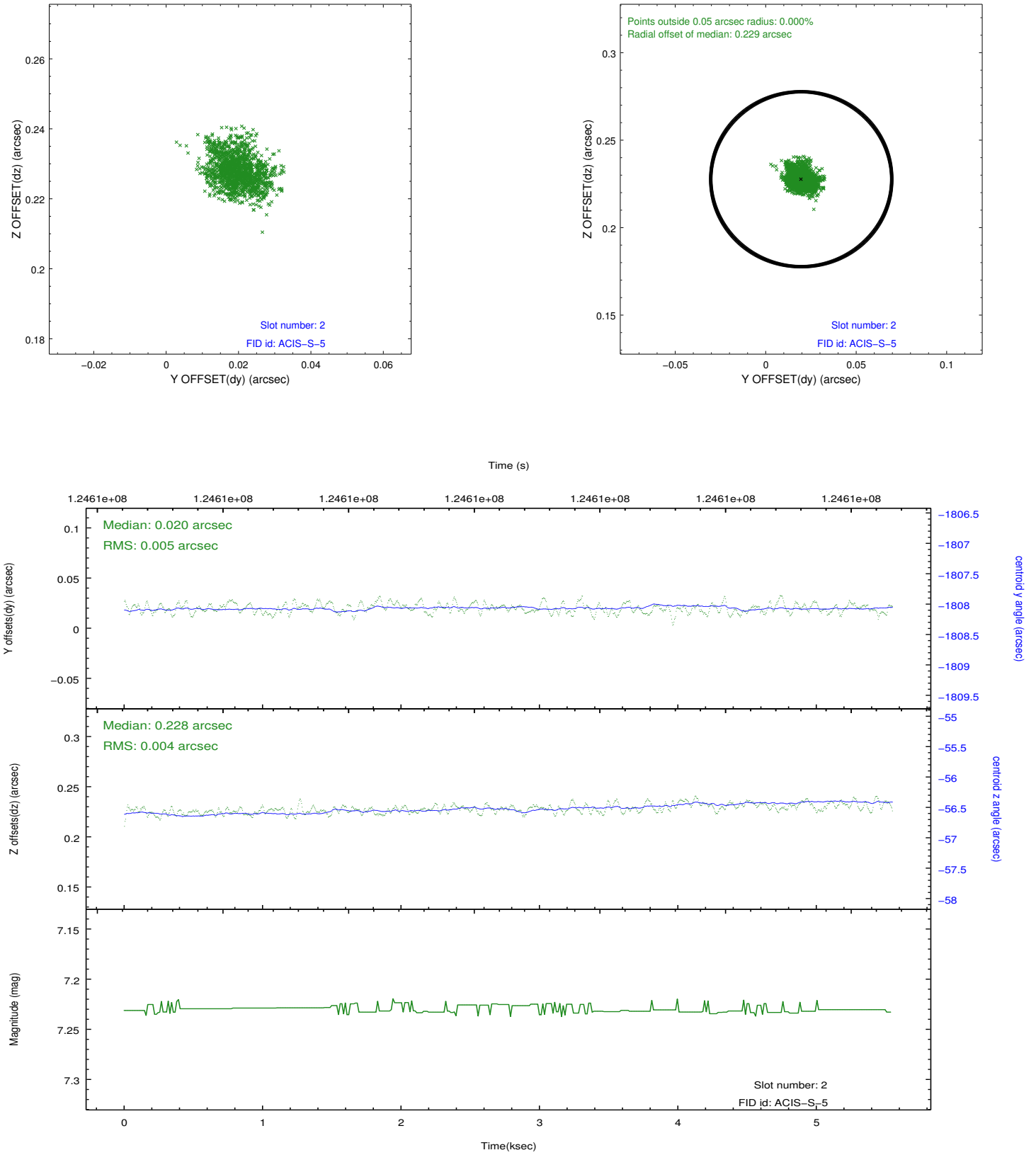
2.5.1 Slot 0



2.5.2 Slot 1



2.5.3 Slot 2



A Summary

A.1 Status

V&V Scientist	Joy Nichols
V&V Date (YYYY-MM-DD)	2012.10.15
V&V Edition	1
V&V Disposition and Status	OK
V&V Charge Time	5.528

A.2 Comments

Charge time for this ObsId remains at previous value of 5.528 ks, although with this processing the charge time would be 5.549 ks.

===

The guide star in slot 4 was removed from the aspect solution due to poor data quality. The aspect solution is improved by the removal of this guide star from the solution.