

V&V Reference Report

L2 ASCDS Version : 7.6.9

Observation 3107 - L2 Version 001
Chandra X-Ray Center

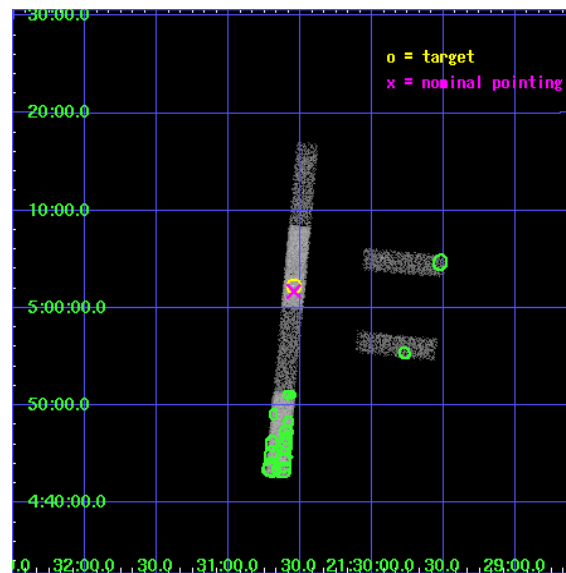
L2 Processing Date : Oct 7 2006

Contents

1	Front	2
2	OBI	3
2.1	OBI	3
2.1.1	Images	3
2.1.2	Bias	3
2.1.3	Parameters	4
2.1.4	Events	4
2.2	Compared Parameters	5
2.3	Aspect	6
2.4	Star Slots	9
2.4.1	Slot 3	9
2.4.2	Slot 4	10
2.4.3	Slot 5	11
2.4.4	Slot 6	12
2.4.5	Slot 7	13
2.5	FID Slots	14
2.5.1	Slot 0	14
2.5.2	Slot 1	15
2.5.3	Slot 2	16
3	Point Sources	17
A	Summary	18
A.1	Status	18
A.2	Comments	18

1 Front

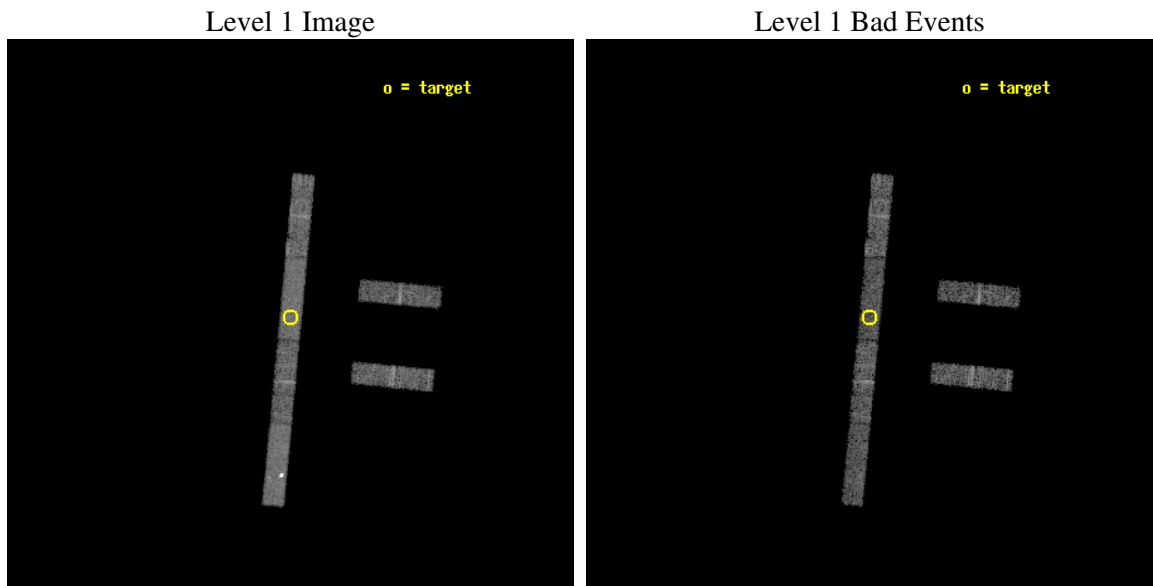
seq_num	700546
obs_id	3107
title	X-RAY IMAGING OF GPS AND CSS QUASARS
observer	Dr Aneta Siemiginowska
object	Q2127+040
dtcycle	0
cycle	P
ra_targ	322.637083
dec_targ	5.038056
ra_nom	322.63631533302
dec_nom	5.0283992288205
roll_nom	275.41655215901
revision	2
ontime	5924.5999678969
livetime	5711.508768042
ontime2	5924.5999678969
ontime3	5924.5999678969
ontime5	5924.5999678969
ontime6	5924.5999678969
ontime7	5924.5999678969
ontime8	5924.5999678969
l2events	22780



2 OBI

2.1 OBI

2.1.1 Images



2.1.2 Bias

Chip 2

Chip 3

Chip 5



Chip 6

Chip 7

Chip 8



2.1.3 Parameters

obi_num	1
ascdsver	7.6.9
caldbver	3.2.3
date	2006-10-07T05:38:08
revision	2

sched_exp_time	5373.123000
ontime	5926.4917958081
ontime2	5926.4917958081
ontime3	5926.4917958081
ontime5	5926.4917958081
ontime6	5926.4917958081
ontime7	5926.4917958081
ontime8	5926.4917958081
l1events	93542

2.1.4 Events

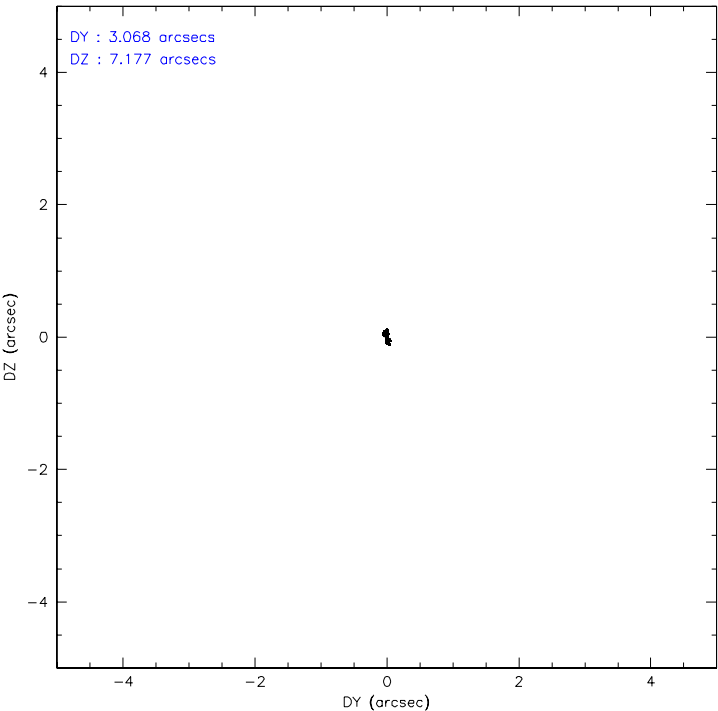
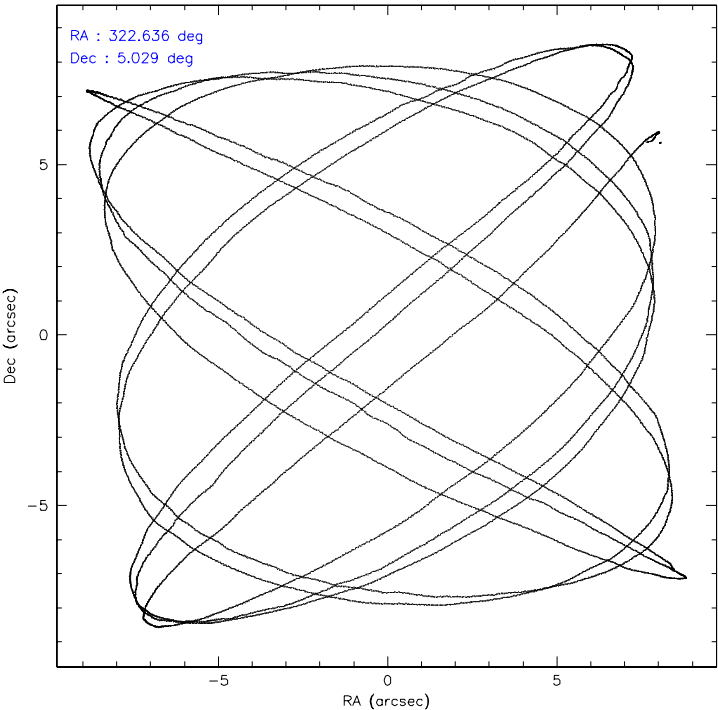
	ccd 2	ccd 3	ccd 5	ccd 6	ccd 7	ccd 8
level 1 events	13564	11370	22642	13224	16979	15763
rejected events	11877	9791	8781	11394	8717	12687
rejected %	87%	86%	38%	86%	51%	80%

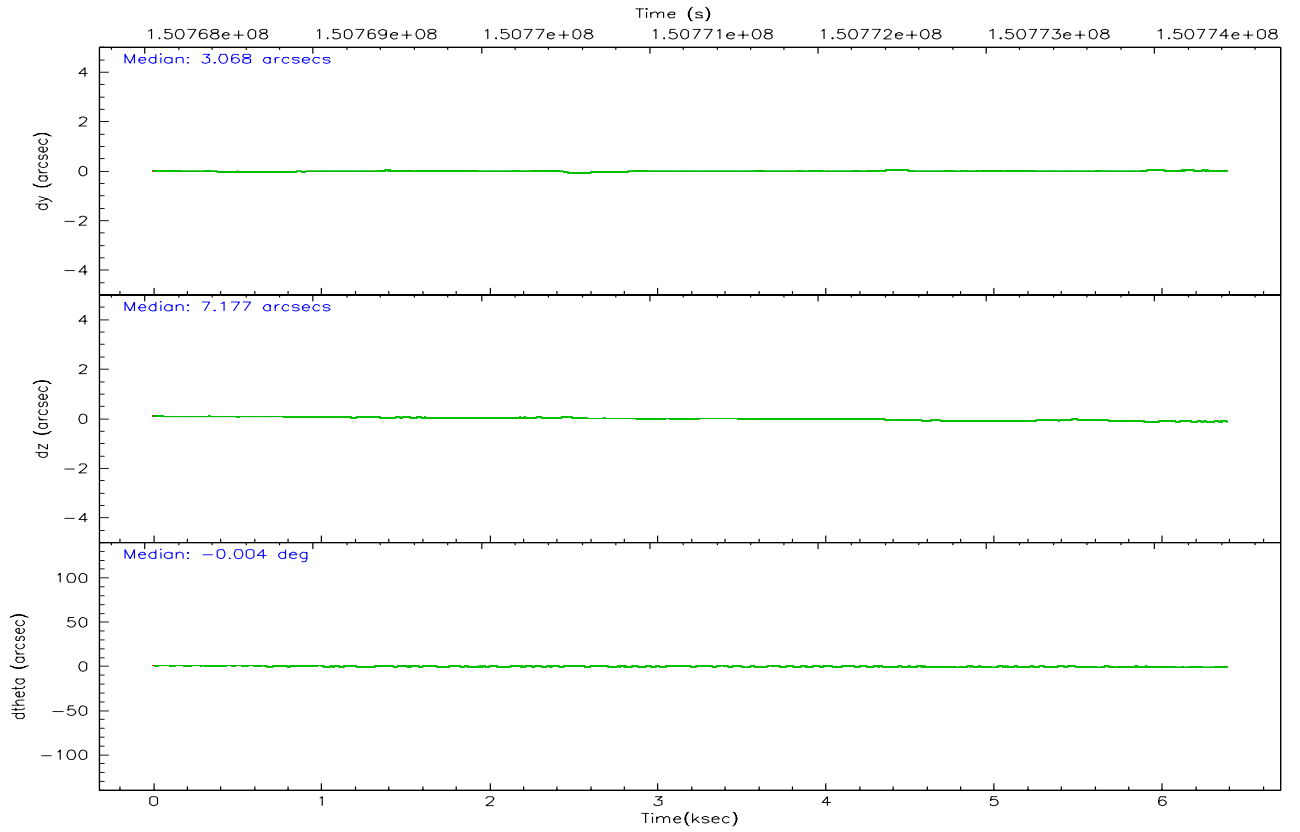
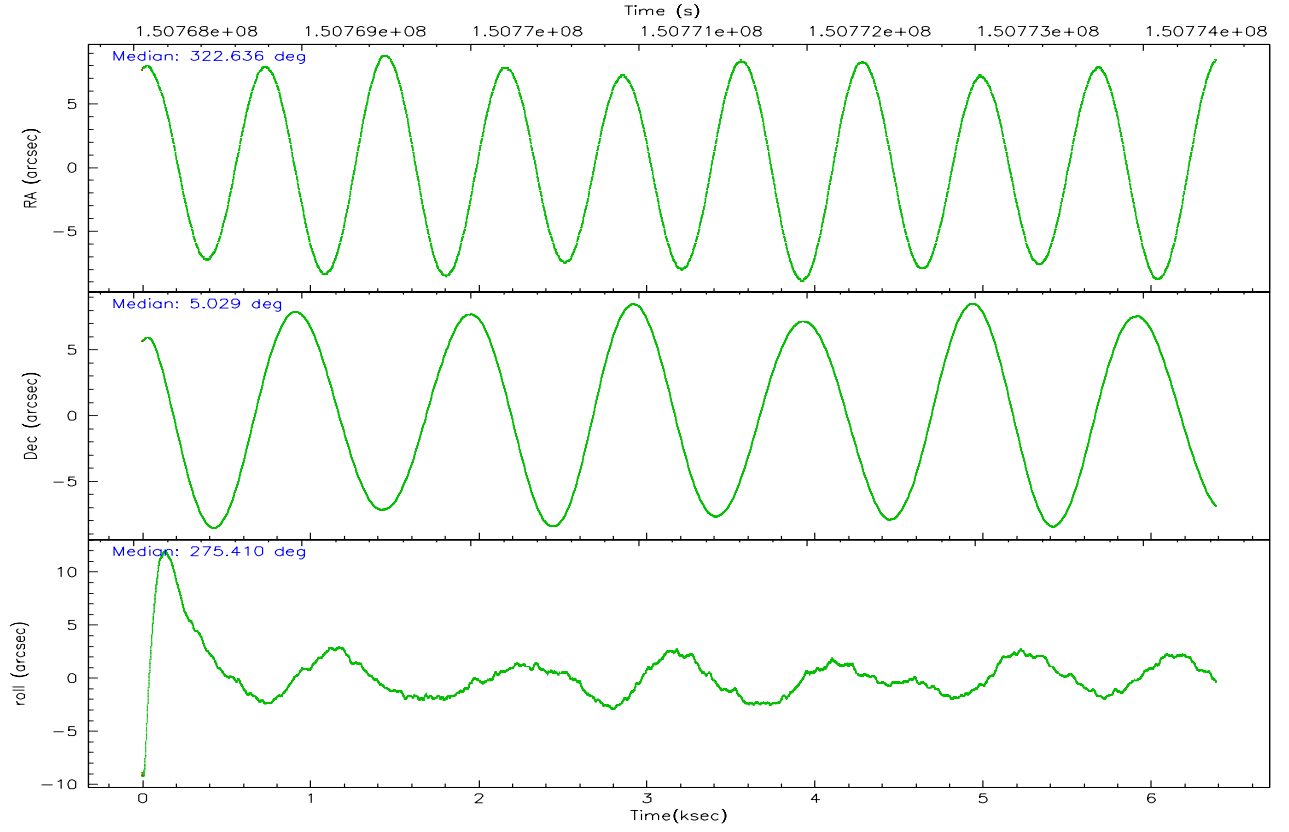
	ccd 2	ccd 3	ccd 5	ccd 6	ccd 7	ccd 8
grade 0 events	771	758	4855	891	765	1069
	5%	6%	21%	6%	4%	6%
grade 1 events	12	7	43	6	20	8
	0%	0%	0%	0%	0%	0%
grade 2 events	297	250	3571	263	1938	577
	2%	2%	15%	1%	11%	3%
grade 3 events	182	191	414	224	584	307
	1%	1%	1%	1%	3%	1%
grade 4 events	209	177	302	194	613	284
	1%	1%	1%	1%	3%	1%
grade 5 events	448	433	800	478	1060	603
	3%	3%	3%	3%	6%	3%
grade 6 events	229	204	4722	258	4363	853
	1%	1%	20%	1%	25%	5%
grade 7 events	11416	9350	7935	10910	7636	12062
	84%	82%	35%	82%	44%	76%

2.2 Compared Parameters

Parameter	Planned	Actual	Parameter	Planned	Actual
Instrument	ACIS	ACIS	Obspar format version number	6	6
Detector	ACIS-235678	ACIS-235678	Obspar file type	PREDICTED	ACTUAL
Grating	NONE	NONE	Obspar update status	NONE	UPDATED
Data mode	FAINT	FAINT	Number of optional ACIS chips dropped	0	0
Observation mode	POINTING	POINTING	On-chip summing requested	N	N
Pointing RA	322.620149	322.636315333022	Subarray requested	1/4	1/4
Pointing Dec	5.050389	5.028399228820479	Subarray start row	0	385
Pointing Roll	275.261371	275.4165521590105	Subarray row count	1024	256
SIM focus pos (mm)	-0.684267	-0.6828225247311905	Alternating exposures requested	N	N
SIM defocus (mm)	0	0.001444936568705701	Primary exposure time	0.000000	1.1
SIM translation stage pos (mm)	-190.132523	-190.1400660498719			
SIM translation stage offset (mm)	0	0.00754346686406393			
Observation start time	150769061.184000	150767686.01336			
Observation start date	2002-10-12T00:16:37	2002-10-11T23:54:46			
Observation end time	150774434.184000	150774749.28865			
Observation end date	2002-10-12T01:46:10	2002-10-12T01:52:29			
Read mode	TIMED	TIMED			

2.3 Aspect



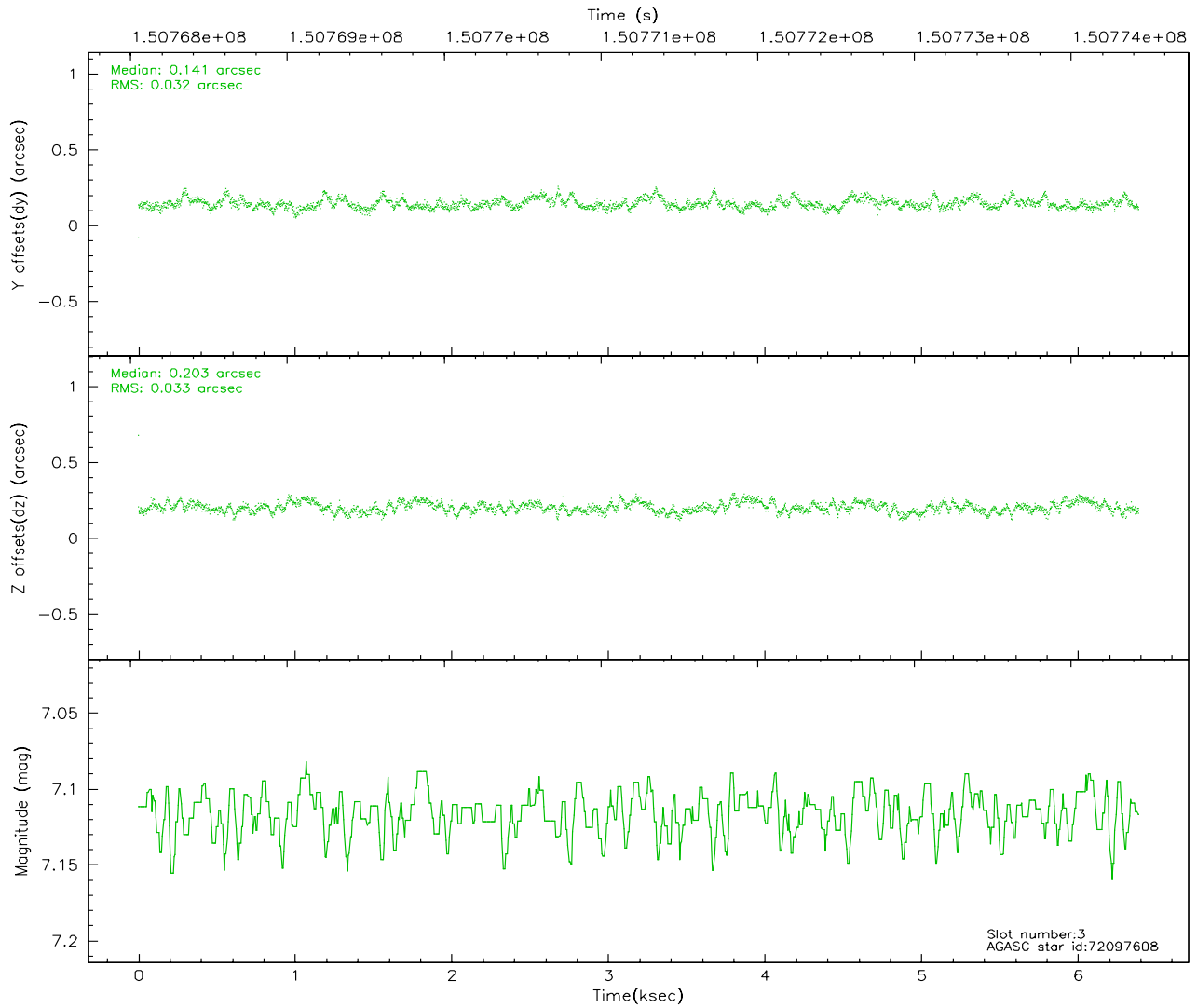
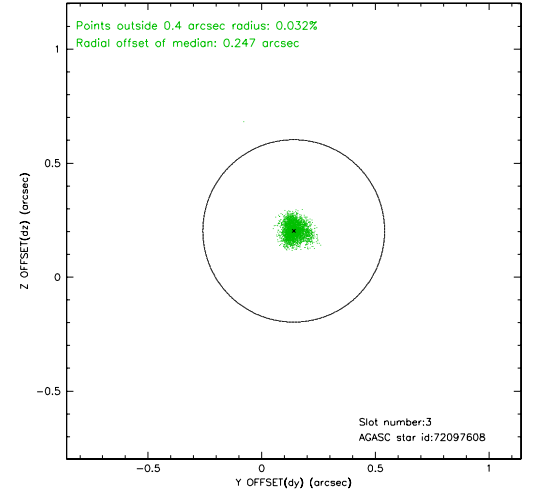
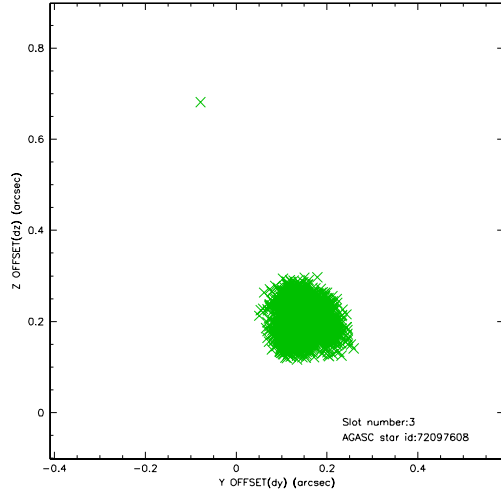


Slot Statistics

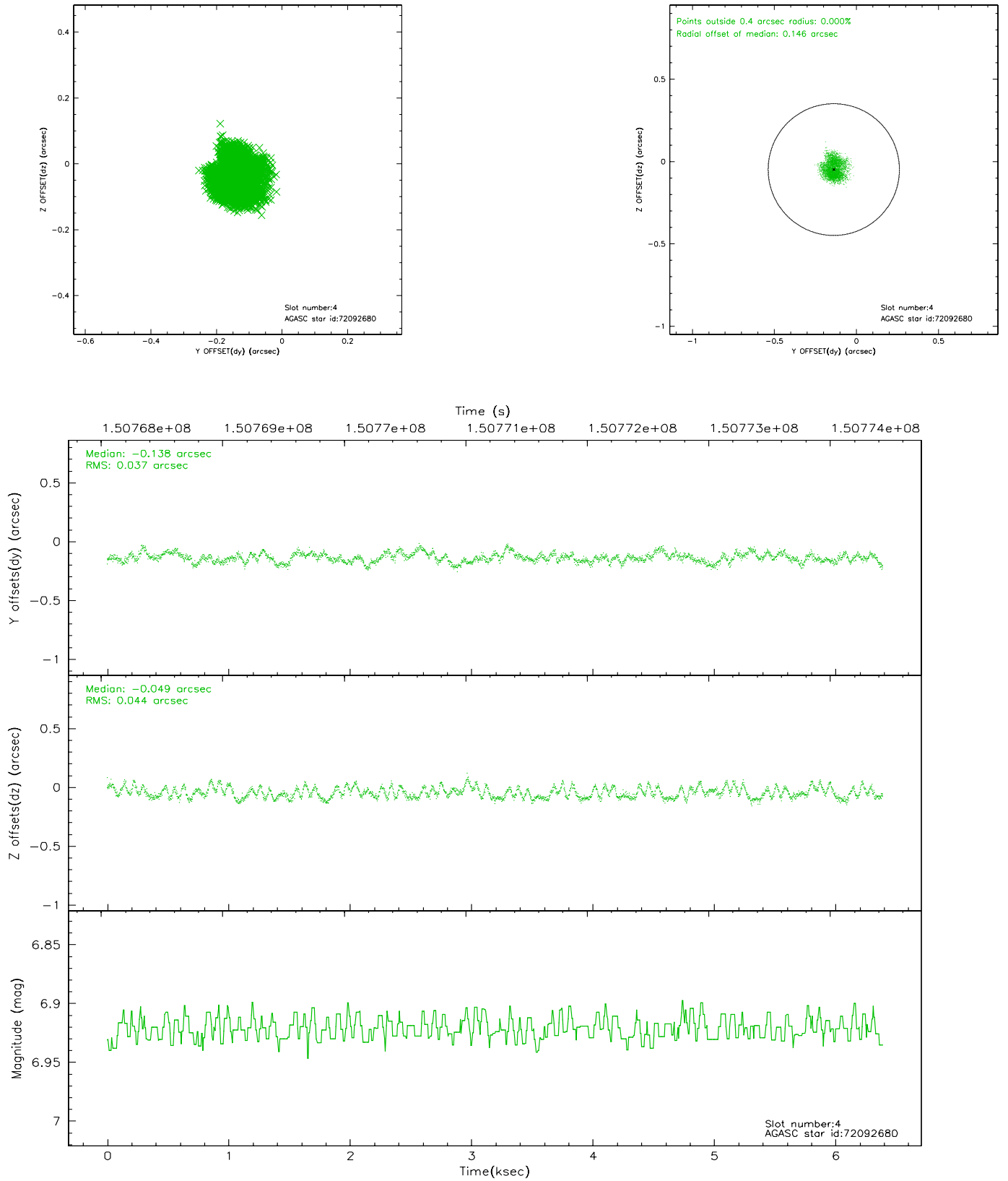
slot	status	id	mag	n_pts	med_dy	med_dz	dr1	dr2	ra	dec	mean_y	mean_z
0	FID	ACIS-S-2	7.11	1559	-0.007	0.025	0.006	0.010	0.000000	0.000000	-755.71	-1728.32
1	FID	ACIS-S-4	7.20	1559	-0.041	-0.003	0.005	0.009	0.000000	0.000000	2157.11	179.19
2	FID	ACIS-S-5	7.24	1559	0.017	-0.013	0.006	0.010	0.000000	0.000000	-1807.35	173.89
3	GUIDE	72097608	7.11	3118	0.141	0.203	0.049	0.078	323.296203	4.563178	1968.86	2256.62
4	GUIDE	72092680	6.92	3118	-0.138	-0.049	0.063	0.096	322.788468	5.579192	-1839.00	776.61
5	GUIDE	70388496	8.84	3118	0.018	-0.156	0.068	0.113	322.220710	5.171318	-564.60	-1385.09
6	GUIDE	70387856	8.99	3116	-0.090	0.145	0.073	0.119	322.345857	5.531253	-1813.31	-819.49
7	GUIDE	70388568	9.57	3114	0.065	-0.148	0.111	0.179	322.014493	4.667209	1174.29	-2289.80

2.4 Star Slots

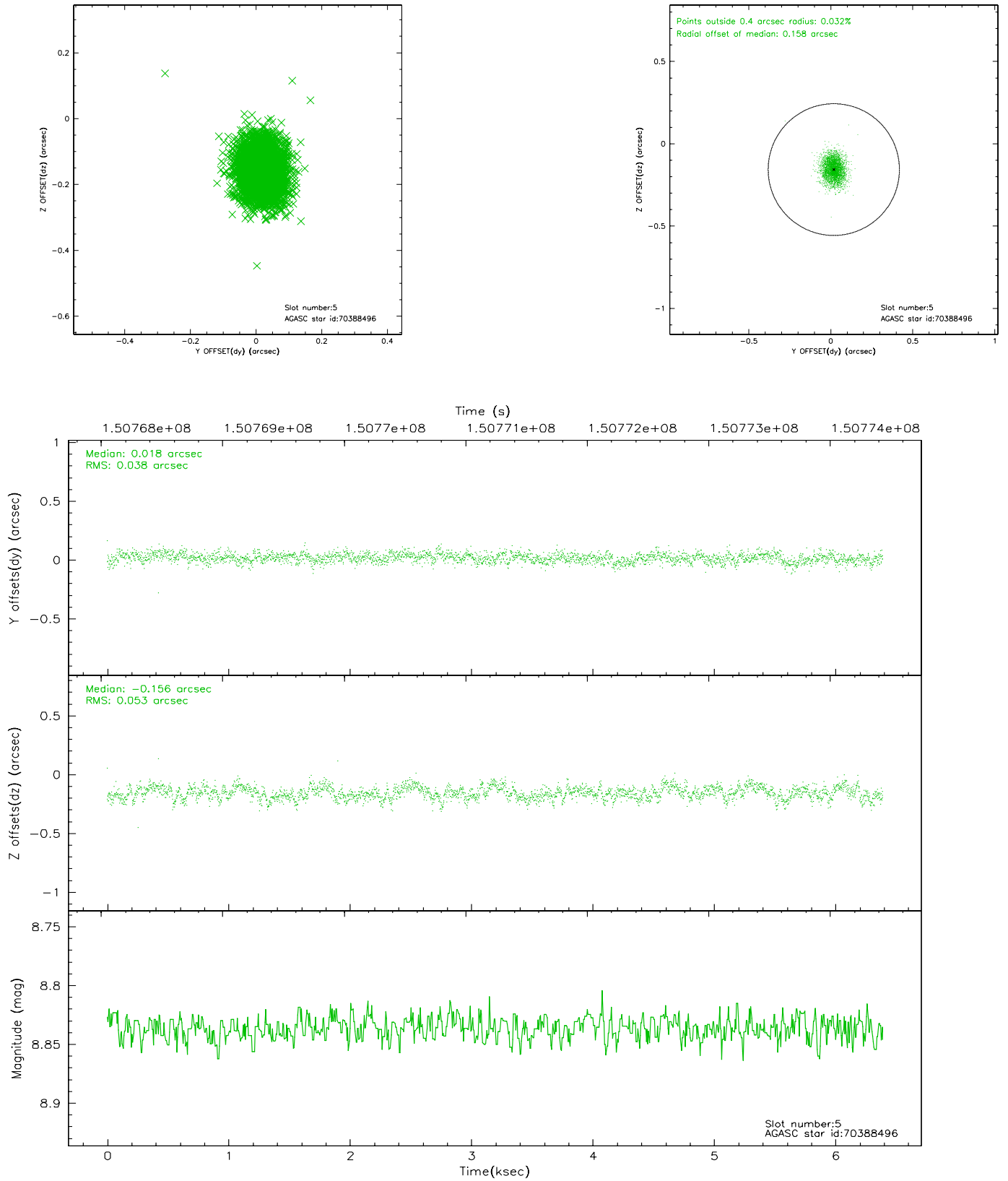
2.4.1 Slot 3



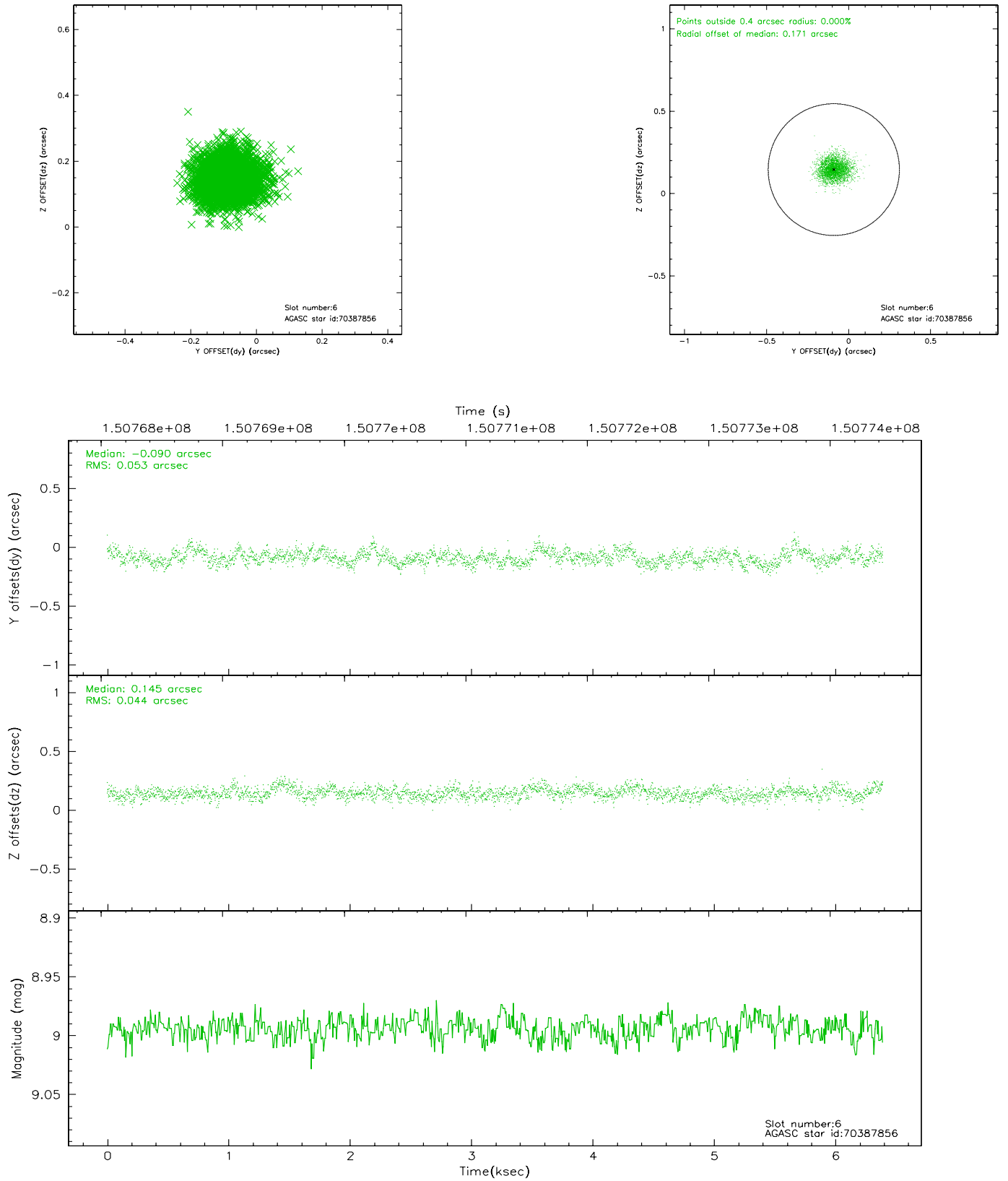
2.4.2 Slot 4



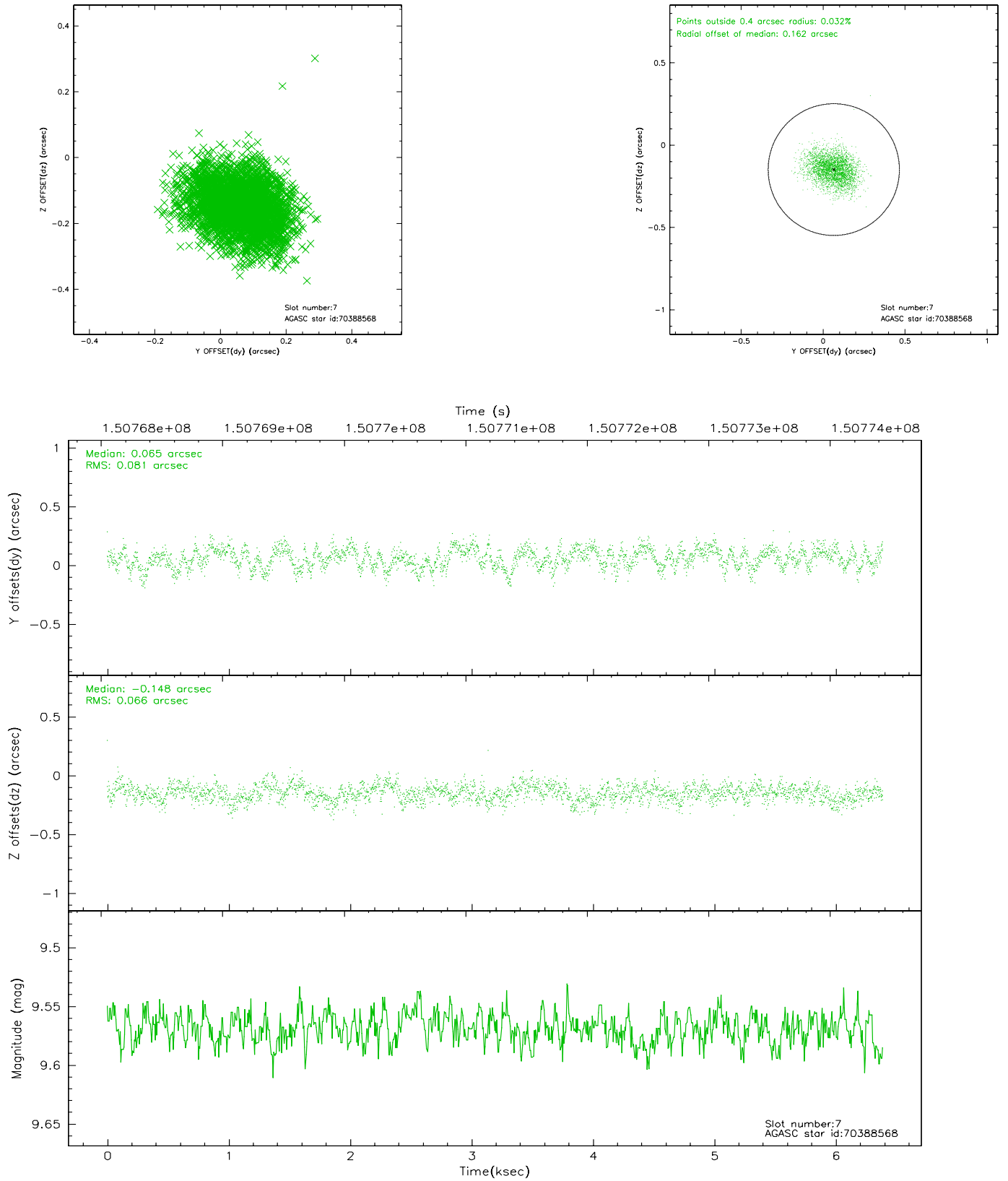
2.4.3 Slot 5



2.4.4 Slot 6

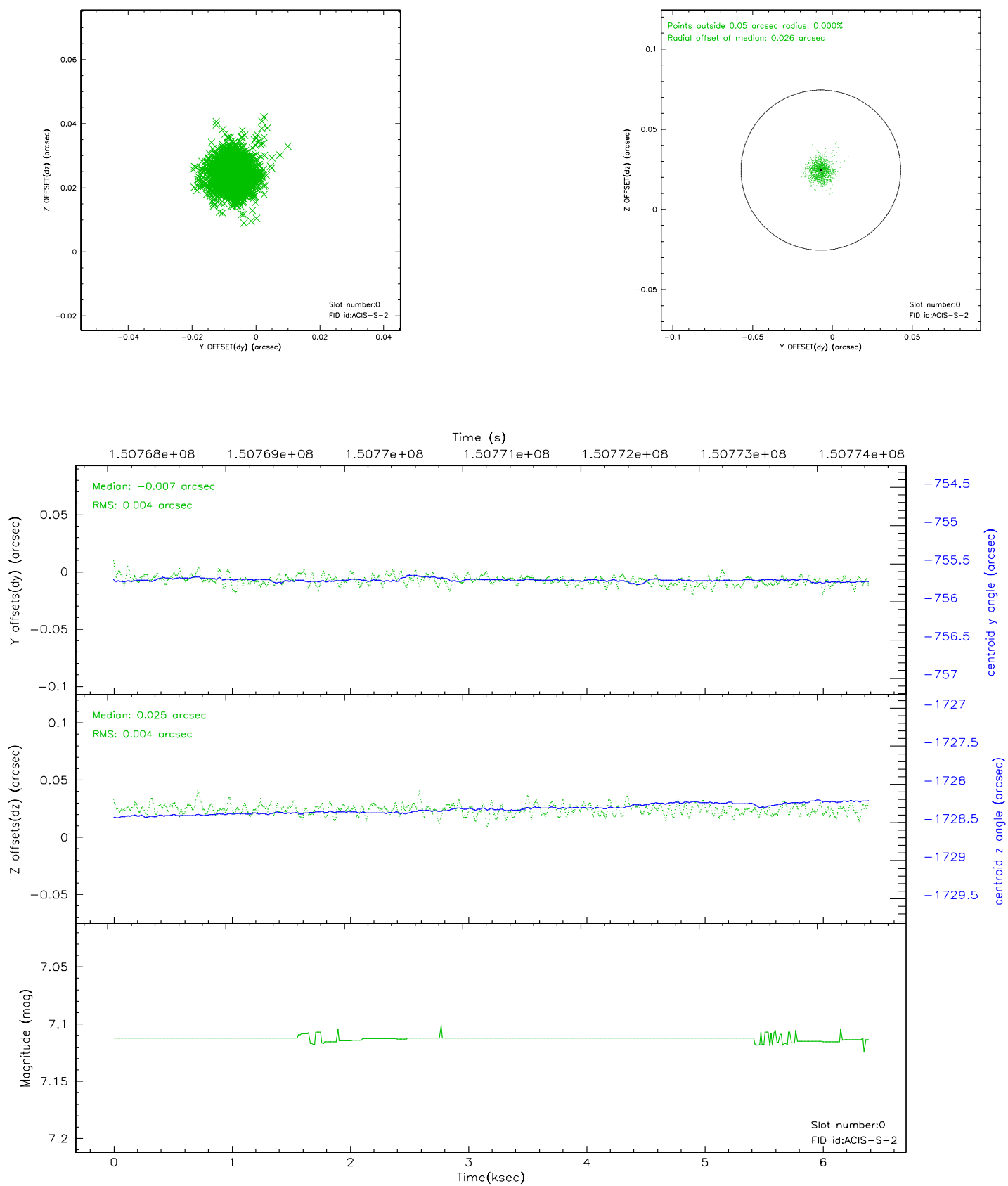


2.4.5 Slot 7

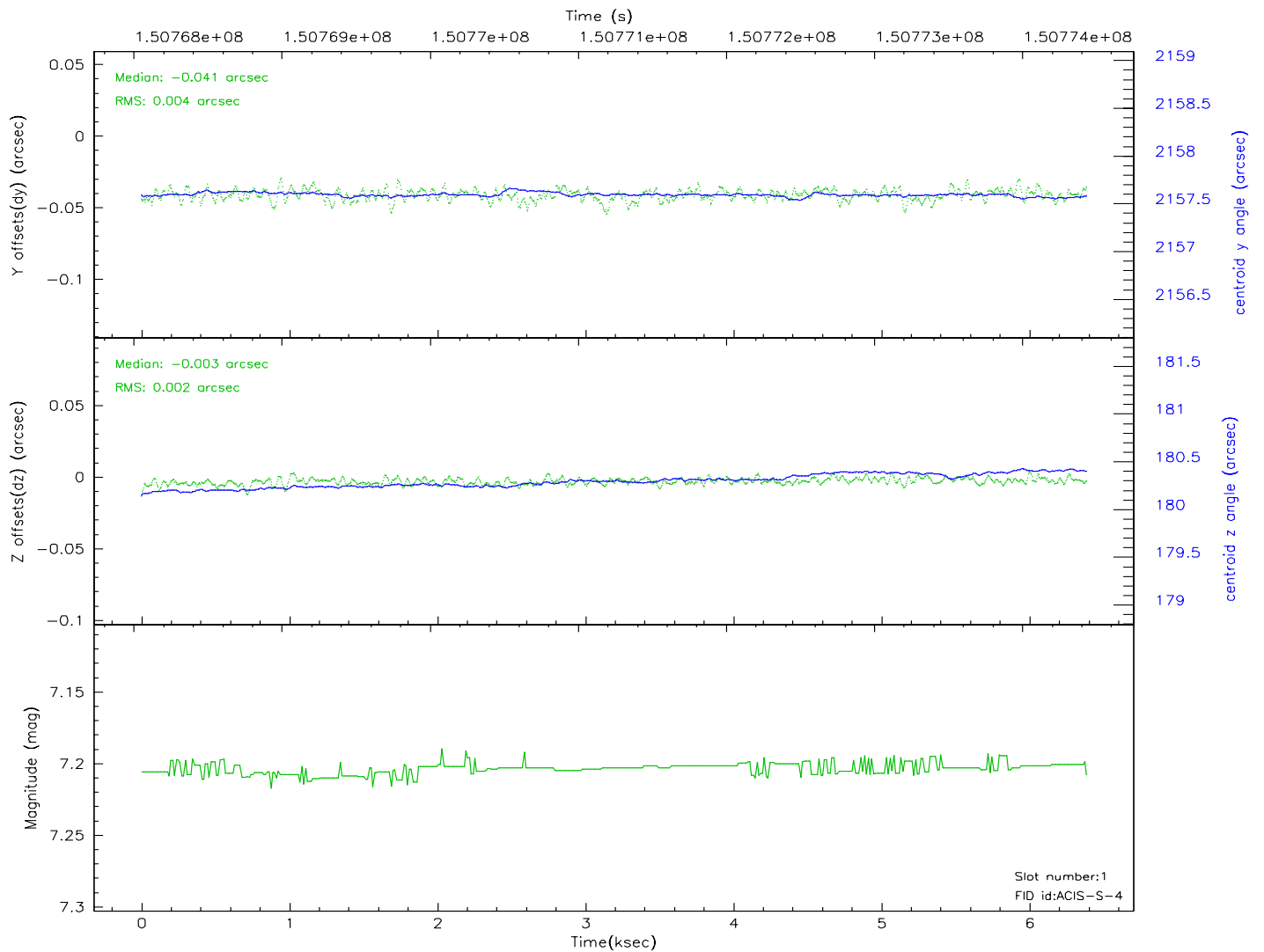
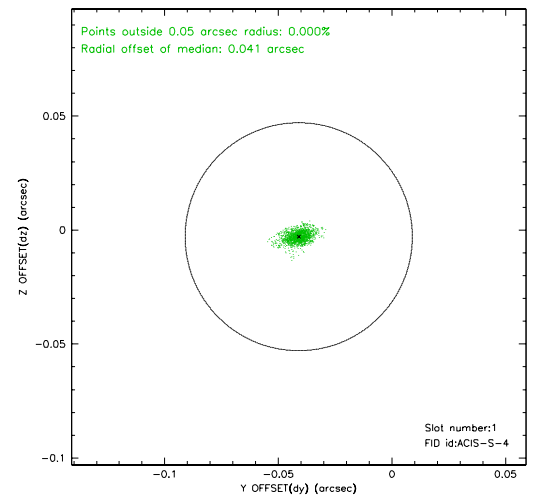
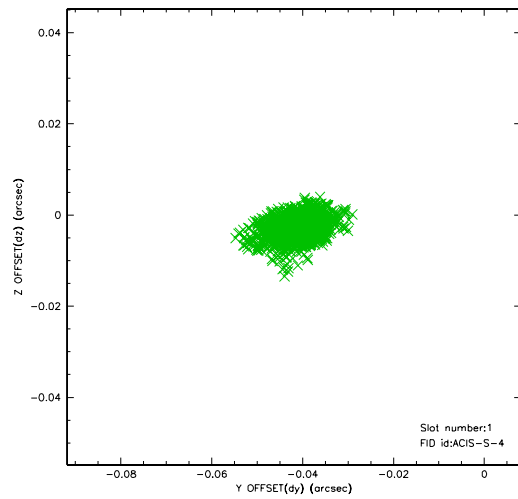


2.5 FID Slots

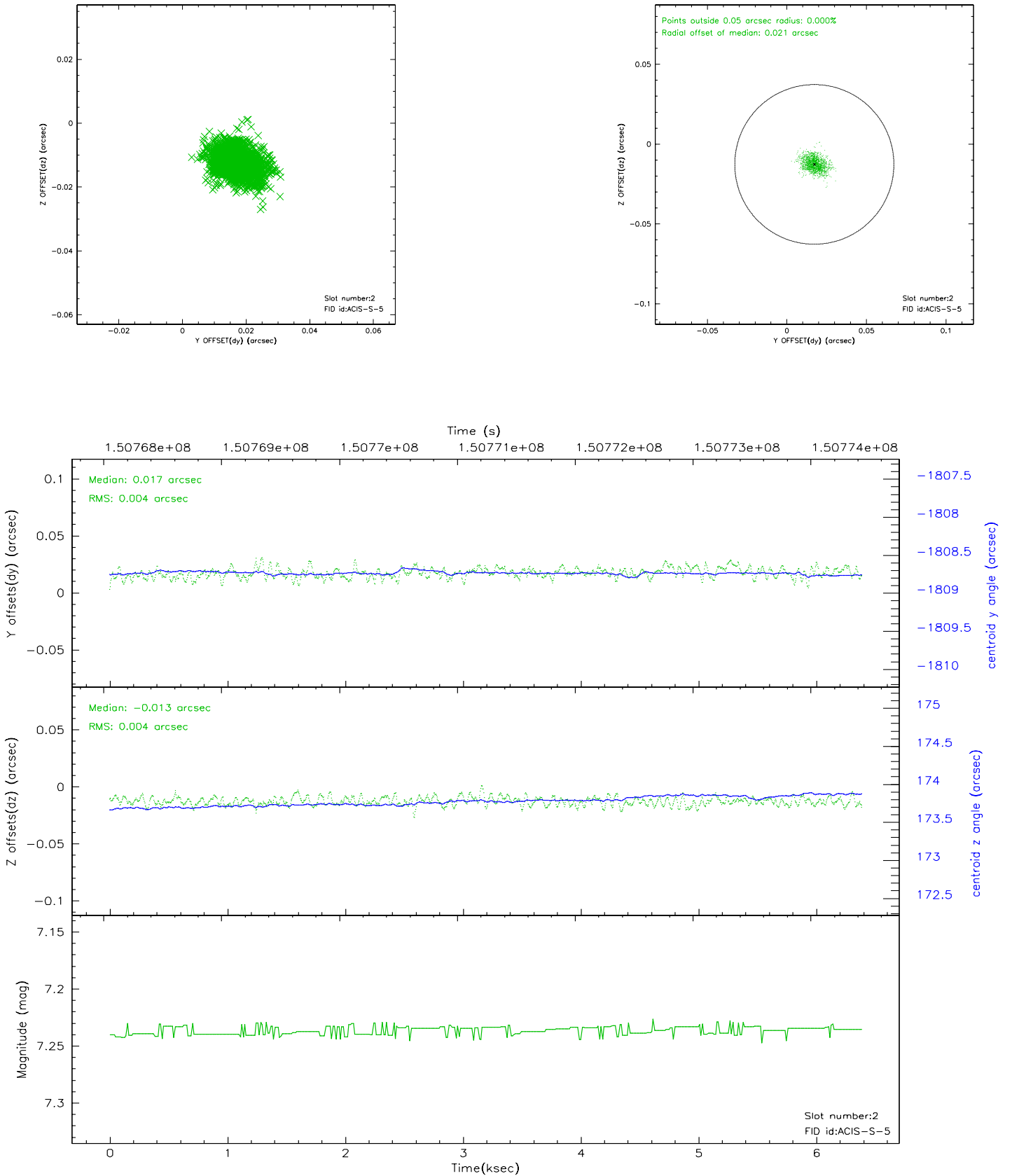
2.5.1 Slot 0



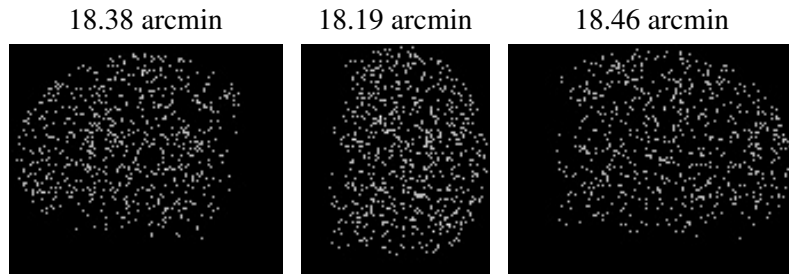
2.5.2 Slot 1



2.5.3 Slot 2



3 Point Sources



A Summary

A.1 Status

V&V Scientist	Jen Lauer
V&V Date (YYYY-MM-DD)	2006.10.08
V&V Edition	1
V&V Disposition and Status	OK
V&V Charge Time	5.925

A.2 Comments