

# V&V Reference Report

## L2 ASCDS Version : 7.6.8.1

Observation 3104 - L2 Version 001  
Chandra X-Ray Center

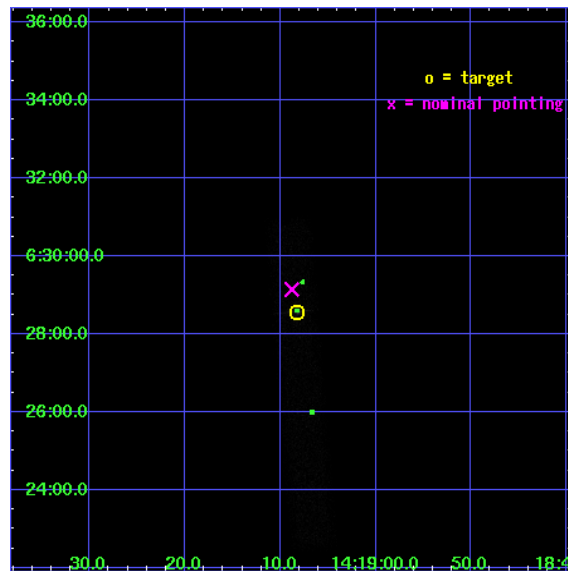
L2 Processing Date : Sep 6 2006

## Contents

<b>1</b>	<b>Front</b>	<b>2</b>
<b>2</b>	<b>OBI</b>	<b>3</b>
2.1	OBI . . . . .	3
2.1.1	Images . . . . .	3
2.1.2	Bias . . . . .	3
2.1.3	Parameters . . . . .	4
2.1.4	Events . . . . .	4
2.2	Compared Parameters . . . . .	5
2.3	Aspect . . . . .	6
2.4	Star Slots . . . . .	9
2.4.1	Slot 3 . . . . .	9
2.4.2	Slot 4 . . . . .	10
2.4.3	Slot 5 . . . . .	11
2.4.4	Slot 6 . . . . .	12
2.4.5	Slot 7 . . . . .	13
2.5	FID Slots . . . . .	14
2.5.1	Slot 0 . . . . .	14
2.5.2	Slot 1 . . . . .	15
2.5.3	Slot 2 . . . . .	16
<b>3</b>	<b>Point Sources</b>	<b>17</b>
<b>A</b>	<b>Summary</b>	<b>18</b>
A.1	Status . . . . .	18
A.2	Comments . . . . .	18

# 1 Front

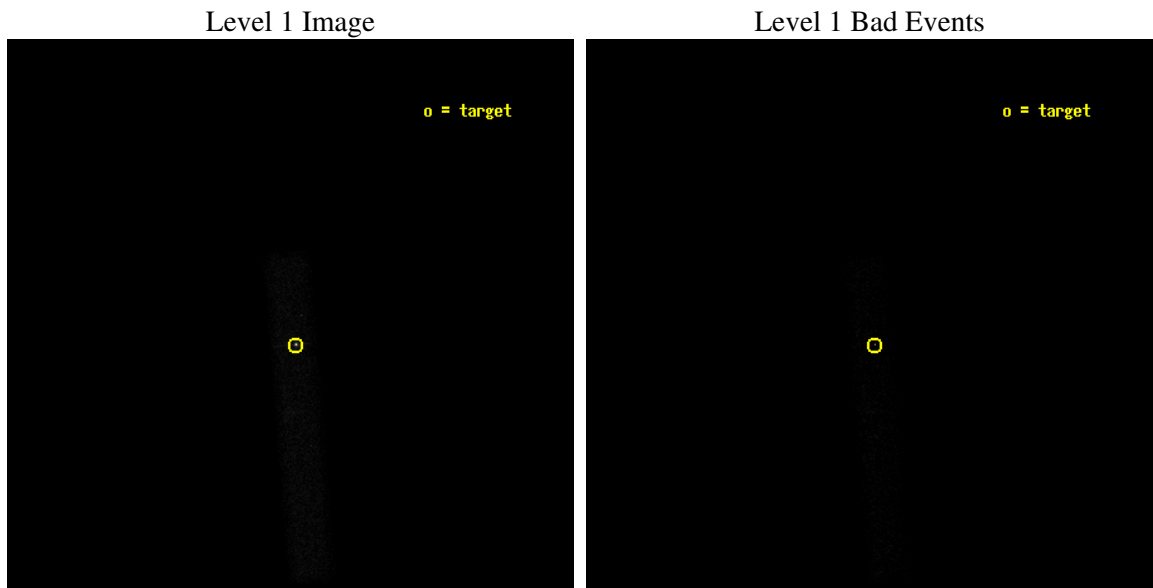
seq_num	700543
obs_id	3104
title	X-RAY IMAGING OF GPS AND CSS QUASARS
observer	Dr Aneta Siemiginowska
object	Q1416+067
dtcycle	0
cycle	P
ra_targ	214.784167
dec_targ	6.476333
ra_nom	214.78667201494
dec_nom	6.4857305904478
roll_nom	85.346618769668
revision	2
ontime	19709.559253708
livetime	17875.529887273
ontime7	19709.559253708
l2events	21804



## 2 OBI

### 2.1 OBI

#### 2.1.1 Images



#### 2.1.2 Bias

Chip 7



### 2.1.3 Parameters

obi_num	0
ascdsver	7.6.8.1
caldbver	3.2.3
date	2006-09-06T06:14:11
revision	2

sched_exp_time	19224.152000
ontime	20067.969731644
ontime7	20067.969731644
l1events	35626

### 2.1.4 Events

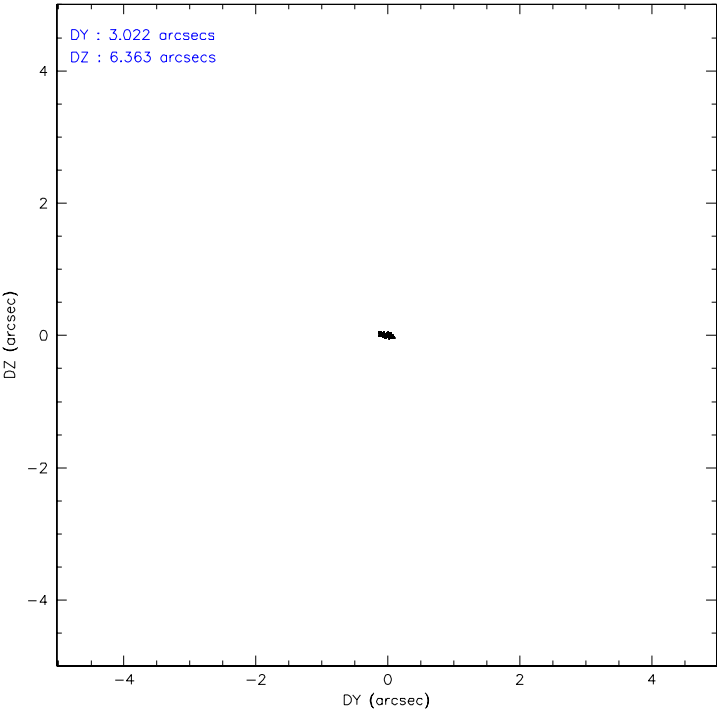
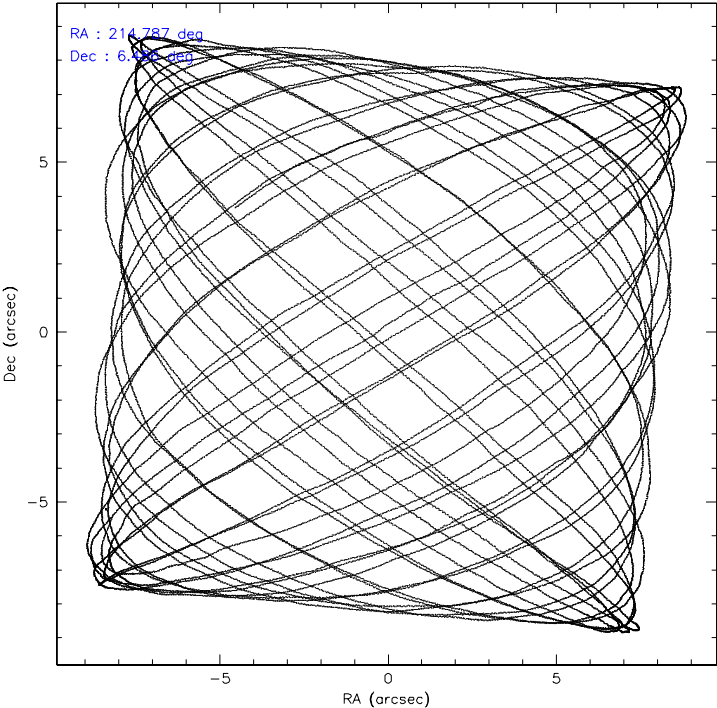
	<b>ccd 7</b>
level 1 events	35626
rejected events	13416
rejected %	37%

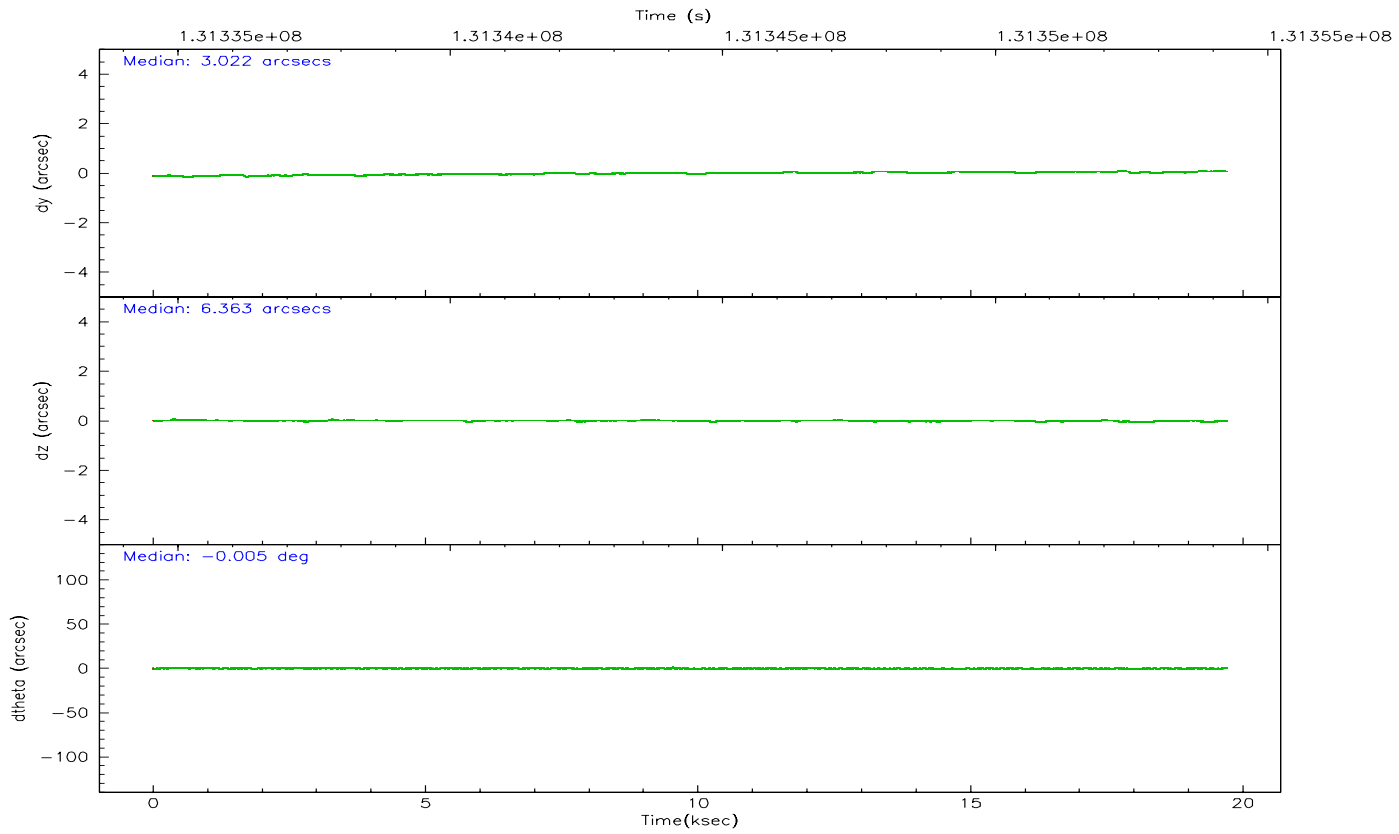
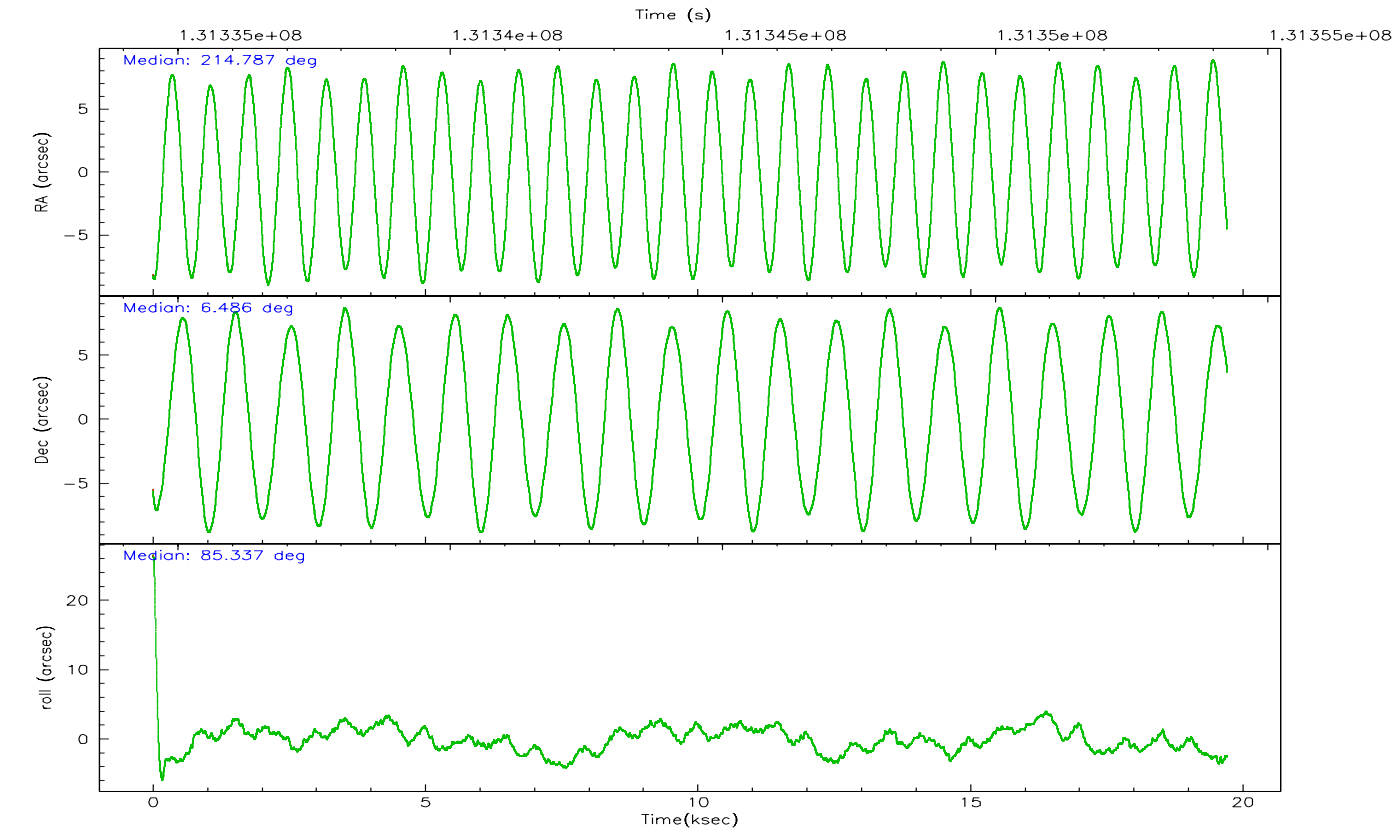
	<b>ccd 7</b>
grade 0 events	4753
	13%
grade 1 events	84
	0%
grade 2 events	5373
	15%
grade 3 events	2373
	6%
grade 4 events	2480
	6%
grade 5 events	1840
	5%
grade 6 events	7484
	21%
grade 7 events	11239
	31%

## 2.2 Compared Parameters

Parameter	Planned	Actual	Parameter	Planned	Actual
Instrument	ACIS	ACIS	Obspar format version number	6	6
Detector	ACIS-7	ACIS-7	Obspar file type	PREDICTED	ACTUAL
Grating	NONE	NONE	Obspar update status	NONE	UPDATED
Data mode	VFAINT	VFAINT	On-chip summing requested	N	N
Observation mode	POINTING	POINTING	Subarray requested	CUSTOM	1/8
Pointing RA	214.798716	214.786672014944	Subarray start row	449	449
Pointing Dec	6.461234	6.485730590447764	Subarray row count	128	128
Pointing Roll	85.188615	85.34661876966813	Alternating exposures requested	N	N
SIM focus pos (mm)	-0.684267	-0.6828225247311905	Primary exposure time	0.000000	0.4
SIM defocus (mm)	0	0.001444936568705701			
SIM translation stage pos (mm)	-190.132523	-190.1400660498719			
SIM translation stage offset (mm)	0	0.00754346686406393			
Observation start time	131335031.184000	131333920.45502			
Observation start date	2002-03-01T01:56:07	2002-03-01T01:38:40			
Observation end time	131354255.184000	131354570.10586			
Observation end date	2002-03-01T07:16:31	2002-03-01T07:22:50			
Read mode	TIMED	TIMED			

### 2.3 Aspect





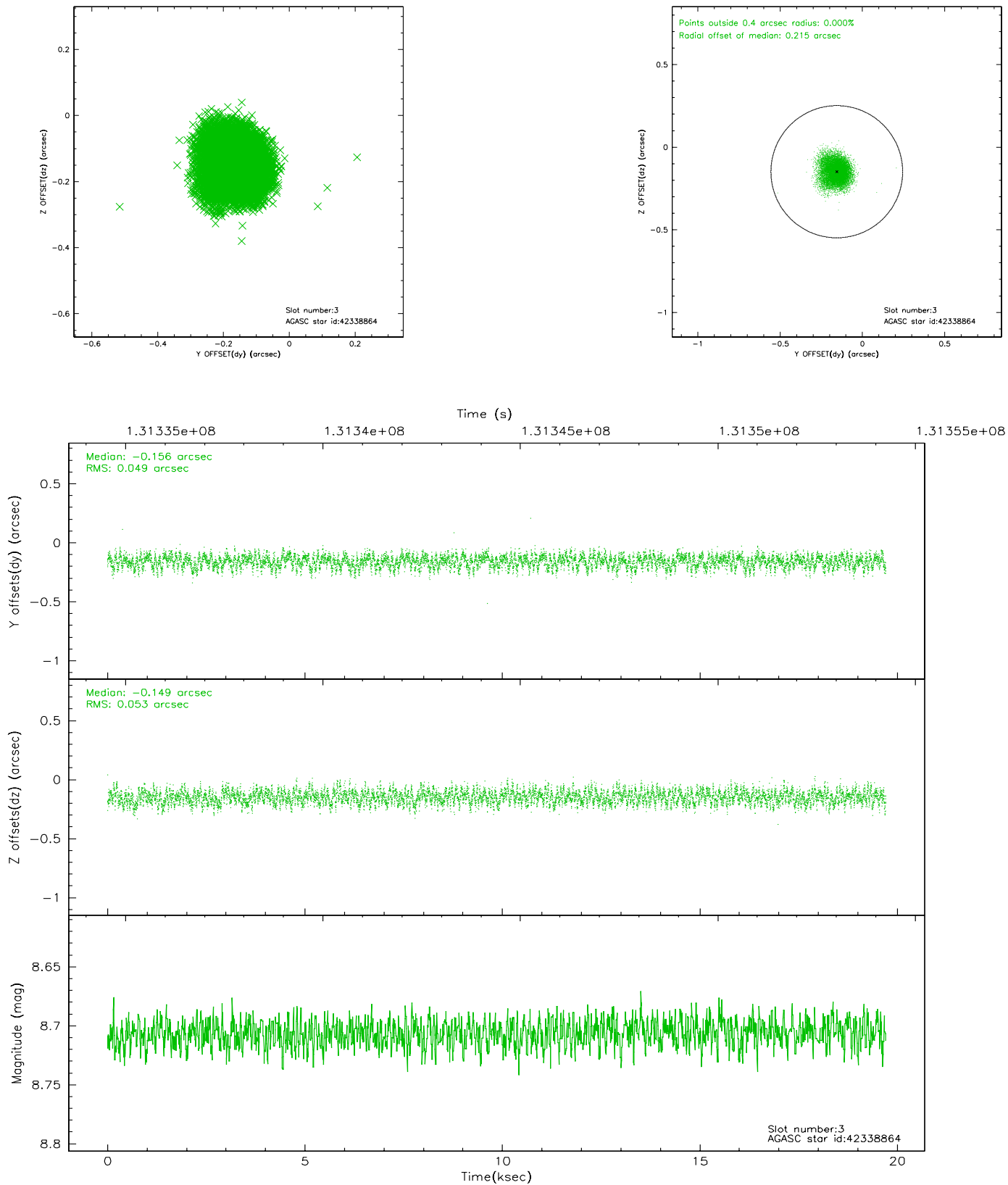
### Slot Statistics

slot	status	id	mag	n_pts	med_dy	med_dz	dr1	dr2	ra	dec	mean_y	mean_z
0	FID	ACIS-S-2	7.12	4808	-0.020	0.029	0.007	0.011	0.000000	0.000000	-755.64	-1727.50
1	FID	ACIS-S-4	7.21	4808	-0.058	0.002	0.006	0.011	0.000000	0.000000	2157.48	180.81
2	FID	ACIS-S-5	7.24	4808	0.047	-0.022	0.006	0.010	0.000000	0.000000	-1808.20	174.61
3	GUIDE	42338864	8.71	9614	-0.156	-0.149	0.077	0.124	214.291523	6.752765	893.76	1895.59
4	GUIDE	42342360	8.81	9615	0.085	-0.086	0.066	0.110	214.659937	6.232653	-861.98	426.45
5	GUIDE	42338216	9.36	9608	-0.054	-0.097	0.088	0.141	214.545343	6.840230	1283.05	1017.71
6	GUIDE	42338104	9.84	9614	0.224	0.106	0.101	0.167	214.872561	6.378797	-273.65	-287.40
7	GUIDE	42474848	7.61	9613	-0.099	0.227	0.052	0.084	215.355097	6.442439	100.24	-1988.02

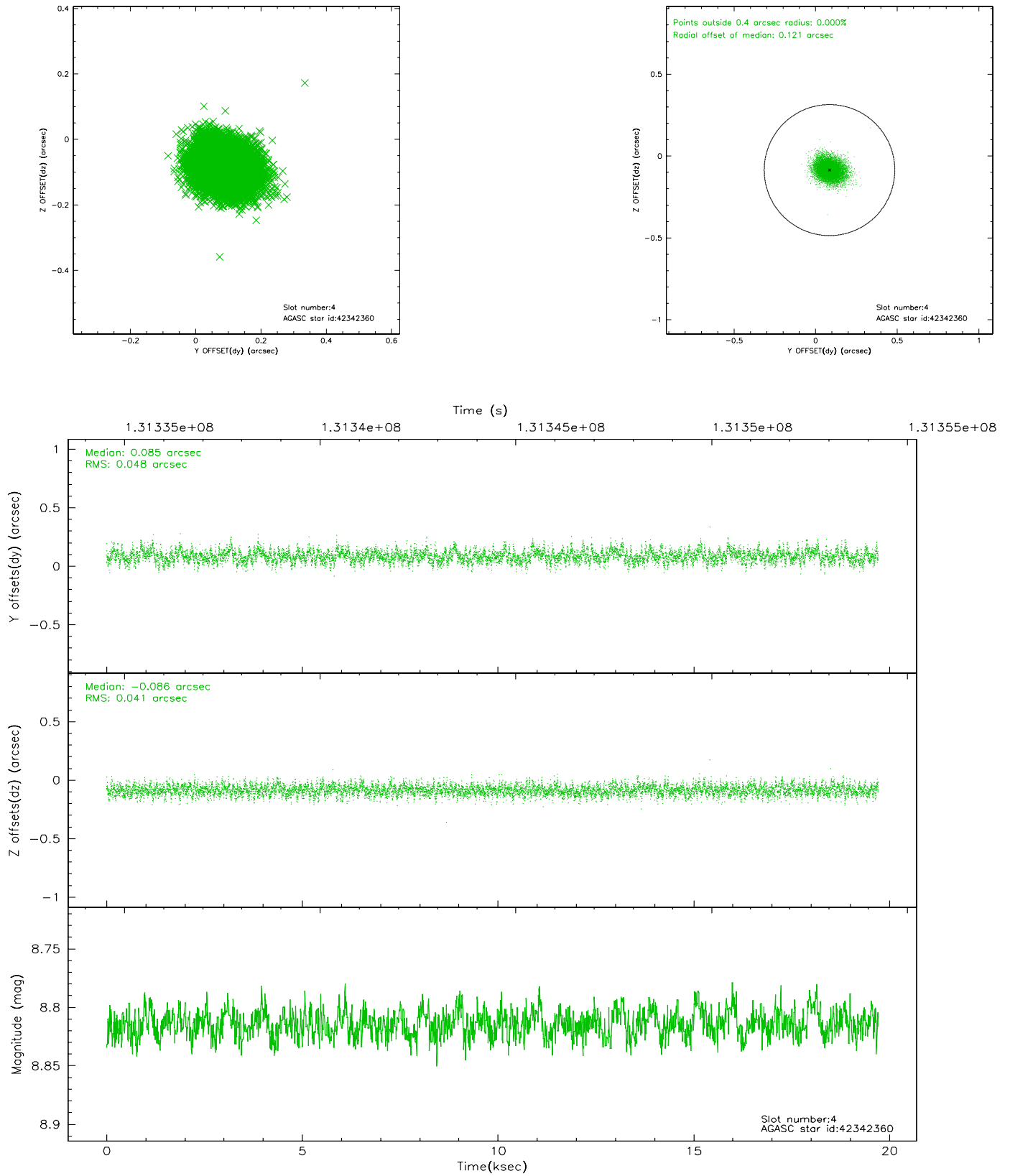


## 2.4 Star Slots

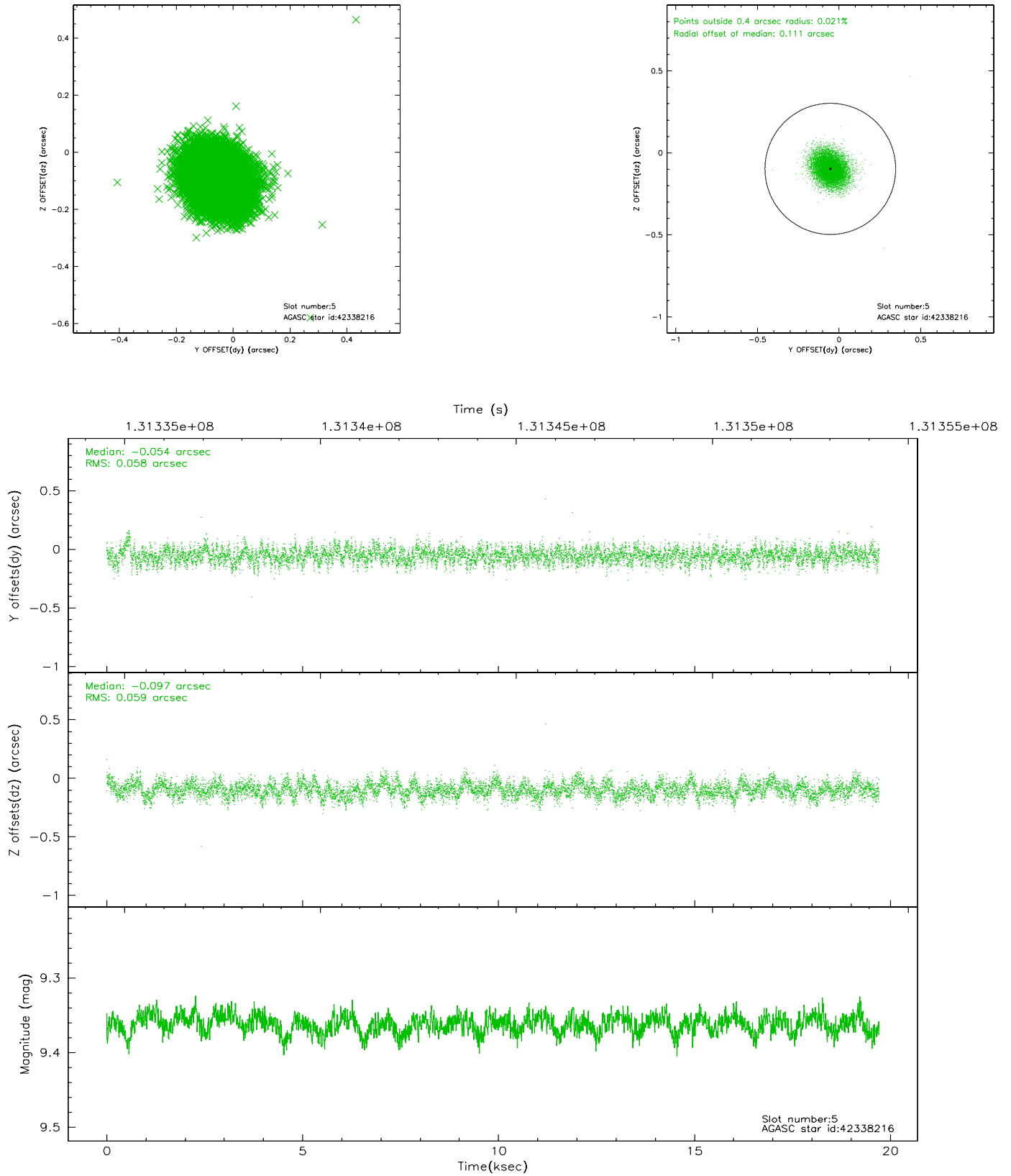
### 2.4.1 Slot 3



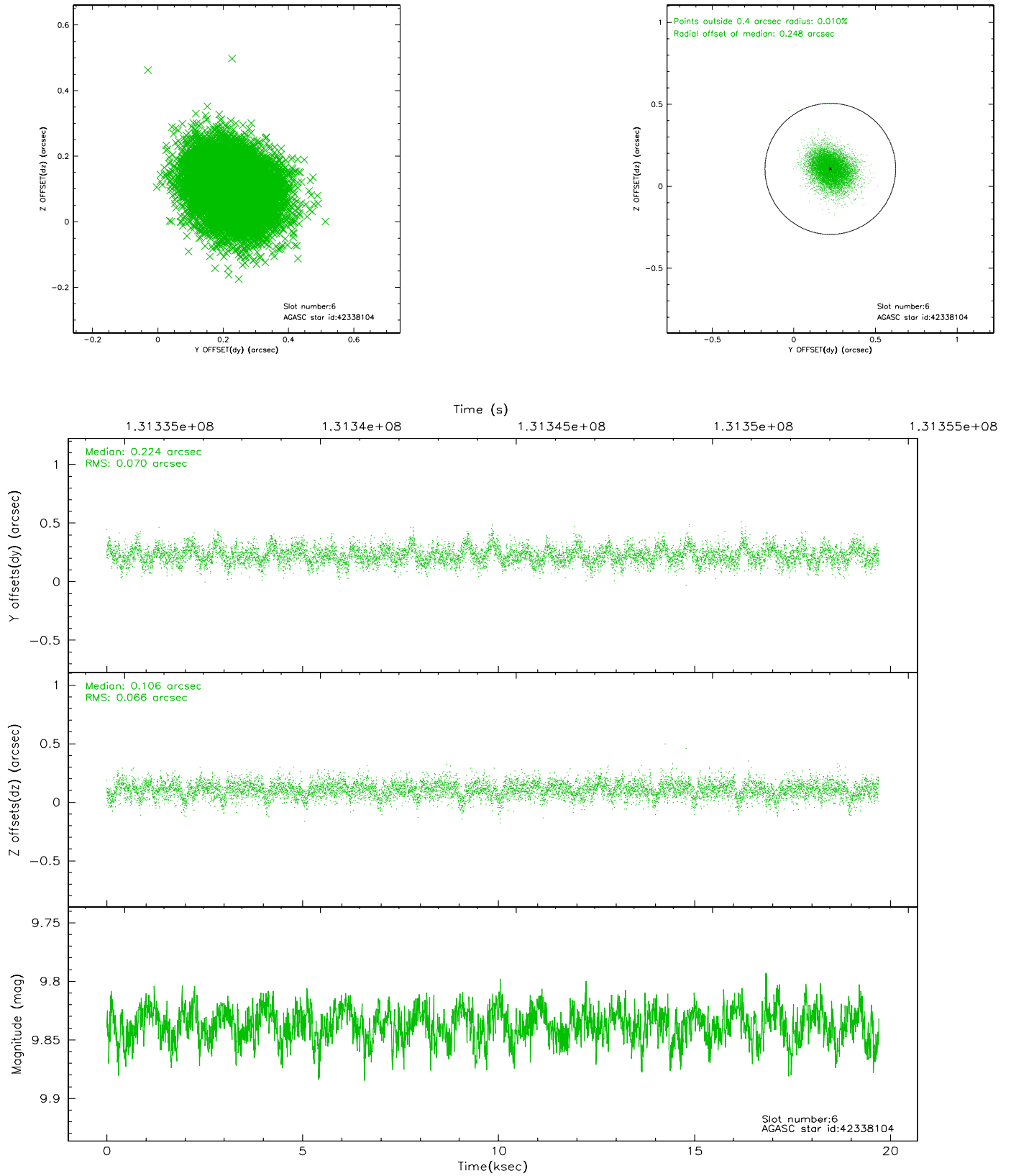
## 2.4.2 Slot 4



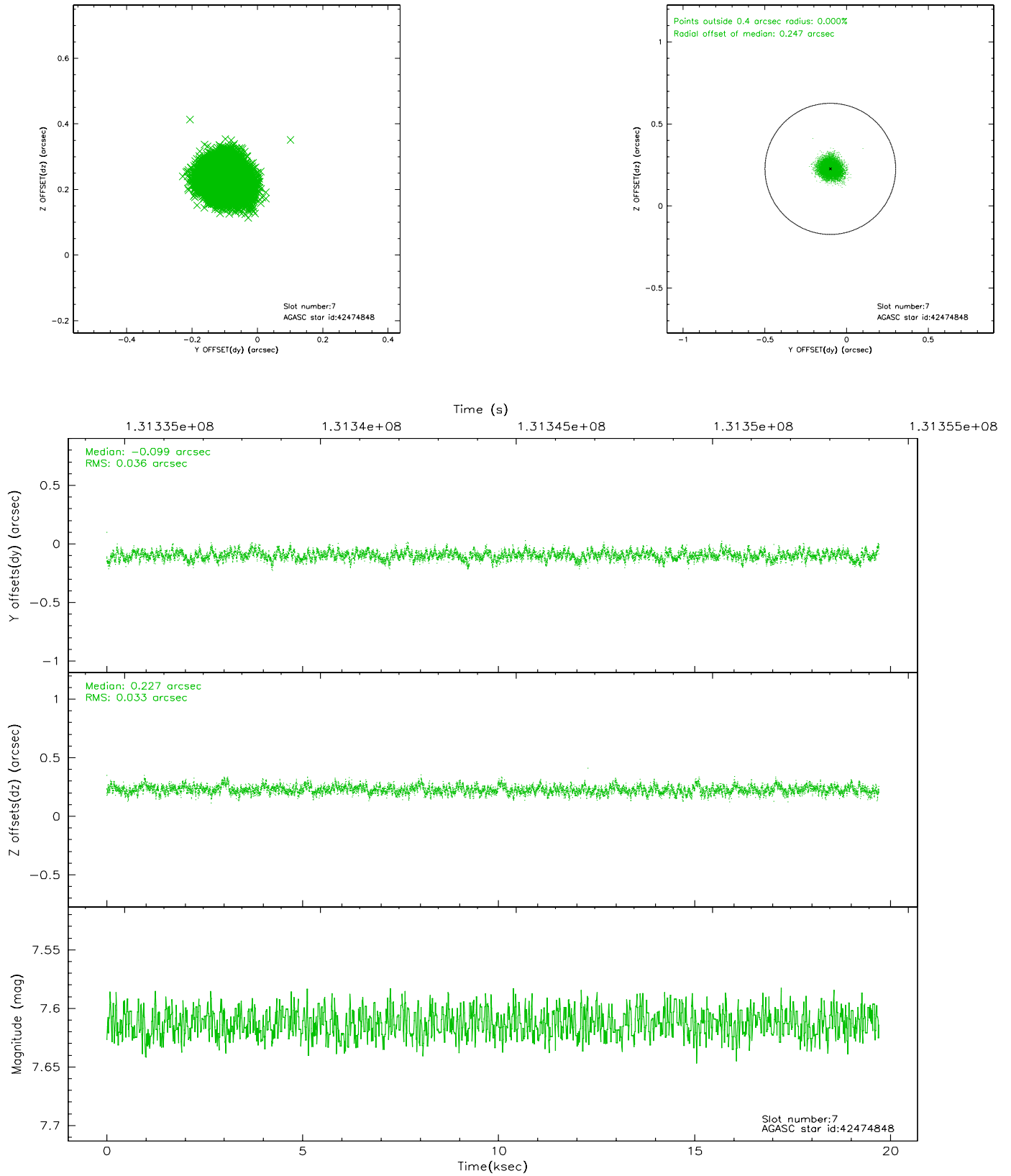
### 2.4.3 Slot 5



## 2.4.4 Slot 6

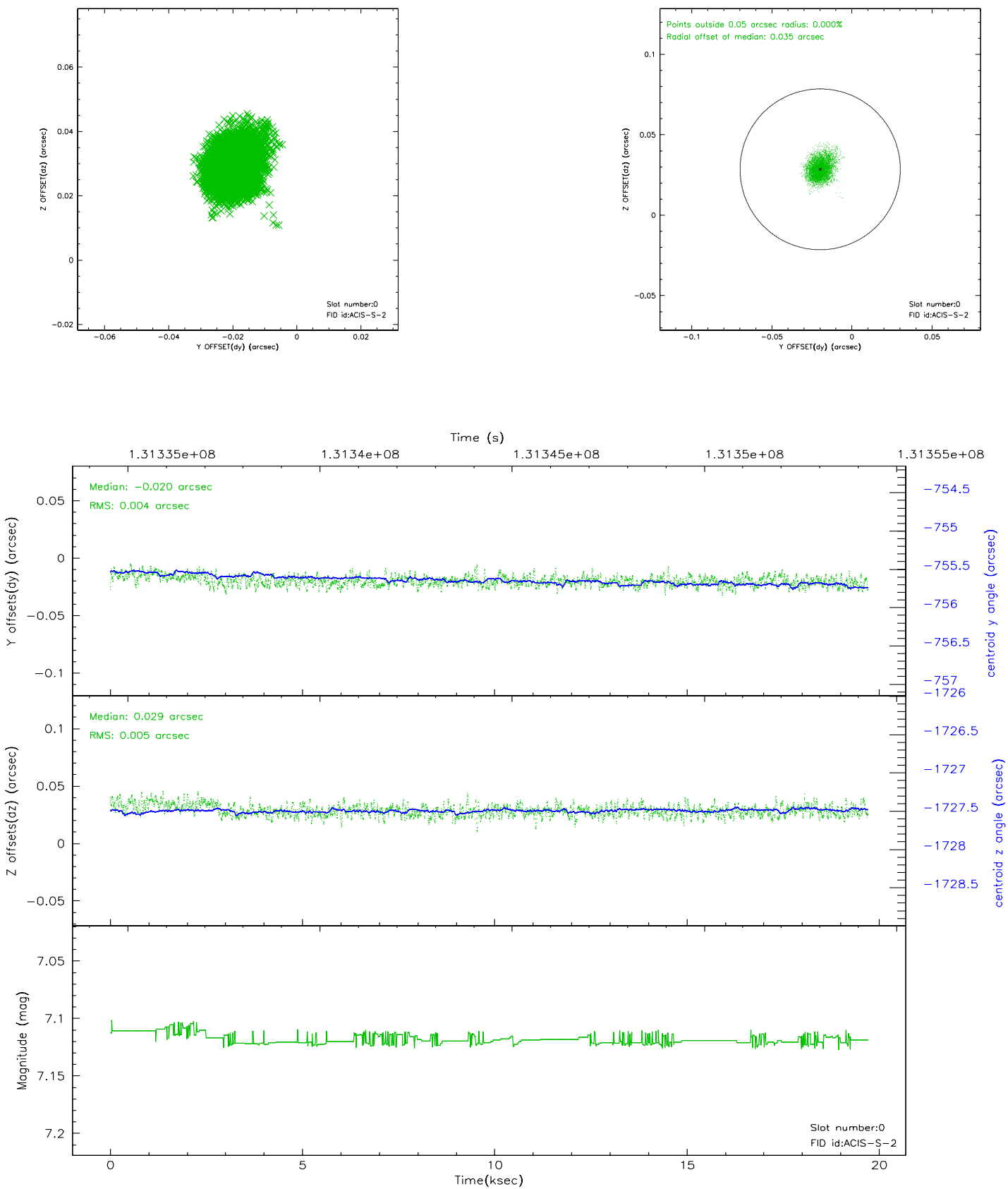


## 2.4.5 Slot 7

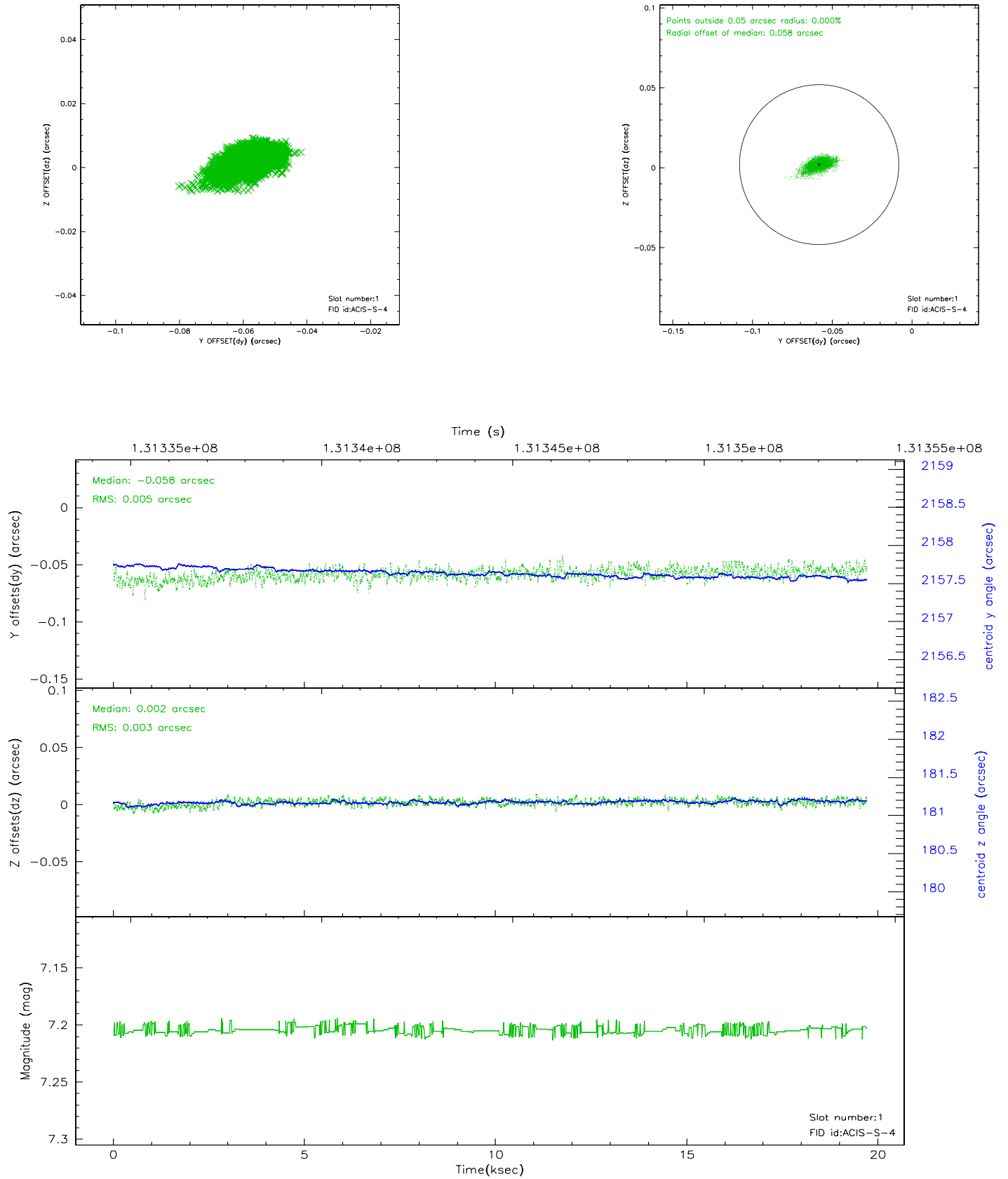


## 2.5 FID Slots

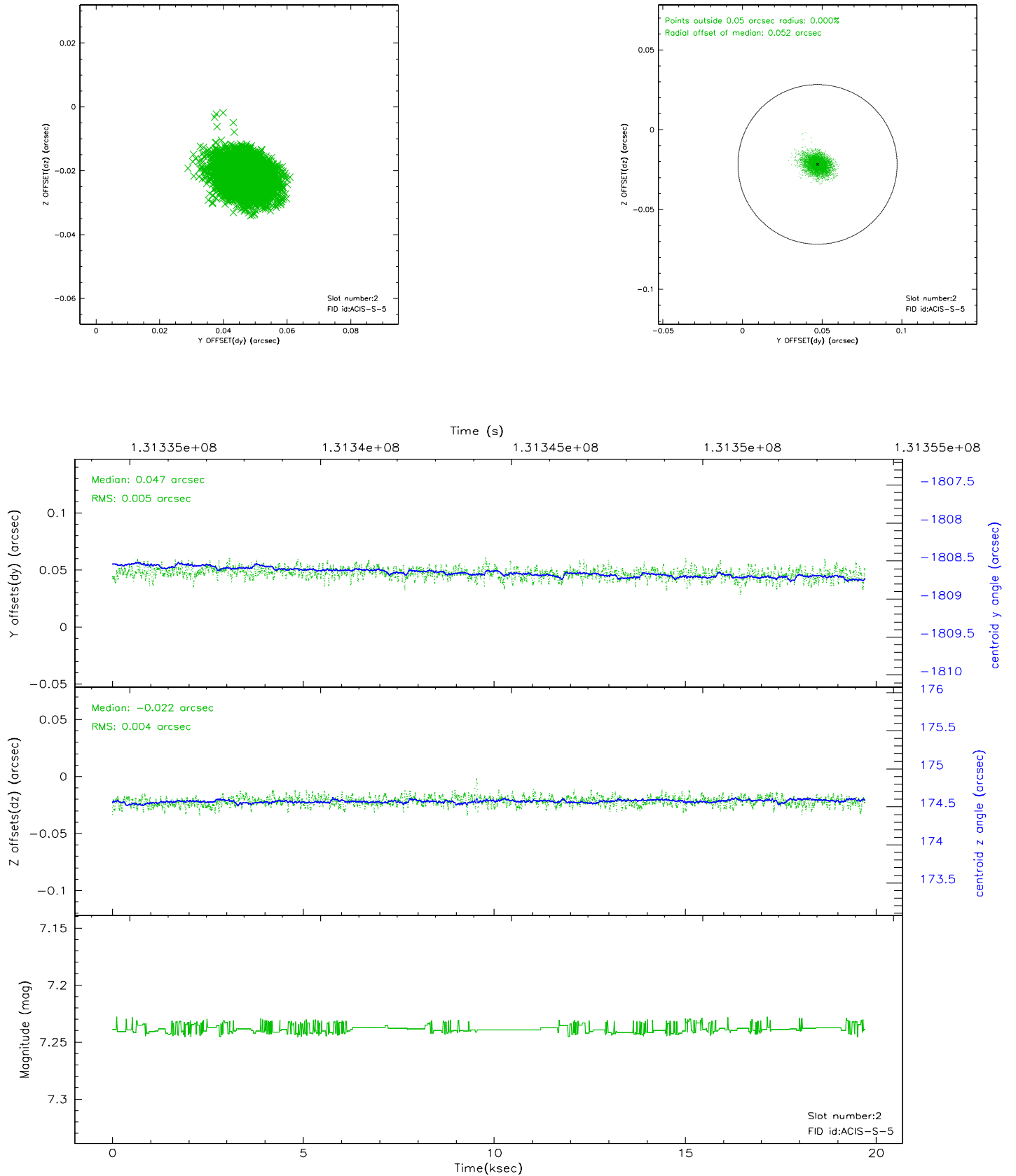
### 2.5.1 Slot 0



## 2.5.2 Slot 1



### 2.5.3 Slot 2





### 3 Point Sources

3.20 arcmin



## A Summary

### A.1 Status

V&V Scientist	Jen Lauer
V&V Date (YYYY-MM-DD)	2006.09.06
V&V Edition	1
V&V Disposition and Status	OK
V&V Charge Time	19.709

### A.2 Comments