

# V&V Reference Report

## L2 ASCDS Version : 7.6.8.1

Observation 3097 - L2 Version 001  
Chandra X-Ray Center

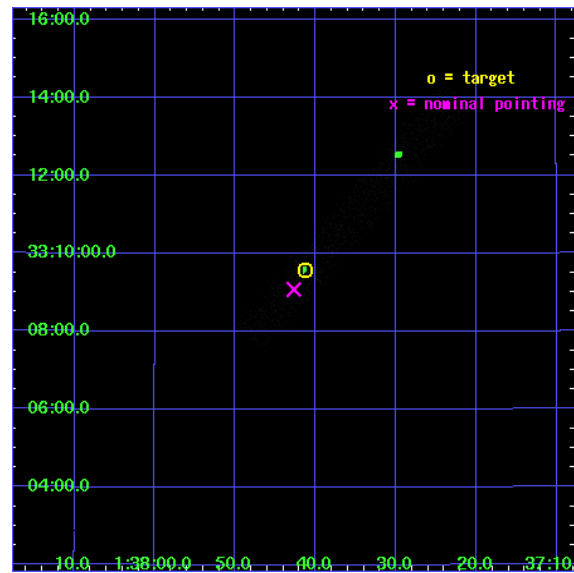
L2 Processing Date : Sep 6 2006

## Contents

<b>1</b>	<b>Front</b>	<b>2</b>
<b>2</b>	<b>OBI</b>	<b>3</b>
2.1	OBI . . . . .	3
2.1.1	Images . . . . .	3
2.1.2	Bias . . . . .	3
2.1.3	Parameters . . . . .	4
2.1.4	Events . . . . .	4
2.2	Compared Parameters . . . . .	5
2.3	Aspect . . . . .	6
2.4	Star Slots . . . . .	9
2.4.1	Slot 3 . . . . .	9
2.4.2	Slot 4 . . . . .	10
2.4.3	Slot 5 . . . . .	11
2.4.4	Slot 6 . . . . .	12
2.4.5	Slot 7 . . . . .	13
2.5	FID Slots . . . . .	14
2.5.1	Slot 0 . . . . .	14
2.5.2	Slot 1 . . . . .	15
2.5.3	Slot 2 . . . . .	16
<b>3</b>	<b>Point Sources</b>	<b>17</b>
<b>A</b>	<b>Summary</b>	<b>18</b>
A.1	Status . . . . .	18
A.2	Comments . . . . .	18

# 1 Front

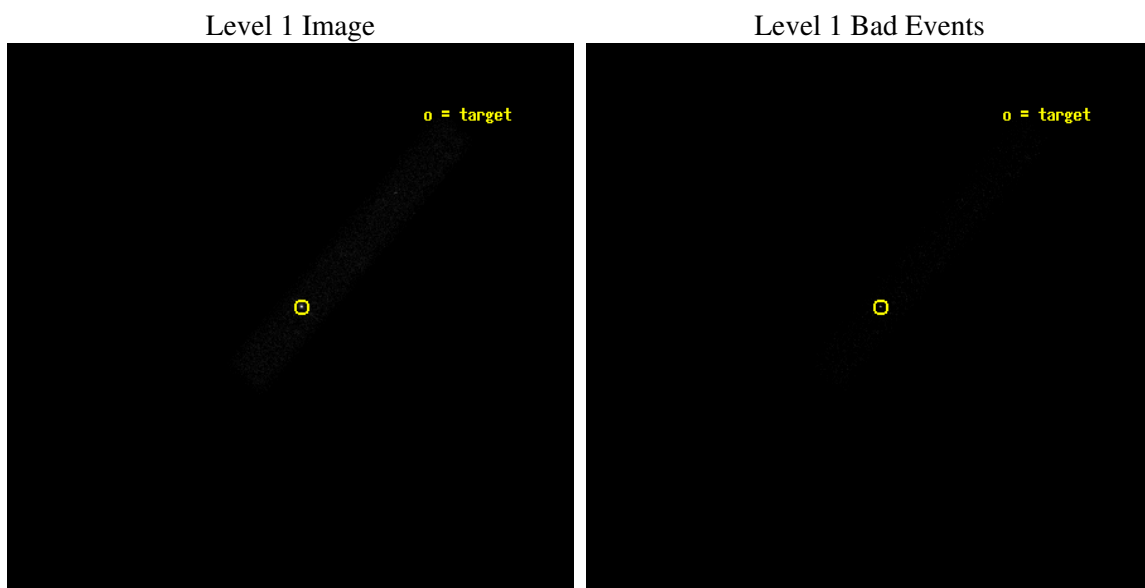
seq_num	700536
obs_id	3097
title	X-RAY IMAGING OF GPS AND CSS QUASARS
observer	Dr Aneta Siemiginowska
object	Q0134+329
dtcycle	0
cycle	P
ra_targ	24.422083
dec_targ	33.159444
ra_nom	24.427944814139
dec_nom	33.151101039707
roll_nom	310.41676739499
revision	2
ontime	10171.200151563
livetime	9224.7416575029
ontime7	10171.200151563
l2events	12508



## 2 OBI

### 2.1 OBI

#### 2.1.1 Images



#### 2.1.2 Bias

Chip 7



### 2.1.3 Parameters

obi_num	1
ascdsver	7.6.8.1
caldbver	3.2.3
date	2006-09-06T07:35:48
revision	2

sched_exp_time	9558.782000
ontime	10418.111221433
ontime7	10418.111221433
l1events	20358

### 2.1.4 Events

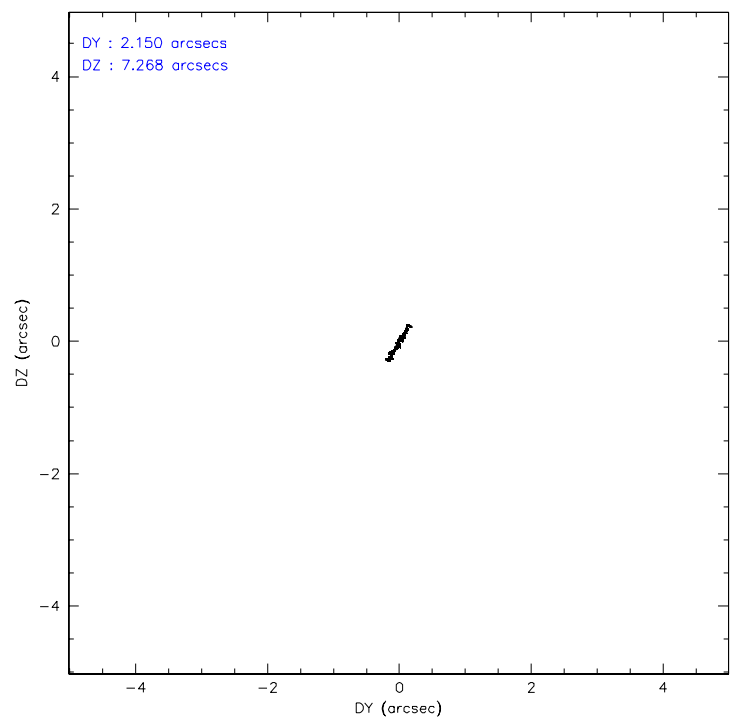
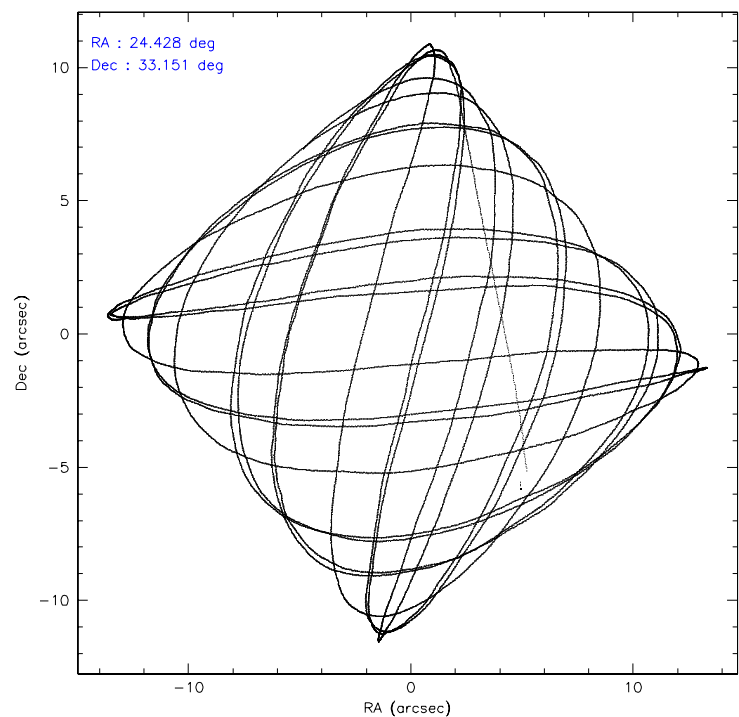
	<b>ccd 7</b>
level 1 events	20358
rejected events	7627
rejected %	37%

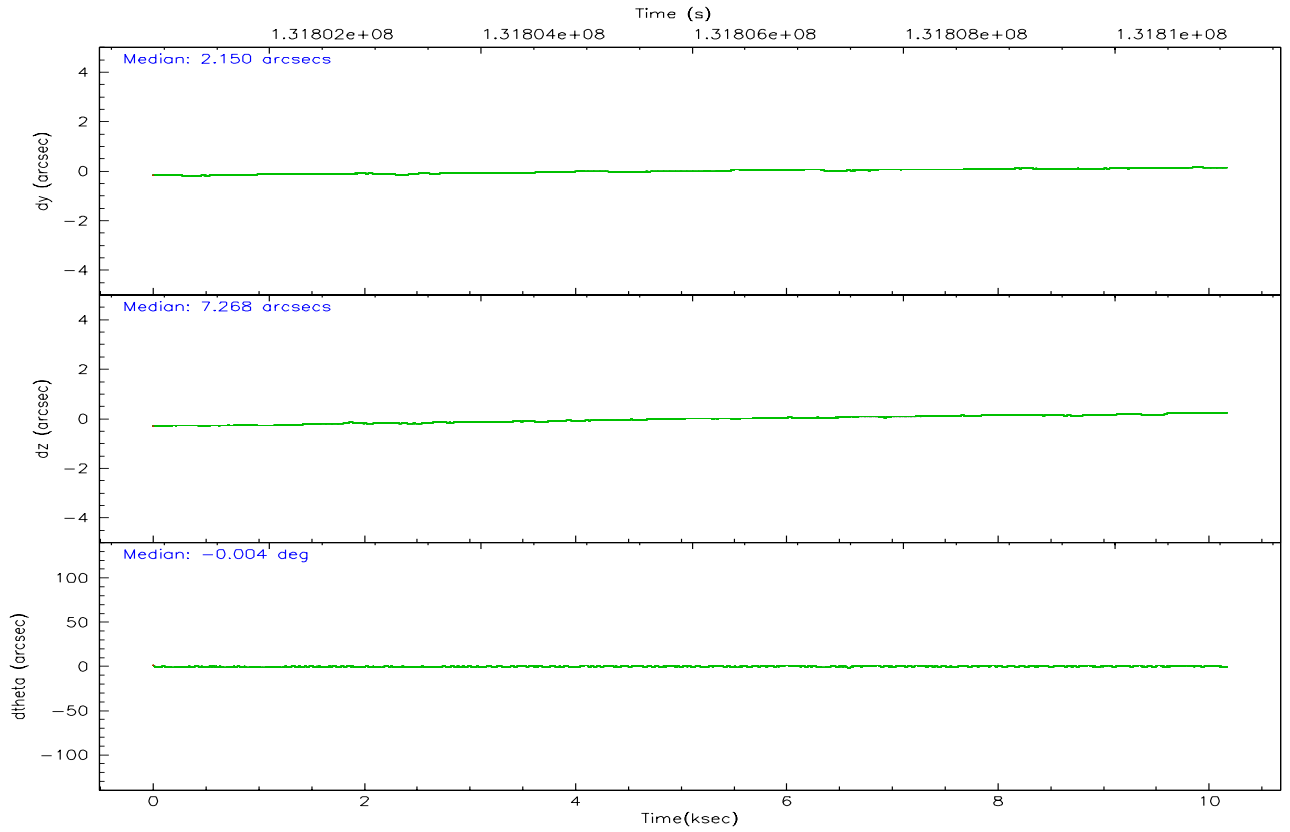
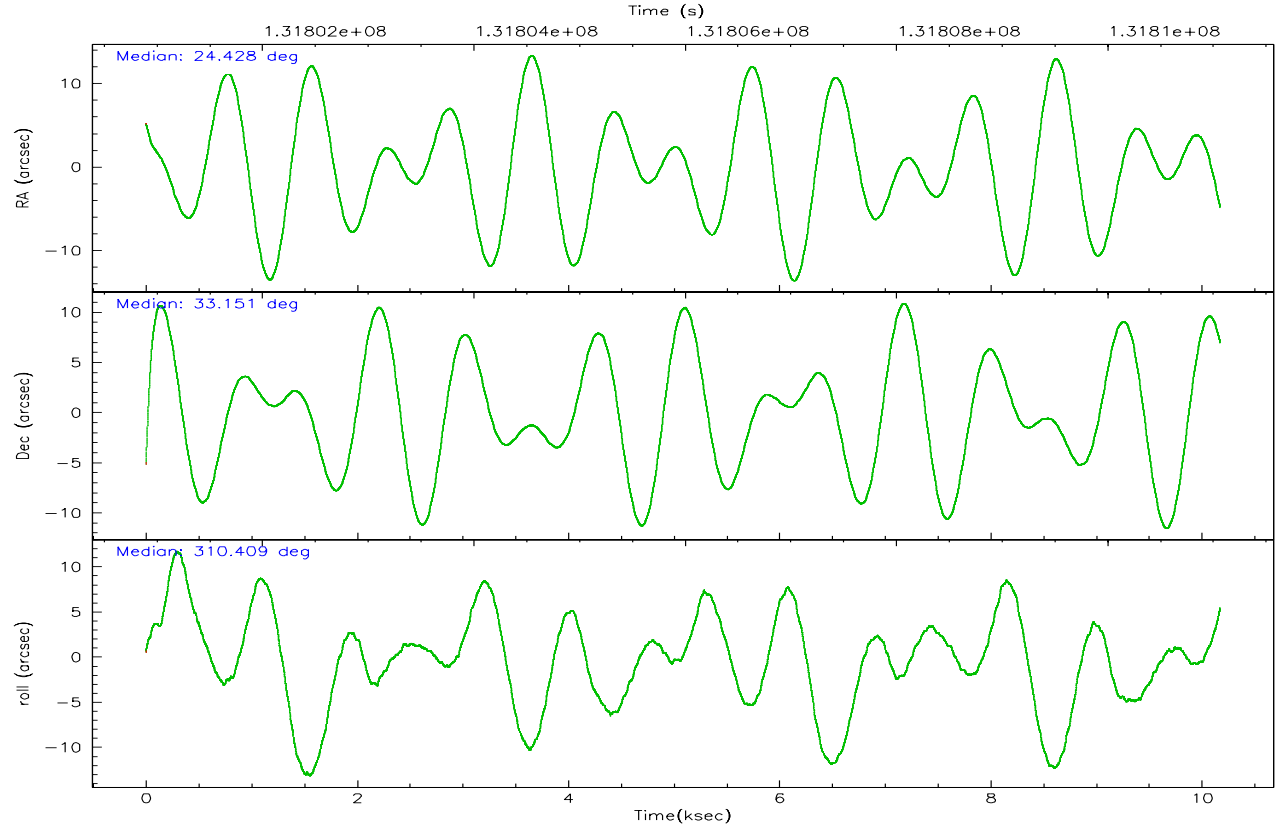
	<b>ccd 7</b>
grade 0 events	3139
	15%
grade 1 events	75
	0%
grade 2 events	3028
	14%
grade 3 events	1461
	7%
grade 4 events	1366
	6%
grade 5 events	1205
	5%
grade 6 events	3937
	19%
grade 7 events	6147
	30%

## 2.2 Compared Parameters

Parameter	Planned	Actual	Parameter	Planned	Actual
Instrument	ACIS	ACIS	Obspar format version number	6	6
Detector	ACIS-7	ACIS-7	Obspar file type	PREDICTED	ACTUAL
Grating	NONE	NONE	Obspar update status	NONE	UPDATED
Data mode	VFAINT	VFAINT	On-chip summing requested	N	N
Observation mode	POINTING	POINTING	Subarray requested	CUSTOM	1/8
Pointing RA	24.397118	24.42794481413872	Subarray start row	449	449
Pointing Dec	33.159869	33.15110103970727	Subarray row count	128	128
Pointing Roll	310.277012	310.4167673949897	Alternating exposures requested	N	N
SIM focus pos (mm)	-0.684267	-0.6828225247311905	Primary exposure time	0.000000	0.4
SIM defocus (mm)	0	0.001444936568705701			
SIM translation stage pos (mm)	-190.132523	-190.1400660498719			
SIM translation stage offset (mm)	0	0.00754346686406393			
Observation start time	131801508.184000	131800338.52388			
Observation start date	2002-03-06T11:30:44	2002-03-06T11:12:18			
Observation end time	131811067.184000	131811381.87433			
Observation end date	2002-03-06T14:10:03	2002-03-06T14:16:21			
Read mode	TIMED	TIMED			

## 2.3 Aspect





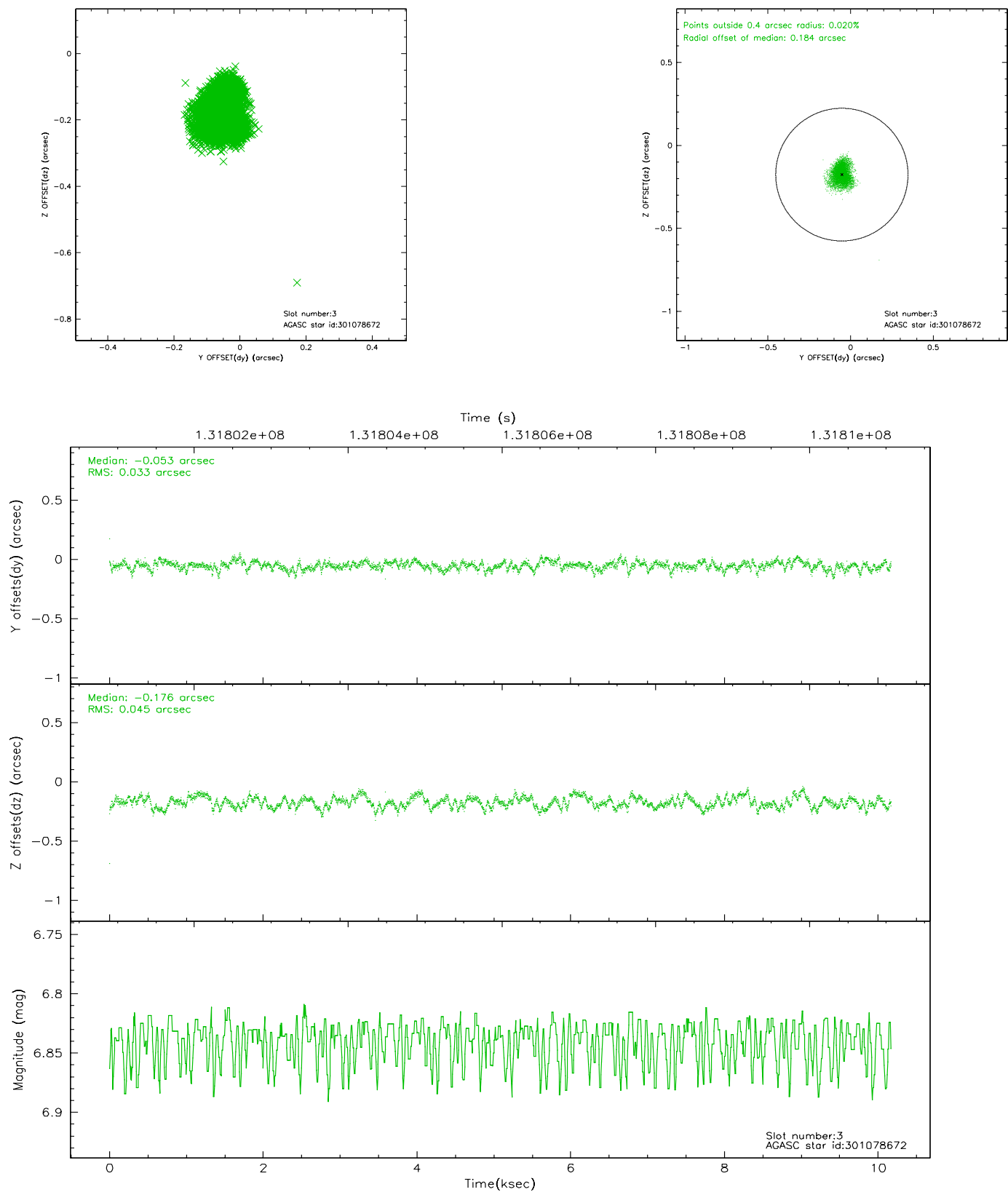
### Slot Statistics

slot	status	id	mag	n_pts	med_dy	med_dz	dr1	dr2	ra	dec	mean_y	mean_z
0	FID	ACIS-S-2	7.11	2482	-0.010	0.017	0.008	0.012	0.000000	0.000000	-754.77	-1728.40
1	FID	ACIS-S-4	7.20	2481	-0.078	0.000	0.006	0.010	0.000000	0.000000	2158.20	179.53
2	FID	ACIS-S-5	7.24	2482	0.056	-0.009	0.007	0.012	0.000000	0.000000	-1806.88	173.78
3	GUIDE	301078672	6.84	4963	-0.053	-0.176	0.059	0.095	23.742068	33.117864	-1164.45	-1601.19
4	GUIDE	301203808	9.00	4961	-0.067	-0.001	0.099	0.157	24.801221	33.692942	-682.55	2165.18
5	GUIDE	301081112	9.45	4960	-0.054	0.013	0.117	0.187	23.544549	33.024503	-1298.32	-2271.30
6	GUIDE	301203520	9.57	4955	0.025	0.134	0.099	0.158	25.039415	33.419443	531.20	2080.15
7	GUIDE	301205280	9.56	4957	0.149	0.024	0.105	0.167	24.859523	33.145019	941.30	1031.58

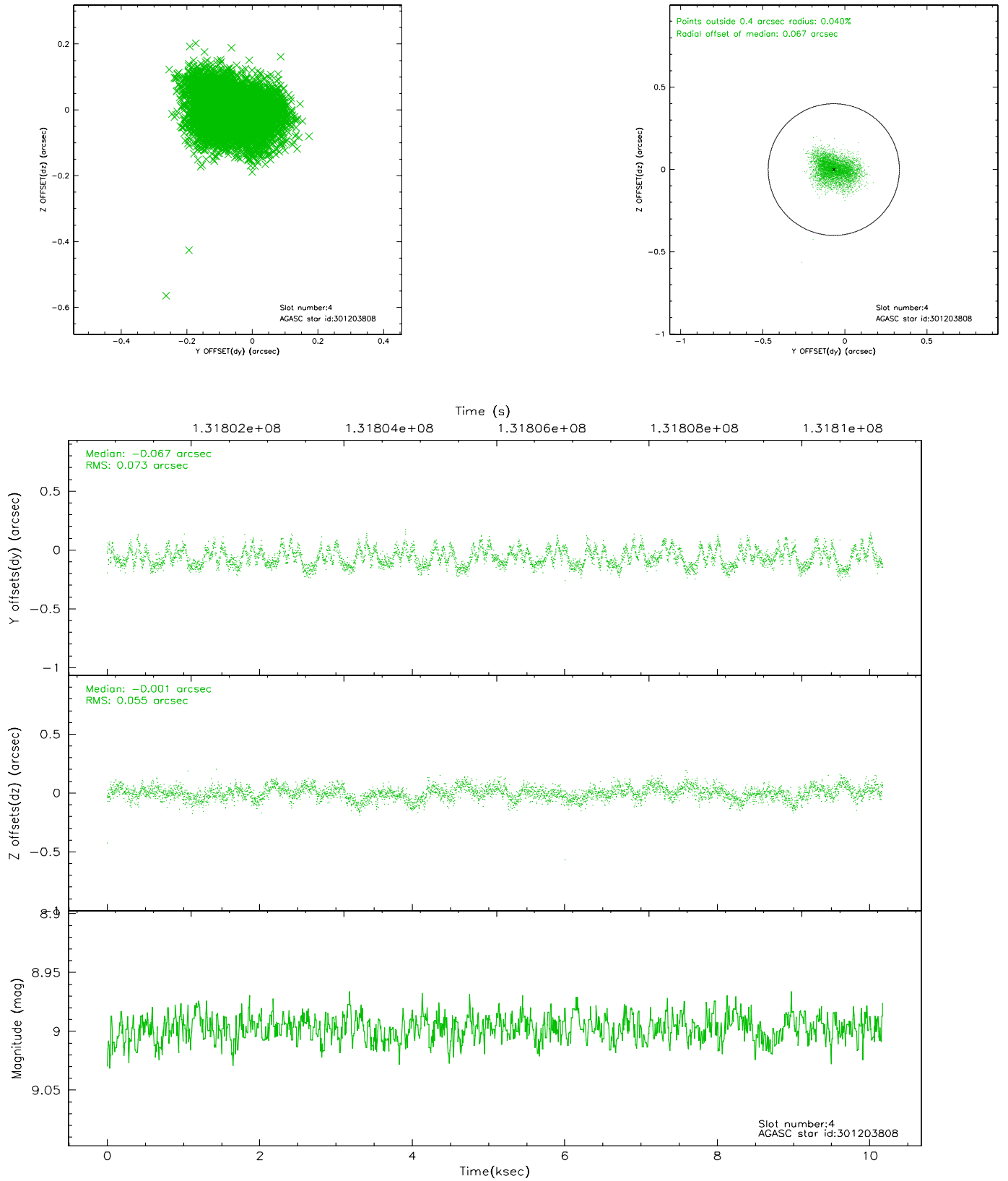


## 2.4 Star Slots

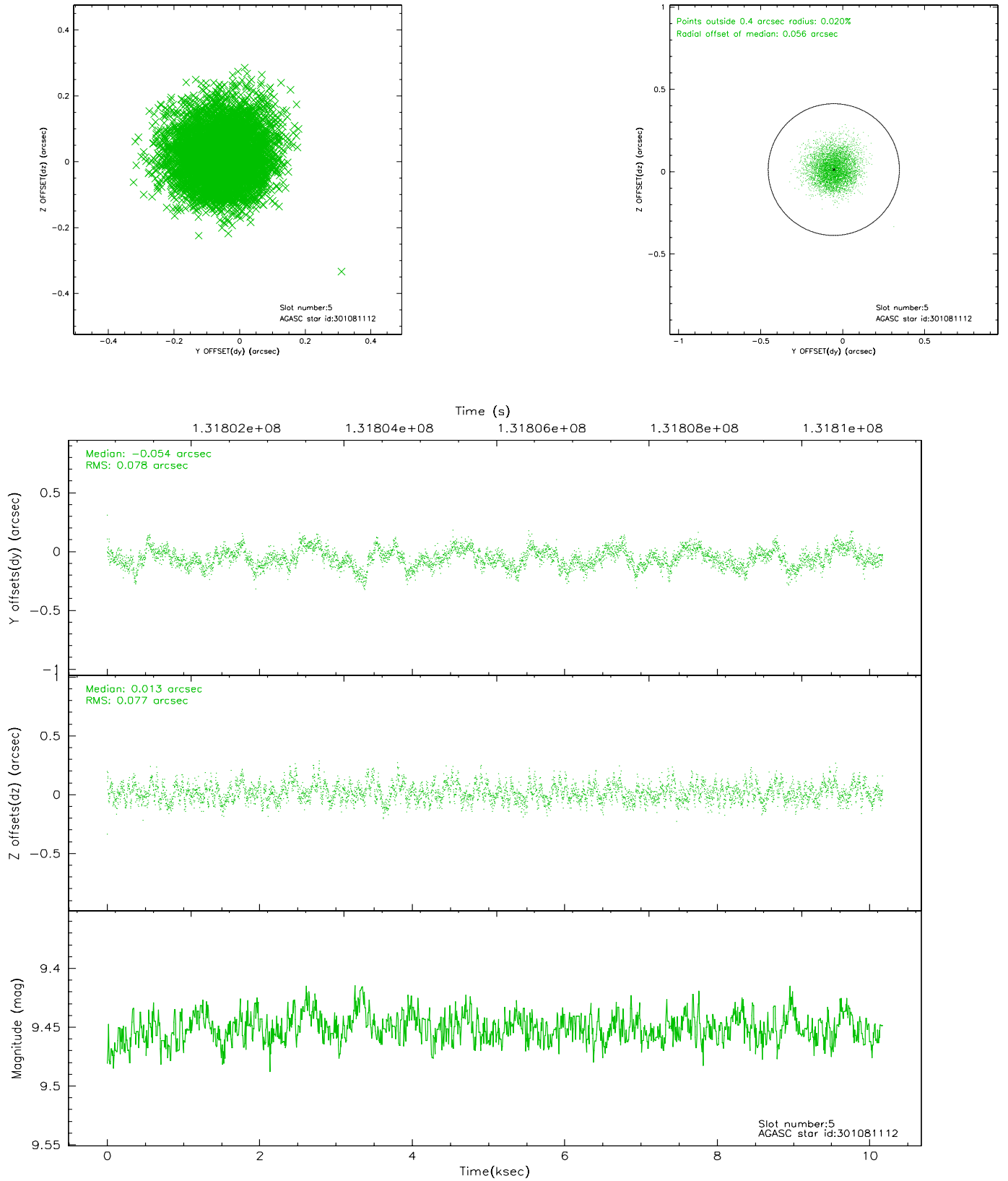
### 2.4.1 Slot 3



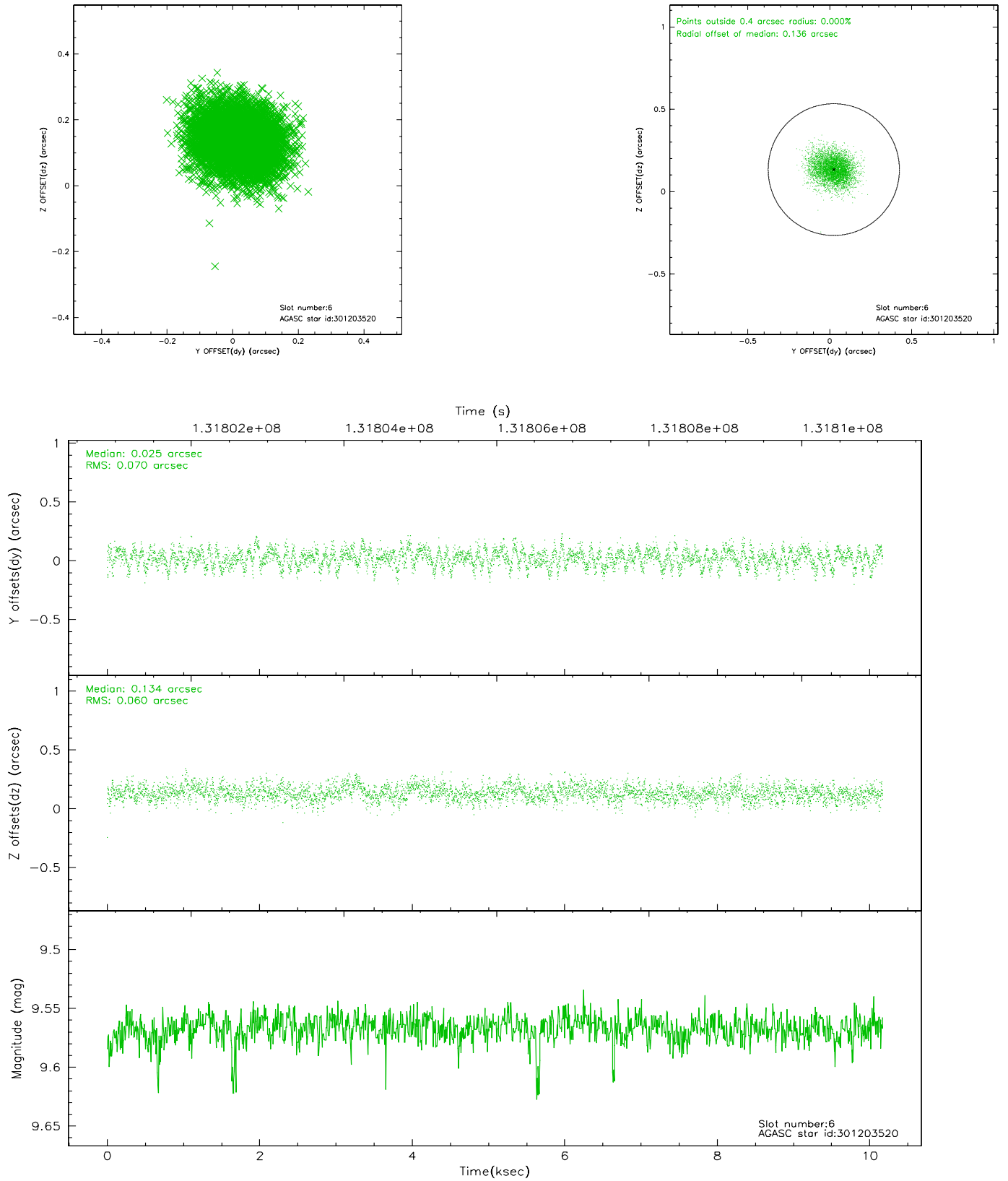
## 2.4.2 Slot 4



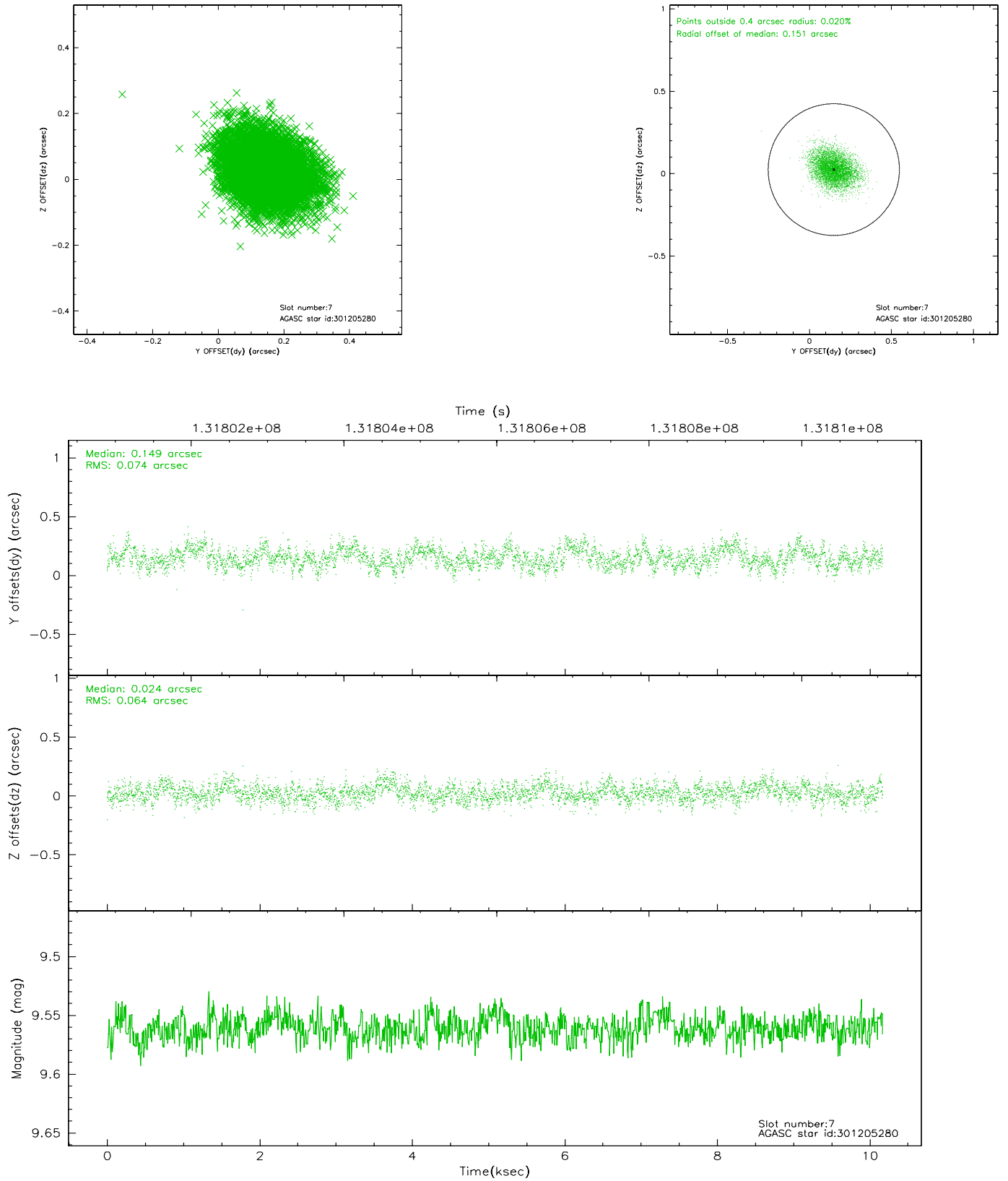
### 2.4.3 Slot 5



## 2.4.4 Slot 6

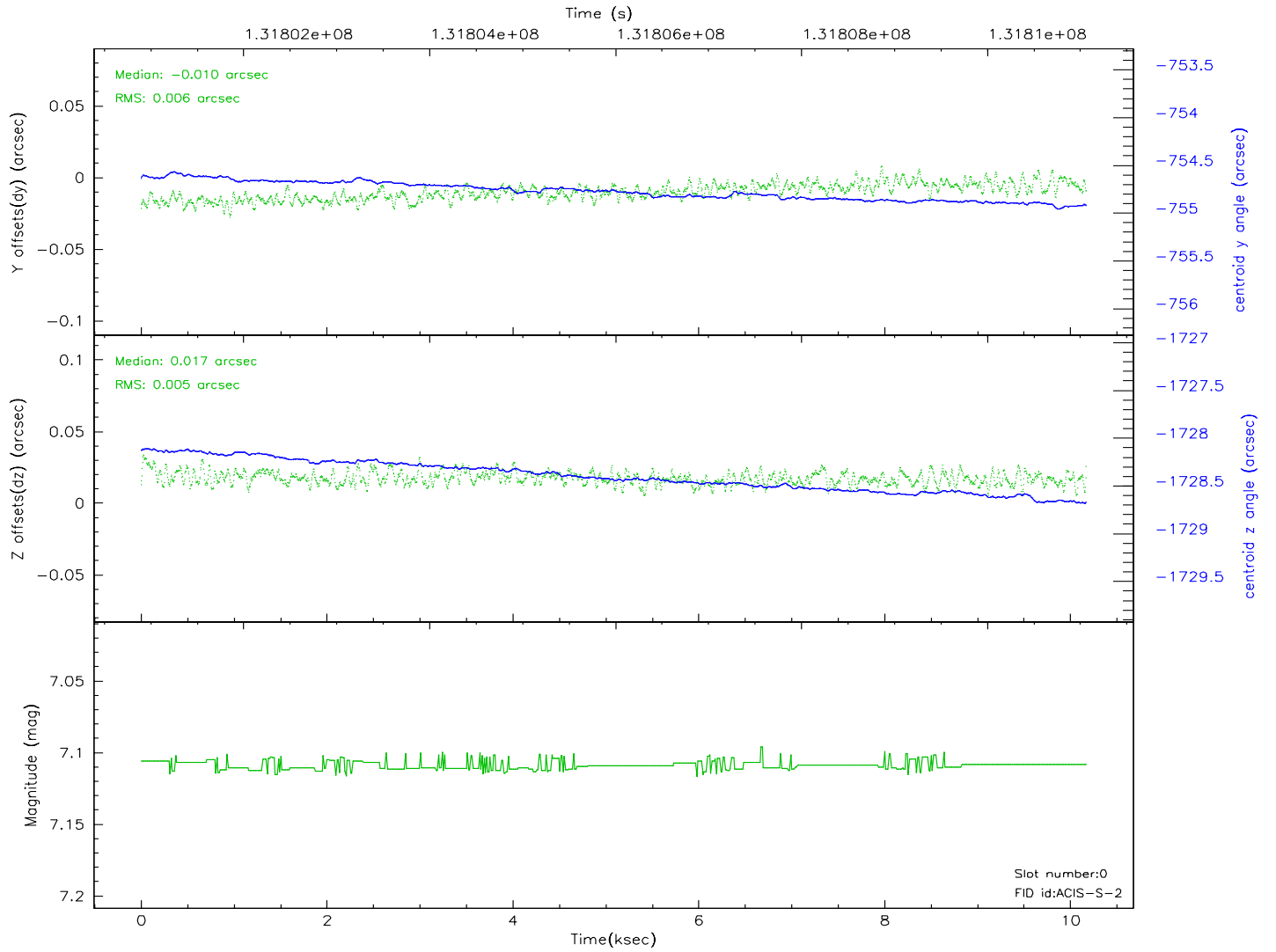
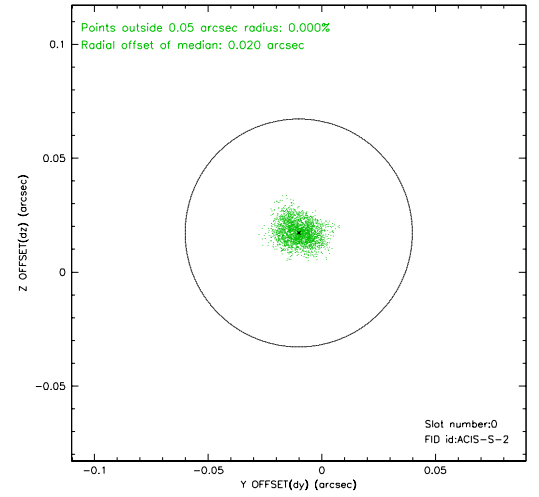
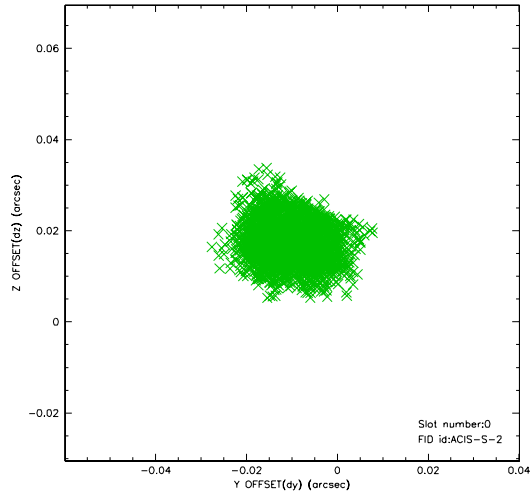


## 2.4.5 Slot 7

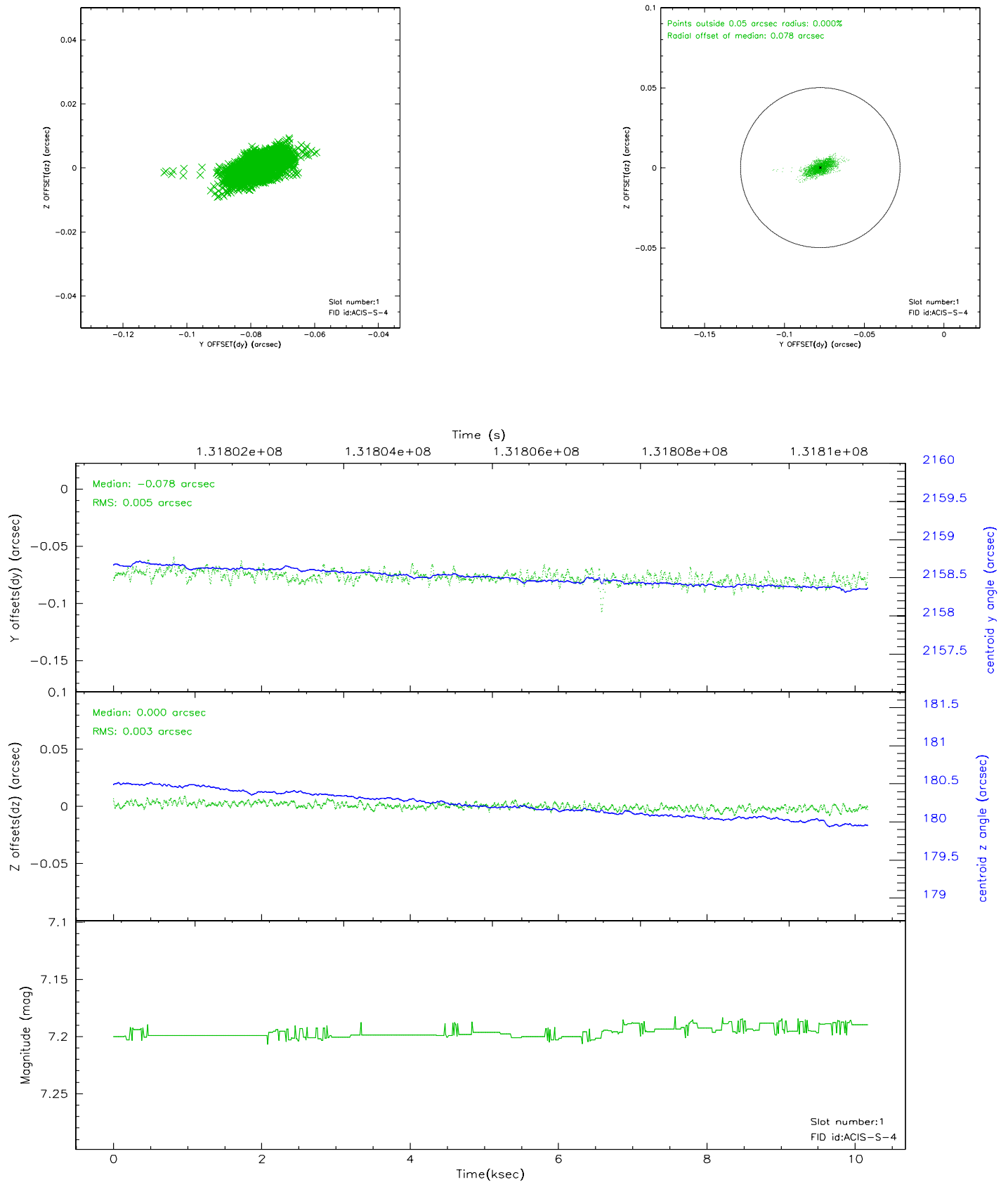


## 2.5 FID Slots

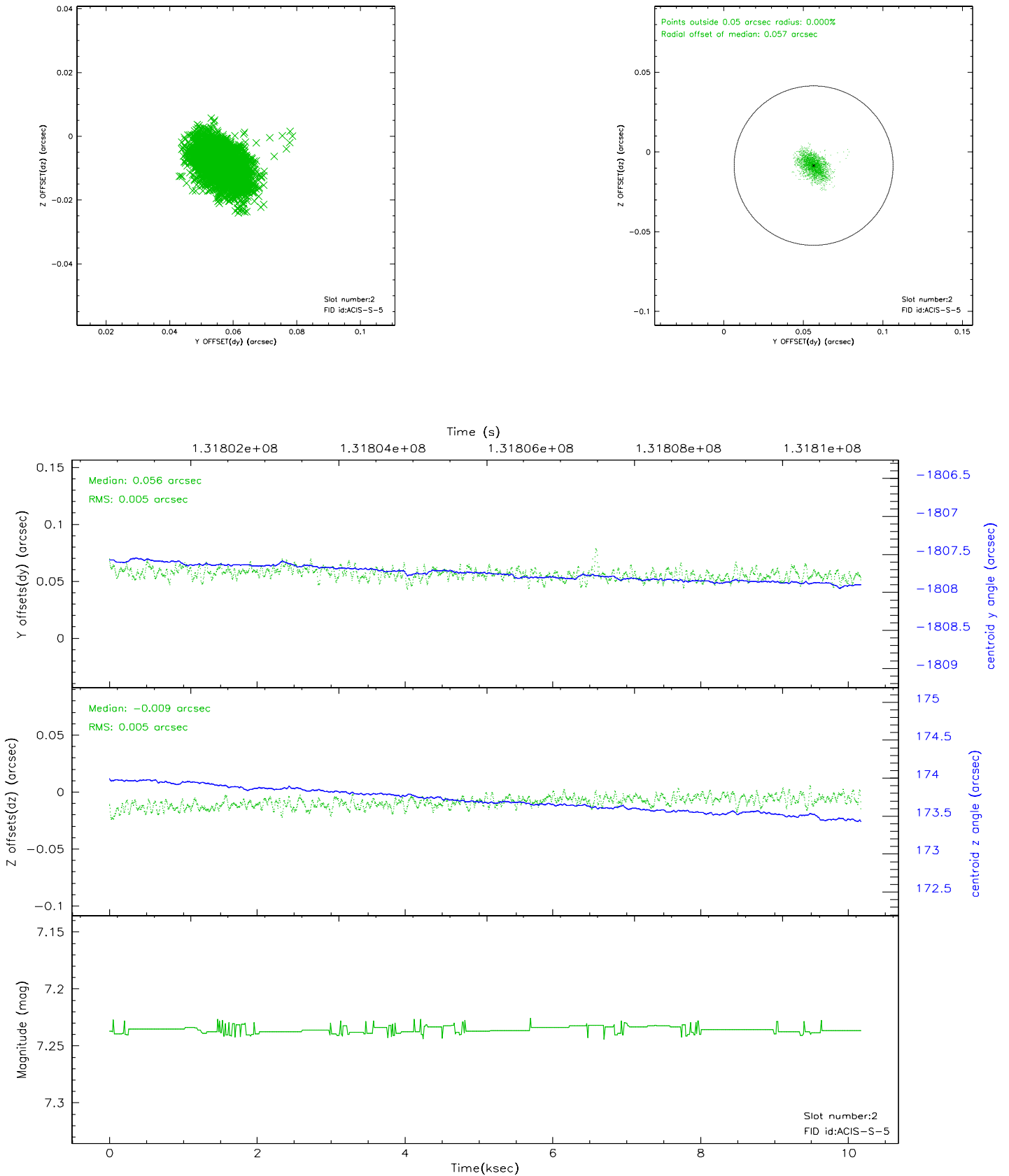
### 2.5.1 Slot 0



## 2.5.2 Slot 1



### 2.5.3 Slot 2





### 3 Point Sources

4.40 arcmin



## A Summary

### A.1 Status

V&V Scientist	Jen Lauer
V&V Date (YYYY-MM-DD)	2006.09.06
V&V Edition	1
V&V Disposition and Status	OK
V&V Charge Time	10.171

### A.2 Comments