

# V&V Reference Report

## L2 ASCDS Version : 7.6.9

Observation 3090 - L2 Version 001  
Chandra X-Ray Center

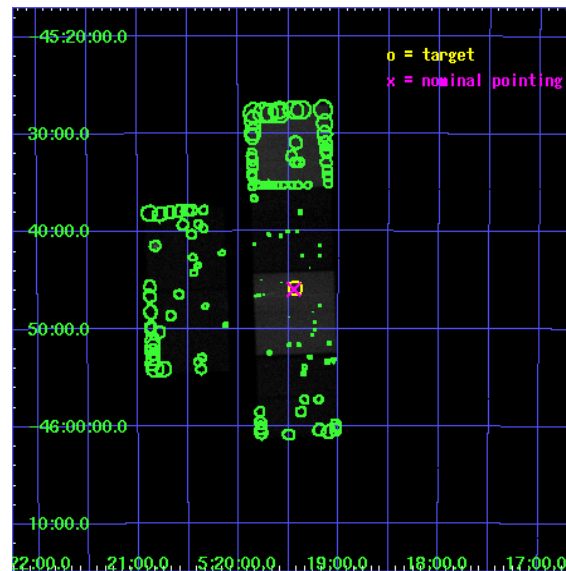
L2 Processing Date : Oct 4 2006

## Contents

<b>1</b>	<b>Front</b>	<b>2</b>
<b>2</b>	<b>OBI</b>	<b>3</b>
2.1	OBI . . . . .	3
2.1.1	Images . . . . .	3
2.1.2	Bias . . . . .	3
2.1.3	Parameters . . . . .	4
2.1.4	Events . . . . .	4
2.2	Compared Parameters . . . . .	5
2.3	Aspect . . . . .	6
2.4	Star Slots . . . . .	9
2.4.1	Slot 3 . . . . .	9
2.4.2	Slot 4 . . . . .	10
2.4.3	Slot 5 . . . . .	11
2.4.4	Slot 6 . . . . .	12
2.4.5	Slot 7 . . . . .	13
2.5	FID Slots . . . . .	14
2.5.1	Slot 0 . . . . .	14
2.5.2	Slot 1 . . . . .	15
2.5.3	Slot 2 . . . . .	16
<b>3</b>	<b>Point Sources</b>	<b>17</b>
<b>A</b>	<b>Summary</b>	<b>18</b>
A.1	Status . . . . .	18
A.2	Comments . . . . .	18

# 1 Front

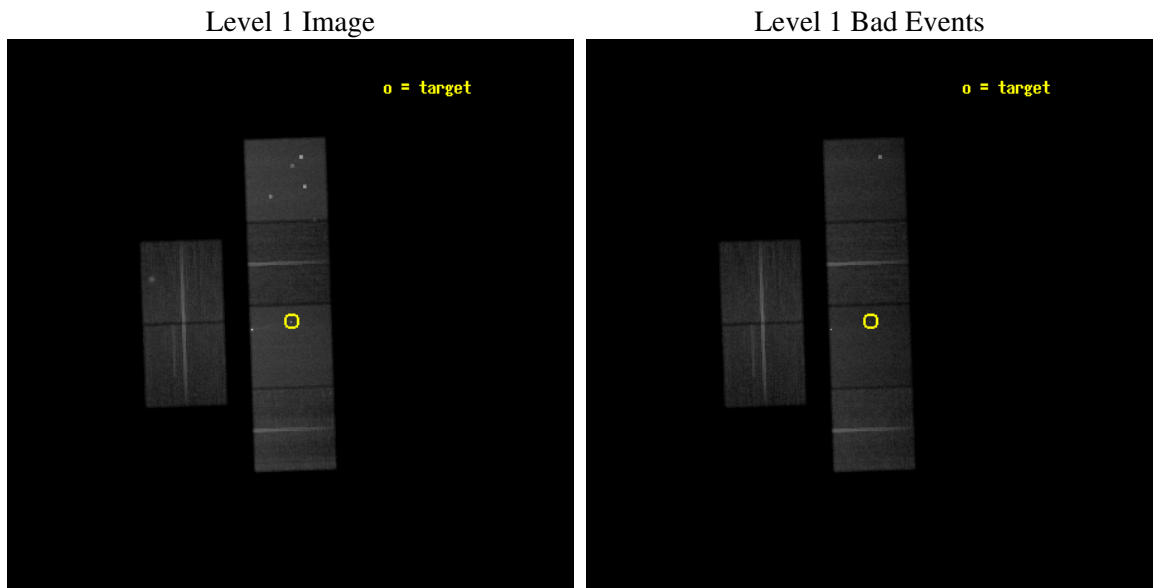
seq_num	700529
obs_id	3090
title	THE POWERFUL RADIO GALAXY PICTOR A
observer	Prof. Andrew Wilson
object	PICTOR A - WEST
dtcycle	0
cycle	P
ra_targ	79.859167
dec_targ	-45.764861
ra_nom	79.861500459238
dec_nom	-45.76642957292
roll_nom	88.058299139153
revision	2
ontime	46956.75886479
livetime	46362.164110079
ontime2	46953.517864615
ontime3	46959.99982506
ontime5	46959.99982506
ontime6	46959.99982506
ontime7	46956.75886479
ontime8	46959.99982506
l2events	508414



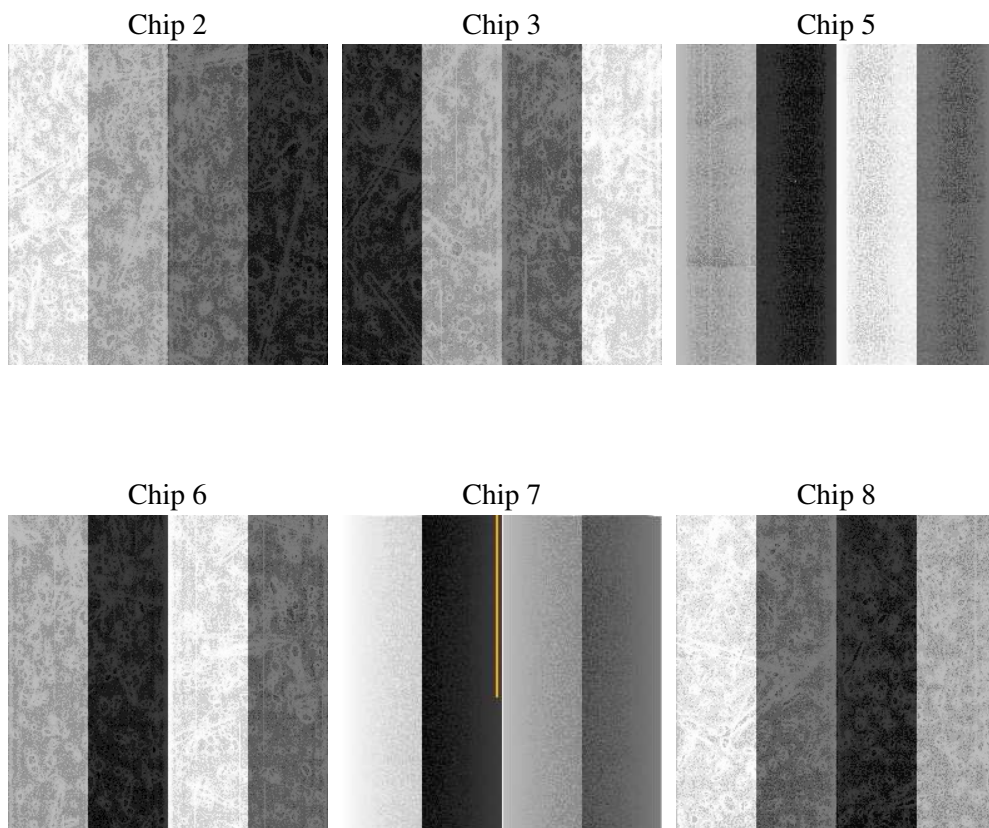
## 2 OBI

### 2.1 OBI

#### 2.1.1 Images



#### 2.1.2 Bias



### 2.1.3 Parameters

obi_num	0
ascdsver	7.6.9
caldsver	3.2.3
date	2006-10-04T12:41:26
revision	2

sched_exp_time	47000.000000
ontime	46962.107782036
ontime2	46958.866781861
ontime3	46965.348742306
ontime5	46965.348742306
ontime6	46965.348712385
ontime7	46962.107782036
ontime8	46965.348712385
l1events	2175085

### 2.1.4 Events

	ccd 2	ccd 3	ccd 5	ccd 6	ccd 7	ccd 8
level 1 events	310501	285076	468471	294344	444102	372591
rejected events	272564	251049	247317	258506	251338	296055
rejected %	87%	88%	52%	87%	56%	79%

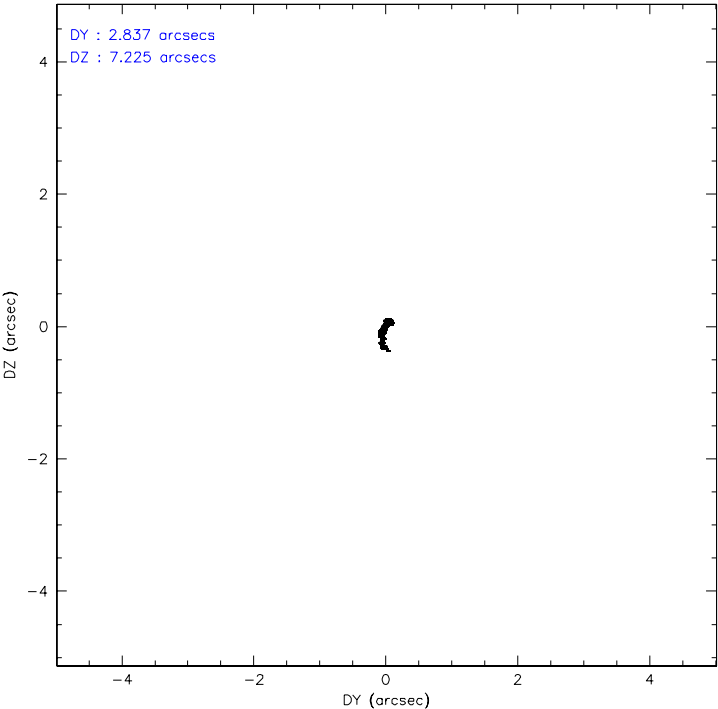
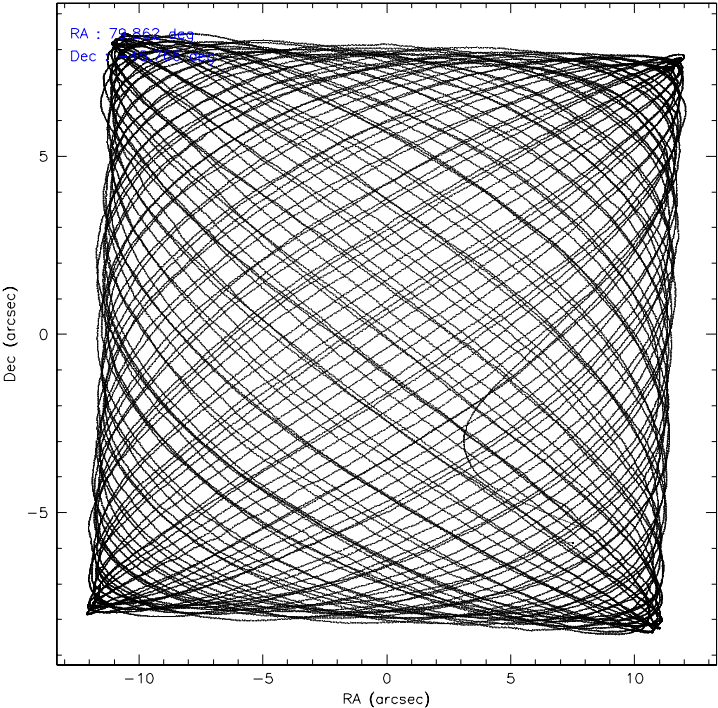
	ccd 2	ccd 3	ccd 5	ccd 6	ccd 7	ccd 8
grade 0 events	18205	15077	31343	14983	17142	24761
	5%	5%	6%	5%	3%	6%
grade 1 events	178	158	4300	157	661	217
	0%	0%	0%	0%	0%	0%
grade 2 events	7248	6396	66473	7161	48222	16330
	2%	2%	14%	2%	10%	4%
grade 3 events	3412	3446	4959	3470	11361	8033
	1%	1%	1%	1%	2%	2%
grade 4 events	3358	3462	4665	3378	11009	7580
	1%	1%	0%	1%	2%	2%
grade 5 events	11504	12607	21097	13069	27266	16874
	3%	4%	4%	4%	6%	4%
grade 6 events	5717	5650	113749	6855	105065	19839
	1%	1%	24%	2%	23%	5%
grade 7 events	260879	238280	221885	245271	223376	278957
	84%	83%	47%	83%	50%	74%

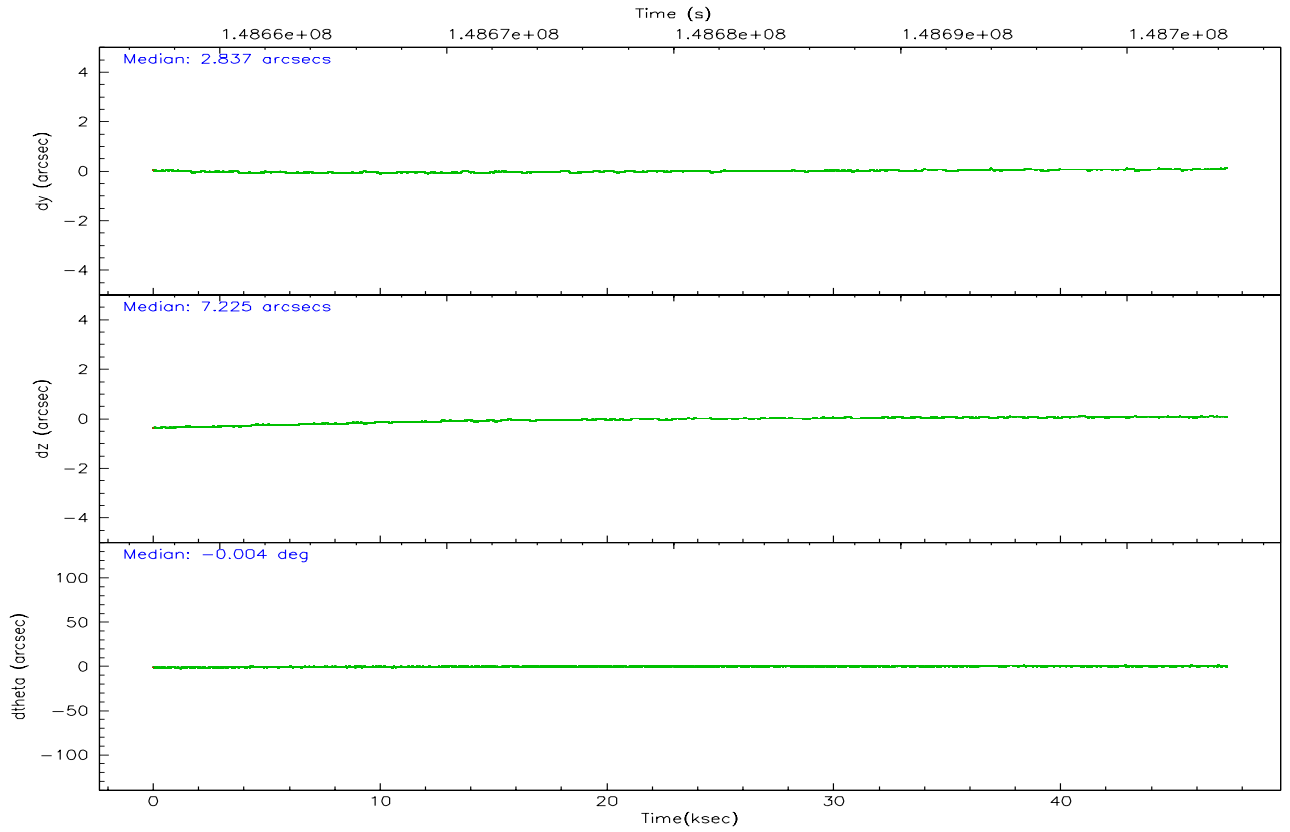
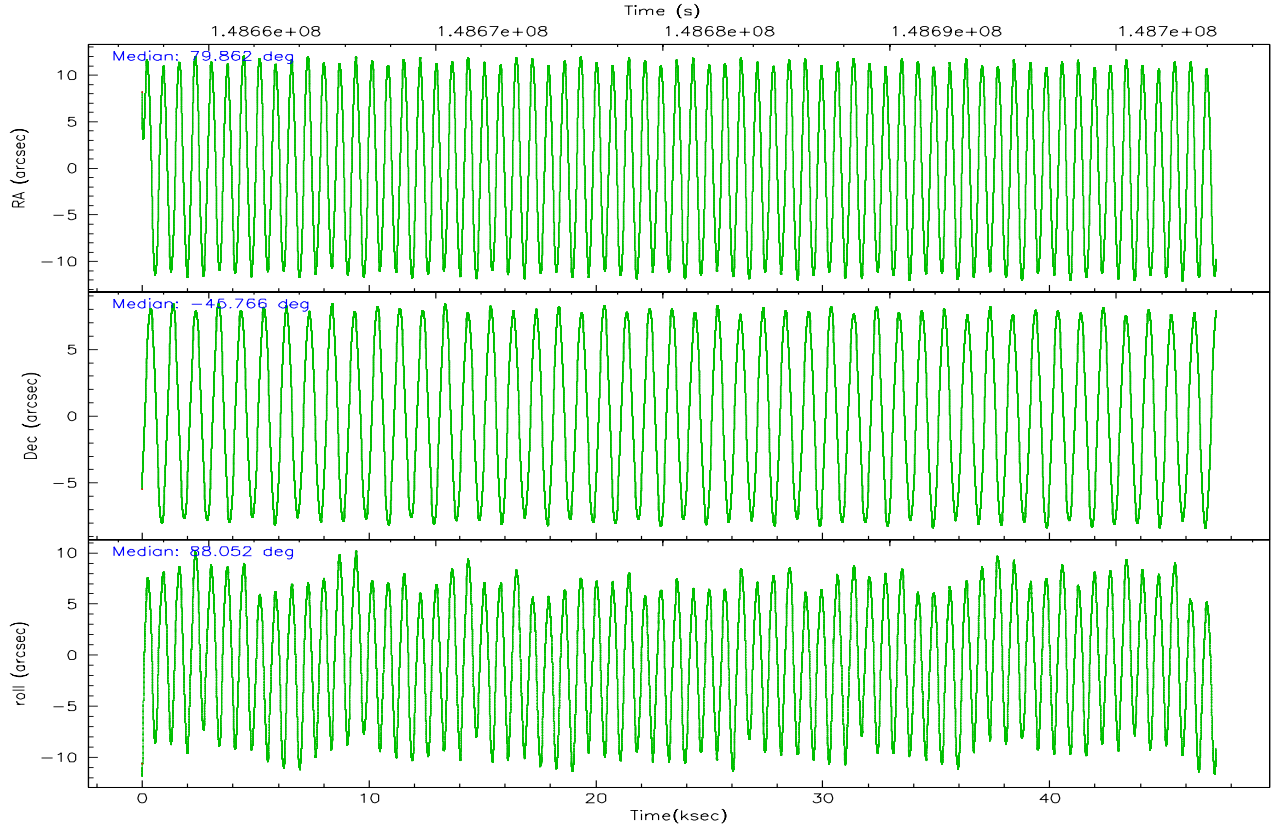


## 2.2 Compared Parameters

Parameter	Planned	Actual	Parameter	Planned	Actual
Instrument	ACIS	ACIS	Obspar format version number	6	6
Detector	ACIS-235678	ACIS-235678	Obspar file type	PREDICTED	ACTUAL
Grating	NONE	NONE	Obspar update status	NONE	UPDATED
Data mode	FAINT	FAINT	Number of optional ACIS chips dropped	0	0
Observation mode	POINTING	POINTING	On-chip summing requested	N	N
Pointing RA	79.880313	79.86150045923814	Subarray requested	NONE	NONE
Pointing Dec	-45.790300	-45.76642957291966	Alternating exposures requested	N	N
Pointing Roll	87.915161	88.05829913915275	Primary exposure time	0.000000	3.2
SIM focus pos (mm)	-0.684267	-0.6828225247311905			
SIM defocus (mm)	0	0.001444936568705701			
SIM translation stage pos (mm)	-190.132523	-190.1425803651734			
SIM translation stage offset (mm)	0	0.01005778216563158			
Observation start time	148657396.184000	148656350.95094			
Observation start date	2002-09-17T13:42:12	2002-09-17T13:25:50			
Observation end time	148704396.184000	148704964.65295			
Observation end date	2002-09-18T02:45:32	2002-09-18T02:56:04			
Read mode	TIMED	TIMED			

2.3 Aspect



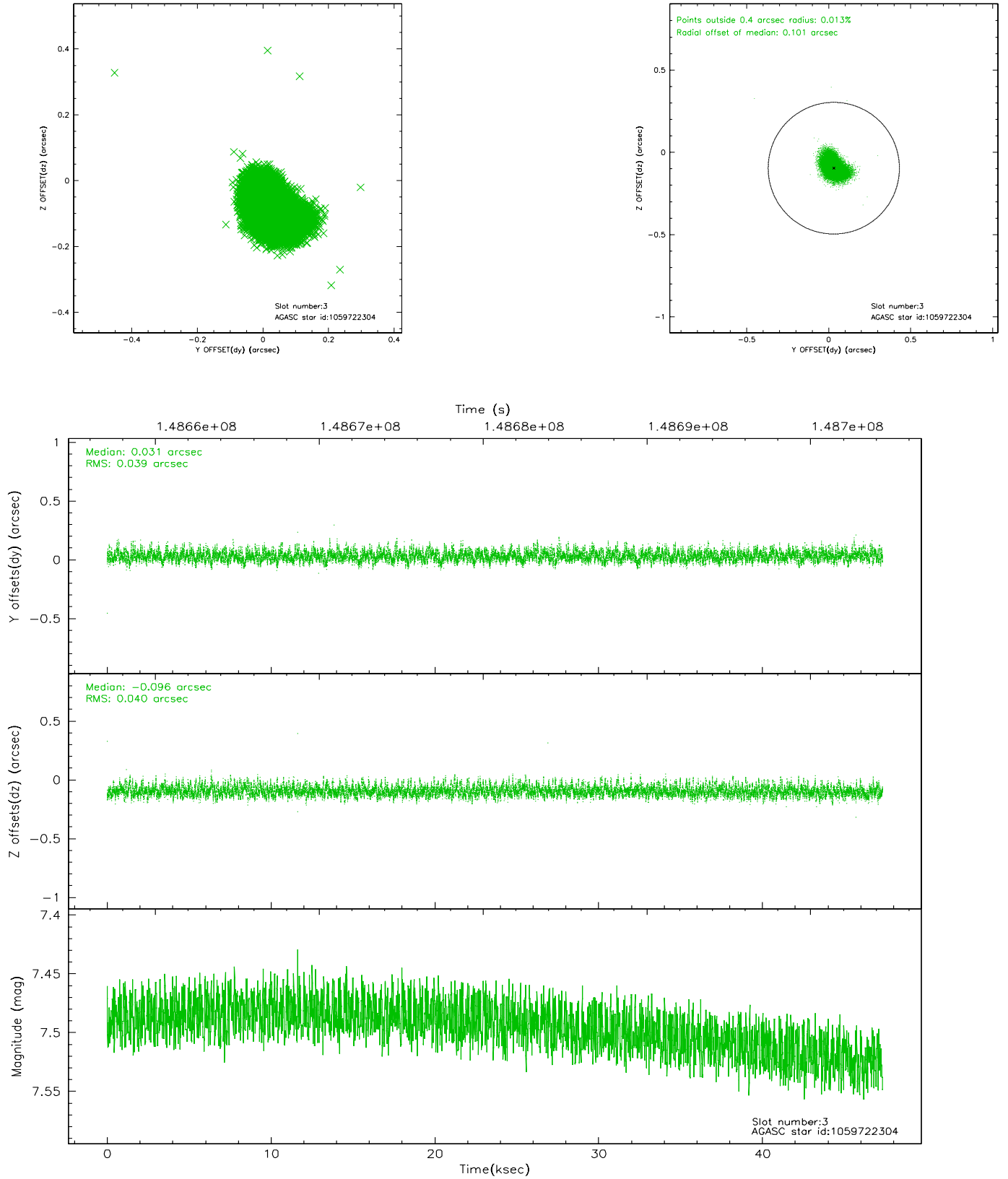


### Slot Statistics

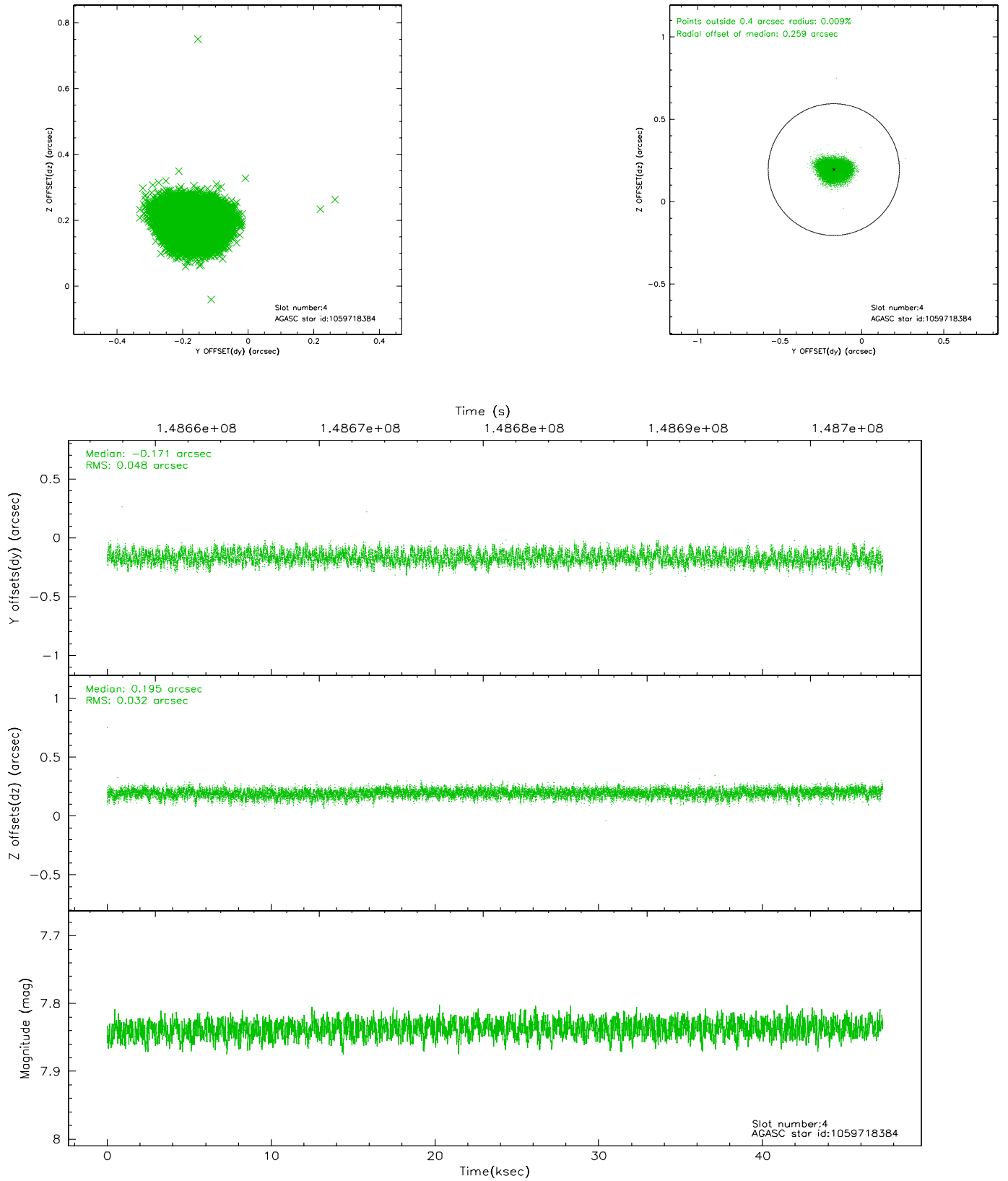
slot	status	id	mag	n_pts	med_dy	med_dz	dr1	dr2	ra	dec	mean_y	mean_z
0	FID	ACIS-S-2	7.11	11547	-0.007	0.026	0.008	0.013	0.000000	0.000000	-755.48	-1728.27
1	FID	ACIS-S-4	7.20	11547	-0.053	-0.003	0.005	0.009	0.000000	0.000000	2157.75	180.19
2	FID	ACIS-S-5	7.24	11547	0.030	-0.013	0.007	0.012	0.000000	0.000000	-1808.30	173.84
3	GUIDE	1059722304	7.49	23094	0.031	-0.096	0.059	0.099	79.157586	-45.913736	-518.34	1792.99
4	GUIDE	1059718384	7.84	23093	-0.171	0.195	0.062	0.099	80.663676	-45.411103	1426.60	-1928.12
5	GUIDE	1059724224	9.24	23091	-0.158	-0.017	0.097	0.159	79.882936	-45.125709	2391.00	81.14
6	GUIDE	1059722088	9.55	23075	0.106	0.025	0.087	0.140	80.609257	-46.439911	-2279.22	-1892.22
7	GUIDE	1059725056	9.58	23011	0.190	-0.113	0.113	0.183	79.204255	-46.412186	-2305.58	1595.45

## 2.4 Star Slots

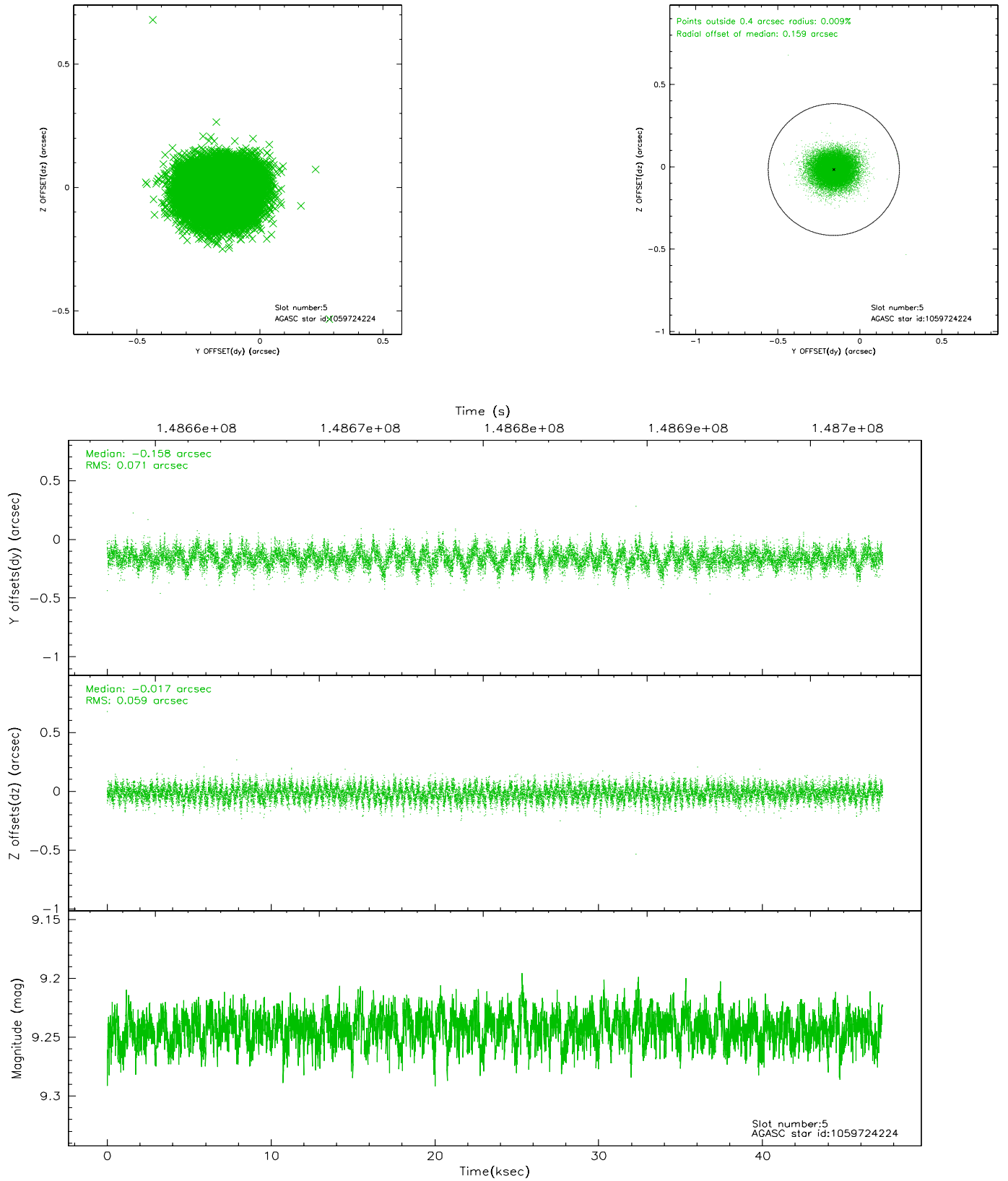
### 2.4.1 Slot 3



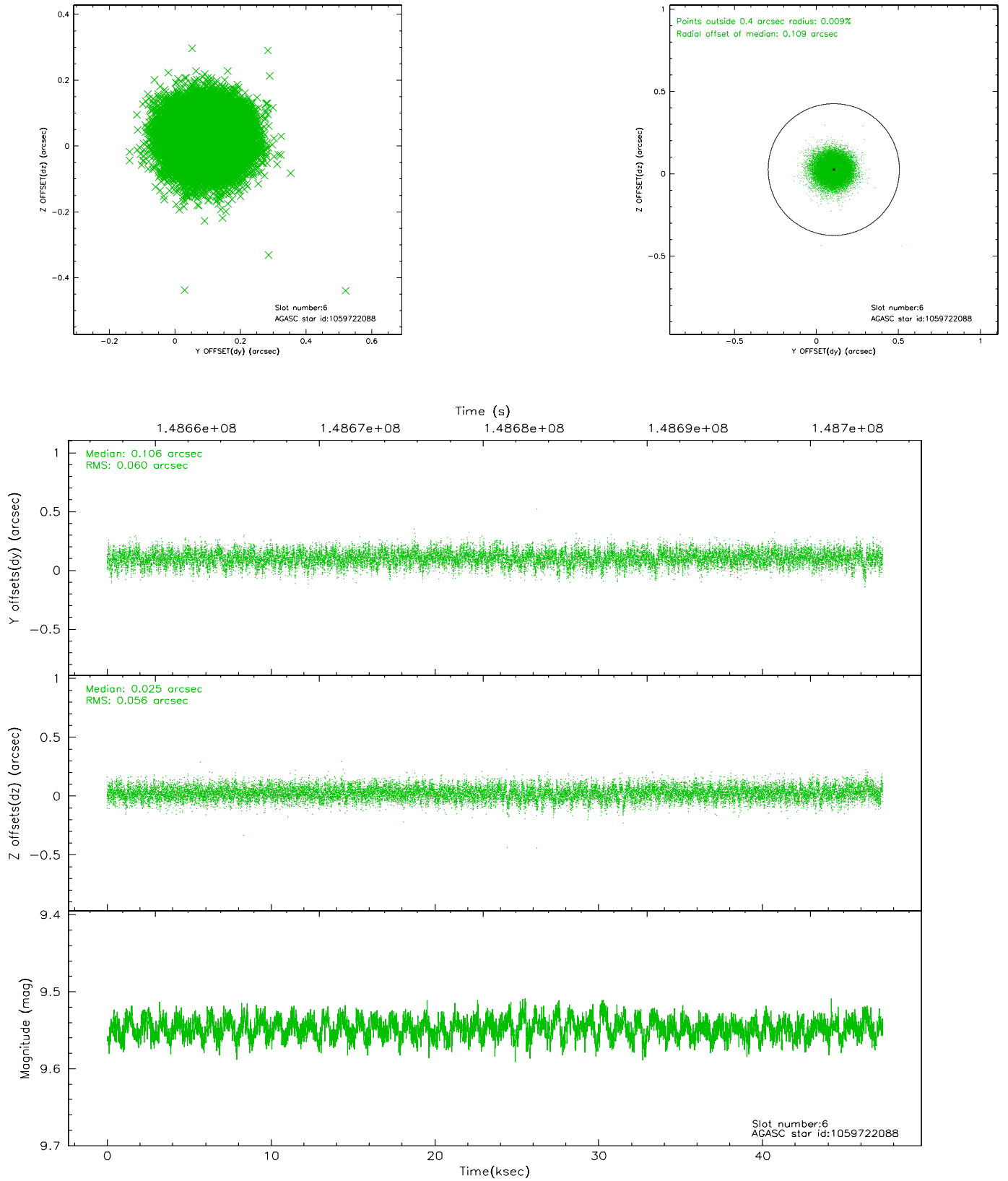
## 2.4.2 Slot 4



### 2.4.3 Slot 5

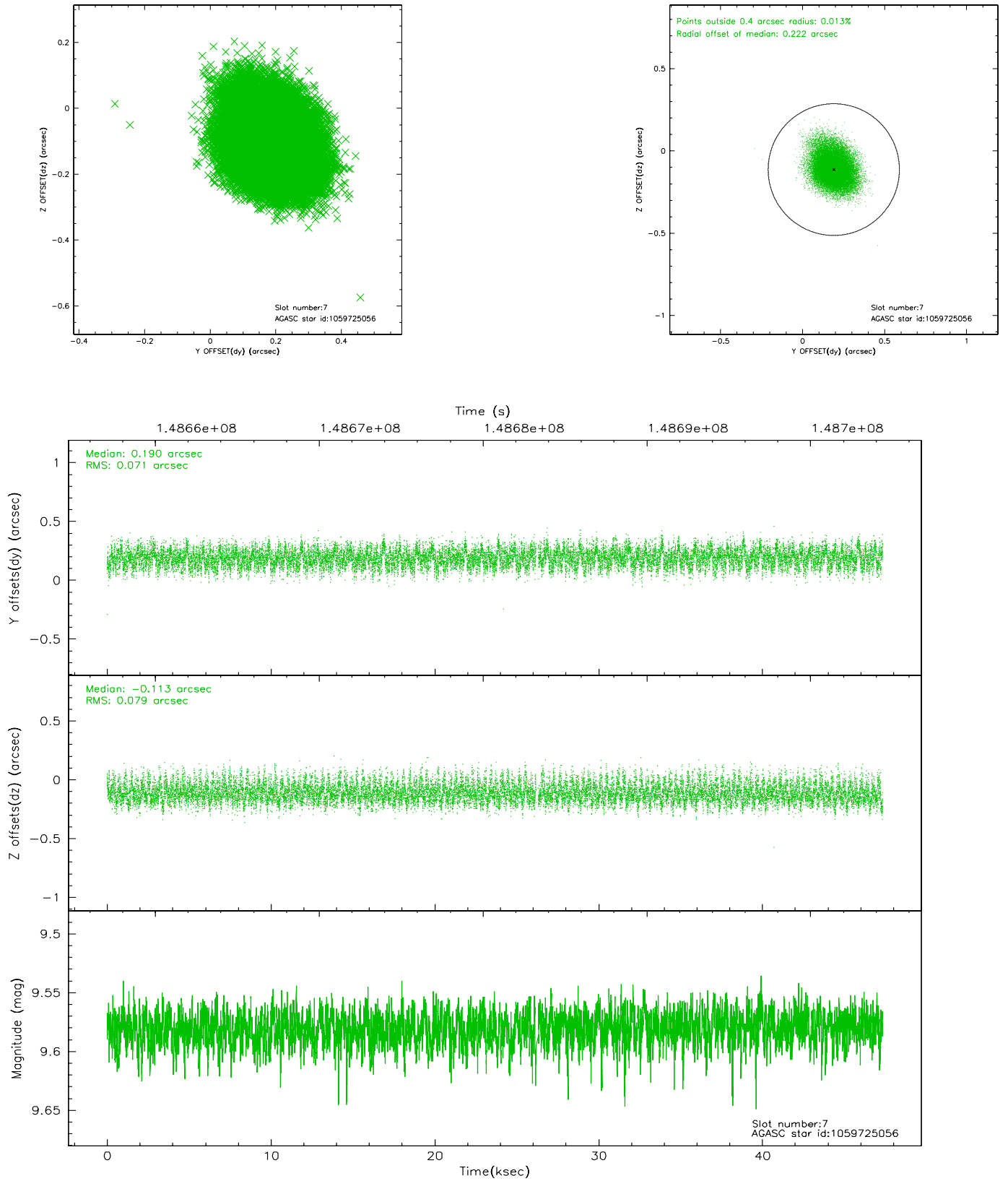


## 2.4.4 Slot 6



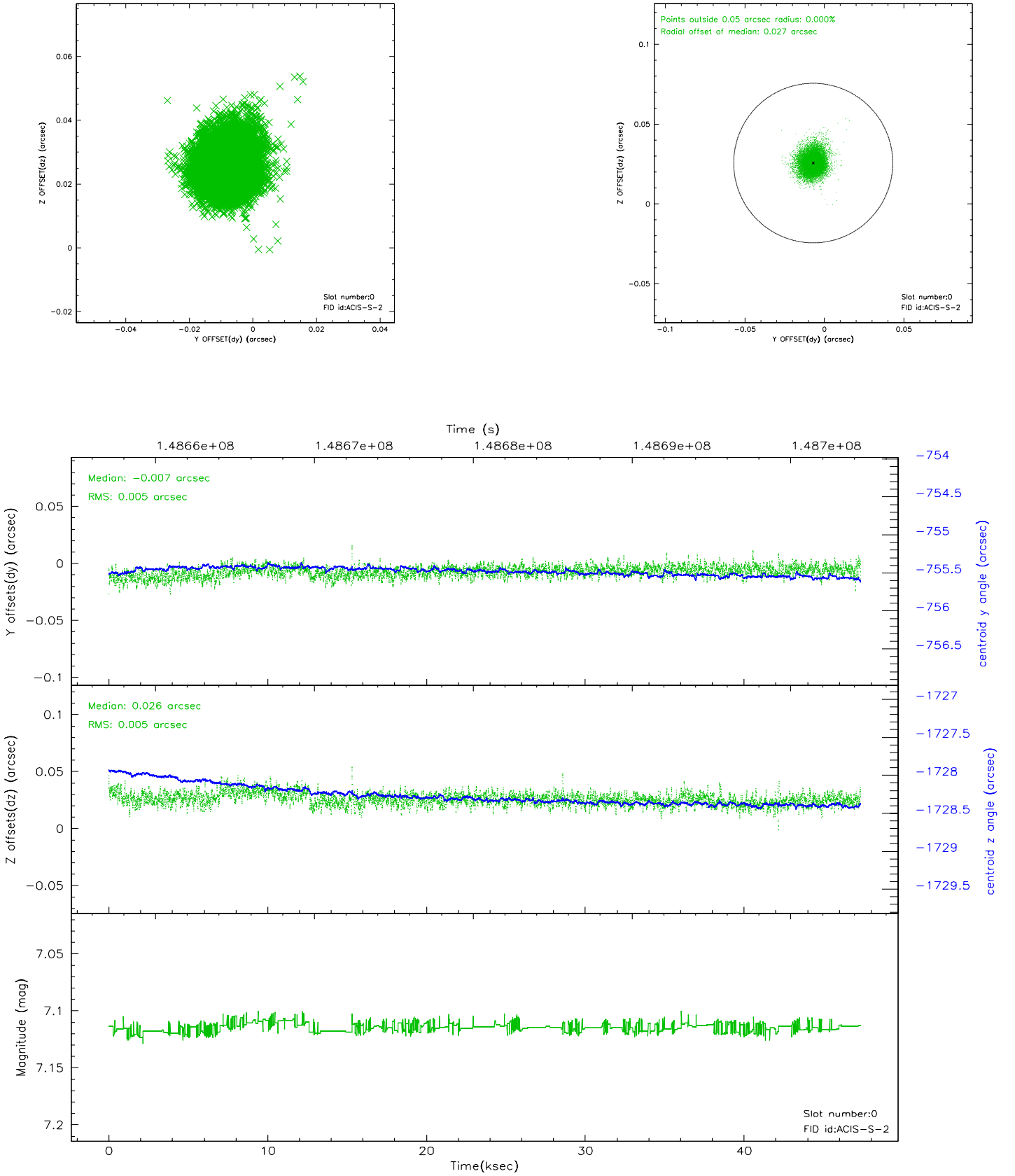


## 2.4.5 Slot 7

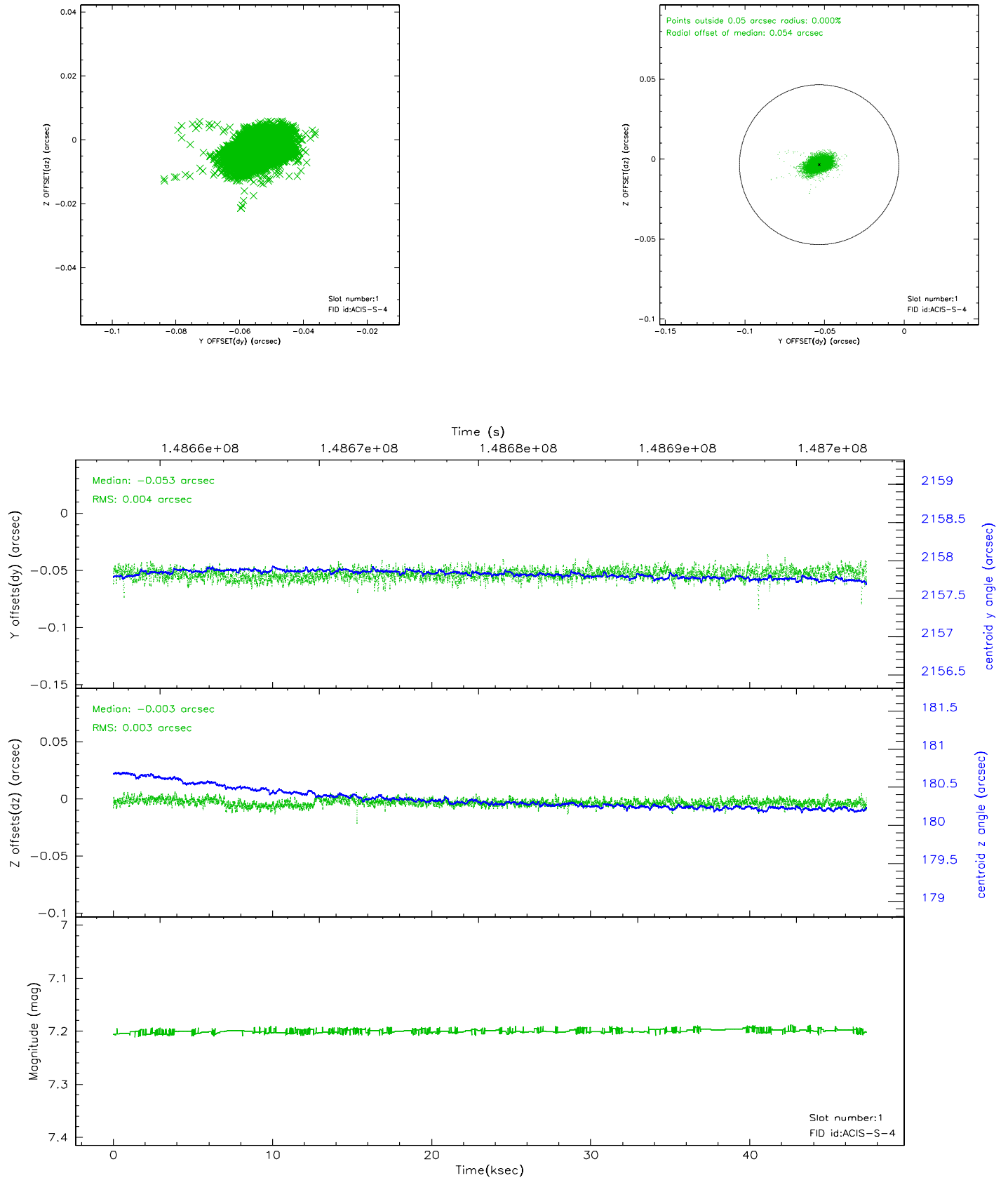


## 2.5 FID Slots

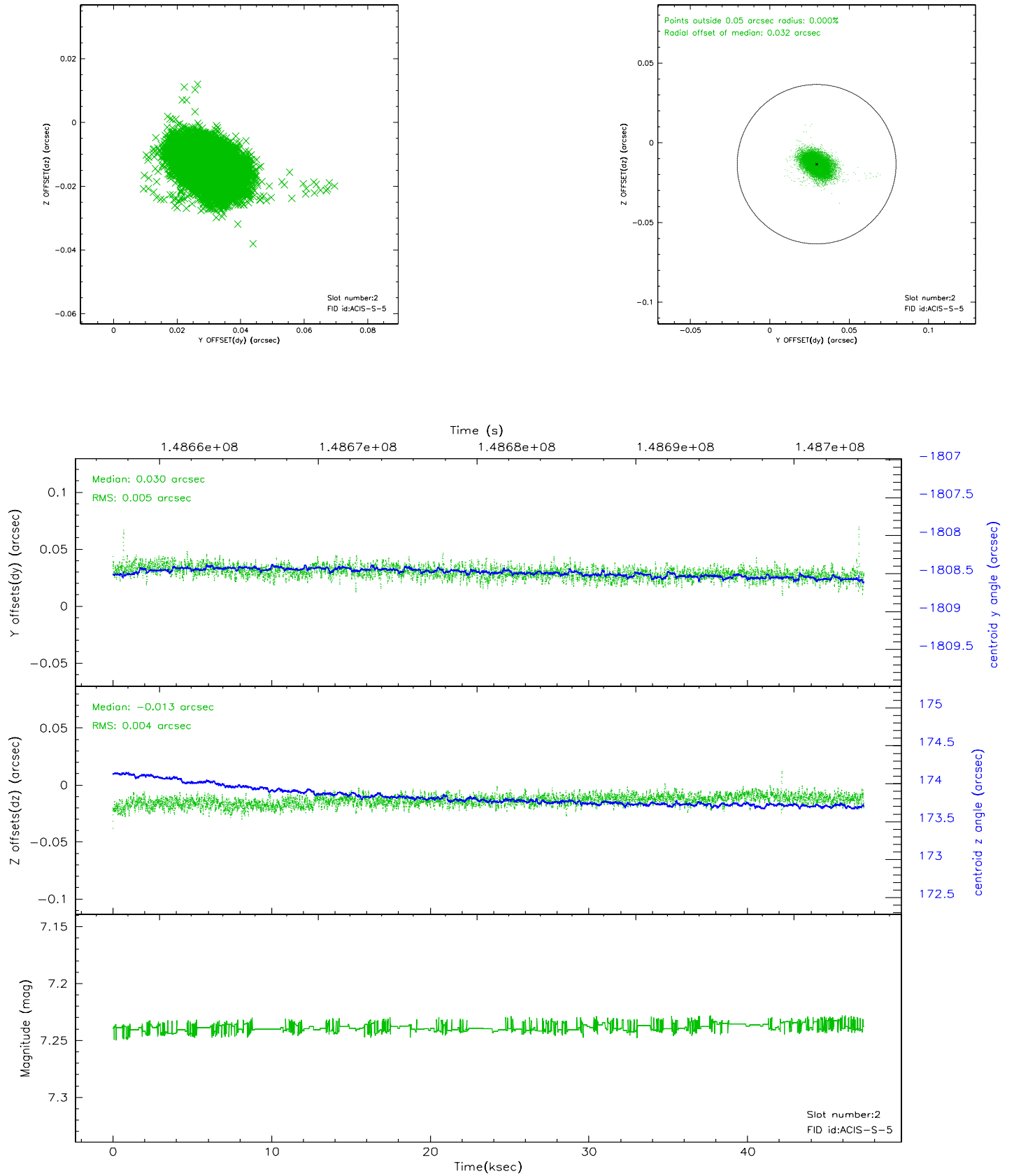
### 2.5.1 Slot 0



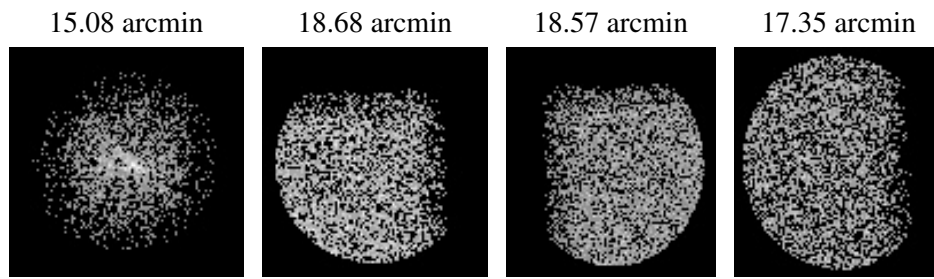
## 2.5.2 Slot 1



### 2.5.3 Slot 2



### 3 Point Sources



## A Summary

### A.1 Status

V&V Scientist	Jen Lauer
V&V Date (YYYY-MM-DD)	2006.10.04
V&V Edition	1
V&V Disposition and Status	OK
V&V Charge Time	46.959

### A.2 Comments