

V&V Reference Report

L2 ASCDS Version : 8.4.5

Observation 3084 - L2 Version 3
Chandra X-Ray Center

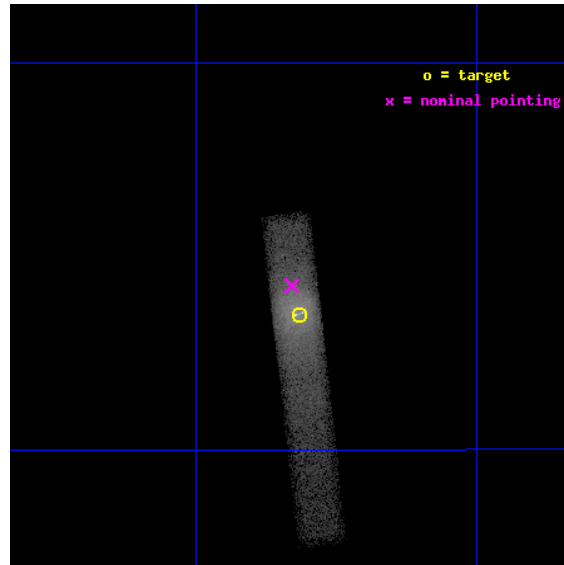
L2 Processing Date : Oct 2 2012

Contents

1	Front	2
2	OBI	3
2.1	OBI	3
2.1.1	Images	3
2.1.2	Bias	3
2.1.3	Parameters	4
2.1.4	Events	4
2.2	Compared Parameters	5
2.3	Aspect	6
2.4	Star Slots	9
2.4.1	Slot 3	9
2.4.2	Slot 4	10
2.4.3	Slot 5	11
2.4.4	Slot 6	12
2.4.5	Slot 7	13
2.5	FID Slots	14
2.5.1	Slot 0	14
2.5.2	Slot 1	15
2.5.3	Slot 2	16
A	Summary	17
A.1	Status	17
A.2	Comments	17

1 Front

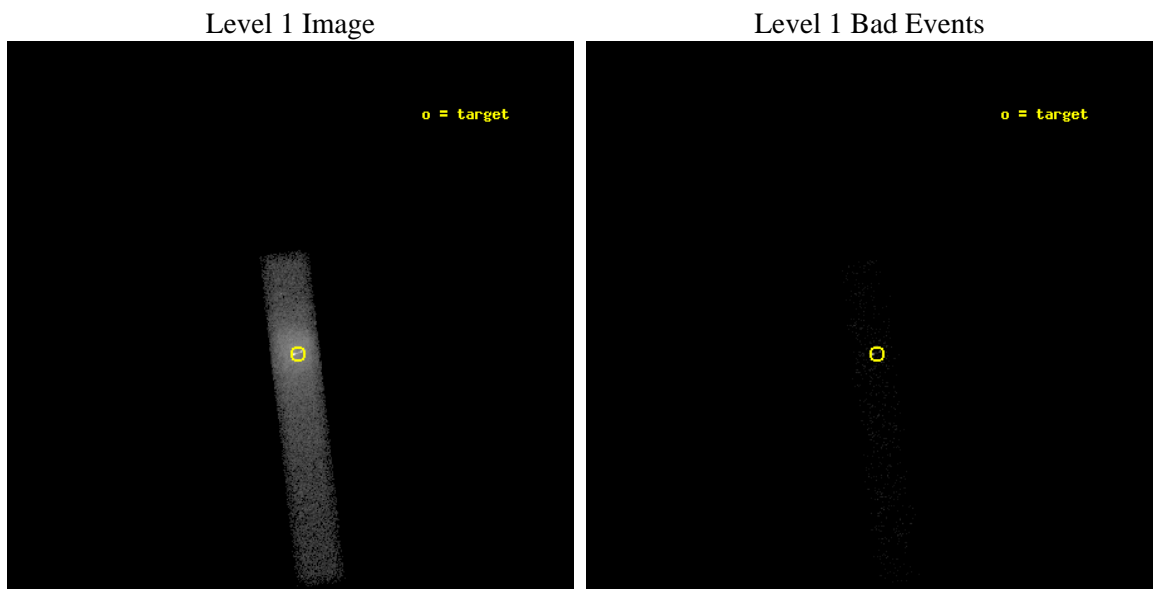
seq_num	700523	Sequence number
obs_id	3084	Observation id
title	X-RAY VARIABILITY IN THE JET AND CORE OF M87	Proposal title
observer	Dr. Daniel Harris	Principal investigator
object	M87	Source name
dtcycle	0	
cycle	P	events from which exps? Prim/Second/Both
ra_targ	187.704167	Observer's specified target RA [deg]
dec_targ	12.391667	Observer's specified target Dec [deg]
ra_nom	187.70740949116	Nominal RA [deg]
dec_nom	12.403807752868	Nominal Dec [deg]
roll_nom	83.389090095813	Nominal Roll [deg]
revision	3	Processing version of data
ontime	5132.4000764787	Sum of GTIs [s]
livetime	4654.8159590774	Livetime [s]
ontime7	5132.4000764787	Sum of GTIs [s]
l2events	59275	Number of level 2 events



2 OBI

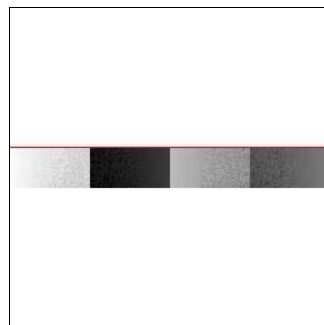
2.1 OBI

2.1.1 Images



2.1.2 Bias

Chip 7



2.1.3 Parameters

obi_num	2	Obi number	sched_exp_time	5000.000000	[s] Scheduled observation exposure time
ascdsver	8.4.5	Processing system revision	ontime	5132.4000764787	Sum of GTIs [s]
caldsver	4.5.2	 	ontime7	5132.4000764787	Sum of GTIs [s]
date	2012-10-02T07:24:32	Date and time of file creation	l1events	66981	Number of level 1 events
revision	3	Processing version of data			

2.1.4 Events

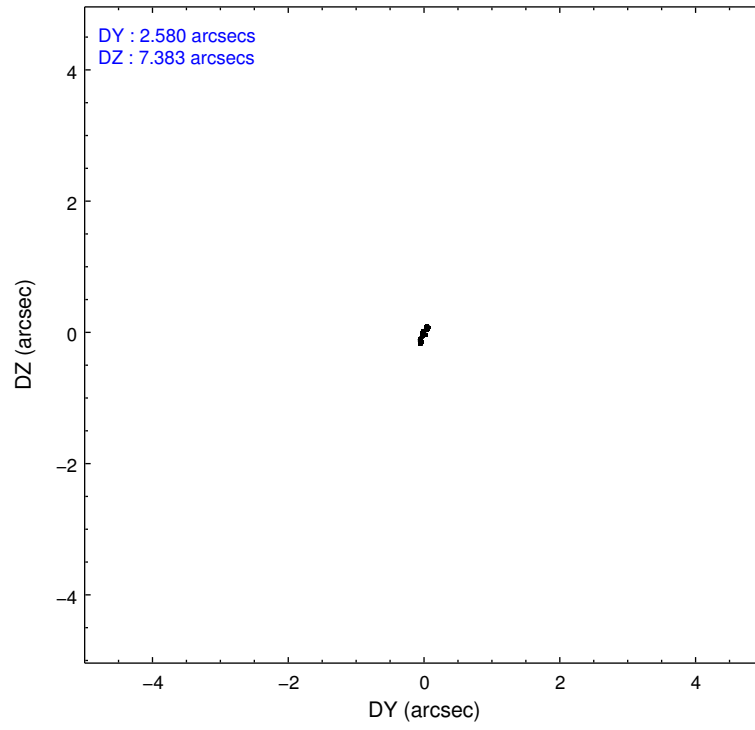
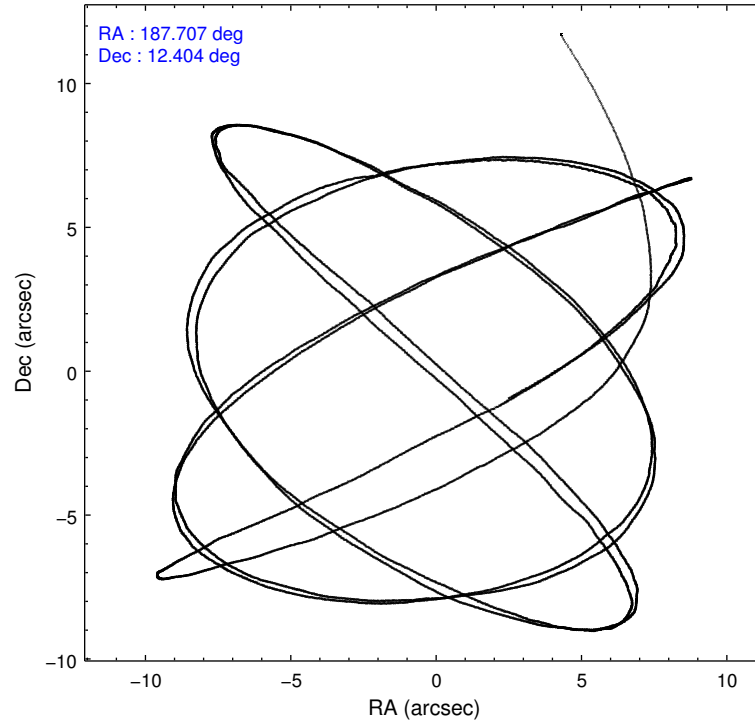
	ccd 7
level 1 events	66981
rejected events	7039
rejected %	10%

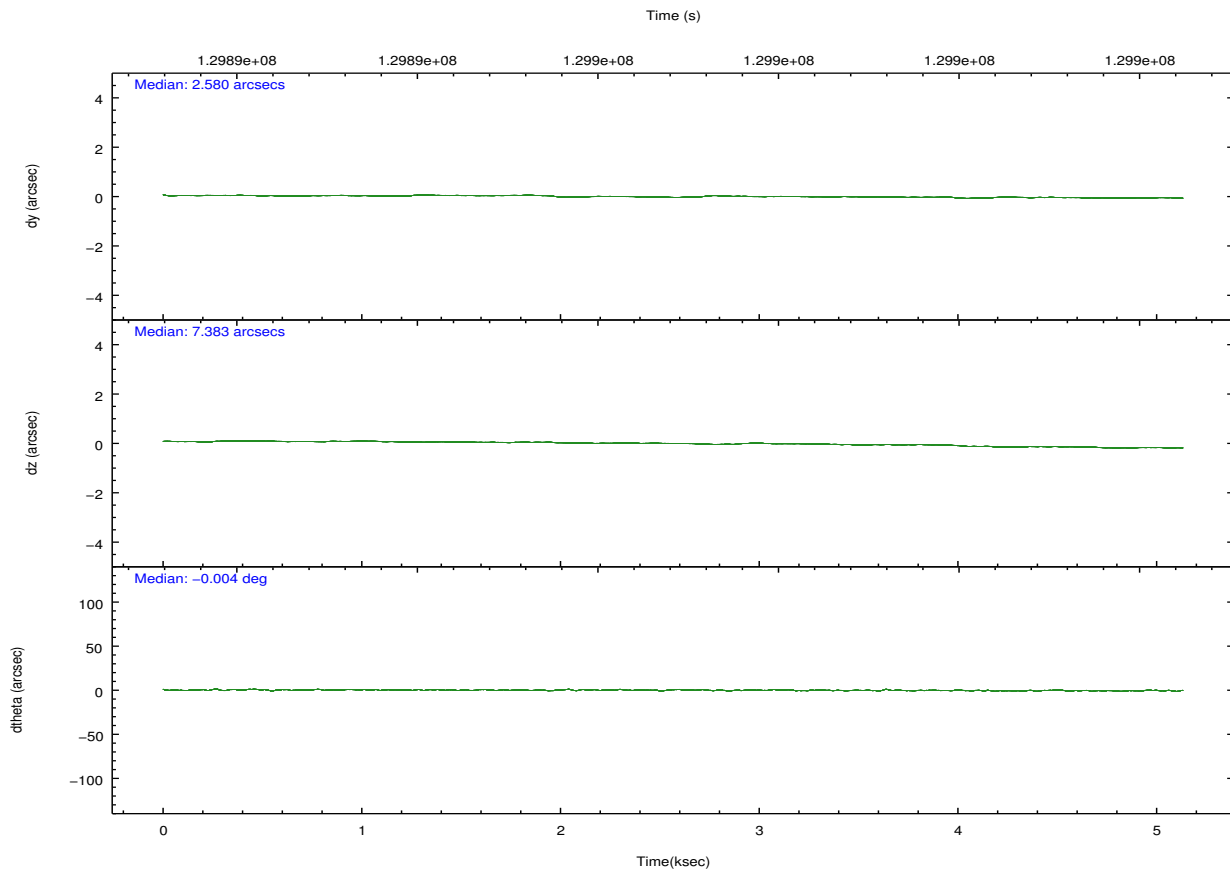
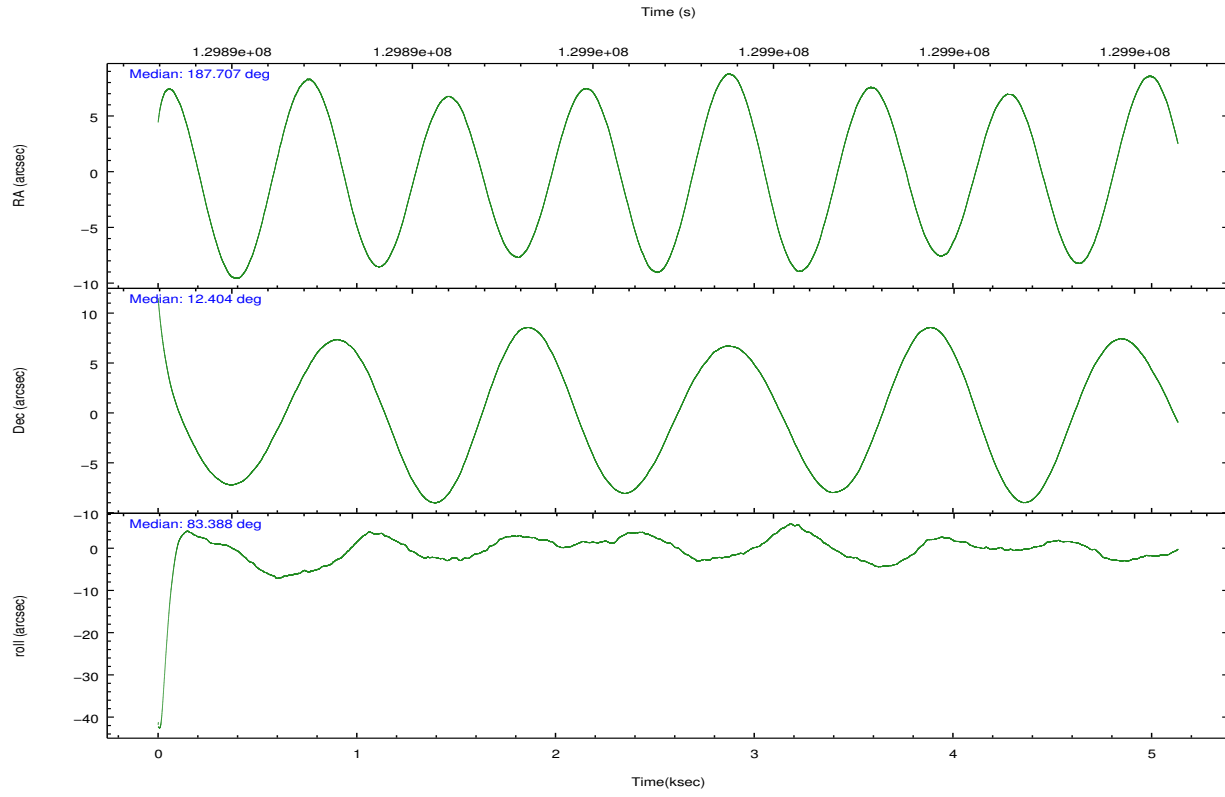
	ccd 7
grade 0 events	20401
	30%
grade 1 events	82
	0%
grade 2 events	15966
	23%
grade 3 events	7424
	11%
grade 4 events	7272
	10%
grade 5 events	1161
	1%
grade 6 events	11277
	16%
grade 7 events	3398
	5%

2.2 Compared Parameters

Parameter	Planned	Actual	Parameter	Planned	Actual
Instrument	ACIS	ACIS	Obspar format version number	7	7
Detector	ACIS-7	ACIS-7	Obspar file type	PREDICTED	ACTUAL
Grating	NONE	NONE	Obspar update status	NONE	UPDATED
Data mode	FAINT	FAINT	Number of optional ACIS chips dropped	0	0
Observation mode	POINTING	POINTING	On-chip summing requested	N	N
[deg] Pointing RA	187.718771	187.7074094911576	Subarray requested	CUSTOM	1/8
[deg] Pointing Dec	12.378892	12.40380775286803	Subarray start row	449	449
[deg] Pointing Roll	83.230137	83.38909009581292	Subarray row count	128	128
[mm] SIM focus pos	-0.684267	-0.6828225247311905	Alternating exposures requested	N	N
[mm] SIM defocus	0	0.001444936568705701	[s] Primary exposure time	0.000000	0.4
[mm] SIM translation stage pos	-190.132523	-190.1400660498719			
[mm] SIM translation stage offset	0	0.00754346686406393			
[s] Observation start time (MET)	129892981.184000	129891798.18427			
Observation start date	2002-02-12T09:21:57	2002-02-12T09:03:18			
[s] Observation end time (MET)	129897981.184000	129898790.73455			
Observation end date	2002-02-12T10:45:17	2002-02-12T10:59:50			
Read mode	TIMED	TIMED			

2.3 Aspect



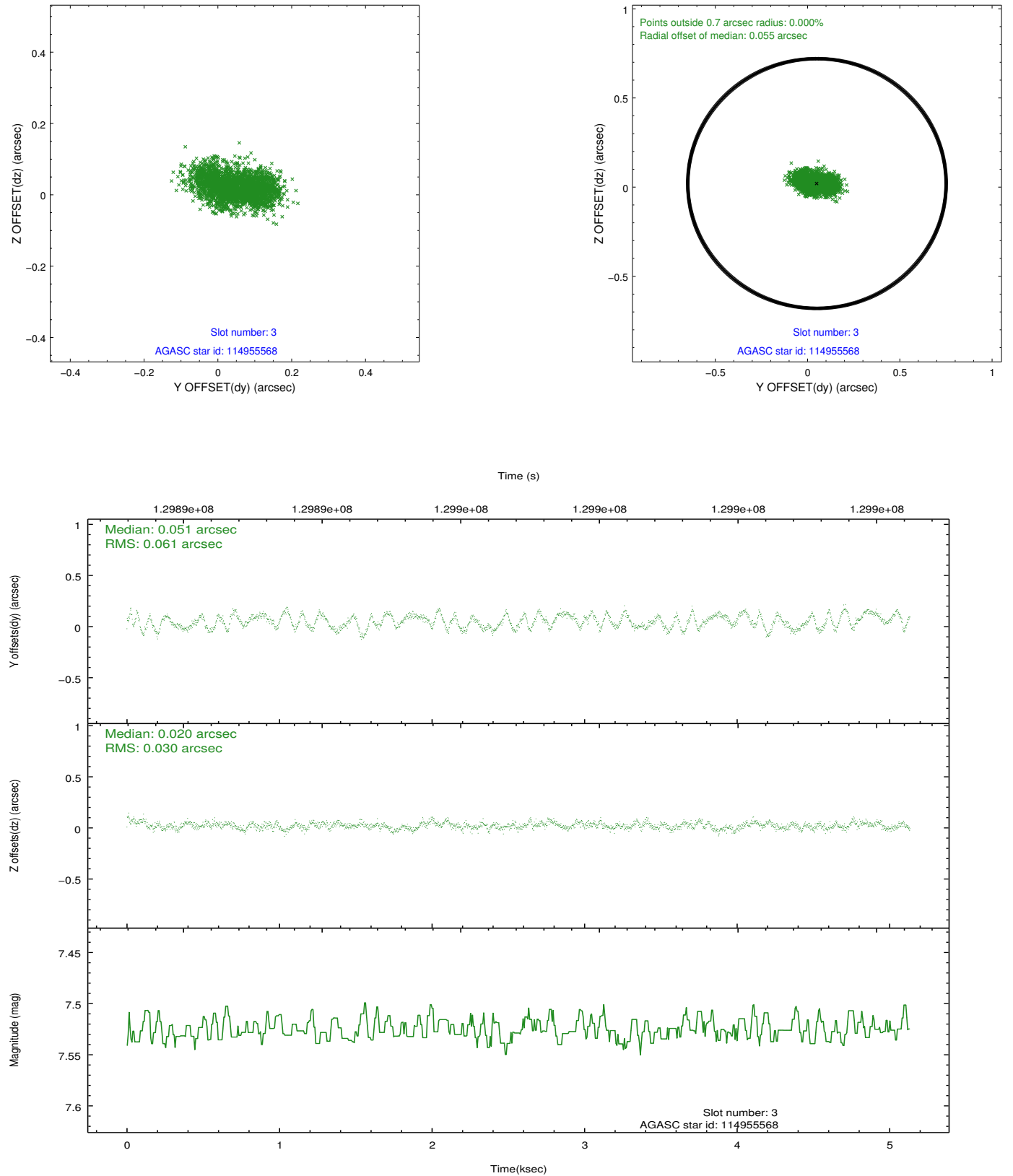


Slot Statistics

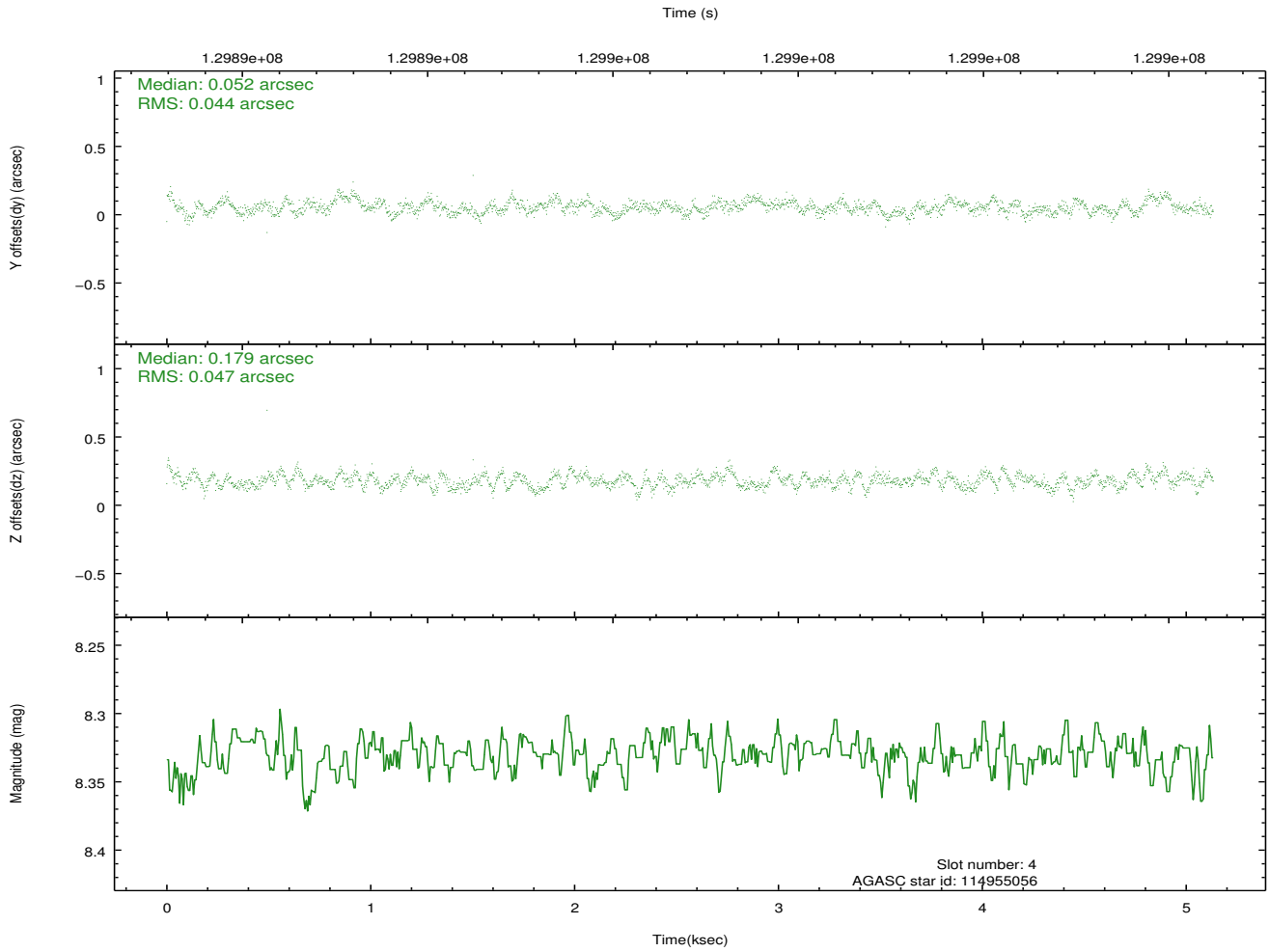
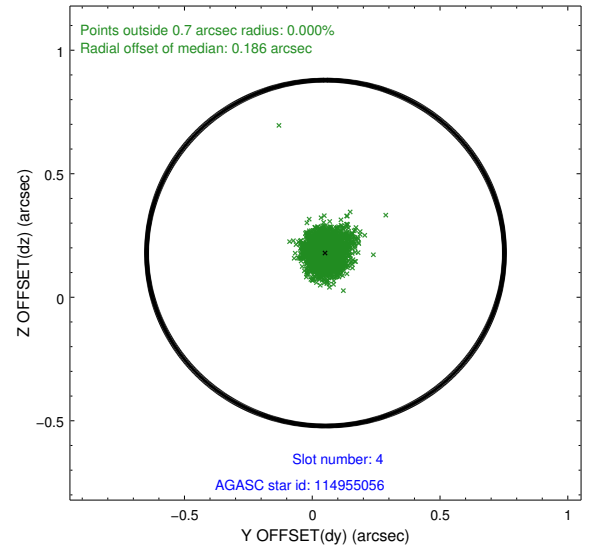
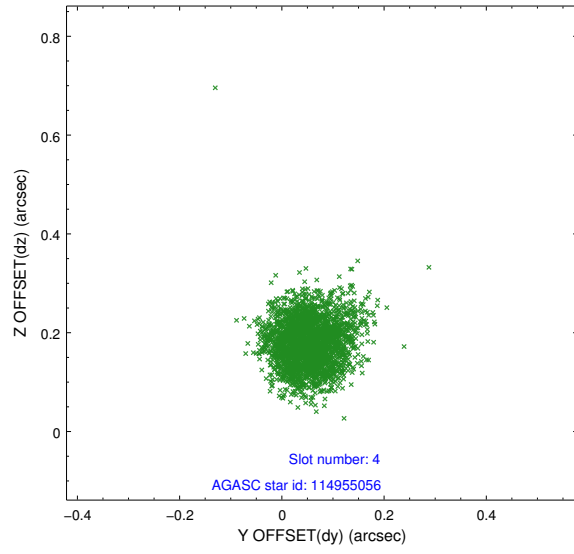
slot	status	id	mag	n_pts	med_dy	med_dz	dr1	dr2	ra	dec	mean_y	mean_z
0	FID	ACIS-S-2	7.11	1252	-0.007	0.010	0.007	0.012	0.000000	0.000000	-755.22	-1728.53
1	FID	ACIS-S-4	7.20	1252	-0.059	0.001	0.005	0.010	0.000000	0.000000	2157.47	178.72
2	FID	ACIS-S-5	7.23	1250	0.034	-0.002	0.007	0.012	0.000000	0.000000	-1806.49	173.74
3	GUIDE	114955568	7.53	2505	0.051	0.020	0.074	0.114	187.061916	11.826551	-2244.85	2064.14
4	GUIDE	114955056	8.33	2504	0.052	0.179	0.067	0.108	187.914001	12.127854	-817.16	-788.09
5	GUIDE	114952824	8.55	2502	-0.072	-0.050	0.066	0.104	187.703904	12.486727	378.78	97.13
6	GUIDE	115348424	9.52	2505	-0.031	0.051	0.116	0.191	187.199498	13.087929	2321.82	2109.29
7	GUIDE	114952792	9.52	2504	-0.004	-0.198	0.096	0.156	187.070263	12.344747	-387.58	2251.16

2.4 Star Slots

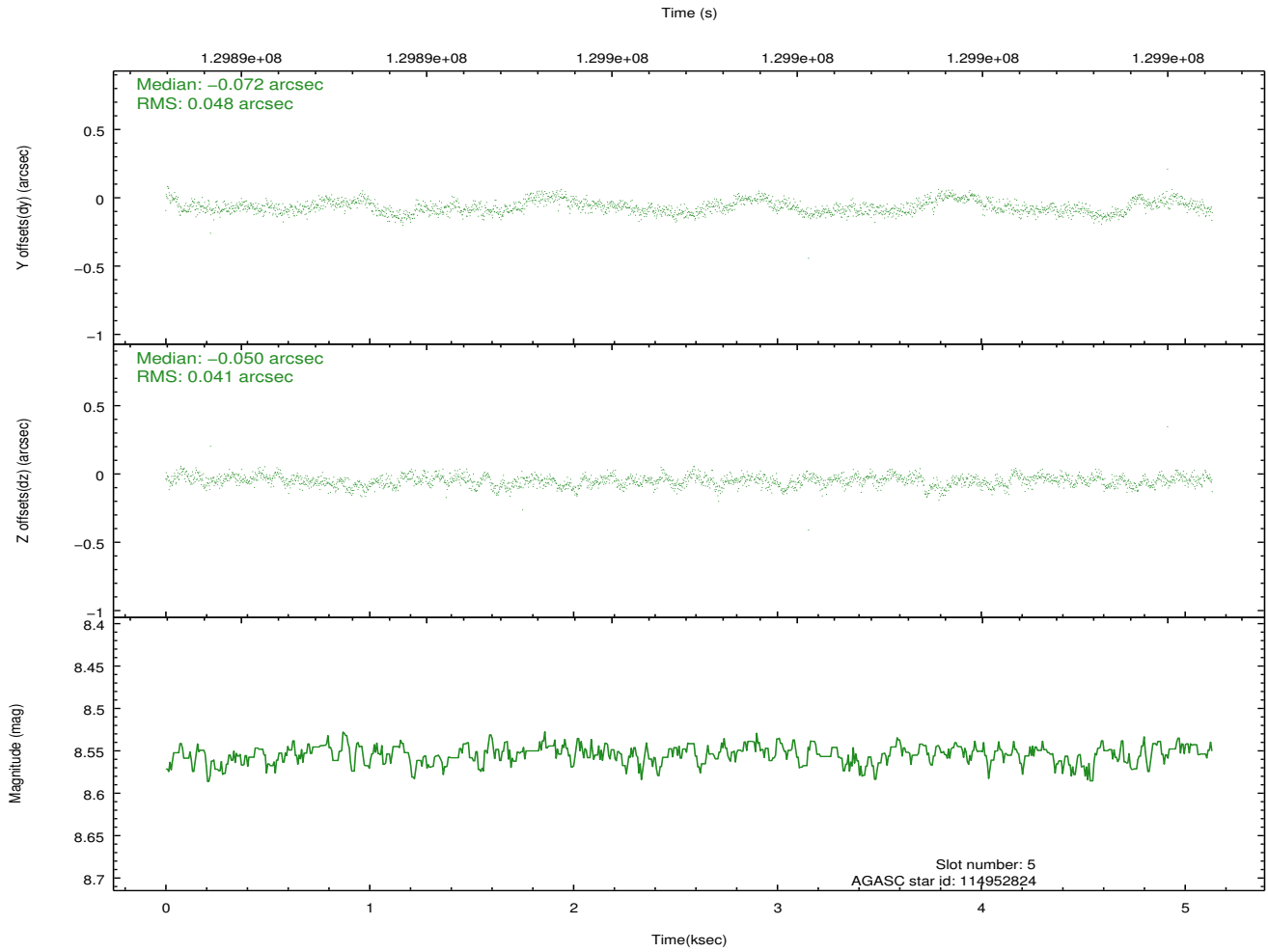
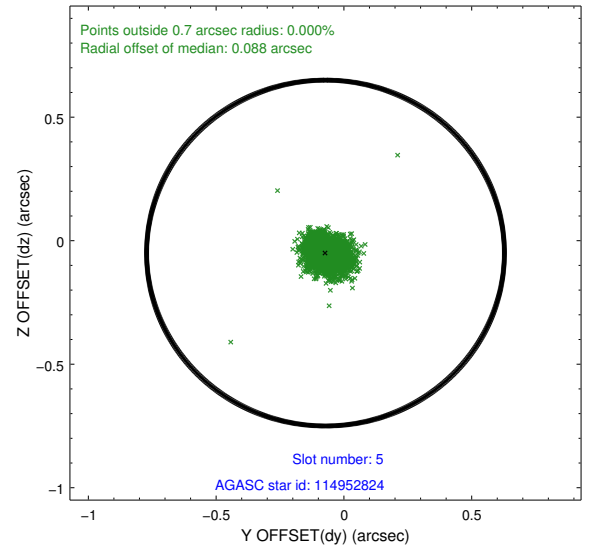
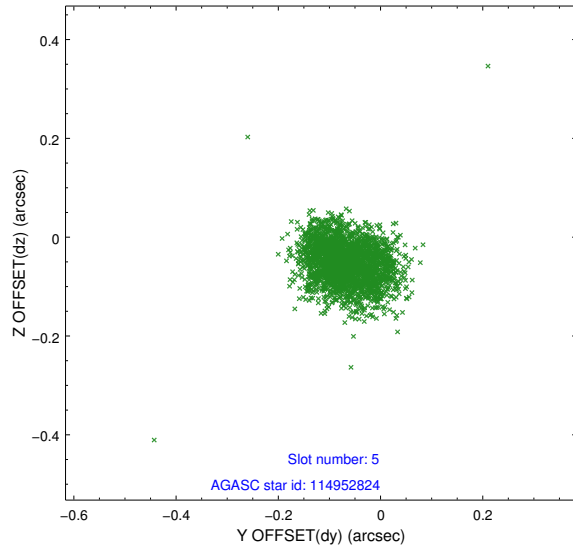
2.4.1 Slot 3



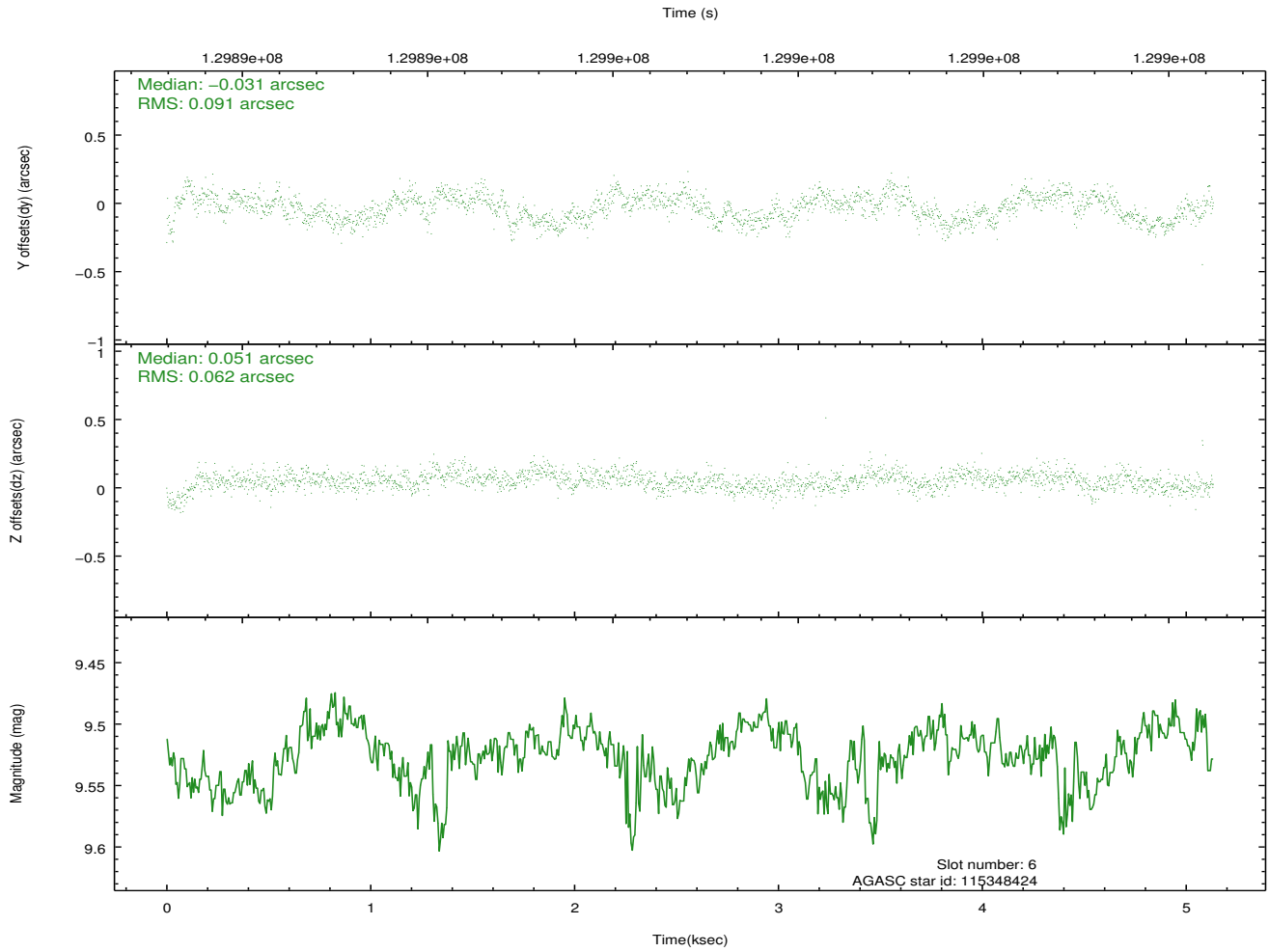
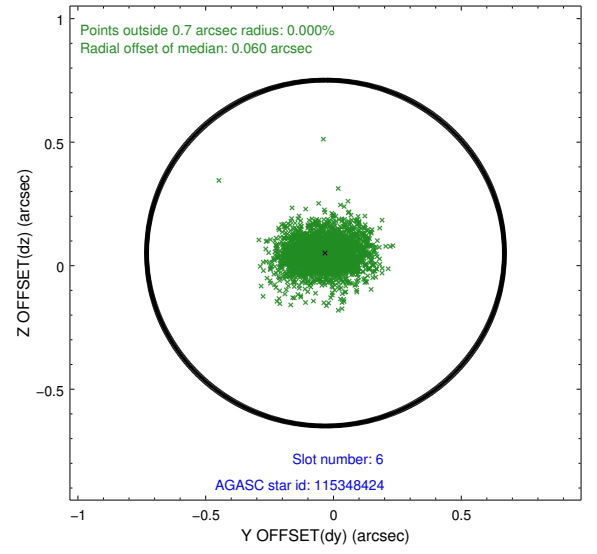
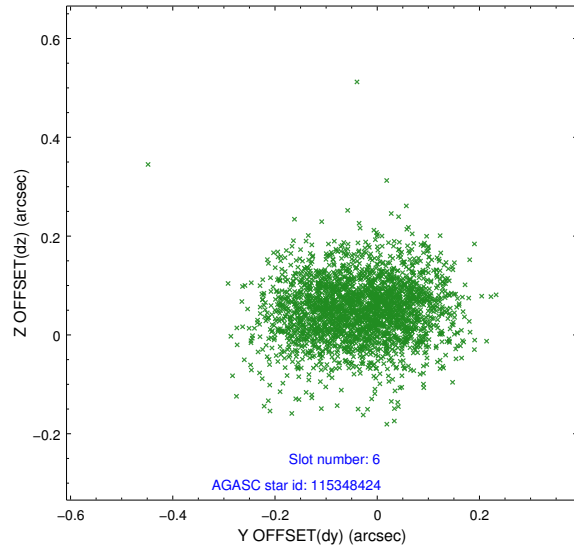
2.4.2 Slot 4



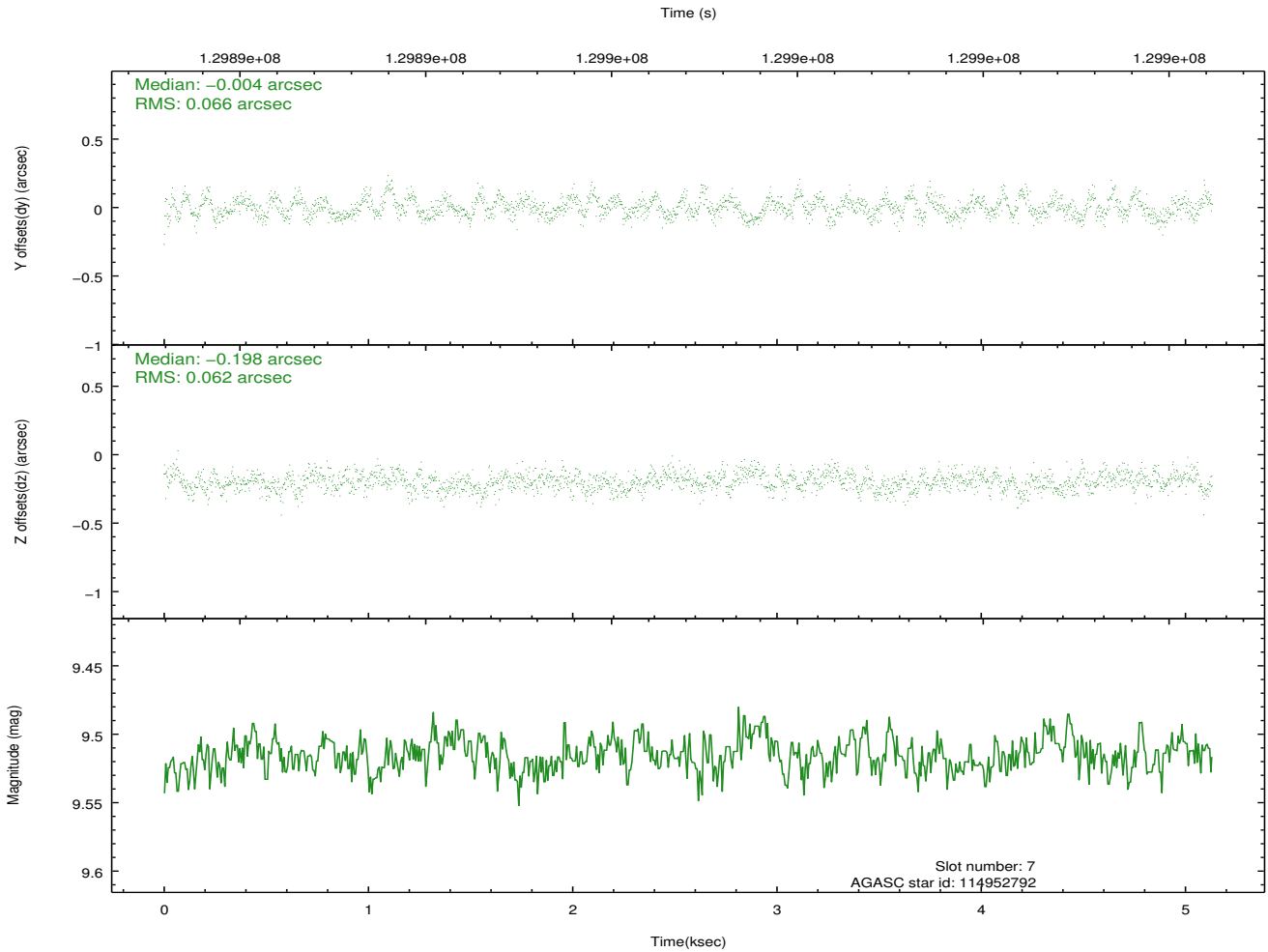
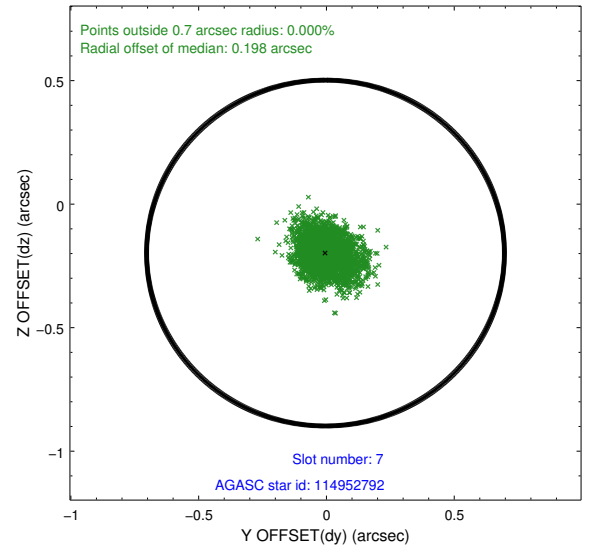
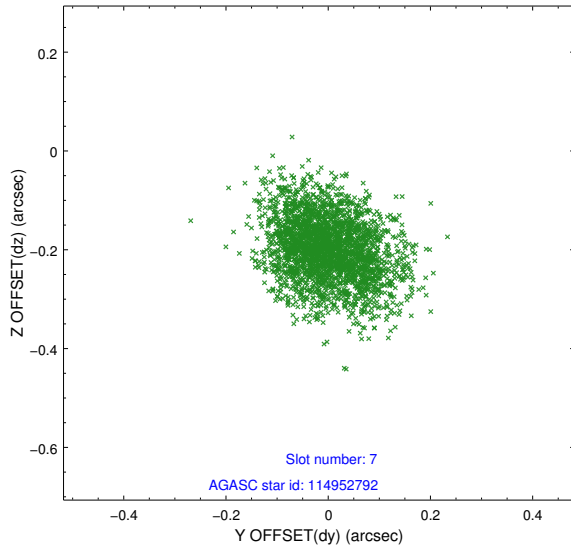
2.4.3 Slot 5



2.4.4 Slot 6

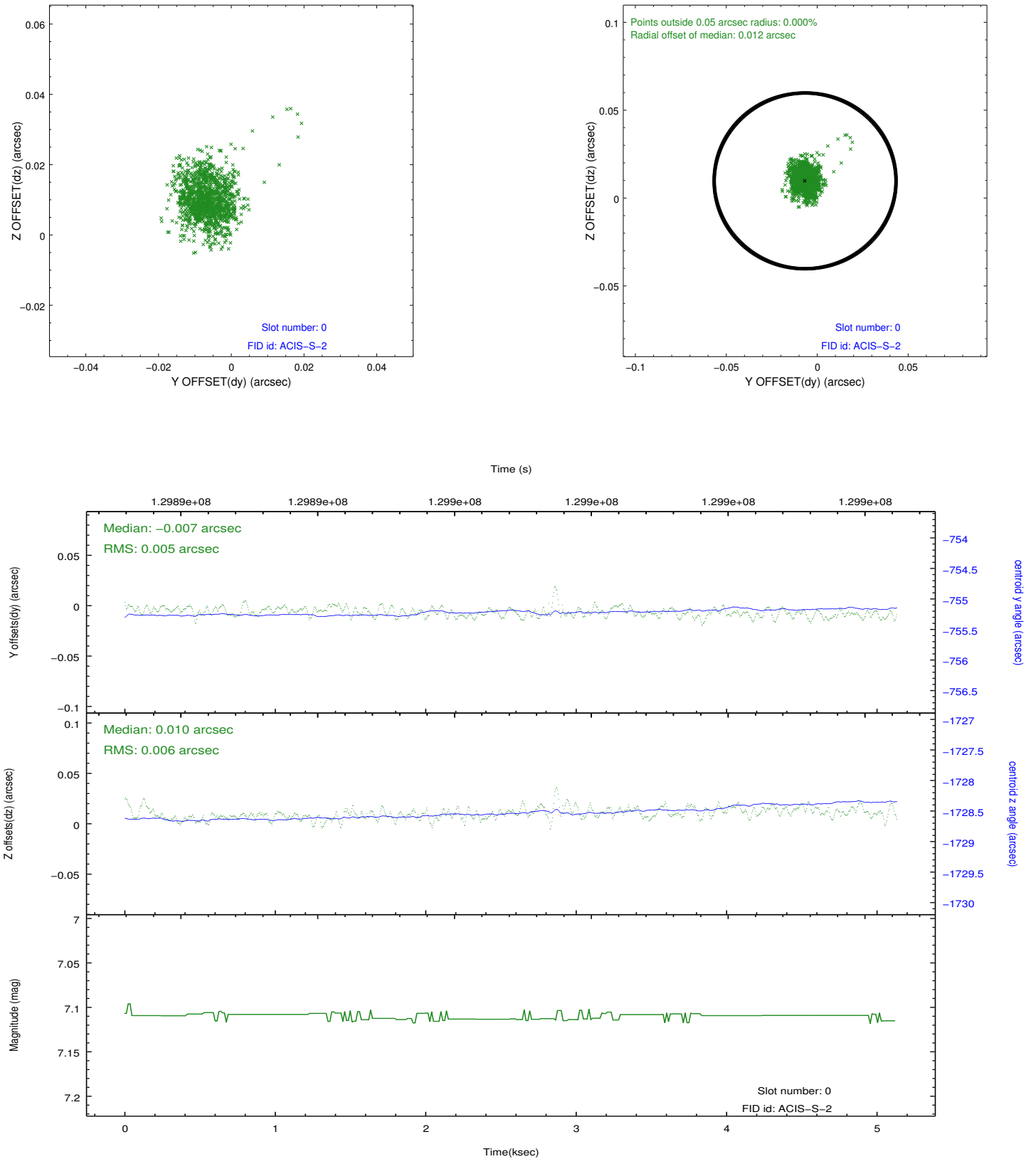


2.4.5 Slot 7

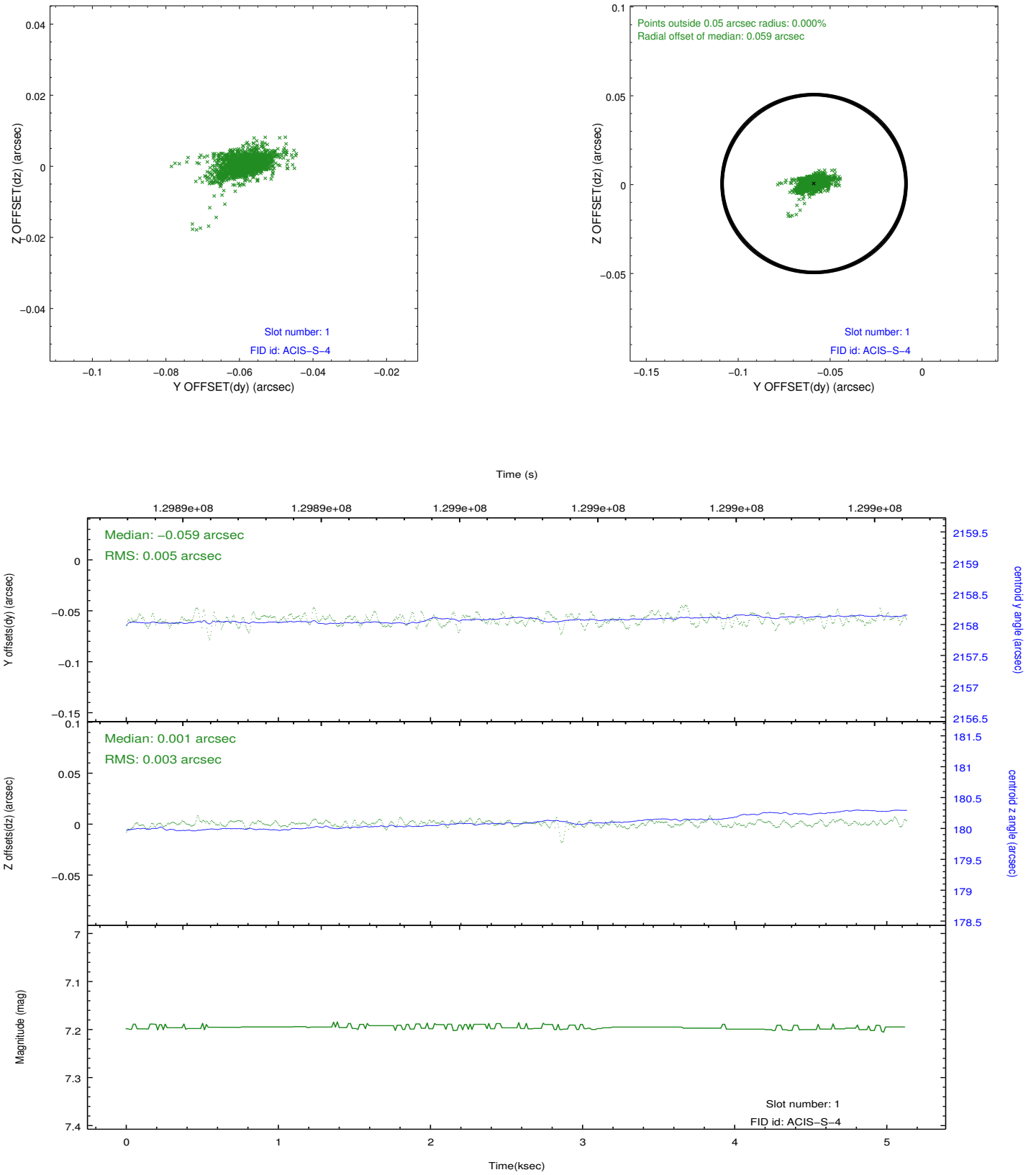


2.5 FID Slots

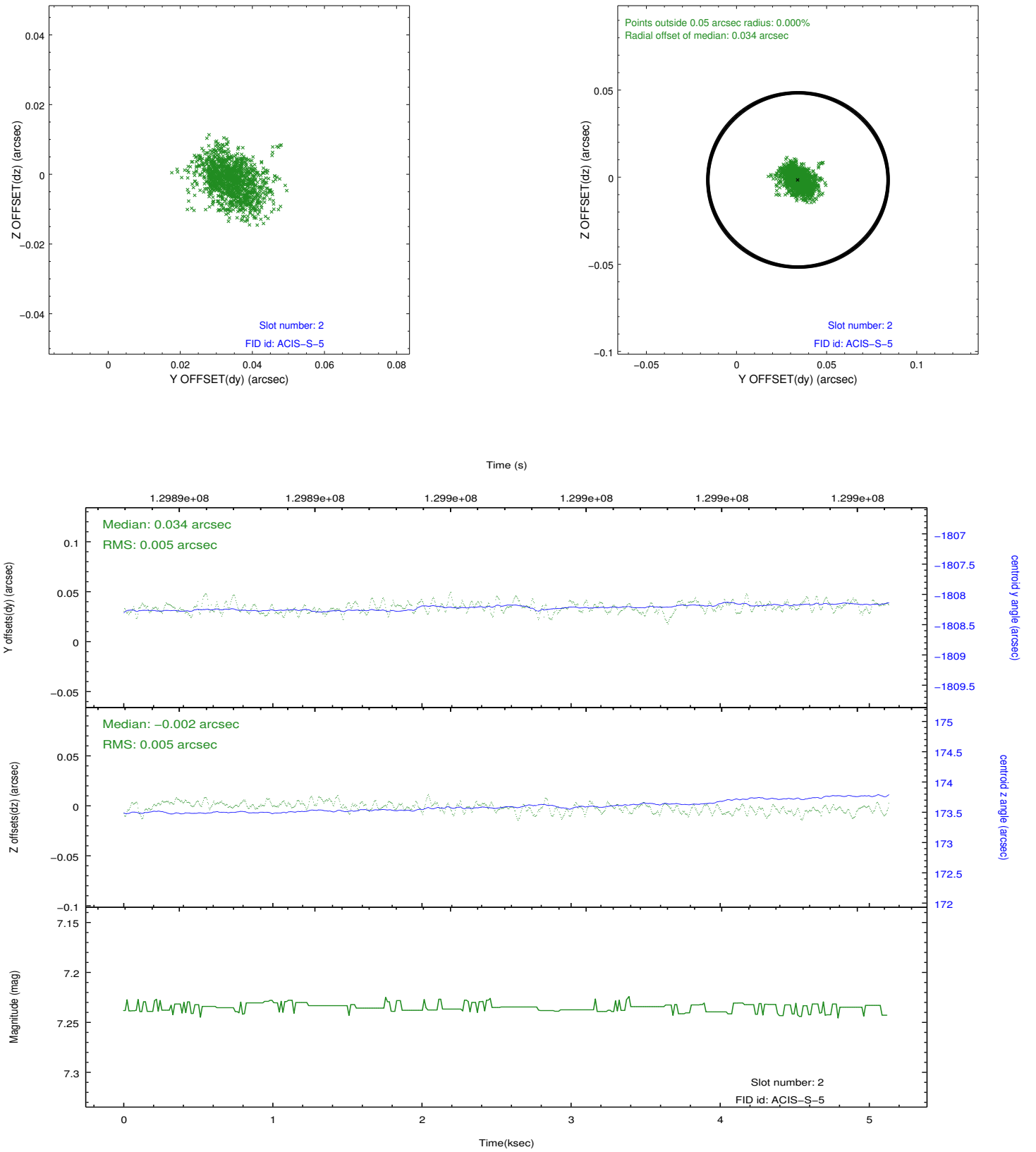
2.5.1 Slot 0



2.5.2 Slot 1



2.5.3 Slot 2



A Summary

A.1 Status

V&V Scientist	Jen Lauer
V&V Date (YYYY-MM-DD)	2012.10.03
V&V Edition	1
V&V Disposition and Status	OK
V&V Charge Time	5.132

A.2 Comments