

V&V Reference Report

L2 ASCDS Version : 8.4.5

Observation 3080 - L2 Version 3
Chandra X-Ray Center

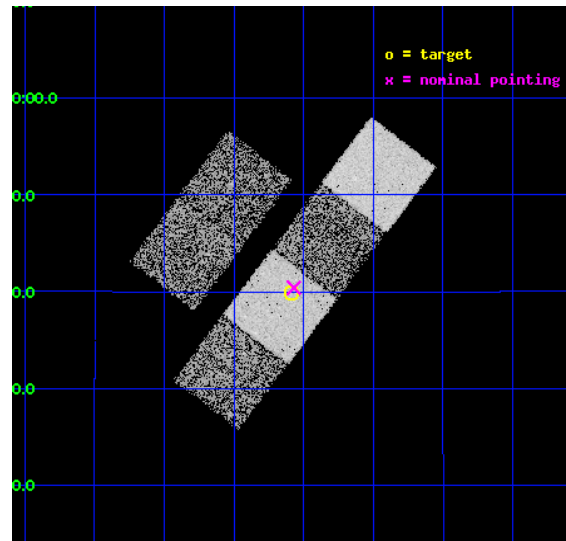
L2 Processing Date : Oct 10 2012

Contents

1	Front	2
2	OBI	3
2.1	OBI	3
2.1.1	Images	3
2.1.2	Bias	3
2.1.3	Parameters	4
2.1.4	Events	4
2.2	Compared Parameters	5
2.3	Aspect	6
2.4	Star Slots	9
2.4.1	Slot 3	9
2.4.2	Slot 4	10
2.4.3	Slot 5	11
2.4.4	Slot 6	12
2.4.5	Slot 7	13
2.5	FID Slots	14
2.5.1	Slot 0	14
2.5.2	Slot 1	15
2.5.3	Slot 2	16
A	Summary	17
A.1	Status	17
A.2	Comments	17

1 Front

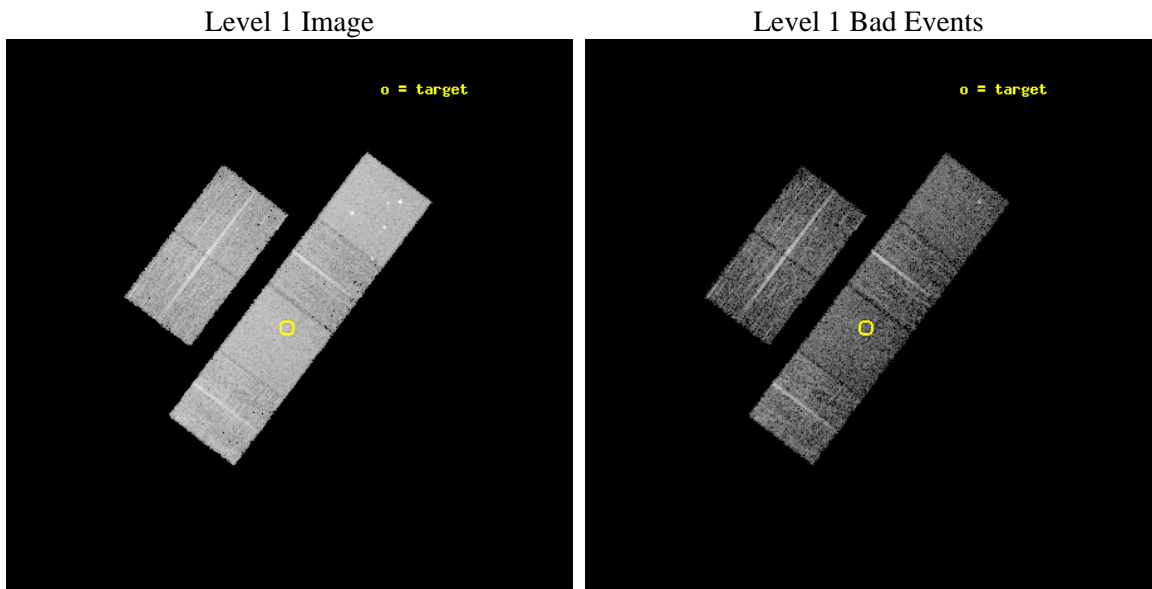
seq_num	700519	Sequence number
obs_id	3080	Observation id
title	X-RAY WEAK BROAD-LINE QUASARS: ABSORPTION OR INTRINSIC X_RAY WEAKNESS ?	Proposal title
observer	Dr Guido Risaliti	Principal investigator
object	HS 2135+1326	Source name
dtcycle	0	
cycle	P	events from which exps? Prim/Second/Both
ra_targ	324.522083	Observer's specified target RA [deg]
dec_targ	13.664861	Observer's specified target Dec [deg]
ra_nom	324.51752536905	Nominal RA [deg]
dec_nom	13.673442649425	Nominal Dec [deg]
roll_nom	127.19210029175	Nominal Roll [deg]
revision	3	Processing version of data
ontime	5983.9999777079	Sum of GTIs [s]
livetime	5908.2269668579	Livetime [s]
ontime2	5983.9999777079	Sum of GTIs [s]
ontime3	5983.9999777079	Sum of GTIs [s]
ontime5	5983.9999777079	Sum of GTIs [s]
ontime6	5983.9999777079	Sum of GTIs [s]
ontime7	5983.9999777079	Sum of GTIs [s]
ontime8	5983.9999777079	Sum of GTIs [s]
l2events	61690	Number of level 2 events



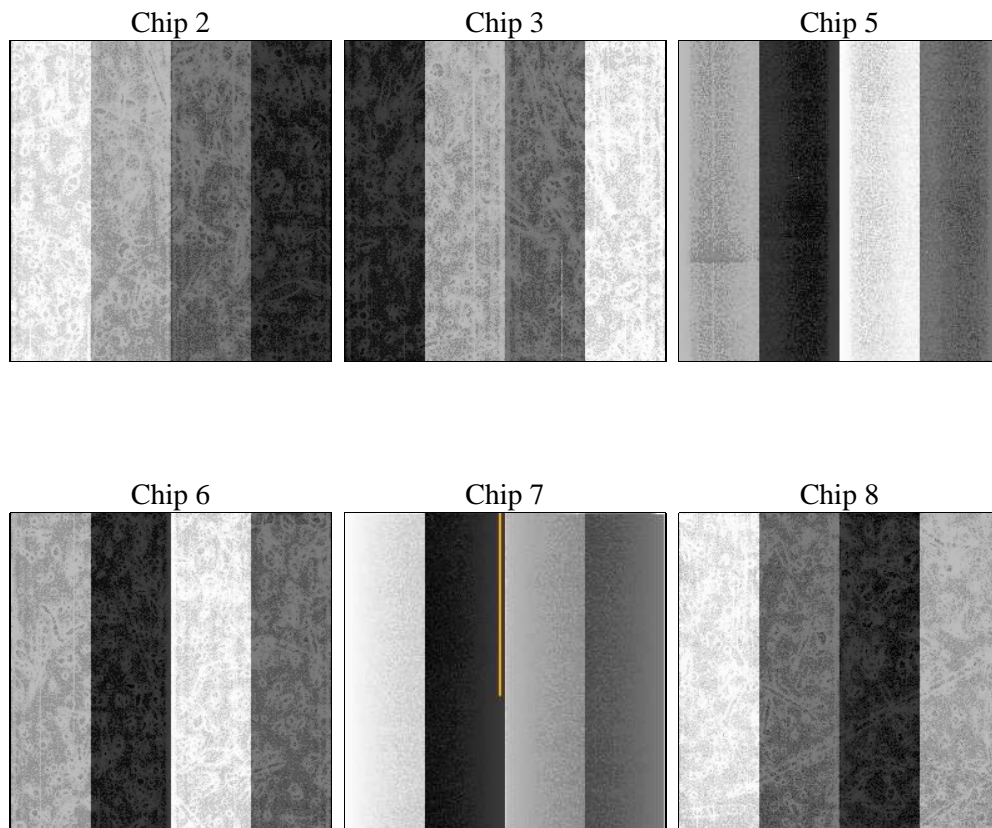
2 OBI

2.1 OBI

2.1.1 Images



2.1.2 Bias



2.1.3 Parameters

obi_num	0	Obi number	sched_exp_time	6000.000000	[s] Scheduled observation exposure time
ascdsver	8.4.5	Processing system revision	ontime	5983.9999777079	Sum of GTIs [s]
caldsver	4.5.2	 	ontime2	5983.9999777079	Sum of GTIs [s]
date	2012-10-10T03:26:39	Date and time of file creation	ontime3	5983.9999777079	Sum of GTIs [s]
revision	3	Processing version of data	ontime5	5983.9999777079	Sum of GTIs [s]
			ontime6	5983.9999777079	Sum of GTIs [s]
			ontime7	5983.9999777079	Sum of GTIs [s]
			ontime8	5983.9999777079	Sum of GTIs [s]
			l1events	277147	Number of level 1 events

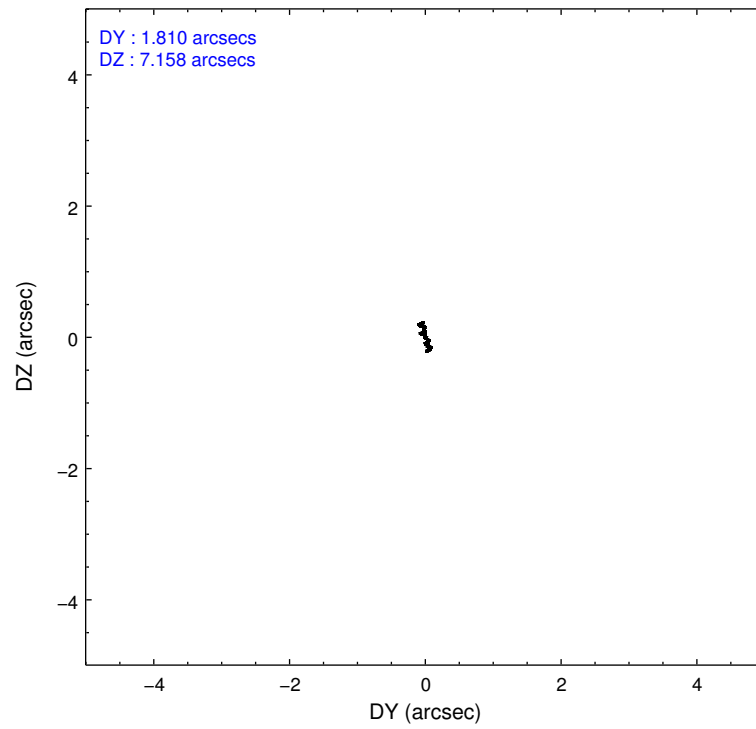
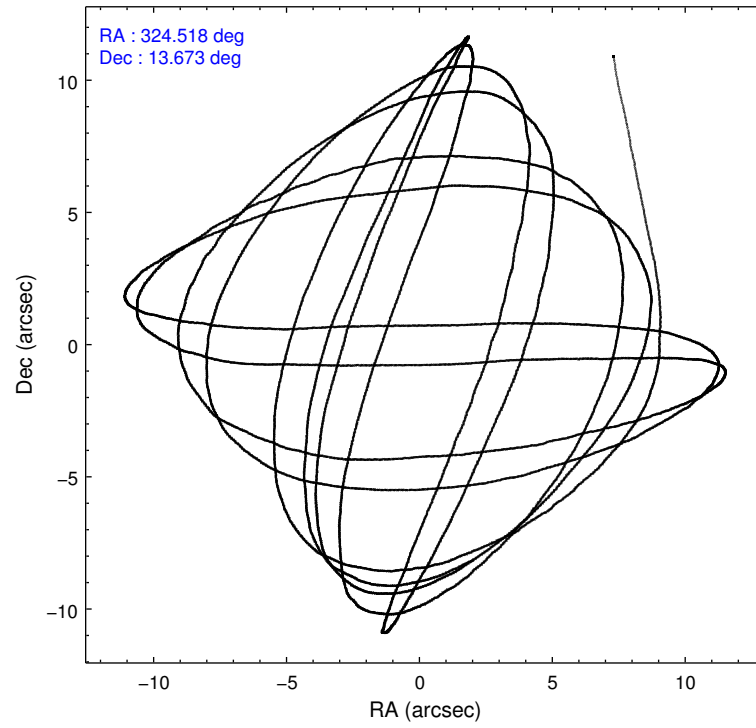
2.1.4 Events

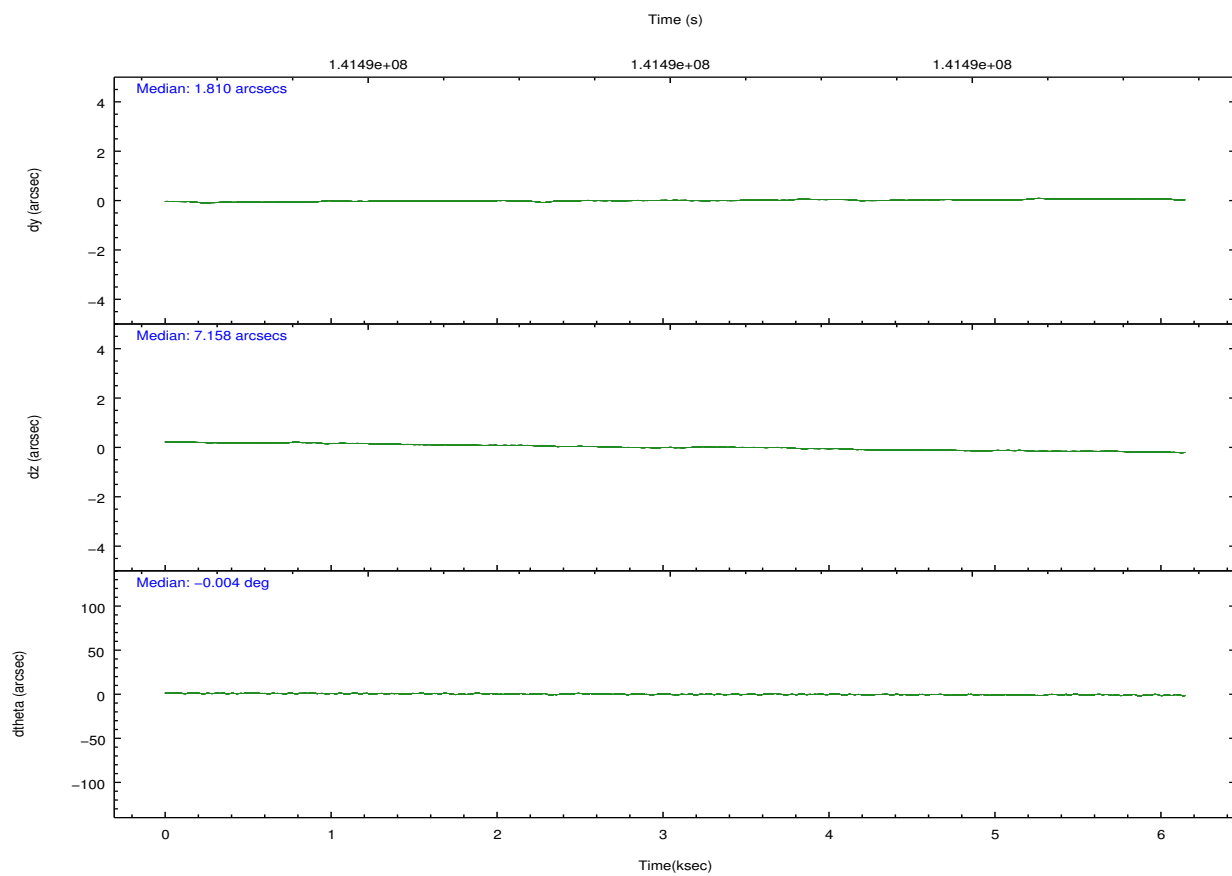
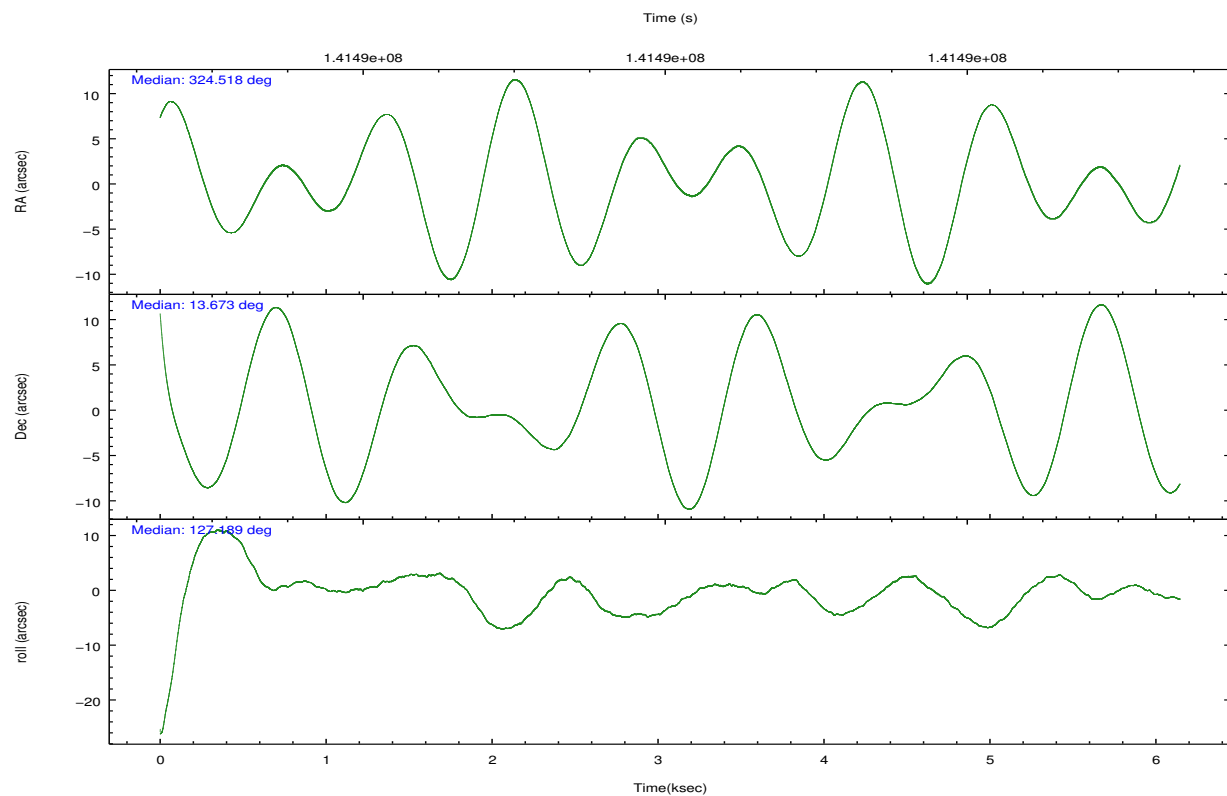
	ccd 2	ccd 3	ccd 5	ccd 6	ccd 7	ccd 8		ccd 2	ccd 3	ccd 5	ccd 6	ccd 7	ccd 8
level 1 events	39879	38698	58235	38151	52000	50184	grade 0 events	1868	1934	3157	1794	2098	3016
rejected events	35463	34204	31351	33639	30303	40304		4%	4%	5%	4%	4%	6%
rejected %	88%	88%	53%	88%	58%	80%	grade 1 events	17	19	78	25	53	25
								0%	0%	0%	0%	0%	0%
							grade 2 events	973	935	7827	978	4229	2302
								2%	2%	13%	2%	8%	4%
							grade 3 events	390	403	1106	452	1923	956
								0%	1%	1%	1%	3%	1%
							grade 4 events	413	450	1050	427	1871	866
								1%	1%	1%	1%	3%	1%
							grade 5 events	1411	1622	4454	1754	5040	2165
								3%	4%	7%	4%	9%	4%
							grade 6 events	778	774	13760	869	11587	2744
								1%	2%	23%	2%	22%	5%
							grade 7 events	34029	32561	26803	31852	25199	38110
								85%	84%	46%	83%	48%	75%

2.2 Compared Parameters

Parameter	Planned	Actual	Parameter	Planned	Actual
Instrument	ACIS	ACIS	Obspar format version number	7	7
Detector	ACIS-235678	ACIS-235678	Obspar file type	PREDICTED	ACTUAL
Grating	NONE	NONE	Obspar update status	NONE	UPDATED
Data mode	FAINT	FAINT	Number of optional ACIS chips dropped	0	0
Observation mode	POINTING	POINTING	On-chip summing requested	N	N
[deg] Pointing RA	324.543523	324.5175253690526	Subarray requested	NONE	NONE
[deg] Pointing Dec	13.663259	13.67344264942454	Alternating exposures requested	N	N
[deg] Pointing Roll	127.029343	127.1921002917524	[s] Primary exposure time	0.000000	3.2
[mm] SIM focus pos	-0.684267	-0.6828225247311905			
[mm] SIM defocus	0	0.001444936568705701			
[mm] SIM translation stage pos	-190.132523	-190.1425803651734			
[mm] SIM translation stage offset	0	0.01005778216563158			
[s] Observation start time (MET)	141487106.184000	141486132.28078			
Observation start date	2002-06-26T13:57:22	2002-06-26T13:42:12			
[s] Observation end time (MET)	141493106.184000	141493870.5186			
Observation end date	2002-06-26T15:37:22	2002-06-26T15:51:10			
Read mode	TIMED	TIMED			

2.3 Aspect



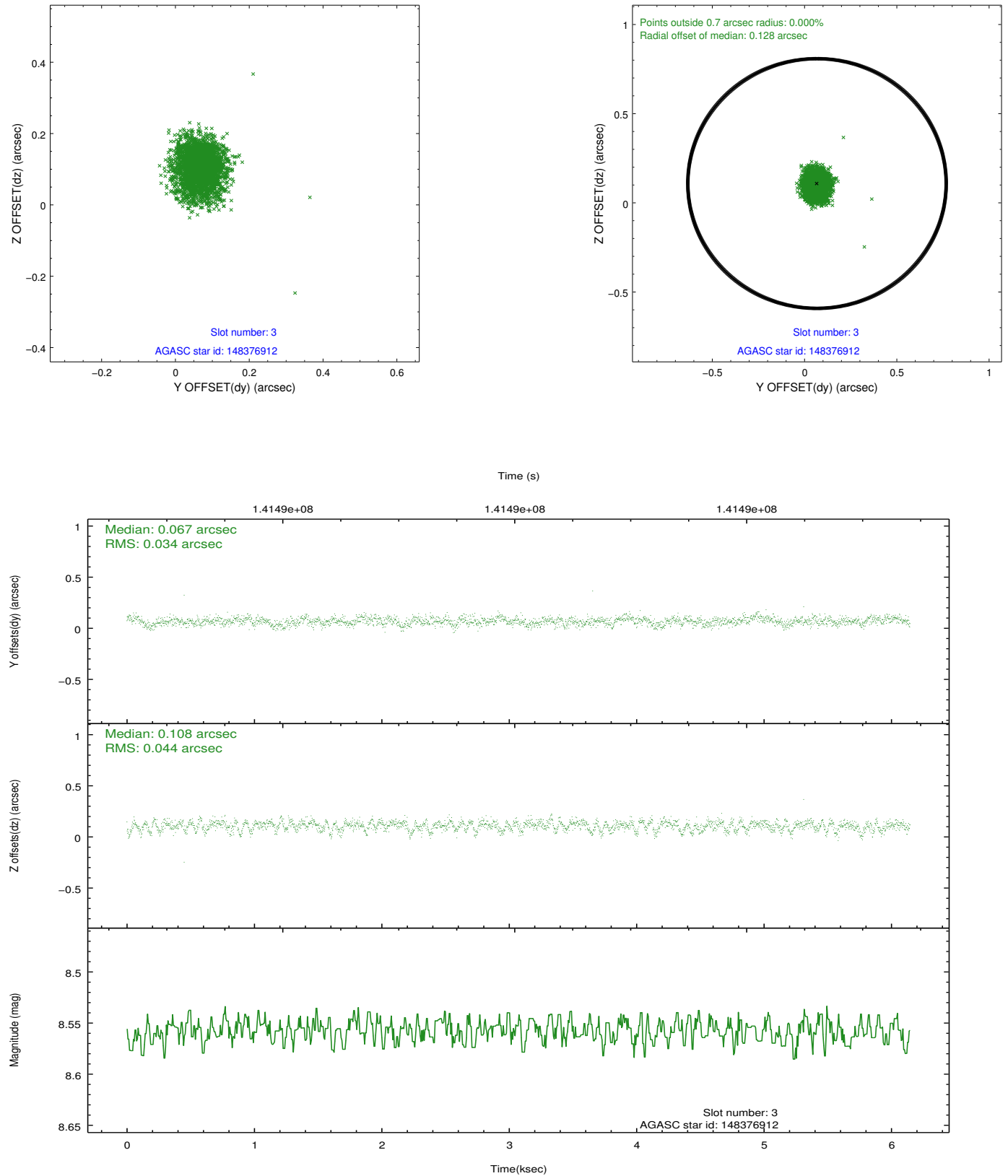


Slot Statistics

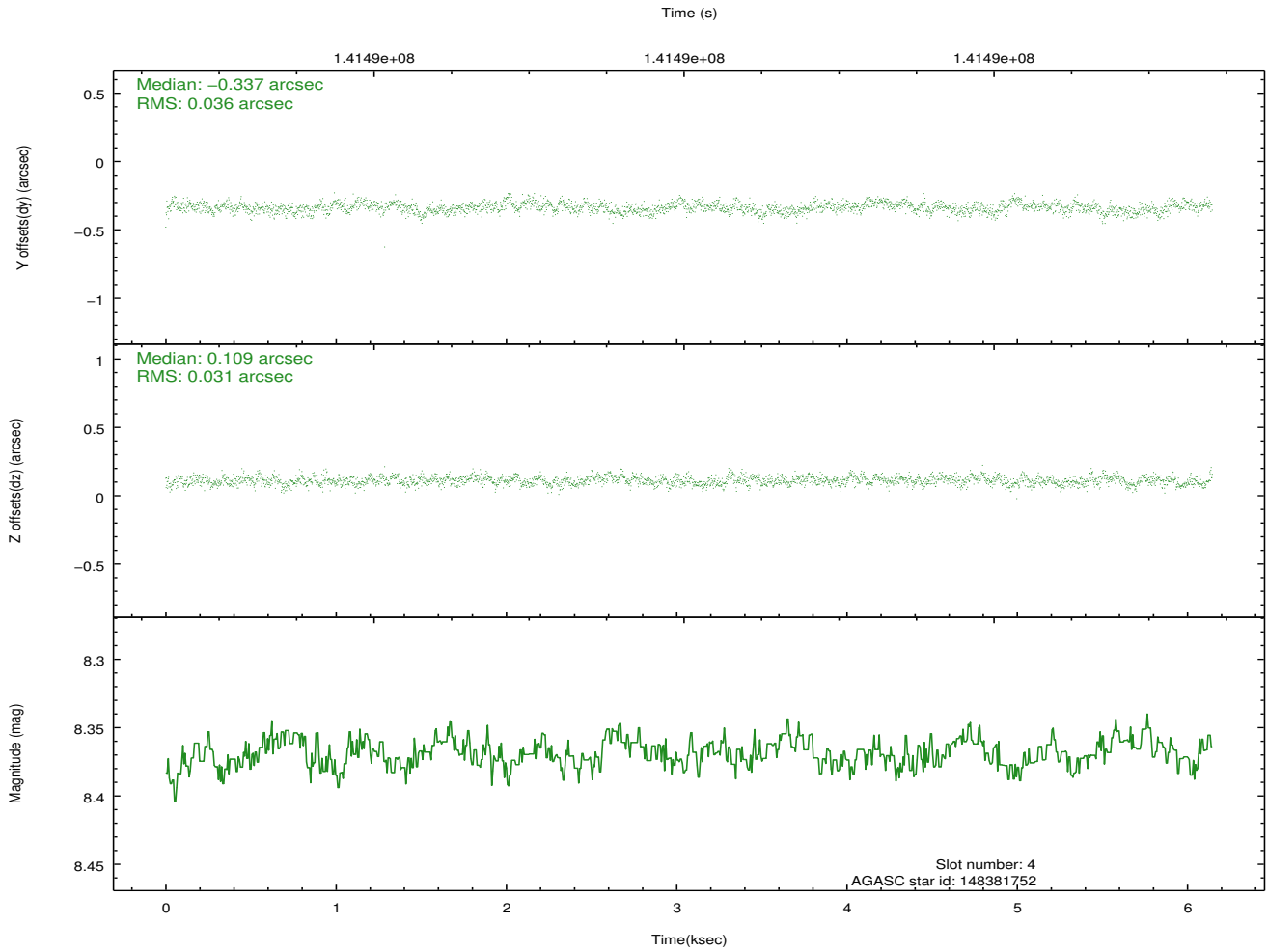
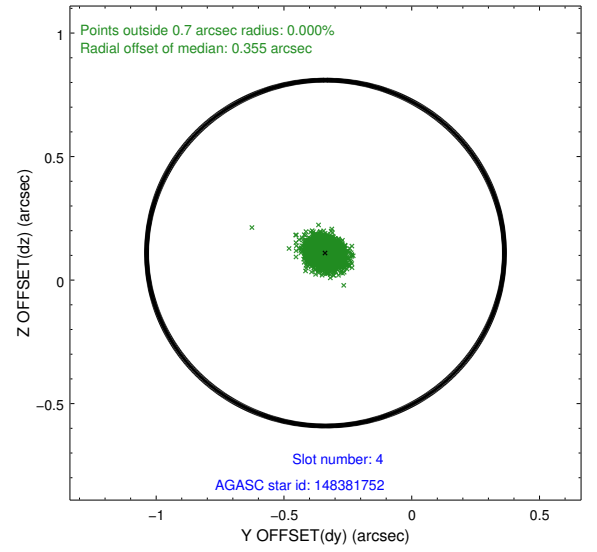
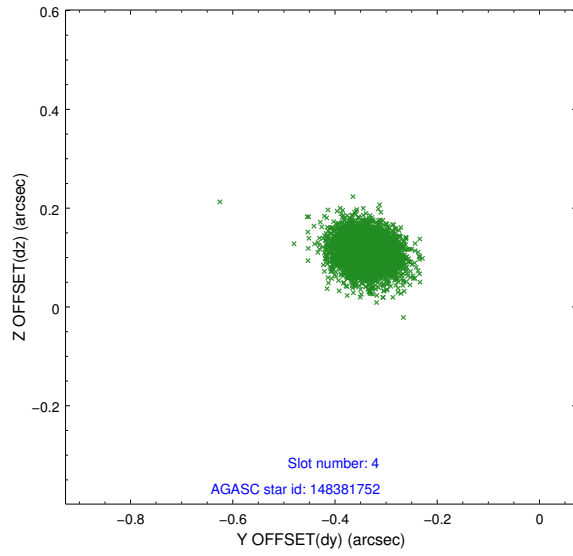
slot	status	id	mag	n_pts	med_dy	med_dz	dr1	dr2	ra	dec	mean_y	mean_z
0	FID	ACIS-S-2	7.11	1499	-0.033	-0.002	0.007	0.012	0.000000	0.000000	-754.45	-1728.28
1	FID	ACIS-S-4	7.20	1499	-0.019	0.016	0.006	0.010	0.000000	0.000000	2158.40	179.23
2	FID	ACIS-S-5	7.24	1499	0.021	-0.006	0.007	0.013	0.000000	0.000000	-1806.00	173.97
3	GUIDE	148376912	8.56	2999	0.067	0.108	0.058	0.097	324.981079	13.768254	-617.31	-1449.23
4	GUIDE	148381752	8.37	2999	-0.337	0.109	0.049	0.080	324.407078	14.222766	1895.40	-832.60
5	GUIDE	148386592	10.01	2997	0.241	-0.180	0.118	0.196	324.670007	13.126765	-1807.00	809.16
6	GUIDE	148379296	8.32	2998	-0.050	0.035	0.048	0.078	324.497529	13.999683	1064.02	-600.04
7	GUIDE	148383040	9.60	2995	0.079	-0.071	0.097	0.157	324.268768	13.435463	-73.48	1261.93

2.4 Star Slots

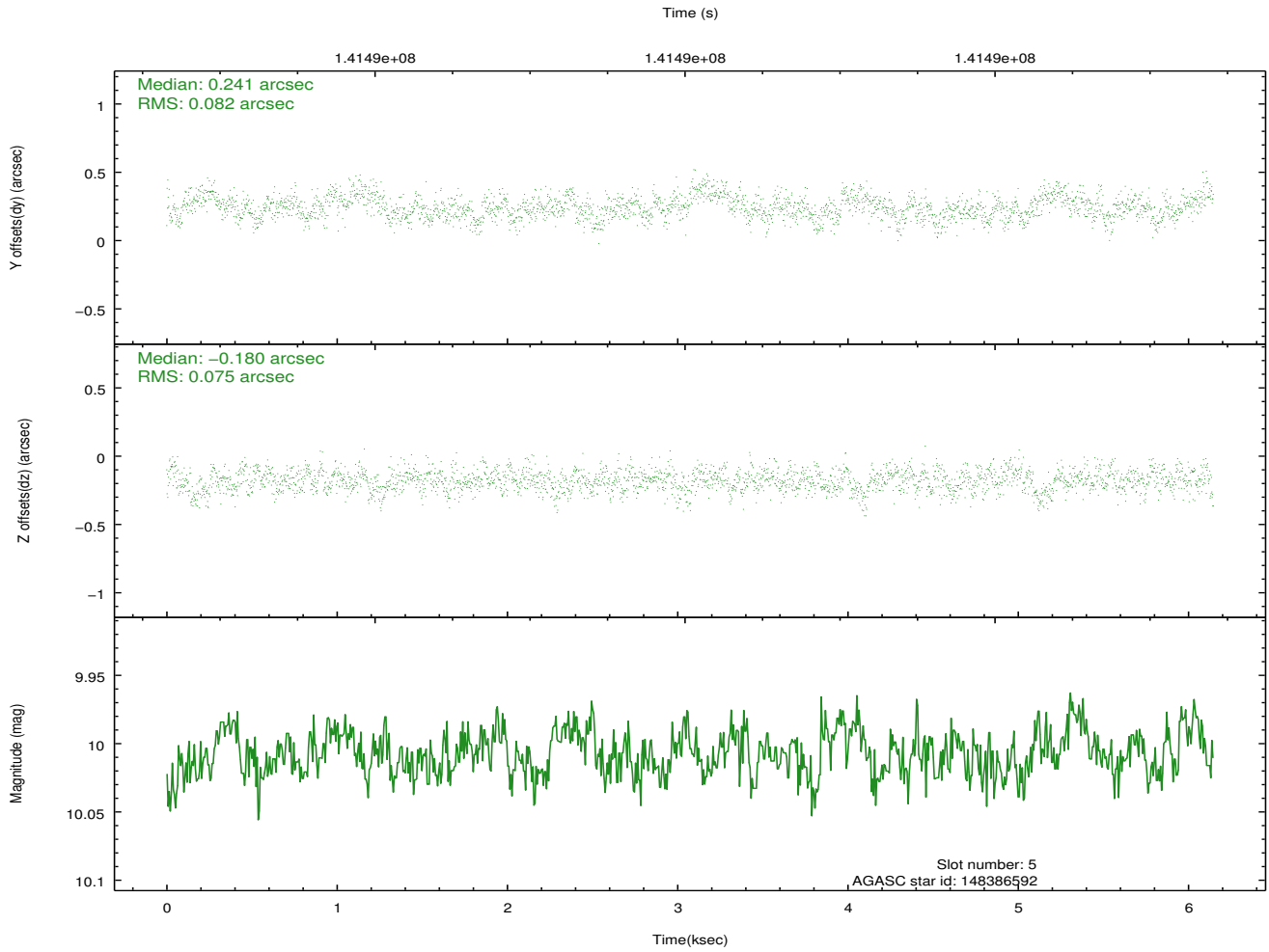
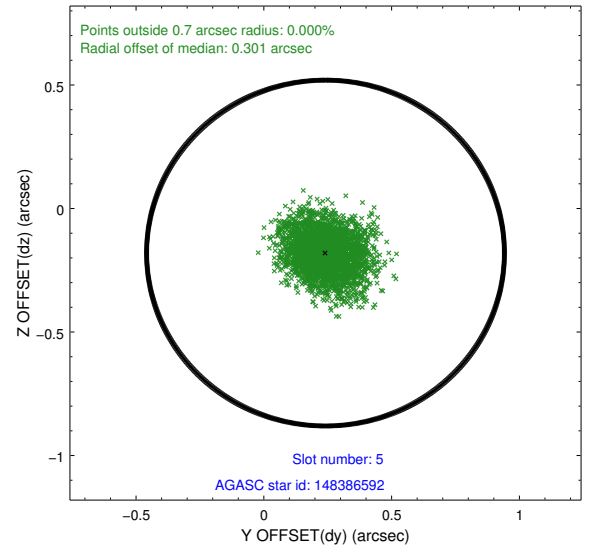
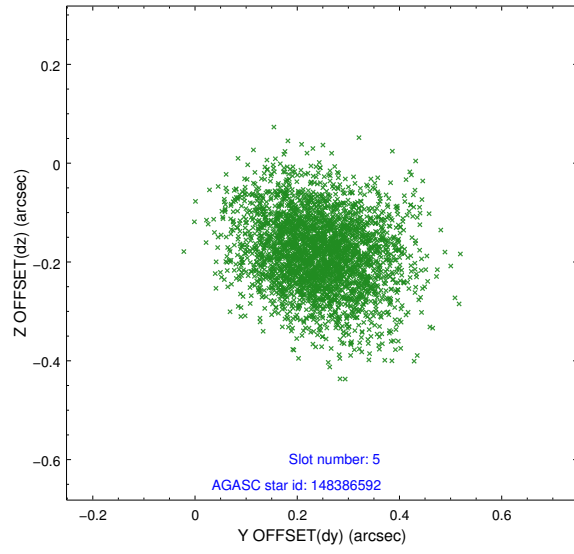
2.4.1 Slot 3



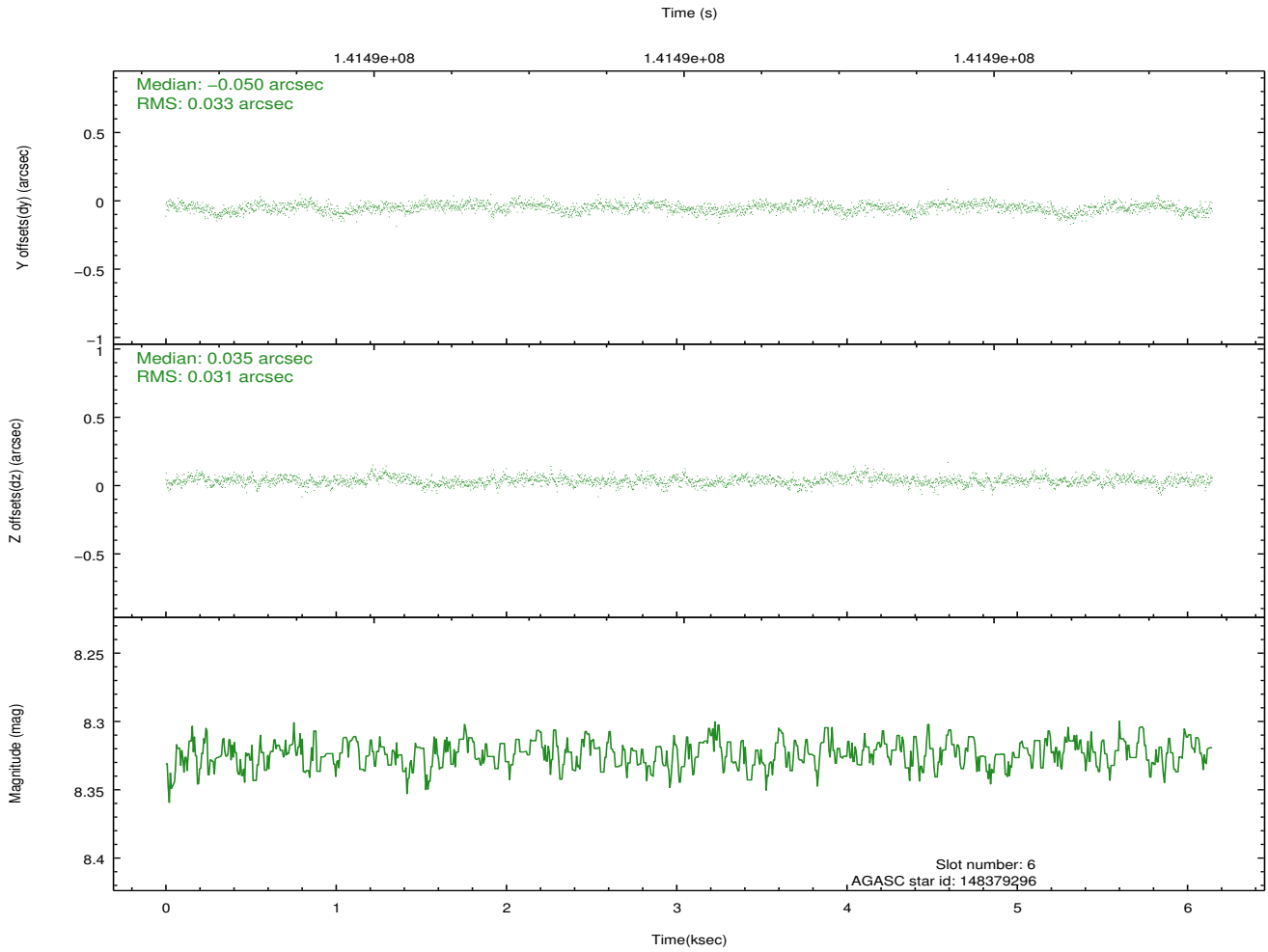
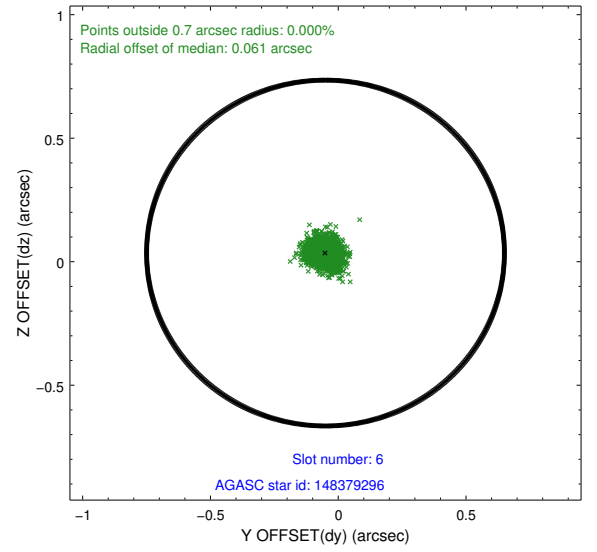
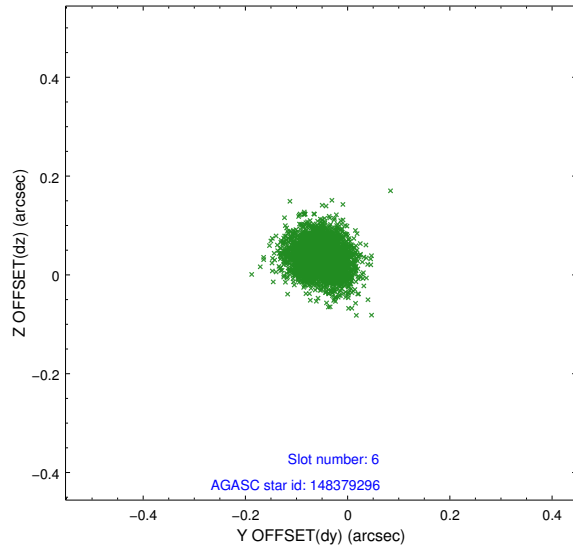
2.4.2 Slot 4



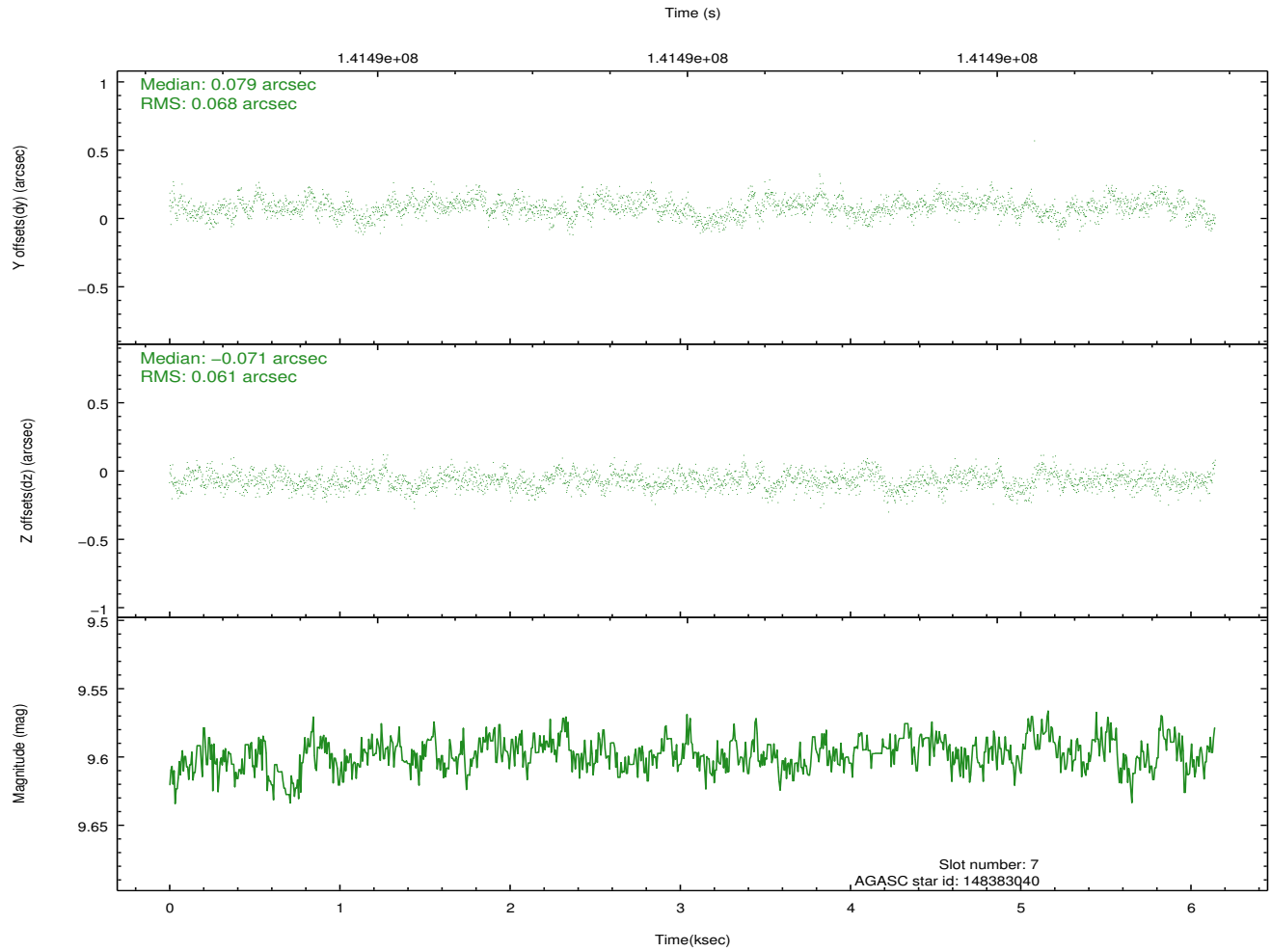
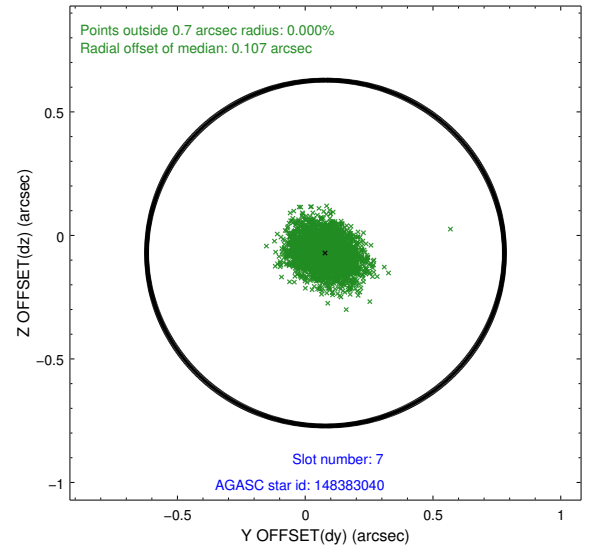
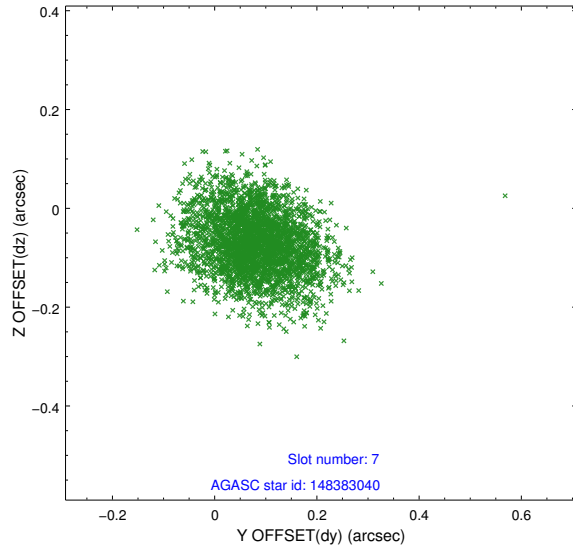
2.4.3 Slot 5



2.4.4 Slot 6

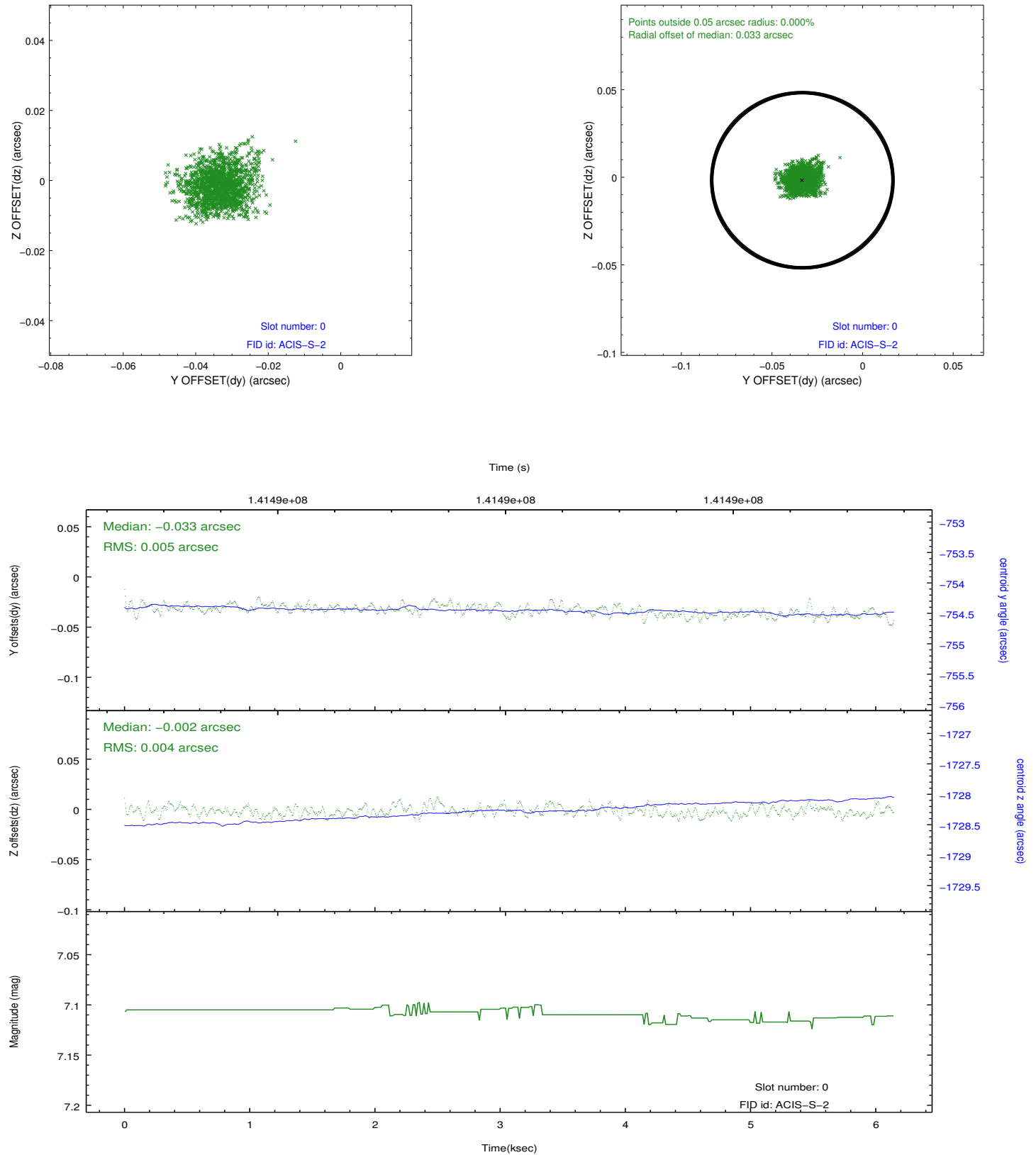


2.4.5 Slot 7

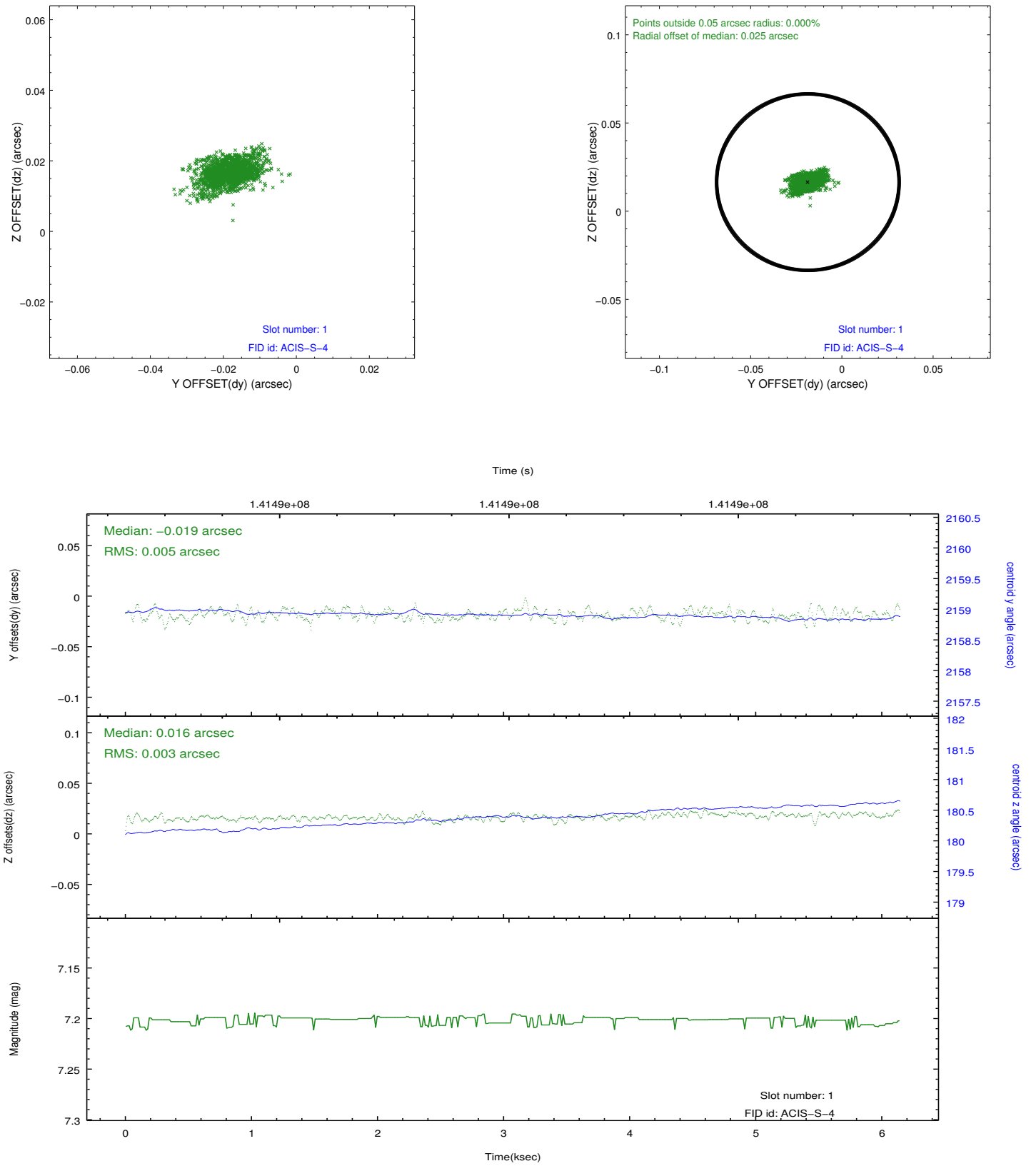


2.5 FID Slots

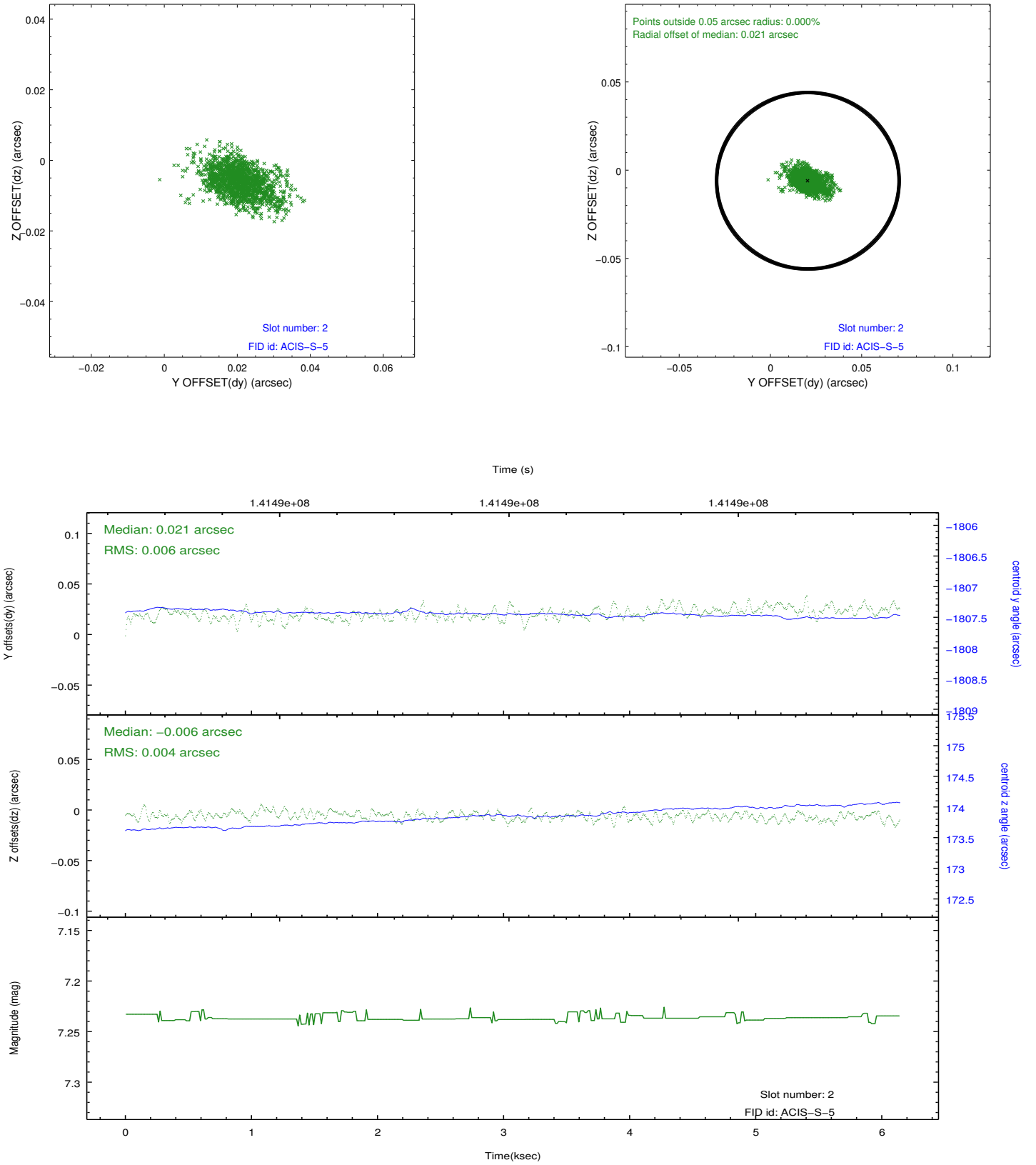
2.5.1 Slot 0



2.5.2 Slot 1



2.5.3 Slot 2



A Summary

A.1 Status

V&V Scientist	Jen Lauer
V&V Date (YYYY-MM-DD)	2012.10.19
V&V Edition	1
V&V Disposition and Status	OK
V&V Charge Time	5.987

A.2 Comments