

# V&V Reference Report

## L2 ASCDS Version : 8.4.5

Observation 3073 - L2 Version 3  
Chandra X-Ray Center

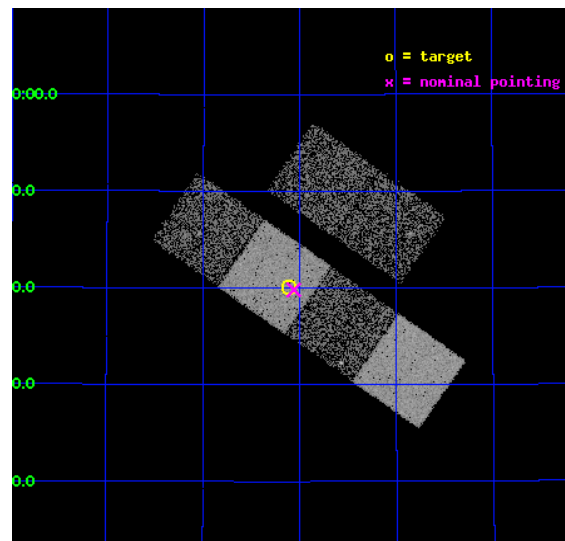
L2 Processing Date : Oct 7 2012

## Contents

<b>1</b>	<b>Front</b>	<b>2</b>
<b>2</b>	<b>OBI</b>	<b>3</b>
2.1	OBI . . . . .	3
2.1.1	Images . . . . .	3
2.1.2	Bias . . . . .	3
2.1.3	Parameters . . . . .	4
2.1.4	Events . . . . .	4
2.2	Compared Parameters . . . . .	5
2.3	Aspect . . . . .	6
2.4	Star Slots . . . . .	9
2.4.1	Slot 3 . . . . .	9
2.4.2	Slot 4 . . . . .	10
2.4.3	Slot 5 . . . . .	11
2.4.4	Slot 6 . . . . .	12
2.4.5	Slot 7 . . . . .	13
2.5	FID Slots . . . . .	14
2.5.1	Slot 0 . . . . .	14
2.5.2	Slot 1 . . . . .	15
2.5.3	Slot 2 . . . . .	16
<b>A</b>	<b>Summary</b>	<b>17</b>
A.1	Status . . . . .	17
A.2	Comments . . . . .	17

# 1 Front

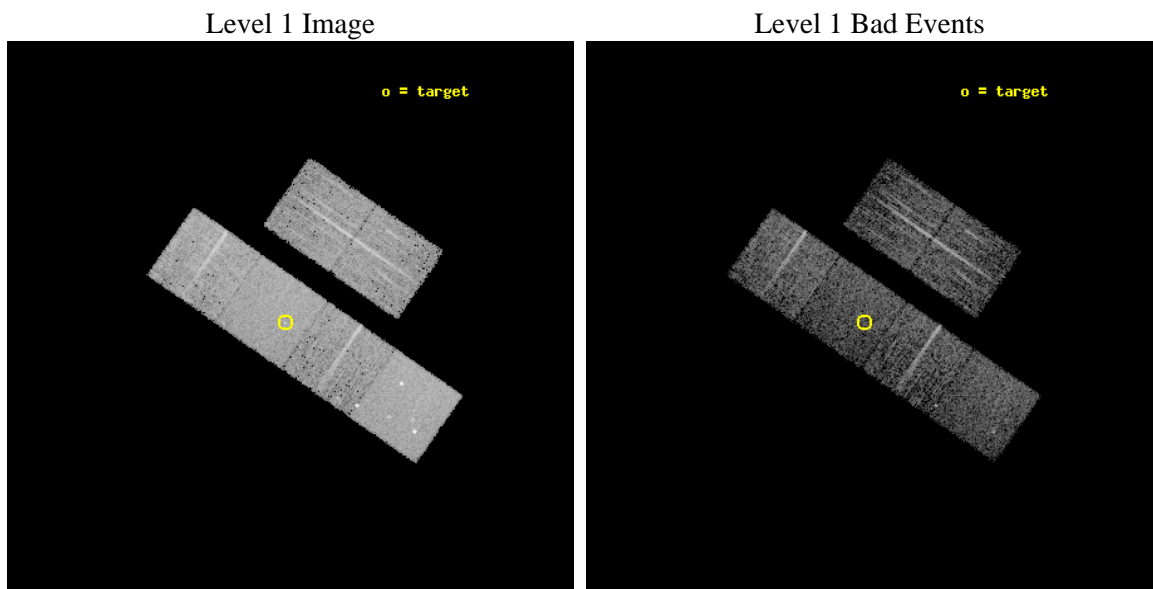
seq_num	700512	Sequence number
obs_id	3073	Observation id
title	X-RAY WEAK BROAD-LINE QUASARS: ABSORPTION OR INTRINSIC X_RAY WEAKNESS ?	Proposal title
observer	Dr Guido Risaliti	Principal investigator
object	HS 1237+4756	Source name
dtcycle	0	&#160
cycle	P	events from which exps? Prim/Second/Both
ra_targ	190.027917	Observer's specified target RA [deg]
dec_targ	47.667583	Observer's specified target Dec [deg]
ra_nom	190.01493580328	Nominal RA [deg]
dec_nom	47.663511956426	Nominal Dec [deg]
roll_nom	214.72733126622	Nominal Roll [deg]
revision	3	Processing version of data
ontime	4751.9999822974	Sum of GTIs [s]
livetime	4691.8272972107	Livetime [s]
ontime2	4751.9999822974	Sum of GTIs [s]
ontime3	4751.9999822974	Sum of GTIs [s]
ontime5	4751.9999822974	Sum of GTIs [s]
ontime6	4751.9999822974	Sum of GTIs [s]
ontime7	4751.9999822974	Sum of GTIs [s]
ontime8	4748.7590120435	Sum of GTIs [s]
l2events	49010	Number of level 2 events



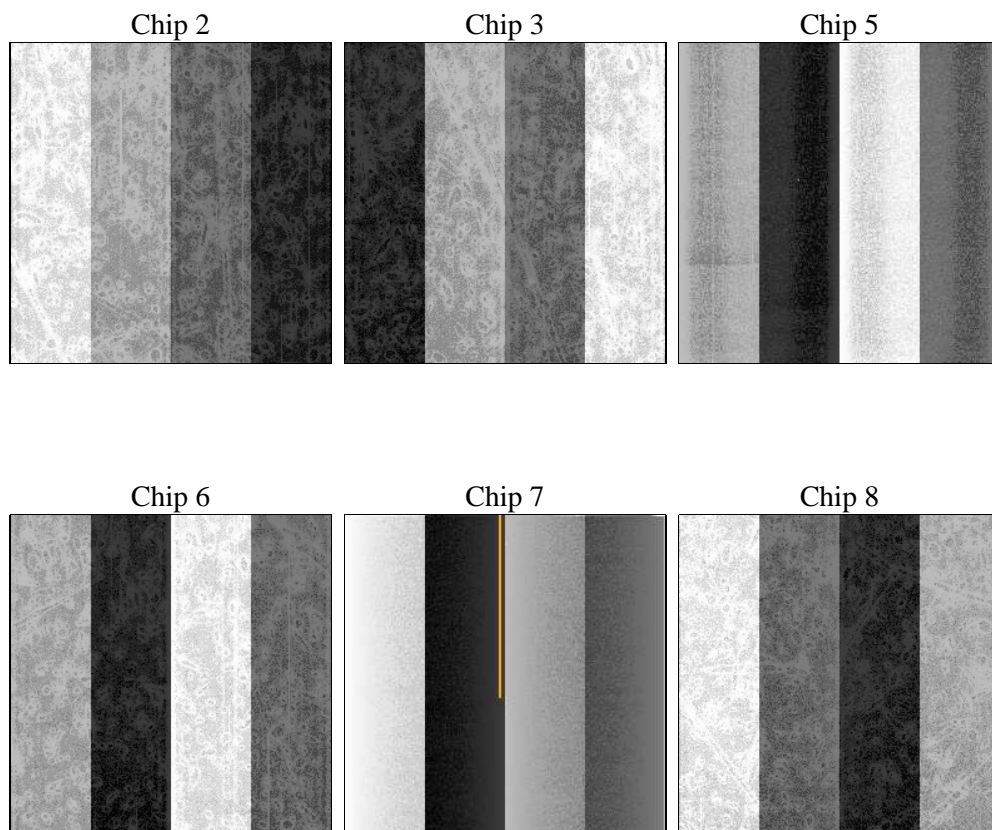
## 2 OBI

### 2.1 OBI

#### 2.1.1 Images



#### 2.1.2 Bias



### 2.1.3 Parameters

obi_num	0	Obi number	sched_exp_time	5000.000000	[s] Scheduled observation exposure time
ascdsver	8.4.5	Processing system revision	ontime	4751.9999822974	Sum of GTIs [s]
caldbver	4.5.2	&#160	ontime2	4751.9999822974	Sum of GTIs [s]
date	2012-10-07T08:08:42	Date and time of file creation	ontime3	4751.9999822974	Sum of GTIs [s]
revision	3	Processing version of data	ontime5	4751.9999822974	Sum of GTIs [s]
			ontime6	4751.9999822974	Sum of GTIs [s]
			ontime7	4751.9999822974	Sum of GTIs [s]
			ontime8	4748.7590120435	Sum of GTIs [s]
			l1events	226138	Number of level 1 events

### 2.1.4 Events

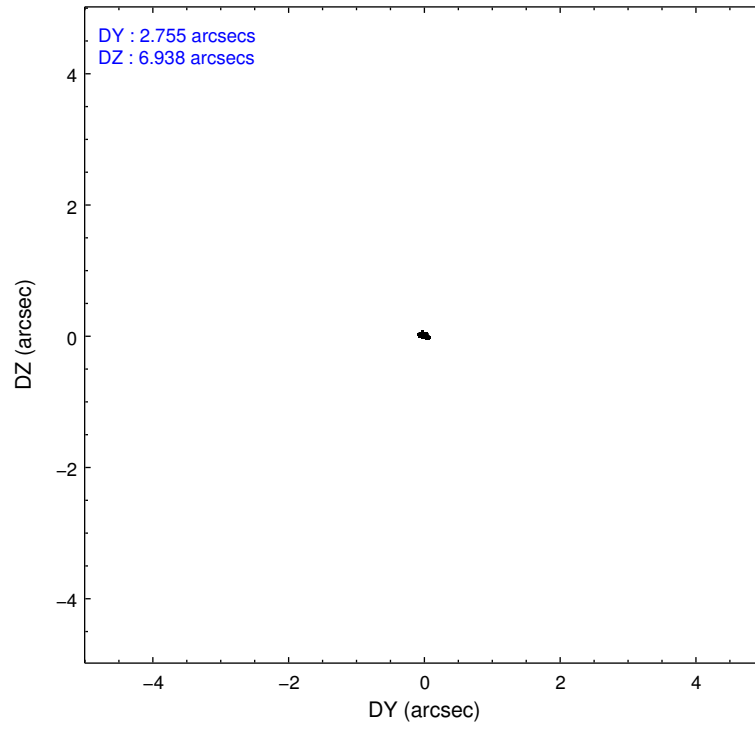
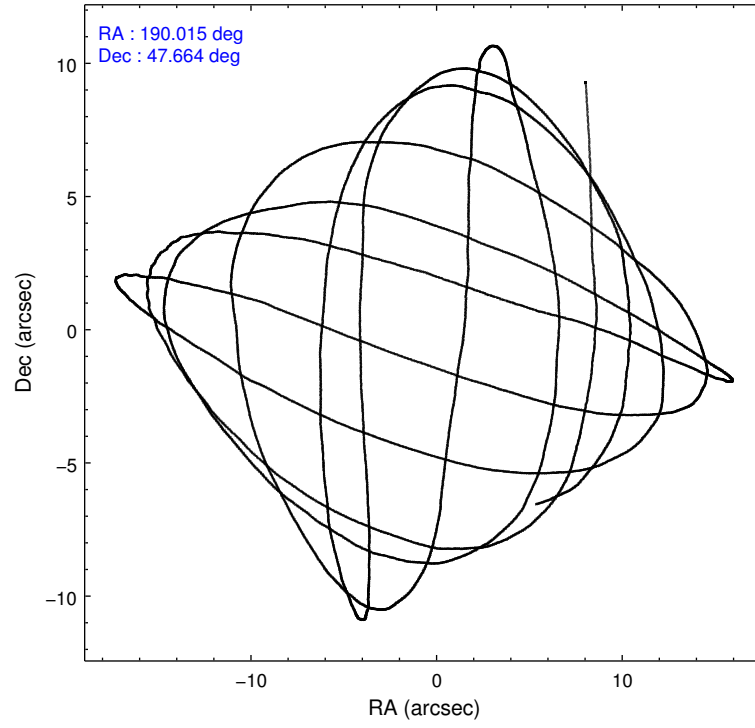
	ccd 2	ccd 3	ccd 5	ccd 6	ccd 7	ccd 8		ccd 2	ccd 3	ccd 5	ccd 6	ccd 7	ccd 8
level 1 events	31715	31112	47176	31423	41273	43439	grade 0 events	1536	1563	3188	1532	1717	2513
rejected events	28153	27458	25018	27717	23989	34935		4%	5%	6%	4%	4%	5%
rejected %	88%	88%	53%	88%	58%	80%	grade 1 events	19	22	138	18	28	29
								0%	0%	0%	0%	0%	0%
							grade 2 events	798	786	6506	737	3445	1864
								2%	2%	13%	2%	8%	4%
							grade 3 events	311	347	869	354	1572	869
								0%	1%	1%	1%	3%	2%
							grade 4 events	314	316	845	361	1536	881
								0%	1%	1%	1%	3%	2%
							grade 5 events	1108	1252	3480	1333	4016	1715
								3%	4%	7%	4%	9%	3%
							grade 6 events	615	650	10795	730	9038	2399
								1%	2%	22%	2%	21%	5%
							grade 7 events	27014	26176	21355	26358	19921	33169
								85%	84%	45%	83%	48%	76%

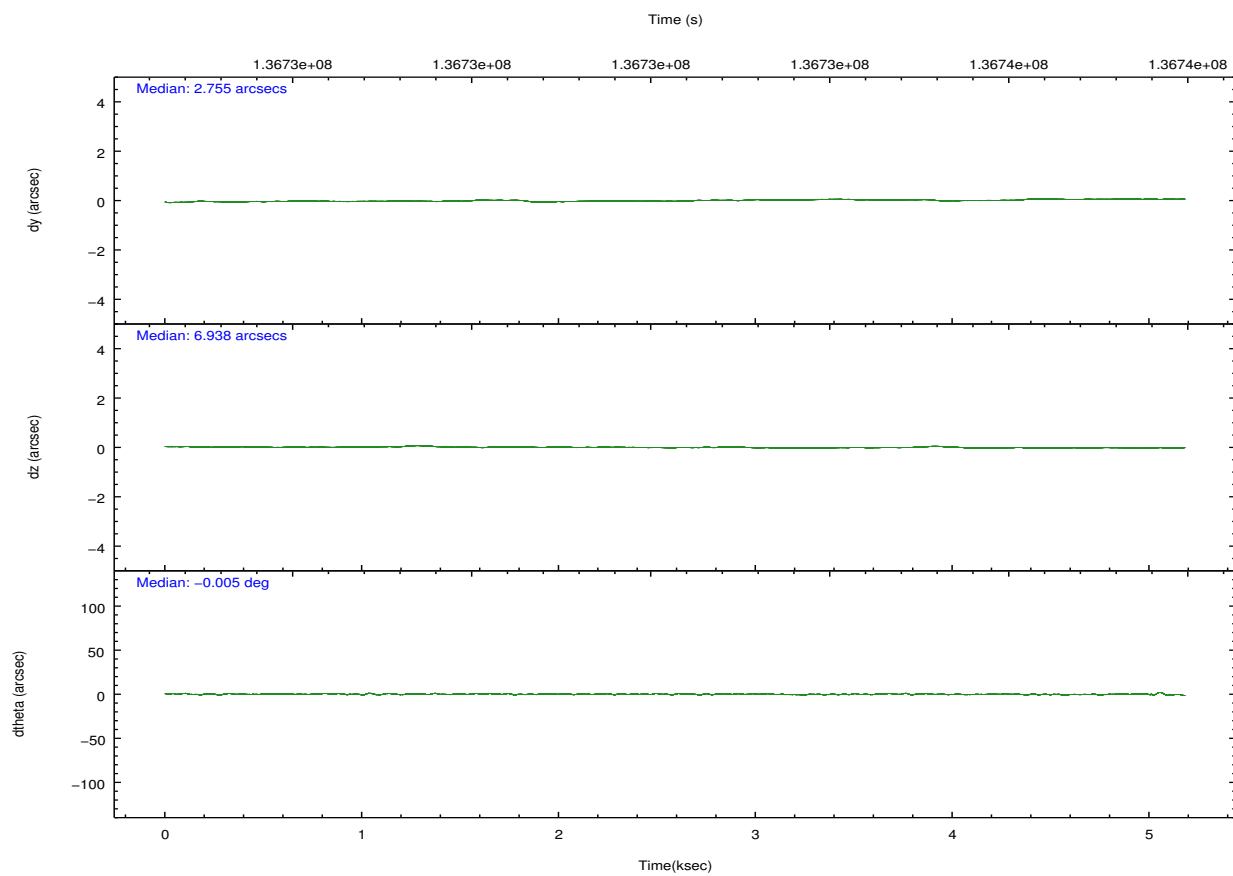
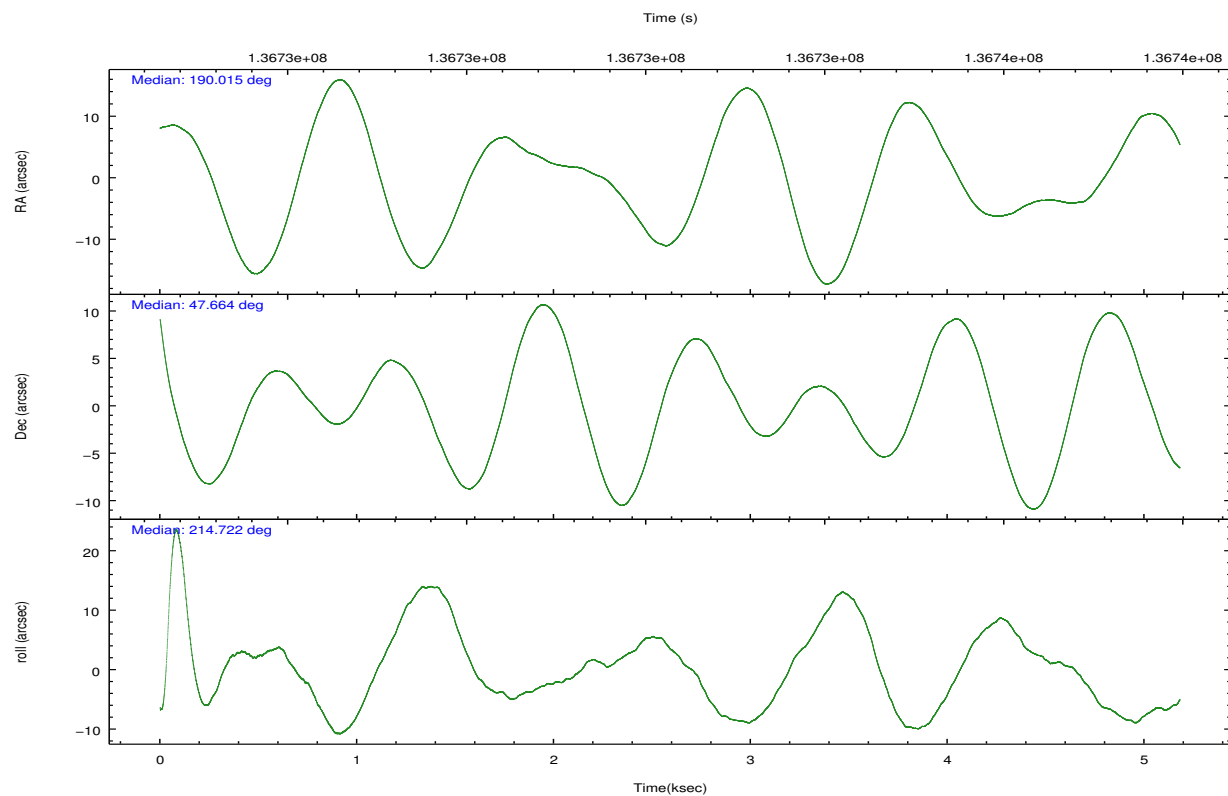


## 2.2 Compared Parameters

Parameter	Planned	Actual	Parameter	Planned	Actual
Instrument	ACIS	ACIS	Obspar format version number	7	7
Detector	ACIS-235678	ACIS-235678	Obspar file type	PREDICTED	ACTUAL
Grating	NONE	NONE	Obspar update status	NONE	UPDATED
Data mode	FAINT	FAINT	Number of optional ACIS chips dropped	0	0
Observation mode	POINTING	POINTING	On-chip summing requested	N	N
[deg] Pointing RA	190.031632	190.0149358032754	Subarray requested	NONE	NONE
[deg] Pointing Dec	47.688333	47.66351195642581	Alternating exposures requested	N	N
[deg] Pointing Roll	214.558434	214.7273312662159	[s] Primary exposure time	0.000000	3.2
[mm] SIM focus pos	-0.684267	-0.6828225247311905			
[mm] SIM defocus	0	0.001444936568705701			
[mm] SIM translation stage pos	-190.132523	-190.1400660498719			
[mm] SIM translation stage offset	0	0.00754346686406393			
[s] Observation start time (MET)	136730728.184000	136730103.38652			
Observation start date	2002-05-02T12:44:24	2002-05-02T12:35:03			
[s] Observation end time (MET)	136735728.184000	136736187.27427			
Observation end date	2002-05-02T14:07:44	2002-05-02T14:16:27			
Read mode	TIMED	TIMED			

## 2.3 Aspect



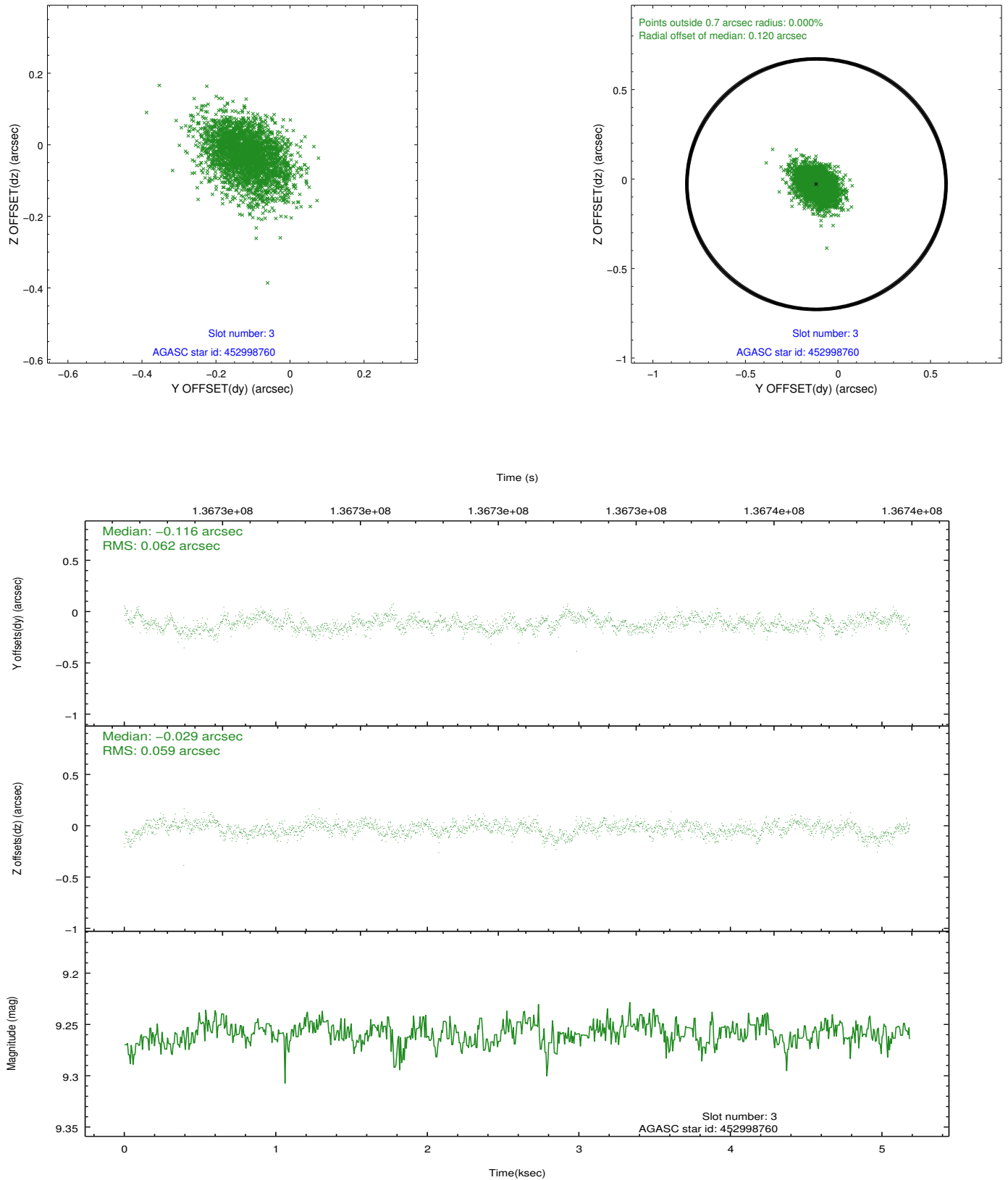


### Slot Statistics

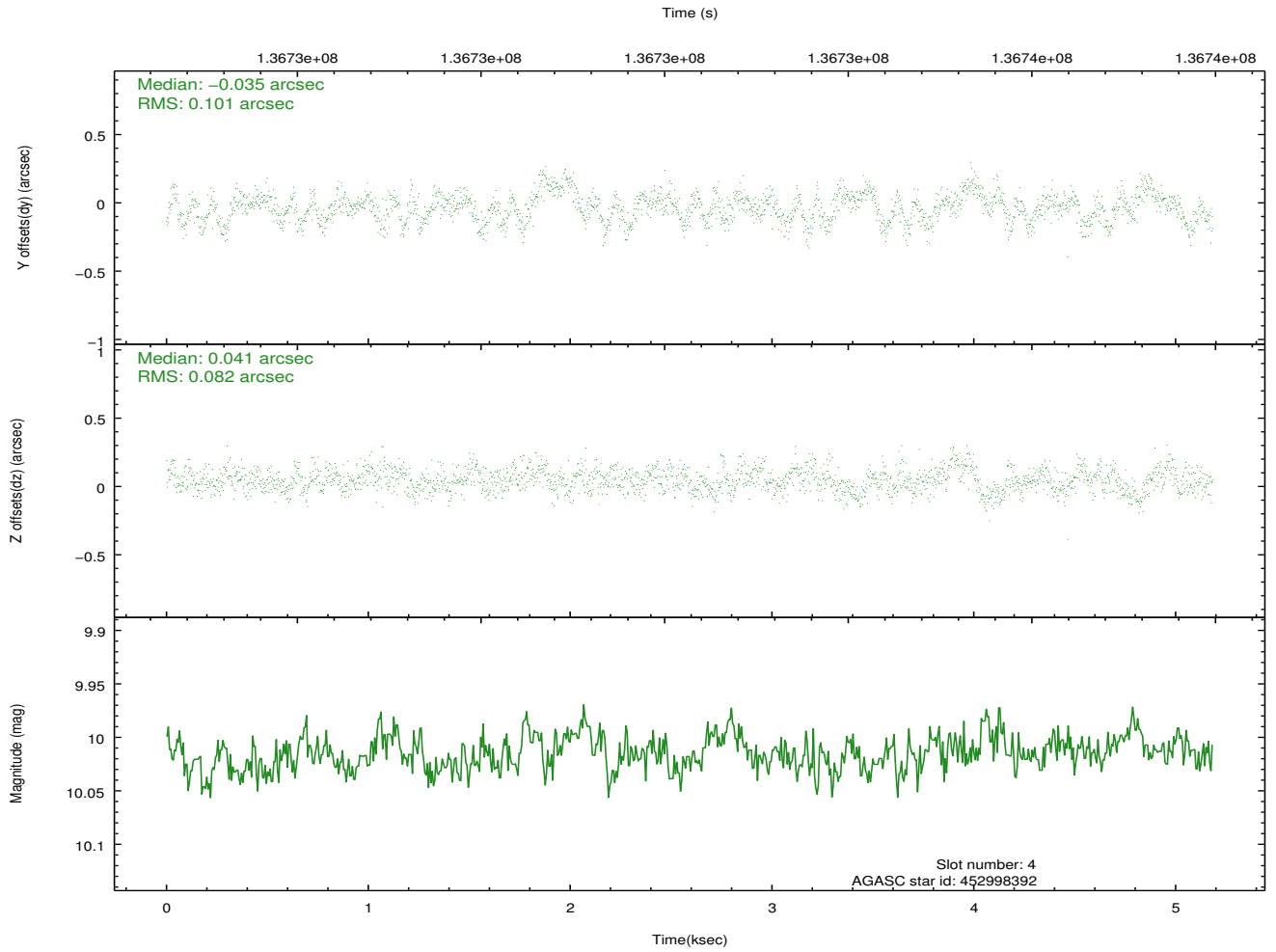
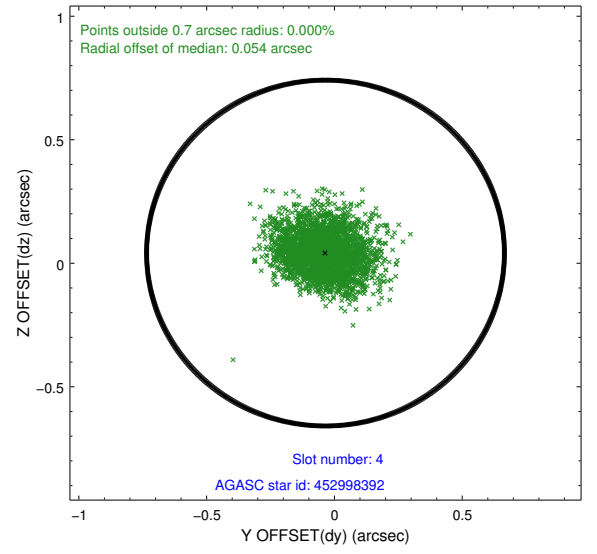
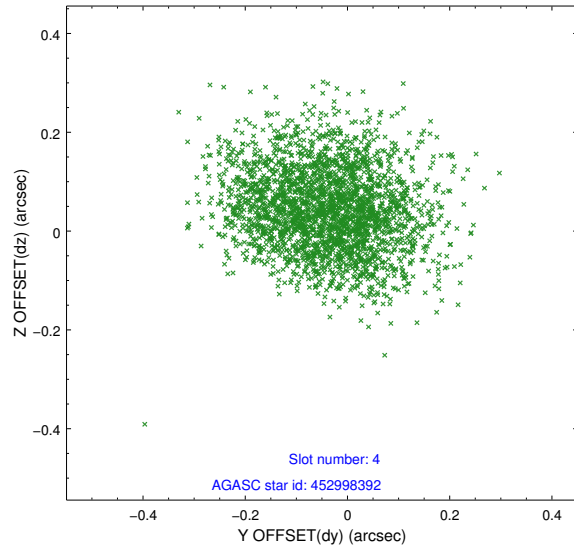
slot	status	id	mag	n_pts	med_dy	med_dz	dr1	dr2	ra	dec	mean_y	mean_z
0	FID	ACIS-S-2	7.11	1264	-0.020	0.006	0.006	0.010	0.000000	0.000000	-755.39	-1728.10
1	FID	ACIS-S-4	7.20	1264	-0.033	0.008	0.005	0.010	0.000000	0.000000	2157.33	179.20
2	FID	ACIS-S-5	7.24	1264	0.022	-0.005	0.006	0.012	0.000000	0.000000	-1806.70	174.16
3	GUIDE	452998760	9.26	2527	-0.116	-0.029	0.089	0.150	190.429439	47.859255	-1142.05	36.19
4	GUIDE	452998392	10.02	2526	-0.035	0.041	0.139	0.224	191.045793	47.569981	-1796.91	1734.84
5	GUIDE	452990752	10.65	2484	-0.062	0.212	0.164	0.263	189.321365	47.828909	1121.27	-1395.97
6	GUIDE	452998240	9.37	2526	-0.020	0.143	0.089	0.143	189.447374	48.065399	384.98	-1919.97
7	BAD	452994656	10.48	2409	0.240	-0.387	0.183	0.304	190.950045	47.293412	-1048.53	2430.83

## 2.4 Star Slots

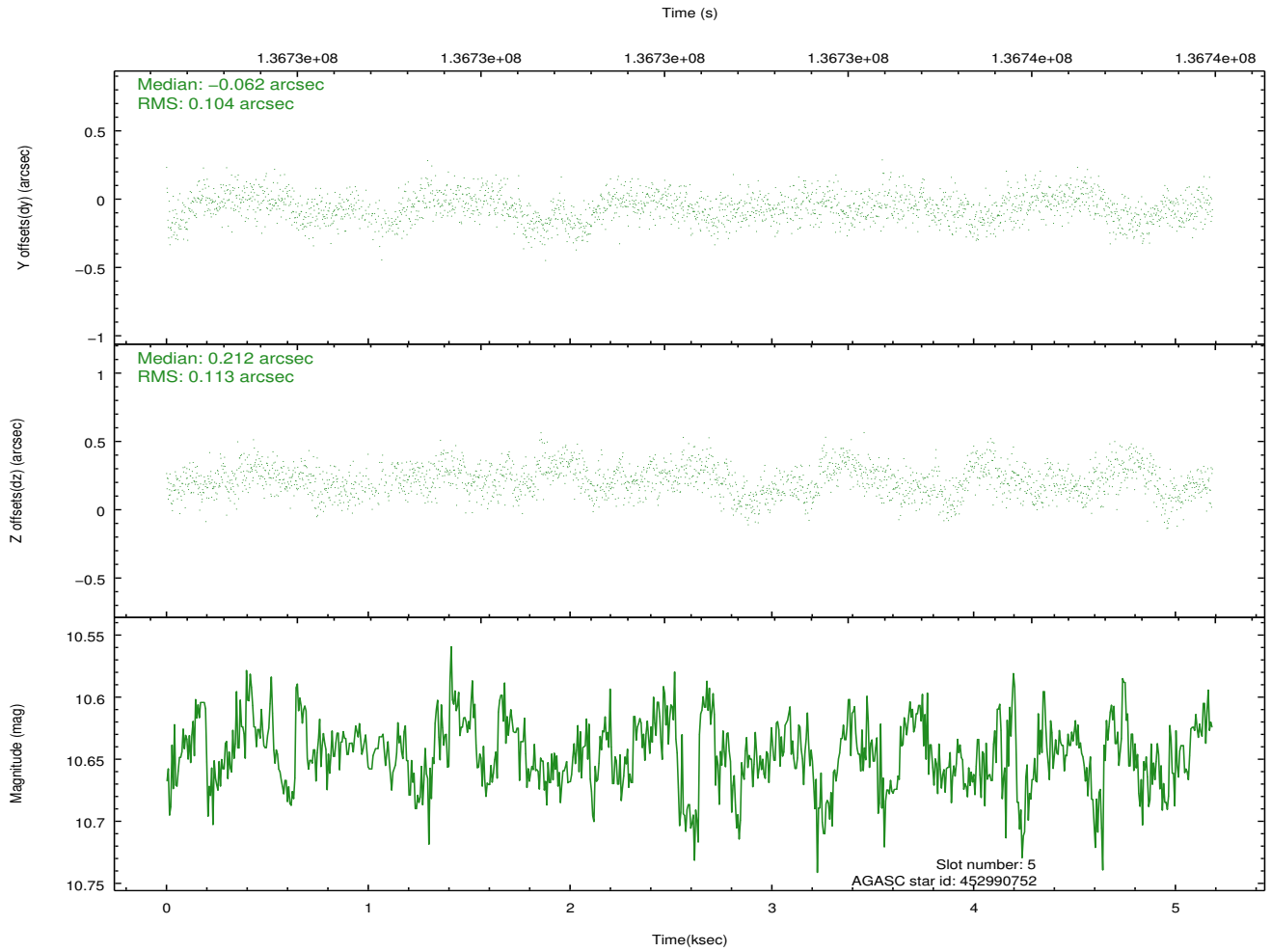
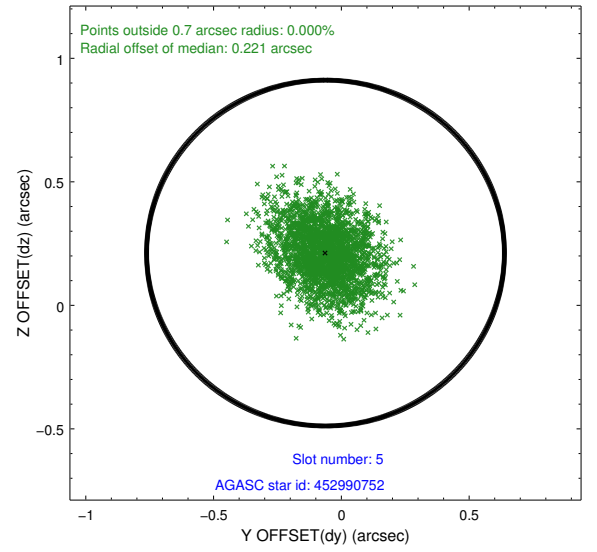
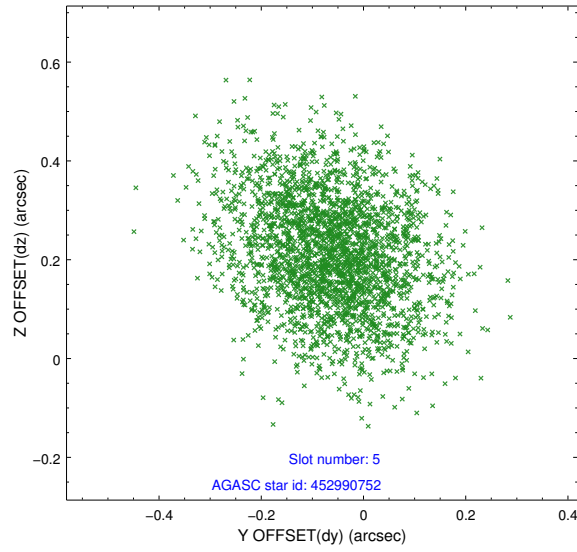
### 2.4.1 Slot 3



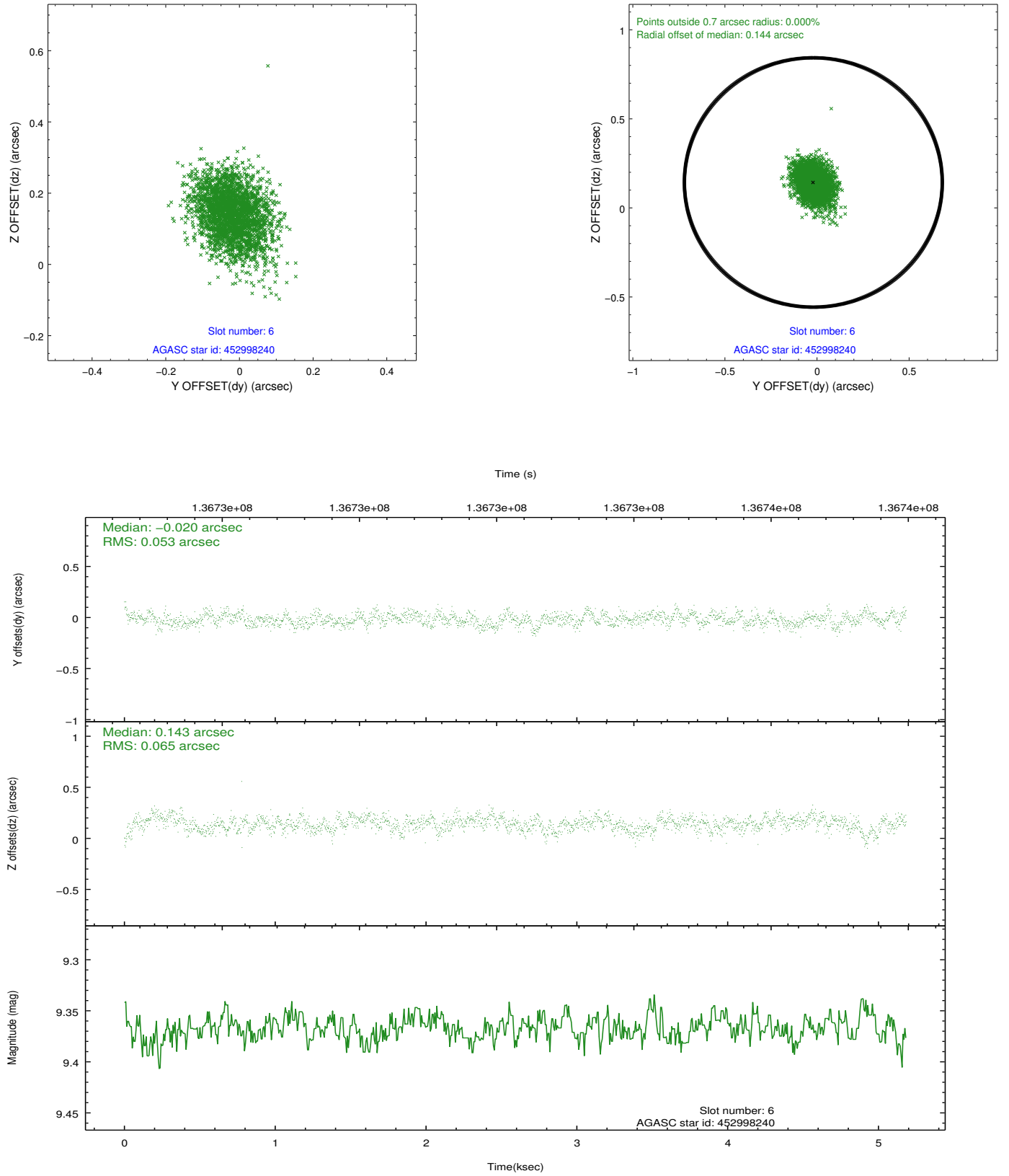
## 2.4.2 Slot 4



### 2.4.3 Slot 5

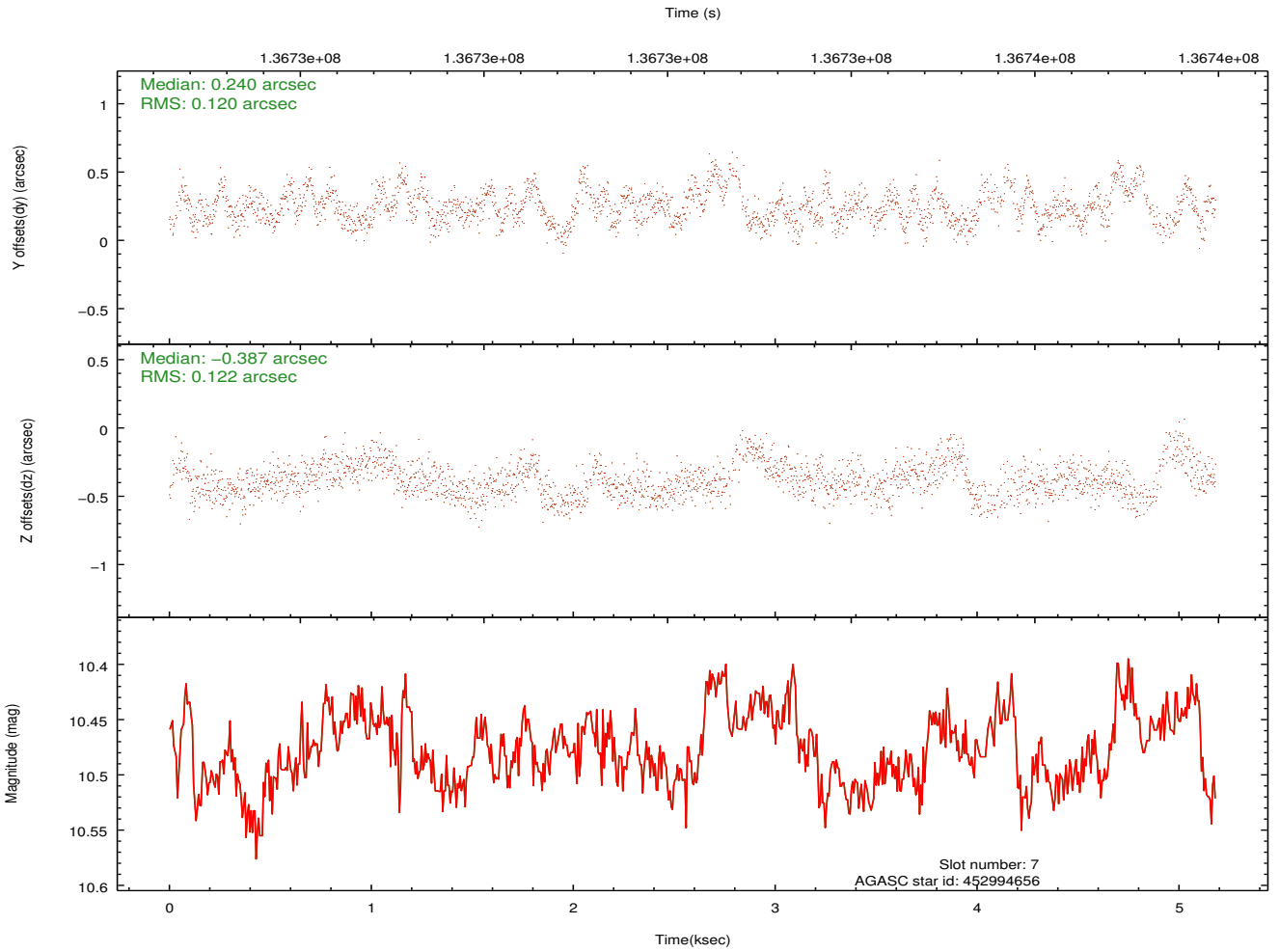
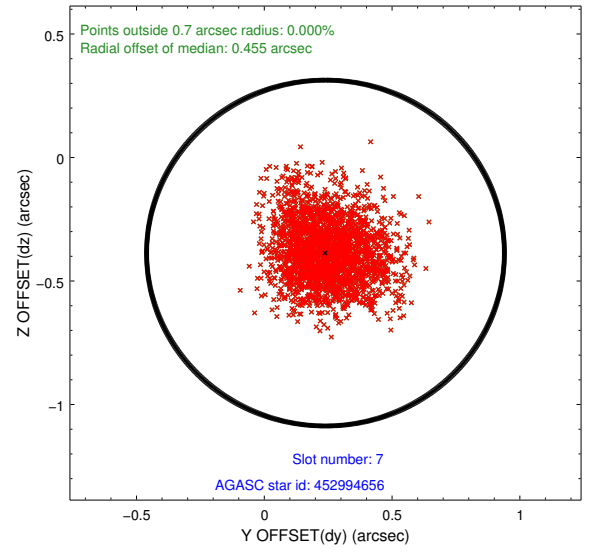
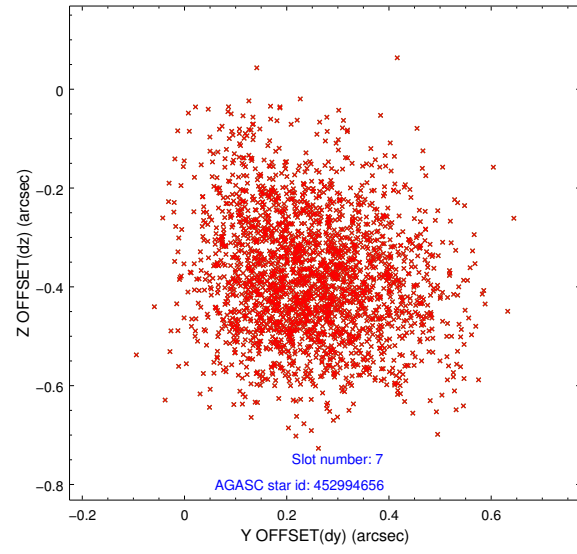


## 2.4.4 Slot 6



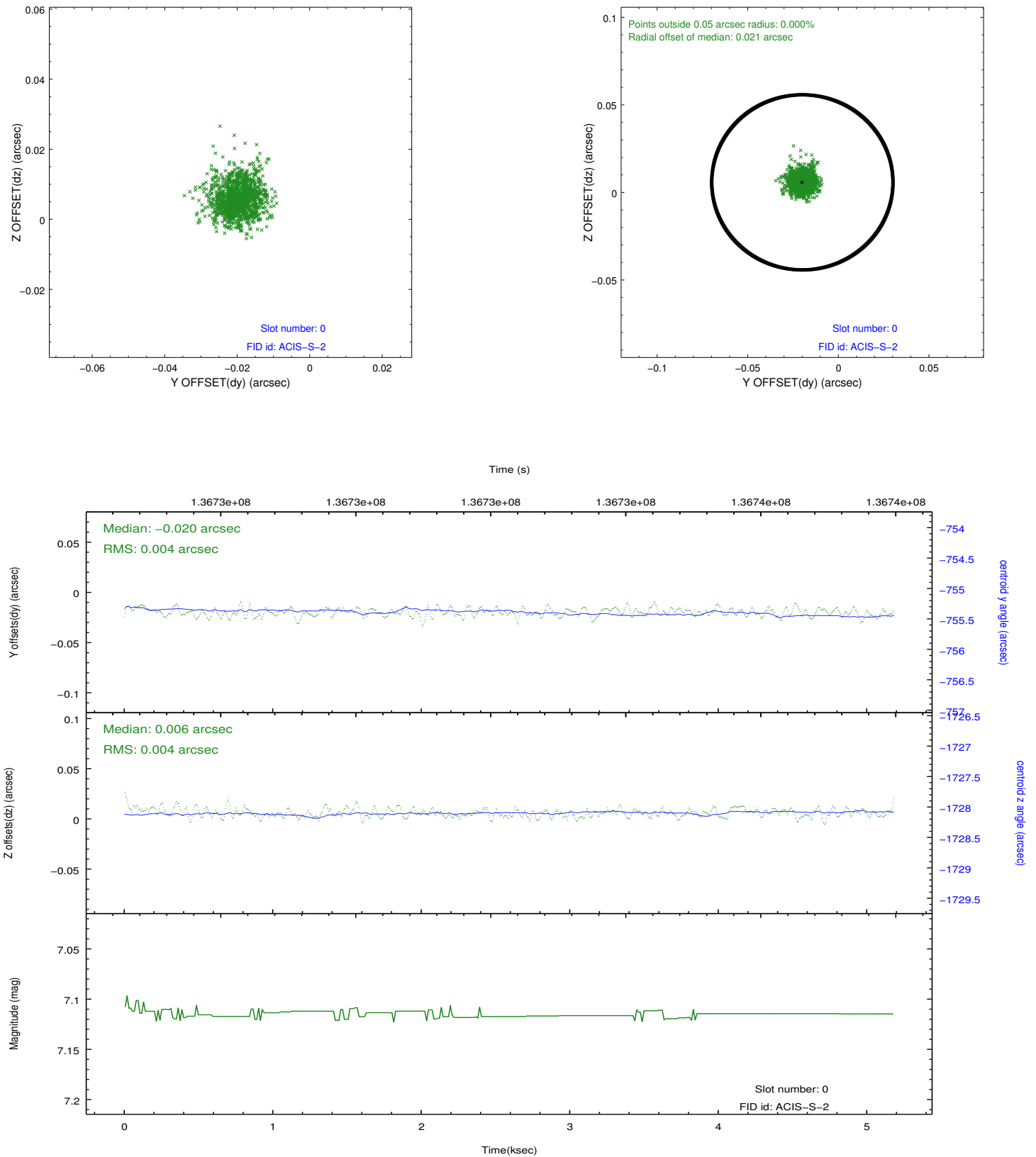


## 2.4.5 Slot 7

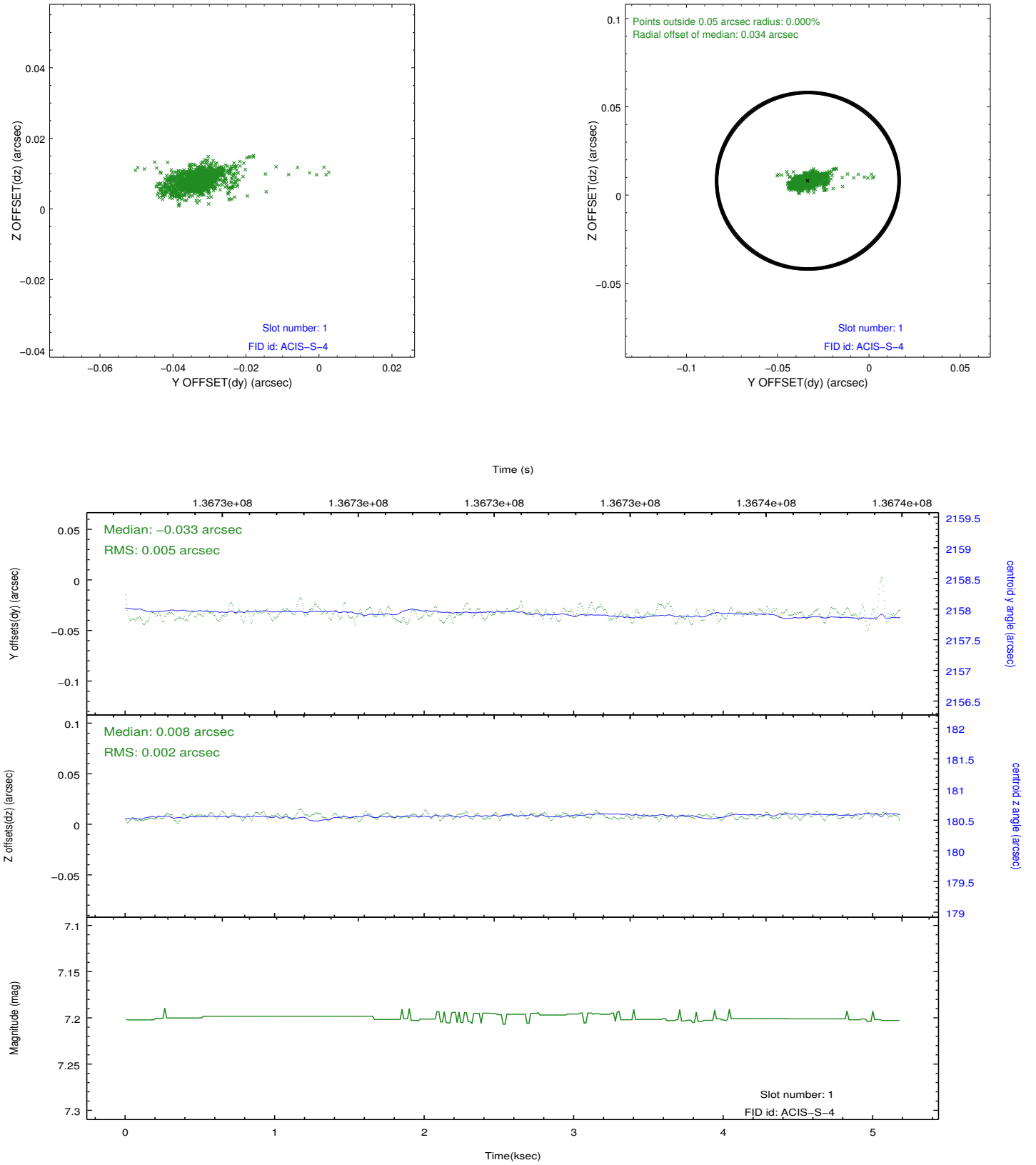


## 2.5 FID Slots

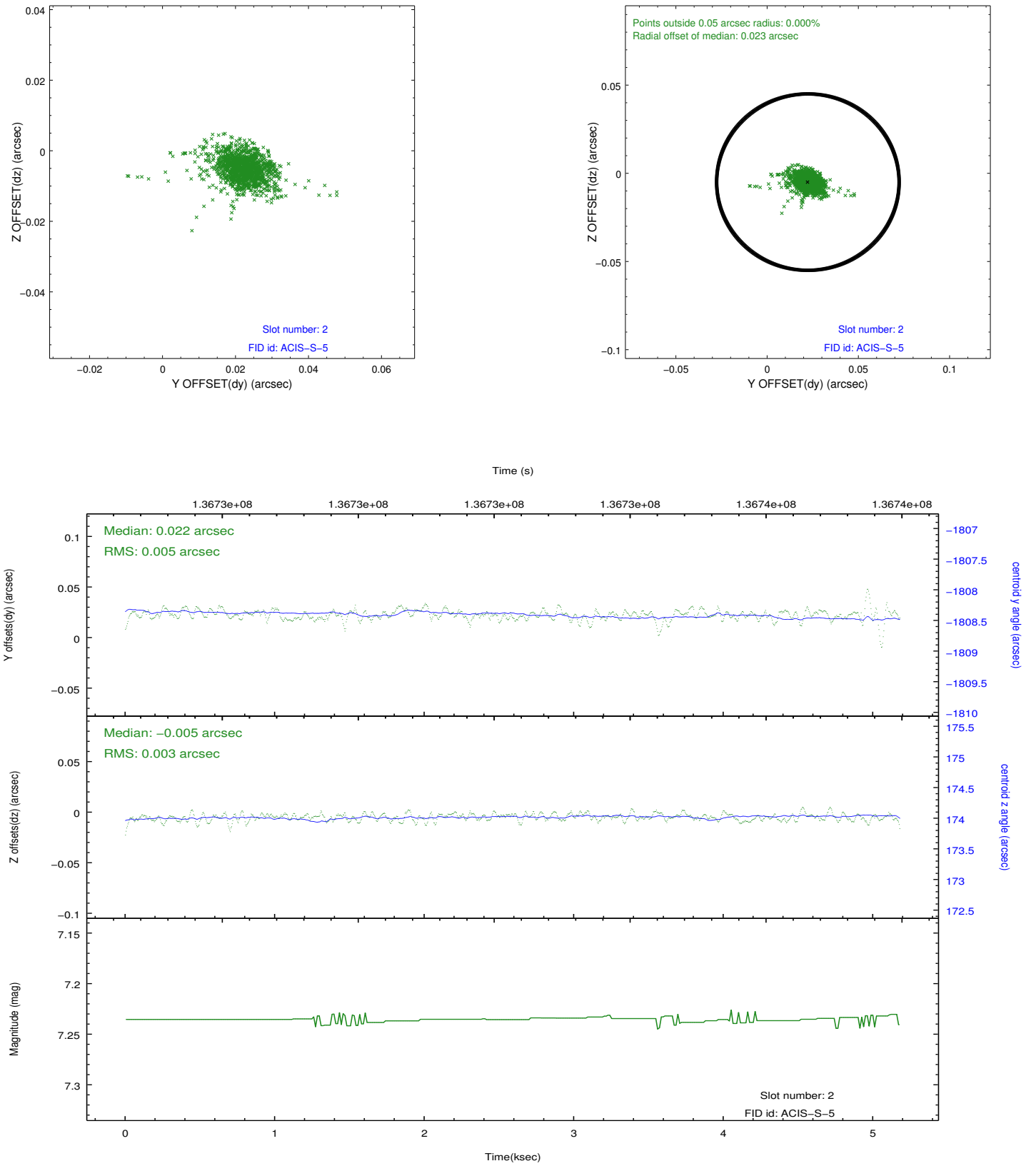
### 2.5.1 Slot 0



## 2.5.2 Slot 1



### 2.5.3 Slot 2



## A Summary

### A.1 Status

V&V Scientist	Beth Sundheim
V&V Date (YYYY-MM-DD)	2012.10.12
V&V Edition	1
V&V Disposition and Status	OK
V&V Charge Time	4.755

### A.2 Comments