

# V&V Reference Report

## L2 ASCDS Version : 8.4.5

Observation 3061 - L2 Version 3  
Chandra X-Ray Center

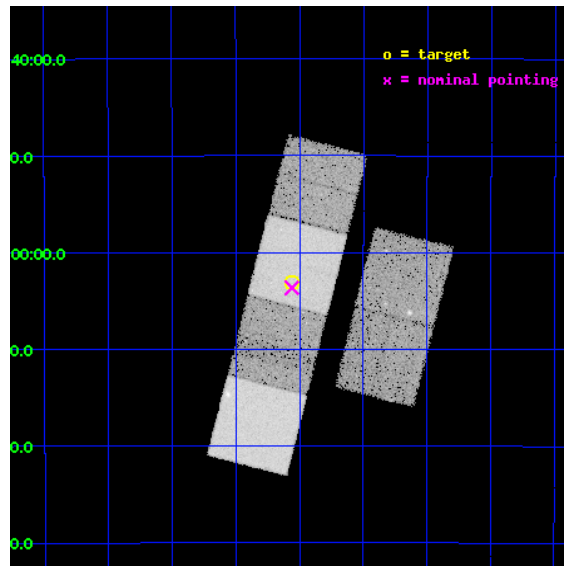
L2 Processing Date : Oct 17 2012

## Contents

<b>1</b>	<b>Front</b>	<b>2</b>
<b>2</b>	<b>OBI</b>	<b>3</b>
2.1	OBI . . . . .	3
2.1.1	Images . . . . .	3
2.1.2	Bias . . . . .	3
2.1.3	Parameters . . . . .	4
2.1.4	Events . . . . .	4
2.2	Compared Parameters . . . . .	5
2.3	Aspect . . . . .	6
2.4	Star Slots . . . . .	9
2.4.1	Slot 3 . . . . .	9
2.4.2	Slot 4 . . . . .	10
2.4.3	Slot 5 . . . . .	11
2.4.4	Slot 6 . . . . .	12
2.4.5	Slot 7 . . . . .	13
2.5	FID Slots . . . . .	14
2.5.1	Slot 0 . . . . .	14
2.5.2	Slot 1 . . . . .	15
2.5.3	Slot 2 . . . . .	16
<b>A</b>	<b>Summary</b>	<b>17</b>
A.1	Status . . . . .	17
A.2	Comments . . . . .	17

# 1 Front

seq_num	700500	Sequence number
obs_id	3061	Observation id
title	X-RAY STUDIES OF HIGH REDSHIFT RADIO GALAXIES	Proposal title
observer	Dr. Chris Carilli	Principal investigator
object	2048-272	Source name
dtcycle	0	&#160
cycle	P	events from which exps? Prim/Second/Both
ra_targ	312.764167	Observer's specified target RA [deg]
dec_targ	-27.051278	Observer's specified target Dec [deg]
ra_nom	312.76494511609	Nominal RA [deg]
dec_nom	-27.060969495666	Nominal Dec [deg]
roll_nom	284.31229232685	Nominal Roll [deg]
revision	3	Processing version of data
ontime	19555.199927151	Sum of GTIs [s]
livetime	19307.580210946	Livetime [s]
ontime2	19555.199927151	Sum of GTIs [s]
ontime3	19551.958956897	Sum of GTIs [s]
ontime5	19555.199927151	Sum of GTIs [s]
ontime6	19551.95893696	Sum of GTIs [s]
ontime7	19555.199927151	Sum of GTIs [s]
ontime8	19551.958956897	Sum of GTIs [s]
l2events	212316	Number of level 2 events

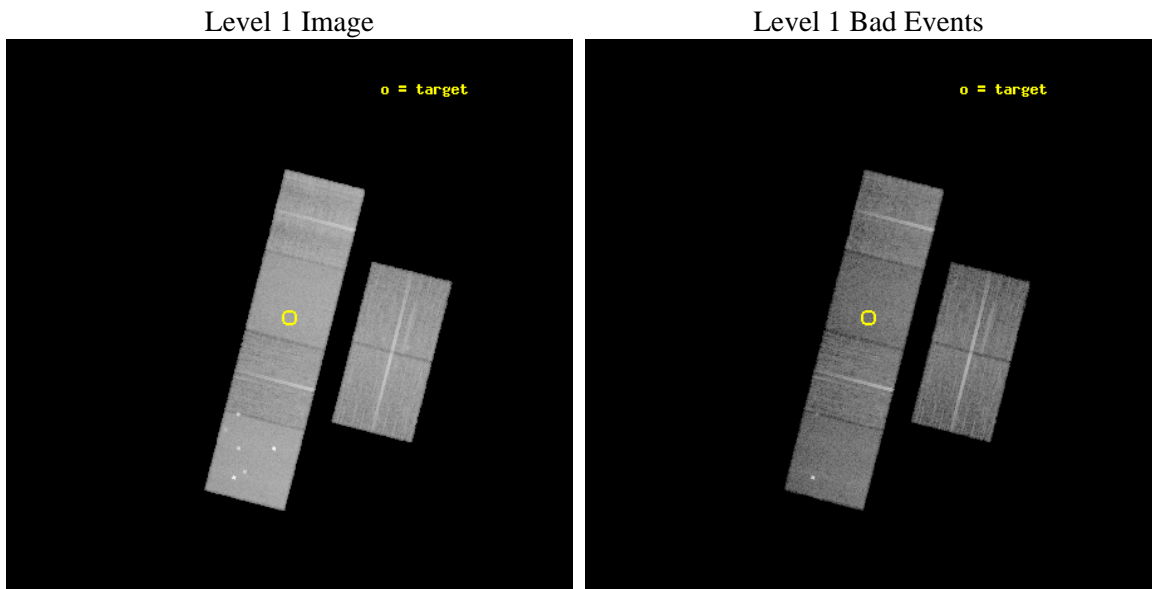




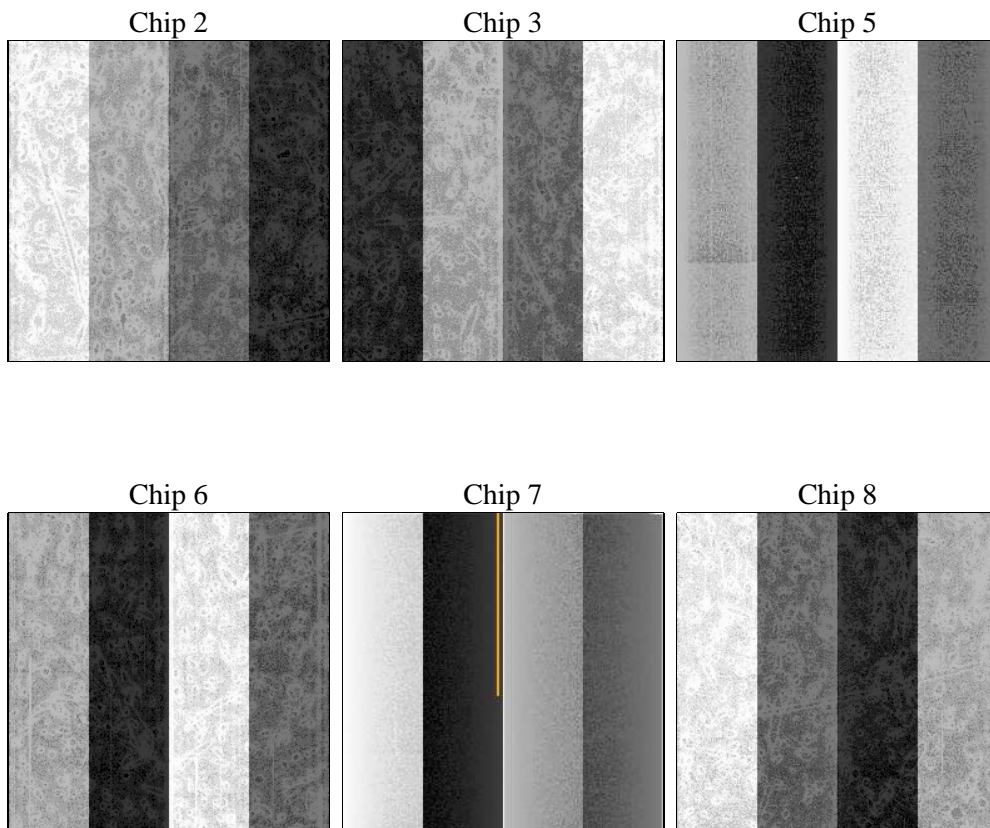
## 2 OBI

### 2.1 OBI

#### 2.1.1 Images



#### 2.1.2 Bias



### 2.1.3 Parameters

obi_num	1	Obi number	sched_exp_time	19500.000000	[s] Scheduled observation exposure time
ascdsver	8.4.5	Processing system revision	ontime	19555.199927151	Sum of GTIs [s]
caldsver	4.5.2	&#160	ontime2	19555.199927151	Sum of GTIs [s]
date	2012-10-17T12:01:33	Date and time of file creation	ontime3	19551.958956897	Sum of GTIs [s]
revision	3	Processing version of data	ontime5	19555.199927151	Sum of GTIs [s]
			ontime6	19551.95893696	Sum of GTIs [s]
			ontime7	19555.199927151	Sum of GTIs [s]
			ontime8	19551.958956897	Sum of GTIs [s]
			l1events	901546	Number of level 1 events

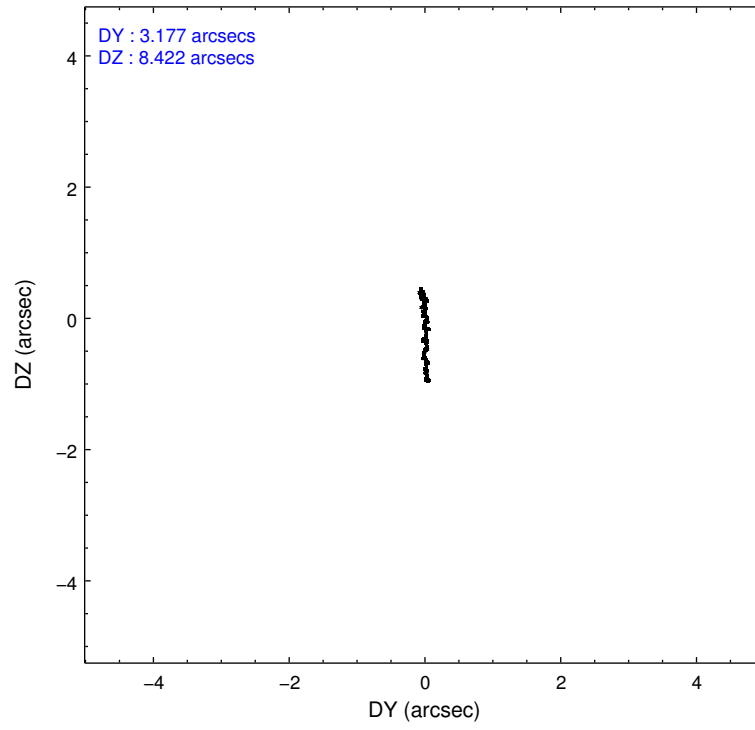
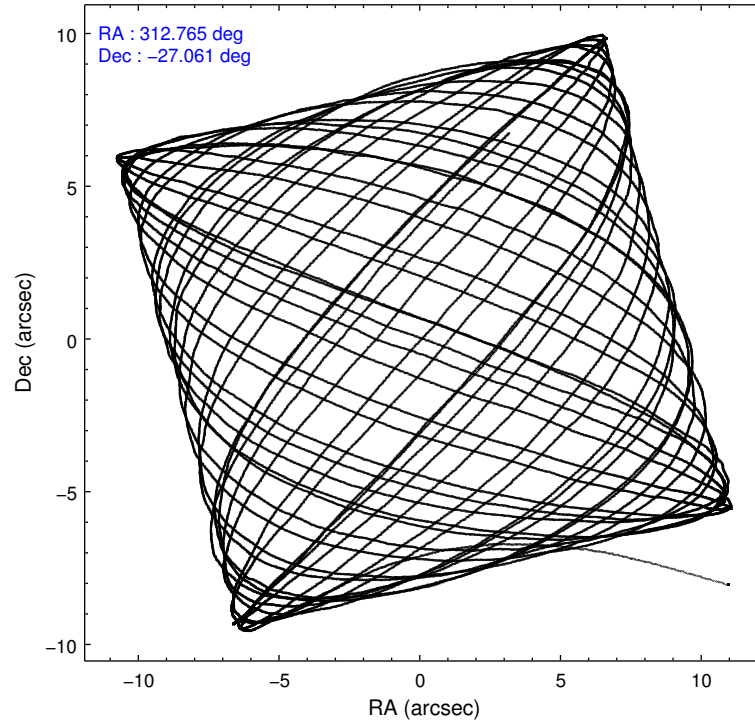
### 2.1.4 Events

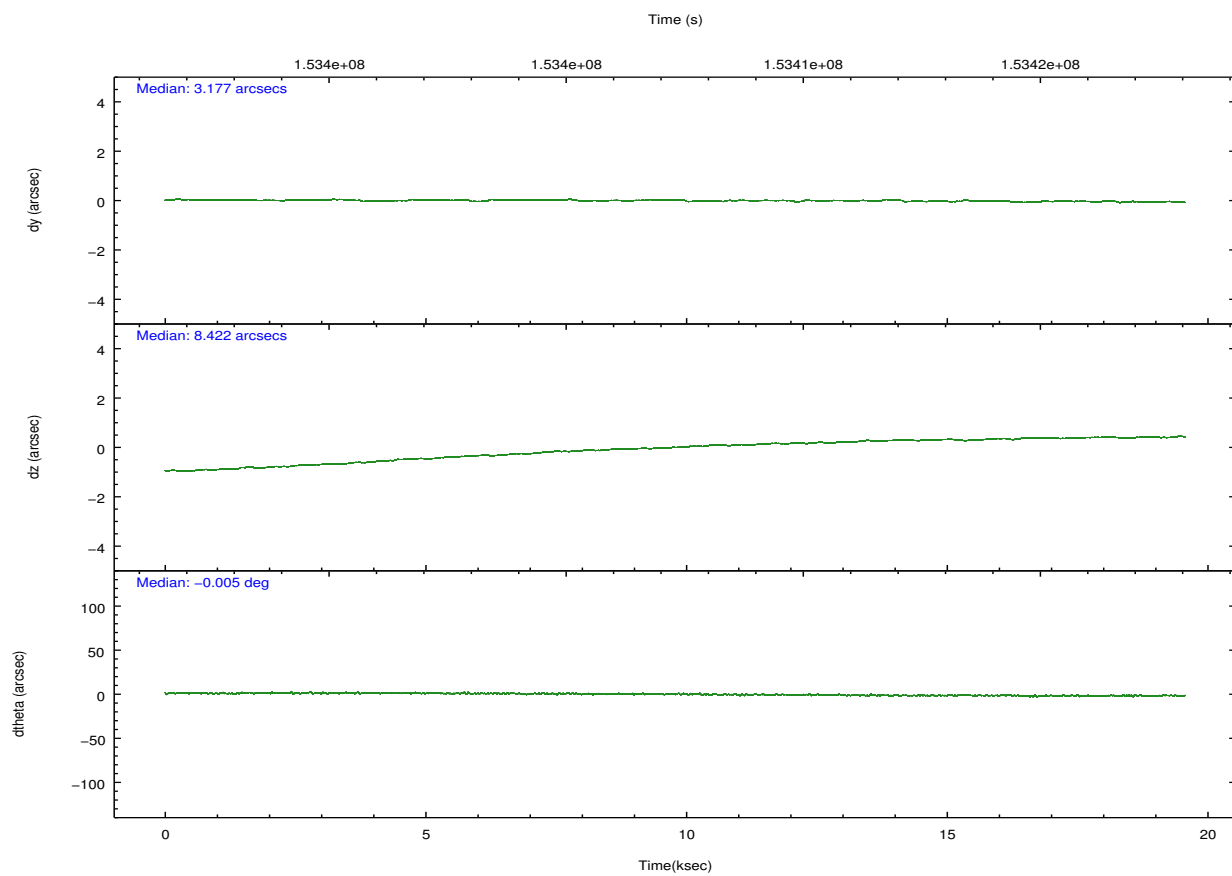
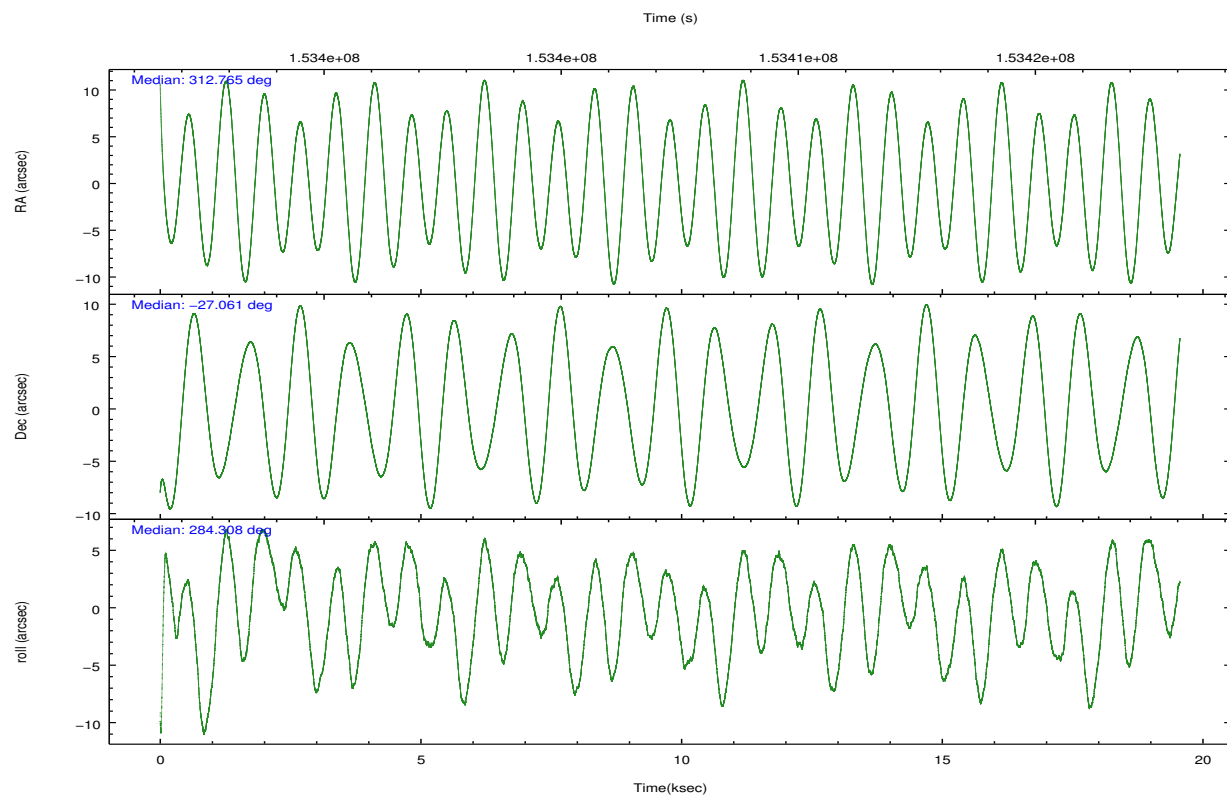
	ccd 2	ccd 3	ccd 5	ccd 6	ccd 7	ccd 8		ccd 2	ccd 3	ccd 5	ccd 6	ccd 7	ccd 8
level 1 events	127866	122180	189112	128281	163778	170329	grade 0 events	8226	7967	15253	8066	6776	16888
rejected events	110697	105453	96553	110084	92332	120739		6%	6%	8%	6%	4%	9%
rejected %	86%	86%	51%	85%	56%	70%	grade 1 events	80	88	323	65	148	139
								0%	0%	0%	0%	0%	0%
							grade 2 events	3574	3378	25922	4118	13864	9272
								2%	2%	13%	3%	8%	5%
							grade 3 events	1393	1358	4323	1468	6221	6359
								1%	1%	2%	1%	3%	3%
							grade 4 events	1432	1436	3659	1430	6170	5805
								1%	1%	1%	1%	3%	3%
							grade 5 events	4635	5076	13965	5296	14962	7091
								3%	4%	7%	4%	9%	4%
							grade 6 events	2611	2645	43712	3161	38659	11430
								2%	2%	23%	2%	23%	6%
							grade 7 events	105915	100232	81955	104677	76978	113345
								82%	82%	43%	81%	47%	66%

## 2.2 Compared Parameters

Parameter	Planned	Actual	Parameter	Planned	Actual
Instrument	ACIS	ACIS	Obspar format version number	7	7
Detector	ACIS-235678	ACIS-235678	Obspar file type	PREDICTED	ACTUAL
Grating	NONE	NONE	Obspar update status	NONE	UPDATED
Data mode	FAINT	FAINT	Number of optional ACIS chips dropped	0	0
Observation mode	POINTING	POINTING	On-chip summing requested	N	N
[deg] Pointing RA	312.743316	312.7649451160939	Subarray requested	NONE	NONE
[deg] Pointing Dec	-27.041698	-27.06096949566579	Alternating exposures requested	N	N
[deg] Pointing Roll	284.145843	284.3122923268464	[s] Primary exposure time	0.000000	3.2
[mm] SIM focus pos	-0.684267	-0.6828225247311905			
[mm] SIM defocus	0	0.001444936568705701			
[mm] SIM translation stage pos	-190.132523	-190.1400660498719			
[mm] SIM translation stage offset	0	0.00754346686406393			
[s] Observation start time (MET)	153397578.184000	153396581.01008			
Observation start date	2002-11-11T10:25:14	2002-11-11T10:09:41			
[s] Observation end time (MET)	153417078.184000	153417770.32346			
Observation end date	2002-11-11T15:50:14	2002-11-11T16:02:50			
Read mode	TIMED	TIMED			

## 2.3 Aspect



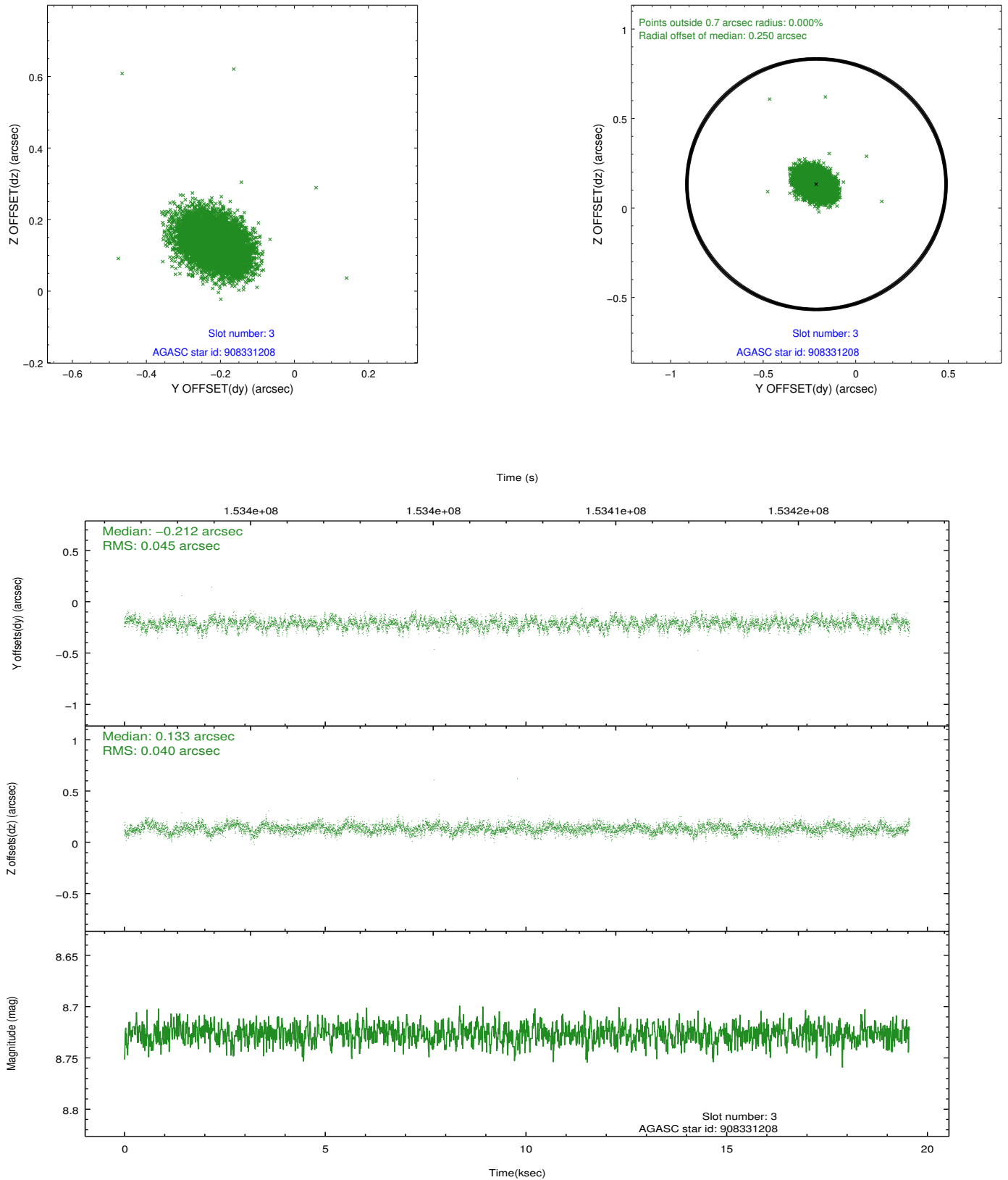


### Slot Statistics

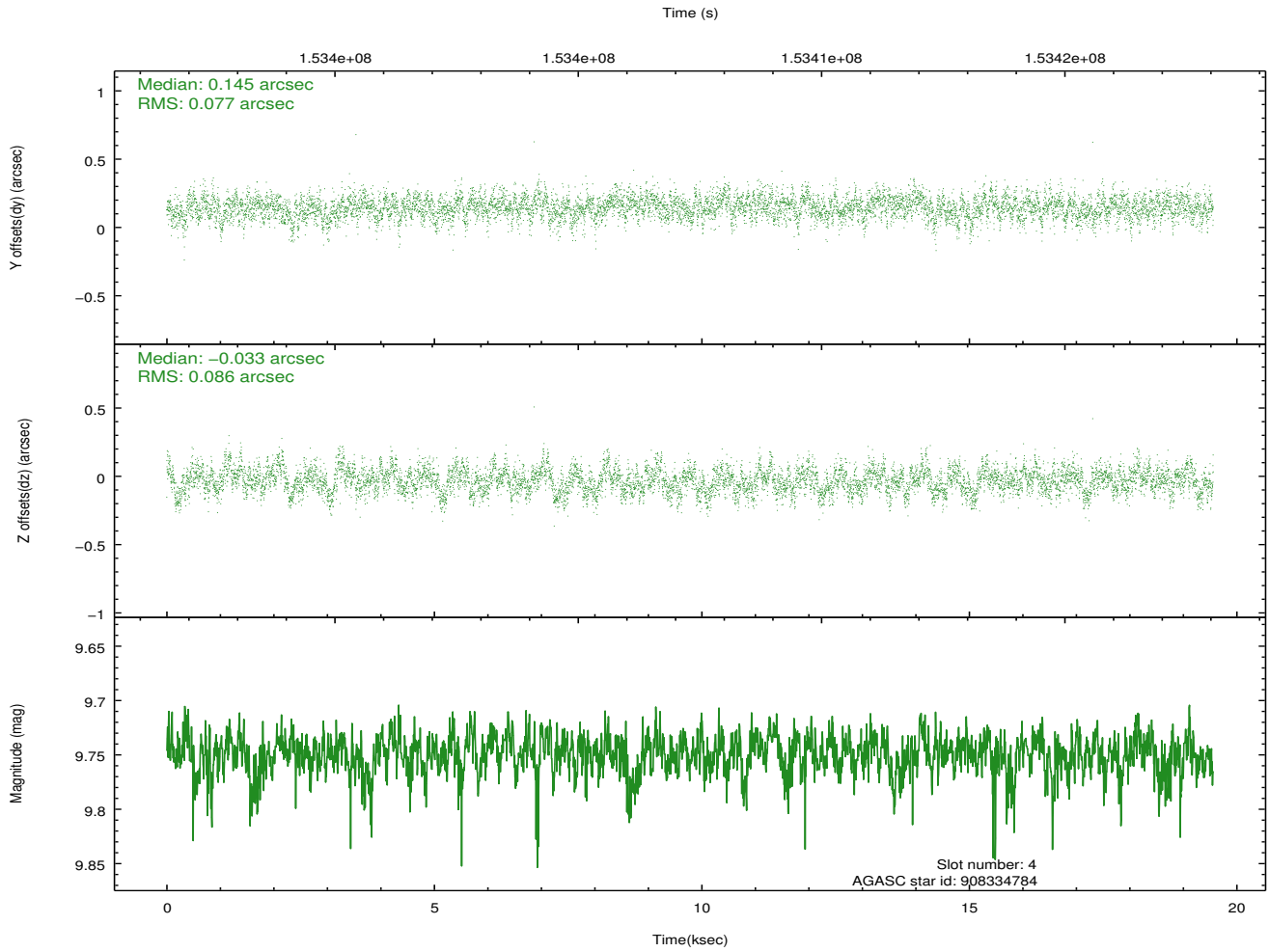
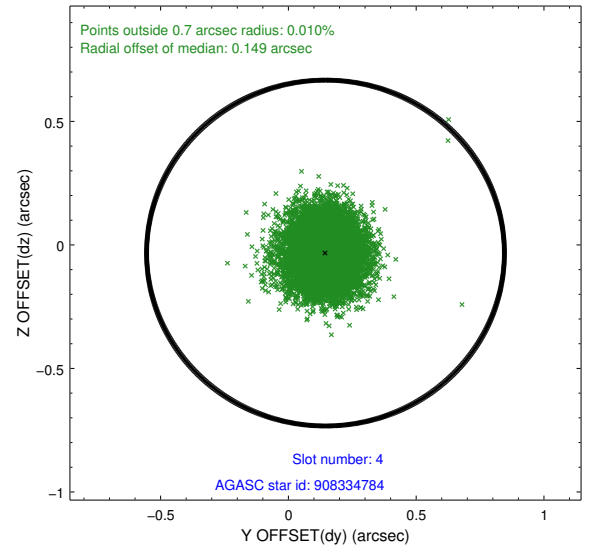
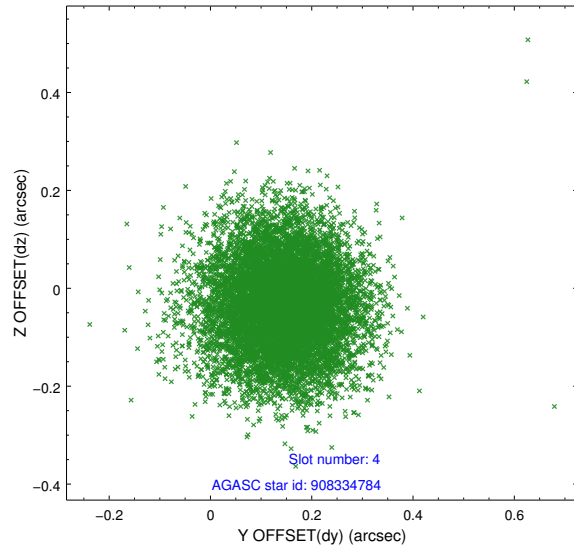
slot	status	id	mag	n_pts	med_dy	med_dz	dr1	dr2	ra	dec	mean_y	mean_z
0	FID	ACIS-S-1	7.19	4771	0.036	-0.001	0.021	0.041	0.000000	0.000000	940.24	-1725.17
1	FID	ACIS-S-5	7.24	4772	-0.037	0.042	0.009	0.014	0.000000	0.000000	-1808.70	172.27
2	FID	ACIS-S-6	7.36	4770	-0.019	-0.028	0.015	0.036	0.000000	0.000000	405.55	816.36
3	GUIDE	908331208	8.73	9540	-0.212	0.133	0.063	0.105	312.844396	-26.779792	-834.95	545.63
4	GUIDE	908334784	9.75	9525	0.145	-0.033	0.123	0.199	312.595222	-27.683804	2126.63	-1022.51
5	GUIDE	908335408	9.82	9536	0.068	-0.019	0.101	0.168	312.406524	-27.474218	1248.88	-1423.92
6	GUIDE	908330440	8.91	9539	-0.077	-0.053	0.075	0.117	312.139064	-26.993928	-635.71	-1838.75
7	GUIDE	908334944	6.91	9541	0.073	-0.028	0.069	0.104	312.890039	-27.244769	823.97	276.64

## 2.4 Star Slots

### 2.4.1 Slot 3

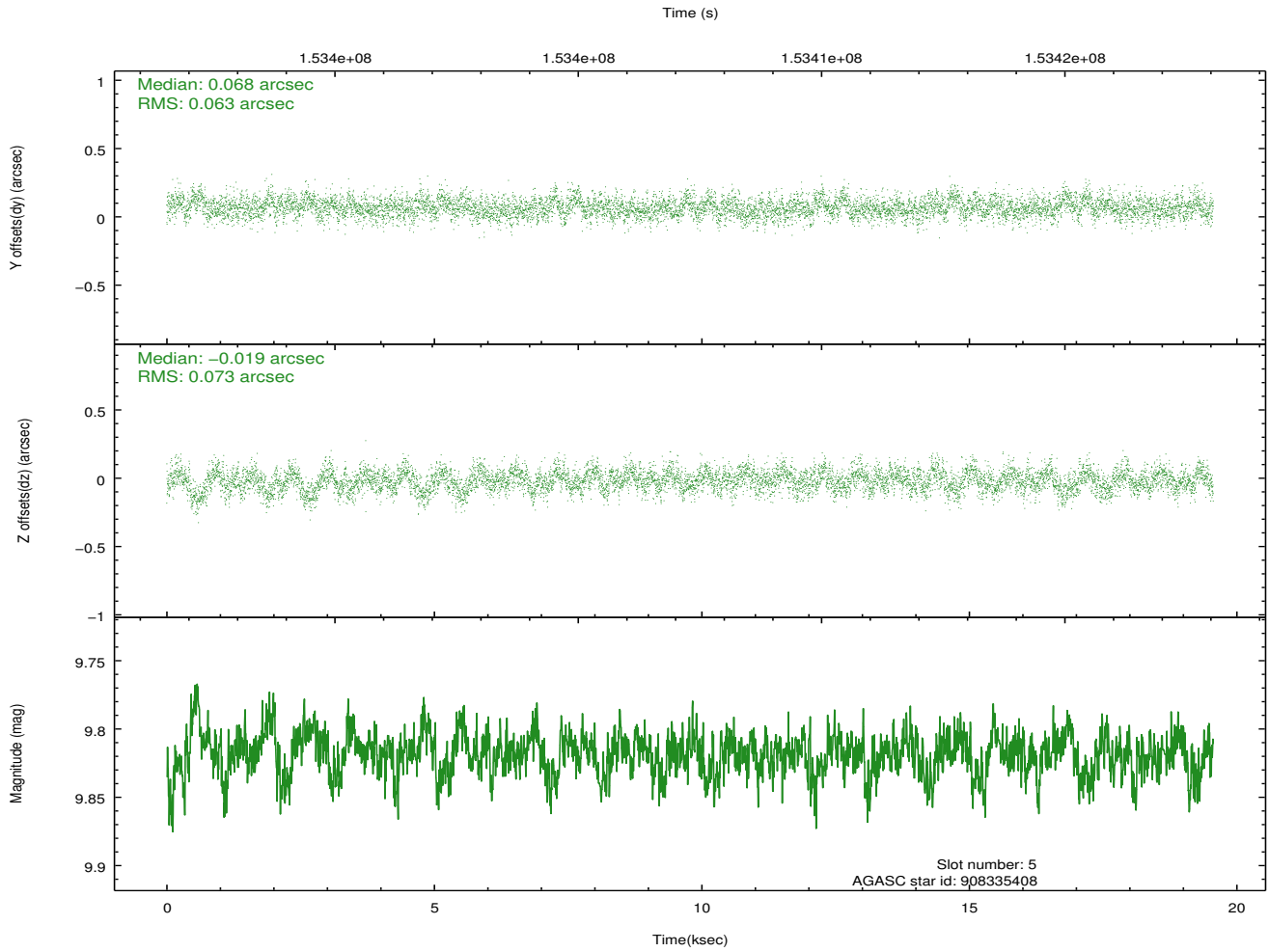
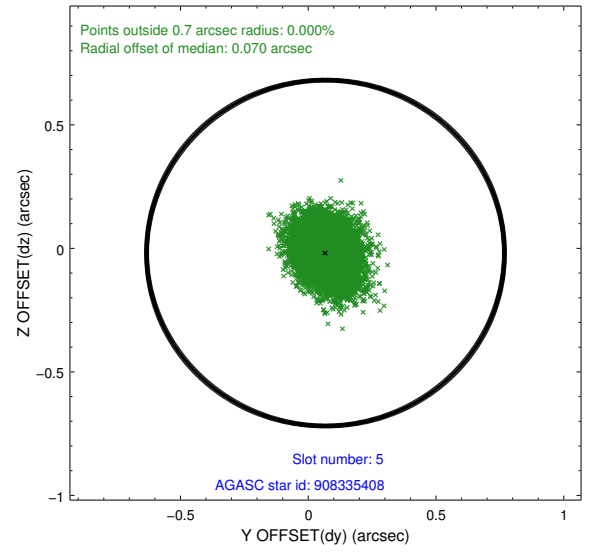
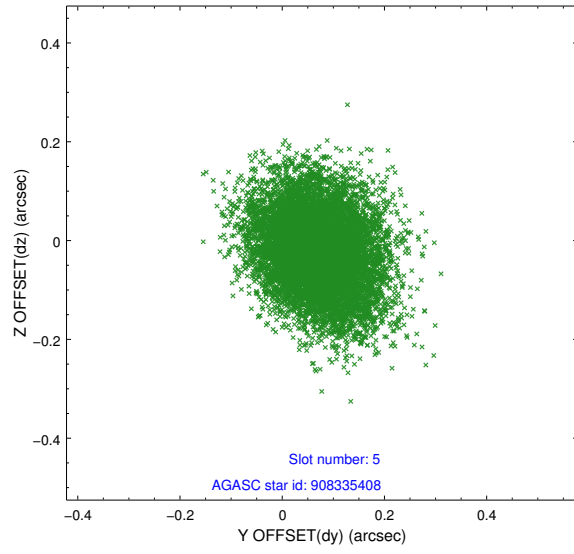


## 2.4.2 Slot 4

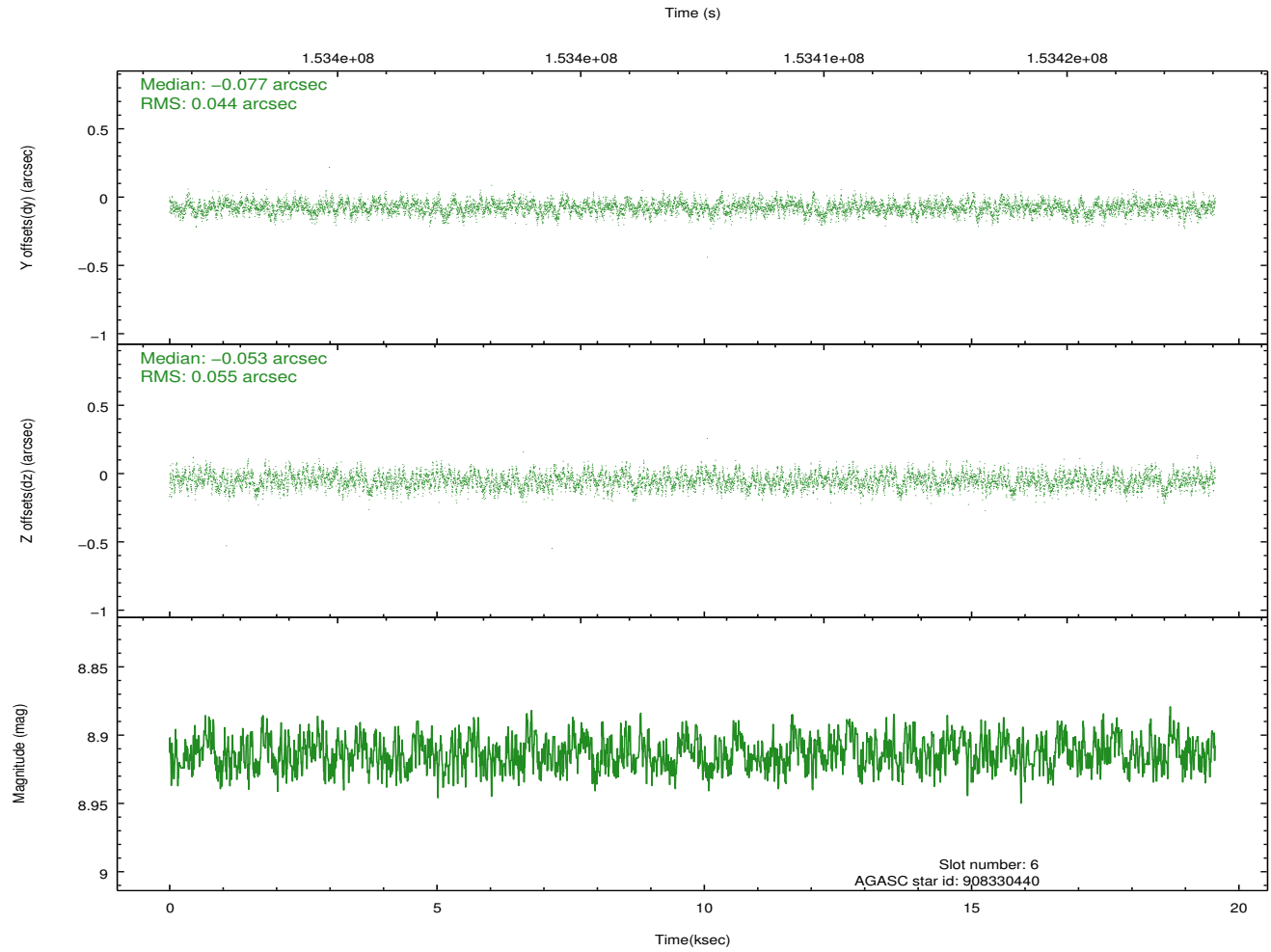
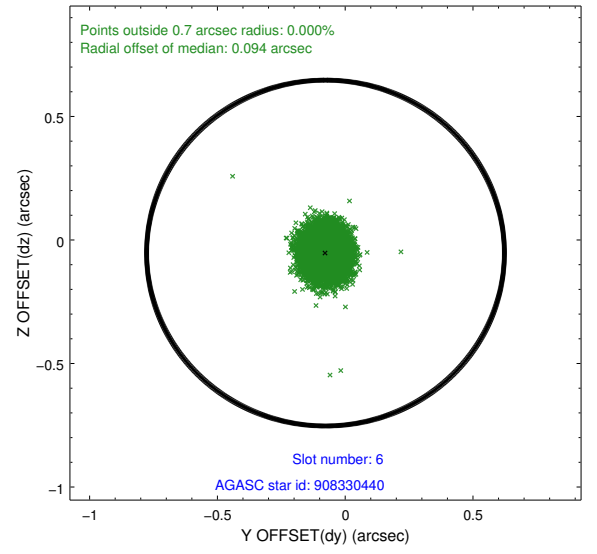
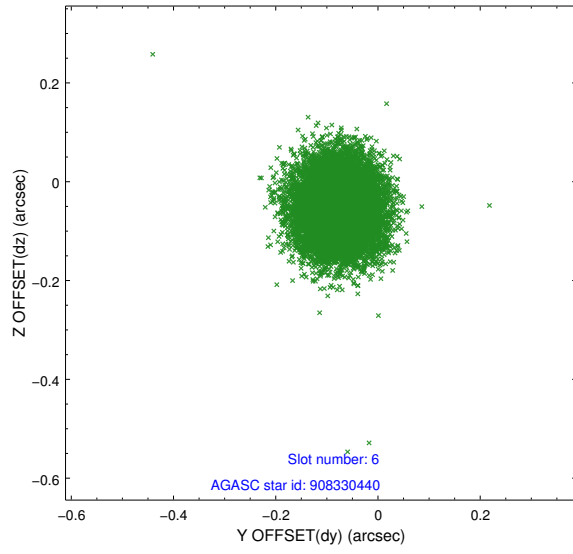




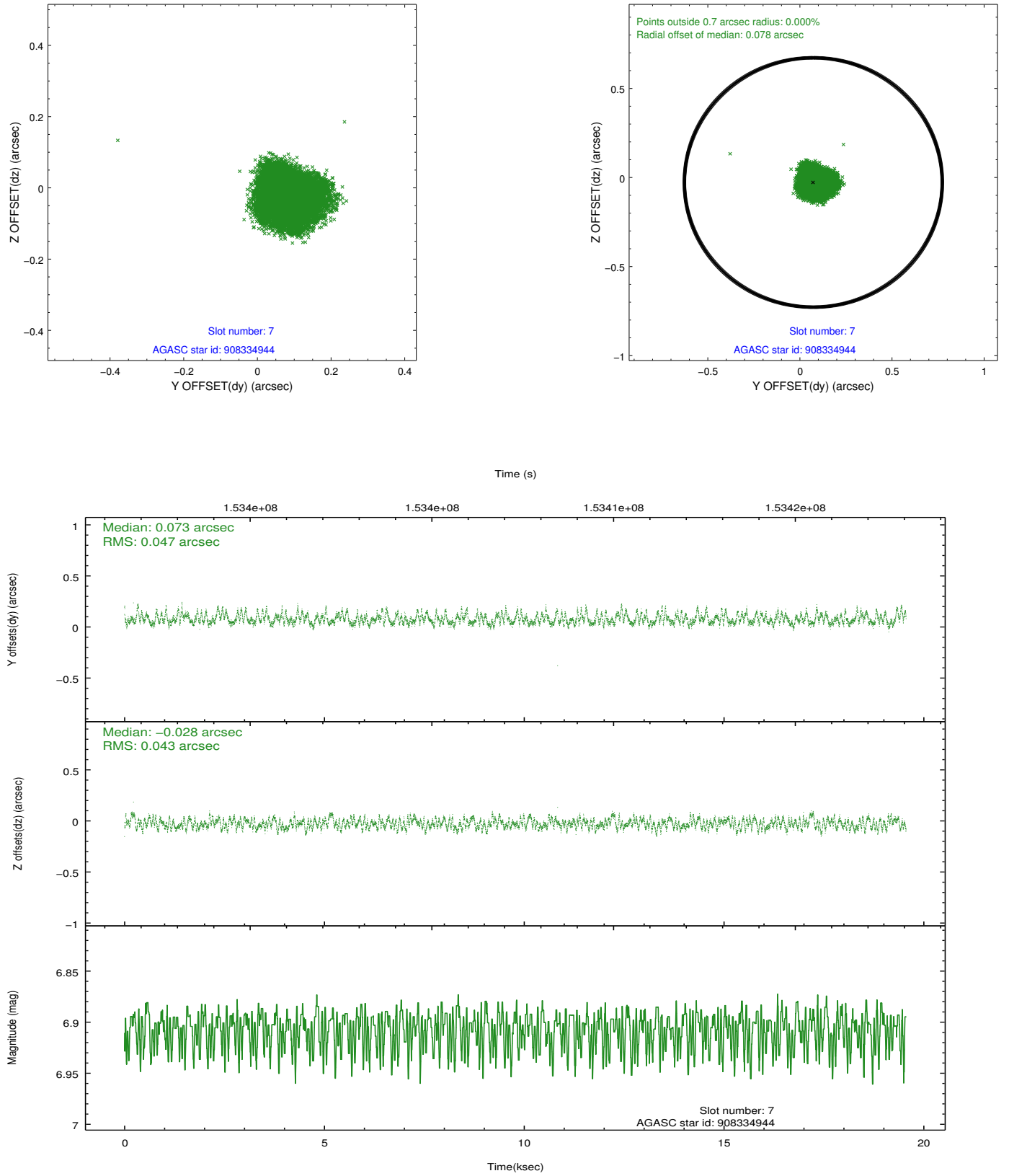
### 2.4.3 Slot 5



## 2.4.4 Slot 6

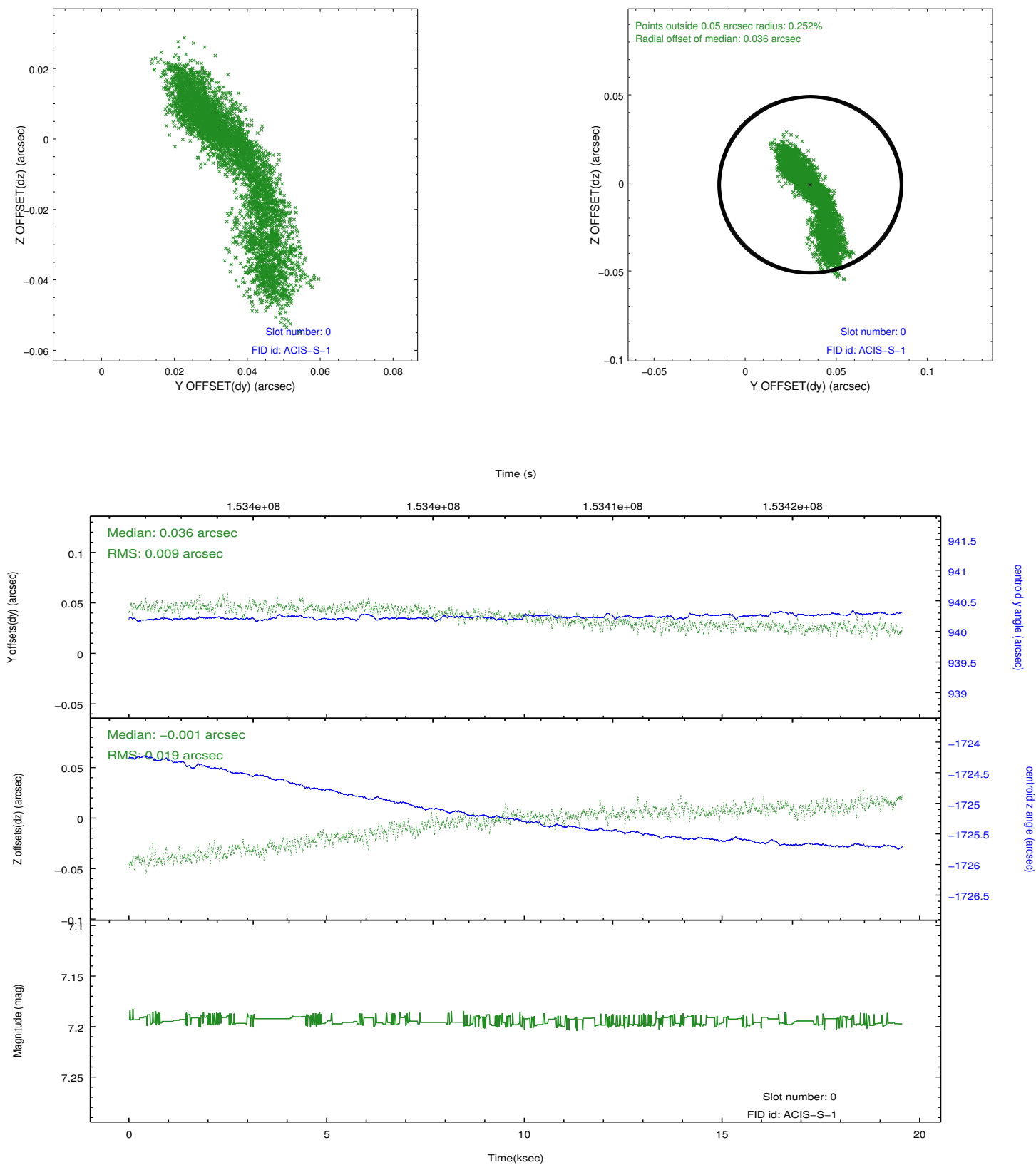


## 2.4.5 Slot 7

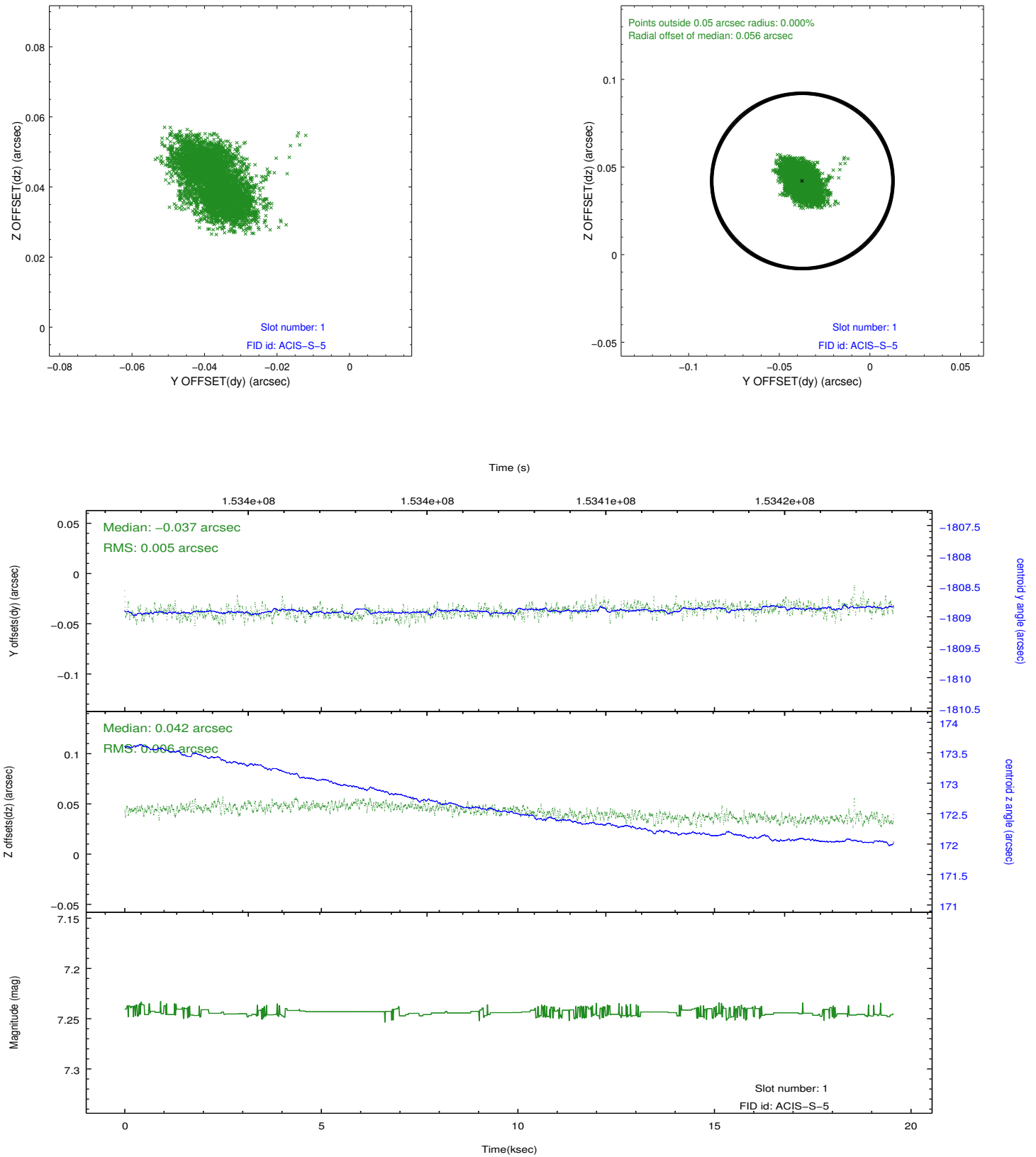


## 2.5 FID Slots

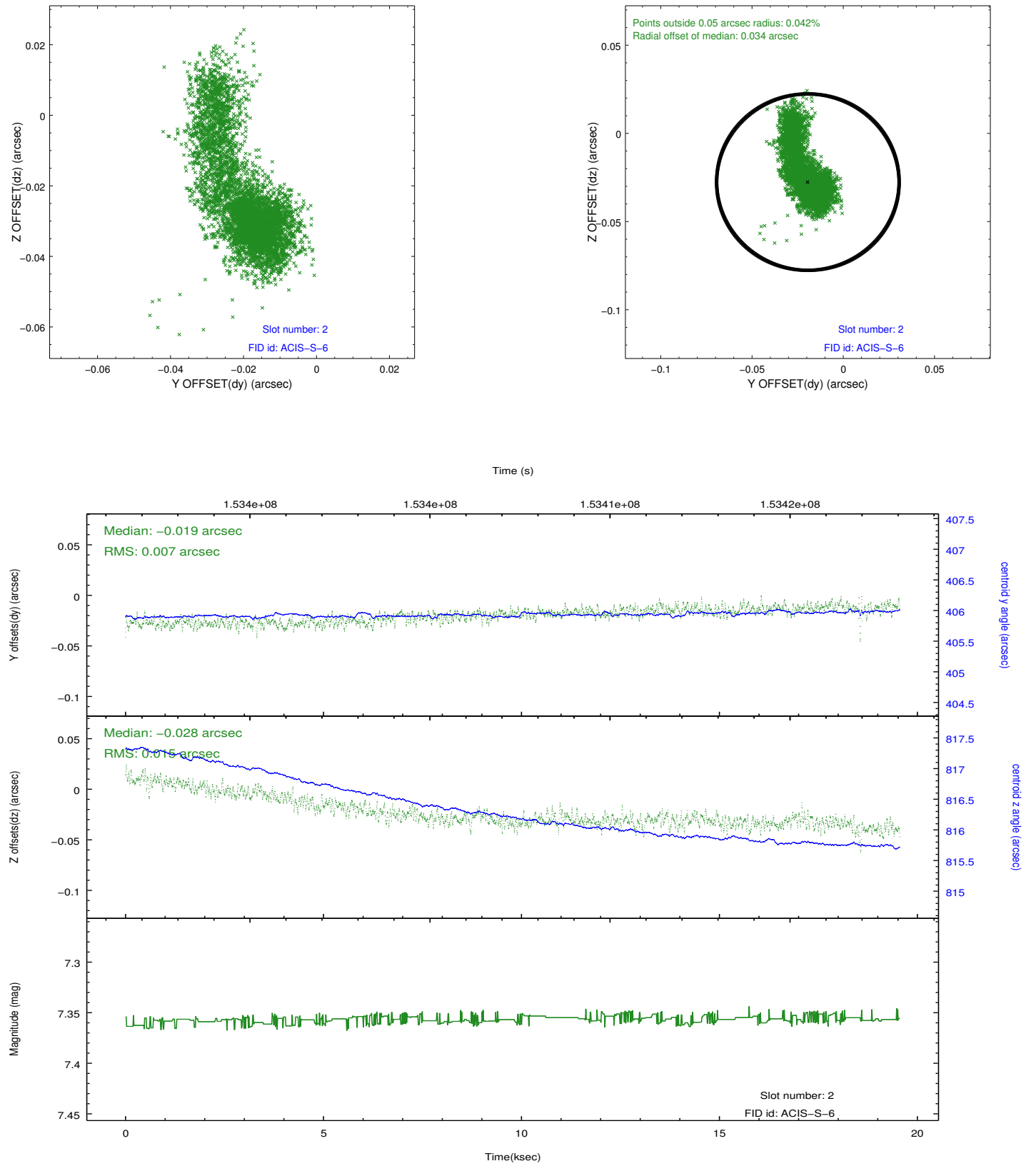
### 2.5.1 Slot 0



## 2.5.2 Slot 1



### 2.5.3 Slot 2



## A Summary

### A.1 Status

V&V Scientist	Jen Lauer
V&V Date (YYYY-MM-DD)	2012.10.26
V&V Edition	1
V&V Disposition and Status	OK
V&V Charge Time	19.555

### A.2 Comments