

V&V Reference Report

L2 ASCDS Version : 7.6.9

Observation 3059 - L2 Version 001
Chandra X-Ray Center

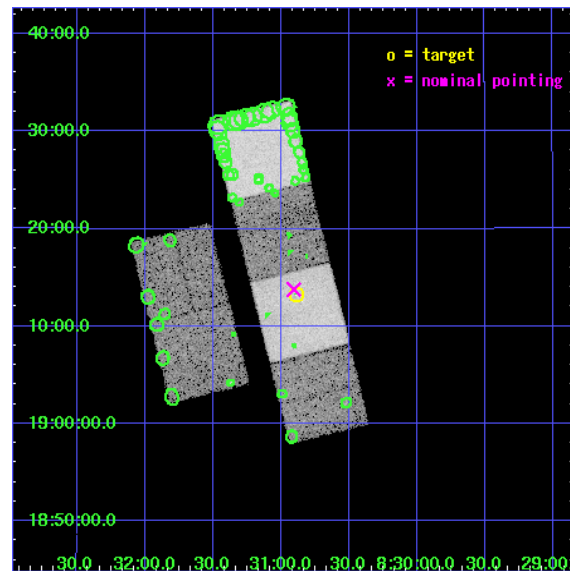
L2 Processing Date : Oct 11 2006

Contents

1	Front	2
2	OBI	3
2.1	OBI	3
2.1.1	Images	3
2.1.2	Bias	3
2.1.3	Parameters	4
2.1.4	Events	4
2.2	Compared Parameters	5
2.3	Aspect	6
2.4	Star Slots	9
2.4.1	Slot 3	9
2.4.2	Slot 4	10
2.4.3	Slot 5	11
2.4.4	Slot 6	12
2.4.5	Slot 7	13
2.5	FID Slots	14
2.5.1	Slot 0	14
2.5.2	Slot 1	15
2.5.3	Slot 2	16
3	Point Sources	17
A	Summary	18
A.1	Status	18
A.2	Comments	18

1 Front

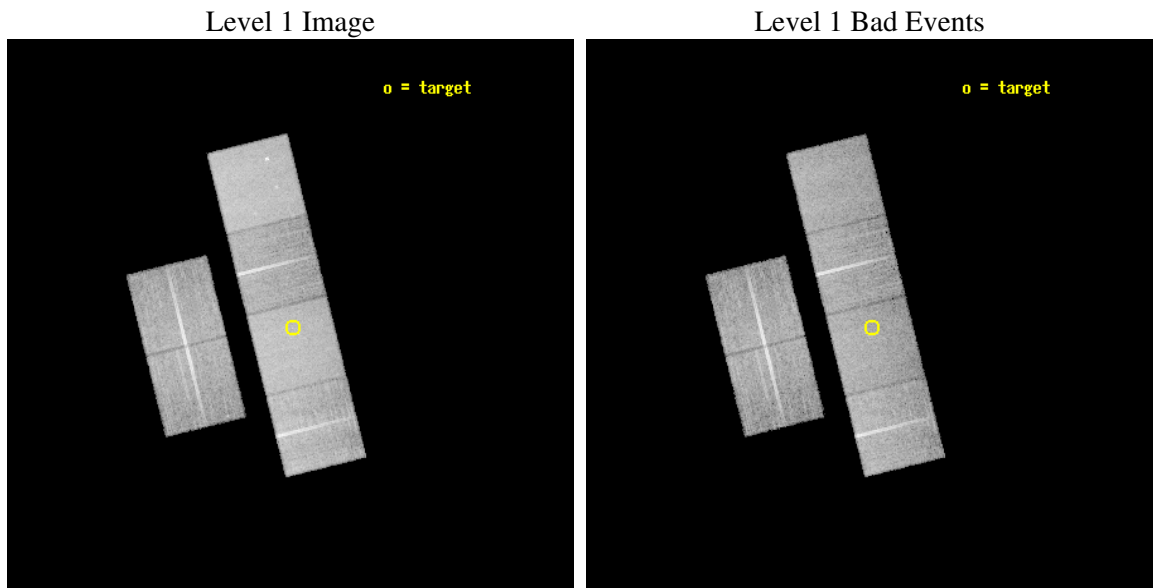
seq_num	700498
obs_id	3059
title	X-RAY STUDIES OF HIGH REDSHIFT RADIO GALAXIES
observer	Dr. Chris Carilli
object	0828+193
dtcycle	0
cycle	P
ra_targ	127.7225
dec_targ	19.221
ra_nom	127.72665833055
dec_nom	19.229809256075
roll_nom	76.089633059325
revision	2
ontime	19223.161259592
livetime	18979.746016925
ontime2	19223.120219588
ontime3	19216.802399278
ontime5	19223.202299595
ontime6	19223.243339598
ontime7	19223.161259592
ontime8	19223.325419575
l2events	183969



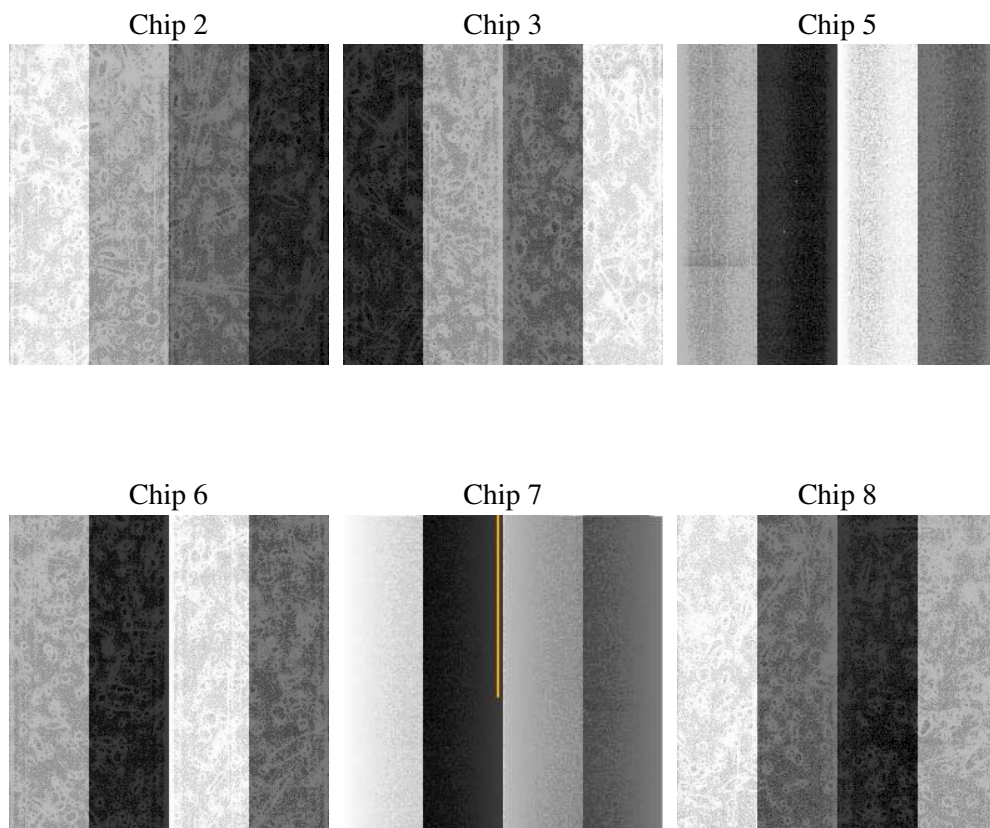
2 OBI

2.1 OBI

2.1.1 Images



2.1.2 Bias



2.1.3 Parameters

obi_num	0
ascdsver	7.6.9
caldsver	3.2.3
date	2006-10-12T01:56:14
revision	2

sched_exp_time	19300.000000
ontime	19232.10120973
ontime2	19232.10120973
ontime3	19225.619229406
ontime5	19232.10120973
ontime6	19232.10120973
ontime7	19232.10120973
ontime8	19232.10120973
l1events	803329

2.1.4 Events

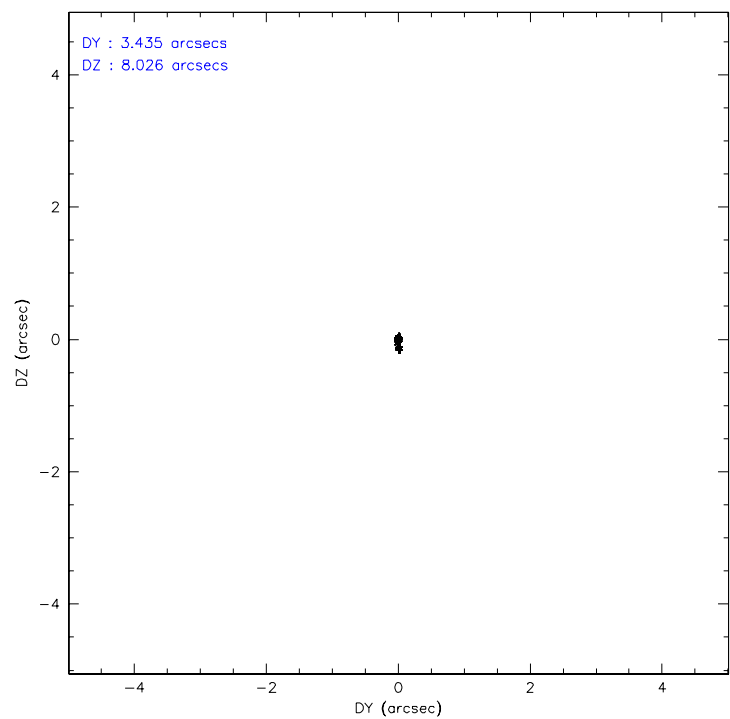
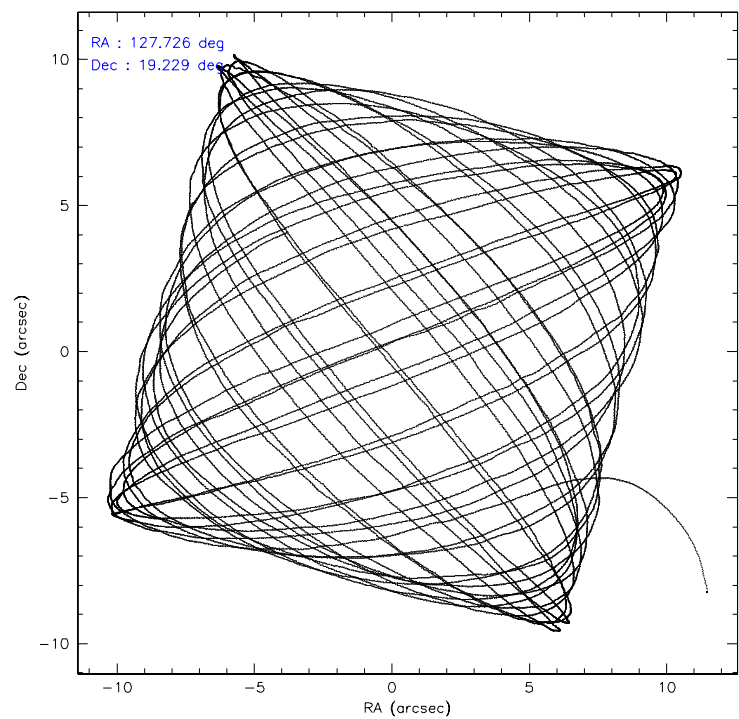
	ccd 2	ccd 3	ccd 5	ccd 6	ccd 7	ccd 8
level 1 events	113069	108903	170231	112553	156079	142494
rejected events	99925	95733	93303	98436	93713	112774
rejected %	88%	87%	54%	87%	60%	79%

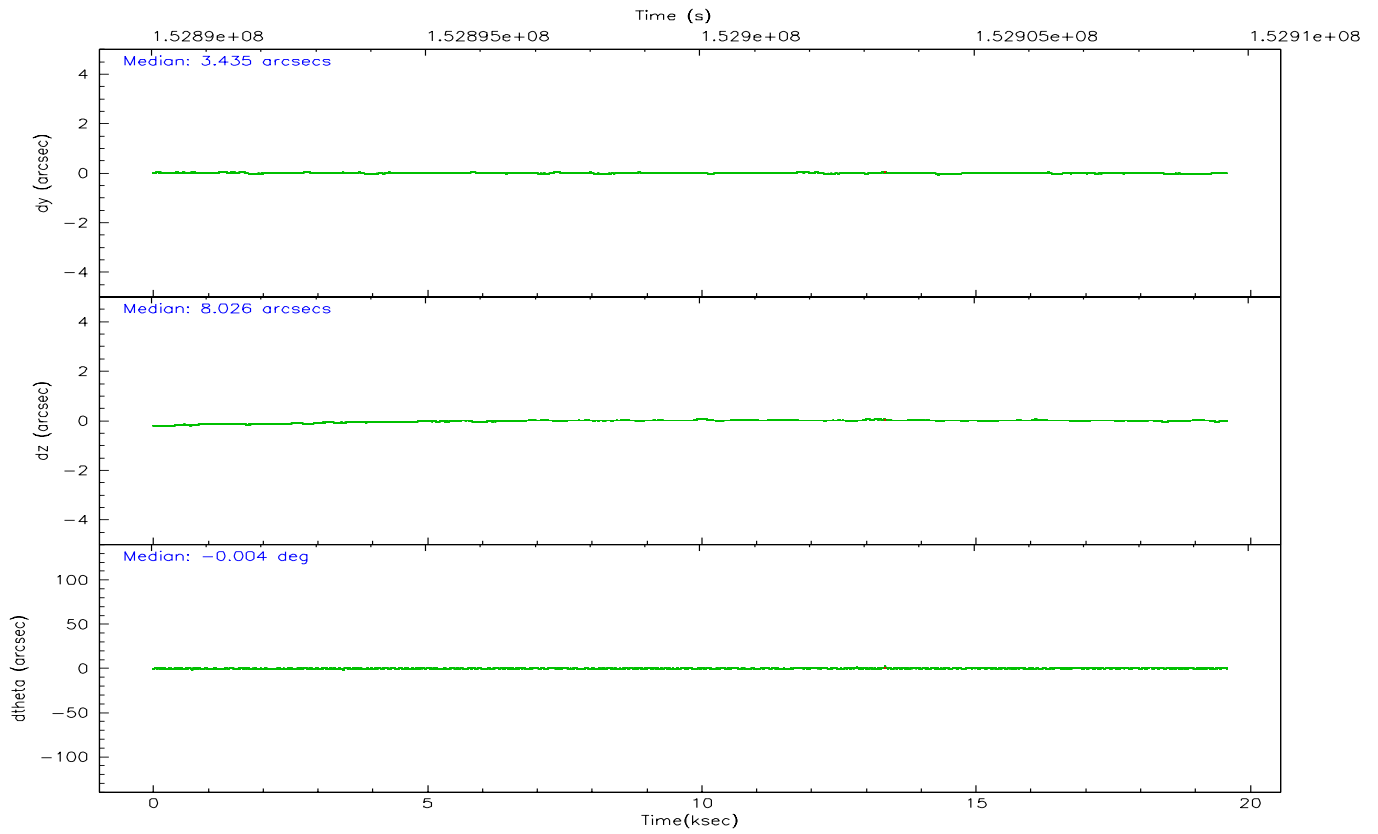
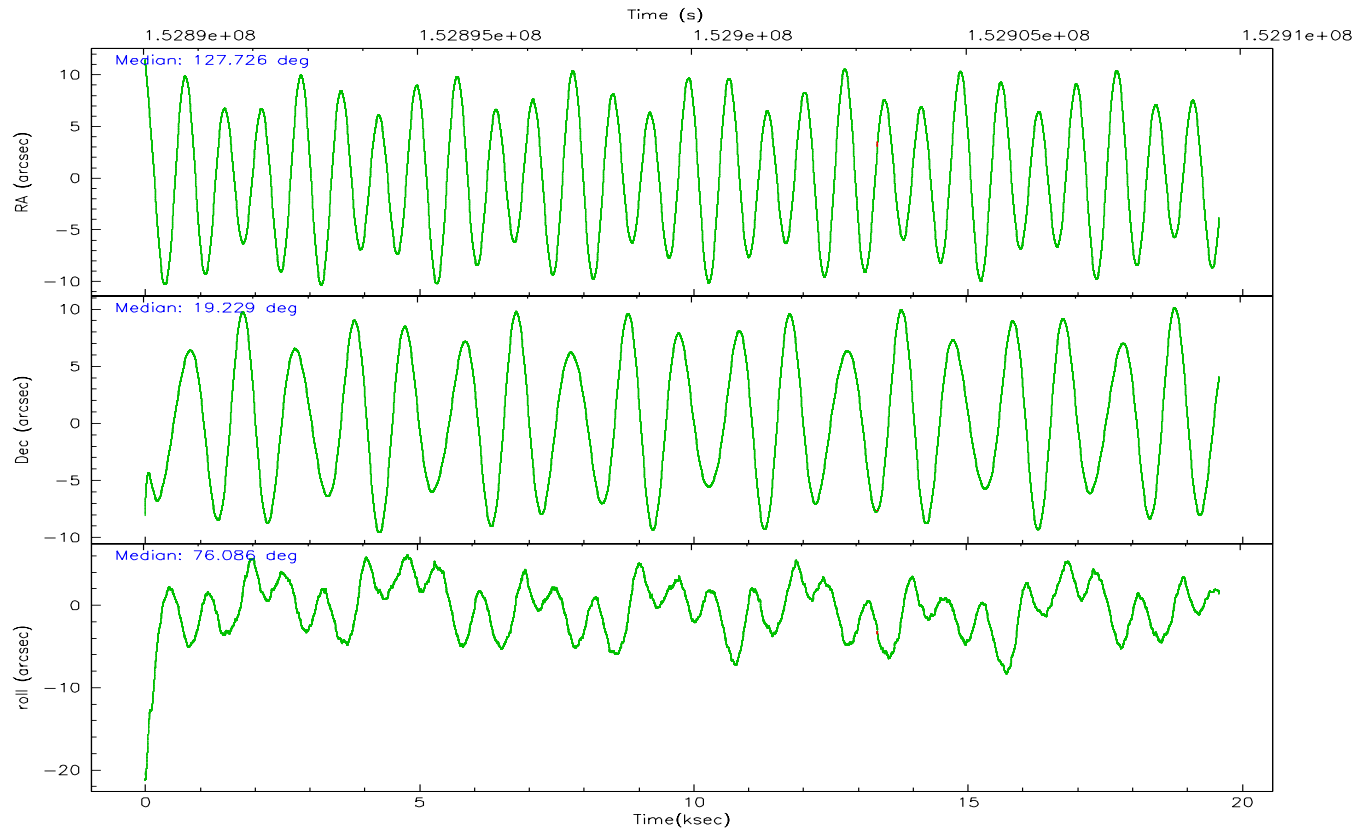
	ccd 2	ccd 3	ccd 5	ccd 6	ccd 7	ccd 8
grade 0 events	5875	5764	4744	5729	3963	9541
	5%	5%	2%	5%	2%	6%
grade 1 events	81	61	169	55	88	107
	0%	0%	0%	0%	0%	0%
grade 2 events	2507	2480	23699	2931	14978	6333
	2%	2%	13%	2%	9%	4%
grade 3 events	1318	1322	1908	1375	3160	3216
	1%	1%	1%	1%	2%	2%
grade 4 events	1283	1311	1874	1351	3169	2894
	1%	1%	1%	1%	2%	2%
grade 5 events	4388	4692	7898	4984	9703	6617
	3%	4%	4%	4%	6%	4%
grade 6 events	2166	2302	44750	2734	37127	7774
	1%	2%	26%	2%	23%	5%
grade 7 events	95451	90971	85189	93394	83891	106012
	84%	83%	50%	82%	53%	74%

2.2 Compared Parameters

Parameter	Planned	Actual	Parameter	Planned	Actual
Instrument	ACIS	ACIS	Obspar format version number	6	6
Detector	ACIS-235678	ACIS-235678	Obspar file type	PREDICTED	ACTUAL
Grating	NONE	NONE	Obspar update status	NONE	UPDATED
Data mode	FAINT	FAINT	Number of optional ACIS chips dropped	0	0
Observation mode	POINTING	POINTING	On-chip summing requested	N	N
Pointing RA	127.735033	127.7266583305545	Subarray requested	NONE	NONE
Pointing Dec	19.203769	19.22980925607461	Alternating exposures requested	N	N
Pointing Roll	75.930253	76.08963305932517	Primary exposure time	0.000000	3.2
SIM focus pos (mm)	-0.684267	-0.6828225247311905			
SIM defocus (mm)	0	0.001444936568705701			
SIM translation stage pos (mm)	-190.132523	-190.1400660498719			
SIM translation stage offset (mm)	0	0.00754346686406393			
Observation start time	152890311.184000	152889291.57647			
Observation start date	2002-11-05T13:30:47	2002-11-05T13:14:51			
Observation end time	152909611.184000	152910271.27735			
Observation end date	2002-11-05T18:52:27	2002-11-05T19:04:31			
Read mode	TIMED	TIMED			

2.3 Aspect



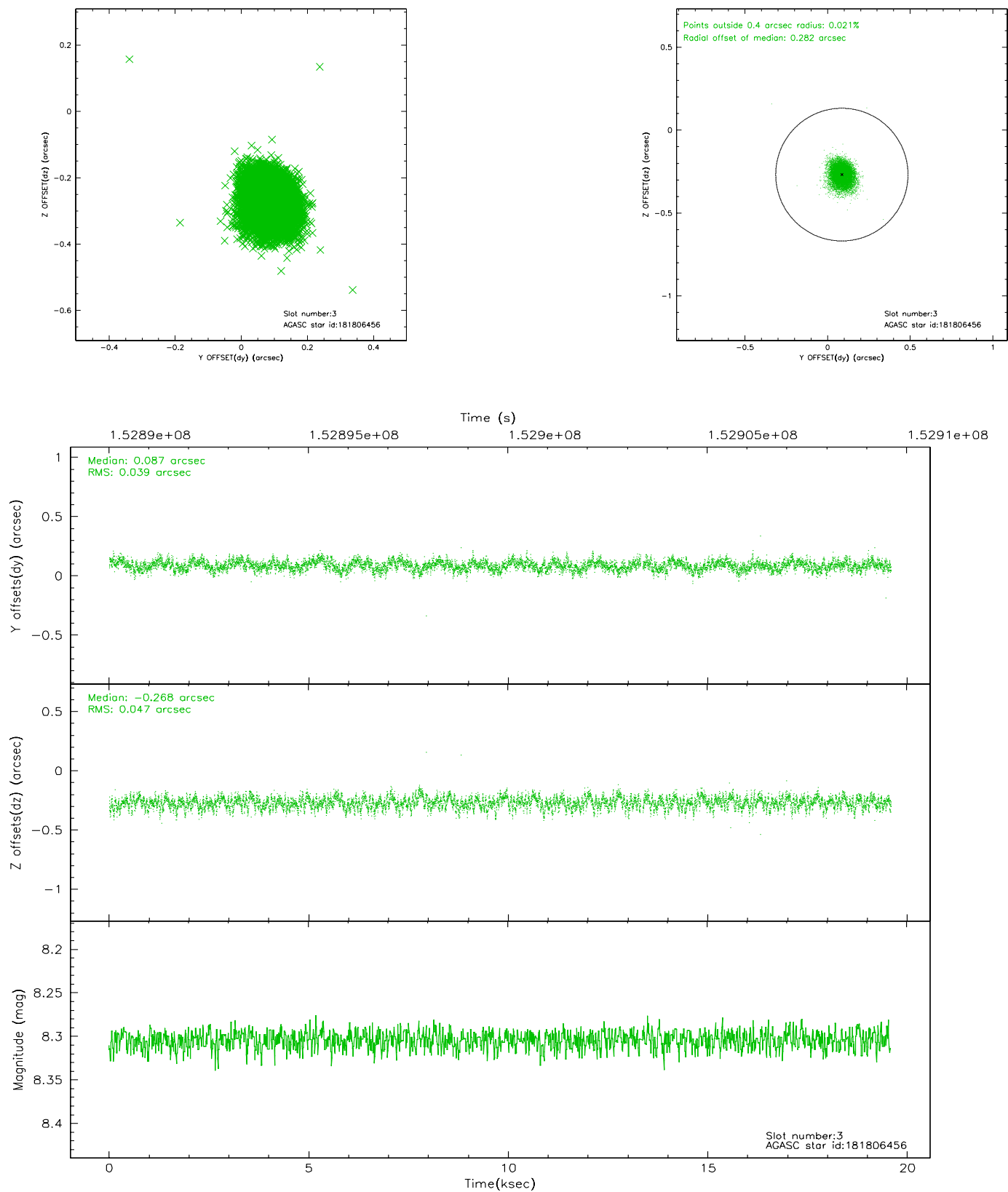


Slot Statistics

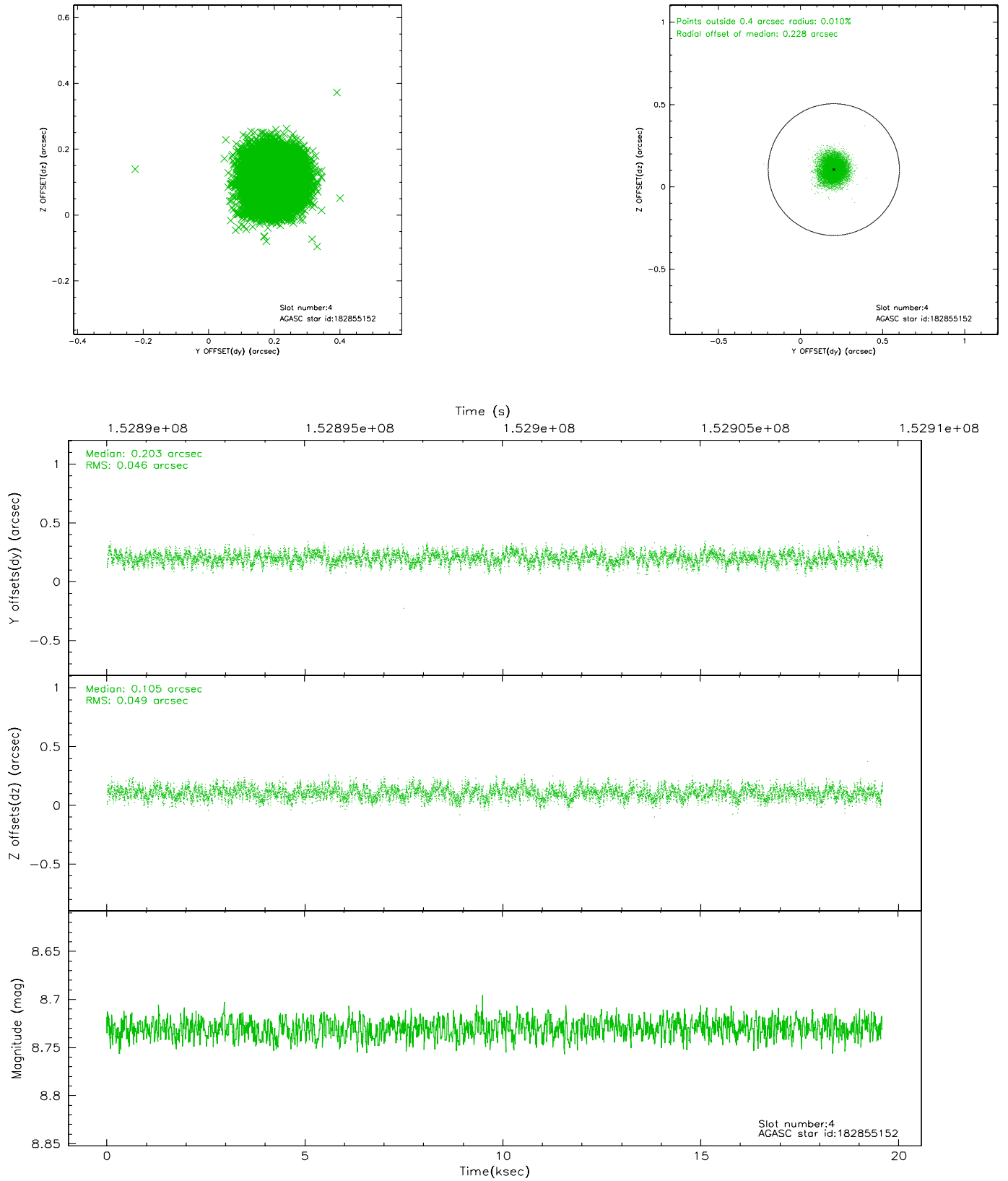
slot	status	id	mag	n_pts	med_dy	med_dz	dr1	dr2	ra	dec	mean_y	mean_z
0	FID	ACIS-S-1	7.19	4768	0.029	0.027	0.007	0.012	0.000000	0.000000	939.93	-1724.82
1	FID	ACIS-S-4	7.20	4767	-0.059	-0.028	0.006	0.010	0.000000	0.000000	2157.40	179.06
2	FID	ACIS-S-5	7.24	4766	0.004	0.014	0.005	0.009	0.000000	0.000000	-1808.68	172.99
3	GUIDE	181806456	8.30	9530	0.087	-0.268	0.064	0.105	127.629228	18.942971	-996.38	120.35
4	GUIDE	182855152	8.73	9527	0.203	0.105	0.072	0.113	128.075990	18.603787	-1809.34	-1653.84
5	GUIDE	181275496	9.65	9523	0.185	-0.021	0.087	0.143	127.684205	18.680730	-1866.78	-290.53
6	GUIDE	182862704	9.35	9527	-0.179	0.025	0.081	0.129	128.030143	19.574387	1539.78	-646.88
7	GUIDE	182859448	9.35	9519	-0.295	0.160	0.119	0.200	128.562655	19.537479	1856.28	-2430.36

2.4 Star Slots

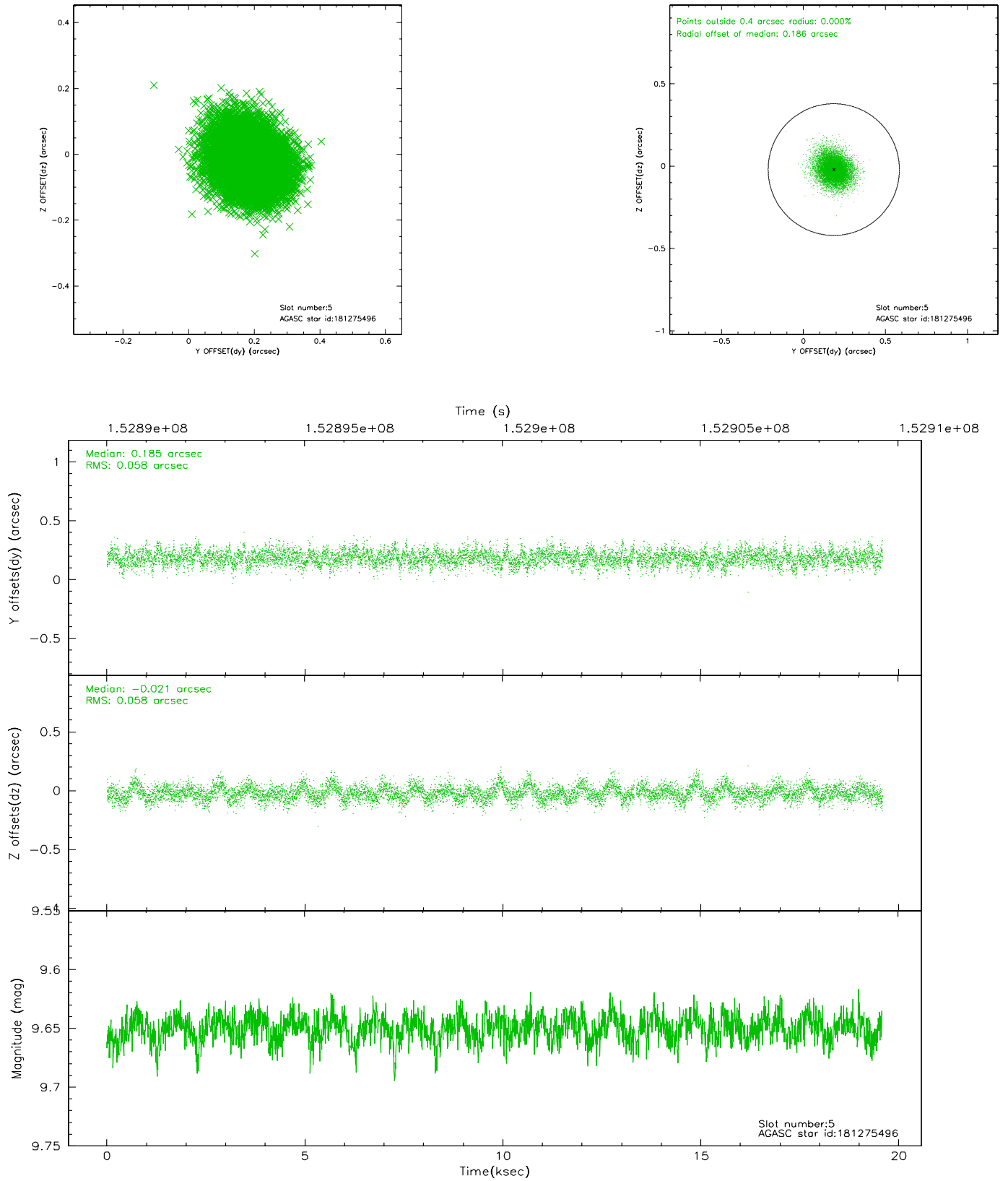
2.4.1 Slot 3



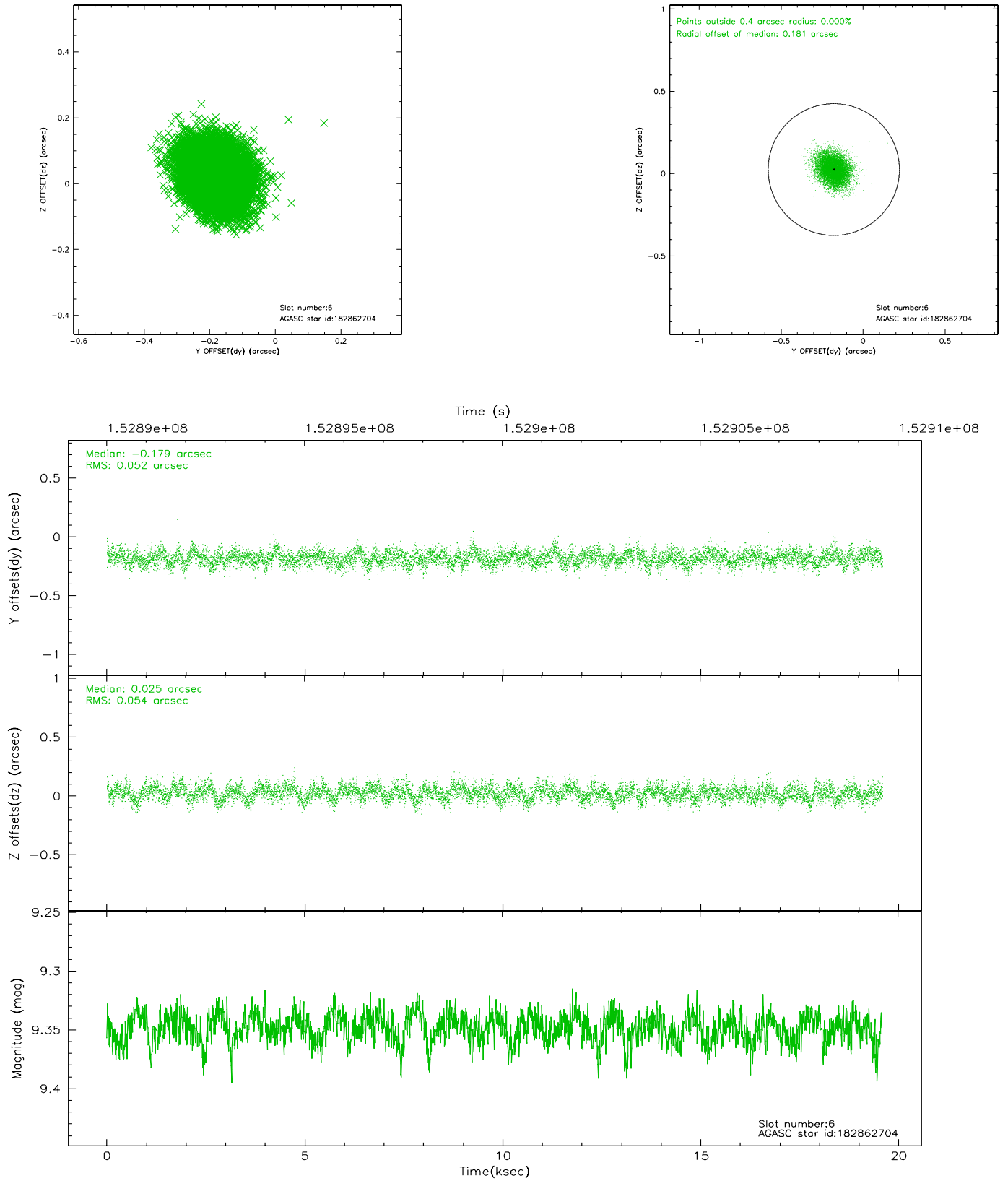
2.4.2 Slot 4



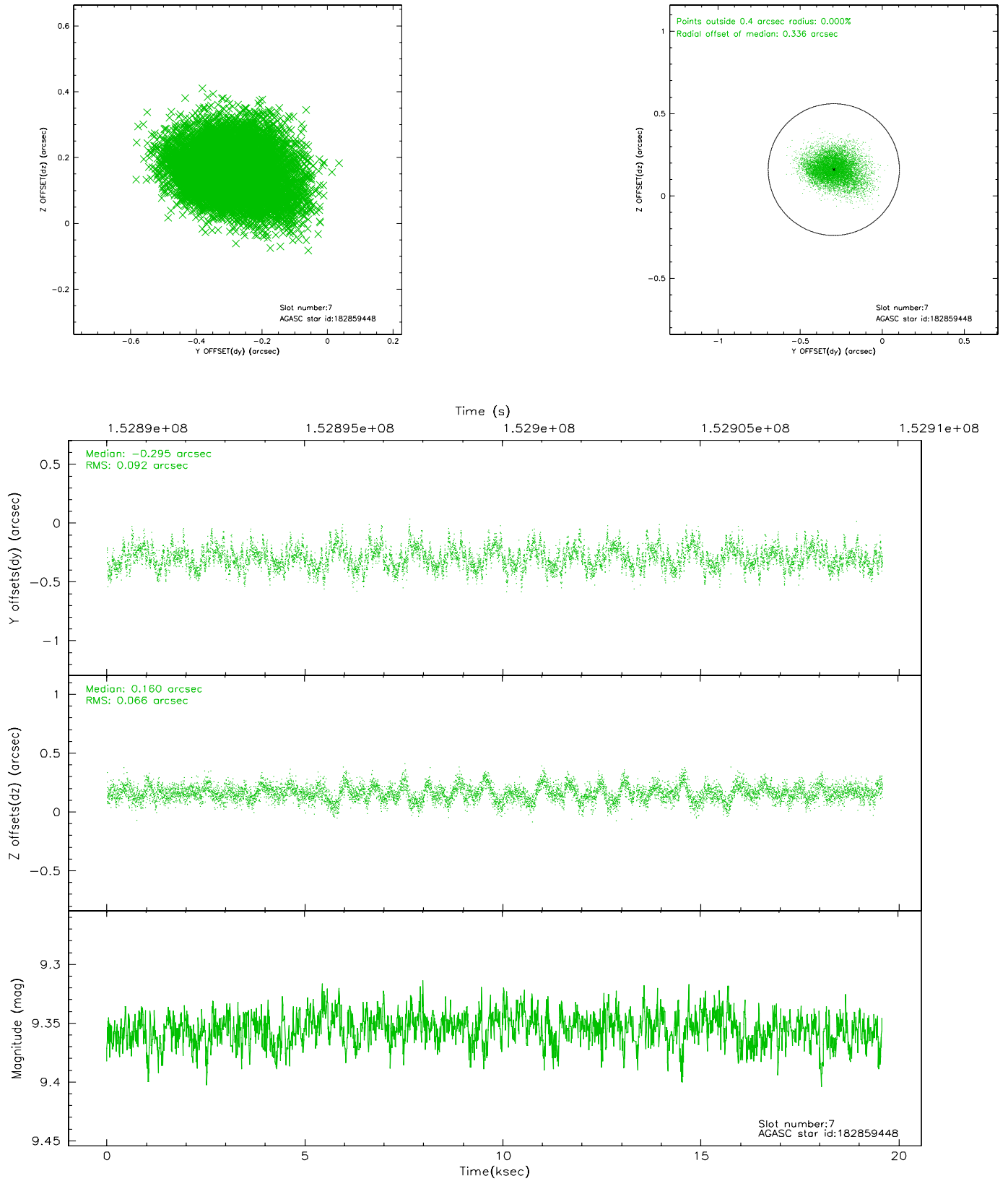
2.4.3 Slot 5



2.4.4 Slot 6

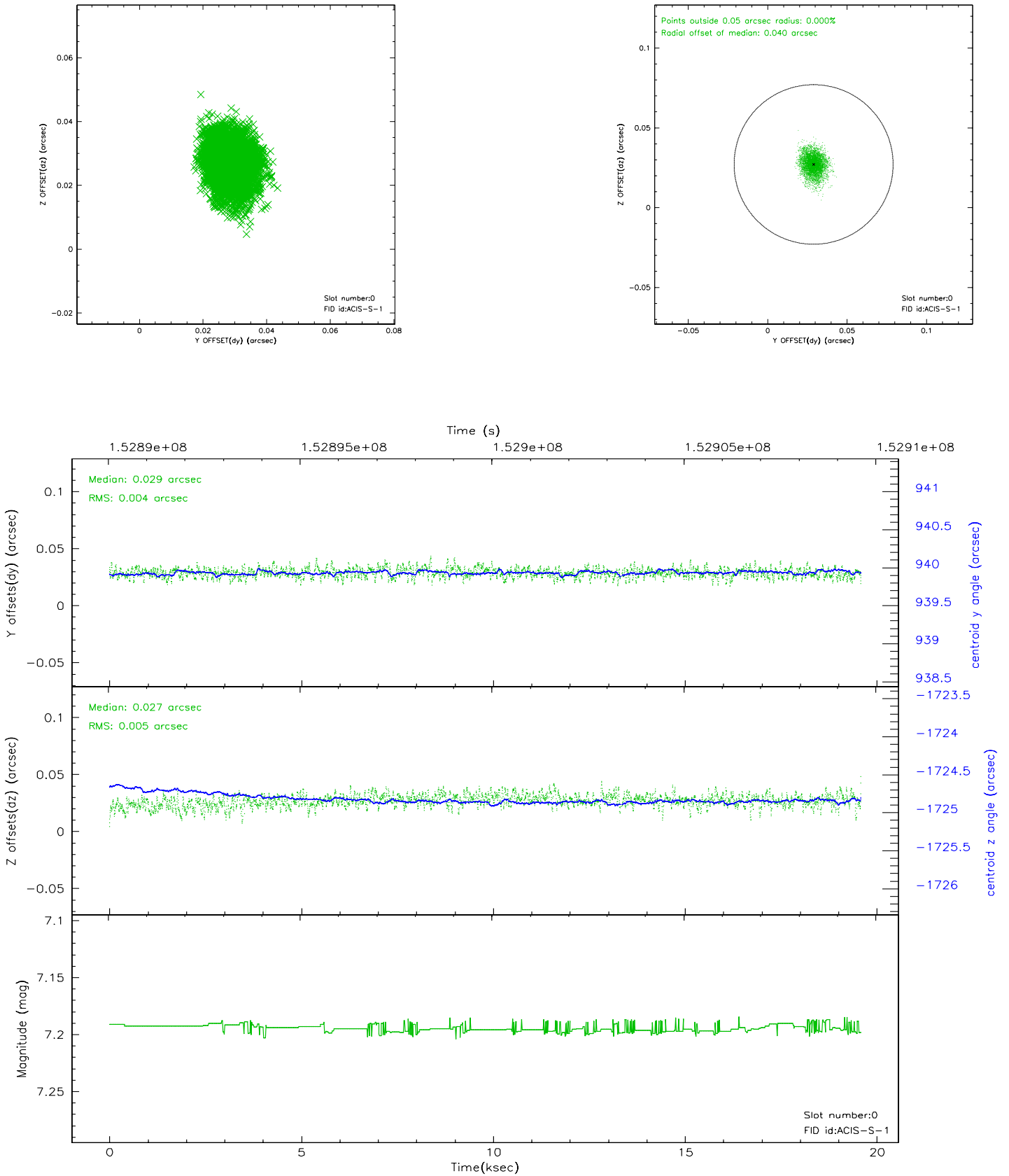


2.4.5 Slot 7

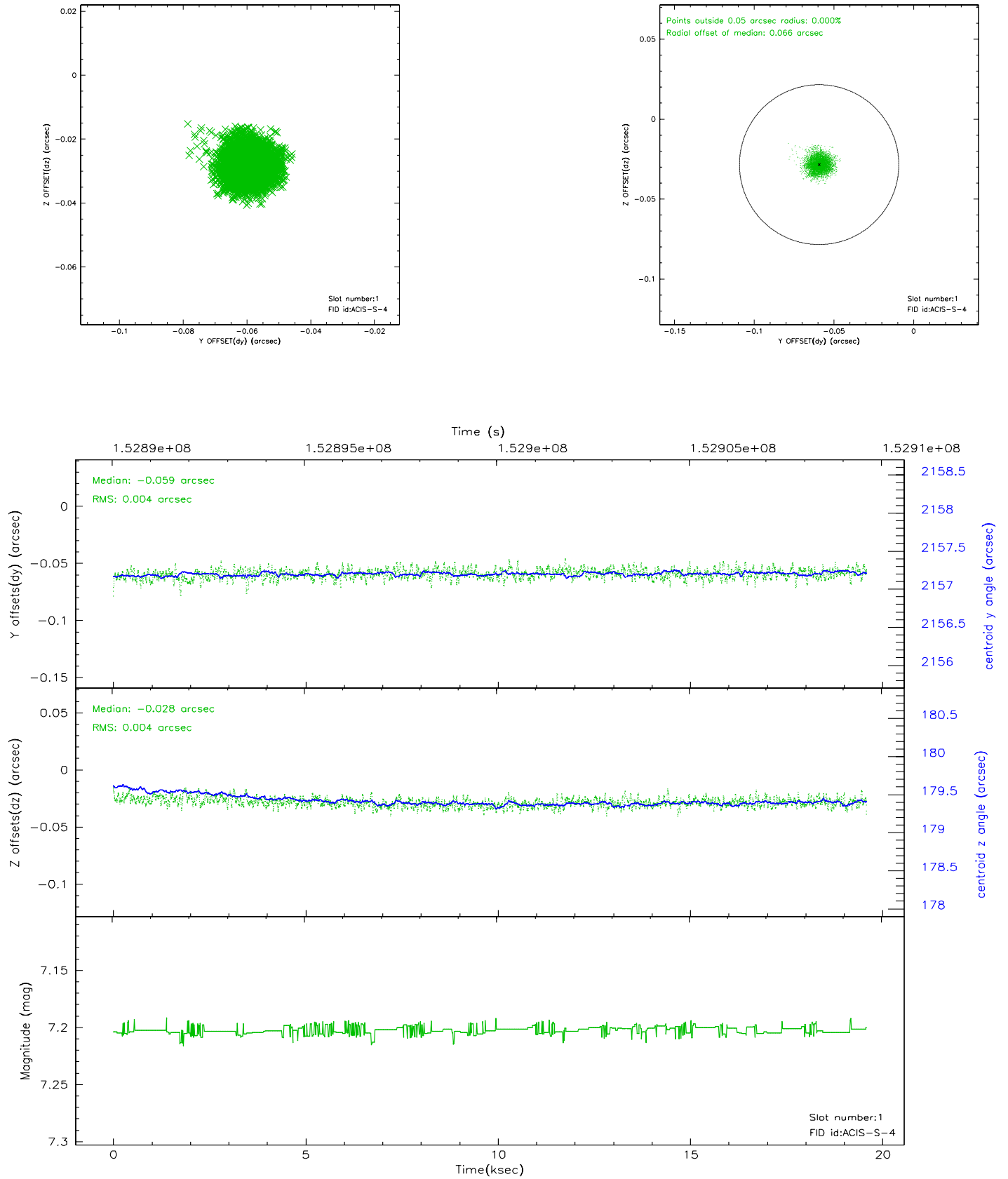


2.5 FID Slots

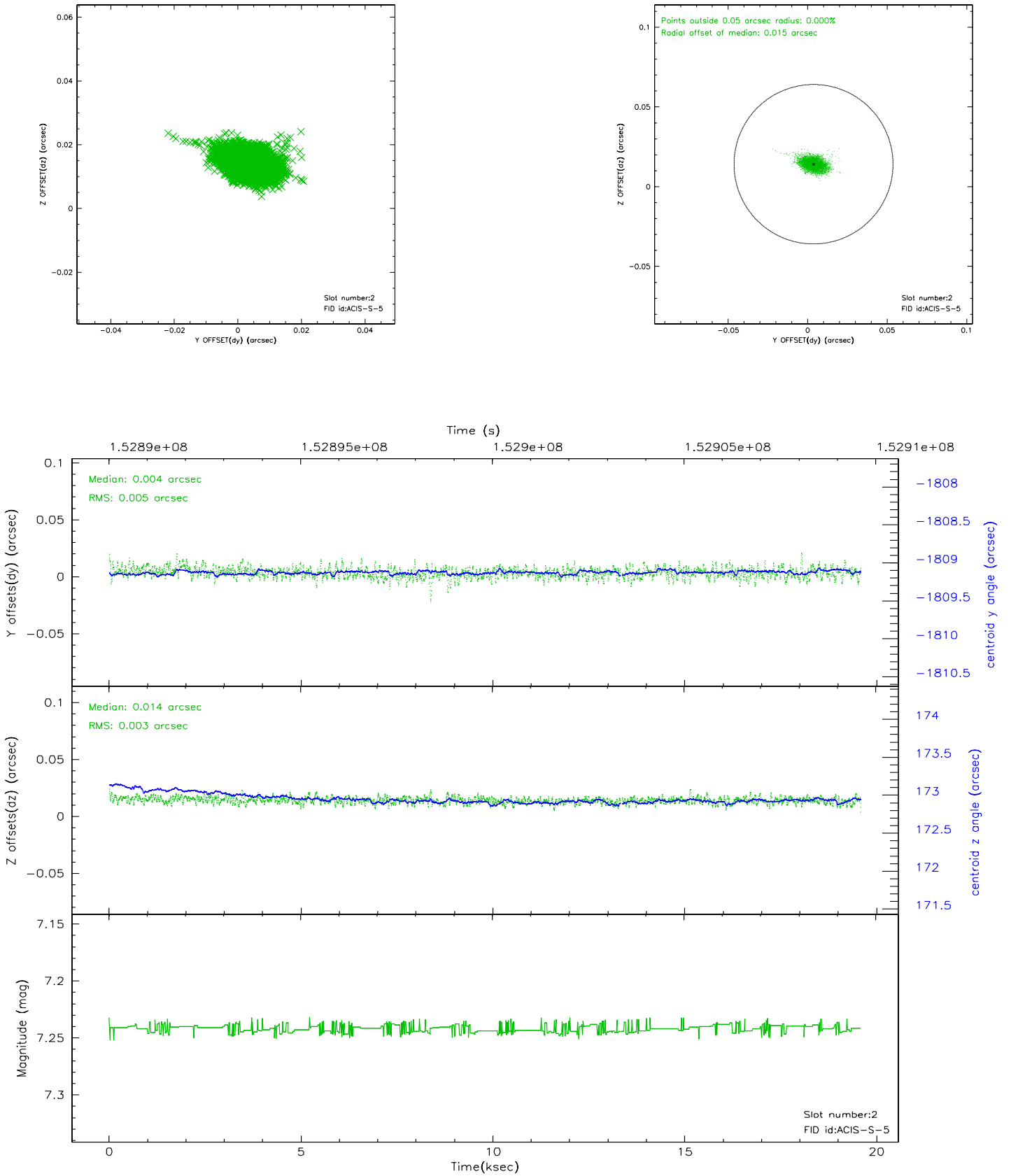
2.5.1 Slot 0



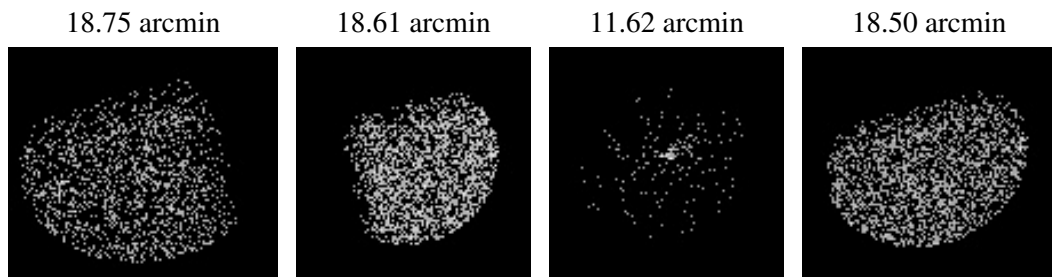
2.5.2 Slot 1



2.5.3 Slot 2



3 Point Sources



A Summary

A.1 Status

V&V Scientist	Beth Sundheim
V&V Date (YYYY-MM-DD)	2006.10.12
V&V Edition	1
V&V Disposition and Status	OK
V&V Charge Time	19.212

A.2 Comments