

V&V Reference Report

L2 ASCDS Version : 7.6.9

Observation 3058 - L2 Version 001
Chandra X-Ray Center

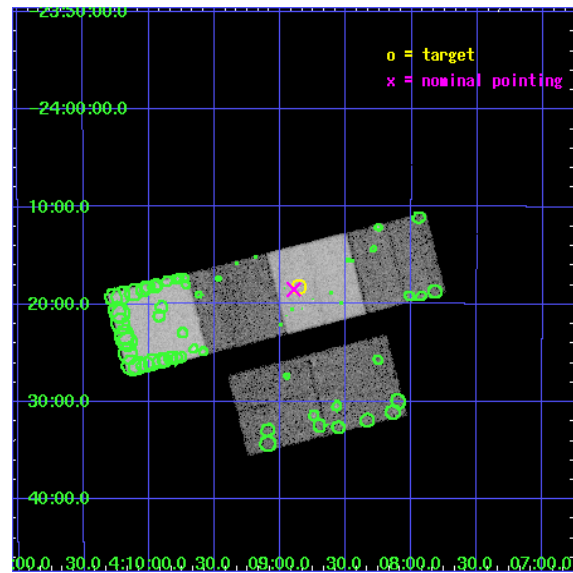
L2 Processing Date : Oct 14 2006

Contents

1	Front	2
2	OBI	3
2.1	OBI	3
2.1.1	Images	3
2.1.2	Bias	3
2.1.3	Parameters	4
2.1.4	Events	4
2.2	Compared Parameters	5
2.3	Aspect	6
2.4	Star Slots	9
2.4.1	Slot 3	9
2.4.2	Slot 4	10
2.4.3	Slot 5	11
2.4.4	Slot 6	12
2.4.5	Slot 7	13
2.5	FID Slots	14
2.5.1	Slot 0	14
2.5.2	Slot 1	15
2.5.3	Slot 2	16
3	Point Sources	17
A	Summary	18
A.1	Status	18
A.2	Comments	18

1 Front

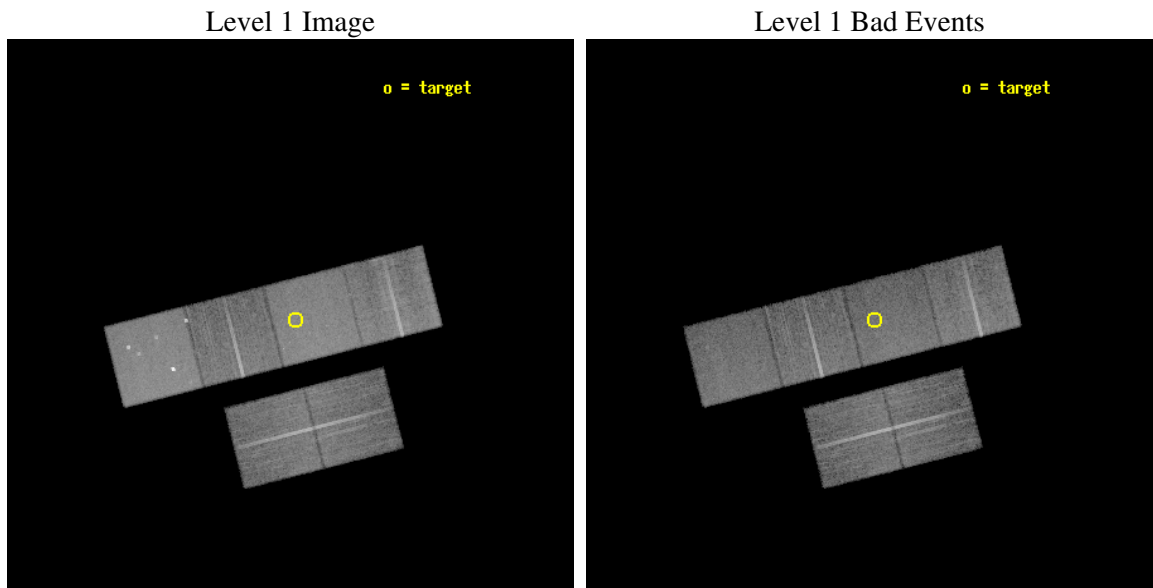
seq_num	700497
obs_id	3058
title	X-RAY STUDIES OF HIGH REDSHIFT RADIO GALAXIES
observer	Dr. Chris Carilli
object	0406-244
dtcycle	0
cycle	P
ra_targ	62.214583
dec_targ	-24.304583
ra_nom	62.224221712112
dec_nom	-24.308539822652
roll_nom	345.80518651437
revision	3
ontime	20179.199924827
livetime	19923.678744923
ontime2	20179.199924827
ontime3	20179.199924827
ontime5	20179.199924827
ontime6	20179.199924827
ontime7	20179.199924827
ontime8	20179.199924827
l2events	207013



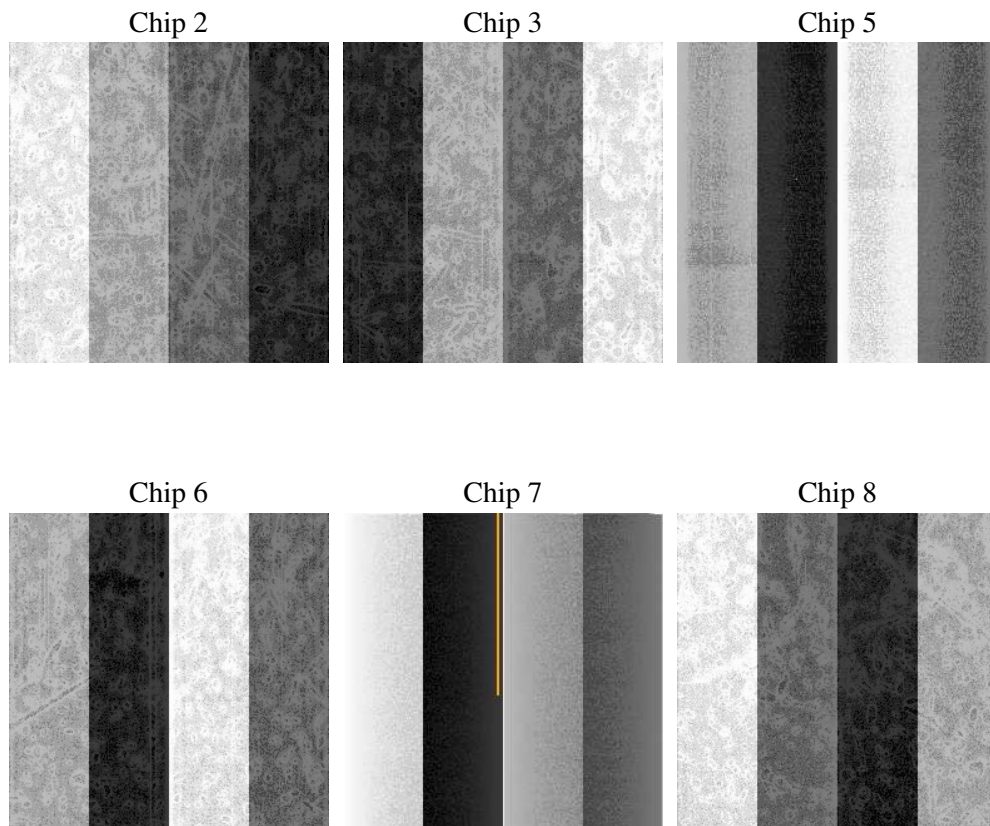
2 OBI

2.1 OBI

2.1.1 Images



2.1.2 Bias



2.1.3 Parameters

obi_num	2
ascdsver	7.6.9
caldsver	3.2.3
date	2006-10-14T20:53:03
revision	3

sched_exp_time	20000.000000
ontime	20201.201252997
ontime2	20201.201252997
ontime3	20201.201252997
ontime5	20201.201252997
ontime6	20201.201252997
ontime7	20201.201252997
ontime8	20201.201252997
l1events	908690

2.1.4 Events

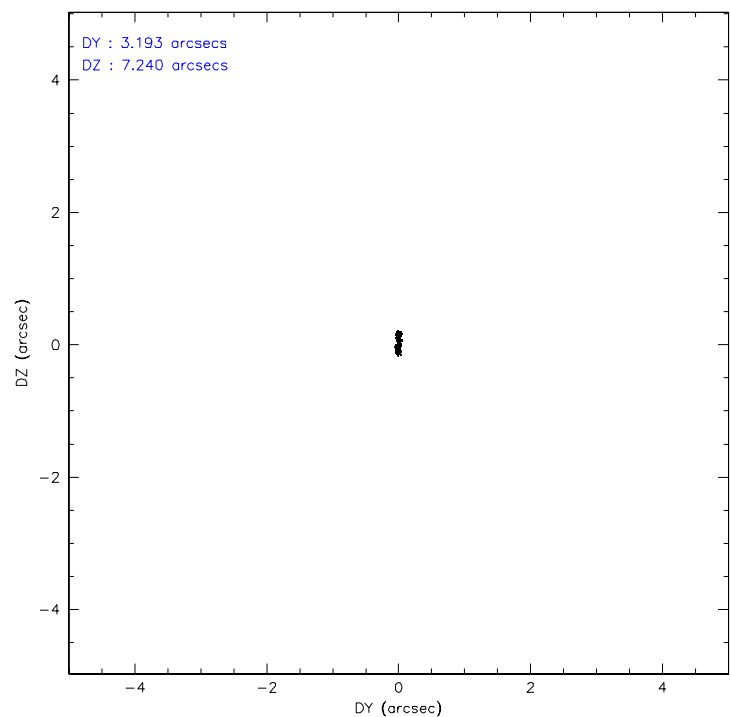
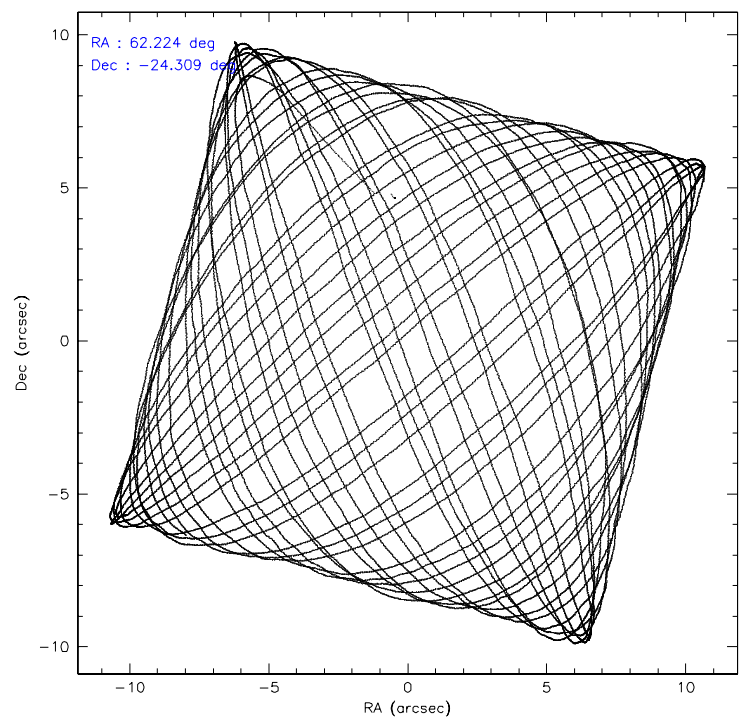
	ccd 2	ccd 3	ccd 5	ccd 6	ccd 7	ccd 8
level 1 events	127143	118942	199323	127956	175249	160077
rejected events	112552	104673	104060	113075	103671	127206
rejected %	88%	88%	52%	88%	59%	79%

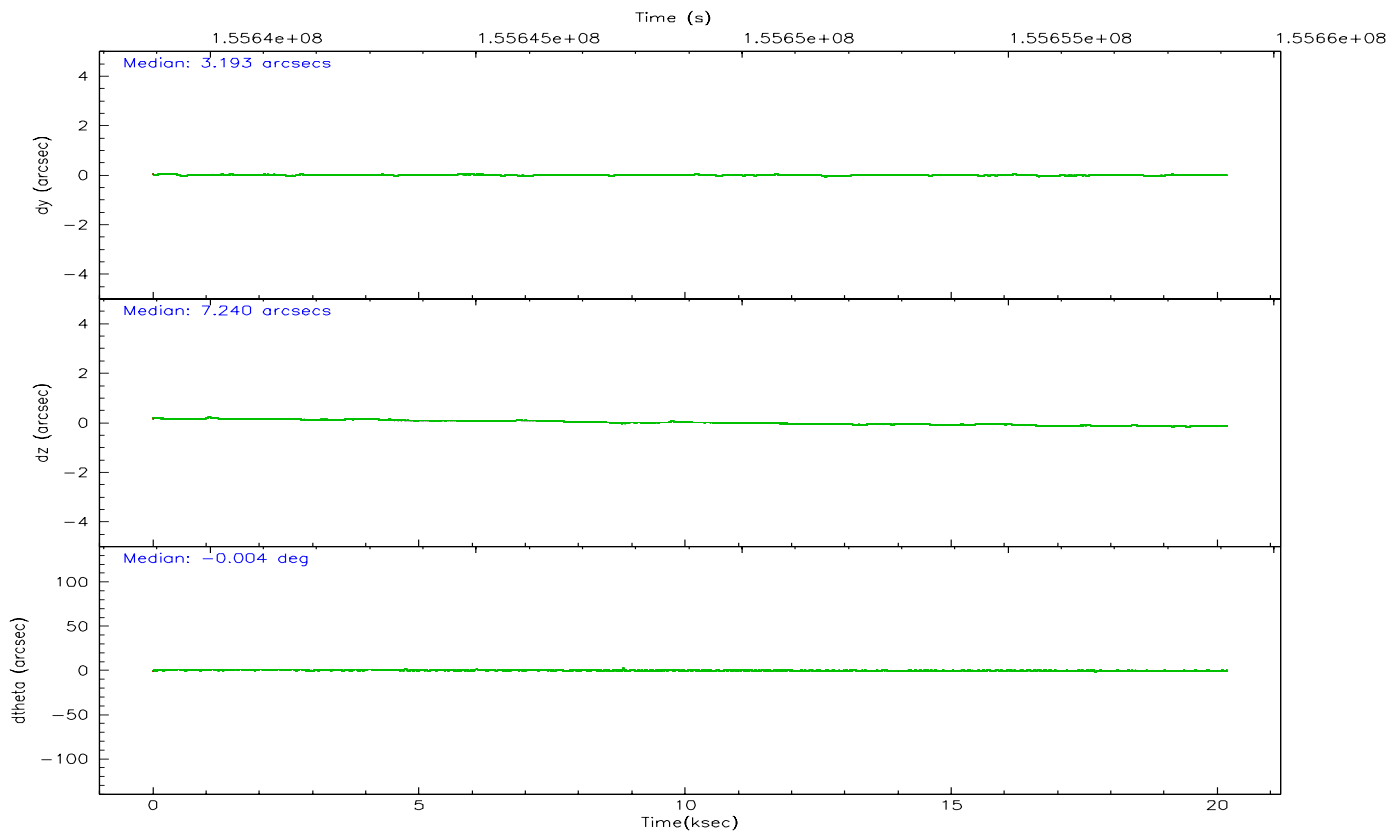
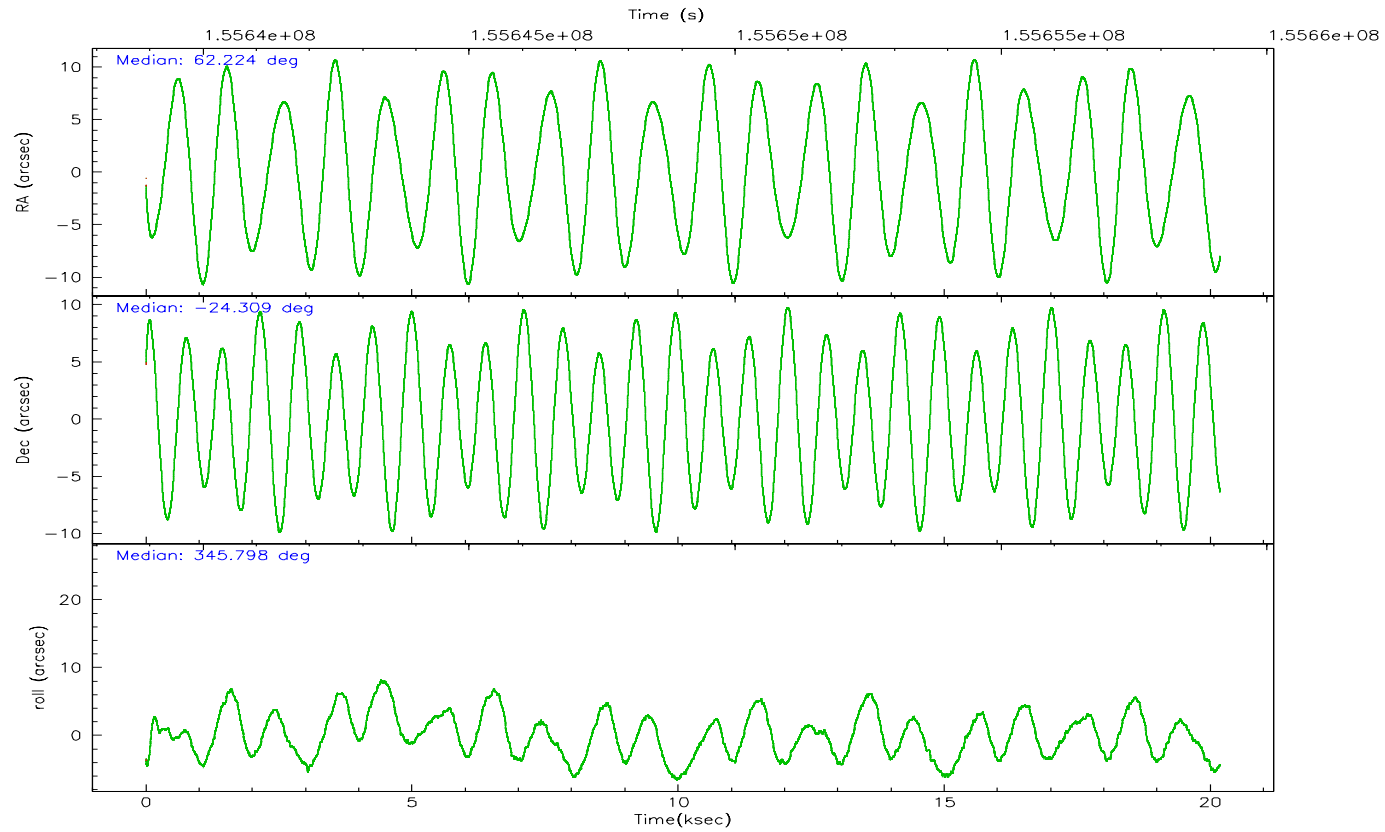
	ccd 2	ccd 3	ccd 5	ccd 6	ccd 7	ccd 8
grade 0 events	6298	6459	13114	6171	4730	10745
	4%	5%	6%	4%	2%	6%
grade 1 events	93	62	143	51	105	93
	0%	0%	0%	0%	0%	0%
grade 2 events	3095	2623	28449	2892	17180	7144
	2%	2%	14%	2%	9%	4%
grade 3 events	1389	1422	2134	1469	3842	3378
	1%	1%	1%	1%	2%	2%
grade 4 events	1393	1358	2153	1459	3798	3138
	1%	1%	1%	1%	2%	1%
grade 5 events	4818	5366	8881	5526	11237	7123
	3%	4%	4%	4%	6%	4%
grade 6 events	2437	2426	49507	2907	42113	8488
	1%	2%	24%	2%	24%	5%
grade 7 events	107620	99226	94942	107481	92244	119968
	84%	83%	47%	83%	52%	74%

2.2 Compared Parameters

Parameter	Planned	Actual	Parameter	Planned	Actual
Instrument	ACIS	ACIS	Obspar format version number	6	6
Detector	ACIS-235678	ACIS-235678	Obspar file type	PREDICTED	ACTUAL
Grating	NONE	NONE	Obspar update status	NONE	UPDATED
Data mode	FAINT	FAINT	Number of optional ACIS chips dropped	0	0
Observation mode	POINTING	POINTING	On-chip summing requested	N	N
Pointing RA	62.195615	62.22422171211223	Subarray requested	NONE	NONE
Pointing Dec	-24.316329	-24.30853982265178	Alternating exposures requested	N	N
Pointing Roll	345.636787	345.8051865143747	Primary exposure time	0.000000	3.2
SIM focus pos (mm)	-0.684267	-0.6828225247311905			
SIM defocus (mm)	0	0.001444936568705701			
SIM translation stage pos (mm)	-190.132523	-190.1400660498719			
SIM translation stage offset (mm)	0	0.00754346686406393			
Observation start time	155639115.184000	155638036.75344			
Observation start date	2002-12-07T09:04:11	2002-12-07T08:47:16			
Observation end time	155659115.184000	155660008.65435			
Observation end date	2002-12-07T14:37:31	2002-12-07T14:53:28			
Read mode	TIMED	TIMED			

2.3 Aspect



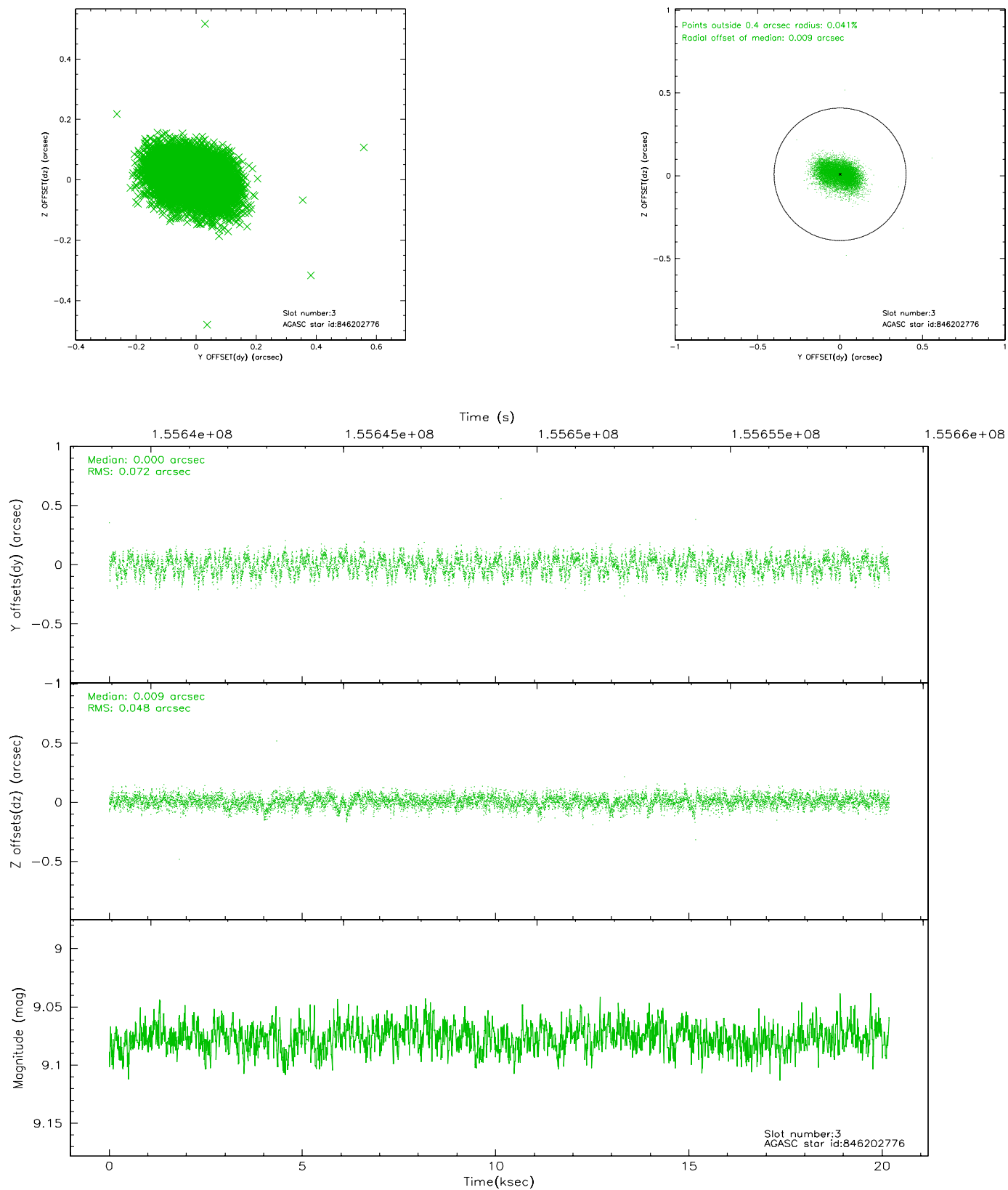


Slot Statistics

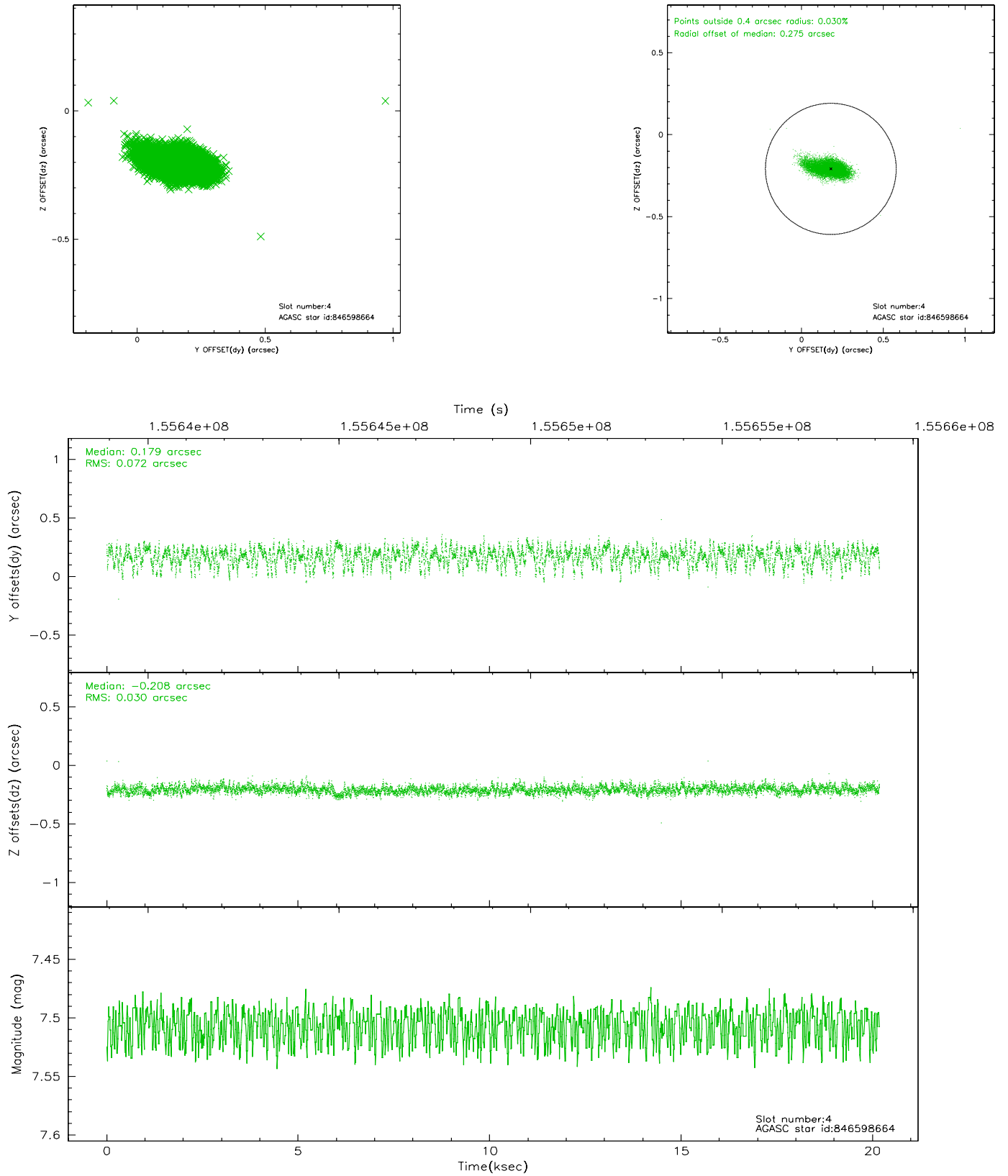
slot	status	id	mag	n_pts	med_dy	med_dz	dr1	dr2	ra	dec	mean_y	mean_z
0	FID	ACIS-S-2	7.12	4924	-0.006	0.017	0.007	0.012	0.000000	0.000000	-755.85	-1728.40
1	FID	ACIS-S-4	7.20	4924	-0.033	-0.002	0.005	0.010	0.000000	0.000000	2157.32	179.87
2	FID	ACIS-S-5	7.24	4923	0.008	-0.007	0.006	0.010	0.000000	0.000000	-1808.44	173.75
3	GUIDE	846202776	9.08	9844	0.000	0.009	0.092	0.146	61.950035	-23.807490	-1238.30	1573.17
4	GUIDE	846598664	7.51	9847	0.179	-0.208	0.077	0.145	62.685033	-25.096075	2242.83	-2326.31
5	GUIDE	846603472	7.84	9842	-0.176	0.019	0.061	0.100	62.250757	-25.017799	800.87	-2401.88
6	GUIDE	846205296	8.74	9846	-0.072	-0.103	0.069	0.111	61.865406	-24.743147	-664.48	-1757.98
7	GUIDE	846208952	9.44	9840	0.077	0.285	0.106	0.178	63.072548	-23.908290	2433.28	2130.75

2.4 Star Slots

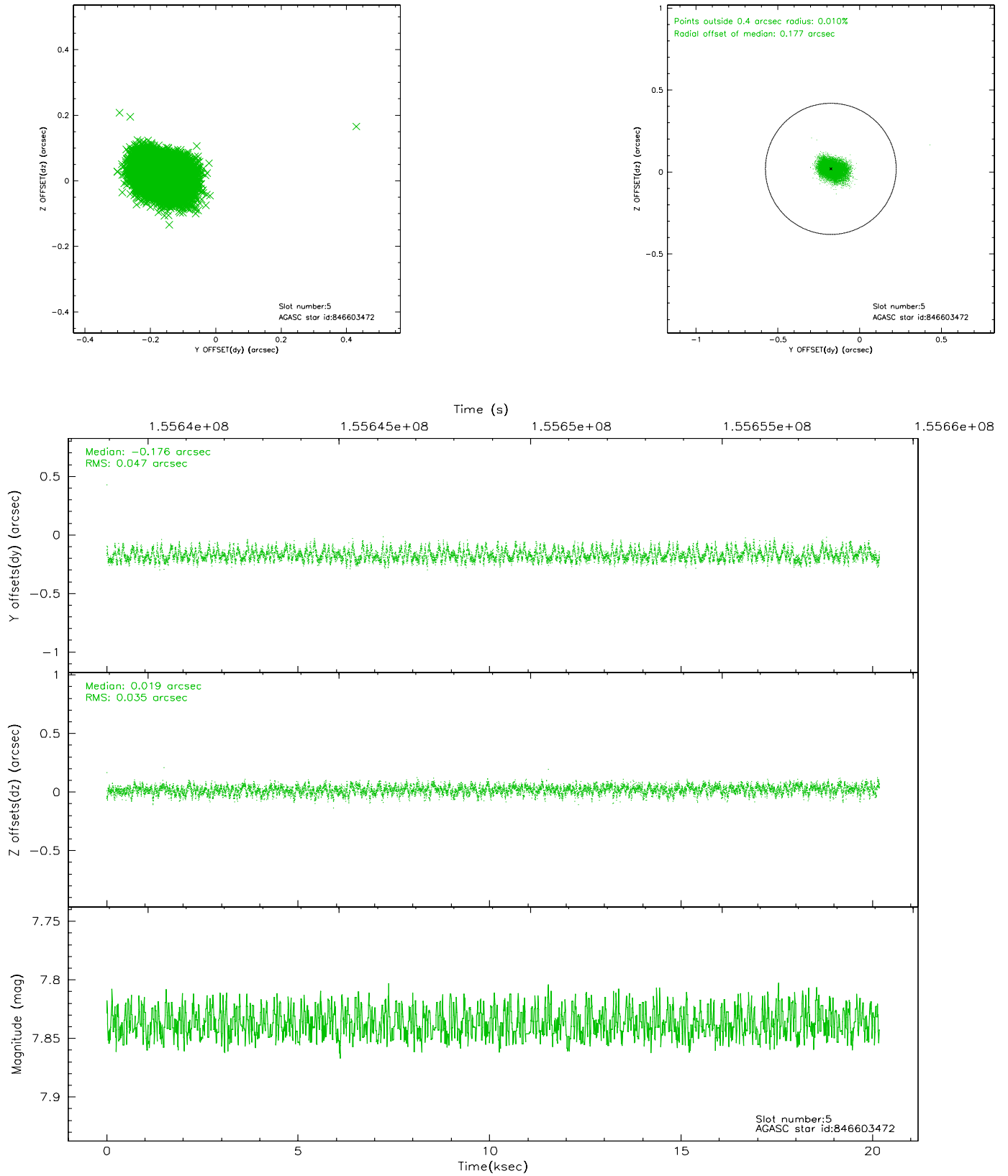
2.4.1 Slot 3



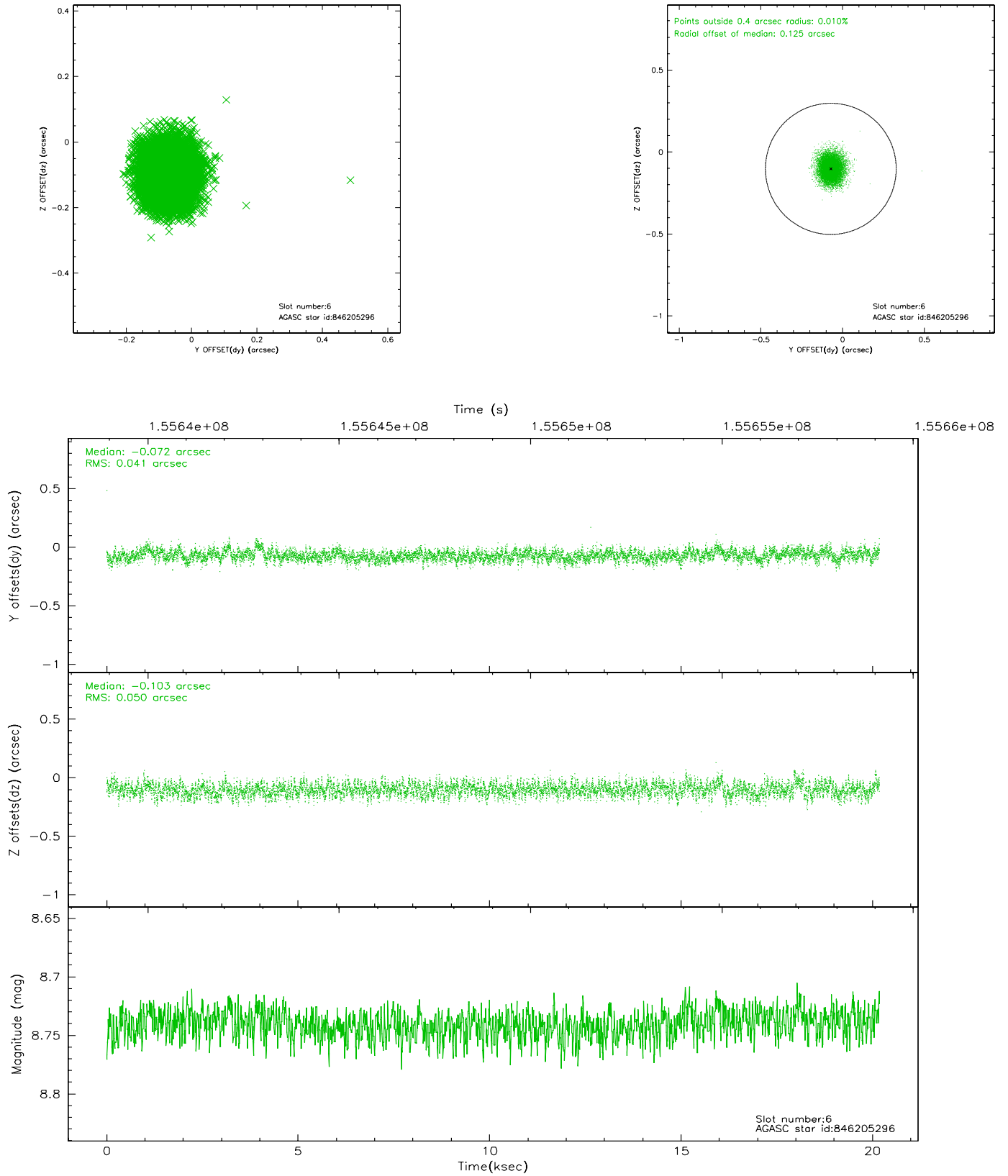
2.4.2 Slot 4



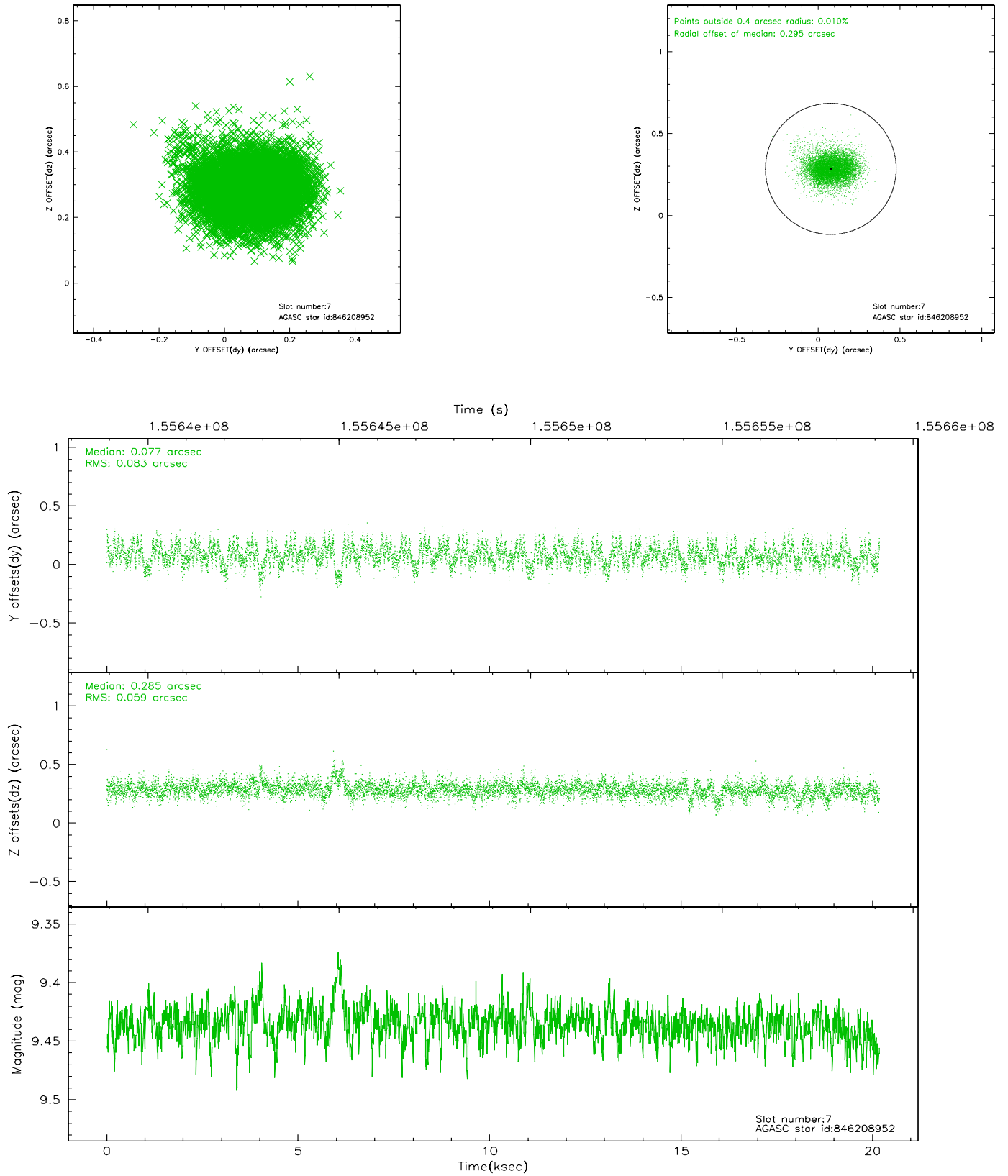
2.4.3 Slot 5



2.4.4 Slot 6

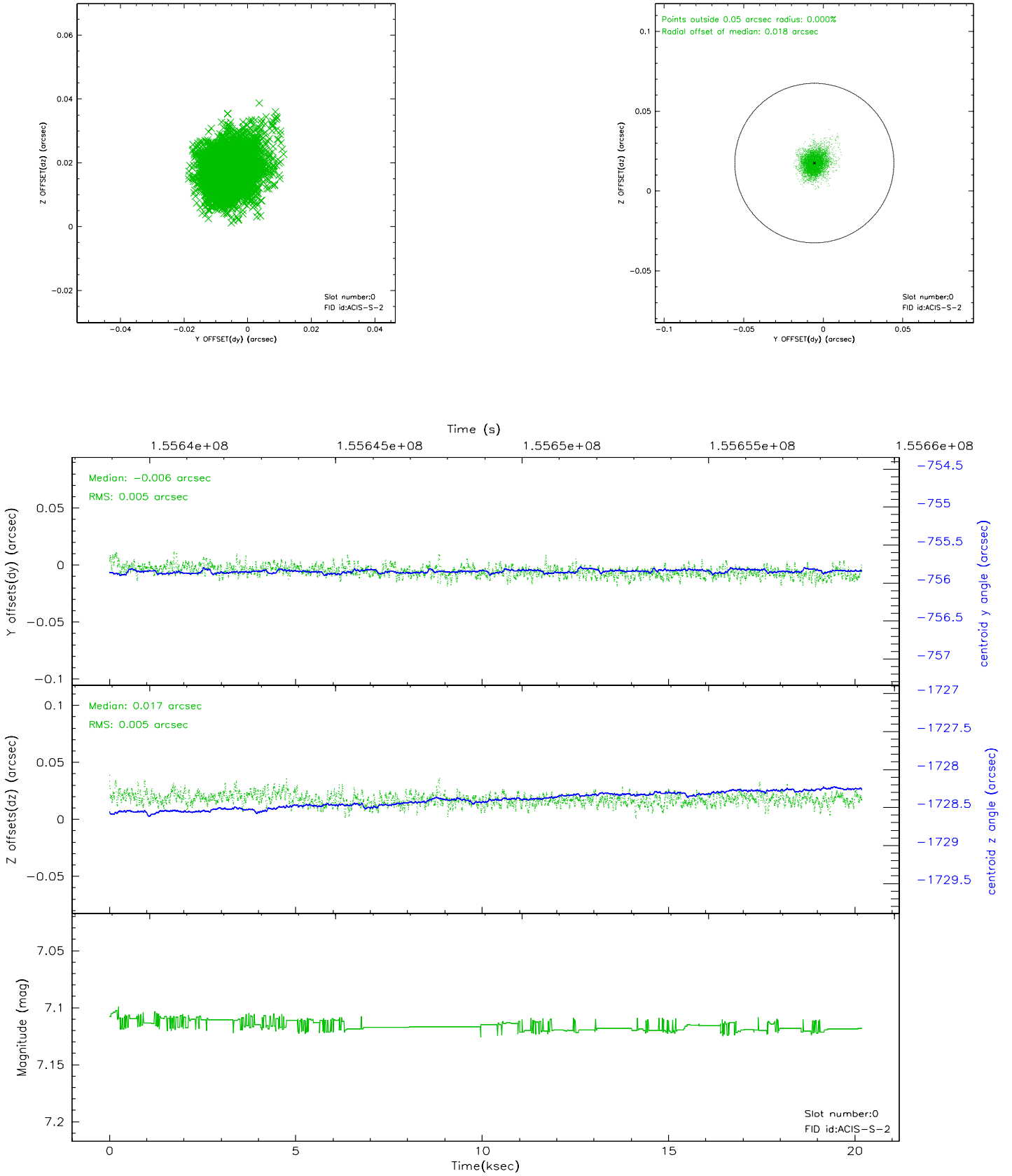


2.4.5 Slot 7

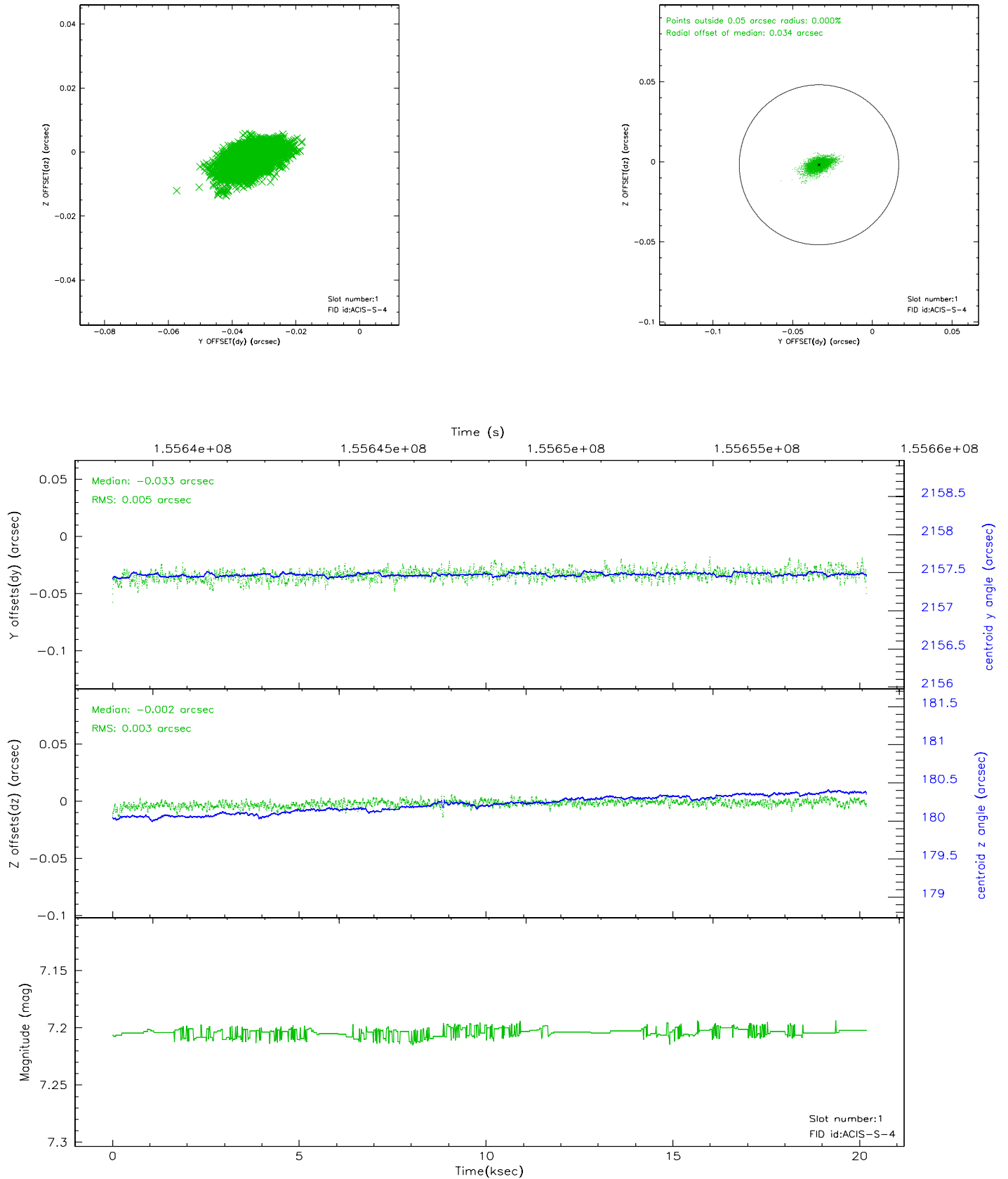


2.5 FID Slots

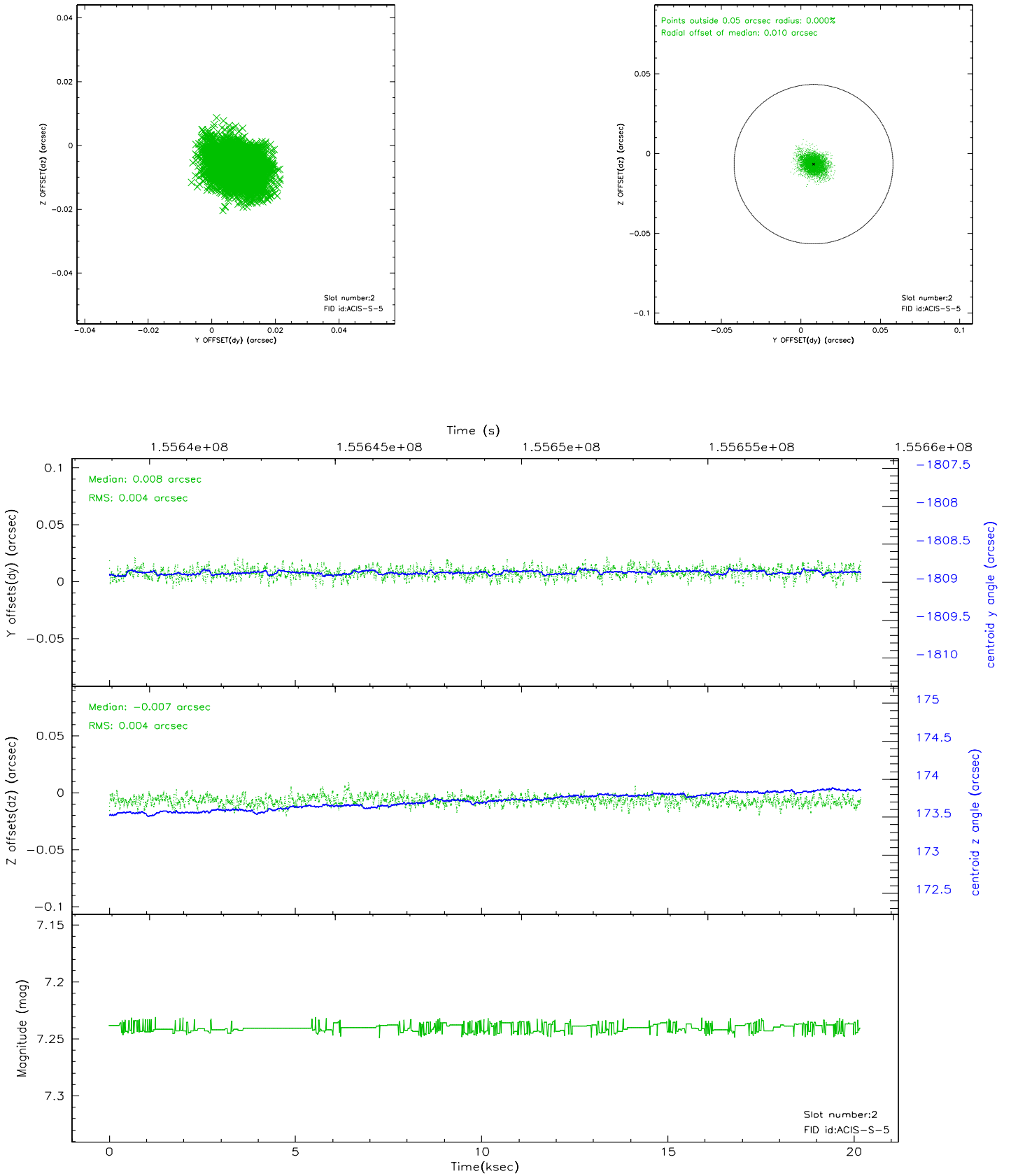
2.5.1 Slot 0



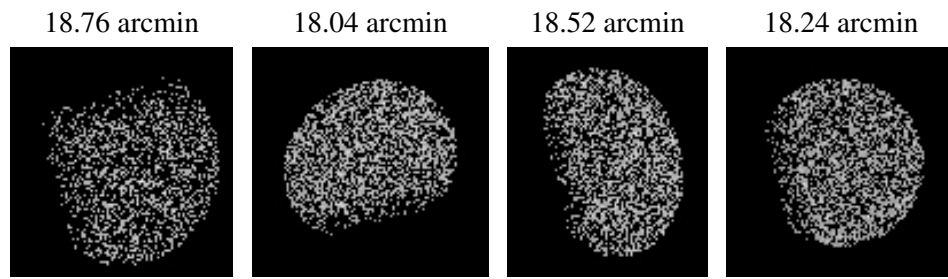
2.5.2 Slot 1



2.5.3 Slot 2



3 Point Sources



A Summary

A.1 Status

V&V Scientist	Beth Sundheim
V&V Date (YYYY-MM-DD)	2006.10.15
V&V Edition	1
V&V Disposition and Status	OK
V&V Charge Time	20.179

A.2 Comments