

V&V Reference Report

L2 ASCDS Version : 8.4.5

Observation 3050 - L2 Version 3
Chandra X-Ray Center

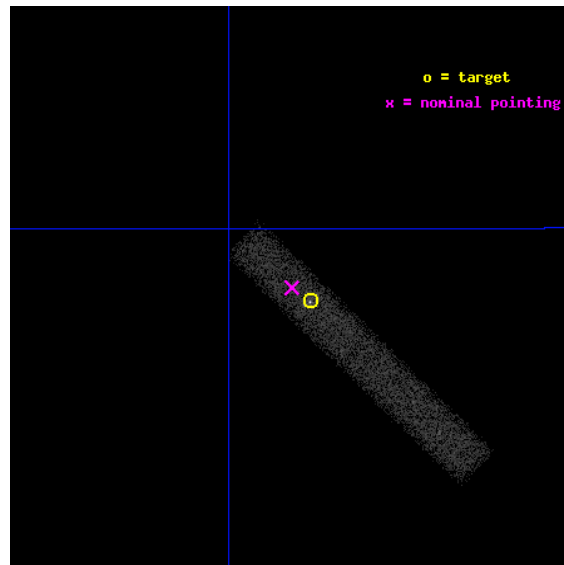
L2 Processing Date : Oct 18 2012

Contents

1	Front	2
2	OBI	3
2.1	OBI	3
2.1.1	Images	3
2.1.2	Bias	3
2.1.3	Parameters	4
2.1.4	Events	4
2.2	Compared Parameters	5
2.3	Aspect	6
2.4	Star Slots	9
2.4.1	Slot 3	9
2.4.2	Slot 4	10
2.4.3	Slot 5	11
2.4.4	Slot 6	12
2.4.5	Slot 7	13
2.5	FID Slots	14
2.5.1	Slot 0	14
2.5.2	Slot 1	15
2.5.3	Slot 2	16
A	Summary	17
A.1	Status	17
A.2	Comments	17

1 Front

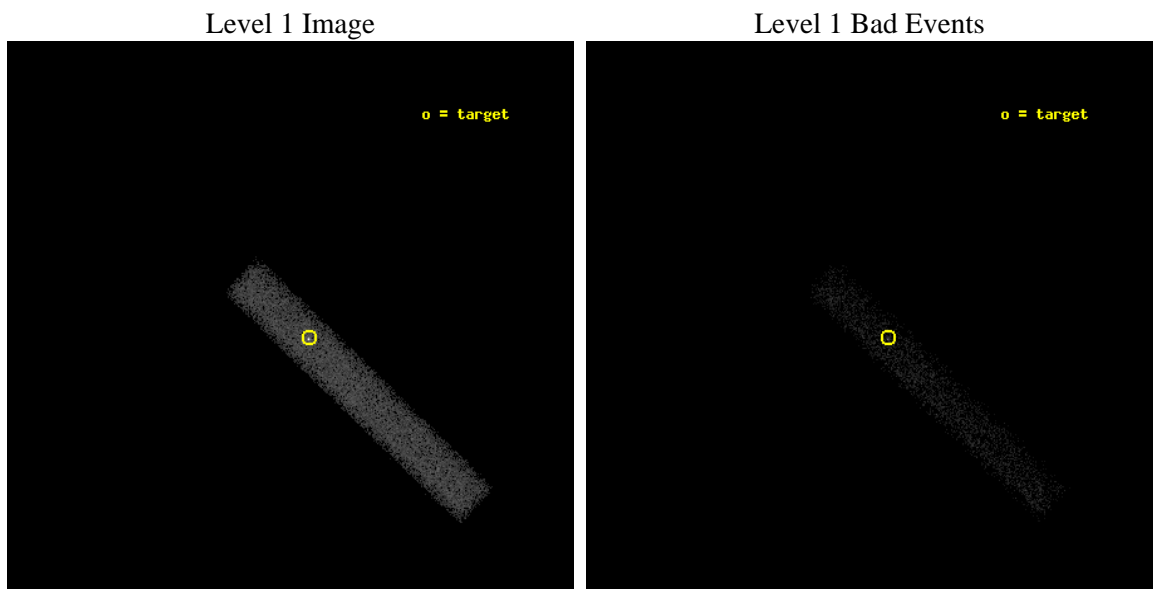
seq_num	700489	Sequence number
obs_id	3050	Observation id
title	X-RAY IMAGING OF QUASAR JETS	Proposal title
observer	Professor Alan Marscher	Principal investigator
object	1317+520	Source name
dtcycle	0	
cycle	P	events from which exps? Prim/Second/Both
ra_targ	199.9425	Observer's specified target RA [deg]
dec_targ	51.802278	Observer's specified target Dec [deg]
ra_nom	199.95544130215	Nominal RA [deg]
dec_nom	51.807657282289	Nominal Dec [deg]
roll_nom	43.98663983495	Nominal Roll [deg]
revision	3	Processing version of data
ontime	20140.800300092	Sum of GTIs [s]
livetime	18266.642753575	Livetime [s]
ontime7	20140.800300092	Sum of GTIs [s]
l2events	15325	Number of level 2 events



2 OBI

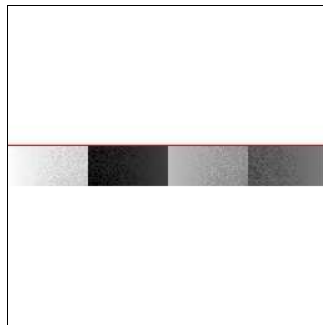
2.1 OBI

2.1.1 Images



2.1.2 Bias

Chip 7



2.1.3 Parameters

obi_num	1	Obi number	sched_exp_time	20000.000000	[s] Scheduled observation exposure time
ascdsver	8.4.5	Processing system revision	ontime	20140.800300092	Sum of GTIs [s]
caldsver	4.5.2	 	ontime7	20140.800300092	Sum of GTIs [s]
date	2012-10-18T11:32:34	Date and time of file creation	l1events	29671	Number of level 1 events
revision	3	Processing version of data			

2.1.4 Events

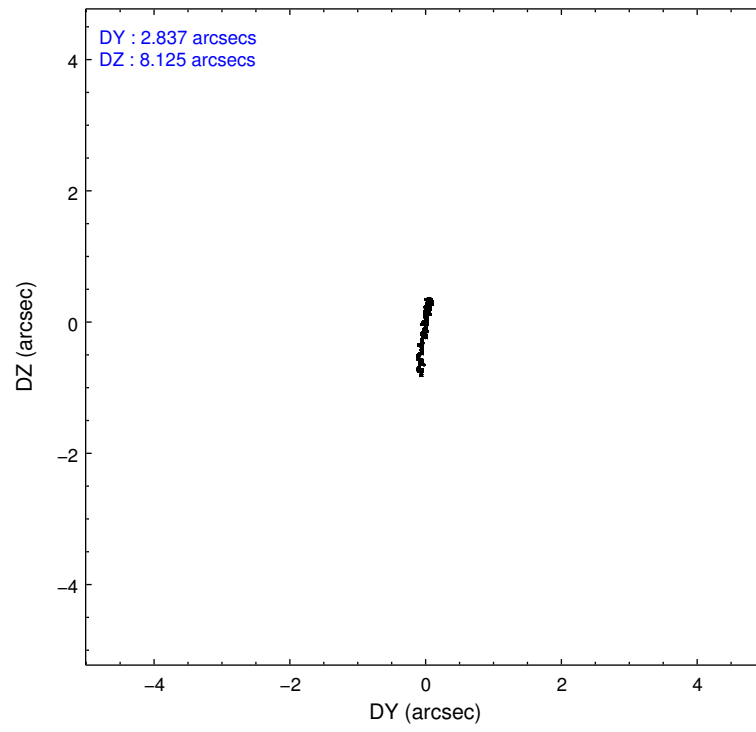
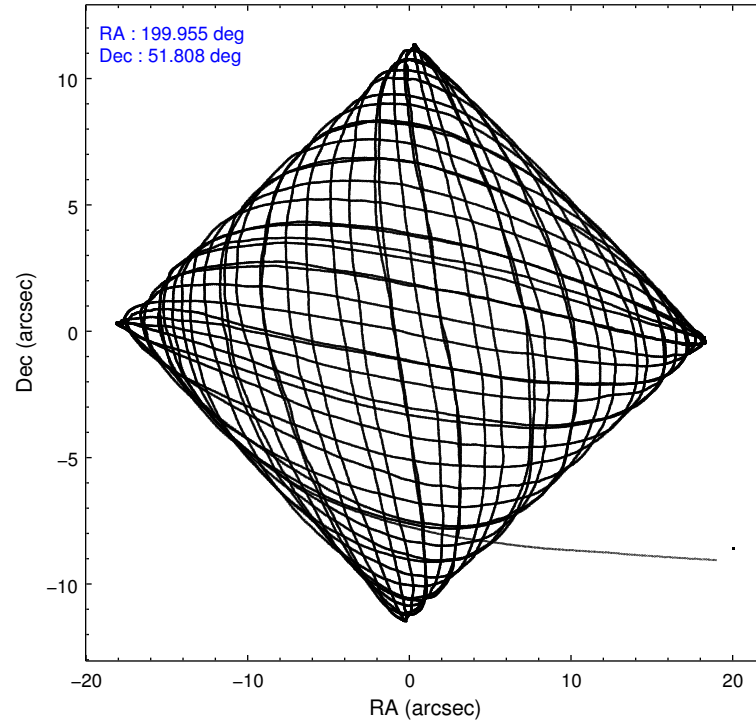
	ccd 7
level 1 events	29671
rejected events	13879
rejected %	46%

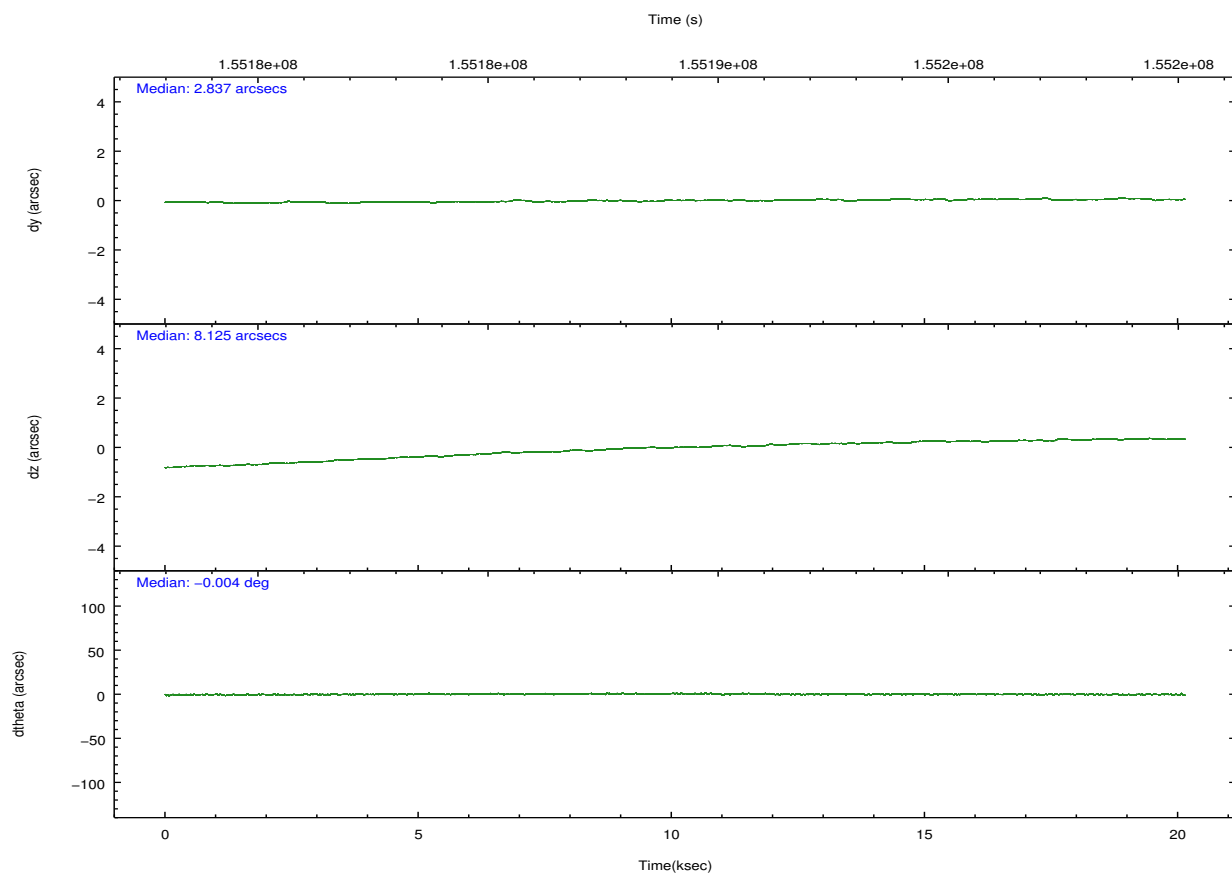
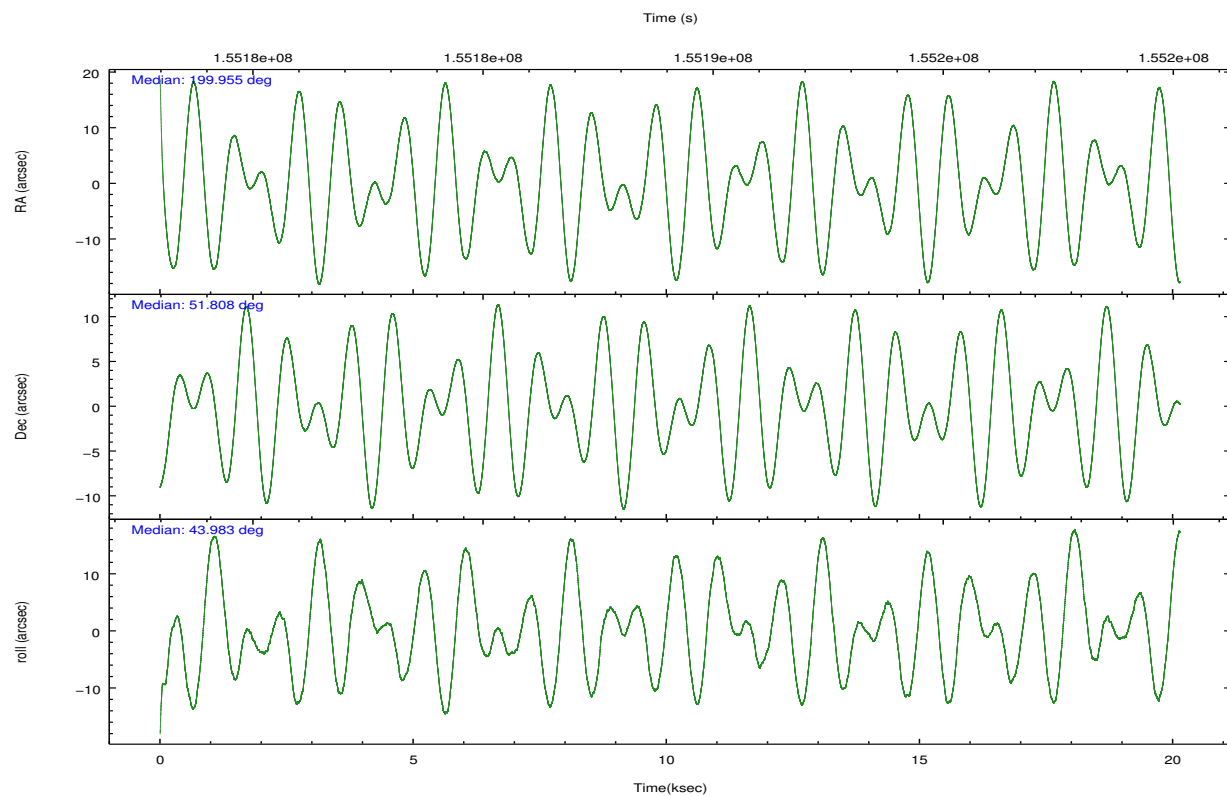
	ccd 7
grade 0 events	2822
	9%
grade 1 events	38
	0%
grade 2 events	3305
	11%
grade 3 events	1997
	6%
grade 4 events	1923
	6%
grade 5 events	2248
	7%
grade 6 events	6976
	23%
grade 7 events	10362
	34%

2.2 Compared Parameters

Parameter	Planned	Actual	Parameter	Planned	Actual
Instrument	ACIS	ACIS	Obspar format version number	7	7
Detector	ACIS-7	ACIS-7	Obspar file type	PREDICTED	ACTUAL
Grating	NONE	NONE	Obspar update status	NONE	UPDATED
Data mode	FAINT	FAINT	Number of optional ACIS chips dropped	0	0
Observation mode	POINTING	POINTING	On-chip summing requested	N	N
[deg] Pointing RA	199.943916	199.9554413021488	Subarray requested	CUSTOM	1/8
[deg] Pointing Dec	51.781403	51.80765728228856	Subarray start row	449	449
[deg] Pointing Roll	43.839071	43.98663983494974	Subarray row count	128	128
[mm] SIM focus pos	-0.684267	-0.6828225247311905	Alternating exposures requested	N	N
[mm] SIM defocus	0	0.001444936568705701	[s] Primary exposure time	0.000000	0.4
[mm] SIM translation stage pos	-190.132523	-190.1400660498719			
[mm] SIM translation stage offset	0	0.00754346686406393			
[s] Observation start time (MET)	155179137.184000	155178076.69675			
Observation start date	2002-12-02T01:17:53	2002-12-02T01:01:16			
[s] Observation end time (MET)	155199137.184000	155199867.68515			
Observation end date	2002-12-02T06:51:13	2002-12-02T07:04:27			
Read mode	TIMED	TIMED			

2.3 Aspect



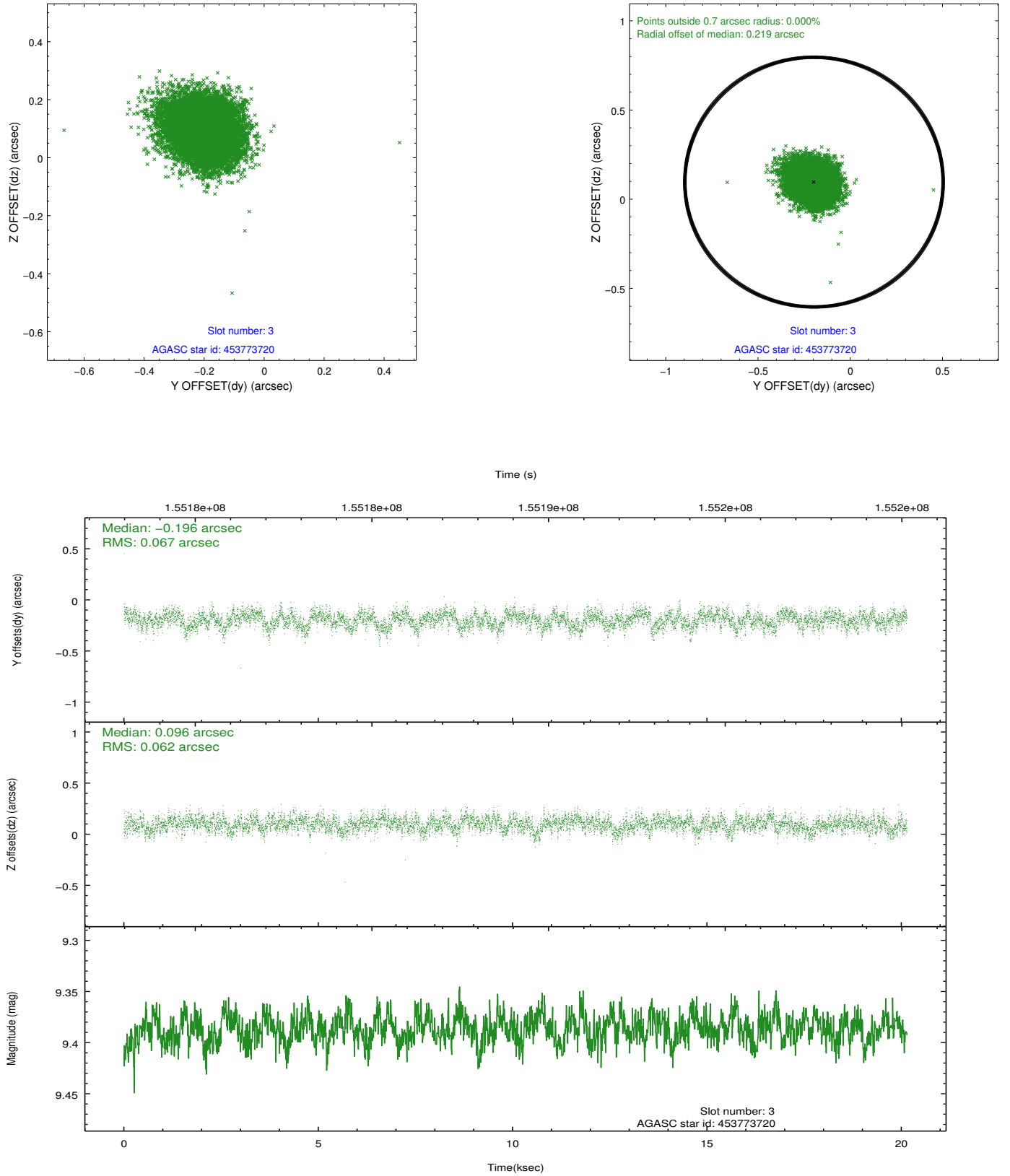


Slot Statistics

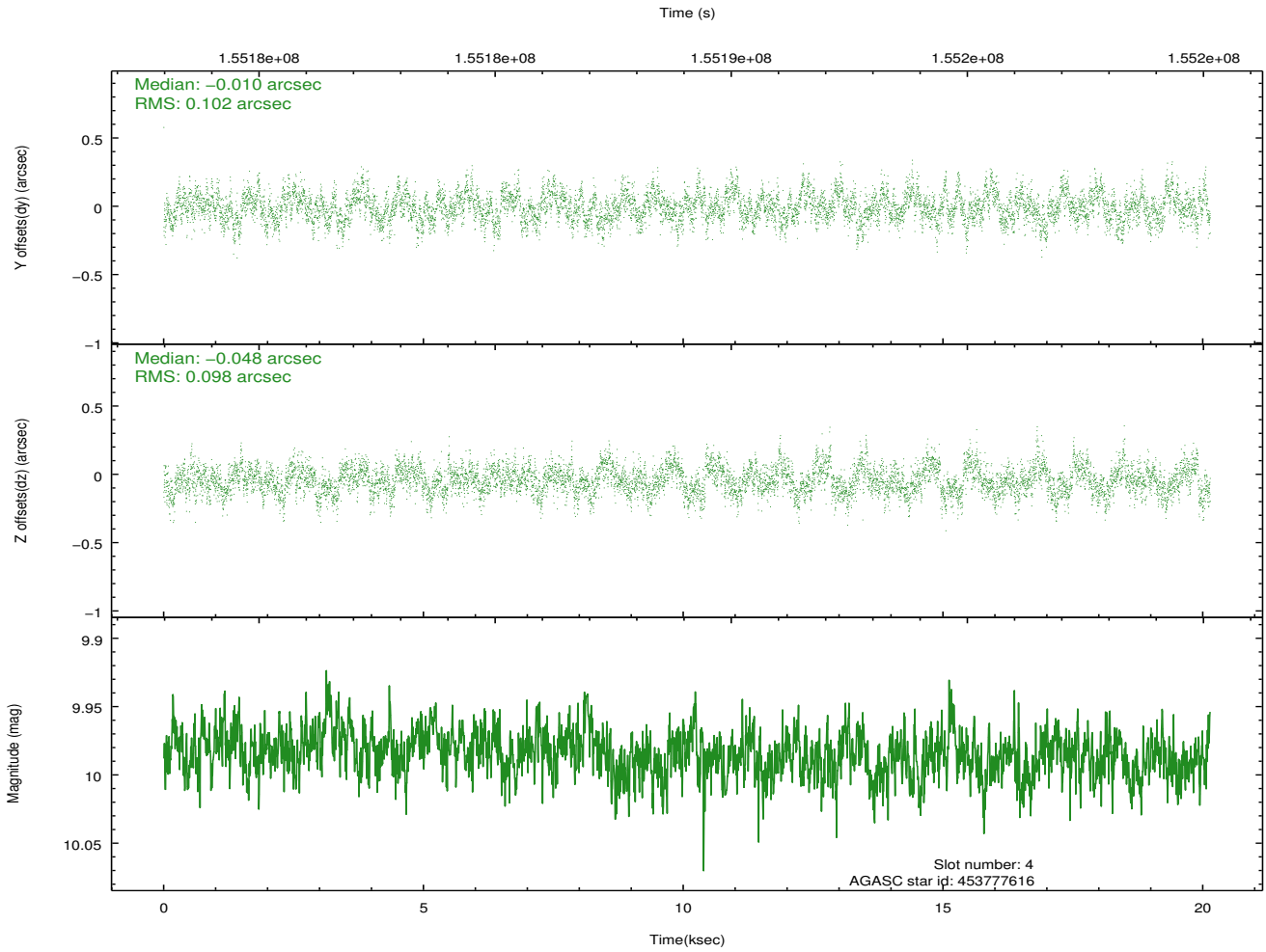
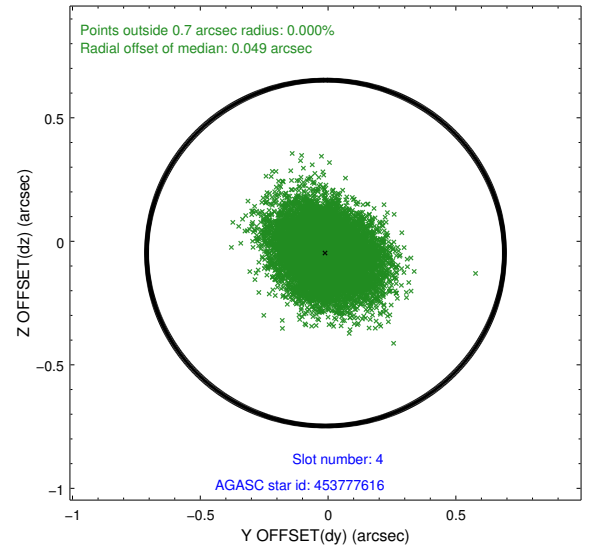
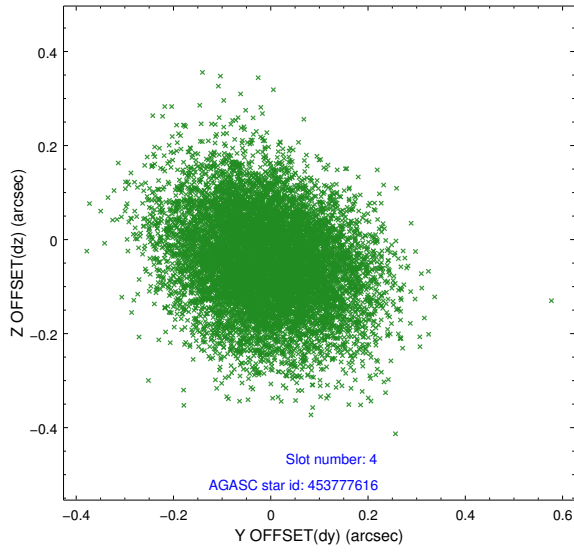
slot	status	id	mag	n_pts	med_dy	med_dz	dr1	dr2	ra	dec	mean_y	mean_z
0	FID	ACIS-S-2	7.11	4913	-0.011	-0.006	0.009	0.014	0.000000	0.000000	-755.49	-1729.23
1	FID	ACIS-S-4	7.20	4913	-0.005	0.007	0.008	0.014	0.000000	0.000000	2157.72	179.06
2	FID	ACIS-S-5	7.24	4913	-0.016	0.008	0.009	0.018	0.000000	0.000000	-1808.08	172.97
3	GUIDE	453773720	9.39	9818	-0.196	0.096	0.096	0.155	200.875622	51.857392	1694.22	-1228.33
4	GUIDE	453777616	9.98	9811	-0.010	-0.048	0.150	0.243	201.080458	51.822928	1942.94	-1629.98
5	GUIDE	453782192	9.38	9825	0.118	-0.081	0.083	0.133	199.534740	51.497959	-1364.75	-99.61
6	GUIDE	453782416	9.41	9798	0.192	-0.073	0.077	0.124	199.391215	51.406077	-1826.32	-112.30
7	GUIDE	453777144	10.01	9818	-0.100	0.103	0.153	0.243	201.163217	51.578639	1479.07	-2399.77

2.4 Star Slots

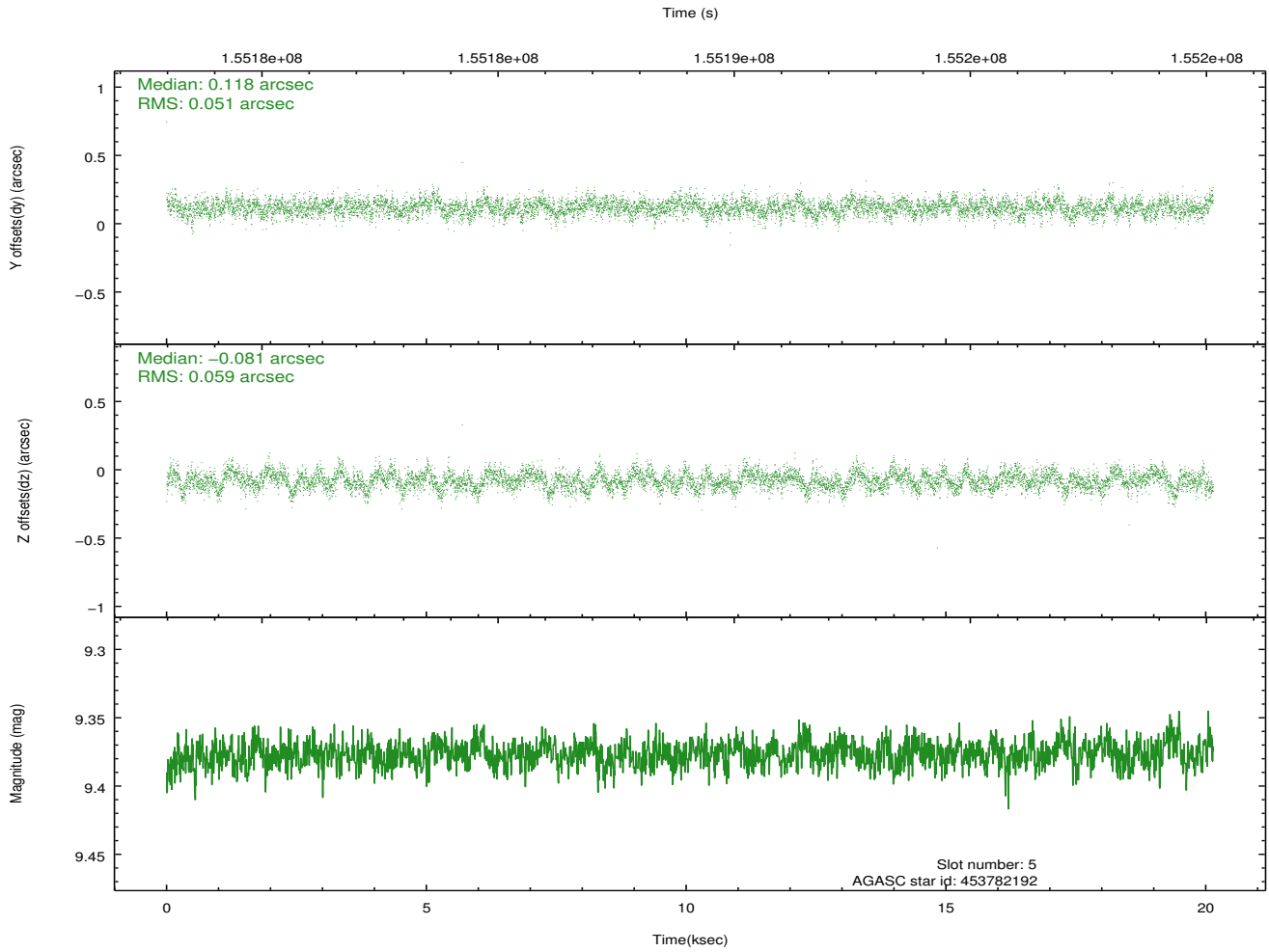
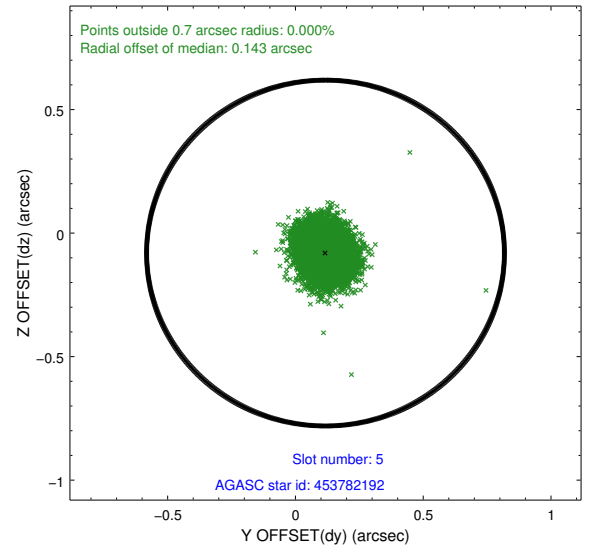
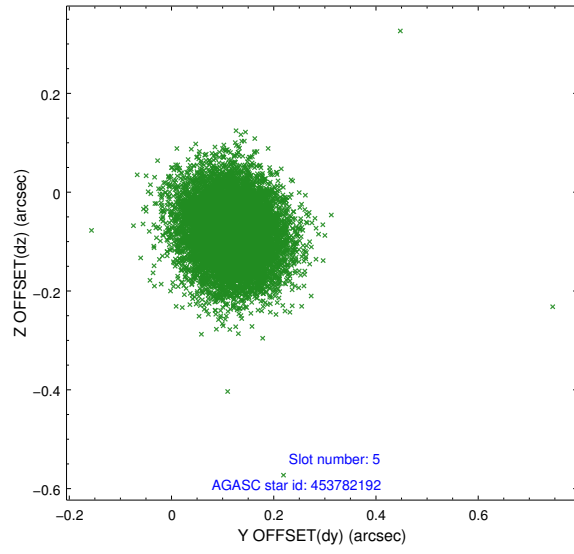
2.4.1 Slot 3



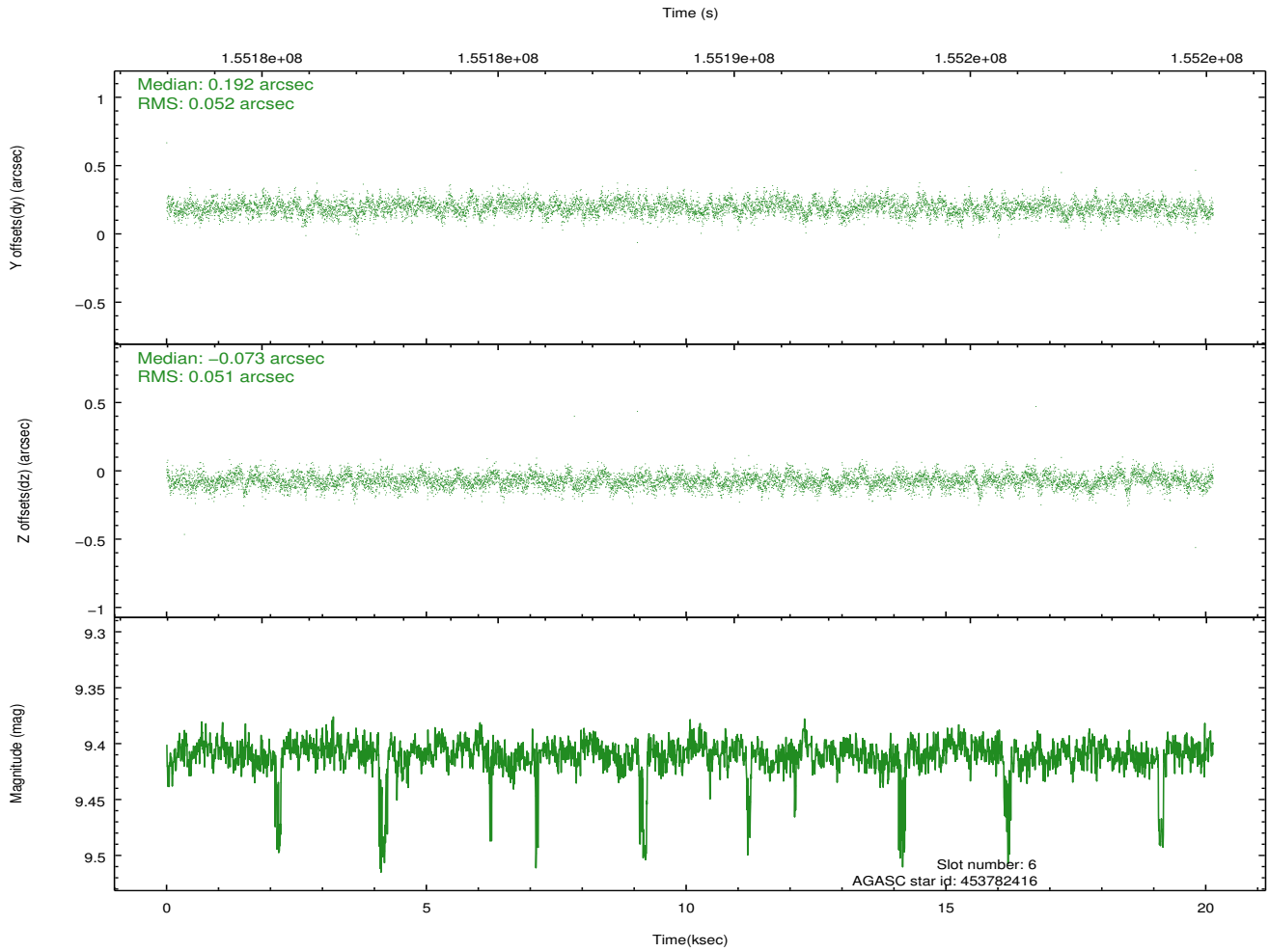
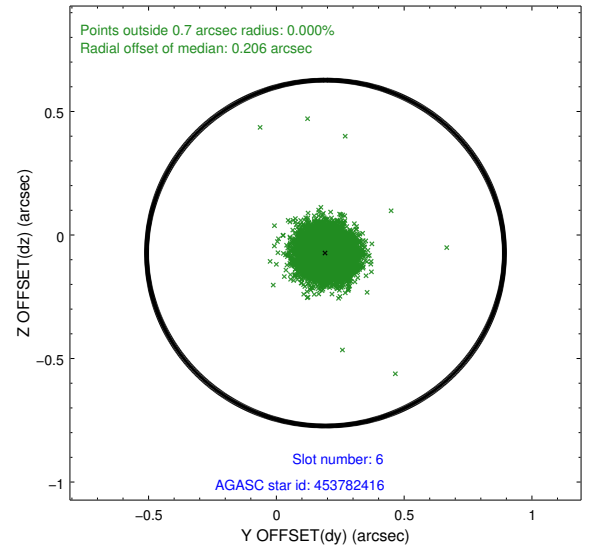
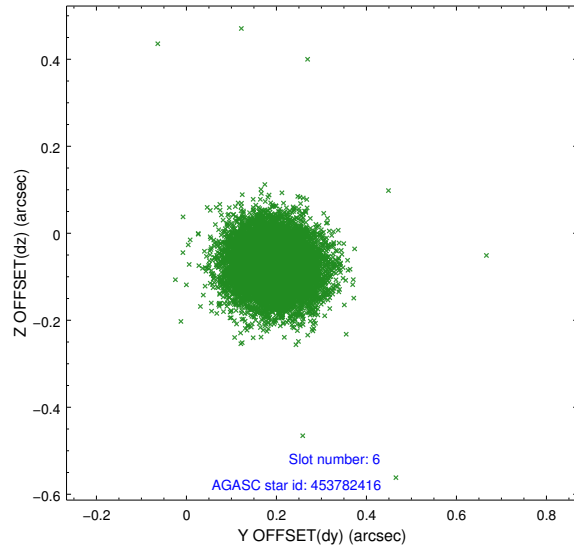
2.4.2 Slot 4



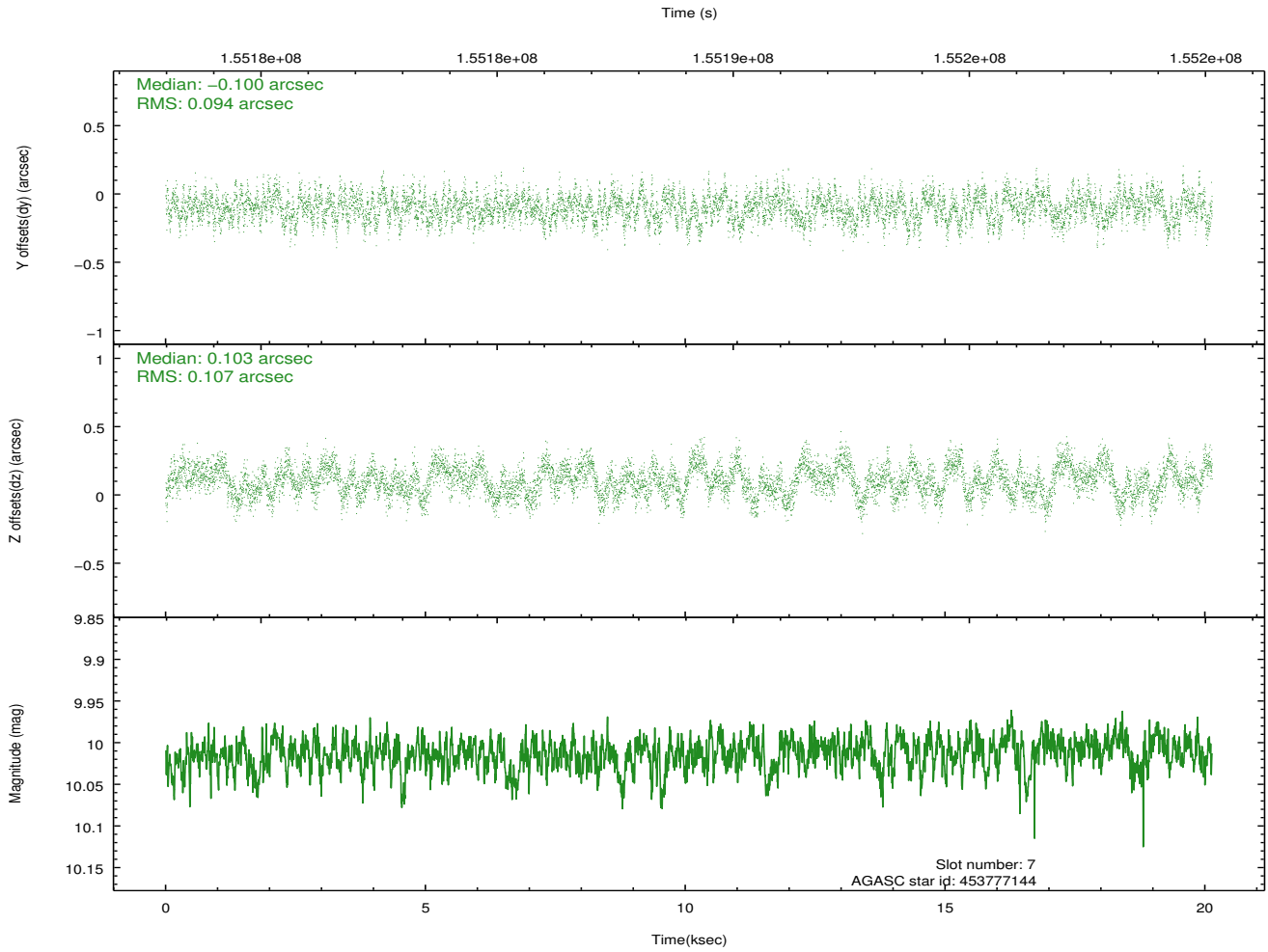
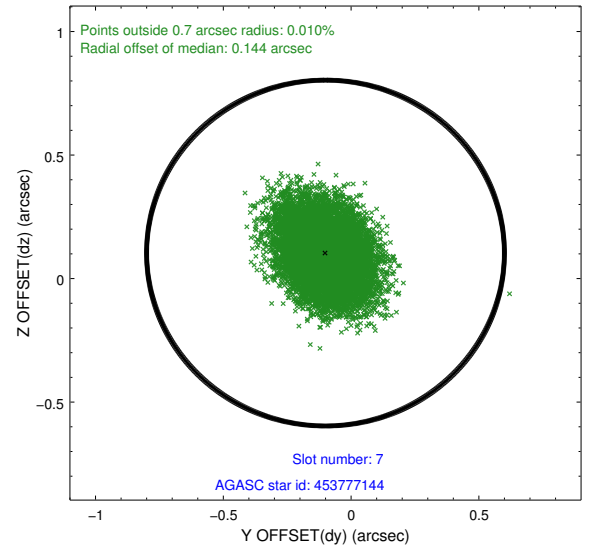
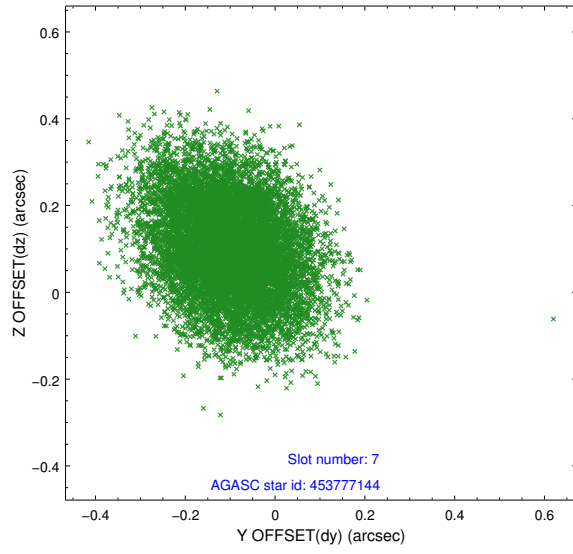
2.4.3 Slot 5



2.4.4 Slot 6

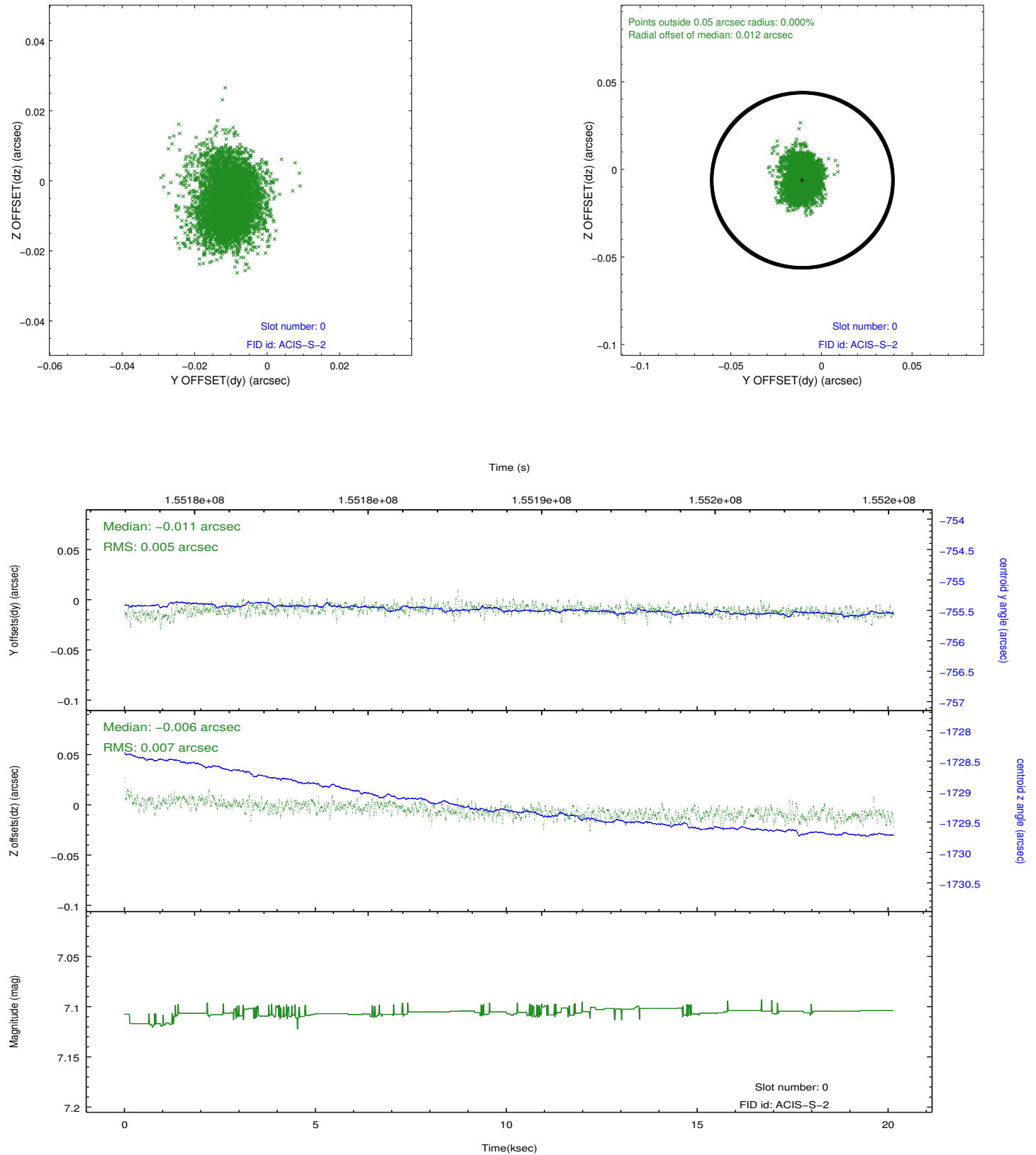


2.4.5 Slot 7

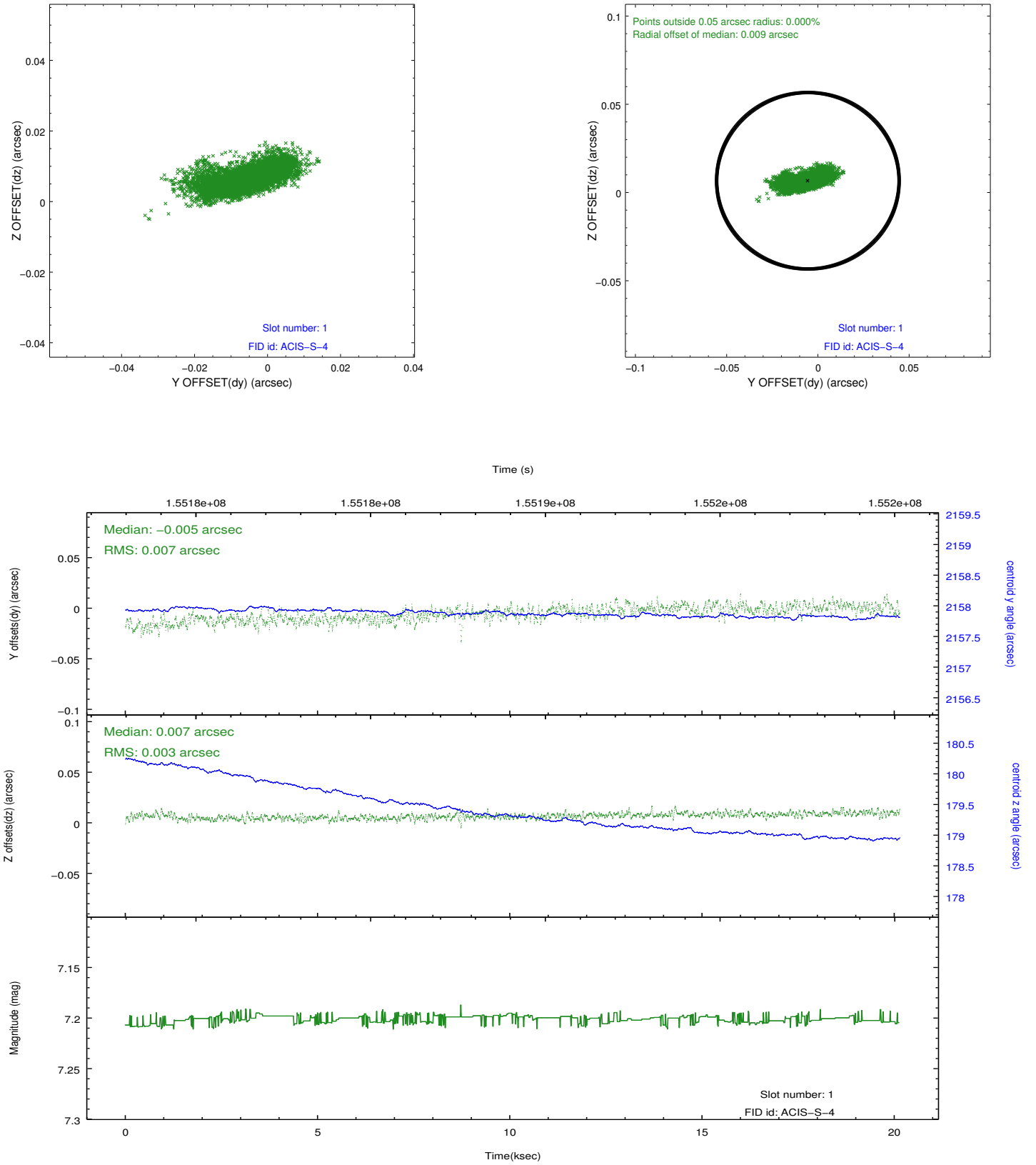


2.5 FID Slots

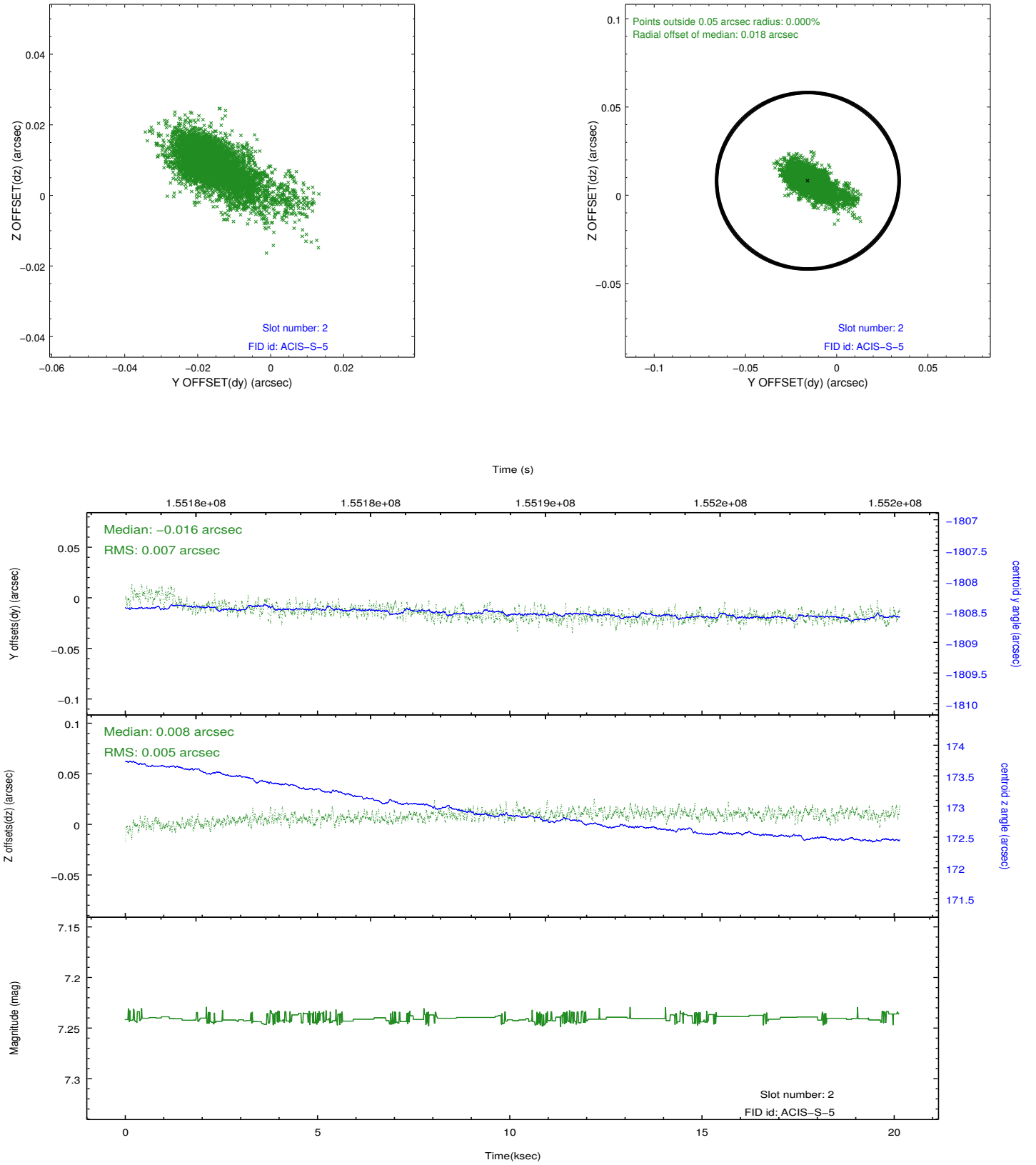
2.5.1 Slot 0



2.5.2 Slot 1



2.5.3 Slot 2



A Summary

A.1 Status

V&V Scientist	Jen Lauer
V&V Date (YYYY-MM-DD)	2012.10.28
V&V Edition	1
V&V Disposition and Status	OK
V&V Charge Time	20.14

A.2 Comments