

V&V Reference Report

L2 ASCDS Version : 7.6.9

Observation 3041 - L2 Version 001
Chandra X-Ray Center

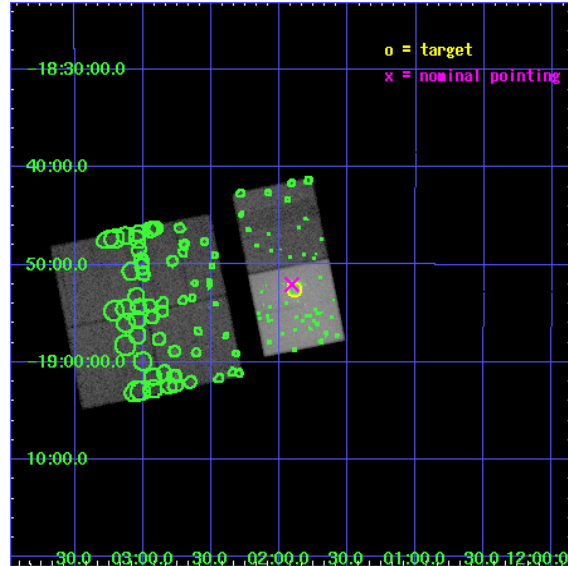
L2 Processing Date : Oct 26 2006

Contents

1	Front	2
2	OBI	3
2.1	OBI	3
2.1.1	Images	3
2.1.2	Bias	3
2.1.3	Parameters	4
2.1.4	Events	4
2.2	Compared Parameters	5
2.3	Aspect	6
2.4	Star Slots	9
2.4.1	Slot 3	9
2.4.2	Slot 4	10
2.4.3	Slot 5	11
2.4.4	Slot 6	12
2.4.5	Slot 7	13
2.5	FID Slots	14
2.5.1	Slot 0	14
2.5.2	Slot 1	15
2.5.3	Slot 2	16
3	Point Sources	17
A	Summary	18
A.1	Status	18
A.2	Comments	18

1 Front

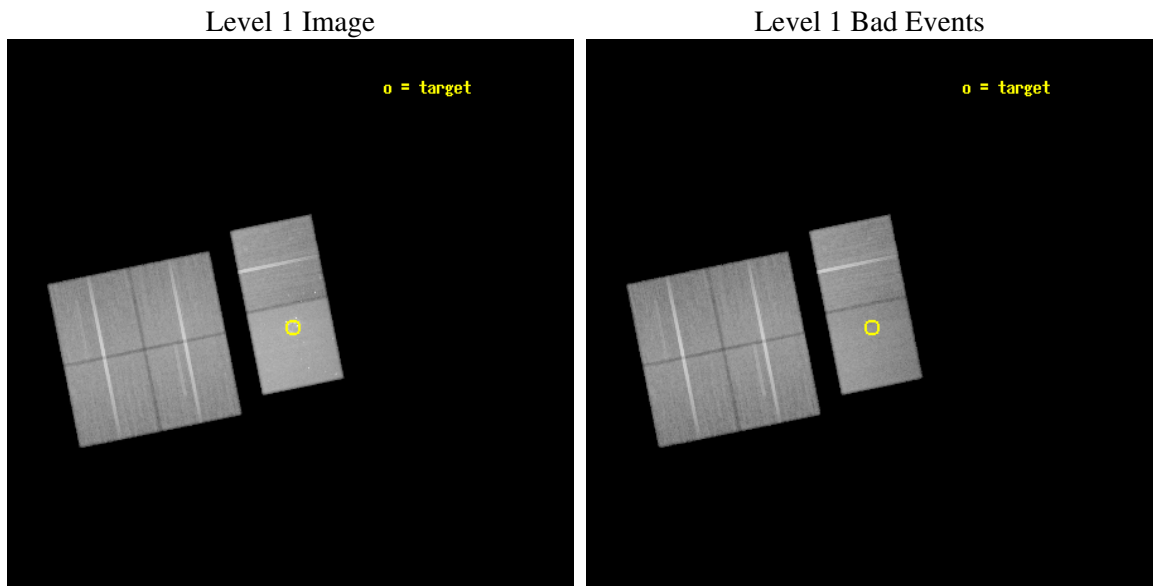
seq_num	700480
obs_id	3041
title	AN IN-DEPTH STUDY OF THE X-RAY SOURCE POPULATION AND HOT ISM OF THE ANTENNAE GALAXIES
observer	Dr Giuseppina Fabbiano
object	NGC 4038/NGC 4039
dtcycle	0
cycle	P
ra_targ	180.47375
dec_targ	-18.876528
ra_nom	180.47752854443
dec_nom	-18.867534702322
roll_nom	78.515483659368
revision	2
ontime	73846.399724901
livetime	72911.31214662
ontime0	73846.399724901
ontime1	73846.399724901
ontime2	73846.399724901
ontime3	73846.399724901
ontime6	73846.399724901
ontime7	73846.399724901
l2events	555719



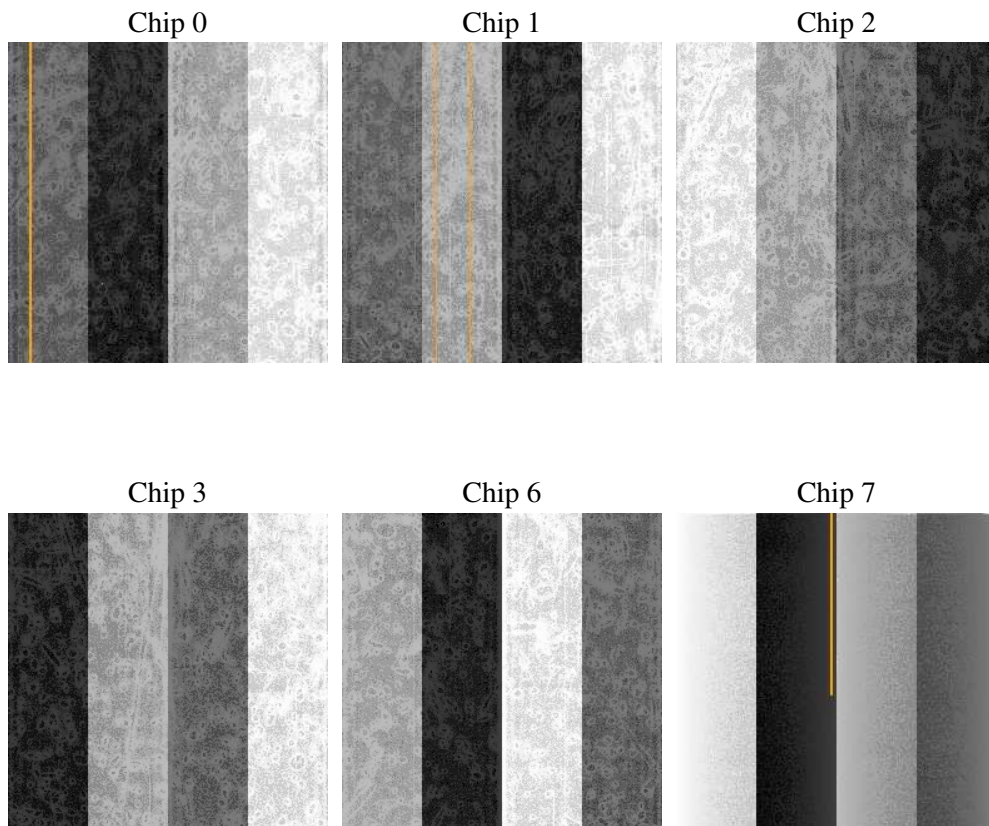
2 OBI

2.1 OBI

2.1.1 Images



2.1.2 Bias



2.1.3 Parameters

obi_num	1
ascdsver	7.6.9
caldsver	3.2.3
date	2006-10-26T20:40:50
revision	2

sched_exp_time	73735.629000
ontime	74186.48144874
ontime0	74186.481418848
ontime1	74186.481418848
ontime2	74186.481418848
ontime3	74186.481418848
ontime6	74186.481418848
ontime7	74186.48144874
l1events	2920580

2.1.4 Events

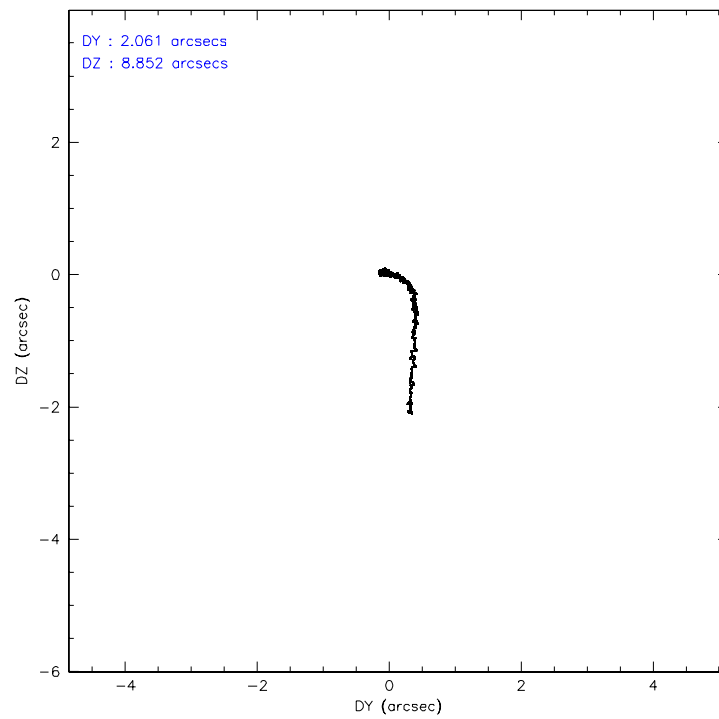
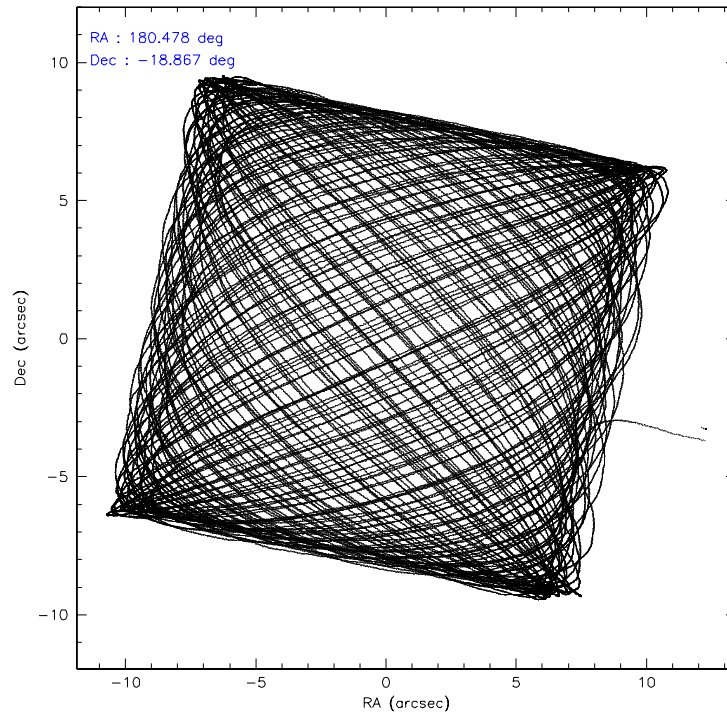
	ccd 0	ccd 1	ccd 2	ccd 3	ccd 6	ccd 7
level 1 events	432370	424267	453018	449607	470949	690369
rejected events	375162	365678	397800	394134	409796	377606
rejected %	86%	86%	87%	87%	87%	54%

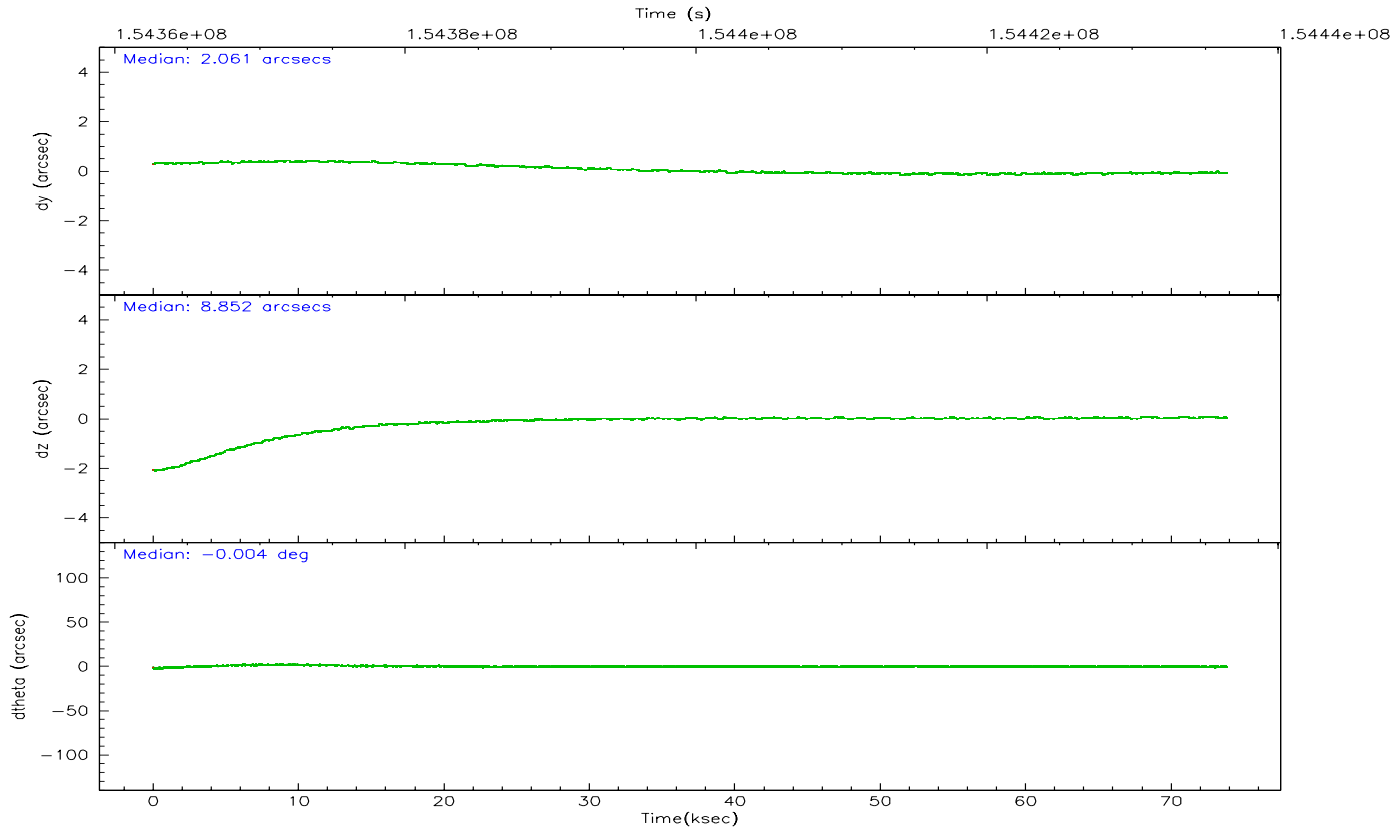
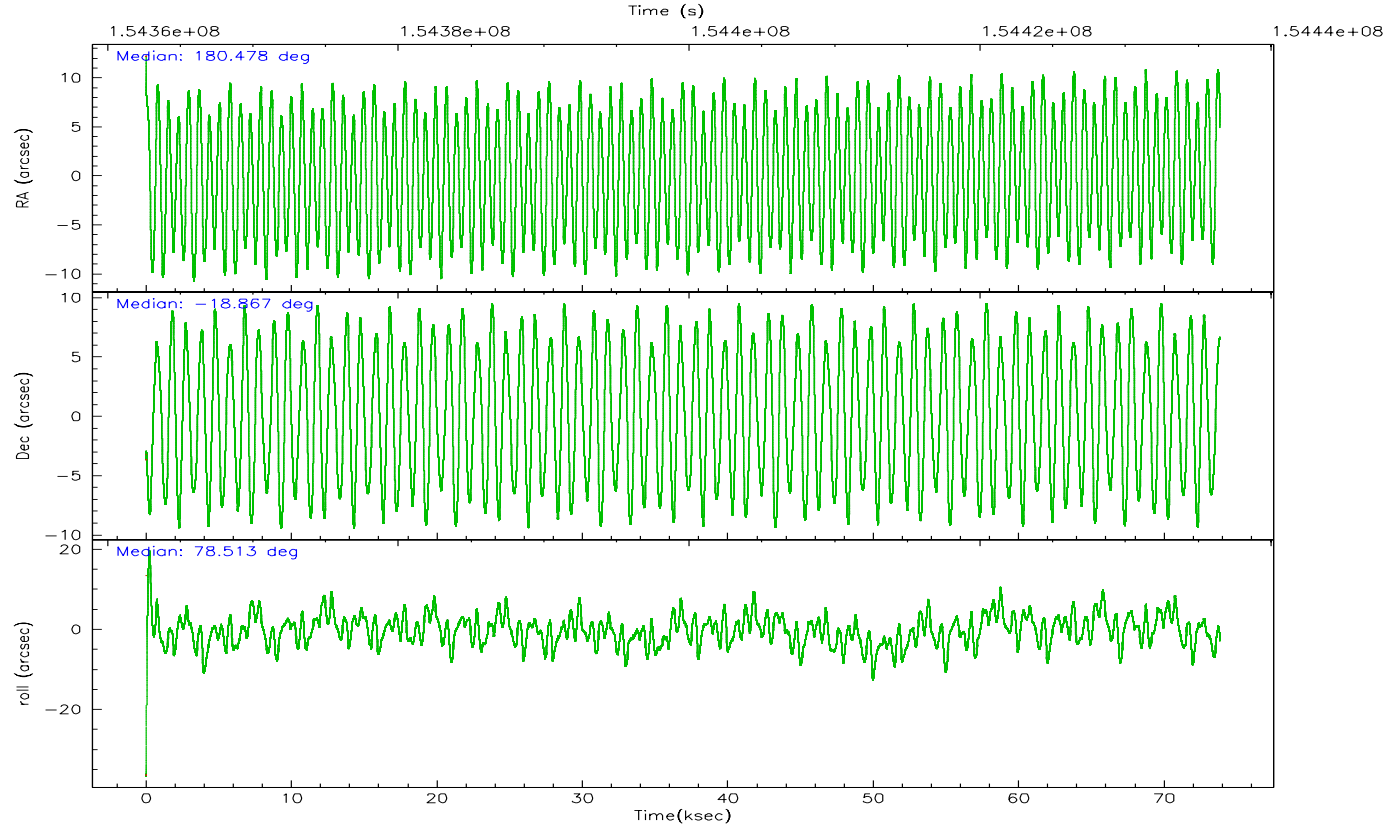
	ccd 0	ccd 1	ccd 2	ccd 3	ccd 6	ccd 7
grade 0 events	24905	23787	25576	25341	27472	29809
	5%	5%	5%	5%	5%	4%
grade 1 events	266	187	272	299	275	377
	0%	0%	0%	0%	0%	0%
grade 2 events	12196	12666	10991	10713	12003	75654
	2%	2%	2%	2%	2%	10%
grade 3 events	5414	5750	5121	5236	5477	18984
	1%	1%	1%	1%	1%	2%
grade 4 events	5109	5708	5035	5180	5332	18466
	1%	1%	1%	1%	1%	2%
grade 5 events	18263	18586	16964	19538	20614	41534
	4%	4%	3%	4%	4%	6%
grade 6 events	9827	10933	8706	9234	11155	170927
	2%	2%	1%	2%	2%	24%
grade 7 events	356390	346650	380353	374066	388621	334618
	82%	81%	83%	83%	82%	48%

2.2 Compared Parameters

Parameter	Planned	Actual	Parameter	Planned	Actual
Instrument	ACIS	ACIS	Obspar format version number	6	6
Detector	ACIS-012367	ACIS-012367	Obspar file type	PREDICTED	ACTUAL
Grating	NONE	NONE	Obspar update status	NONE	UPDATED
Data mode	FAINT	FAINT	Number of optional ACIS chips dropped	0	0
Observation mode	POINTING	POINTING	On-chip summing requested	N	N
Pointing RA	180.487013	180.4775285444347	Subarray requested	NONE	NONE
Pointing Dec	-18.893239	-18.86753470232217	Alternating exposures requested	N	N
Pointing Roll	78.361930	78.51548365936826	Primary exposure time	0.000000	3.2
SIM focus pos (mm)	-0.684267	-0.6828225247311905			
SIM defocus (mm)	0	0.001444936568705701			
SIM translation stage pos (mm)	-190.132523	-190.1400660498719			
SIM translation stage offset (mm)	0	0.00754346686406393			
Observation start time	154362777.184000	154361559.61273			
Observation start date	2002-11-22T14:31:53	2002-11-22T14:12:39			
Observation end time	154436512.184000	154436827.41586			
Observation end date	2002-11-23T11:00:48	2002-11-23T11:07:07			
Read mode	TIMED	TIMED			

2.3 Aspect



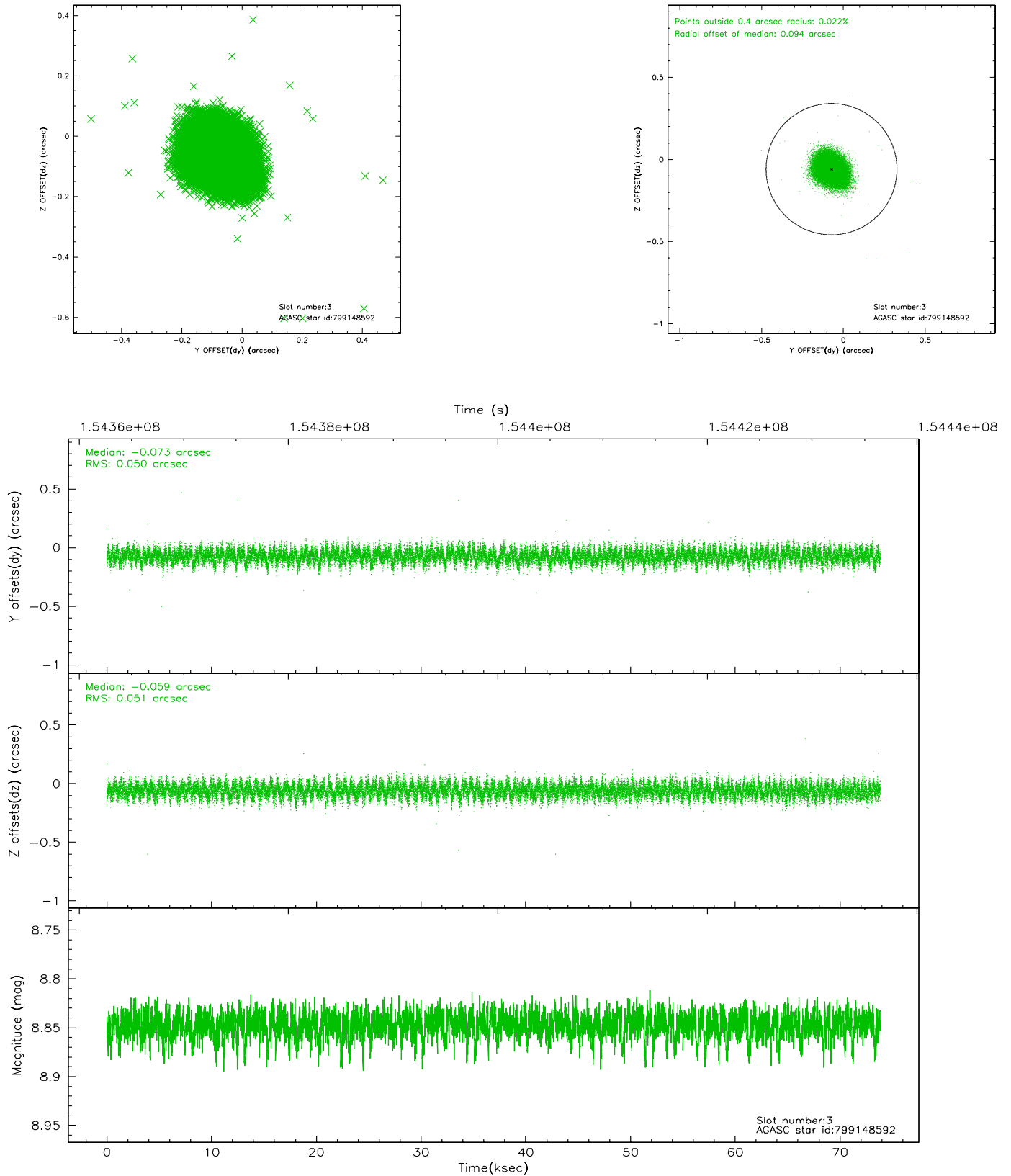


Slot Statistics

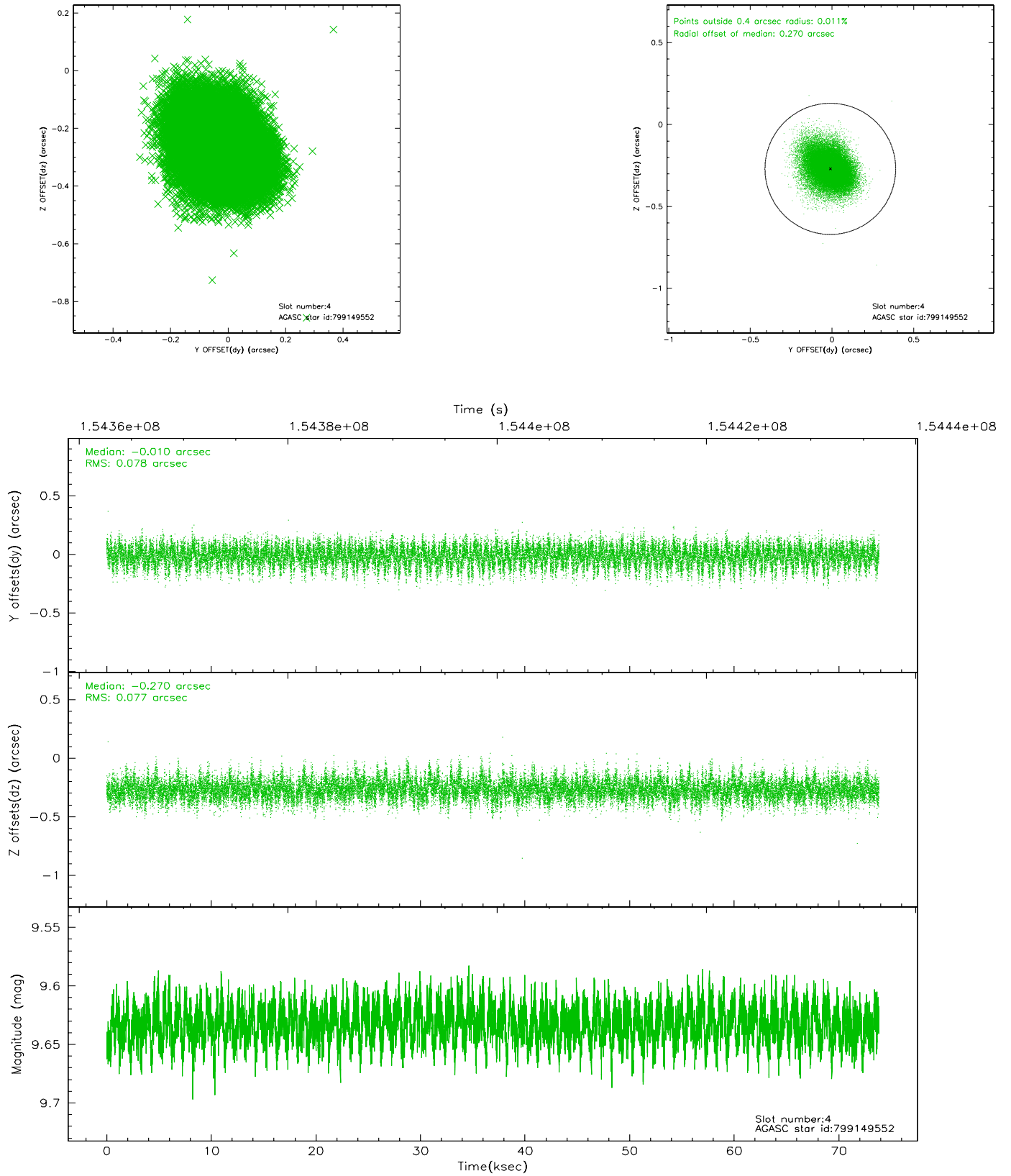
slot	status	id	mag	n_pts	med_dy	med_dz	dr1	dr2	ra	dec	mean_y	mean_z
0	FID	ACIS-S-2	7.11	18013	-0.024	0.010	0.011	0.023	0.000000	0.000000	-754.80	-1729.83
1	FID	ACIS-S-4	7.20	18012	-0.039	0.009	0.012	0.029	0.000000	0.000000	2158.49	178.71
2	FID	ACIS-S-5	7.23	18012	0.034	-0.009	0.008	0.016	0.000000	0.000000	-1807.66	172.31
3	GUIDE	799148592	8.85	36017	-0.073	-0.059	0.076	0.122	180.422651	-18.791183	314.89	289.67
4	GUIDE	799149552	9.63	35934	-0.010	-0.270	0.115	0.193	179.918855	-18.889841	-382.22	1897.60
5	GUIDE	799150224	9.92	35995	0.095	0.207	0.117	0.196	181.019441	-19.129543	-471.07	-1944.99
6	GUIDE	799152736	9.11	36014	-0.066	-0.034	0.073	0.119	180.259335	-18.516494	1170.34	1035.32
7	GUIDE	799158408	8.36	36018	0.058	0.158	0.058	0.094	180.413548	-19.338934	-1622.50	-78.52

2.4 Star Slots

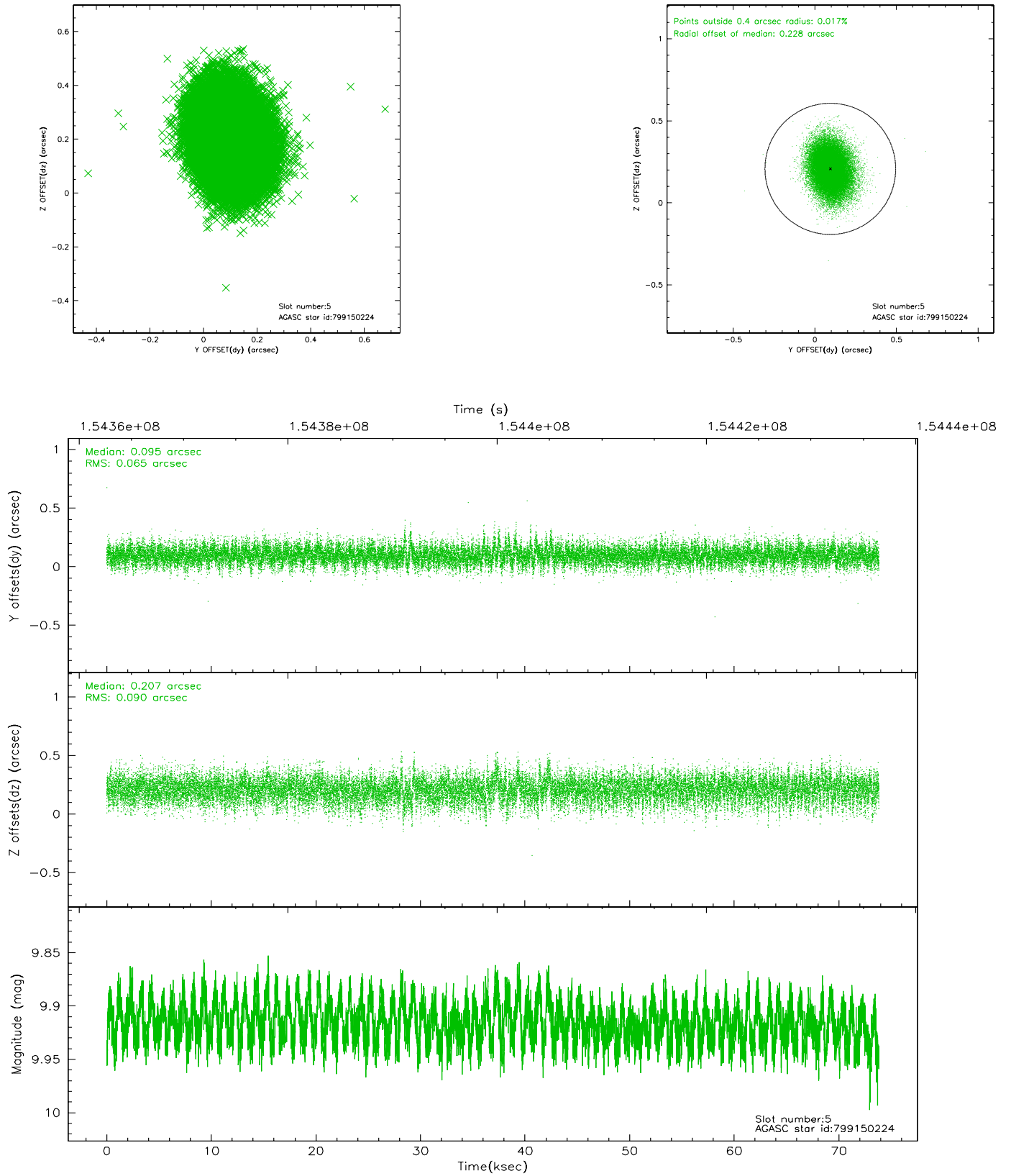
2.4.1 Slot 3



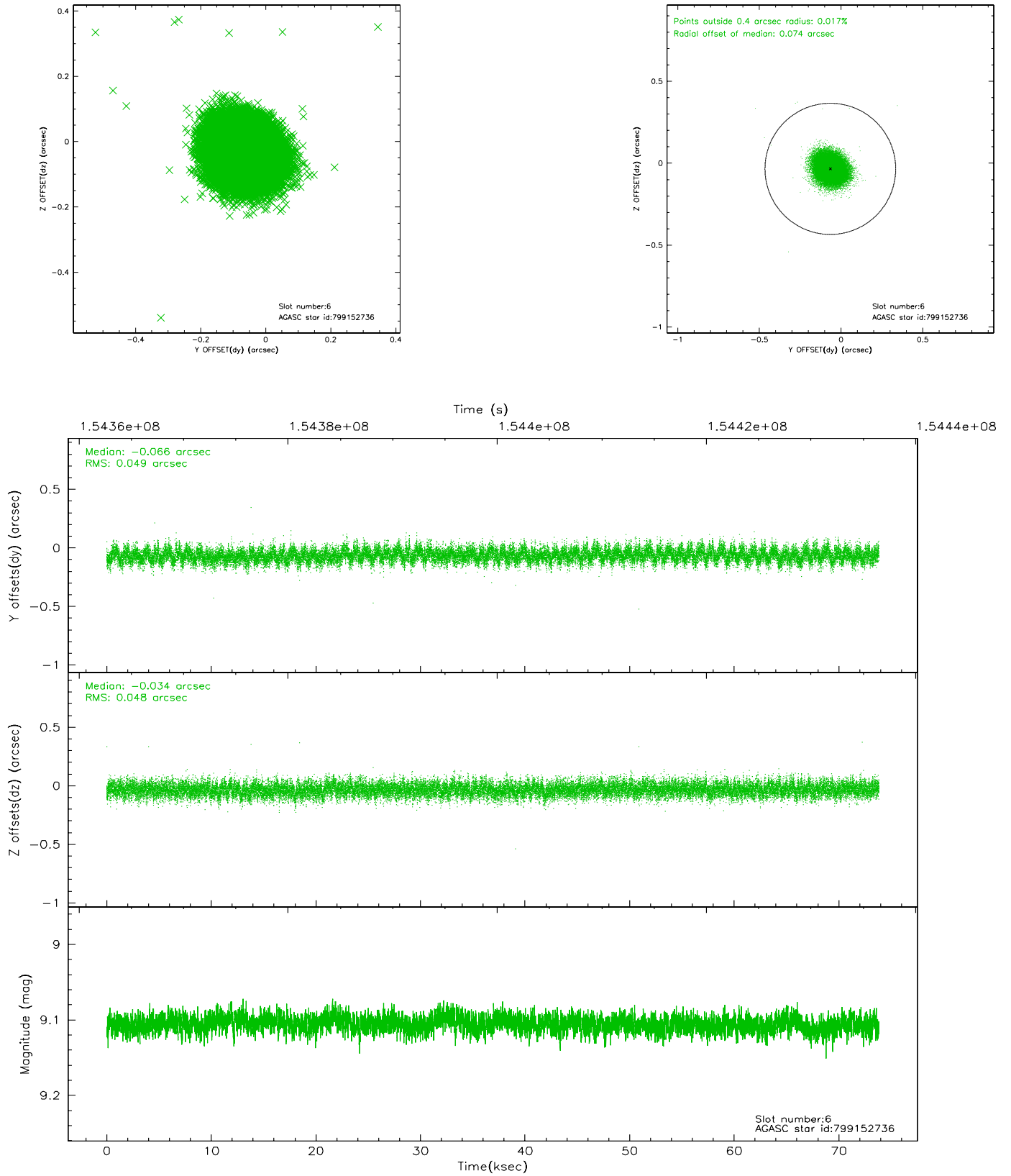
2.4.2 Slot 4



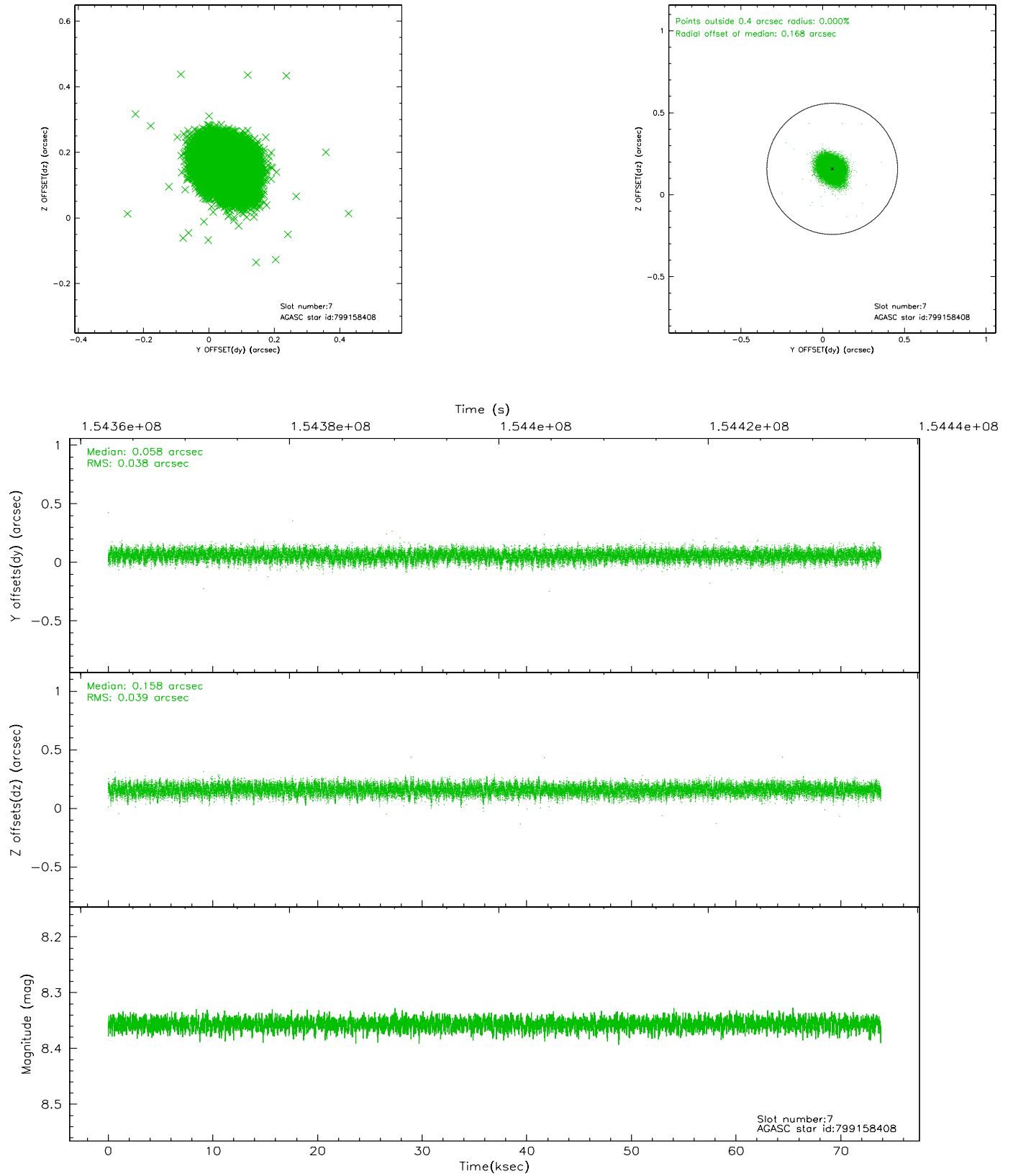
2.4.3 Slot 5



2.4.4 Slot 6

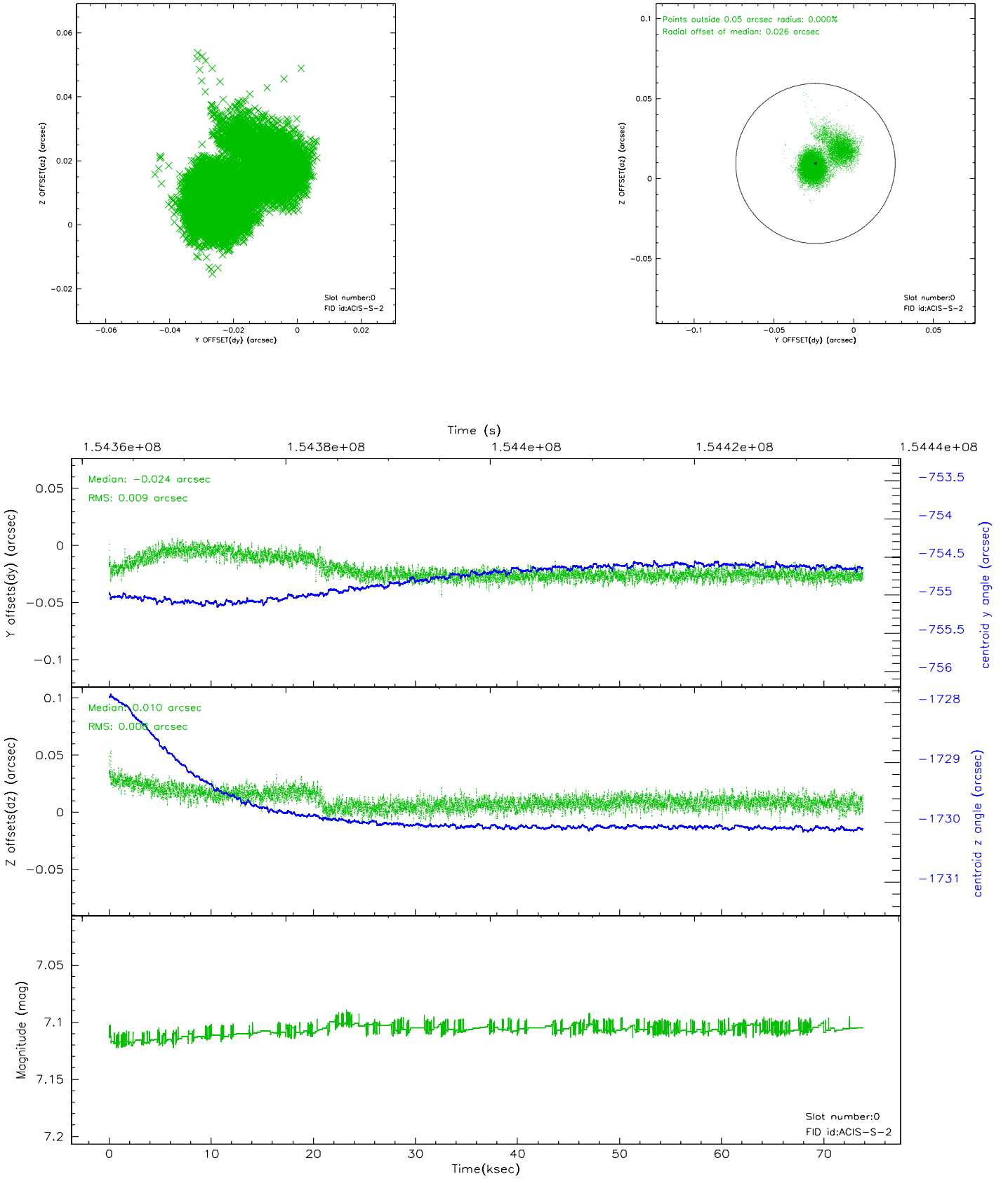


2.4.5 Slot 7

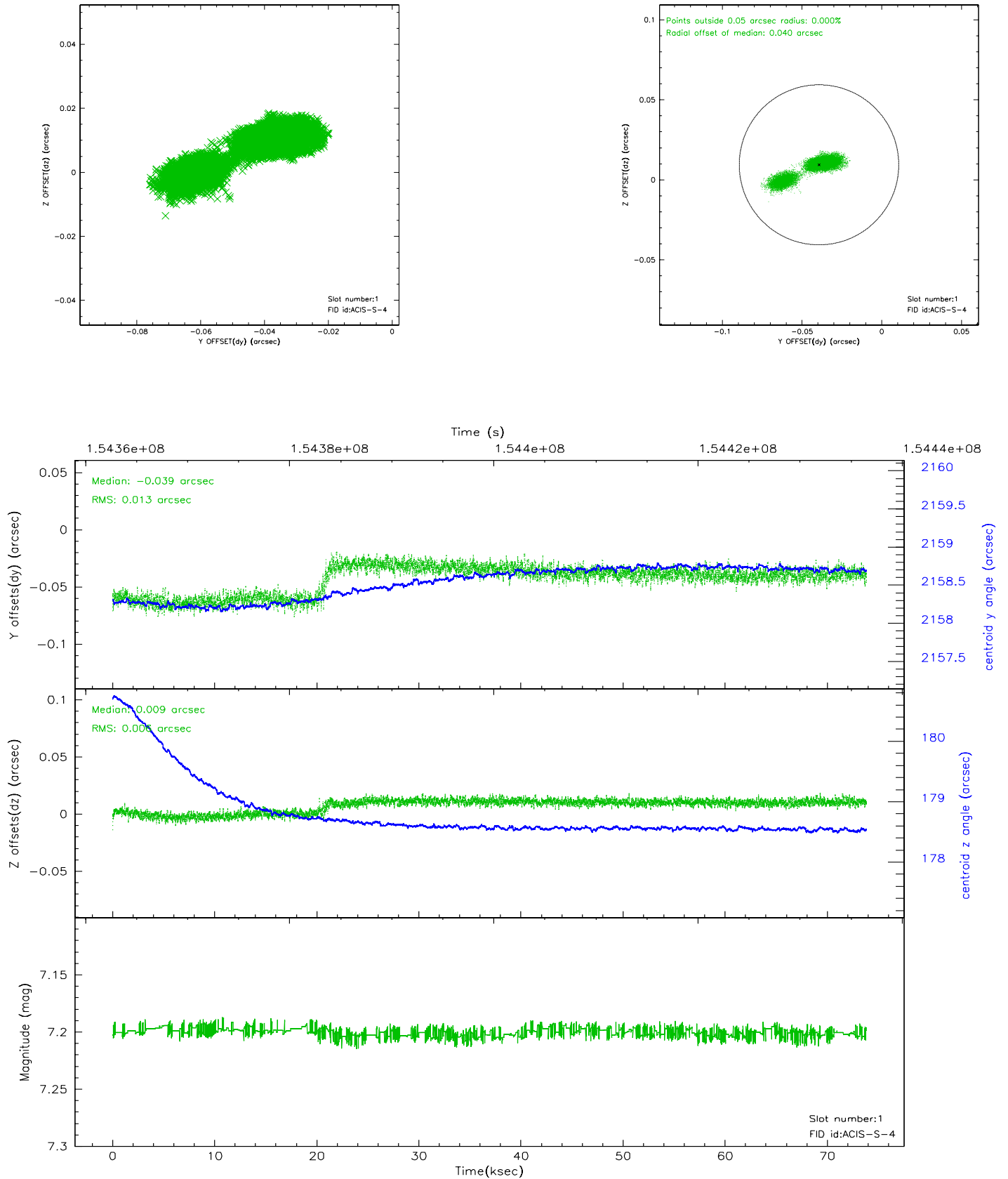


2.5 FID Slots

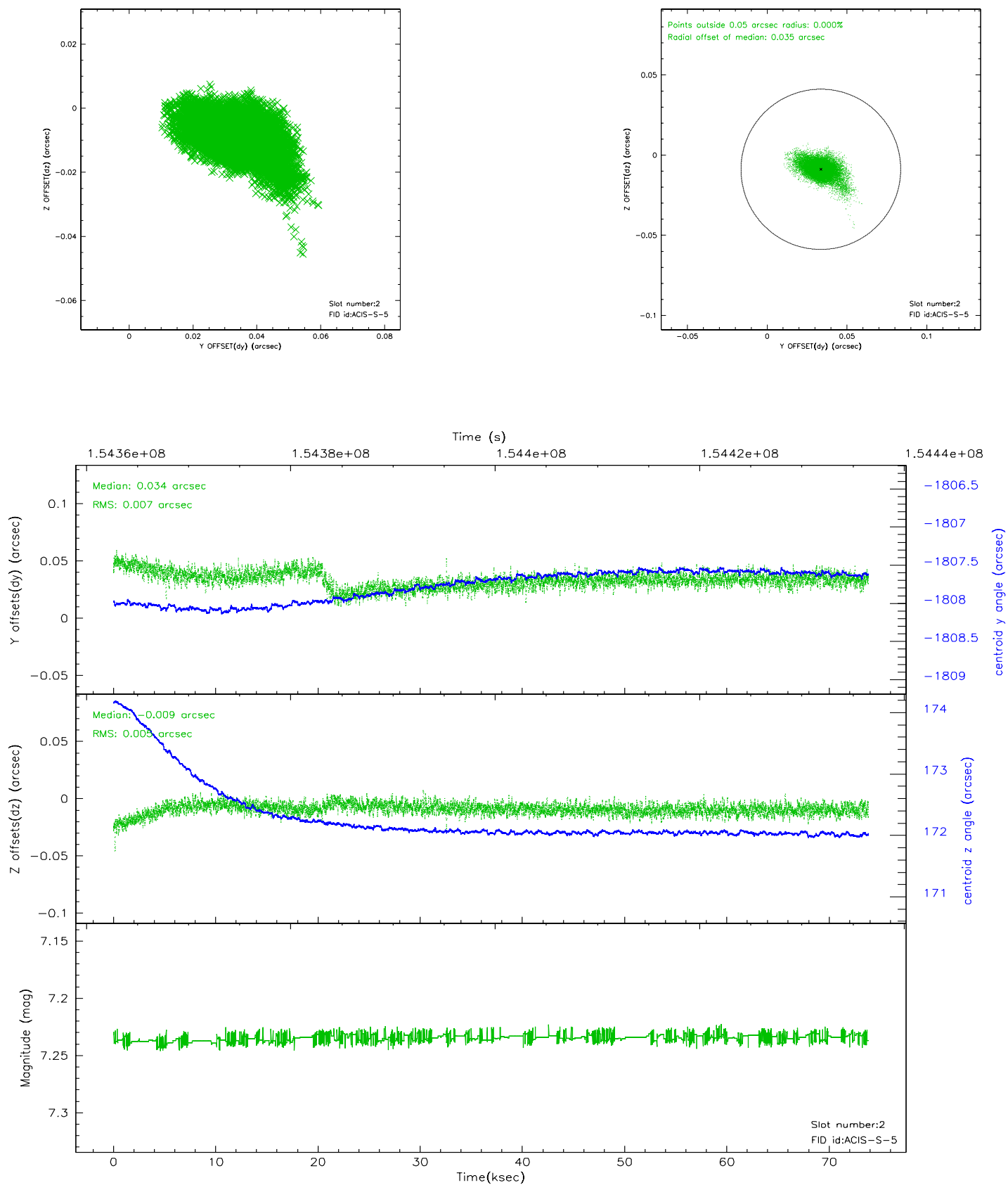
2.5.1 Slot 0



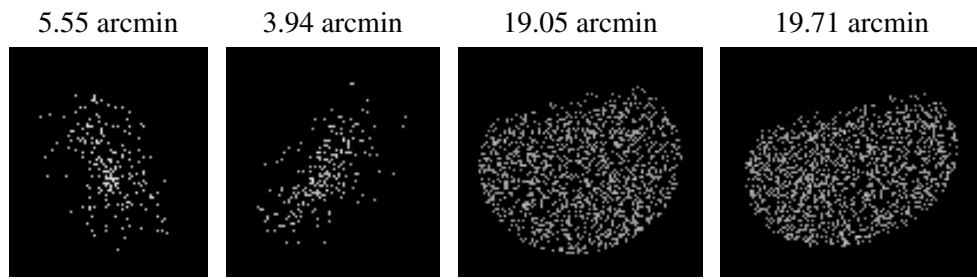
2.5.2 Slot 1



2.5.3 Slot 2



3 Point Sources



A Summary

A.1 Status

V&V Scientist	Jen Lauer
V&V Date (YYYY-MM-DD)	2006.10.27
V&V Edition	1
V&V Disposition and Status	OK
V&V Charge Time	73.846

A.2 Comments

Monitor constraint met.