

V&V Reference Report

L2 ASCDS Version : 7.6.9

Observation 3038 - L2 Version 001
Chandra X-Ray Center

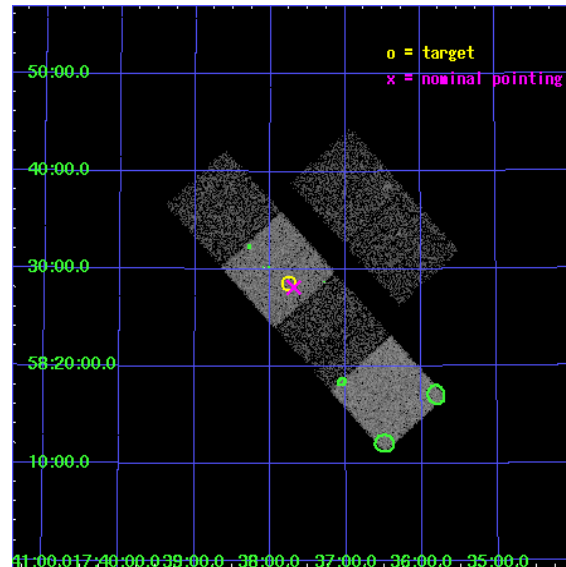
L2 Processing Date : Sep 30 2006

Contents

1	Front	2
2	OBI	3
2.1	OBI	3
2.1.1	Images	3
2.1.2	Bias	3
2.1.3	Parameters	4
2.1.4	Events	4
2.2	Compared Parameters	5
2.3	Aspect	6
2.4	Star Slots	9
2.4.1	Slot 3	9
2.4.2	Slot 4	10
2.4.3	Slot 5	11
2.4.4	Slot 6	12
2.4.5	Slot 7	13
2.5	FID Slots	14
2.5.1	Slot 0	14
2.5.2	Slot 1	15
2.5.3	Slot 2	16
3	Point Sources	17
A	Summary	18
A.1	Status	18
A.2	Comments	18

1 Front

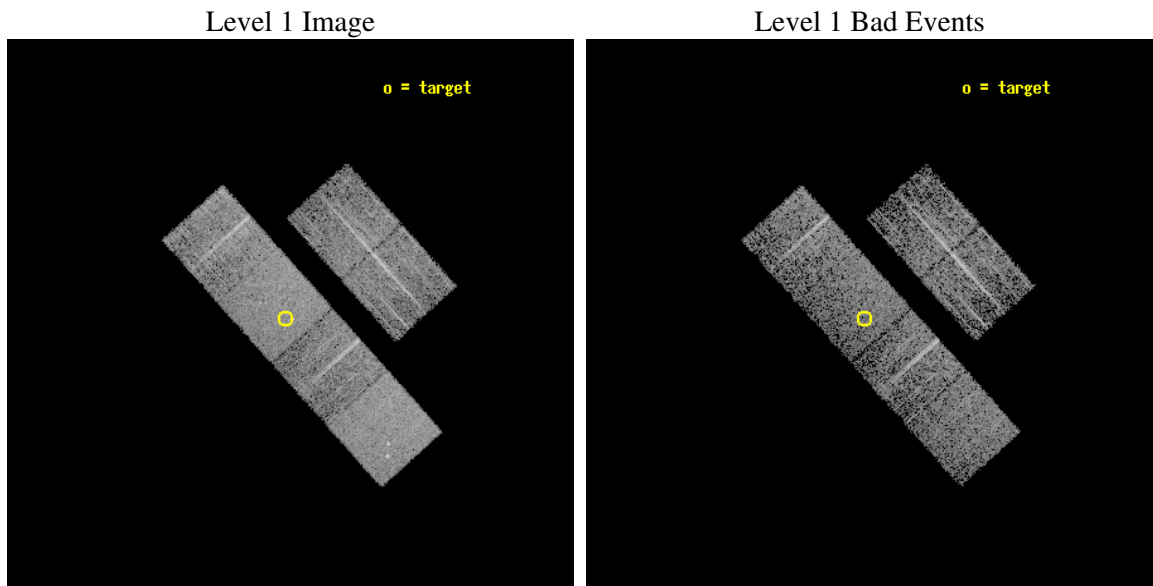
seq_num	700477
obs_id	3038
title	A CHANDRA AND XMM-NEWTON STUDY OF THE MOST DISTANT QUASARS: X-RAYING THE FIRST MASSIVE BLACK HOLES
observer	Prof. William Brandt
object	SDSS173744+582829
dtcycle	0
cycle	P
ra_targ	264.437083
dec_targ	58.474861
ra_nom	264.422233257
dec_nom	58.46888722528
roll_nom	227.97672710132
revision	2
ontime	4675.1999825835
livetime	4615.9997853366
ontime2	4675.1999825835
ontime3	4675.1999825835
ontime5	4675.1999825835
ontime6	4675.1999825835
ontime7	4675.1999825835
ontime8	4675.1999825835
l2events	42826



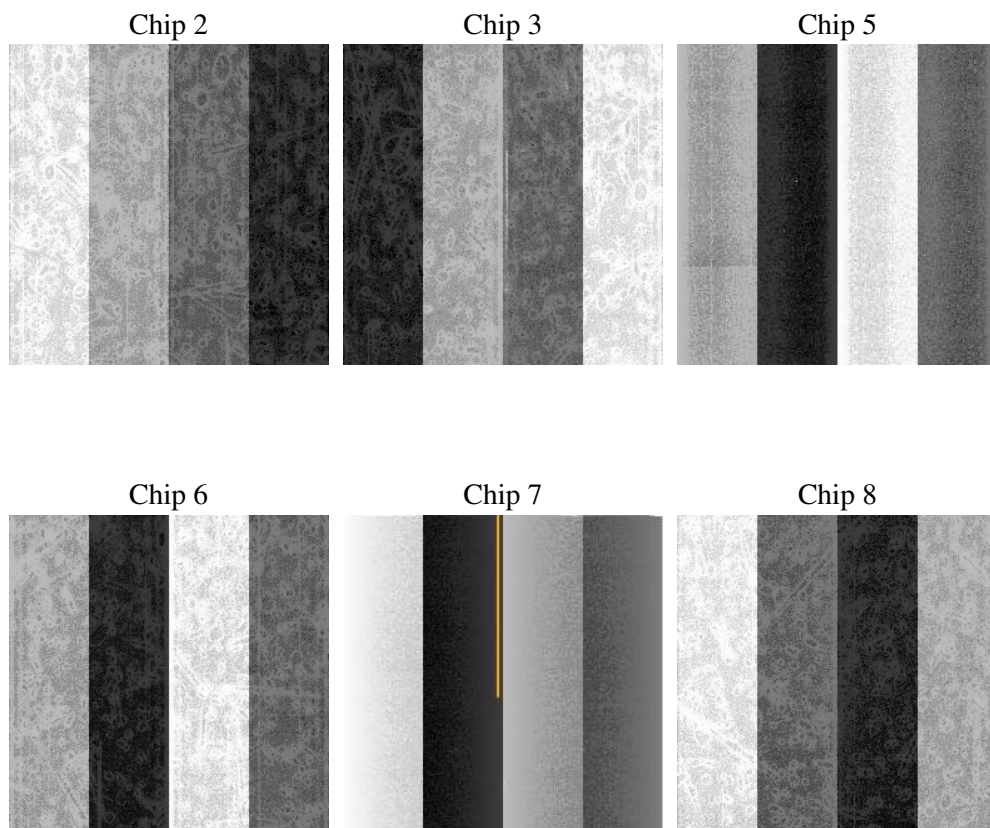
2 OBI

2.1 OBI

2.1.1 Images



2.1.2 Bias



2.1.3 Parameters

obi_num	0
ascdsver	7.6.9
caldbver	3.2.3
date	2006-09-30T06:53:23
revision	2

sched_exp_time	4500.000000
ontime	6264.8637379706
ontime2	6264.8637379706
ontime3	6264.8637379706
ontime5	6264.8637379706
ontime6	6264.8637379706
ontime7	6264.8637379706
ontime8	6264.8637379706
l1events	255031

2.1.4 Events

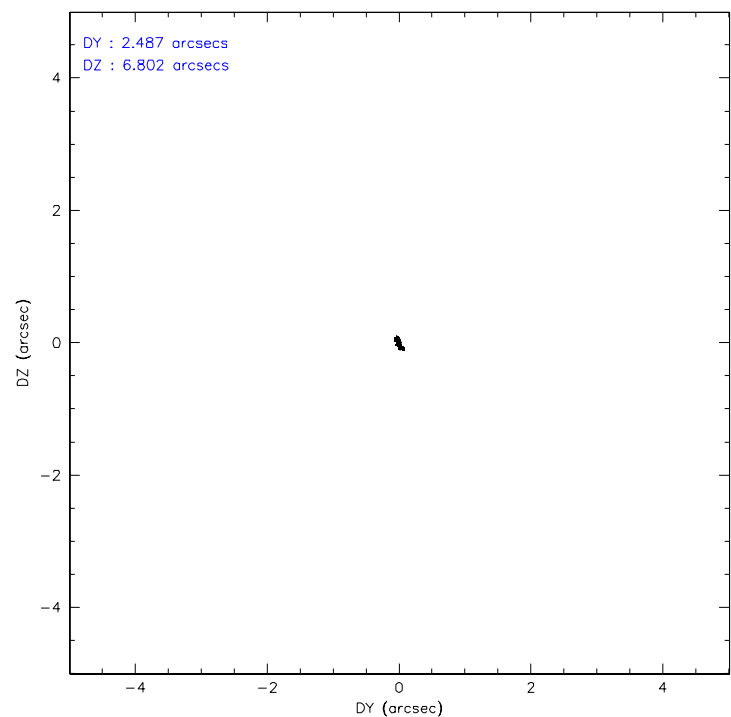
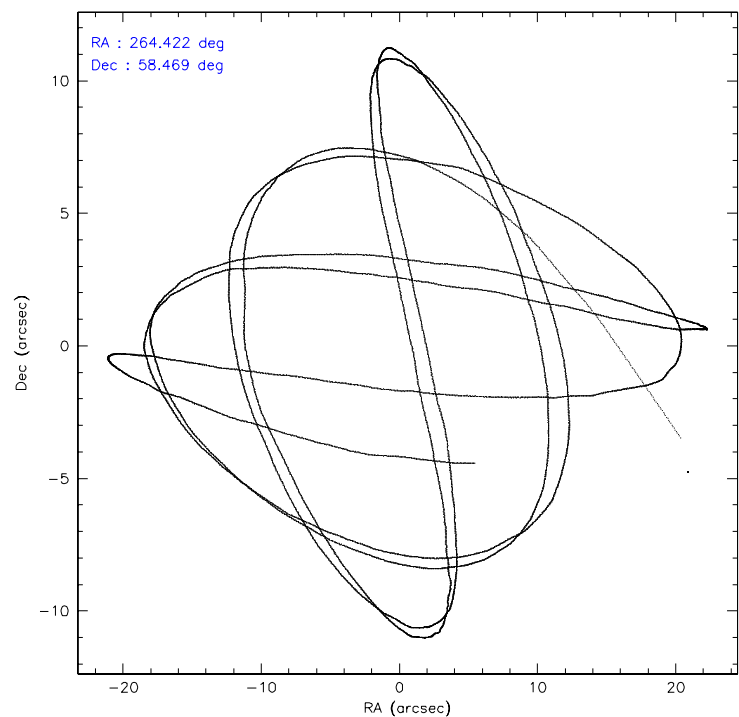
	ccd 2	ccd 3	ccd 5	ccd 6	ccd 7	ccd 8
level 1 events	37322	35583	52319	36758	48028	45021
rejected events	33767	32177	35134	33275	33891	37303
rejected %	90%	90%	67%	90%	70%	82%

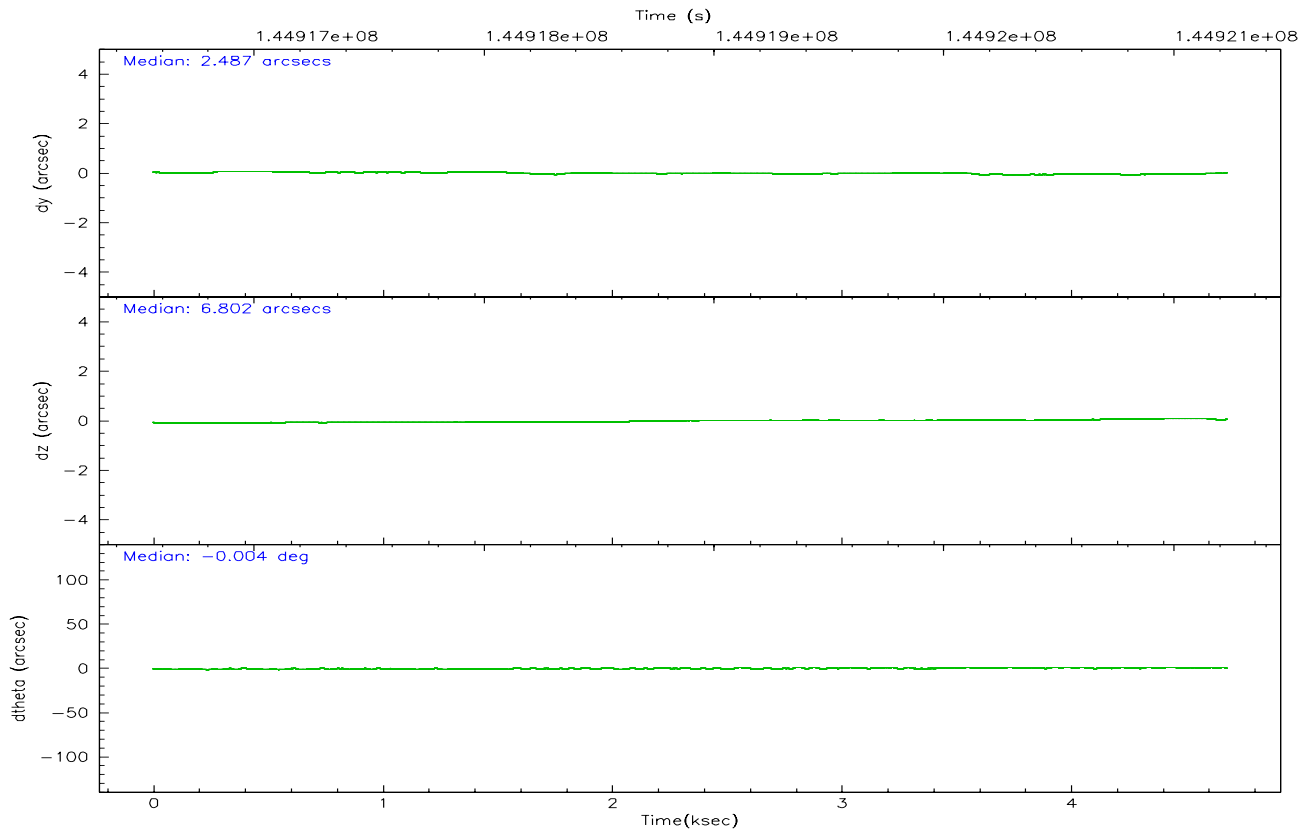
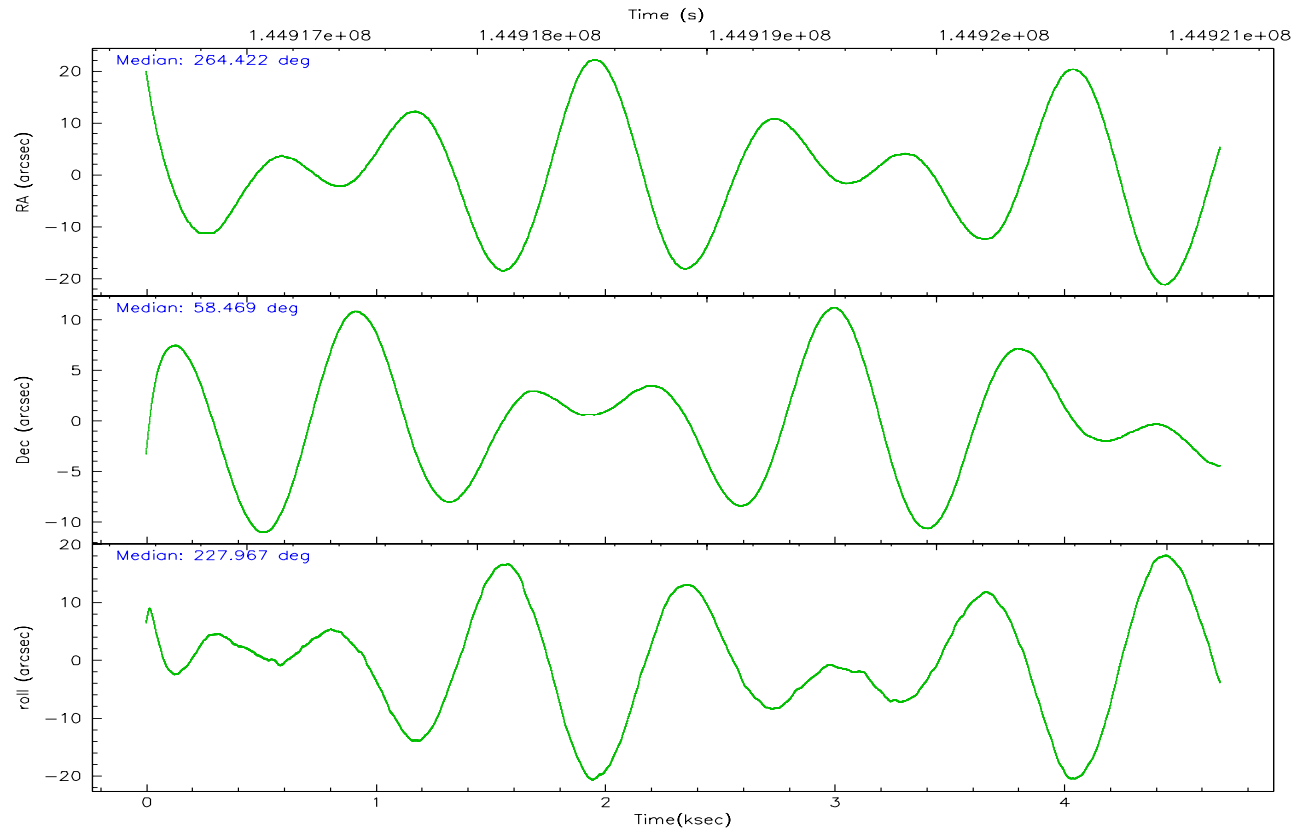
	ccd 2	ccd 3	ccd 5	ccd 6	ccd 7	ccd 8
grade 0 events	2140	2046	1807	1922	1240	3628
	5%	5%	3%	5%	2%	8%
grade 1 events	16	20	108	15	27	34
	0%	0%	0%	0%	0%	0%
grade 2 events	936	879	7022	1003	4660	2145
	2%	2%	13%	2%	9%	4%
grade 3 events	431	425	552	434	953	1176
	1%	1%	1%	1%	1%	2%
grade 4 events	398	448	548	436	960	1114
	1%	1%	1%	1%	1%	2%
grade 5 events	1330	1503	2546	1607	3192	2057
	3%	4%	4%	4%	6%	4%
grade 6 events	827	778	13126	934	11031	2466
	2%	2%	25%	2%	22%	5%
grade 7 events	31244	29484	26610	30407	25965	32401
	83%	82%	50%	82%	54%	71%

2.2 Compared Parameters

Parameter	Planned	Actual	Parameter	Planned	Actual
Instrument	ACIS	ACIS	Obspar format version number	6	6
Detector	ACIS-235678	ACIS-235678	Obspar file type	PREDICTED	ACTUAL
Grating	NONE	NONE	Obspar update status	NONE	UPDATED
Data mode	FAINT	FAINT	Number of optional ACIS chips dropped	0	0
Observation mode	POINTING	POINTING	On-chip summing requested	N	N
Pointing RA	264.432660	264.4222332570033	Subarray requested	NONE	NONE
Pointing Dec	58.495622	58.46888722528018	Alternating exposures requested	N	N
Pointing Roll	227.811146	227.9767271013192	Primary exposure time	0.000000	3.2
SIM focus pos (mm)	-0.684267	-0.6828225247311905			
SIM defocus (mm)	0	0.001444936568705701			
SIM translation stage pos (mm)	-190.132523	-190.1400660498719			
SIM translation stage offset (mm)	0	0.00754346686406393			
Observation start time	144916737.184000	144914877.34661			
Observation start date	2002-08-05T06:37:53	2002-08-05T06:07:57			
Observation end time	144921237.184000	144921589.55939			
Observation end date	2002-08-05T07:52:53	2002-08-05T07:59:49			
Read mode	TIMED	TIMED			

2.3 Aspect



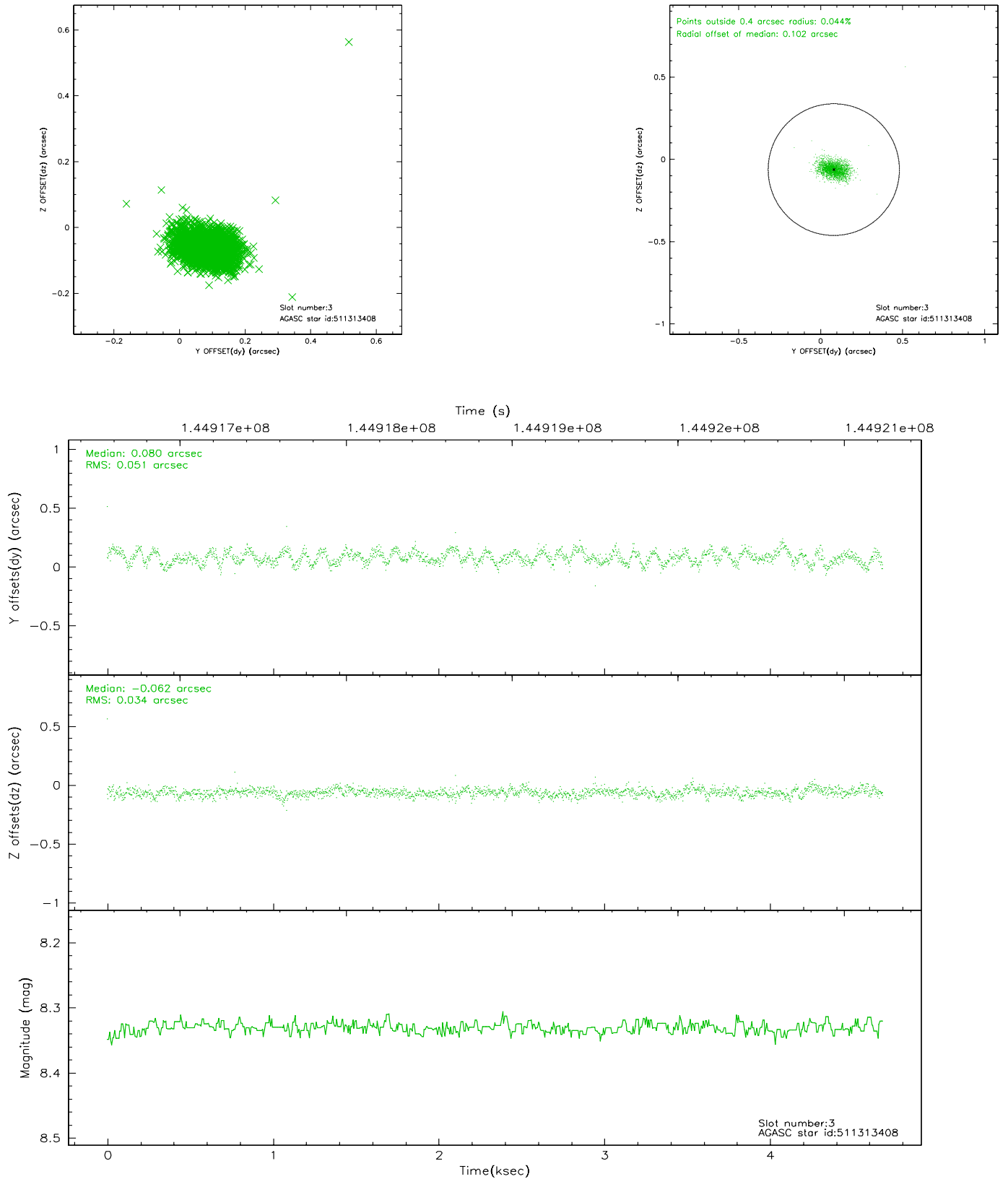


Slot Statistics

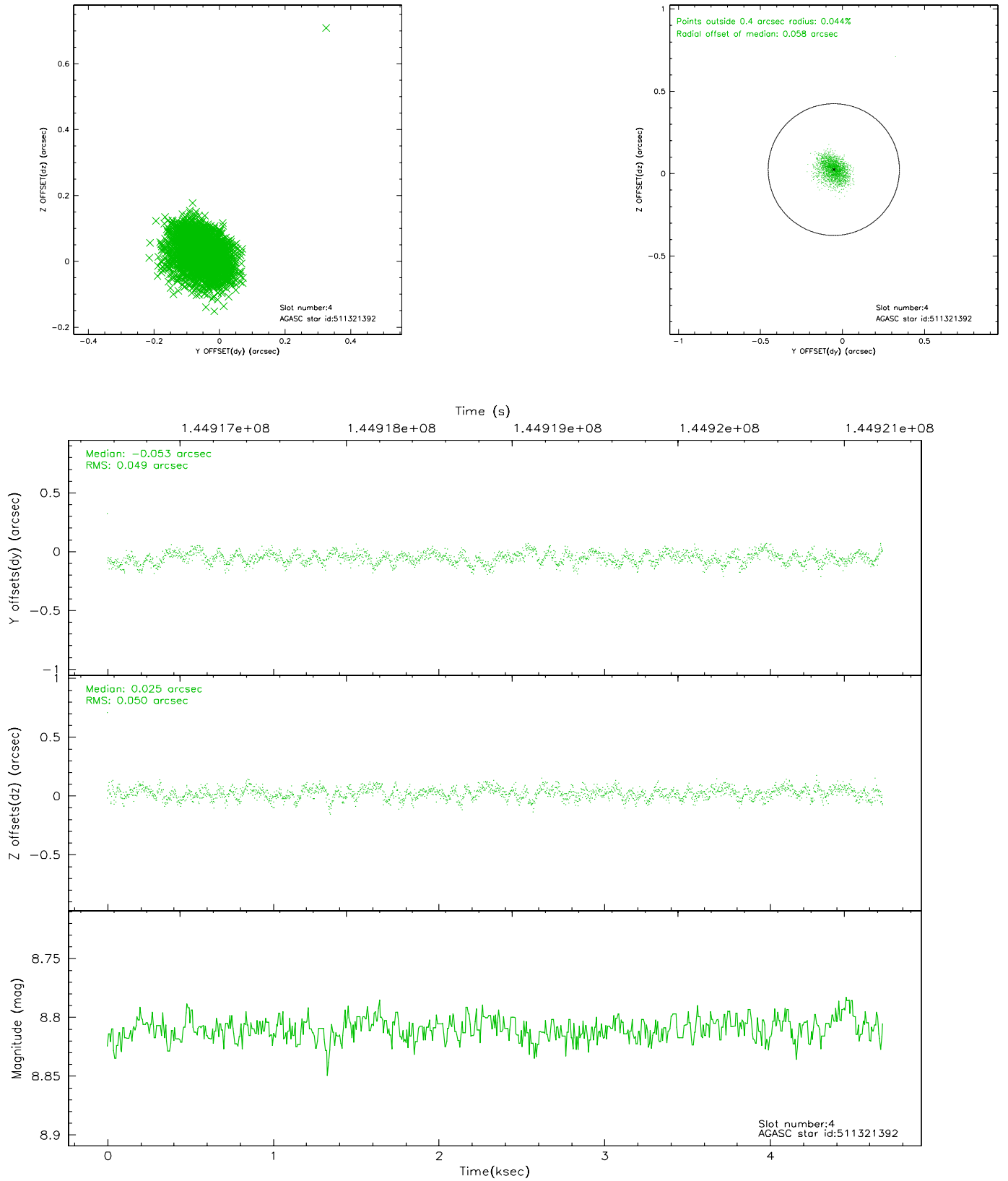
slot	status	id	mag	n_pts	med_dy	med_dz	dr1	dr2	ra	dec	mean_y	mean_z
0	FID	ACIS-S-2	7.11	1142	-0.015	0.034	0.006	0.010	0.000000	0.000000	-755.11	-1727.92
1	FID	ACIS-S-4	7.20	1142	-0.067	-0.002	0.005	0.009	0.000000	0.000000	2157.51	179.19
2	FID	ACIS-S-5	7.24	1142	0.051	-0.024	0.006	0.010	0.000000	0.000000	-1806.22	174.31
3	GUIDE	511313408	8.33	2284	0.080	-0.062	0.063	0.103	265.715436	58.685119	-2134.16	1305.84
4	GUIDE	511321392	8.81	2285	-0.053	0.025	0.073	0.115	265.016349	58.167353	126.65	1613.39
5	GUIDE	511319096	9.15	2285	0.062	0.043	0.078	0.122	264.423108	59.135941	-1695.59	-1559.56
6	GUIDE	511314128	9.32	2285	-0.004	-0.014	0.092	0.149	263.451193	58.779394	462.88	-2051.37
7	GUIDE	511189344	9.51	2283	-0.083	0.006	0.086	0.143	263.131545	58.437038	1785.76	-1690.23

2.4 Star Slots

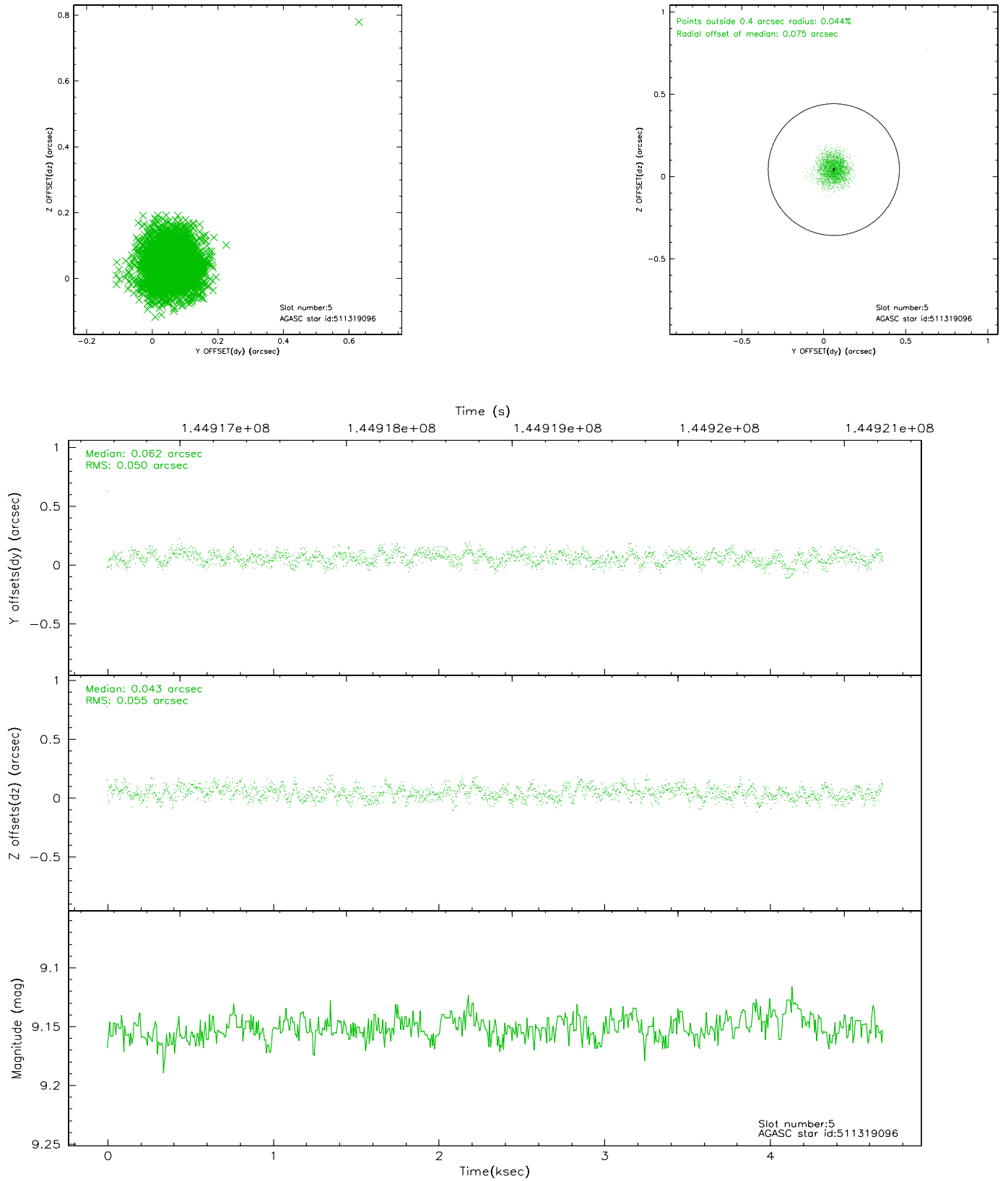
2.4.1 Slot 3



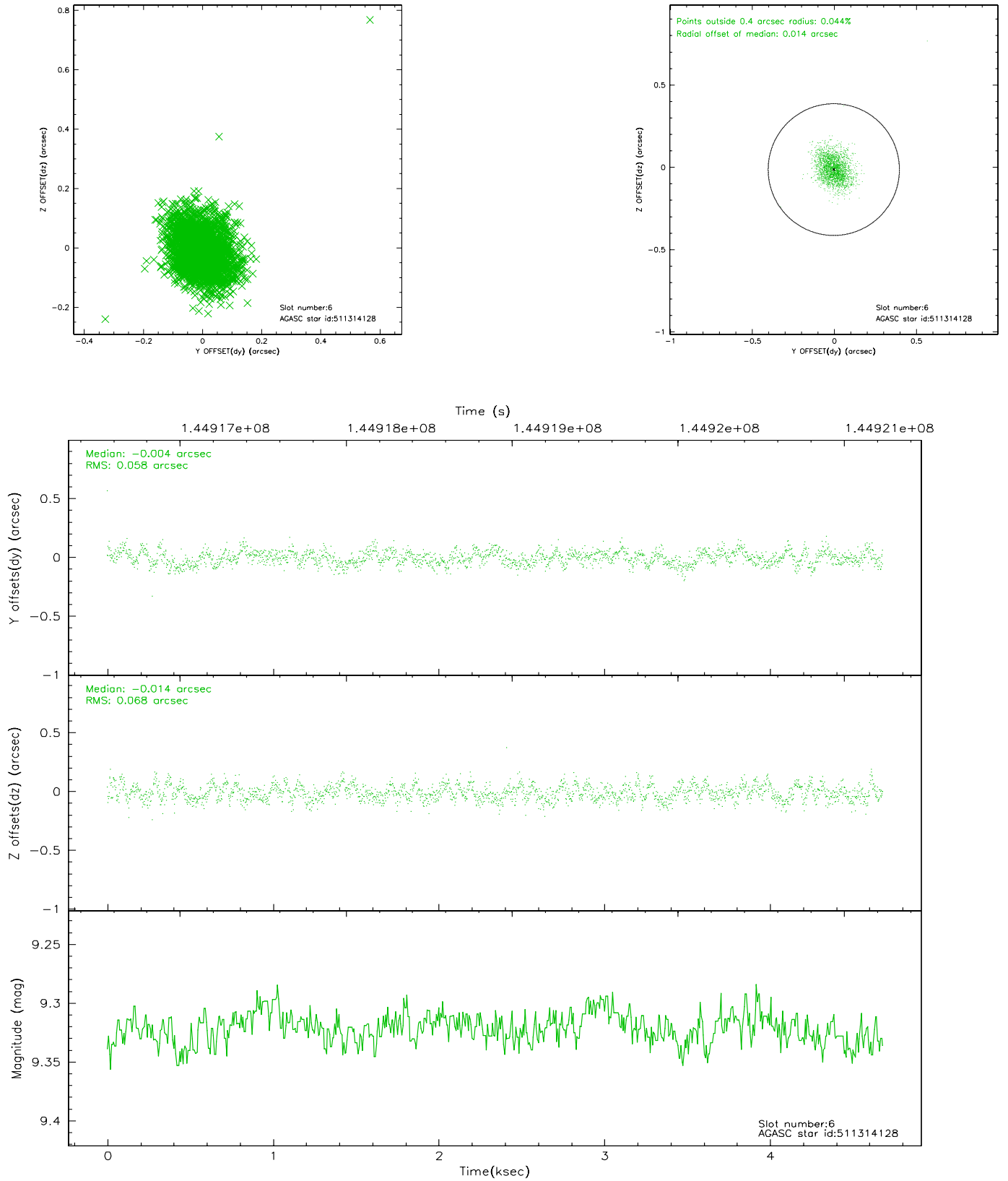
2.4.2 Slot 4



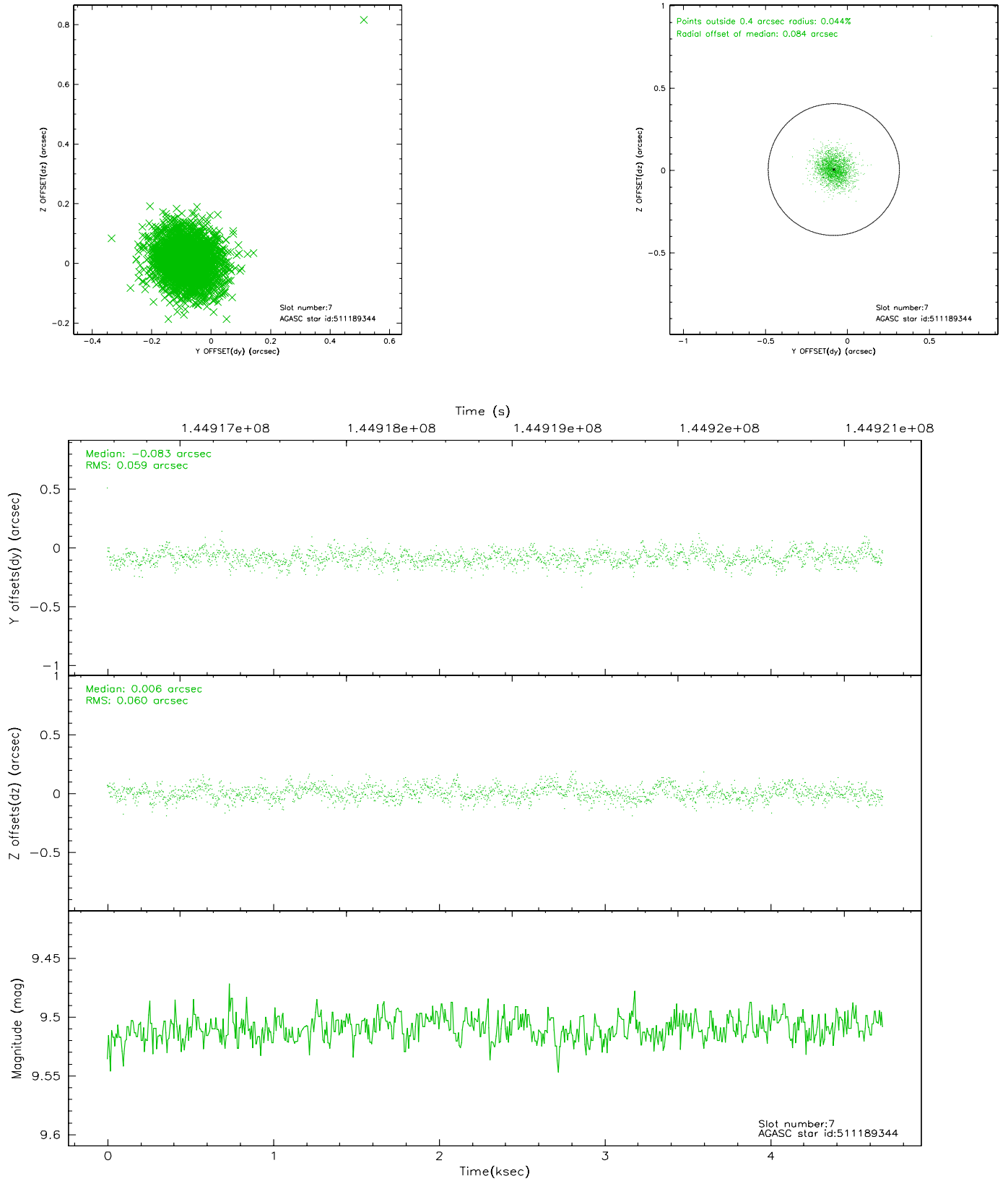
2.4.3 Slot 5



2.4.4 Slot 6

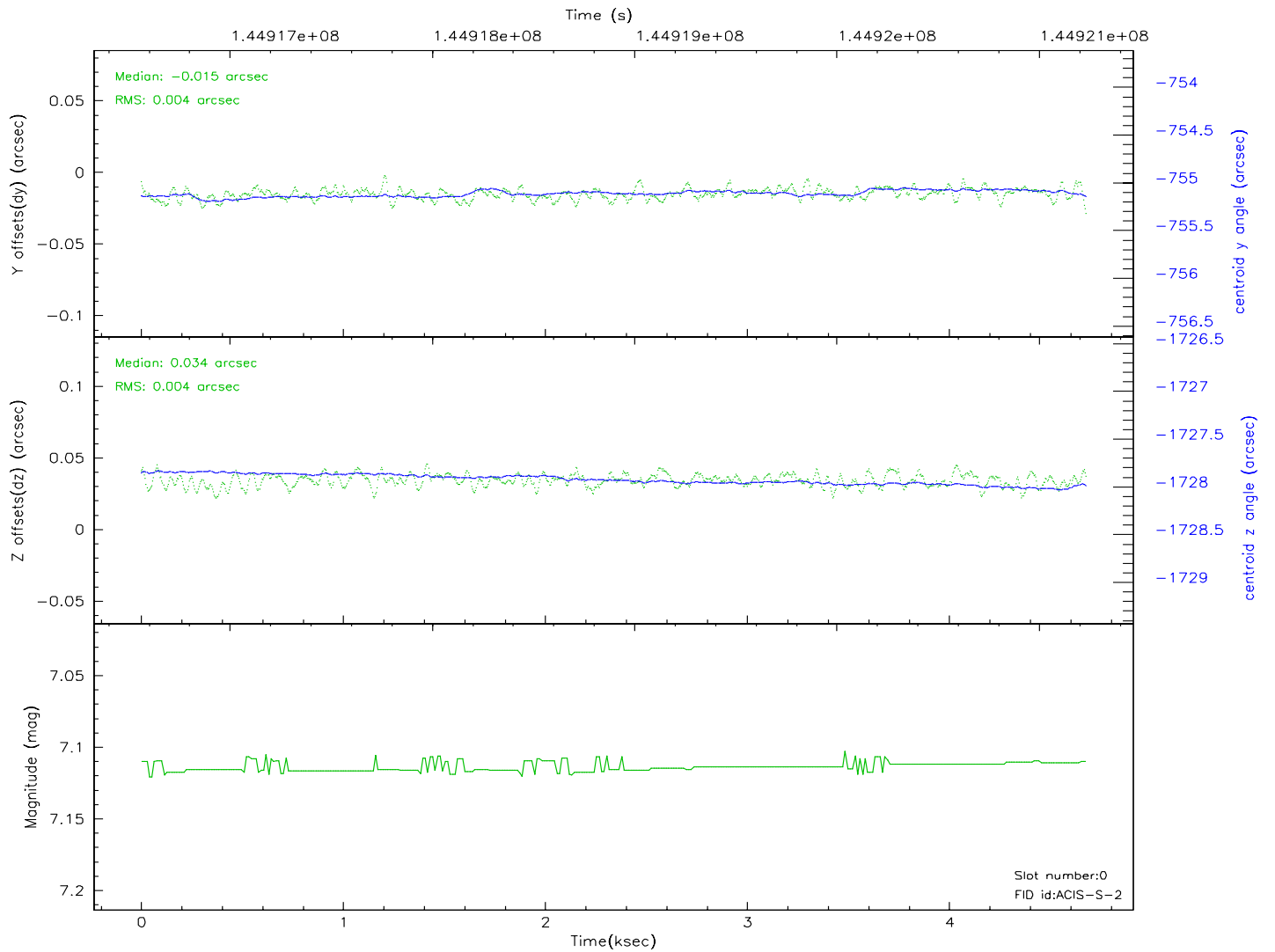
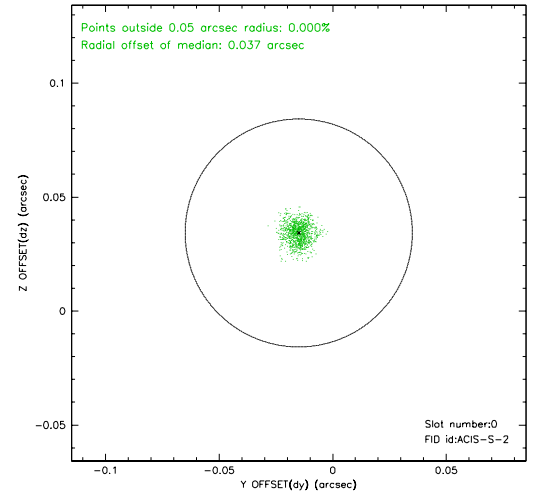
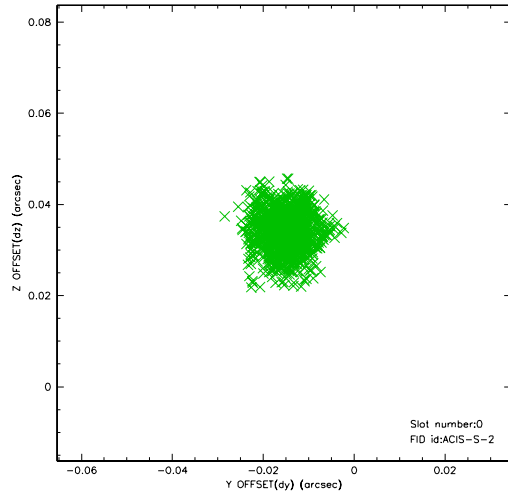


2.4.5 Slot 7

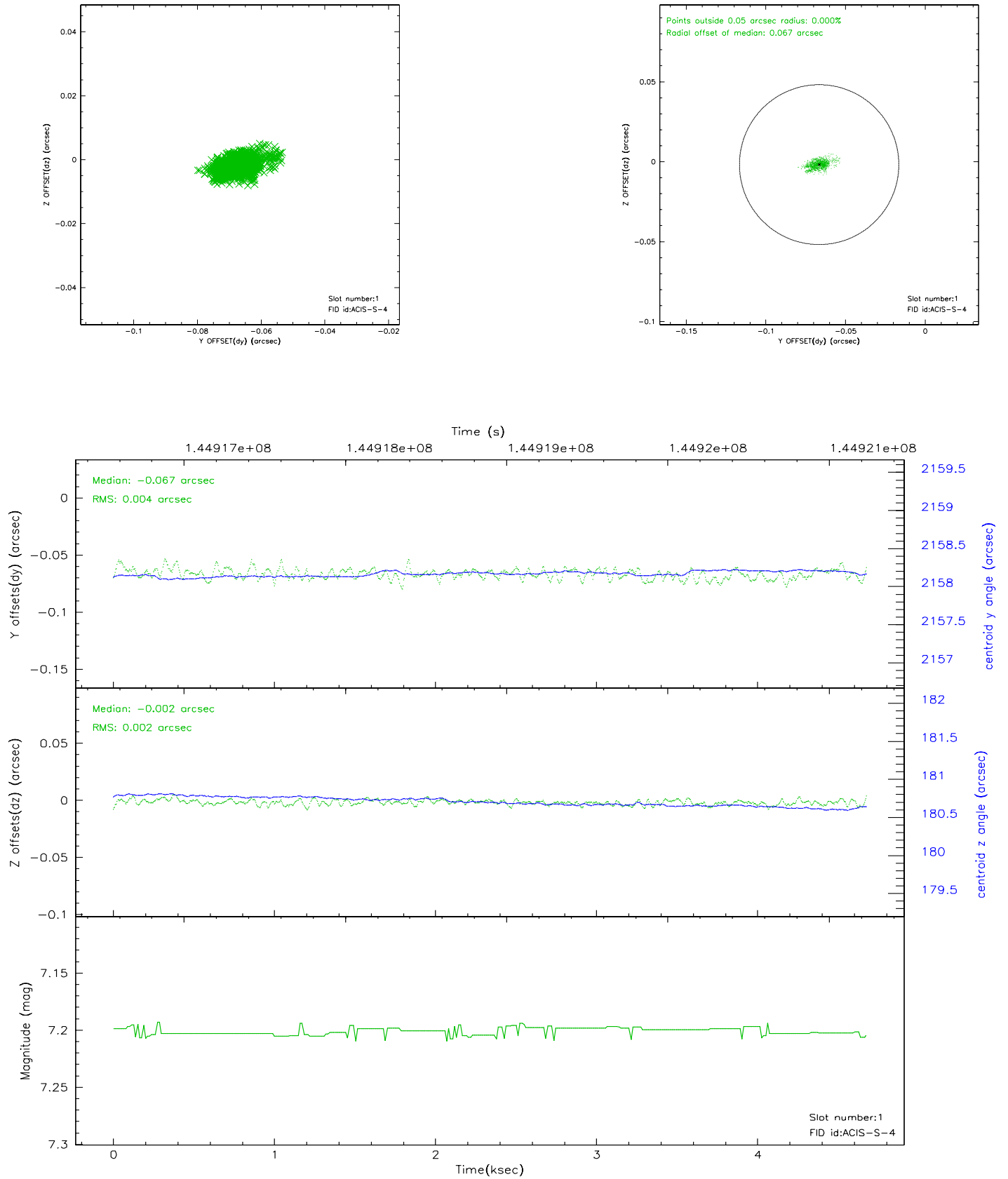


2.5 FID Slots

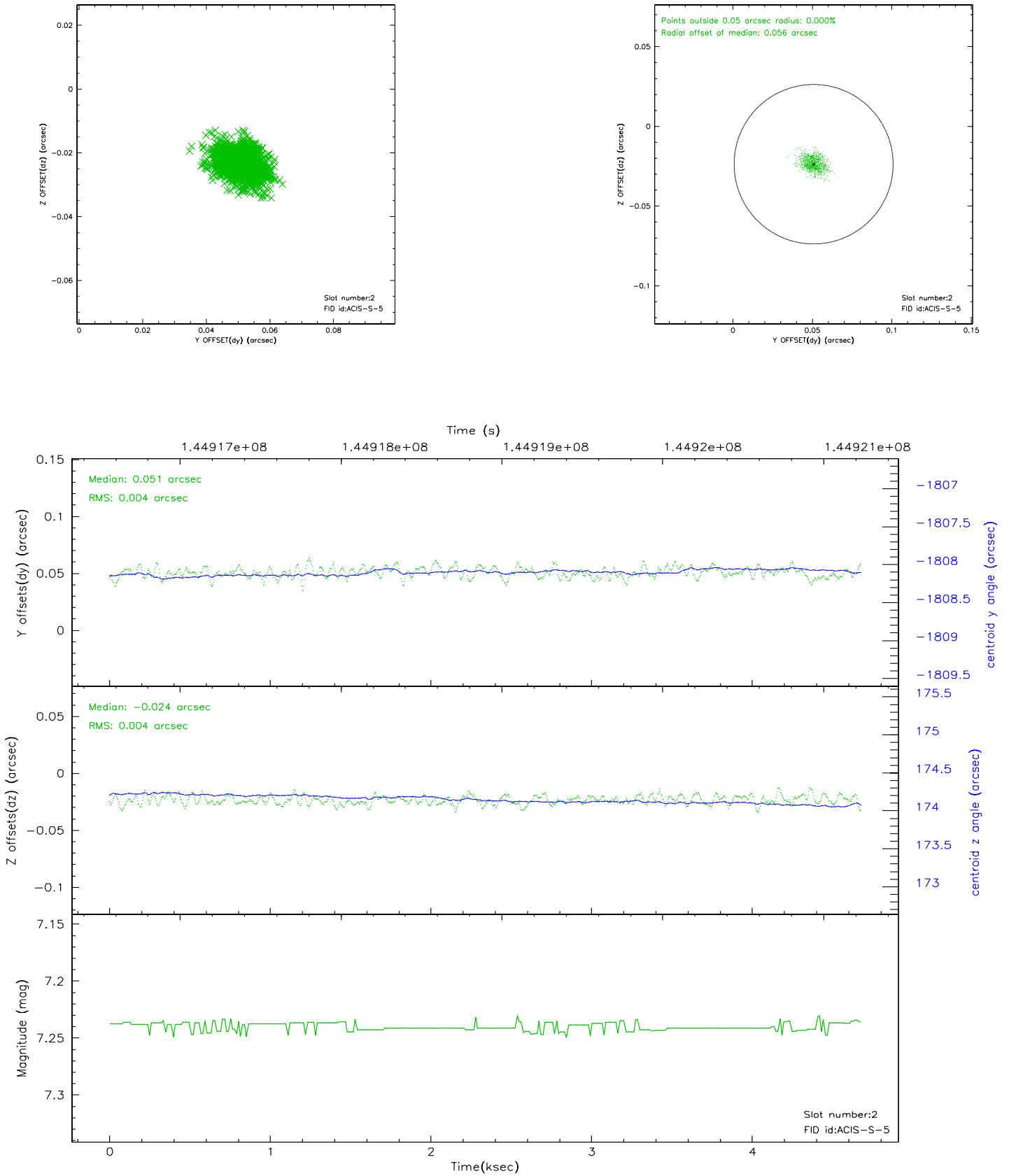
2.5.1 Slot 0



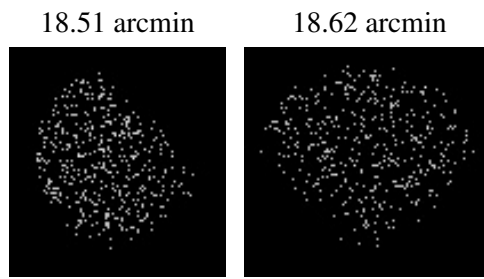
2.5.2 Slot 1



2.5.3 Slot 2



3 Point Sources



A Summary

A.1 Status

V&V Scientist	Jen Lauer
V&V Date (YYYY-MM-DD)	2006.10.02
V&V Edition	1
V&V Disposition and Status	OK
V&V Charge Time	4.675

A.2 Comments