

V&V Reference Report

L2 ASCDS Version : 8.4.5

Observation 3025 - L2 Version 3
Chandra X-Ray Center

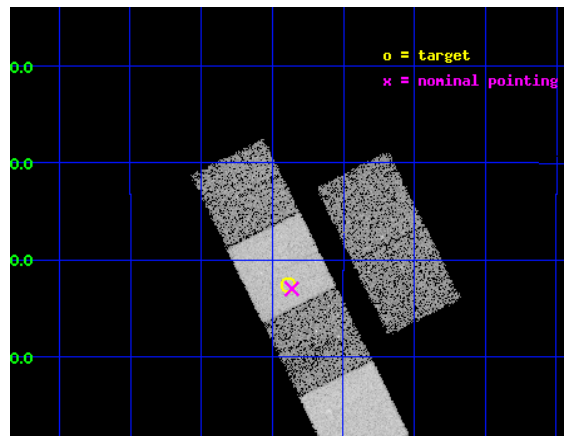
L2 Processing Date : Oct 11 2012

Contents

1	Front	2
2	OBI	3
2.1	OBI	3
2.1.1	Images	3
2.1.2	Bias	3
2.1.3	Parameters	4
2.1.4	Events	4
2.2	Compared Parameters	5
2.3	Aspect	6
2.4	Star Slots	9
2.4.1	Slot 3	9
2.4.2	Slot 4	10
2.4.3	Slot 5	11
2.4.4	Slot 6	12
2.4.5	Slot 7	13
2.5	FID Slots	14
2.5.1	Slot 0	14
2.5.2	Slot 1	15
2.5.3	Slot 2	16
A	Summary	17
A.1	Status	17
A.2	Comments	17

1 Front

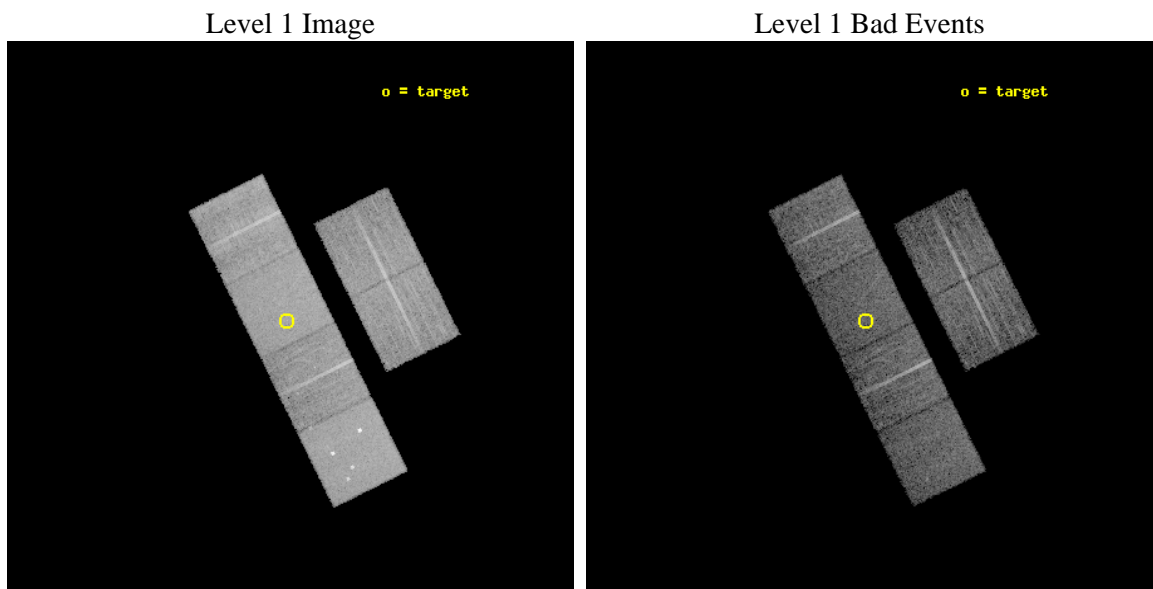
seq_num	700464	Sequence number
obs_id	3025	Observation id
title	A SYSTEMATIC X-RAY SURVEY OF SUBMILLIMETRE-LUMINOUS QUASARS	Propos
observer	Dr Robert Priddey	Principal investigator
object	BR1202-0725	Source name
dtcycle	0	
cycle	P	events from which exps? Prim/Second/Both
ra_targ	181.346333	Observer's specified target RA [deg]
dec_targ	-7.708972	Observer's specified target Dec [deg]
ra_nom	181.34052352616	Nominal RA [deg]
dec_nom	-7.7167708531712	Nominal Dec [deg]
roll_nom	243.62264875581	Nominal Roll [deg]
revision	3	Processing version of data
ontime	9762.7697895467	Sum of GTIs [s]
livetime	9639.1477200373	Livetime [s]
ontime2	9762.81082955	Sum of GTIs [s]
ontime3	9762.6466695368	Sum of GTIs [s]
ontime5	9762.7287495434	Sum of GTIs [s]
ontime6	9762.6877095401	Sum of GTIs [s]
ontime7	9762.7697895467	Sum of GTIs [s]
ontime8	9762.6056295633	Sum of GTIs [s]
l2events	102934	Number of level 2 events



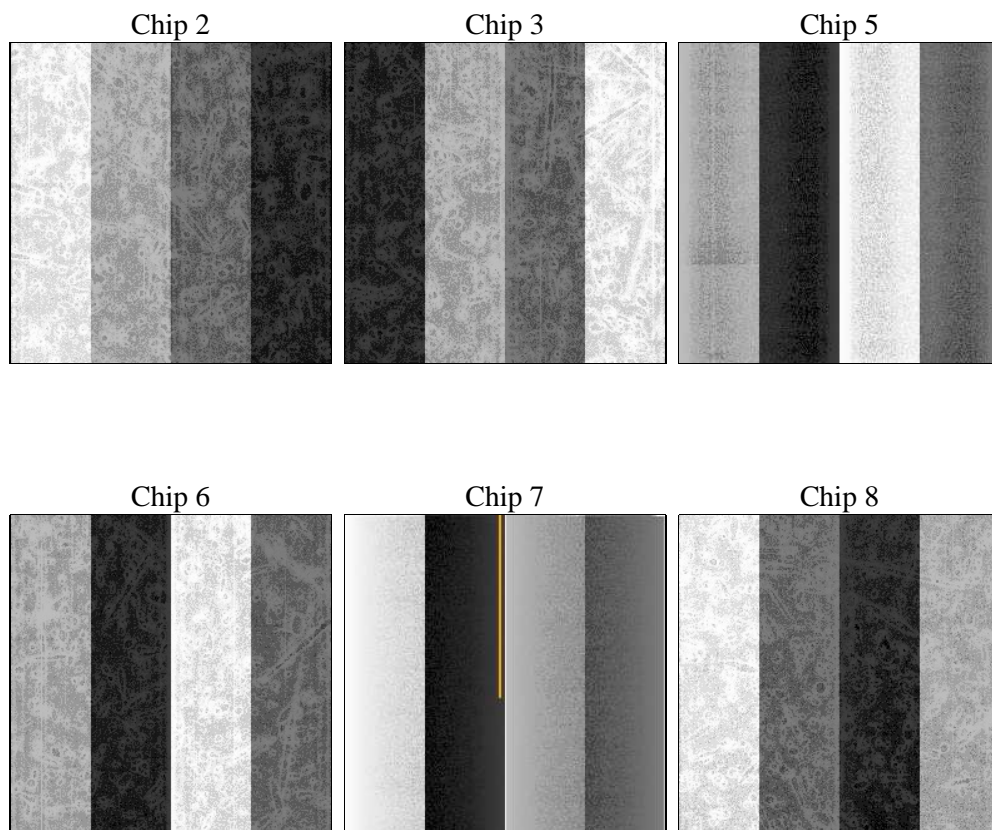
2 OBI

2.1 OBI

2.1.1 Images



2.1.2 Bias



2.1.3 Parameters

obi_num	2	Obi number	sched_exp_time	9800.000000	[s] Scheduled observation exposure time
ascdsver	8.4.5	Processing system revision	ontime	9762.7697895467	Sum of GTIs [s]
caldbver	4.5.2	 	ontime2	9762.81082955	Sum of GTIs [s]
date	2012-10-11T15:55:31	Date and time of file creation	ontime3	9762.6466695368	Sum of GTIs [s]
revision	3	Processing version of data	ontime5	9762.7287495434	Sum of GTIs [s]
			ontime6	9762.6877095401	Sum of GTIs [s]
			ontime7	9762.7697895467	Sum of GTIs [s]
			ontime8	9762.6056295633	Sum of GTIs [s]
			l1events	447847	Number of level 1 events

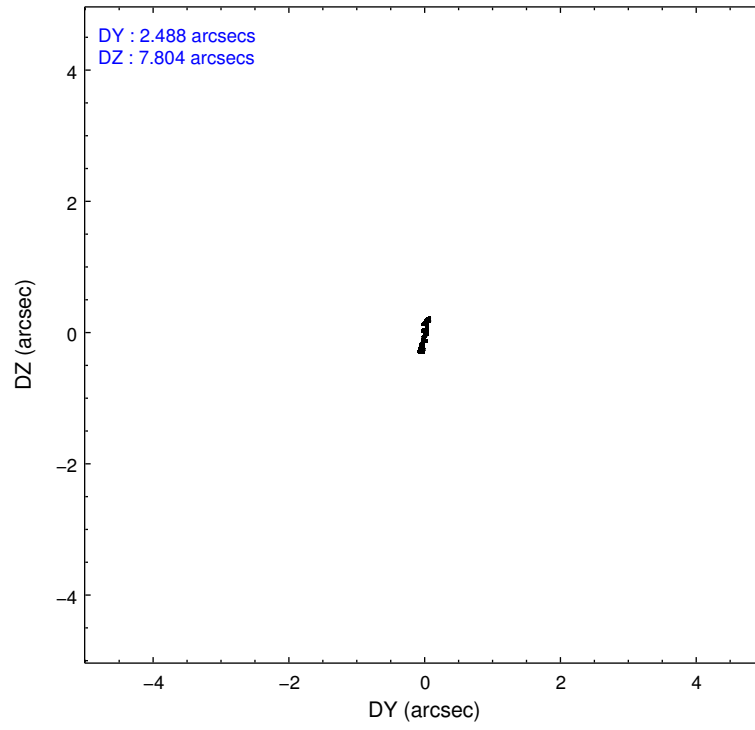
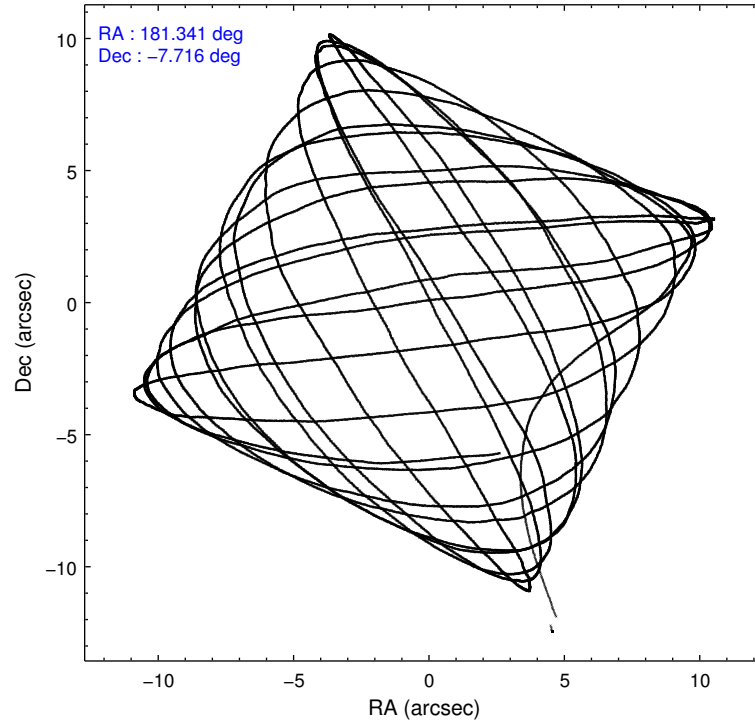
2.1.4 Events

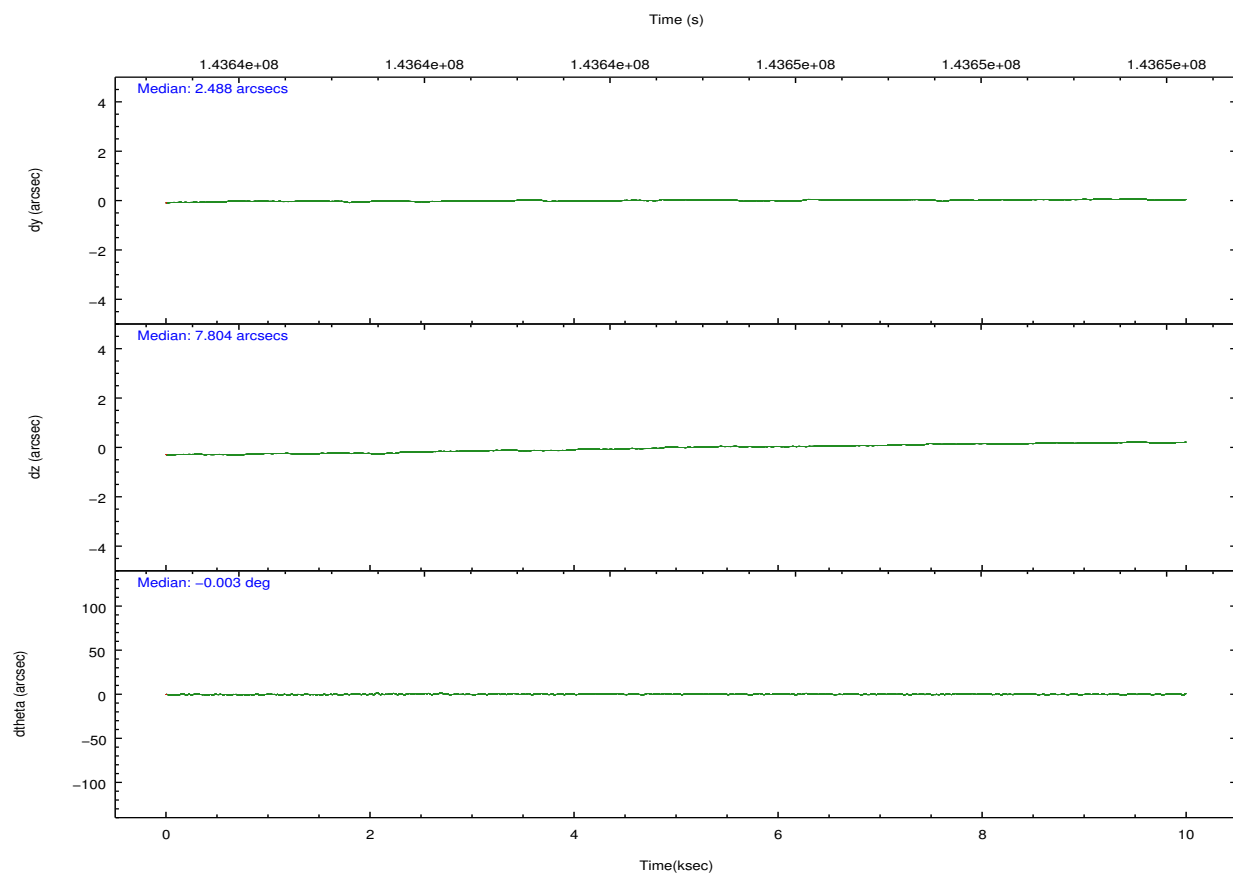
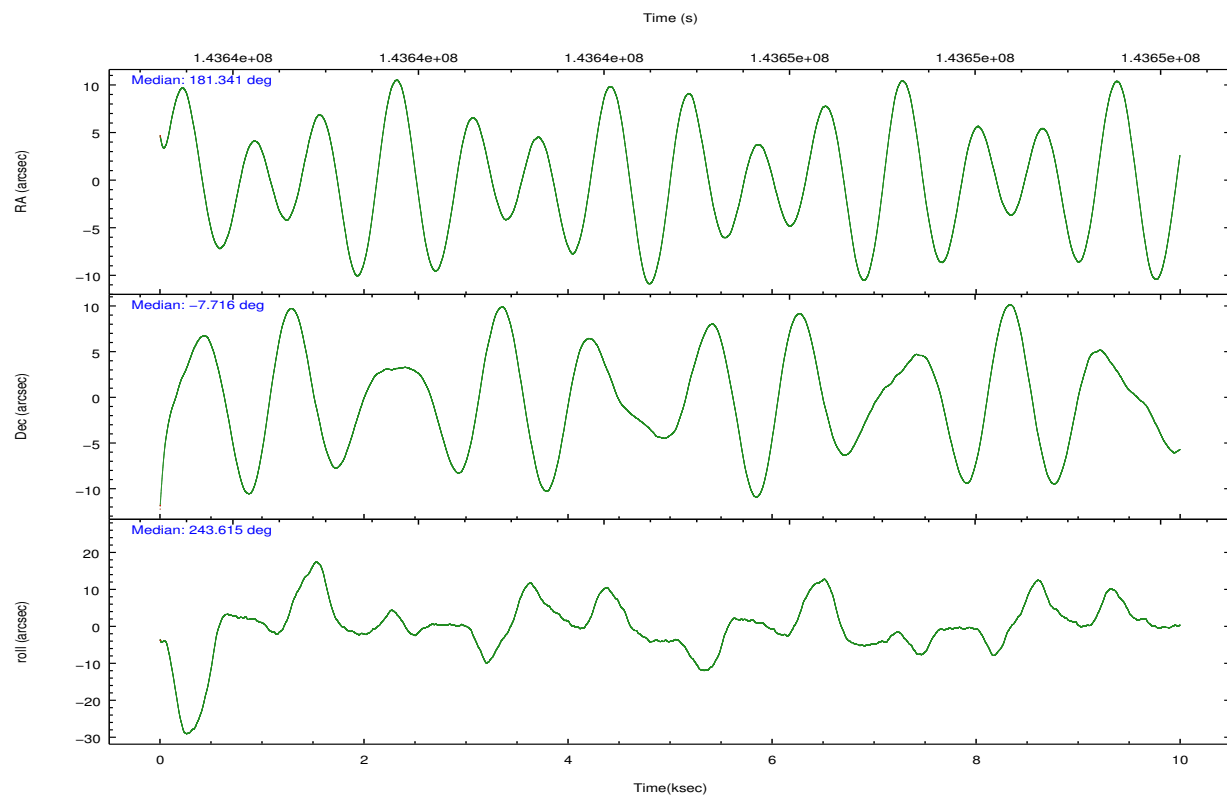
	ccd 2	ccd 3	ccd 5	ccd 6	ccd 7	ccd 8		ccd 2	ccd 3	ccd 5	ccd 6	ccd 7	ccd 8
level 1 events	64924	61343	93759	63057	81740	83024	grade 0 events	3735	3312	8461	3573	3508	7233
rejected events	56637	53726	47230	54759	46538	61587		5%	5%	9%	5%	4%	8%
rejected %	87%	87%	50%	86%	56%	74%	grade 1 events	38	31	125	39	88	43
								0%	0%	0%	0%	0%	0%
							grade 2 events	1793	1558	12827	1658	6899	4098
								2%	2%	13%	2%	8%	4%
							grade 3 events	674	659	1828	799	3178	2698
								1%	1%	1%	1%	3%	3%
							grade 4 events	690	720	1772	705	3150	2573
								1%	1%	1%	1%	3%	3%
							grade 5 events	2196	2515	6664	2748	7682	3417
								3%	4%	7%	4%	9%	4%
							grade 6 events	1401	1373	21667	1570	18486	4857
								2%	2%	23%	2%	22%	5%
							grade 7 events	54397	51175	40415	51965	38749	58105
								83%	83%	43%	82%	47%	69%

2.2 Compared Parameters

Parameter	Planned	Actual	Parameter	Planned	Actual
Instrument	ACIS	ACIS	Obspar format version number	7	7
Detector	ACIS-235678	ACIS-235678	Obspar file type	PREDICTED	ACTUAL
Grating	NONE	NONE	Obspar update status	NONE	UPDATED
Data mode	FAINT	FAINT	Number of optional ACIS chips dropped	0	0
Observation mode	POINTING	POINTING	On-chip summing requested	N	N
[deg] Pointing RA	181.338421	181.3405235261567	Subarray requested	NONE	NONE
[deg] Pointing Dec	-7.689595	-7.716770853171182	Alternating exposures requested	N	N
[deg] Pointing Roll	243.465734	243.6226487558143	[s] Primary exposure time	0.000000	3.2
[mm] SIM focus pos	-0.684267	-0.6828225247311905			
[mm] SIM defocus	0	0.001444936568705701			
[mm] SIM translation stage pos	-190.132523	-190.1425803651734			
[mm] SIM translation stage offset	0	0.01005778216563158			
[s] Observation start time (MET)	143639910.184000	143638944.48164			
Observation start date	2002-07-21T11:57:26	2002-07-21T11:42:24			
[s] Observation end time (MET)	143649710.184000	143650160.0321			
Observation end date	2002-07-21T14:40:46	2002-07-21T14:49:20			
Read mode	TIMED	TIMED			

2.3 Aspect



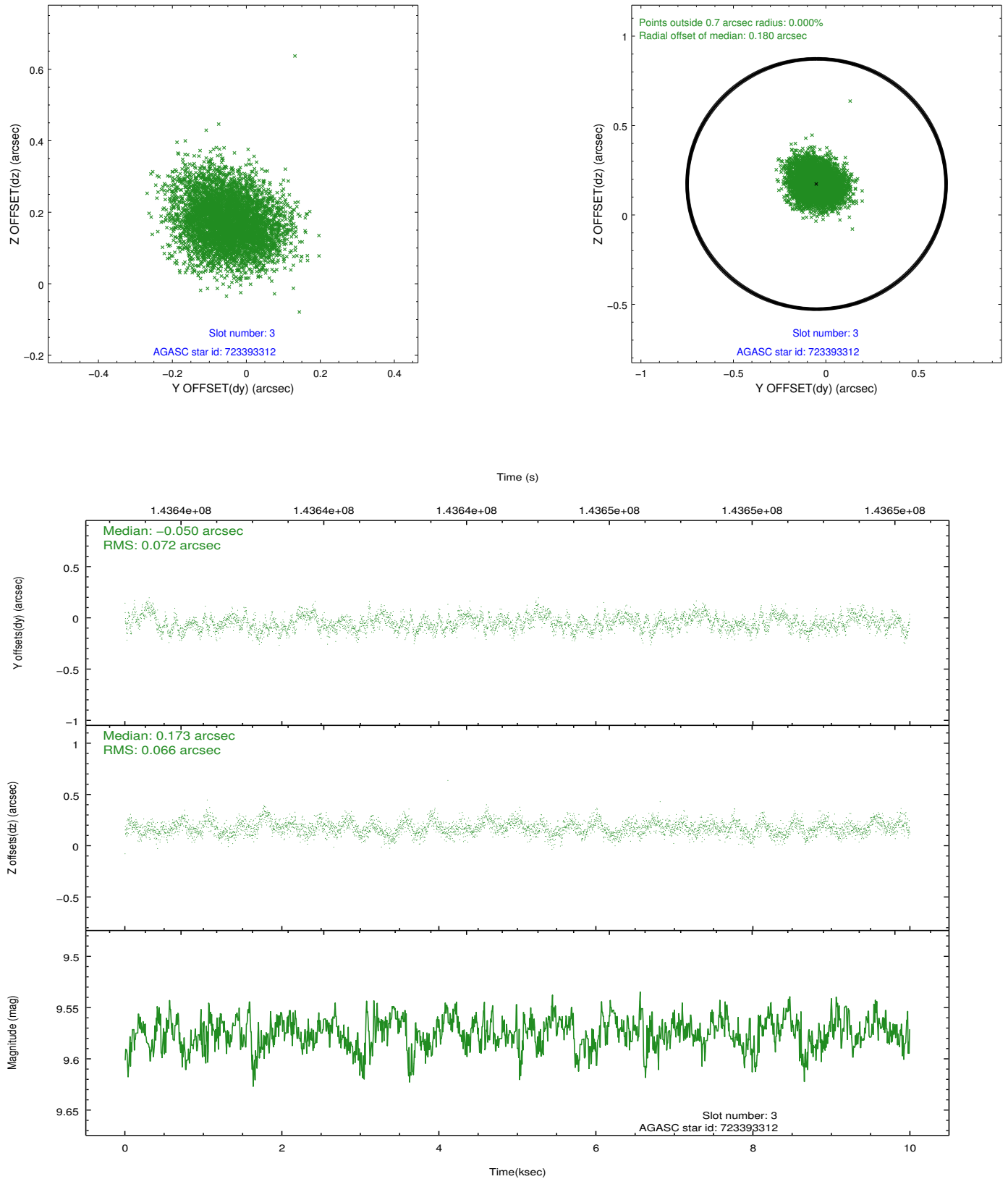


Slot Statistics

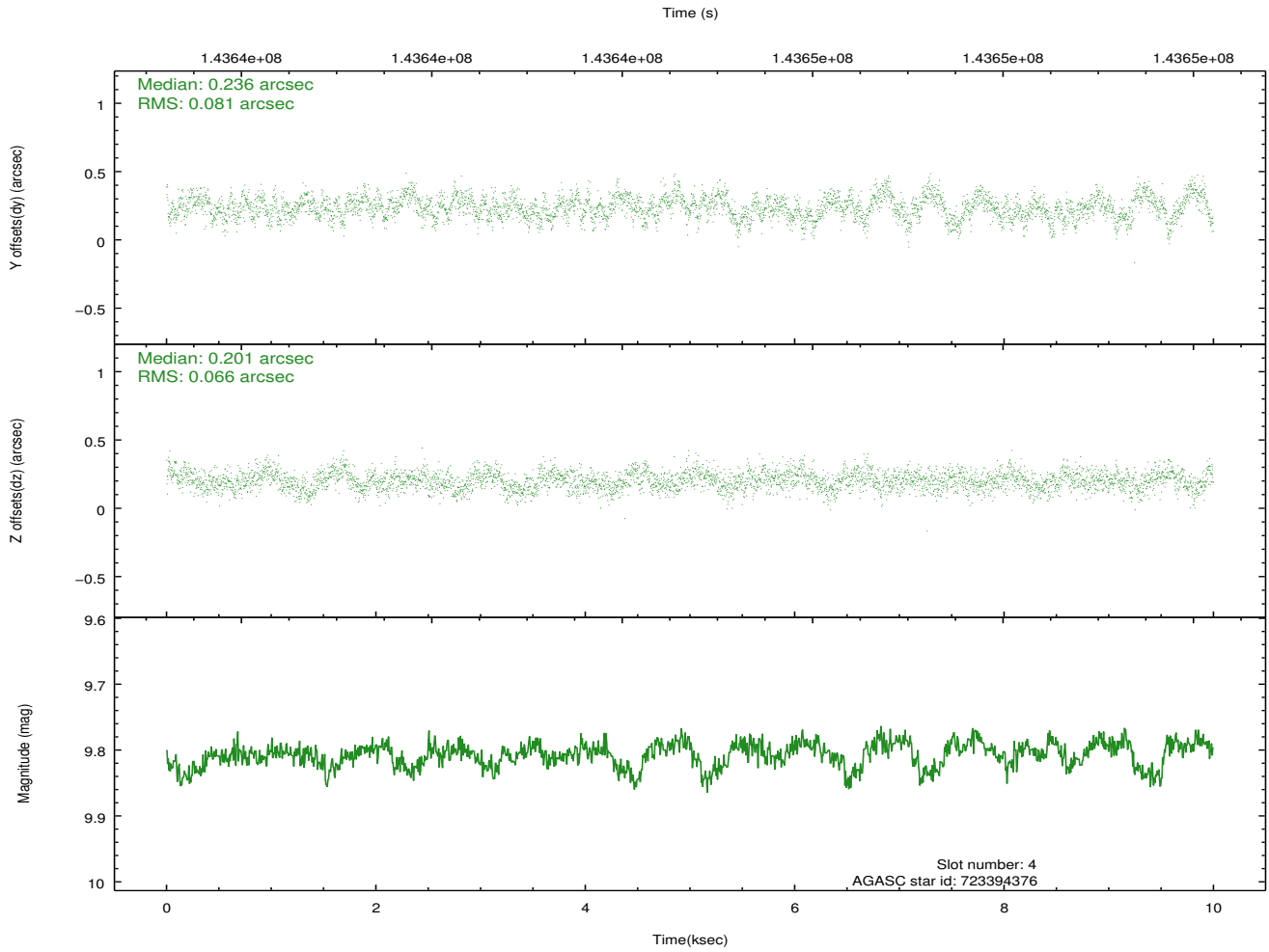
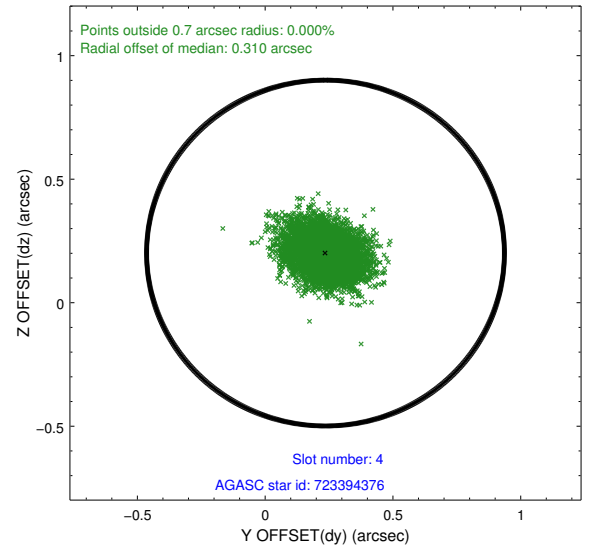
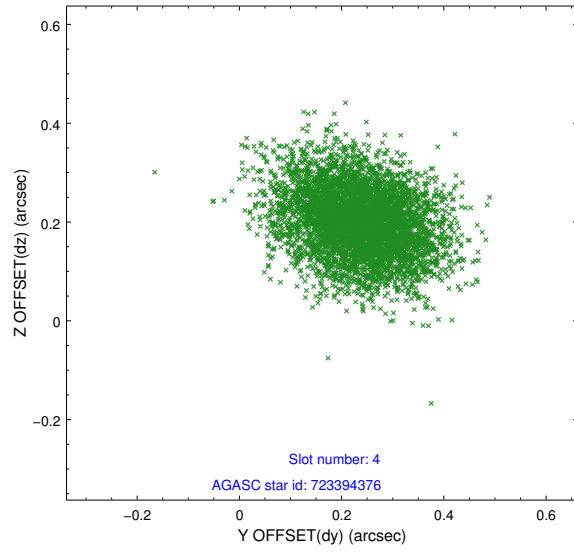
slot	status	id	mag	n_pts	med_dy	med_dz	dr1	dr2	ra	dec	mean_y	mean_z
0	FID	ACIS-S-2	7.11	2439	-0.007	0.005	0.007	0.012	0.000000	0.000000	-755.14	-1728.89
1	FID	ACIS-S-4	7.20	2439	-0.038	0.002	0.006	0.010	0.000000	0.000000	2157.88	179.01
2	FID	ACIS-S-5	7.24	2439	0.013	0.002	0.007	0.011	0.000000	0.000000	-1807.26	173.33
3	GUIDE	723393312	9.57	4866	-0.050	0.173	0.104	0.168	181.846894	-7.525205	-1338.52	1360.35
4	GUIDE	723394376	9.81	4873	0.236	0.201	0.111	0.179	181.467227	-8.140366	1247.54	1136.76
5	GUIDE	648154656	10.43	4873	-0.089	-0.237	0.152	0.243	181.068434	-6.950473	-1948.00	-2051.63
6	GUIDE	648159104	9.23	4870	-0.134	-0.072	0.107	0.172	180.971351	-6.928701	-1863.61	-2397.47
7	GUIDE	648158136	10.42	4714	0.041	-0.063	0.158	0.260	180.712636	-7.426767	153.75	-2420.65

2.4 Star Slots

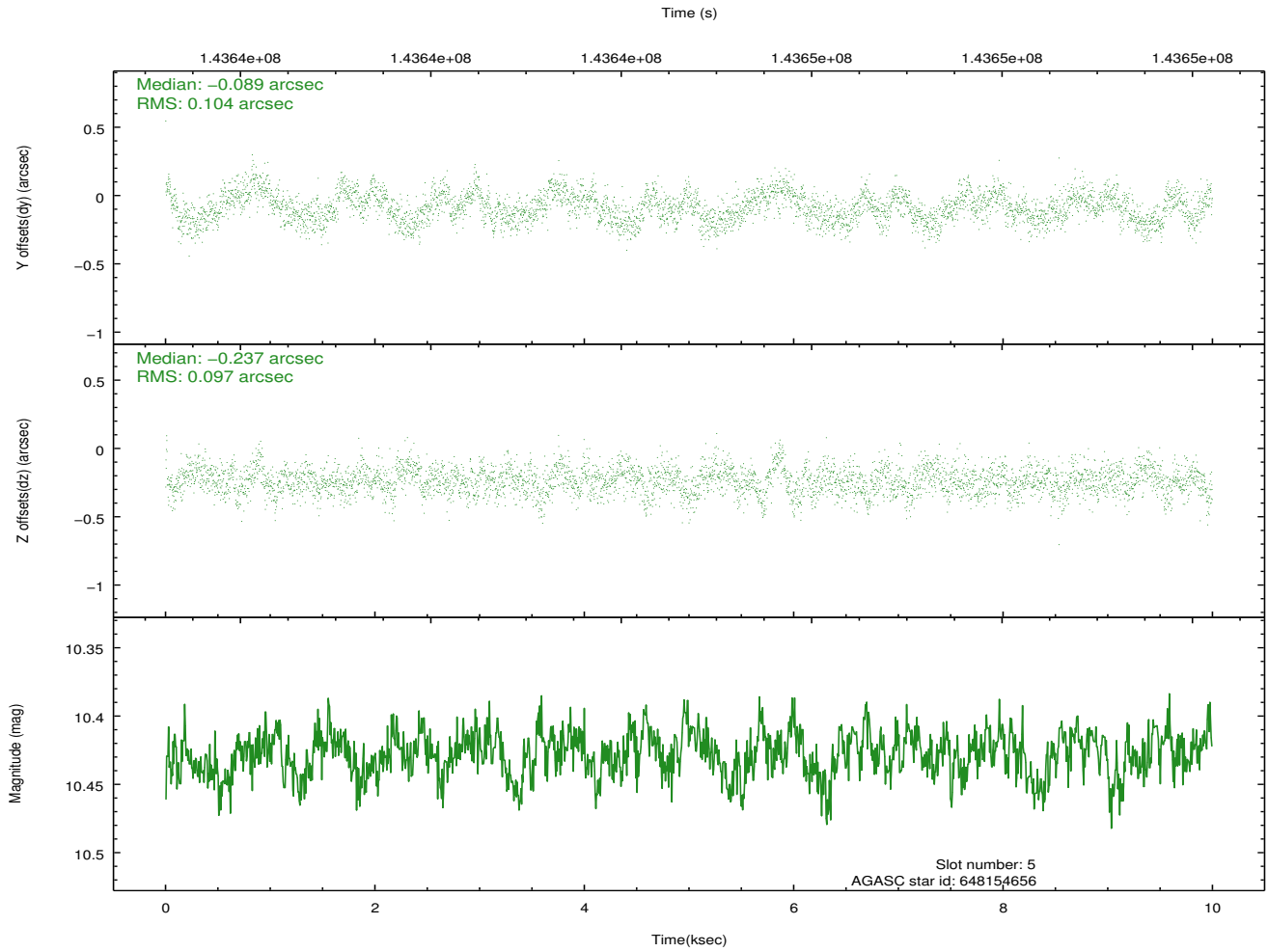
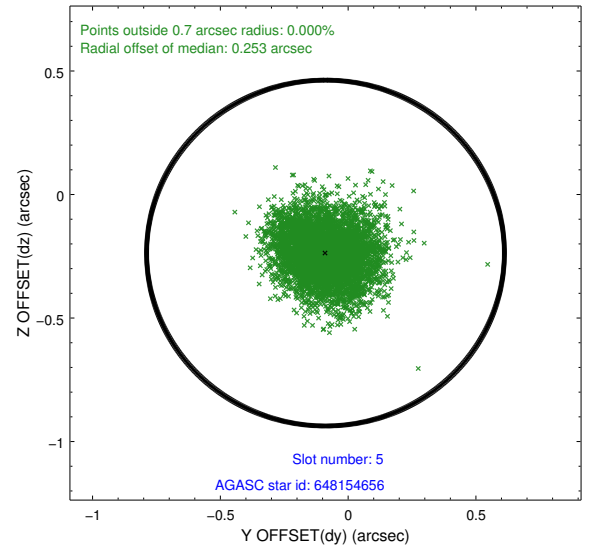
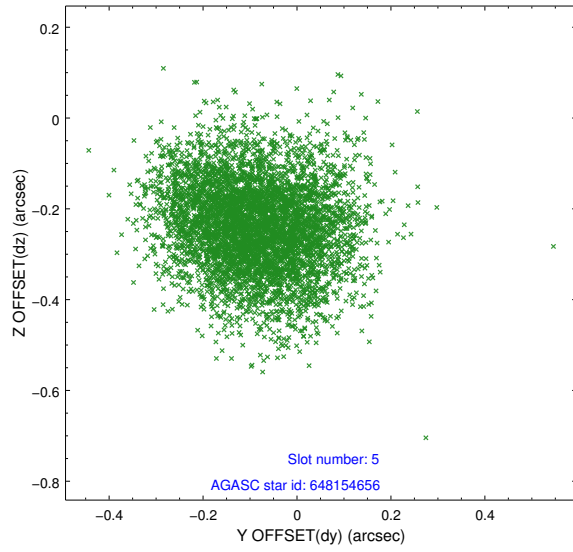
2.4.1 Slot 3



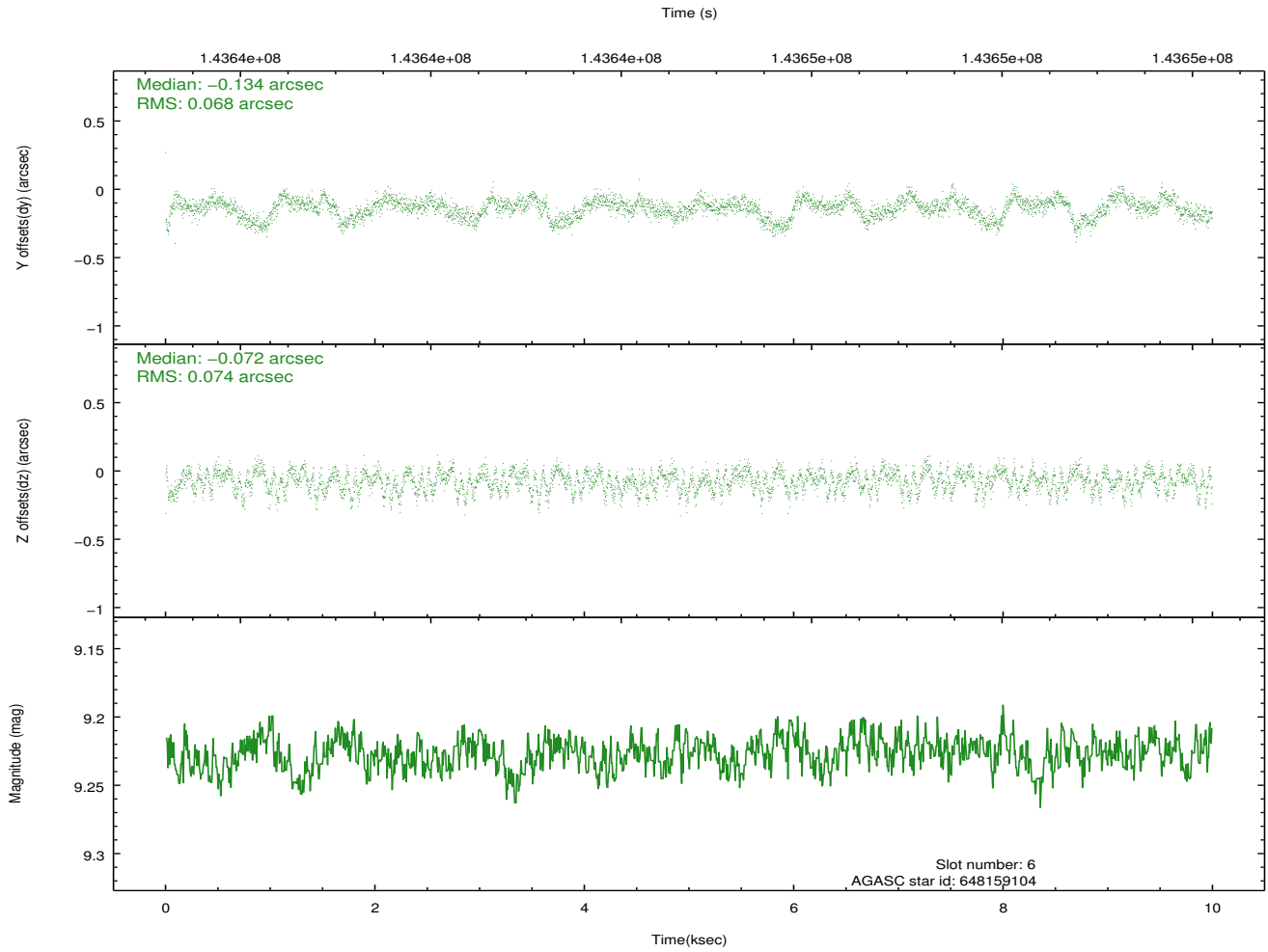
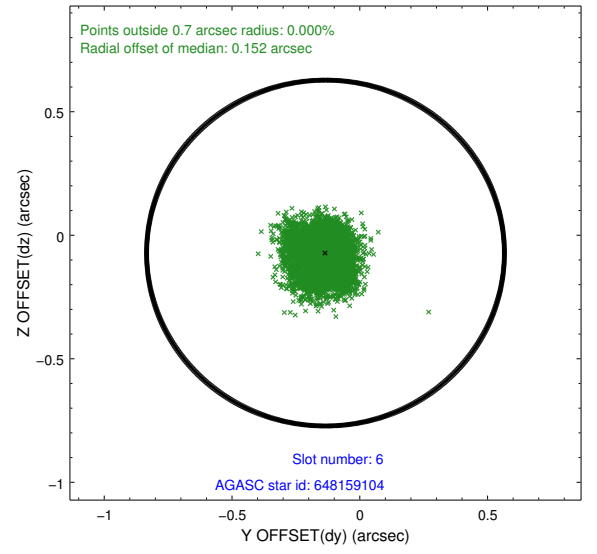
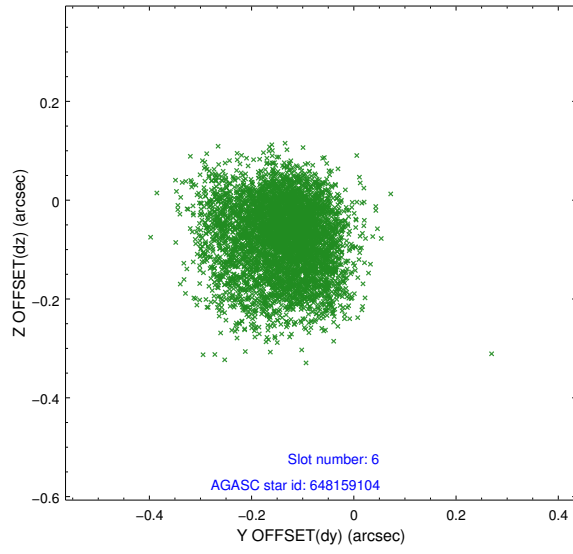
2.4.2 Slot 4



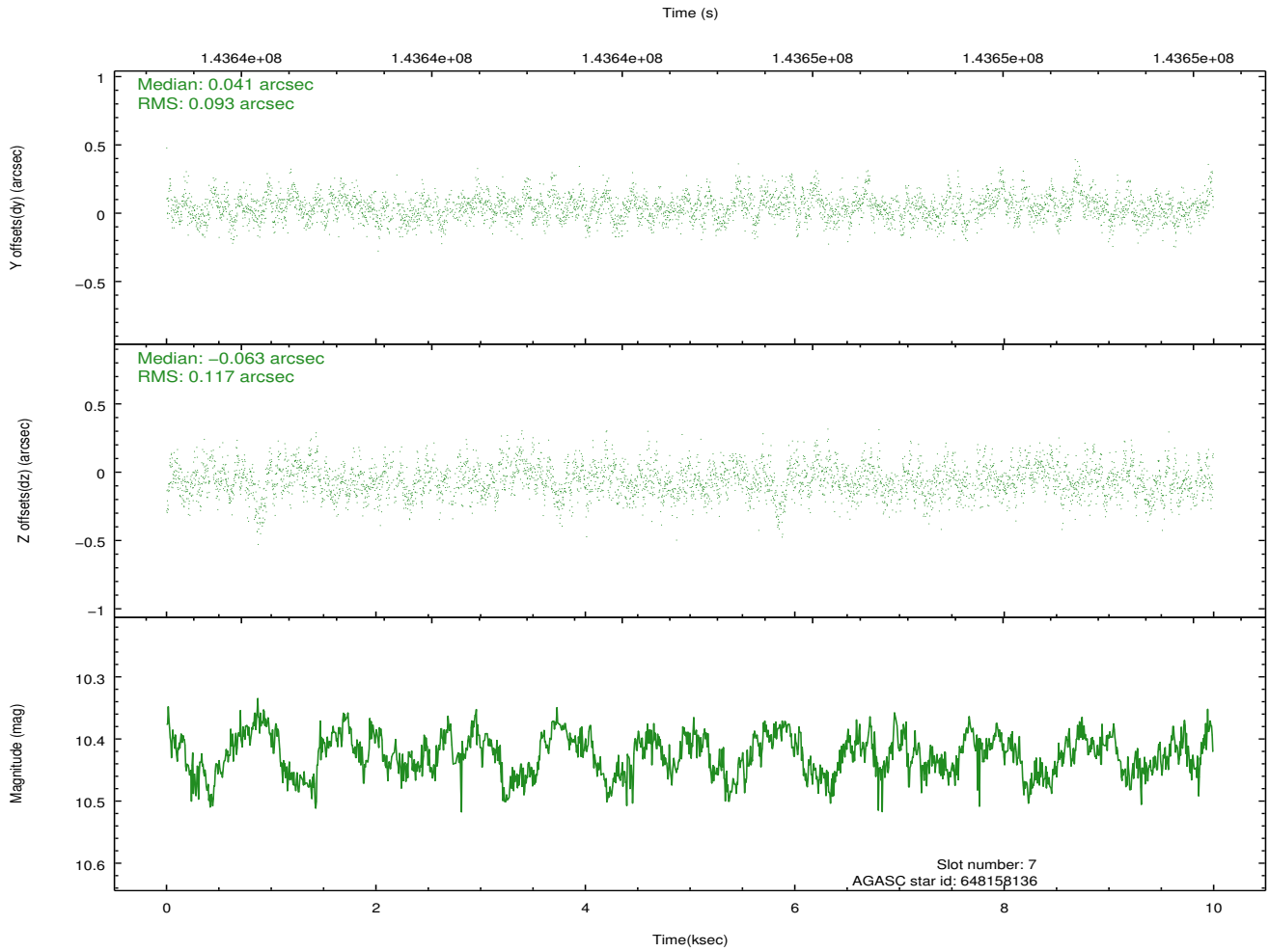
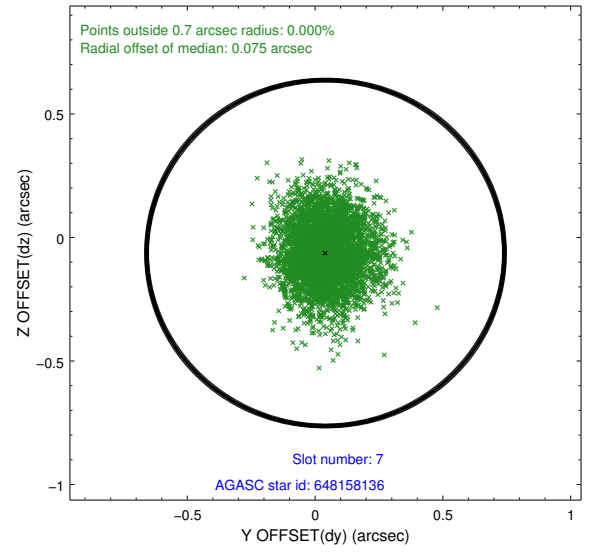
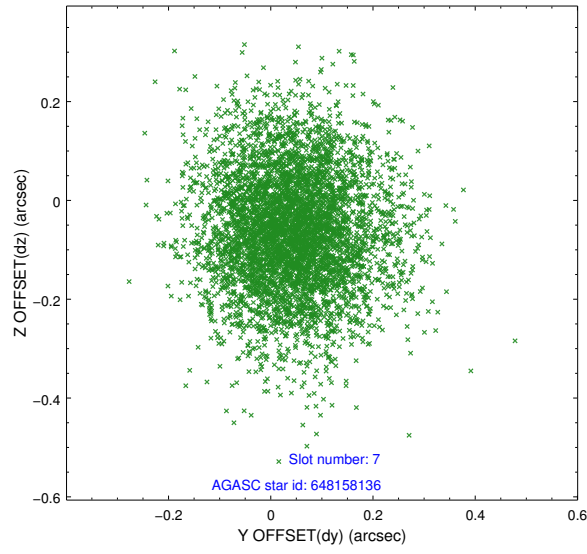
2.4.3 Slot 5



2.4.4 Slot 6

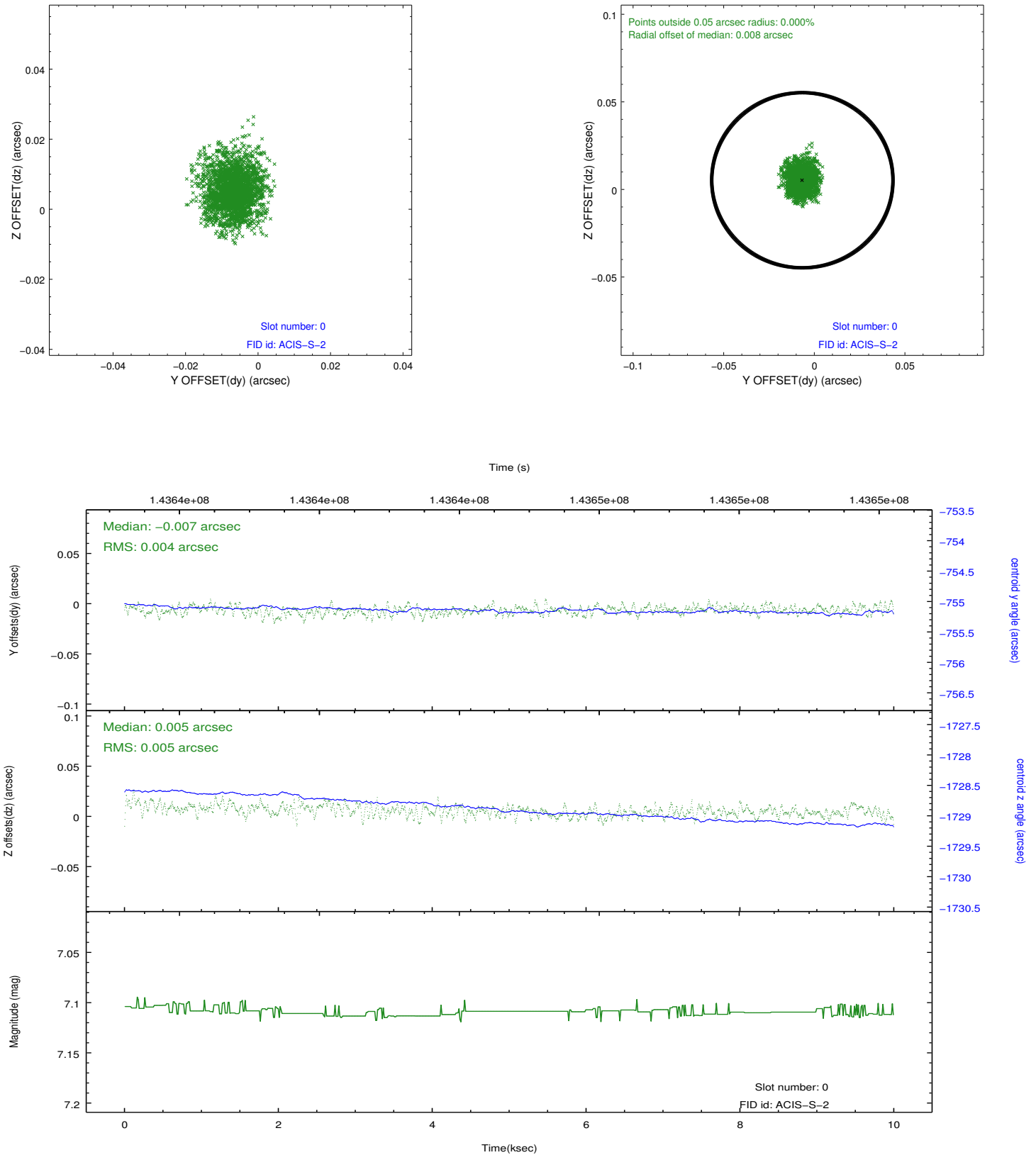


2.4.5 Slot 7

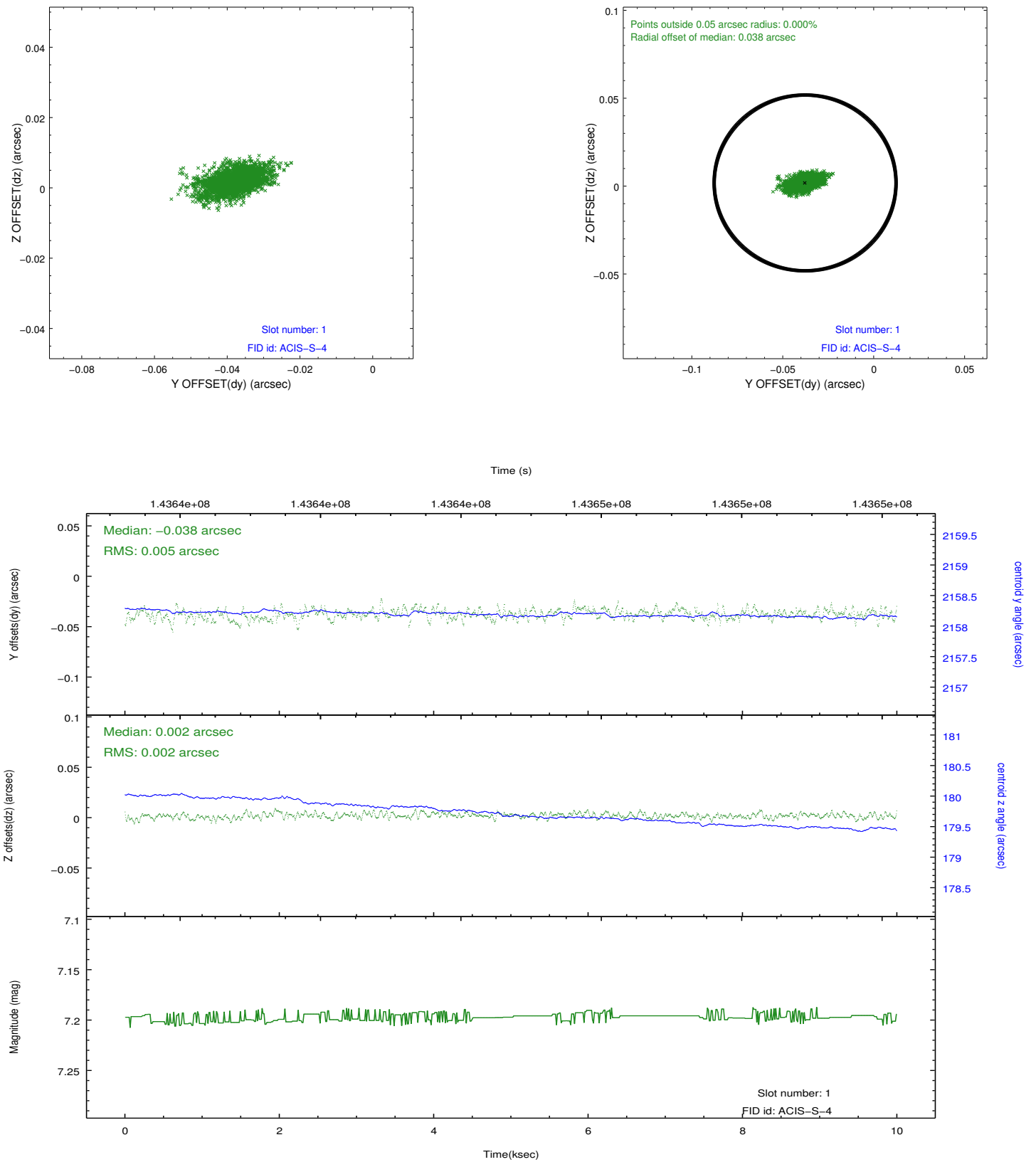


2.5 FID Slots

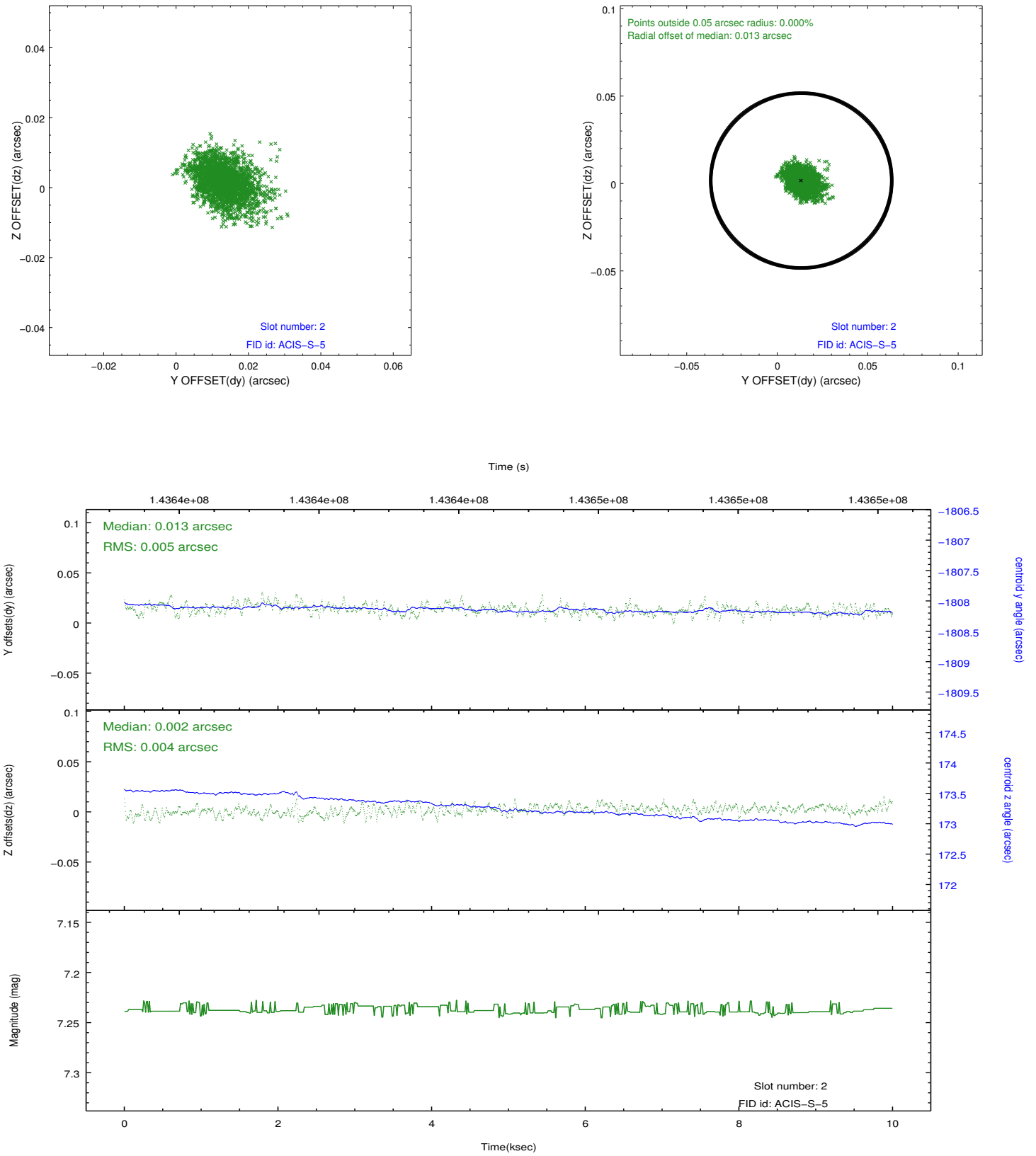
2.5.1 Slot 0



2.5.2 Slot 1



2.5.3 Slot 2



A Summary

A.1 Status

V&V Scientist	Beth Sundheim
V&V Date (YYYY-MM-DD)	2012.10.21
V&V Edition	1
V&V Disposition and Status	OK
V&V Charge Time	9.763

A.2 Comments