

V&V Reference Report

L2 ASCDS Version : 7.6.9

Observation 3025 - L2 Version 001
Chandra X-Ray Center

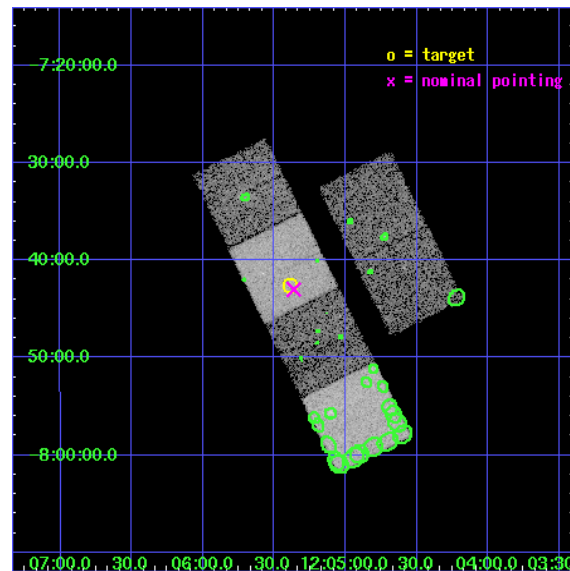
L2 Processing Date : Sep 26 2006

Contents

1	Front	2
2	OBI	3
2.1	OBI	3
2.1.1	Images	3
2.1.2	Bias	3
2.1.3	Parameters	4
2.1.4	Events	4
2.2	Compared Parameters	5
2.3	Aspect	6
2.4	Star Slots	9
2.4.1	Slot 3	9
2.4.2	Slot 4	10
2.4.3	Slot 5	11
2.4.4	Slot 6	12
2.4.5	Slot 7	13
2.5	FID Slots	14
2.5.1	Slot 0	14
2.5.2	Slot 1	15
2.5.3	Slot 2	16
3	Point Sources	17
A	Summary	18
A.1	Status	18
A.2	Comments	18

1 Front

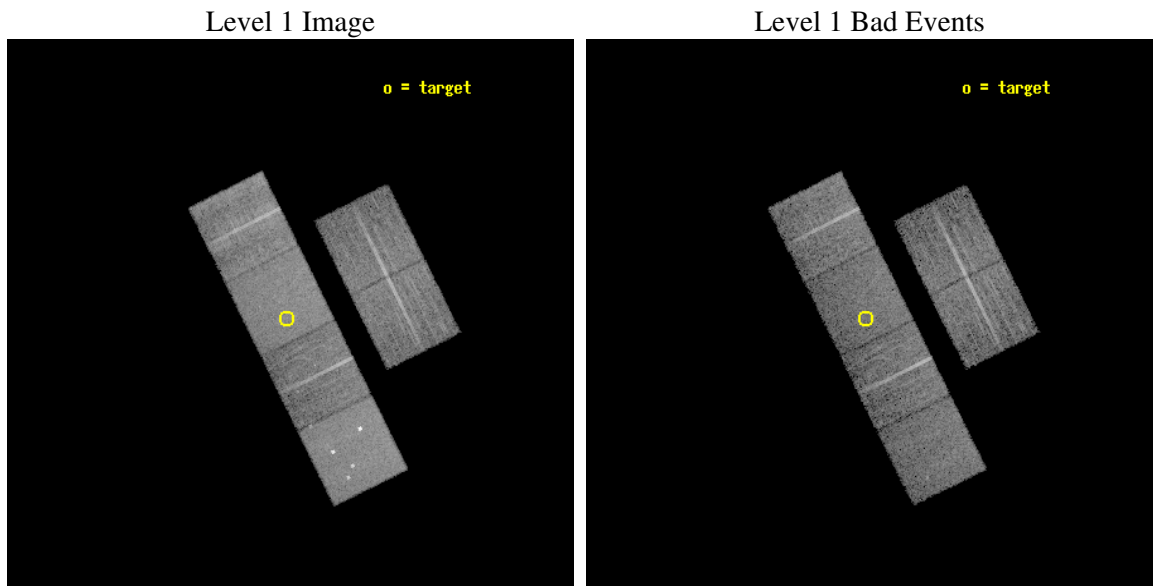
seq_num	700464
obs_id	3025
title	A SYSTEMATIC X-RAY SURVEY OF SUBMILLIMETRE-LUMINOUS QUASARS
observer	Dr Robert Priddey
object	BR1202-0725
dtcycle	0
cycle	P
ra_targ	181.346333
dec_targ	-7.708972
ra_nom	181.34052352616
dec_nom	-7.7167708531712
roll_nom	243.62264875581
revision	2
ontime	9763.1999636292
livetime	9639.5724469965
ontime2	9763.1999636292
ontime3	9763.1999636292
ontime5	9763.1999636292
ontime6	9763.1999636292
ontime7	9763.1999636292
ontime8	9763.1999636292
l2events	99387



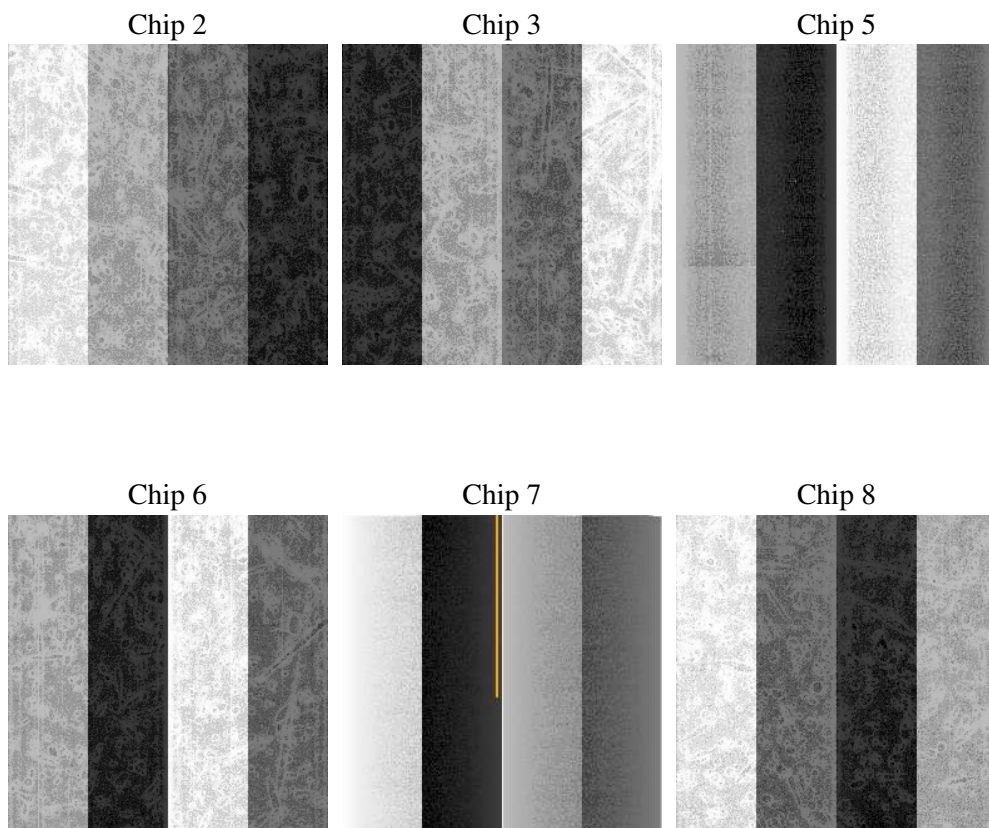
2 OBI

2.1 OBI

2.1.1 Images



2.1.2 Bias



2.1.3 Parameters

obi_num	2
ascdsver	7.6.9
caldbver	3.2.3
date	2006-09-26T08:36:17
revision	2

sched_exp_time	9800.000000
ontime	9768.3720216453
ontime2	9768.3720216453
ontime3	9768.3720216453
ontime5	9768.3720216453
ontime6	9768.3720216453
ontime7	9768.3720216453
ontime8	9768.3720216453
l1events	447847

2.1.4 Events

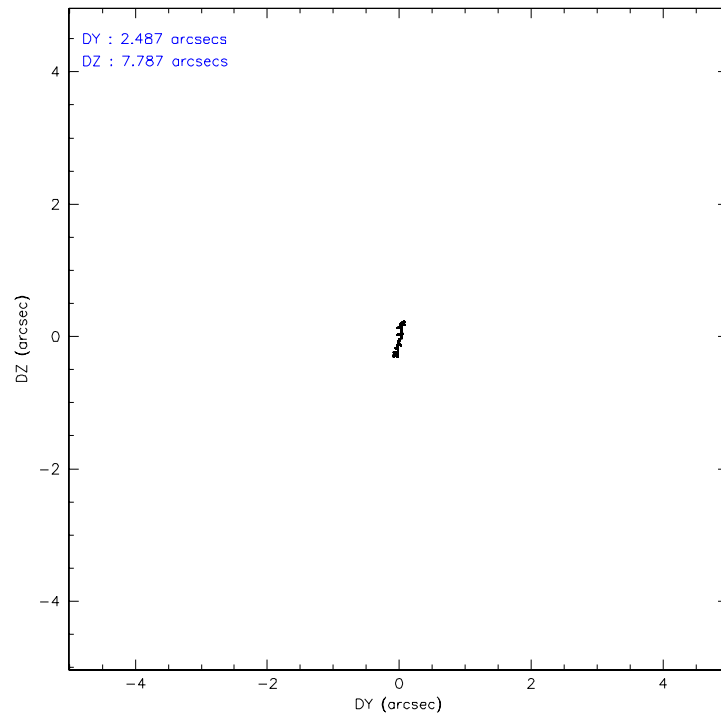
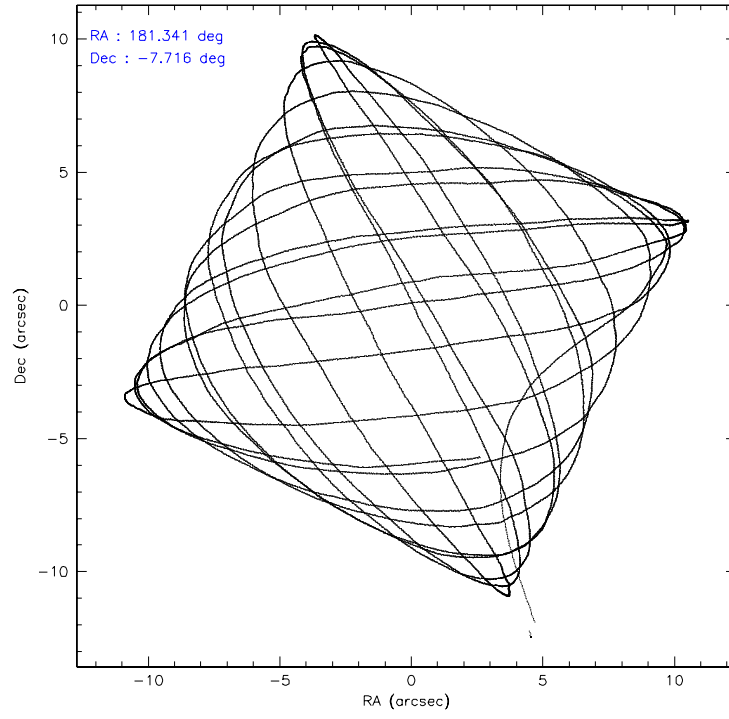
	ccd 2	ccd 3	ccd 5	ccd 6	ccd 7	ccd 8
level 1 events	64924	61343	93759	63057	81740	83024
rejected events	56633	53724	48629	54756	49357	61569
rejected %	87%	87%	51%	86%	60%	74%

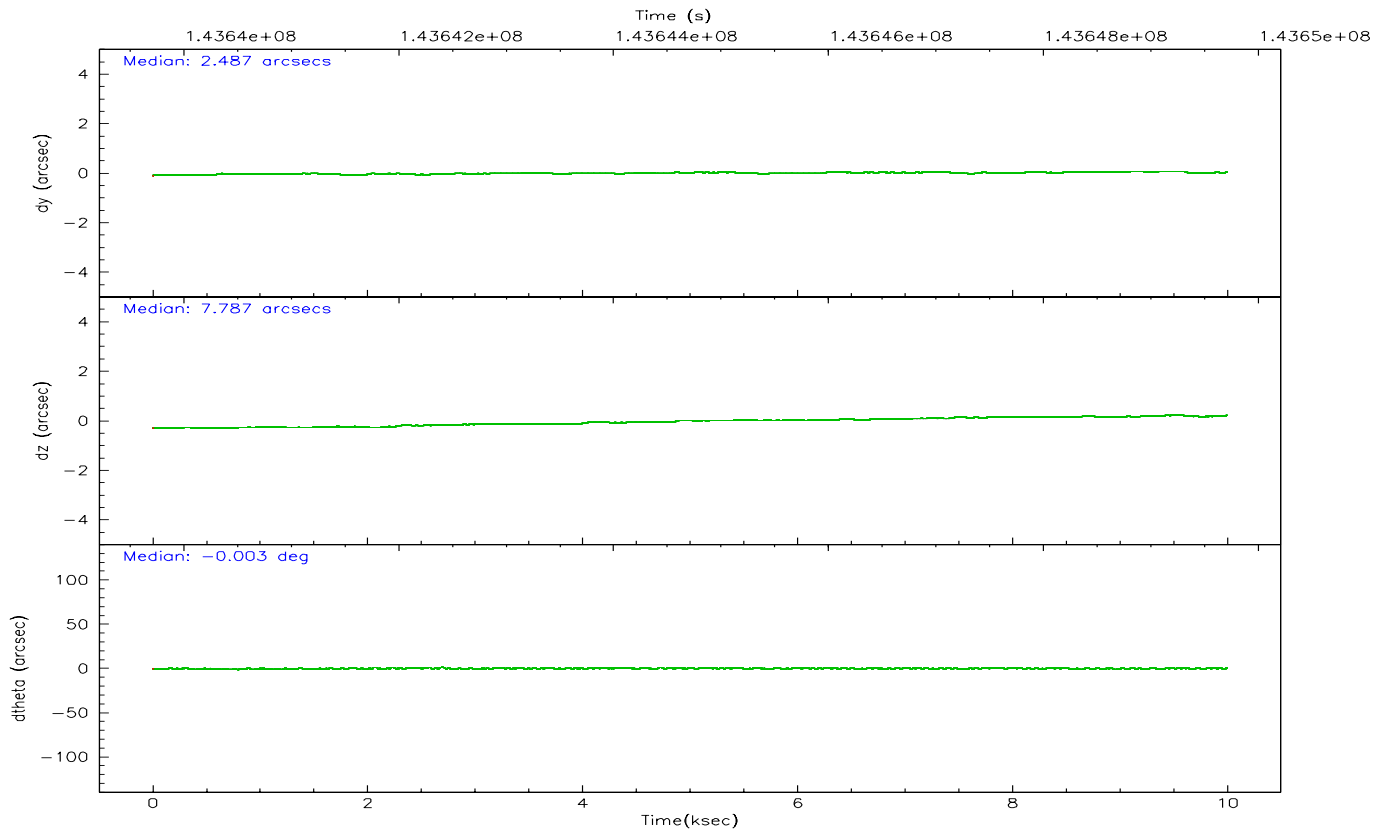
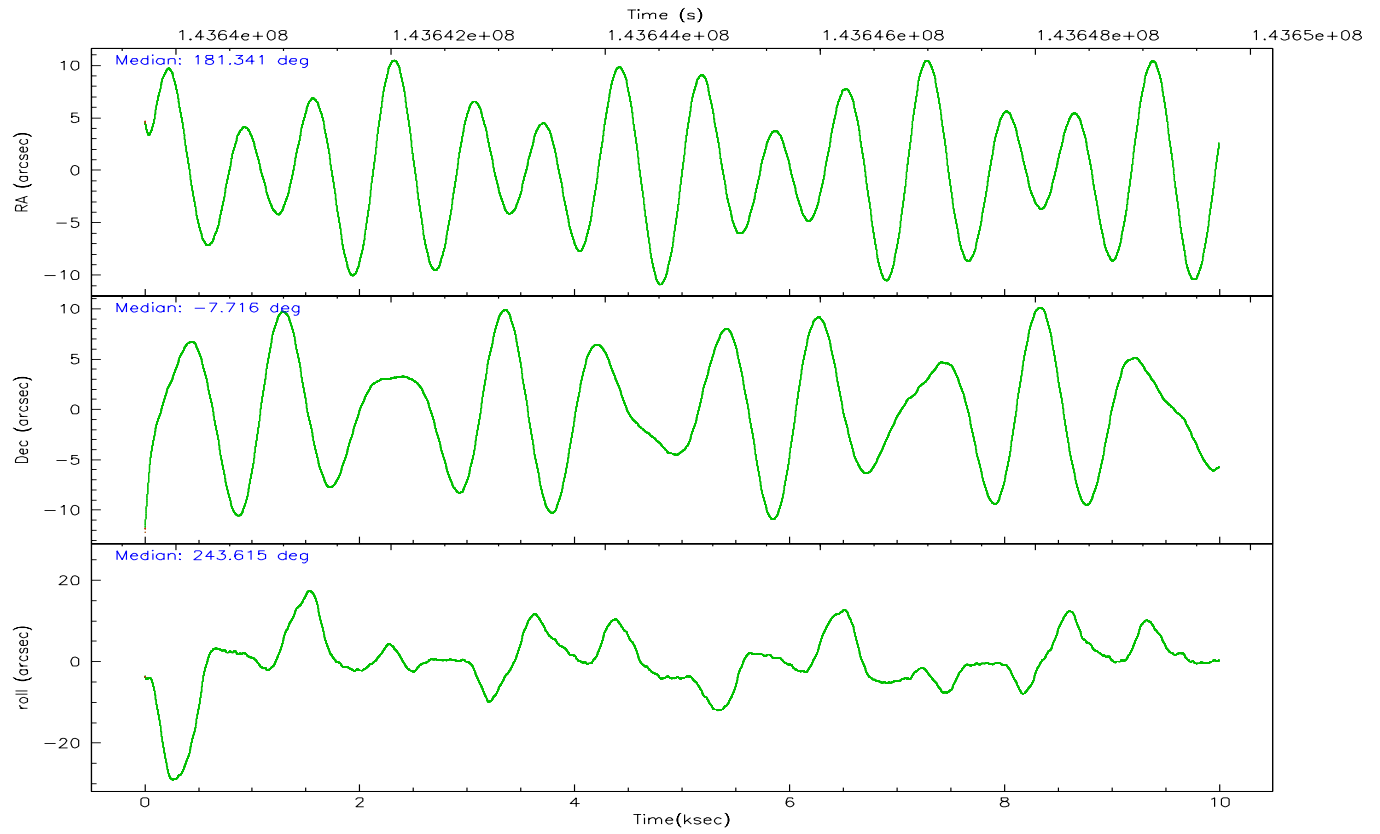
	ccd 2	ccd 3	ccd 5	ccd 6	ccd 7	ccd 8
grade 0 events	3735	3312	7316	3573	2093	7233
	5%	5%	7%	5%	2%	8%
grade 1 events	38	31	89	39	52	43
	0%	0%	0%	0%	0%	0%
grade 2 events	1793	1558	13066	1658	8036	4098
	2%	2%	13%	2%	9%	4%
grade 3 events	674	659	1019	799	1624	2698
	1%	1%	1%	1%	1%	3%
grade 4 events	690	720	996	705	1629	2573
	1%	1%	1%	1%	1%	3%
grade 5 events	2196	2515	4270	2748	5377	3417
	3%	4%	4%	4%	6%	4%
grade 6 events	1401	1373	22745	1570	19009	4857
	2%	2%	24%	2%	23%	5%
grade 7 events	54397	51175	44258	51965	43920	58105
	83%	83%	47%	82%	53%	69%

2.2 Compared Parameters

Parameter	Planned	Actual	Parameter	Planned	Actual
Instrument	ACIS	ACIS	Obspar format version number	6	6
Detector	ACIS-235678	ACIS-235678	Obspar file type	PREDICTED	ACTUAL
Grating	NONE	NONE	Obspar update status	NONE	UPDATED
Data mode	FAINT	FAINT	Number of optional ACIS chips dropped	0	0
Observation mode	POINTING	POINTING	On-chip summing requested	N	N
Pointing RA	181.338421	181.3405235261569	Subarray requested	NONE	NONE
Pointing Dec	-7.689595	-7.716770853171163	Alternating exposures requested	N	N
Pointing Roll	243.465734	243.6226487558143	Primary exposure time	0.000000	3.2
SIM focus pos (mm)	-0.684267	-0.6828225247311905			
SIM defocus (mm)	0	0.001444936568705701			
SIM translation stage pos (mm)	-190.132523	-190.1425803651734			
SIM translation stage offset (mm)	0	0.01005778216563158			
Observation start time	143639910.184000	143638944.48164			
Observation start date	2002-07-21T11:57:26	2002-07-21T11:42:24			
Observation end time	143649710.184000	143650160.0321			
Observation end date	2002-07-21T14:40:46	2002-07-21T14:49:20			
Read mode	TIMED	TIMED			

2.3 Aspect



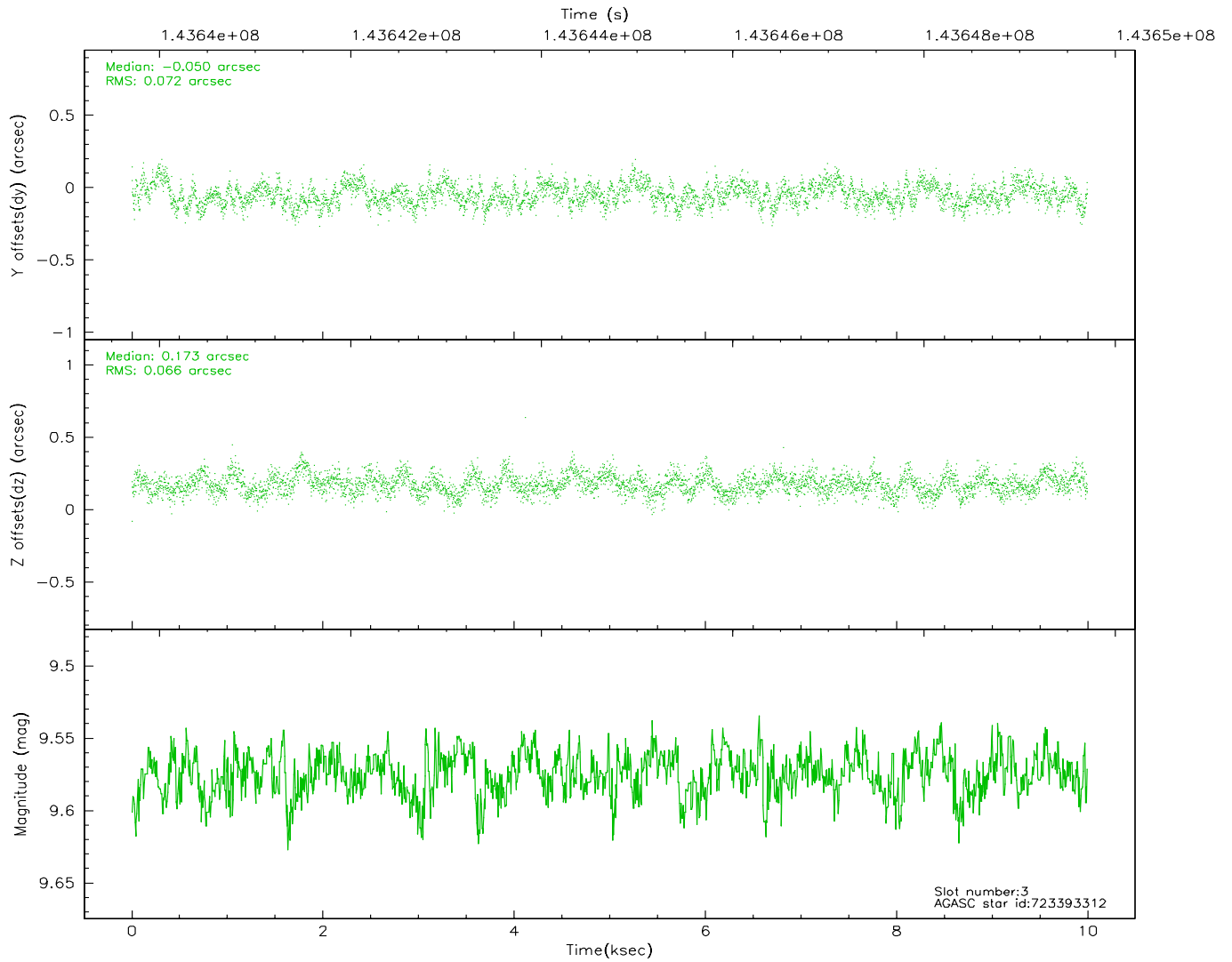
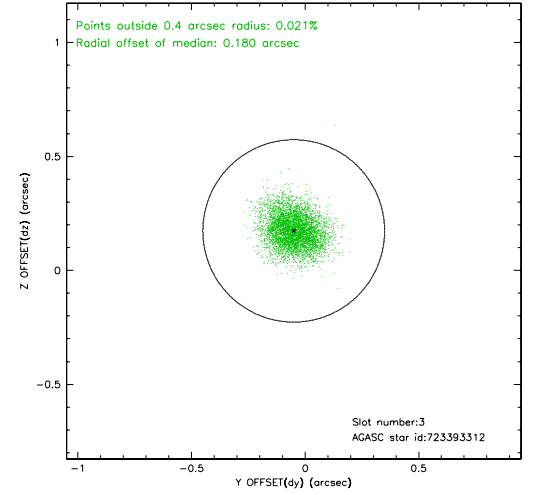
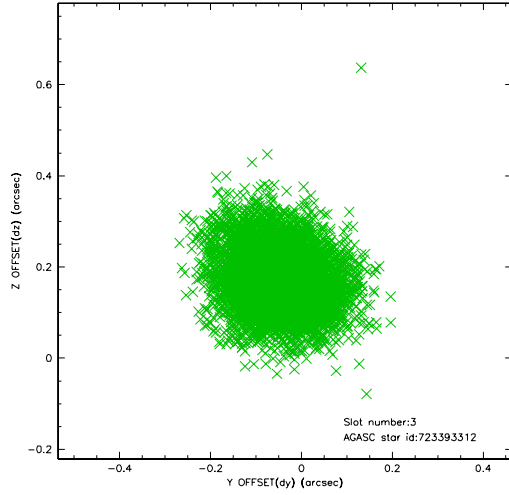


Slot Statistics

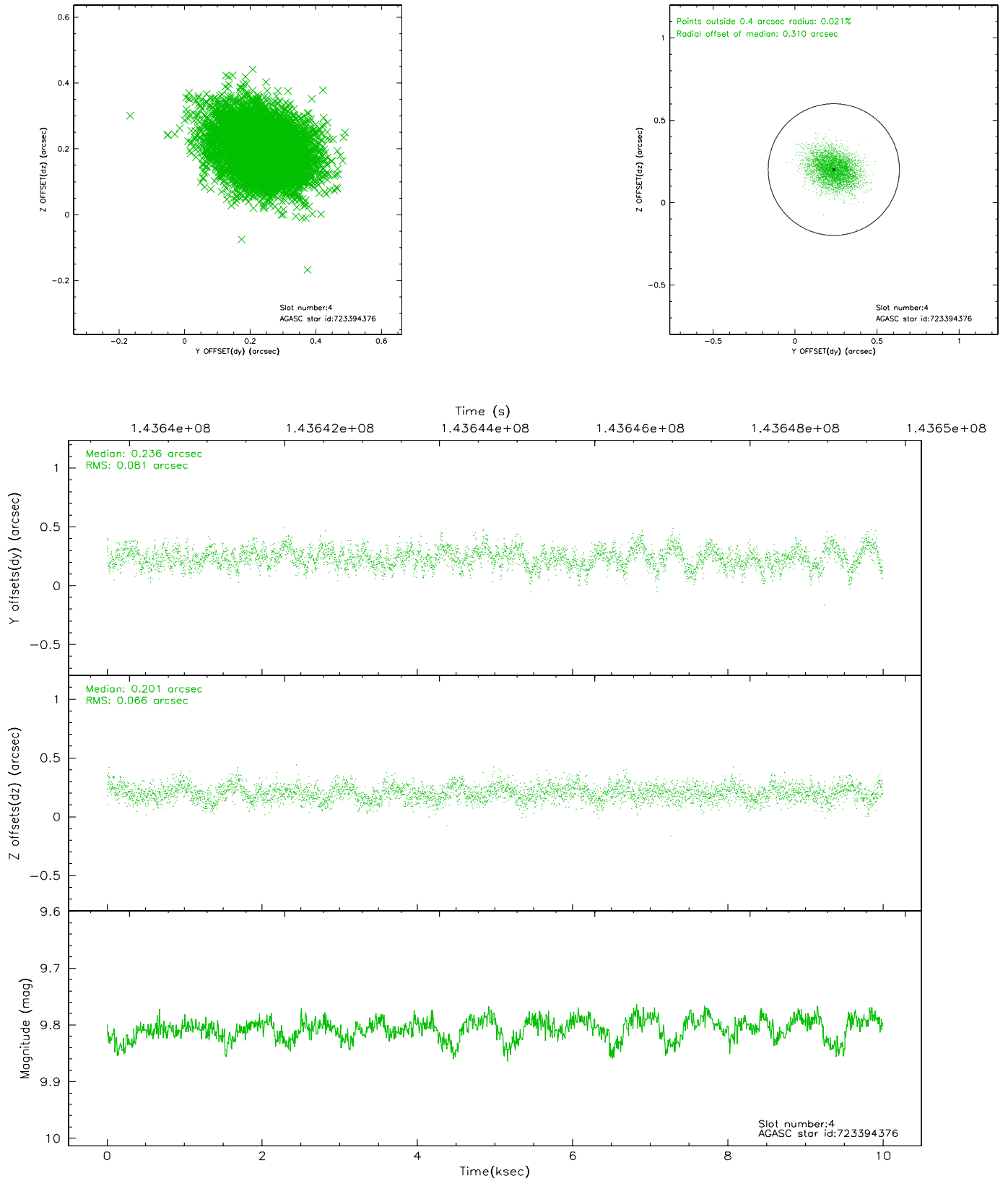
slot	status	id	mag	n_pts	med_dy	med_dz	dr1	dr2	ra	dec	mean_y	mean_z
0	FID	ACIS-S-2	7.11	2439	0.005	0.028	0.007	0.012	0.000000	0.000000	-755.13	-1728.85
1	FID	ACIS-S-4	7.20	2439	-0.080	-0.010	0.005	0.009	0.000000	0.000000	2157.84	179.02
2	FID	ACIS-S-5	7.24	2439	0.044	-0.010	0.006	0.011	0.000000	0.000000	-1807.23	173.34
3	GUIDE	723393312	9.57	4866	-0.050	0.173	0.104	0.168	181.846894	-7.525205	-1338.52	1360.35
4	GUIDE	723394376	9.81	4873	0.236	0.201	0.111	0.179	181.467227	-8.140366	1247.54	1136.76
5	GUIDE	648154656	10.43	4873	-0.089	-0.237	0.152	0.243	181.068434	-6.950473	-1948.00	-2051.63
6	GUIDE	648159104	9.23	4870	-0.134	-0.072	0.107	0.172	180.971351	-6.928701	-1863.61	-2397.47
7	GUIDE	648158136	10.42	4714	0.041	-0.063	0.158	0.260	180.712636	-7.426767	153.75	-2420.65

2.4 Star Slots

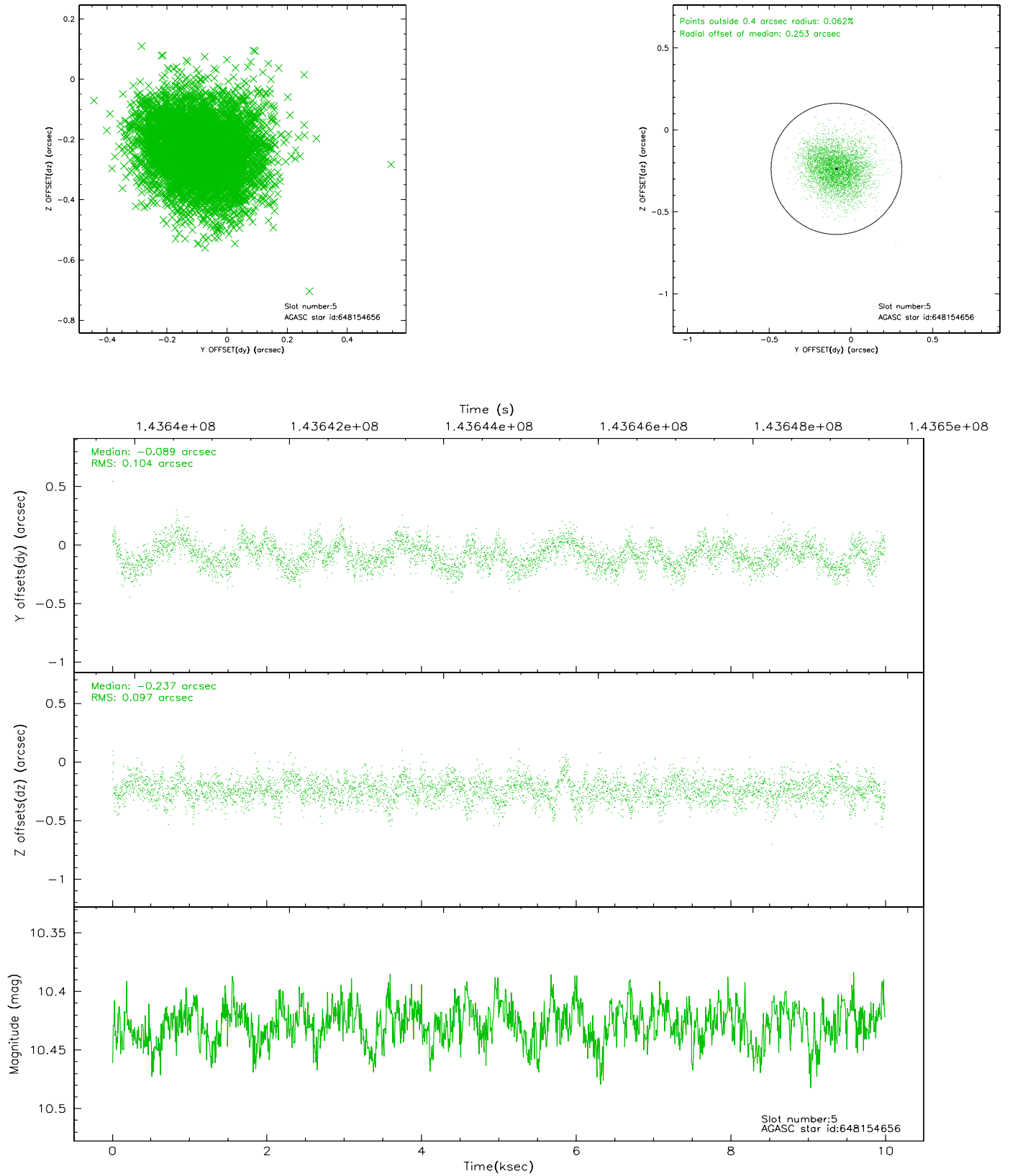
2.4.1 Slot 3



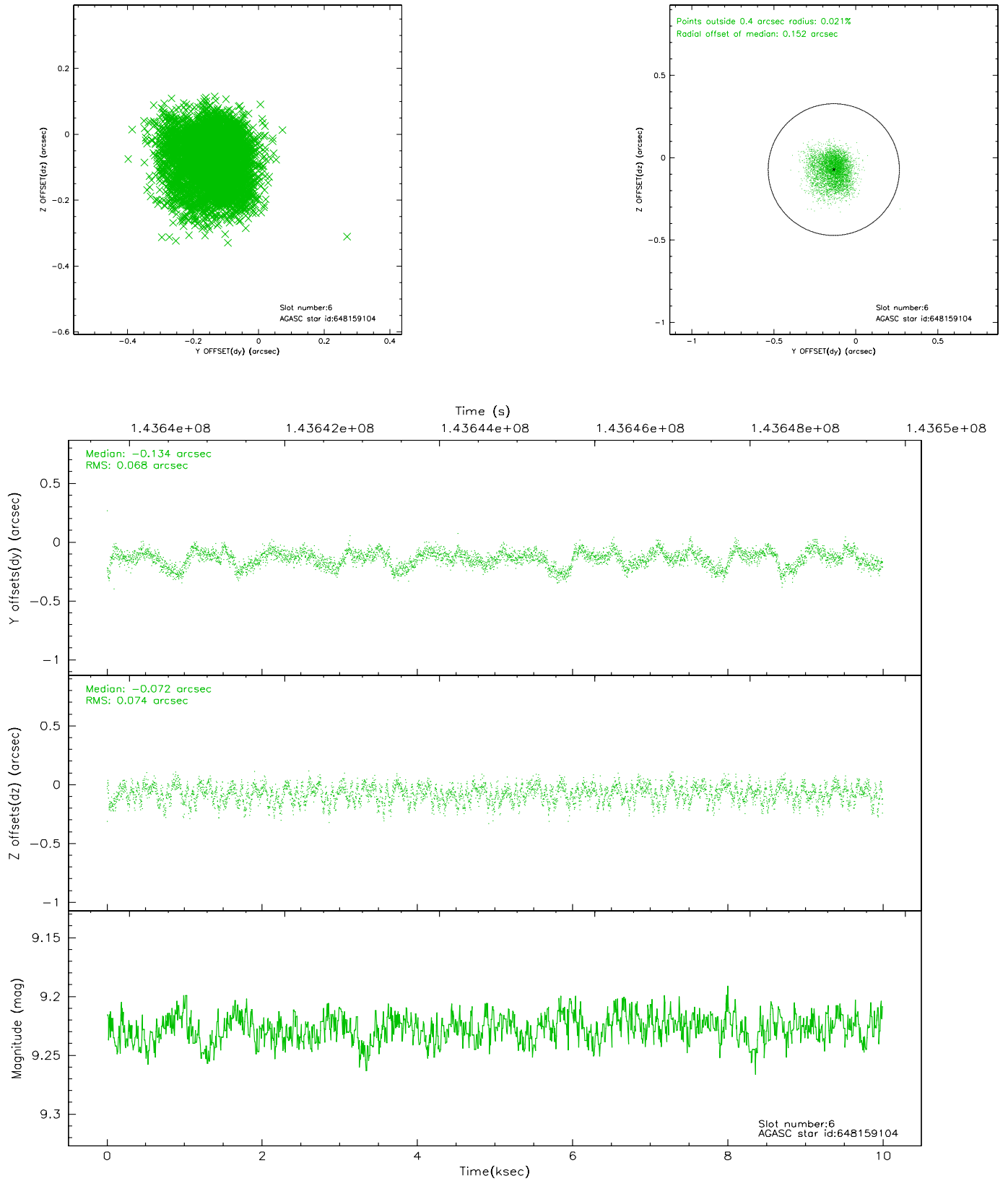
2.4.2 Slot 4



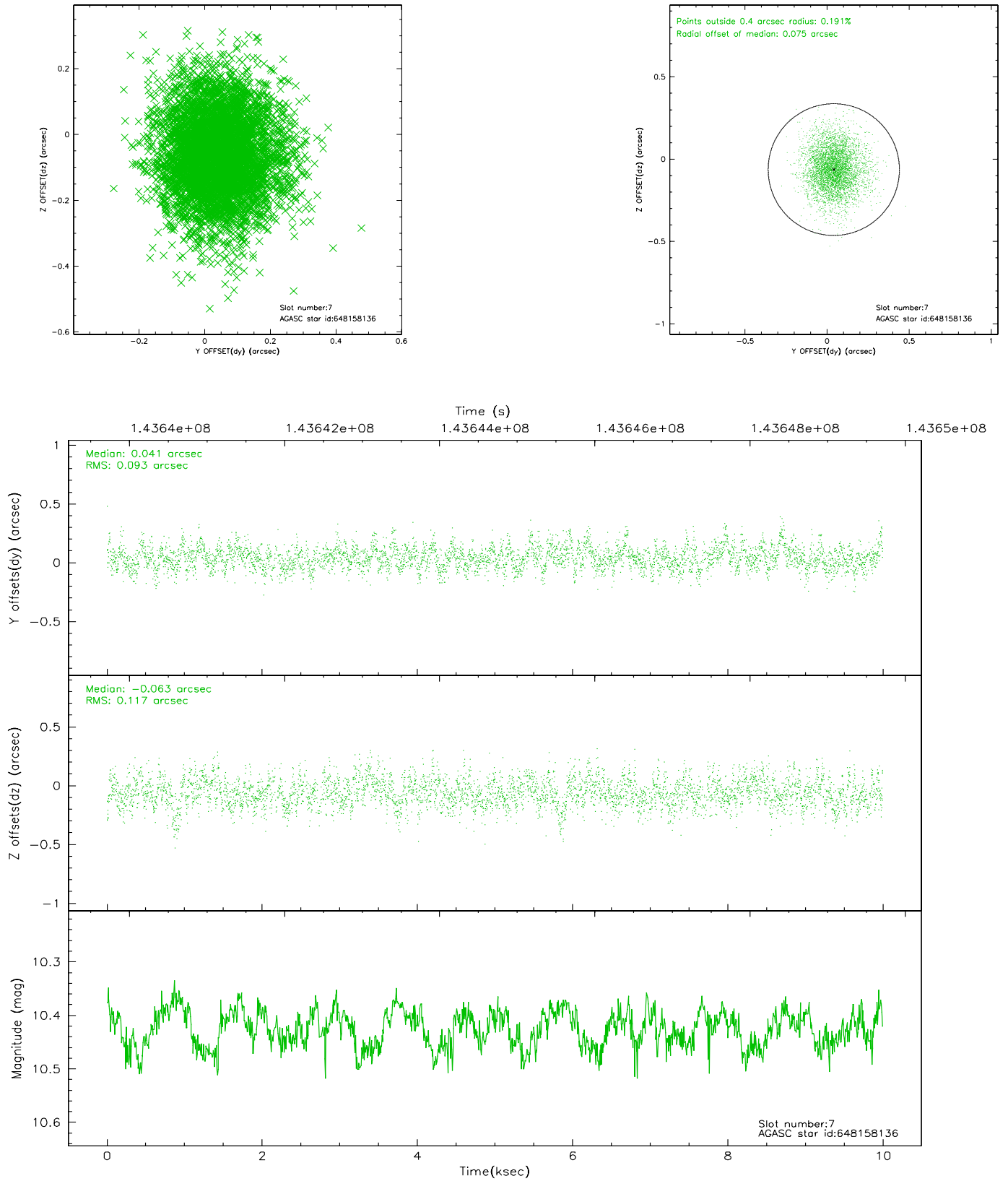
2.4.3 Slot 5



2.4.4 Slot 6

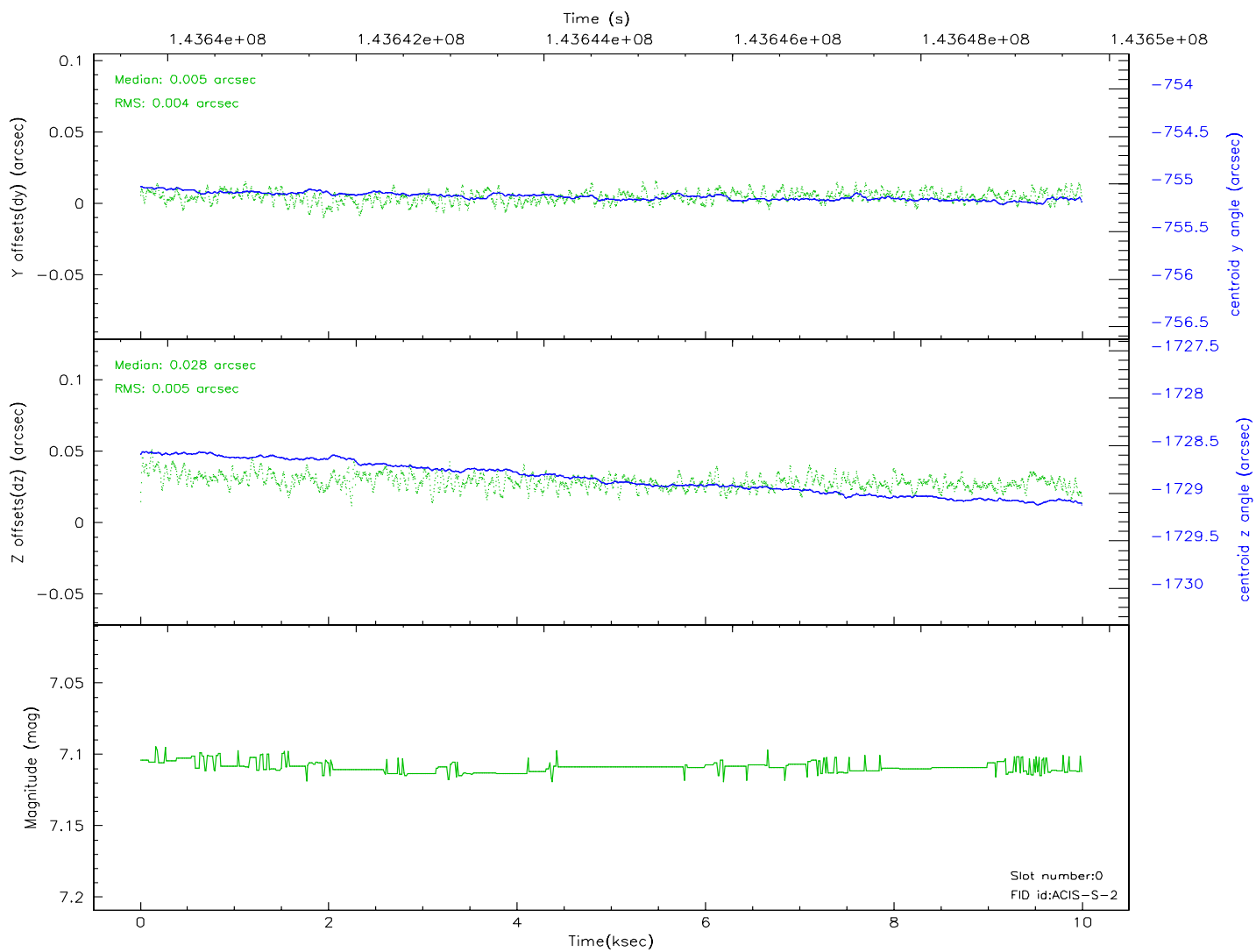
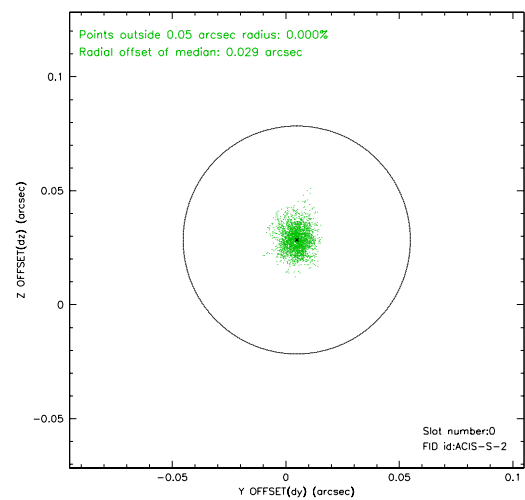
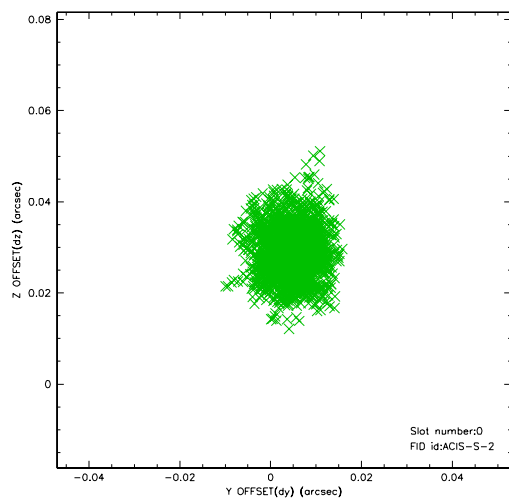


2.4.5 Slot 7

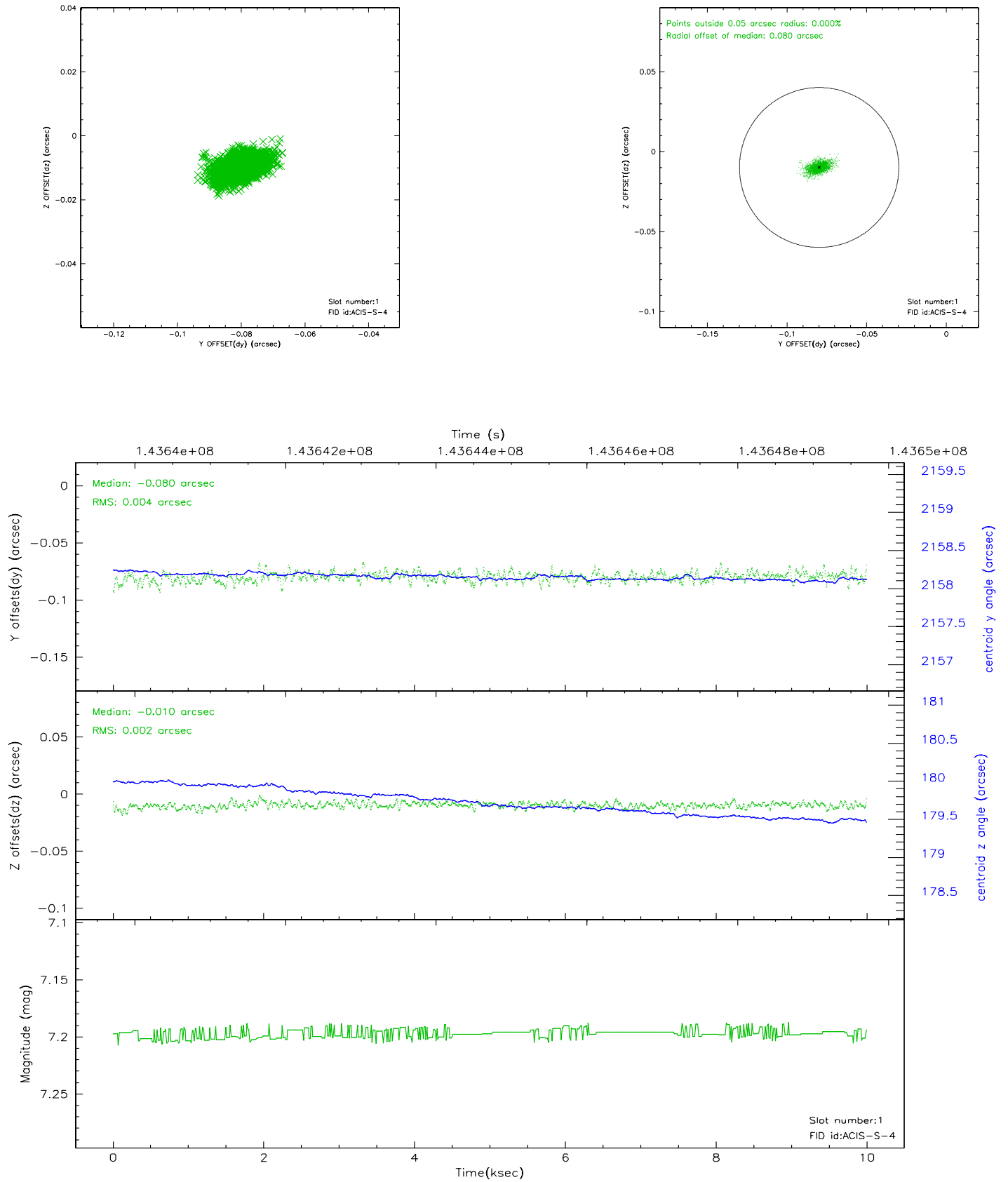


2.5 FID Slots

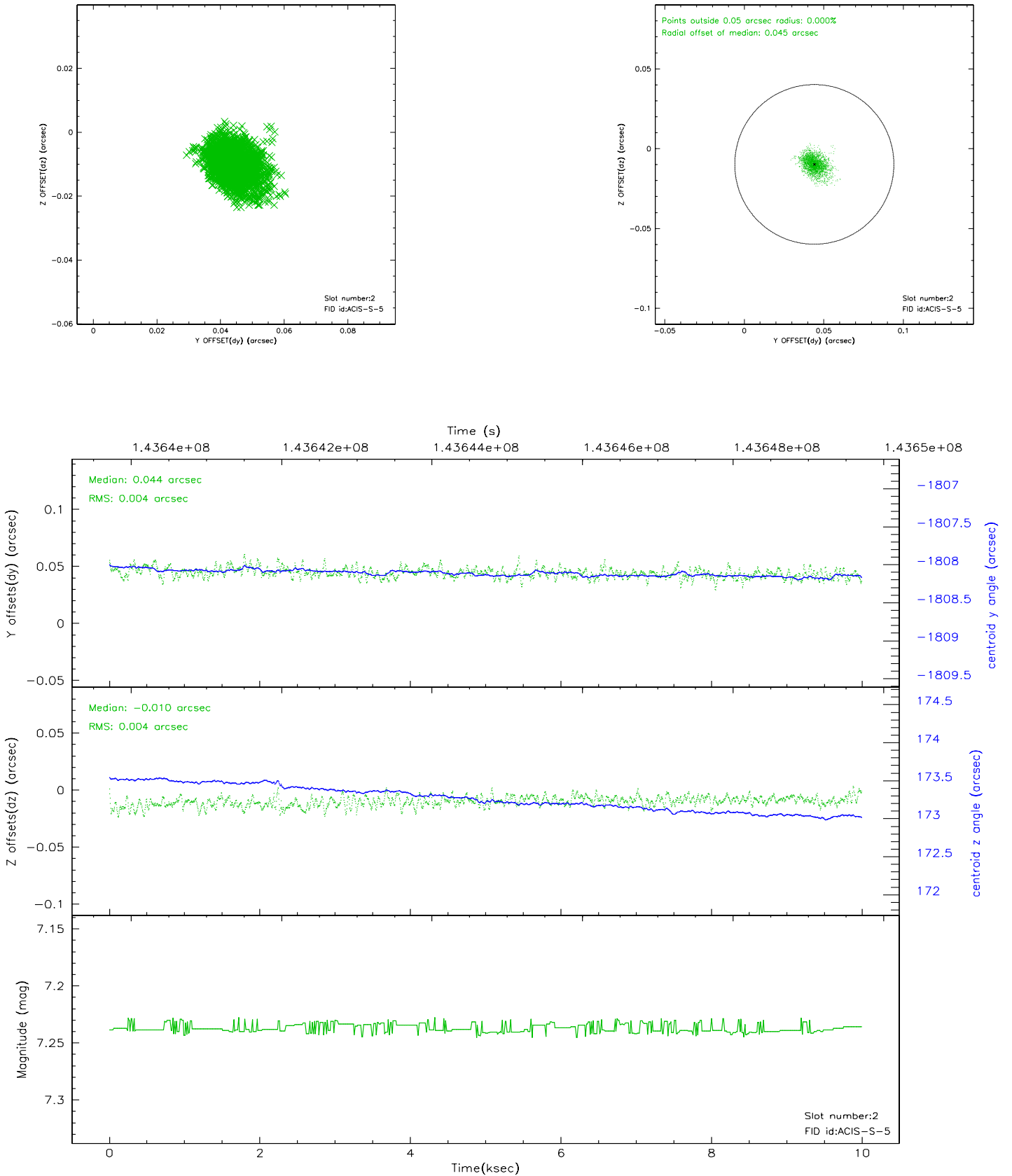
2.5.1 Slot 0



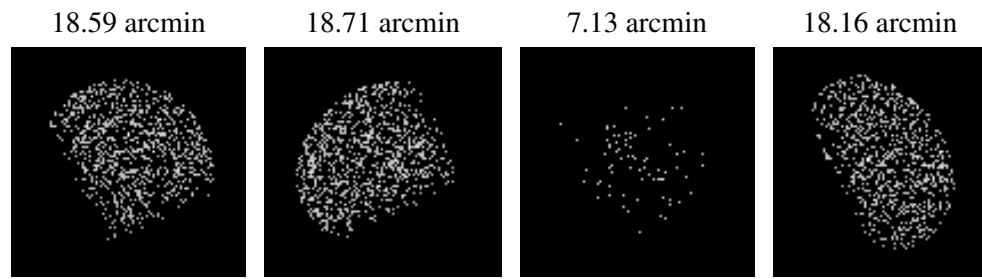
2.5.2 Slot 1



2.5.3 Slot 2



3 Point Sources



A Summary

A.1 Status

V&V Scientist	Jen Lauer
V&V Date (YYYY-MM-DD)	2006.09.26
V&V Edition	1
V&V Disposition and Status	OK
V&V Charge Time	9.763

A.2 Comments