

V&V Reference Report

L2 ASCDS Version : 7.6.9

Observation 3024 - L2 Version 001
Chandra X-Ray Center

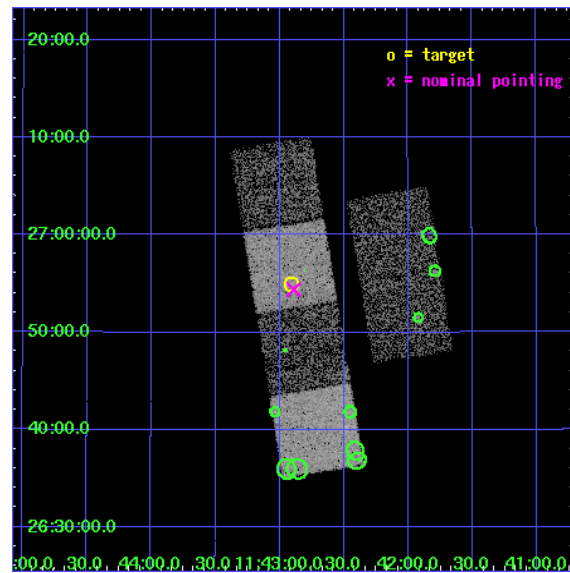
L2 Processing Date : Sep 22 2006

Contents

1	Front	2
2	OBI	3
2.1	OBI	3
2.1.1	Images	3
2.1.2	Bias	3
2.1.3	Parameters	4
2.1.4	Events	4
2.2	Compared Parameters	5
2.3	Aspect	6
2.4	Star Slots	9
2.4.1	Slot 3	9
2.4.2	Slot 4	10
2.4.3	Slot 5	11
2.4.4	Slot 6	12
2.4.5	Slot 7	13
2.5	FID Slots	14
2.5.1	Slot 0	14
2.5.2	Slot 1	15
2.5.3	Slot 2	16
3	Point Sources	17
A	Summary	18
A.1	Status	18
A.2	Comments	18

1 Front

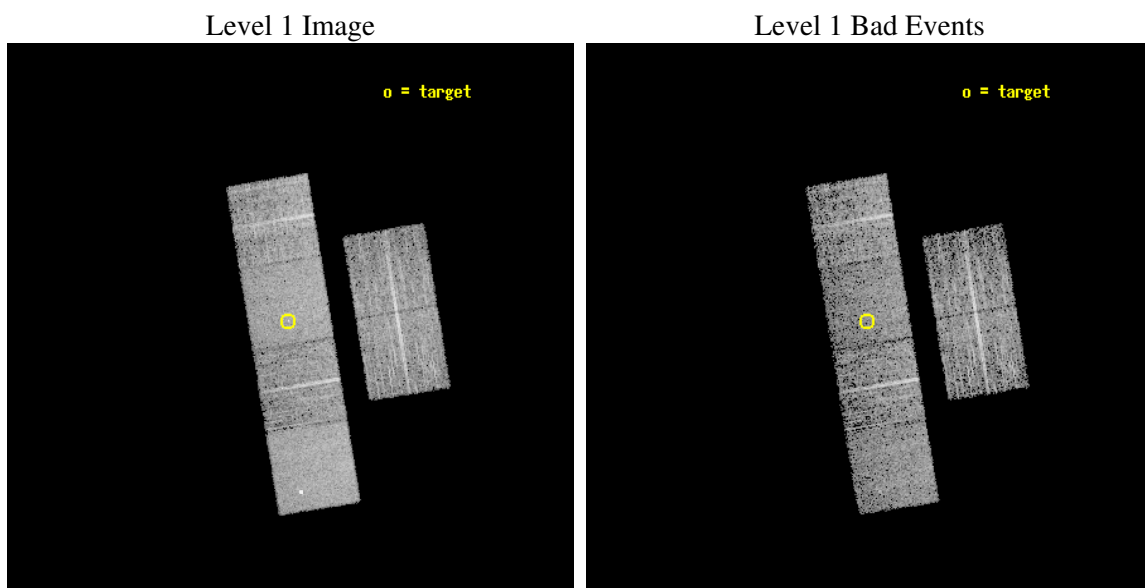
seq_num	700463
obs_id	3024
title	A SYSTEMATIC X-RAY SURVEY OF SUBMILLIMETRE-LUMINOUS QUASARS
observer	Dr Robert Priddey
object	HS1140+2711
dtcycle	0
cycle	P
ra_targ	175.726125
dec_targ	26.916056
ra_nom	175.72242897102
dec_nom	26.906928442114
roll_nom	260.71362756046
revision	2
ontime	4966.3999814987
livetime	4903.5124345259
ontime2	4966.3999814987
ontime3	4966.3999814987
ontime5	4966.3999814987
ontime6	4966.3999814987
ontime7	4966.3999814987
ontime8	4966.3999814987
l2events	49704



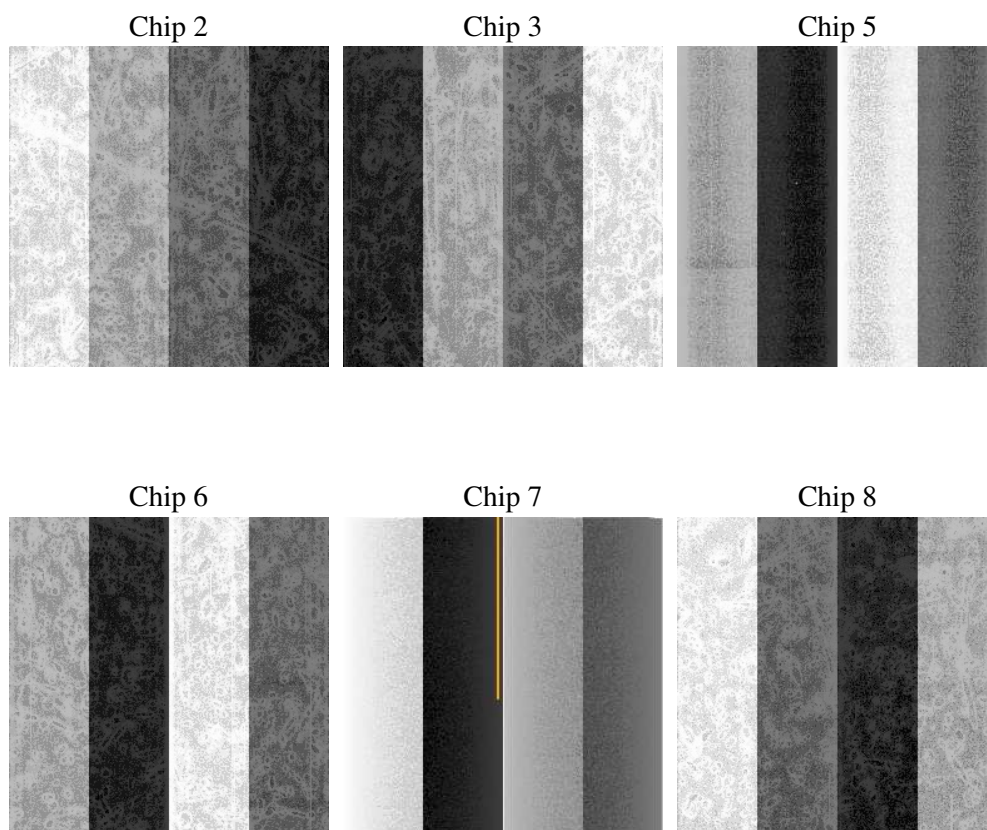
2 OBI

2.1 OBI

2.1.1 Images



2.1.2 Bias



2.1.3 Parameters

obi_num	0
ascdsver	7.6.9
caldsver	3.2.3
date	2006-09-22T22:48:03
revision	2

sched_exp_time	5000.000000
ontime	4971.6909942925
ontime2	4971.6909942925
ontime3	4971.6909942925
ontime5	4971.6909942925
ontime6	4971.6909942925
ontime7	4971.6909942925
ontime8	4971.6909942925
l1events	235137

2.1.4 Events

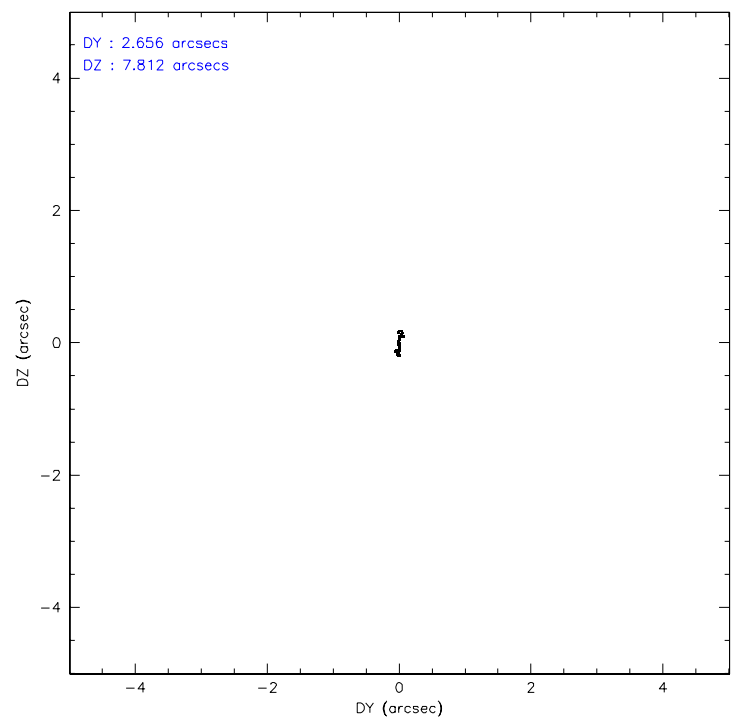
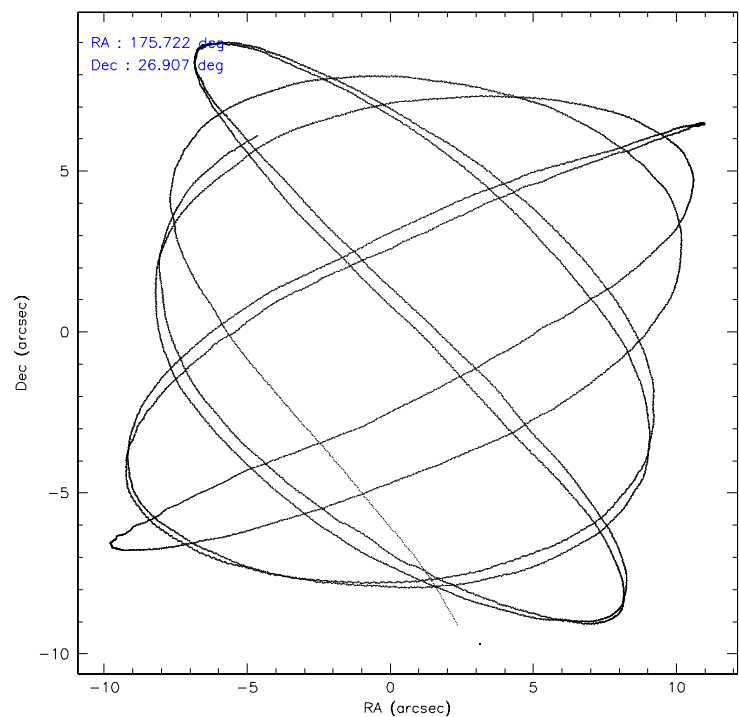
	ccd 2	ccd 3	ccd 5	ccd 6	ccd 7	ccd 8
level 1 events	36649	32443	47679	33647	42853	41866
rejected events	32692	28818	27031	29616	26143	33348
rejected %	89%	88%	56%	88%	61%	79%

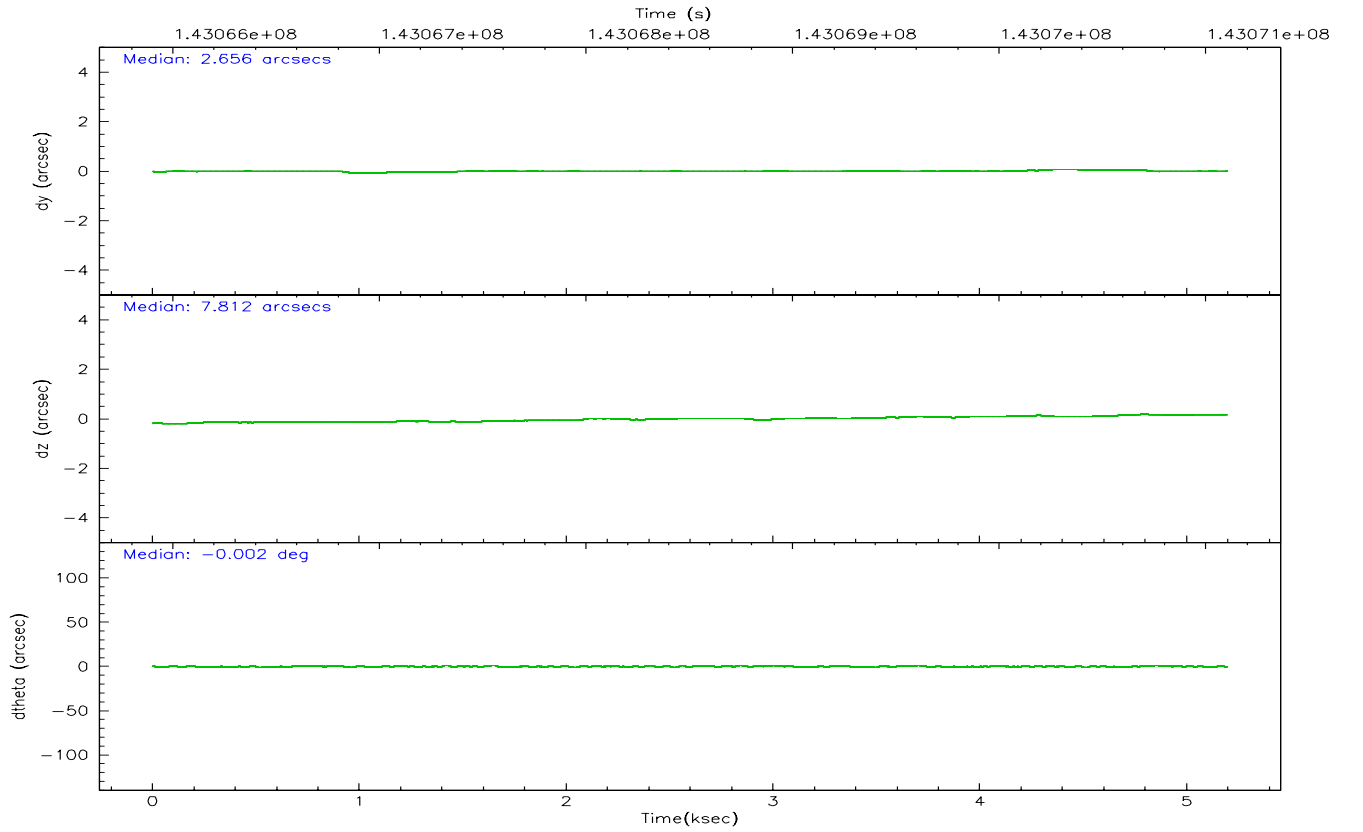
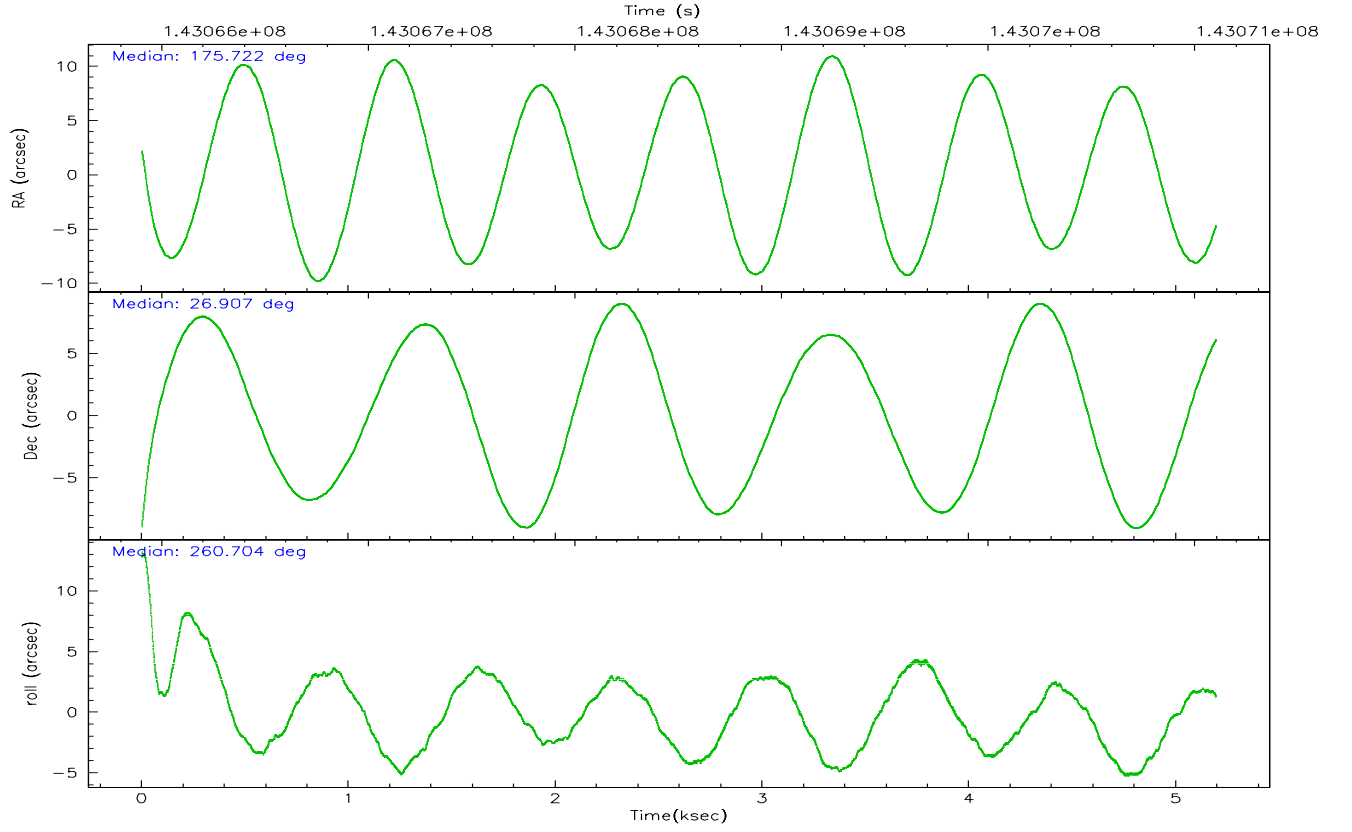
	ccd 2	ccd 3	ccd 5	ccd 6	ccd 7	ccd 8
grade 0 events	1684	1539	1181	1700	1151	2568
	4%	4%	2%	5%	2%	6%
grade 1 events	24	9	35	15	24	32
	0%	0%	0%	0%	0%	0%
grade 2 events	882	743	6320	804	4036	1855
	2%	2%	13%	2%	9%	4%
grade 3 events	355	319	683	370	833	922
	0%	0%	1%	1%	1%	2%
grade 4 events	349	346	487	368	866	881
	0%	1%	1%	1%	2%	2%
grade 5 events	1166	1305	2306	1477	2889	1826
	3%	4%	4%	4%	6%	4%
grade 6 events	690	682	11986	791	9836	2294
	1%	2%	25%	2%	22%	5%
grade 7 events	31499	27500	24681	28122	23218	31488
	85%	84%	51%	83%	54%	75%

2.2 Compared Parameters

Parameter	Planned	Actual	Parameter	Planned	Actual
Instrument	ACIS	ACIS	Obspar format version number	6	6
Detector	ACIS-235678	ACIS-235678	Obspar file type	PREDICTED	ACTUAL
Grating	NONE	NONE	Obspar update status	NONE	UPDATED
Data mode	FAINT	FAINT	Number of optional ACIS chips dropped	0	0
Observation mode	POINTING	POINTING	On-chip summing requested	N	N
Pointing RA	175.711336	175.7224289710162	Subarray requested	NONE	NONE
Pointing Dec	26.932269	26.90692844211439	Alternating exposures requested	N	N
Pointing Roll	260.561991	260.7136275604648	Primary exposure time	0.000000	3.2
SIM focus pos (mm)	-0.684267	-0.6828225247311905			
SIM defocus (mm)	0	0.001444936568705701			
SIM translation stage pos (mm)	-190.132523	-190.1400660498719			
SIM translation stage offset (mm)	0	0.00754346686406393			
Observation start time	143066100.184000	143065135.62056			
Observation start date	2002-07-14T20:33:56	2002-07-14T20:18:55			
Observation end time	143071100.184000	143071606.44583			
Observation end date	2002-07-14T21:57:16	2002-07-14T22:06:46			
Read mode	TIMED	TIMED			

2.3 Aspect



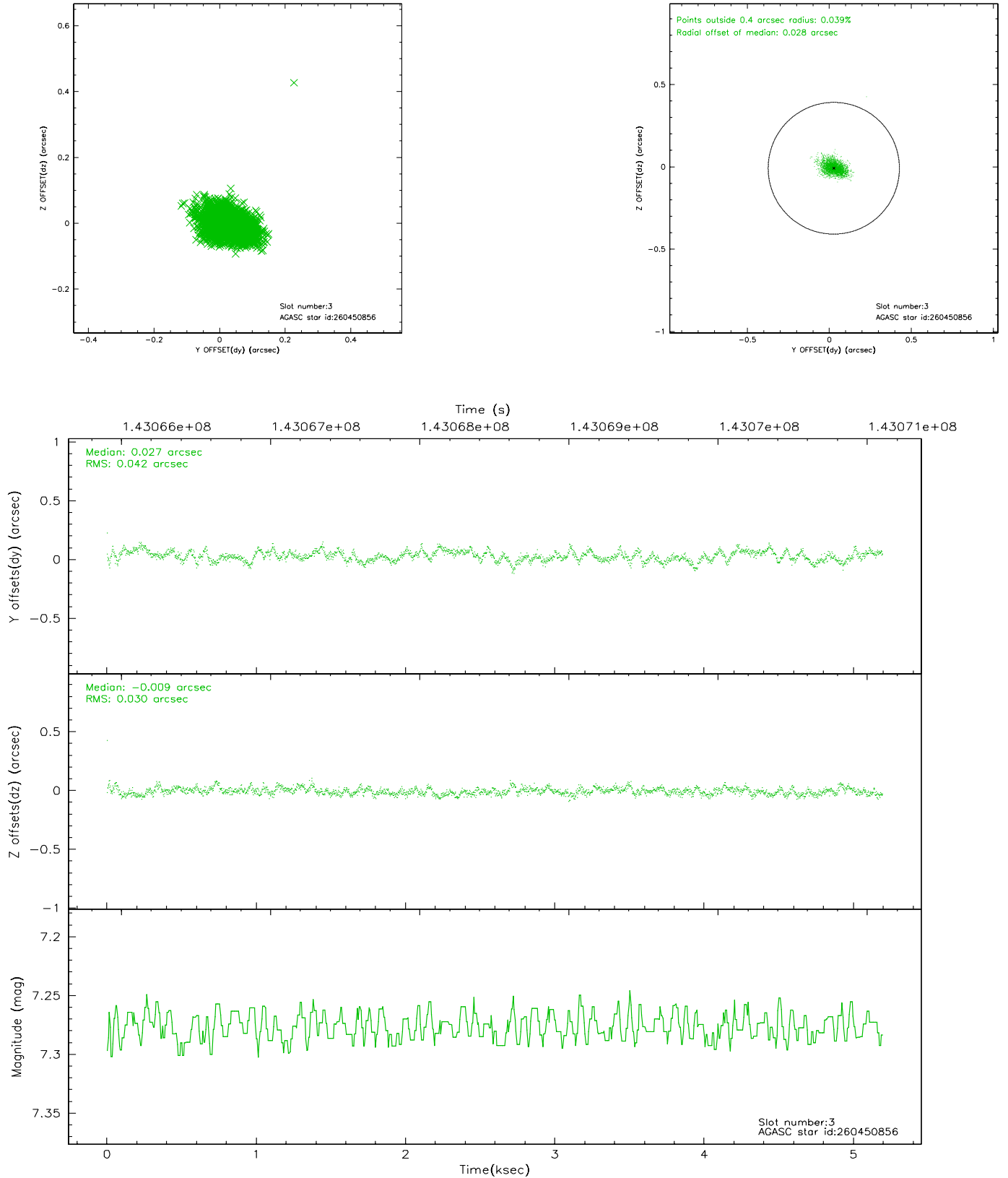


Slot Statistics

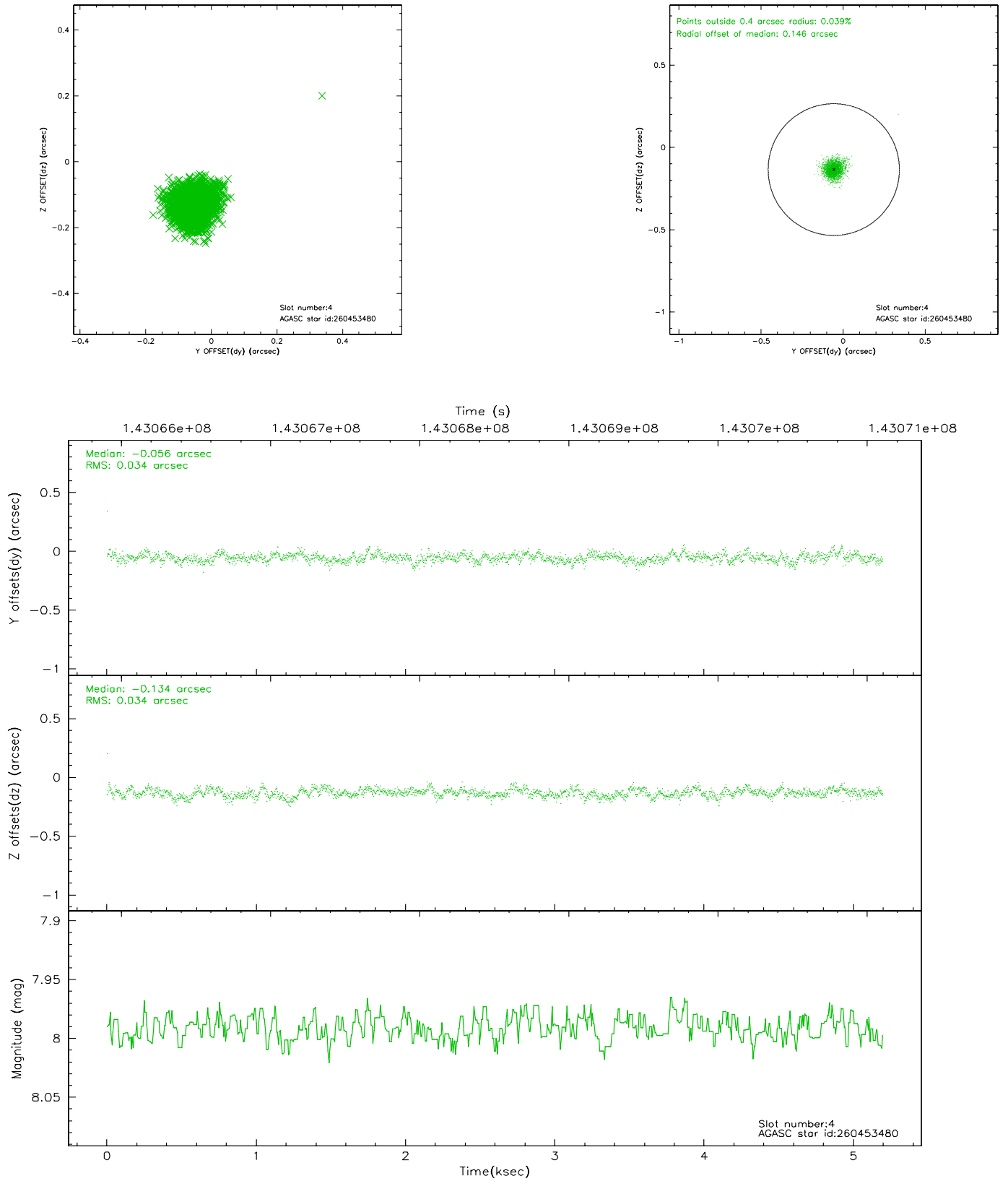
slot	status	id	mag	n_pts	med_dy	med_dz	dr1	dr2	ra	dec	mean_y	mean_z
0	FID	ACIS-S-3	7.34	1266	-0.075	-0.010	0.009	0.014	0.000000	0.000000	57.78	-1858.06
1	FID	ACIS-S-4	7.20	1266	-0.041	0.044	0.006	0.010	0.000000	0.000000	2158.07	178.17
2	FID	ACIS-S-5	7.24	1267	0.088	-0.025	0.007	0.010	0.000000	0.000000	-1806.54	173.32
3	GUIDE	260450856	7.28	2535	0.027	-0.009	0.053	0.088	176.355853	27.217982	-1359.47	1867.72
4	GUIDE	260453480	7.99	2534	-0.056	-0.134	0.050	0.082	175.865114	27.568448	-2341.56	110.76
5	GUIDE	260447656	8.41	2534	0.014	0.087	0.058	0.092	176.243294	27.407138	-1970.51	1398.22
6	GUIDE	260062872	8.86	2529	-0.065	-0.040	0.060	0.096	175.379704	27.626947	-2296.49	-1451.69
7	GUIDE	260064728	9.05	2534	0.080	0.097	0.066	0.108	175.679144	27.248869	-1108.93	-287.56

2.4 Star Slots

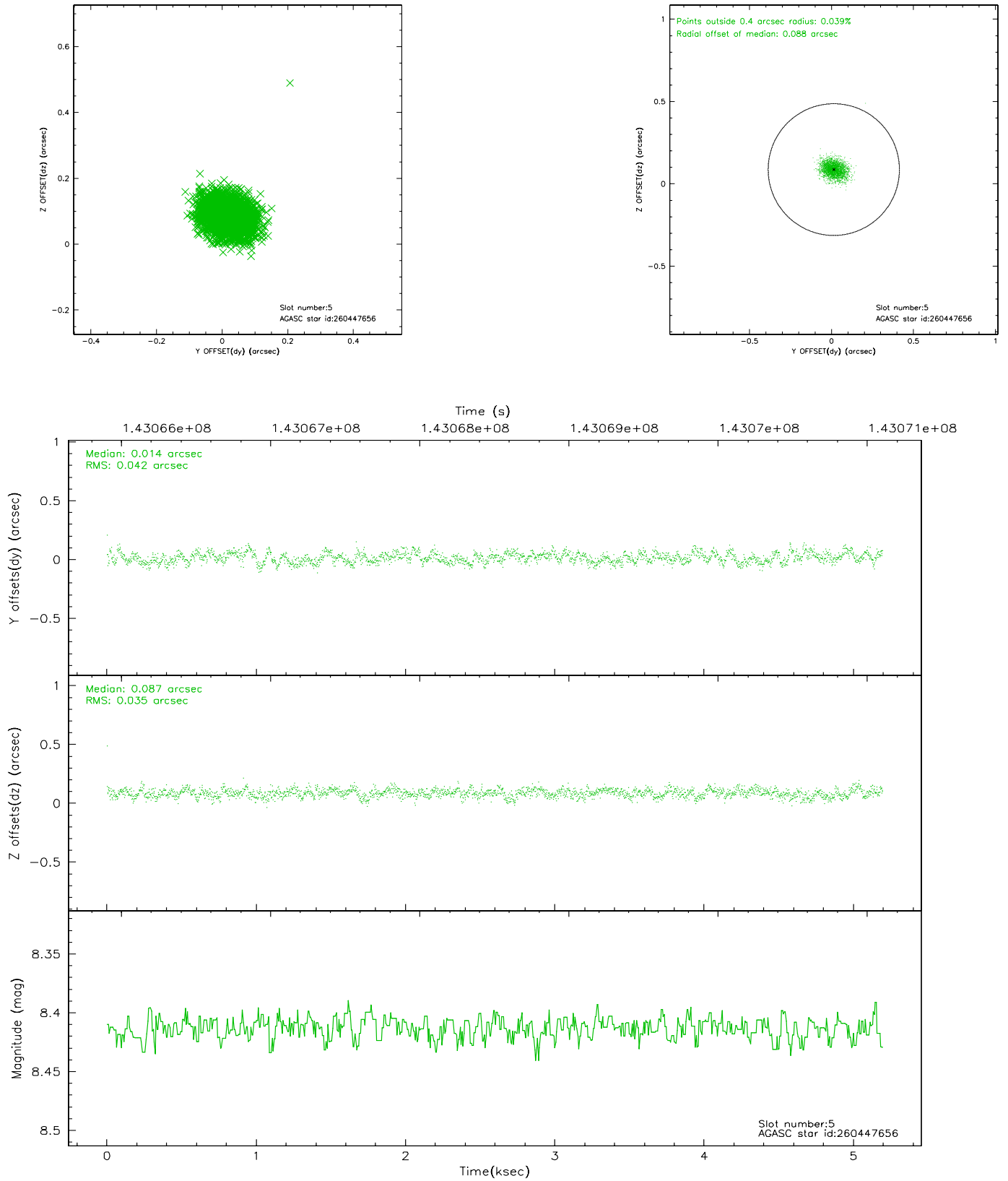
2.4.1 Slot 3



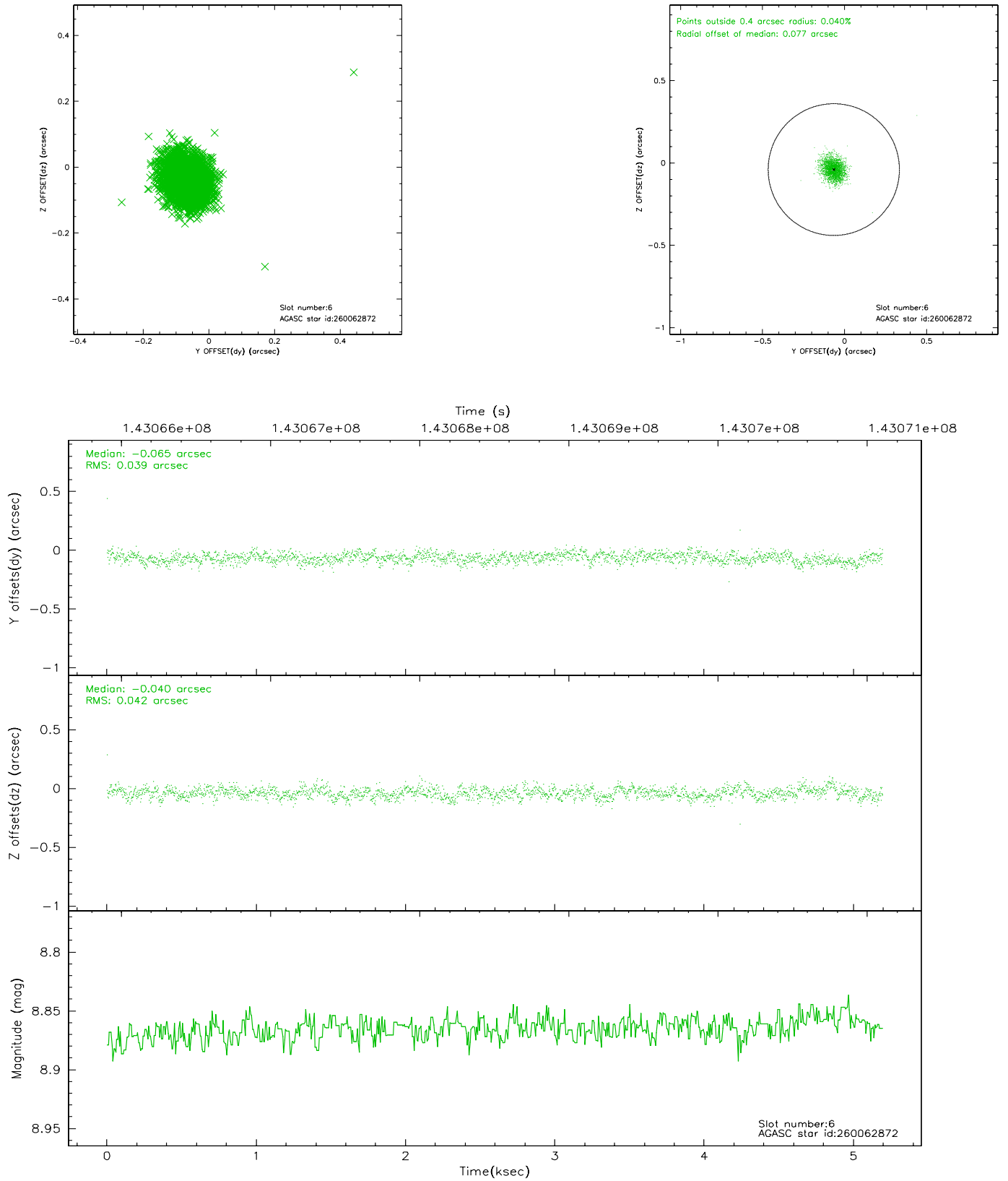
2.4.2 Slot 4



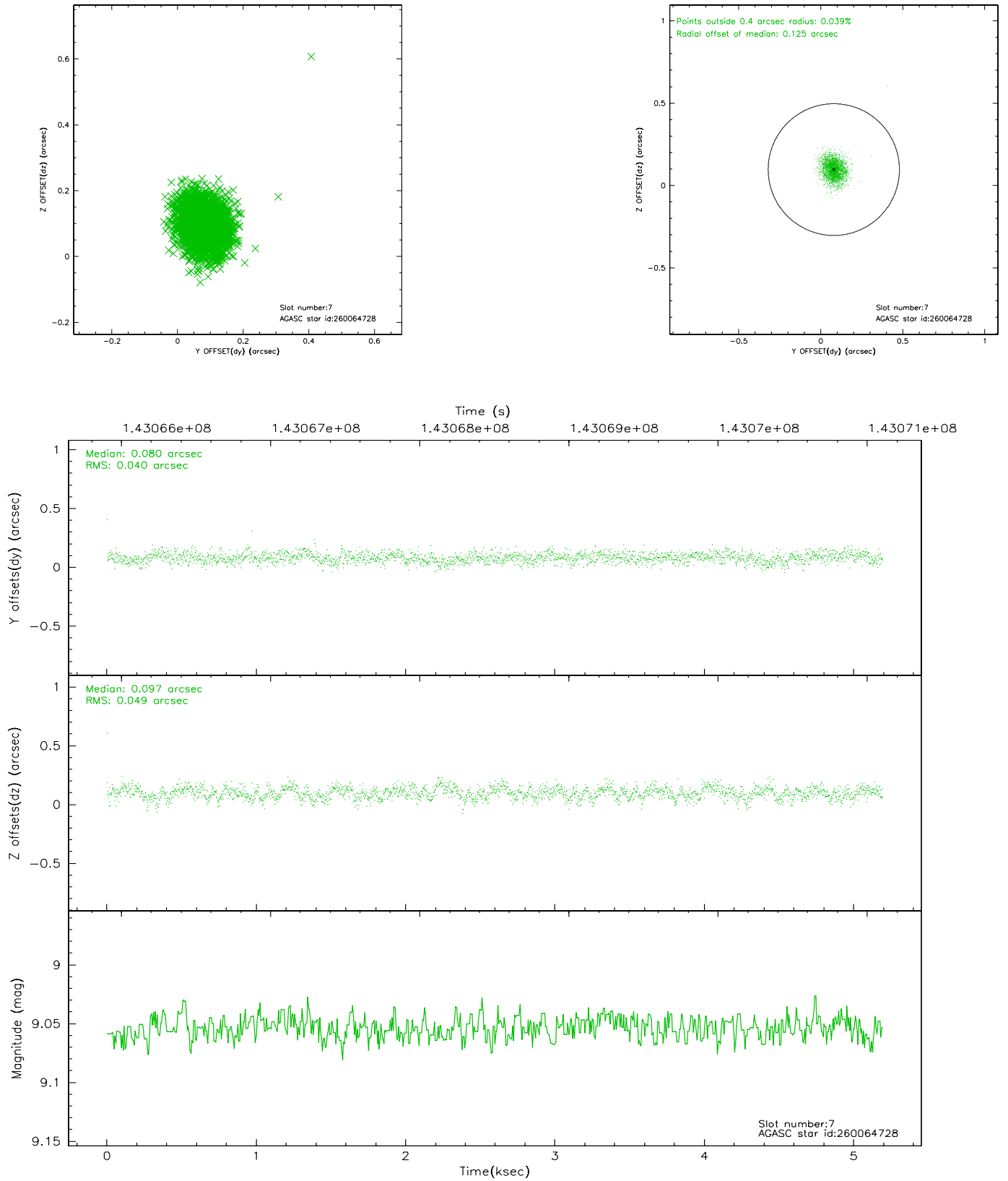
2.4.3 Slot 5



2.4.4 Slot 6

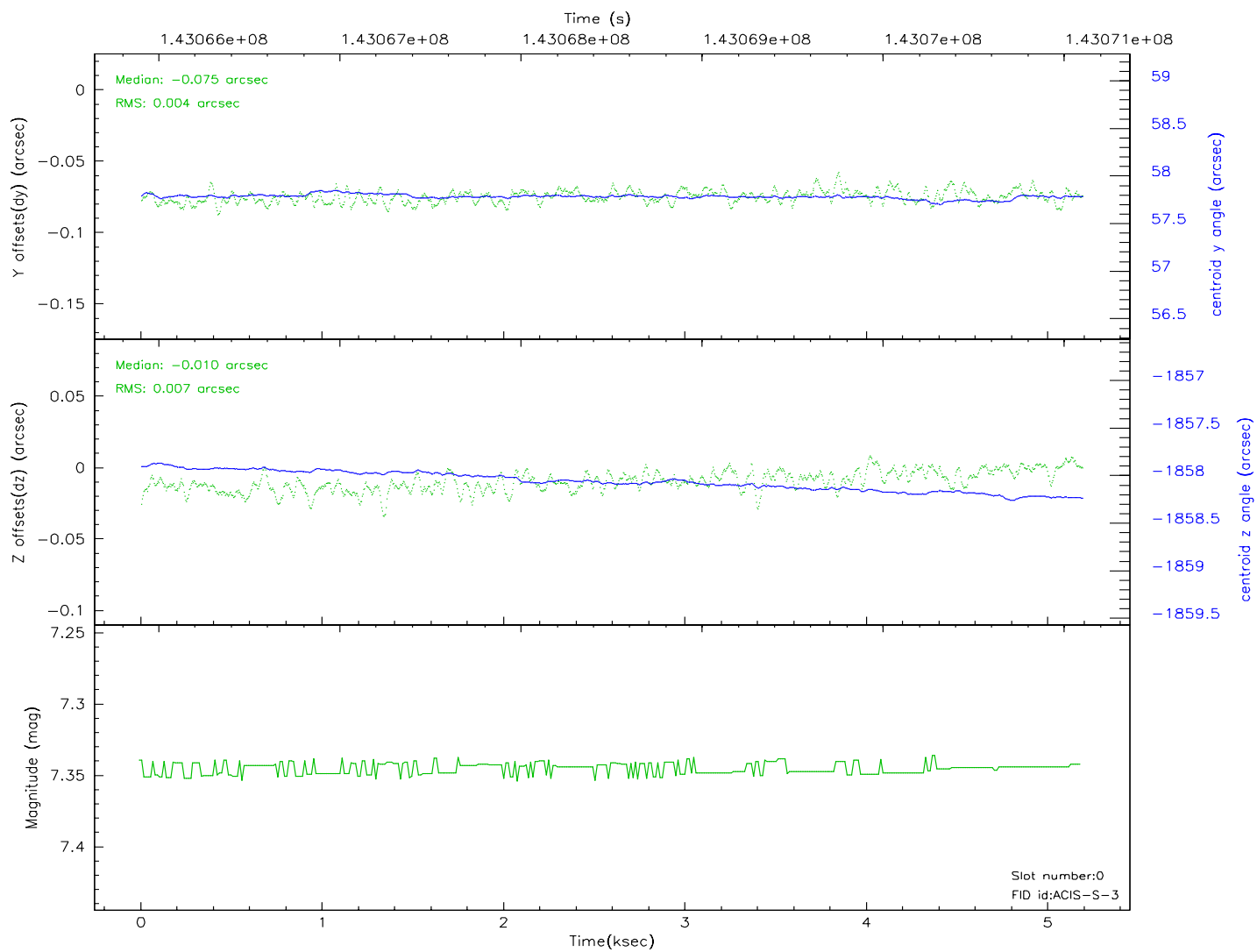
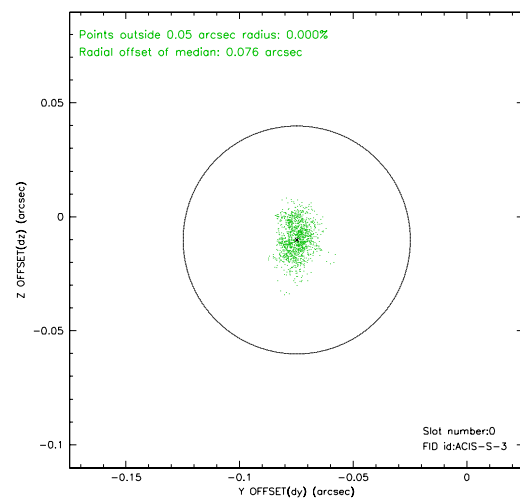
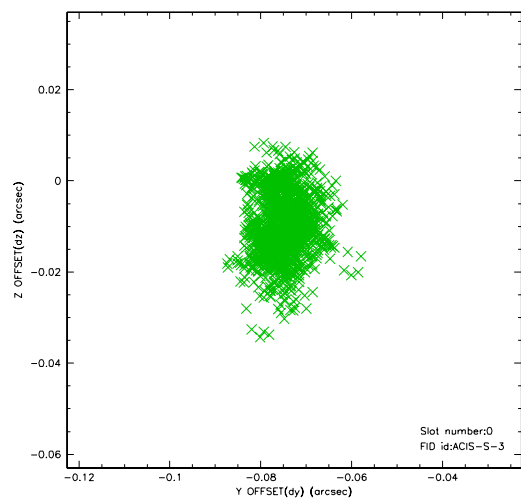


2.4.5 Slot 7

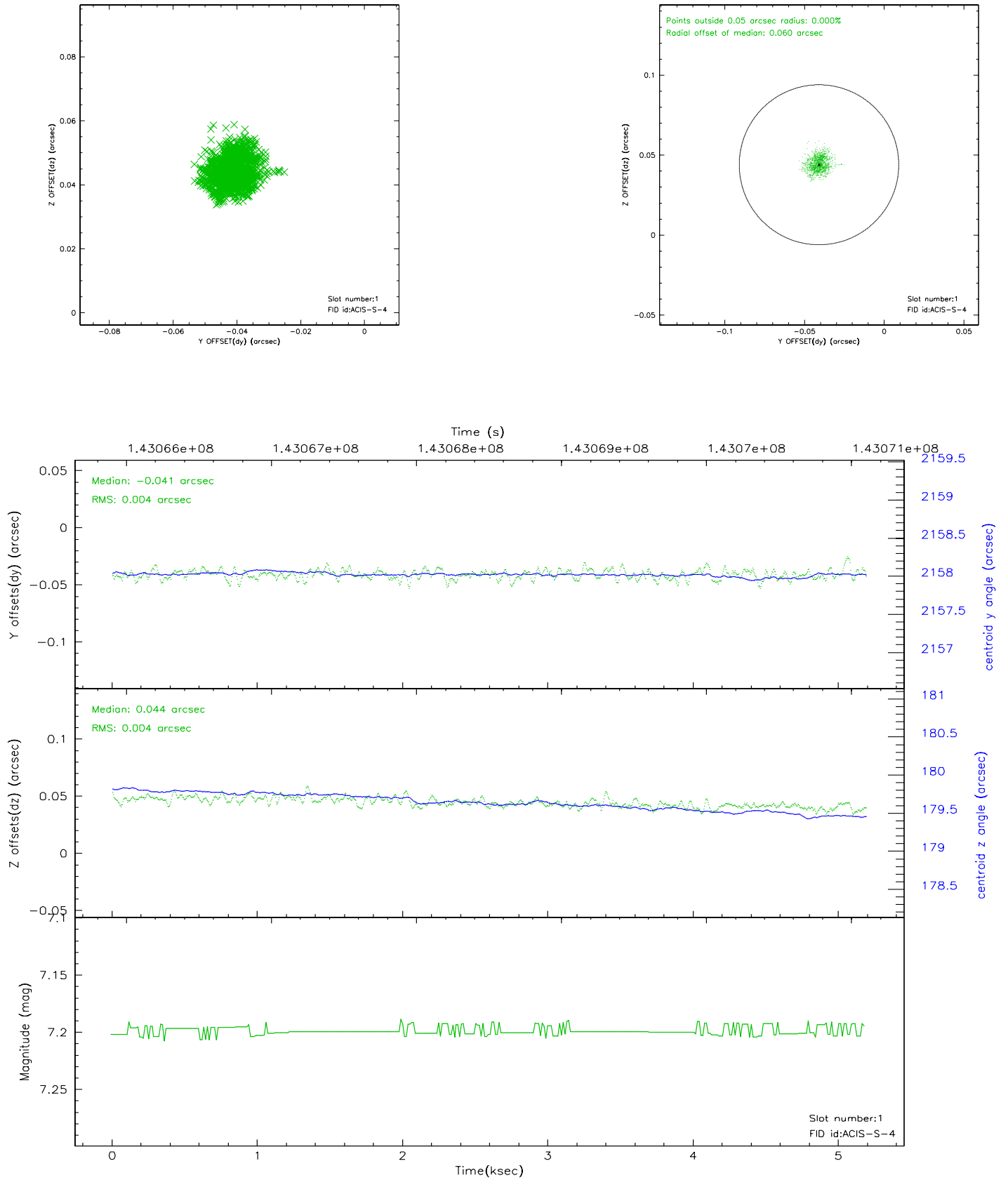


2.5 FID Slots

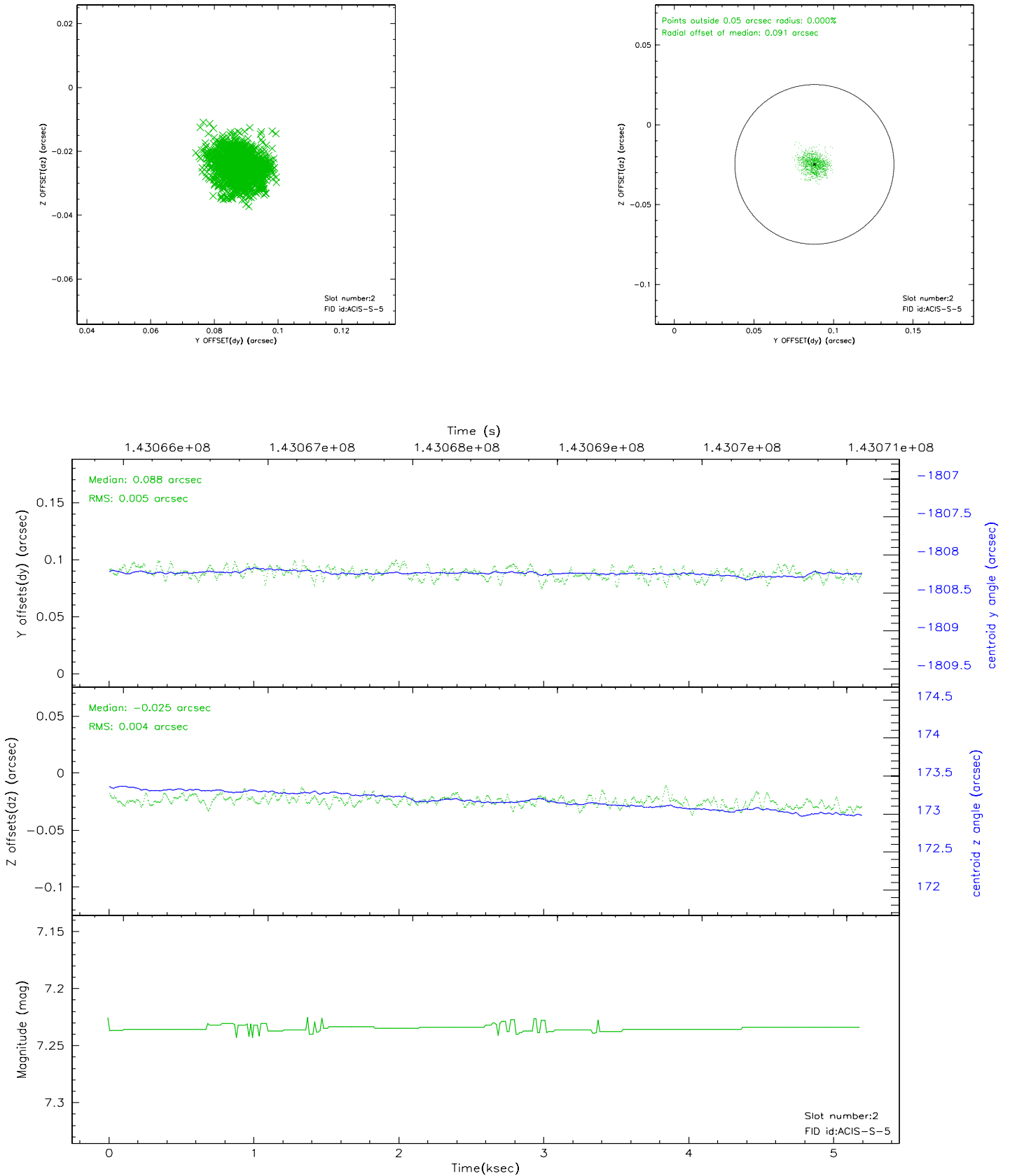
2.5.1 Slot 0



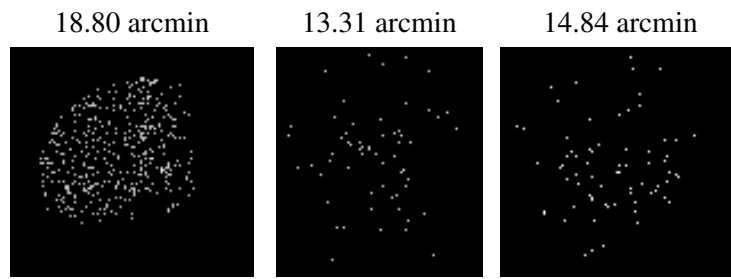
2.5.2 Slot 1



2.5.3 Slot 2



3 Point Sources



A Summary

A.1 Status

V&V Scientist	Beth Sundheim
V&V Date (YYYY-MM-DD)	2006.09.24
V&V Edition	1
V&V Disposition and Status	OK
V&V Charge Time	4.966

A.2 Comments