

V&V Reference Report

L2 ASCDS Version : 7.6.8.1

Observation 3023 - L2 Version 001
Chandra X-Ray Center

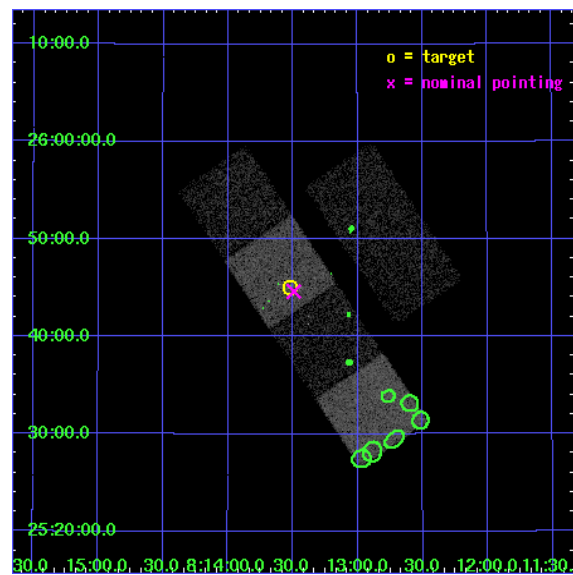
L2 Processing Date : Aug 29 2006

Contents

1	Front	2
2	OBI	3
2.1	OBI	3
2.1.1	Images	3
2.1.2	Bias	3
2.1.3	Parameters	4
2.1.4	Events	4
2.2	Compared Parameters	5
2.3	Aspect	6
2.4	Star Slots	9
2.4.1	Slot 3	9
2.4.2	Slot 4	10
2.4.3	Slot 5	11
2.4.4	Slot 6	12
2.4.5	Slot 7	13
2.5	FID Slots	14
2.5.1	Slot 0	14
2.5.2	Slot 1	15
2.5.3	Slot 2	16
3	Point Sources	17
A	Summary	18
A.1	Status	18
A.2	Comments	18

1 Front

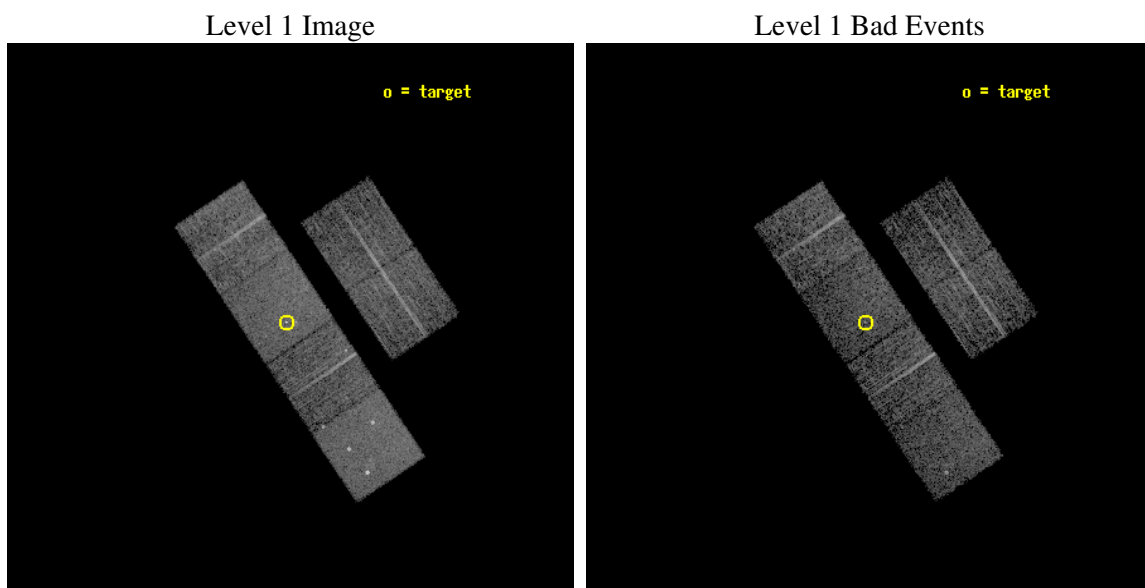
seq_num	700462
obs_id	3023
title	A SYSTEMATIC X-RAY SURVEY OF SUBMILLIMETRE-LUMINOUS QUASARS
observer	Dr Robert Priddey
object	HS0810+2554
dtcycle	0
cycle	P
ra_targ	123.380417
dec_targ	25.750806
ra_nom	123.37300258479
dec_nom	25.743906381037
roll_nom	236.11492413688
revision	2
ontime	4956.8000046164
livetime	4894.0340183313
ontime2	4953.5590542704
ontime3	4956.8000046164
ontime5	4956.8000046164
ontime6	4956.8000046164
ontime7	4956.8000046164
ontime8	4956.8000046164
l2events	47157



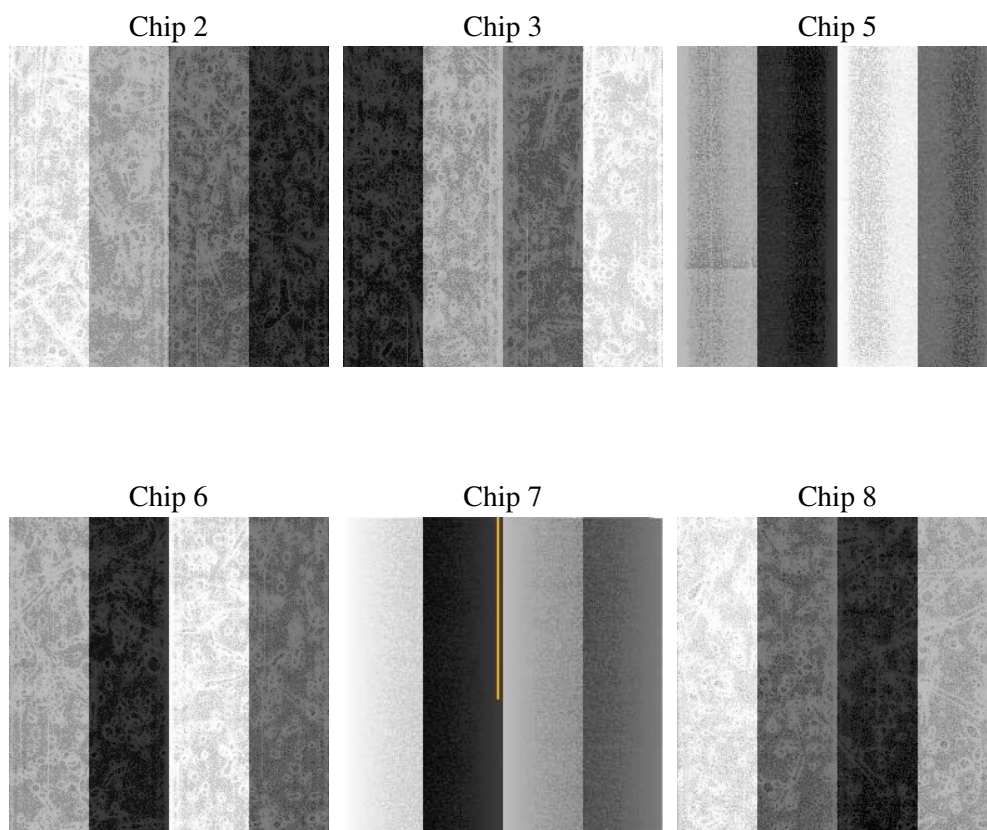
2 OBI

2.1 OBI

2.1.1 Images



2.1.2 Bias



2.1.3 Parameters

obi_num	0
ascdsver	7.6.8.1
caldsver	3.2.3
date	2006-08-29T20:26:15
revision	2

sched_exp_time	5000.000000
ontime	4961.978930071
ontime2	4958.7379597872
ontime3	4965.219920218
ontime5	4961.978930071
ontime6	4961.9789101332
ontime7	4961.978930071
ontime8	4965.219920218
l1events	220098

2.1.4 Events

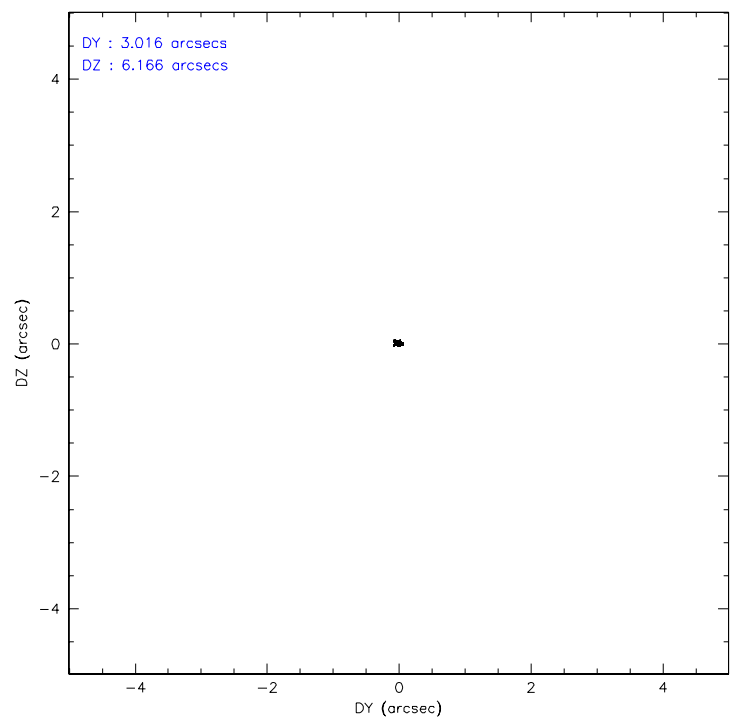
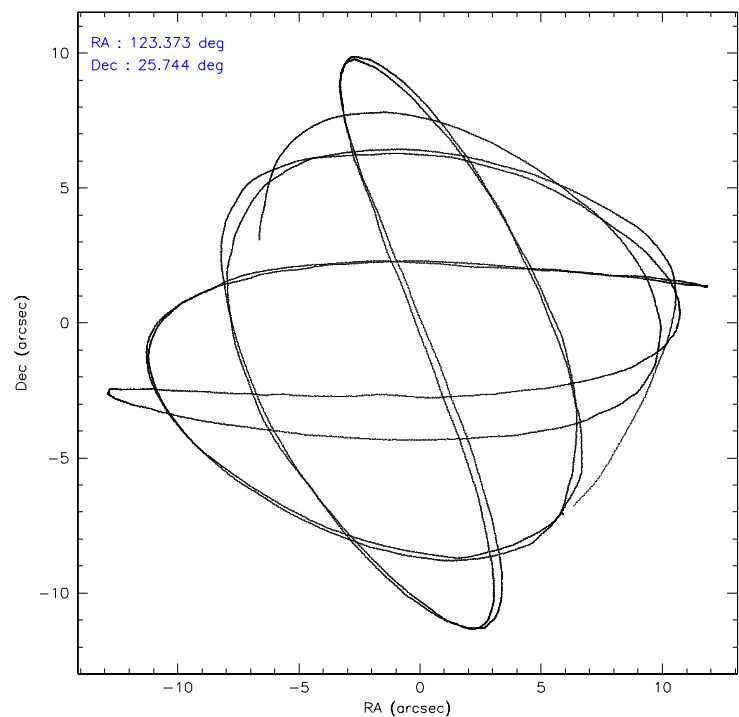
	ccd 2	ccd 3	ccd 5	ccd 6	ccd 7	ccd 8
level 1 events	32894	29001	45576	31704	41194	39729
rejected events	29492	25465	24474	27707	24965	31469
rejected %	89%	87%	53%	87%	60%	79%

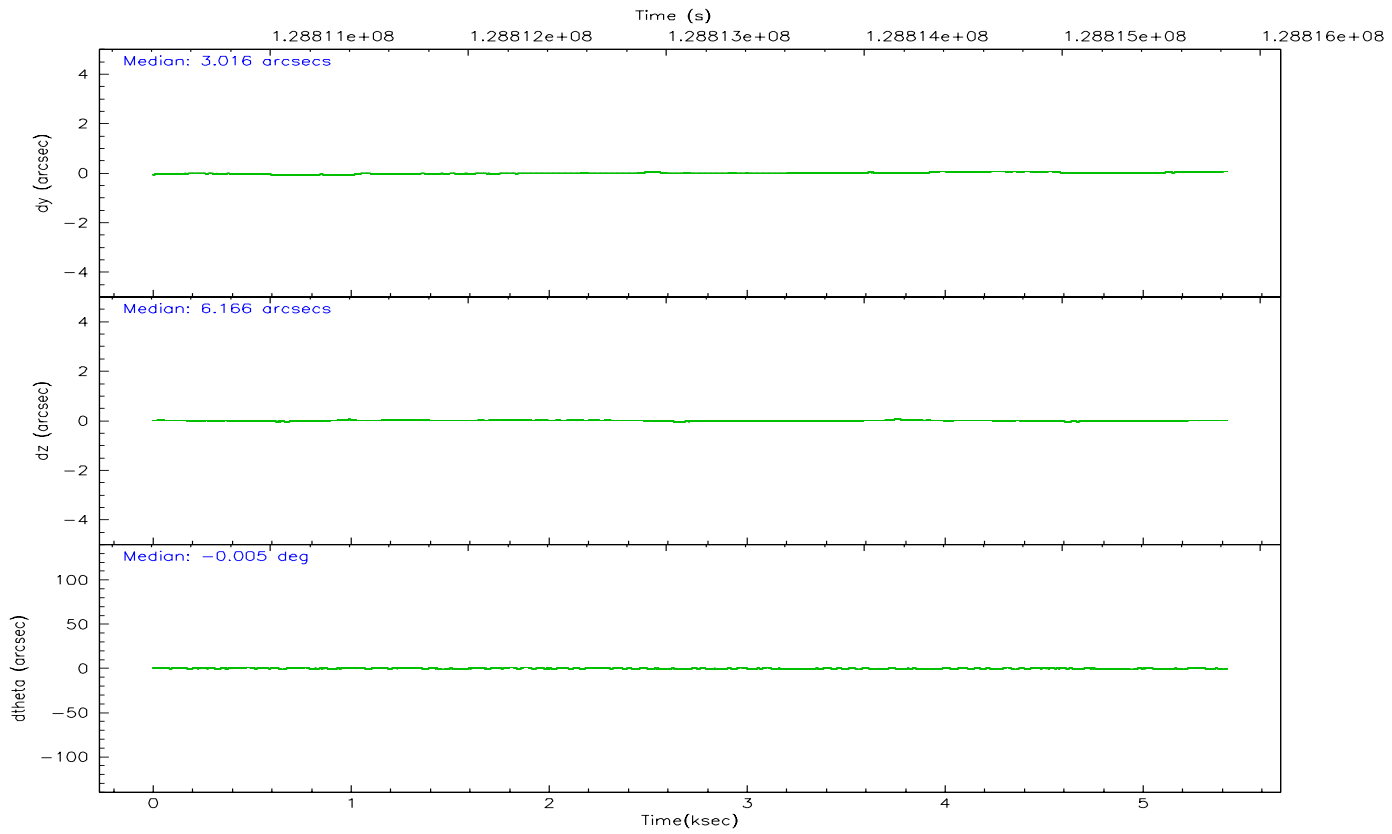
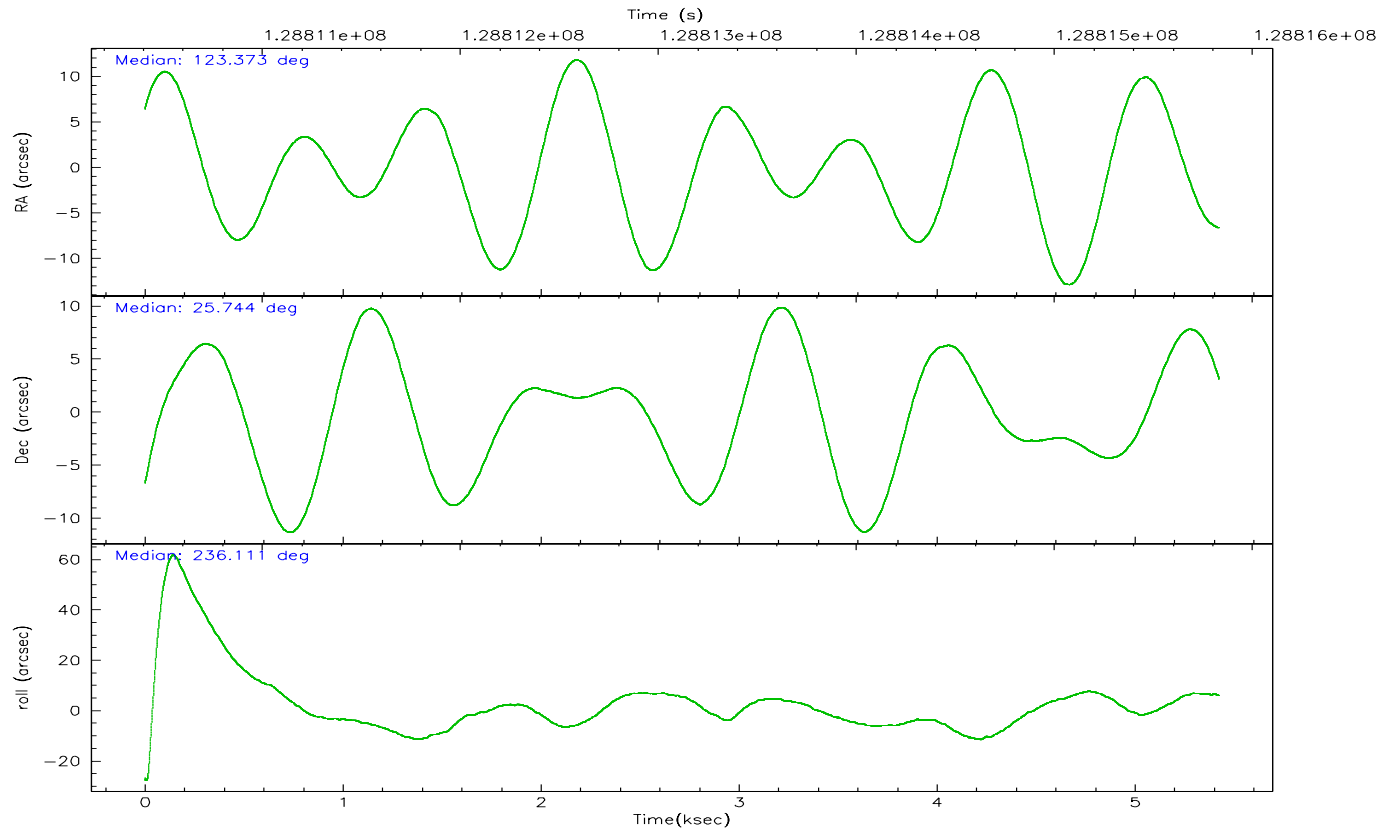
	ccd 2	ccd 3	ccd 5	ccd 6	ccd 7	ccd 8
grade 0 events	1348	1456	2763	1702	1195	2642
	4%	5%	6%	5%	2%	6%
grade 1 events	13	13	150	18	38	17
	0%	0%	0%	0%	0%	0%
grade 2 events	800	753	6505	807	4050	1667
	2%	2%	14%	2%	9%	4%
grade 3 events	295	344	459	383	927	910
	0%	1%	1%	1%	2%	2%
grade 4 events	300	337	421	354	900	873
	0%	1%	0%	1%	2%	2%
grade 5 events	1157	1207	2169	1366	2777	1654
	3%	4%	4%	4%	6%	4%
grade 6 events	664	653	10979	758	9179	2176
	2%	2%	24%	2%	22%	5%
grade 7 events	28317	24238	22130	26316	22128	29790
	86%	83%	48%	83%	53%	74%

2.2 Compared Parameters

Parameter	Planned	Actual	Parameter	Planned	Actual
Instrument	ACIS	ACIS	Obspar format version number	6	6
Detector	ACIS-235678	ACIS-235678	Obspar file type	PREDICTED	ACTUAL
Grating	NONE	NONE	Obspar update status	NONE	UPDATED
Data mode	FAINT	FAINT	On-chip summing requested	N	N
Observation mode	POINTING	POINTING	Subarray requested	NONE	NONE
Pointing RA	123.374597	123.3730025847871	Alternating exposures requested	N	N
Pointing Dec	25.771042	25.74390638103743	Primary exposure time	0.000000	3.2
Pointing Roll	235.957828	236.1149241368829			
SIM focus pos (mm)	-0.684267	-0.6828225247311905			
SIM defocus (mm)	0	0.001444936568705701			
SIM translation stage pos (mm)	-190.132523	-190.1425803651734			
SIM translation stage offset (mm)	0	0.01005778216563158			
Observation start time	128810832.184000	128809750.22812			
Observation start date	2002-01-30T20:46:08	2002-01-30T20:29:10			
Observation end time	128815832.184000	128817390.57843			
Observation end date	2002-01-30T22:09:28	2002-01-30T22:36:30			
Read mode	TIMED	TIMED			

2.3 Aspect



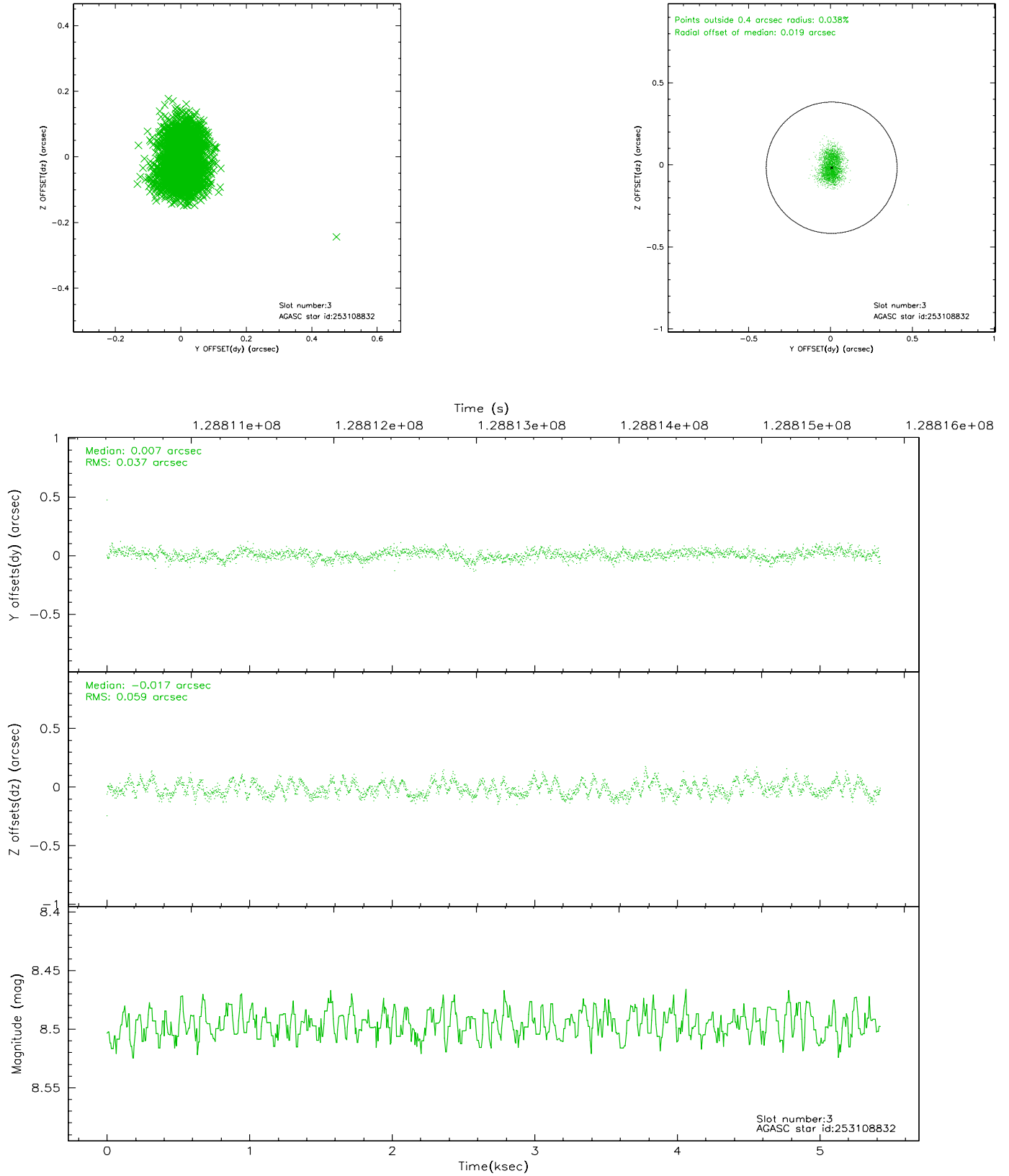


Slot Statistics

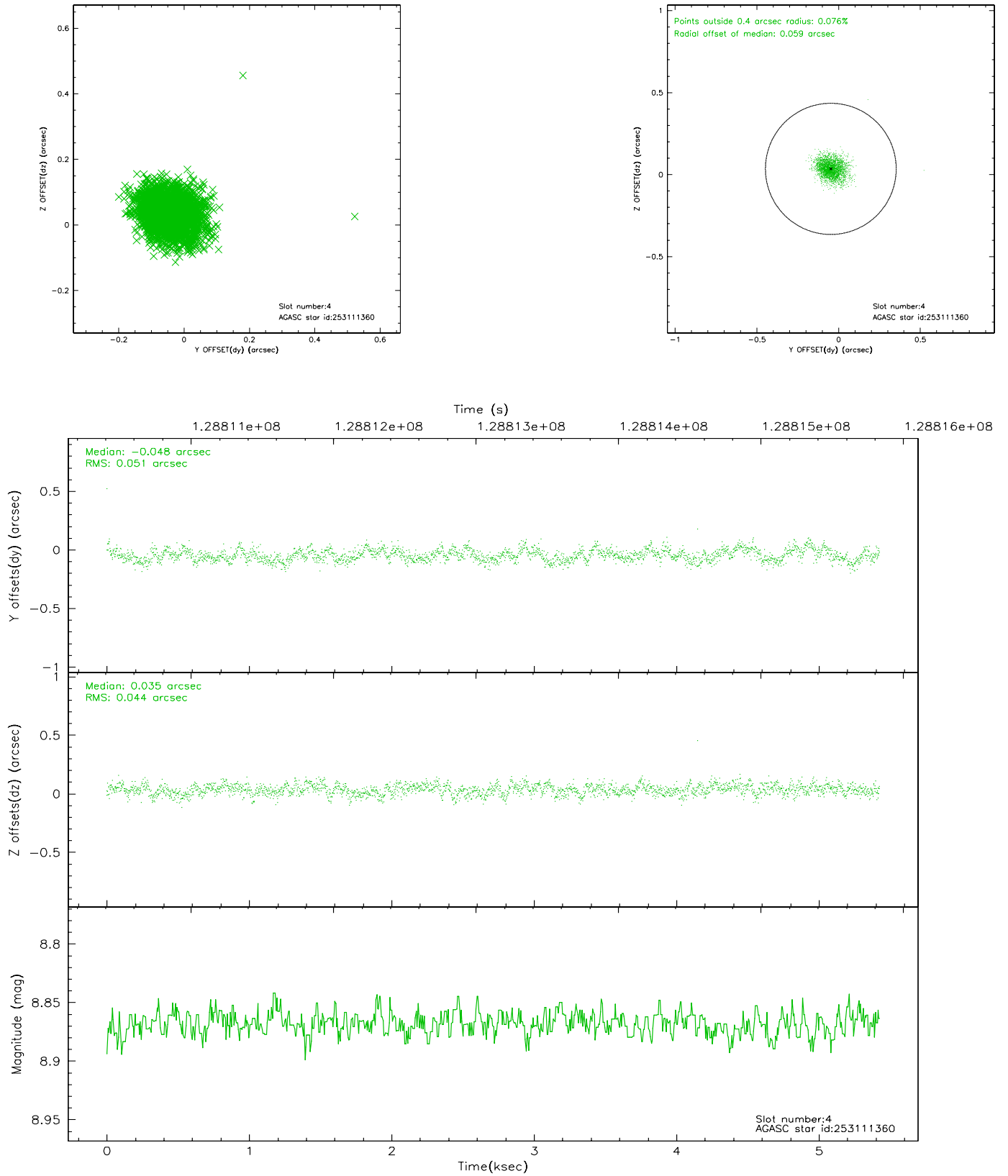
slot	status	id	mag	n_pts	med_dy	med_dz	dr1	dr2	ra	dec	mean_y	mean_z
0	FID	ACIS-S-2	7.12	1324	-0.022	0.031	0.007	0.012	0.000000	0.000000	-755.64	-1727.25
1	FID	ACIS-S-4	7.20	1323	-0.058	0.003	0.005	0.009	0.000000	0.000000	2157.06	180.12
2	FID	ACIS-S-5	7.24	1323	0.050	-0.024	0.006	0.011	0.000000	0.000000	-1807.02	174.95
3	GUIDE	253108832	8.50	2647	0.007	-0.017	0.074	0.116	123.164616	26.224196	-970.66	-1475.45
4	GUIDE	253111360	8.87	2647	-0.048	0.035	0.070	0.115	122.832350	25.779138	958.45	-1475.31
5	GUIDE	253112512	9.01	2646	-0.031	-0.023	0.071	0.122	123.268510	25.314512	1557.28	633.48
6	GUIDE	253630552	9.92	2644	0.061	0.037	0.120	0.194	123.423030	26.402115	-1967.34	-1142.17
7	GUIDE	253110424	10.00	2646	0.019	-0.035	0.150	0.242	123.142073	26.069493	-468.70	-1225.33

2.4 Star Slots

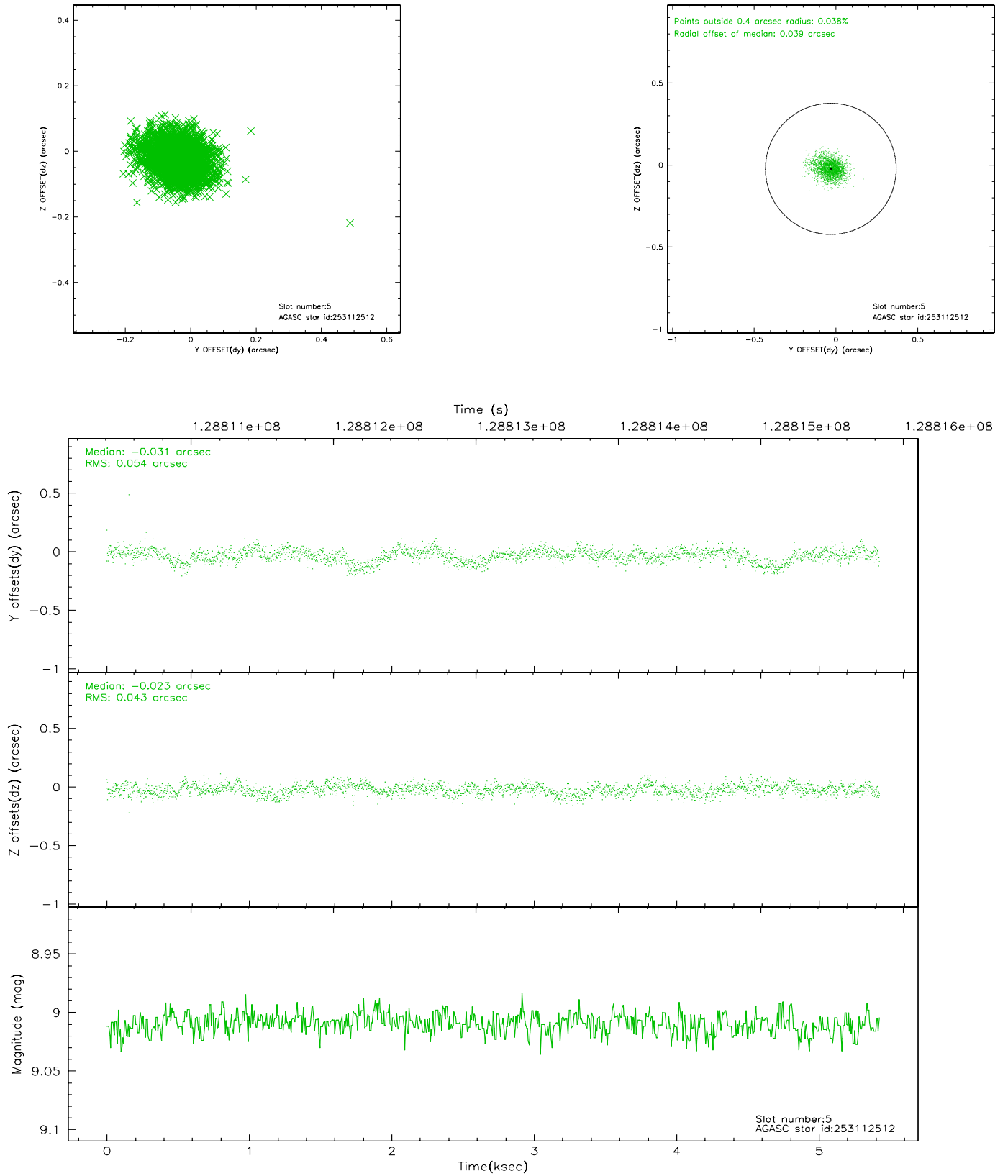
2.4.1 Slot 3



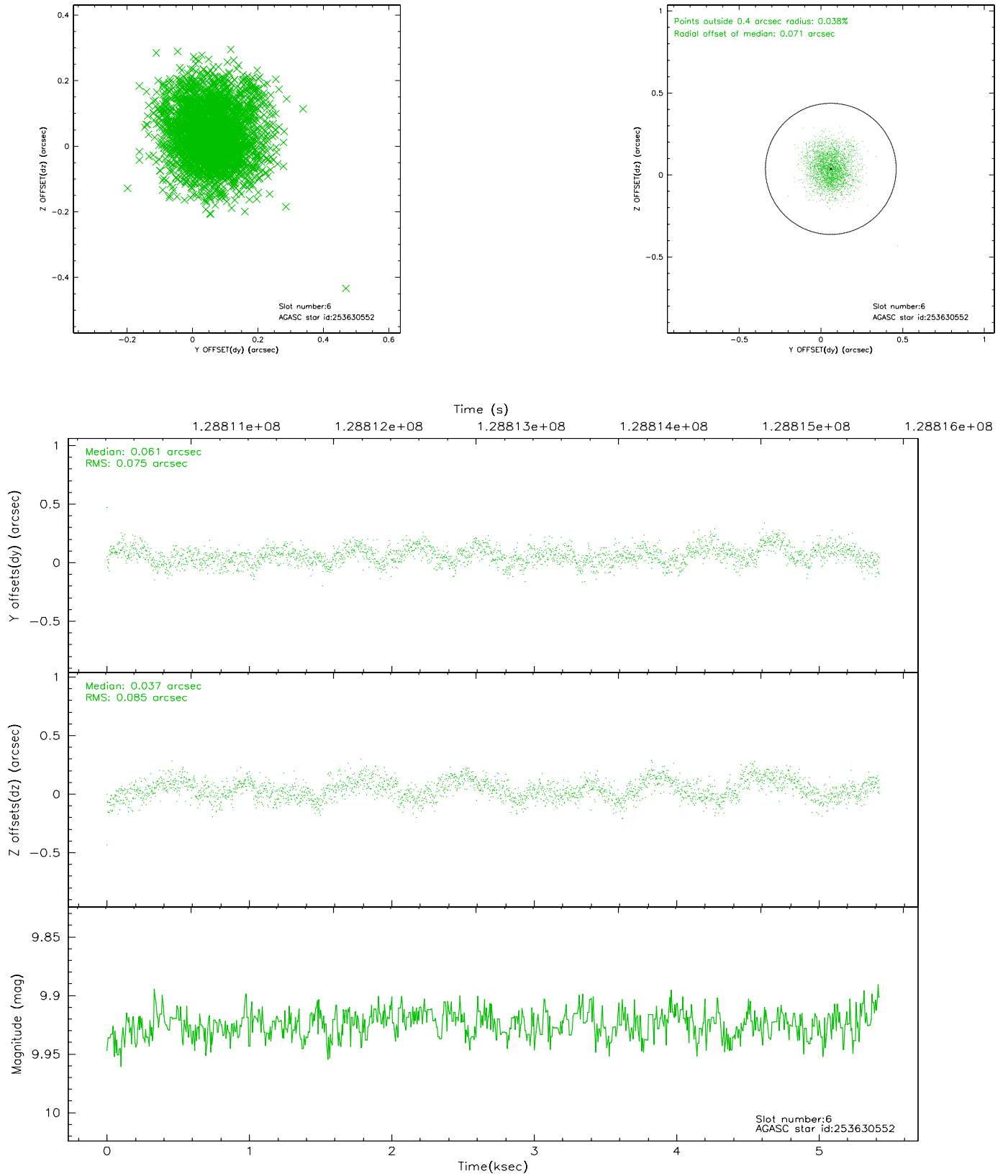
2.4.2 Slot 4



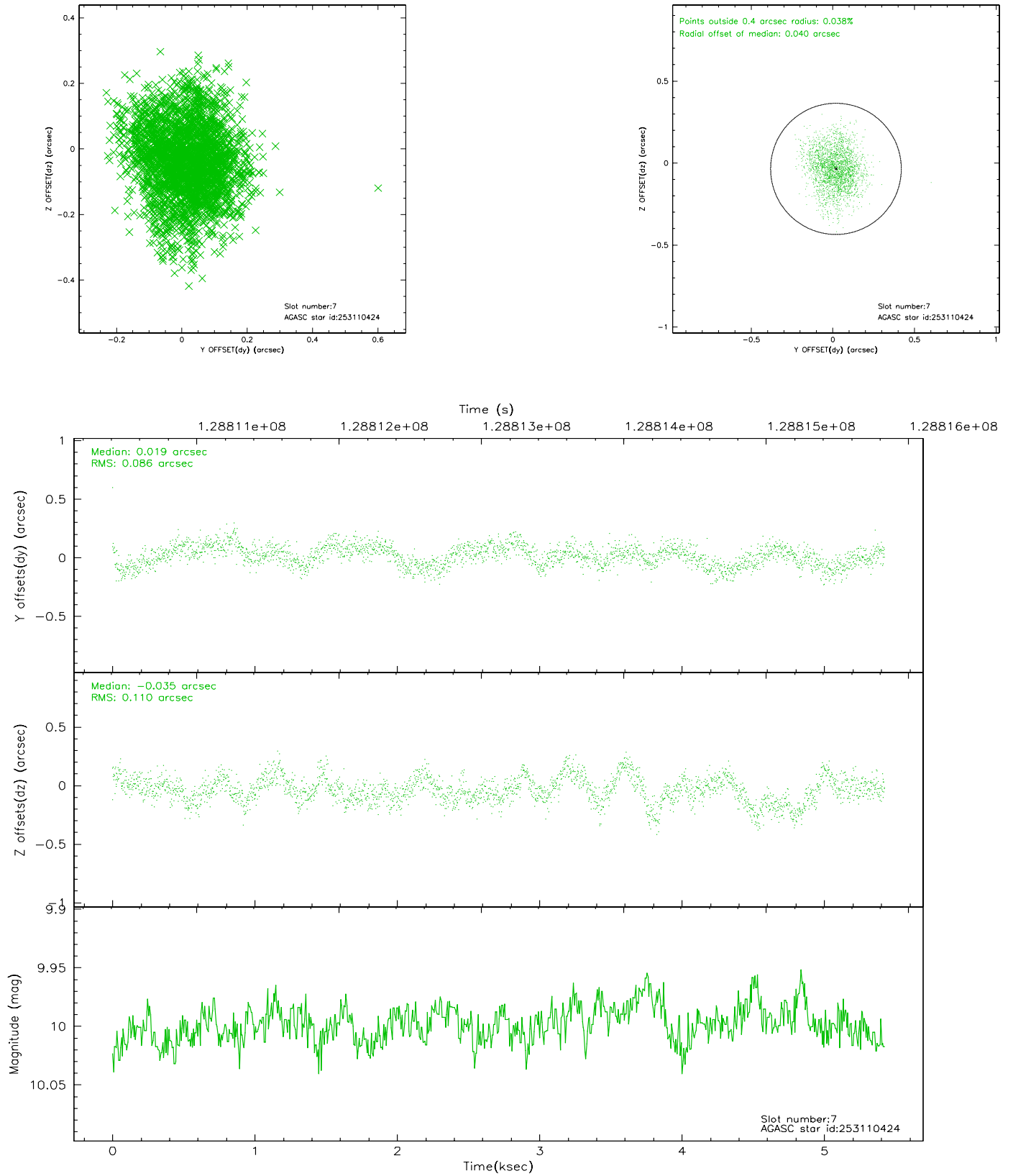
2.4.3 Slot 5



2.4.4 Slot 6

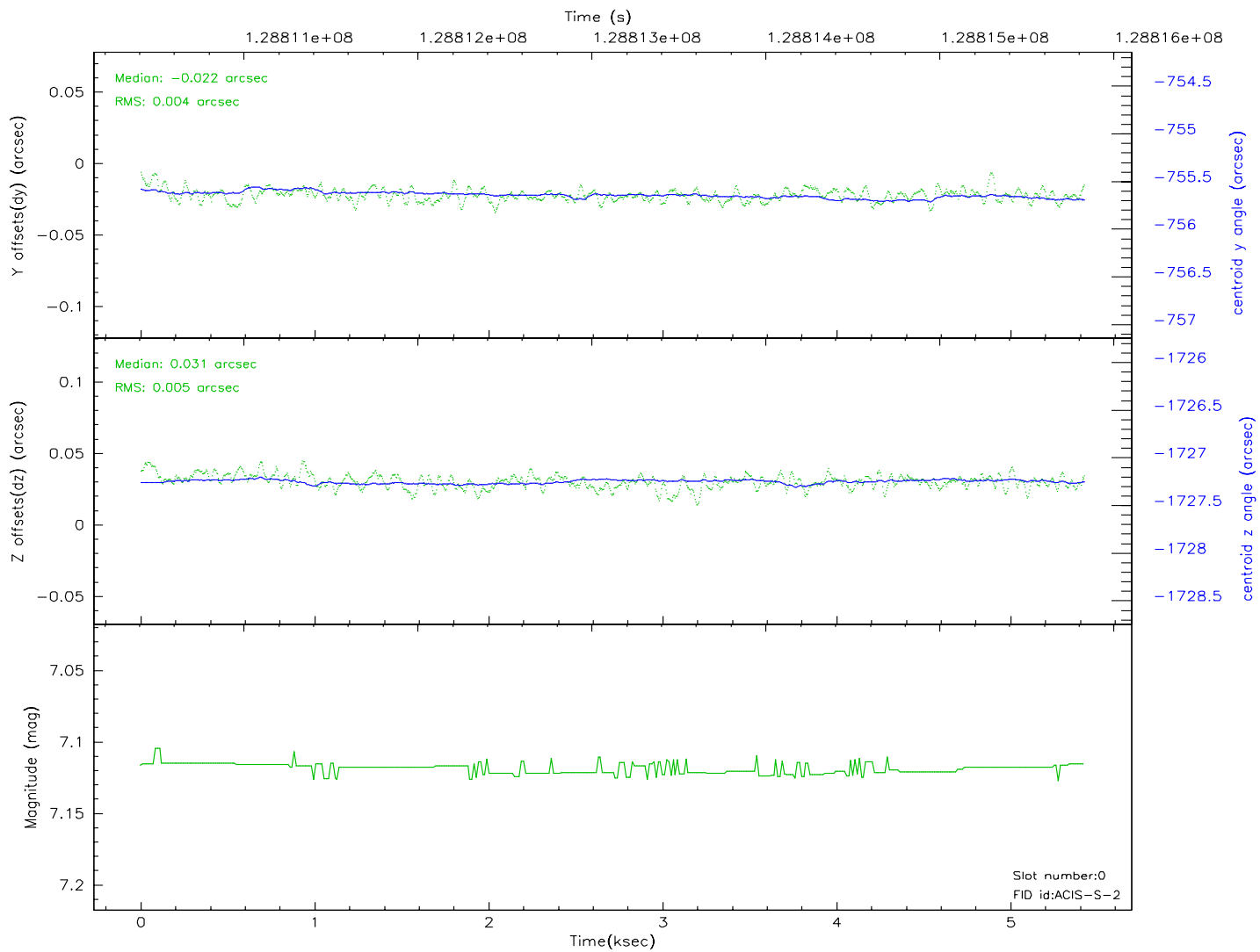
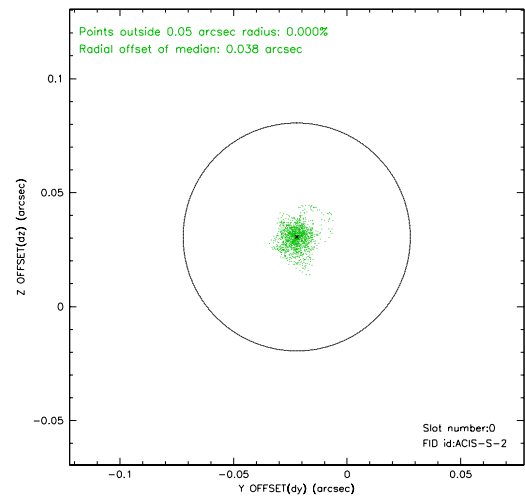
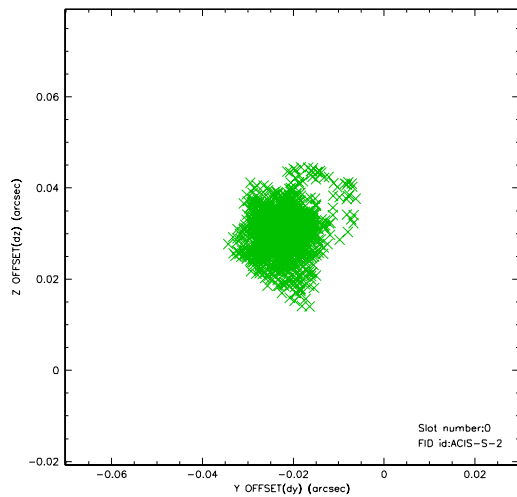


2.4.5 Slot 7

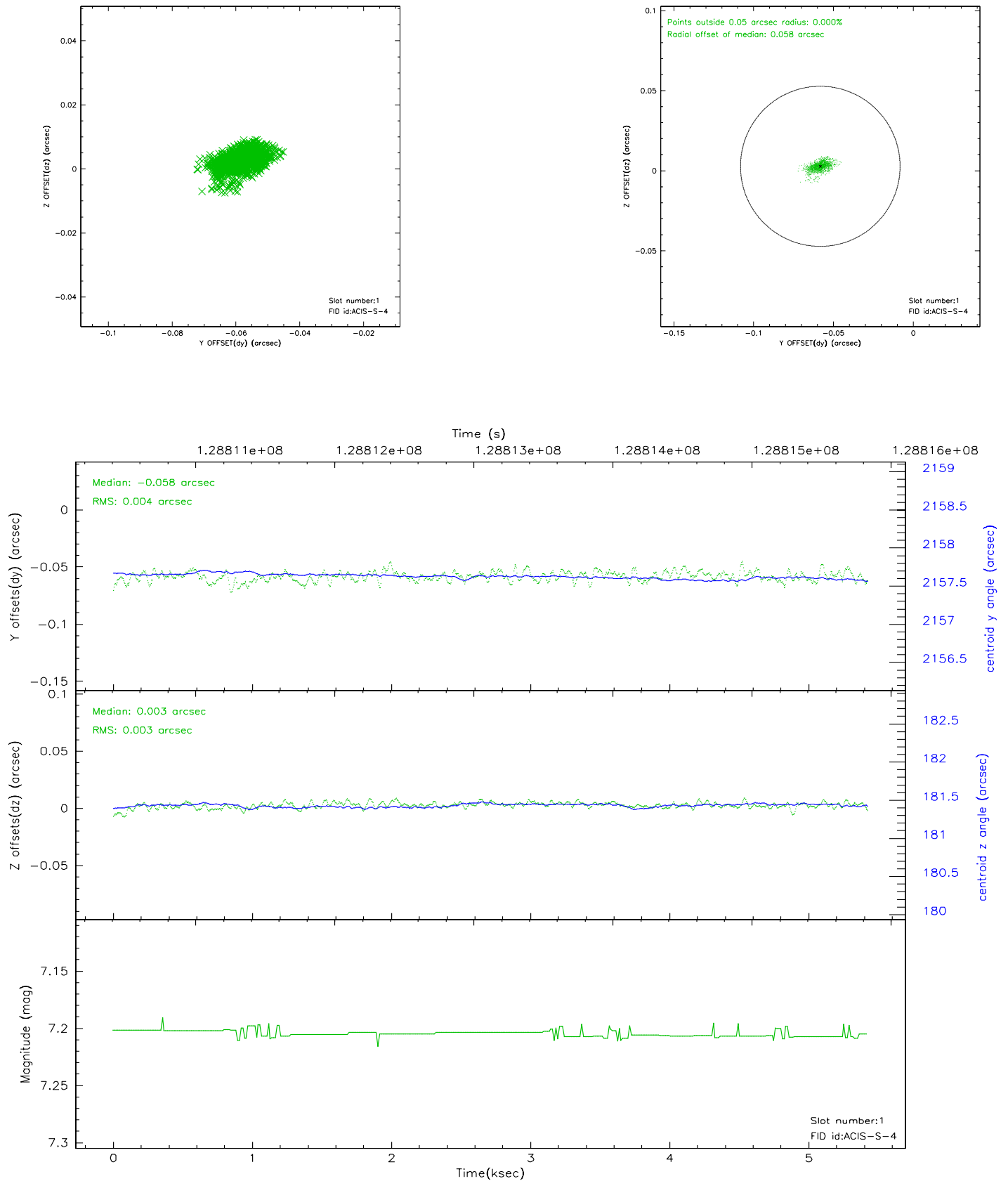


2.5 FID Slots

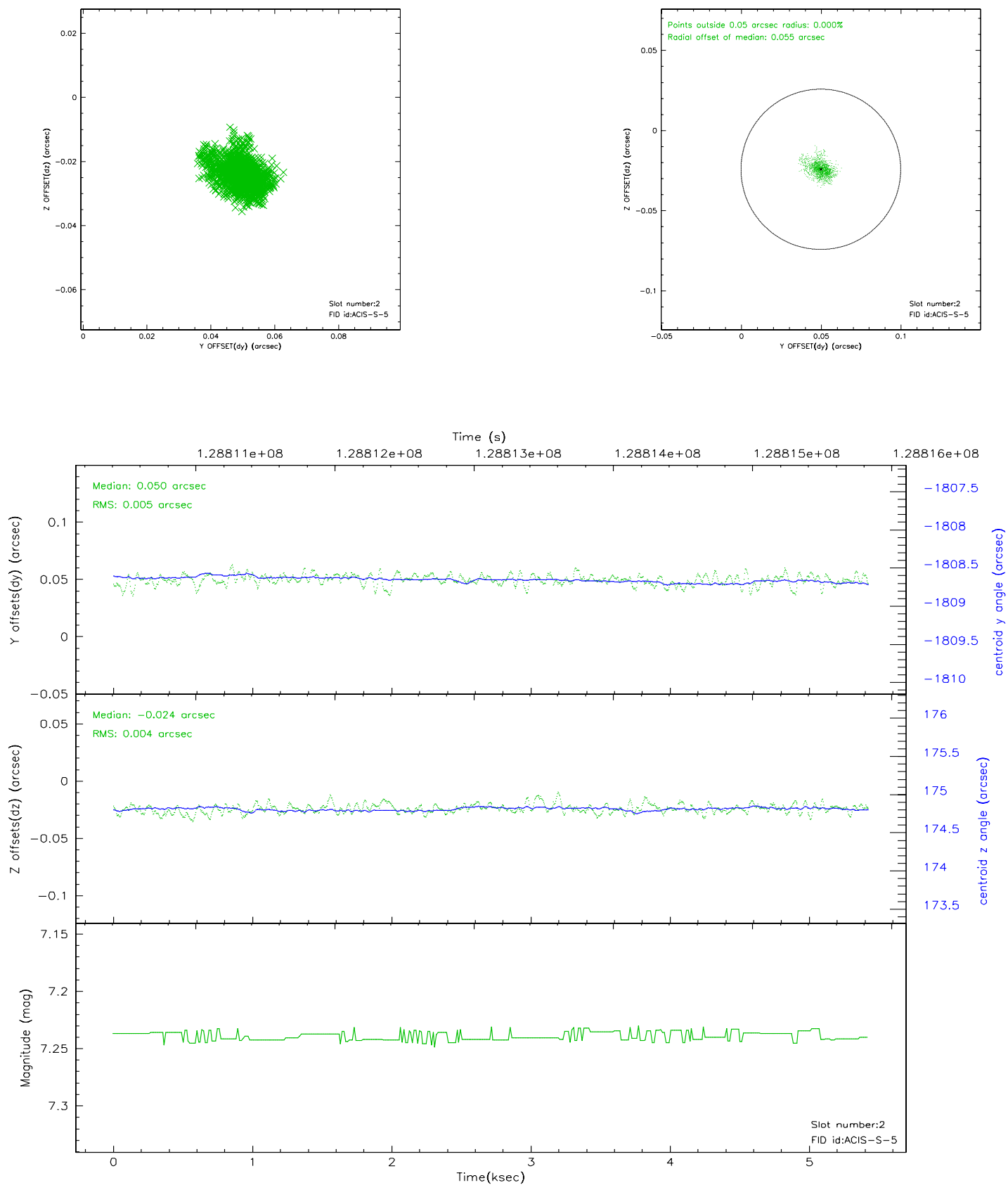
2.5.1 Slot 0



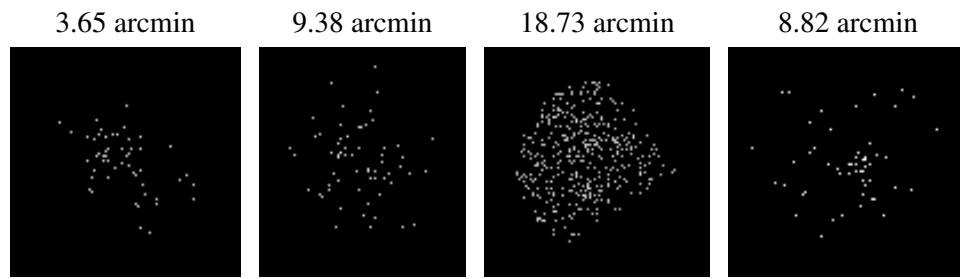
2.5.2 Slot 1



2.5.3 Slot 2



3 Point Sources



A Summary

A.1 Status

V&V Scientist	Jen Lauer
V&V Date (YYYY-MM-DD)	2006.08.30
V&V Edition	1
V&V Disposition and Status	OK
V&V Charge Time	4.96

A.2 Comments