

V&V Reference Report

L2 ASCDS Version : 8.4.5

Observation 3007 - L2 Version 3
Chandra X-Ray Center

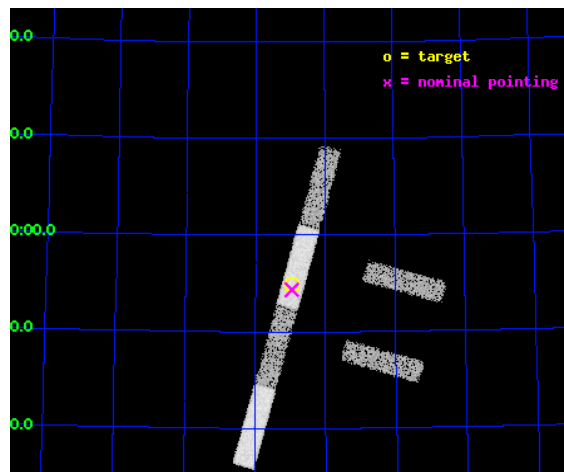
L2 Processing Date : Oct 14 2012

Contents

1	Front	2
2	OBI	3
2.1	OBI	3
2.1.1	Images	3
2.1.2	Bias	3
2.1.3	Parameters	4
2.1.4	Events	4
2.2	Compared Parameters	5
2.3	Aspect	6
2.4	Star Slots	9
2.4.1	Slot 3	9
2.4.2	Slot 4	10
2.4.3	Slot 5	11
2.4.4	Slot 6	12
2.4.5	Slot 7	13
2.5	FID Slots	14
2.5.1	Slot 0	14
2.5.2	Slot 1	15
2.5.3	Slot 2	16
A	Summary	17
A.1	Status	17
A.2	Comments	17

1 Front

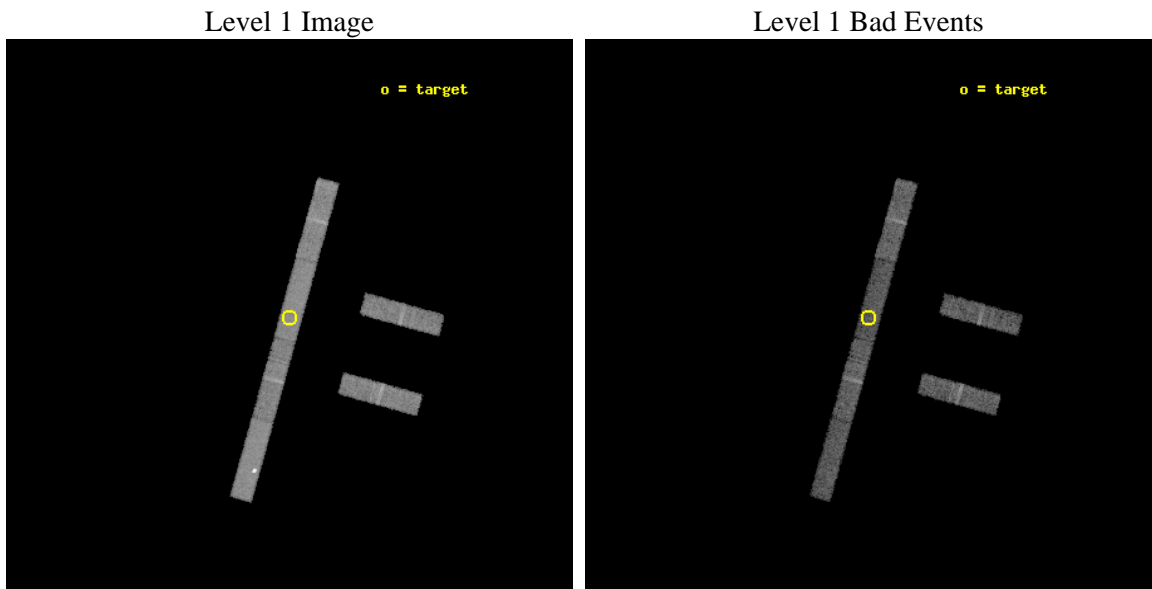
seq_num	700446	Sequence number
obs_id	3007	Observation id
title	CHANDRA SNAPSHOT OBSERVATIONS OF SOFT X-RAY TRANSIENT AGN	Proposal
observer	Dr Rick Edelson	Principal investigator
object	RX J1624+75	Source name
dtcycle	0	
cycle	P	events from which exps? Prim/Second/Both
ra_targ	246.235417	Observer's specified target RA [deg]
dec_targ	75.915556	Observer's specified target Dec [deg]
ra_nom	246.23930841115	Nominal RA [deg]
dec_nom	75.905878080137	Nominal Dec [deg]
roll_nom	285.53733063719	Nominal Roll [deg]
revision	3	Processing version of data
ontime	10462.09994328	Sum of GTIs [s]
livetime	10085.807629538	Livetime [s]
ontime2	10462.09994328	Sum of GTIs [s]
ontime3	10462.09994328	Sum of GTIs [s]
ontime5	10462.09994328	Sum of GTIs [s]
ontime6	10462.09994328	Sum of GTIs [s]
ontime7	10462.09994328	Sum of GTIs [s]
ontime8	10462.09994328	Sum of GTIs [s]
l2events	33780	Number of level 2 events



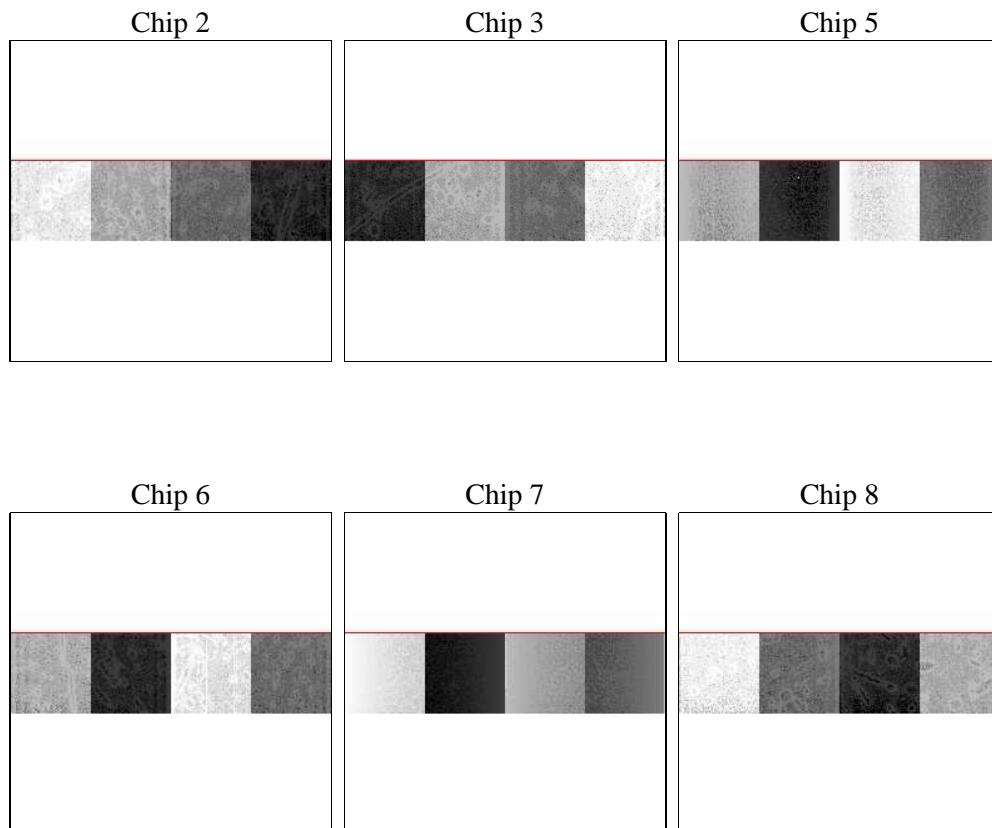
2 OBI

2.1 OBI

2.1.1 Images



2.1.2 Bias



2.1.3 Parameters

obi_num	1	Obi number	sched_exp_time	10000.000000	[s] Scheduled observation exposure time
ascdsver	8.4.5	Processing system revision	ontime	10462.09994328	Sum of GTIs [s]
caldsver	4.5.2	 	ontime2	10462.09994328	Sum of GTIs [s]
date	2012-10-14T18:01:01	Date and time of file creation	ontime3	10462.09994328	Sum of GTIs [s]
revision	3	Processing version of data	ontime5	10462.09994328	Sum of GTIs [s]
			ontime6	10462.09994328	Sum of GTIs [s]
			ontime7	10462.09994328	Sum of GTIs [s]
			ontime8	10462.09994328	Sum of GTIs [s]
			l1events	151158	Number of level 1 events

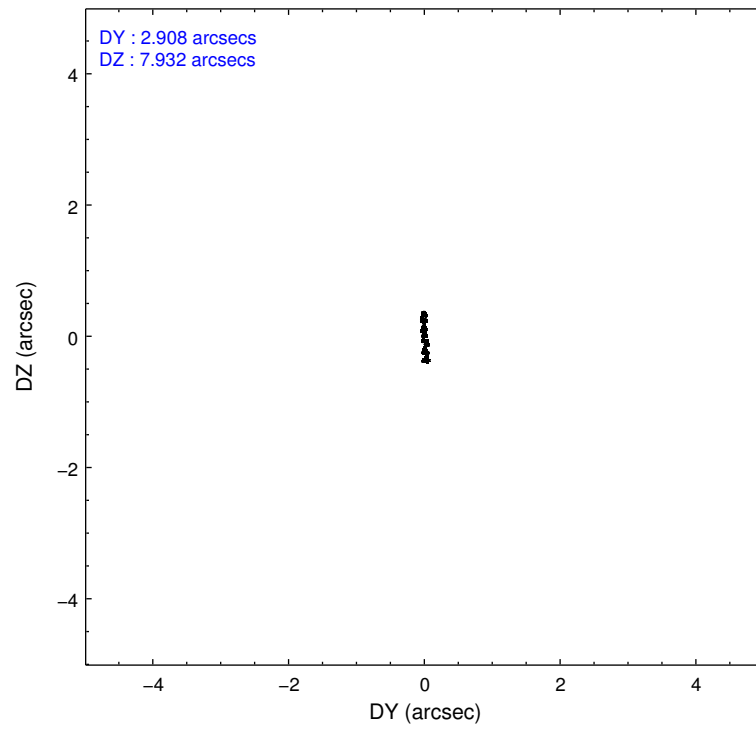
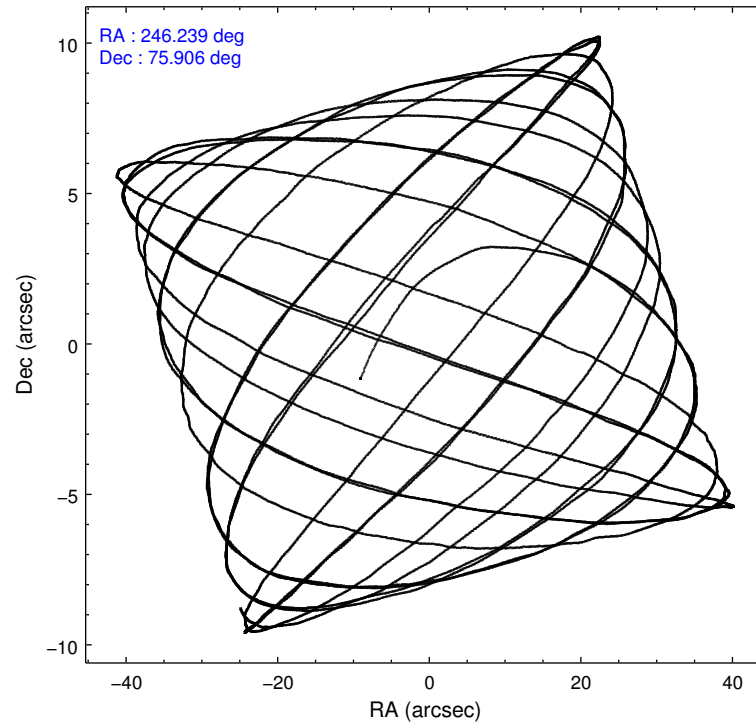
2.1.4 Events

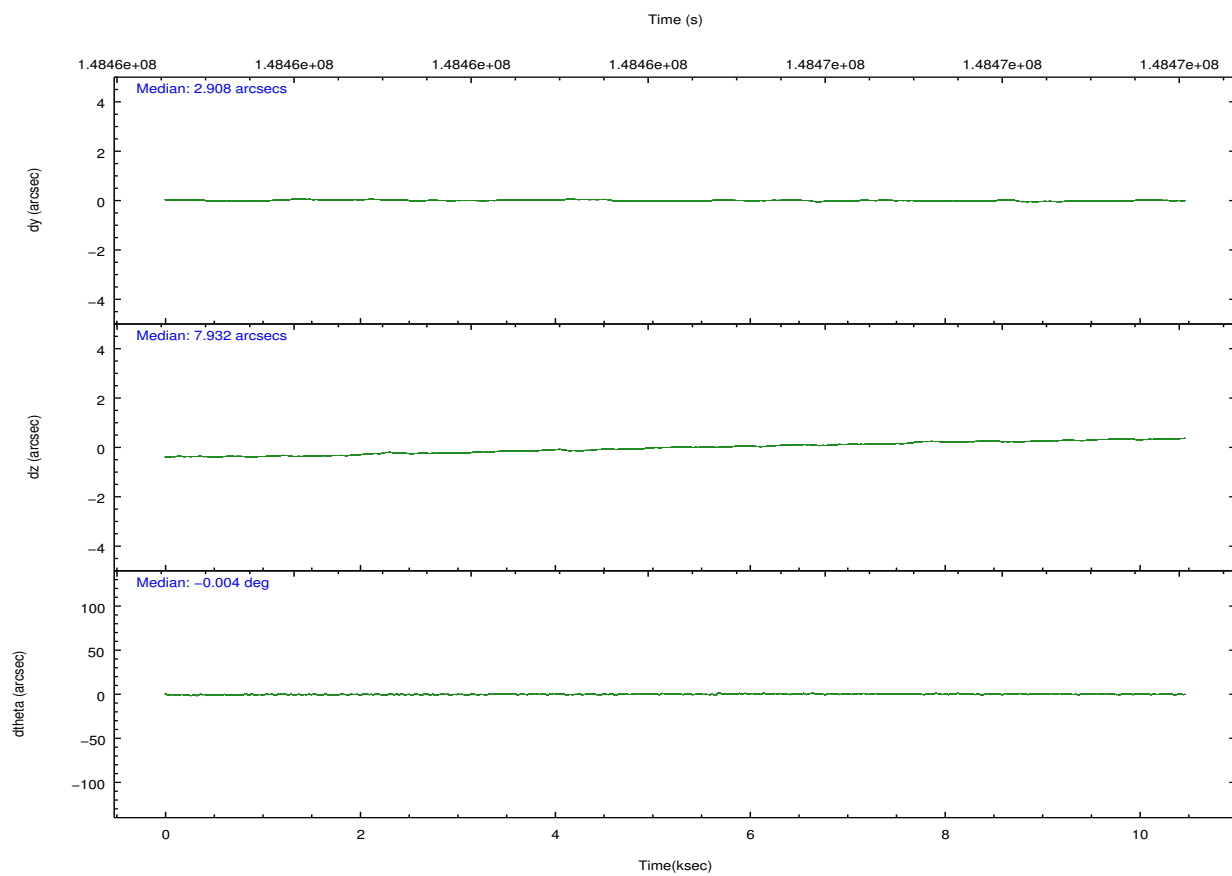
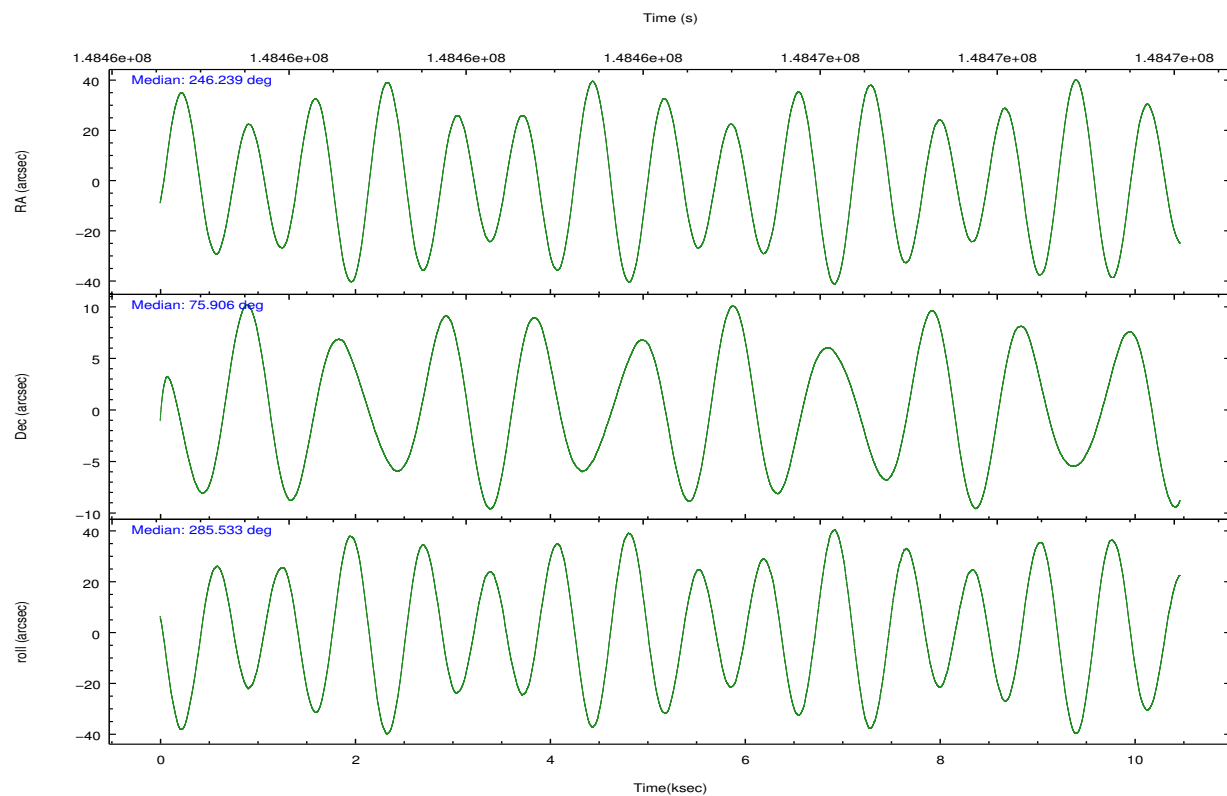
	ccd 2	ccd 3	ccd 5	ccd 6	ccd 7	ccd 8		ccd 2	ccd 3	ccd 5	ccd 6	ccd 7	ccd 8
level 1 events	21831	19852	34849	21318	25864	27444	grade 0 events	1143	1005	8846	1074	1327	1684
rejected events	19246	17467	13860	18821	13454	22368		5%	5%	25%	5%	5%	6%
rejected %	88%	87%	39%	88%	52%	81%	grade 1 events	4	10	22	9	26	4
								0%	0%	0%	0%	0%	0%
							grade 2 events	444	343	3918	427	2539	911
								2%	1%	11%	2%	9%	3%
							grade 3 events	327	334	872	310	1229	597
								1%	1%	2%	1%	4%	2%
							grade 4 events	349	339	853	311	1266	547
								1%	1%	2%	1%	4%	1%
							grade 5 events	677	710	2082	811	2215	985
								3%	3%	5%	3%	8%	3%
							grade 6 events	340	382	6663	398	6127	1368
								1%	1%	19%	1%	23%	4%
							grade 7 events	18547	16729	11593	17978	11135	21348
								84%	84%	33%	84%	43%	77%

2.2 Compared Parameters

Parameter	Planned	Actual	Parameter	Planned	Actual
Instrument	ACIS	ACIS	Obspar format version number	7	7
Detector	ACIS-235678	ACIS-235678	Obspar file type	PREDICTED	ACTUAL
Grating	NONE	NONE	Obspar update status	NONE	UPDATED
Data mode	FAINT	FAINT	Number of optional ACIS chips dropped	0	0
Observation mode	POINTING	POINTING	On-chip summing requested	N	N
[deg] Pointing RA	246.158216	246.2393084111508	Subarray requested	CUSTOM	1/4
[deg] Pointing Dec	75.924733	75.90587808013703	Subarray start row	385	385
[deg] Pointing Roll	285.459361	285.5373306371895	Subarray row count	256	256
[mm] SIM focus pos	-0.684267	-0.6828225247311905	Alternating exposures requested	N	N
[mm] SIM defocus	0	0.001444936568705701	[s] Primary exposure time	0.000000	1.1
[mm] SIM translation stage pos	-190.132523	-190.1400660498719			
[mm] SIM translation stage offset	0	0.00754346686406393			
[s] Observation start time (MET)	148459532.184000	148458432.15526			
Observation start date	2002-09-15T06:44:28	2002-09-15T06:27:12			
[s] Observation end time (MET)	148469532.184000	148469914.71823			
Observation end date	2002-09-15T09:31:08	2002-09-15T09:38:34			
Read mode	TIMED	TIMED			

2.3 Aspect



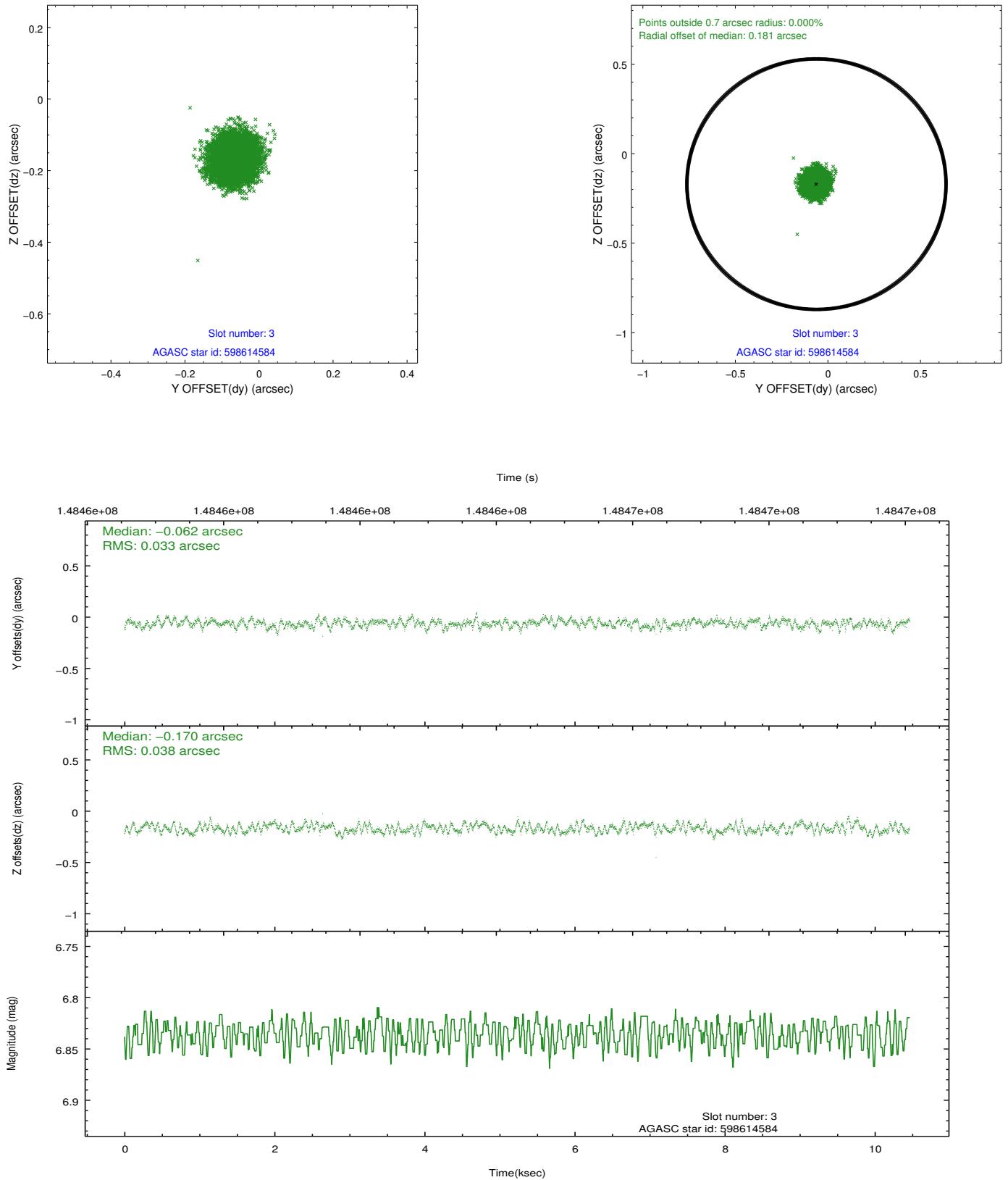


Slot Statistics

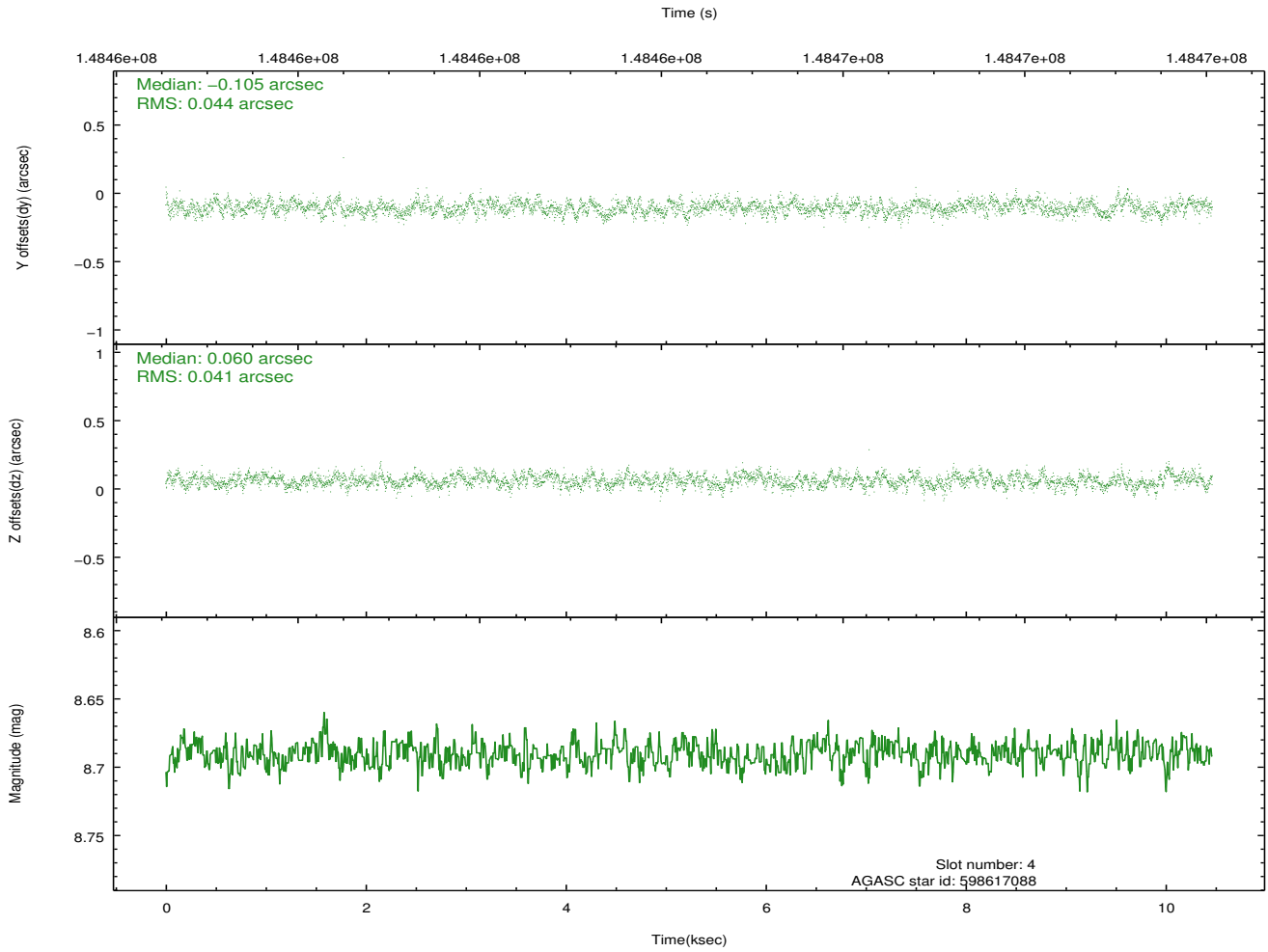
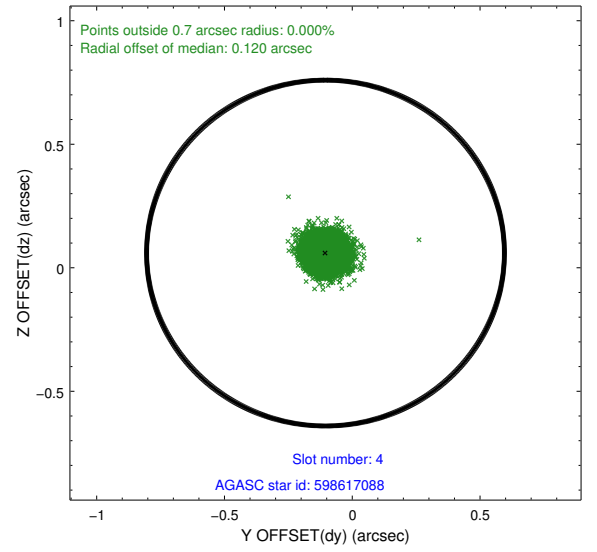
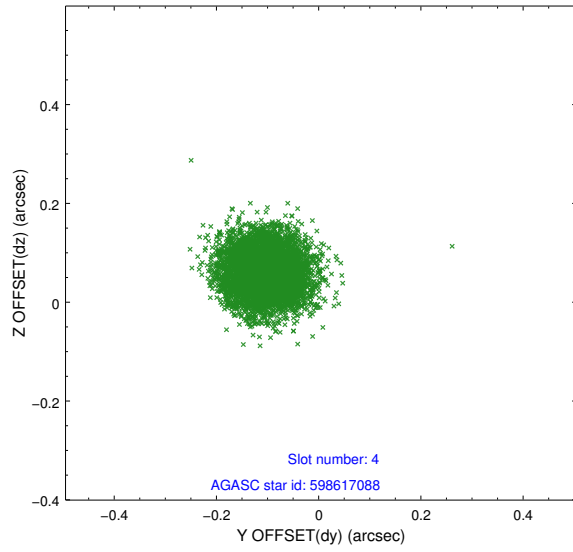
slot	status	id	mag	n_pts	med_dy	med_dz	dr1	dr2	ra	dec	mean_y	mean_z
0	FID	ACIS-S-2	7.11	2553	-0.011	-0.003	0.008	0.014	0.000000	0.000000	-755.57	-1729.10
1	FID	ACIS-S-4	7.20	2553	-0.009	0.006	0.007	0.013	0.000000	0.000000	2157.49	178.86
2	FID	ACIS-S-5	7.24	2553	-0.012	0.006	0.007	0.012	0.000000	0.000000	-1807.76	173.13
3	GUIDE	598614584	6.84	5106	-0.062	-0.170	0.054	0.083	245.641823	76.445057	-1923.73	80.02
4	GUIDE	598617088	8.69	5105	-0.105	0.060	0.064	0.101	246.049116	75.330763	2033.59	-665.10
5	GUIDE	598616120	9.07	5105	0.049	0.037	0.075	0.122	245.093666	75.466702	1324.81	-1363.60
6	GUIDE	598613600	9.07	5104	0.017	0.182	0.069	0.111	245.230860	76.446961	-2026.76	-251.09
7	GUIDE	598612240	9.38	5104	0.102	-0.112	0.087	0.141	248.020860	76.176023	-470.01	1792.17

2.4 Star Slots

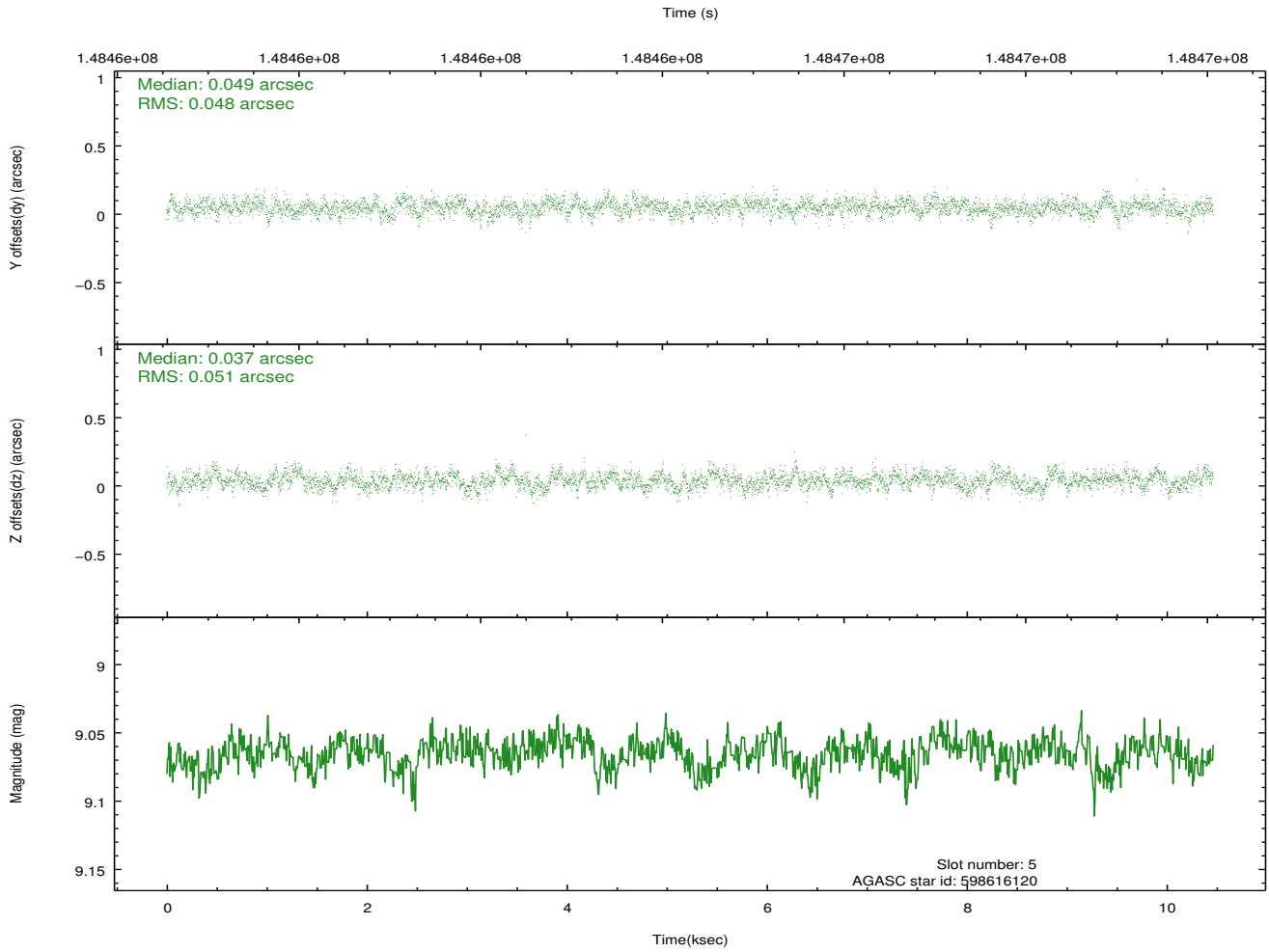
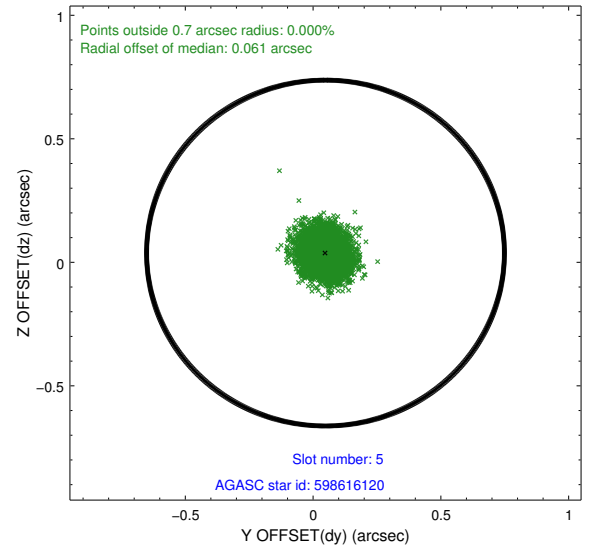
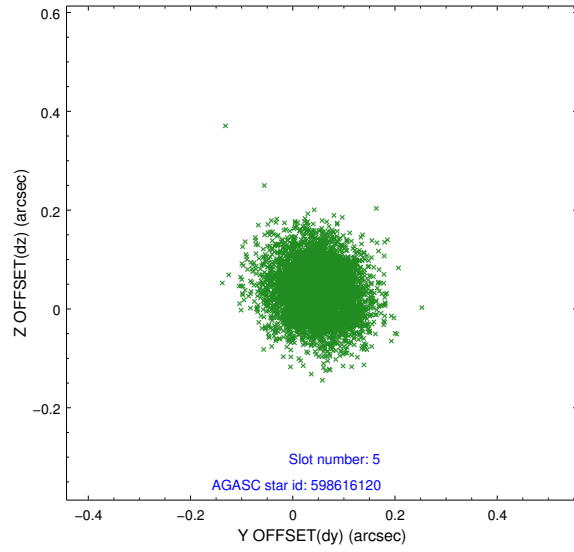
2.4.1 Slot 3



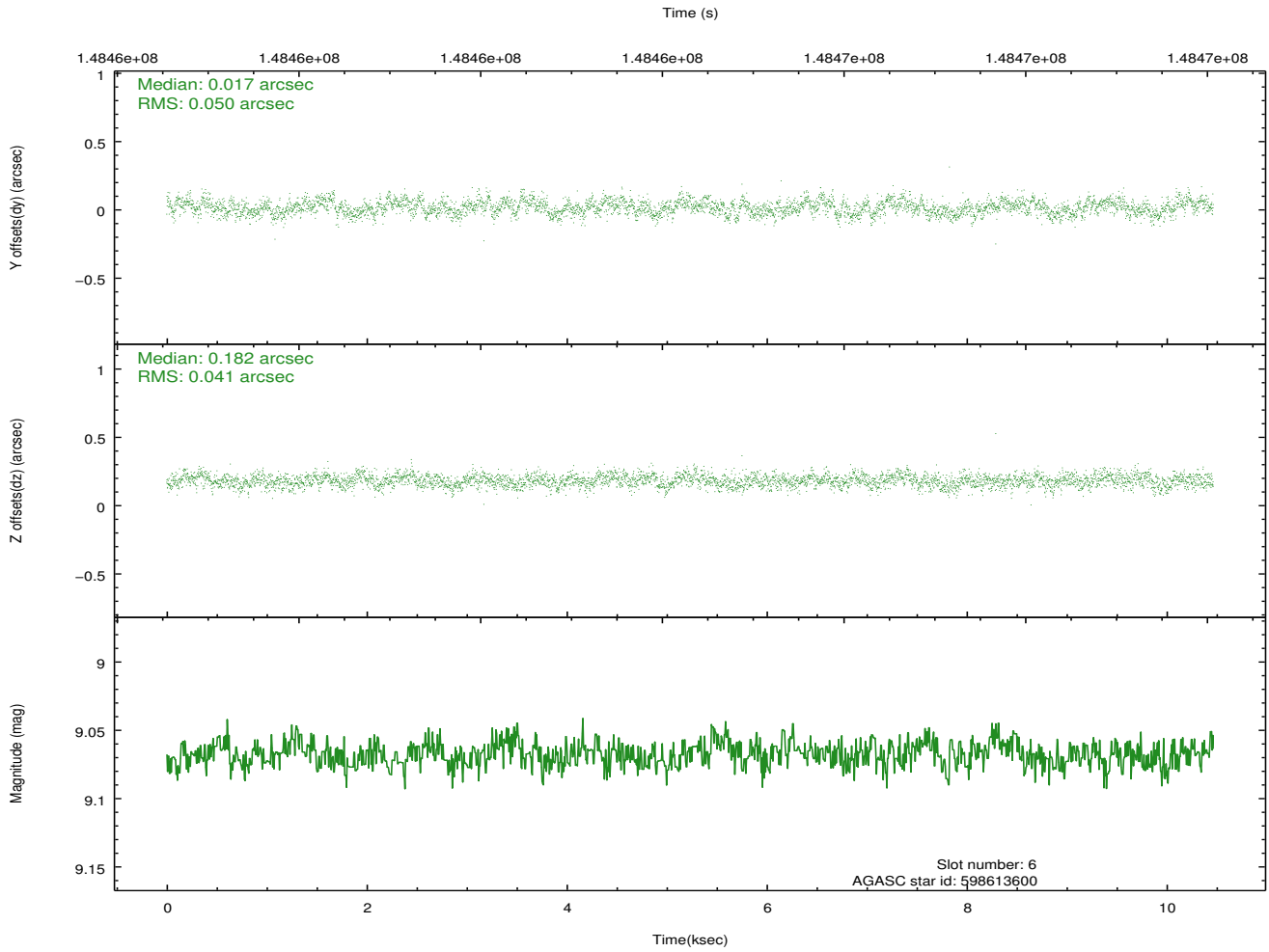
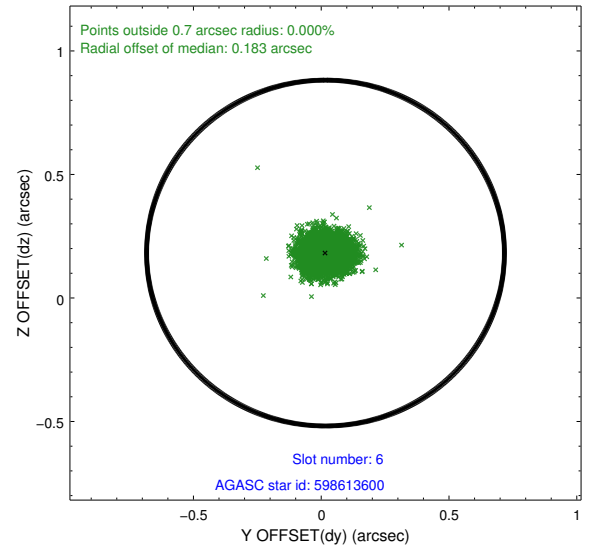
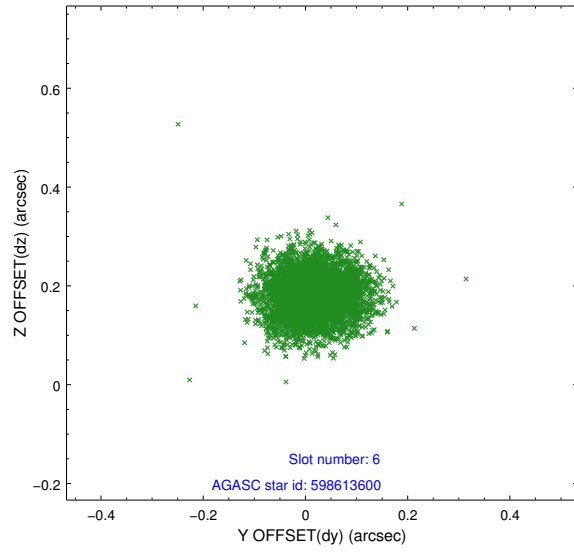
2.4.2 Slot 4



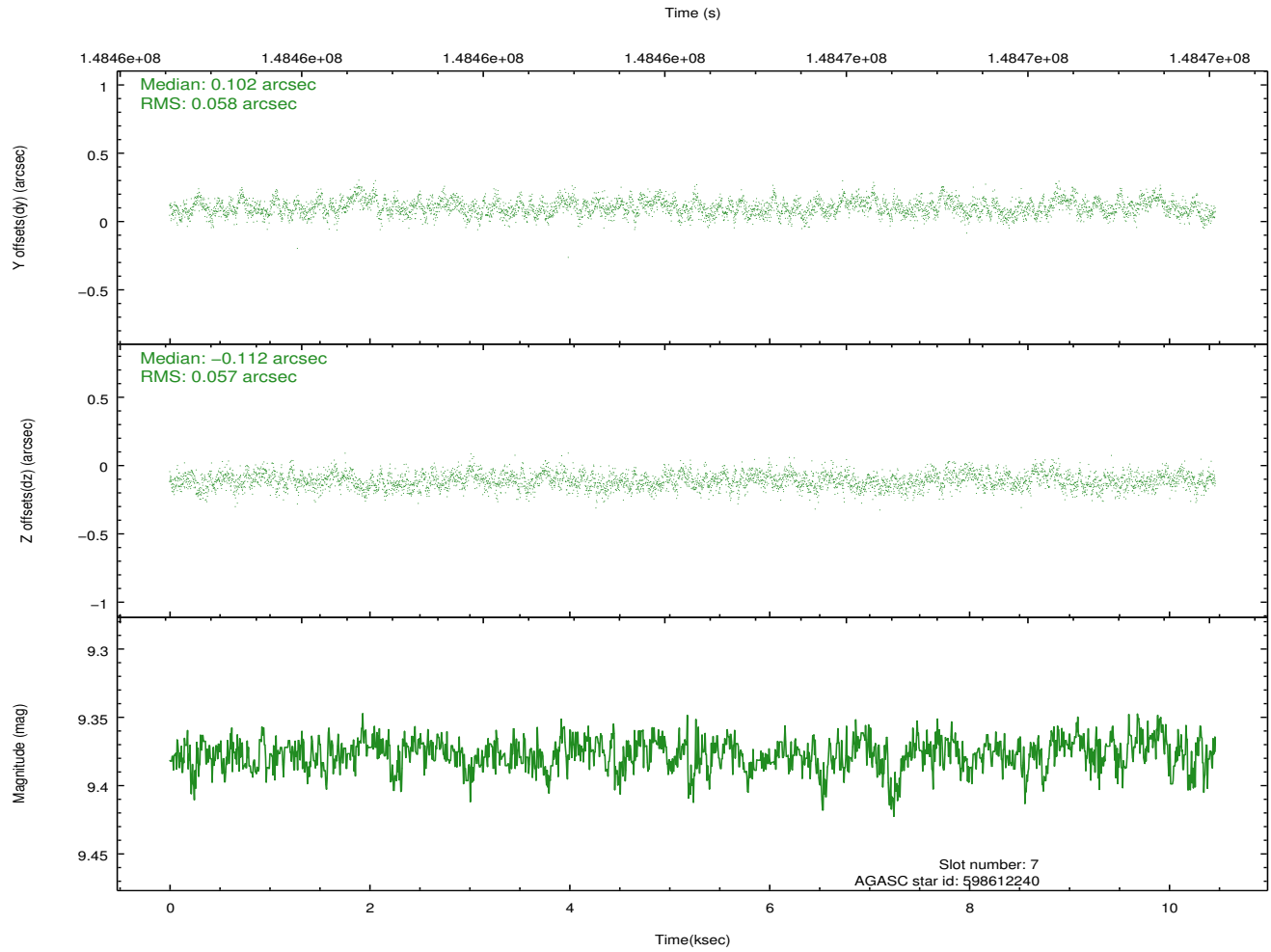
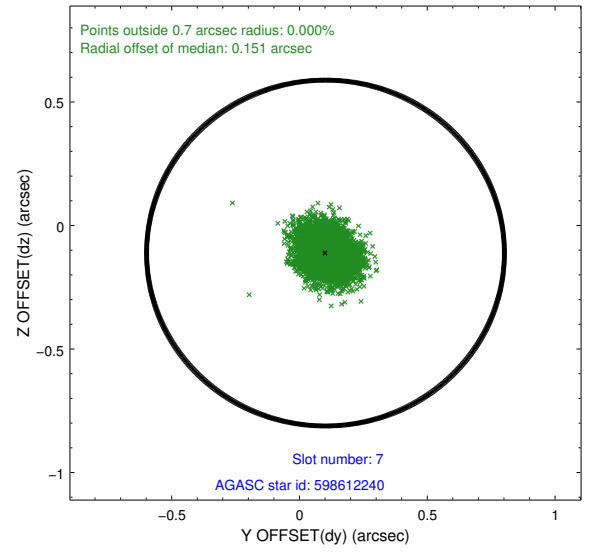
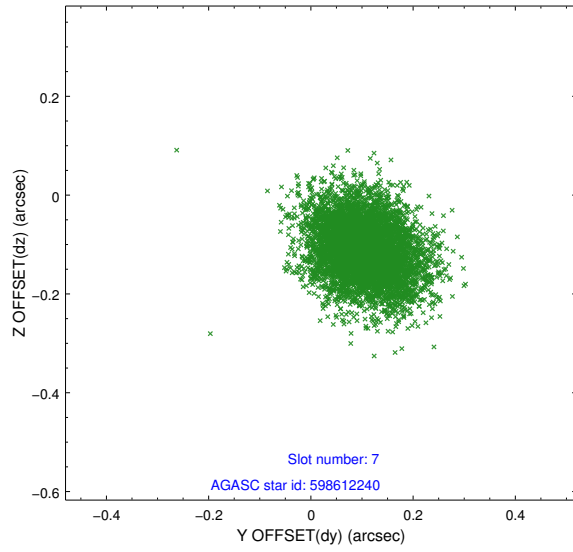
2.4.3 Slot 5



2.4.4 Slot 6

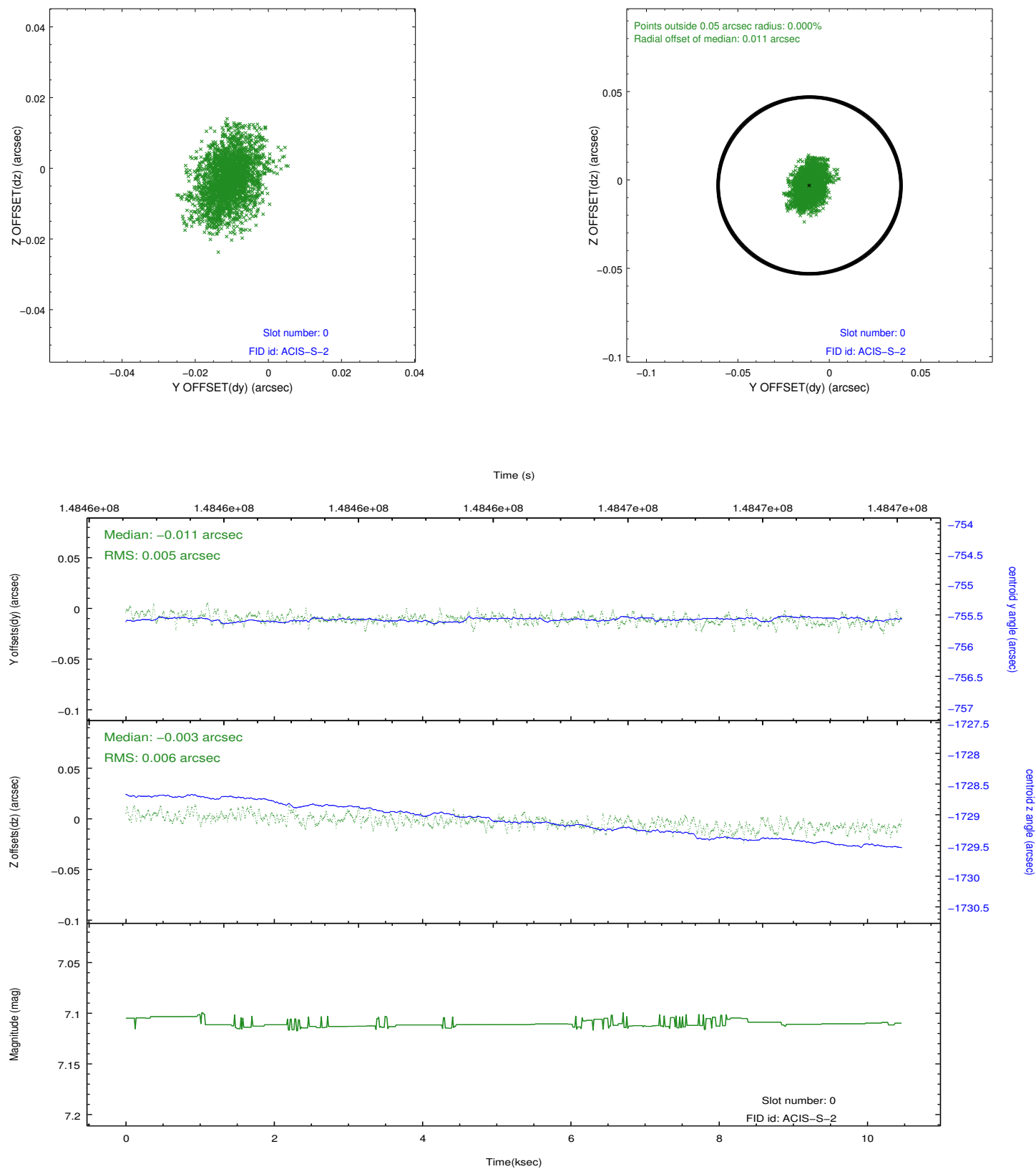


2.4.5 Slot 7

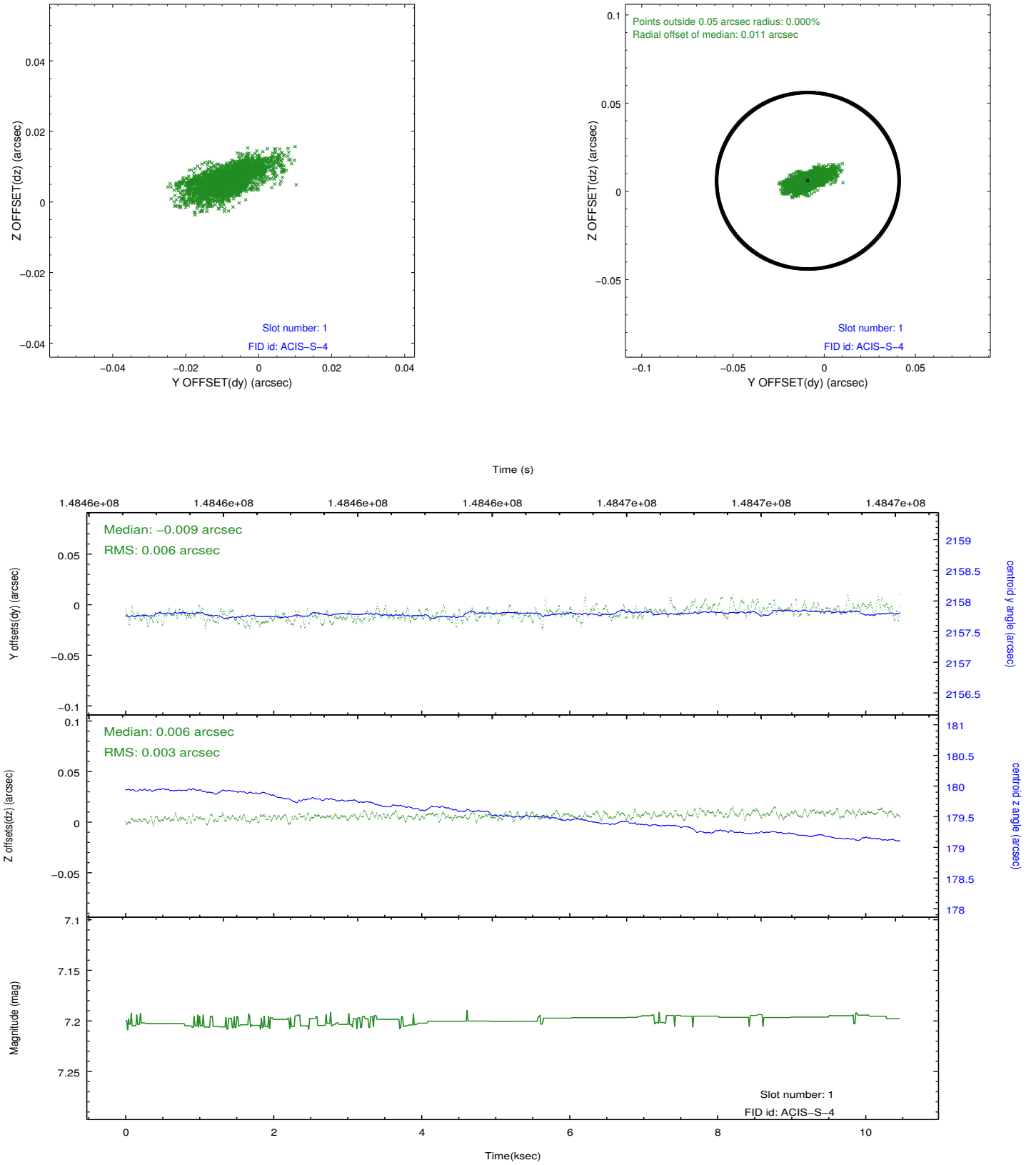


2.5 FID Slots

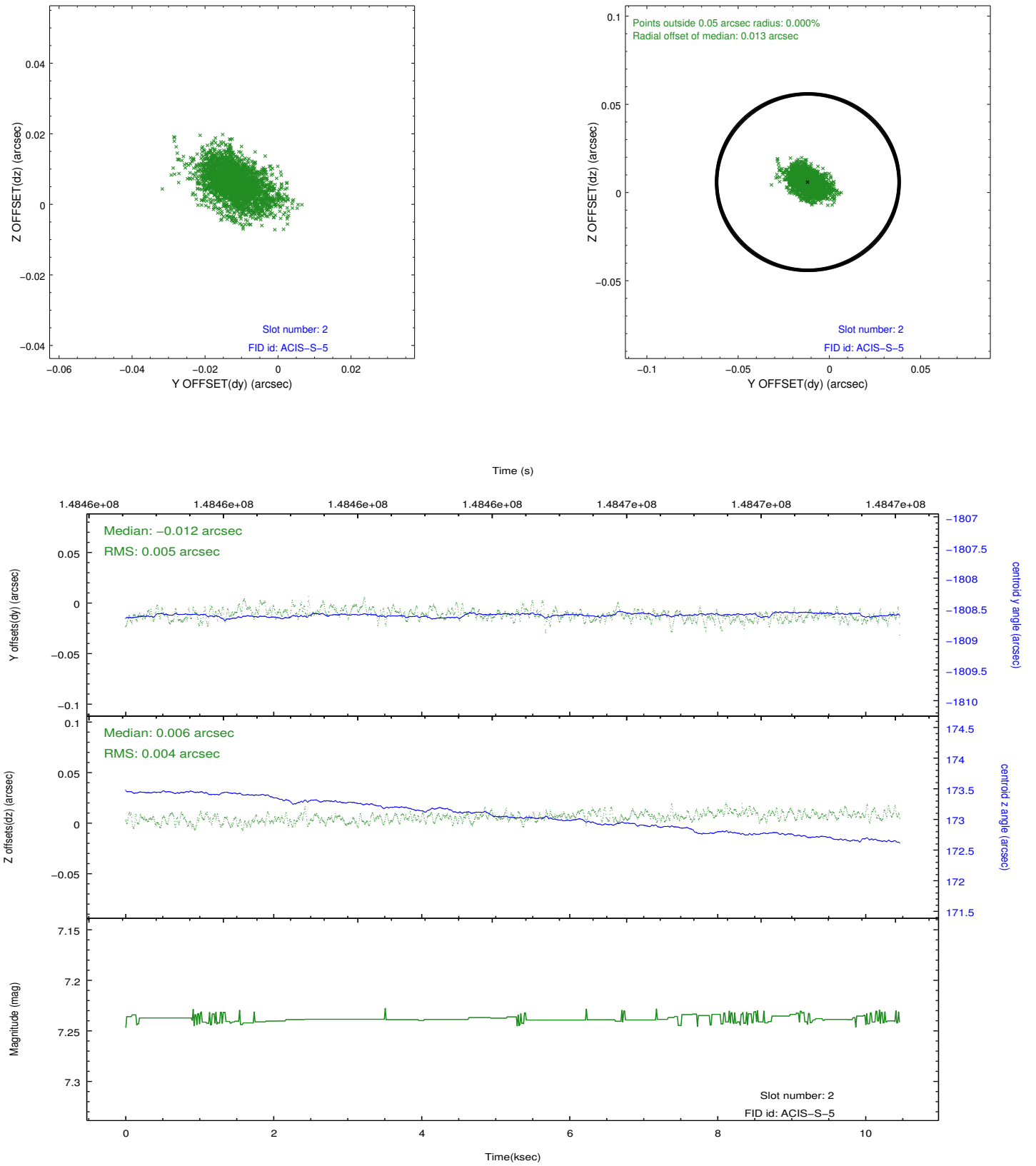
2.5.1 Slot 0



2.5.2 Slot 1



2.5.3 Slot 2



A Summary

A.1 Status

V&V Scientist	Beth Sundheim
V&V Date (YYYY-MM-DD)	2012.10.23
V&V Edition	1
V&V Disposition and Status	OK
V&V Charge Time	10.462

A.2 Comments