

# V&V Reference Report

## L2 ASCDS Version : 7.6.9

Observation 3007 - L2 Version 001  
Chandra X-Ray Center

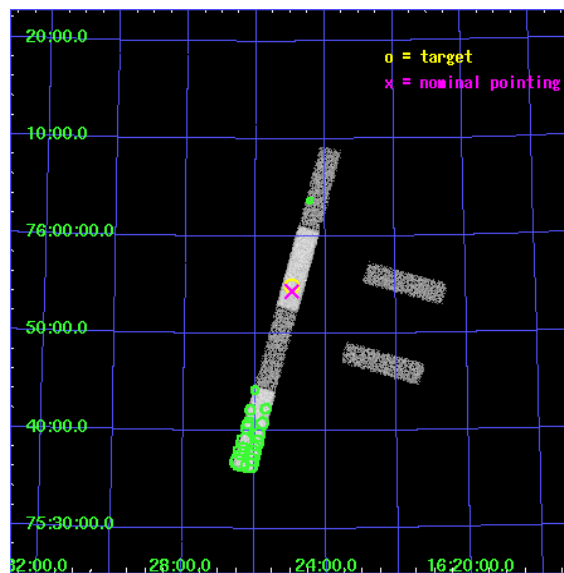
L2 Processing Date : Oct 4 2006

## Contents

<b>1</b>	<b>Front</b>	<b>2</b>
<b>2</b>	<b>OBI</b>	<b>3</b>
2.1	OBI . . . . .	3
2.1.1	Images . . . . .	3
2.1.2	Bias . . . . .	3
2.1.3	Parameters . . . . .	4
2.1.4	Events . . . . .	4
2.2	Compared Parameters . . . . .	5
2.3	Aspect . . . . .	6
2.4	Star Slots . . . . .	9
2.4.1	Slot 3 . . . . .	9
2.4.2	Slot 4 . . . . .	10
2.4.3	Slot 5 . . . . .	11
2.4.4	Slot 6 . . . . .	12
2.4.5	Slot 7 . . . . .	13
2.5	FID Slots . . . . .	14
2.5.1	Slot 0 . . . . .	14
2.5.2	Slot 1 . . . . .	15
2.5.3	Slot 2 . . . . .	16
<b>3</b>	<b>Point Sources</b>	<b>17</b>
<b>A</b>	<b>Summary</b>	<b>18</b>
A.1	Status . . . . .	18
A.2	Comments . . . . .	18

# 1 Front

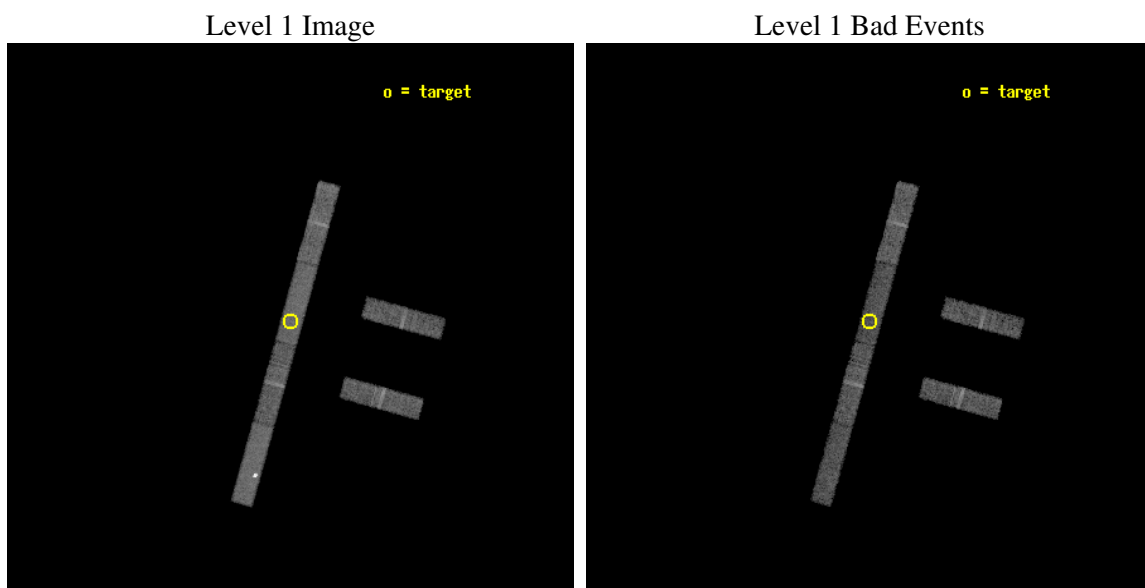
seq_num	700446
obs_id	3007
title	CHANDRA SNAPSHOT OBSERVATIONS OF SOFT X-RAY TRANSIENT AGN
observer	Dr Rick Edelson
object	RX J1624+75
dtcycle	0
cycle	P
ra_targ	246.235417
dec_targ	75.915556
ra_nom	246.23930841115
dec_nom	75.905878080137
roll_nom	285.53733063719
revision	2
ontime	10462.09994331
livetime	10085.807629567
ontime2	10462.09994331
ontime3	10462.09994331
ontime5	10462.09994331
ontime6	10462.09994331
ontime7	10462.09994331
ontime8	10462.09994331
l2events	32519



## 2 OBI

### 2.1 OBI

#### 2.1.1 Images

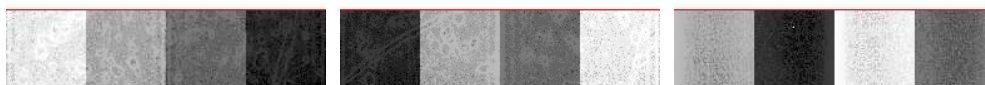


#### 2.1.2 Bias

Chip 2

Chip 3

Chip 5



Chip 6

Chip 7

Chip 8



### 2.1.3 Parameters

obi_num	1
ascdsver	7.6.9
caldbver	3.2.3
date	2006-10-04T09:32:30
revision	2

sched_exp_time	10000.000000
ontime	10553.349726319
ontime2	10553.349726319
ontime3	10553.349726319
ontime5	10553.349726319
ontime6	10553.349726319
ontime7	10553.349726319
ontime8	10554.490746379
l1events	151158

### 2.1.4 Events

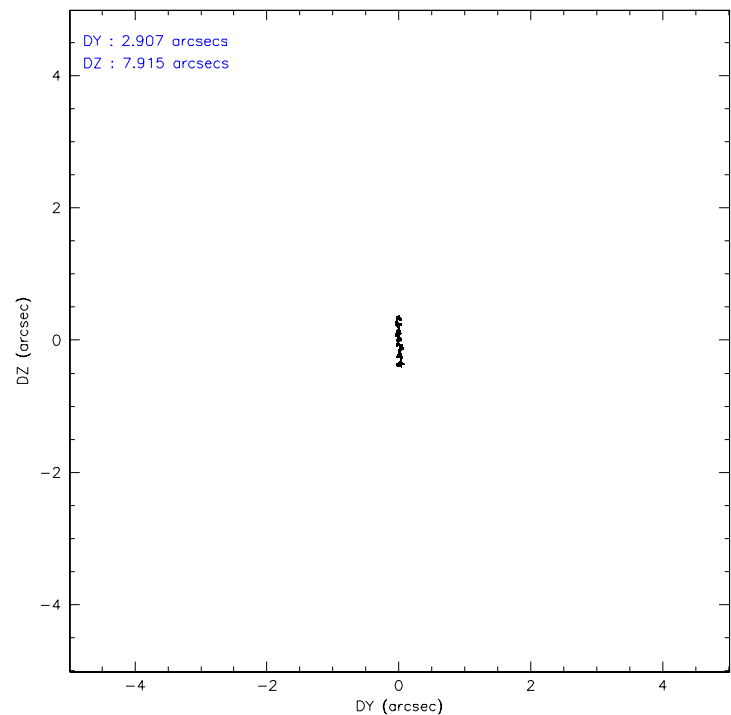
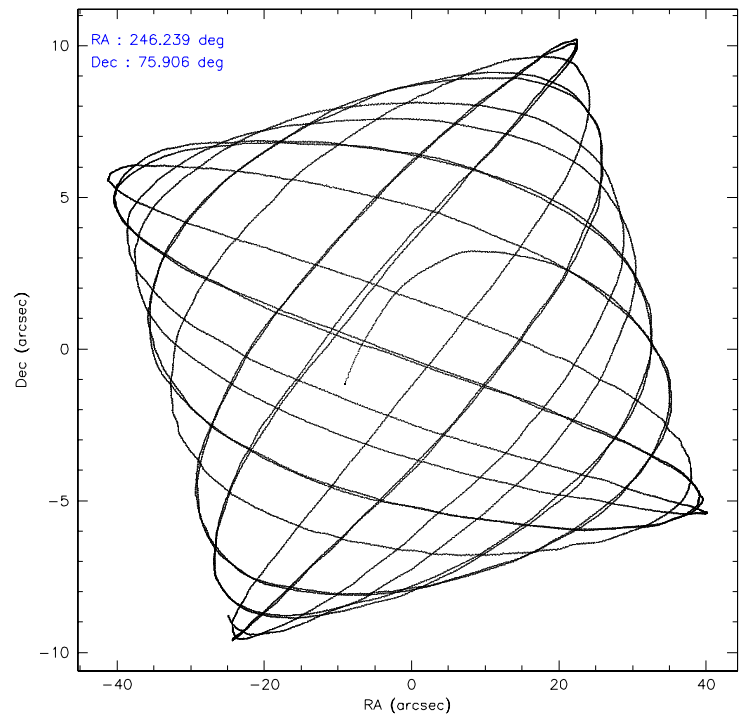
	ccd 2	ccd 3	ccd 5	ccd 6	ccd 7	ccd 8
level 1 events	21831	19852	34849	21318	25864	27444
rejected events	19246	17467	14481	18820	14176	22368
rejected %	88%	87%	41%	88%	54%	81%

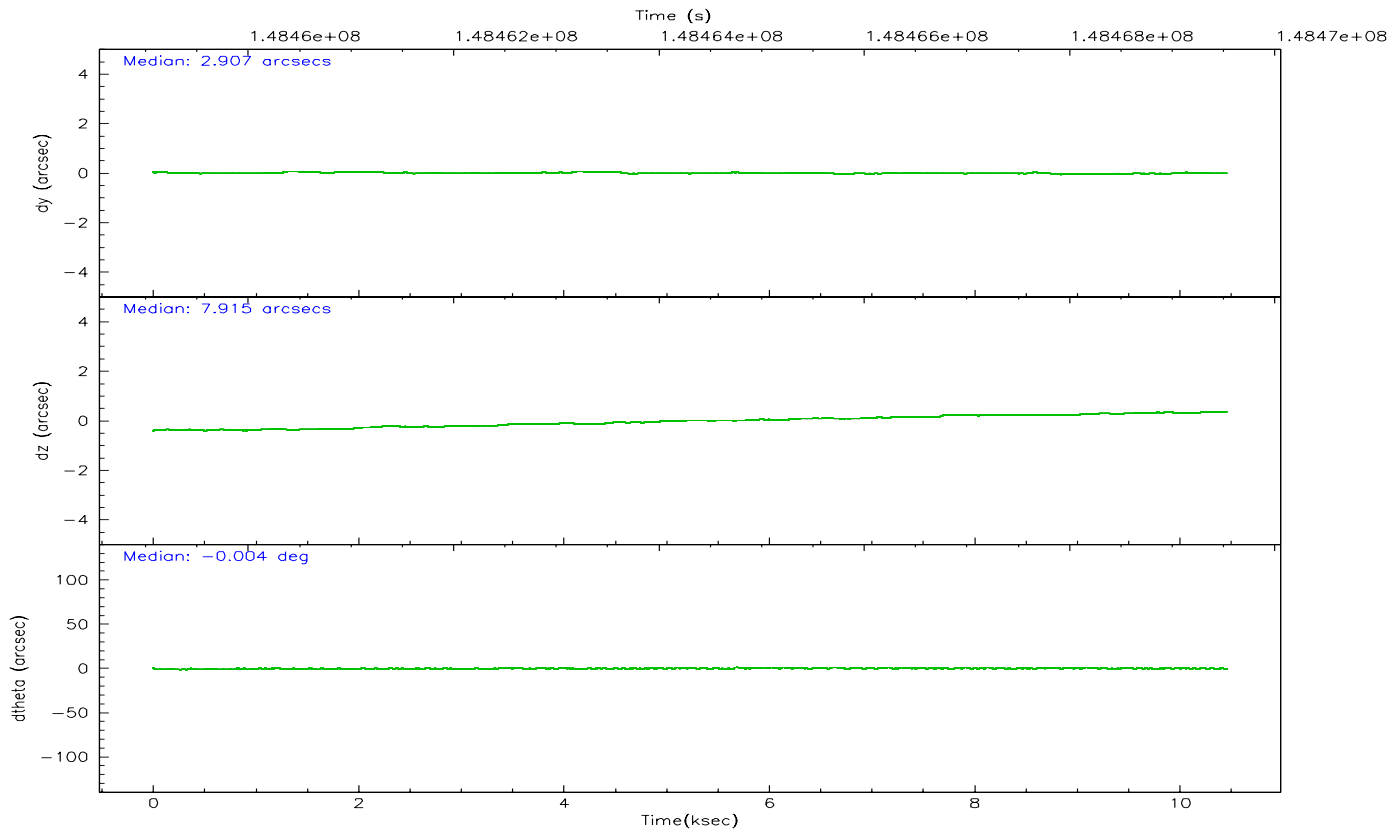
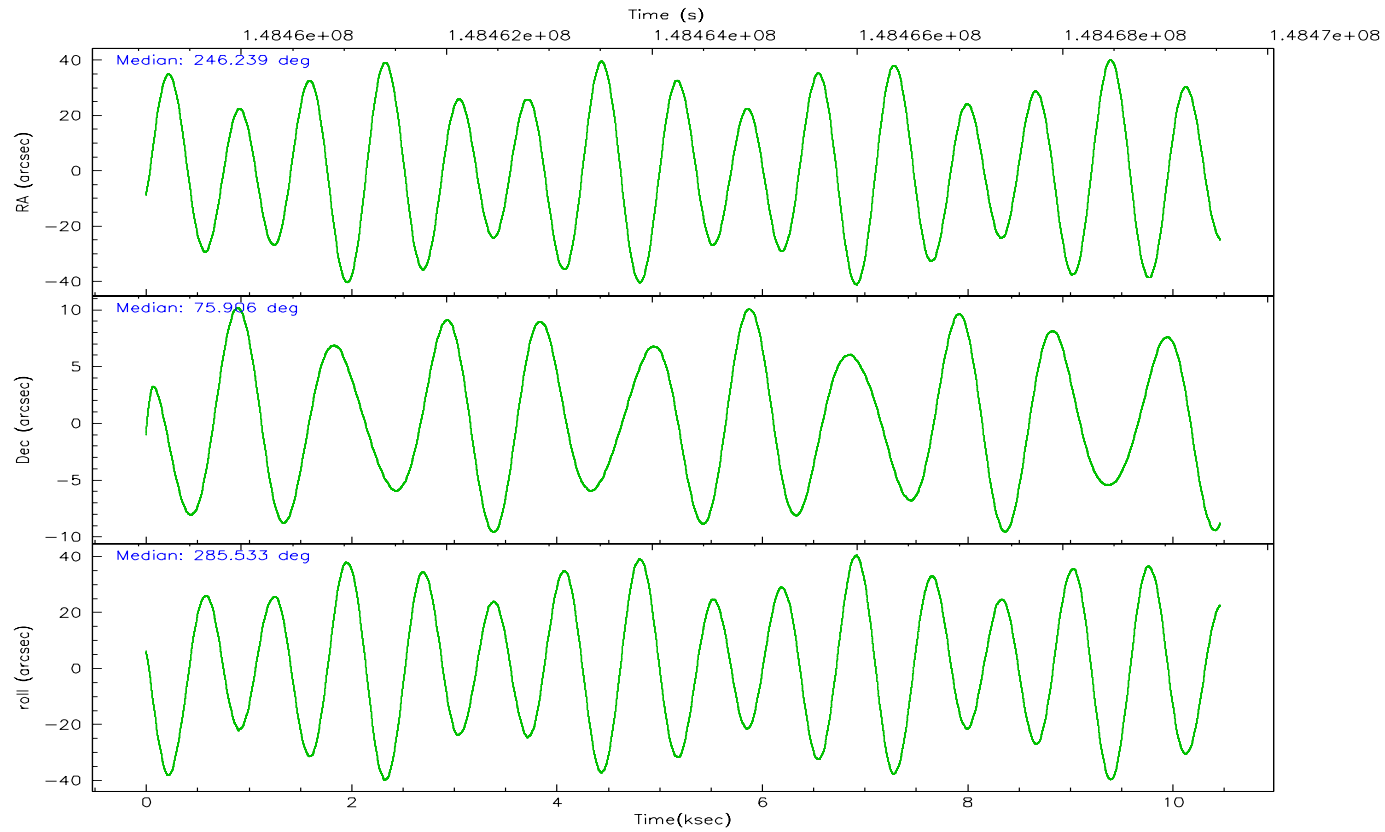
	ccd 2	ccd 3	ccd 5	ccd 6	ccd 7	ccd 8
grade 0 events	1143	1005	8270	1074	948	1684
	5%	5%	23%	5%	3%	6%
grade 1 events	4	10	14	9	13	4
	0%	0%	0%	0%	0%	0%
grade 2 events	444	343	4229	427	2808	911
	2%	1%	12%	2%	10%	3%
grade 3 events	327	334	432	310	812	597
	1%	1%	1%	1%	3%	2%
grade 4 events	349	339	419	311	865	547
	1%	1%	1%	1%	3%	1%
grade 5 events	677	710	1309	811	1701	985
	3%	3%	3%	3%	6%	3%
grade 6 events	340	382	7176	398	6322	1368
	1%	1%	20%	1%	24%	4%
grade 7 events	18547	16729	13000	17978	12395	21348
	84%	84%	37%	84%	47%	77%

## 2.2 Compared Parameters

Parameter	Planned	Actual	Parameter	Planned	Actual
Instrument	ACIS	ACIS	Obspar format version number	6	6
Detector	ACIS-235678	ACIS-235678	Obspar file type	PREDICTED	ACTUAL
Grating	NONE	NONE	Obspar update status	NONE	UPDATED
Data mode	FAINT	FAINT	Number of optional ACIS chips dropped	0	0
Observation mode	POINTING	POINTING	On-chip summing requested	N	N
Pointing RA	246.158216	246.2393084111509	Subarray requested	1/4	1/4
Pointing Dec	75.924733	75.90587808013704	Subarray start row	0	385
Pointing Roll	285.459361	285.5373306371894	Subarray row count	1024	256
SIM focus pos (mm)	-0.684267	-0.6828225247311905	Alternating exposures requested	N	N
SIM defocus (mm)	0	0.001444936568705701	Primary exposure time	0.000000	1.1
SIM translation stage pos (mm)	-190.132523	-190.1400660498719			
SIM translation stage offset (mm)	0	0.00754346686406393			
Observation start time	148459532.184000	148458432.15526			
Observation start date	2002-09-15T06:44:28	2002-09-15T06:27:12			
Observation end time	148469532.184000	148469914.71823			
Observation end date	2002-09-15T09:31:08	2002-09-15T09:38:34			
Read mode	TIMED	TIMED			

2.3 Aspect





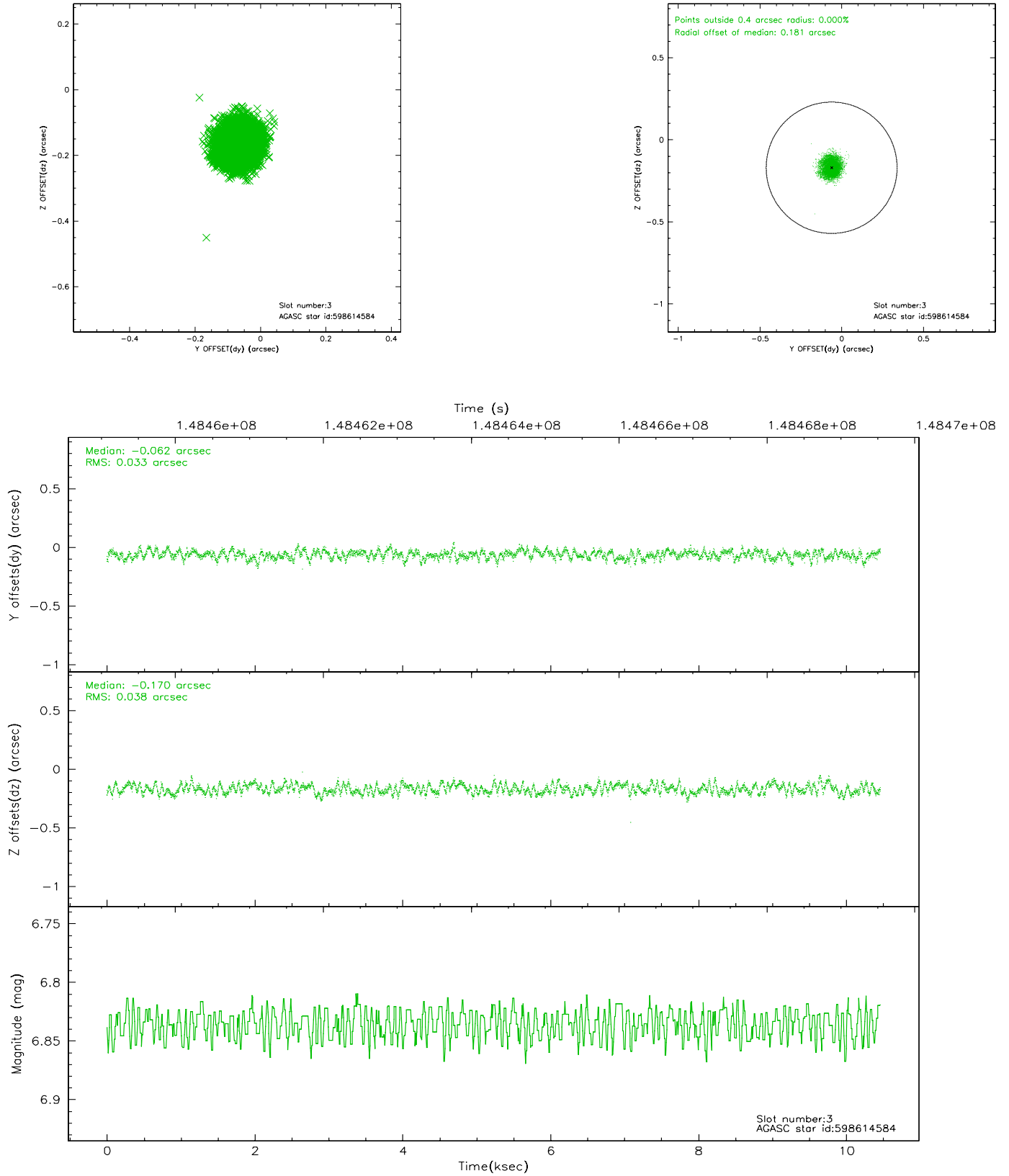
### Slot Statistics

slot	status	id	mag	n_pts	med_dy	med_dz	dr1	dr2	ra	dec	mean_y	mean_z
0	FID	ACIS-S-2	7.11	2553	0.001	0.020	0.008	0.013	0.000000	0.000000	-755.56	-1729.06
1	FID	ACIS-S-4	7.20	2553	-0.051	-0.005	0.006	0.010	0.000000	0.000000	2157.45	178.86
2	FID	ACIS-S-5	7.24	2553	0.019	-0.006	0.006	0.011	0.000000	0.000000	-1807.73	173.13
3	GUIDE	598614584	6.84	5106	-0.062	-0.170	0.054	0.083	245.641823	76.445057	-1923.73	80.02
4	GUIDE	598617088	8.69	5105	-0.105	0.060	0.064	0.101	246.049116	75.330763	2033.59	-665.10
5	GUIDE	598616120	9.07	5105	0.049	0.037	0.075	0.122	245.093666	75.466702	1324.81	-1363.60
6	GUIDE	598613600	9.07	5104	0.017	0.182	0.069	0.111	245.230860	76.446961	-2026.76	-251.09
7	GUIDE	598612240	9.38	5104	0.102	-0.112	0.087	0.141	248.020860	76.176023	-470.01	1792.17

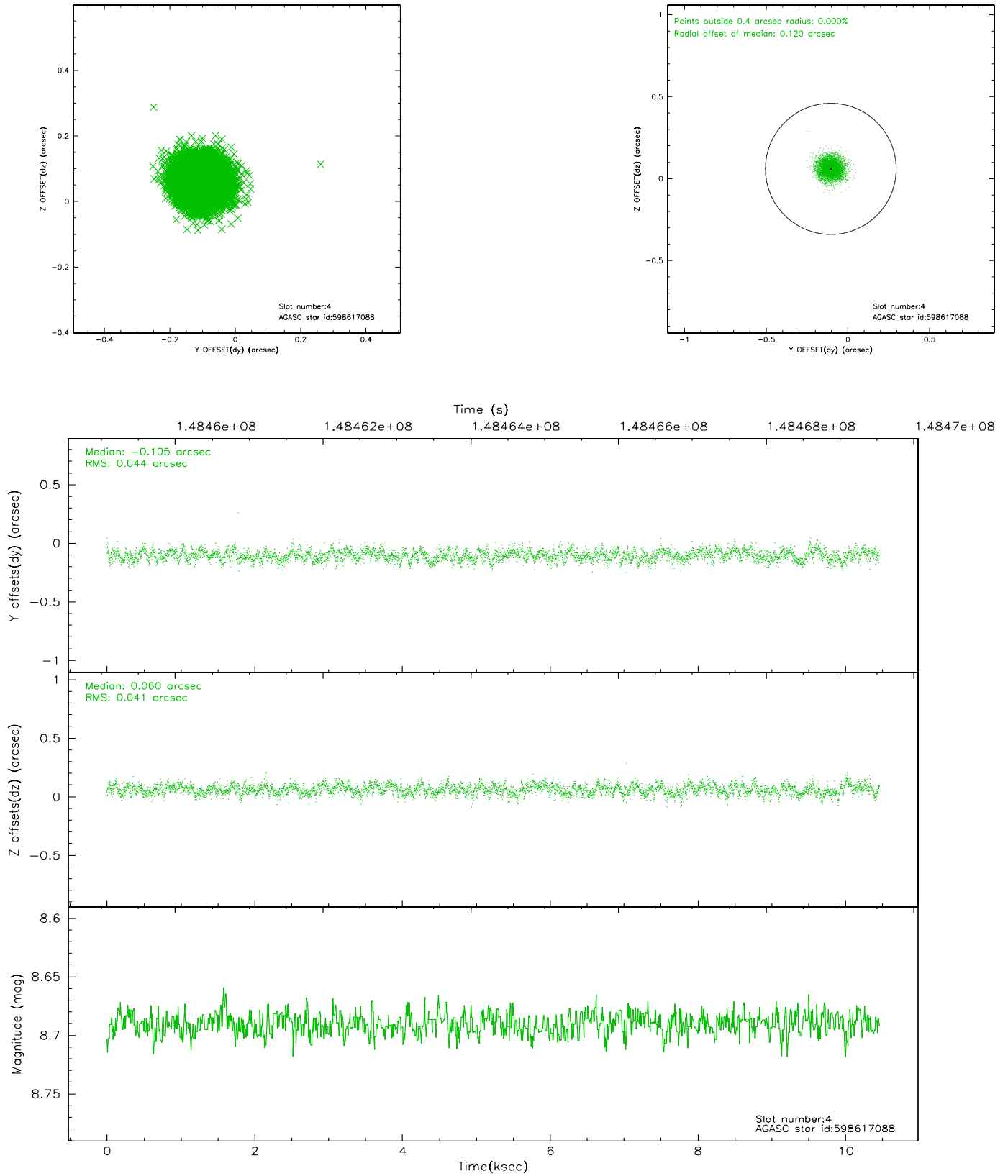


## 2.4 Star Slots

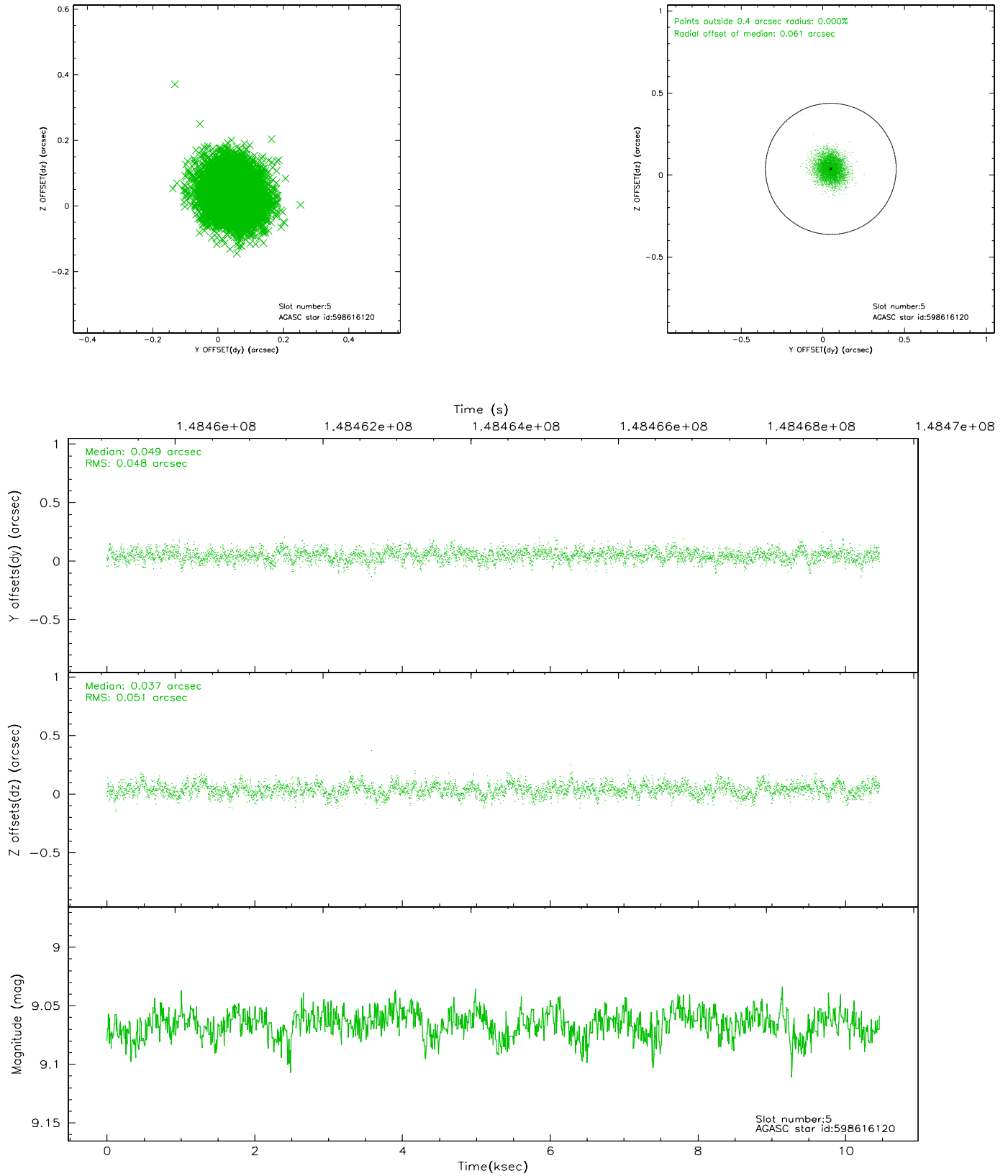
### 2.4.1 Slot 3



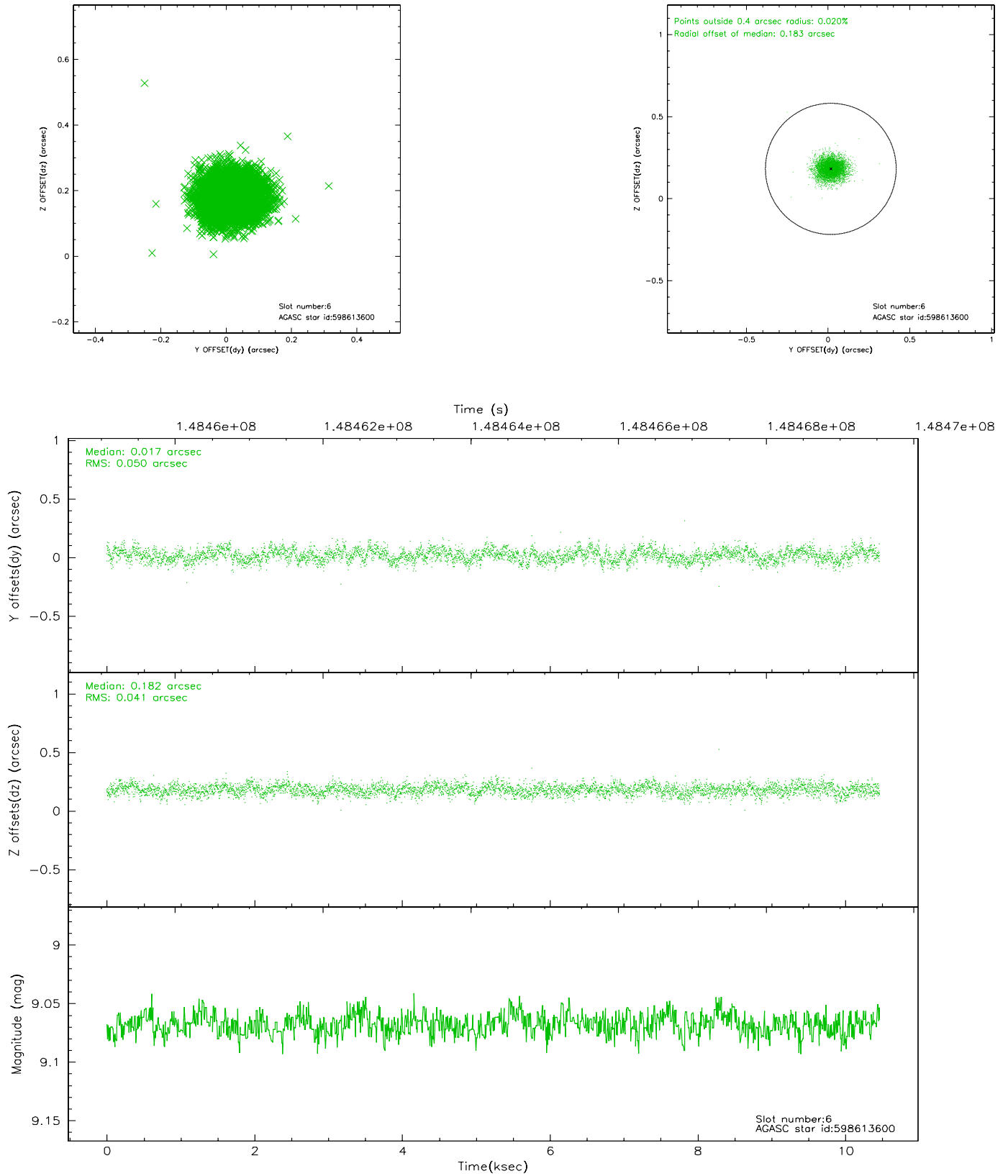
## 2.4.2 Slot 4



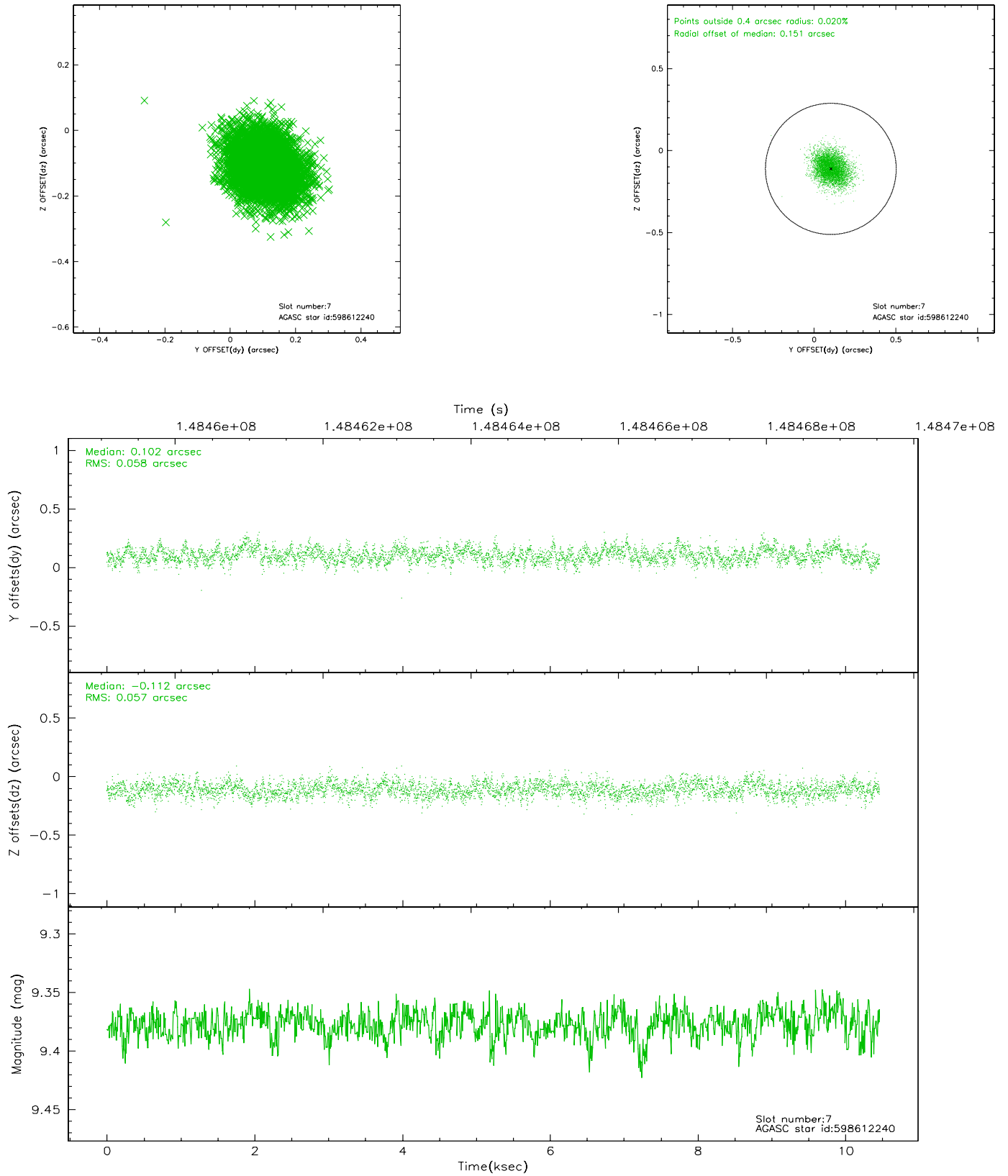
### 2.4.3 Slot 5



## 2.4.4 Slot 6

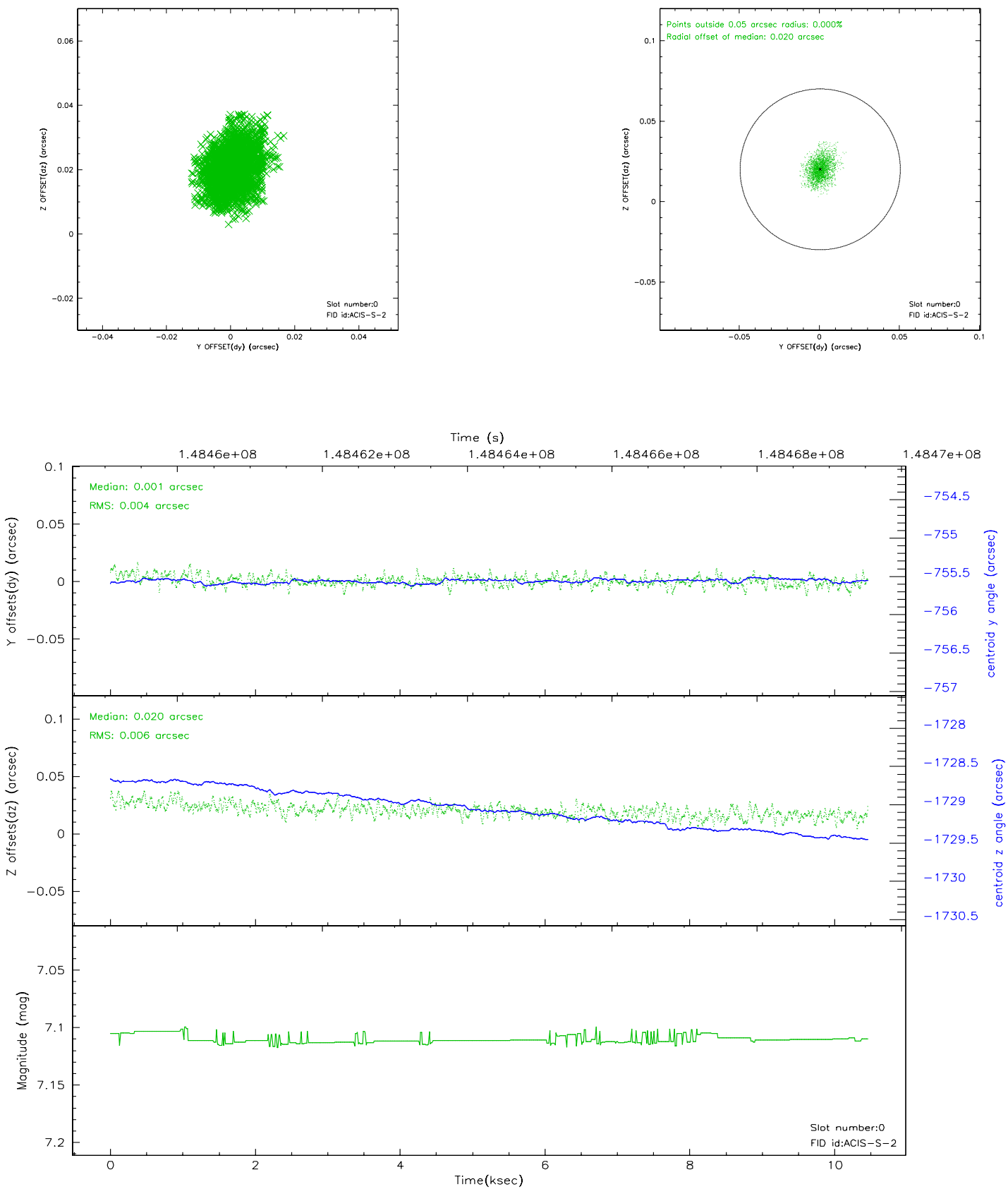


## 2.4.5 Slot 7

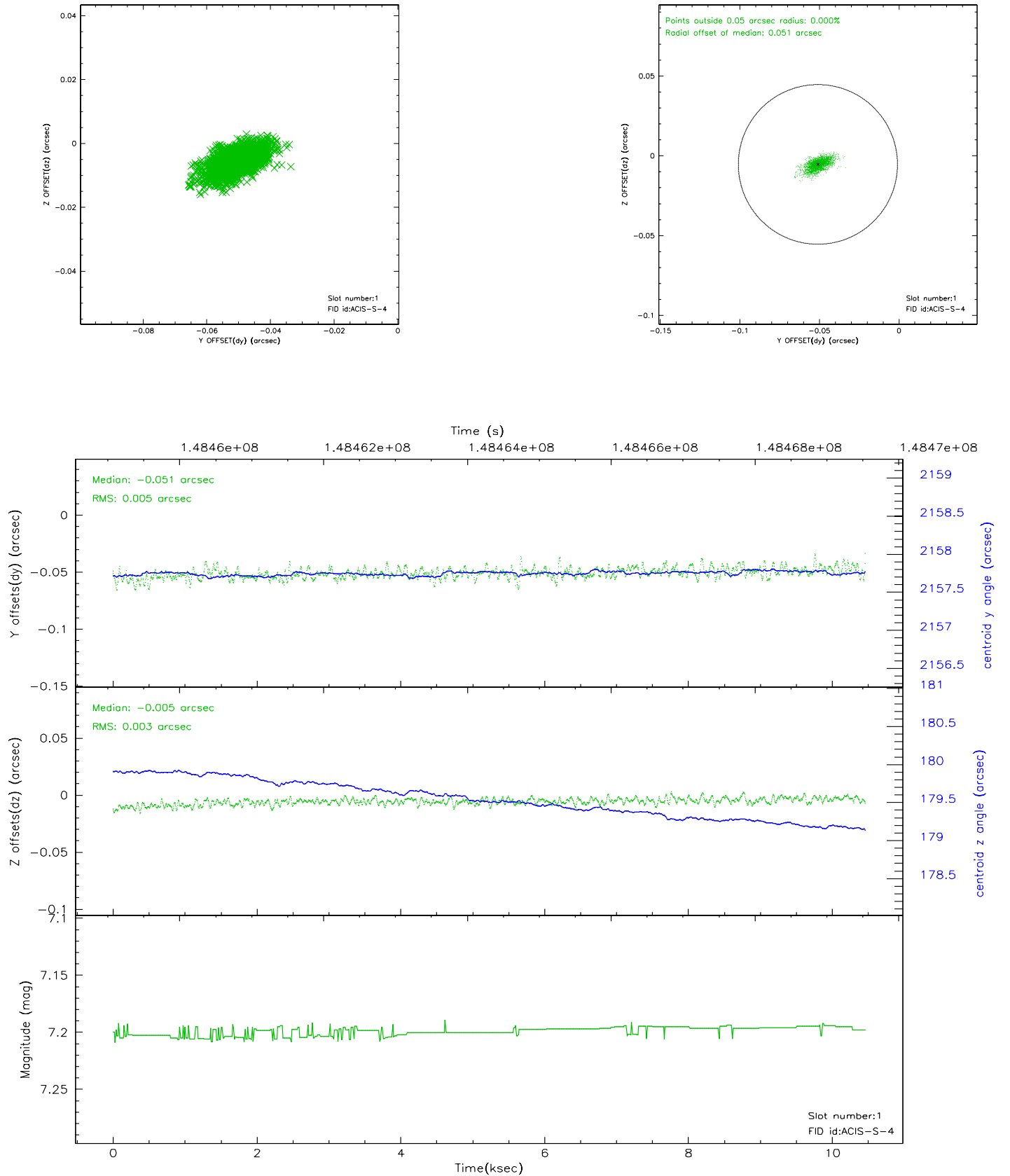


## 2.5 FID Slots

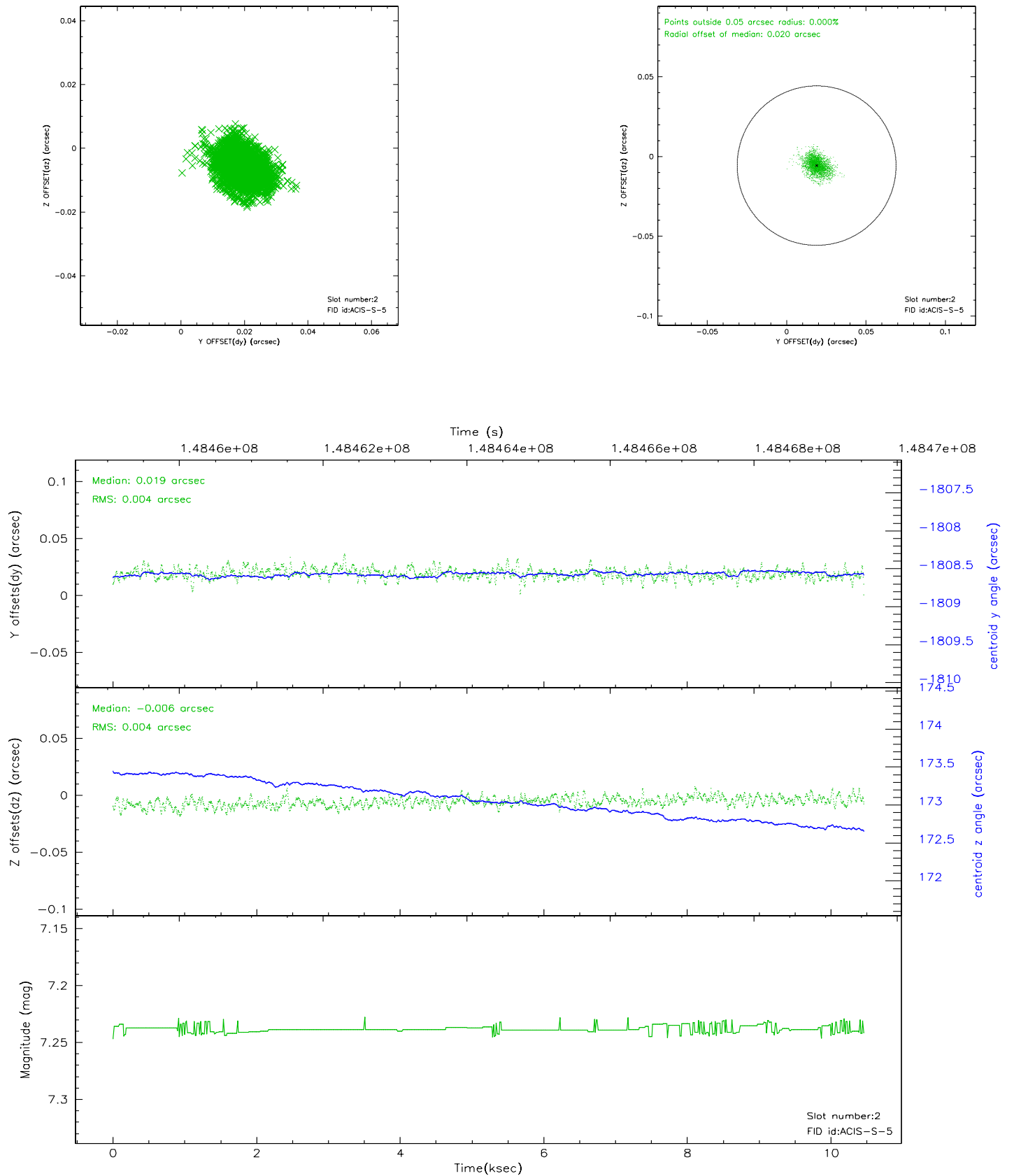
### 2.5.1 Slot 0



## 2.5.2 Slot 1

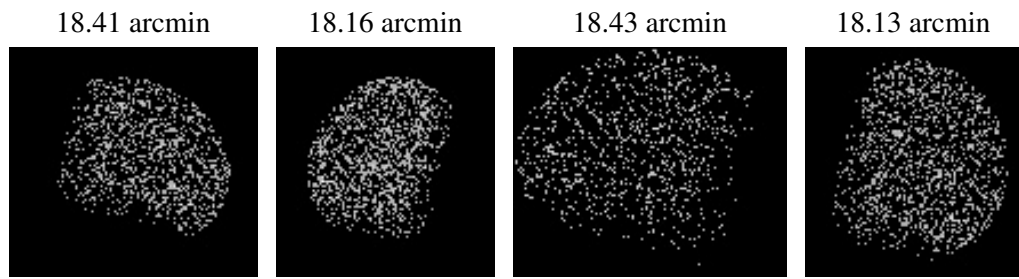


### 2.5.3 Slot 2





### 3 Point Sources



## A Summary

### A.1 Status

V&V Scientist	Jen Lauer
V&V Date (YYYY-MM-DD)	2006.10.04
V&V Edition	1
V&V Disposition and Status	OK
V&V Charge Time	10.462

### A.2 Comments

Date preference not met.