

V&V Reference Report

L2 ASCDS Version : 7.6.9

Observation 3006 - L2 Version 001
Chandra X-Ray Center

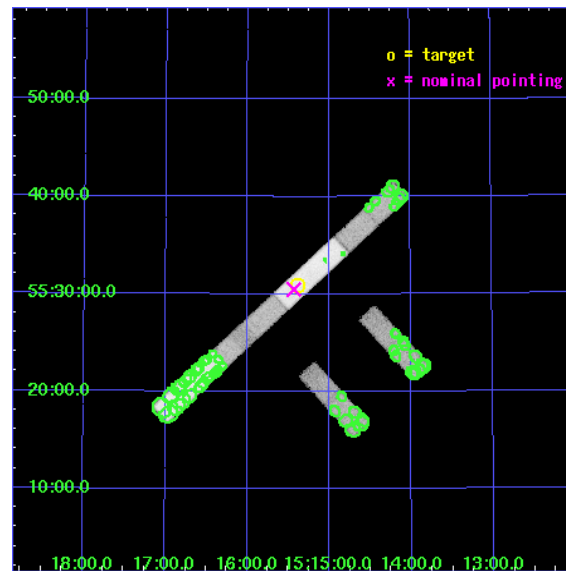
L2 Processing Date : Oct 5 2006

Contents

1	Front	2
2	OBI	3
2.1	OBI	3
2.1.1	Images	3
2.1.2	Bias	3
2.1.3	Parameters	4
2.1.4	Events	4
2.2	Compared Parameters	5
2.3	Aspect	6
2.4	Star Slots	9
2.4.1	Slot 3	9
2.4.2	Slot 4	10
2.4.3	Slot 5	11
2.4.4	Slot 6	12
2.4.5	Slot 7	13
2.5	FID Slots	14
2.5.1	Slot 0	14
2.5.2	Slot 1	15
2.5.3	Slot 2	16
3	Point Sources	17
A	Summary	18
A.1	Status	18
A.2	Comments	18

1 Front

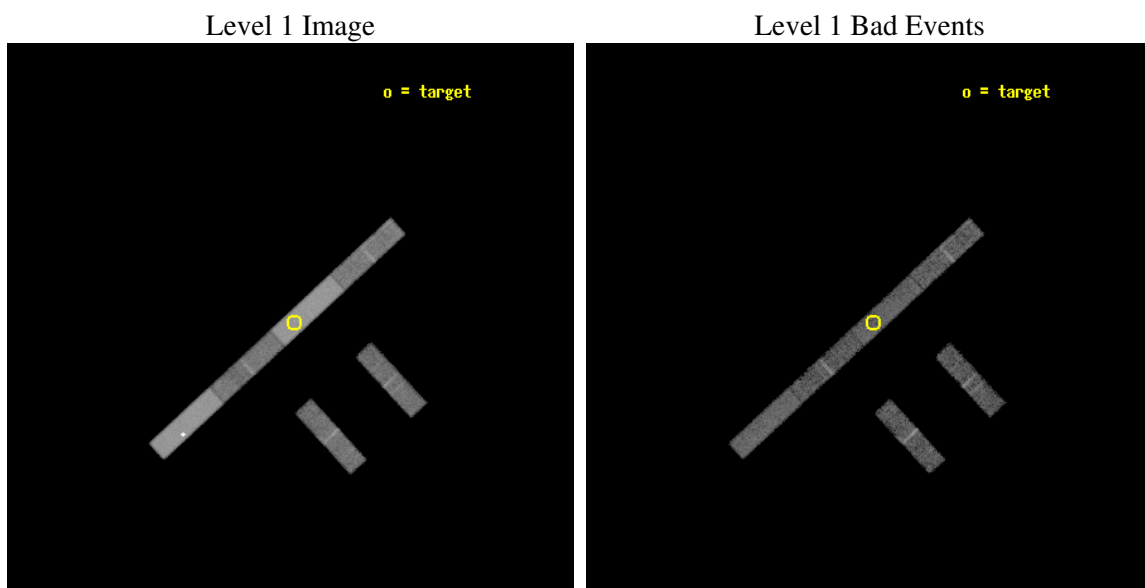
seq_num	700445
obs_id	3006
title	CHANDRA SNAPSHOT OBSERVATIONS OF SOFT X-RAY TRANSIENT AGN
observer	Dr Rick Edelson
object	NGC 5905
dtcycle	0
cycle	P
ra_targ	228.8475
dec_targ	55.515833
ra_nom	228.85780134769
dec_nom	55.508093298822
roll_nom	317.31773318644
revision	2
ontime	9984.6999458969
livetime	9625.5783675301
ontime2	9984.6999458969
ontime3	9984.6999458969
ontime5	9984.6999458969
ontime6	9984.6999458969
ontime7	9984.6999458969
ontime8	9984.6999458969
l2events	170529



2 OBI

2.1 OBI

2.1.1 Images



2.1.2 Bias

Chip 2

Chip 3

Chip 5



Chip 6

Chip 7

Chip 8



2.1.3 Parameters

obi_num	0
ascdsver	7.6.9
caldbver	3.2.3
date	2006-10-05T18:44:42
revision	2

sched_exp_time	9433.267000
ontime	9986.2569137216
ontime2	9986.2569336295
ontime3	9986.2569336295
ontime5	9986.2569137216
ontime6	9986.2569137216
ontime7	9986.2569137216
ontime8	9986.2569336295
l1events	298106

2.1.4 Events

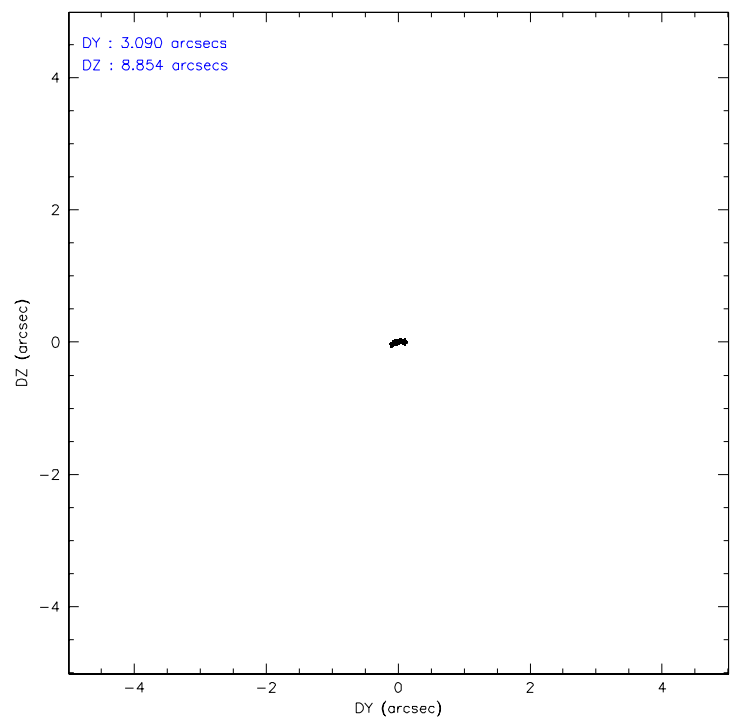
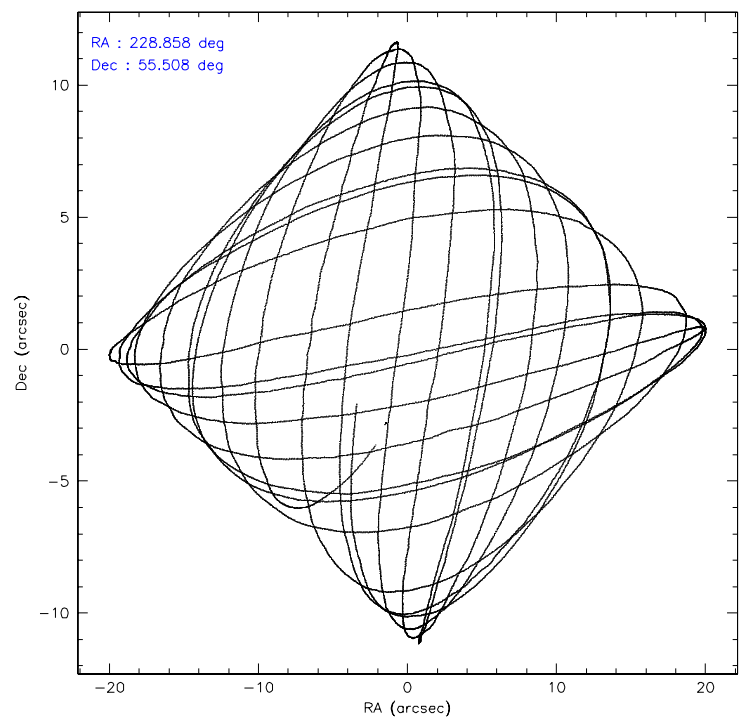
	ccd 2	ccd 3	ccd 5	ccd 6	ccd 7	ccd 8
level 1 events	30397	28401	86177	33650	79603	39878
rejected events	17630	16230	21264	16831	19017	20419
rejected %	57%	57%	24%	50%	23%	51%

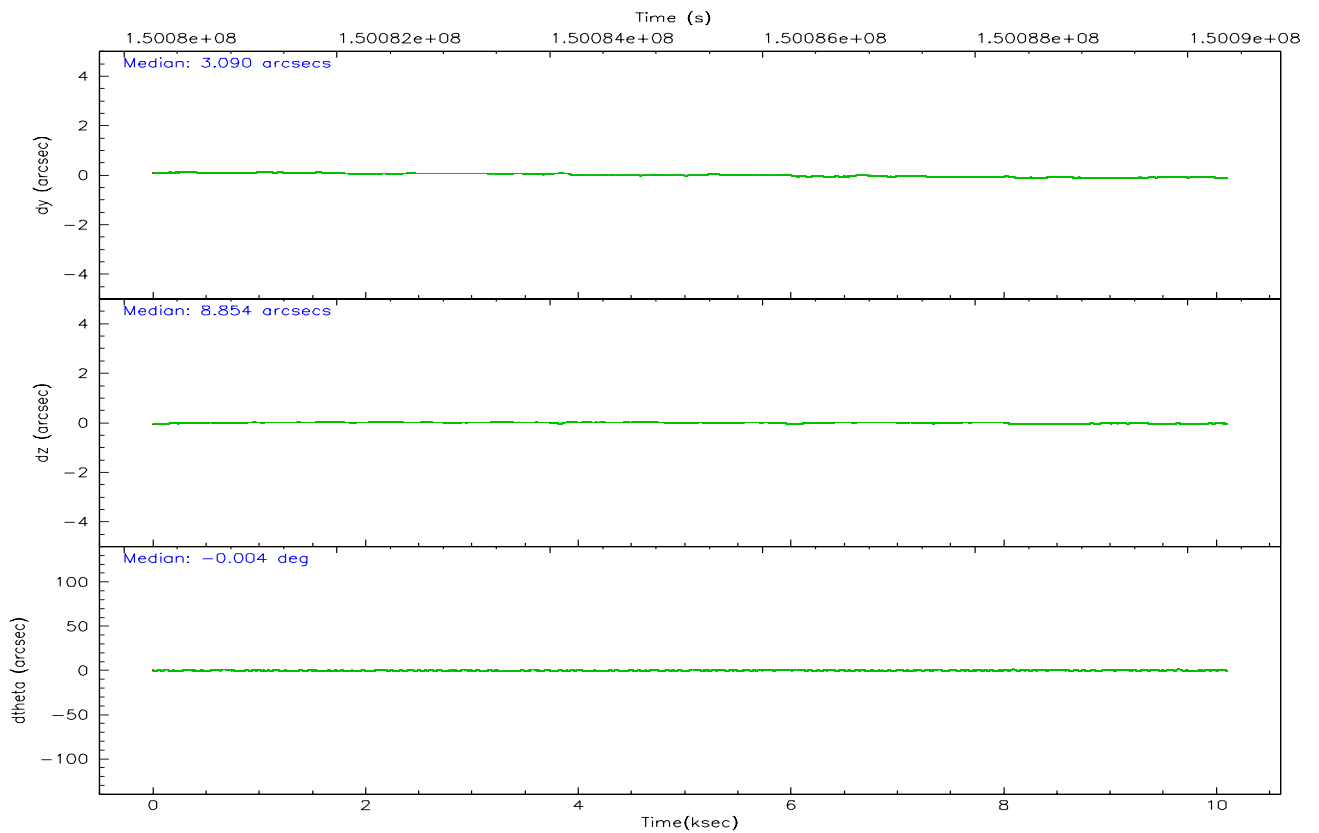
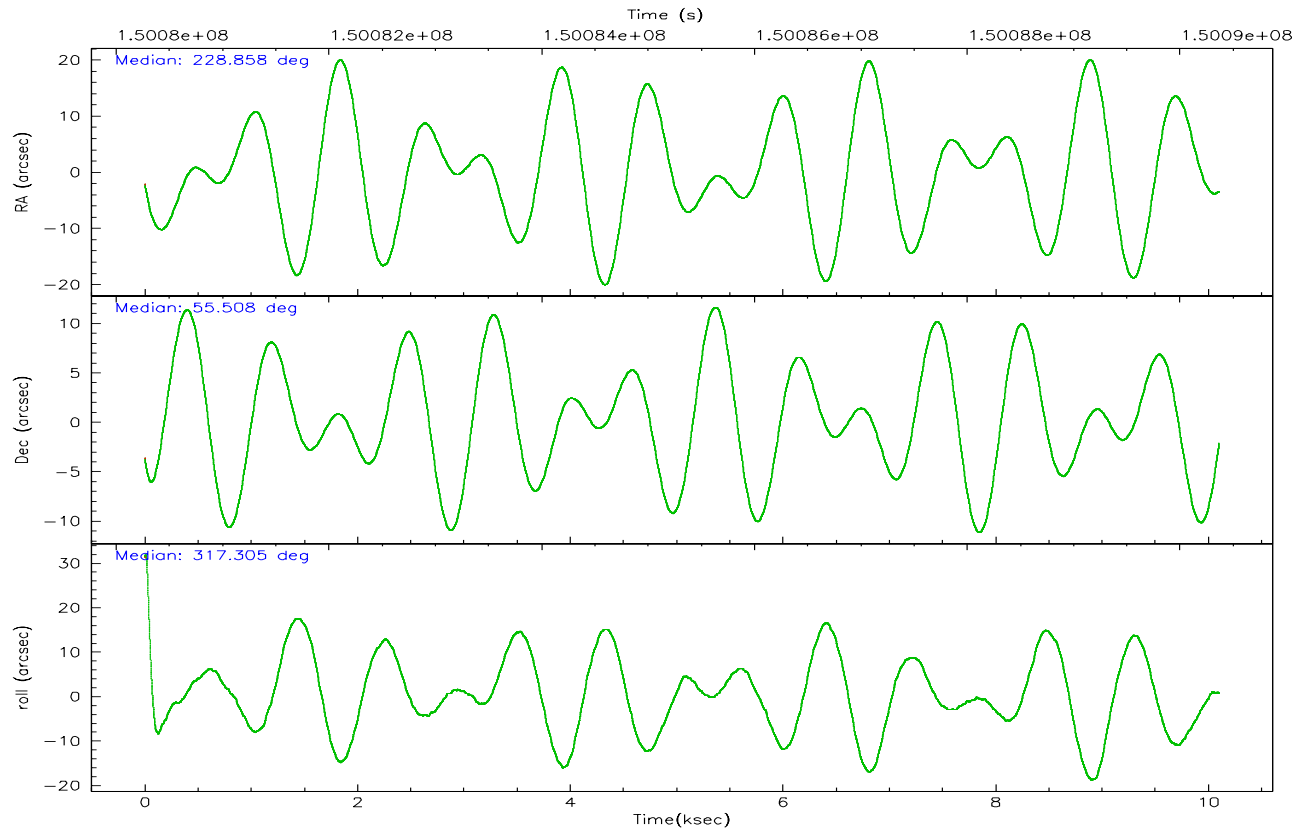
	ccd 2	ccd 3	ccd 5	ccd 6	ccd 7	ccd 8
grade 0 events	9308	8700	13893	12362	5780	13125
	30%	30%	16%	36%	7%	32%
grade 1 events	13	19	45	13	18	26
	0%	0%	0%	0%	0%	0%
grade 2 events	1537	1574	18624	2310	12177	2627
	5%	5%	21%	6%	15%	6%
grade 3 events	559	615	2291	619	3723	902
	1%	2%	2%	1%	4%	2%
grade 4 events	543	566	2294	578	3590	929
	1%	1%	2%	1%	4%	2%
grade 5 events	686	661	1939	717	1884	857
	2%	2%	2%	2%	2%	2%
grade 6 events	823	716	27819	951	35323	1879
	2%	2%	32%	2%	44%	4%
grade 7 events	16928	15550	19272	16100	17108	19533
	55%	54%	22%	47%	21%	48%

2.2 Compared Parameters

Parameter	Planned	Actual	Parameter	Planned	Actual
Instrument	ACIS	ACIS	Obspar format version number	6	6
Detector	ACIS-235678	ACIS-235678	Obspar file type	PREDICTED	ACTUAL
Grating	NONE	NONE	Obspar update status	NONE	UPDATED
Data mode	FAINT	FAINT	Number of optional ACIS chips dropped	0	0
Observation mode	POINTING	POINTING	On-chip summing requested	N	N
Pointing RA	228.810770	228.8578013476884	Subarray requested	1/4	1/4
Pointing Dec	55.513742	55.5080932988217	Subarray start row	0	385
Pointing Roll	317.199817	317.3177331864434	Subarray row count	1024	256
SIM focus pos (mm)	-0.684267	-0.6828225247311905	Alternating exposures requested	N	N
SIM defocus (mm)	0	0.001444936568705701	Primary exposure time	0.000000	1.1
SIM translation stage pos (mm)	-190.132523	-190.1425803651734			
SIM translation stage offset (mm)	0	0.01005778216563158			
Observation start time	150080940.184000	150079741.34736			
Observation start date	2002-10-04T01:07:56	2002-10-04T00:49:01			
Observation end time	150090373.184000	150090687.83531			
Observation end date	2002-10-04T03:45:09	2002-10-04T03:51:27			
Read mode	TIMED	TIMED			

2.3 Aspect



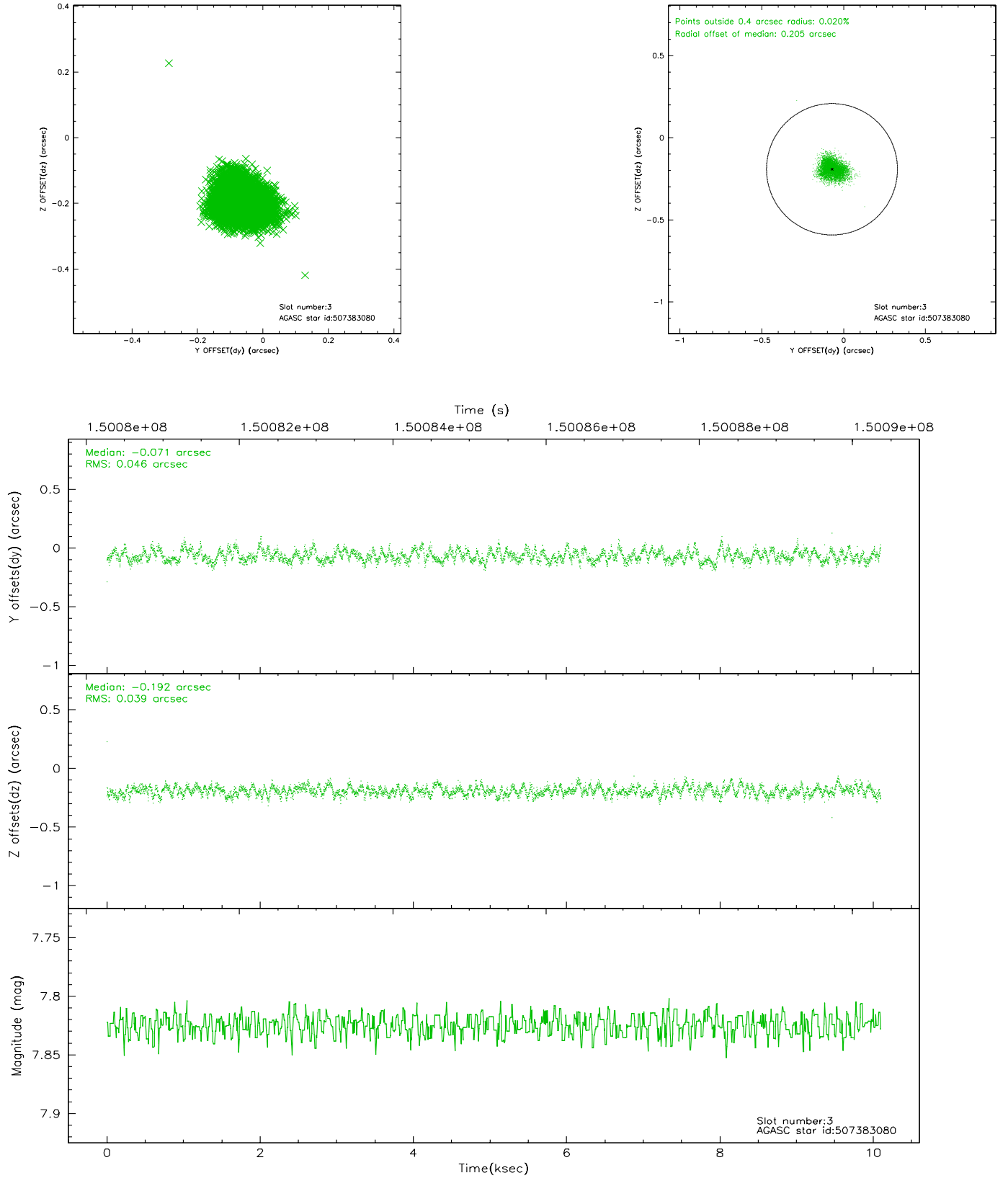


Slot Statistics

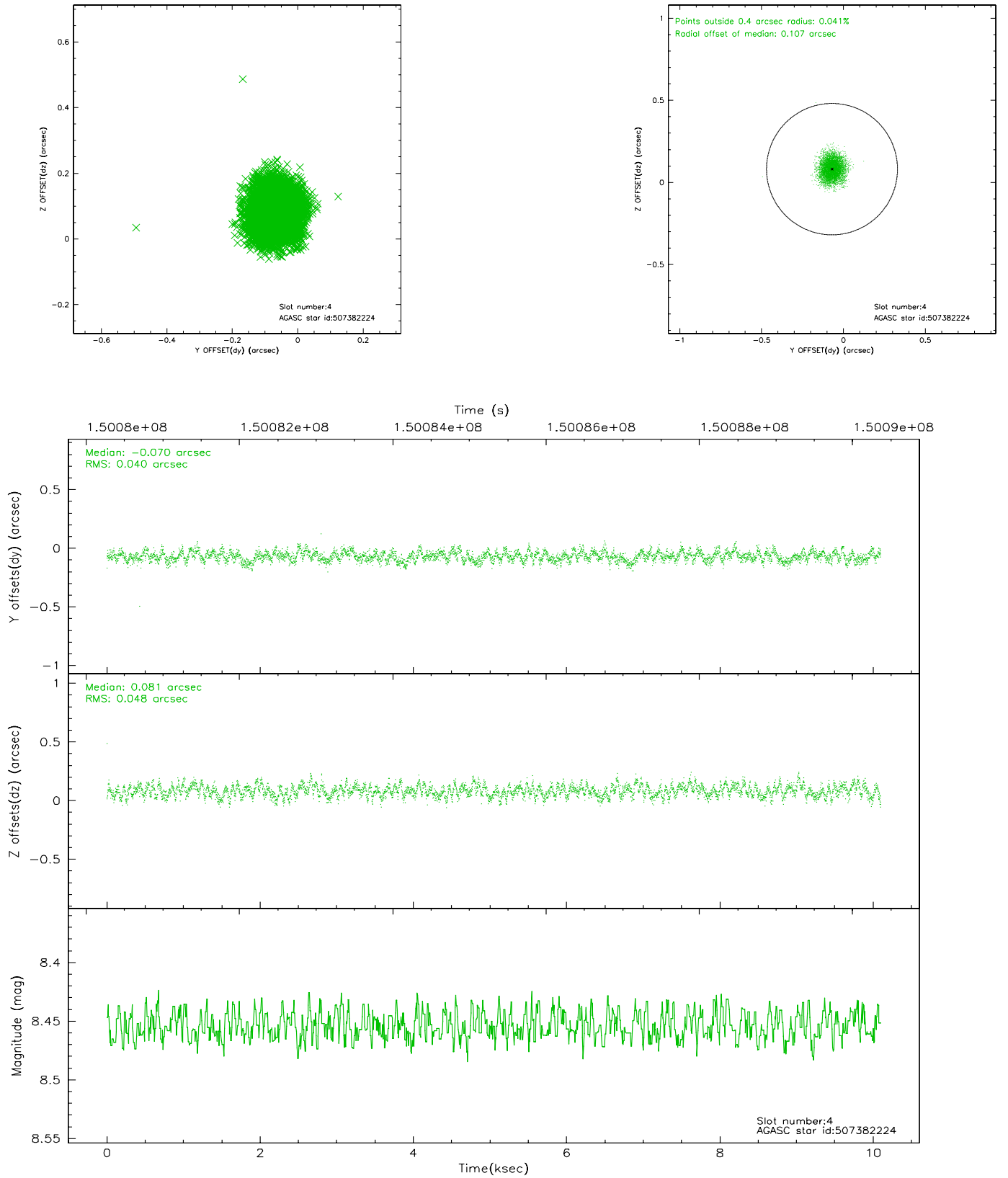
slot	status	id	mag	n_pts	med_dy	med_dz	dr1	dr2	ra	dec	mean_y	mean_z
0	FID	ACIS-S-2	7.11	2464	-0.009	0.015	0.006	0.011	0.000000	0.000000	-755.74	-1730.00
1	FID	ACIS-S-4	7.20	2464	-0.039	0.000	0.006	0.011	0.000000	0.000000	2157.27	177.93
2	FID	ACIS-S-5	7.24	2464	0.017	-0.007	0.007	0.012	0.000000	0.000000	-1807.89	172.19
3	GUIDE	507383080	7.83	4928	-0.071	-0.192	0.064	0.100	228.241272	56.046455	-2147.04	632.46
4	GUIDE	507382224	8.45	4928	-0.070	0.081	0.067	0.106	227.706518	55.422449	-1444.82	-1760.41
5	GUIDE	507383608	8.41	4926	0.020	-0.005	0.067	0.110	228.419739	56.118692	-2057.93	1066.11
6	GUIDE	507382176	8.52	4926	0.028	0.046	0.066	0.109	228.417194	55.425629	-376.58	-776.65
7	GUIDE	507382608	9.45	4915	0.094	0.076	0.110	0.190	228.990890	56.011036	-951.48	1560.49

2.4 Star Slots

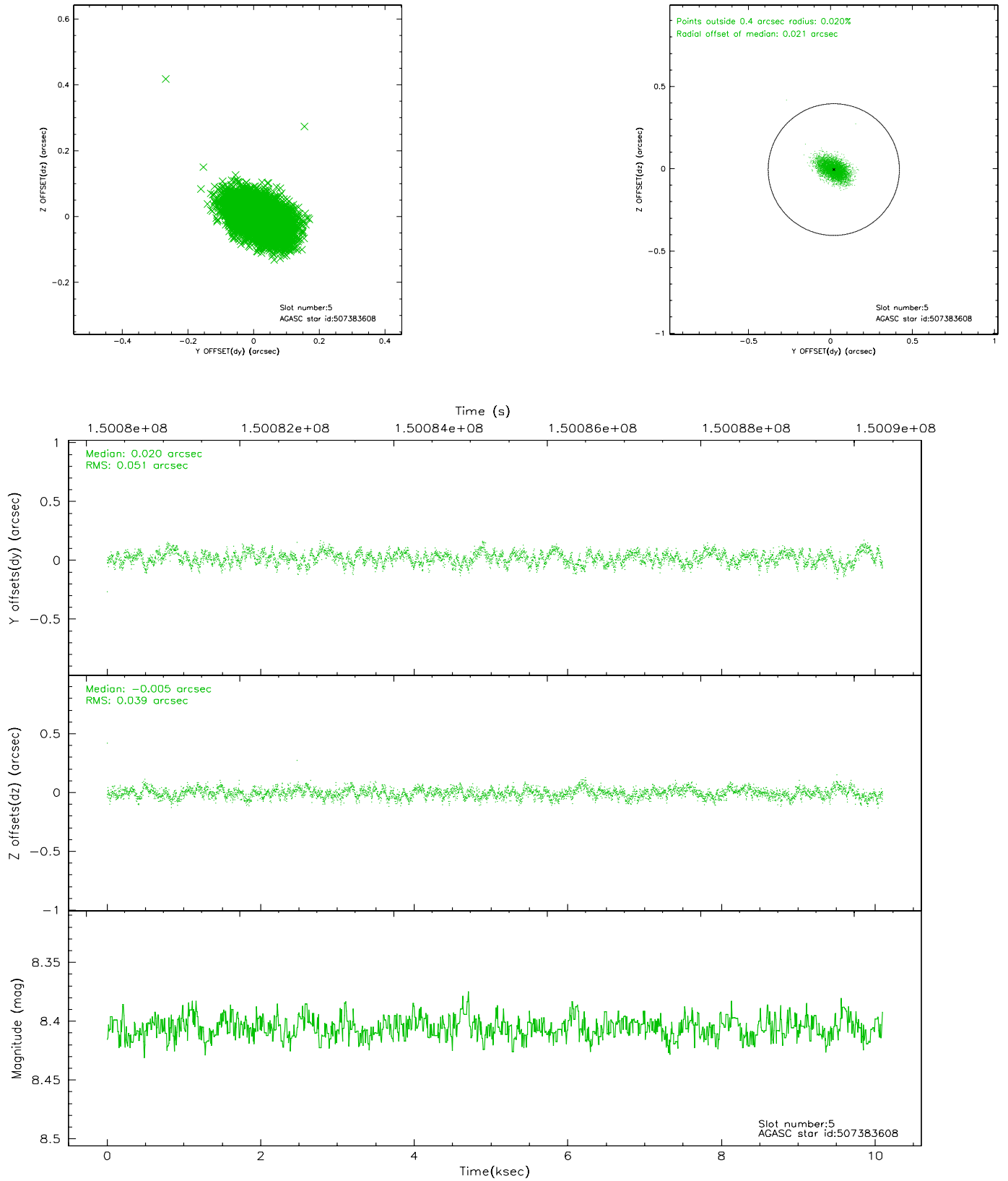
2.4.1 Slot 3



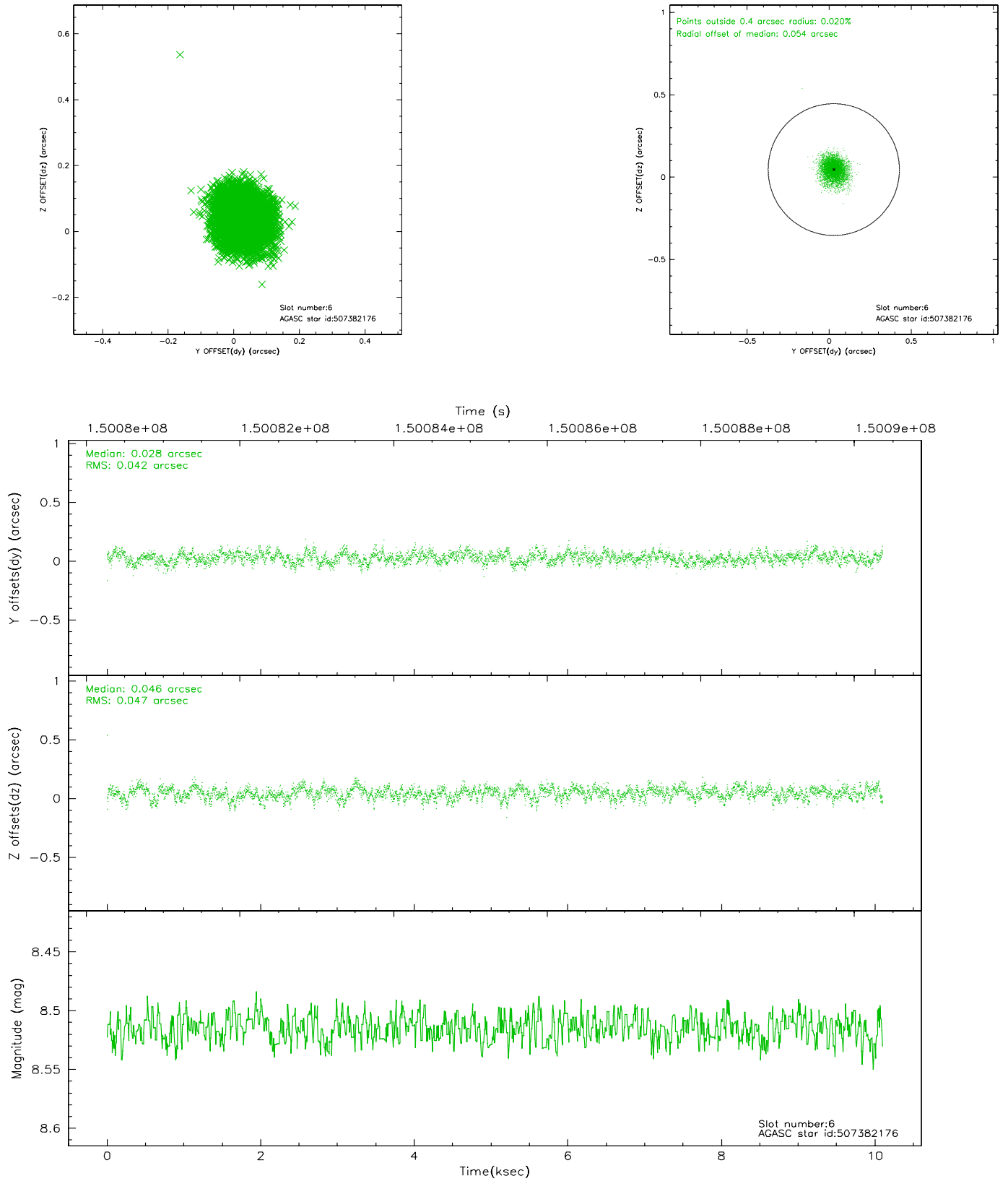
2.4.2 Slot 4



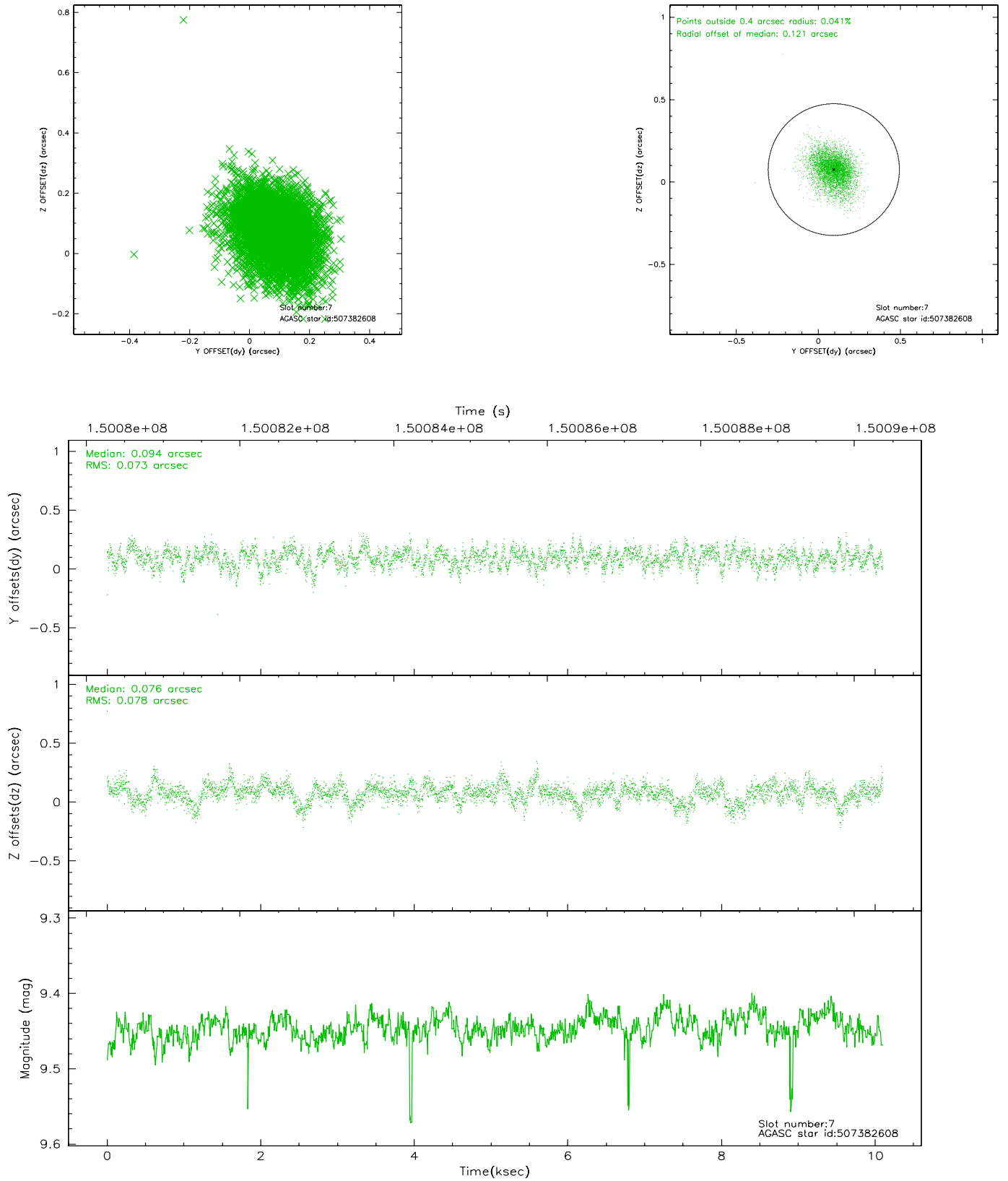
2.4.3 Slot 5



2.4.4 Slot 6

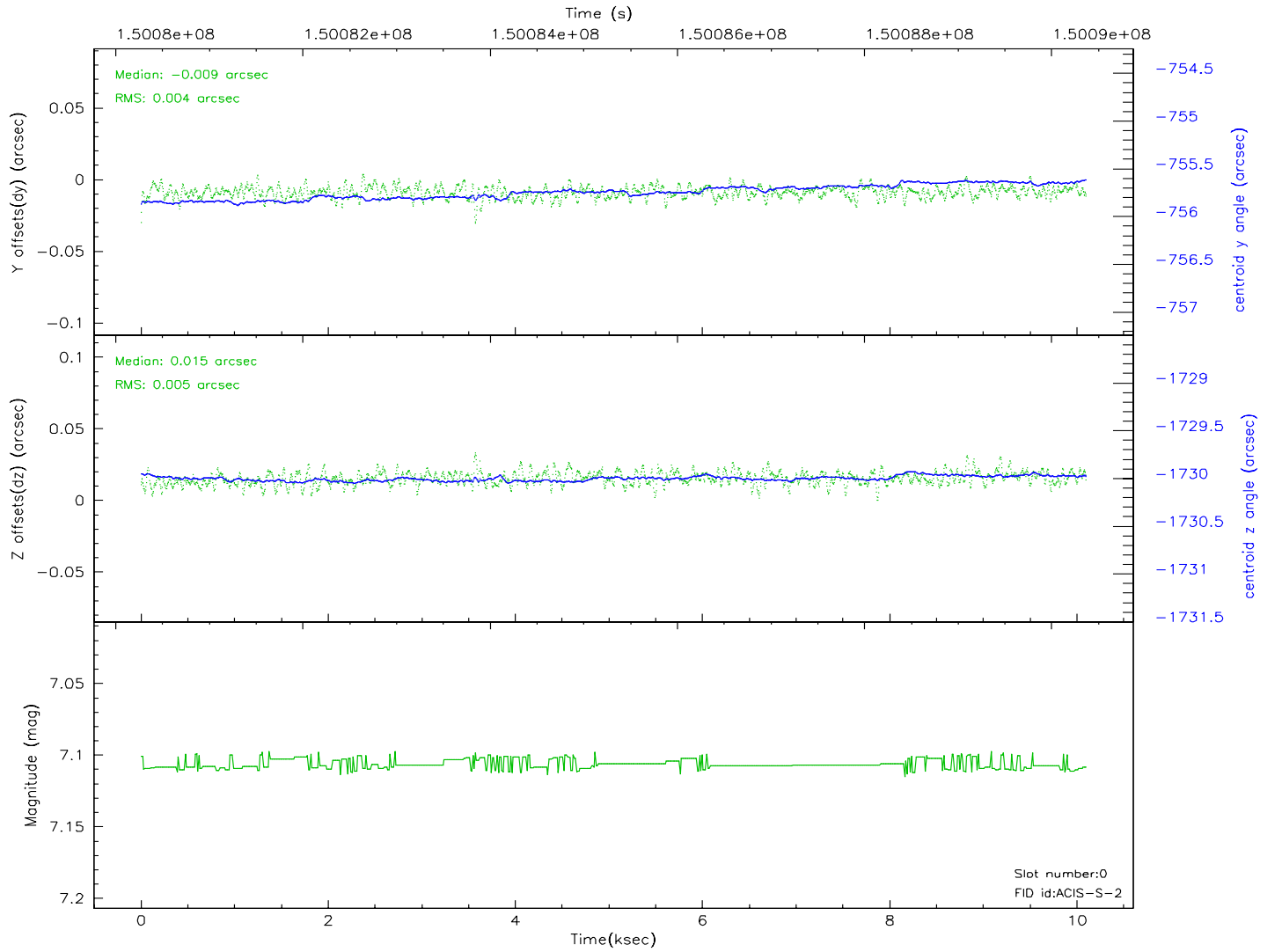
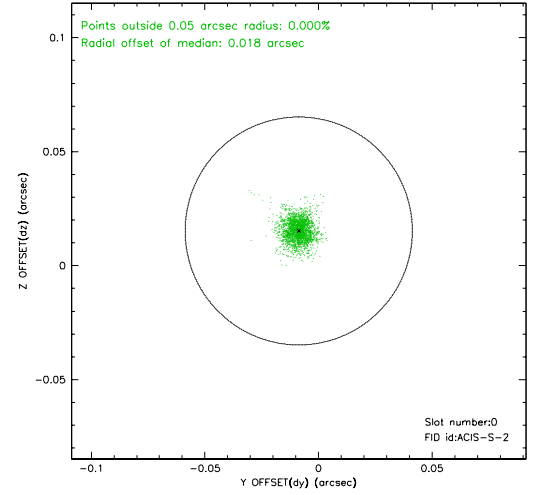
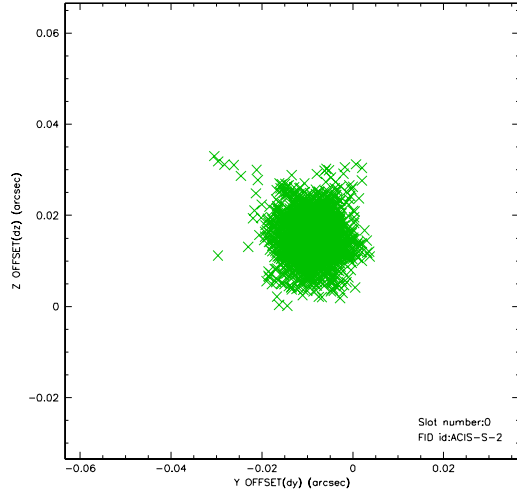


2.4.5 Slot 7

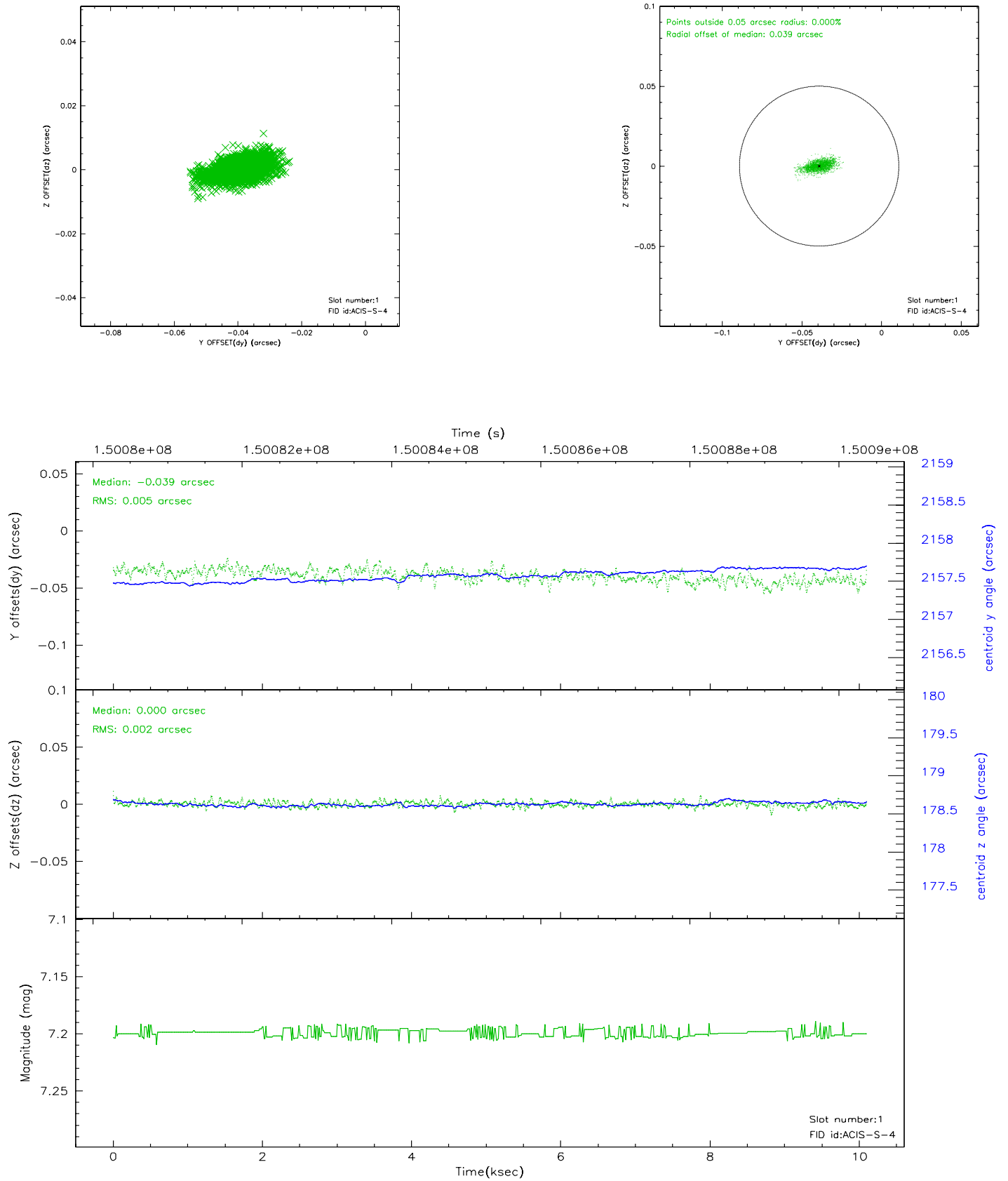


2.5 FID Slots

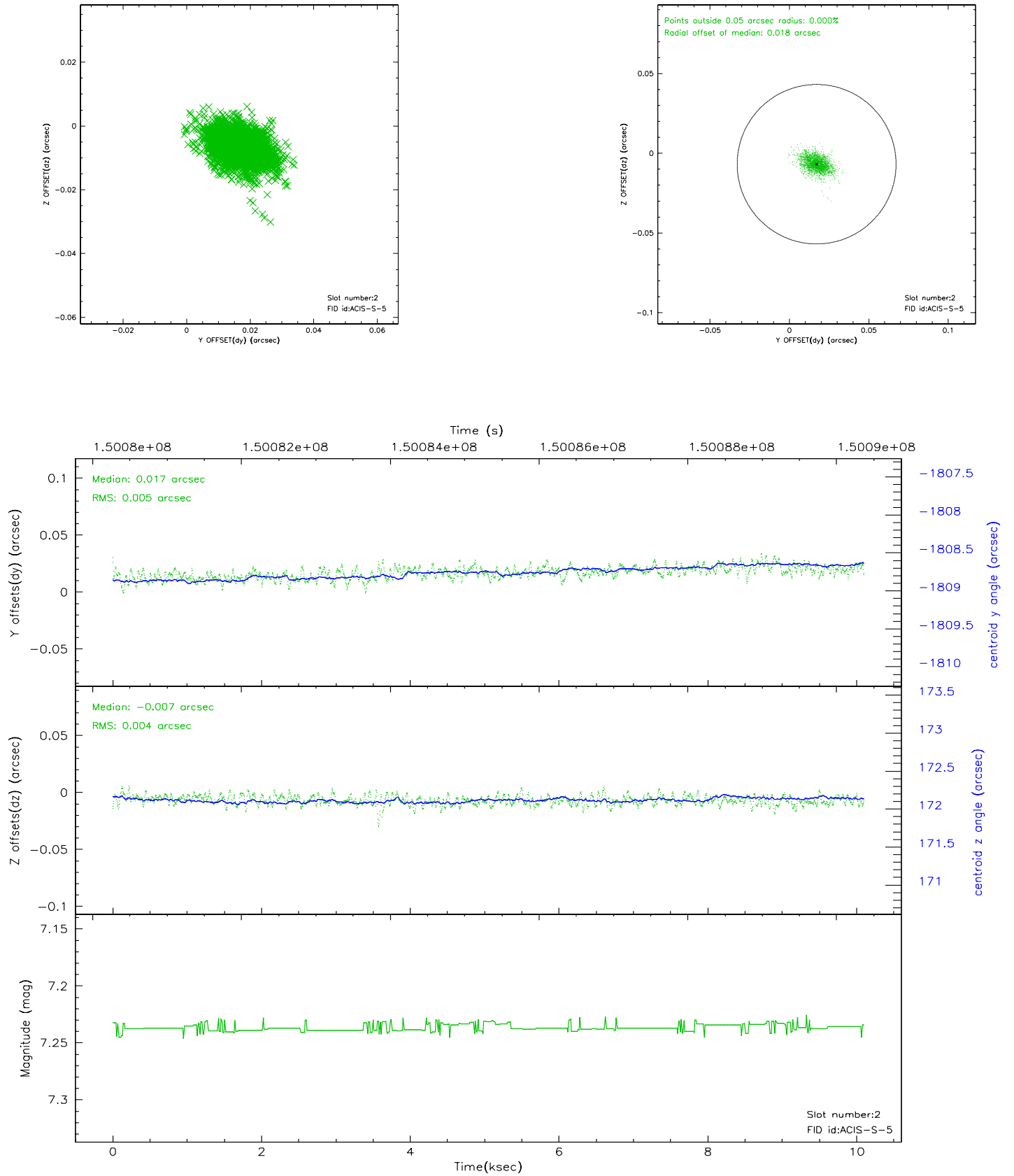
2.5.1 Slot 0



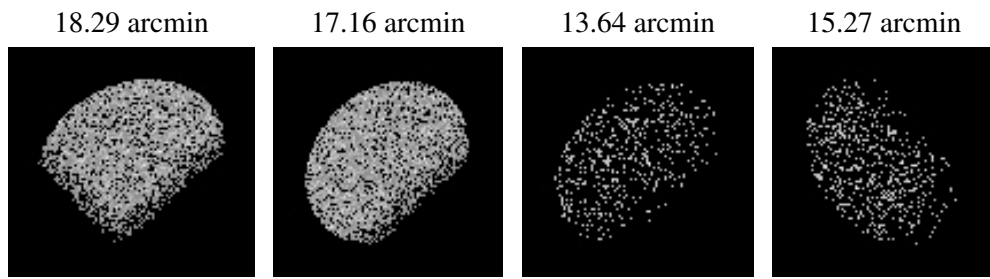
2.5.2 Slot 1



2.5.3 Slot 2



3 Point Sources



A Summary

A.1 Status

V&V Scientist	Jen Lauer
V&V Date (YYYY-MM-DD)	2006.10.06
V&V Edition	1
V&V Disposition and Status	OK
V&V Charge Time	9.984

A.2 Comments