

V&V Reference Report

L2 ASCDS Version : 8.4.5

Observation 3004 - L2 Version 4
Chandra X-Ray Center

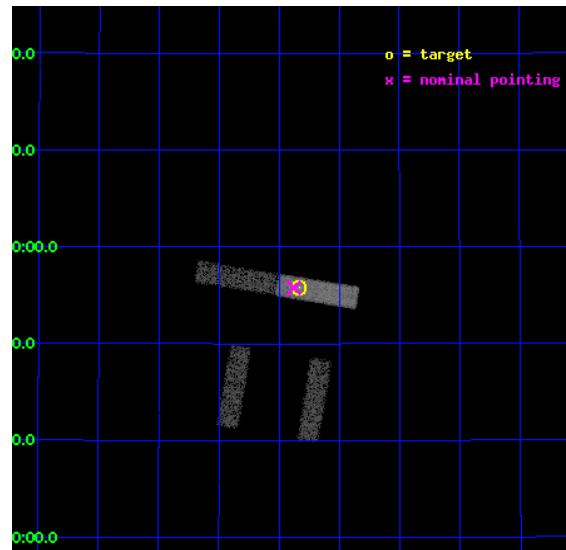
L2 Processing Date : Oct 16 2012

Contents

1	Front	2
2	OBI	3
2.1	OBI	3
2.1.1	Images	3
2.1.2	Bias	3
2.1.3	Parameters	4
2.1.4	Events	4
2.2	Compared Parameters	5
2.3	Aspect	6
2.4	Star Slots	9
2.4.1	Slot 3	9
2.4.2	Slot 4	10
2.4.3	Slot 5	11
2.4.4	Slot 6	12
2.4.5	Slot 7	13
2.5	FID Slots	14
2.5.1	Slot 0	14
2.5.2	Slot 1	15
2.5.3	Slot 2	16
A	Summary	17
A.1	Status	17
A.2	Comments	17

1 Front

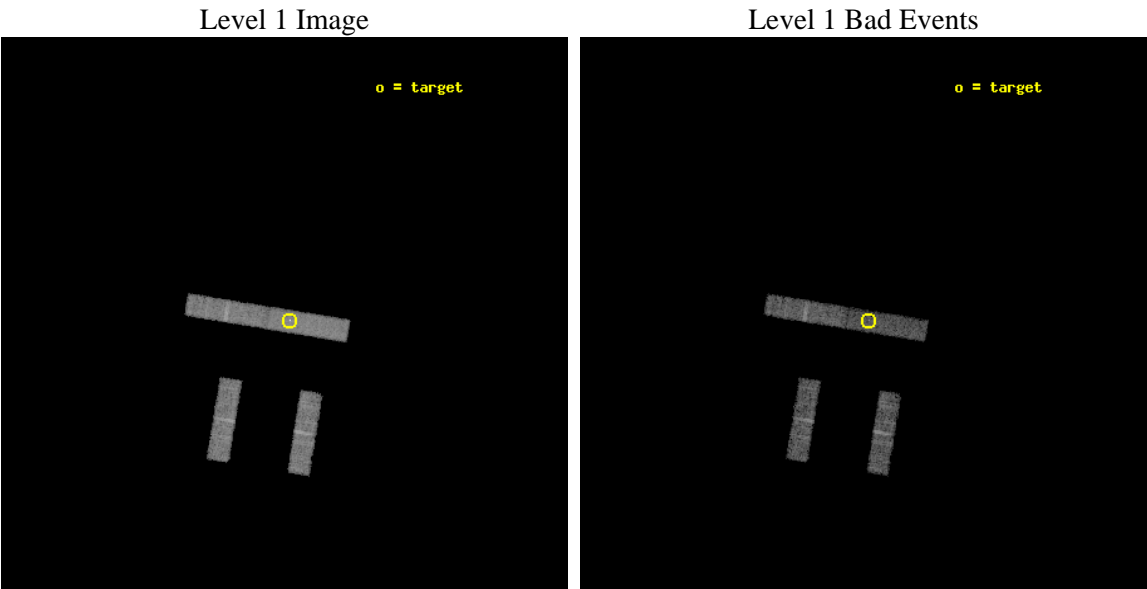
seq_num	700443	Sequence number
obs_id	3004	Observation id
title	CHANDRA SNAPSHOT OBSERVATIONS OF SOFT X-RAY TRANSIENT AGN	Proposal
observer	Dr Rick Edelson	Principal investigator
object	MRK 663	Source name
dtcycle	0	
cycle	P	events from which exps? Prim/Second/Both
ra_targ	208.582917	Observer's specified target RA [deg]
dec_targ	32.929722	Observer's specified target Dec [deg]
ra_nom	208.59447325795	Nominal RA [deg]
dec_nom	32.929580270195	Nominal Dec [deg]
roll_nom	9.3103929625623	Nominal Roll [deg]
revision	4	Processing version of data
ontime	9894.0	Sum of GTIs [s]
livetime	9503.9575808807	Livetime [s]
ontime2	9894.0	Sum of GTIs [s]
ontime3	9894.0	Sum of GTIs [s]
ontime6	9894.0	Sum of GTIs [s]
ontime7	9894.0	Sum of GTIs [s]
l2events	17410	Number of level 2 events



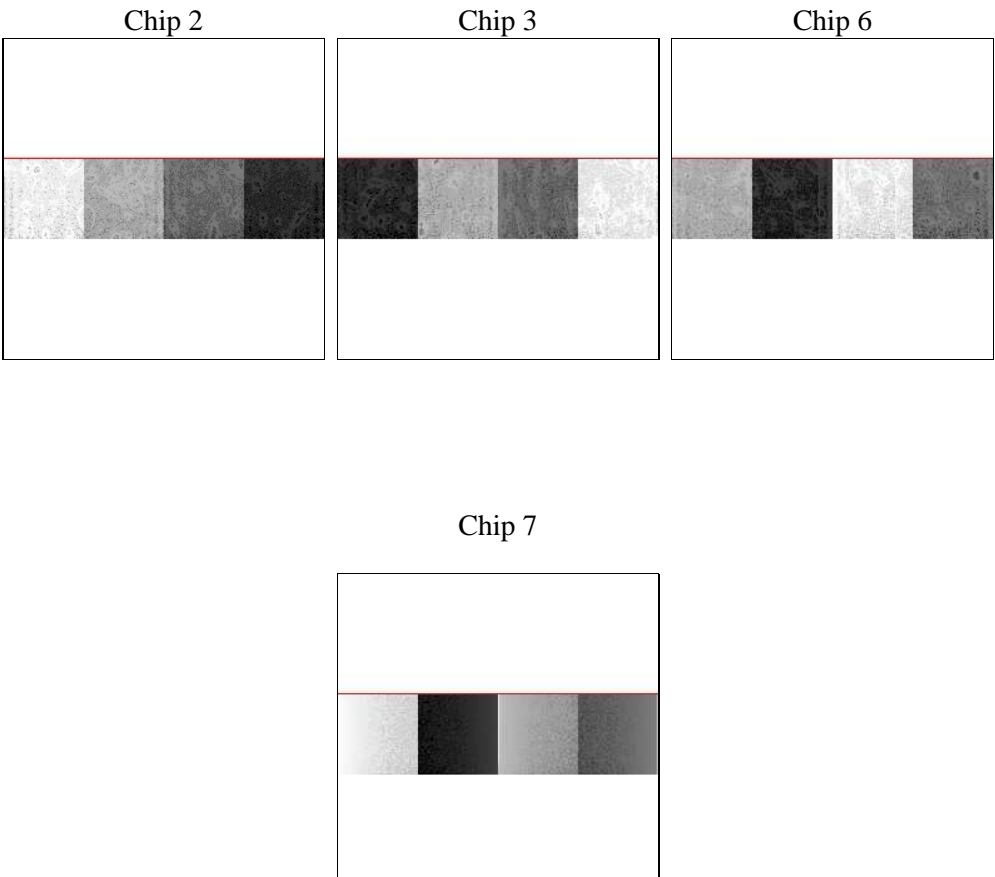
2 OBI

2.1 OBI

2.1.1 Images



2.1.2 Bias



Chip 7



2.1.3 Parameters

obi_num	2	Obi number	sched_exp_time	9750.000000	[s] Scheduled observation exposure time
ascdsver	8.4.5	Processing system revision	ontime	9894.0	Sum of GTIs [s]
caldsver	4.5.2	 	ontime2	9894.0	Sum of GTIs [s]
date	2012-10-17T00:05:52	Date and time of file creation	ontime3	9894.0	Sum of GTIs [s]
revision	4	Processing version of data	ontime6	9894.0	Sum of GTIs [s]
			ontime7	9894.0	Sum of GTIs [s]
			l1events	87130	Number of level 1 events

2.1.4 Events

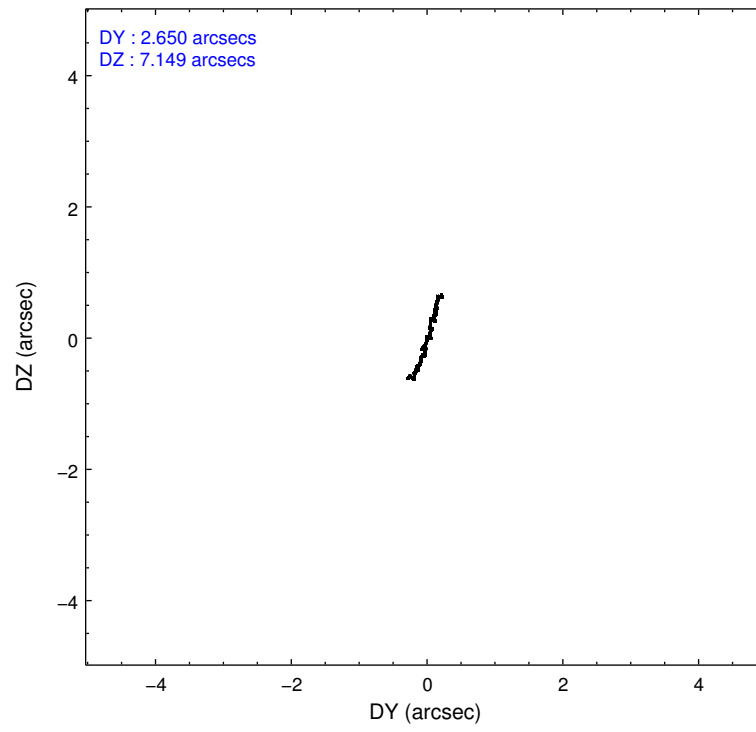
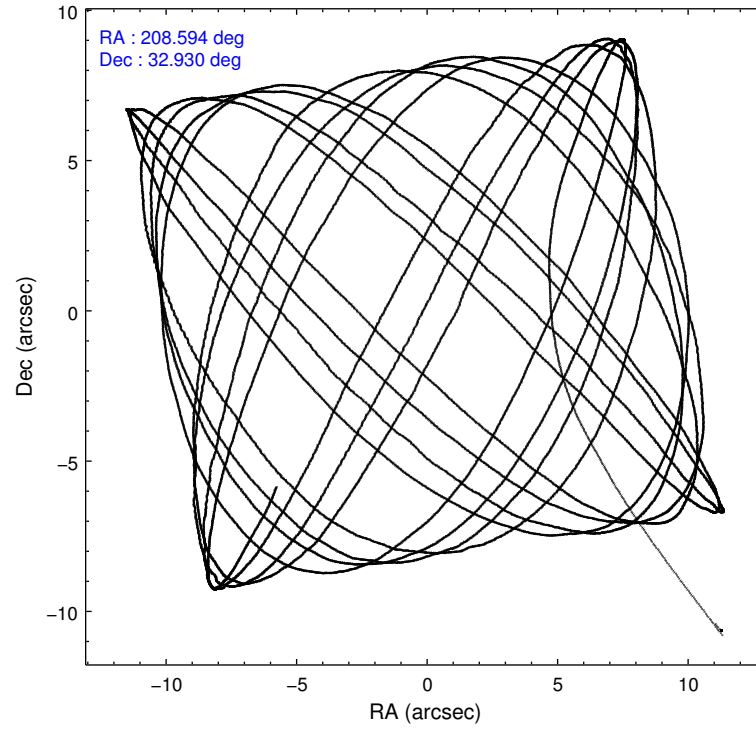
	ccd 2	ccd 3	ccd 6	ccd 7
level 1 events	19742	19924	21620	25844
rejected events	17461	17723	19337	13708
rejected %	88%	88%	89%	53%

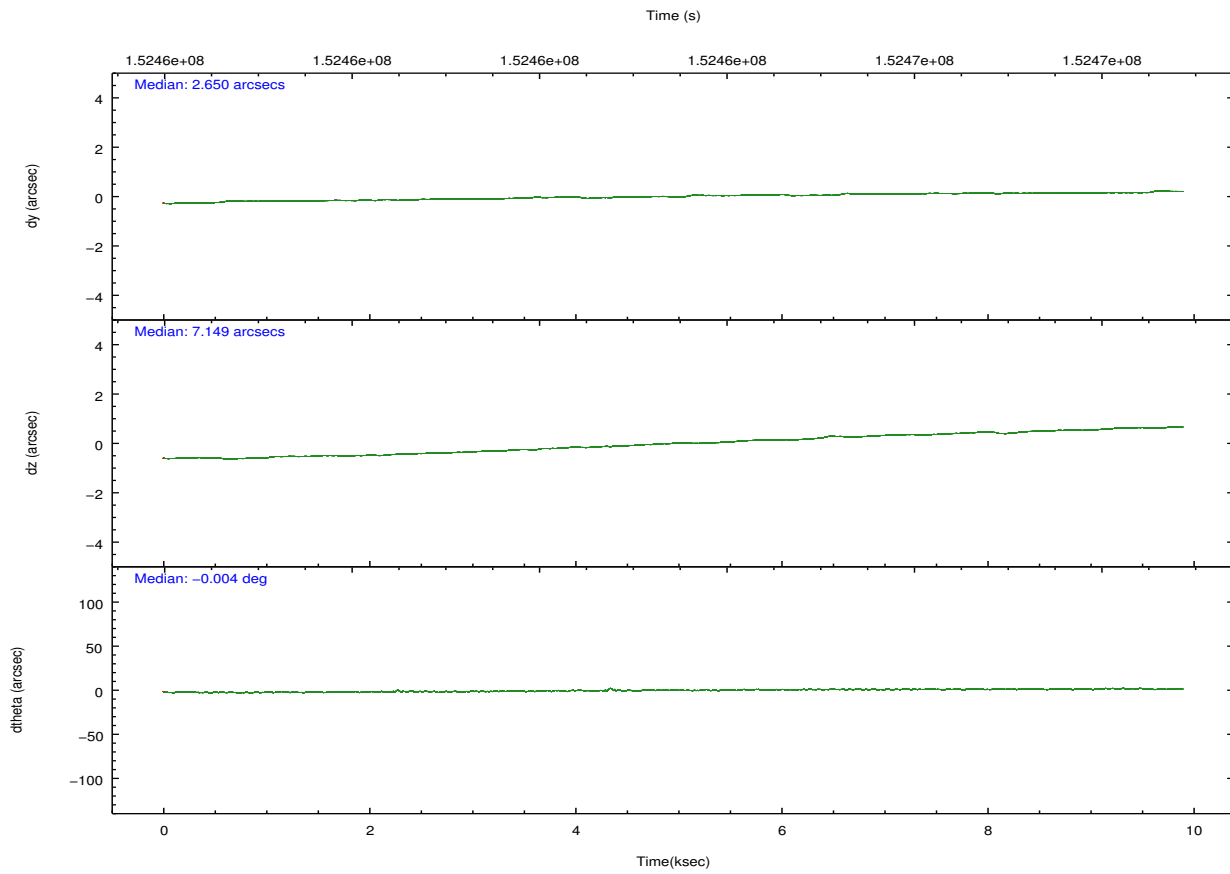
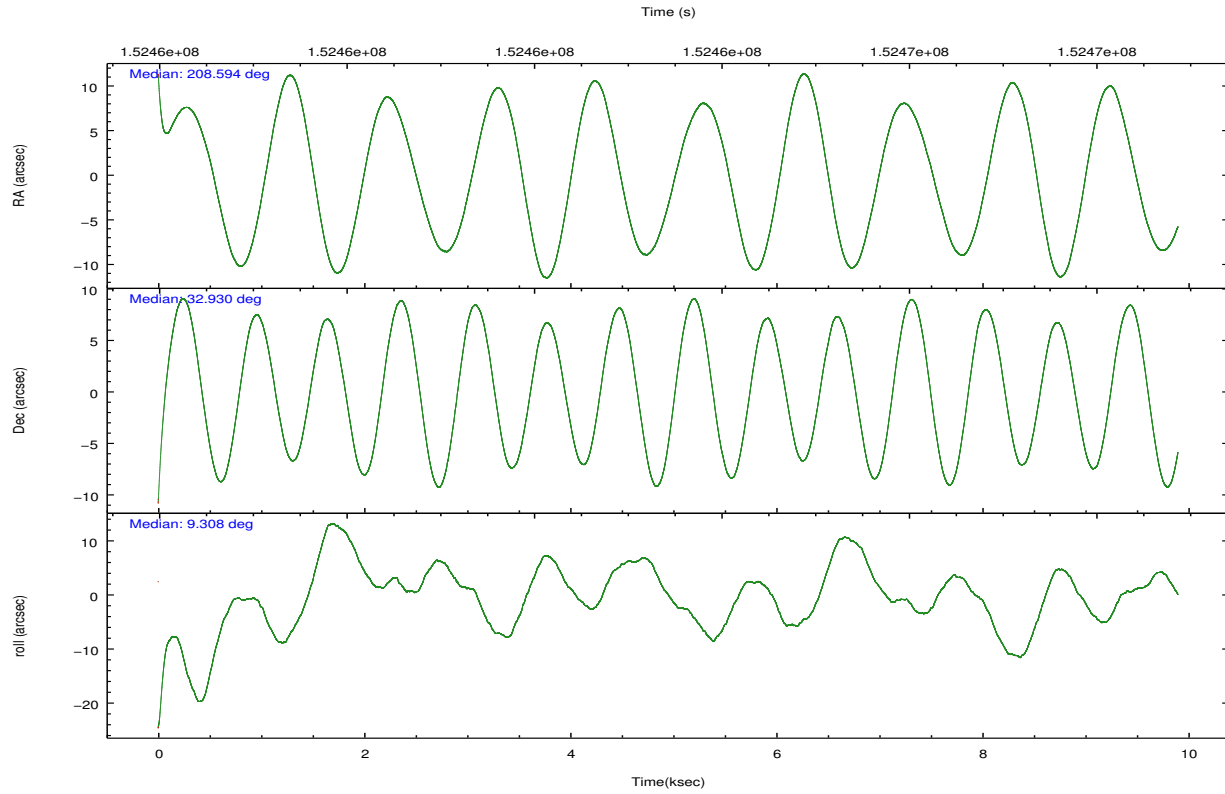
	ccd 2	ccd 3	ccd 6	ccd 7
grade 0 events	980	927	846	1779
	4%	4%	3%	6%
grade 1 events	8	5	6	39
	0%	0%	0%	0%
grade 2 events	445	408	425	2645
	2%	2%	1%	10%
grade 3 events	309	343	341	1373
	1%	1%	1%	5%
grade 4 events	325	299	377	1296
	1%	1%	1%	5%
grade 5 events	611	735	809	2160
	3%	3%	3%	8%
grade 6 events	358	360	440	5778
	1%	1%	2%	22%
grade 7 events	16706	16847	18376	10774
	84%	84%	84%	41%

2.2 Compared Parameters

Parameter	Planned	Actual	Parameter	Planned	Actual
Instrument	ACIS	ACIS	Obspar format version number	7	7
Detector	ACIS-2367	ACIS-2367	Obspar file type	PREDICTED	ACTUAL
Grating	NONE	NONE	Obspar update status	NONE	UPDATED
Data mode	FAINT	FAINT	Number of optional ACIS chips dropped	0	0
Observation mode	POINTING	POINTING	On-chip summing requested	N	N
[deg] Pointing RA	208.569630	208.5944732579504	Subarray requested	CUSTOM	1/4
[deg] Pointing Dec	32.912052	32.92958027019522	Subarray start row	385	385
[deg] Pointing Roll	9.167281	9.310392962562265	Subarray row count	256	256
[mm] SIM focus pos	-0.684267	-0.6828225247311905	Alternating exposures requested	N	N
[mm] SIM defocus	0	0.001444936568705701	[s] Primary exposure time	0.000000	1
[mm] SIM translation stage pos	-190.132523	-190.1425803651734			
[mm] SIM translation stage offset	0	0.01005778216563158			
[s] Observation start time (MET)	152458621.184000	152457605.12102			
Observation start date	2002-10-31T13:35:57	2002-10-31T13:20:05			
[s] Observation end time (MET)	152468371.184000	152468505.48398			
Observation end date	2002-10-31T16:18:27	2002-10-31T16:21:45			
Read mode	TIMED	TIMED			

2.3 Aspect



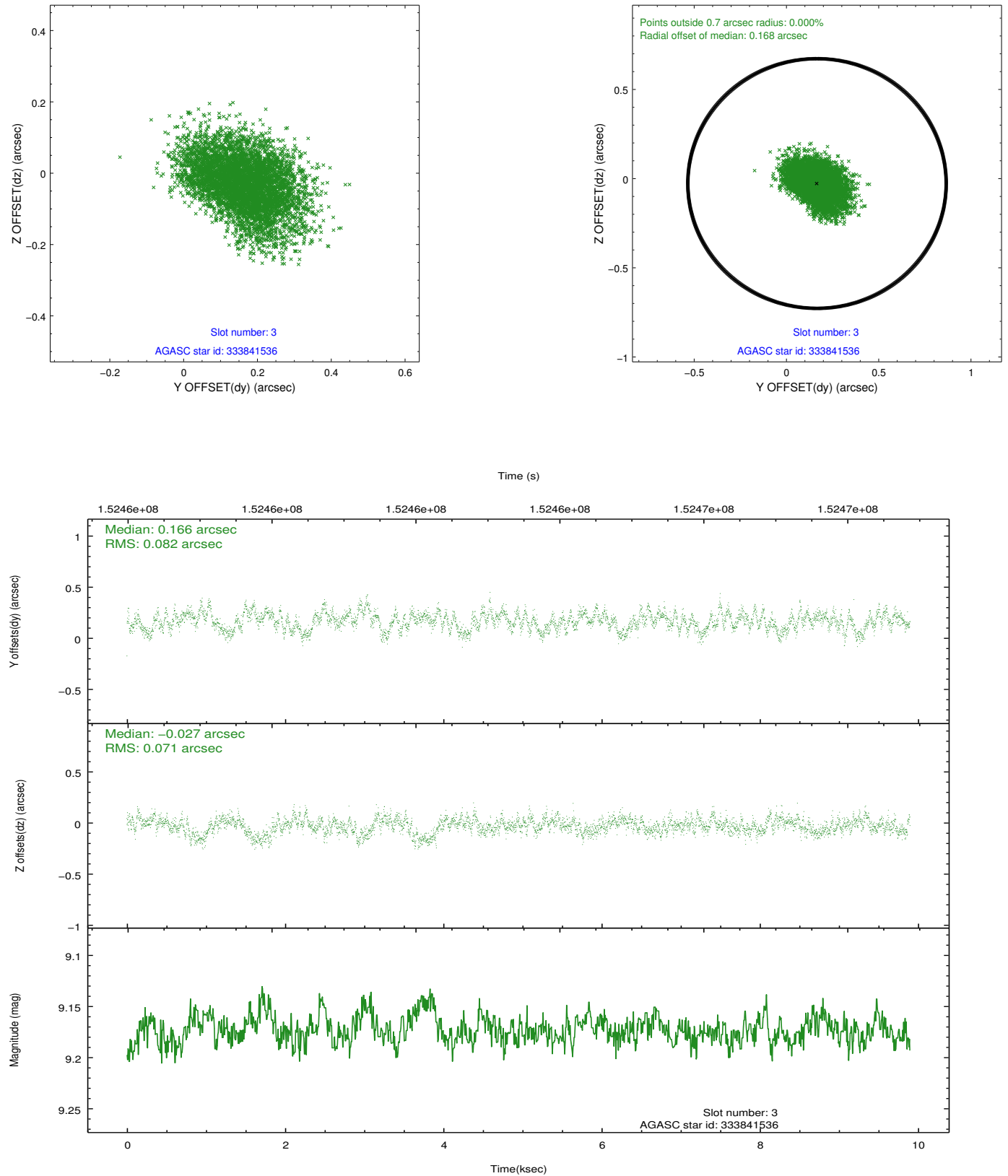


Slot Statistics

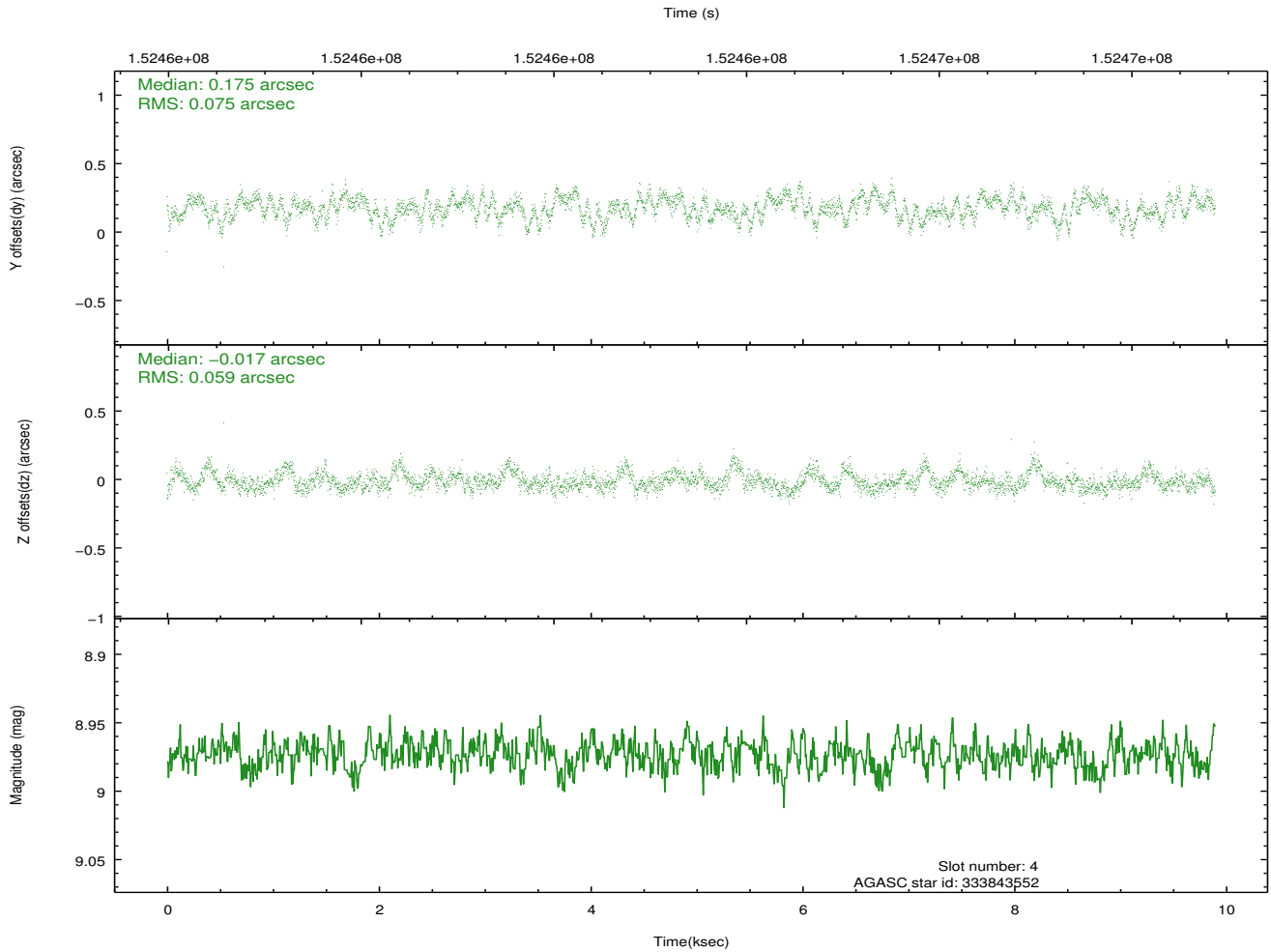
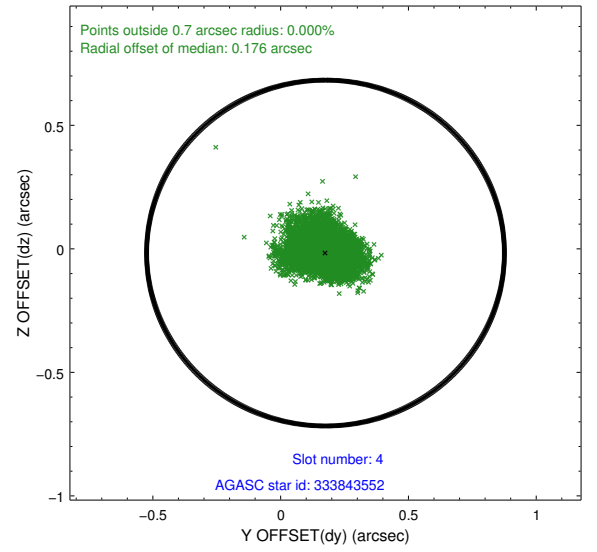
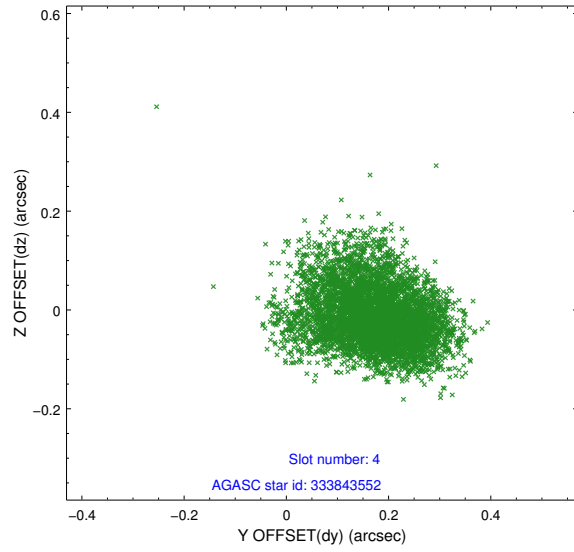
slot	status	id	mag	n_pts	med_dy	med_dz	dr1	dr2	ra	dec	mean_y	mean_z
0	FID	ACIS-S-2	7.11	2414	-0.016	0.007	0.014	0.020	0.000000	0.000000	-755.29	-1728.25
1	FID	ACIS-S-4	7.20	2415	-0.023	0.006	0.008	0.012	0.000000	0.000000	2157.74	179.69
2	FID	ACIS-S-5	7.24	2414	0.008	-0.004	0.016	0.023	0.000000	0.000000	-1807.42	173.95
3	GUIDE	333841536	9.17	4823	0.166	-0.027	0.115	0.190	207.736517	33.263675	-2271.39	1658.91
4	GUIDE	333843552	8.97	4827	0.175	-0.017	0.102	0.168	207.943128	33.286944	-1644.77	1638.58
5	GUIDE	333843816	9.56	4824	0.073	-0.210	0.099	0.166	208.078015	32.856933	-1497.95	44.40
6	GUIDE	333848960	10.13	4822	-0.205	0.102	0.261	0.394	208.878999	32.756079	836.02	-702.09
7	GUIDE	333848744	8.92	4827	-0.205	0.156	0.113	0.177	209.384333	32.808665	2376.81	-750.75

2.4 Star Slots

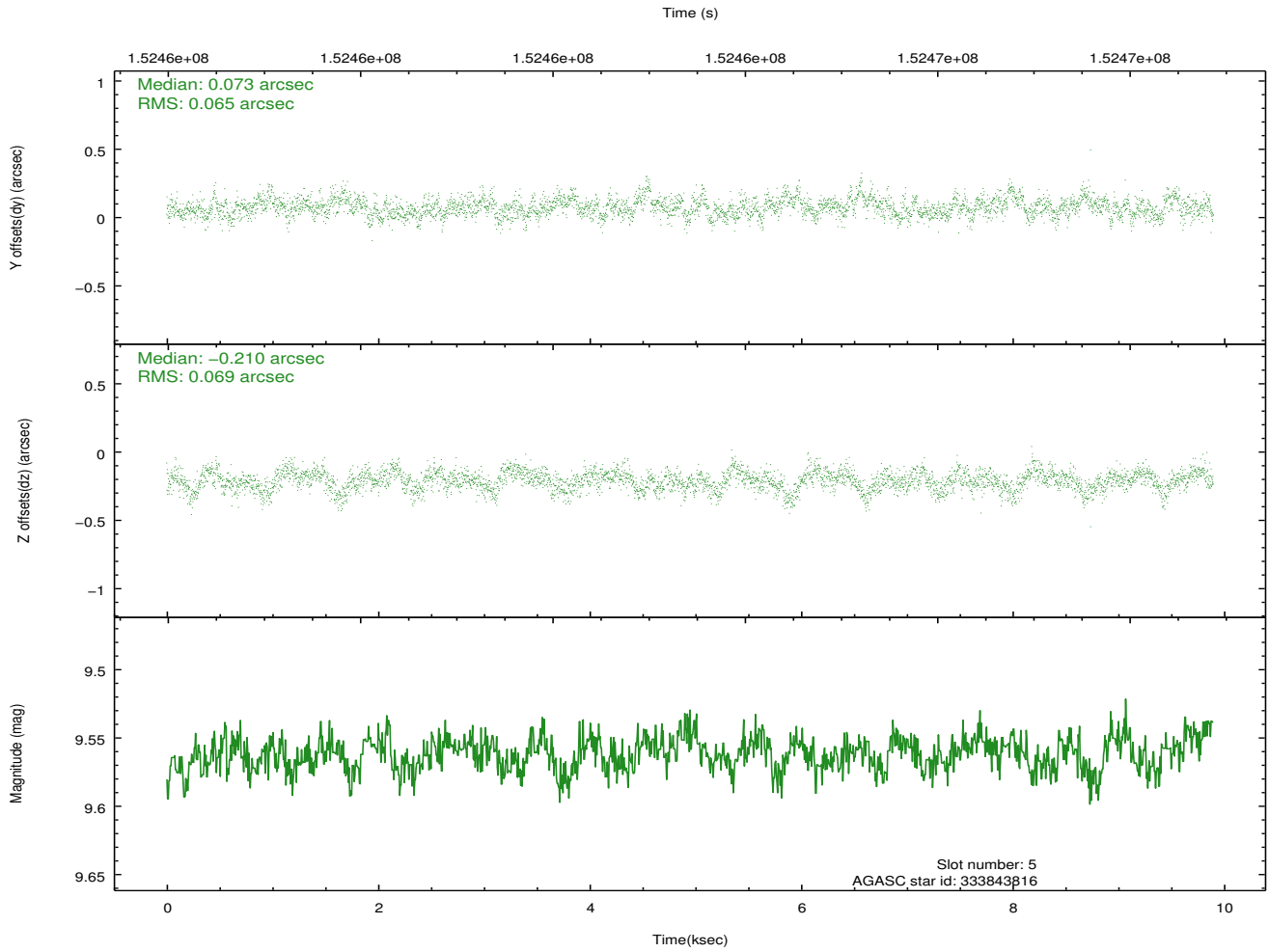
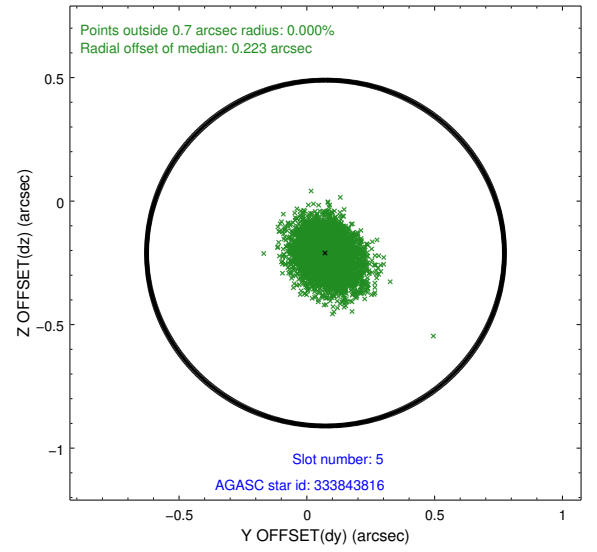
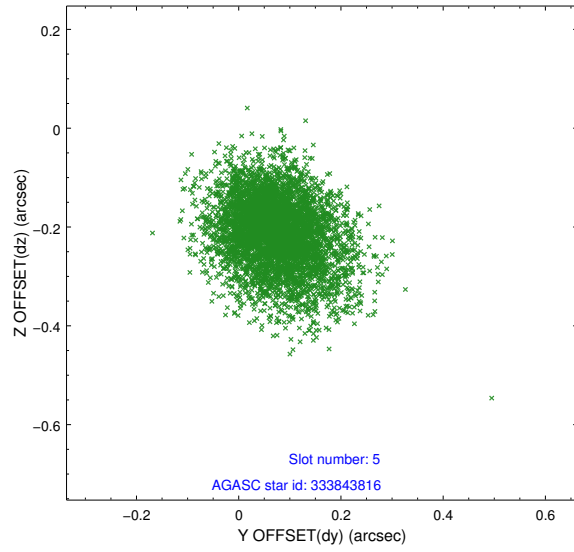
2.4.1 Slot 3



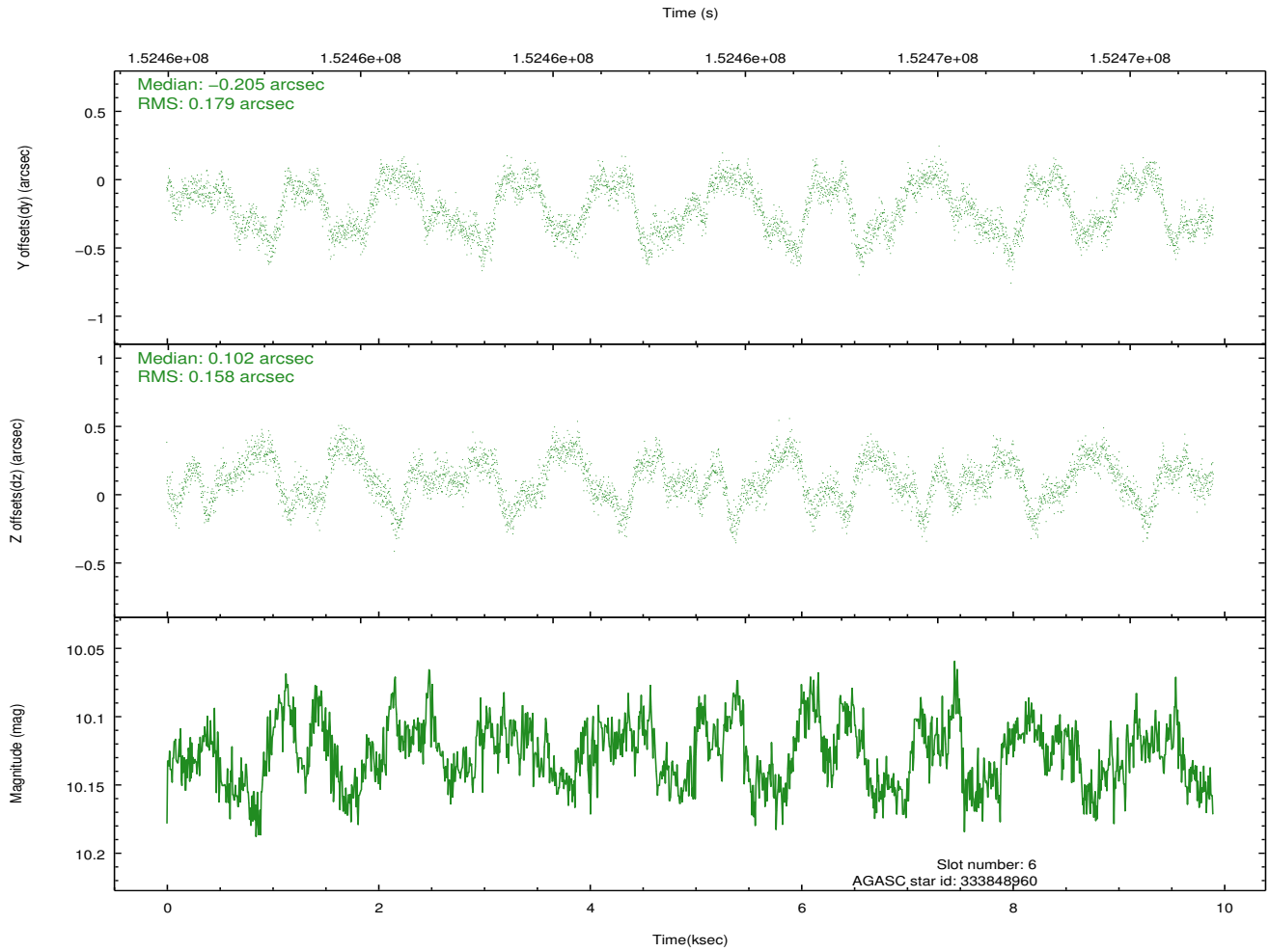
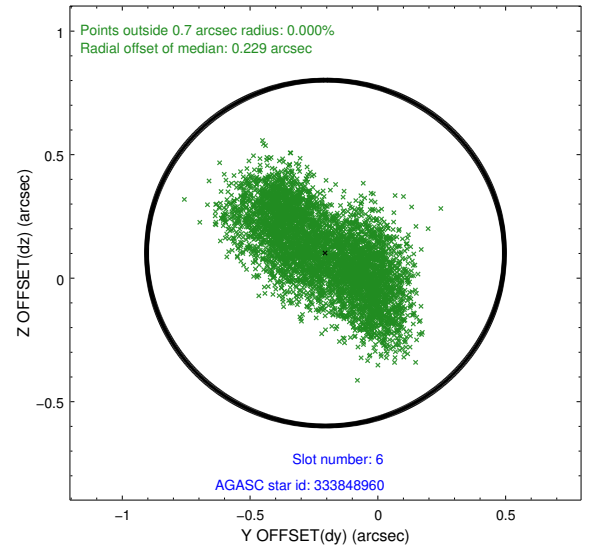
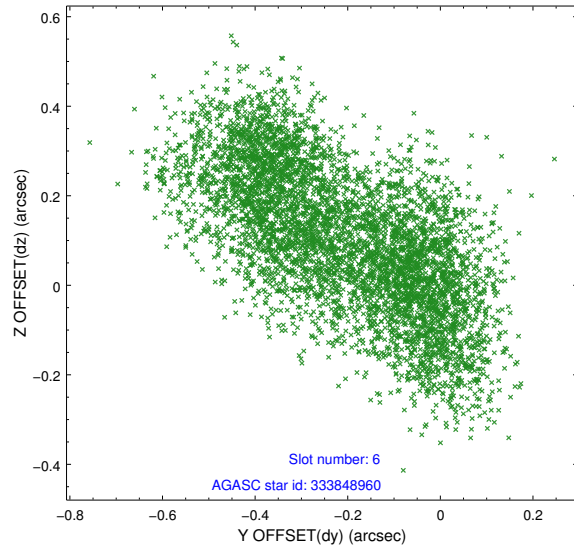
2.4.2 Slot 4



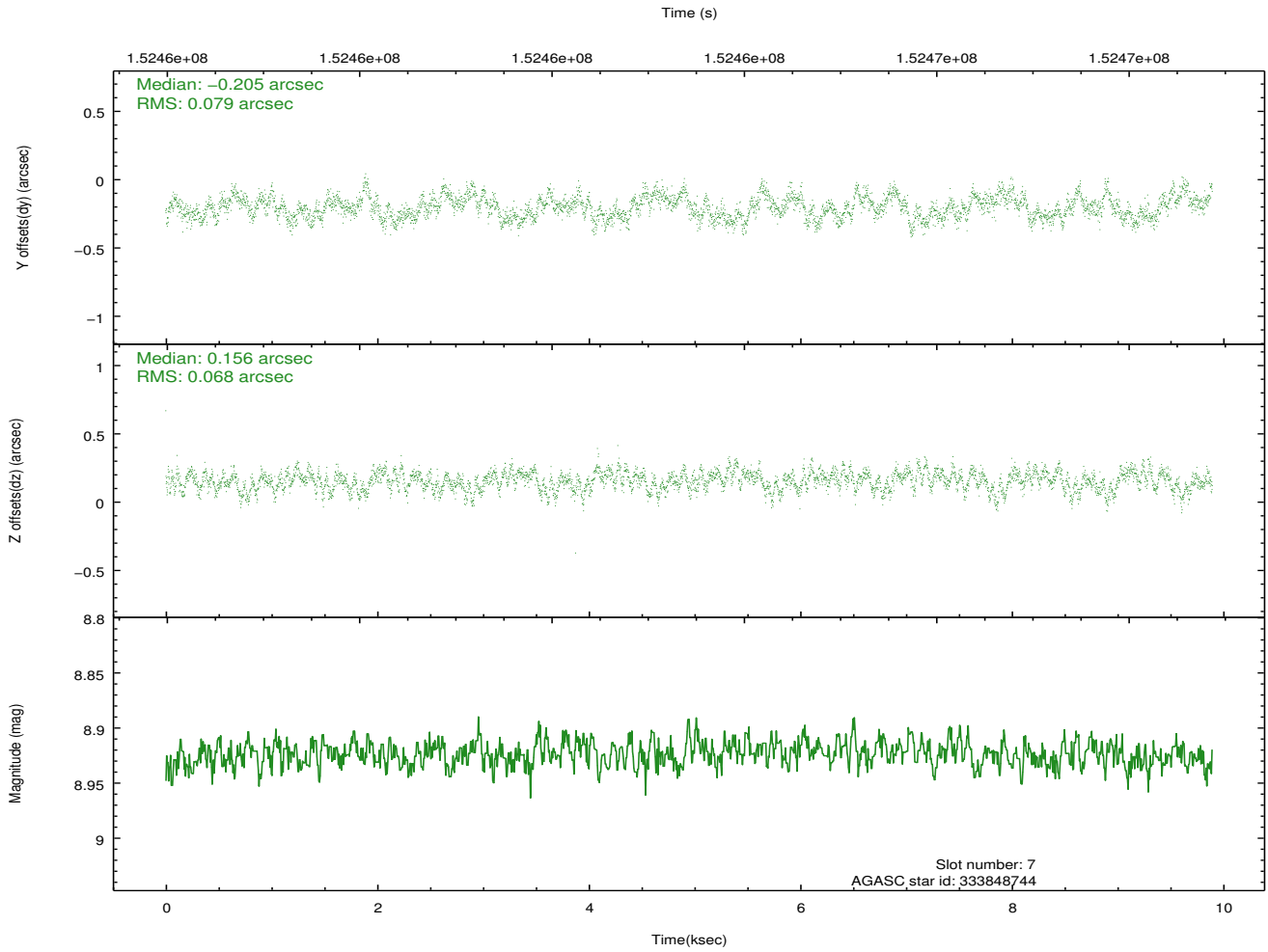
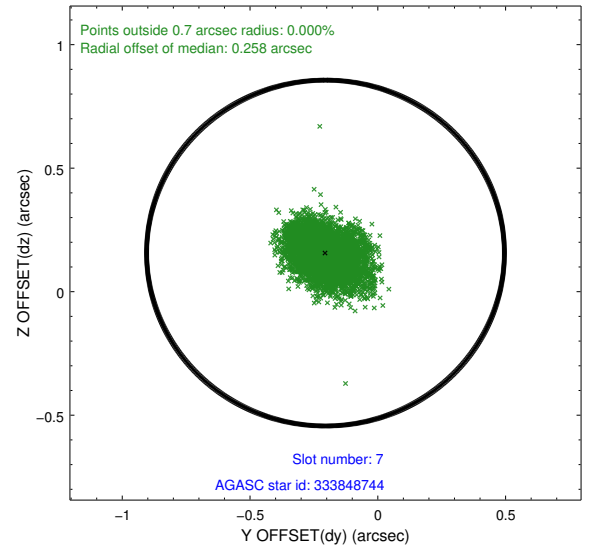
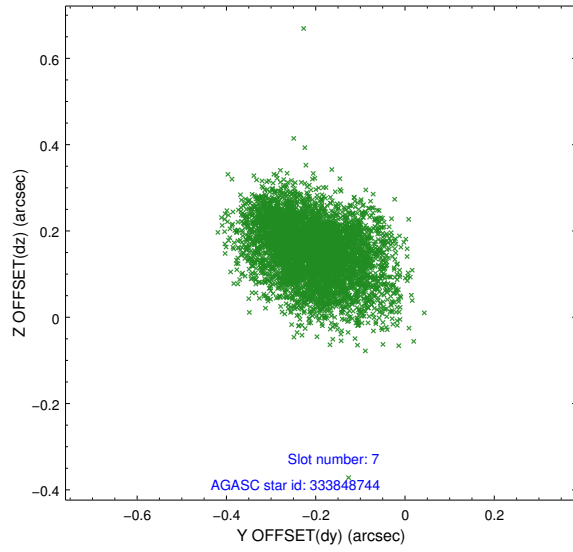
2.4.3 Slot 5



2.4.4 Slot 6

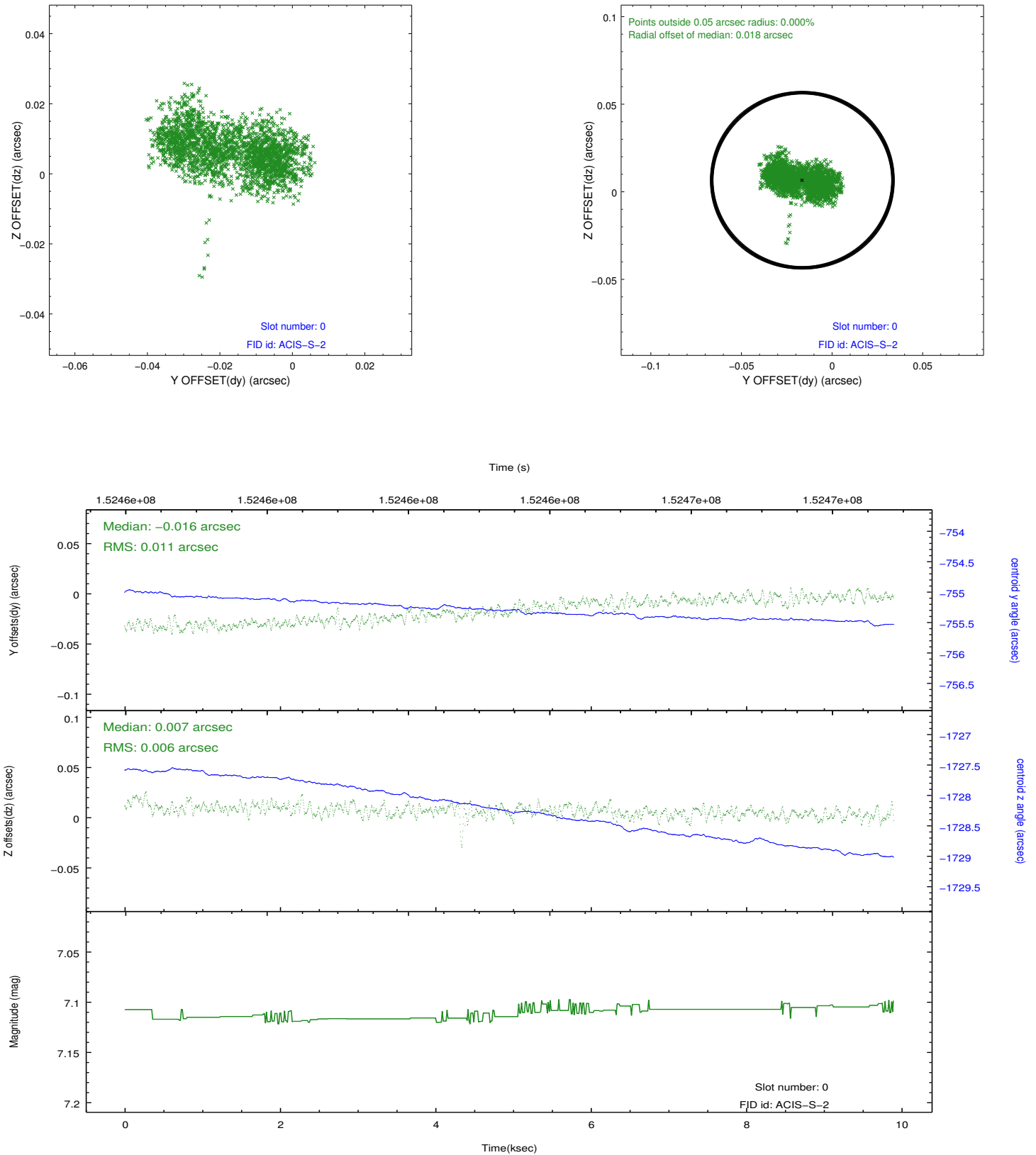


2.4.5 Slot 7

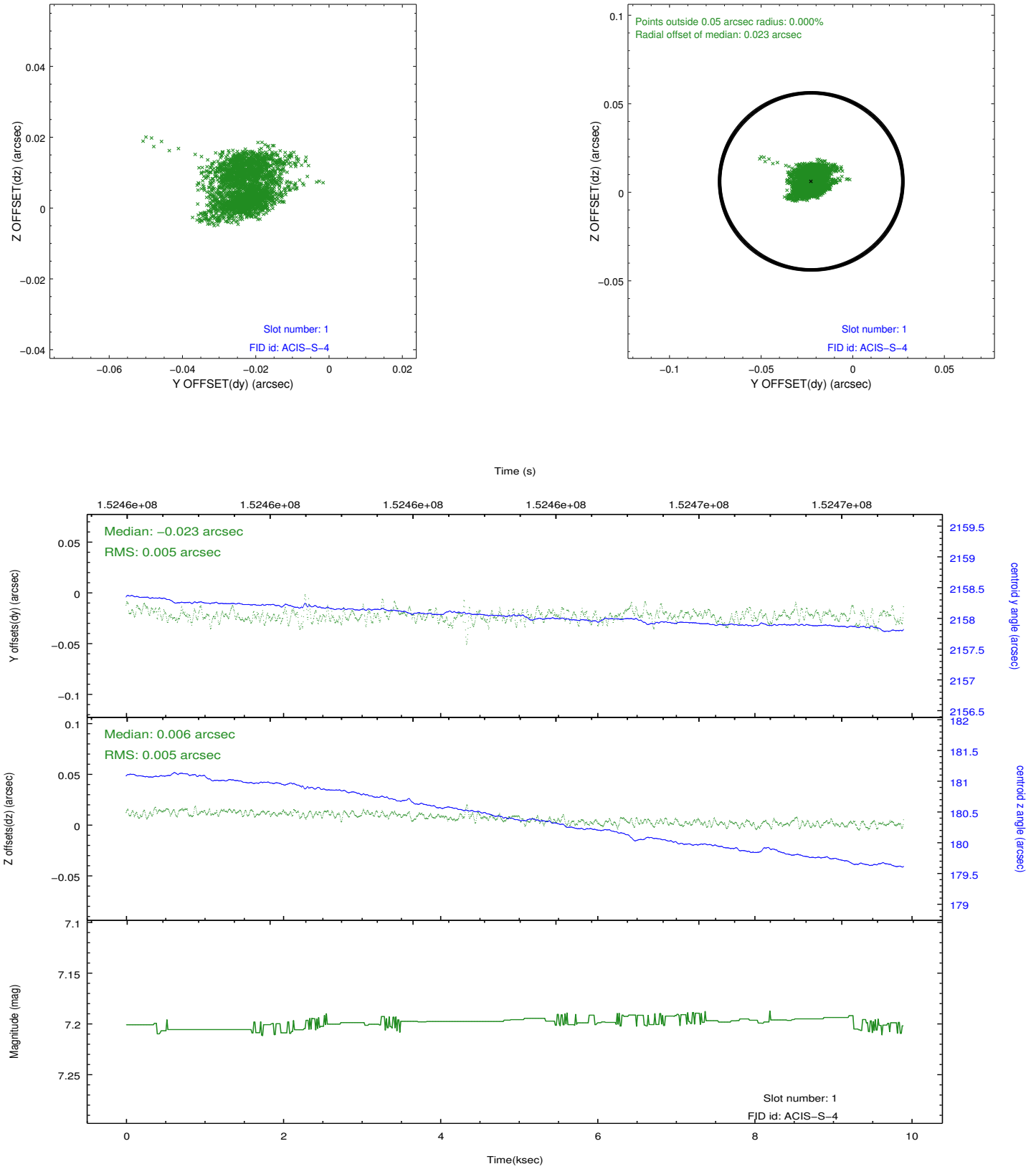


2.5 FID Slots

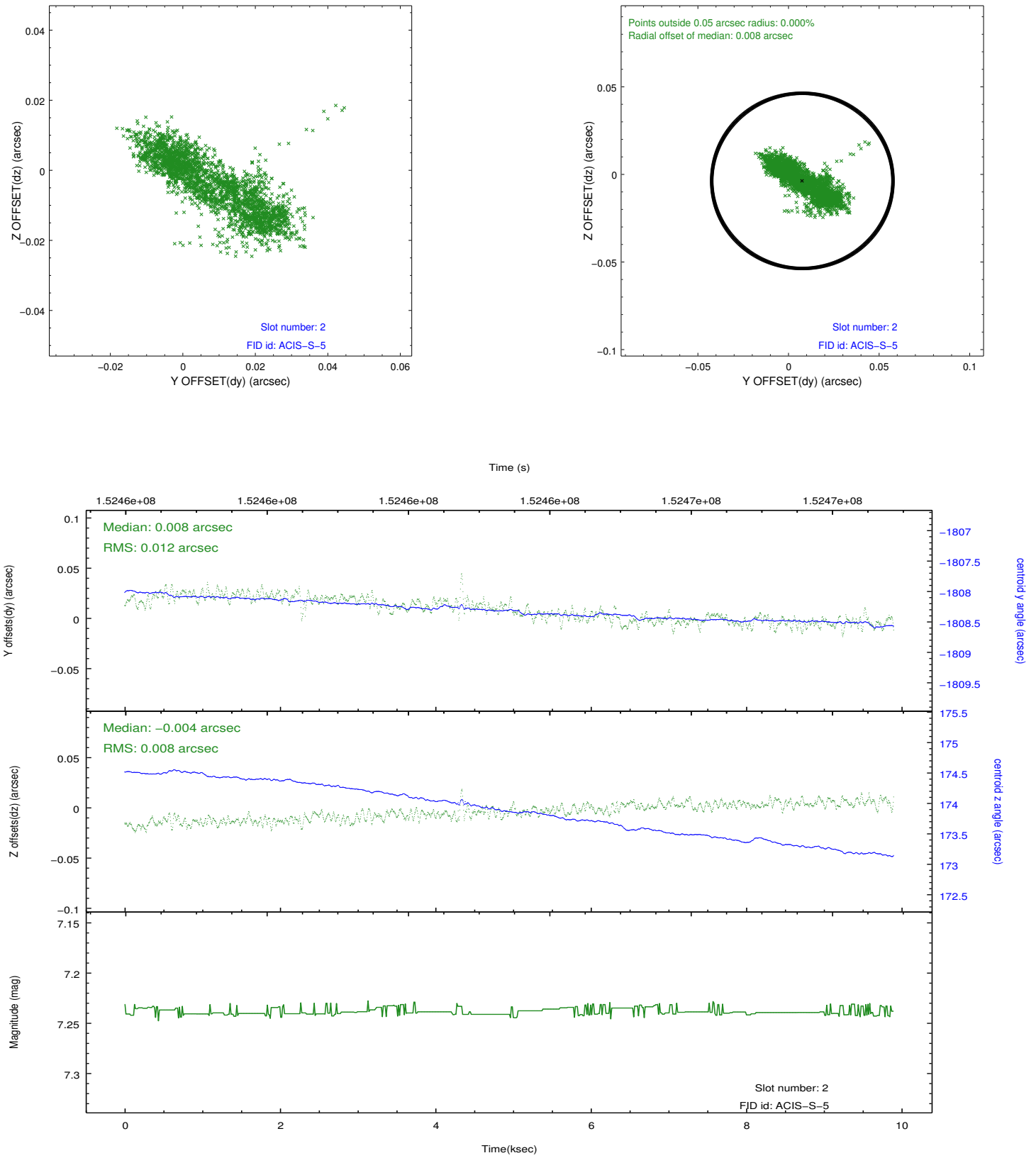
2.5.1 Slot 0



2.5.2 Slot 1



2.5.3 Slot 2



A Summary

A.1 Status

V&V Scientist	Beth Sundheim
V&V Date (YYYY-MM-DD)	2012.10.25
V&V Edition	1
V&V Disposition and Status	OK
V&V Charge Time	9.894

A.2 Comments