

V&V Reference Report

L2 ASCDS Version : 8.4.5

Observation 2999 - L2 Version 3
Chandra X-Ray Center

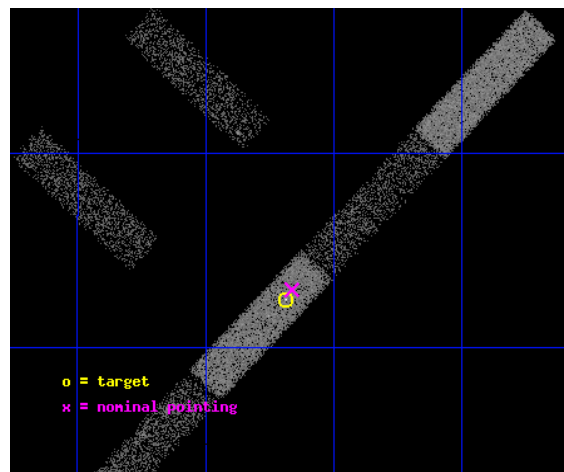
L2 Processing Date : Oct 3 2012

Contents

1	Front	2
2	OBI	3
2.1	OBI	3
2.1.1	Images	3
2.1.2	Bias	3
2.1.3	Parameters	4
2.1.4	Events	4
2.2	Compared Parameters	5
2.3	Aspect	6
2.4	Star Slots	9
2.4.1	Slot 3	9
2.4.2	Slot 4	10
2.4.3	Slot 5	11
2.4.4	Slot 6	12
2.4.5	Slot 7	13
2.5	FID Slots	14
2.5.1	Slot 0	14
2.5.2	Slot 1	15
2.5.3	Slot 2	16
A	Summary	17
A.1	Status	17
A.2	Comments	17

1 Front

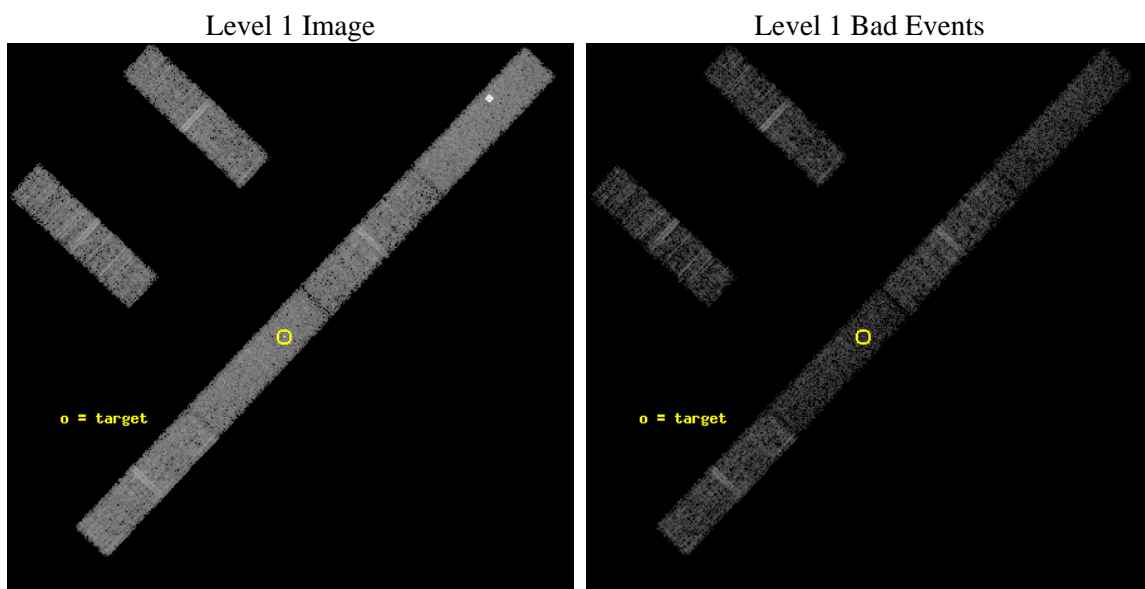
seq_num	700438	Sequence number
obs_id	2999	Observation id
title	CHANDRA SNAPSHOT OBSERVATIONS OF SOFT X-RAY TRANSIENT AGN	Proposal
observer	Dr Rick Edelson	Principal investigator
object	IC 3599	Source name
dtcycle	0	
cycle	P	events from which exps? Prim/Second/Both
ra_targ	189.421667	Observer's specified target RA [deg]
dec_targ	26.708056	Observer's specified target Dec [deg]
ra_nom	189.41574976028	Nominal RA [deg]
dec_nom	26.716205758345	Nominal Dec [deg]
roll_nom	133.29224862011	Nominal Roll [deg]
revision	3	Processing version of data
ontime	10552.938211679	Sum of GTIs [s]
livetime	10173.378700876	Livetime [s]
ontime2	10552.979251683	Sum of GTIs [s]
ontime3	10552.815091684	Sum of GTIs [s]
ontime5	10552.897171676	Sum of GTIs [s]
ontime6	10552.856131688	Sum of GTIs [s]
ontime7	10552.938211679	Sum of GTIs [s]
ontime8	10552.774051681	Sum of GTIs [s]
l2events	30227	Number of level 2 events



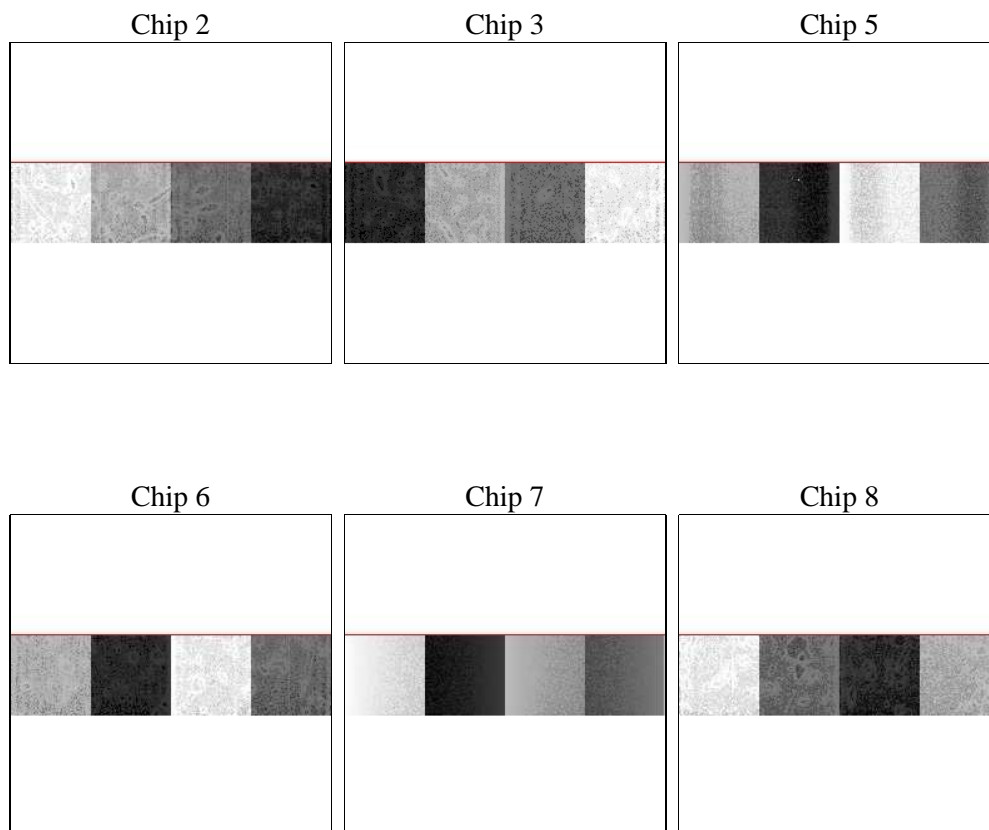
2 OBI

2.1 OBI

2.1.1 Images



2.1.2 Bias



2.1.3 Parameters

obi_num	1	Obi number	sched_exp_time	10000.000000	[s] Scheduled observation exposure time
ascdsver	8.4.5	Processing system revision	ontime	10552.938211679	Sum of GTIs [s]
caldsver	4.5.2	 	ontime2	10552.979251683	Sum of GTIs [s]
date	2012-10-03T03:40:20	Date and time of file creation	ontime3	10552.815091684	Sum of GTIs [s]
revision	3	Processing version of data	ontime5	10552.897171676	Sum of GTIs [s]
			ontime6	10552.856131688	Sum of GTIs [s]
			ontime7	10552.938211679	Sum of GTIs [s]
			ontime8	10552.774051681	Sum of GTIs [s]
			l1events	157748	Number of level 1 events

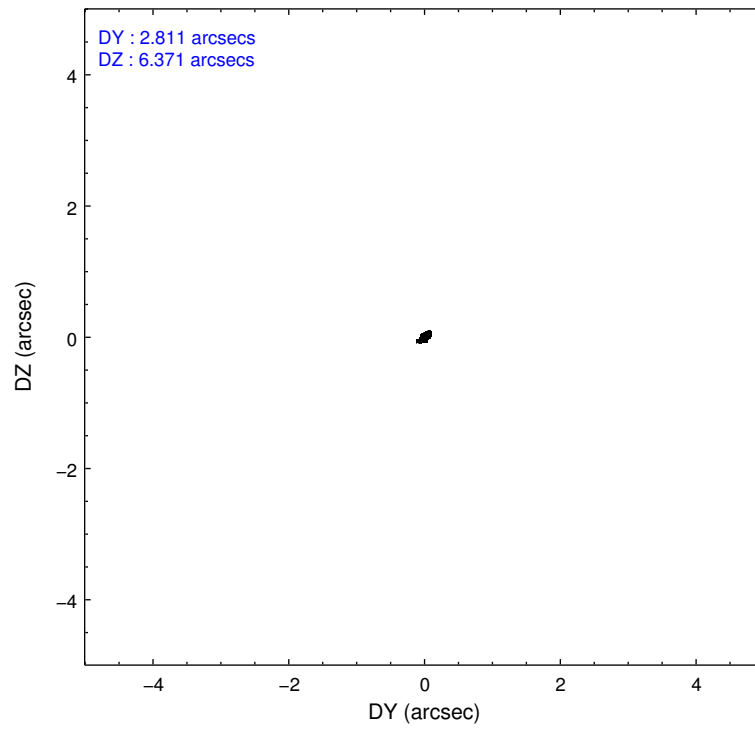
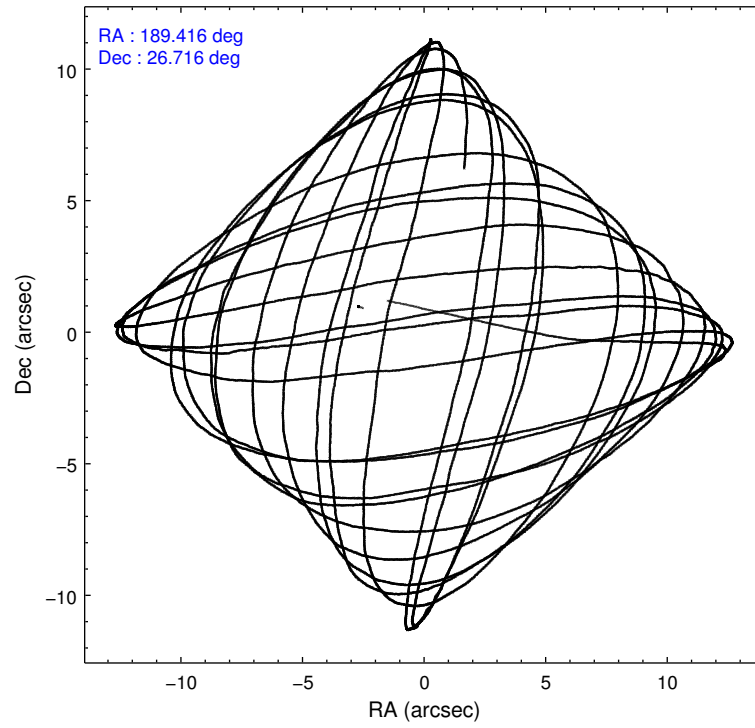
2.1.4 Events

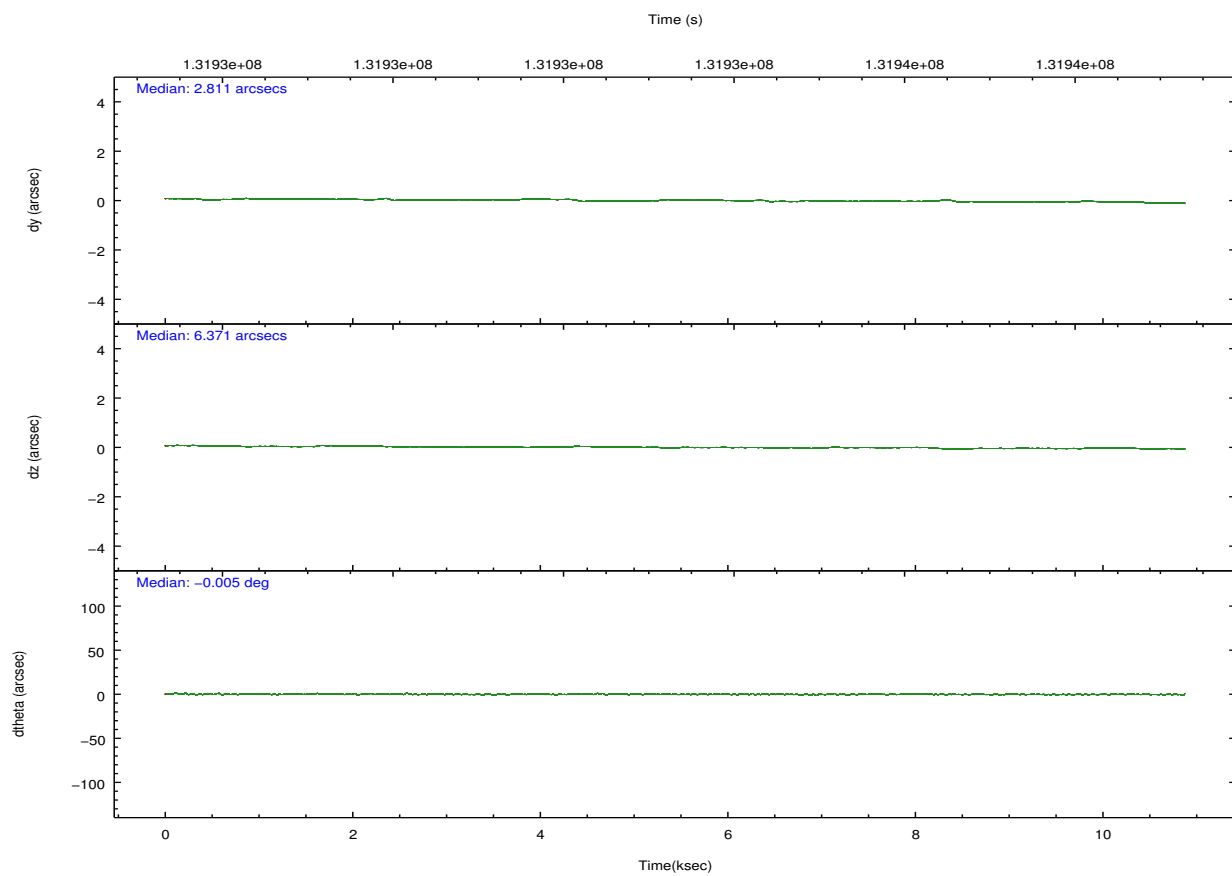
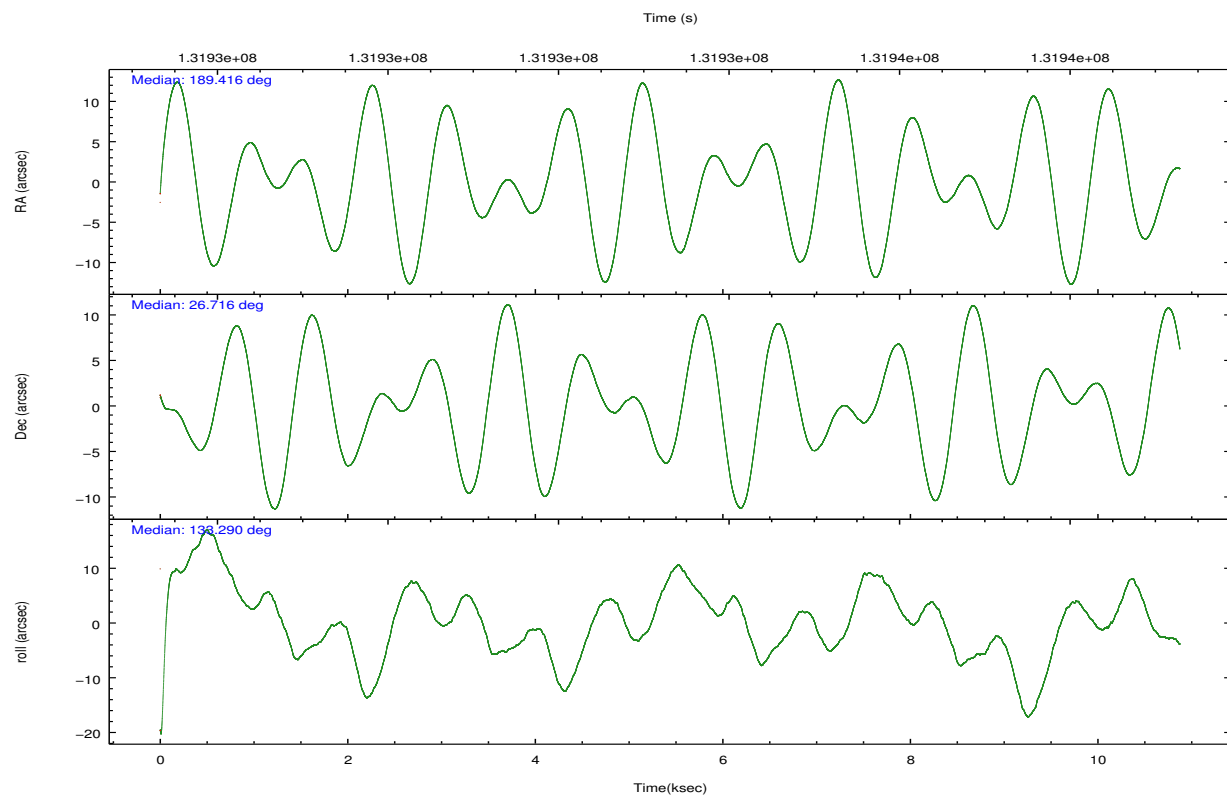
	ccd 2	ccd 3	ccd 5	ccd 6	ccd 7	ccd 8		ccd 2	ccd 3	ccd 5	ccd 6	ccd 7	ccd 8
level 1 events	23440	22153	35097	23170	25190	28698	grade 0 events	883	865	9520	815	1324	1684
rejected events	20997	19853	14437	20757	14295	23343		3%	3%	27%	3%	5%	5%
rejected %	89%	89%	41%	89%	56%	81%	grade 1 events	5	5	43	9	24	6
								0%	0%	0%	0%	0%	0%
							grade 2 events	466	430	3506	445	2185	988
								1%	1%	9%	1%	8%	3%
							grade 3 events	340	336	776	327	1146	634
								1%	1%	2%	1%	4%	2%
							grade 4 events	314	292	699	357	1077	569
								1%	1%	1%	1%	4%	1%
							grade 5 events	664	729	2209	799	2378	998
								2%	3%	6%	3%	9%	3%
							grade 6 events	440	377	6160	469	5163	1480
								1%	1%	17%	2%	20%	5%
							grade 7 events	20328	19119	12184	19949	11893	22339
								86%	86%	34%	86%	47%	77%

2.2 Compared Parameters

Parameter	Planned	Actual	Parameter	Planned	Actual
Instrument	ACIS	ACIS	Obspar format version number	7	7
Detector	ACIS-235678	ACIS-235678	Obspar file type	PREDICTED	ACTUAL
Grating	NONE	NONE	Obspar update status	NONE	UPDATED
Data mode	FAINT	FAINT	Number of optional ACIS chips dropped	0	0
Observation mode	POINTING	POINTING	On-chip summing requested	N	N
[deg] Pointing RA	189.445053	189.4157497602812	Subarray requested	CUSTOM	1/4
[deg] Pointing Dec	26.708670	26.71620575834531	Subarray start row	385	385
[deg] Pointing Roll	133.122487	133.2922486201145	Subarray row count	256	256
[mm] SIM focus pos	-0.684267	-0.6828225247311905	Alternating exposures requested	N	N
[mm] SIM defocus	0	0.001444936568705701	[s] Primary exposure time	0.000000	1.1
[mm] SIM translation stage pos	-190.132523	-190.1400660498719			
[mm] SIM translation stage offset	0	0.00754346686406393			
[s] Observation start time (MET)	131928747.184000	131927445.70403			
Observation start date	2002-03-07T22:51:23	2002-03-07T22:30:45			
[s] Observation end time (MET)	131938747.184000	131939145.0545			
Observation end date	2002-03-08T01:38:03	2002-03-08T01:45:45			
Read mode	TIMED	TIMED			

2.3 Aspect



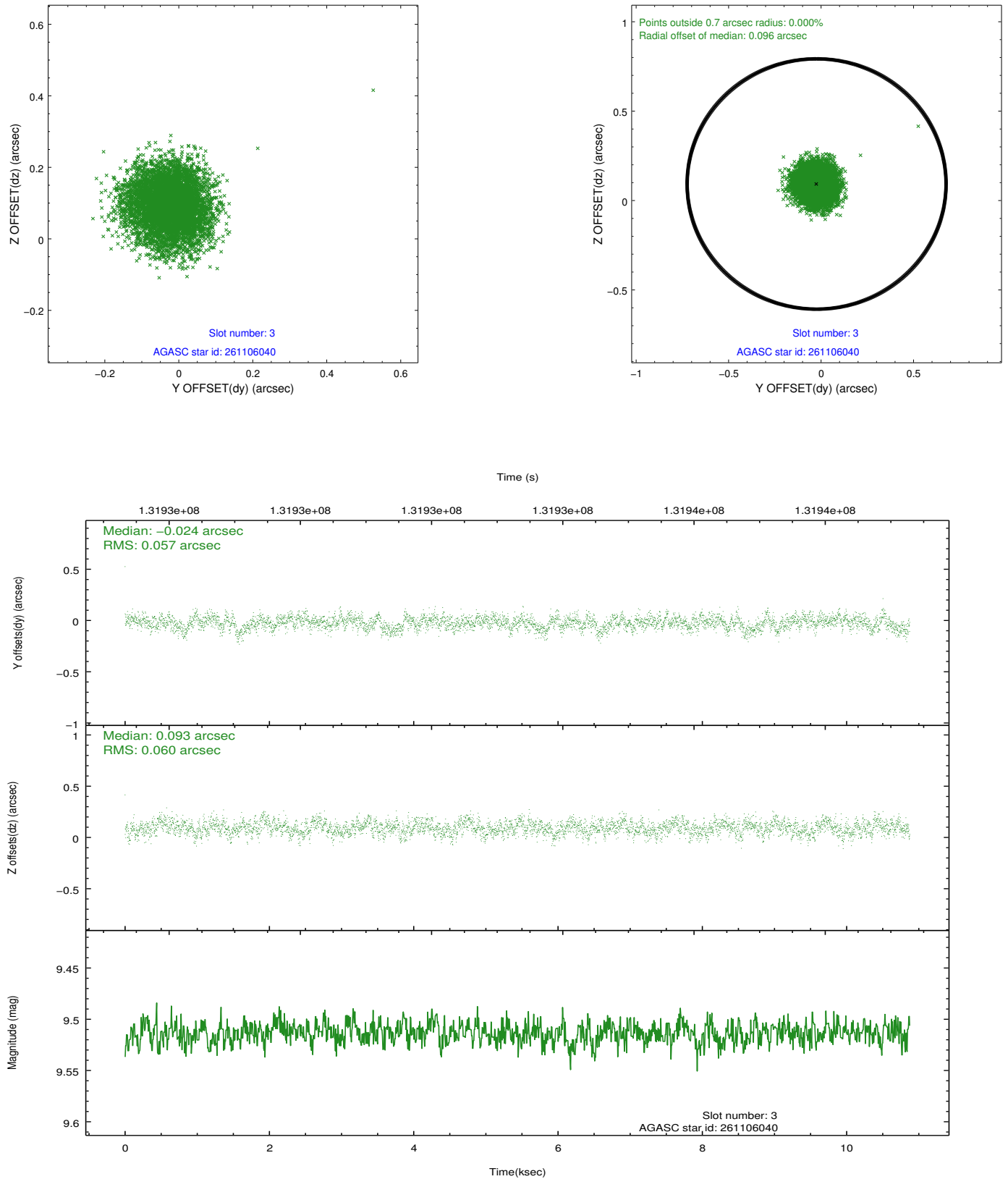


Slot Statistics

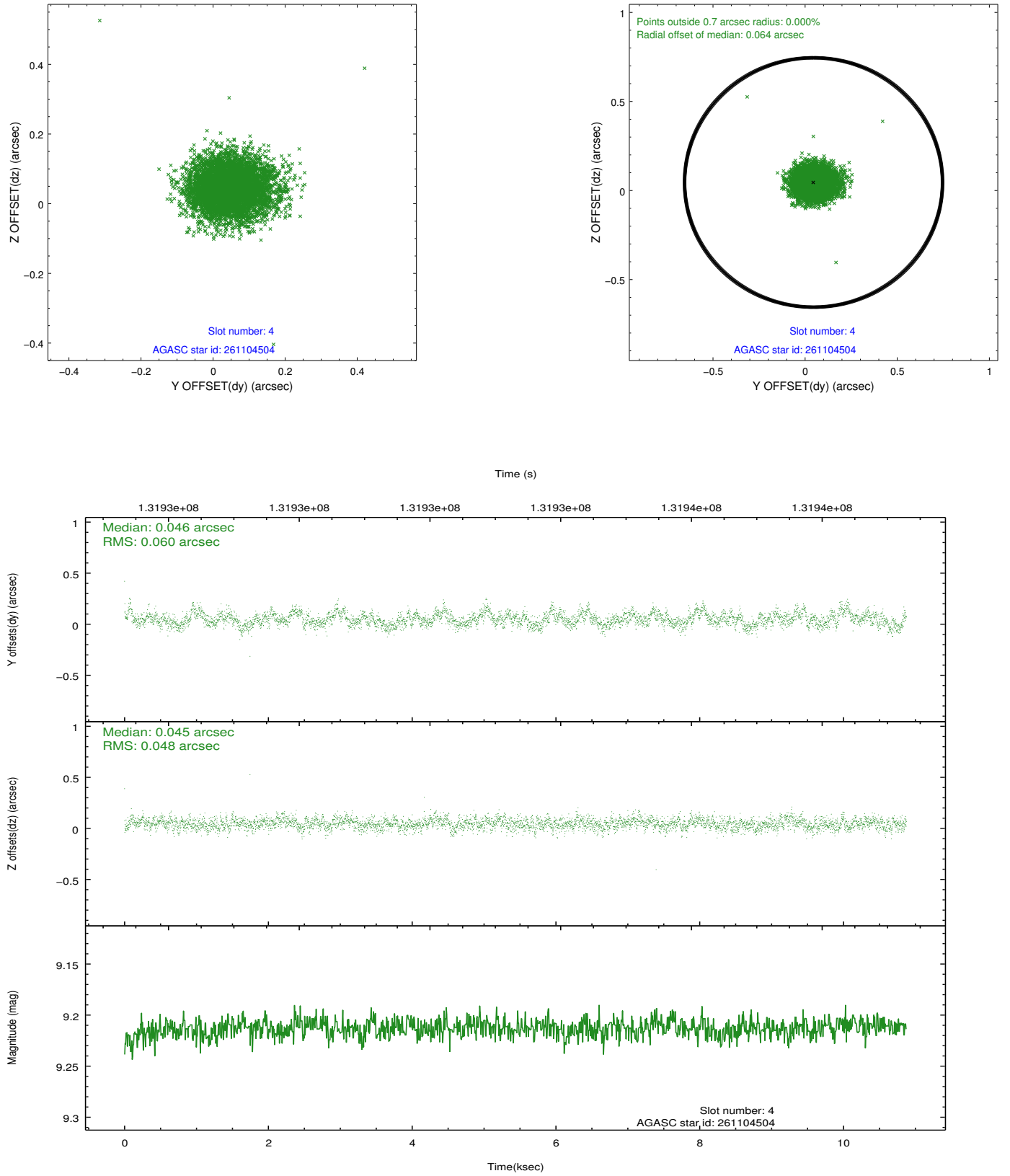
slot	status	id	mag	n_pts	med_dy	med_dz	dr1	dr2	ra	dec	mean_y	mean_z
0	FID	ACIS-S-2	7.12	2653	-0.032	0.010	0.006	0.011	0.000000	0.000000	-755.45	-1727.53
1	FID	ACIS-S-4	7.20	2653	-0.027	0.013	0.005	0.010	0.000000	0.000000	2157.58	180.52
2	FID	ACIS-S-5	7.24	2653	0.028	-0.014	0.007	0.012	0.000000	0.000000	-1807.65	174.63
3	GUIDE	261106040	9.51	5300	-0.024	0.093	0.089	0.140	190.359276	26.719638	-1973.28	-2180.20
4	GUIDE	261104504	9.21	5299	0.046	0.045	0.080	0.131	189.971784	26.502250	-1700.38	-733.74
5	GUIDE	261106896	9.50	5303	0.077	-0.111	0.106	0.170	189.696095	26.751901	-438.00	-696.44
6	GUIDE	261111336	9.18	5303	-0.129	0.064	0.085	0.136	188.497567	26.837044	2425.33	1897.80
7	GUIDE	261112288	10.26	5294	0.035	-0.092	0.161	0.260	188.699009	26.829067	1959.89	1448.37

2.4 Star Slots

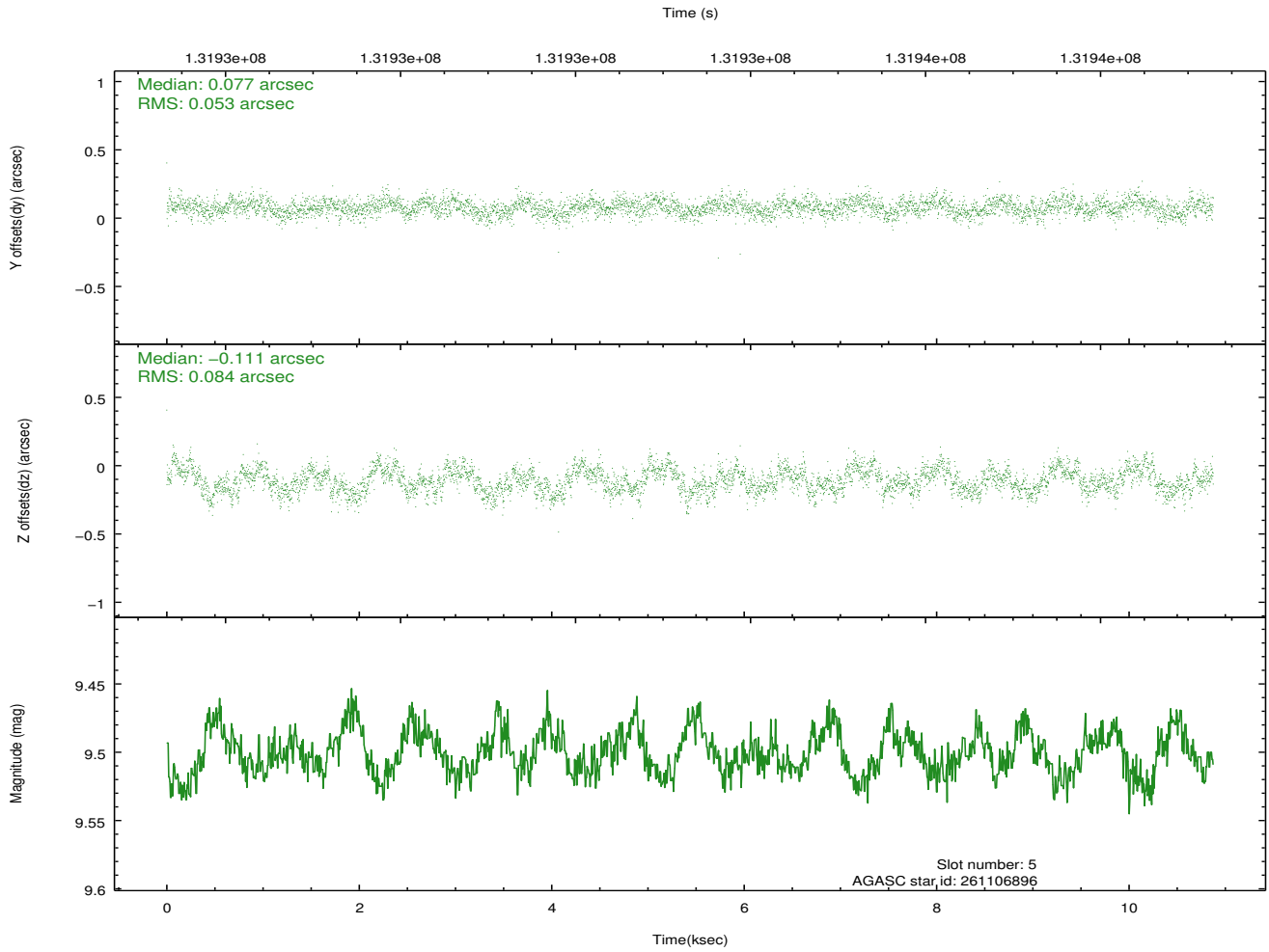
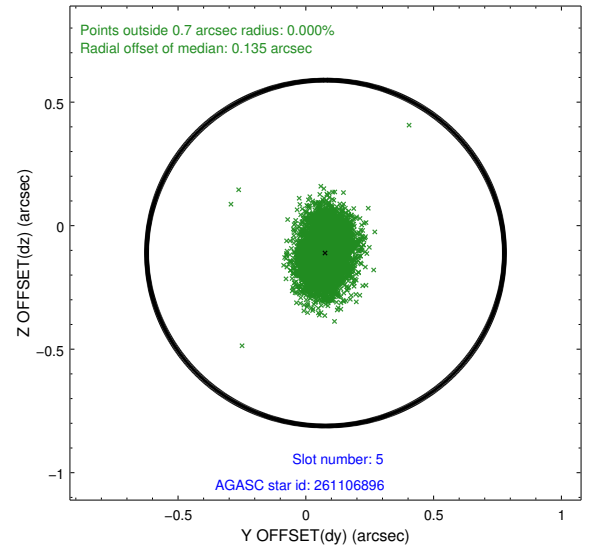
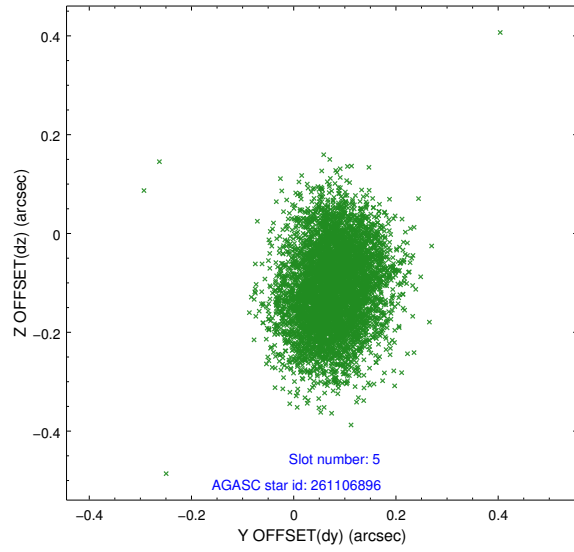
2.4.1 Slot 3



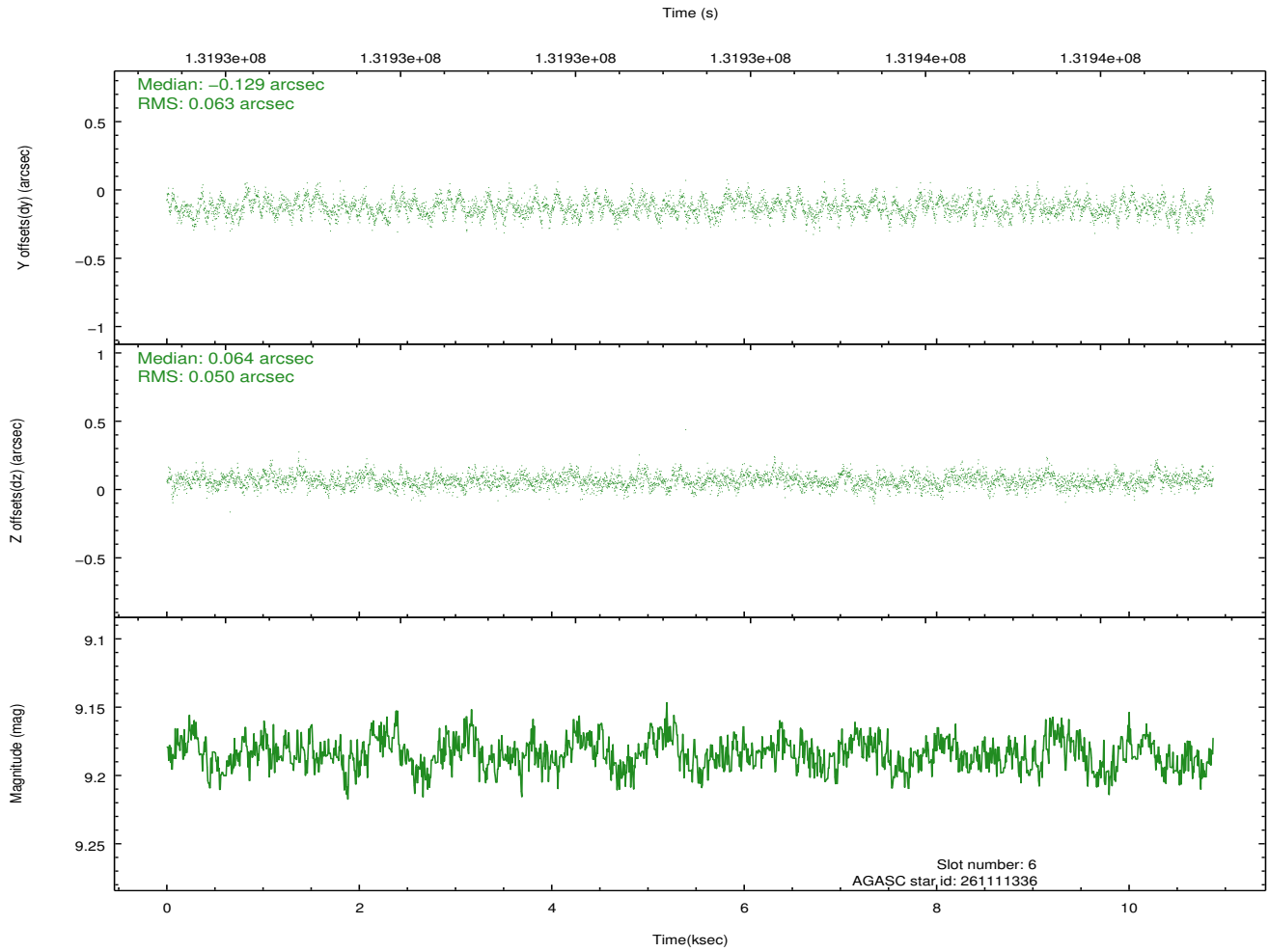
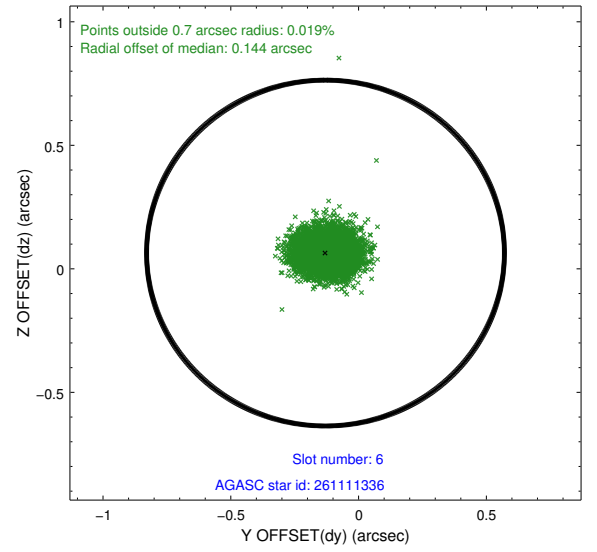
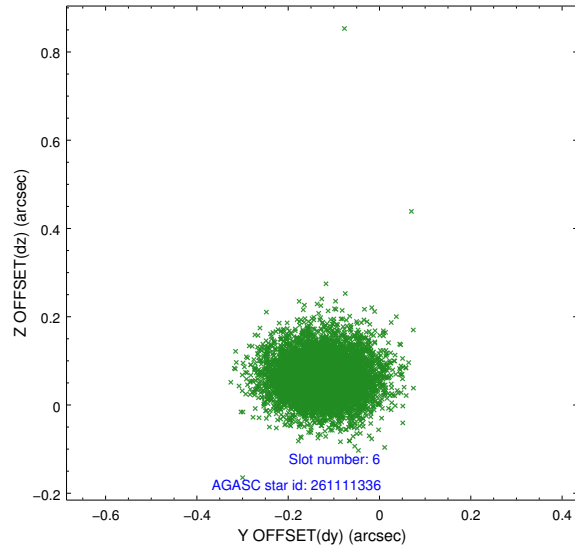
2.4.2 Slot 4



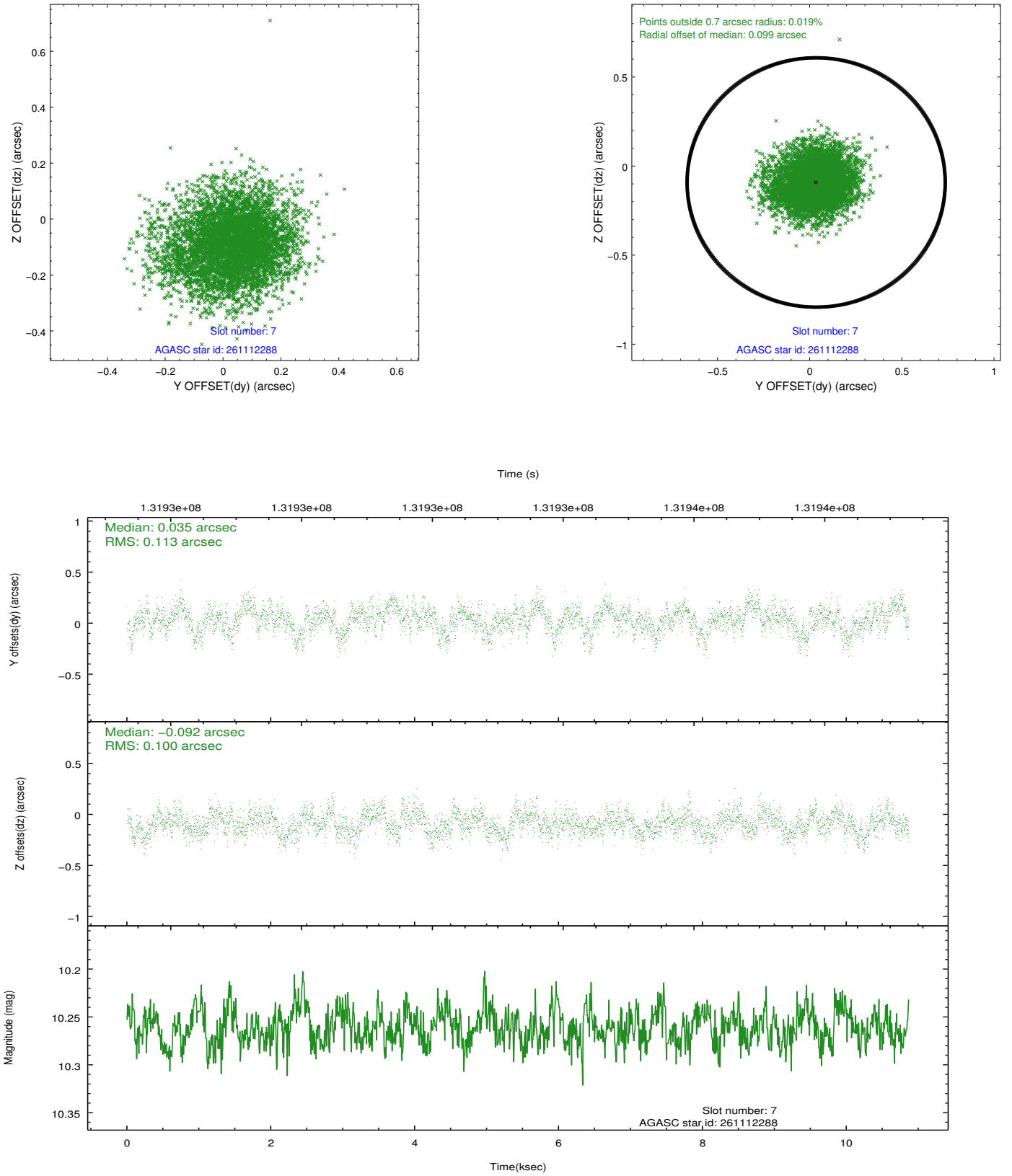
2.4.3 Slot 5



2.4.4 Slot 6

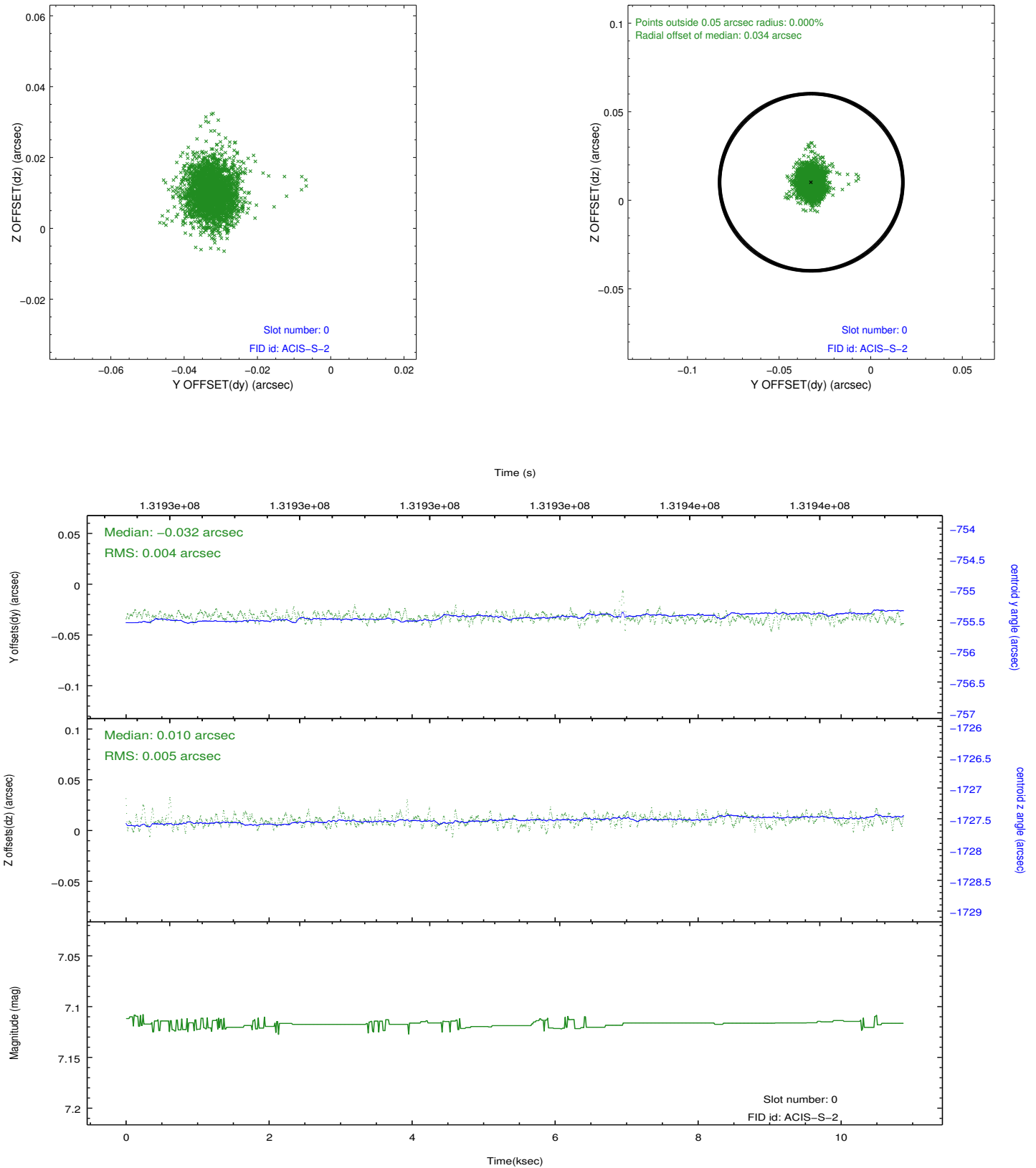


2.4.5 Slot 7

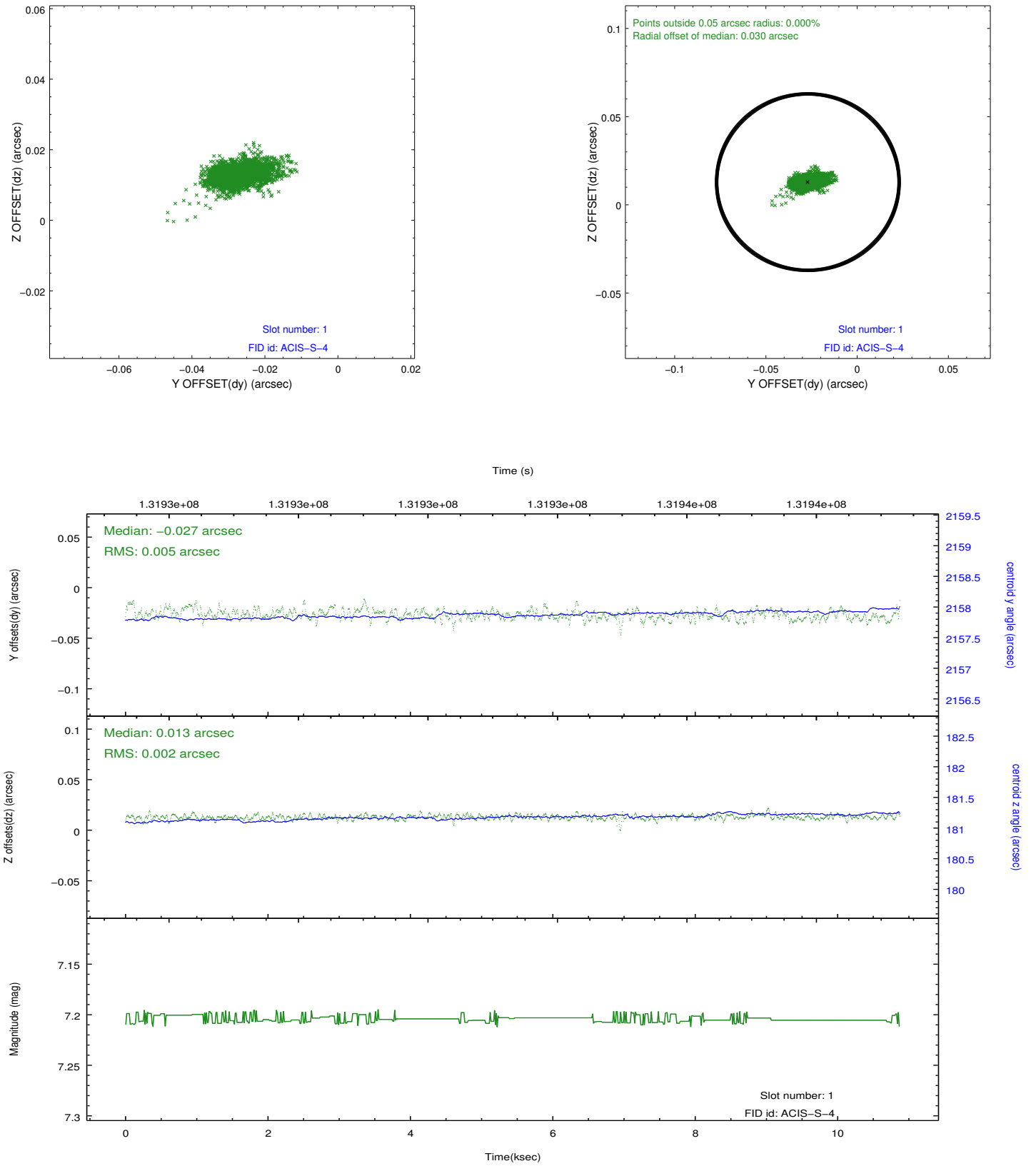


2.5 FID Slots

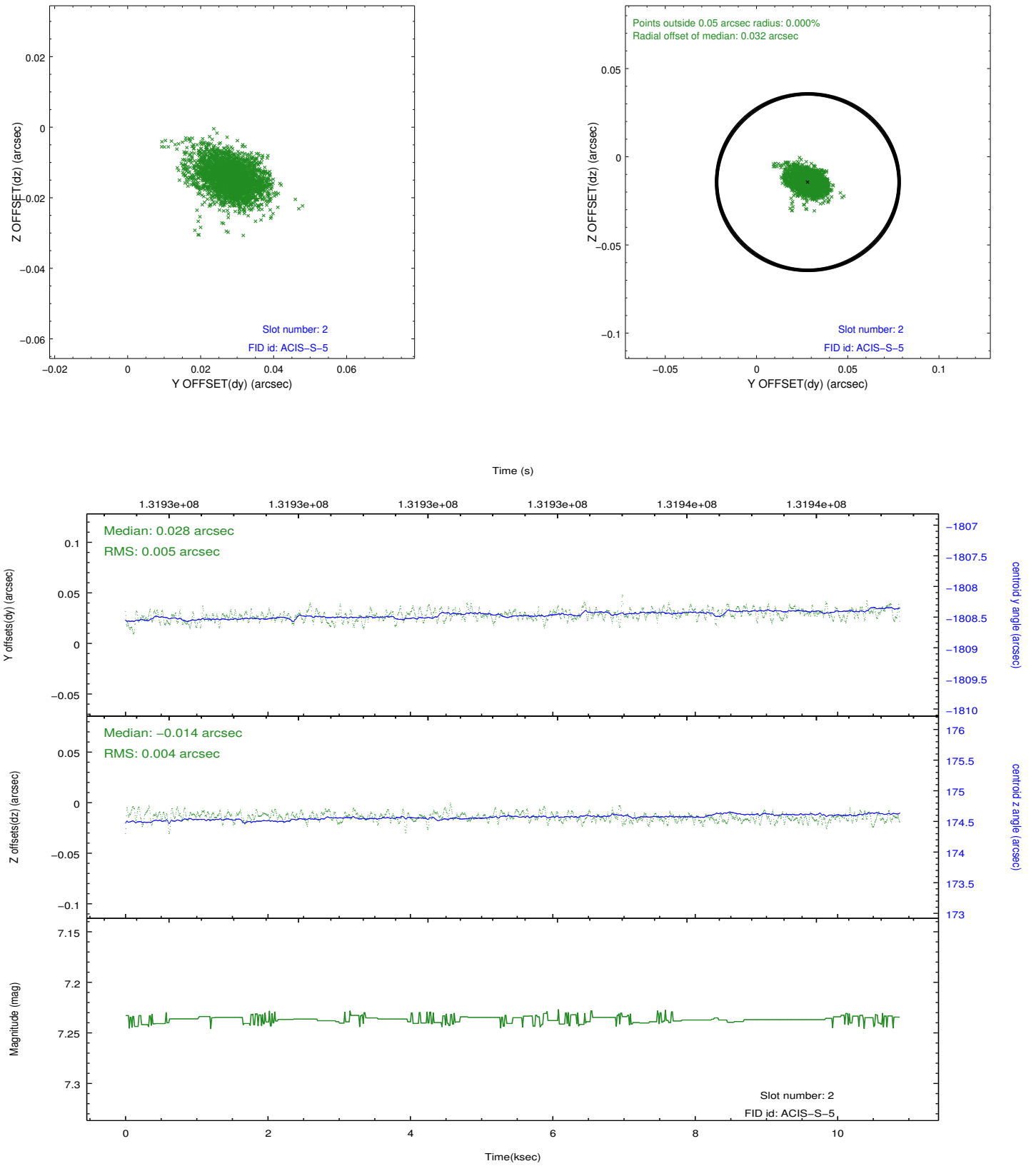
2.5.1 Slot 0



2.5.2 Slot 1



2.5.3 Slot 2



A Summary

A.1 Status

V&V Scientist	Beth Sundheim
V&V Date (YYYY-MM-DD)	2012.10.04
V&V Edition	1
V&V Disposition and Status	OK
V&V Charge Time	10.553

A.2 Comments