

# V&V Reference Report

## L2 ASCDS Version : 8.4.5

Observation 2997 - L2 Version 3  
Chandra X-Ray Center

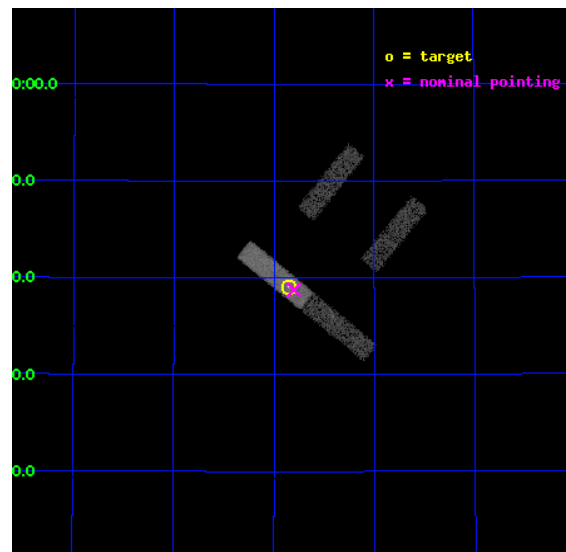
L2 Processing Date : Oct 7 2012

## Contents

<b>1</b>	<b>Front</b>	<b>2</b>
<b>2</b>	<b>OBI</b>	<b>3</b>
2.1	OBI . . . . .	3
2.1.1	Images . . . . .	3
2.1.2	Bias . . . . .	3
2.1.3	Parameters . . . . .	4
2.1.4	Events . . . . .	4
2.2	Compared Parameters . . . . .	5
2.3	Aspect . . . . .	6
2.4	Star Slots . . . . .	9
2.4.1	Slot 3 . . . . .	9
2.4.2	Slot 4 . . . . .	10
2.4.3	Slot 5 . . . . .	11
2.4.4	Slot 6 . . . . .	12
2.4.5	Slot 7 . . . . .	13
2.5	FID Slots . . . . .	14
2.5.1	Slot 0 . . . . .	14
2.5.2	Slot 1 . . . . .	15
2.5.3	Slot 2 . . . . .	16
<b>A</b>	<b>Summary</b>	<b>17</b>
A.1	Status . . . . .	17
A.2	Comments . . . . .	17

# 1 Front

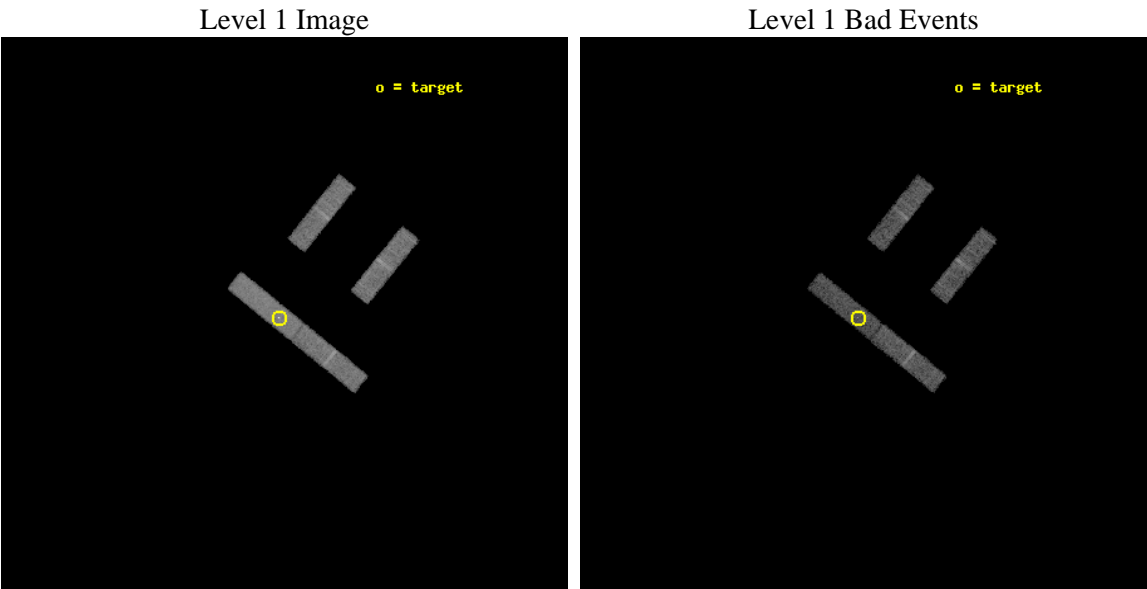
seq_num	700436	Sequence number
obs_id	2997	Observation id
title	CHANDRA SNAPSHOT OBSERVATIONS OF SOFT X-RAY TRANSIENT AGN	Proposal
observer	Dr Rick Edelson	Principal investigator
object	MCG+08-23-067	Source name
dtcycle	0	&#160
cycle	P	events from which exps? Prim/Second/Both
ra_targ	189.2125	Observer's specified target RA [deg]
dec_targ	45.650833	Observer's specified target Dec [deg]
ra_nom	189.20037901031	Nominal RA [deg]
dec_nom	45.646108854199	Nominal Dec [deg]
roll_nom	219.05922079032	Nominal Roll [deg]
revision	3	Processing version of data
ontime	10650.72056213	Sum of GTIs [s]
livetime	10230.84661697	Livetime [s]
ontime2	10650.59744212	Sum of GTIs [s]
ontime3	10648.556402117	Sum of GTIs [s]
ontime6	10651.72056213	Sum of GTIs [s]
ontime7	10650.72056213	Sum of GTIs [s]
l2events	20917	Number of level 2 events



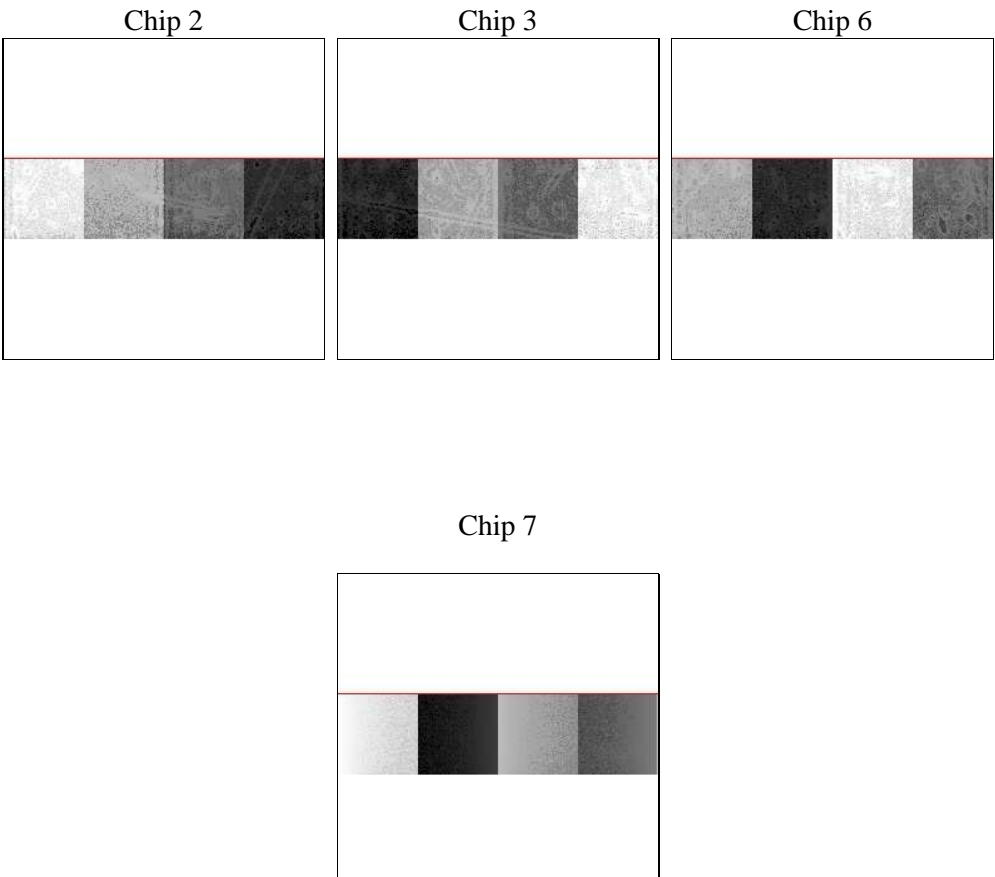
# 2 OBI

## 2.1 OBI

### 2.1.1 Images



### 2.1.2 Bias



### 2.1.3 Parameters

obi_num	0	Obi number	sched_exp_time	10000.000000	[s] Scheduled observation exposure time
ascdsver	8.4.5	Processing system revision	ontime	10650.72056213	Sum of GTIs [s]
caldsver	4.5.2	&#160	ontime2	10650.59744212	Sum of GTIs [s]
date	2012-10-07T11:26:58	Date and time of file creation	ontime3	10648.556402117	Sum of GTIs [s]
revision	3	Processing version of data	ontime6	10651.72056213	Sum of GTIs [s]
			ontime7	10650.72056213	Sum of GTIs [s]
			l1events	90105	Number of level 1 events

### 2.1.4 Events

	ccd 2	ccd 3	ccd 6	ccd 7
level 1 events	20915	19859	21483	27848
rejected events	18287	17279	18781	13188
rejected %	87%	87%	87%	47%

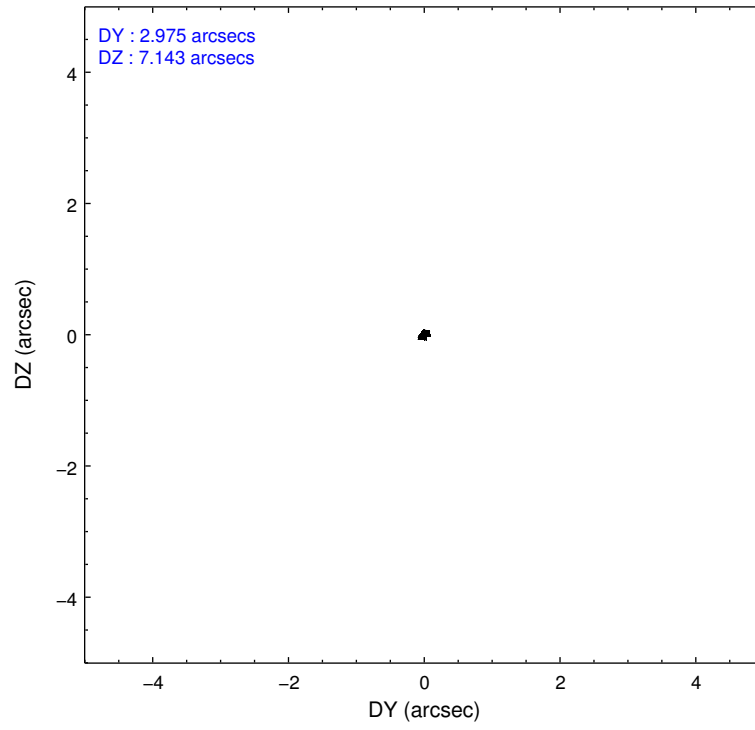
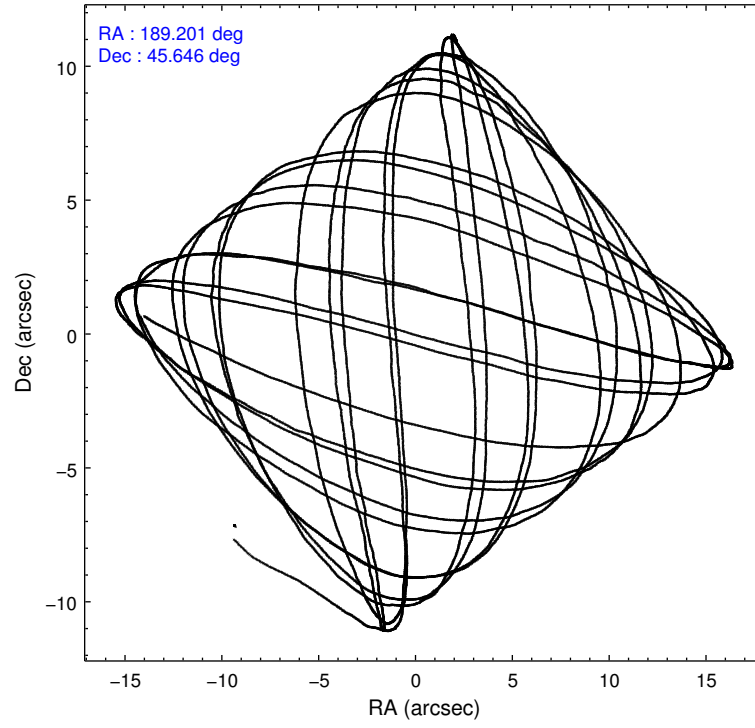
	ccd 2	ccd 3	ccd 6	ccd 7
grade 0 events	1130	1160	1138	2224
	5%	5%	5%	7%
grade 1 events	5	3	8	29
	0%	0%	0%	0%
grade 2 events	481	423	440	3057
	2%	2%	2%	10%
grade 3 events	307	321	345	1557
	1%	1%	1%	5%
grade 4 events	333	312	338	1562
	1%	1%	1%	5%
grade 5 events	619	694	807	2271
	2%	3%	3%	8%
grade 6 events	379	364	445	6268
	1%	1%	2%	22%
grade 7 events	17661	16582	17962	10880
	84%	83%	83%	39%

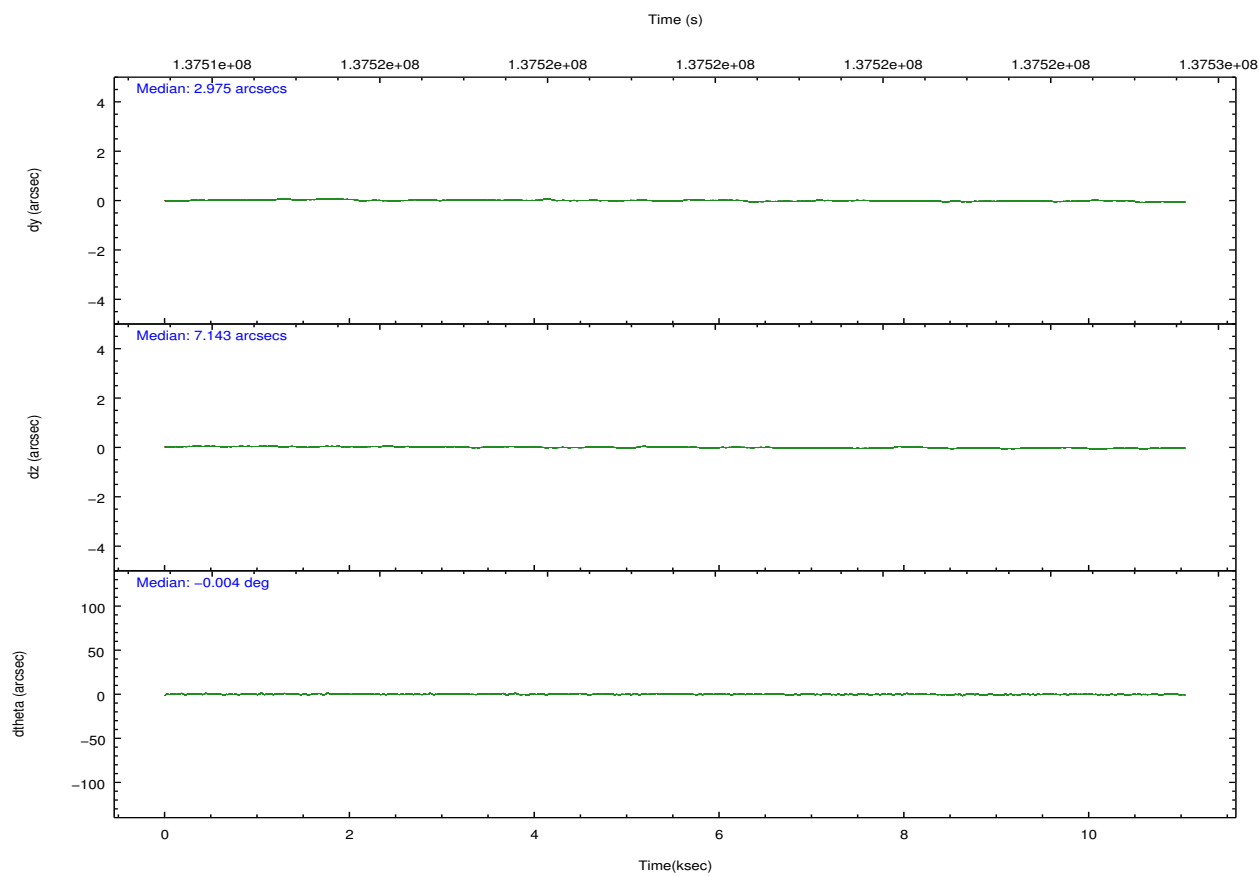
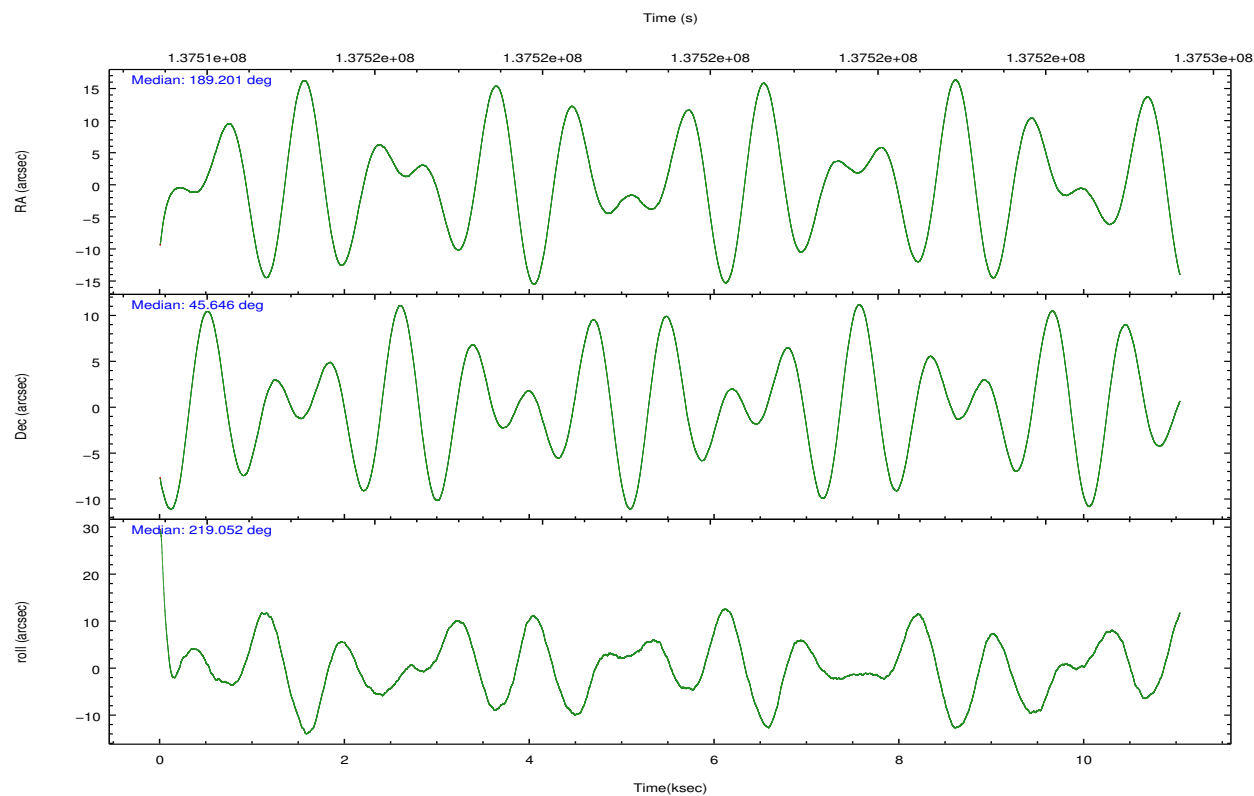


## 2.2 Compared Parameters

Parameter	Planned	Actual	Parameter	Planned	Actual
Instrument	ACIS	ACIS	Obspar format version number	7	7
Detector	ACIS-2367	ACIS-2367	Obspar file type	PREDICTED	ACTUAL
Grating	NONE	NONE	Obspar update status	NONE	UPDATED
Data mode	FAINT	FAINT	Number of optional ACIS chips dropped	0	0
Observation mode	POINTING	POINTING	On-chip summing requested	N	N
[deg] Pointing RA	189.213825	189.2003790103079	Subarray requested	CUSTOM	1/4
[deg] Pointing Dec	45.671712	45.64610885419914	Subarray start row	385	385
[deg] Pointing Roll	218.892944	219.05922079032	Subarray row count	256	256
[mm] SIM focus pos	-0.684267	-0.6828225247311905	Alternating exposures requested	N	N
[mm] SIM defocus	0	0.001444936568705701	[s] Primary exposure time	0.000000	1
[mm] SIM translation stage pos	-190.132523	-190.1400660498719			
[mm] SIM translation stage offset	0	0.00754346686406393			
[s] Observation start time (MET)	137515041.184000	137513659.03096			
Observation start date	2002-05-11T14:36:17	2002-05-11T14:14:19			
[s] Observation end time (MET)	137525041.184000	137525175.41893			
Observation end date	2002-05-11T17:22:57	2002-05-11T17:26:15			
Read mode	TIMED	TIMED			

## 2.3 Aspect



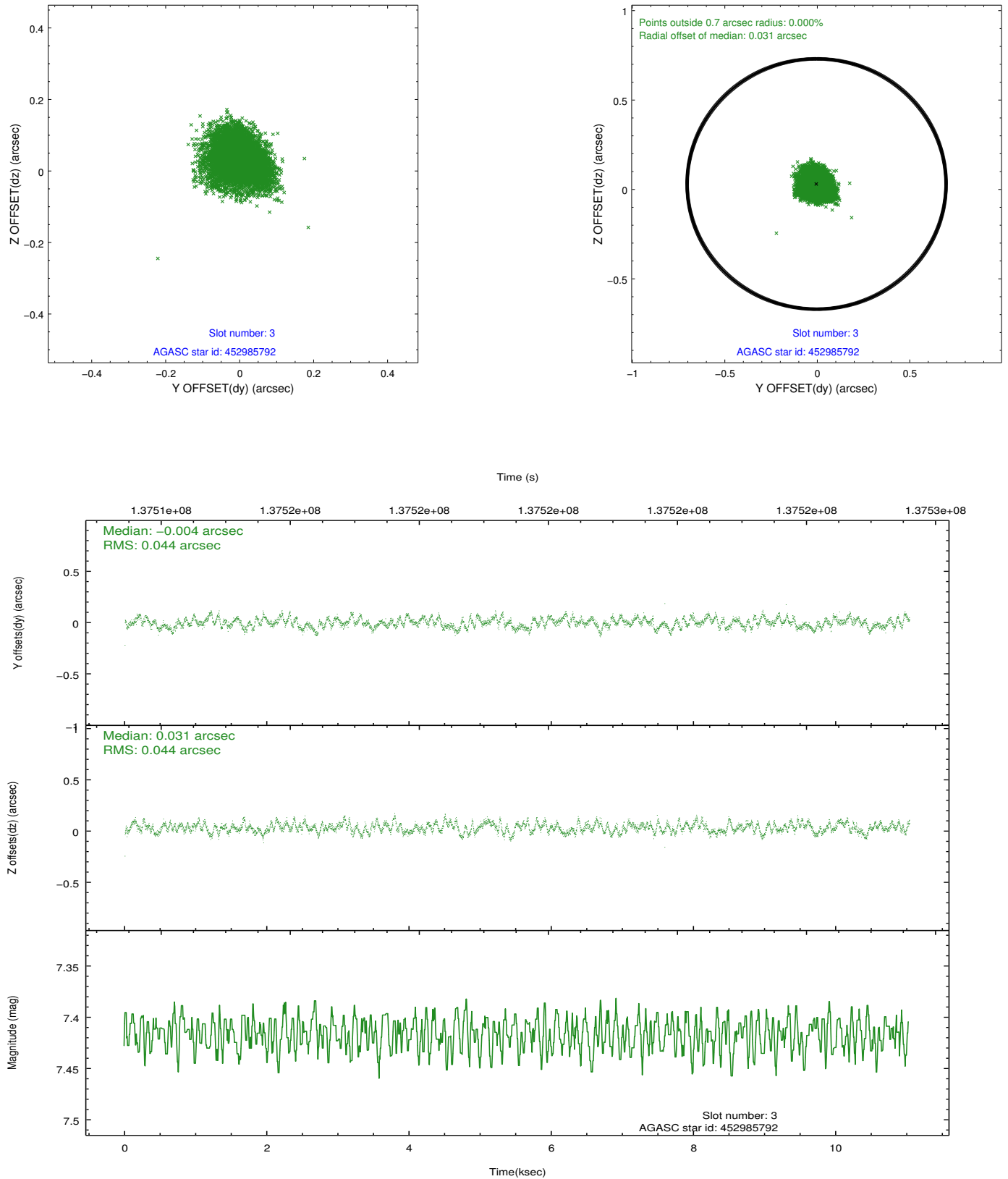


### Slot Statistics

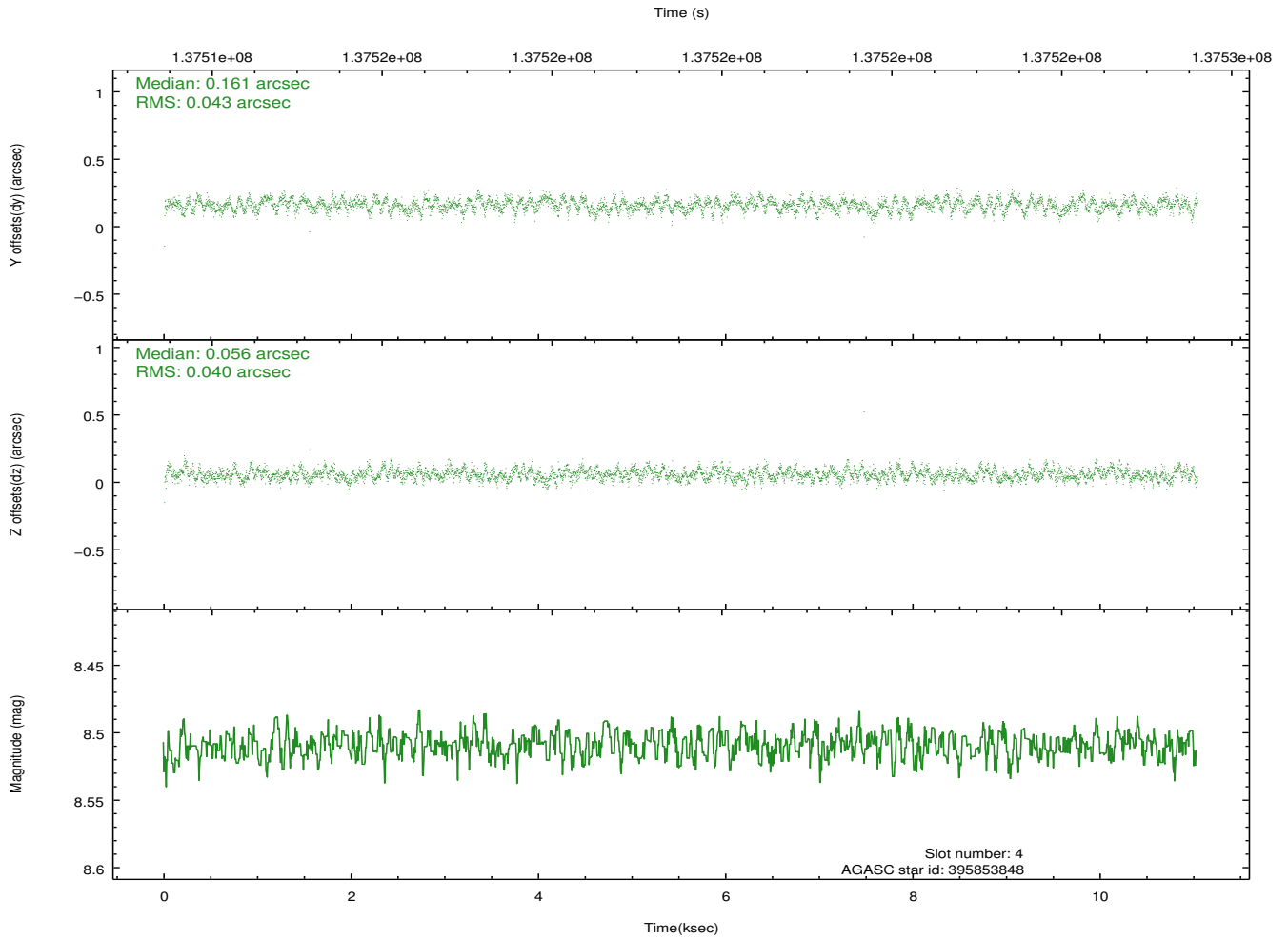
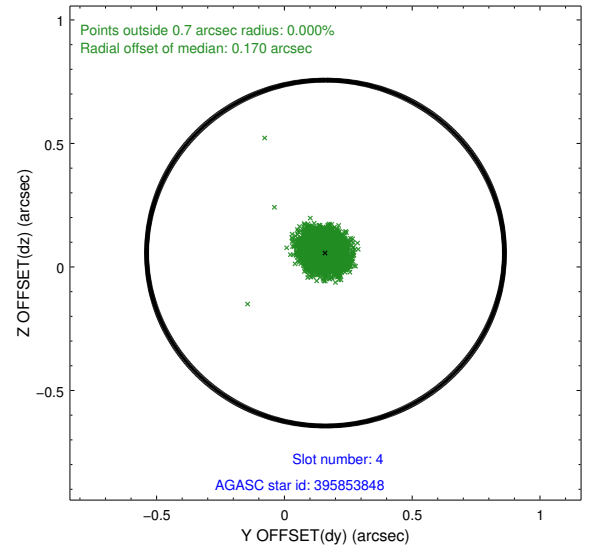
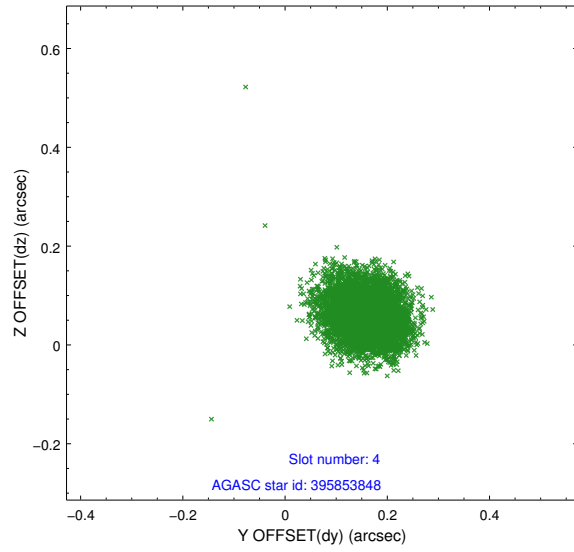
slot	status	id	mag	n_pts	med_dy	med_dz	dr1	dr2	ra	dec	mean_y	mean_z
0	FID	ACIS-S-2	7.11	2689	-0.015	0.006	0.006	0.011	0.000000	0.000000	-755.62	-1728.31
1	FID	ACIS-S-4	7.20	2689	-0.024	0.006	0.005	0.009	0.000000	0.000000	2157.43	179.70
2	FID	ACIS-S-5	7.24	2692	0.008	-0.003	0.006	0.011	0.000000	0.000000	-1807.85	173.88
3	GUIDE	452985792	7.42	5378	-0.004	0.031	0.067	0.104	189.636500	45.217095	192.76	1944.23
4	GUIDE	395853848	8.51	5382	0.161	0.056	0.062	0.099	189.124914	44.899525	1922.95	2021.55
5	GUIDE	453000656	9.00	5381	-0.131	0.002	0.081	0.128	190.066448	45.622198	-1564.89	1477.57
6	GUIDE	452998520	9.57	5381	-0.049	-0.005	0.098	0.161	188.919724	46.220079	-669.14	-1997.61
7	GUIDE	452996792	9.62	5379	0.022	-0.085	0.087	0.146	189.087765	46.142605	-818.53	-1517.90

## 2.4 Star Slots

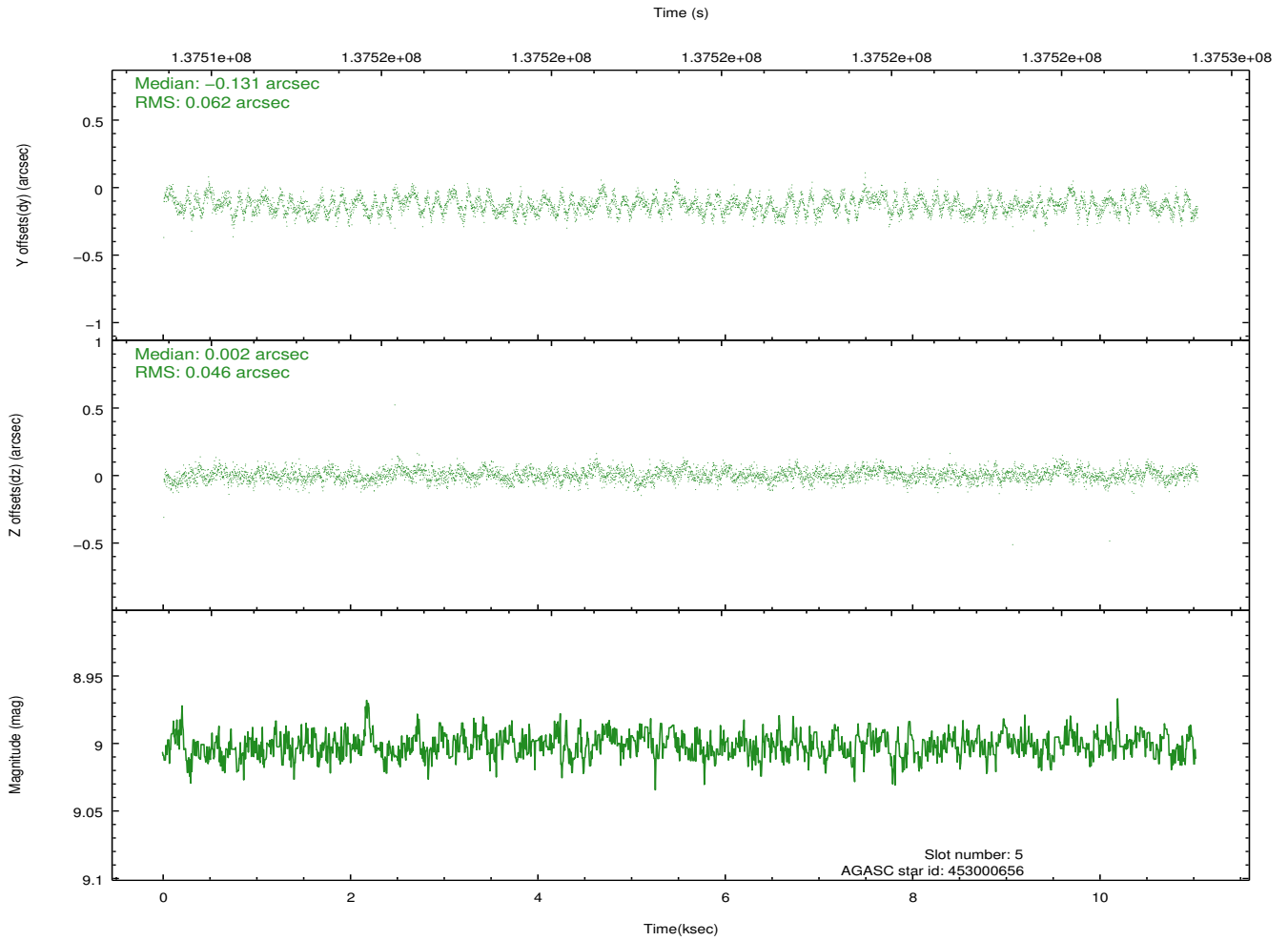
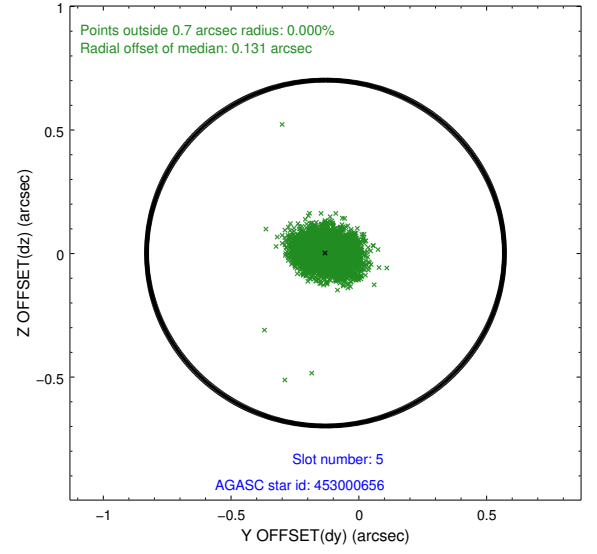
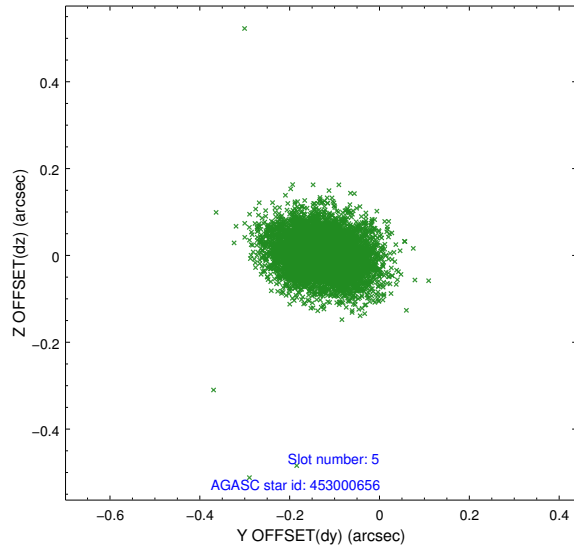
### 2.4.1 Slot 3



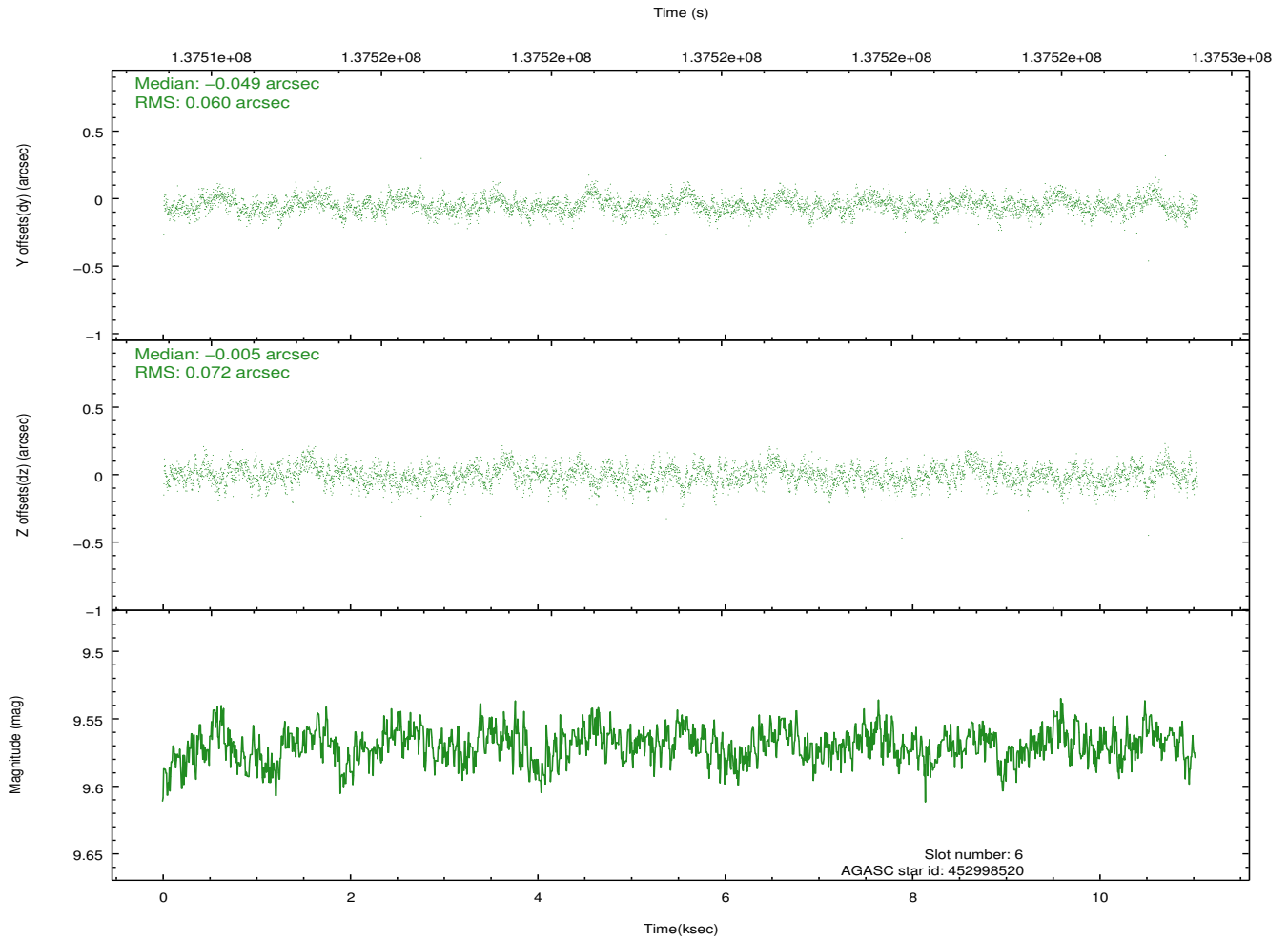
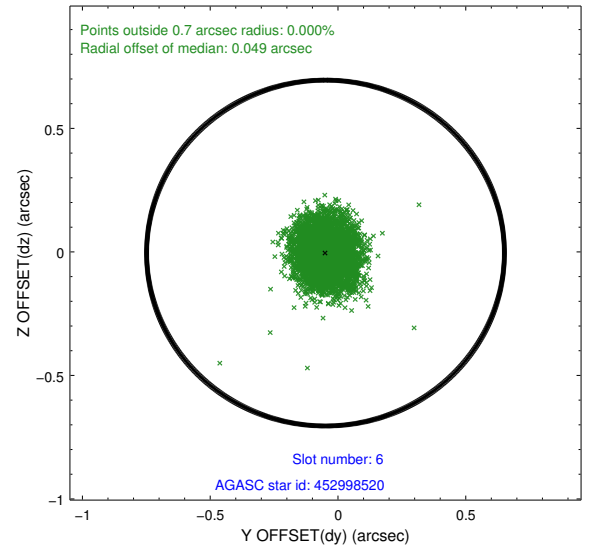
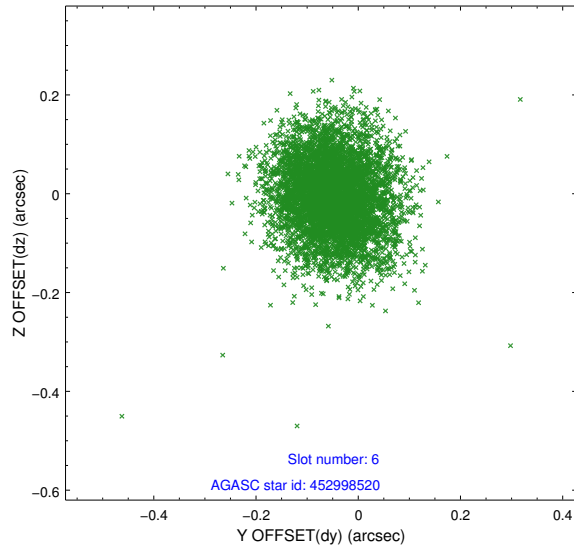
## 2.4.2 Slot 4



### 2.4.3 Slot 5

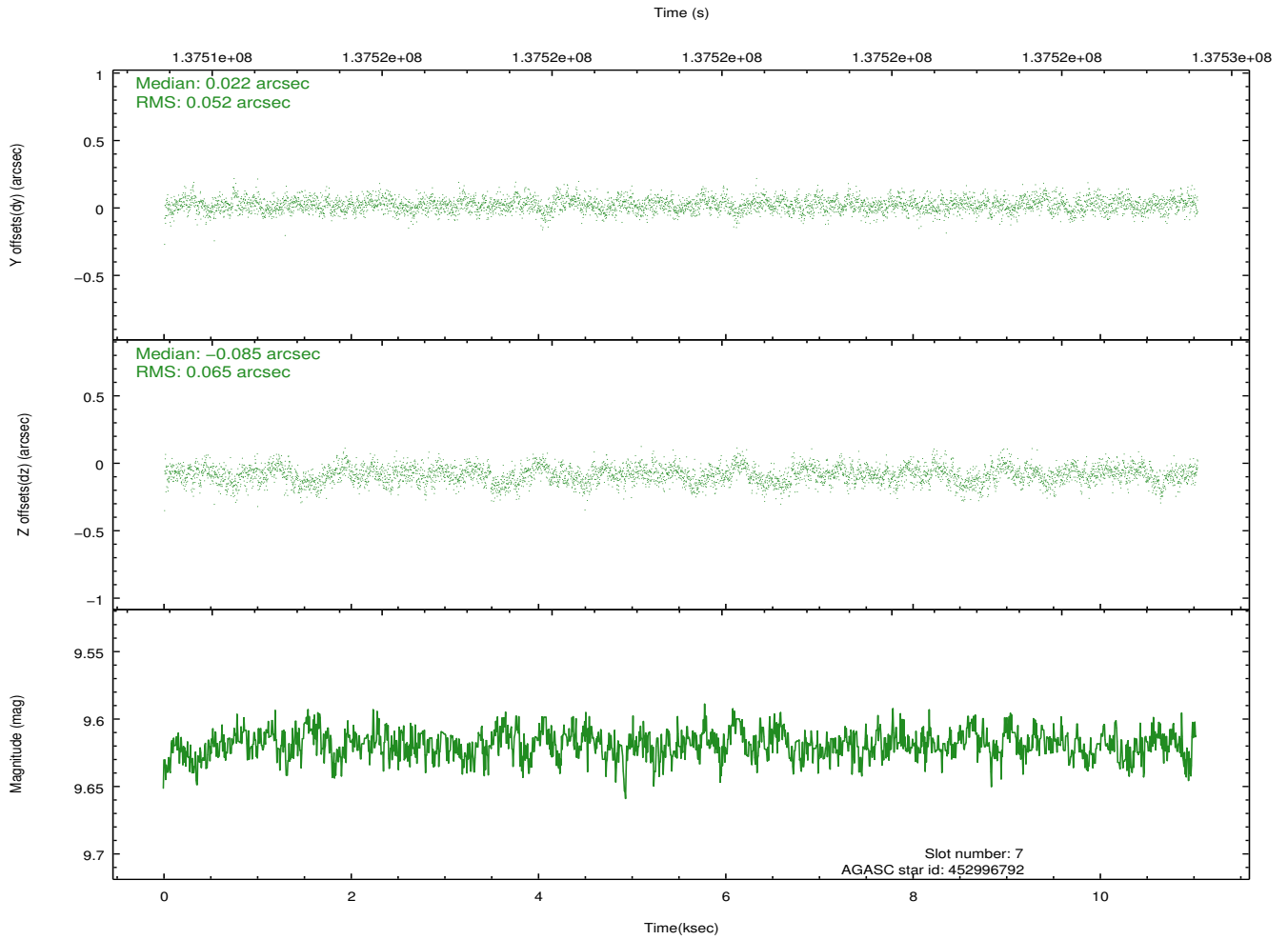
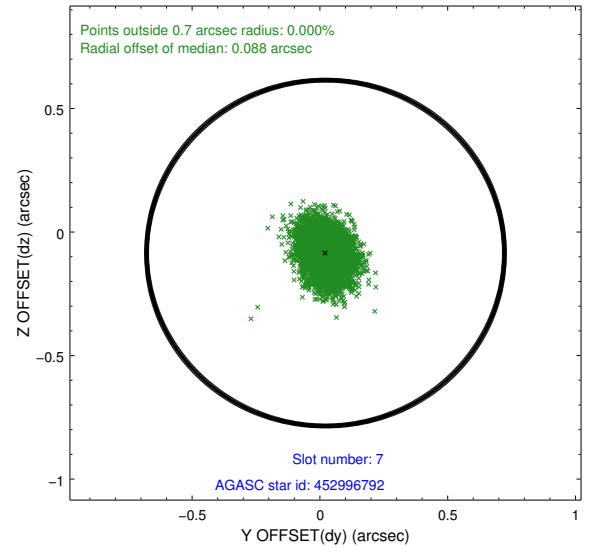
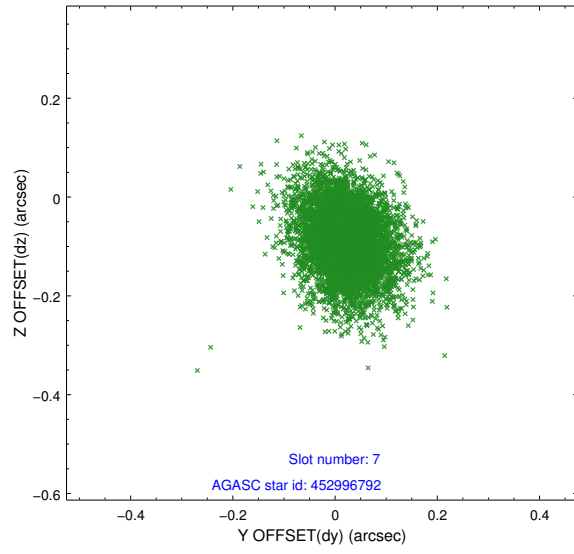


## 2.4.4 Slot 6



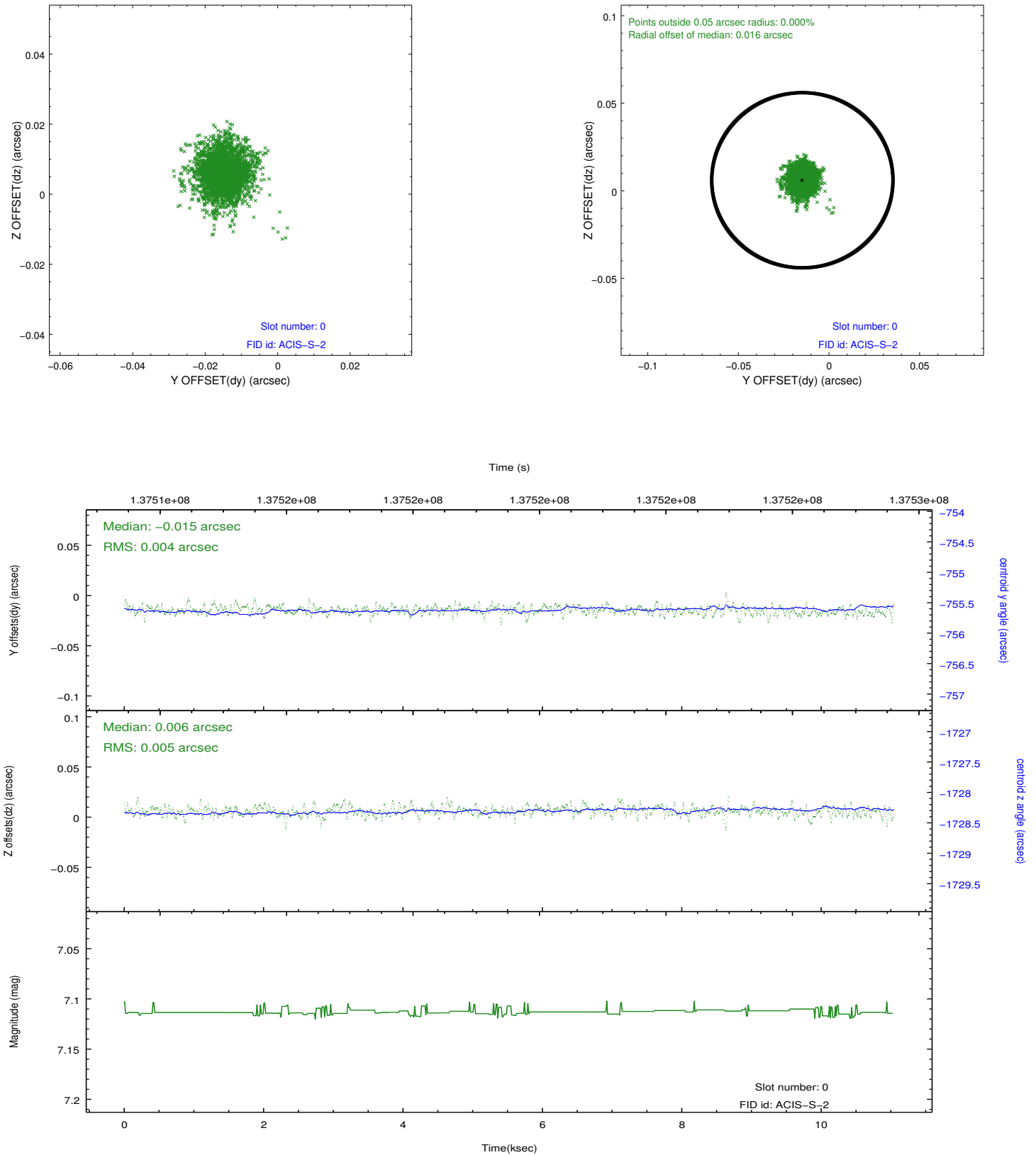


## 2.4.5 Slot 7

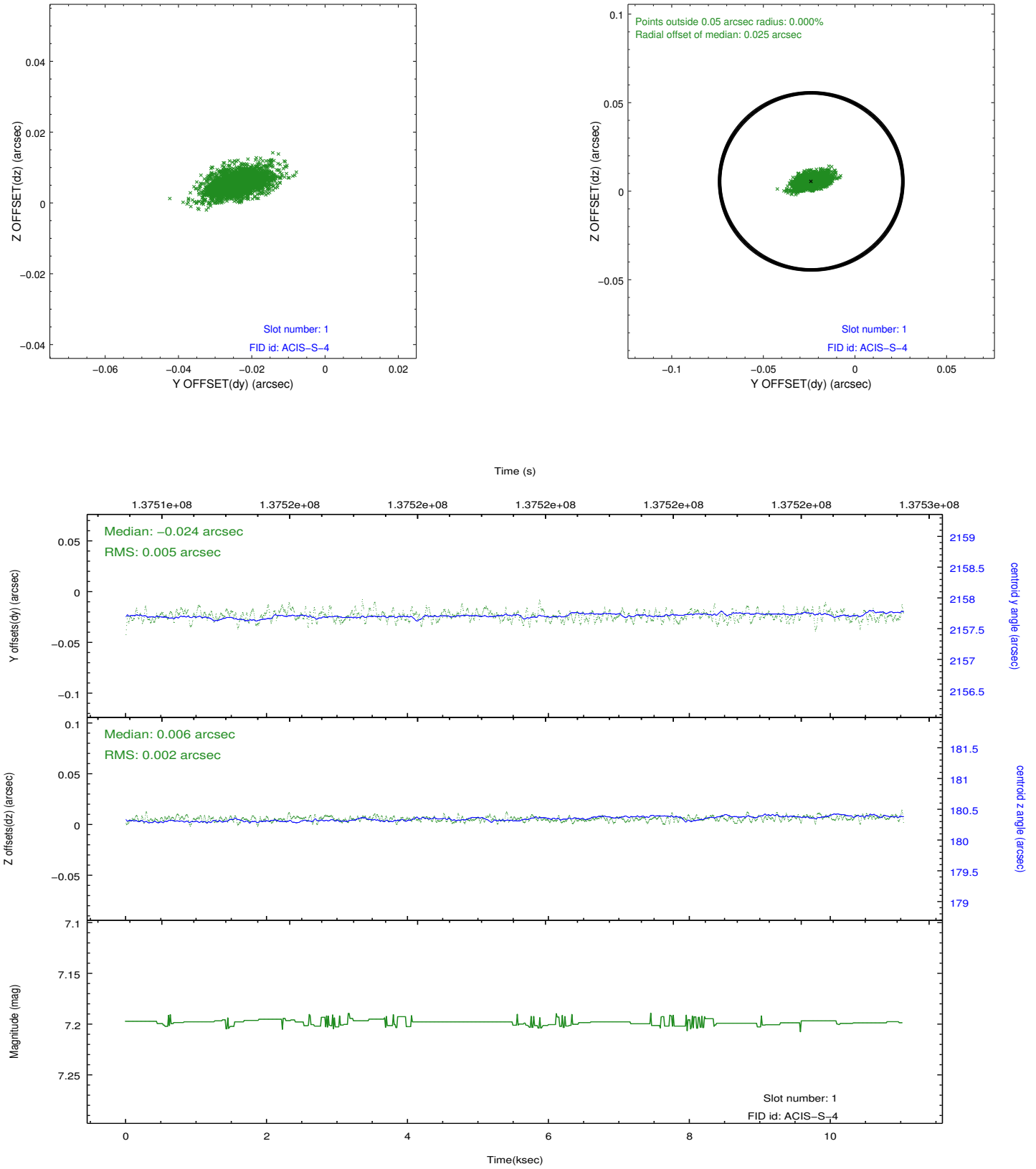


## 2.5 FID Slots

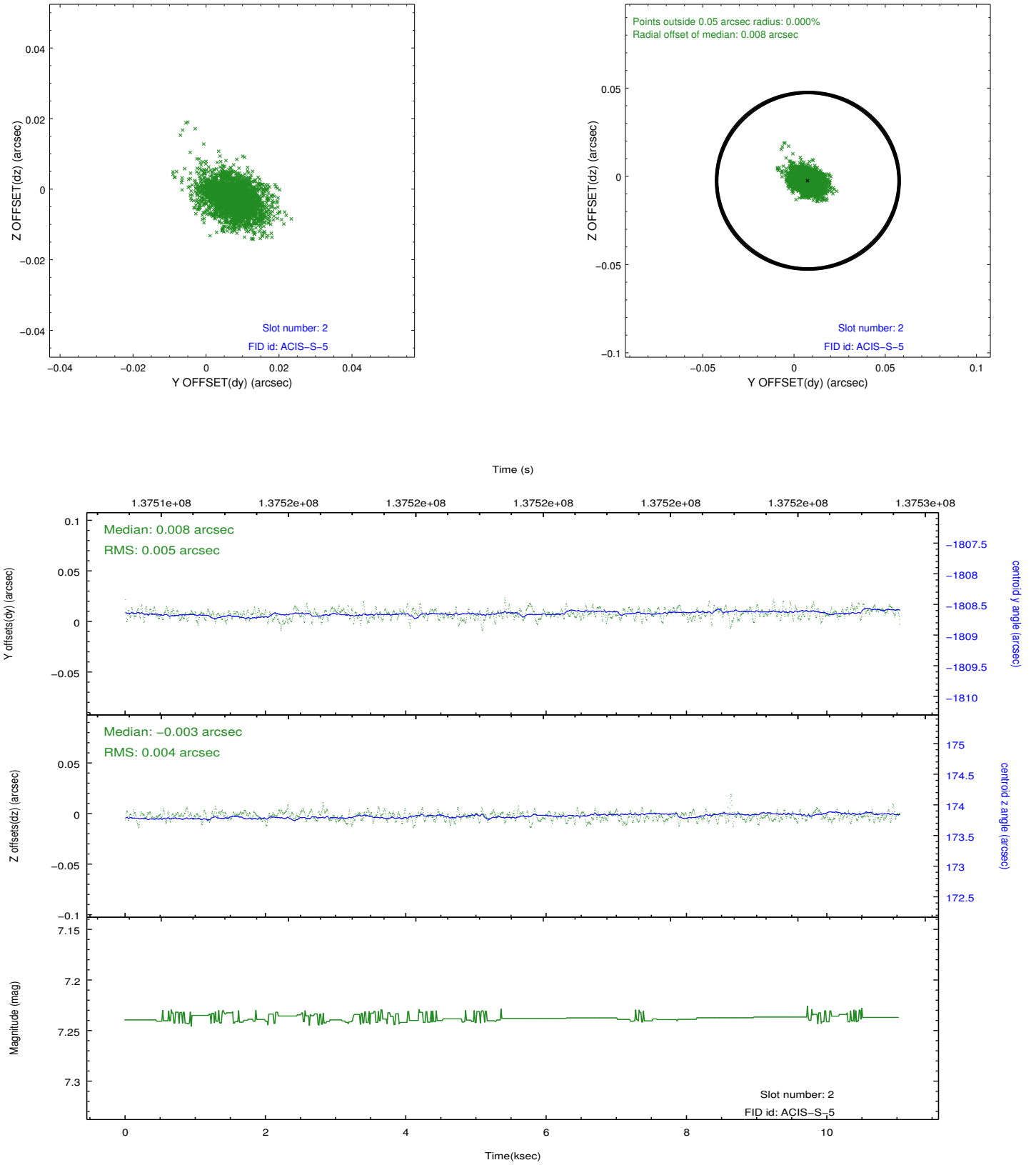
### 2.5.1 Slot 0



## 2.5.2 Slot 1



### 2.5.3 Slot 2



## A Summary

### A.1 Status

V&V Scientist	Beth Sundheim
V&V Date (YYYY-MM-DD)	2012.10.16
V&V Edition	1
V&V Disposition and Status	OK
V&V Charge Time	10.65

### A.2 Comments