

# V&V Reference Report

## L2 ASCDS Version : 7.6.9

Observation 2995 - L2 Version 001  
Chandra X-Ray Center

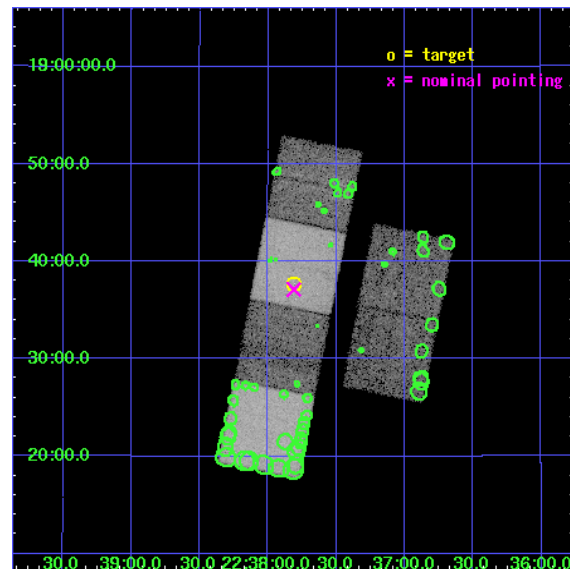
L2 Processing Date : Oct 12 2006

## Contents

<b>1</b>	<b>Front</b>	<b>2</b>
<b>2</b>	<b>OBI</b>	<b>3</b>
2.1	OBI . . . . .	3
2.1.1	Images . . . . .	3
2.1.2	Bias . . . . .	3
2.1.3	Parameters . . . . .	4
2.1.4	Events . . . . .	4
2.2	Compared Parameters . . . . .	5
2.3	Aspect . . . . .	6
2.4	Star Slots . . . . .	9
2.4.1	Slot 4 . . . . .	9
2.4.2	Slot 5 . . . . .	10
2.4.3	Slot 6 . . . . .	11
2.4.4	Slot 7 . . . . .	12
2.5	FID Slots . . . . .	13
2.5.1	Slot 0 . . . . .	13
2.5.2	Slot 1 . . . . .	14
2.5.3	Slot 2 . . . . .	15
<b>3</b>	<b>Point Sources</b>	<b>16</b>
<b>A</b>	<b>Summary</b>	<b>17</b>
A.1	Status . . . . .	17
A.2	Comments . . . . .	17

# 1 Front

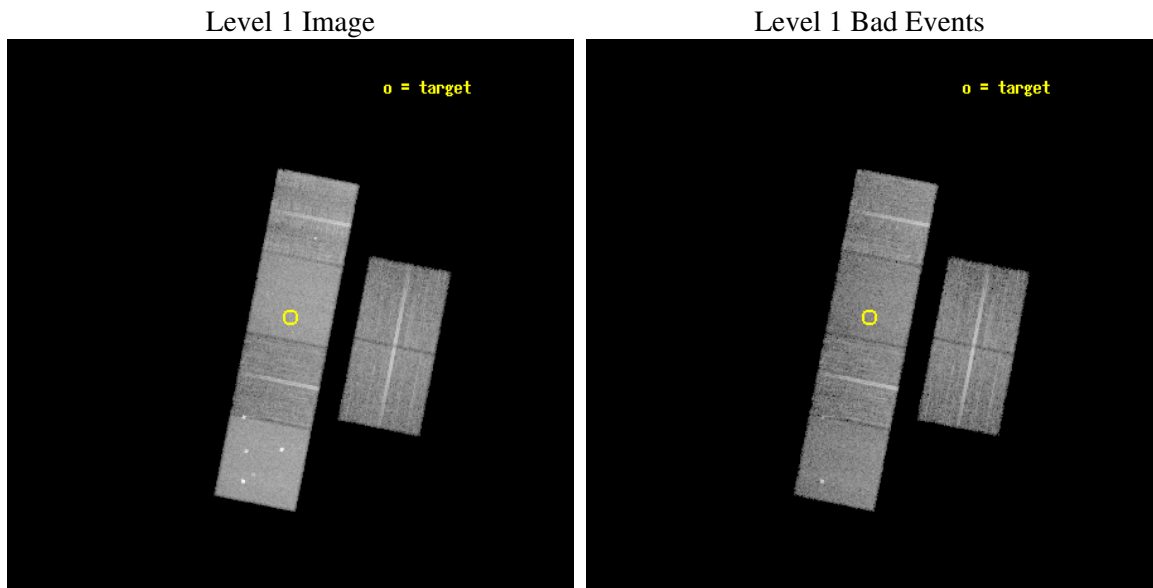
seq_num	700434
obs_id	2995
title	CHANDRA OBSERVATIONS OF A POPULATION OF TYPE 2 QUASARS DISCOVERED IN THE DPOSS
observer	PROF. S. DJORGOVSKI
object	PSS 2237+1837
dtcycle	0
cycle	P
ra_targ	339.4525
dec_targ	18.628611
ra_nom	339.45272229432
dec_nom	18.618938907478
roll_nom	281.18842009352
revision	3
ontime	14735.999945104
livetime	14549.403840845
ontime2	14735.999945104
ontime3	14735.999945104
ontime5	14735.999945104
ontime6	14735.999945104
ontime7	14735.999945104
ontime8	14732.758964837
l2events	183899



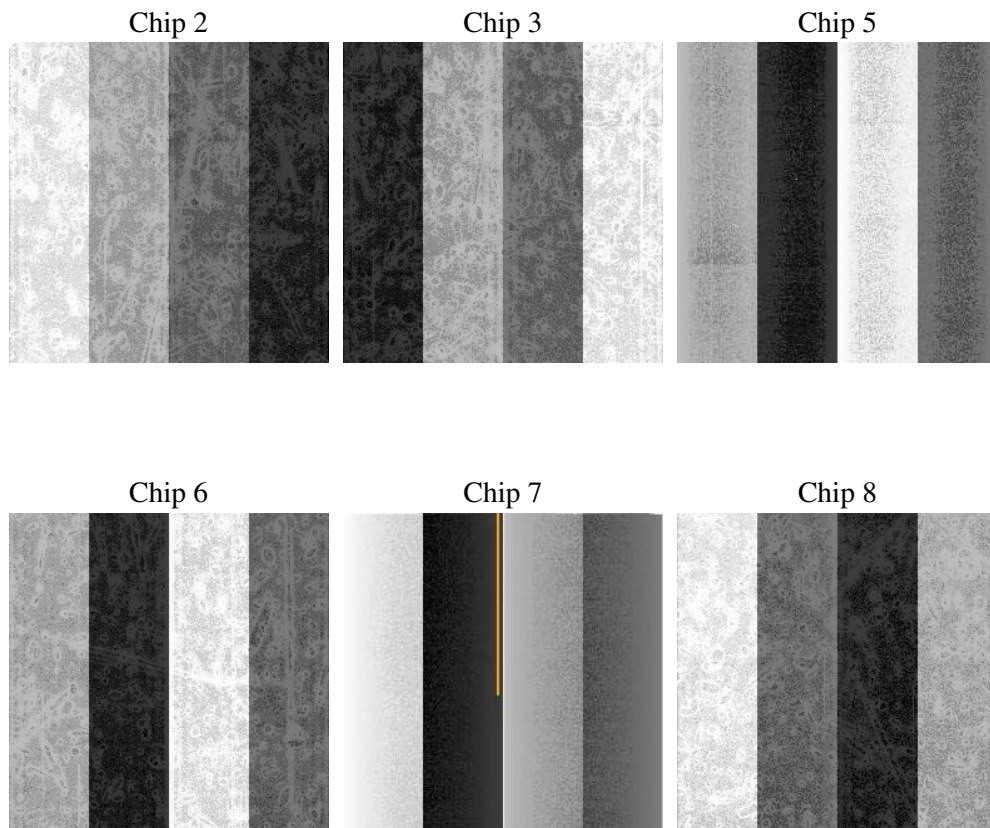
## 2 OBI

### 2.1 OBI

#### 2.1.1 Images



#### 2.1.2 Bias



### 2.1.3 Parameters

obi_num	1
ascdsver	7.6.9
caldbver	3.2.3
date	2006-10-12T14:43:47
revision	3

sched_exp_time	15000.000000
ontime	14740.08879295
ontime2	14740.08879295
ontime3	14740.08879295
ontime5	14740.08879295
ontime6	14740.08879295
ontime7	14740.08879295
ontime8	14736.847723037
l1events	691010

### 2.1.4 Events

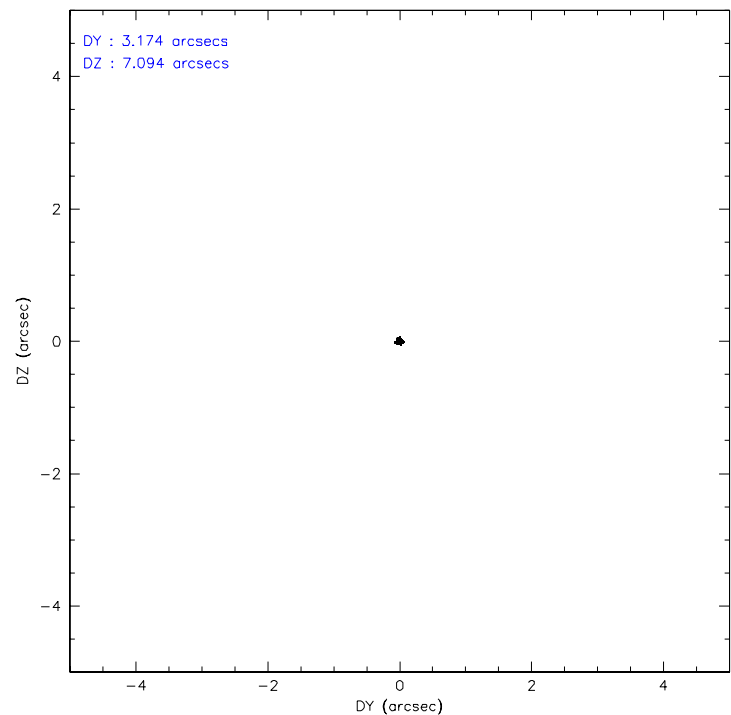
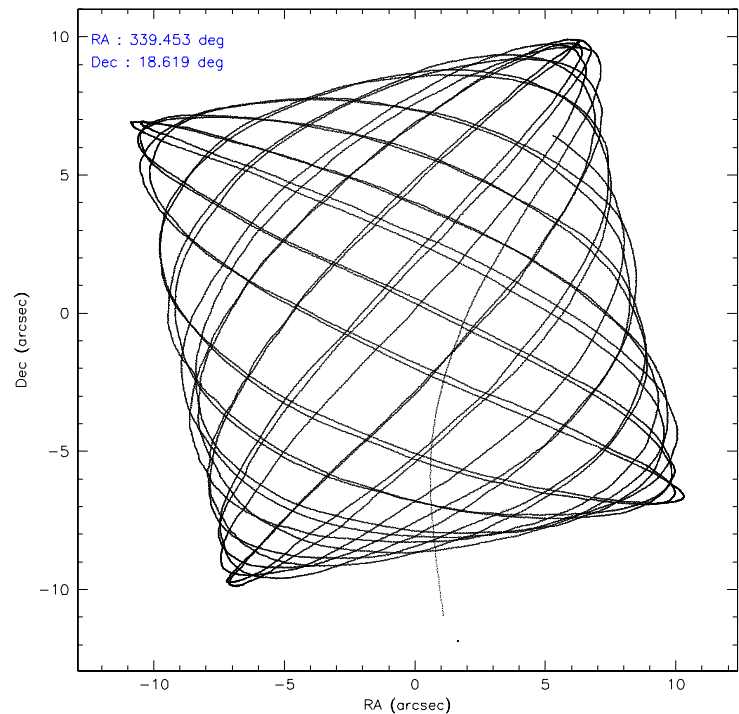
	ccd 2	ccd 3	ccd 5	ccd 6	ccd 7	ccd 8
level 1 events	89793	89012	153960	92446	136855	128944
rejected events	77134	76210	75213	77785	74020	92046
rejected %	85%	85%	48%	84%	54%	71%

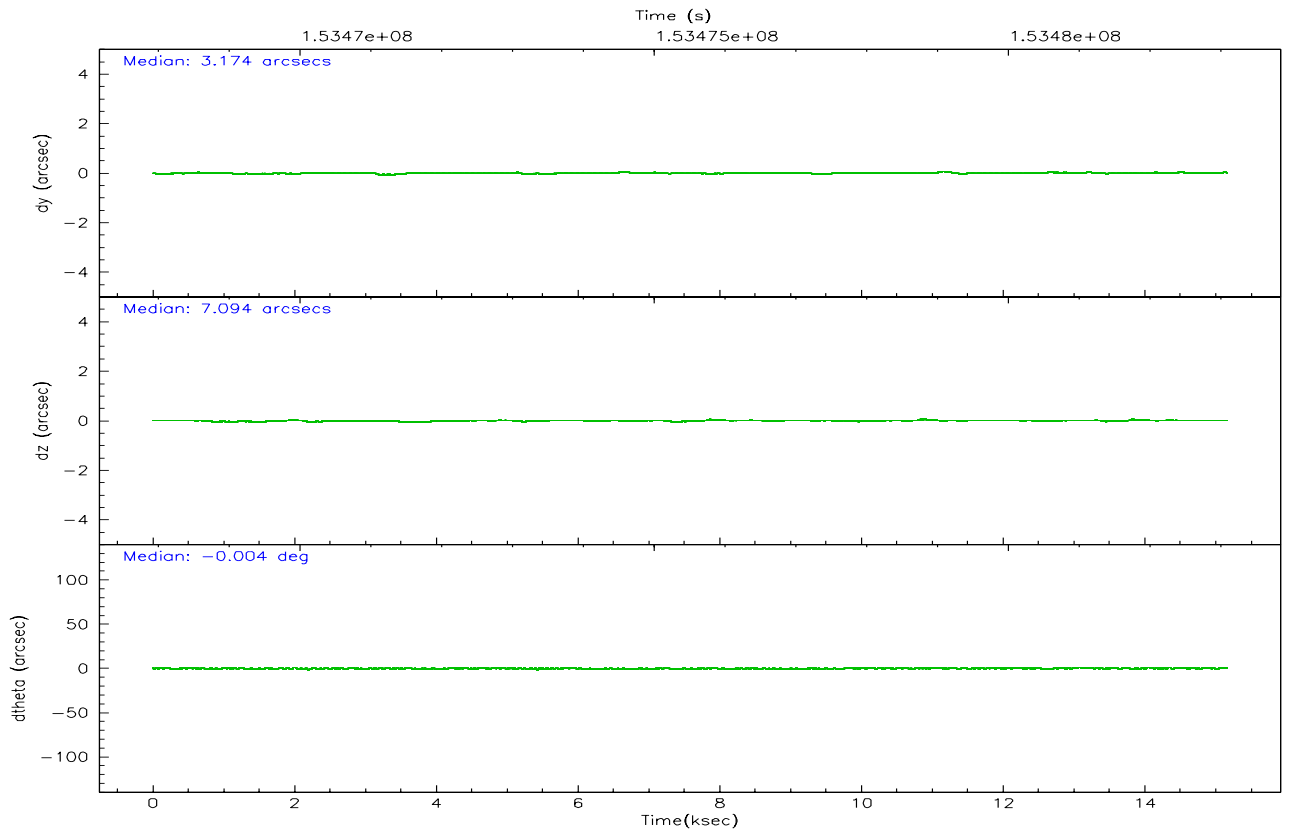
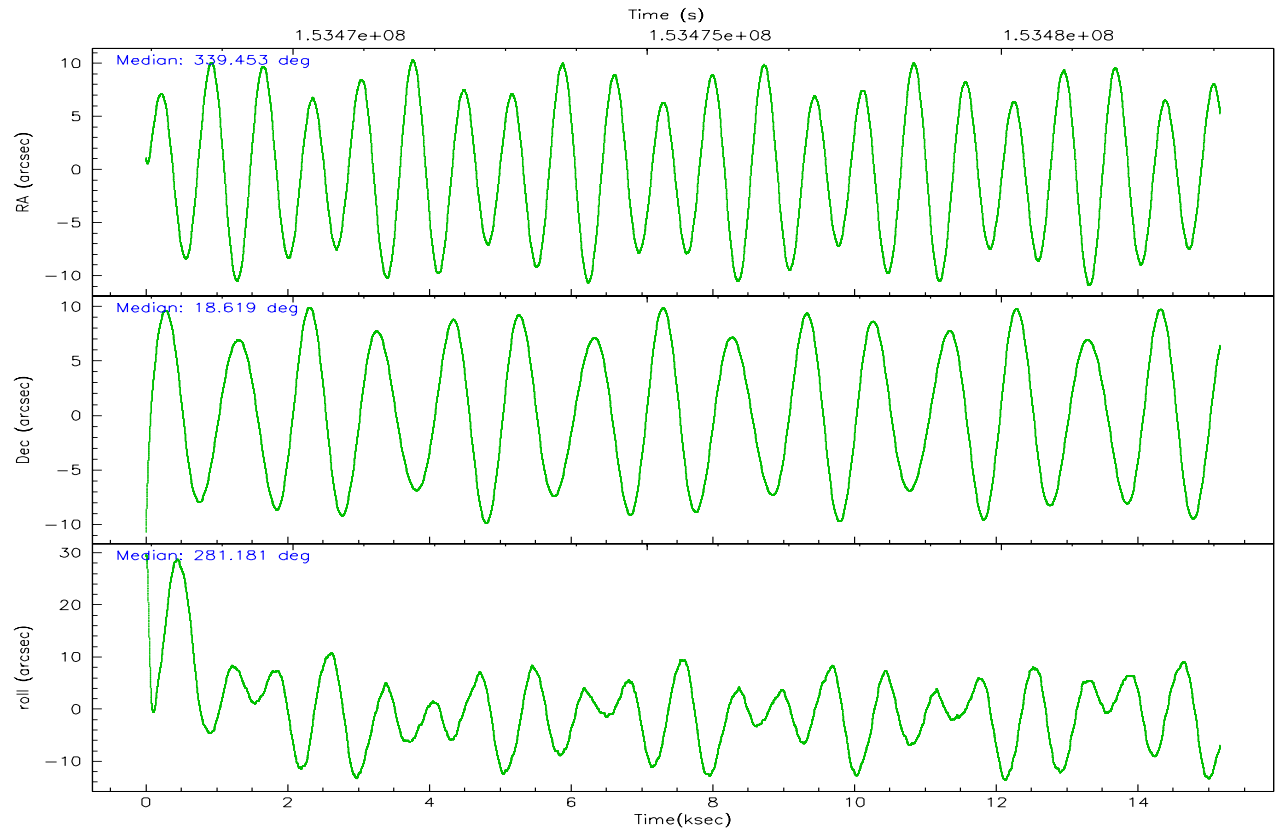
	ccd 2	ccd 3	ccd 5	ccd 6	ccd 7	ccd 8
grade 0 events	6053	6192	9270	7092	4648	14503
	6%	6%	6%	7%	3%	11%
grade 1 events	59	64	201	44	69	105
	0%	0%	0%	0%	0%	0%
grade 2 events	2534	2564	24199	3179	14311	6368
	2%	2%	15%	3%	10%	4%
grade 3 events	994	1033	2291	1085	3316	4642
	1%	1%	1%	1%	2%	3%
grade 4 events	1060	1005	2095	1037	3201	4226
	1%	1%	1%	1%	2%	3%
grade 5 events	3360	3665	6593	3824	7667	4997
	3%	4%	4%	4%	5%	3%
grade 6 events	2022	2009	40903	2271	37366	7161
	2%	2%	26%	2%	27%	5%
grade 7 events	73711	72480	68408	73914	66277	86942
	82%	81%	44%	79%	48%	67%

## 2.2 Compared Parameters

Parameter	Planned	Actual	Parameter	Planned	Actual
Instrument	ACIS	ACIS	Obspar format version number	6	6
Detector	ACIS-235678	ACIS-235678	Obspar file type	PREDICTED	ACTUAL
Grating	NONE	NONE	Obspar update status	NONE	UPDATED
Data mode	FAINT	FAINT	Number of optional ACIS chips dropped	0	0
Observation mode	POINTING	POINTING	On-chip summing requested	N	N
Pointing RA	339.433480	339.4527222943154	Subarray requested	NONE	NONE
Pointing Dec	18.639189	18.6189389074782	Alternating exposures requested	N	N
Pointing Roll	281.037910	281.1884200935153	Primary exposure time	0.000000	3.2
SIM focus pos (mm)	-0.684267	-0.6828225247311905			
SIM defocus (mm)	0	0.001444936568705701			
SIM translation stage pos (mm)	-190.132523	-190.1425803651734			
SIM translation stage offset (mm)	0	0.01005778216563158			
Observation start time	153468081.184000	153466764.3005			
Observation start date	2002-11-12T06:00:17	2002-11-12T05:39:24			
Observation end time	153483081.184000	153483887.43871			
Observation end date	2002-11-12T10:10:17	2002-11-12T10:24:47			
Read mode	TIMED	TIMED			

2.3 Aspect





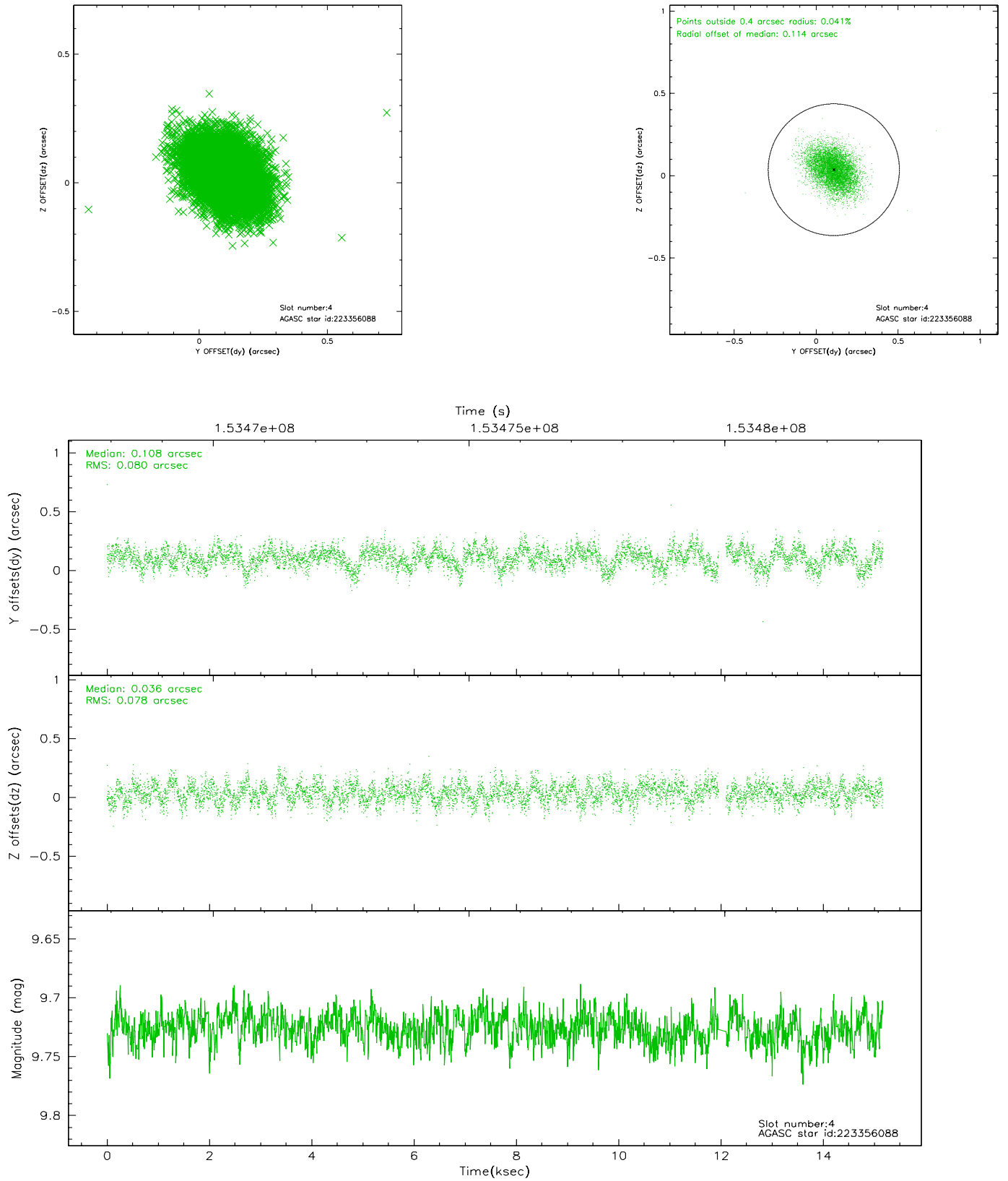
### Slot Statistics

slot	status	id	mag	n_pts	med_dy	med_dz	dr1	dr2	ra	dec	mean_y	mean_z
0	FID	ACIS-S-2	7.11	3698	-0.009	0.022	0.007	0.012	0.000000	0.000000	-755.82	-1728.19
1	FID	ACIS-S-4	7.20	3698	-0.031	-0.002	0.005	0.009	0.000000	0.000000	2157.29	179.98
2	FID	ACIS-S-5	7.24	3697	0.008	-0.011	0.006	0.011	0.000000	0.000000	-1808.27	173.96
3	OMITTED		0.00	0	0.000	0.000	0.000	0.000	0.000000	0.000000	0.00	0.00
4	GUIDE	223356088	9.73	7318	0.108	0.036	0.119	0.194	339.905828	18.773691	-168.49	1673.35
5	GUIDE	222822536	9.45	7391	0.302	0.114	0.115	0.188	339.751978	18.032867	2351.01	653.22
6	GUIDE	223355216	9.83	7385	0.097	-0.230	0.126	0.201	338.627588	18.983467	-1746.44	-2454.50
7	BAD	223358200	10.05	7114	-0.531	0.077	0.180	0.277	339.089132	19.217848	-2268.88	-750.55

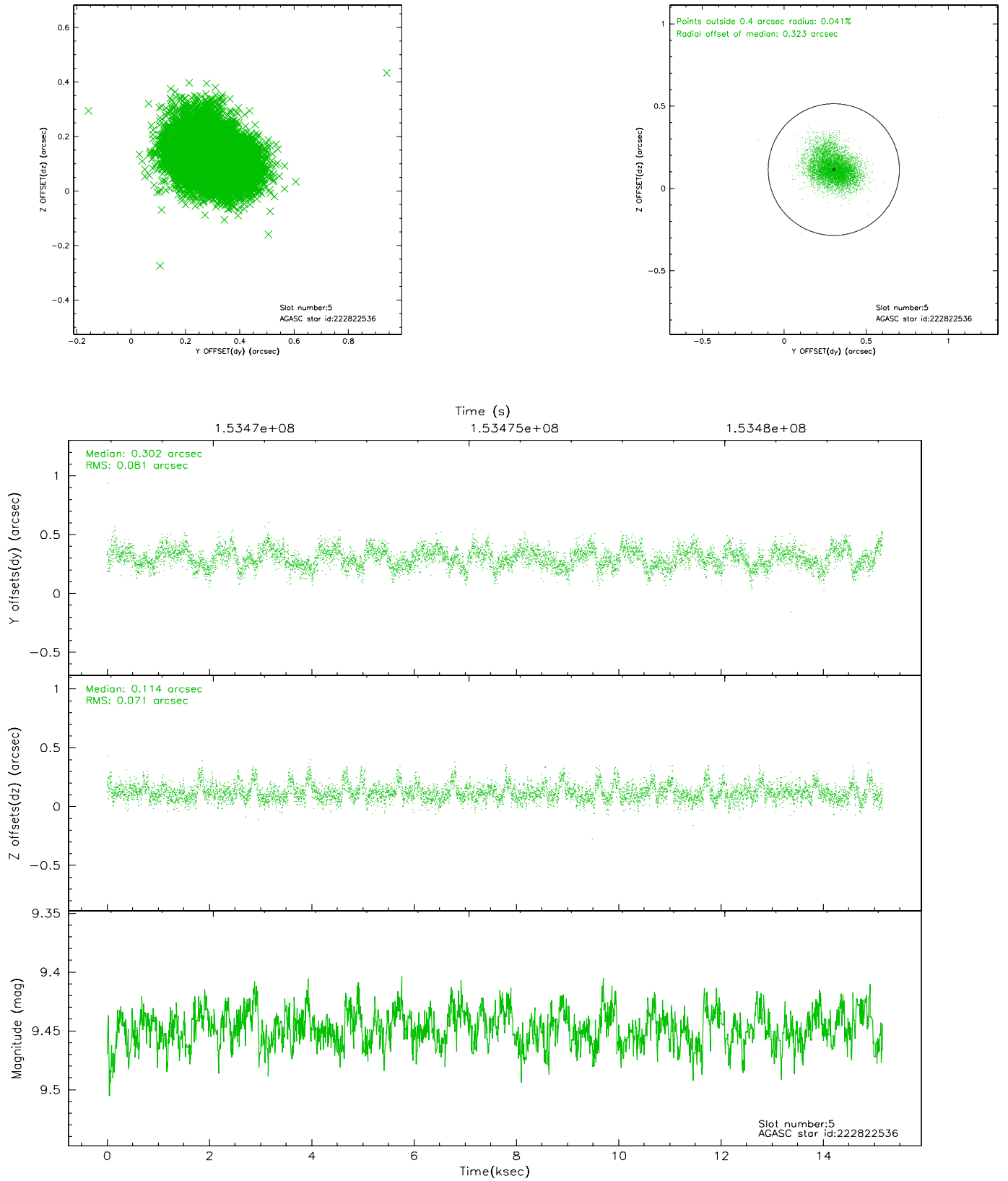


## 2.4 Star Slots

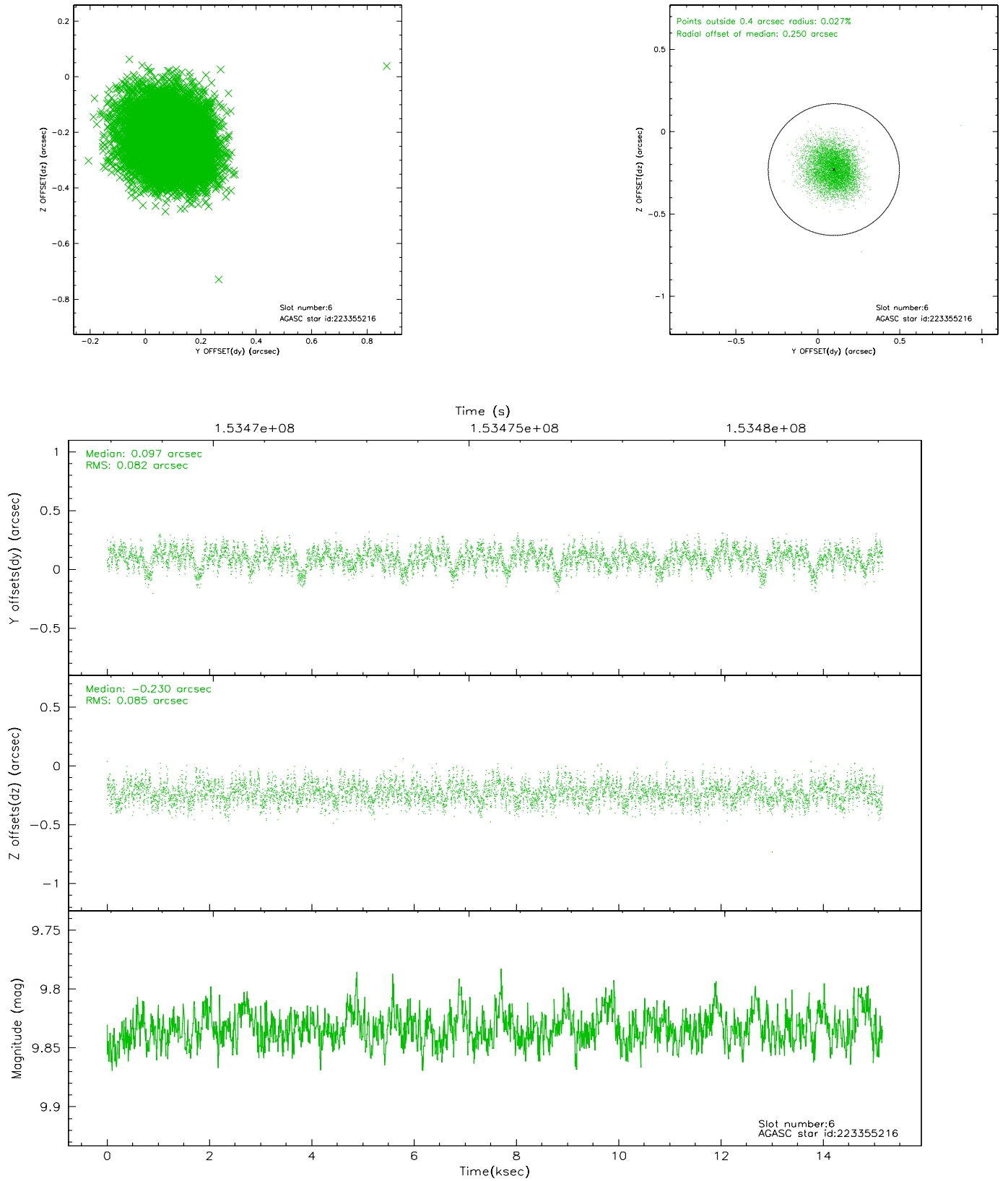
### 2.4.1 Slot 4



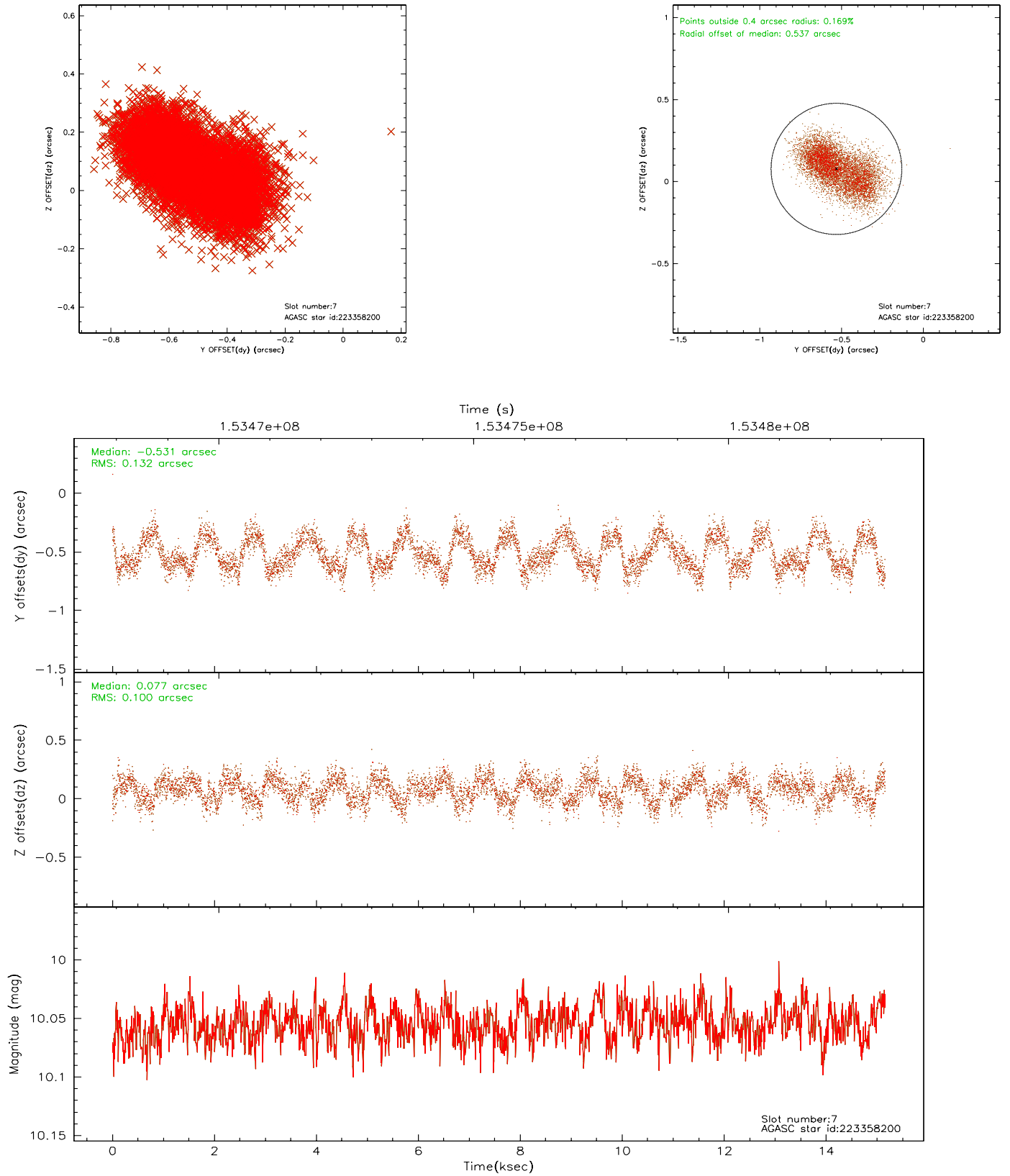
## 2.4.2 Slot 5



### 2.4.3 Slot 6

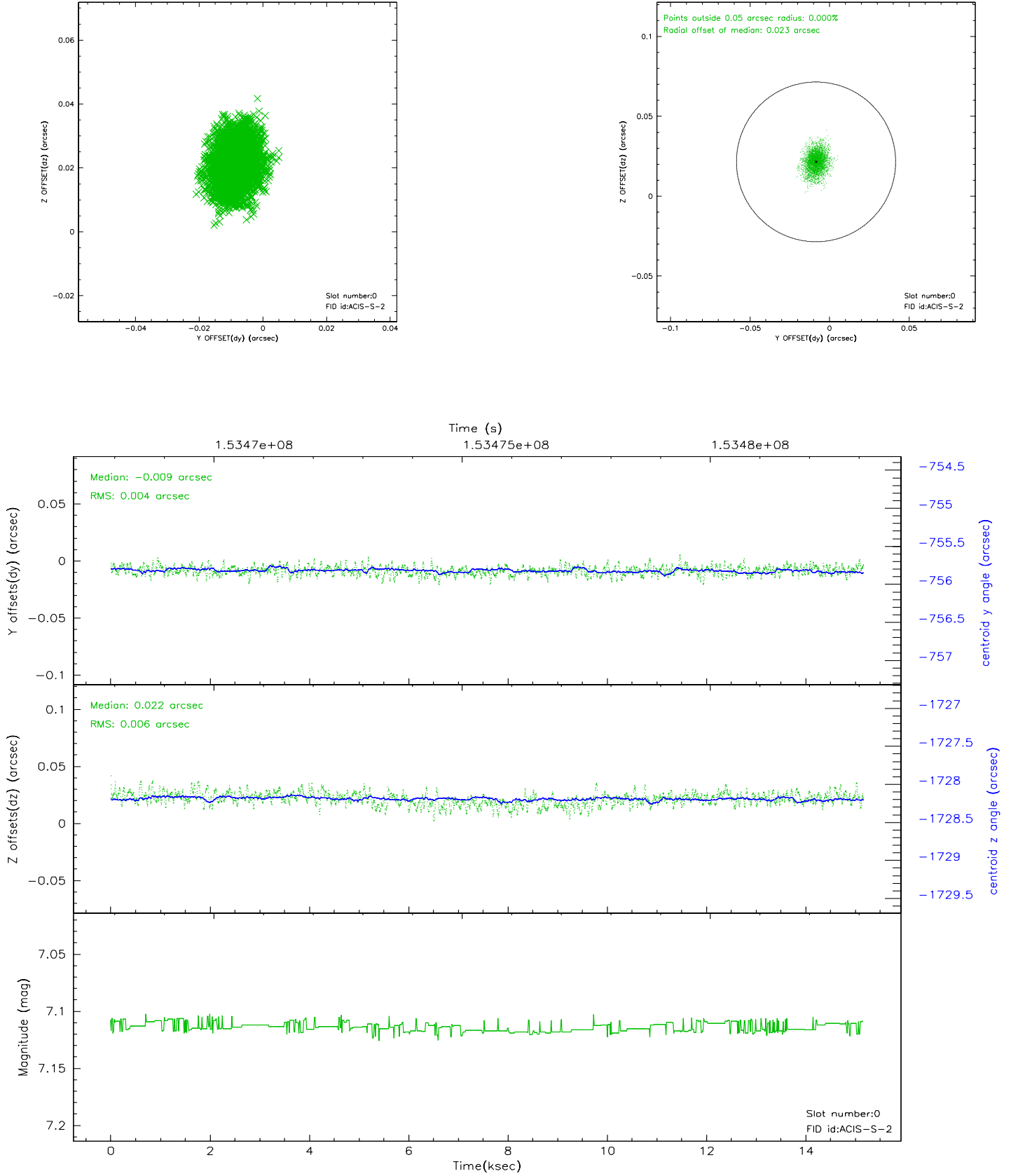


## 2.4.4 Slot 7

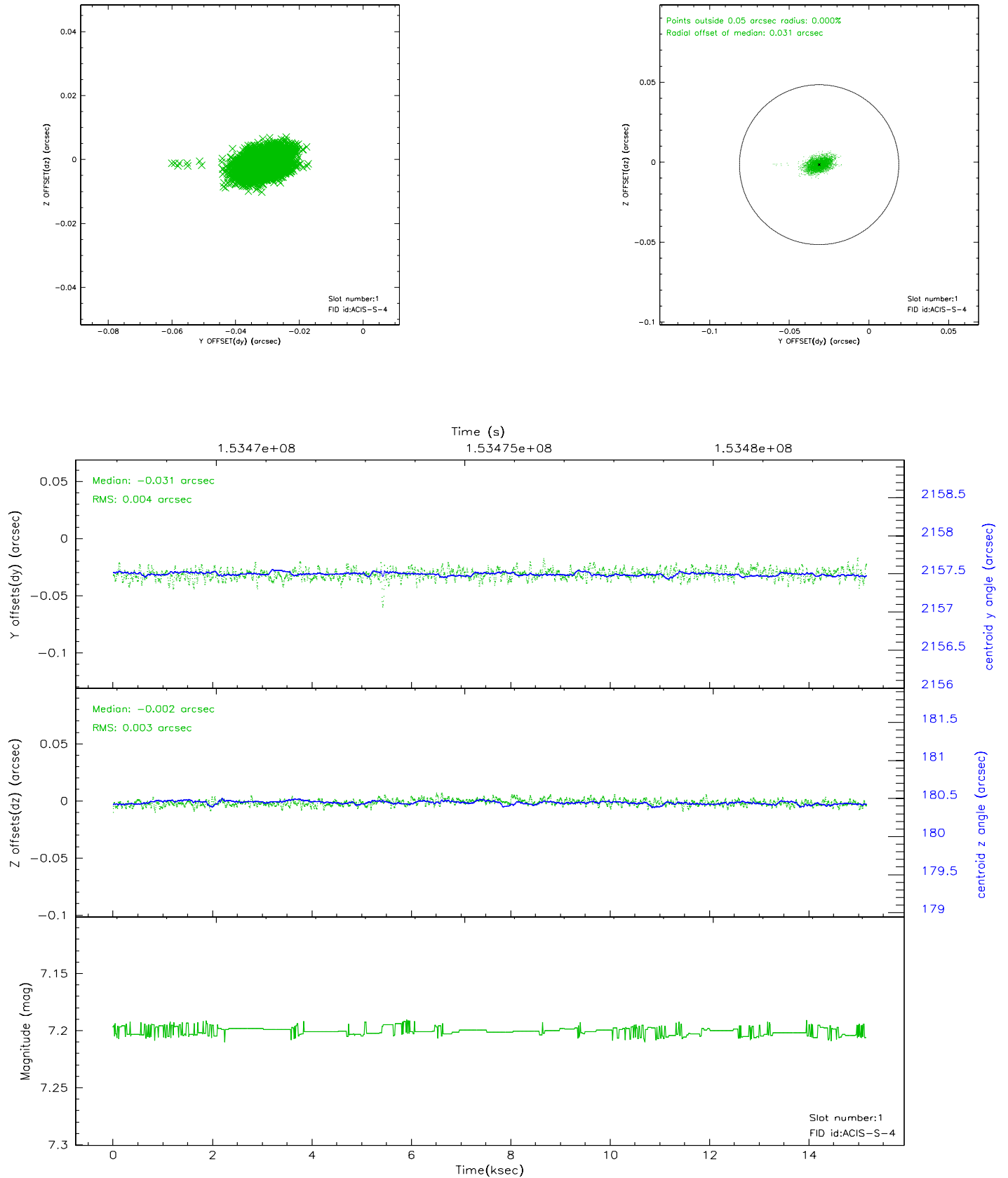


## 2.5 FID Slots

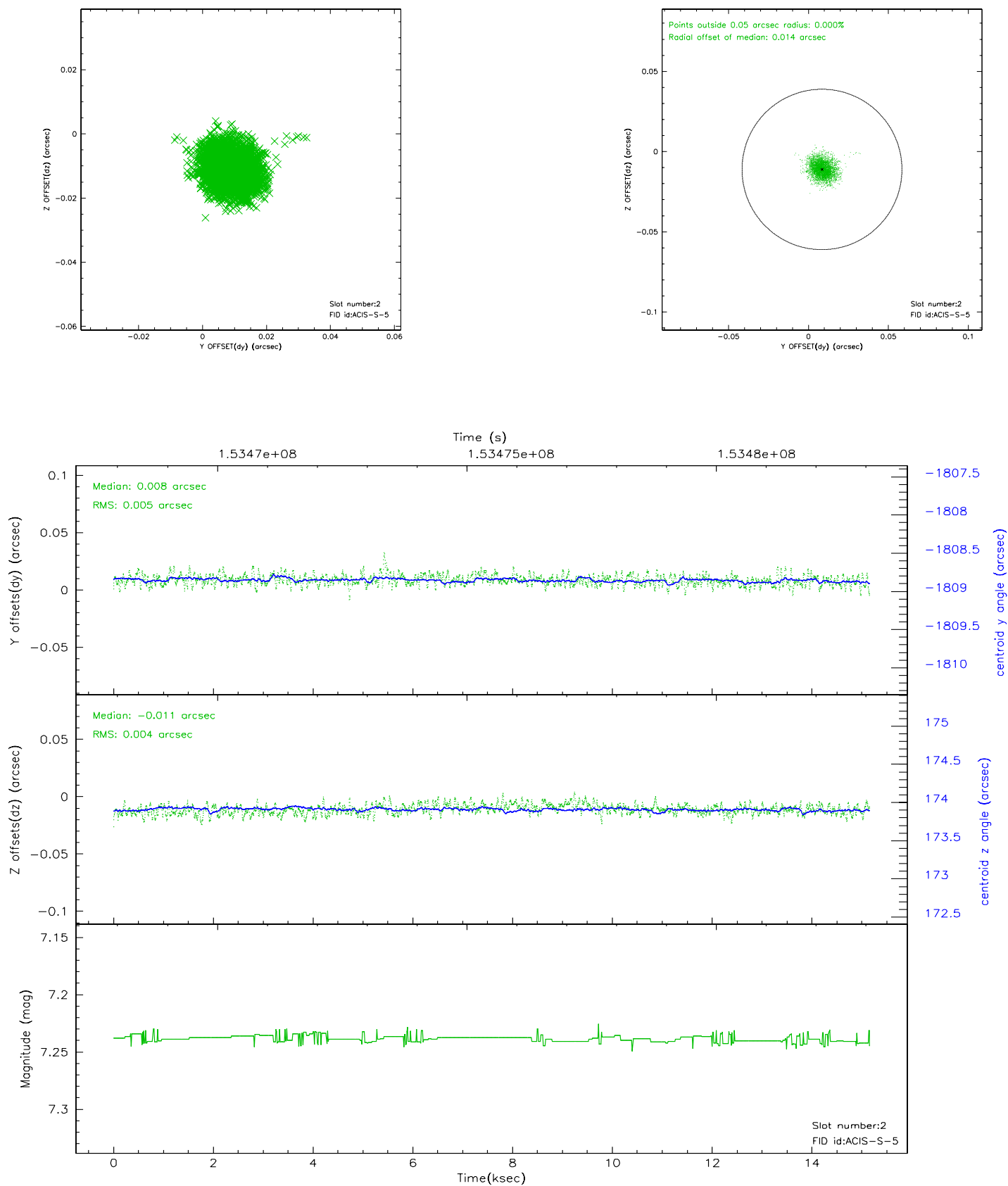
### 2.5.1 Slot 0



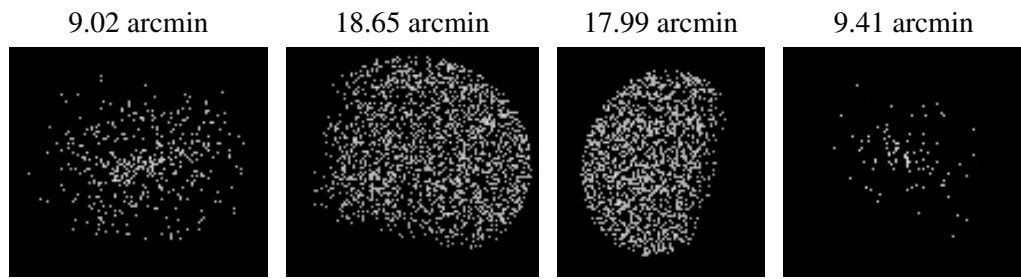
## 2.5.2 Slot 1



### 2.5.3 Slot 2



### 3 Point Sources





# A Summary

## A.1 Status

V&V Scientist	Jen Lauer
V&V Date (YYYY-MM-DD)	2010.10.01
V&V Edition	2
V&V Disposition and Status	OK
V&V Charge Time	14.735

## A.2 Comments

The guide stars in slots 3 was manually excluded from the processing due to poor data quality.