

# V&V Reference Report

## L2 ASCDS Version : 7.6.9

Observation 2991 - L2 Version 001  
Chandra X-Ray Center

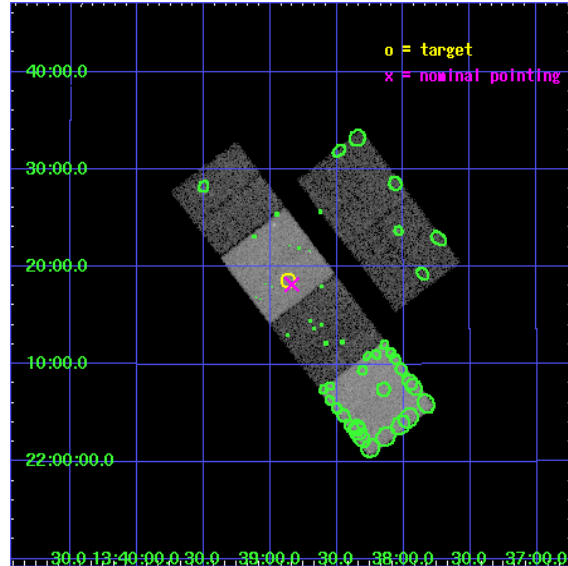
L2 Processing Date : Sep 19 2006

## Contents

<b>1</b>	<b>Front</b>	<b>2</b>
<b>2</b>	<b>OBI</b>	<b>3</b>
2.1	OBI . . . . .	3
2.1.1	Images . . . . .	3
2.1.2	Bias . . . . .	3
2.1.3	Parameters . . . . .	4
2.1.4	Events . . . . .	4
2.2	Compared Parameters . . . . .	5
2.3	Aspect . . . . .	6
2.4	Star Slots . . . . .	9
2.4.1	Slot 3 . . . . .	9
2.4.2	Slot 4 . . . . .	10
2.4.3	Slot 5 . . . . .	11
2.4.4	Slot 6 . . . . .	12
2.4.5	Slot 7 . . . . .	13
2.5	FID Slots . . . . .	14
2.5.1	Slot 0 . . . . .	14
2.5.2	Slot 1 . . . . .	15
2.5.3	Slot 2 . . . . .	16
<b>3</b>	<b>Point Sources</b>	<b>17</b>
<b>A</b>	<b>Summary</b>	<b>18</b>
A.1	Status . . . . .	18
A.2	Comments . . . . .	18

# 1 Front

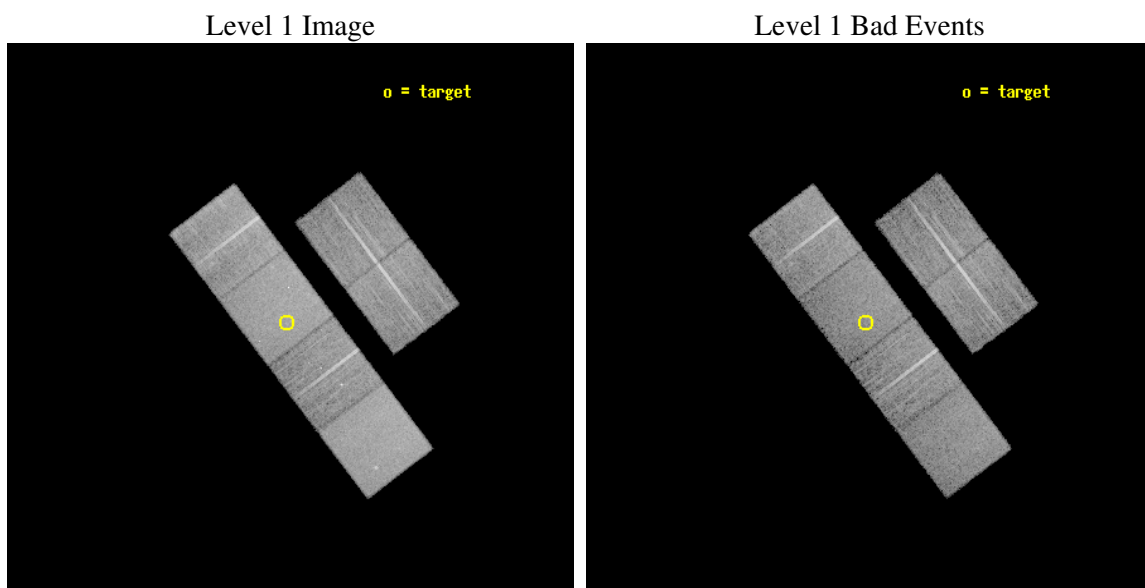
seq_num	700430
obs_id	2991
title	CHANDRA OBSERVATIONS OF A POPULATION OF TYPE 2 QUASARS DISCOVERED IN THE DPOSS
observer	PROF. S. DJORGOVSKI
object	PSS 1338+2218
dtcycle	0
cycle	P
ra_targ	204.717083
dec_targ	22.31
ra_nom	204.70937378261
dec_nom	22.303447096233
roll_nom	232.72574539232
revision	2
ontime	14460.799946129
livetime	14277.688589963
ontime2	14460.799946129
ontime3	14460.799946129
ontime5	14460.799946129
ontime6	14460.799946129
ontime7	14460.799946129
ontime8	14460.799946129
l2events	139709



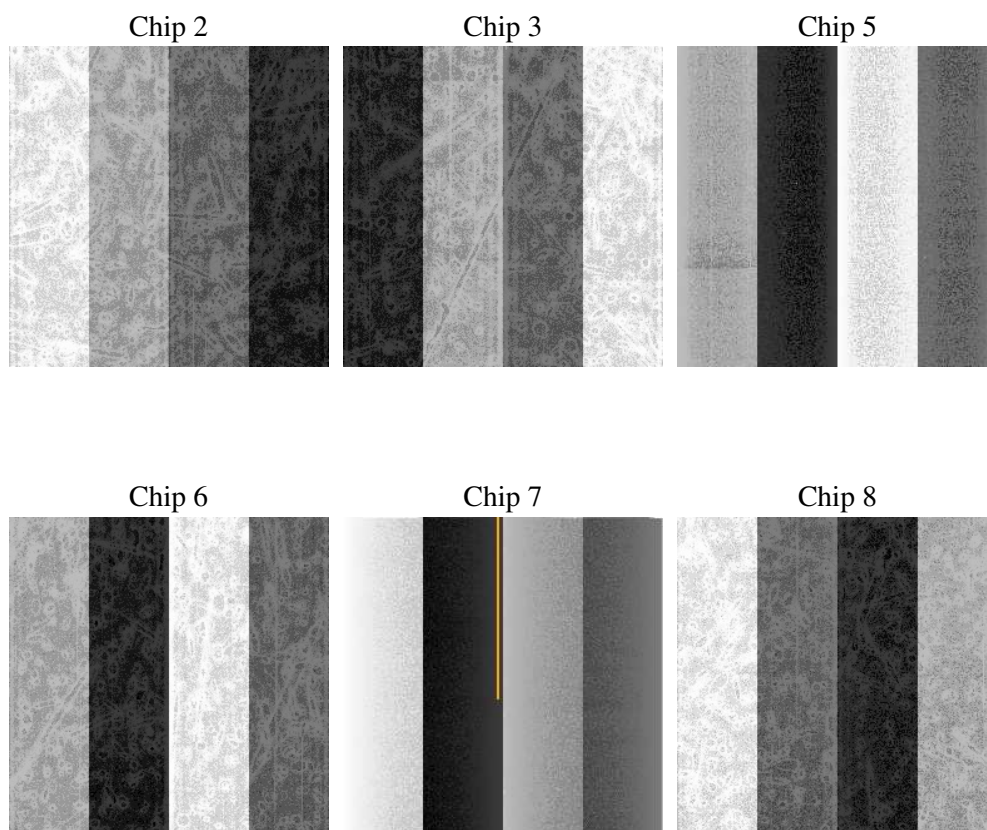
## 2 OBI

### 2.1 OBI

#### 2.1.1 Images



#### 2.1.2 Bias



### 2.1.3 Parameters

obi_num	0
ascdsver	7.6.9
caldbver	3.2.3
date	2006-09-19T08:58:38
revision	2

sched_exp_time	14500.000000
ontime	14464.585321575
ontime2	14464.585291684
ontime3	14464.585291684
ontime5	14464.585291684
ontime6	14464.585291684
ontime7	14464.585321575
ontime8	14464.585291684
l1events	646279

### 2.1.4 Events

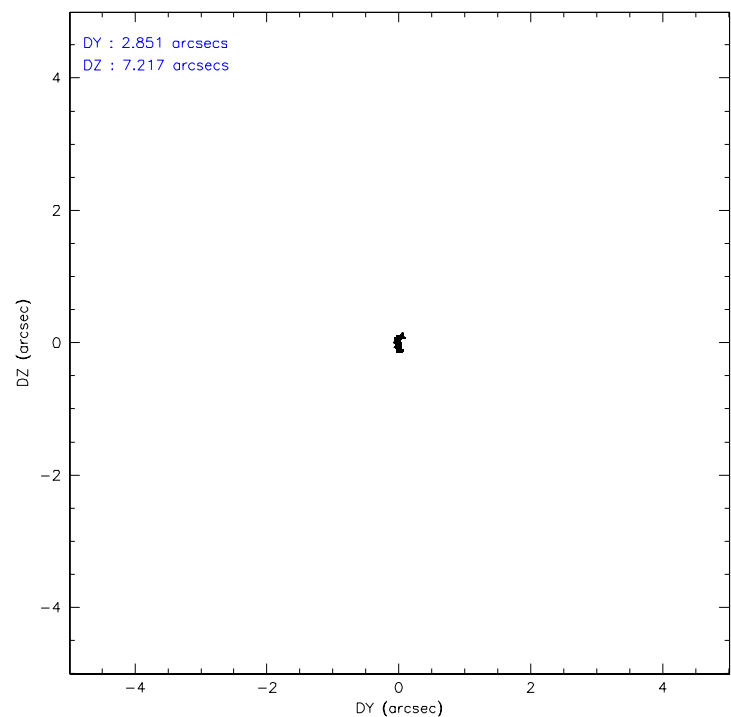
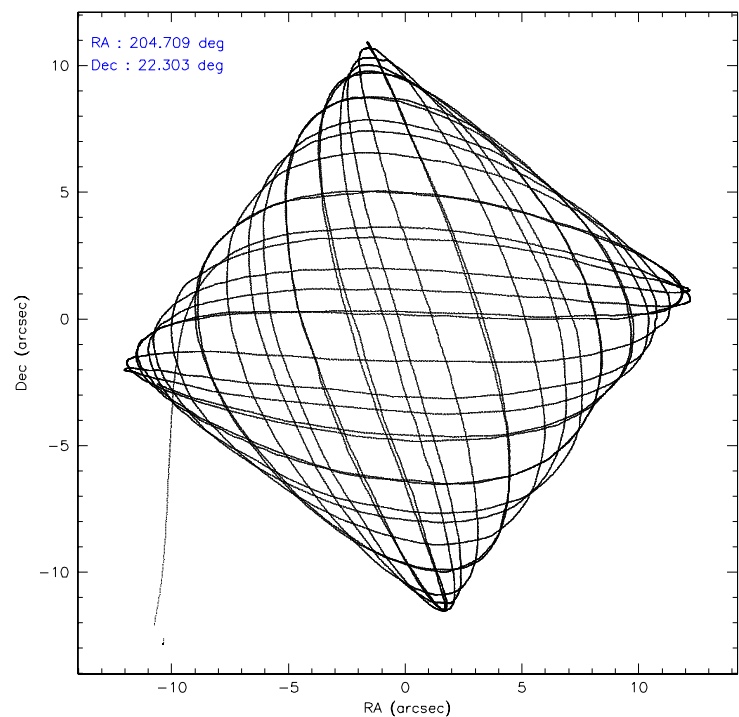
	ccd 2	ccd 3	ccd 5	ccd 6	ccd 7	ccd 8
level 1 events	96104	88352	129927	92482	121783	117631
rejected events	85507	77948	73855	80956	74530	93339
rejected %	88%	88%	56%	87%	61%	79%

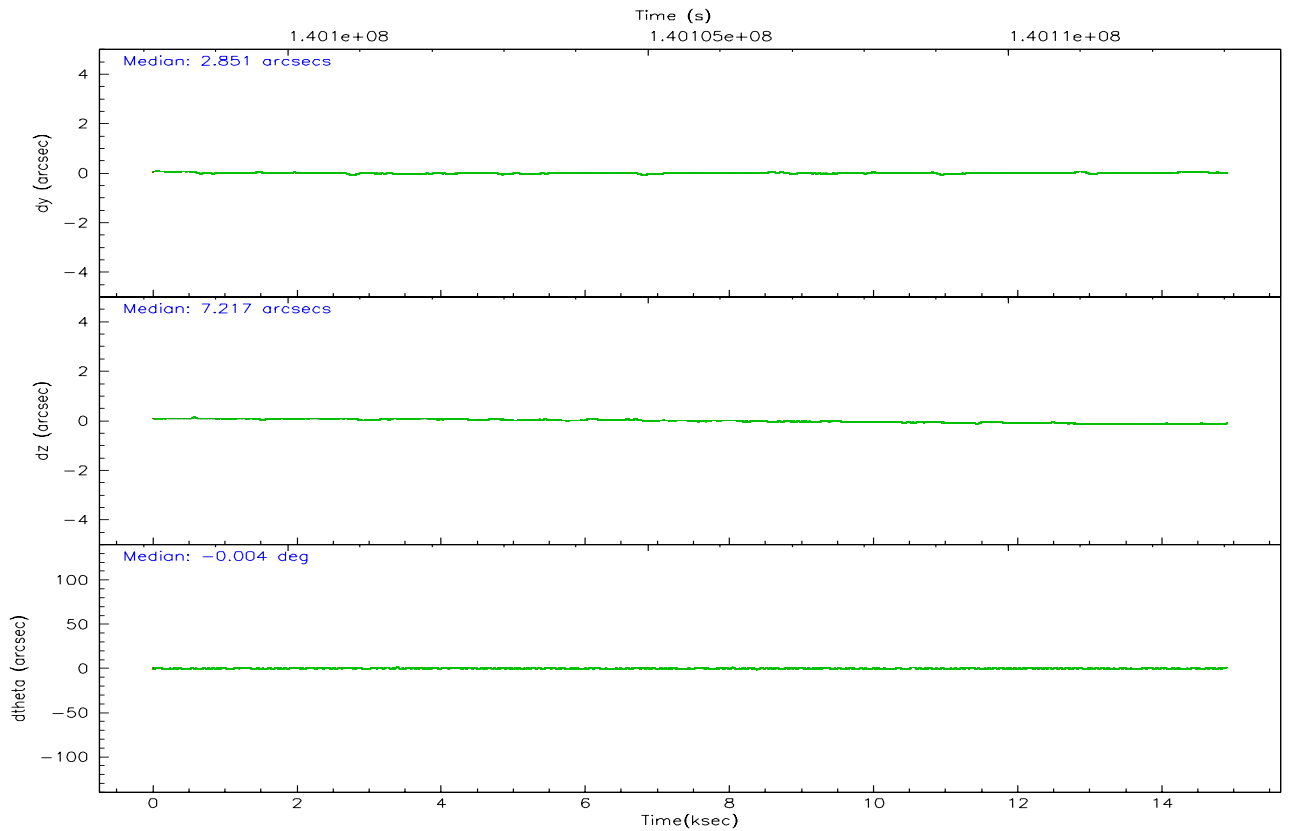
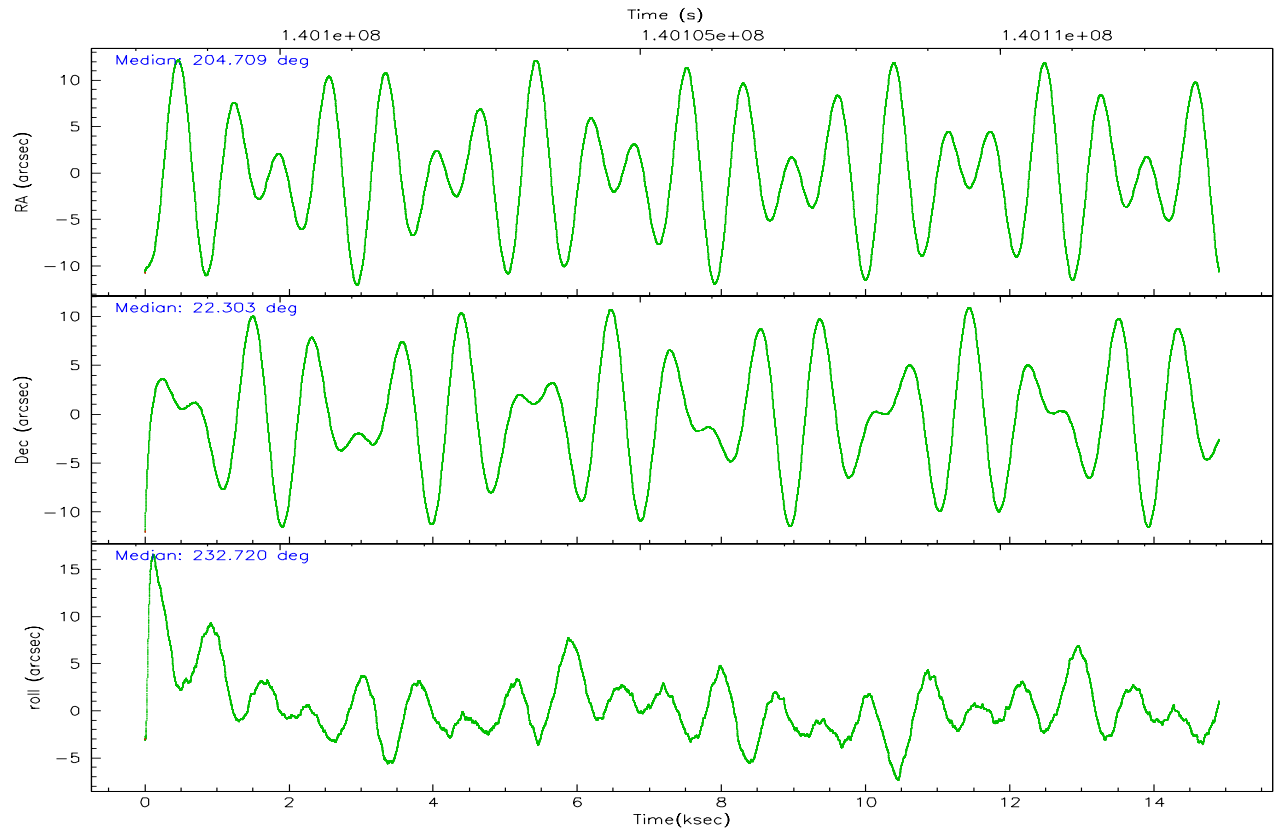
	ccd 2	ccd 3	ccd 5	ccd 6	ccd 7	ccd 8
grade 0 events	4464	4342	2664	5029	3150	7564
	4%	4%	2%	5%	2%	6%
grade 1 events	43	42	106	50	73	72
	0%	0%	0%	0%	0%	0%
grade 2 events	2310	2084	17613	2231	11785	5187
	2%	2%	13%	2%	9%	4%
grade 3 events	989	1001	1366	1070	2451	2788
	1%	1%	1%	1%	2%	2%
grade 4 events	987	1009	1179	1025	2460	2565
	1%	1%	0%	1%	2%	2%
grade 5 events	3411	3744	6097	3941	8040	5155
	3%	4%	4%	4%	6%	4%
grade 6 events	1850	1969	33266	2173	27414	6192
	1%	2%	25%	2%	22%	5%
grade 7 events	82050	74161	67636	76963	66410	88108
	85%	83%	52%	83%	54%	74%

## 2.2 Compared Parameters

Parameter	Planned	Actual	Parameter	Planned	Actual
Instrument	ACIS	ACIS	Obspar format version number	6	6
Detector	ACIS-235678	ACIS-235678	Obspar file type	PREDICTED	ACTUAL
Grating	NONE	NONE	Obspar update status	NONE	UPDATED
Data mode	FAINT	FAINT	Number of optional ACIS chips dropped	0	0
Observation mode	POINTING	POINTING	On-chip summing requested	N	N
Pointing RA	204.712719	204.7093737826063	Subarray requested	NONE	NONE
Pointing Dec	22.330506	22.30344709623259	Alternating exposures requested	N	N
Pointing Roll	232.567866	232.725745392317	Primary exposure time	0.000000	3.2
SIM focus pos (mm)	-0.684267	-0.6828225247311905			
SIM defocus (mm)	0	0.001444936568705701			
SIM translation stage pos (mm)	-190.132523	-190.1400660498719			
SIM translation stage offset (mm)	0	0.00754346686406393			
Observation start time	140098536.184000	140097463.76144			
Observation start date	2002-06-10T12:14:32	2002-06-10T11:57:43			
Observation end time	140113036.184000	140113279.51208			
Observation end date	2002-06-10T16:16:12	2002-06-10T16:21:19			
Read mode	TIMED	TIMED			

### 2.3 Aspect





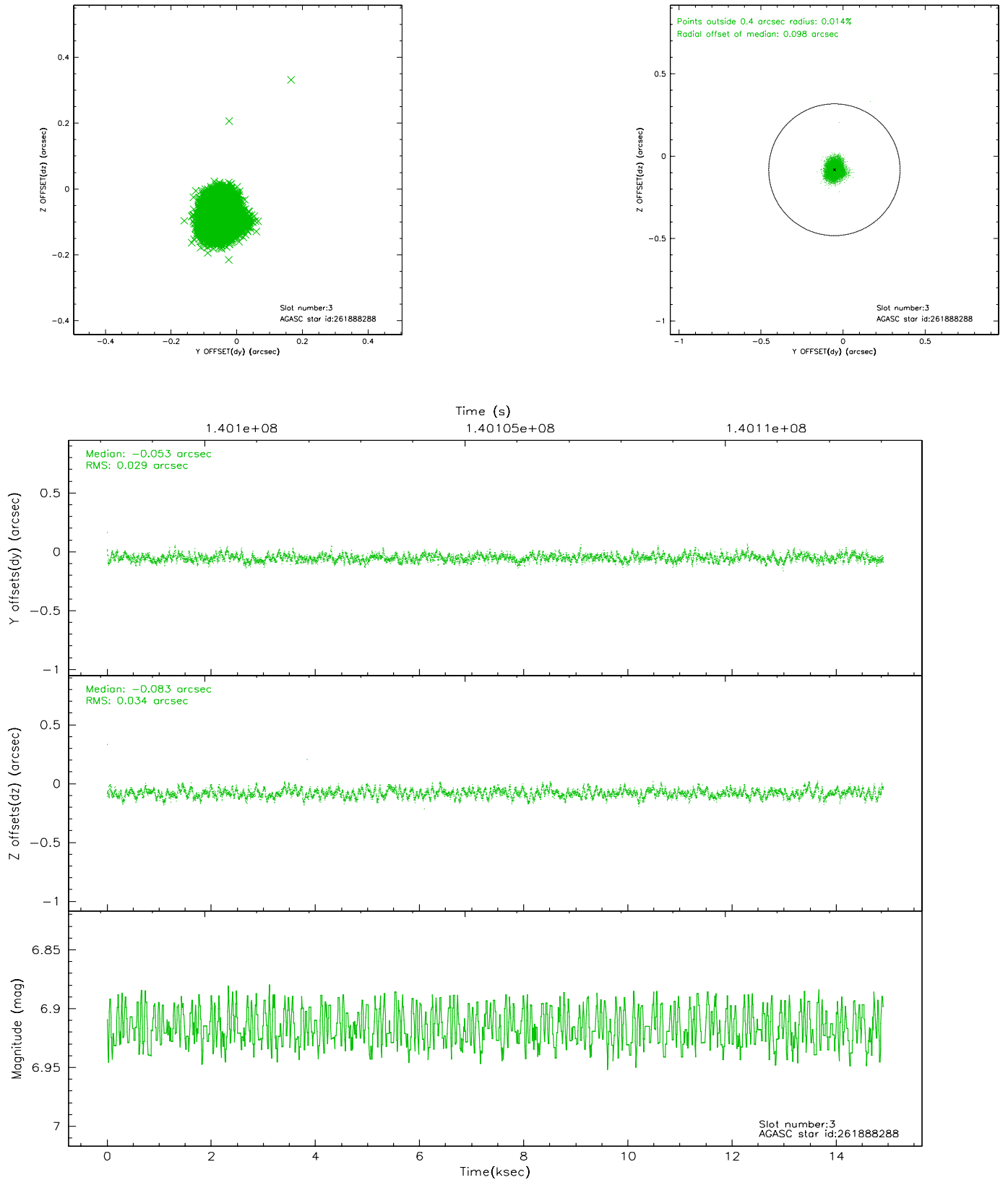
### Slot Statistics

slot	status	id	mag	n_pts	med_dy	med_dz	dr1	dr2	ra	dec	mean_y	mean_z
0	FID	ACIS-S-2	7.11	3635	0.022	0.033	0.005	0.010	0.000000	0.000000	-755.46	-1728.35
1	FID	ACIS-S-4	7.20	3635	-0.039	-0.007	0.006	0.009	0.000000	0.000000	2157.61	179.79
2	FID	ACIS-S-6	7.36	3636	-0.011	-0.019	0.007	0.011	0.000000	0.000000	406.87	817.51
3	GUIDE	261888288	6.92	7270	-0.053	-0.083	0.047	0.076	204.503837	22.527323	-141.34	-981.84
4	GUIDE	192025616	7.24	7270	-0.060	0.122	0.050	0.078	205.088062	22.232564	-482.66	1207.42
5	GUIDE	261890312	9.04	7265	-0.064	0.060	0.073	0.120	205.075095	22.526341	-1294.55	528.47
6	GUIDE	261887224	8.94	7268	-0.007	-0.045	0.072	0.119	204.668322	22.723274	-1034.24	-975.71
7	GUIDE	192022312	9.59	7261	0.183	-0.053	0.123	0.194	204.106736	21.928413	2375.94	-728.85

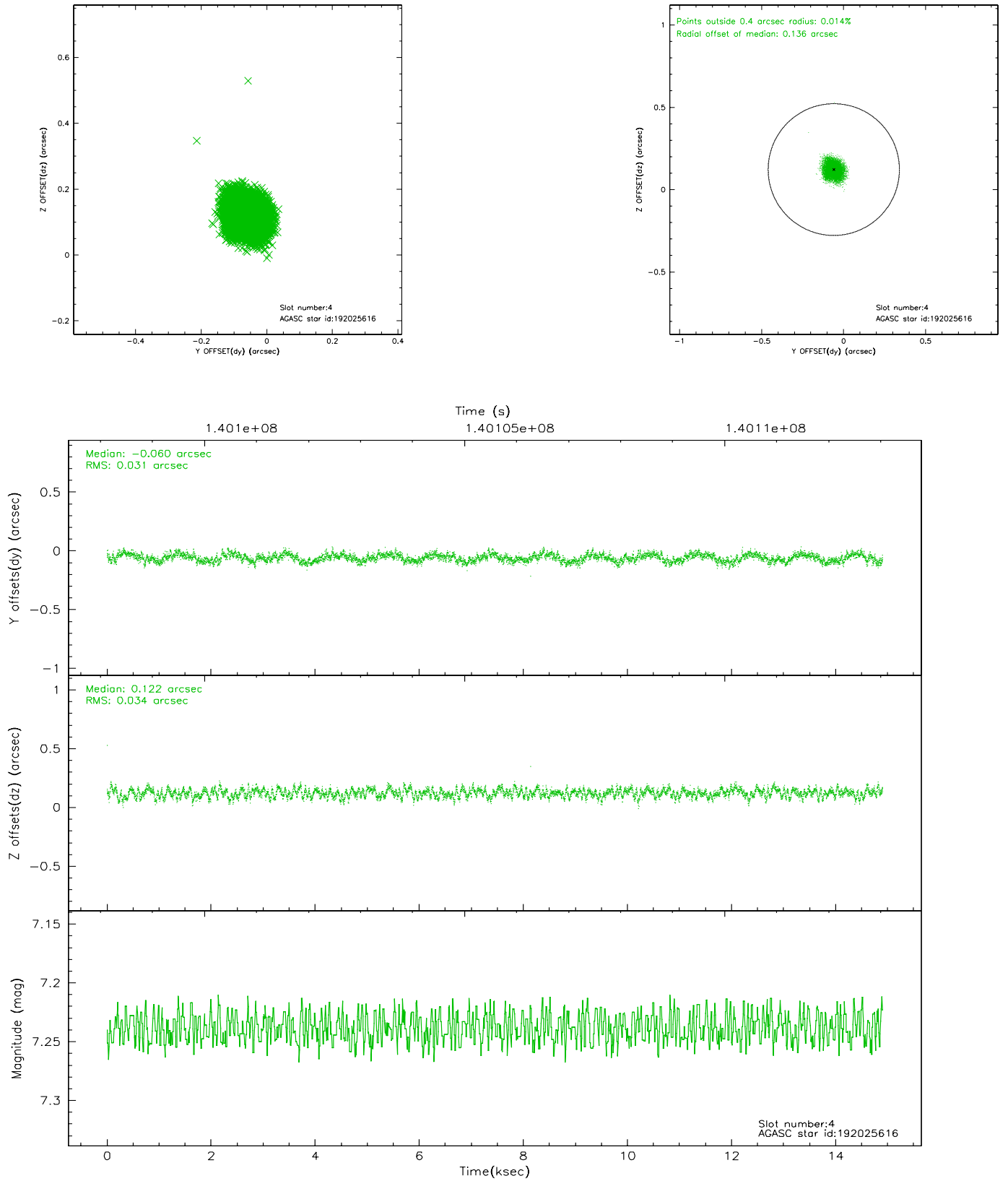


## 2.4 Star Slots

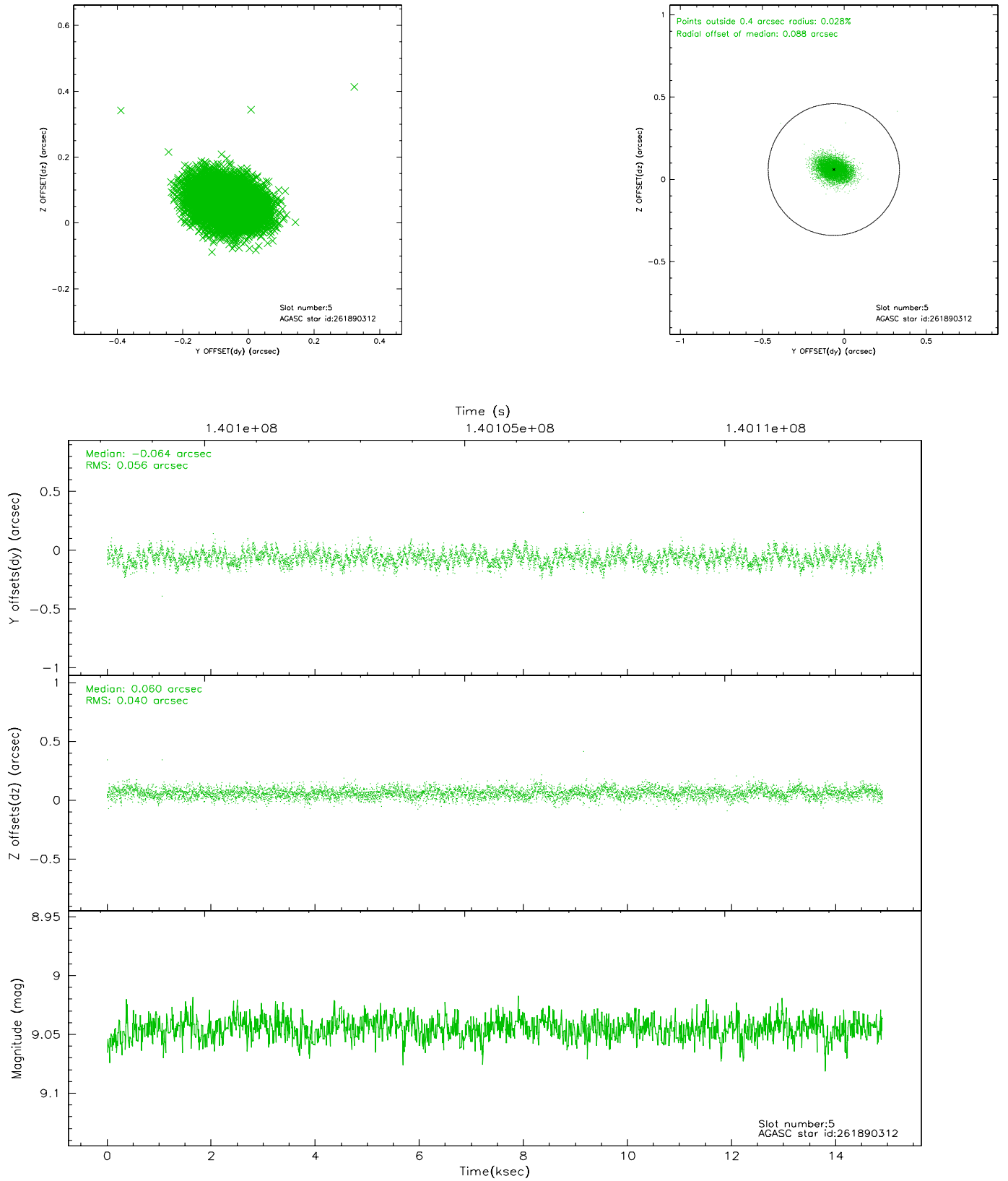
### 2.4.1 Slot 3



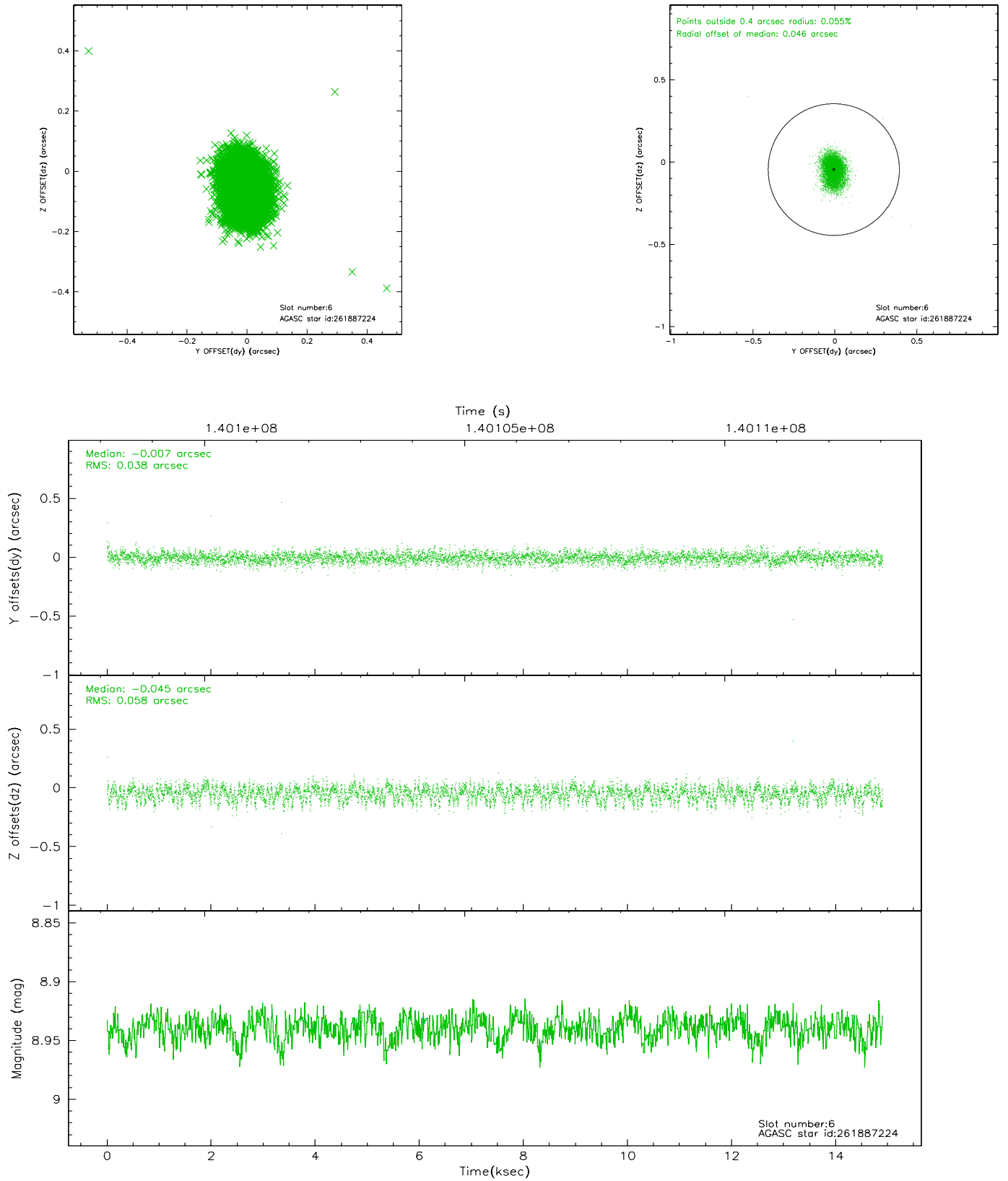
## 2.4.2 Slot 4



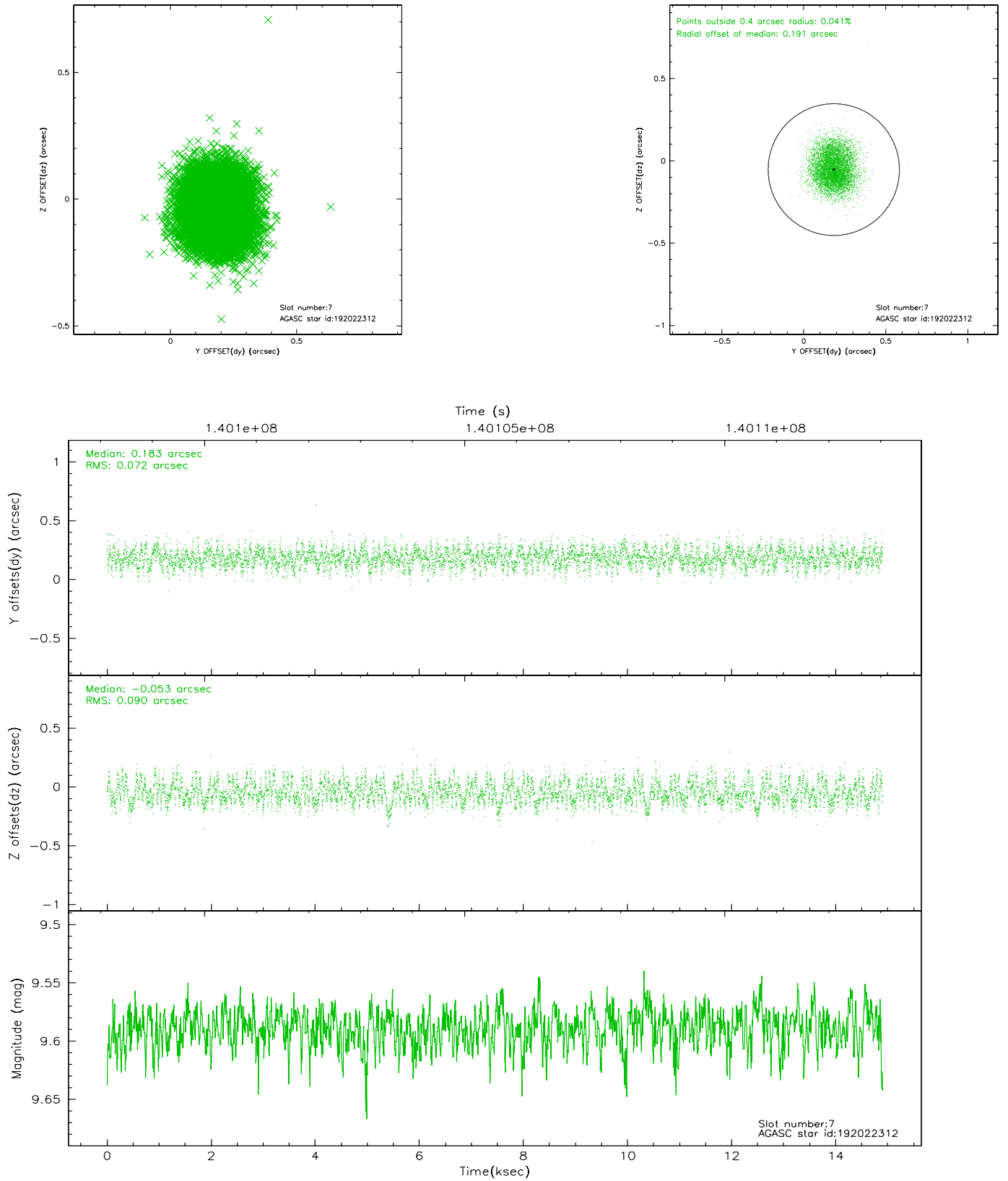
### 2.4.3 Slot 5



## 2.4.4 Slot 6

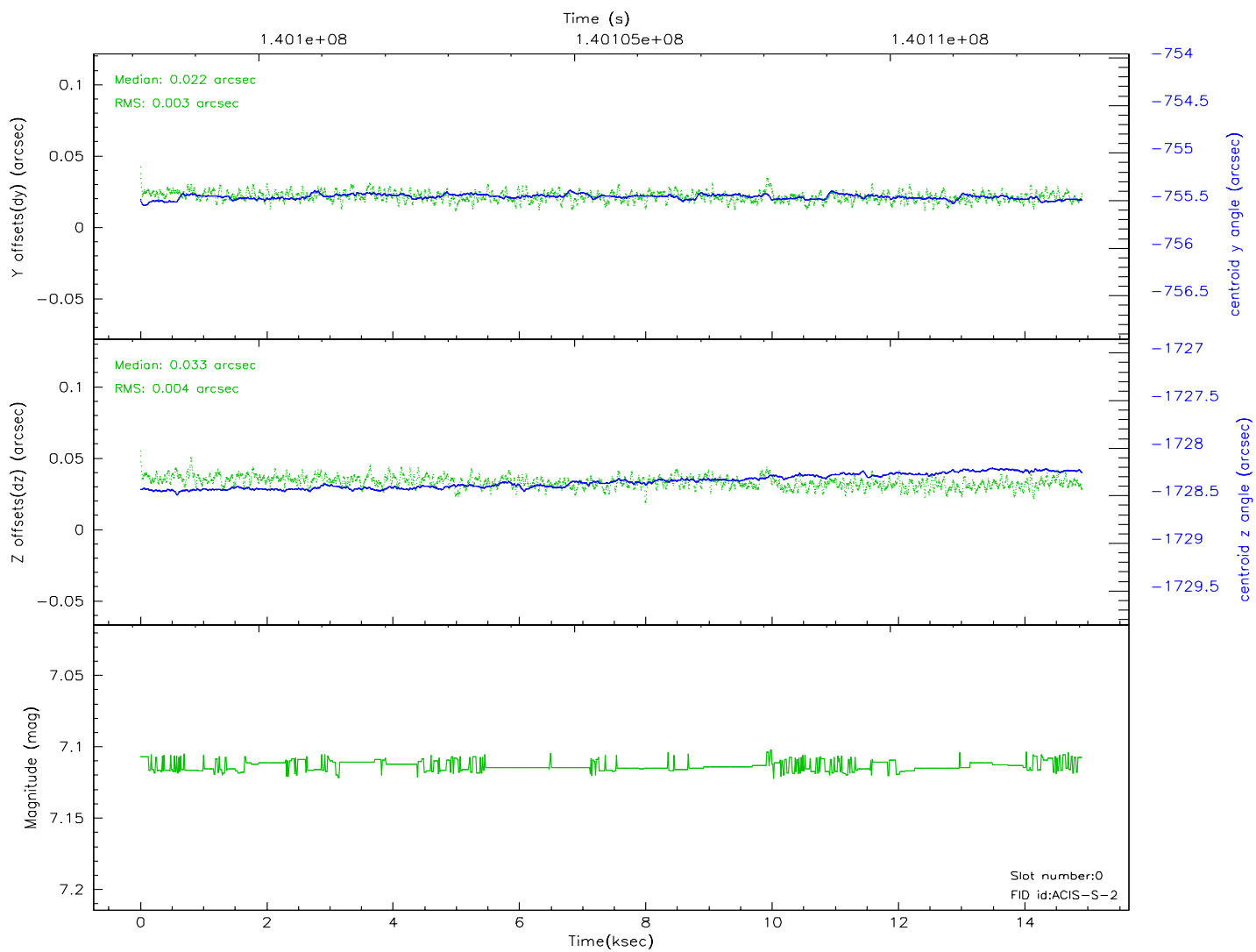
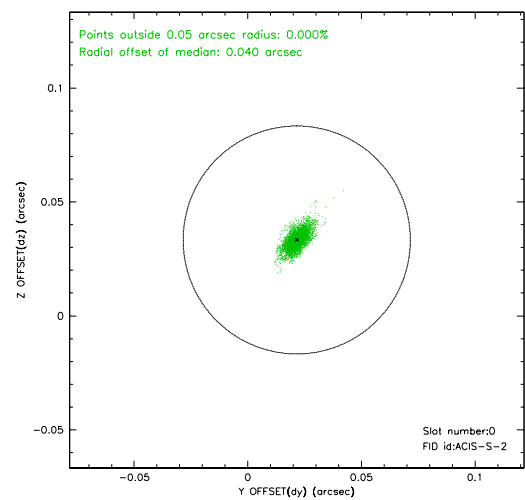
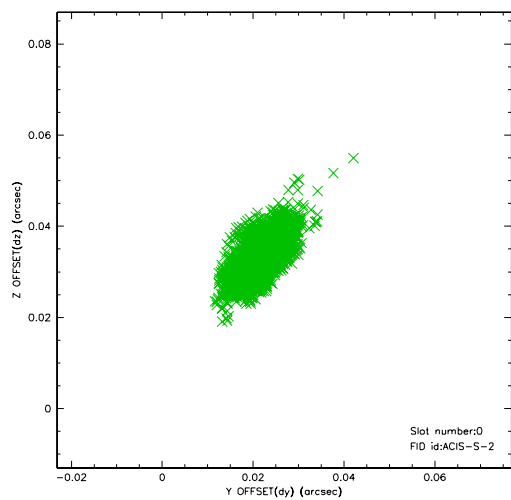


## 2.4.5 Slot 7

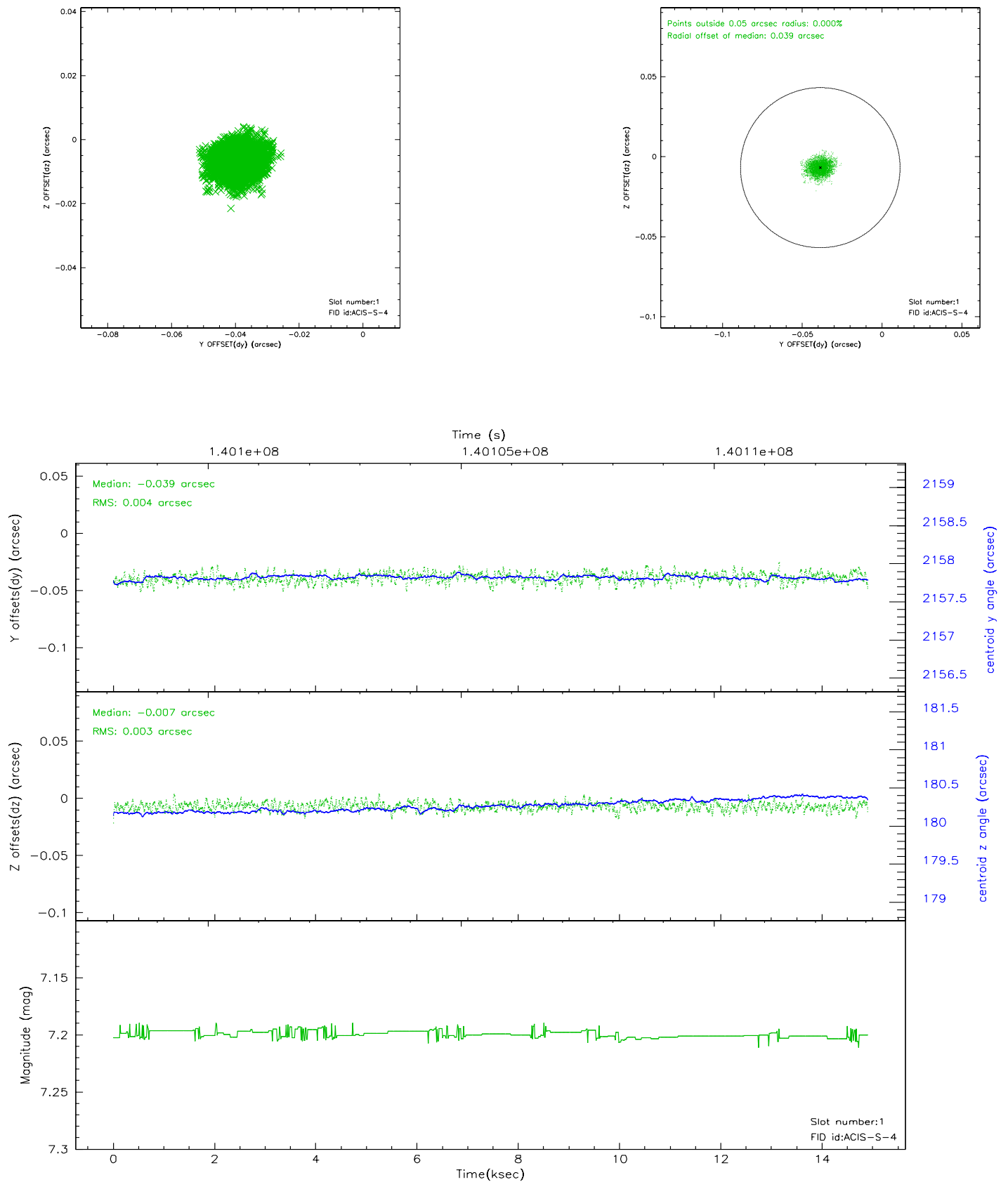


## 2.5 FID Slots

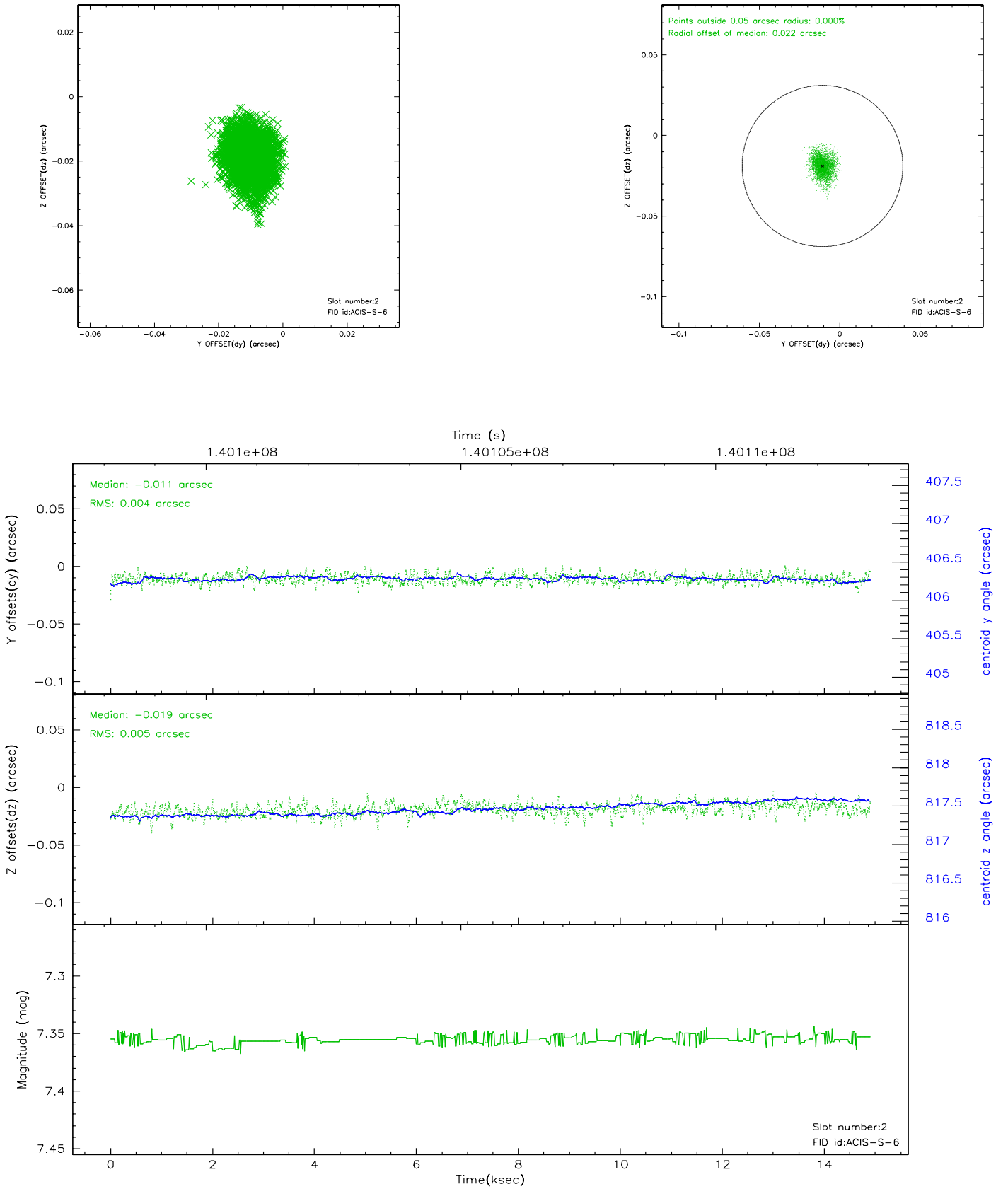
### 2.5.1 Slot 0



## 2.5.2 Slot 1

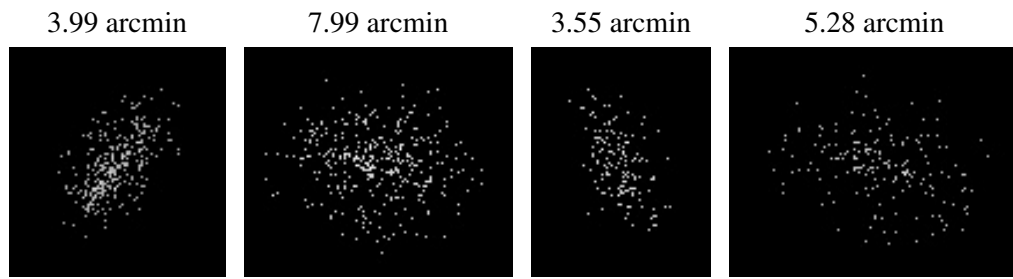


### 2.5.3 Slot 2





### 3 Point Sources



## A Summary

### A.1 Status

V&V Scientist	Jen Lauer
V&V Date (YYYY-MM-DD)	2006.09.19
V&V Edition	1
V&V Disposition and Status	OK
V&V Charge Time	14.46

### A.2 Comments