

V&V Reference Report

L2 ASCDS Version : 8.4.5

Observation 2990 - L2 Version 3
Chandra X-Ray Center

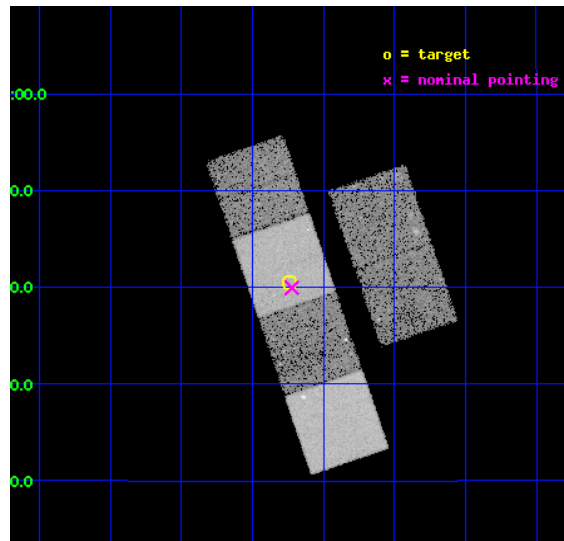
L2 Processing Date : Oct 7 2012

Contents

1	Front	2
2	OBI	3
2.1	OBI	3
2.1.1	Images	3
2.1.2	Bias	3
2.1.3	Parameters	4
2.1.4	Events	4
2.2	Compared Parameters	5
2.3	Aspect	6
2.4	Star Slots	9
2.4.1	Slot 3	9
2.4.2	Slot 4	10
2.4.3	Slot 5	11
2.4.4	Slot 6	12
2.4.5	Slot 7	13
2.5	FID Slots	14
2.5.1	Slot 0	14
2.5.2	Slot 1	15
2.5.3	Slot 2	16
A	Summary	17
A.1	Status	17
A.2	Comments	17

1 Front

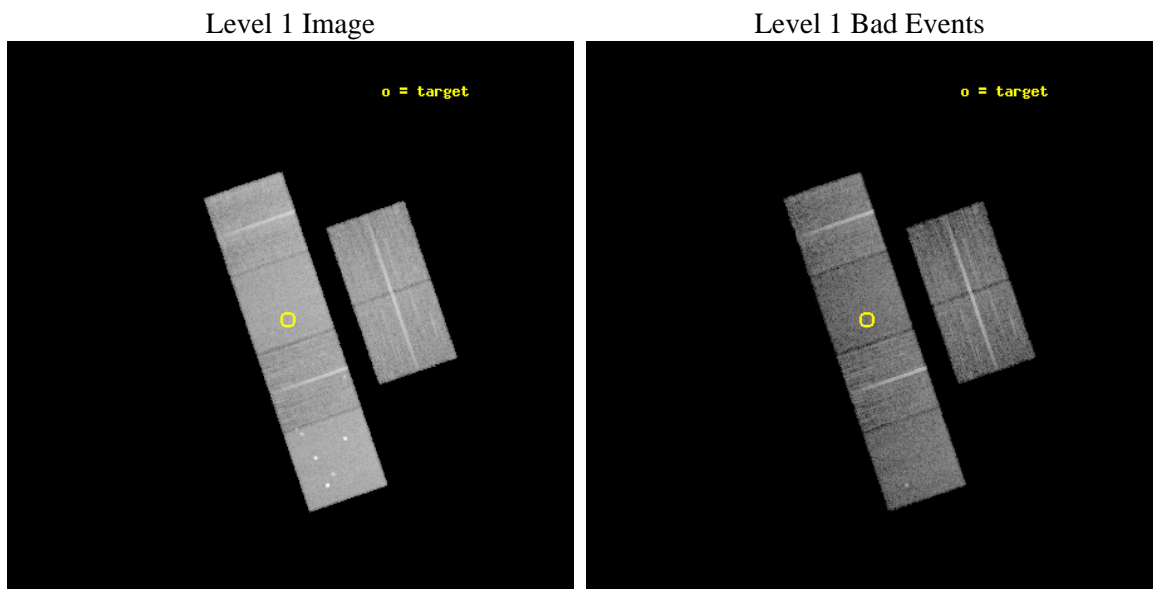
seq_num	700429	Sequence number
obs_id	2990	Observation id
title	CHANDRA OBSERVATIONS OF A POPULATION OF TYPE 2 QUASARS DISCOVERED IN THE DPOSS	Proposal title
observer	PROF. S. DJORGOVSKI	Principal investigator
object	PSS 0958+0740	Source name
dtcycle	0	
cycle	P	events from which exps? Prim/Second/Both
ra_targ	149.685417	Observer's specified target RA [deg]
dec_targ	7.674167	Observer's specified target Dec [deg]
ra_nom	149.6806955705	Nominal RA [deg]
dec_nom	7.6657258373757	Nominal Dec [deg]
roll_nom	251.11289172697	Nominal Roll [deg]
revision	3	Processing version of data
ontime	14319.999946654	Sum of GTIs [s]
livetime	14138.671484861	Livetime [s]
ontime2	14316.7589764	Sum of GTIs [s]
ontime3	14316.7589764	Sum of GTIs [s]
ontime5	14316.7589764	Sum of GTIs [s]
ontime6	14319.999946654	Sum of GTIs [s]
ontime7	14319.999946654	Sum of GTIs [s]
ontime8	14319.999946654	Sum of GTIs [s]
l2events	148589	Number of level 2 events



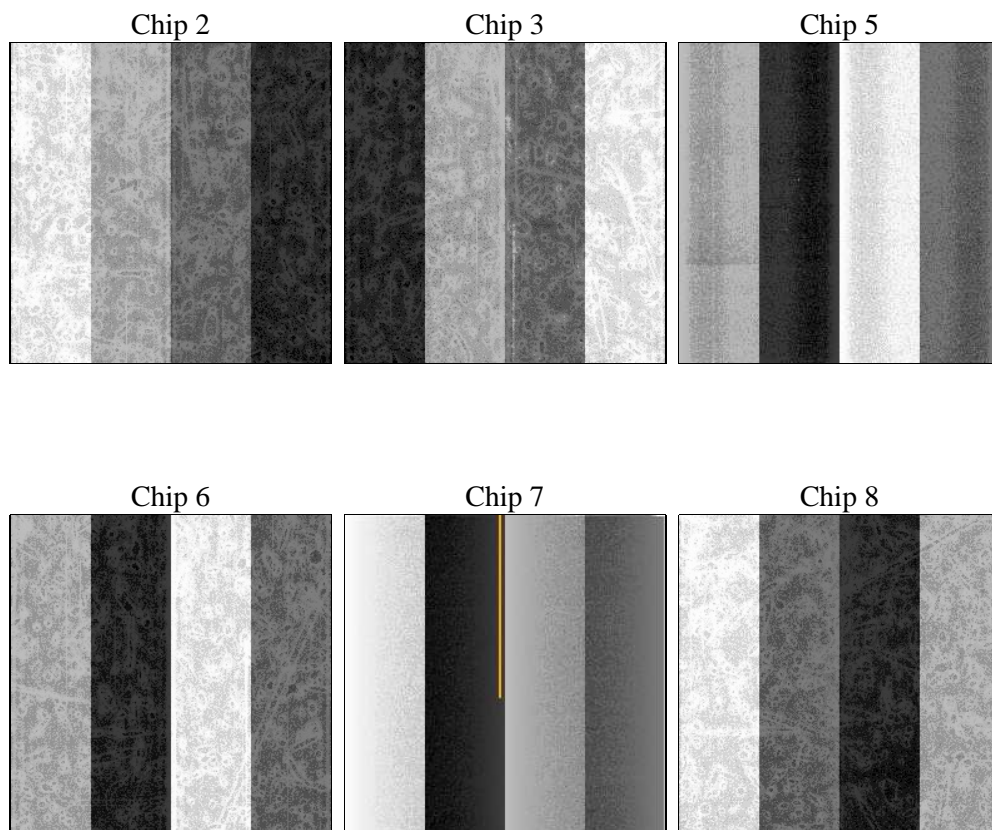
2 OBI

2.1 OBI

2.1.1 Images



2.1.2 Bias



2.1.3 Parameters

obi_num	2	Obi number	sched_exp_time	14165.000000	[s] Scheduled observation exposure time
ascdsver	8.4.5	Processing system revision	ontime	14319.999946654	Sum of GTIs [s]
caldsver	4.5.2	 	ontime2	14316.7589764	Sum of GTIs [s]
date	2012-10-07T08:47:57	Date and time of file creation	ontime3	14316.7589764	Sum of GTIs [s]
revision	3	Processing version of data	ontime5	14316.7589764	Sum of GTIs [s]
			ontime6	14319.999946654	Sum of GTIs [s]
			ontime7	14319.999946654	Sum of GTIs [s]
			ontime8	14319.999946654	Sum of GTIs [s]
			l1events	685923	Number of level 1 events

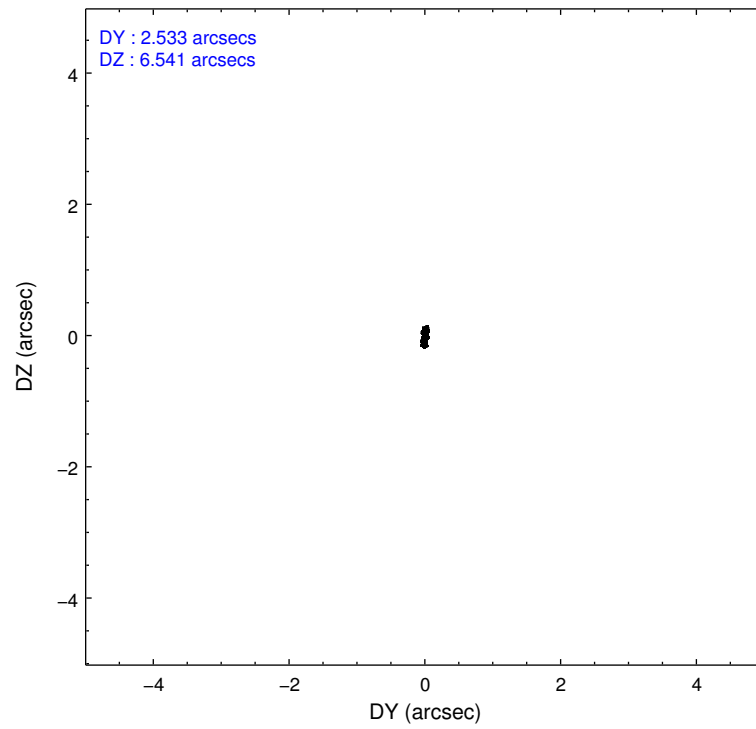
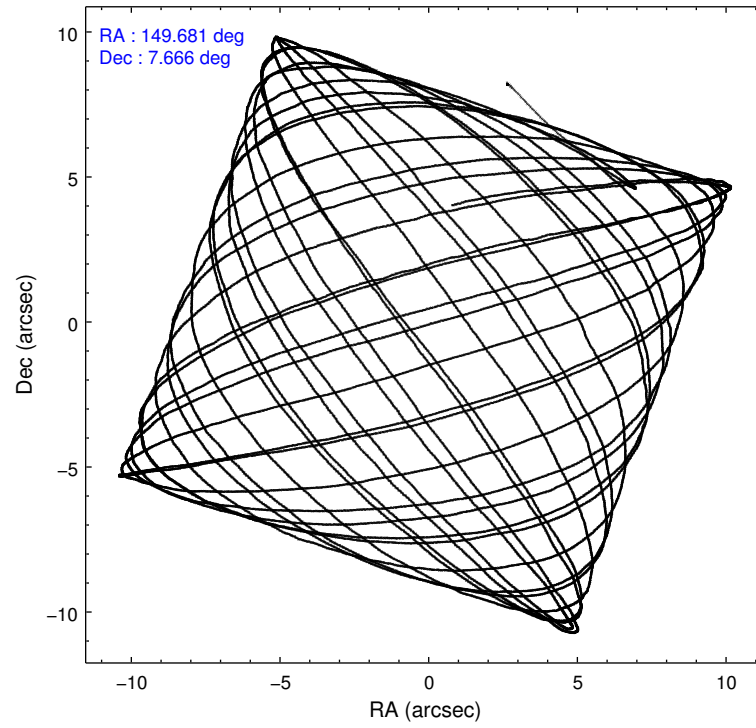
2.1.4 Events

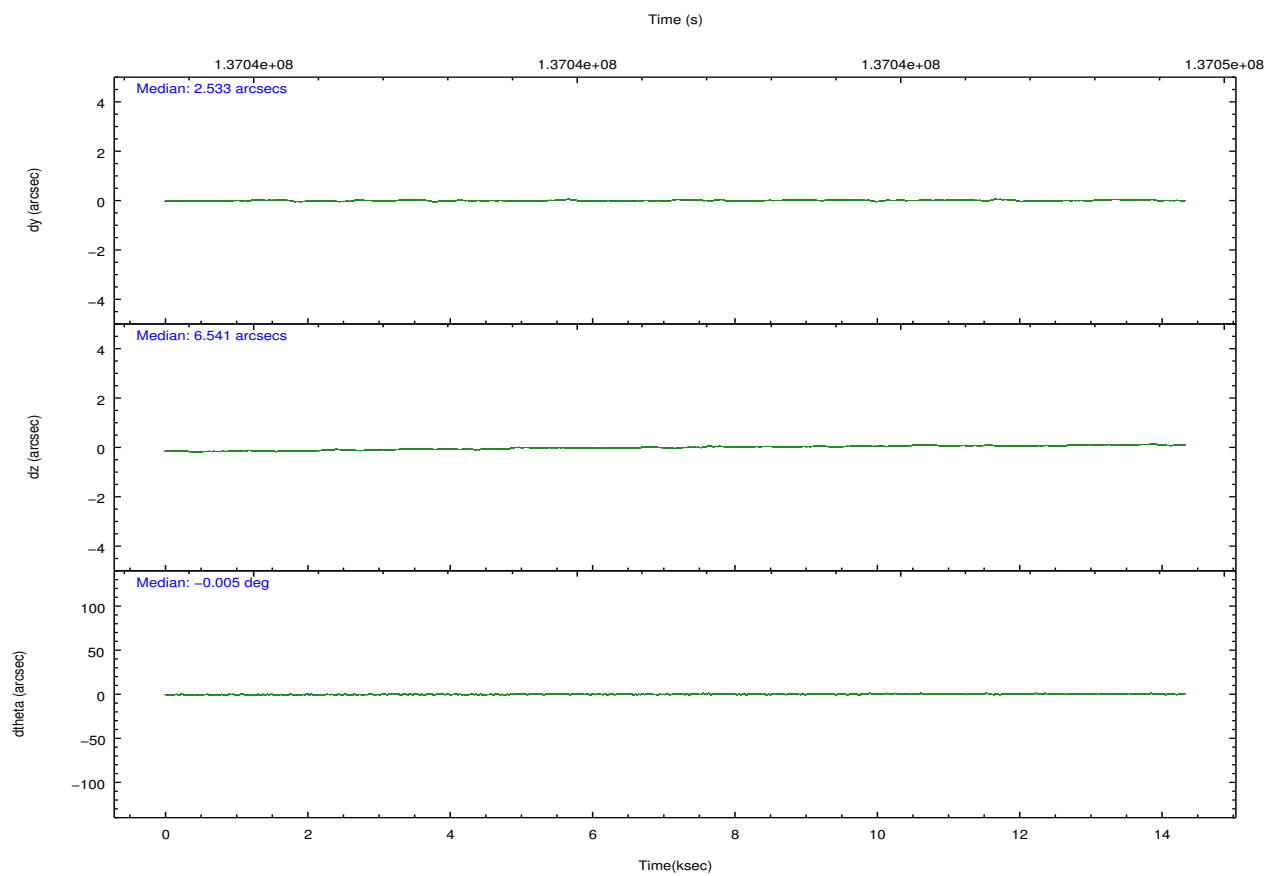
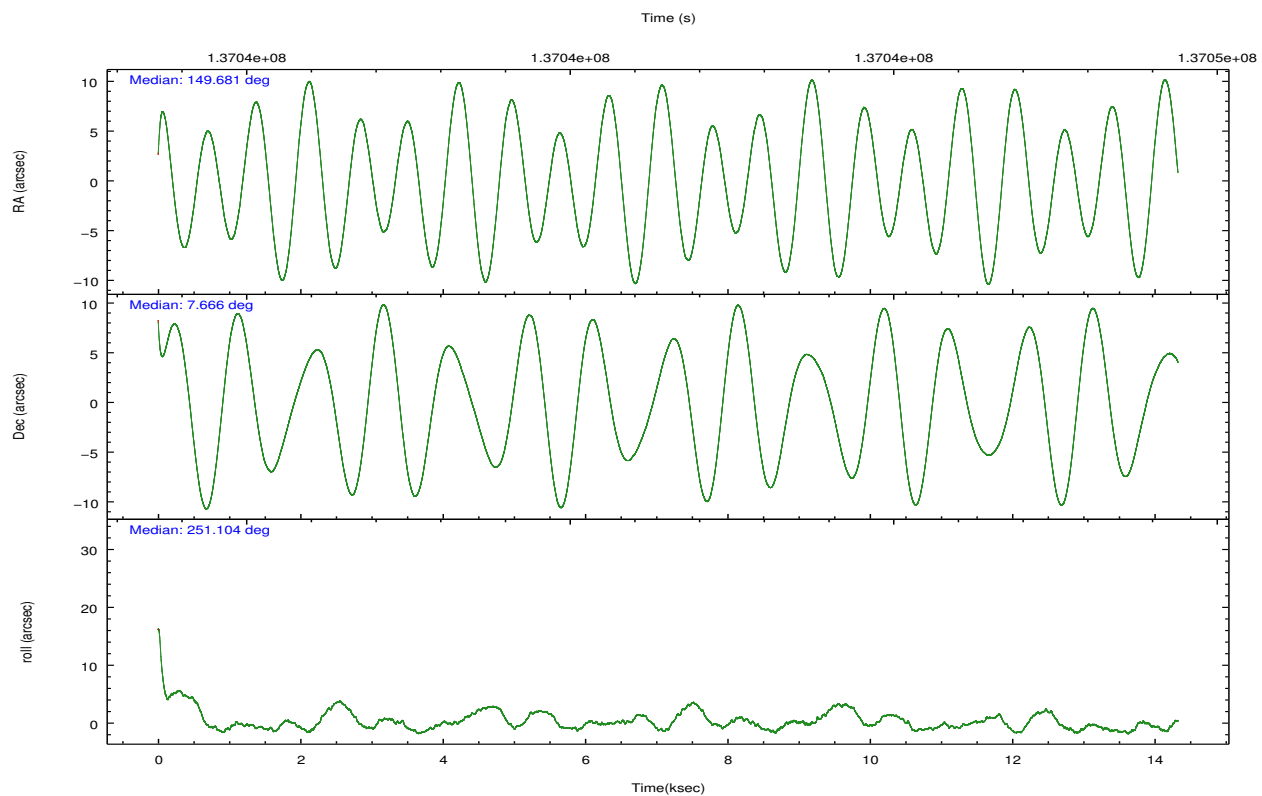
	ccd 2	ccd 3	ccd 5	ccd 6	ccd 7	ccd 8		ccd 2	ccd 3	ccd 5	ccd 6	ccd 7	ccd 8
level 1 events	96976	92493	146689	99998	127028	122739	grade 0 events	4807	4899	11273	4946	5041	7963
rejected events	85797	81535	78599	88372	76266	97742		4%	5%	7%	4%	3%	6%
rejected %	88%	88%	53%	88%	60%	79%	grade 1 events	38	47	461	52	118	84
								0%	0%	0%	0%	0%	0%
							grade 2 events	2534	2288	20223	2430	10289	5687
								2%	2%	13%	2%	8%	4%
							grade 3 events	1041	1065	2782	1174	4779	2796
								1%	1%	1%	1%	3%	2%
							grade 4 events	1086	1044	2699	1159	4652	2614
								1%	1%	1%	1%	3%	2%
							grade 5 events	3444	3623	10544	4223	12216	5321
								3%	3%	7%	4%	9%	4%
							grade 6 events	2025	1968	33565	2264	27796	6672
								2%	2%	22%	2%	21%	5%
							grade 7 events	82001	77559	65142	83750	62137	91602
								84%	83%	44%	83%	48%	74%

2.2 Compared Parameters

Parameter	Planned	Actual	Parameter	Planned	Actual
Instrument	ACIS	ACIS	Obspar format version number	7	7
Detector	ACIS-235678	ACIS-235678	Obspar file type	PREDICTED	ACTUAL
Grating	NONE	NONE	Obspar update status	NONE	UPDATED
Data mode	FAINT	FAINT	Number of optional ACIS chips dropped	0	0
Observation mode	POINTING	POINTING	On-chip summing requested	N	N
[deg] Pointing RA	149.675025	149.6806955705047	Subarray requested	NONE	NONE
[deg] Pointing Dec	7.692351	7.665725837375712	Alternating exposures requested	N	N
[deg] Pointing Roll	250.957010	251.1128917269674	[s] Primary exposure time	0.000000	3.2
[mm] SIM focus pos	-0.684267	-0.6828225247311905			
[mm] SIM defocus	0	0.001444936568705701			
[mm] SIM translation stage pos	-190.132523	-190.1400660498719			
[mm] SIM translation stage offset	0	0.00754346686406393			
[s] Observation start time (MET)	137034508.184000	137033199.99888			
Observation start date	2002-05-06T01:07:24	2002-05-06T00:46:39			
[s] Observation end time (MET)	137048673.184000	137049856.24956			
Observation end date	2002-05-06T05:03:29	2002-05-06T05:24:16			
Read mode	TIMED	TIMED			

2.3 Aspect



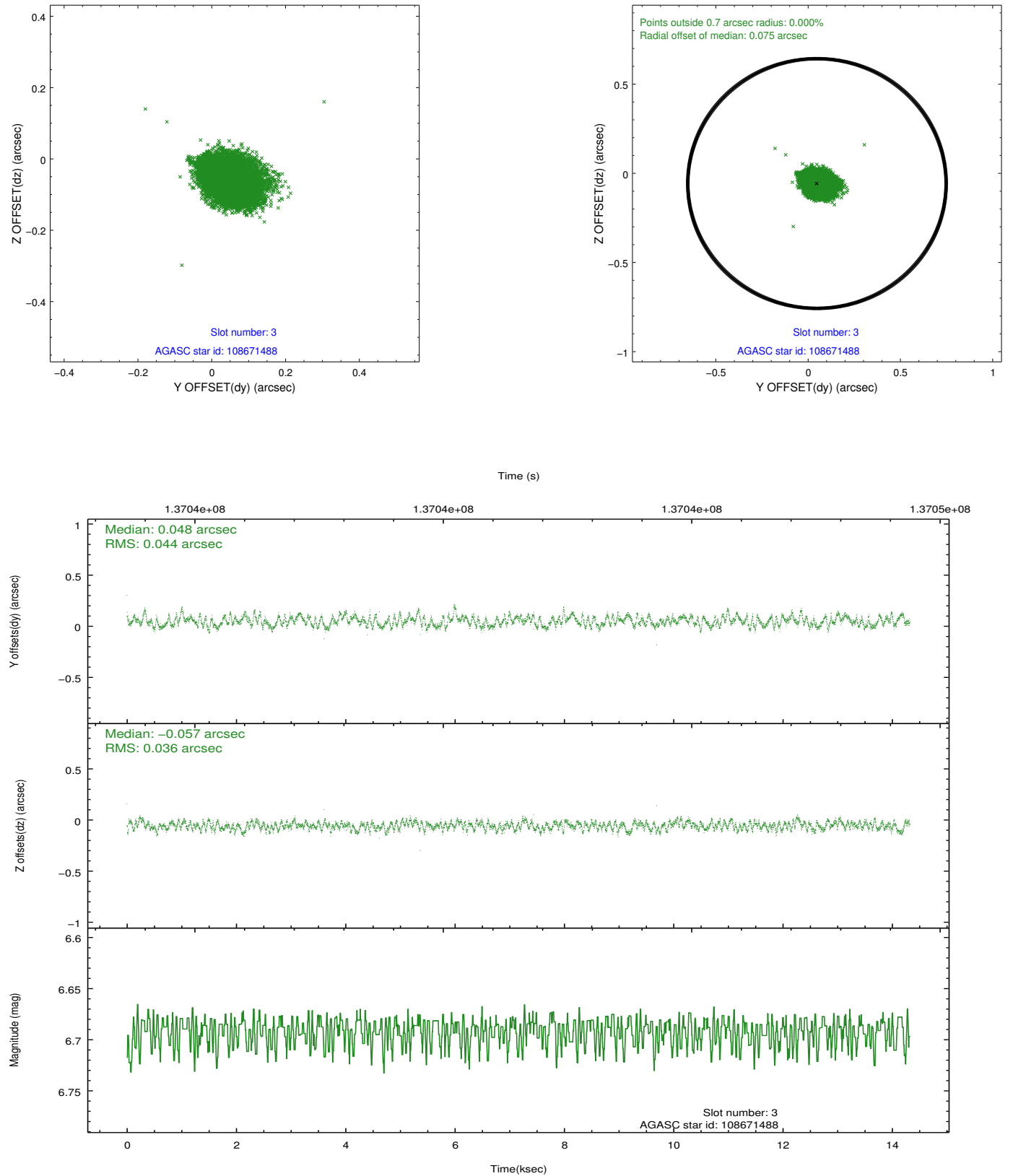


Slot Statistics

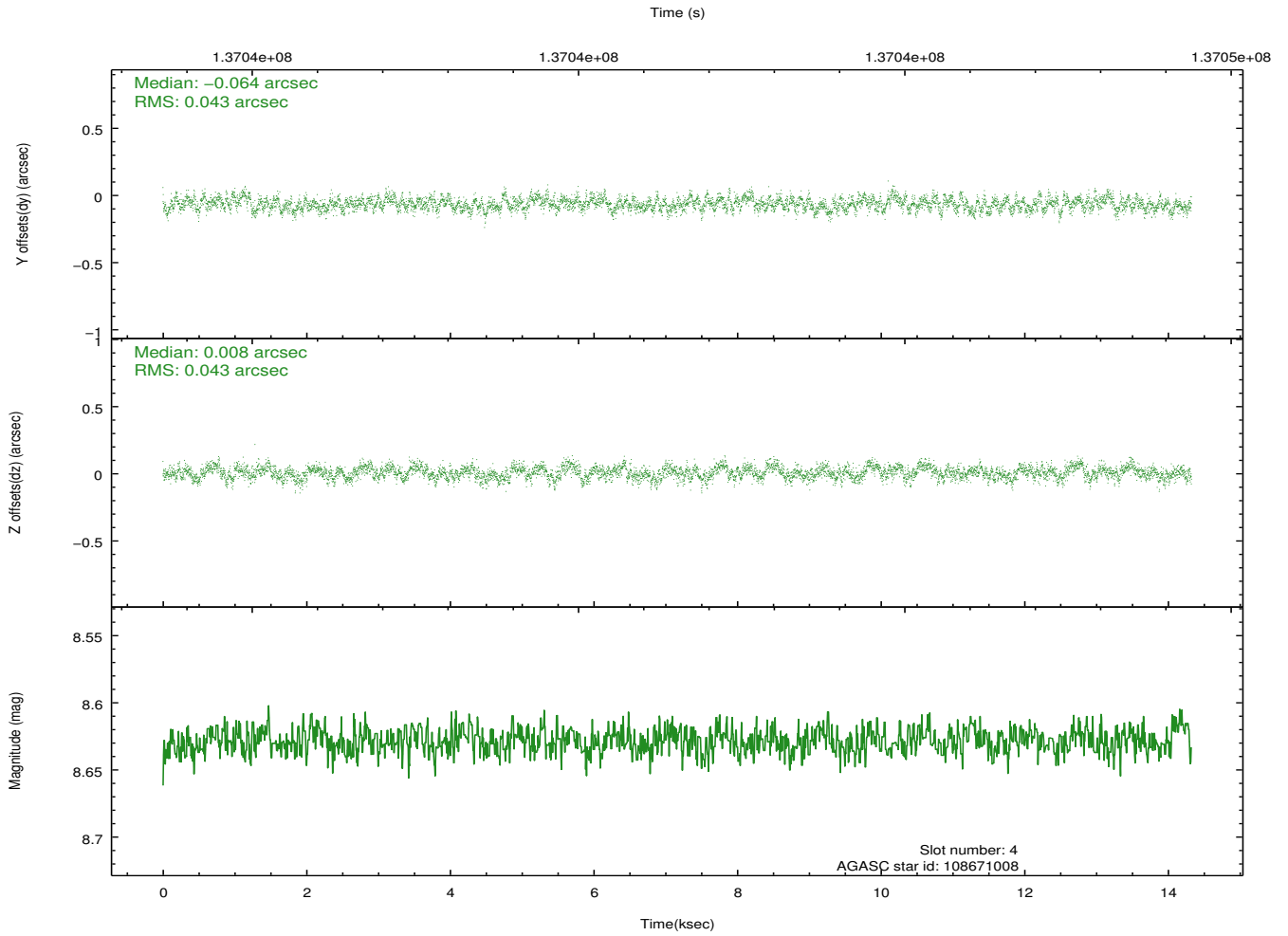
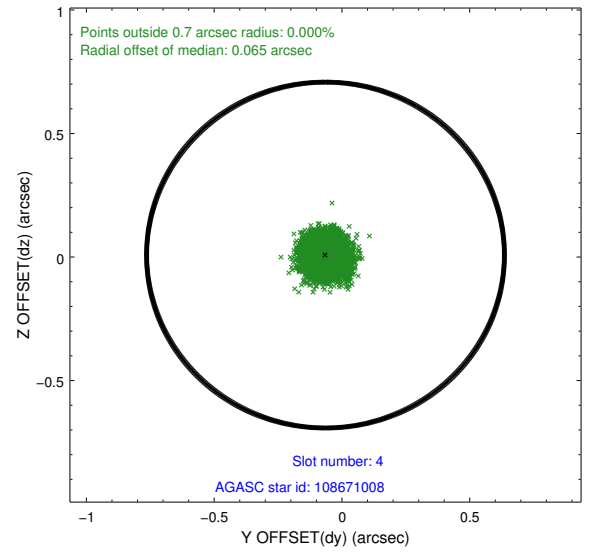
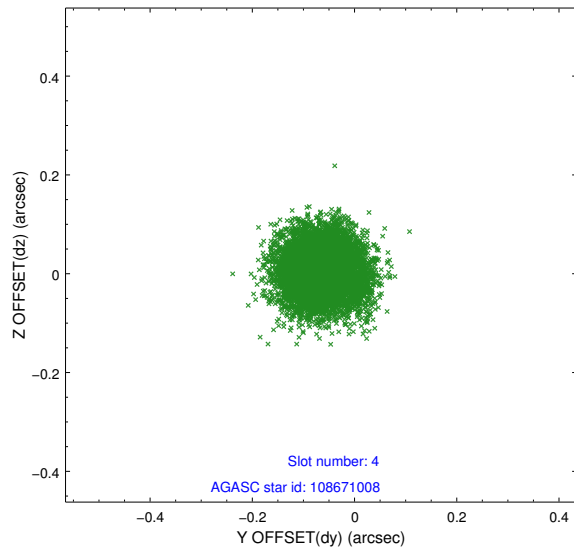
slot	status	id	mag	n_pts	med_dy	med_dz	dr1	dr2	ra	dec	mean_y	mean_z
0	FID	ACIS-S-2	7.11	3495	-0.028	0.014	0.007	0.011	0.000000	0.000000	-755.16	-1727.68
1	FID	ACIS-S-4	7.20	3495	-0.035	0.010	0.006	0.010	0.000000	0.000000	2157.93	180.51
2	FID	ACIS-S-5	7.24	3495	0.032	-0.015	0.007	0.011	0.000000	0.000000	-1807.56	174.46
3	GUIDE	108671488	6.69	6988	0.048	-0.057	0.060	0.095	148.979143	7.677211	861.43	-2329.91
4	GUIDE	108671008	8.63	6988	-0.064	0.008	0.065	0.103	149.984498	7.934611	-1183.52	757.57
5	GUIDE	31852504	9.06	6984	0.024	-0.074	0.071	0.115	149.782695	7.436671	745.61	663.53
6	GUIDE	108670120	9.21	6982	-0.004	0.078	0.075	0.120	150.177894	7.612949	-315.16	1788.94
7	GUIDE	108670920	9.70	6981	-0.012	0.044	0.123	0.196	150.340500	7.649103	-628.49	2294.61

2.4 Star Slots

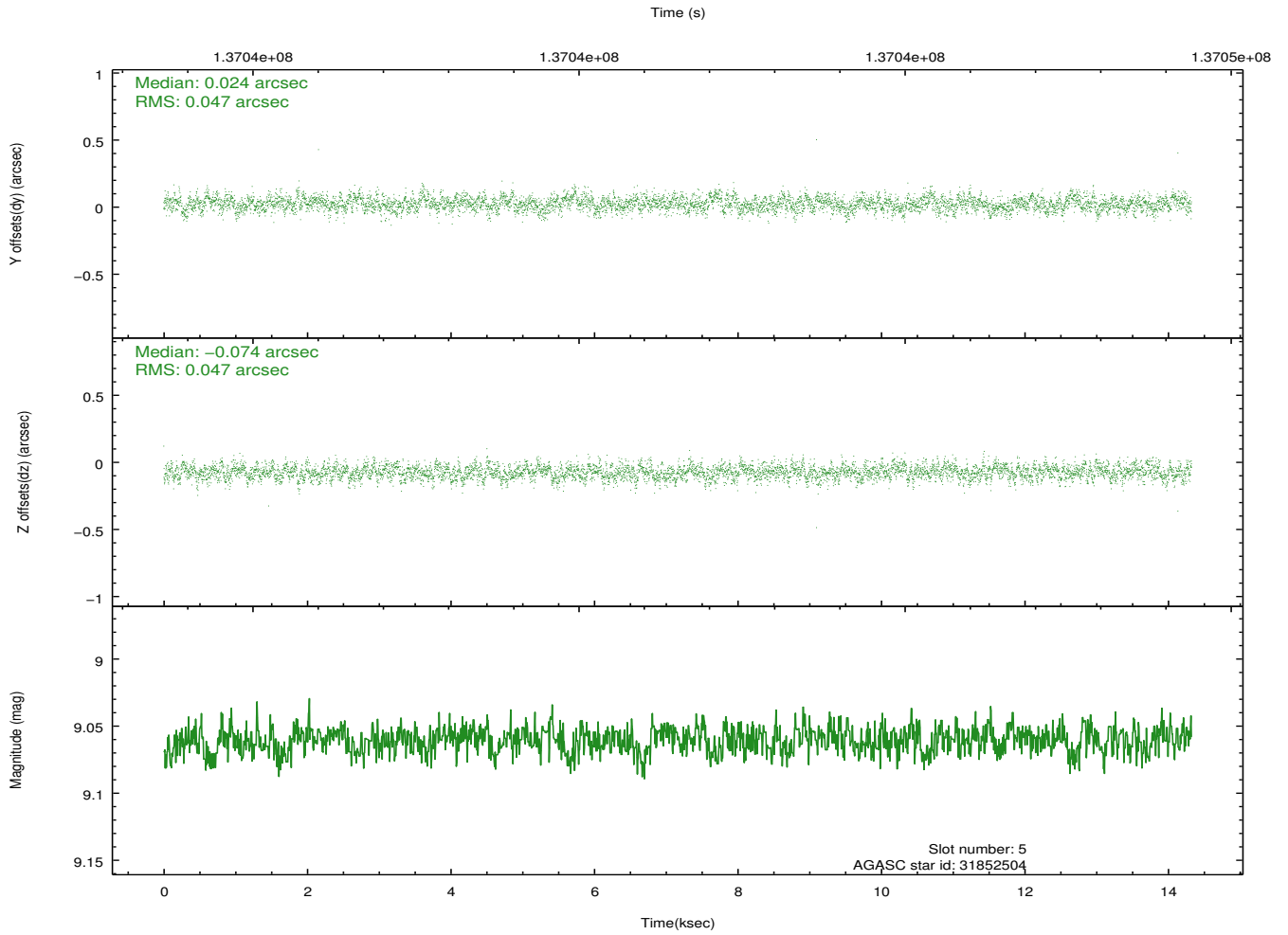
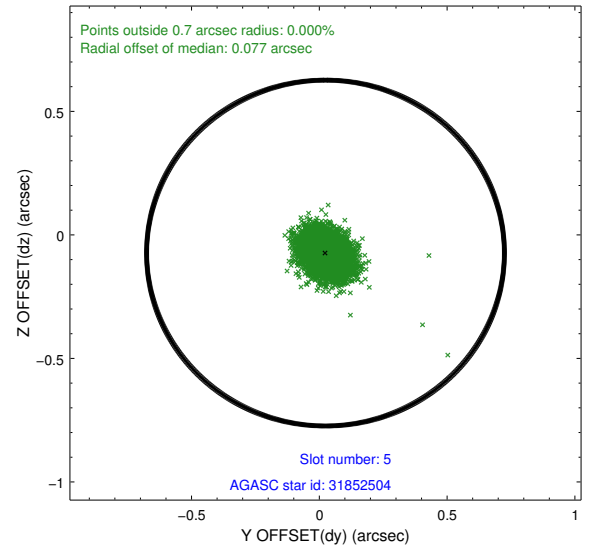
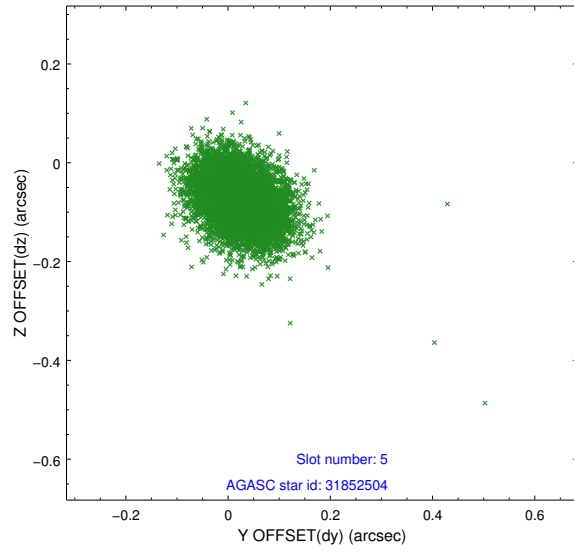
2.4.1 Slot 3



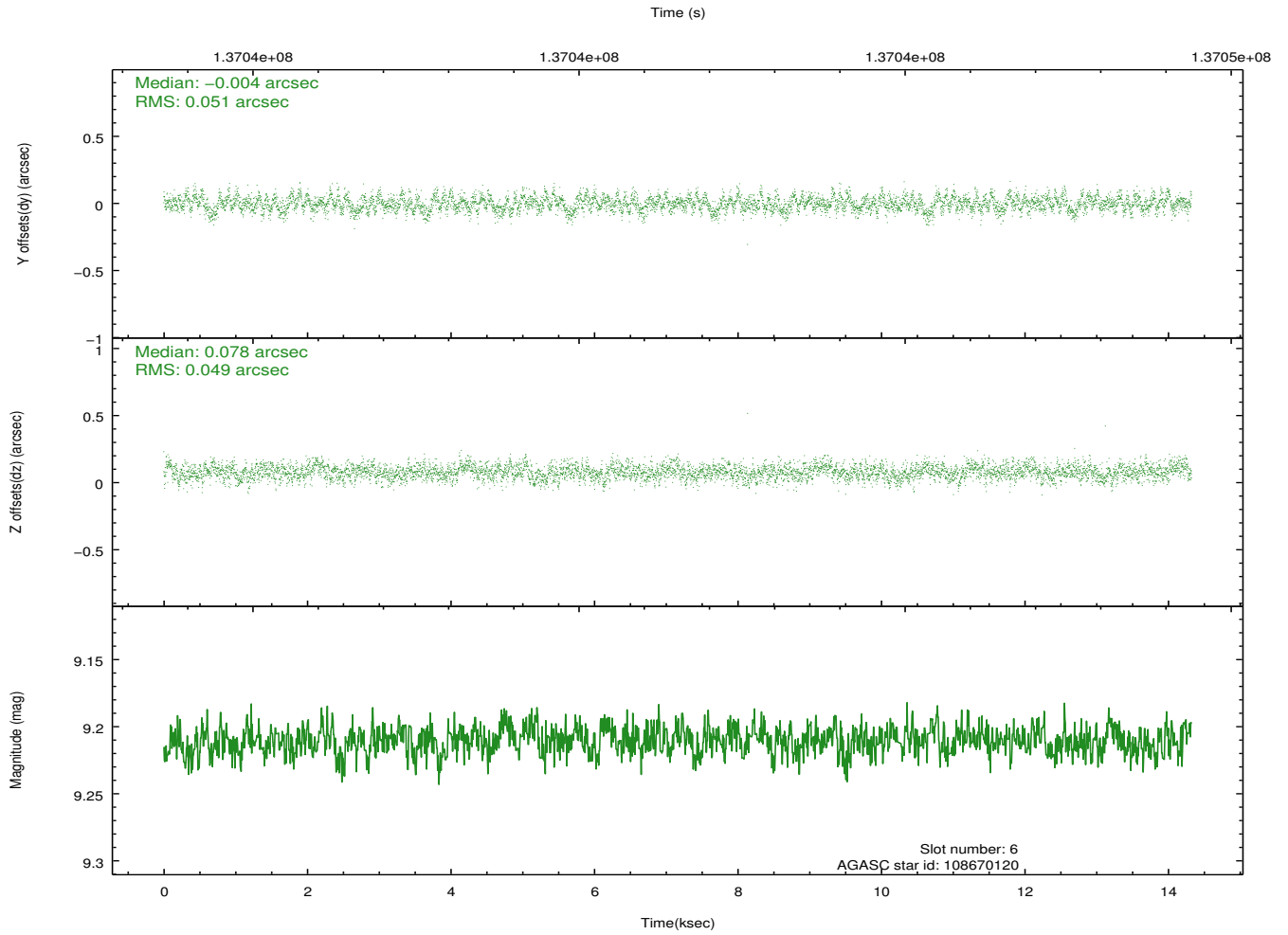
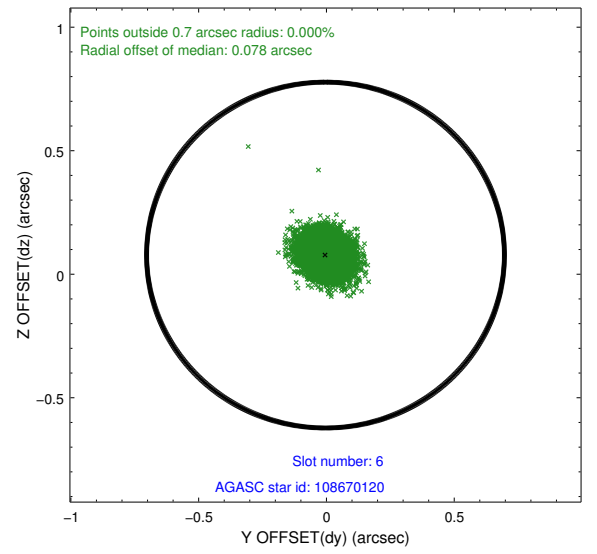
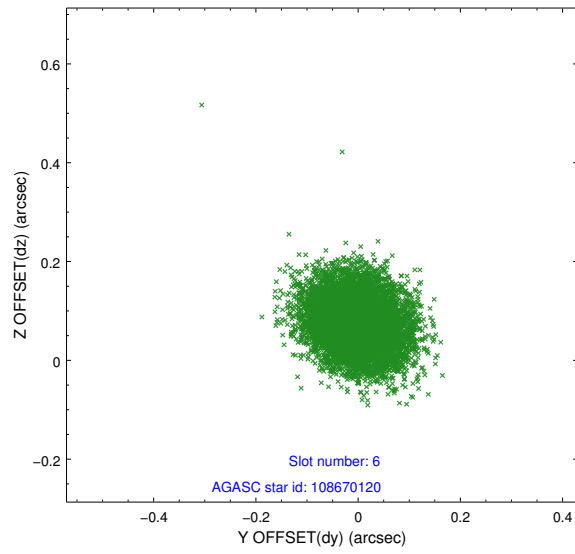
2.4.2 Slot 4



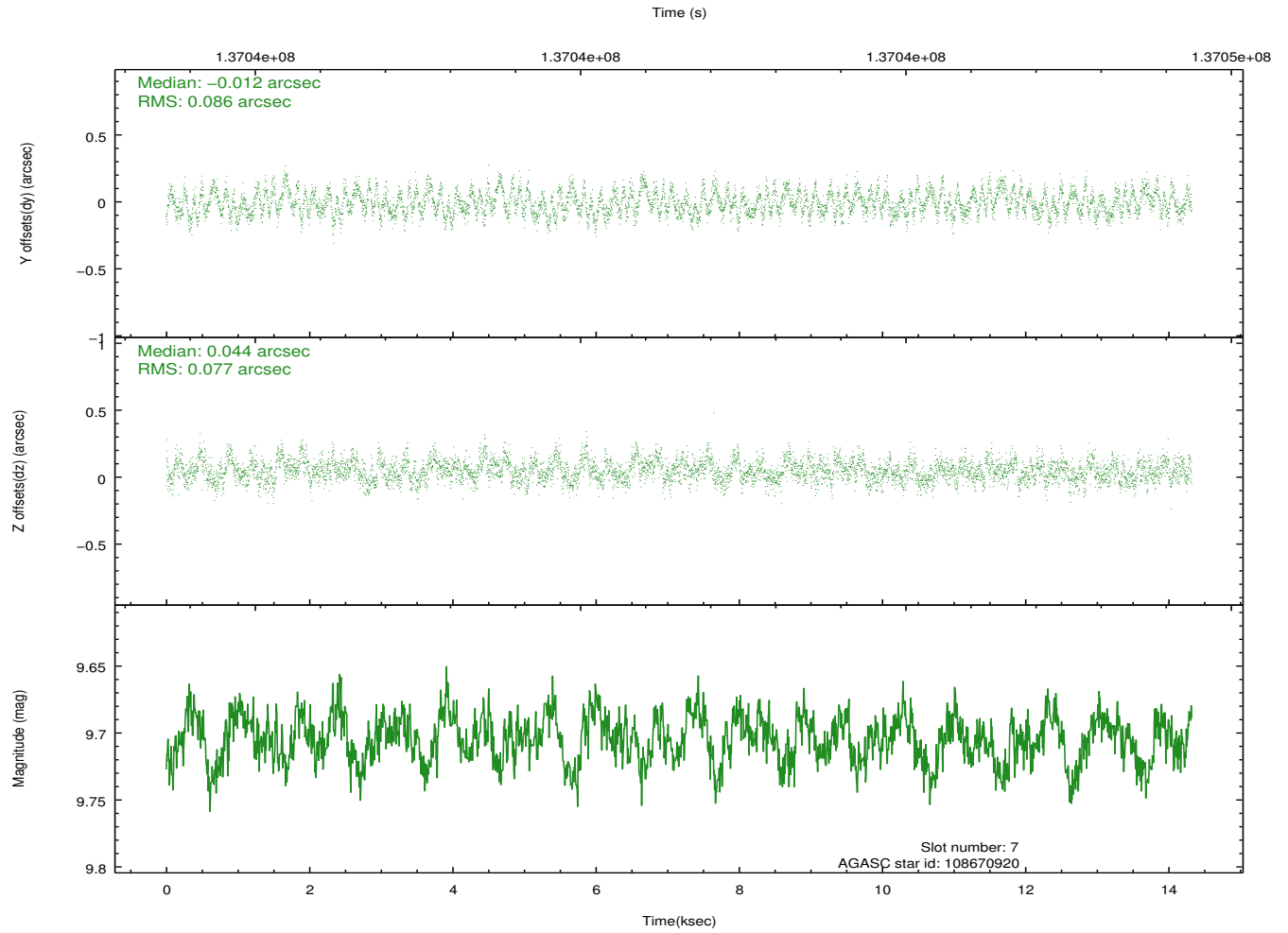
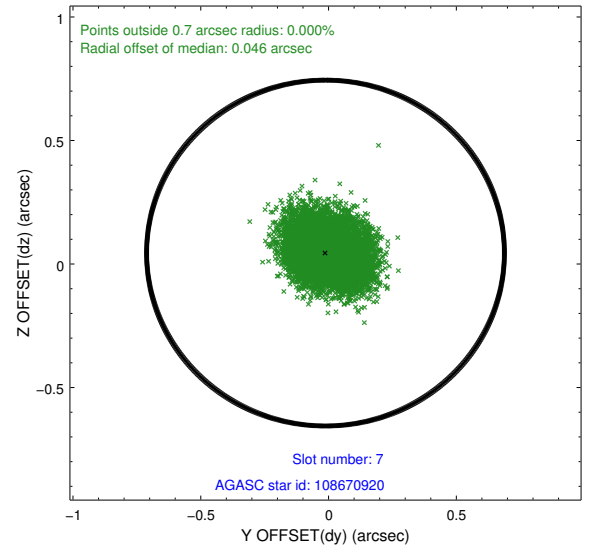
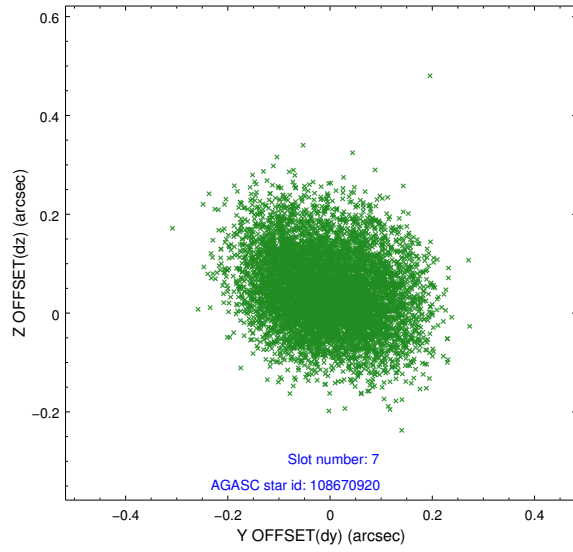
2.4.3 Slot 5



2.4.4 Slot 6

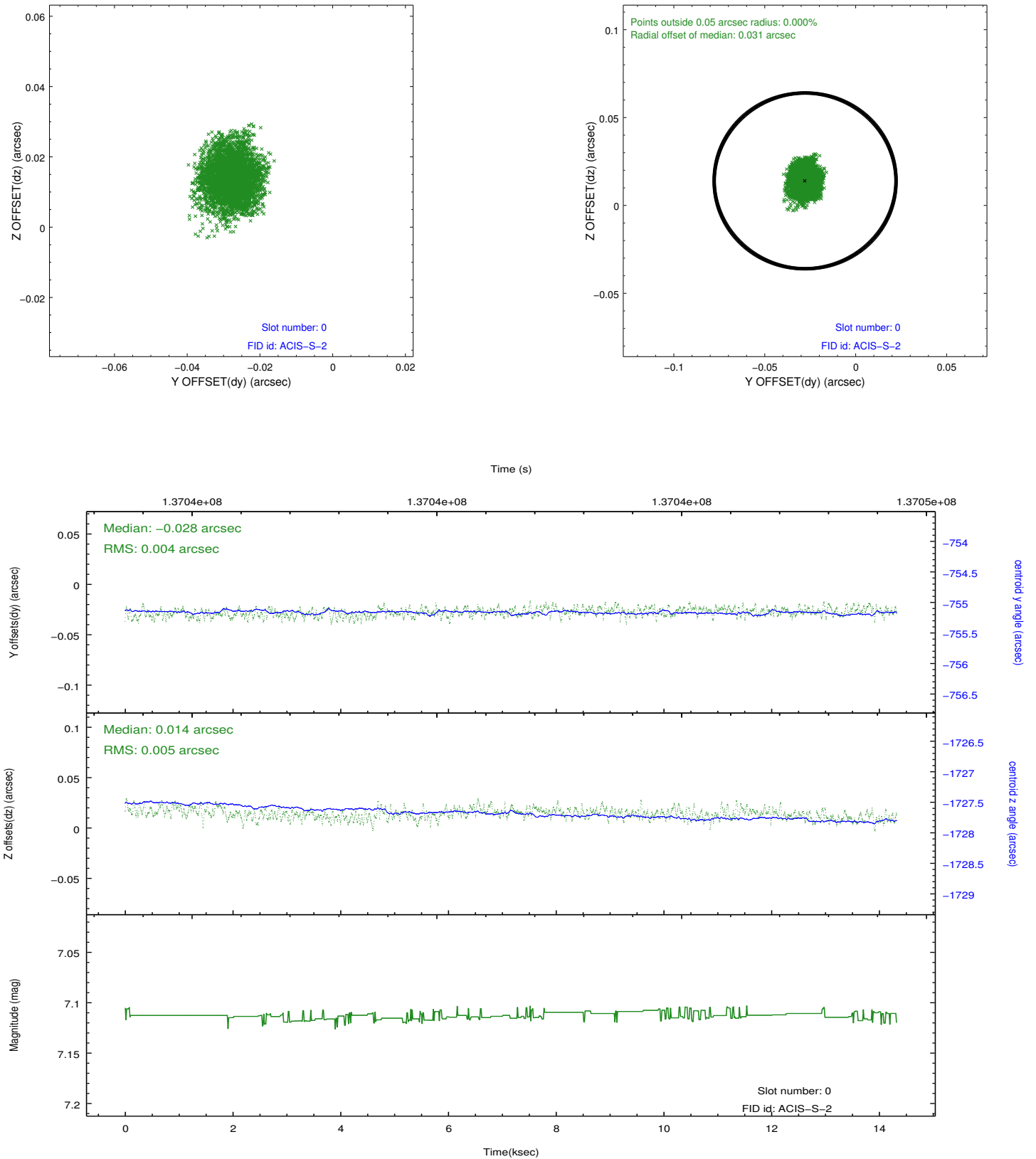


2.4.5 Slot 7

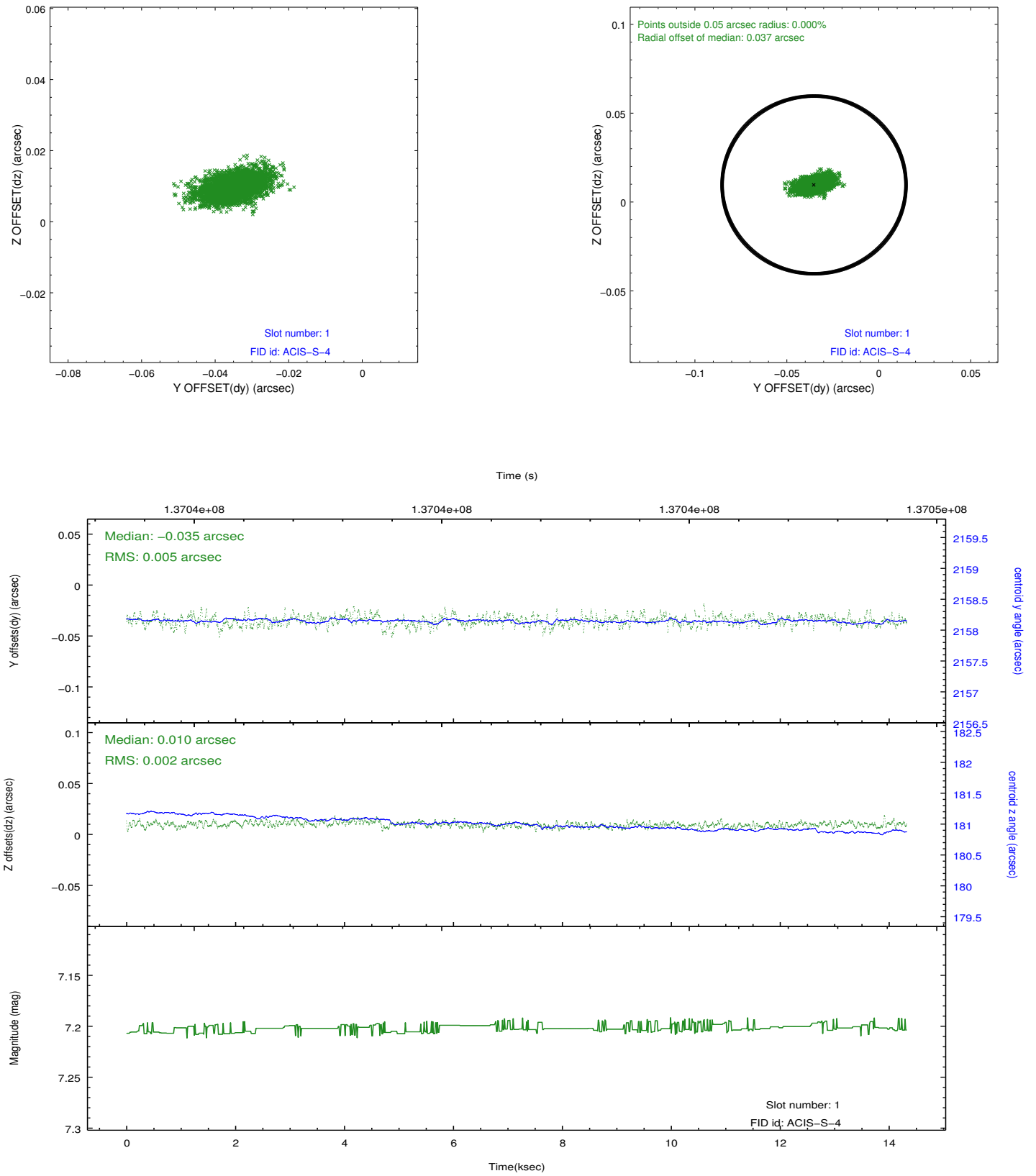


2.5 FID Slots

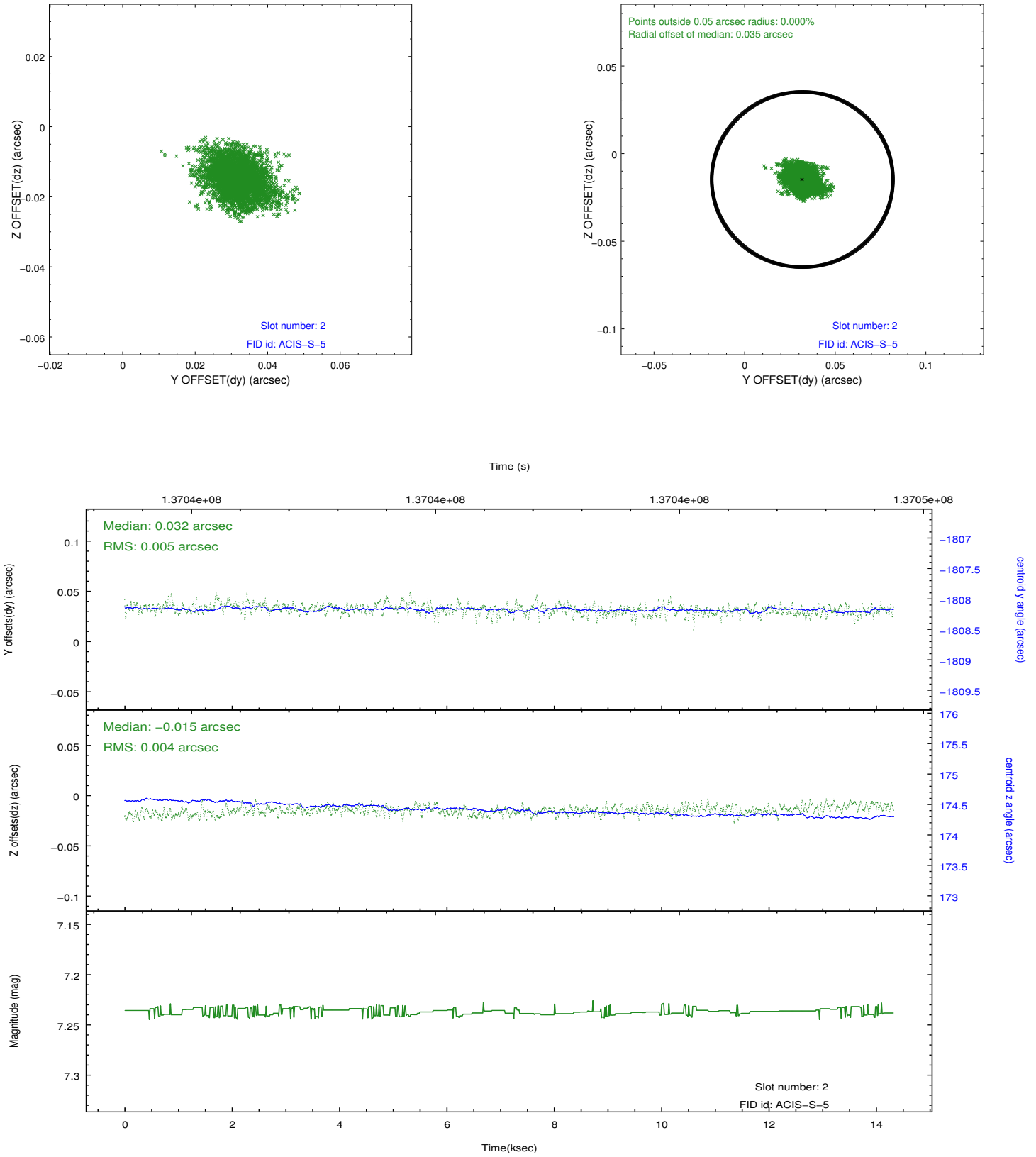
2.5.1 Slot 0



2.5.2 Slot 1



2.5.3 Slot 2



A Summary

A.1 Status

V&V Scientist	Beth Sundheim
V&V Date (YYYY-MM-DD)	2012.10.15
V&V Edition	1
V&V Disposition and Status	OK
V&V Charge Time	14.319

A.2 Comments